

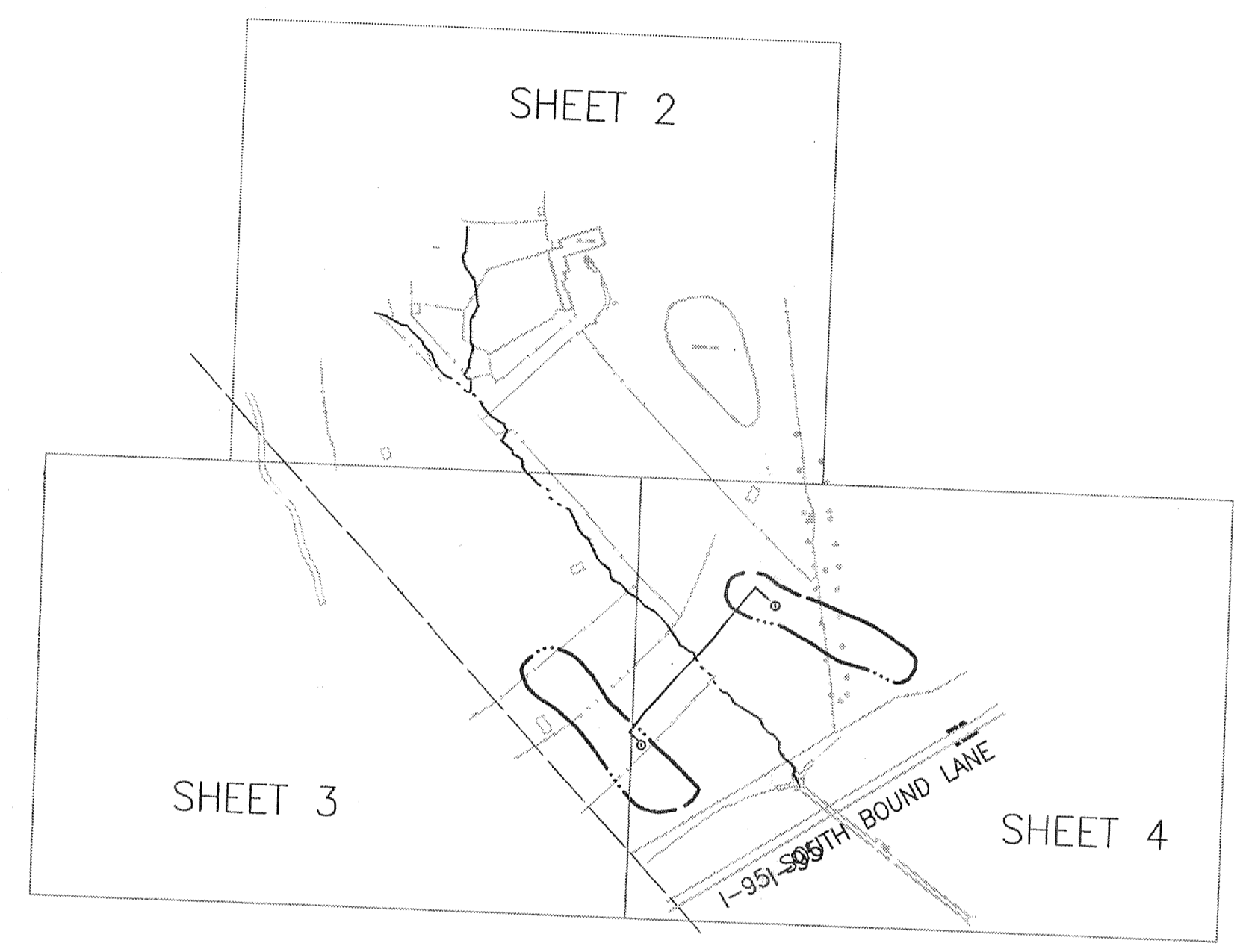
LEGEND — EXISTING FEATURES

- — EX. STORM MANHOLE
- — GUARD RAIL
- ⌋ — STORM ENDWALL
- △ — TRAVERSE CONTROL STATION
- ▨ — RIP-RAP STONE
- x — x — x — EXISTING FENCE
- ⊗ — EXISTING SHRUB
- ⊙ — EXISTING CLEANOUT
- — — — — CENTERLINE OF STREAM
- ~~~~~ TREE LINE
- ~~~~~ FLOODPLAIN

LEGEND — PROPOSED FEATURES

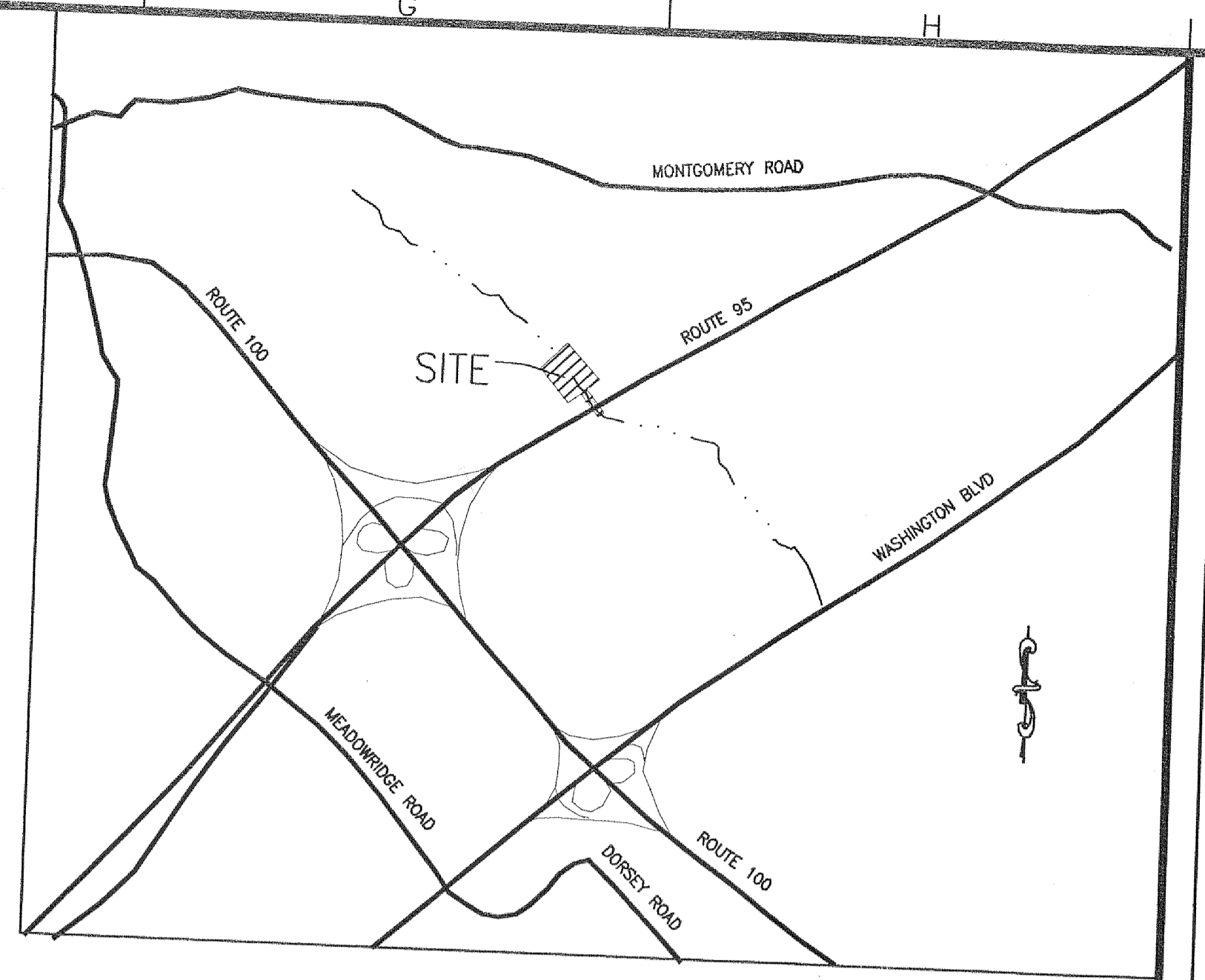
- 1' CONTOUR
- 205 — 5' CONTOUR
- — — — — WATER SURFACE
- ▨ RIPRAP
- — — — — STORM DRAIN PIPE
- ▨ RIPARIAN PLANTING AREA
- — — — — LIMITS OF DISTURBANCE

SHEET LAYOUT
SCALE: 1"=200'



SHEET INDEX

SHEET NO.	DESCRIPTION
1	COVER SHEET
2-4	PLANS
5	SECTIONS
6	DRAINAGE AREA MAP
7	ZONING AND SOILS MAP



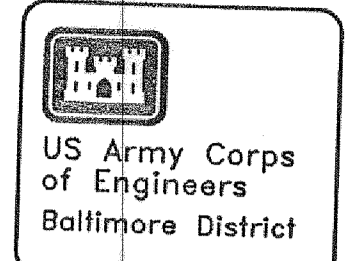
VICINITY MAP
1" = 2000'

NOTES

- EXISTING CONDITIONS SURVEYED BY WILLIAM H. GORDON ASSOC., INC., 1998. HORIZONTAL CONTROL IS BASED ON MD. STATE PLANE, NAD 1927. VERTICAL CONTROL IS BASED ON NGVD 1929. LOCAL CONTROL WAS ESTABLISHED USING THE FAST STATIC METHOD UTILIZING TWO TRIMBLE 4800 DUAL FREQUENCY GPS RECEIVERS. THE NETWORK IS REFERENCED TO THE HOWARD COUNTY HIGH ACCURACY REGIONAL NETWORK (HARN) UTILIZING MONUMENTS ZIMMER; 26-46-006 AND 4-25.
- EXISTING 12" SANITARY PIPE INFORMATION WAS OBTAINED FROM HOWARD COUNTY AS-BUILTS OF SEWER CONTRACT 657-S. LOCATIONS AND INVERT ELEVATIONS WERE NOT FIELD SURVEYED. BASED ON COUNTY MAPS, NO WATER MAINS EXIST WITHIN THE LIMITS OF CONSTRUCTION. NO OTHER UTILITIES WERE RESEARCHED.
- FLOODPLAIN INFORMATION WAS OBTAINED FROM HOWARD COUNTY FLOODPLAIN MAPS PREPARED BY GREENHORNE & OMARA.
- STREAM IS A USE 1 TRIBUTARY OF DEEP RUN.
- NO WETLAND DELINEATION WAS PERFORMED.

TRAVERSE DATA

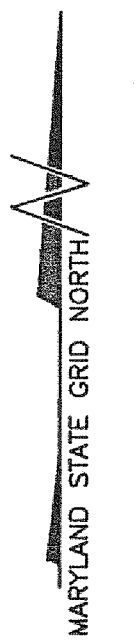
POINT #	NORTHING	EASTING	ELEV	DESC.
141	499637.1952	868040.4596	230.89	REBAR & CAP
142	499271.3641	868578.5585	225.18	REBAR & CAP
143	499082.6620	868102.4375	230.70	REBAR & CAP
145	498996.8390	868796.6614	206.90	6" NAIL
146	498902.2260	868674.2883	203.86	HUB & TACK
147	498830.8204	868576.4725	205.77	6" NAIL
148	498797.1880	868445.7779	216.90	6" NAIL
149	498894.4096	868853.9649	219.82	6" NAIL
1000	498697.7507	868544.7401	224.07	6" NAIL



DATE	REV.	DESCRIPTION
6/16/98		90% SUBMISSION COMMENTS
9/9/98		100% SUBMISSION COMMENTS

U.S. ARMY ENGINEER DISTRICT, BALTIMORE	FILE NAME	FILE: DRTKT305
CORPS OF ENGINEERS	DRAWING NUMBER	
BALTIMORE, MARYLAND	SCALE: AS SHOWN	DATE: 5/22/98
		PLOT SCALE:

BALTIMORE METROPOLITAN WATER RESOURCES
FEASIBILITY STUDY
HOWARD COUNTY, MARYLAND
DEEP RUN AND TIBER/HUDSON WATERSHEDS
SITE DRTKT305
COVER SHEET



N 499,200

N 499,000

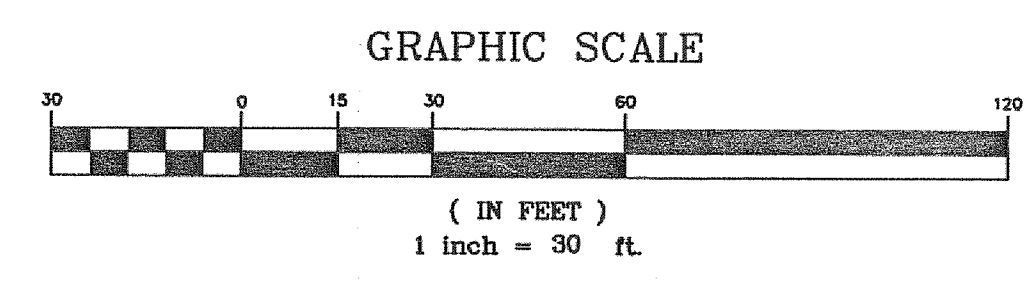
N 498,800

E 867,800

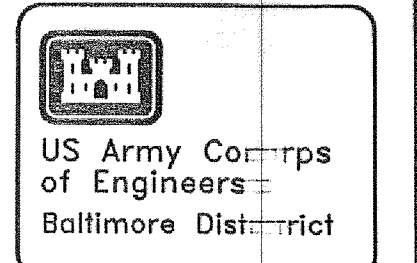
E 868,000

E 868,200

E 868,400



MATCH LINE SHEET 4 OF 5

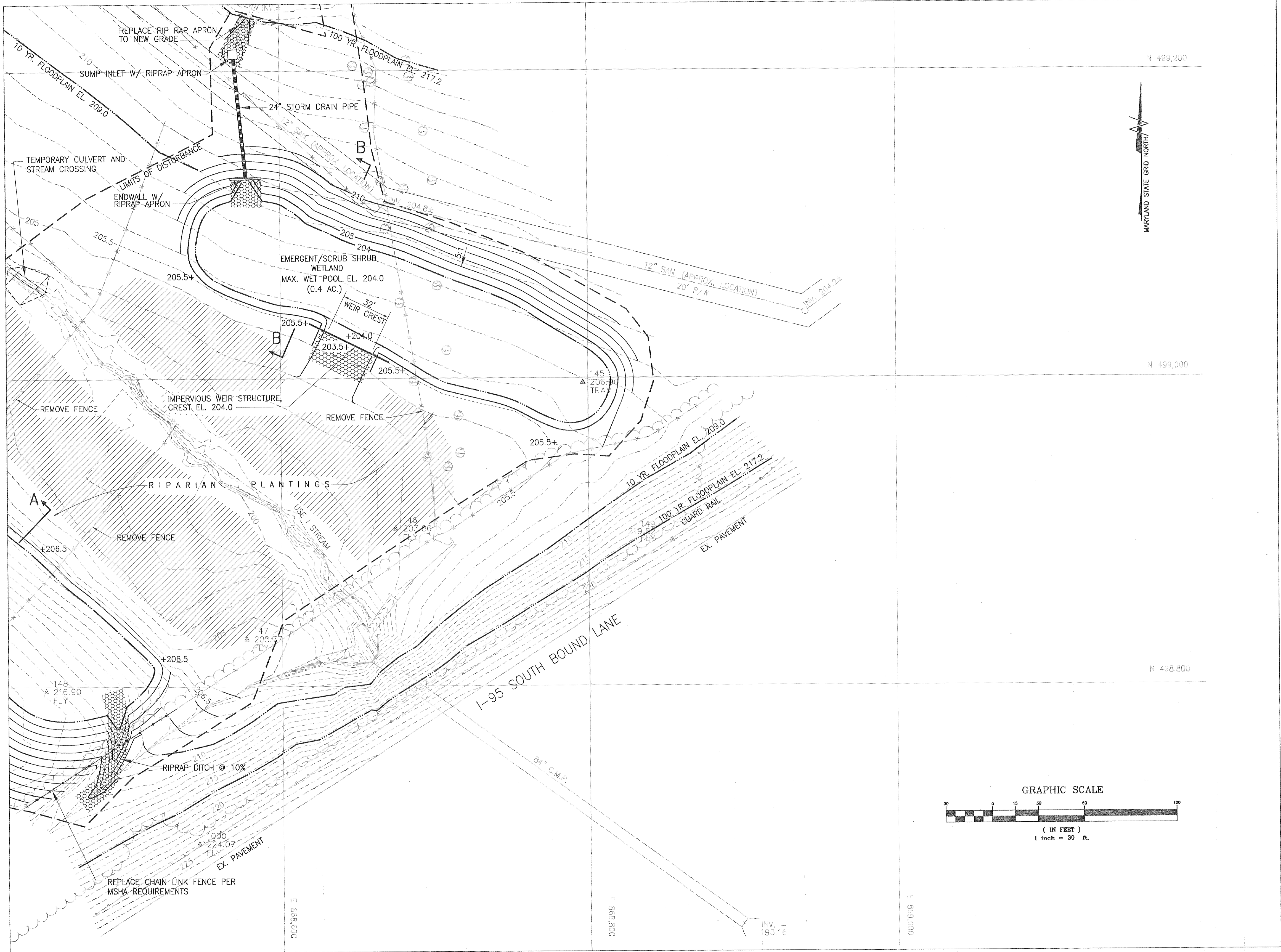


SYMBOL	REV.	DATE	DESCRIPTION	BY

U.S. ARMY ENGINEER DISTRICT BALTIMORE		FILE NAME	PLT SCALE:
CORPS OF ENGINEERS		FILE: DRTKT305	
BALTIMORE, MARYLAND			
PLATE	DRAWING NUMBER	DATE: 5/22/98	

BALTIMORE METROPOLITAN WATER RESOURCES
 FEASIBILITY STUDY
 HOWARD COUNTY, MARYLAND
 DEEP RUN AND TIBER/HUDSON WATERSHEDS
 SITE DRTKT305

Sheet Number:
 3 OF 5



N 499,200

N 499,000

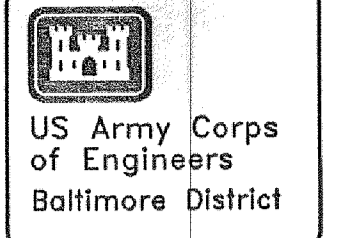
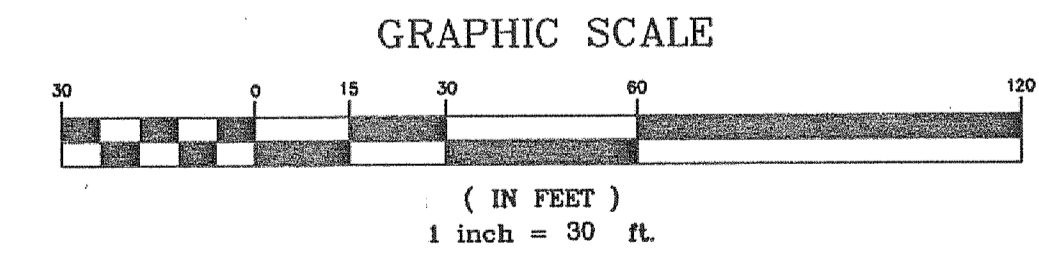
N 498,800

E 868,600

E 868,800

E 869,000

INV. = 193.16



US Army Corps of Engineers
Baltimore District

SYMBOL	REV.	DATE	DESCRIPTION

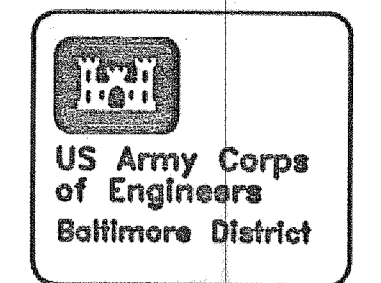
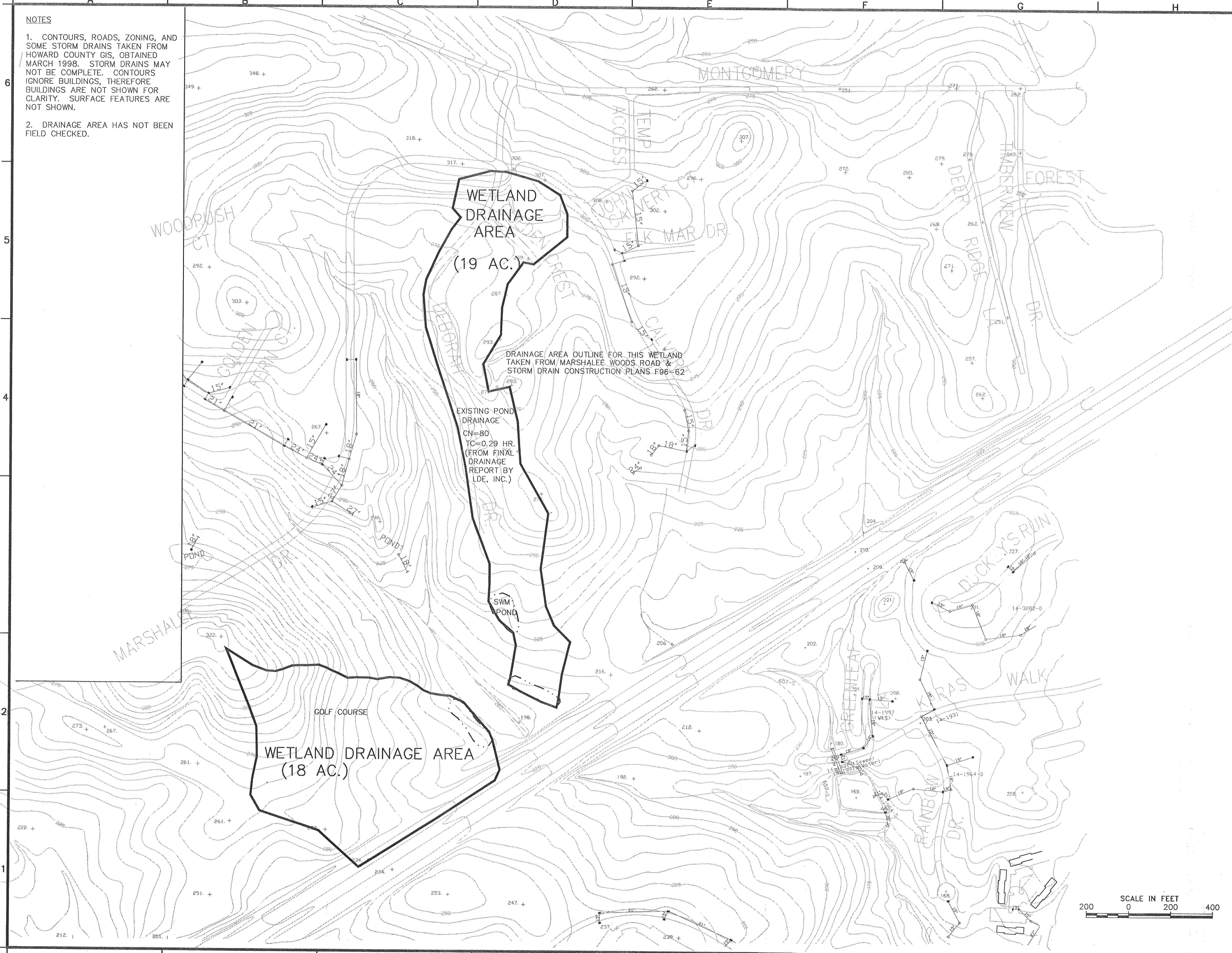
U.S. ARMY ENGINEER DISTRICT, BALTIMORE	
CORPS OF ENGINEERS	
BALTIMORE, MARYLAND	
PLATE	FILE NAME
DRAWING NUMBER	File: pdf305
SCALE: AS SHOWN	DATE: 5/22/98
PLT SCALE:	PLT SCALE:

BALTIMORE METROPOLITAN WATER RESOURCES
FEASIBILITY STUDY
HOWARD COUNTY, MARYLAND
DEEP RUN AND TIBBERHURDSON WATERSHEDS
SITE DRTK1305
PLAN

Sheet Number:
4 OF 7

NOTES

1. CONTOURS, ROADS, ZONING, AND SOME STORM DRAINS TAKEN FROM HOWARD COUNTY GIS, OBTAINED MARCH 1998. STORM DRAINS MAY NOT BE COMPLETE. CONTOURS IGNORE BUILDINGS, THEREFORE BUILDINGS ARE NOT SHOWN FOR CLARITY. SURFACE FEATURES ARE NOT SHOWN.
2. DRAINAGE AREA HAS NOT BEEN FIELD CHECKED.



SYMBOL	REV.	DATE	DESCRIPTION	BY

U.S. ARMY ENGINEER DISTRICT, BALTIMORE	
CORPS OF ENGINEERS	
BALTIMORE, MARYLAND	
PLATE	FILE NAME
DRAWING NUMBER	File: DR305A
SCALE:	PLT SCALE:
DATE:	DATE:

BALTIMORE METROPOLITAN WATER RESOURCES
FEASIBILITY STUDY
HOWARD COUNTY, MD
DEEP RUN AND TIBER/HUDSON WATERSHEDS
WETLAND SITE DRKT305
DRAINAGE AREA MAP

Sheet Number:
6 OF 7

Updated: 10/6/98 ID = etenwujd Plot: 12/04/98

