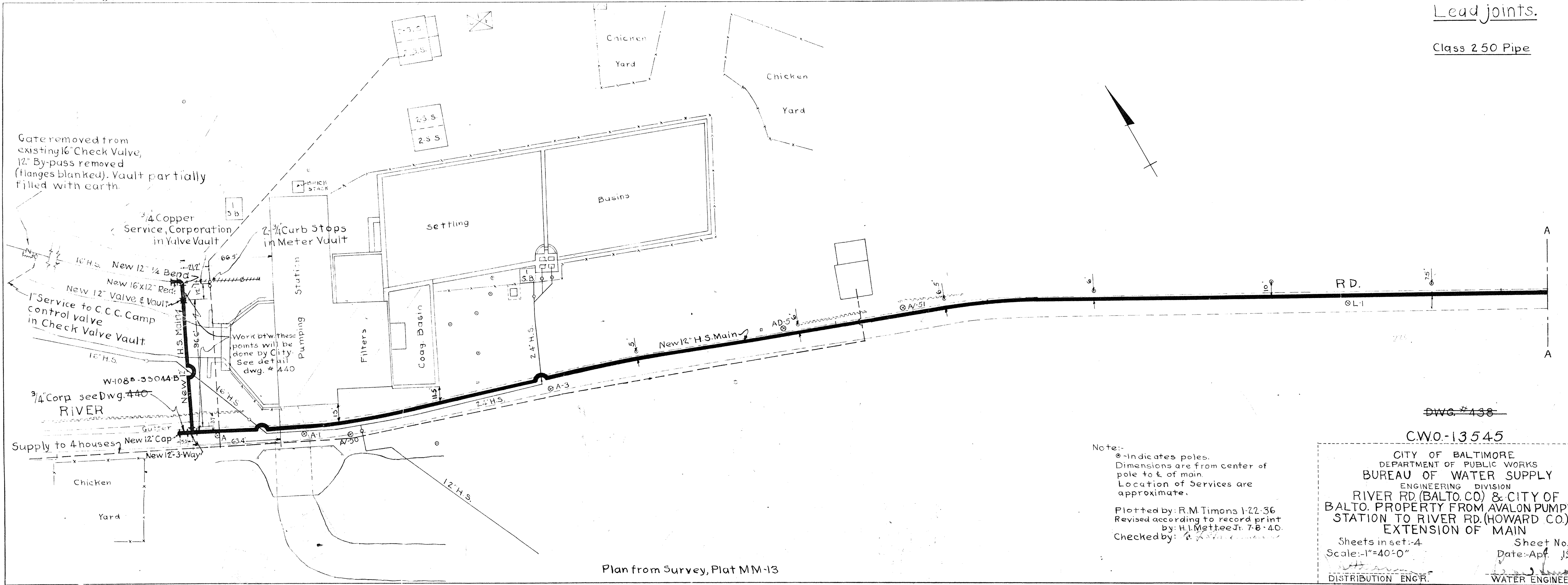


Lead joints.

Class 250 Pipe



Gate removed from existing 16" Check Valve, 12" By-pass removed (flanges blanked). Vault partially filled with earth.

3/4" Copper Service, Corporation in Yule Vault

2-3/4" Curb Stops in Meter Vault

Work btw. these points will be done by City. See detail dwg. # 440

3/4" Corp see Dwg. 440 RIVER

Supply to 4 houses

Plan from Survey, Plat MM-13

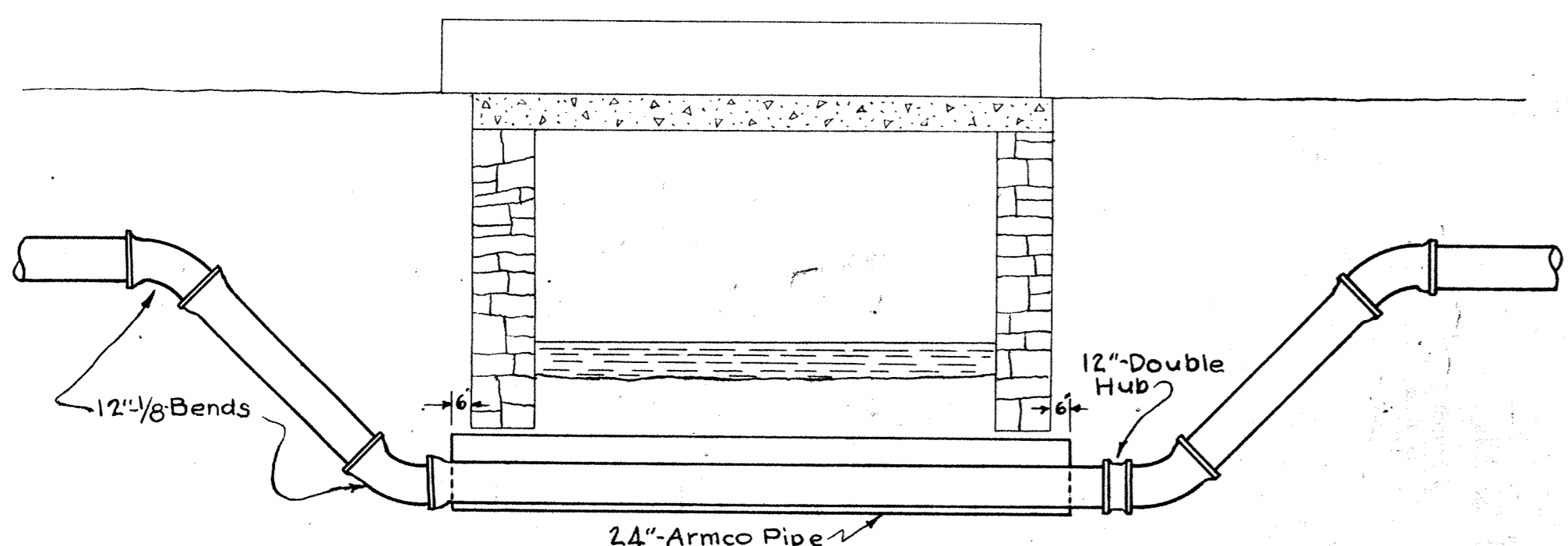
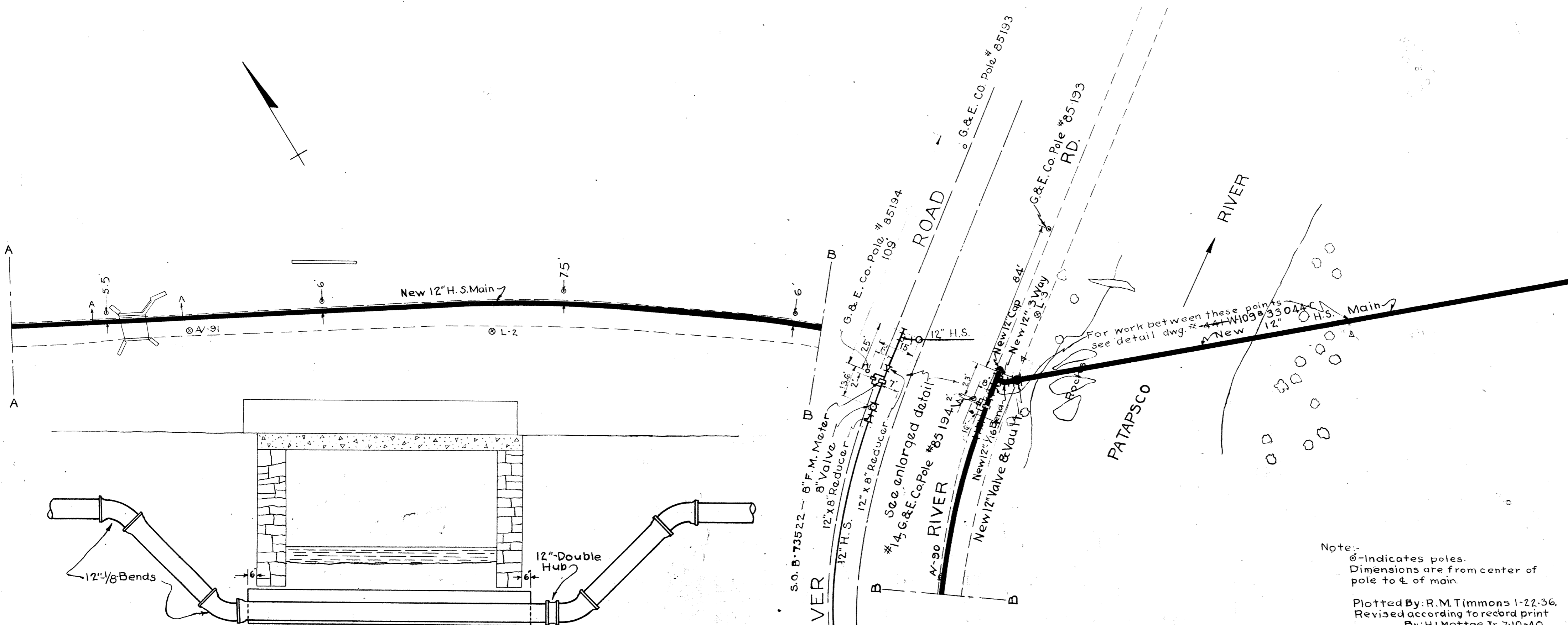
Note:-

- ⊙ - Indicates poles.
- Dimensions are from center of pole to $\frac{1}{2}$ of main.
- Location of Services are approximate.

Plotted by: R.M. Timons 1-22-36
 Revised according to record print by: H.I. Mettee Jr. 7-8-40
 Checked by: *[Signature]*

DWG. # 438
C.W.O.-13545
 CITY OF BALTIMORE
 DEPARTMENT OF PUBLIC WORKS
 BUREAU OF WATER SUPPLY
 ENGINEERING DIVISION
 RIVER RD. (BALTO. CO.) & CITY OF BALTO. PROPERTY FROM AVALON PUMPING STATION TO RIVER RD. (HOWARD CO.)
EXTENSION OF MAIN
 Sheets in set: 4
 Scale: 1"=40'-0"
 Sheet No. 1 of 3
 Date: Apr. 1935
 DISTRIBUTION ENGR. *[Signature]*
 WATER ENGINEER *[Signature]*

Lead joints.
Class 250 Pipe



Sec. A-A
Scale: 1/4"=1'-0"

Plan from Survey, Plat:MM-14, NN-14

Note:-
Meter installation not included under C.W.O. 13545.
Tracing revised due to Meter installation on Oct. 11, 1960.

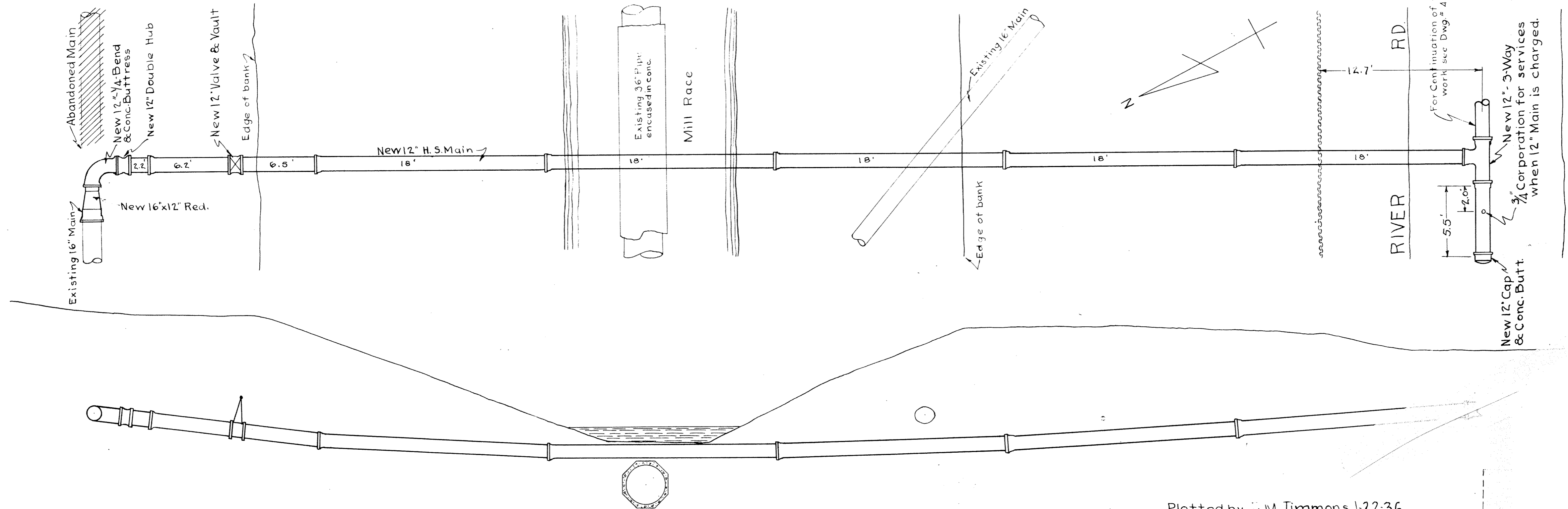
Note:-
⊙-Indicates poles.
Dimensions are from center of pole to 1/4 of main.
Plotted By: R.M. Timmons 1-22-36.
Revised according to record print
By: H.I. Mettee Jr. 7-19-40.
Checked By: *[Signature]*

RD.
New 12" Valve & Vault
New 12" 1/16 Bend
New 12" 3-Way
Sheet No. J.C.W.O.-13270
Dwg. No. 34000
Wice B. 30339
Whitman, Raquardt & Asso.
have the tracings from
this point on.

~~DWG #459~~
C.W.O.-13545

CITY OF BALTIMORE
DEPARTMENT OF PUBLIC WORKS
BUREAU OF WATER SUPPLY
ENGINEERING DIVISION
RIVER RD. (BALTO. CO.) & CITY OF
BALTO. PROPERTY FROM AVALON PUMPING
STATION TO RIVER RD. (HOWARD CO.)
EXTENSION OF MAIN
Sheets in set: 4
Scale: 1"=40'-0" & 1/4"=1'-0"
Sheet No. 2 of 3
Date: Apr. 1935
DISTRIBUTION ENGR. *[Signature]*
WATER ENGINEER *[Signature]*

Lead Joints
Class 250 Pipe



Plotted by: H.M. Timmons 1-22-36
 Revised according to Record Print
 by: H.I. Mettee Jr. 7-7-40.
 Checked by: *[Signature]*