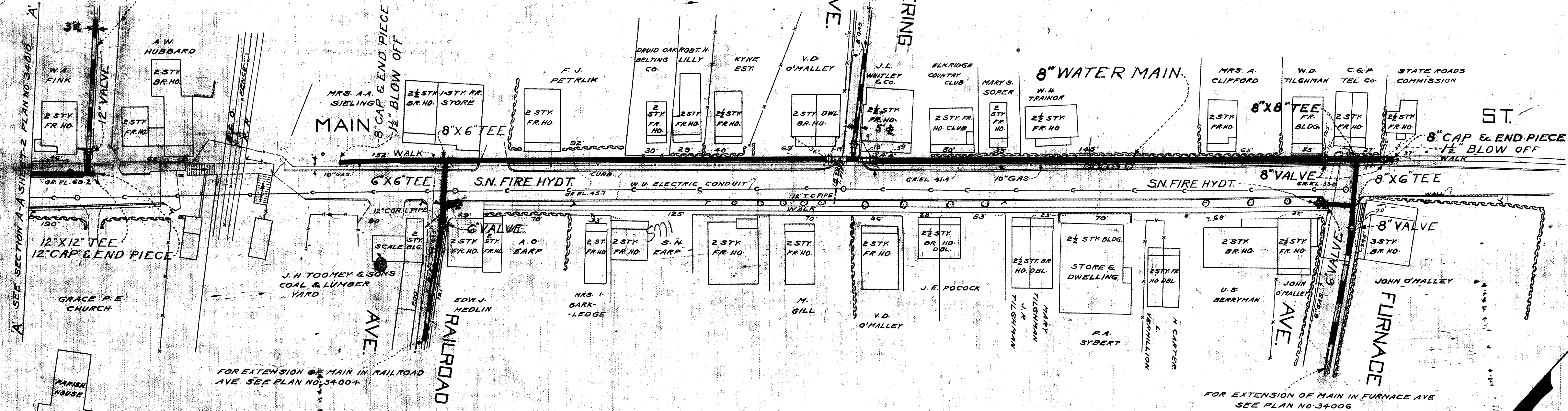


FOR EXTENSION OF MAIN IN LEVERING AVE. SEE PLAN NO. 34003

FOR EXTENSION OF MAIN SEE PLAN NO. 34018

FOR EXTENSION OF MAIN IN RAILROAD AVE. SEE PLAN NO. 34004

FOR EXTENSION OF MAIN IN FURNACE AVE SEE PLAN NO. 34006

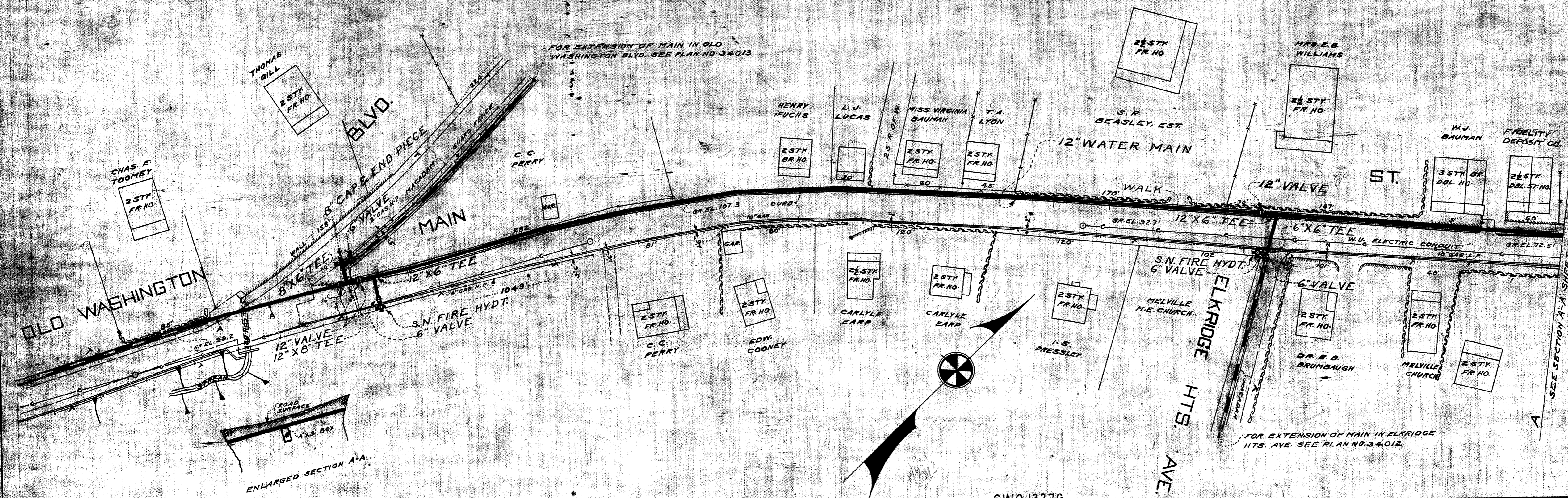


162' OF 6" DIA. CENTRIFUGAL PIPE, CLASS 250  
 891' OF 8" DIA. CENTRIFUGAL PIPE, CLASS 250  
 1247' OF 12" DIA. CENTRIFUGAL PIPE, CLASS 250

C.W.O. 13276

W 108° 30' 34"

DRAWN BY TRACED BY CHECKED BY DATE	PLANS PREPARED BY <i>Robert L. Harris &amp; N. F. Preston</i>	APPROVED BY COUNTY COMMISSIONERS <i>James A. [Signature]</i> DATE <i>May 22, 1934</i> <i>Hart B. Hall</i>	APPROVED FOR CITY OF BALTIMORE <i>Aug 8, 1934</i> <i>[Signature]</i> WATER ENGINEER	PROPOSED WATER IN MAIN ST FROM FURNACE AVE TO OLD WASHINGTON BOULEVARD ELKRIDGE	DRAWING NO. 1 OF 2	SCALE: 1"=50'	JOB NO. 34003 FILE
	ELKRIDGE WATER DISTRICT HOWARD COUNTY MARYLAND	APPROVED BY CITY OF BALTIMORE <i>[Signature]</i> CHIEF ENGINEER	MARYLAND	MARYLAND	MARYLAND	MARYLAND	MARYLAND



LIST OF FITTINGS		
QUANTITY	DESCRIPTION	SIZE
3	CAPS	8"
3	TEES	8" X 6"
1	TEE	12" X 12"
1	TEE	8" X 6"
4	VALVES	12"
3	VALVES	8"
7	VALVES	6"
1	TEE	12" X 8"
2	TEES	12" X 6"
2	TEES	6" X 6"
1	CAP	12"
2	BLOW OFF	12"
4	FIRE HYDT. SN	6"

C.W.O. 13276

DRAWN BY <i>W.P. Preston</i> CHECKED DATE	PLANS PREPARED BY <i>Robert C. Harris W.P. Preston</i> ELKRIDGE WATER DISTRICT HOWARD COUNTY MARYLAND	APPROVED BY COUNTY COMMISSIONERS <i>Samuel W. H. ...</i> DATE <i>May 22, 1934</i> <i>Harold B. ...</i>	APPROVED FOR CITY OF BALTIMORE DATE <i>Aug 8, 1934</i> <i>W.P. ...</i> WATER ENGINEER	PROPOSED WATER IN MAIN ST FROM FURNACE AVE. TO OLD WASHINGTON BOULEVARD ELKRIDGE MARYLAND	DRAWING NO. <i>2</i> OF <i>2</i> SCALE: 1" = 50' JOB NO. <i>34010</i> FILE
--	--	---	--	--	---

W 108 B 30347A