

LIST OF FITTINGS		
QUANTITY	DESCRIPTION	SIZE
3	TEES	12 X 8
6	SLEEVES	12"
2	TEES	6 X 6"
4	TEES	12 X 6"
5	VALVES	12"
6	VALVES	8"
7	VALVES	6"
4	FIRE HYDT. SN.	6"
2	FIRE HYDT. *	8"
0	BENDS	12" - 1/8
2	BENDS	12" - 1/2
0	BENDS	12" - 1/4
01	BEND	6" - 1/8
1	CAP	12"
1	TEE	8 X 8"
0	SLEEVE	8"
4	BENDS	6" - 1/2
1	TEE	8 X 6"

* DOUBLE STEAMER CONNECTION.

PLANS PREPARED BY
Robert C. Davis W. F. Preston

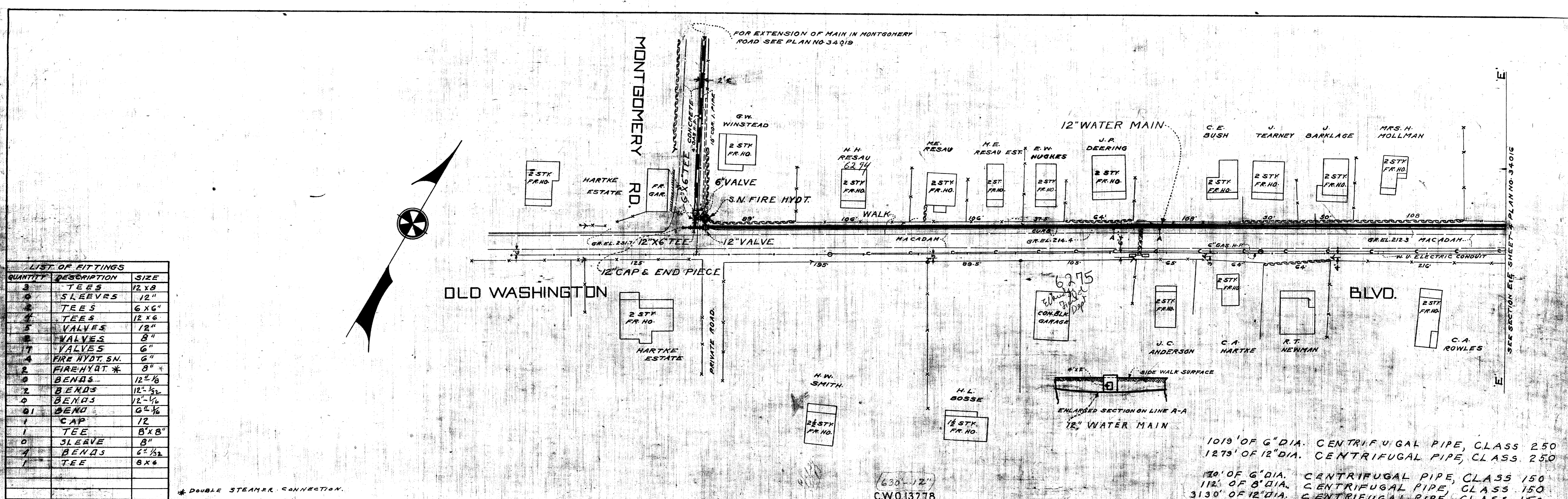
ELKRIDGE WATER DISTRICT
 HOWARD COUNTY MARYLAND

APPROVED BY COUNTY COMMISSIONERS
Paul H. Harris DATE *Aug 13, 1934*
Hart B. Hall

APPROVED FOR CITY OF BALTIMORE
 DATE *Aug 8, 1934*
W. H. ...
 WATER ENGINEER CHIEF ENGINEER

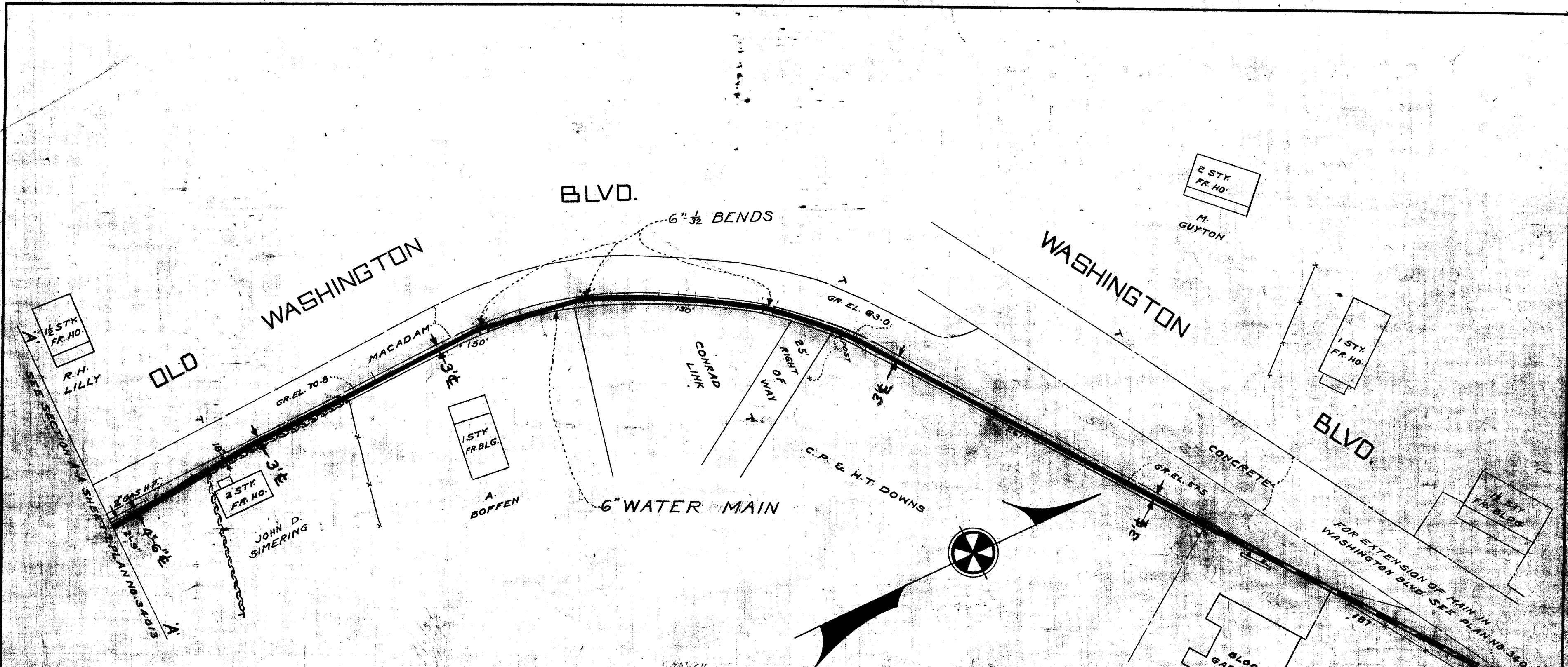
PROPOSED WATER IN OLD WASHINGTON BLVD.
 FROM WASHINGTON BLVD. TO MONTGOMERY RD.

DRAWING NO. 5 SCALE: 1" = 50'
 J.O. FILE NO. 34017



SEE SECTION E-F SHEET 3 PLAN NO. 34016

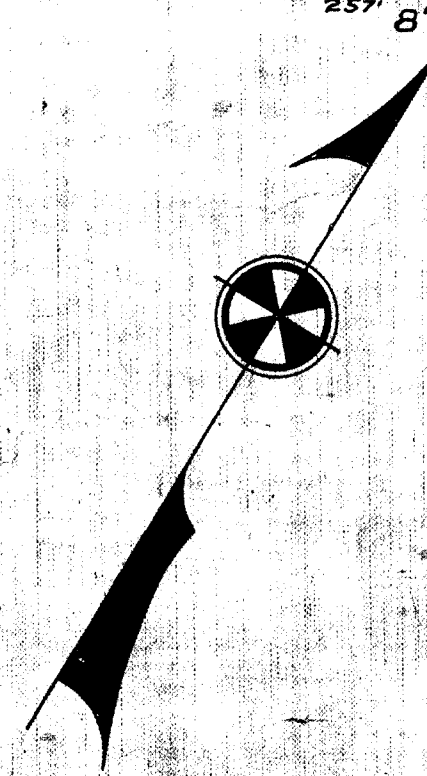
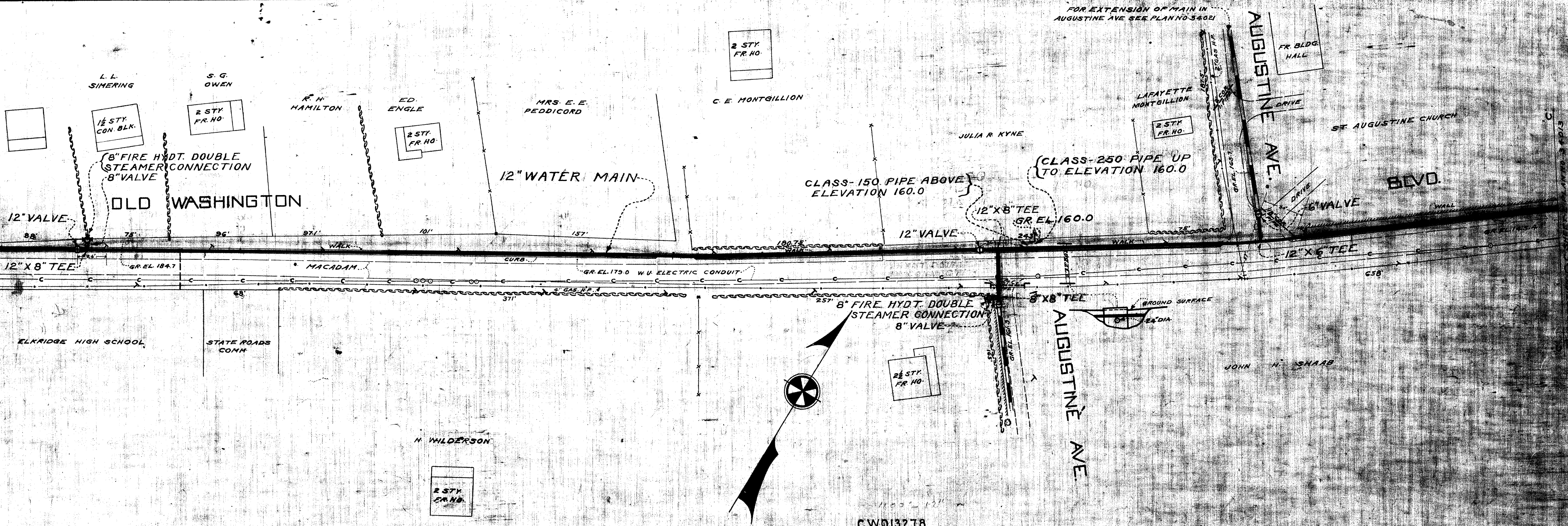
W 1080 30340 D



DRAWN R. Hughes TRACED R. Hughes CHECKED DATE	PLANS PREPARED BY <i>Robert E. Hoar W. F. Preston</i>	ELKRIDGE WATER DISTRICT HOWARD COUNTY MARYLAND		C.W.O. 13278	PROPOSED WATER IN OLD WASHINGTON BLVD. FROM WASHINGTON BLVD. TO MONTGOMERY RD.	DRAWING NO. 1	SCALE: 1"=50'	J.O. 34014 FILE
APPROVED BY COUNTY COMMISSIONERS <i>May 29 - 34</i> <i>Wm. Grafton Perry</i> <i>Hart B. Hall</i>		APPROVED FOR CITY OF BALTIMORE <i>Aug. 8, 1934</i> <i>Wm. H. Miller</i> WATER ENGINEER	APPROVED FOR CITY OF BALTIMORE <i>Aug. 8, 1934</i> <i>Wm. H. Miller</i> CHIEF ENGINEER ELKRIDGE	MARYLAND OF 5				

W108B 30340

D SEE SECTION D-D SHEET 4 PLAN NO. 34016

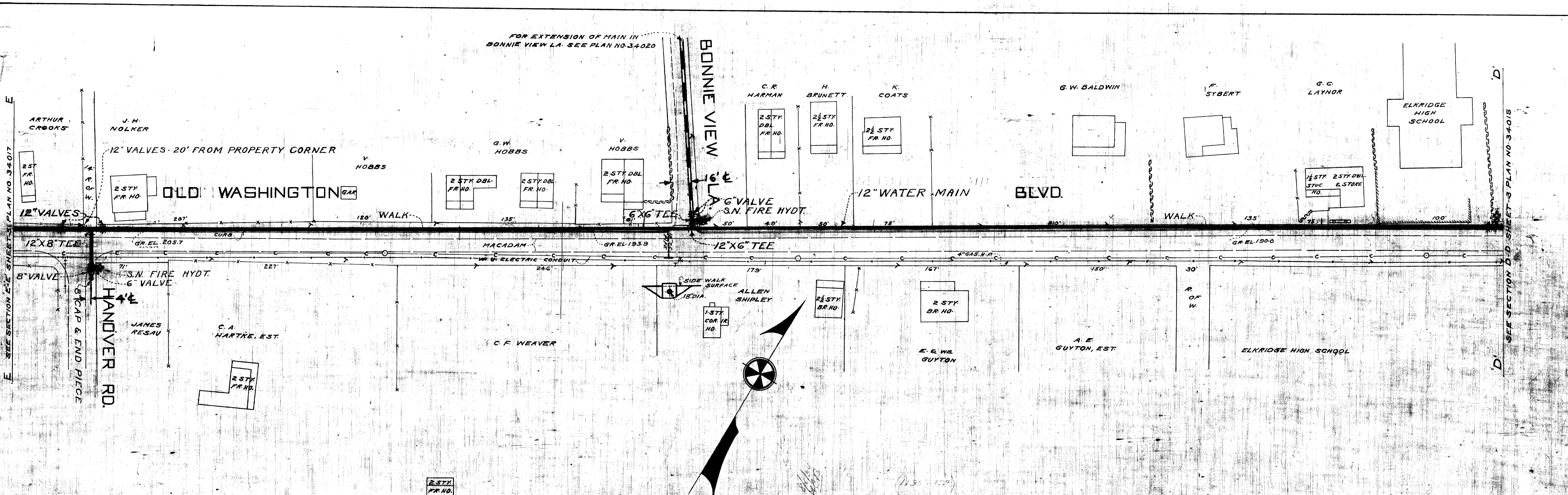


C.W. 13278

DRAWN BY TRACED BY CHECKED BY DATE	PLANS PREPARED BY <i>Robert Morris W. F. Preston</i>	APPROVED BY COUNTY COMMISSIONERS <i>James W. Smith</i> DATE <i>Aug 8 1936</i> <i>H. Grafton Perry</i> <i>Art B. Bell</i>	APPROVED FOR CITY OF BALTIMORE <i>Paul Smith</i> DATE <i>Aug 8 1936</i> <i>J. H. Hines</i> WATER ENGINEER CHIEF ENGINEER	PROPOSED WATER IN OLD WASHINGTON BLVD. FROM WASHINGTON BLVD. TO MONTGOMERY RD. ELKRIDGE MARYLAND	DRAWING NO. 3	SCALE: 1"=50'	SHEET NO. 5
	ELKRIDGE WATER DISTRICT HOWARD COUNTY MARYLAND				MARYLAND OF 5		

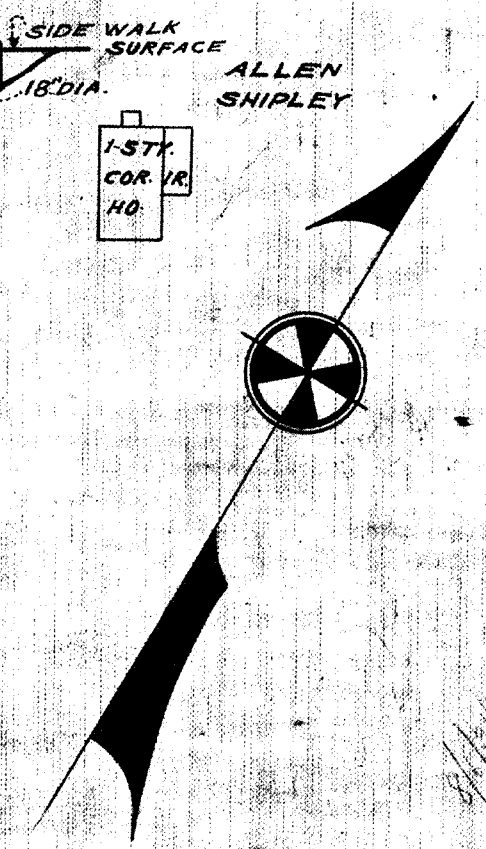
W 108^B 30340 B

FOR EXTENSION OF MAIN IN BONNIE VIEW LA. SEE PLAN NO. 34020



E SEE SECTION E-E SHEET 3 PLAN NO. 34017

D SEE SECTION D-D SHEET 3 PLAN NO. 34015

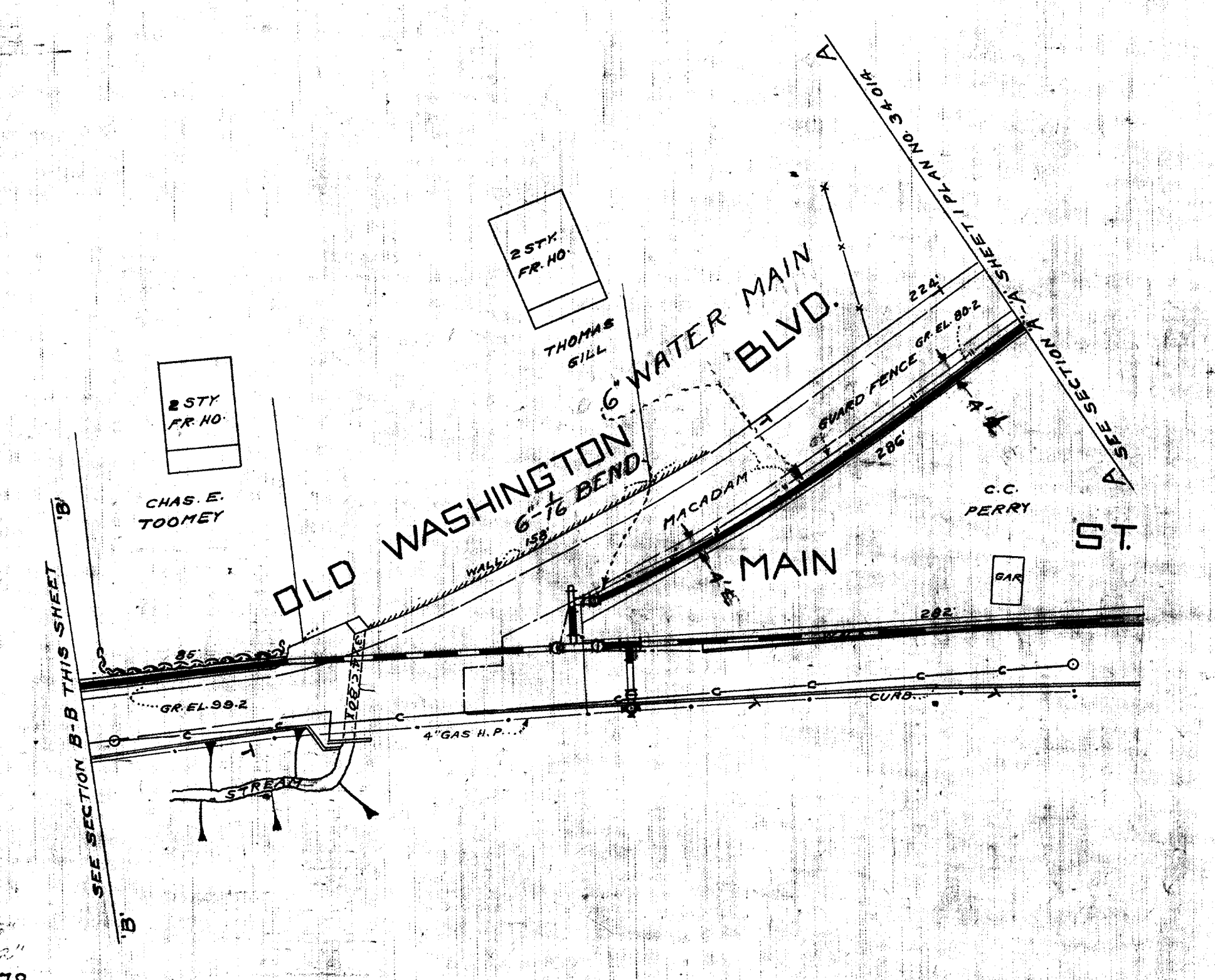
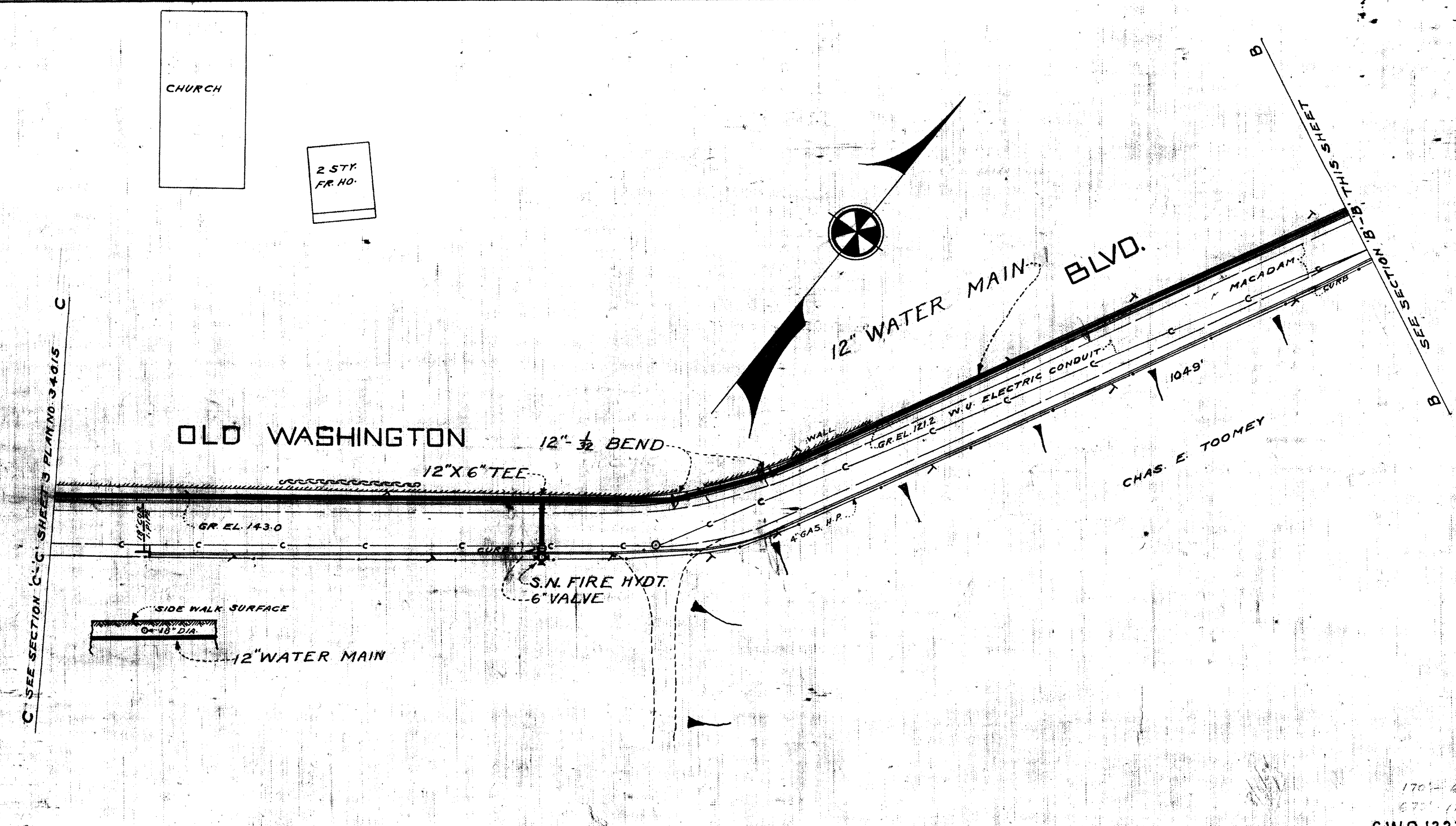


C.W.O. 13278

<p>DRAWN <i>[Signature]</i> TRACED <i>[Signature]</i> CHECKED DATE</p>	<p>PLANS PREPARED BY <i>[Signature]</i> ELKRIDGE WATER DISTRICT HOWARD COUNTY MARYLAND</p>	<p>APPROVED BY COUNTY COMMISSIONERS <i>[Signature]</i> DATE <i>[Date]</i> HART D. [Signature]</p>	<p>APPROVED FOR CITY OF BALTIMORE <i>[Signature]</i> DATE <i>[Date]</i></p>	<p>PROPOSED WATER IN OLD WASHINGTON BLVD. FROM WASHINGTON BLVD. TO MONTGOMERY RD.</p>	<p>DRAWING NO. 4 OF 5 SCALE: 1"=50'</p>	<p>J.O. 34016 FILE</p>
---	---	--	---	--	---	-------------------------------------

W 108 B 203400

CRUC 900174



1701 6"
671 12"
C.W.O. 13278

DRAWN BY TRACED BY CHECKED DATE	PLANS PREPARED BY <i>Robert C. Harris W. F. Preston</i>	ELKRIDGE WATER DISTRICT HOWARD COUNTY MARYLAND	APPROVED BY COUNTY COMMISSIONERS <i>10/24/34</i> <i>10/24/34</i> <i>10/24/34</i>	APPROVED FOR CITY OF BALTIMORE <i>1/3/34</i> <i>1/3/34</i>	PROPOSED WATER IN OLD WASHINGTON BLVD. FROM WASHINGTON BLVD. TO MONTGOMERY RD. ELKRIDGE	DRAWING NO. 2 OF 5	SCALE: 1" = 50'	J.O. 34013 FILE
--	--	---	---	--	---	-----------------------	--------------------	-----------------------

W 108^B 30340A