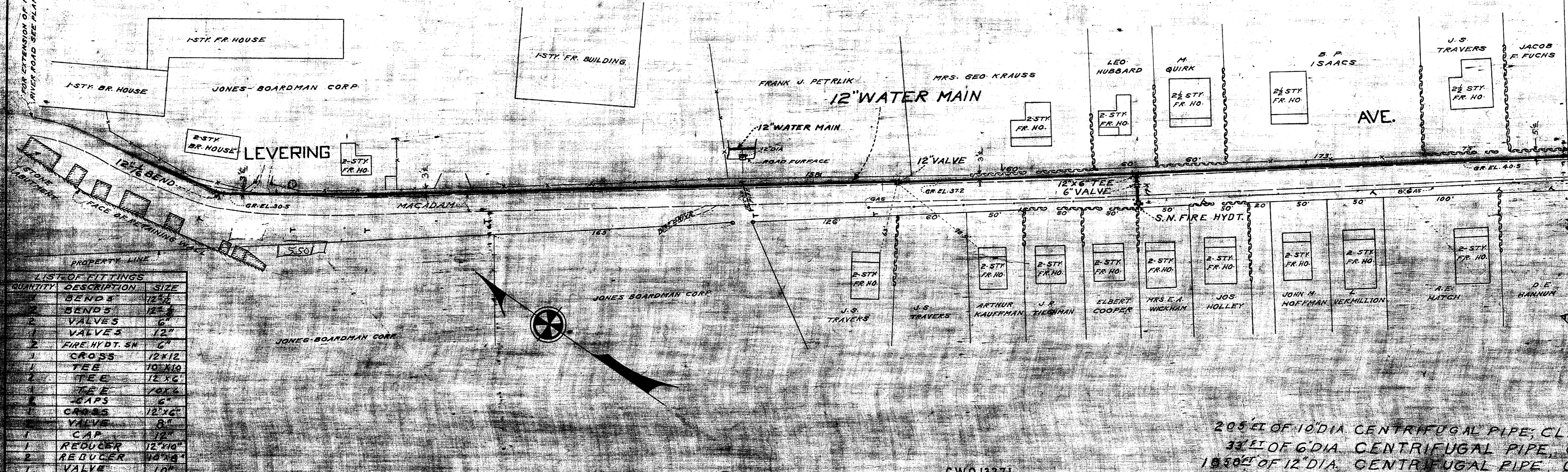


FOR EXTENSION OF MAIN IN RIVER ROAD SEE PLAN NO. 34001



PROPERTY LINE

QUANTITY	DESCRIPTION	SIZE
2	BENDS	12" x 12"
2	BENDS	12" x 6"
2	VALVES	6"
1	VALVE	12"
2	FIRE HYDT. SN	6"
1	CROSS	12" x 12"
1	TEE	10" x 10"
2	TEE	12" x 6"
1	TEE	10" x 6"
2	CAPS	6"
1	CROSS	12" x 6"
1	VALVE	8"
1	CAP	12"
1	REDUCER	12" x 10"
2	REDUCER	10" x 8"
1	VALVE	10"

205' FT OF 10" DIA CENTRIFUGAL PIPE, CLASS-250  
 33' FT OF 6" DIA CENTRIFUGAL PIPE, CLASS 250  
 1850' FT OF 12" DIA. CENTRIFUGAL PIPE CLASS 250

C.W.O. 13271

PLANS PREPARED BY <i>Robert C. ...</i>	ELKRIDGE WATER DISTRICT HOWARD COUNTY MARYLAND	APPROVED BY COUNTY COMMISSIONERS <i>...</i>	APPROVED FOR CITY OF BALTIMORE Aug 2 1934 <i>...</i>	PROPOSED WATER IN LEVERING AVE FROM MAIN ST TO A POINT 440' EAST OF LAWYERS HILL ROAD.	DRAWING NO. 1	SCALE 1"=50'	34001
---	---	--	--	--	---------------	--------------	-------

W105 30338