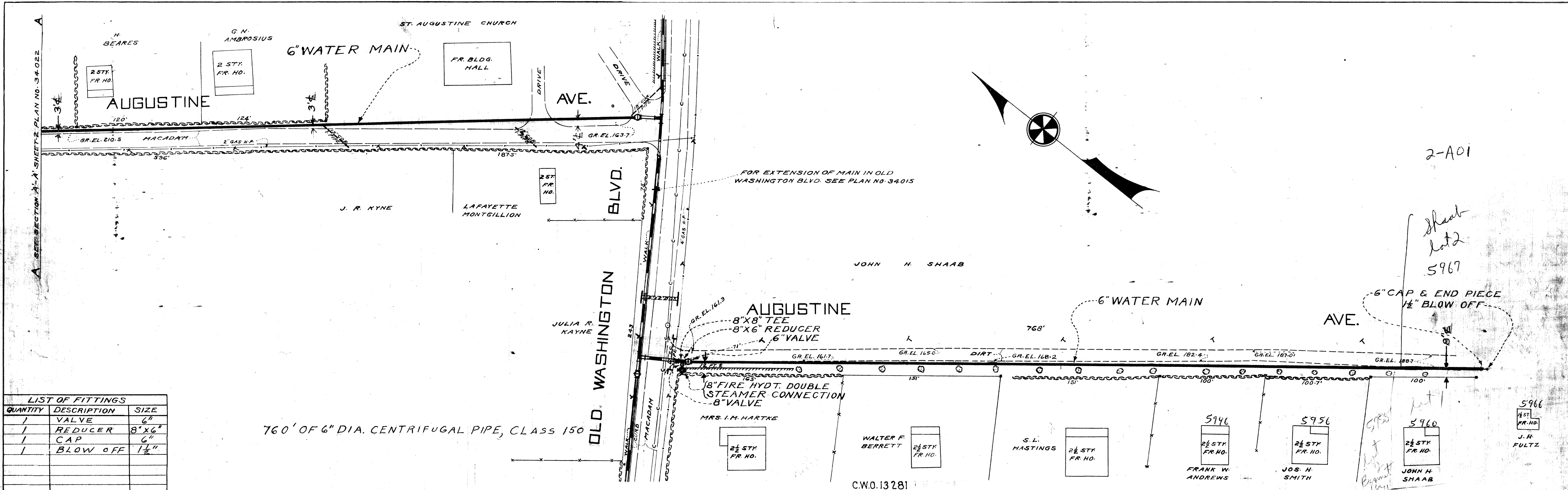


A SECTION A-A SHEET-2 PLAN NO. 34-022



| LIST OF FITTINGS |             |         |
|------------------|-------------|---------|
| QUANTITY         | DESCRIPTION | SIZE    |
| 1                | VALVE       | 6"      |
| 1                | REDUCER     | 8" X 6" |
| 1                | CAP         | 6"      |
| 1                | BLOW OFF    | 1 1/2"  |

760' OF 6" DIA. CENTRIFUGAL PIPE, CLASS 150

PLANS PREPARED BY  
*Robert Collier N.F. Preston*

ELKRIDGE WATER DISTRICT  
 HOWARD COUNTY MARYLAND

APPROVED BY COUNTY COMMISSIONERS  
*Wm. B. Hall*  
 DATE *Aug 13, 1937*

APPROVED FOR CITY OF BALTIMORE  
*Wm. B. Hall*  
 DATE *Aug 8, 1937*  
 WATER ENGINEER

PROPOSED WATER IN AUGUSTINE AVE. FROM  
 OLD WASHINGTON BLVD. NORTHWESTERLY  
 AND SOUTHEASTERLY  
 ELKRIDGE MARYLAND

DRAWING NO. 1 OF 2

SCALE: 1" = 50'

J.O. FILE 34021

2-A01

Sheet Lot 2  
 5967

6" CAP & END PIECE 1 1/2" BLOW OFF

5966  
 1/2 STY. FR. HO.  
 J. H. FULTZ

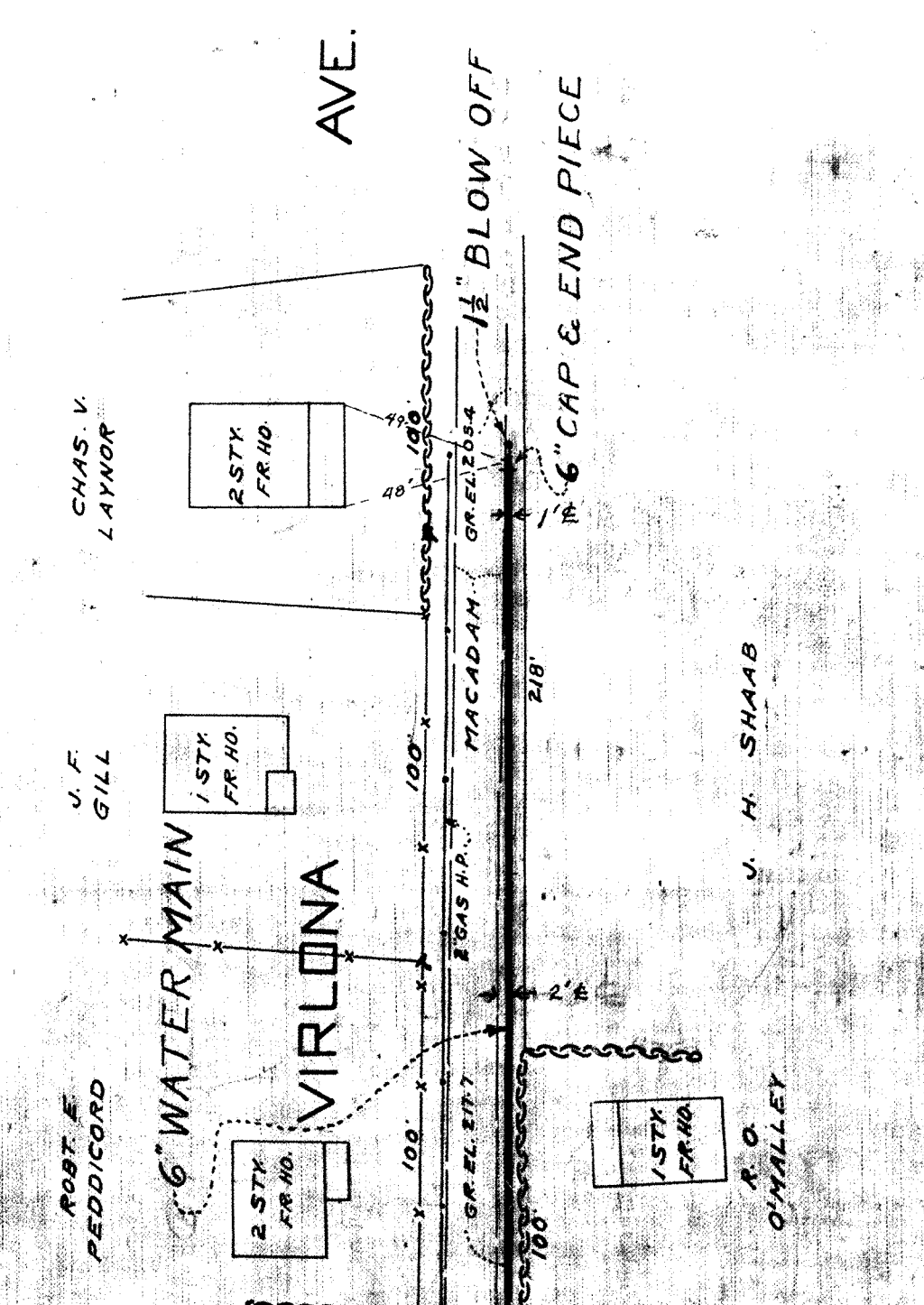
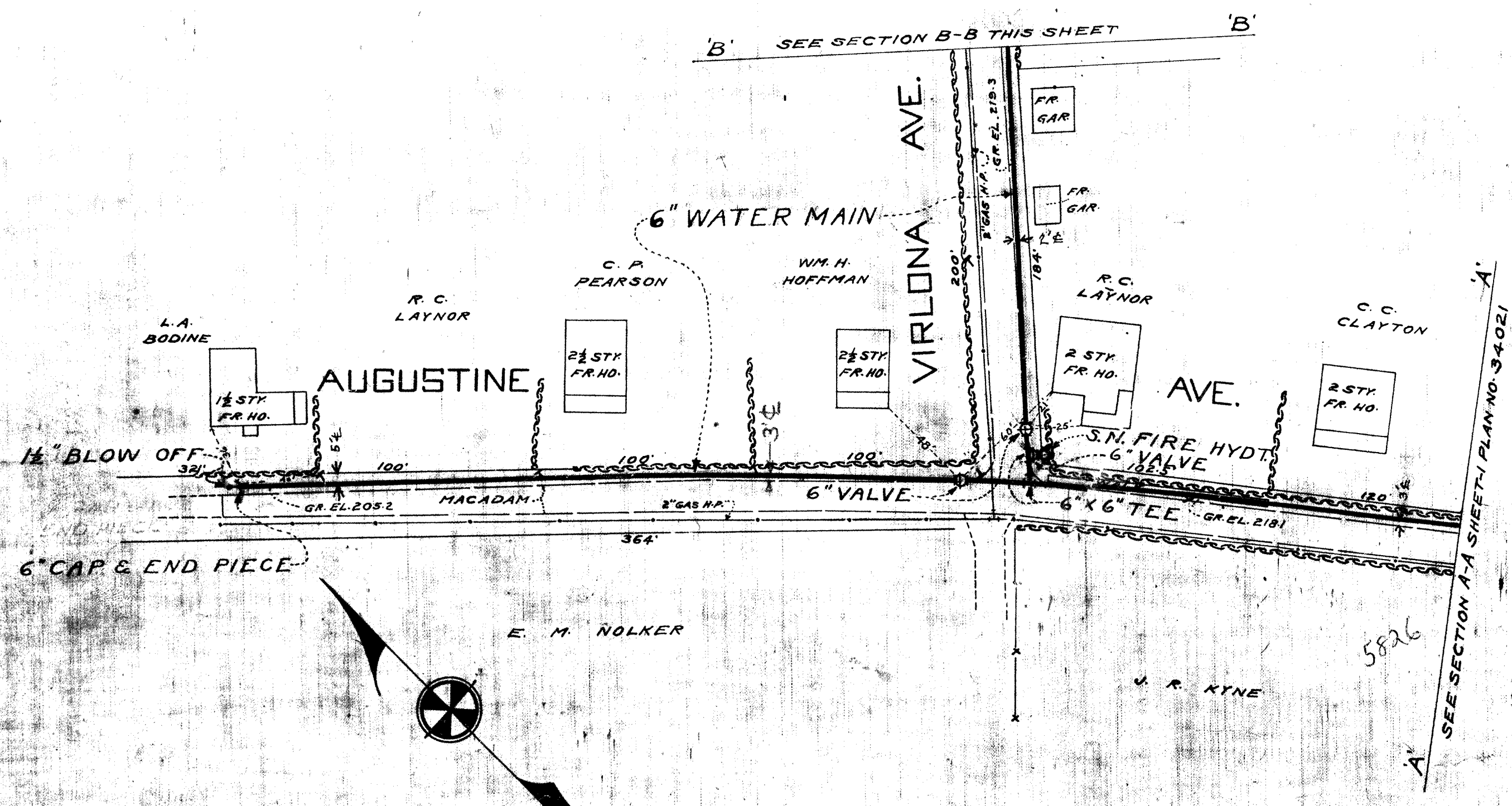
5946  
 2 1/2 STY. FR. HO.  
 FRANK W. ANDREWS

5956  
 2 1/2 STY. FR. HO.  
 JOS. H. SMITH

5960  
 2 1/2 STY. FR. HO.  
 JOHN H. SHAAB

C.W.O. 13281

W 1088 30215



| LIST OF FITTINGS |                |       |
|------------------|----------------|-------|
| QUANTITY         | DESCRIPTION    | SIZE  |
| 2                | CAP            | 6"    |
| 2                | BLOW OFF       | 1/2"  |
| 1                | FIRE HYDT. SM. | 6"    |
| 2                | TEES           | 6"x6" |
| 3                | VALVES         | 6"    |

430' OF 6" DIA. CENTRIFUGAL PIPE, CLASS 150 IN VIRLONA AVE.  
 1174' OF 6" DIA. CENTRIFUGAL PIPE, CLASS 150 IN AUGUSTINE AVE.

|   |   |   |   |                                   |   |               |               |                    |
|---|---|---|---|-----------------------------------|---|---------------|---------------|--------------------|
| DRAWN BY<br>TRACED BY<br>CHECKED BY<br>DATE | PLANS PREPARED BY<br><i>Robert C. ... W. F. Preston</i> | APPROVED BY COUNTY COMMISSIONERS<br><i>[Signatures]</i> | APPROVED FOR CITY OF BALTIMORE<br>DATE <i>Aug 8, 1934</i> | PROPOSED WASHING<br>PROPOS<br>ALL | TINE AVE FROM OLD<br>NORTHWESTERLY<br>VONA AVE FROM<br>TRIY | DRAWING NO. 2 | SCALE: 1"=50' | J.O. FILE<br>34022 |
|---|---|---|---|-----------------------------------|---|---------------|---------------|--------------------|