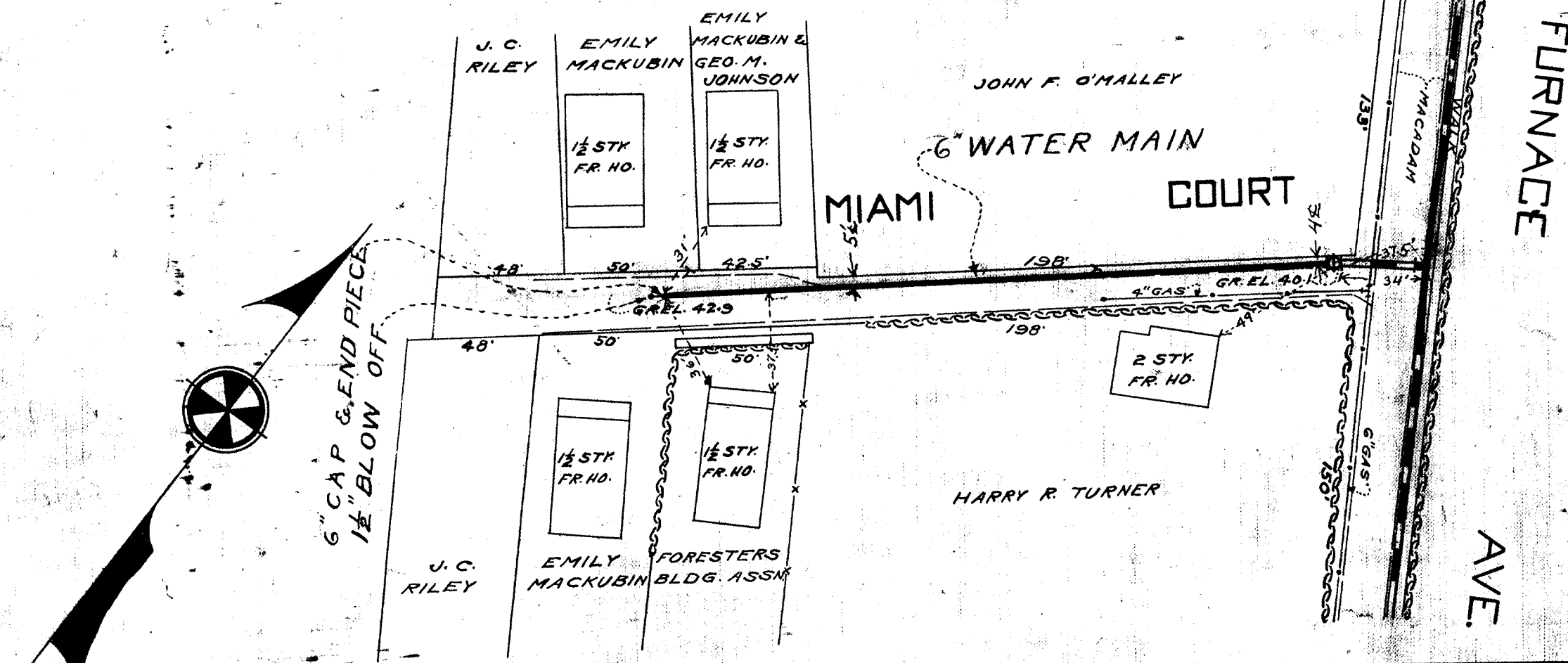


FOR EXTENSION OF MAIN IN FURNACE AVE.
SEE PLAN NO. 3400G



LIST OF FITTINGS		
QUANTITY	DESCRIPTION	SIZE
1	CAP	6"
1	BLOW OFF	1 1/2"

244 FT OF 6" DIA. CENTRIFUGAL PIPE, CLASS 250
C.W.O. 13275

DRAWN <i>R. Hughes</i> TRACED <i>R. Hughes</i> CHECKED DATE	PLANS PREPARED BY <i>Robert C. Norris W. F. Preston</i>	ELKRIDGE WATER DISTRICT HOWARD COUNTY MARYLAND	APPROVED BY COUNTY COMMISSIONERS <i>May 22, 1934</i> <i>Samuel W. Gaither</i> <i>Hart B. Hall</i>
	APPROVED FOR CITY OF BALTIMORE <i>Aug. 8, 1934</i> DATE <i>Paul Small</i> CHIEF ENGINEER	PROPOSED WATER IN MIAMI COURT FROM FURNACE AVE WESTERLY 310 FT ELKRIDGE.	DRAWING NO. <i>L</i>