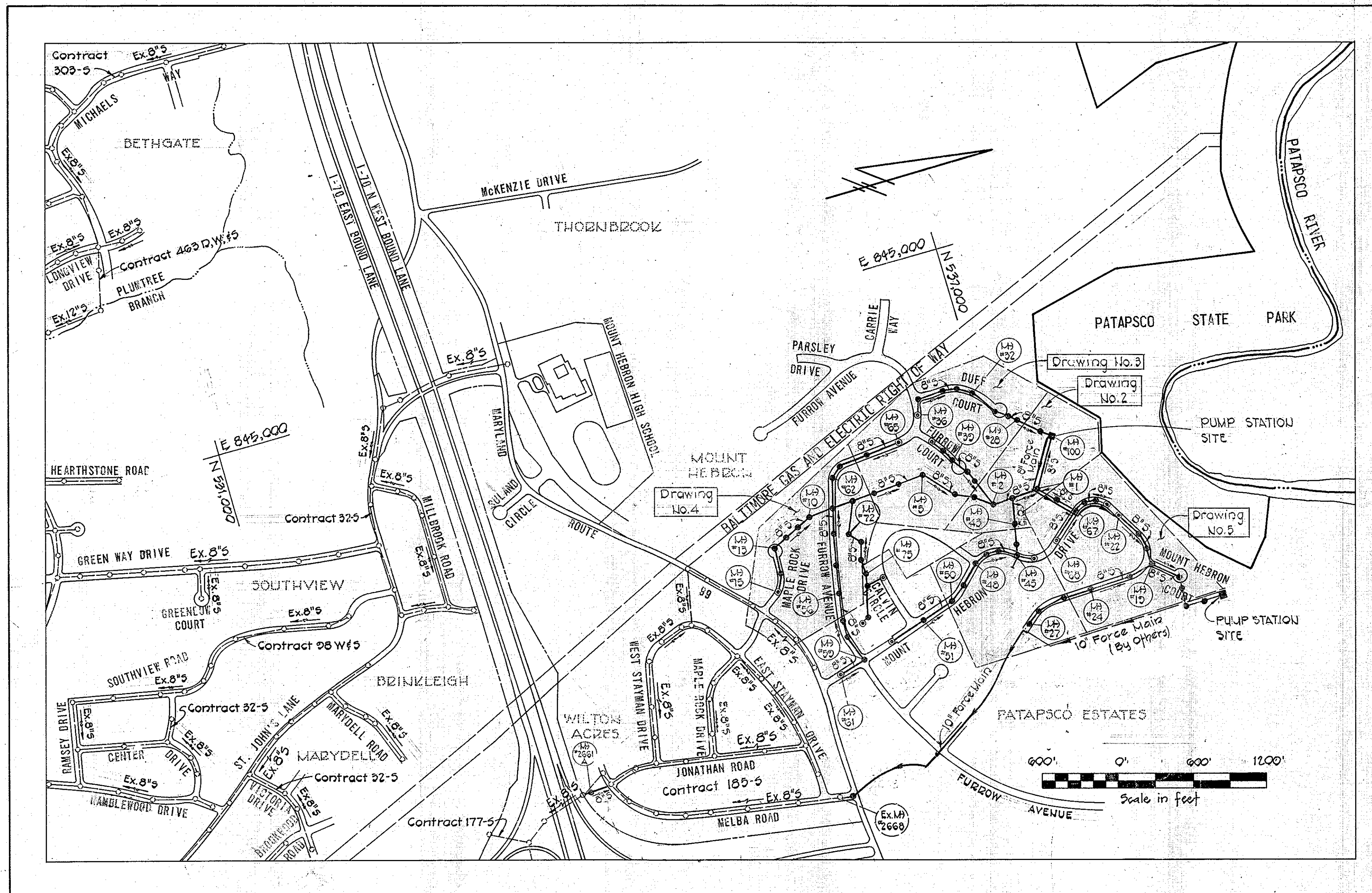


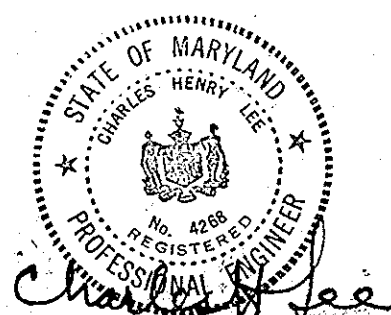
QUANTITIES		
Item	Estimated	As-Built
8" Force Main	710	709
10" Sewer	3835	3473
6" Sewer	1210	1378
Manholes	300	312



GENERAL NOTES

- Approximate location of existing utilities is shown. The Contractor shall take all necessary precautions to protect existing utilities and to maintain uninterrupted service. Any damage incurred shall be repaired immediately to the satisfaction of the Engineer by the Contractor at the Contractor's expense.
- The Contractor shall locate existing utilities a minimum of two weeks in advance of construction operations in vicinity of utilities. Cost shall be included in the unit prices bid for excavation and backfill for mains.
- Contractor shall notify the following utilities or agencies at least five (5) days before starting work shown on these plans:
 Miss Utility (Collect) 1-559-0100
 Baltimore Gas & Electric Company - Underground Electric Distribution Engineering "Damage Control" Mr. G. J. Zeller, Manager - 234-5681
 Baltimore Gas & Electric Company - Underground Gas Distribution Engineering, Mr. Bell - 234-5533
 Chesapeake and Potomac Telephone Co. - 725-9976
 State Highway Administration 531-5533
- Clear all utilities by a minimum of 6". Clear all poles 2'-0" minimum or tunnel as required. Cost for tunneling or bracing at poles shall be included in the unit prices bid for excavation and backfill for sewer mains.
- All pipe elevations shown are invert elevations.
- All manholes shall be 4'-0" inside diameter.
- The Contractor shall provide a pipe joint in each sewer main within 2'-0" of exterior of manhole walls.
- Watertight manhole frame and cover to be used where indicated on drawings Standard Details S-12 (RCR-63A). Where watertight manhole frame and cover is used, set top of frame 1'-8" above finished grade.
- For details not shown on the Contract Drawings see Standard Details bound in the specifications.
- Trees are to be protected from damage to the maximum extent.
- Contractor shall remove trees, stumps and roots along line of excavation as directed by the Engineer. Payment for such removal shall be included in the unit price bid for excavation and backfill for sewer mains.
- Place regulation "Men Working" and warning signs as required to comply with Maryland State Highway Administration Manual of Traffic Control for Highway Construction and Maintenance Operations.
- All sewer mains shall be C.S.P.X., V.C.P.X., or A.C.P. Class 2400, unless otherwise noted.
- Force mains shall be ductile iron from Class 51 in accordance with Section 8 of the specifications. Force mains shall have a minimum of 4 feet of cover.
- Buttress or anchor all force main fittings with concrete. For details see Standard Details bound in the Specifications.
- Horizontal and vertical controls are based on the Maryland State Grid Coordinate System.

CAPITAL PROJECT S-4-6037
CONTRACT NO. 744-S-A
MOUNT HEBRON SANITARY SEWERS
HOWARD COUNTY, MARYLAND
DEPARTMENT OF PUBLIC WORKS

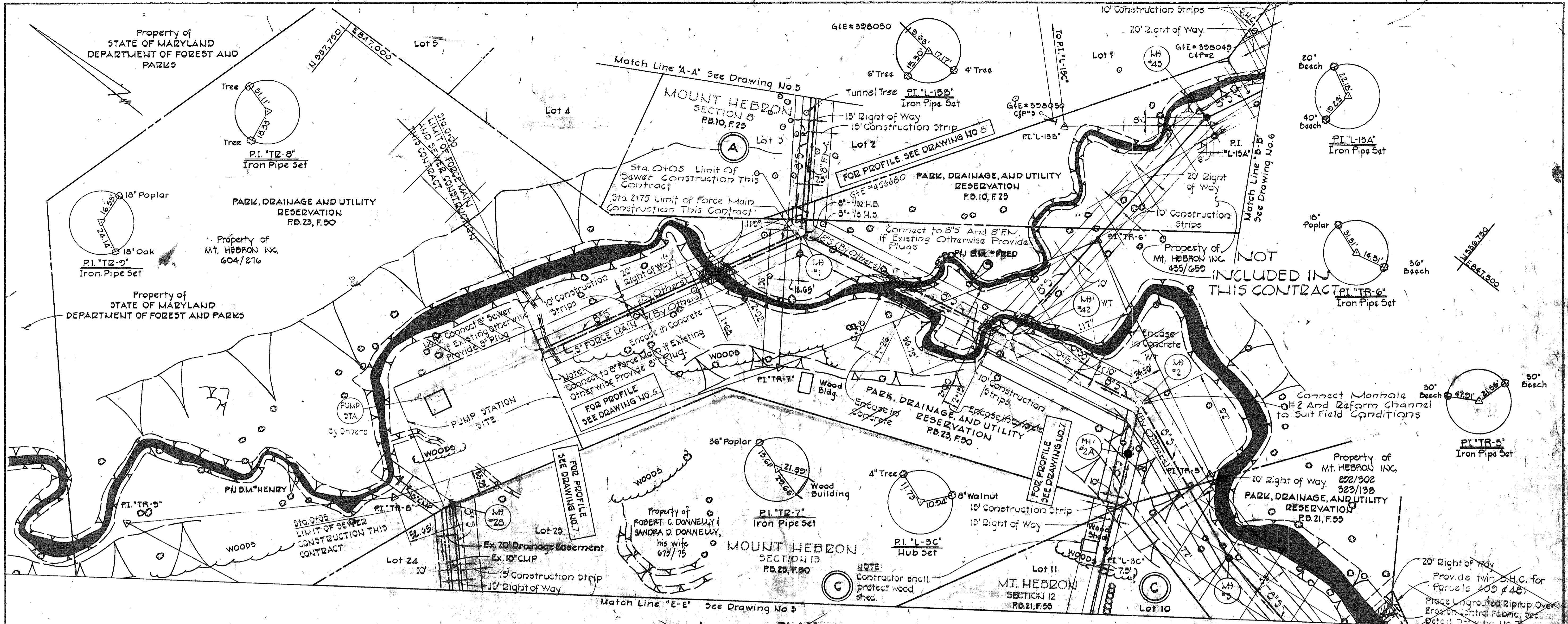


CONTRACT NO. 744-S-A
 MOUNT HEBRON SEWER MAIN EXTENSION
 HOWARD COUNTY CAPITAL PROJECT S-4-6037

PURDUM & JESCHKE ENGINEERS 1023 N. CALVERT ST. BALTIMORE, MARYLAND	DEPARTMENT OF PUBLIC WORKS HOWARD COUNTY, MARYLAND <i>P. P. Ross</i> 8-30-77 DIRECTOR OF PUBLIC WORKS DATE	CONTRACT NO. 744-S-A CAPITAL PROJECT NO. S-4-6037 <i>W. O. Libot</i> 8-29-77 CHIEF BUREAU OF ENGINEERING DATE	LOCATION MAP OF SANITARY SEWERS	MOUNT HEBRON SEWER MAINS ELECTION DISTRICT NO. 2 HOWARD COUNTY, MARYLAND	DRAWING NO. 1 OF 8	SCALE As Shown	MAPS 234-42 235-41 235-42

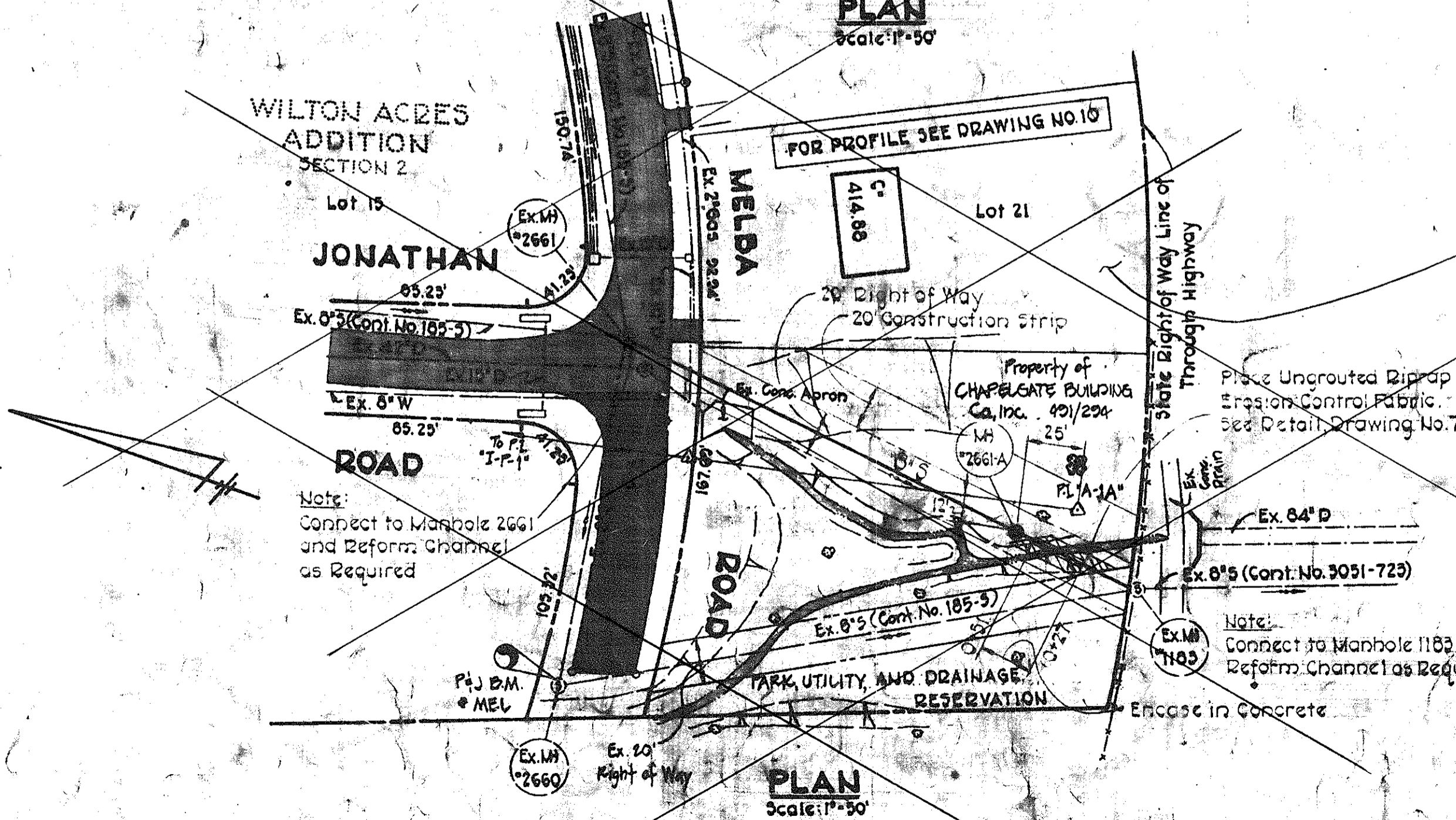
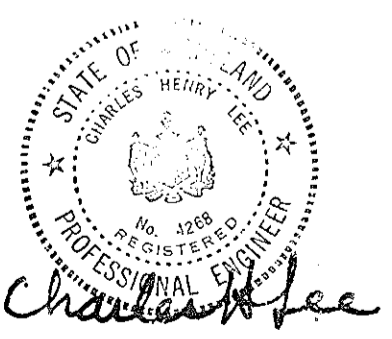
W.S. 744-S-A/1

AS BUILT JULY 1981



BENCH MARKS

P & J B.M. # HENRY	ELEV. 320.188
R.R. Spike in 16" Oak 100'± N.W. of traverse P.I. "TR-8"	
P & J B.M. # FRED	ELEV. 347.277
R.R. Spike in 12" Oak 130'± N.W. of traverse P.I. "TR-6"	
P & J B.M. # MEL	ELEV. 412.05
+ Cut on rim of Manhole #2660 117'± West of P.I. "A-1"	



CONTRACT NO. 744-S-A
MOUNT HEBRON SEWER MAIN EXTENSION
HOWARD COUNTY CAPITAL PROJECT S-4-6037

PURDUM & JESCHKE
ENGINEERS
1023 N. CALVERT ST.
BALTIMORE, MARYLAND

DEPARTMENT OF PUBLIC WORKS
HOWARD COUNTY, MARYLAND
8-30-77

CONTRACT NO. 744-S-A
CAPITAL PROJECT NO. S-4-6037

PLAN
MOUNT HEBRON SEWER MAINS

MOUNT HEBRON SEWER MAINS
ELECTION DISTRICT NO. 2
HOWARD COUNTY, MARYLAND

DRAWING
NO. 12
OF 8
SCALE
1"=50'

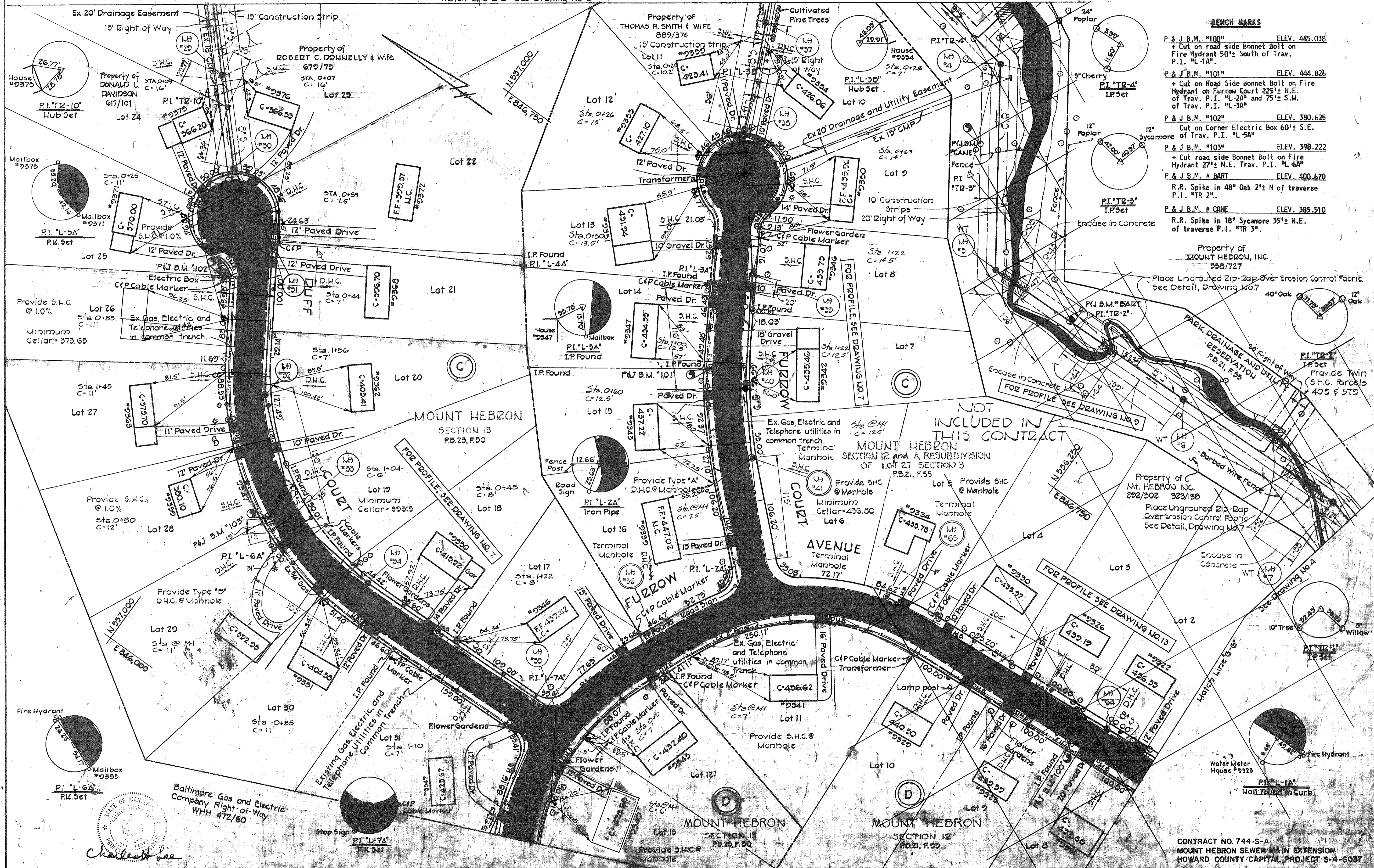
NO. BUILTS JULY 1981

115 744-S-A/2

Match Line "E-E" See Drawing No 2

BENCH MARKS

- P & J B.M. "100" ELEV. 445.038
+ Cut on road side Bonnet Bolt on Fire Hydrant 50'± South of Trav. P.I. "L-1A"
- P & J B.M. "101" ELEV. 444.826
+ Cut on Road Side Bonnet Bolt on Fire Hydrant on Furrow Court 225'± N.E. of Trav. P.I. "L-2A" and 75'± S.W. of Trav. P.I. "L-3A"
- P & J B.M. "102" ELEV. 380.625
Cut on Corner Electric Box 60'± S.E. of Trav. P.I. "L-5A"
- P & J B.M. "103" ELEV. 398.222
+ Cut road side Bonnet Bolt on Fire Hydrant 27'± N.E. Trav. P.I. "L-6A"
- P & J B.M. # BART ELEV. 400.670
R.R. Spike in 48" Oak 2'± N of traverse P.I. "TR-2"
- P & J B.M. # CANE ELEV. 385.510
R.R. Spike in 18" Sycamore 35'± N.E. of traverse P.I. "TR-3"



NOT INCLUDED IN THIS CONTRACT

MOUNT HEBRON SECTION 12 AND A RESUBDIVISION OF LOT 27 SECTION 3 P.B. 21, F. 50

MOUNT HEBRON SECTION 13 P.B. 23, F. 50

FUZZOW

AVENUE COURT

CONTRACT NO. 744-S-A
MOUNT HEBRON SEWER MAIN EXTENSION
HOWARD COUNTY CAPITAL PROJECT S-4-6037

PURDUM & JESCHKE
ENGINEERS
1023 N. CALVERT ST.
BALTIMORE, MARYLAND

DEPARTMENT OF PUBLIC WORKS
HOWARD COUNTY, MARYLAND
DIRECTOR OF PUBLIC WORKS

CONTRACT NO. 744-S-A
CAPITAL PROJECT NO. S-4-6037

PLAN
MOUNT HEBRON SEWER MAINS

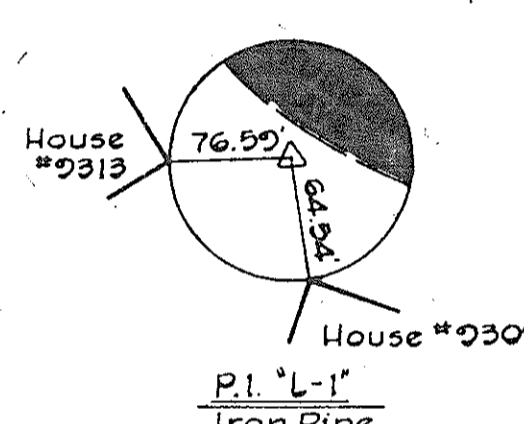
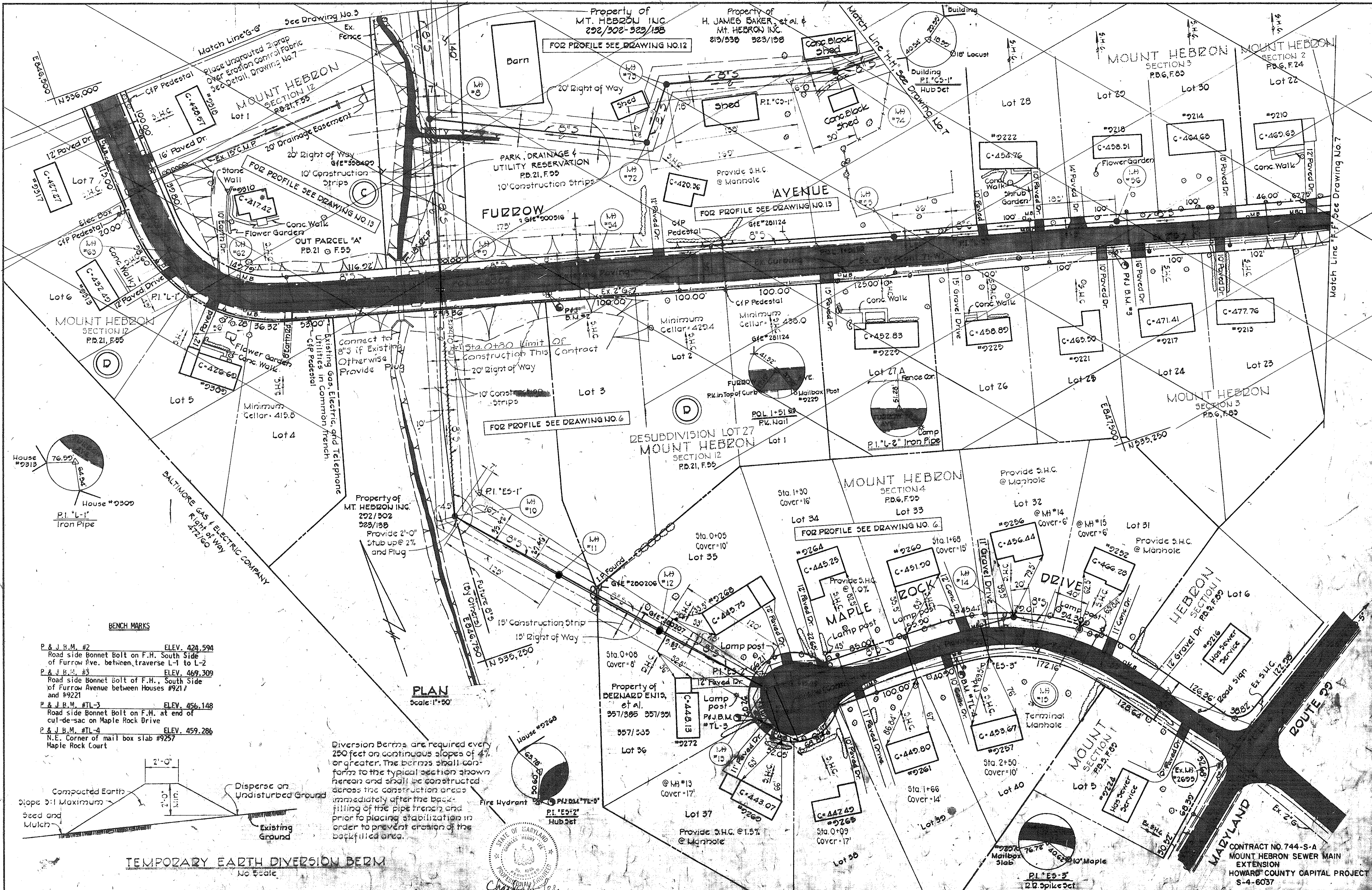
MOUNT HEBRON SEWER MAINS
ELECTION DISTRICT NO. 2
HOWARD COUNTY, MARYLAND

DRAWING
NO. 3
OF 8
SCALE
1"=50'

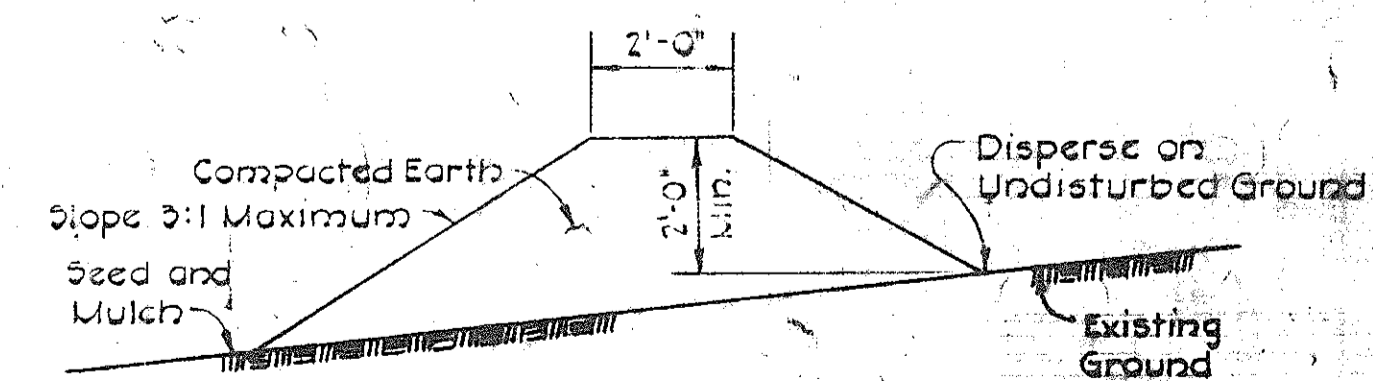
Designed: REP
Drafted: ARZ
Checked: REP
Nov. 7, 1979

WS 744-S-A/3

AS BUILT - JULY 1981

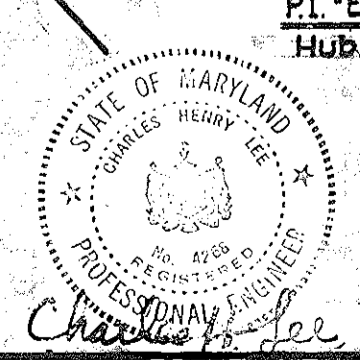


- BENCH MARKS**
- P. & J. B. M. #2 ELEV. 424.594
Road side Bonnet Bolt on F.H. South Side of Fuzzow Ave. between traverse L-1 to L-2
 - P. & J. B. M. #3 ELEV. 469.309
Road side Bonnet Bolt of F.H., South Side of Fuzzow Avenue between Houses #9217 and #9221
 - P. & J. B. M. #TL-3 ELEV. 456.148
Road side Bonnet Bolt on F.H. at end of cul-de-sac on Maple Rock Drive
 - P. & J. B. M. #TL-4 ELEV. 459.286
N.E. Corner of mail box slab #9257 Maple Rock Court



TEMPORARY EARTH DIVERSION BERM
No Scale

Diversion Berms are required every 250 feet on continuous slopes of 4% or greater. The berms shall conform to the typical section shown herein and shall be constructed across the construction area immediately after the backfilling of the pipe trench and prior to placing stabilization in order to prevent erosion of the backfilled area.



PURDUM & JESCHKE ENGINEERS
1023 N. CALVERT ST.
BALTIMORE, MARYLAND

DEPARTMENT OF PUBLIC WORKS
HOWARD COUNTY, MARYLAND
DIRECTOR OF PUBLIC WORKS DATE: 8-10-17 CHIEF BUREAU OF ENGINEERING DATE:

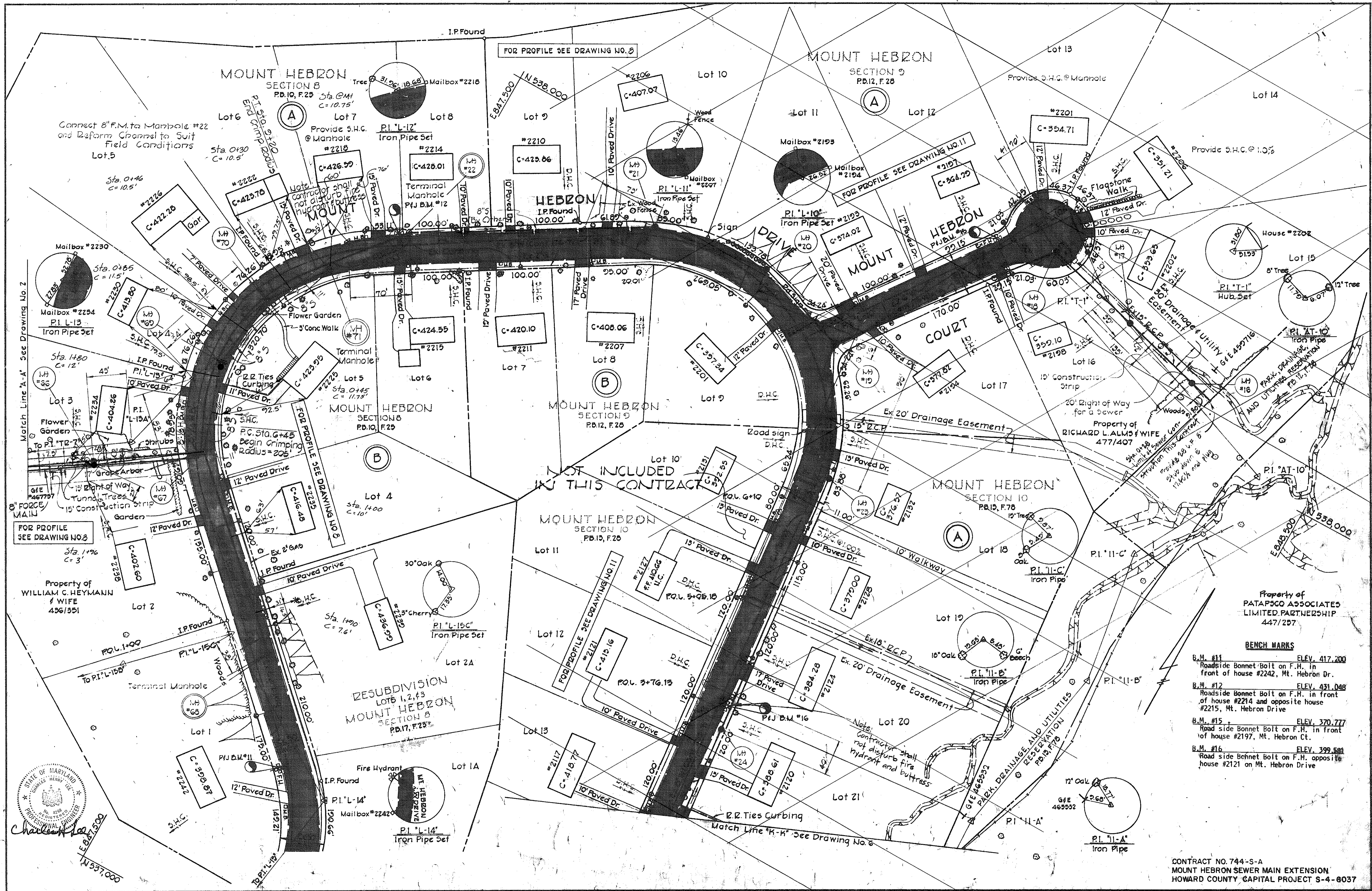
CONTRACT NO. 744-S-A
CAPITAL PROJECT NO. S-4-6037

PLAN AND DETAILS
MOUNT HEBRON SEWER MAINS

MOUNT HEBRON SEWER MAINS
ELECTION DISTRICT NO. 2
HOWARD COUNTY, MARYLAND

DRAWING NO. 4 OF 8
SCALE: As Shown
Designed: REP
Checked: REP
Nov. 7, 1979

WS 744-S-A/4



Property of PATAPSCO ASSOCIATES LIMITED PARTNERSHIP 447/297

BENCH MARKS

B.M. #11	ELEV. 417.200
Roadside Bonnet Bolt on F.H. in front of house #2242, Mt. Hebron Dr.	
B.M. #12	ELEV. 431.048
Roadside Bonnet Bolt on F.H. in front of house #2214 and opposite house #2215, Mt. Hebron Drive	
B.M. #15	ELEV. 370.777
Road side Bonnet Bolt on F.H. in front of house #2197, Mt. Hebron Ct.	
B.M. #16	ELEV. 399.588
Road side Bonnet Bolt on F.H. opposite house #2121 on Mt. Hebron Drive	



PURDUM & JESCHKE
ENGINEERS
1023 N. CALVERT ST.
BALTIMORE, MARYLAND

DEPARTMENT OF PUBLIC WORKS
HOWARD COUNTY, MARYLAND
8-30-77
DIRECTOR OF PUBLIC WORKS DATE

CONTRACT NO. 744-S-A
CAPITAL PROJECT NO. S-4-6037

PLAN
MOUNT HEBRON SEWER MAINS

MOUNT HEBRON SEWER MAINS
ELECTION DISTRICT NO. 2
HOWARD COUNTY, MARYLAND

DRAWING NO. 5 OF 8
SCALE 1"=50'
Designed: REP
Drafted: ABZ
Checked: REP
Nov. 7, 1979

WS 744-S-A/5

WS 744-S-A/6



PURDUM & JESCHKE
ENGINEERS
1023 N. CALVERT ST.
BALTIMORE, MARYLAND

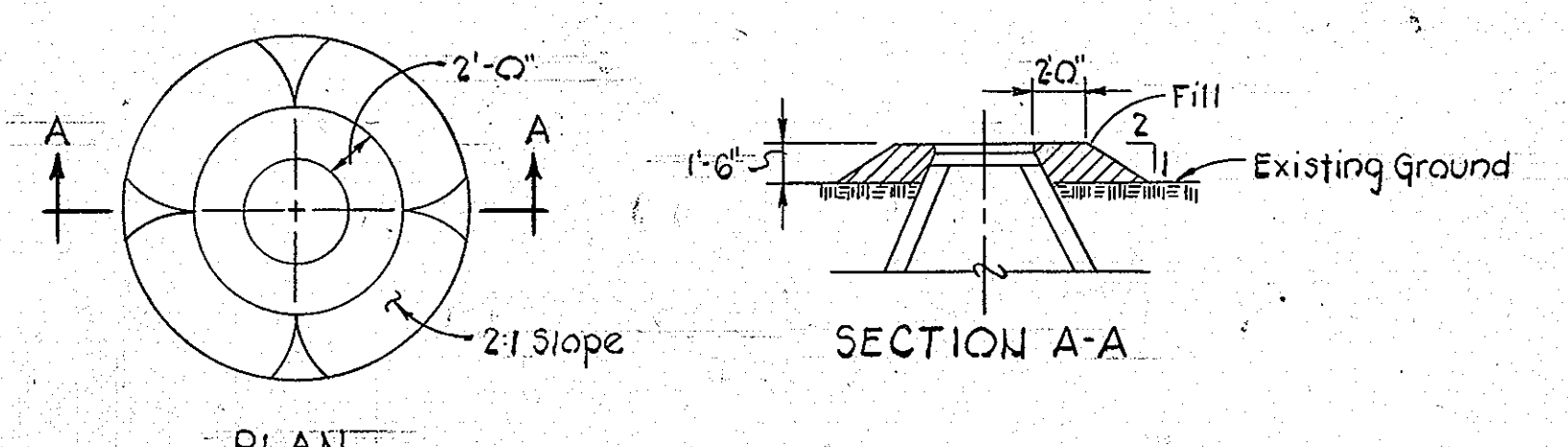
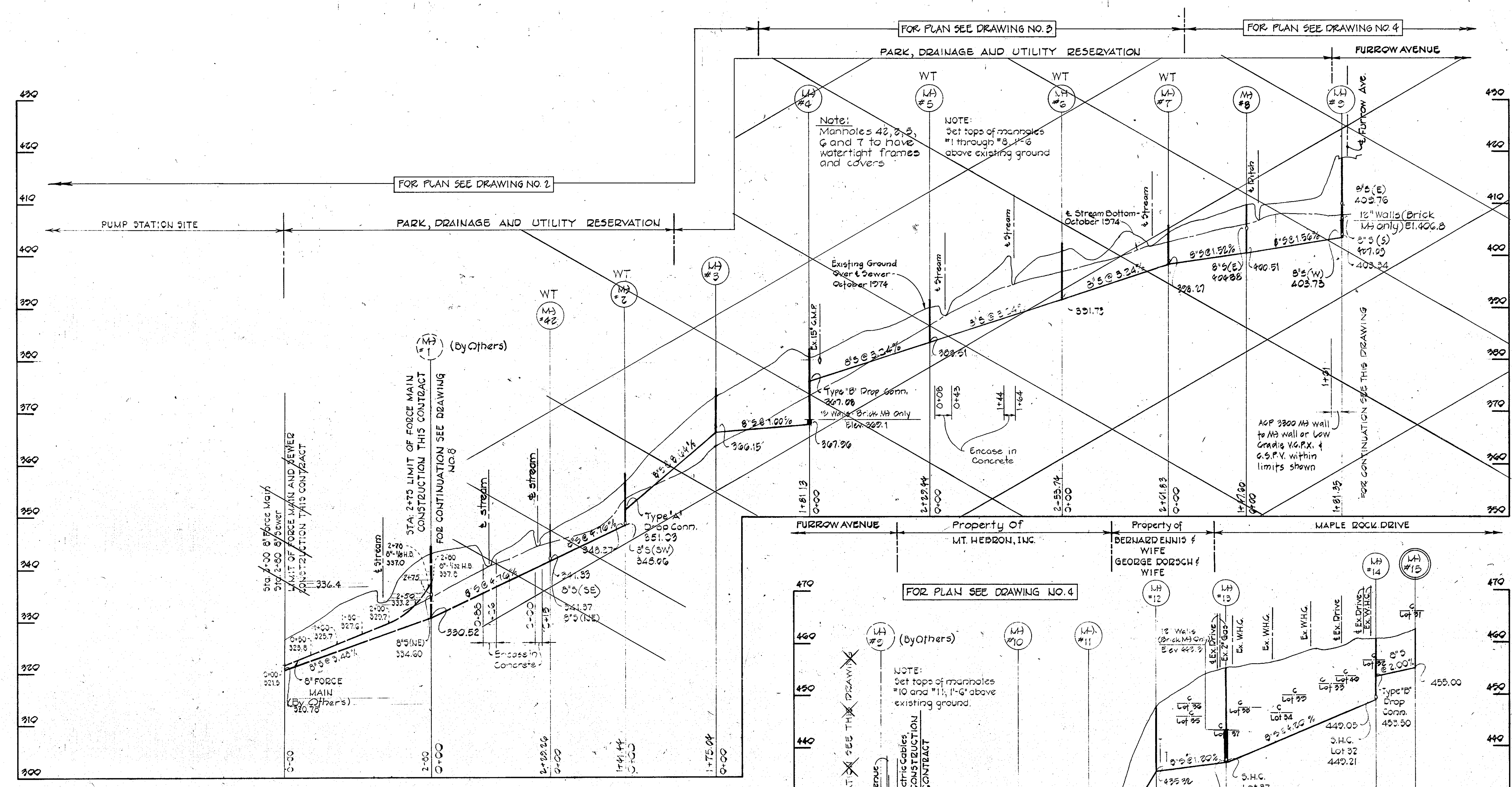
DEPARTMENT OF PUBLIC WORKS
HOWARD COUNTY, MARYLAND
8-29-77
DATE: 8-29-77
DATE: 8-29-77
DATE: 8-29-77
DATE: 8-29-77

CONTRACT NO. 744-S-A
CAPITAL PROJECT NO. S-4-6037

PROFILES OF SEWER AND FORCE MAINS

MOUNT HEBRON SEWER MAINS
ELECTION DISTRICT NO. 2
HOWARD COUNTY, MARYLAND

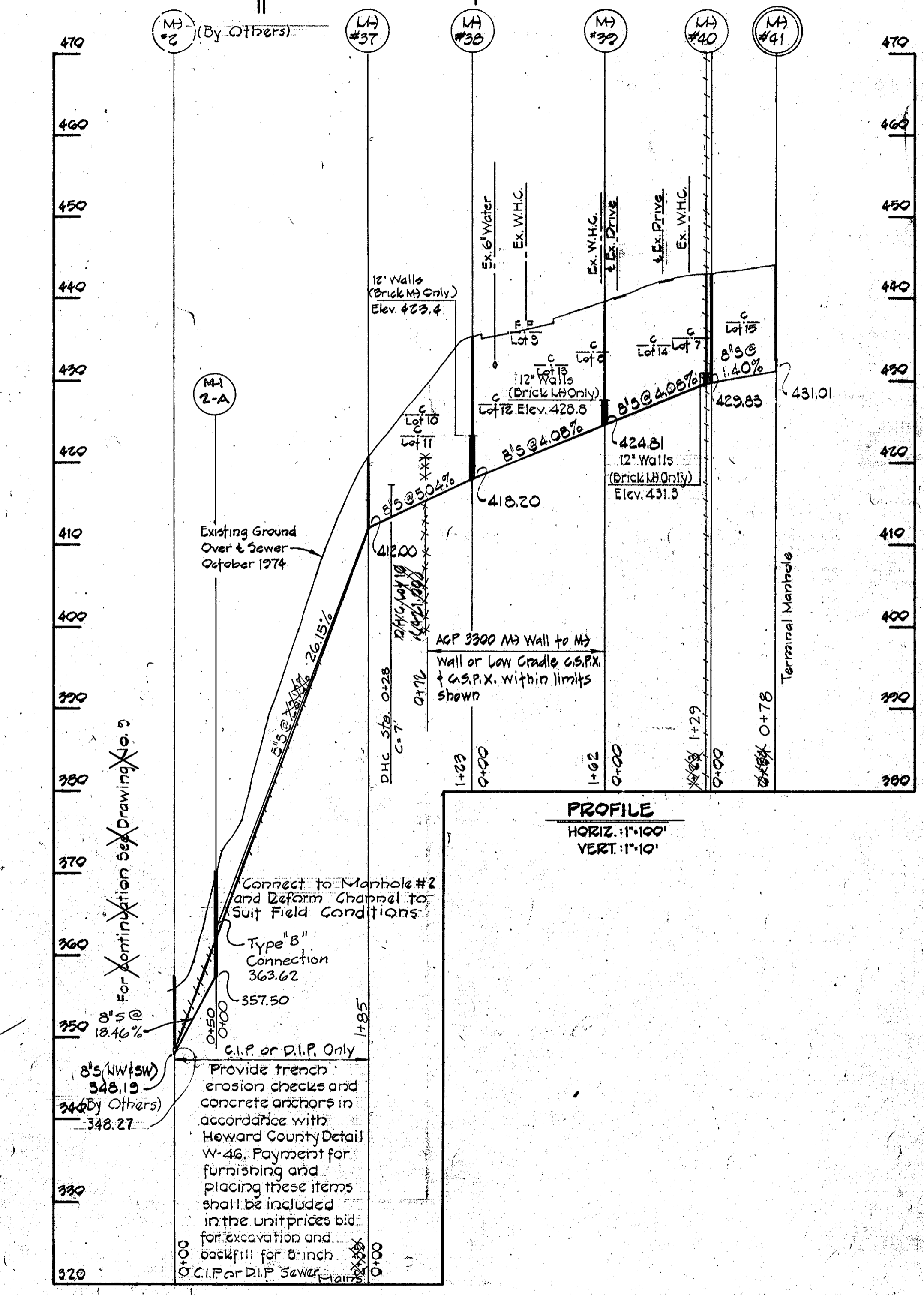
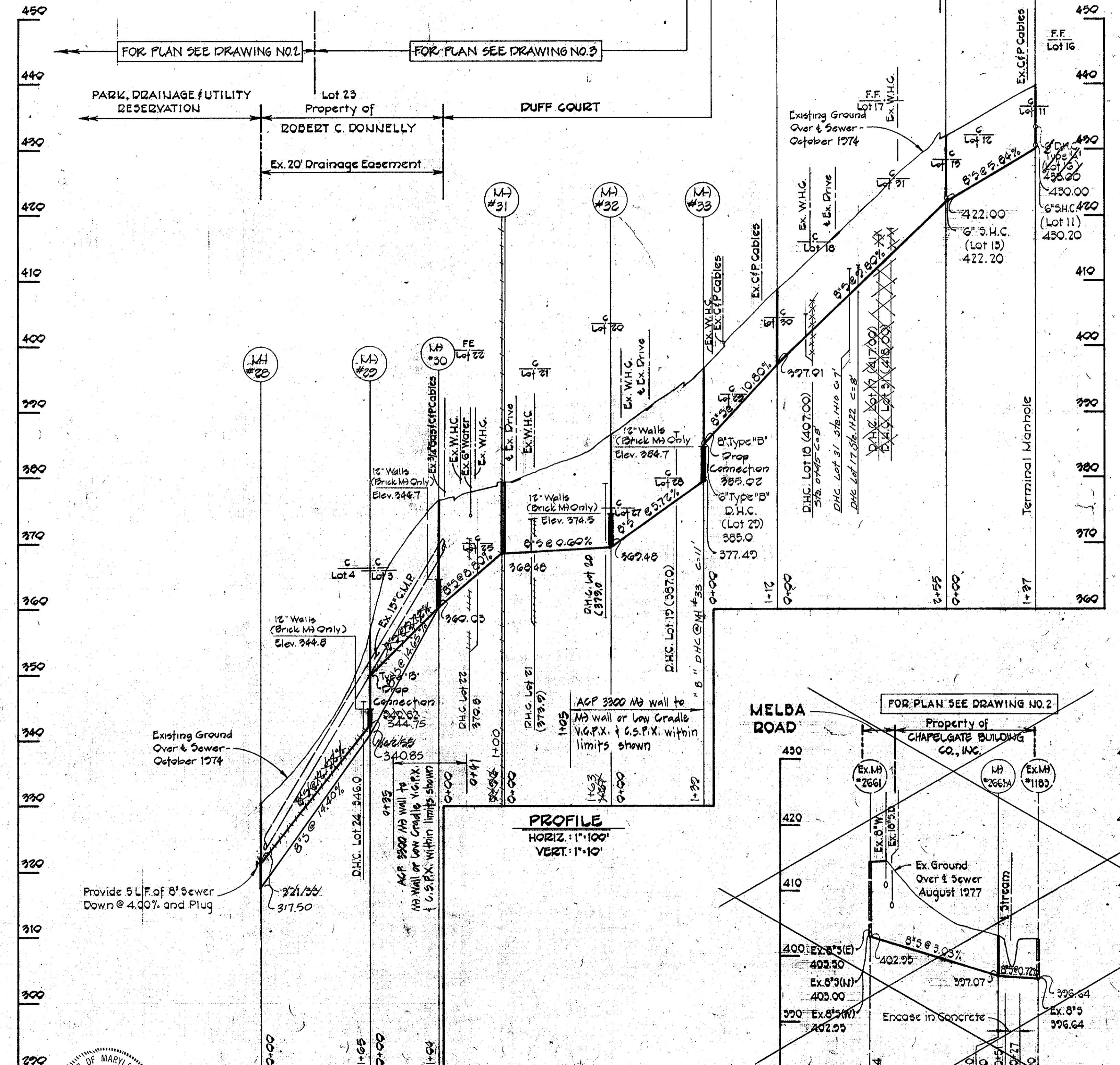
DRAWING NO. 6 OF 8
SCALE: As Shown
DATE: Nov. 7, 1979



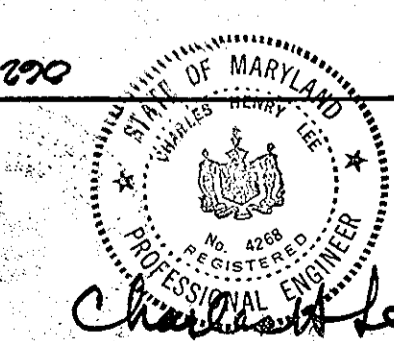
PROFILES
HORIZ: 1"=100'
VERT: 1"=10'

CIP For D.I.R. Only
Provide trench erosion checks and concrete anchors in accordance with Howard County Detail #46. Payment for furnishing and placing these items shall be included in the unit price bid for excavation and backfilling for 8-inch C.I.P. or D.I.P. Sewer Main.

CONTRACT NO. 744-S-A
MOUNT HEBRON SEWER MAIN EXTENSION
HOWARD COUNTY CAPITAL PROJECT S-4-6037



WS 744-S-A/7



PURDUM & JESCHKE
ENGINEERS
1023 N. CALVERT ST.
BALTIMORE, MARYLAND

DEPARTMENT OF PUBLIC WORKS
HOWARD COUNTY, MARYLAND
8-30-77
DIRECTOR OF PUBLIC WORKS

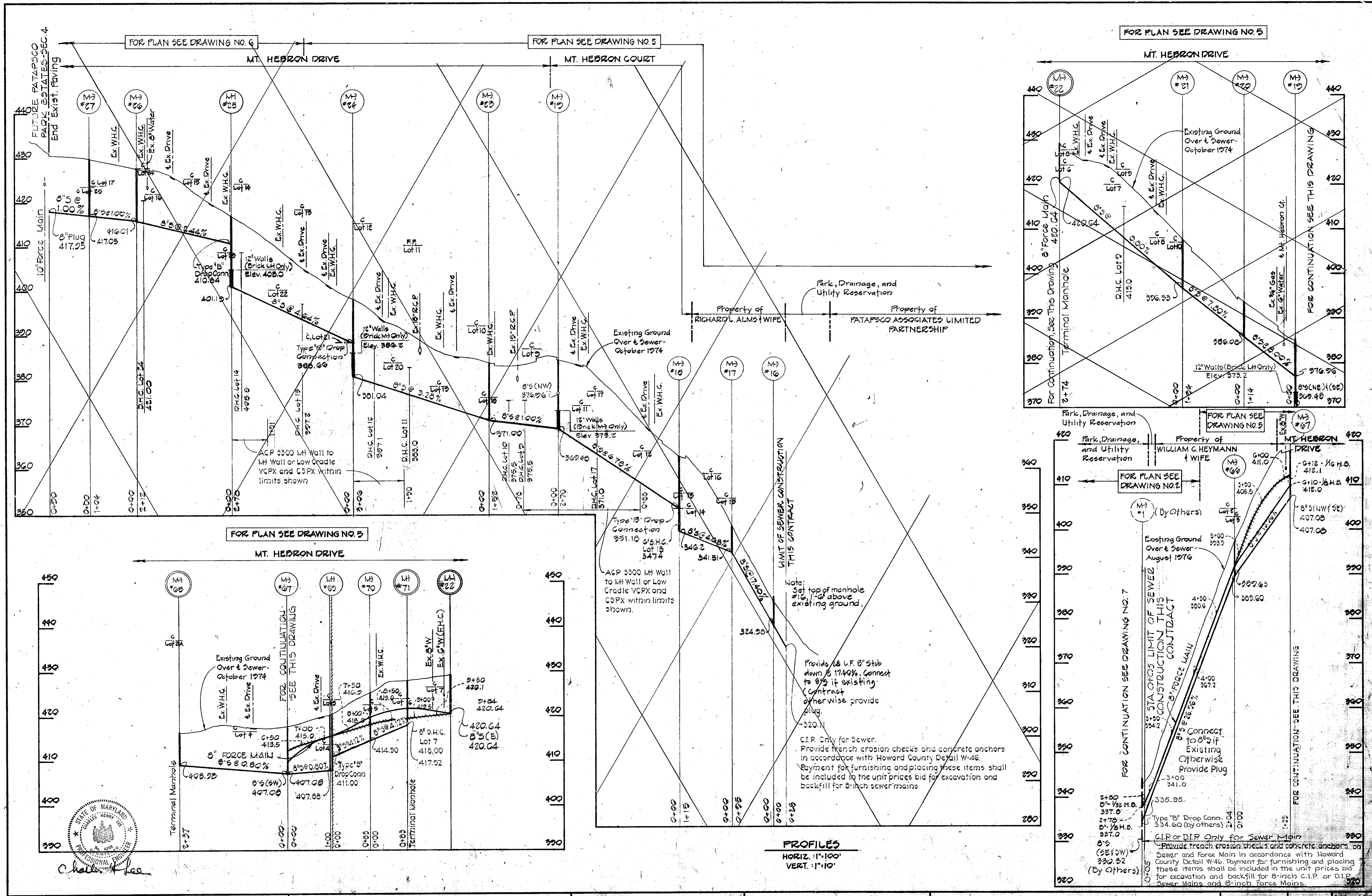
CONTRACT NO. 744-S-A
CAPITAL PROJECT NO. S-4-6037

PROFILES OF SEWER MAINS

MOUNT HEBRON SEWER MAINS
ELECTION DISTRICT NO. 2
HOWARD COUNTY, MARYLAND

DRAWING NO. 7 OF 8
SCALE As Shown

WS 744-S-A/8



PURDUM & JESCHKE
 ENGINEERS
 1023 N. CALVERT ST.
 BALTIMORE, MARYLAND

DEPARTMENT OF PUBLIC WORKS
 HOWARD COUNTY, MARYLAND
 8-29-77
 DIRECTOR OF PUBLIC WORKS DATE CHIEF-BUREAU OF ENGINEERING DATE

CONTRACT NO. 744-S-A
CAPITAL PROJECT NO. S-4-5037

PROFILES OF SEWER AND FORCE MAINS

MOUNT HEBRON SEWER MAINS
 ELECTION DISTRICT NO. 2
 HOWARD COUNTY, MARYLAND

DRAWING NO. 8 OF 8
SCALE As Shown
 DATE NOV. 7, 1979