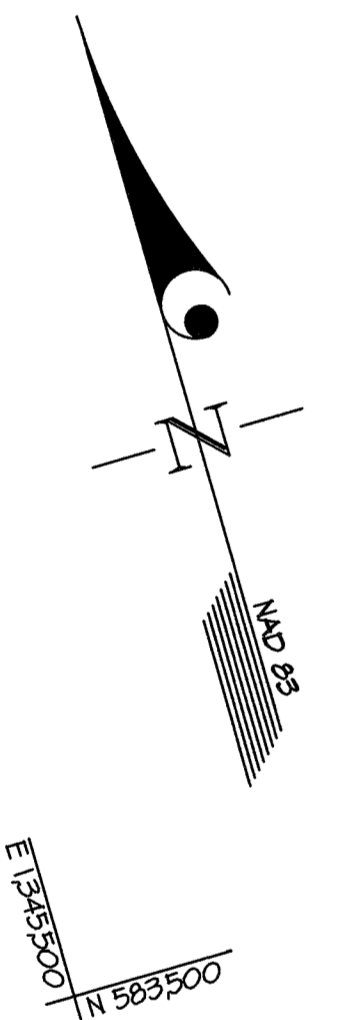


LEGEND	
	PROPERTY LINE
	PROPOSED CURB
	SEWER MAIN
	FIRE HYDRANT
	WATER MAIN
	EX. SEWER
	EX. FIRE HYDRANT
	EX. WATER MAIN
	LIMITS OF THIS PHASE



GRAPHIC SCALE
SCALE: 1"=80'

L:\CAD\DRAWINGS\13013\PLANS BY GLW\5\FINALS\PHASE 4\PHASE 4C\13013-PH4C-FINALS-MS-HKEY MAP.dwg

DEPARTMENT OF
PUBLIC WORKS
HOWARD COUNTY, MARYLAND
[Signature]
CHIEF, BUREAU OF UTILITIES

DEPARTMENT OF
PLANNING AND ZONING
HOWARD COUNTY, MARYLAND
[Signature]
CHIEF, DEVELOPMENT ENGINEERING DIVISION

GLW
PLANNING | ENGINEERING | SURVEYING
3909 NATIONAL DRIVE | SUITE 250 | BURTONSVILLE, MD 20866 | GLWPA.COM
PHONE: 301-421-4024 | BALT: 410-880-1820 | DC&VA: 301-989-2624 | FAX: 301-421-4186

DESIGNED BY
HKJ
DRAWN BY
HKJ
CHECKED BY
DEV

DATE
OCT.,
2021

G.L.W. No.
13013

PROFESSIONAL CERTIFICATION
I HEREBY CERTIFY THAT THESE PLANS
WERE PREPARED OR APPROVED BY ME
AND THAT I AM A DULY LICENSED
PROFESSIONAL ENGINEER UNDER THE
LAWS OF THE STATE OF MARYLAND,
LICENSE NO. 12975
EXP. DATE: MAY 26, 2022
[Signature]
10/15/21

BY	NO	REVISION	DATE

PHASING KEY MAP
600' SCALE MAP NO. 23 BLOCK NO. 6 & 12

WESTMOUNT
CONTRACT No. 24-5177-D
PHASE 4C
LOTS 308-314, 327-345 & 375-378, OPEN SPACE
LOTS 400 & 405-407
HOWARD COUNTY, MARYLAND
ELECTION DISTRICT No. 2

SCALE
1"=80'
SHEET
2 OF 6

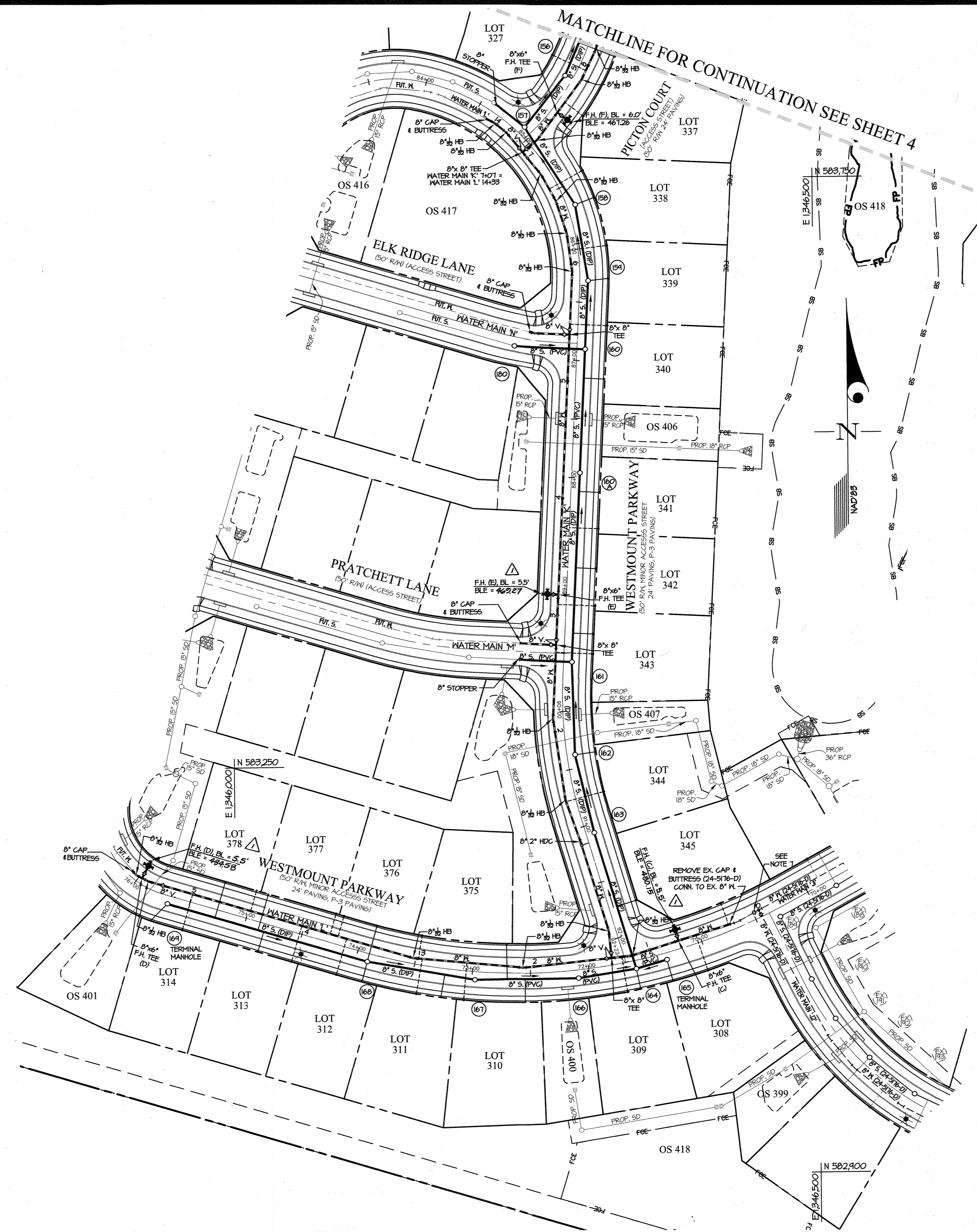
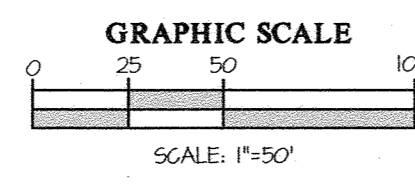
FIRE HYDRANT TEE INFORMATION	
FHT	LOCATION
(C)	N 503,091 E 1346,380
(D)	N 503,345 E 1345,920
(E)	N 503,345 E 1346,214
(F)	N 503,801 E 1346,241

SEWER MANHOLE INFORMATION	
MH	LOCATION
156	N 503,834 E 1346,284
157	N 503,745 E 1346,254
158	N 503,728 E 1346,247
159	N 503,663 E 1346,307
160A	N 503,491 E 1346,244
160	N 503,605 E 1346,304
161	N 503,338 E 1346,240
162	N 503,251 E 1346,242
163	N 503,912 E 1346,308
164	N 503,075 E 1346,343
165	N 503,083 E 1346,310
166	N 503,068 E 1346,244
167	N 503,061 E 1346,205
168	N 503,083 E 1346,113
169	N 503,135 E 1345,942
180	N 503,608 E 1346,244

FITTING CHART			
STATION	FITTING	WATER MAIN 'K'	LOCATION
0+00	8" x 8" TEE	N 503,085	E 1346,322
0+23	8" 1/2" HB	N 503,108	E 1346,320
1+03	8" 2" HDC	N 503,184	E 1346,241
1+41	8" 1/2" HB	N 503,220	E 1346,284
2+11	8" 1/2" HB	N 503,284	E 1346,214
2+75	8" x 8" TEE	N 503,353	E 1346,271
3+18	8" x 6" FHT (E)	N 503,345	E 1346,214
4+38	8" 1" HDC (VERT.)	SEE SHEET 5	
5+40	8" x 8" TEE	N 503,611	E 1346,241
5+44	8" 1/2" HB	N 503,611	E 1346,244
6+27	8" 1/2" HB	N 503,704	E 1346,284
6+56	8" 1/2" HB	N 503,732	E 1346,280
6+82	8" 1/2" HB	N 503,755	E 1346,267
7+07	8" x 8" TEE	N 503,713	E 1346,252
7+23	8" 1/2" HB	N 503,784	E 1346,265
7+52	8" x 6" FHT (F)	N 503,807	E 1346,282
7+60	8" 2" HDC (VERT.)	SEE SHEET 5	
7+87	8" 1/2" HB	N 503,835	E 1346,303
8+16	8" 1/2" HB	N 503,861	E 1346,316
WATER MAIN 'L'			
0+74	8" x 6" FHT (C)	N 503,091	E 1346,380
1+71	8" 1/2" HB	N 503,086	E 1346,394
1+33	8" x 8" TEE	N 503,085	E 1346,322
2+10	8" 1/2" HB	N 503,071	E 1346,246
3+04	8" 1/2" HB	N 503,086	E 1346,152
4+11	8" 1" HDC (VERT.)	SEE SHEET 6	
4+31	8" 1" HDC (VERT.)	SEE SHEET 6	
5+41	8" 1/2" HB	N 503,154	E 1346,425
5+47	8" x 6" FHT (D)	N 503,157	E 1345,920
5+53	8" 1/2" HB	N 503,160	E 1345,915
5+58	8" CAP & BUTTRESS	N 503,164	E 1345,912
13+40	8" CAP & BUTTRESS	N 503,802	E 1346,221
13+48	8" 1/2" HB	N 503,748	E 1346,224
14+11	8" 1/2" HB	N 503,740	E 1346,238
WATER MAIN 'M'			
0+31	8" CAP & BUTTRESS	N 503,284	E 1346,246
WATER MAIN 'N'			
0+30	8" 1/2" HB	N 503,614	E 1346,262
0+34	8" CAP & BUTTRESS	N 503,620	E 1346,257

3+03 8" 1.5" HDC (VERT.) SEE SHEET 5

- NOTES:
- ALL SHC'S SHOWN SERVING NUMBERED LOTS ARE 4".
 - ALL SEWER MAINS WILL BE 8" PVC (SDR 35) OR DIP (CLASS 54). SEE PROFILE SHEET 5 FOR THE LIMITS OF EACH.
 - ALL MANHOLES WILL BE STANDARD 4'-0" (6 5/12).
 - OUTSIDE METERS WILL BE PER HOWARD CO. DETAIL W 3.28.
 - ALL MHC'S SERVING NUMBERED LOTS ARE 1 1/2" WITH A 1" METER OUTSIDE SETTING. ALL MHC'S SHOWN ARE PROPOSED UNLESS OTHERWISE NOTED.
 - WATER MAIN IS 8" C900 PVC (DR-18) UNLESS OTHERWISE NOTED.
 - EXISTING VALVE TO BE CLOSED BY DPW FOR CONSTRUCTION.
 - FOR SEWER HOUSE CONNECTION INVERT ELEVATIONS FROM THE MAIN TO THE FUTURE DWELLINGS (M.C.E.), SEE SHEET 6.
 - ALL STORM DRAIN TO BE HDPE UNLESS NOTED OTHERWISE.
 - ALL FIRE HYDRANTS TO BE INSTALLED PER HOCO DETAIL W-111. CONTINUITY TEST STATIONS TO BE INSTALLED AT ALL FIRE HYDRANTS PER W-115.



NOTE: CONTRACTS 20-5167-D (WESTMOUNT - PHASE 3B) AND 24-5176-D (WESTMOUNT - PHASE 4B) MUST BE PLACED IN-SERVICE TO ALLOW THIS CONTRACT TO BE PLACED IN-SERVICE

L: CAD DRAWINGS 13013 PLANS BY: GLW W/ FINALS PHASE 4 PHASE 4C 1/2021 PH4C-FINALS-MS-PLANS.dwg

DEPARTMENT OF PUBLIC WORKS HOWARD COUNTY, MARYLAND CHIEF, BUREAU OF UTILITIES	DEPARTMENT OF PLANNING AND ZONING HOWARD COUNTY, MARYLAND CHIEF, DEVELOPMENT ENGINEERING DIVISION	 PLANNING ENGINEERING SURVEYING 3909 NATIONAL DRIVE SUITE 250 BURTONSVILLE, MD 20866 GLWPA.COM PHONE: 301-421-4024 BALT: 410-880-1820 DCVA: 301-989-2524 FAX: 301-421-4188	DESIGNED BY: WJ	DATE: OCT., 2021	PROFESSIONAL CERTIFICATION I HEREBY CERTIFY THAT THESE PLANS WERE PREPARED OR APPROVED BY ME AND THAT I AM A DULY LICENSED PROFESSIONAL ENGINEER UNDER THE LAWS OF THE STATE OF MARYLAND, LICENSE NO. 12975 EXP. DATE: MAY 26, 2022 	CHECKED BY: DEV	G.L.W. No. 13013	DATE: 10/15/21	REVISION: <table border="1"> <tr> <th>NO</th> <th>REVISION</th> <th>DATE</th> </tr> <tr> <td>1</td> <td>REVISED WATER/SEWER PER GRADING CHANGES</td> <td>02-24-23</td> </tr> </table>	NO	REVISION	DATE	1	REVISED WATER/SEWER PER GRADING CHANGES	02-24-23	SCALE AS SHOWN SHEET 3 OF 6
			NO	REVISION		DATE										
1	REVISED WATER/SEWER PER GRADING CHANGES	02-24-23														
DEPARTMENT OF PUBLIC WORKS HOWARD COUNTY, MARYLAND CHIEF, BUREAU OF UTILITIES		DEPARTMENT OF PLANNING AND ZONING HOWARD COUNTY, MARYLAND CHIEF, DEVELOPMENT ENGINEERING DIVISION		WESTMOUNT CONTRACT No. 24-5177-D PHASE 4C LOTS 308-314, 327-345 & 375-378, OPEN SPACE LOTS 400 & 405-407 HOWARD COUNTY, MARYLAND ELECTION DISTRICT No. 2		WATER and SEWER PLANS 600' SCALE MAP NO. 23 BLOCK NO. 6 & 12										

