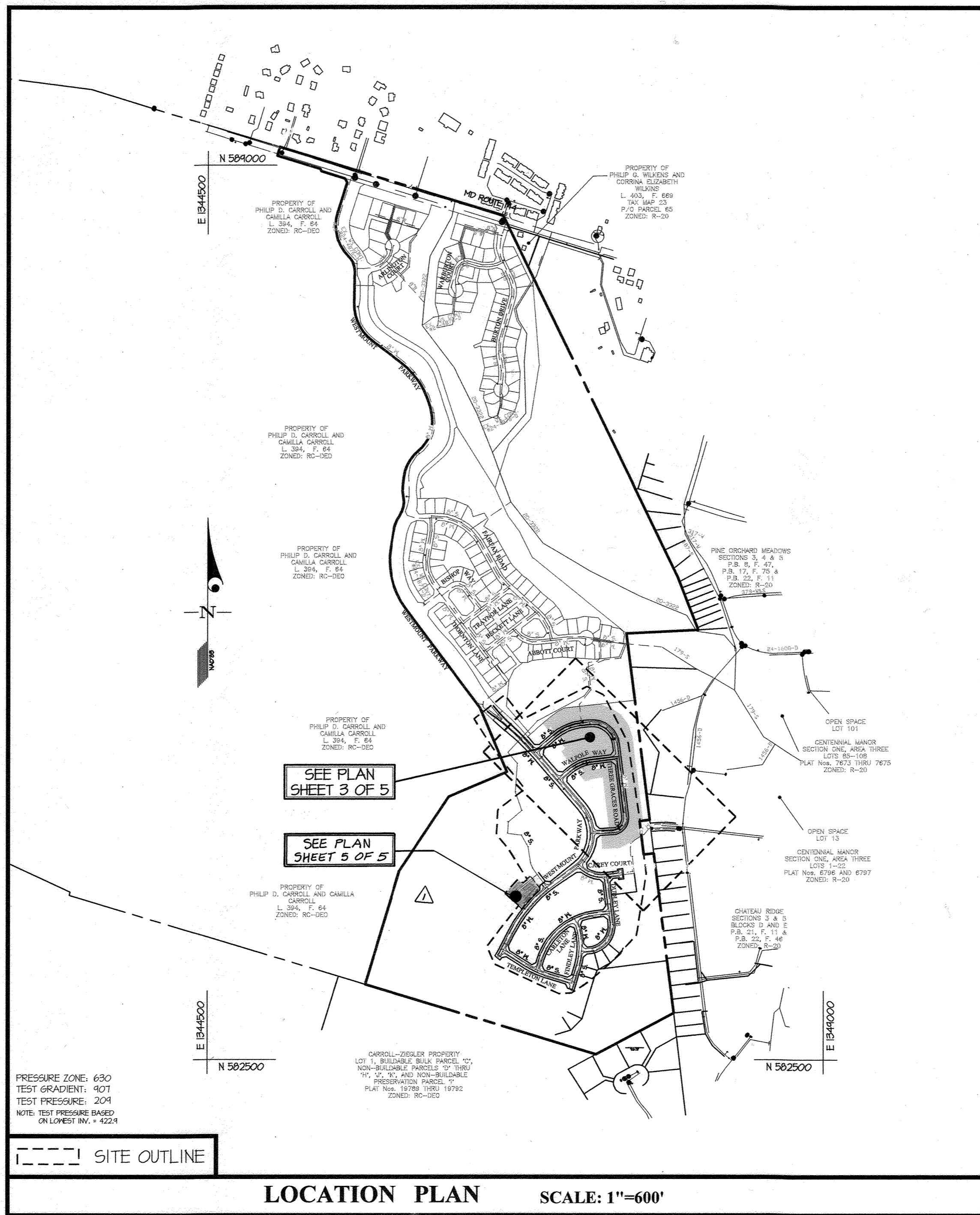
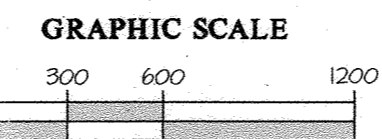


QUANTITIES				
ITEMS	QUANTITIES ESTIMATED	AS-BUILT		
		QUANTITIES	TYPE	MANUFACTURER/SUPPLIER
6" DIP WATER MAIN (CL 54 DIP)	71 L.F.			
8" PVC WATER MAIN (C-900 DR-18)	514 L.F.			
8" DIP WATER MAIN (CL 54 DIP)	0 L.F.			
1-1/2" MHG	736 L.F.			
1" METER VAULT	34 EA.			
8"x8" TEE	0 EA.			
8"x6" FHT	5 EA.			
FIRE HYDRANTS	5 EA.			
8" 1/32 BEND	5 EA.			
8" PVC SEWER MAIN (SDR 35 PVC)	1343 L.F.			
4" MANHOLES	18 EA.			
4" SHG	961 L.F.			
4" CLEANOUT	36 EA.			
8" DIP SEWER MAIN (CL 54 DIP)	102 L.F.			
NAME OF UTILITY CONTRACTOR:				

SURVEY AND DRAFTING DIV. CHECKBOX: AS-BUILT DATE:

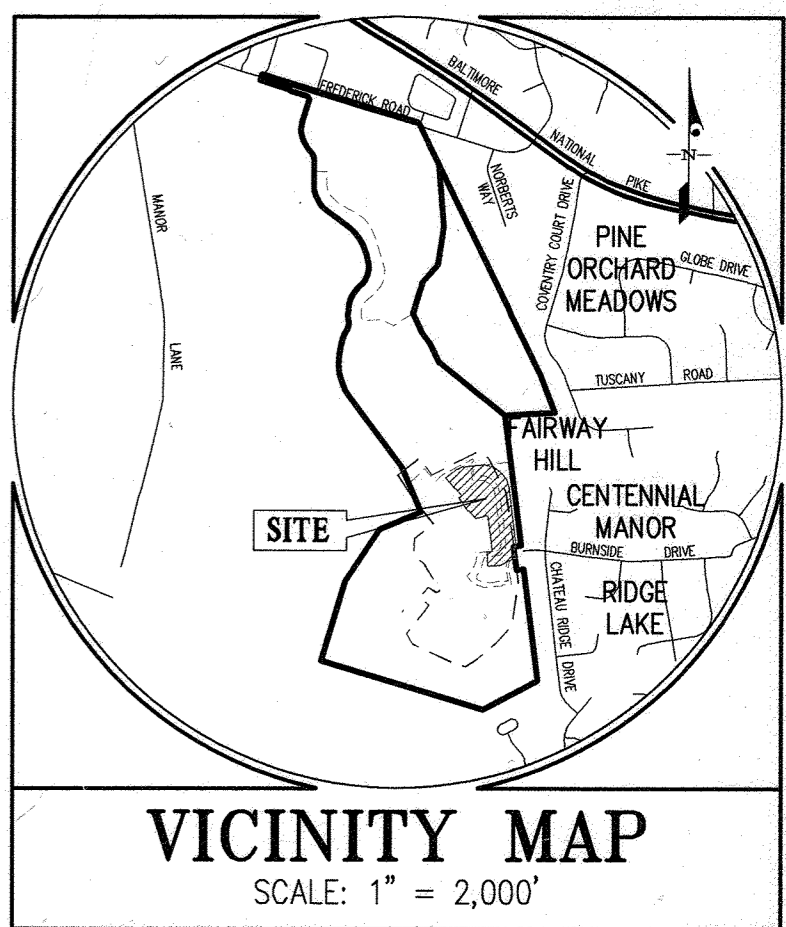


LOCATION PLAN SCALE: 1"=600'



CONTRACT No. 24-5170-D
WESTMOUNT
 PHASE 3E
 LOTS 176-195, 221-227 & 230-236 AND
 OPEN SPACE LOTS 267, 270-272, 285, 287 & 288
HOWARD COUNTY, MARYLAND
DEPARTMENT OF PUBLIC WORKS

TYPE OF BUILDING	RESIDENTIAL
NUMBER OF UNITS	34
NUMBER OF S.H.C.'s	36
NUMBER OF W.H.C.'s	34 SINGLE
AREA OF COMMERCIAL LOT/PARCEL	0.0 AC.
SEWER WATERSHED	MIDDLE PATUXENT
PUMPING STATION	N/A

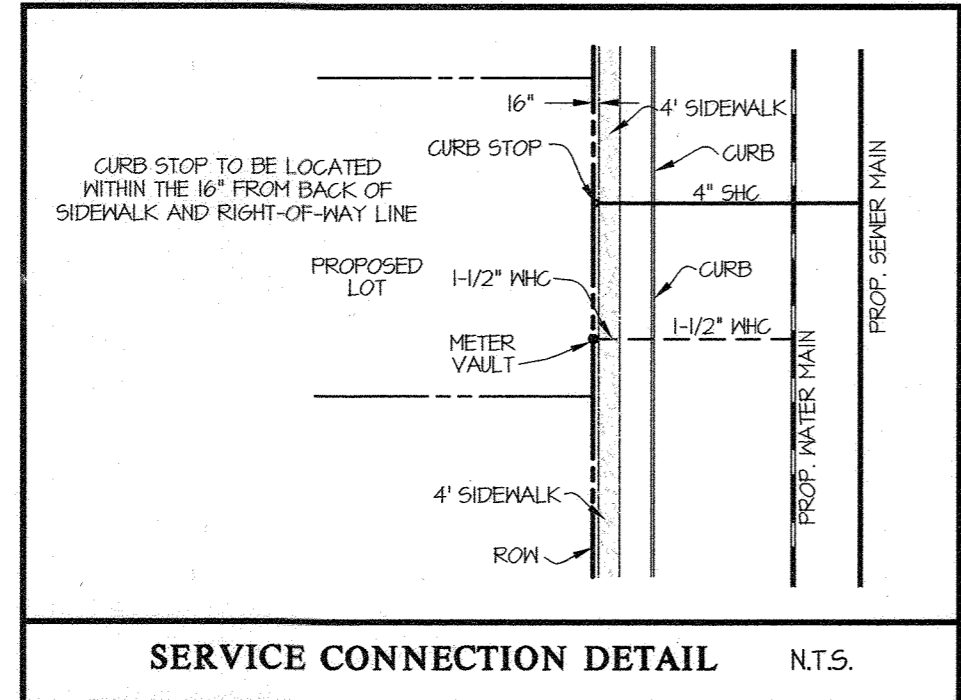
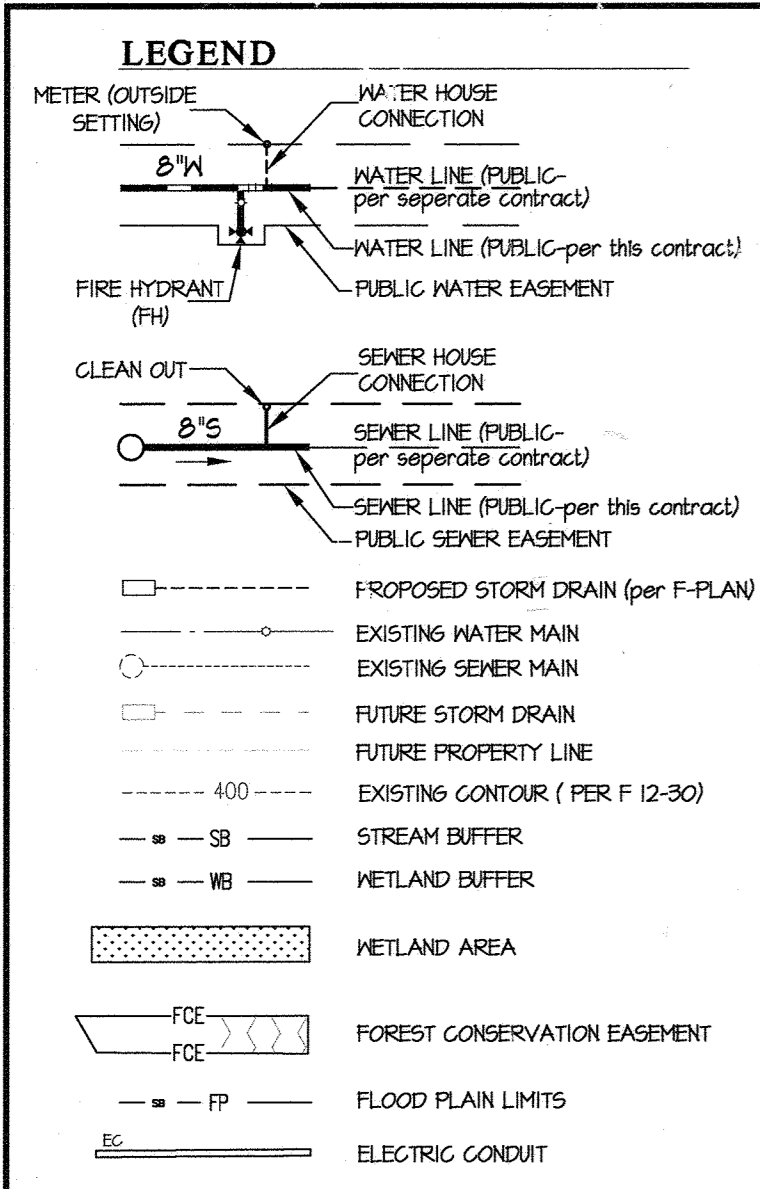


BENCHMARKS
 16HC: NORTHING: 584780.905 EASTING: 134153.147
 16HD: NORTHING: 590674.171 EASTING: 134010.586
ADC MAP COORDINATES: MAP 4814 GRID J5 THRU J6 GRID K5 THRU K6

GENERAL NOTES

- Part I**
- Approximate locations of existing mains are shown. The contractor shall take all necessary precautions to protect existing mains and services and maintain uninterrupted service. Any damage incurred shall be repaired immediately to the satisfaction of the Engineer at the contractor's expense.
 - Topographic field surveys were performed on March, 1997 by SDI and then updated by grade checks performed by Gutschick, Little & Heber, PA and based on F 13-008. The boundary information is based upon a field survey prepared by Gutschick, Little & Heber, PA on or about June, 2001.
 - Horizontal and Vertical Survey Controls. The coordinates shown on the drawings are based on Maryland State Reference System NAD '83/91 as projected by Howard County Geodetic Control Stations No. 46BC and No. 41EA. All vertical controls are based on NAVD '88. Vertical controls provided on the drawings are standard discs on concrete monuments. All pipe elevations shown are invert elevations unless otherwise noted on the plans.
 - Clear all utilities by a minimum of 12 inches. Clear all poles by 5'-0" minimum or bracket as required unless otherwise noted. The owner has contacted the utility companies and has made arrangements for tracing of poles as shown on the drawings. In the event the contractor's work requires the tracing of additional poles, any cost incurred by the owner for the tracing of additional poles or damages shall be deducted from monies owed the contractor. The contractor shall coordinate with the utility companies to schedule the tracing of the poles.
 - For details not shown on the drawing, and for materials and construction methods, use Howard County Design Manual, Volume IV, Standard Specifications and Details for Construction (Latest Edition). The contractor shall have a copy of Volume IV on the job.
 - Where test pits have been made on existing utilities, they are noted by the symbol Φ at the locations of the test pits. A note or notes containing the results of the test pit or pits is included on the drawings. Existing utilities in the vicinity of the proposed work for which test pits have not been dug shall be located by the contractor two weeks in advance of construction operations at his own expense.
 - The contractor shall notify the following utility companies or agencies at least five working days before starting work shown on these plans:
 AT&T.....1-800-252-1133
 BGE (Construction Services).....410-631-8713
 BGE (Emergency).....410-685-0123
 Bureau of Highways.....410-313-1450
 Colonial Pipeline Co.....410-445-1340
 Miss Utility.....1-800-257-1111
 State Highway Administration.....410-531-5533
 Verizon.....1-800-743-0033
 - Trees and shrubs are to be protected from damage to the maximum extent. Trees and shrubs located within the construction strip are not to be removed or damaged by the contractor.
 - The contractor shall remove trees, stumps and roots along the line of excavation. Payment for such removal shall be included in the unit price bid for construction of the man.
 - The contractor shall notify the Bureau of Highways, Howard County, at (410)-313-1450 at least five working days before open cutting or boring/jacking of any County road for laying water/sewer mains or house connections. The approval of these drawings will constitute compliance with DPW requirements per Section 18.114(a) of the Howard County Code.
- Part II WATER**
- All water mains shall be D.I.P. Class 54 unless otherwise noted.
 - Tops of all water mains shall have a minimum of 3'-6" of cover unless otherwise noted.
 - Valves adjacent to tees shall be strapped to tees.
 - All fittings shall be buttressed or anchored with concrete in accordance with Standard Details unless otherwise provided for on the drawings.
 - Fire hydrants shall be set to the bury line elevations shown on the drawings. All fire hydrants shall be installed in accordance with Standard Details. The soil around the fire hydrant shall be compacted in accordance with Section 1000 and Section 1005 of the Standard Specifications.
 - The contractor shall not operate any water main valves on the existing water system.
 - Tracer wires and continuity test stations shall be installed on all DIP and PVC water mains in accordance with the Howard County Design Manual.
 - For PVC water mains, all records for the Quality Control and Qualification Test Requirements noted in Section 51 of the ANWA Standard C400 for PVC pressure pipe shall be submitted with the pipe material certifications or shop drawings prior to approval of the material for use. The test records shall be for the pipe to be installed under this contract. All PVC pipe shall contain markings to allow cross referencing of the pipe supplied to the test records received.
 - Unless otherwise noted on the plans or in the specifications sacrificial anodes shall be installed on all valves and metallic fittings used with PVC water mains in accordance with Volume IV, Standard Specifications and Details for Construction, Seventeen (17) pound Magnesium anodes shall be installed on all valves and ductile iron fittings including restrainers and harnesses. Twelve (12) pound zinc anodes shall be installed on all stainless steel fittings and saddles used with PVC mains. All 'tees' used with PVC mains shall be ductile iron.
 - Proper Assembly of Gasketed PVC Pipe Joints: The manufacturer's insertion line of gasketed PVC pipe joints indicates the maximum depth of insertion of the spigot into the bell. After assembly of the joint, the insertion line shall remain visible. Dual insertion lines on gasketed PVC pipe indicate the maximum and minimum depth of insertion of the spigot into the bell. The contractor shall not over insert or over home the spigot into the bell of PVC pipe.
 - All changes in horizontal or vertical direction of PVC water pipe shall be made with standard bends. 5-degree sweeps or high deflection (HD) couplings. No bending of the pipe or deflecting of PVC pipe joints is permitted. Where high deflection couplings or 5-degree sweeps are permitted, the contractor shall provide one full pipe length (20-foot long) on either side of the high deflection coupling or 5-degree sweep. The contractor shall use a vibratory plate compactor or other approved means to thoroughly compact the #51 stone on both sides of the high deflection coupling or 5-degree sweep, taking care not to use compaction equipment directly over the fitting.
 PVC high deflection couplings shall be limited to a total deflection of 3-degrees (1 1/2-degree on either end of the coupling), shall be rated for a minimum 200 psi meeting the requirements of ANWA C400, shall have a minimum length of 4 inches and shall have center stops. PVC High deflection couplings shall be CertainTeed PVC High Deflection (HD) Stop Couplings or equal. Five degree sweeps shall be bell by spigot, rated for a minimum 225 psi, DR18 meeting the requirements of ANWA C400 and shall be Multi Fittings (plex) Blue Brute DR18 or equal.
 - When PVC high deflection couplings or PVC 5-degree sweeps are used to facilitate changes in horizontal or vertical alignments of ANWA C-900 PVC pipelines, the contractor shall install devices for the prevention of over-insertion of the PVC pipe spigots or plain ends into the push on bell joint on both sides of the high deflection couplings and 5 degree sweeps. Bell stops shall be placed at the proper insertion line for the fitting. The bell stop shall be manufactured of ductile iron and incorporate an expansion retention spring to allow for pipe expansion and contraction. The bell stops shall be Series 5000 Mega-Stop, as manufactured by EBAA Iron, Inc., or approved equal.
 - Per the Fire Sprinkler Code all residential single family dwellings will have a minimum 1-1/2" MHG with 1" meter, outside setting.
- Part III SEWER**
- All sewer mains shall be D.I.P. or P.V.C. unless otherwise noted.
 - All manholes shall be 4'-0" inside diameter unless otherwise noted.
 - Force mains shall be D.I.P. only.
 - Manholes shown with 12" and 16" walls are for brick manholes only.
 - Manholes designated N.T. in plan and profile shall have watertight frame and cover, Standard Detail 65.52. Where watertight manhole frames and covers are used, set top of frame 1'-6" above finished grade unless otherwise noted on the drawings.
 - House(s) with the symbol 'C.N.S.' indicates that the cellar cannot be served.

NOTE: CONTRACT 24-4878-D (WESTMOUNT - PHASE 3A) AND 24-4877-D (WESTMOUNT - PHASE 2) MUST BE PLACED IN-SERVICE TO ALLOW THIS CONTRACT TO BE PLACED IN-SERVICE



SHEET INDEX

- COVER SHEET
- PHASING KEY MAP
- WATER AND SEWER PLAN (1"=50')
- WATER AND SEWER PROFILES
- MINIMUM CELLAR ELEVATIONS AND AS-BUILT INFORMATION

SEDIMENT CONTROL MEASURES WILL BE IMPLEMENTED IN ACCORDANCE WITH F-17-001, SECTION 308 OF THE SPECIFICATIONS AT FINAL ROAD PLAN STAGE.

REVIEWED FOR HOWARD SOIL CONSERVATION DISTRICT AND MEETS TECHNICAL REQUIREMENT

SIGNATURE: _____ DATE: _____
 U.S.D.A. NATURAL RESOURCES CONSERVATION SERVICE

THIS DEVELOPMENT PLAN IS APPROVED FOR SOIL EROSION AND SEDIMENT CONTROL BY THE HOWARD SOIL CONSERVATION DISTRICT.

APPROVED:
Alexander Bratovich 03/01/2021
 HOWARD S.C.D. DATE

OWNER/DEVELOPER
 WESTMOUNT DEVELOPMENT CORP.
 307 INTERNATIONAL GIRCLE
 SUITE 130
 HUNT VALLEY, MD 21030
 410-484-4484
 ATTN: ROBERT GOODIER

DEPARTMENT OF PUBLIC WORKS
 HOWARD COUNTY, MARYLAND

[Signature] 2/17/2021
 CHIEF, BUREAU OF UTILITIES DATE

DEPARTMENT OF PLANNING AND ZONING
 HOWARD COUNTY, MARYLAND

[Signature] 3-29-21
 CHIEF, DEVELOPMENT ENGINEERING DIVISION DATE

GLW
 PLANNING | ENGINEERING | SURVEYING

3909 NATIONAL DRIVE | SUITE 250 | BURTONSVILLE, MD 20886 | GLWPA.COM
 PHONE: 301-421-4024 | BALT.: 410-880-1820 | DC&VA: 301-989-2524 | FAX: 301-421-4186

DESIGNED BY: JRD/AWL
 DRAWN BY: AWL
 CHECKED BY: DEV

DATE: FEB. 2021

G.L.W. No. 13013

PROFESSIONAL CERTIFICATION

I HEREBY CERTIFY THAT THESE PLANS WERE PREPARED OR APPROVED BY ME, AND THAT I AM A DULY LICENSED PROFESSIONAL ENGINEER UNDER THE LAWS OF THE STATE OF MARYLAND, LICENSE NO. 12375

EXP. DATE: MAY 26, 2022

2/17/21

BY	NO	REVISION	DATE
		REMOVE PART OF 8'S FROM CONT. # 20-5167-D AND INCLUDE IT IN CONT. # 24-5170-D	04-01-22

COVER SHEET

600' SCALE MAP NO. 23 BLOCK NO. 6 & 12

WESTMOUNT
 CONTRACT No. 24-5170-D
 PHASE 3E

LOTS 176-195, 221-227 & 230-236 AND
 OPEN SPACE LOTS 267, 270-272, 285, 287 & 288

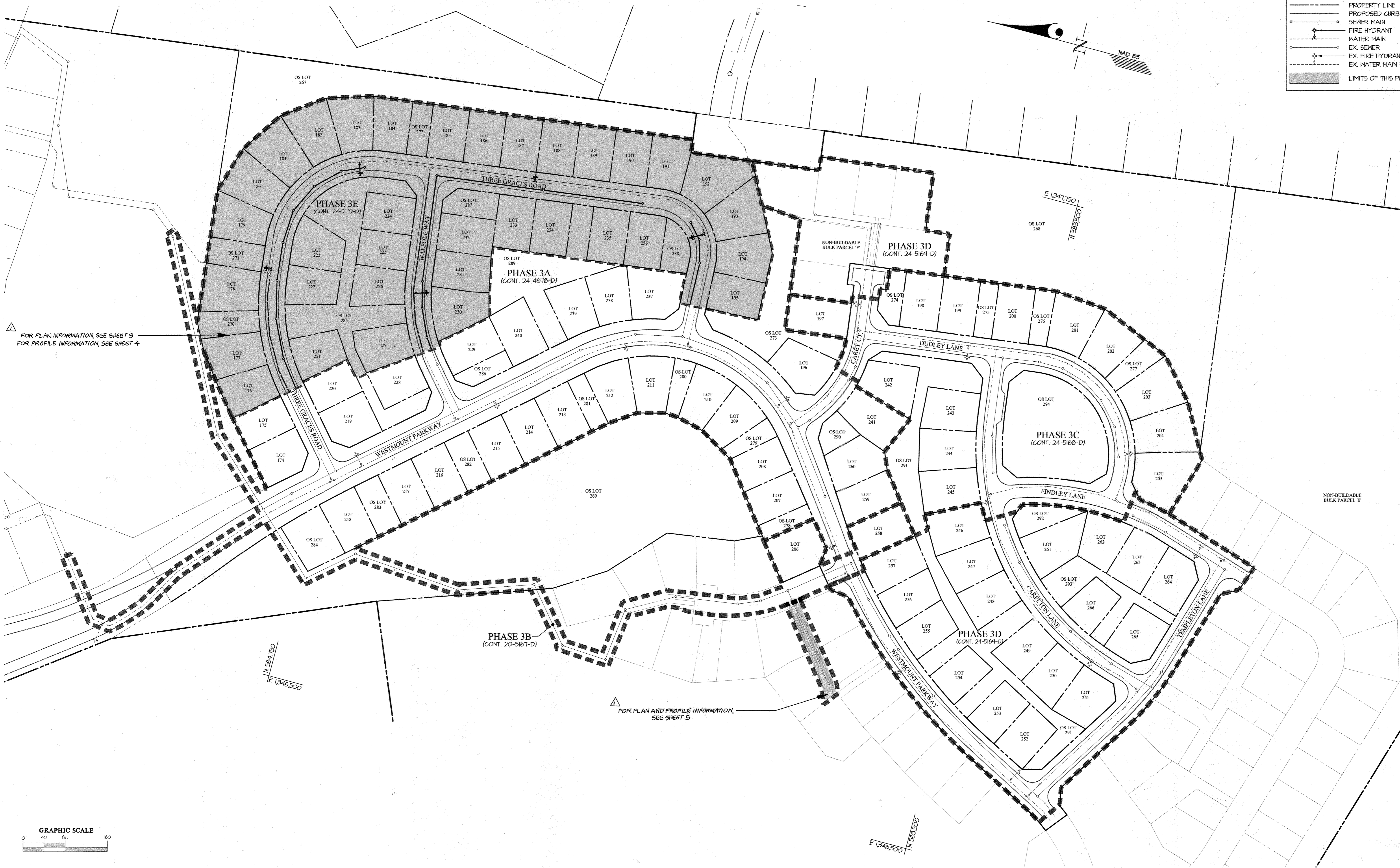
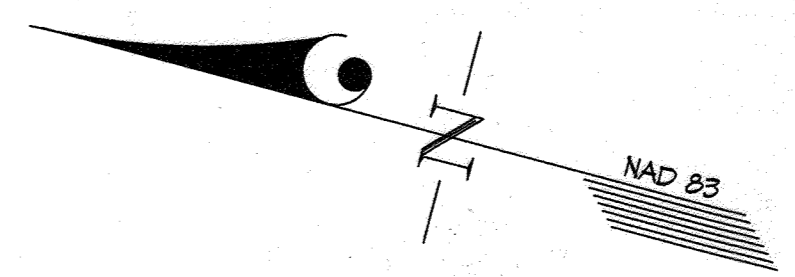
HOWARD COUNTY, MARYLAND
 ELECTION DISTRICT No. 2

SCALE AS SHOWN

SHEET 1 OF 5

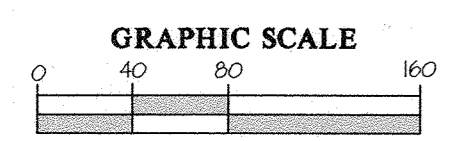
LEGEND

	PROPERTY LINE
	PROPOSED CURB
	SEWER MAIN
	FIRE HYDRANT
	WATER MAIN
	EX. SEWER
	EX. FIRE HYDRANT
	EX. WATER MAIN
	LIMITS OF THIS PHASE



FOR PLAN INFORMATION, SEE SHEET 3
FOR PROFILE INFORMATION, SEE SHEET 4

FOR PLAN AND PROFILE INFORMATION,
SEE SHEET 5



ALL CIVIL ENGINEERING AND SURVEYING PLANS BY GWL W/STAFF OR PHASE 3A PHASE 3B PHASE 3C PHASE 3D PHASE 3E PHASE 3F PHASE 3G PHASE 3H PHASE 3I PHASE 3J PHASE 3K PHASE 3L PHASE 3M PHASE 3N PHASE 3O PHASE 3P PHASE 3Q PHASE 3R PHASE 3S PHASE 3T PHASE 3U PHASE 3V PHASE 3W PHASE 3X PHASE 3Y PHASE 3Z PHASE 3AA PHASE 3AB PHASE 3AC PHASE 3AD PHASE 3AE PHASE 3AF PHASE 3AG PHASE 3AH PHASE 3AI PHASE 3AJ PHASE 3AK PHASE 3AL PHASE 3AM PHASE 3AN PHASE 3AO PHASE 3AP PHASE 3AQ PHASE 3AR PHASE 3AS PHASE 3AT PHASE 3AU PHASE 3AV PHASE 3AW PHASE 3AX PHASE 3AY PHASE 3AZ PHASE 3BA PHASE 3BB PHASE 3BC PHASE 3BD PHASE 3BE PHASE 3BF PHASE 3BG PHASE 3BH PHASE 3BI PHASE 3BJ PHASE 3BK PHASE 3BL PHASE 3BM PHASE 3BN PHASE 3BO PHASE 3BP PHASE 3BQ PHASE 3BR PHASE 3BS PHASE 3BT PHASE 3BU PHASE 3BV PHASE 3BW PHASE 3BX PHASE 3BY PHASE 3BZ PHASE 3CA PHASE 3CB PHASE 3CC PHASE 3CD PHASE 3CE PHASE 3CF PHASE 3CG PHASE 3CH PHASE 3CI PHASE 3CJ PHASE 3CK PHASE 3CL PHASE 3CM PHASE 3CN PHASE 3CO PHASE 3CP PHASE 3CQ PHASE 3CR PHASE 3CS PHASE 3CT PHASE 3CU PHASE 3CV PHASE 3CW PHASE 3CX PHASE 3CY PHASE 3CZ PHASE 3DA PHASE 3DB PHASE 3DC PHASE 3DD PHASE 3DE PHASE 3DF PHASE 3DG PHASE 3DH PHASE 3DI PHASE 3DJ PHASE 3DK PHASE 3DL PHASE 3DM PHASE 3DN PHASE 3DO PHASE 3DP PHASE 3DQ PHASE 3DR PHASE 3DS PHASE 3DT PHASE 3DU PHASE 3DV PHASE 3DW PHASE 3DX PHASE 3DY PHASE 3DZ PHASE 3EA PHASE 3EB PHASE 3EC PHASE 3ED PHASE 3EE PHASE 3EF PHASE 3EG PHASE 3EH PHASE 3EI PHASE 3EJ PHASE 3EK PHASE 3EL PHASE 3EM PHASE 3EN PHASE 3EO PHASE 3EP PHASE 3EQ PHASE 3ER PHASE 3ES PHASE 3ET PHASE 3EU PHASE 3EV PHASE 3EW PHASE 3EX PHASE 3EY PHASE 3EZ PHASE 3FA PHASE 3FB PHASE 3FC PHASE 3FD PHASE 3FE PHASE 3FF PHASE 3FG PHASE 3FH PHASE 3FI PHASE 3FJ PHASE 3FK PHASE 3FL PHASE 3FM PHASE 3FN PHASE 3FO PHASE 3FP PHASE 3FQ PHASE 3FR PHASE 3FS PHASE 3FT PHASE 3FU PHASE 3FV PHASE 3FW PHASE 3FX PHASE 3FY PHASE 3FZ PHASE 3GA PHASE 3GB PHASE 3GC PHASE 3GD PHASE 3GE PHASE 3GF PHASE 3GG PHASE 3GH PHASE 3GI PHASE 3GJ PHASE 3GK PHASE 3GL PHASE 3GM PHASE 3GN PHASE 3GO PHASE 3GP PHASE 3GQ PHASE 3GR PHASE 3GS PHASE 3GT PHASE 3GU PHASE 3GV PHASE 3GW PHASE 3GX PHASE 3GY PHASE 3GZ PHASE 3HA PHASE 3HB PHASE 3HC PHASE 3HD PHASE 3HE PHASE 3HF PHASE 3HG PHASE 3HH PHASE 3HI PHASE 3HJ PHASE 3HK PHASE 3HL PHASE 3HM PHASE 3HN PHASE 3HO PHASE 3HP PHASE 3HQ PHASE 3HR PHASE 3HS PHASE 3HT PHASE 3HU PHASE 3HV PHASE 3HW PHASE 3HX PHASE 3HY PHASE 3HZ PHASE 3IA PHASE 3IB PHASE 3IC PHASE 3ID PHASE 3IE PHASE 3IF PHASE 3IG PHASE 3IH PHASE 3IJ PHASE 3IK PHASE 3IL PHASE 3IM PHASE 3IN PHASE 3IO PHASE 3IP PHASE 3IQ PHASE 3IR PHASE 3IS PHASE 3IT PHASE 3IU PHASE 3IV PHASE 3IW PHASE 3IX PHASE 3IY PHASE 3IZ PHASE 3JA PHASE 3JB PHASE 3JC PHASE 3JD PHASE 3JE PHASE 3JF PHASE 3JG PHASE 3JH PHASE 3JI PHASE 3JJ PHASE 3JK PHASE 3JL PHASE 3JM PHASE 3JN PHASE 3JO PHASE 3JP PHASE 3JQ PHASE 3JR PHASE 3JS PHASE 3JT PHASE 3JU PHASE 3JVV PHASE 3JW PHASE 3JX PHASE 3JY PHASE 3JZ PHASE 3KA PHASE 3KB PHASE 3KC PHASE 3KD PHASE 3KE PHASE 3KF PHASE 3KG PHASE 3KH PHASE 3KI PHASE 3KJ PHASE 3KL PHASE 3KM PHASE 3KN PHASE 3KO PHASE 3KP PHASE 3KQ PHASE 3KR PHASE 3KS PHASE 3KT PHASE 3KU PHASE 3KVV PHASE 3KW PHASE 3KX PHASE 3KY PHASE 3KZ PHASE 3LA PHASE 3LB PHASE 3LC PHASE 3LD PHASE 3LE PHASE 3LF PHASE 3LG PHASE 3LH PHASE 3LI PHASE 3LJ PHASE 3LK PHASE 3LL PHASE 3LM PHASE 3LN PHASE 3LO PHASE 3LP PHASE 3LQ PHASE 3LR PHASE 3LS PHASE 3LT PHASE 3LU PHASE 3LVV PHASE 3LW PHASE 3LX PHASE 3LY PHASE 3LZ PHASE 3MA PHASE 3MB PHASE 3MC PHASE 3MD PHASE 3ME PHASE 3MF PHASE 3MG PHASE 3MH PHASE 3MI PHASE 3MJ PHASE 3MK PHASE 3ML PHASE 3MN PHASE 3MO PHASE 3MP PHASE 3MQ PHASE 3MR PHASE 3MS PHASE 3MT PHASE 3MU PHASE 3MVV PHASE 3MW PHASE 3MX PHASE 3MY PHASE 3MZ PHASE 3NA PHASE 3NB PHASE 3NC PHASE 3ND PHASE 3NE PHASE 3NF PHASE 3NG PHASE 3NH PHASE 3NI PHASE 3NJ PHASE 3NK PHASE 3NL PHASE 3NO PHASE 3NP PHASE 3NQ PHASE 3NR PHASE 3NS PHASE 3NT PHASE 3NU PHASE 3NVV PHASE 3NW PHASE 3NX PHASE 3NY PHASE 3NZ PHASE 3OA PHASE 3OB PHASE 3OC PHASE 3OD PHASE 3OE PHASE 3OF PHASE 3OG PHASE 3OH PHASE 3OI PHASE 3OJ PHASE 3OK PHASE 3OL PHASE 3OM PHASE 3ON PHASE 3OO PHASE 3OP PHASE 3OQ PHASE 3OR PHASE 3OS PHASE 3OT PHASE 3OU PHASE 3OVV PHASE 3OW PHASE 3OX PHASE 3OY PHASE 3OZ PHASE 3PA PHASE 3PB PHASE 3PC PHASE 3PD PHASE 3PE PHASE 3PF PHASE 3PG PHASE 3PH PHASE 3PI PHASE 3PJ PHASE 3PK PHASE 3PL PHASE 3PM PHASE 3PN PHASE 3PO PHASE 3PP PHASE 3PQ PHASE 3PR PHASE 3PS PHASE 3PT PHASE 3PU PHASE 3PVV PHASE 3PW PHASE 3PX PHASE 3PY PHASE 3PZ PHASE 3QA PHASE 3QB PHASE 3QC PHASE 3QD PHASE 3QE PHASE 3QF PHASE 3QG PHASE 3QH PHASE 3QI PHASE 3QJ PHASE 3QK PHASE 3QL PHASE 3QM PHASE 3QN PHASE 3QO PHASE 3QP PHASE 3QQ PHASE 3QR PHASE 3QS PHASE 3QT PHASE 3QU PHASE 3QVV PHASE 3QW PHASE 3QX PHASE 3QY PHASE 3QZ PHASE 3RA PHASE 3RB PHASE 3RC PHASE 3RD PHASE 3RE PHASE 3RF PHASE 3RG PHASE 3RH PHASE 3RI PHASE 3RJ PHASE 3RK PHASE 3RL PHASE 3RM PHASE 3RN PHASE 3RO PHASE 3RP PHASE 3RQ PHASE 3RR PHASE 3RS PHASE 3RT PHASE 3RU PHASE 3RVV PHASE 3RW PHASE 3RX PHASE 3RY PHASE 3RZ PHASE 3SA PHASE 3SB PHASE 3SC PHASE 3SD PHASE 3SE PHASE 3SF PHASE 3SG PHASE 3SH PHASE 3SI PHASE 3SJ PHASE 3SK PHASE 3SL PHASE 3SM PHASE 3SN PHASE 3SO PHASE 3SP PHASE 3SQ PHASE 3SR PHASE 3SS PHASE 3ST PHASE 3SU PHASE 3SVV PHASE 3SW PHASE 3SX PHASE 3SY PHASE 3SZ PHASE 3TA PHASE 3TB PHASE 3TC PHASE 3TD PHASE 3TE PHASE 3TF PHASE 3TG PHASE 3TH PHASE 3TI PHASE 3TJ PHASE 3TK PHASE 3TL PHASE 3TM PHASE 3TN PHASE 3TO PHASE 3TP PHASE 3TQ PHASE 3TR PHASE 3TS PHASE 3TT PHASE 3TUV PHASE 3TW PHASE 3TX PHASE 3TY PHASE 3TZ PHASE 3UA PHASE 3UB PHASE 3UC PHASE 3UD PHASE 3UE PHASE 3UF PHASE 3UG PHASE 3UH PHASE 3UI PHASE 3UJ PHASE 3UK PHASE 3UL PHASE 3UM PHASE 3UN PHASE 3UO PHASE 3UP PHASE 3UQ PHASE 3UR PHASE 3US PHASE 3UT PHASE 3UU PHASE 3UVV PHASE 3UW PHASE 3UX PHASE 3UY PHASE 3UZ PHASE 3VA PHASE 3VB PHASE 3VC PHASE 3VD PHASE 3VE PHASE 3VF PHASE 3VG PHASE 3VH PHASE 3VI PHASE 3VJ PHASE 3VK PHASE 3VL PHASE 3VM PHASE 3VN PHASE 3VO PHASE 3VP PHASE 3VQ PHASE 3VR PHASE 3VS PHASE 3VT PHASE 3VUV PHASE 3VW PHASE 3VX PHASE 3VY PHASE 3VZ PHASE 3WA PHASE 3WB PHASE 3WC PHASE 3WD PHASE 3WE PHASE 3WF PHASE 3WG PHASE 3WH PHASE 3WI PHASE 3WJ PHASE 3WK PHASE 3WL PHASE 3WM PHASE 3WN PHASE 3WO PHASE 3WP PHASE 3WQ PHASE 3WR PHASE 3WS PHASE 3WT PHASE 3WUV PHASE 3WW PHASE 3WX PHASE 3WY PHASE 3WZ PHASE 3XA PHASE 3XB PHASE 3XC PHASE 3XD PHASE 3XE PHASE 3XF PHASE 3XG PHASE 3XH PHASE 3XI PHASE 3XJ PHASE 3XK PHASE 3XL PHASE 3XM PHASE 3XN PHASE 3XO PHASE 3XP PHASE 3XQ PHASE 3XR PHASE 3XS PHASE 3XT PHASE 3XUV PHASE 3XW PHASE 3XX PHASE 3XY PHASE 3XZ PHASE 3YA PHASE 3YB PHASE 3YC PHASE 3YD PHASE 3YE PHASE 3YF PHASE 3YG PHASE 3YH PHASE 3YI PHASE 3YJ PHASE 3YK PHASE 3YL PHASE 3YM PHASE 3YN PHASE 3YO PHASE 3YP PHASE 3YQ PHASE 3YR PHASE 3YS PHASE 3YT PHASE 3YUV PHASE 3YW PHASE 3YX PHASE 3YY PHASE 3YZ PHASE 3ZA PHASE 3ZB PHASE 3ZC PHASE 3ZD PHASE 3ZE PHASE 3ZF PHASE 3ZG PHASE 3ZH PHASE 3ZI PHASE 3ZJ PHASE 3ZK PHASE 3ZL PHASE 3ZM PHASE 3ZN PHASE 3ZO PHASE 3ZP PHASE 3ZQ PHASE 3ZR PHASE 3ZS PHASE 3ZT PHASE 3ZUV PHASE 3ZW PHASE 3ZX PHASE 3ZY PHASE 3ZZ

DEPARTMENT OF PUBLIC WORKS
HOWARD COUNTY, MARYLAND

[Signature]
CHIEF, BUREAU OF UTILITIES

DATE: 2/17/2021

DEPARTMENT OF PLANNING AND ZONING
HOWARD COUNTY, MARYLAND

[Signature]
CHIEF, DEVELOPMENT ENGINEERING DIVISION

DATE: 2-23-21

GLW
PLANNING | ENGINEERING | SURVEYING

3909 NATIONAL DRIVE | SUITE 250 | BURTONSVILLE, MD 20886 | GLWVA.COM
PHONE: 301-421-4024 | BALT: 410-880-1820 | DC&VA: 301-989-2524 | FAX: 301-421-4186

DESIGNED BY: JRD/AWL
DRAWN BY: AWL
CHECKED BY: DEV

DATE: FEB., 2021

G.L.W. No. 13013

PROFESSIONAL CERTIFICATION

I HEREBY CERTIFY THAT THESE PLANS WERE PREPARED OR APPROVED BY ME, AND THAT I AM A DULY LICENSED PROFESSIONAL ENGINEER UNDER THE LAWS OF THE STATE OF MARYLAND, LICENSE NO. 12975

EXP. DATE: MAY 28, 2022

[Signature]



BY	NO	REVISION	DATE

PHASING KEY MAP

600' SCALE MAP NO. 23 BLOCK NO. 6 & 12

WESTMOUNT
CONTRACT No. 24-5170-D
PHASE 3E

LOTS 176-195, 221-227 & 230-236 AND
OPEN SPACE LOTS 267, 270-272, 285, 287 & 288

HOWARD COUNTY, MARYLAND
ELECTION DISTRICT No. 2

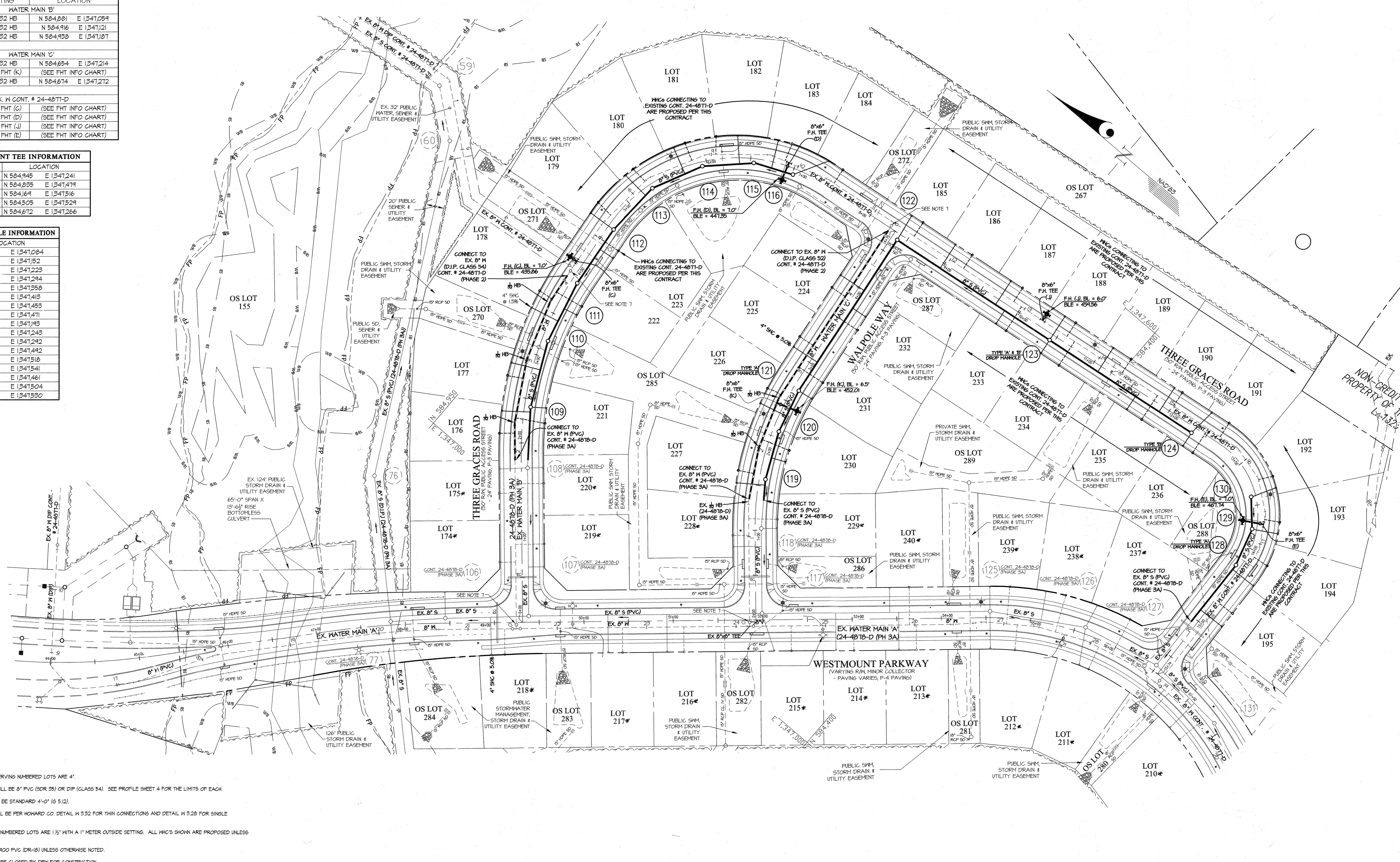
SCALE: 1"=80'

SHEET: 2 OF 5

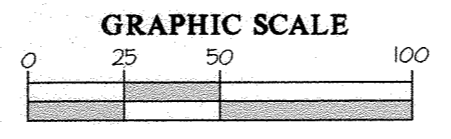
FITTING CHART			
STATION	FITTING	LOCATION	
WATER MAIN 'B'			
2+30	8" 1/32 HB	N 584.801	E 1347.054
3+00	8" 1/32 HB	N 584.916	E 1347.121
3+71	8" 1/32 HB	N 584.938	E 1347.187
WATER MAIN 'C'			
1+49	8" 1/32 HB	N 584.654	E 1347.214
2+54	8"x6" FHT (K)	(SEE FHT INFO CHART)	
2+60	8" 1/32 HB	N 584.674	E 1347.212
EX. M CONT. # 24-4871-D			
7+01	8"x6" FHT (G)	(SEE FHT INFO CHART)	
9+89	8"x6" FHT (D)	(SEE FHT INFO CHART)	
13+24	8"x6" FHT (J)	(SEE FHT INFO CHART)	
16+78	8"x6" FHT (E)	(SEE FHT INFO CHART)	

FIRE HYDRANT TEE INFORMATION	
FHT	LOCATION
(G)	N 584.945 E 1347.241
(D)	N 584.835 E 1347.479
(E)	N 584.694 E 1347.516
(J)	N 584.505 E 1347.529
(K)	N 584.672 E 1347.266

SEWER MANHOLE INFORMATION	
MH	LOCATION
109	N 584.879 E 1347.084
110	N 584.912 E 1347.152
111	N 584.929 E 1347.223
112	N 584.936 E 1347.294
113	N 584.938 E 1347.358
114	N 584.907 E 1347.415
115	N 584.865 E 1347.453
116	N 584.823 E 1347.471
117	N 584.826 E 1347.493
120	N 584.644 E 1347.243
121	N 584.662 E 1347.292
122	N 584.687 E 1347.442
123	N 584.485 E 1347.518
124	N 584.297 E 1347.541
128	N 584.163 E 1347.461
129	N 584.175 E 1347.504
130	N 584.200 E 1347.530



- NOTES:
1. ALL SHC'S SHOWN SERVING NUMBERED LOTS ARE 4".
 2. ALL SEWER MAINS WILL BE 8" PVC (SOR 35) OR DIP (CLASS 54). SEE PROFILE SHEET 4 FOR THE LIMITS OF EACH.
 3. ALL MANHOLES WILL BE STANDARD 4'-0" (6 5/12).
 4. OUTSIDE METERS WILL BE PER HOWARD CO. DETAIL W 332 FOR TWIN CONNECTIONS AND DETAIL W 329 FOR SINGLE CONNECTIONS.
 5. ALL MHC'S SERVING NUMBERED LOTS ARE 1/2" WITH A 1" METER OUTSIDE SETTING. ALL MHC'S SHOWN ARE PROPOSED UNLESS OTHERWISE NOTED.
 6. WATER MAIN IS 8" C400 PVC (DR-18) UNLESS OTHERWISE NOTED.
 7. EXISTING VALVE TO BE CLOSED BY DPW FOR CONSTRUCTION.
 8. THE WATER HOUSE CONNECTIONS FOR LOTS 179 THRU 185, 223, AND 233 THRU 236 ARE PROPOSED UNDER THIS CONTRACT, BUT ARE TYPING INTO THE EXISTING 8" M CONSTRUCTION UNDER CONT. # 24-4871-D.
 9. FOR SEWER HOUSE CONNECTION INVERT ELEVATIONS FROM THE MAIN TO THE FUTURE DWELLINGS (M.C.E.), SEE SHEET 5.



NOTE: LOTS SHOWN WITH AN ASTERISK (*) INDICATES LOTS ASSOCIATED WITH FHT OR, BUT ARE NOT IN THIS CONTRACT. LOTS SHOWN AS "FUTURE" ARE PART OF F 21-032.

L:\CADD\DRAWINGS\2021\PLANS BY GLW\SEWERALS\PHASE 3\PHASE 3E\3013-PHASE-FINALS-WS-PLAN.dwg, DATE: 2/17/2021, 10:30 AM, LAST SAVER: 2/17/2021, 10:30 AM, PLOTTED BY: Tony, layout

DEPARTMENT OF PUBLIC WORKS
HOWARD COUNTY, MARYLAND

[Signature] 2/17/2021
CHIEF, BUREAU OF UTILITIES

DEPARTMENT OF PLANNING AND ZONING
HOWARD COUNTY, MARYLAND

[Signature] 3-23-21
CHIEF, DEVELOPMENT ENGINEERING DIVISION

GLW
PLANNING | ENGINEERING | SURVEYING

3909 NATIONAL DRIVE | SUITE 250 | BURTONSVILLE, MD 20886 | GLWPA.COM
PHONE: 301-421-4204 | BALT: 410-880-1822 | DC/VA: 301-989-2524 | FAX: 301-421-4188

DESIGNED BY: JRD
DRAWN BY: AWL
CHECKED BY: DEV

DATE: FEB., 2021
G.L.W. No. 13013

PROFESSIONAL CERTIFICATION
I HEREBY CERTIFY THAT THESE PLANS WERE PREPARED OR APPROVED BY ME, AND THAT I AM A DULY LICENSED PROFESSIONAL ENGINEER UNDER THE LAWS OF THE STATE OF MARYLAND, LICENSE NO. 12975
EXP. DATE: MAY 26, 2022
2/9/21

BY	NO	REVISION	DATE

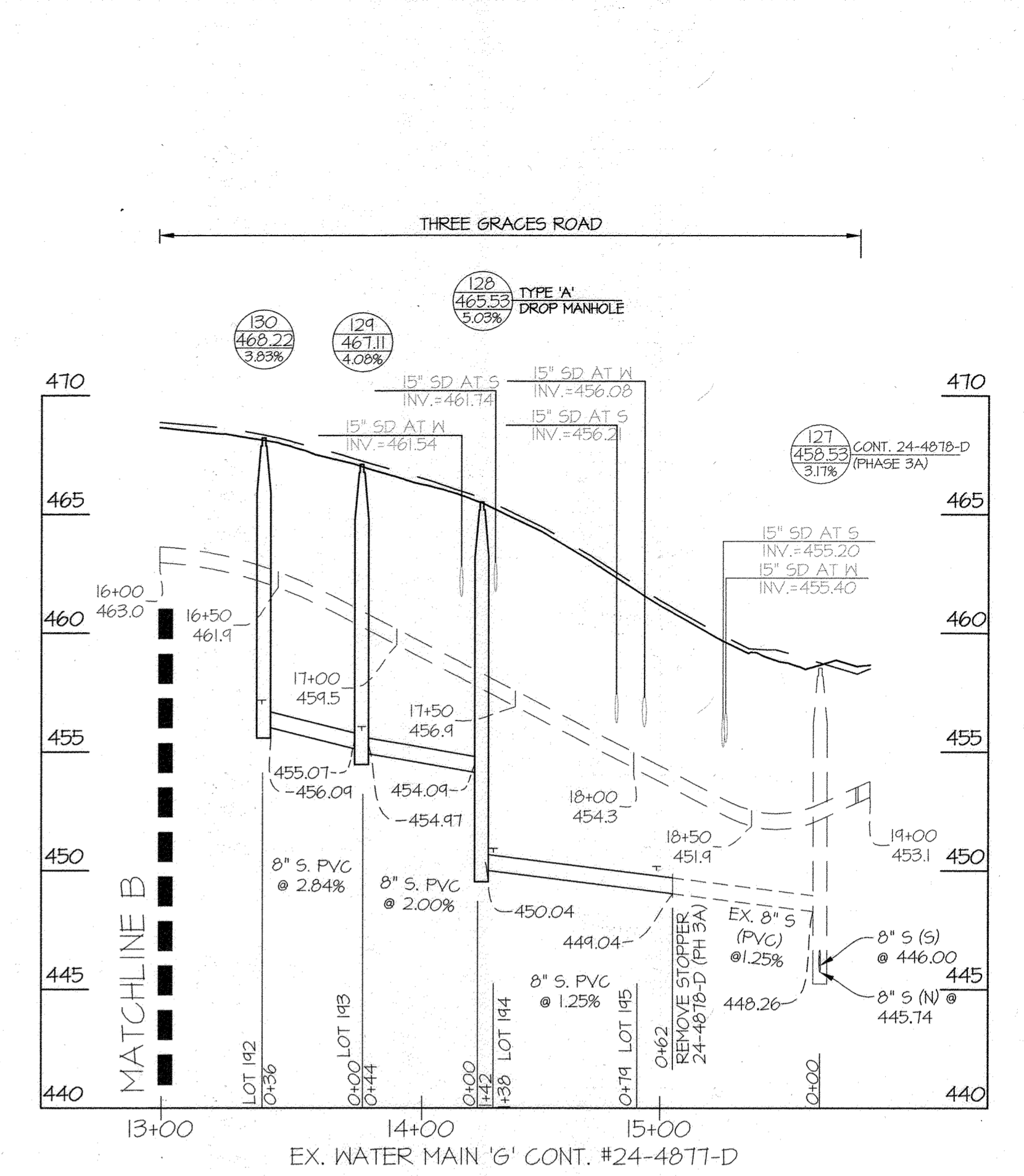
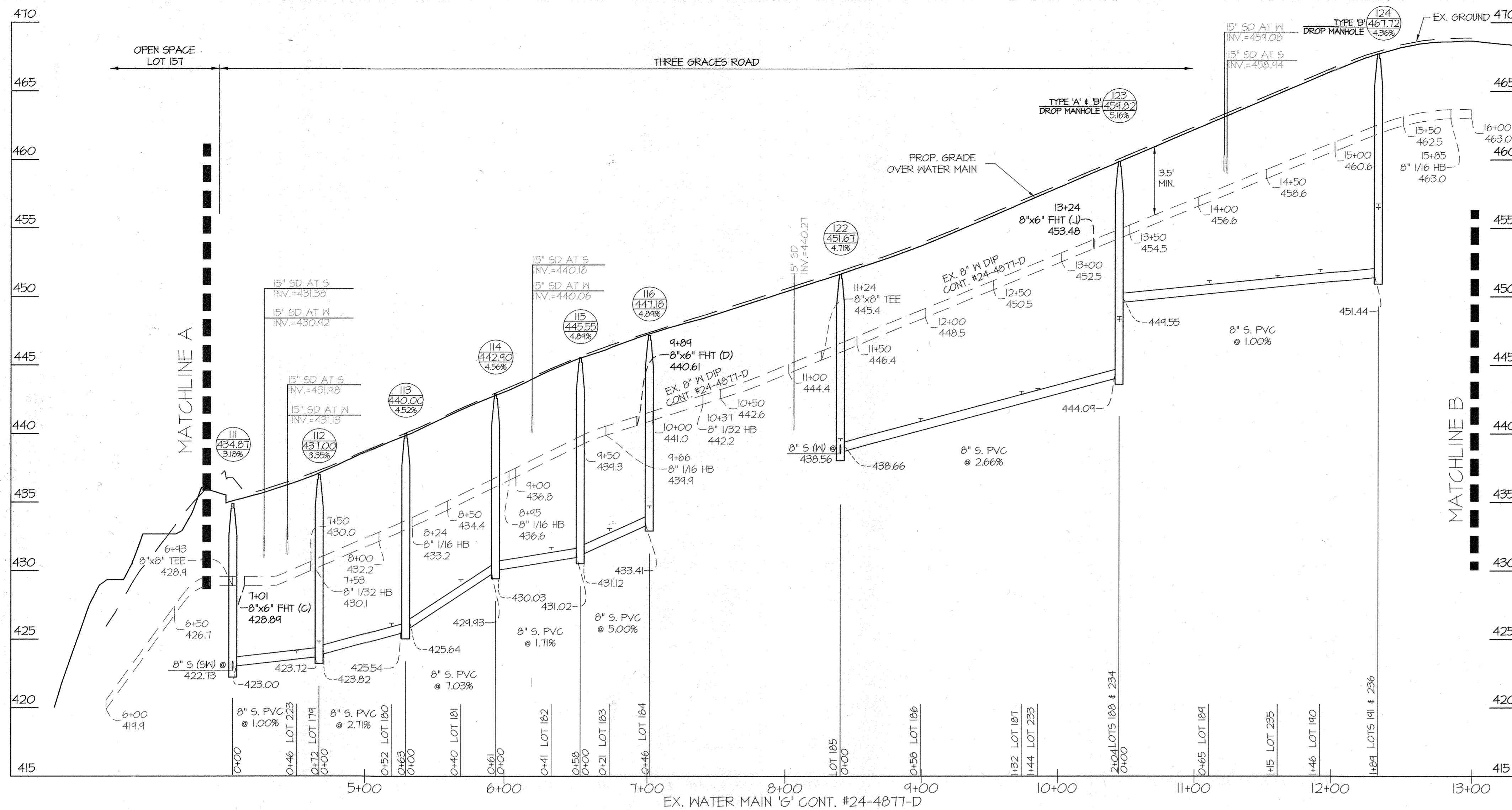
WATER and SEWER PLAN

600' SCALE MAP NO. 23 BLOCK NO. 6 & 12

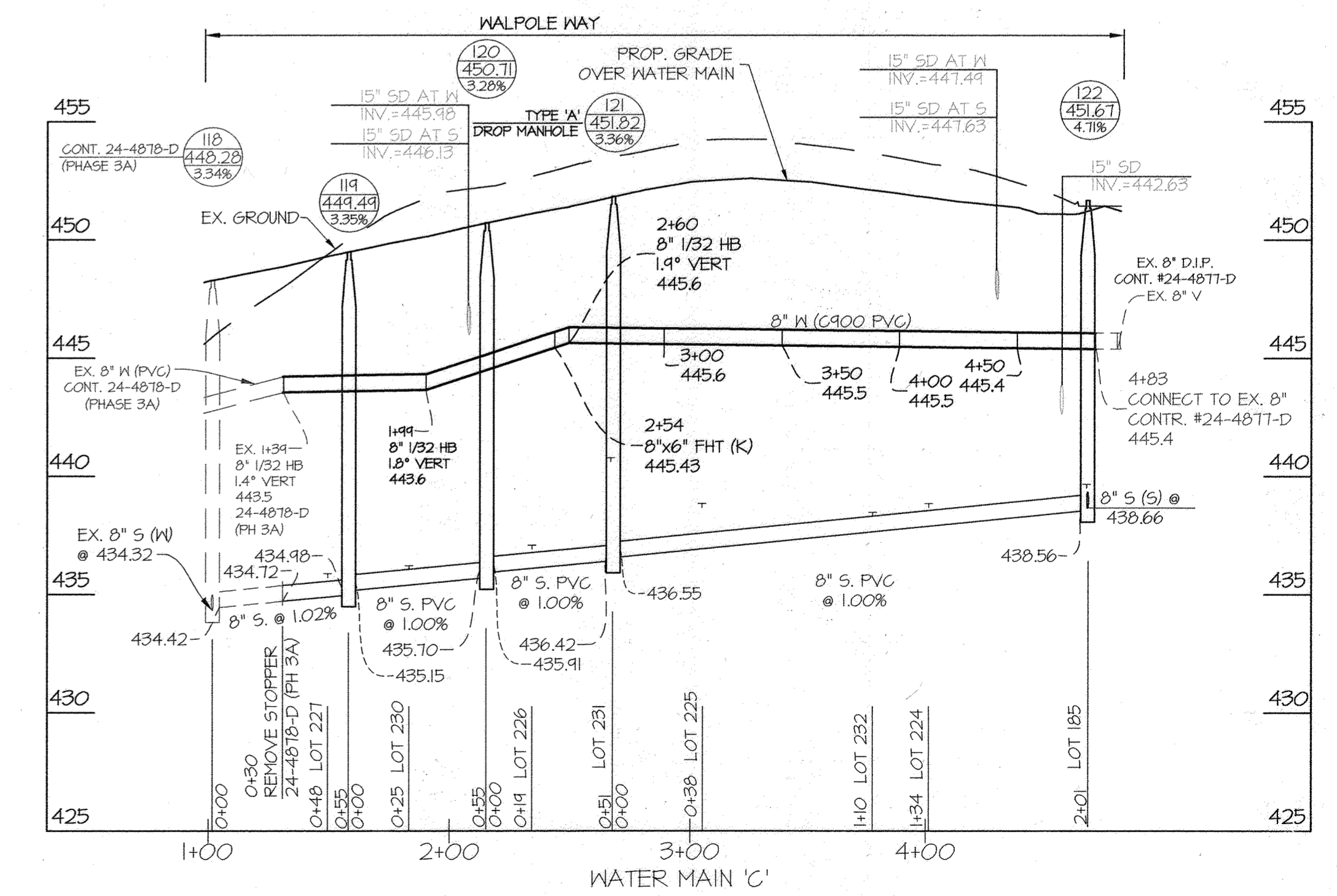
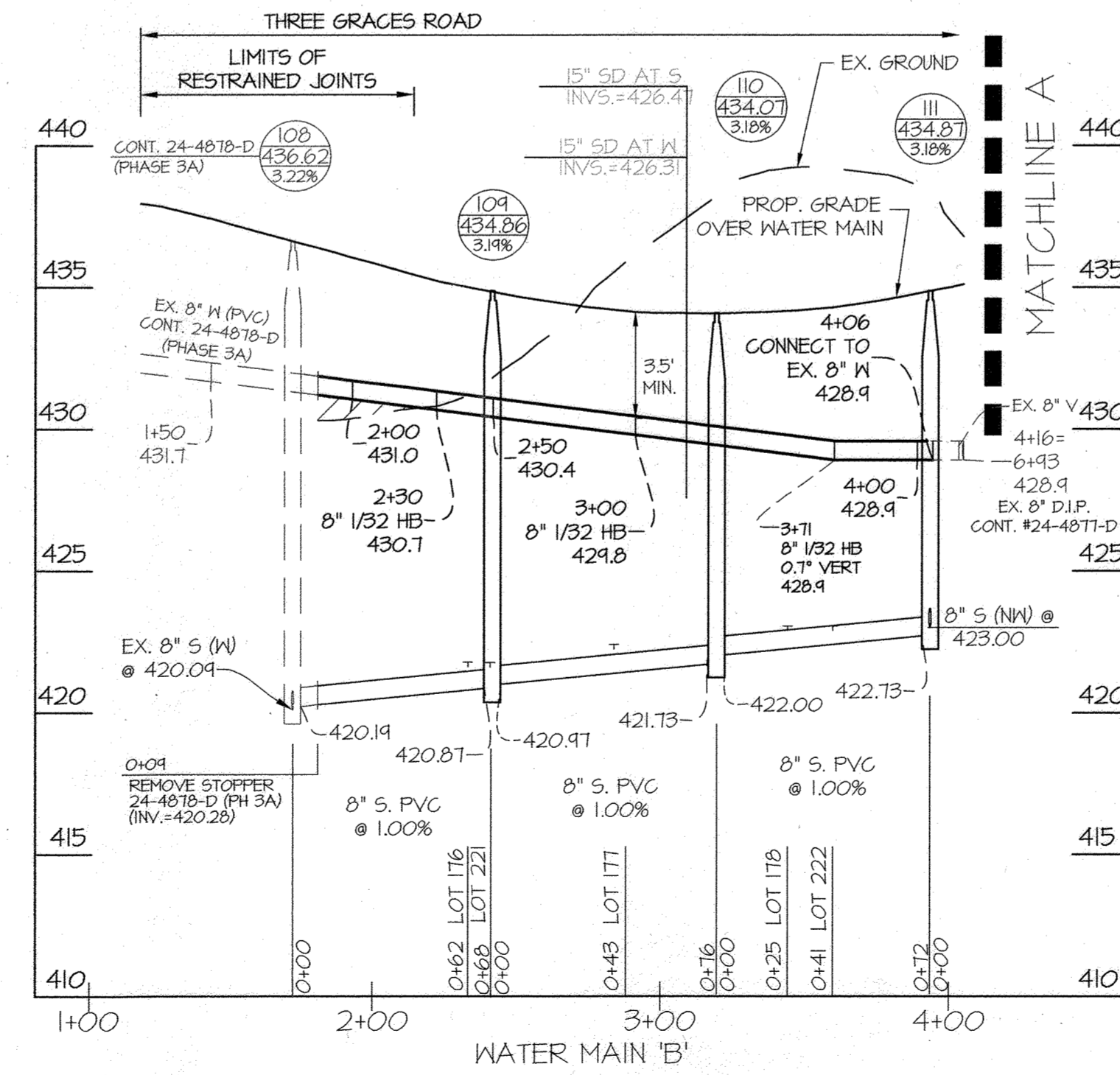
WESTMOUNT
CONTRACT No. 24-5170-D
PHASE 3E

LOTS 176-195, 221-227 & 230-236 AND OPEN SPACE LOTS 267, 270-272, 285, 287 & 288
HOWARD COUNTY, MARYLAND
ELECTION DISTRICT No. 2

SCALE 1"=50'
SHEET 3 OF 5



- NOTES:
1. THE SYMBOL THAT REPRESENTS THE LOCATION OF A SEWER HOUSE CONNECTION IS SHOWN AT THE ELEVATION OF THE CONNECTION AT EITHER THE EDGE OF THE RIGHT-OF-WAY LINE OR EASEMENT LINE.
 2. FOR SEWER HOUSE CONNECTION INVERTS AT POINTS BETWEEN THE MAIN AND FUTURE DWELLING, SEE SHEET 5.
 3. FOR MINIMUM CELLAR ELEVATIONS (M.C.E.), SEE SHEET 5.
 4. OTHER THAN SEWER HOUSE CONNECTIONS AT MANHOLES, ALL CONNECTIONS WILL TIE INTO THE MAIN, MATCHING CENTERLINES.
 5. ALL D.I.P. WATER MAINS ARE CLASS 54 UNLESS OTHERWISE NOTED.
 6. ALL P.V.C. WATER MAINS ARE C900 DR-18 UNLESS OTHERWISE NOTED.
 7. ALL P.V.C. SEWER MAINS ARE SDR 35 UNLESS OTHERWISE NOTED.
 8. ALL D.I.P. SEWER MAINS ARE CLASS 54 UNLESS OTHERWISE NOTED. SEE PROFILE THIS SHEET FOR LIMITS OF D.I.P.



L:\CADD\DRAWINGS\2021\PHASE 3\PHASE 3A\10115-PLATE-FINALS-HS-PRO-LES.dwg
 PLOTTED: 2/17/2021 10:42 AM, LAST SAVED: 2/17/2021 10:42 AM, PLOTTED BY: JERRY LANGRISH

DEPARTMENT OF PUBLIC WORKS
 HOWARD COUNTY, MARYLAND
 Chief, Bureau of Utilities
 DATE: 2/17/2021

DEPARTMENT OF PLANNING AND ZONING
 HOWARD COUNTY, MARYLAND
 Chief, Development Engineering Division
 DATE: 3-29-21

GLW
 PLANNING | ENGINEERING | SURVEYING
 3909 NATIONAL DRIVE | SUITE 250 | BURTONSVILLE, MD 20886 | GLWPA.COM
 PHONE: 301-421-4024 | BALT: 410-880-1820 | DC/VA: 301-689-2624 | FAX: 301-421-4186

DESIGNED BY: JRD
 DRAWN BY: AWL
 CHECKED BY: DEV
 DATE: FEB., 2021
 G.L.W. No. 13013

PROFESSIONAL CERTIFICATION
 I HEREBY CERTIFY THAT THESE PLANS WERE PREPARED OR APPROVED BY ME, AND THAT I AM A DULY LICENSED PROFESSIONAL ENGINEER UNDER THE LAWS OF THE STATE OF MARYLAND.
 LICENSE NO. 12375
 EXP. DATE: MAY 26, 2022
 2/9/21

BY	NO	REVISION	DATE

WATER and SEWER PROFILES
 600' SCALE MAP NO. 23
 BLOCK NO. 6 & 12

WESTMOUNT
 CONTRACT No. 24-5170-D
 PHASE 3E
 LOTS 176-195, 221-227 & 230-236 AND
 OPEN SPACE LOTS 267, 270-272, 285, 287 & 288
 HOWARD COUNTY, MARYLAND
 ELECTION DISTRICT No. 2

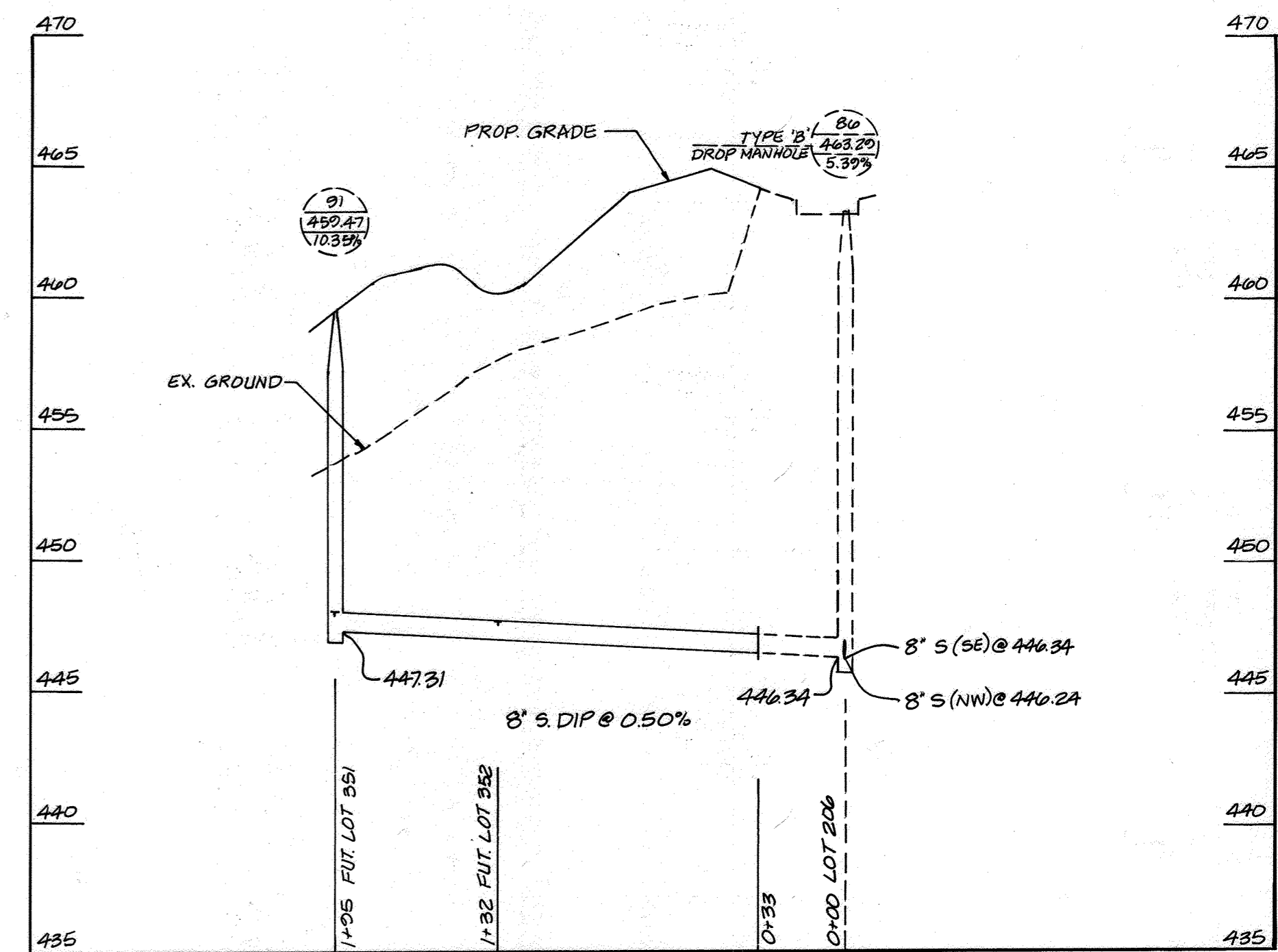
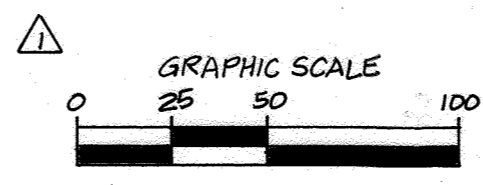
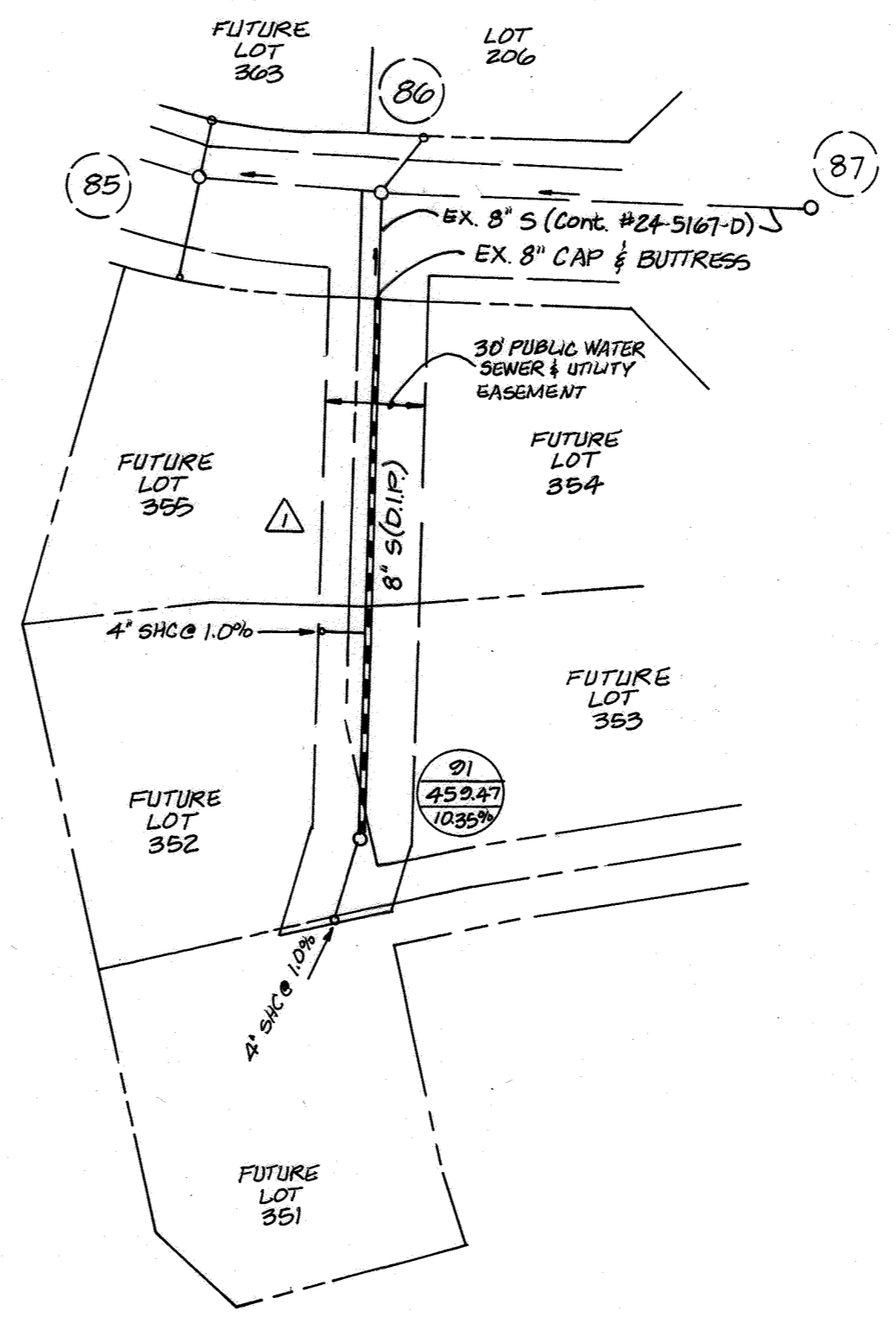
SCALE
 1"=50'(H)
 1"=5'(V)
 SHEET
 4 OF 5

SEWER HOUSE CONNECTION INFORMATION AND MINIMUM CELLAR ELEVATIONS (M.C.E.)				
LOT	SLOPE OF SHC	INV. @ MAIN/WH	INV. @ R/W SEE NOTE 1	M.C.E. SEE NOTE 2
176	2.00%	420.96	421.62	425.82
177	2.00%	421.55	422.23	426.33
178	1.50%	422.40	422.88	426.60
179	2.00%	424.05	424.64	428.84
180	2.00%	425.35	426.03	430.23
181	2.00%	428.41	424.14	433.34
182	2.00%	430.88	431.56	435.46
183	2.00%	432.24	432.92	437.22
184	2.00%	433.14	434.58	438.98
185	2.00%	438.84	434.44	443.44
186	2.00%	440.32	440.96	445.06
187	2.00%	442.28	442.92	446.92
188	2.00%	441.77	448.37	452.37
189	2.00%	450.35	450.94	455.04
190	2.00%	451.16	451.80	455.70
191	2.00%	456.00	456.62	460.82
192	2.00%	456.42	457.02	461.12
193	2.00%	455.30	455.90	460.00
194	2.00%	450.13	450.77	455.07
195	2.00%	449.34	450.03	454.03
221	2.00%	421.20	421.56	425.36
222	2.00%	422.56	422.88	426.88
223	2.00%	423.61	423.97	428.07
224	2.00%	438.04	438.68	442.68
225	5.00%	437.08	438.68	445.43
226	2.00%	436.25	436.91	441.11
227	2.00%	435.06	435.72	439.82
230	2.00%	435.71	436.05	439.85
231	2.00%	440.30	440.62	444.72
232	2.00%	437.96	438.32	442.22
233	2.00%	442.77	443.13	447.03
234	2.00%	447.85	448.17	452.37
235	2.00%	451.01	451.37	456.37
236	2.00%	456.03	456.35	460.25

AS-BUILT INFORMATION					
LOT #	ADDRESS	WATER HOUSE CONNECTION AS BUILT		SEWER HOUSE CONNECTION AS BUILT	
		LOCATION DIM. 1	LOCATION DIM. 2	LOCATION DIM. 1	LOCATION DIM. 2
176	THREE GRACES ROAD				
177	THREE GRACES ROAD				
178	THREE GRACES ROAD				
179	THREE GRACES ROAD				
180	THREE GRACES ROAD				
181	THREE GRACES ROAD				
182	THREE GRACES ROAD				
183	THREE GRACES ROAD				
184	THREE GRACES ROAD				
185	THREE GRACES ROAD				
186	THREE GRACES ROAD				
187	THREE GRACES ROAD				
188	THREE GRACES ROAD				
189	THREE GRACES ROAD				
190	THREE GRACES ROAD				
191	THREE GRACES ROAD				
192	THREE GRACES ROAD				
193	THREE GRACES ROAD				
194	THREE GRACES ROAD				
195	THREE GRACES ROAD				
221	THREE GRACES ROAD				
222	THREE GRACES ROAD				
223	THREE GRACES ROAD				
224	WALPOLE WAY				
225	WALPOLE WAY				
226	WALPOLE WAY				
227	WALPOLE WAY				
230	WALPOLE WAY				
231	WALPOLE WAY				
232	WALPOLE WAY				
233	THREE GRACES ROAD				
234	THREE GRACES ROAD				
235	THREE GRACES ROAD				
236	THREE GRACES ROAD				
351	WESTMOUNT PKWY	SEE CONT. #24-5169-D			
352	WESTMOUNT PKWY	SEE CONT. #24-5169-D			

NOTE:
 1. THIS VALUE IS THE INVERT OF THE S.H.C. AT EITHER THE EDGE OF THE RIGHT-OF-WAY OR EASEMENT LINE.
 2. IT WILL BE THE RESPONSIBILITY OF THE ENGINEER PREPARING THE SITE DEVELOPMENT PLAN TO ENSURE THE FINAL BASEMENT ELEVATION IS ABOVE THE MINIMUM CELLAR ELEVATION (M.C.E.) SHOWN IN THIS TABLE.

351	1.00%	447.64	447.88	450.28
352	1.00%	447.32	447.47	450.57



PROFILE
 HORIZ. 1"=50'
 VERT. 1"=5'

L:\CAD\DRAWINGS\13013\PLANS BY GLW\5\13013-PHC-FINALS-WF-PROFILES.dwg
 DATE: 2/17/2022 10:52 AM
 USER: JAG

DEPARTMENT OF PUBLIC WORKS HOWARD COUNTY, MARYLAND CHIEF, BUREAU OF UTILITIES DATE: 2/17/2022	DEPARTMENT OF PLANNING AND ZONING HOWARD COUNTY, MARYLAND CHIEF, DEVELOPMENT ENGINEERING DIVISION DATE: 3-29-21	 PLANNING ENGINEERING SURVEYING 3909 NATIONAL DRIVE SUITE 250 BURTONSVILLE, MD 20886 GLWPA.COM PHONE: 301-421-4024 BALT: 410-880-1820 DC/VA: 301-989-2524 FAX: 301-421-4188	DESIGNED BY: JRD DRAWN BY: LAG CHECKED BY: DEV	DATE: FEB., 2021 G.L.W. No. 13013	PROFESSIONAL CERTIFICATION I HEREBY CERTIFY THAT THESE PLANS WERE PREPARED OR APPROVED BY ME, AND THAT I AM A DULY LICENSED PROFESSIONAL ENGINEER UNDER THE LAWS OF THE STATE OF MARYLAND. LICENSE NO. 12975 EXP. DATE: MAY 26, 2022 	REMOVE PART OF 8" FROM CONT. # 24-5167-D AND INCLUDE IT IN CONT. # 24-5170-D 04-02-22	MINIMUM CELLAR ELEVATIONS AND AS-BUILT INFORMATION 600' SCALE MAP NO. 23 BLOCK NO. 6 & 12	WESTMOUNT CONTRACT No. 24-5170-D PHASE 3E LOTS 176-195, 221-227 & 230-236 AND OPEN SPACE LOTS 267, 270-272, 285, 287 & 288 HOWARD COUNTY, MARYLAND ELECTION DISTRICT No. 2	SCALE AS SHOWN
			BY: NO REVISION:	DATE:	SHEET 5 OF 5				