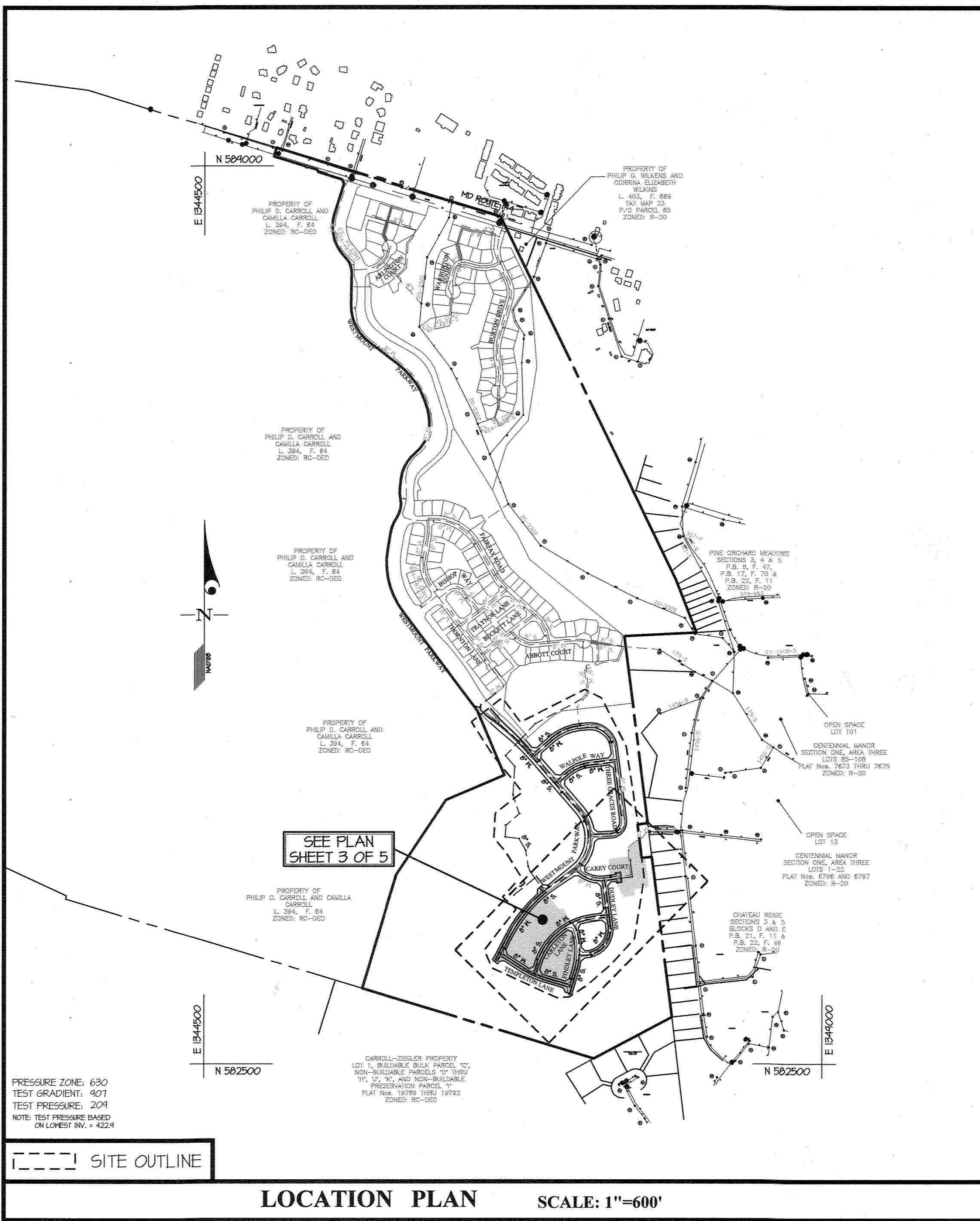


ITEMS	QUANTITIES ESTIMATED	AS-BUILT		
		QUANTITIES	TYPE	MANUFACTURER/SUPPLIER
6" DIP WATER MAIN (CL. 54 DIP)	54 L.F.			
8" PVC WATER MAIN (C-400 DR-18)	1874 L.F.			
1-1/2" W/C	884 L.F.			
1" METER VAULT	39 EA.			
8"x8" TEE	3 EA.			
8"x6" FHT	4 EA.			
FIRE HYDRANTS	4 EA.			
8" 1/32 BEND	13 EA.			
8" 1" HDC	1 EA.			
8" 1.5" HDC	1 EA.			
8" 2" HDC	2 EA.			
8" 2.5" HDC	2 EA.			
8" 3" HDC	4 EA.			
8" VALVE	6 EA.			
8" 0.5" HDC	1 ea.			
8" PVC SEWER MAIN (SDR 35 PVC)	1742 L.F.			
8" DIP SEWER MAIN (CL. 54 DIP)	318 L.F.			
4" MANHOLES	20 EA.			
4" S/C	244 L.F.			
4" CLEANOUT	38 EA.			

NAME OF UTILITY CONTRACTOR: _____

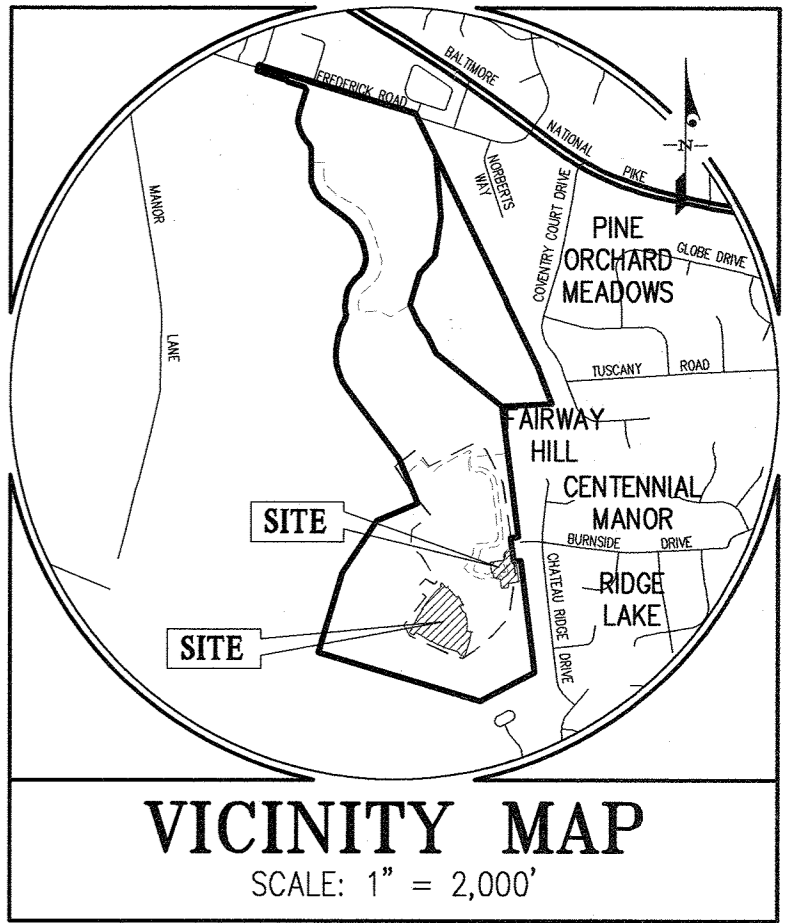
SURVEY AND DRAFTING DIV. CHECKBOX: _____ AS-BUILT DATE: _____



CONTRACT No. 24-5169-D
WESTMOUNT
 PHASE 3D
 LOTS 246-257, 261-266, OPENS SPACE LOTS 291-293
 AND FUTURE LOTS 295, 296, 347-354, 364-368, & 388-394
 HOWARD COUNTY, MARYLAND
 DEPARTMENT OF PUBLIC WORKS

TYPE OF BUILDING	RESIDENTIAL
NUMBER OF UNITS	39
NUMBER OF S.H.C.'s	39
NUMBER OF W.H.C.'s	39 SINGLE
AREA OF COMMERCIAL LOT/PARCEL	0.0 AC.
SEWER WATERSHED	MIDDLE PATUXENT
PUMPING STATION	N/A

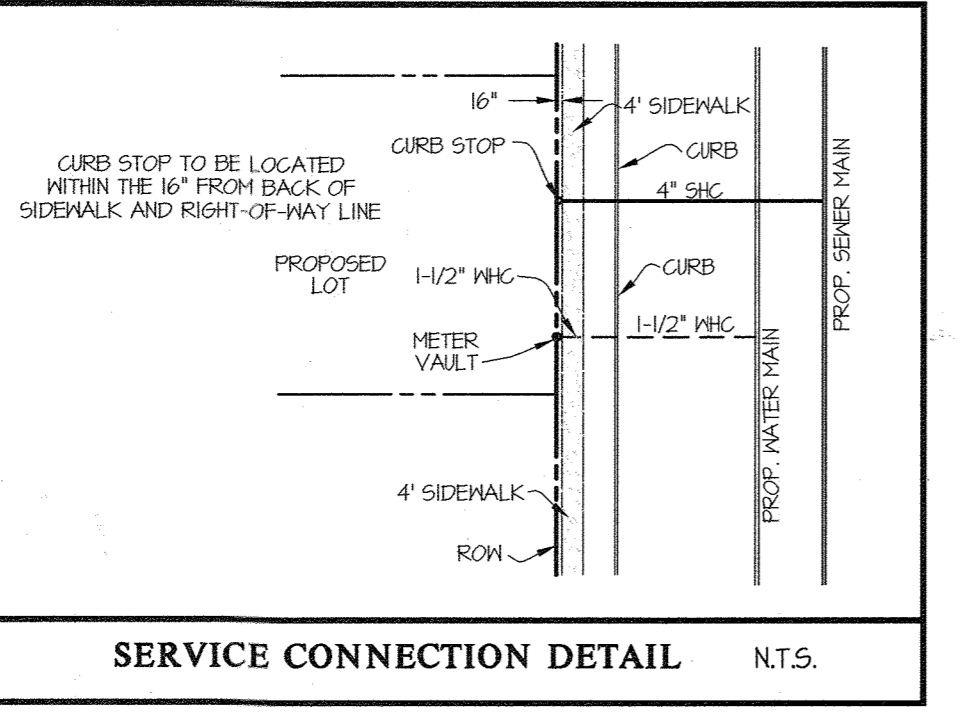
NOTE: THE ADDITIONAL 20 S.H.C.'S AND 22 W.H.C.'S ARE BEING CONSTRUCTED UNDER THIS CONTRACT TO SERVE FUTURE LOTS.



BENCHMARKS
 16HC: NORTHING: 594780.408 EASTING: 1341530.147
 16HD: NORTHING: 594674.171 EASTING: 1340043.536
 ADC MAP COORDINATES: MAP 4814 GRID 15 THRU 18 GRID K5 THRU K8

LEGEND

METER (OUTSIDE SETTING)	WATER HOUSE CONNECTION
8" W	WATER LINE (PUBLIC-per separate contract)
FIRE HYDRANT (FH)	WATER LINE (PUBLIC-per this contract)
CLEAN OUT	PUBLIC WATER EASEMENT
8" S	SEWER HOUSE CONNECTION
	SEWER LINE (PUBLIC-per separate contract)
	SEWER LINE (PUBLIC-per this contract)
	PUBLIC SEWER EASEMENT
	PROPOSED STORM DRAIN (per F-PLAN)
	EXISTING WATER MAIN
	EXISTING SEWER MAIN
	FUTURE STORM DRAIN
	FUTURE PROPERTY LINE
	EXISTING CONTOUR (PER F 12-30)
	SB
	STREAM BUFFER
	WB
	WETLAND BUFFER
	WETLAND AREA
FCE	FOREST CONSERVATION EASEMENT
FP	FLOOD PLAIN LIMITS
EC	ELECTRIC CONDUIT



- SHEET INDEX**
- COVER SHEET
 - PHASING KEY MAP
 - WATER AND SEWER PLAN (1"=50')
 - WATER AND SEWER PROFILES
 - MINIMUM CELLAR ELEVATIONS AND AS-BUILT INFORMATION

SEDIMENT CONTROL MEASURES WILL BE IMPLEMENTED IN ACCORDANCE WITH F-17-001, SECTION 308 OF THE SPECIFICATIONS AT FINAL ROAD PLAN STAGE.

REVIEWED FOR HOWARD SOIL CONSERVATION DISTRICT AND MEETS TECHNICAL REQUIREMENT

SIGNATURE: _____ DATE: _____

U.S.D.A. NATURAL RESOURCES CONSERVATION SERVICE

THIS DEVELOPMENT PLAN IS APPROVED FOR SOIL EROSION AND SEDIMENT CONTROL BY THE HOWARD SOIL CONSERVATION DISTRICT.

APPROVED: *Alexander Bratchis* 03/01/2021
 HOWARD S.C.D. DATE

OWNER/DEVELOPER
 WESTMOUNT DEVELOPMENT CORP.
 307 INTERNATIONAL CIRCLE
 SUITE 130
 HUNT VALLEY, MD 21030
 410-489-4484
 ATTN: ROBERT GOODIER

DEPARTMENT OF PUBLIC WORKS
 HOWARD COUNTY, MARYLAND

[Signature] 2/17/2021
 CHIEF, BUREAU OF UTILITIES DATE

DEPARTMENT OF PLANNING AND ZONING
 HOWARD COUNTY, MARYLAND

[Signature] 3-19-21
 CHIEF, DEVELOPMENT ENGINEERING DIVISION DATE

GLW
 PLANNING | ENGINEERING | SURVEYING

3909 NATIONAL DRIVE | SUITE 250 | BURTONSVILLE, MD 20866 | GLWPA.COM
 PHONE: 301-421-4024 | BALT: 410-880-1820 | DCVA: 301-989-2524 | FAX: 301-421-4196

DESIGNED BY: JRD/AWL
 DRAWN BY: AWL
 CHECKED BY: DEV

DATE: FEB., 2021

G.L.W. No. 13013

PROFESSIONAL CERTIFICATION

I HEREBY CERTIFY THAT THESE PLANS WERE PREPARED OR APPROVED BY ME, AND THAT I AM A DULY LICENSED PROFESSIONAL ENGINEER UNDER THE LAWS OF THE STATE OF MARYLAND, LICENSE NO. 12975

EXP. DATE: MAY 26, 2022

2/17/21

BY	NO	updated aty table per plan changes	12/21/21
REVISION			

COVER SHEET

600' SCALE MAP NO. 23 BLOCK NO. 6 & 12

WESTMOUNT
 CONTRACT No. 24-5169-D
 PHASE 3D

LOTS 246-257, 261-266, OPENS SPACE LOTS 291-293 AND FUTURE LOTS 295, 296, 347-354, 364-368, & 388-394

HOWARD COUNTY, MARYLAND
 ELECTION DISTRICT No. 2

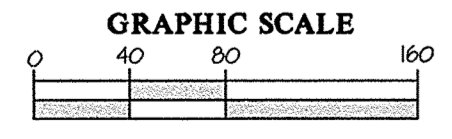
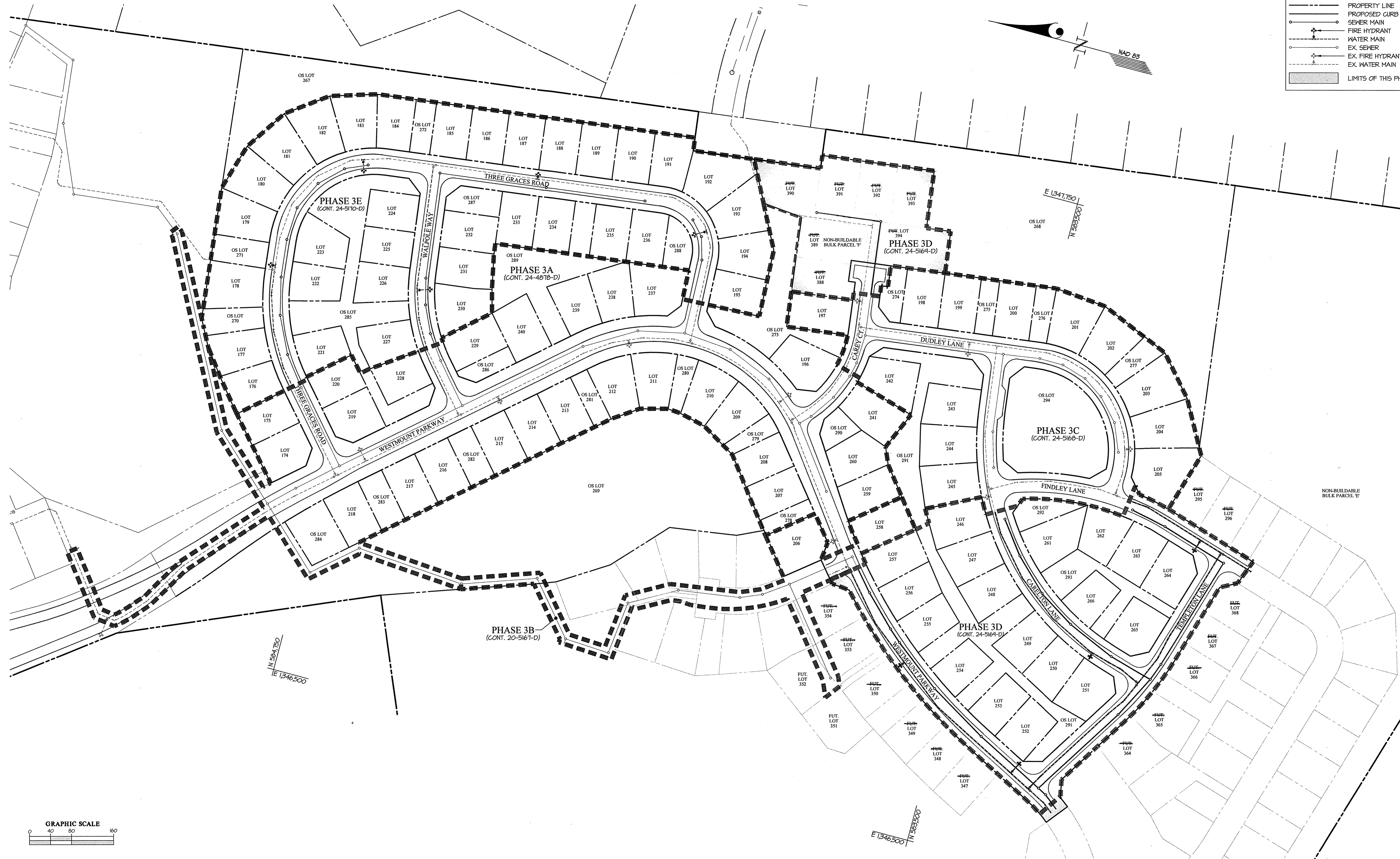
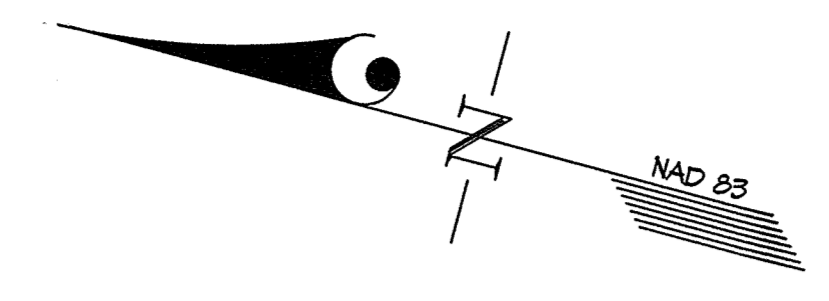
SCALE AS SHOWN

SHEET 1 OF 5

L: CARD DRAWINGS \13013\PLANS BY: GLW\SYNALS\PHASE 3\PHASE 30113013-PH3D-FINALS-MS-COVER SHEET.dwg. DATE: 2/17/21 10:58 AM. LAST SAVE: 2/17/21 10:58 AM. PLOT: 2/17/21 10:58 AM. PLOTTER: HP DesignJet T1100e. PLOTTING: 2/17/21 10:58 AM.

LEGEND

- PROPERTY LINE
- PROPOSED CURB
- SEWER MAIN
- FIRE HYDRANT
- WATER MAIN
- EX. SEWER
- EX. FIRE HYDRANT
- EX. WATER MAIN
- ▭ LIMITS OF THIS PHASE



L&C/D DRAWINGS DEVELOPED BY GWL/WR/PLANS/PHASE 3/PHASE 3D/24-5169-D/PHD-PLANS-MS-WHY MAP.MXD
 PLOTTED 2/17/2021 2:43 PM, LAST SAVED 2/17/2021 2:43 PM, PLOTTED BY: TONY LEBLANC

DEPARTMENT OF
 PUBLIC WORKS
 HOWARD COUNTY, MARYLAND
[Signature]
 CHIEF, BUREAU OF UTILITIES
 DATE: 2/17/2021

DEPARTMENT OF
 PLANNING AND ZONING
 HOWARD COUNTY, MARYLAND
[Signature]
 CHIEF, DEVELOPMENT ENGINEERING DIVISION
 DATE: 3-19-21

GLW
 PLANNING | ENGINEERING | SURVEYING
 3909 NATIONAL DRIVE | SUITE 250 | BURTONSVILLE, MD 20896 | GLW@PA.COM
 PHONE: 301-421-4024 | BALT: 410-880-1820 | DC/VA: 301-889-2524 | FAX: 301-421-4186

DESIGNED BY: JRD/AWL
 DRAWN BY: AWL
 CHECKED BY: DEV
 DATE: FEB., 2021
 G.L.W. No. 13013

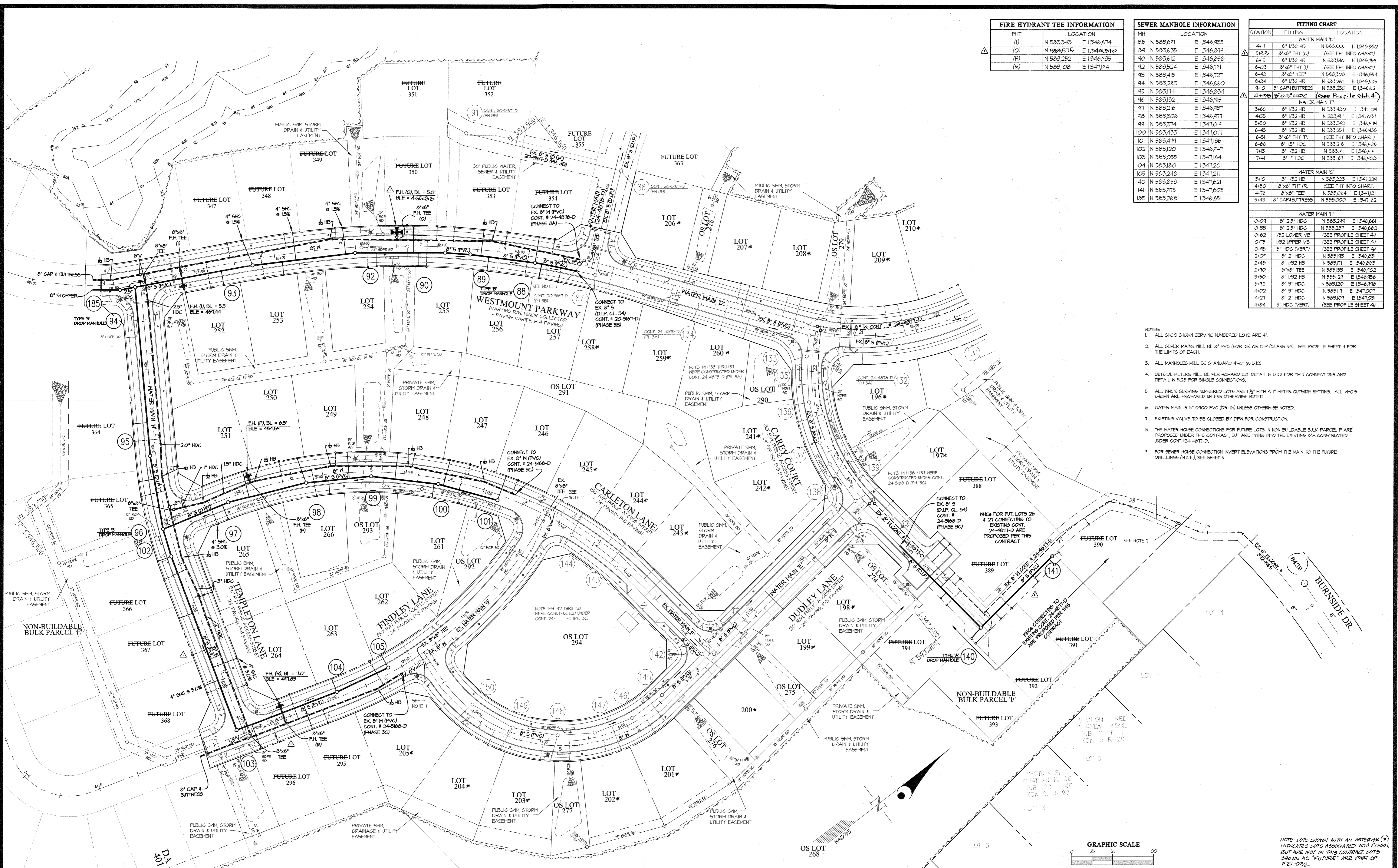
PROFESSIONAL CERTIFICATION
 I HEREBY CERTIFY THAT THESE PLANS WERE PREPARED OR APPROVED BY ME, AND THAT I AM A DULY LICENSED PROFESSIONAL ENGINEER UNDER THE LAWS OF THE STATE OF MARYLAND.
 LICENSE NO. 12975
 EXP. DATE: MAY 26, 2022

BY	NO	REVISION	DATE

PHASING KEY MAP
 600' SCALE MAP NO. 23 BLOCK NO. 6 & 12

WESTMOUNT
 CONTRACT No. 24-5169-D
 PHASE 3D
 LOTS 246-257, 261-266, OPENS SPACE LOTS 291-293
 AND FUTURE LOTS 295, 296, 347-354, 364-368, & 388-394
 HOWARD COUNTY, MARYLAND
 ELECTION DISTRICT No. 2

SCALE
 1"=80'
 SHEET
 2 OF 5

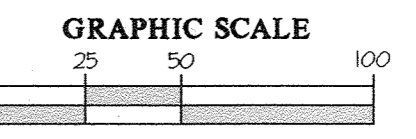


FIRE HYDRANT TEE INFORMATION		
FHT	LOCATION	
(I)	N 583,343	E 1346,674
(O)	N 583,575	E 1346,610
(P)	N 583,252	E 1346,935
(R)	N 583,102	E 1347,194

SEWER MANHOLE INFORMATION		
MH	LOCATION	
88	N 583,641	E 1346,935
89	N 583,635	E 1346,674
90	N 583,612	E 1346,858
92	N 583,524	E 1346,791
93	N 583,415	E 1346,721
94	N 583,285	E 1346,660
95	N 583,174	E 1346,834
96	N 583,132	E 1346,915
97	N 583,216	E 1346,937
98	N 583,306	E 1346,977
99	N 583,374	E 1347,019
100	N 583,433	E 1347,077
101	N 583,479	E 1347,136
102	N 583,120	E 1346,947
103	N 583,055	E 1347,164
104	N 583,180	E 1347,201
105	N 583,248	E 1347,217
140	N 583,855	E 1347,621
141	N 583,975	E 1347,605
185	N 583,268	E 1346,651

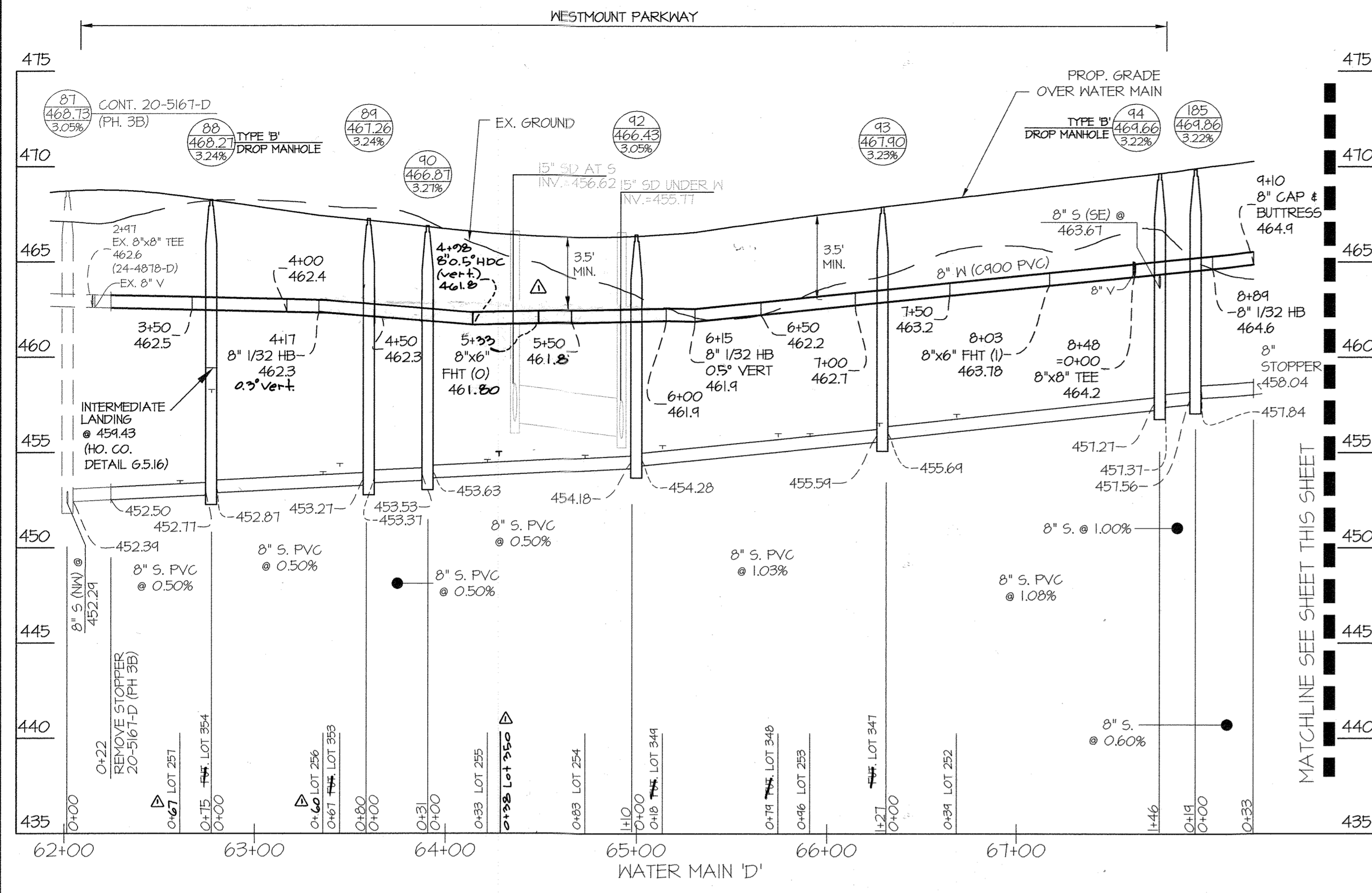
FITTING CHART		
STATION	FITTINGS	LOCATION
WATER MAIN 'D'		
4+17	8" 1/2" HB	N 583,666 E 1346,882
5+33	8"x6" FHT (O)	(SEE FHT INFO CHART)
6+15	8" 1/2" HB	N 583,510 E 1346,754
8+08	8"x6" FHT (I)	(SEE FHT INFO CHART)
8+48	8"x8" TEE	N 583,303 E 1346,654
8+84	8" 1/2" HB	N 583,267 E 1346,635
9+10	8" CAP/BUTTRRESS	N 583,250 E 1346,621
WATER MAIN 'F'		
9+40	8" 1/2" HB	N 583,480 E 1347,104
4+55	8" 1/2" HB	N 583,411 E 1347,057
5+50	8" 1/2" HB	N 583,342 E 1346,979
6+45	8" 1/2" HB	N 583,251 E 1346,936
6+51	8"x6" FHT (P)	(SEE FHT INFO CHART)
6+86	8" 1/2" HDG	N 583,218 E 1346,928
7+13	8" 1/2" HB	N 583,141 E 1346,919
7+41	8" 1" HDG	N 583,167 E 1346,908
WATER MAIN 'H'		
3+10	8" 1/2" HB	N 583,223 E 1347,129
4+20	8"x6" FHT (R)	(SEE FHT INFO CHART)
4+76	8"x8" TEE	N 583,064 E 1347,181
5+43	8" CAP/BUTTRRESS	N 583,000 E 1347,162
WATER MAIN 'I'		
0+04	8" 2 1/2" HDG	N 583,249 E 1346,661
0+33	8" 2 1/2" HDG	N 583,287 E 1346,682
0+62	1/2" LOWER VB	(SEE PROFILE SHEET 4)
0+75	1/2" UPPER VB	(SEE PROFILE SHEET 4)
0+95	8" HDG (VERT)	(SEE PROFILE SHEET 4)
2+04	8" 2" HDG	N 583,183 E 1346,631
2+48	8" 1/2" HB	N 583,171 E 1346,623
2+90	8"x8" TEE	N 583,153 E 1346,602
3+50	8" 1/2" HB	N 583,129 E 1346,556
3+92	8" 2" HDG	N 583,120 E 1346,998
4+02	8" 2" HDG	N 583,111 E 1347,007
4+21	8" 2" HDG	N 583,109 E 1347,031
4+84	8" HDG (VERT)	(SEE PROFILE SHEET 4)

- NOTES:
- ALL SHC'S SHOWN SERVING NUMBERED LOTS ARE 4".
 - ALL SEWER MAINS WILL BE 8" PVC (SDR 35) OR DIP (CLASS 54). SEE PROFILE SHEET 4 FOR THE LIMITS OF EACH.
 - ALL MANHOLES WILL BE STANDARD 4'-0" (6 5/12).
 - OUTSIDE METERS WILL BE PER HOWARD CO. DETAIL H 3.32 FOR THIN CONNECTIONS AND DETAIL H 3.28 FOR SINGLE CONNECTIONS.
 - ALL MHC'S SERVING NUMBERED LOTS ARE 1 1/2" WITH A 1" METER OUTSIDE SETTINGS. ALL MHC'S SHOWN ARE PROPOSED UNLESS OTHERWISE NOTED.
 - WATER MAIN IS 8" C900 PVC (DR-18) UNLESS OTHERWISE NOTED.
 - EXISTING VALVE TO BE CLOSED BY DPM FOR CONSTRUCTION.
 - THE WATER HOUSE CONNECTIONS FOR FUTURE LOTS IN NON-BUILDABLE BULK PARCEL F ARE PROPOSED UNDER THIS CONTRACT, BUT ARE TYING INTO THE EXISTING 8" M CONSTRUCTED UNDER CONT. 24-4871-D.
 - FOR SEWER HOUSE CONNECTION INVERT ELEVATIONS FROM THE MAIN TO THE FUTURE DWELLINGS (M.C.E.), SEE SHEET 5.

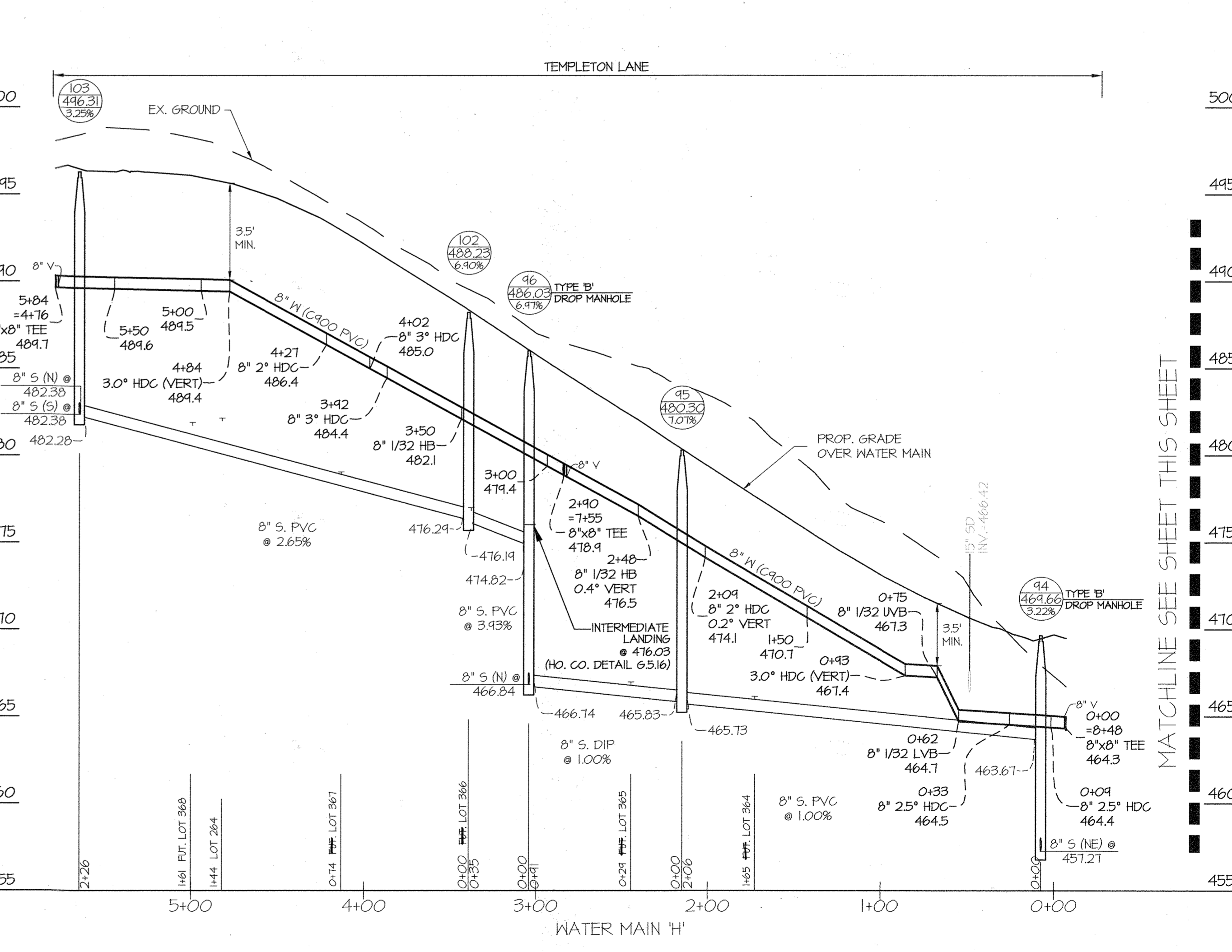
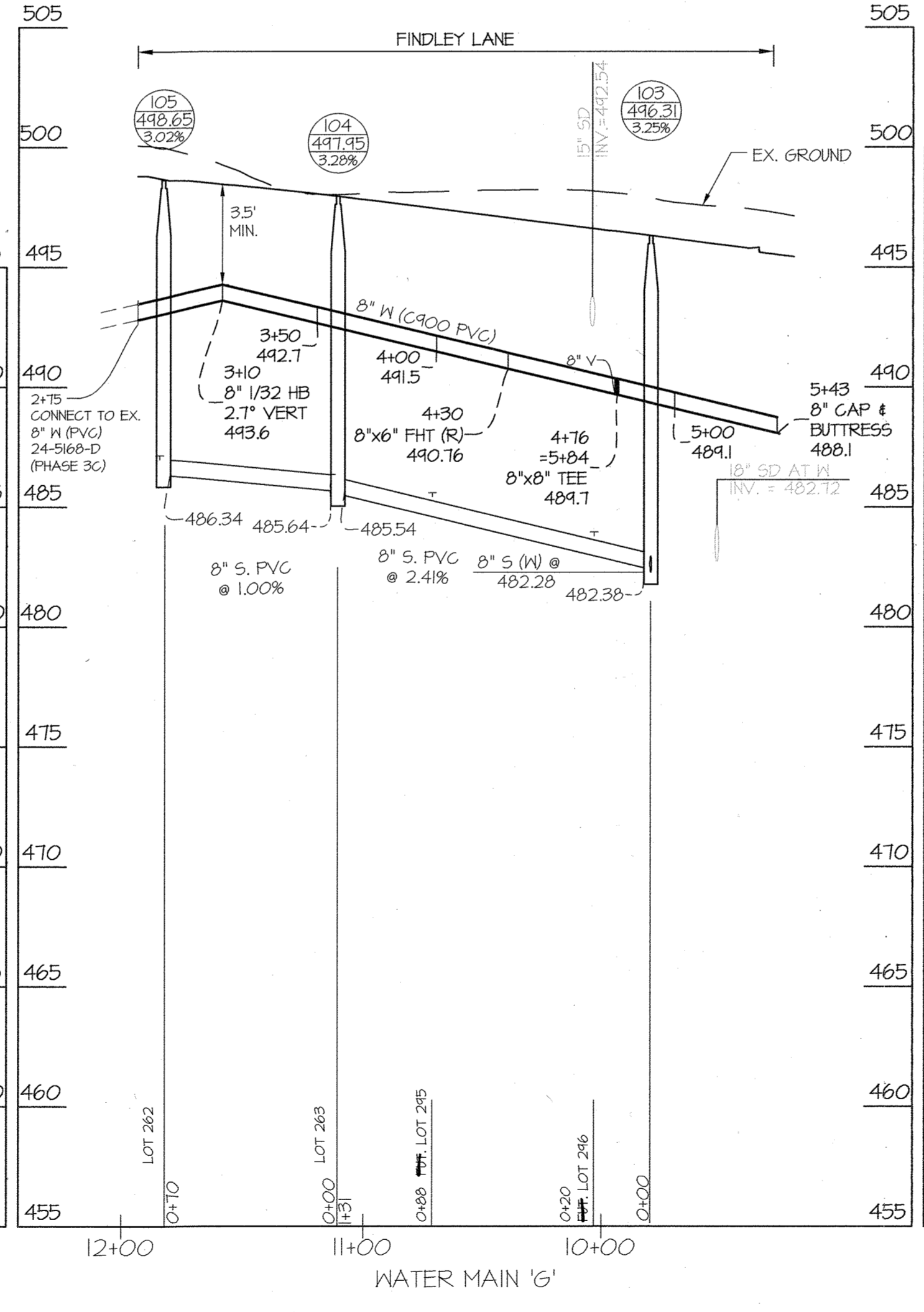
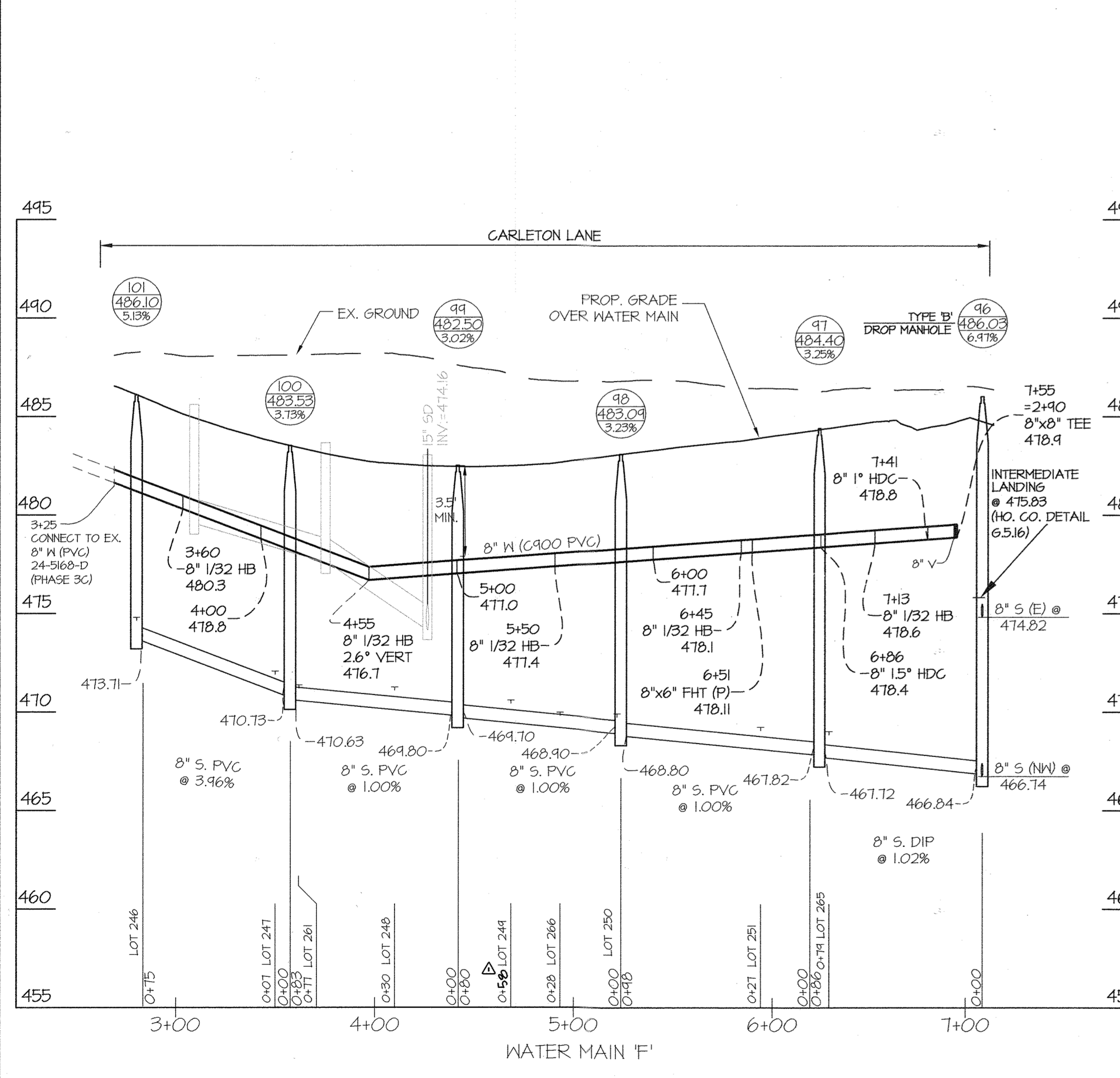
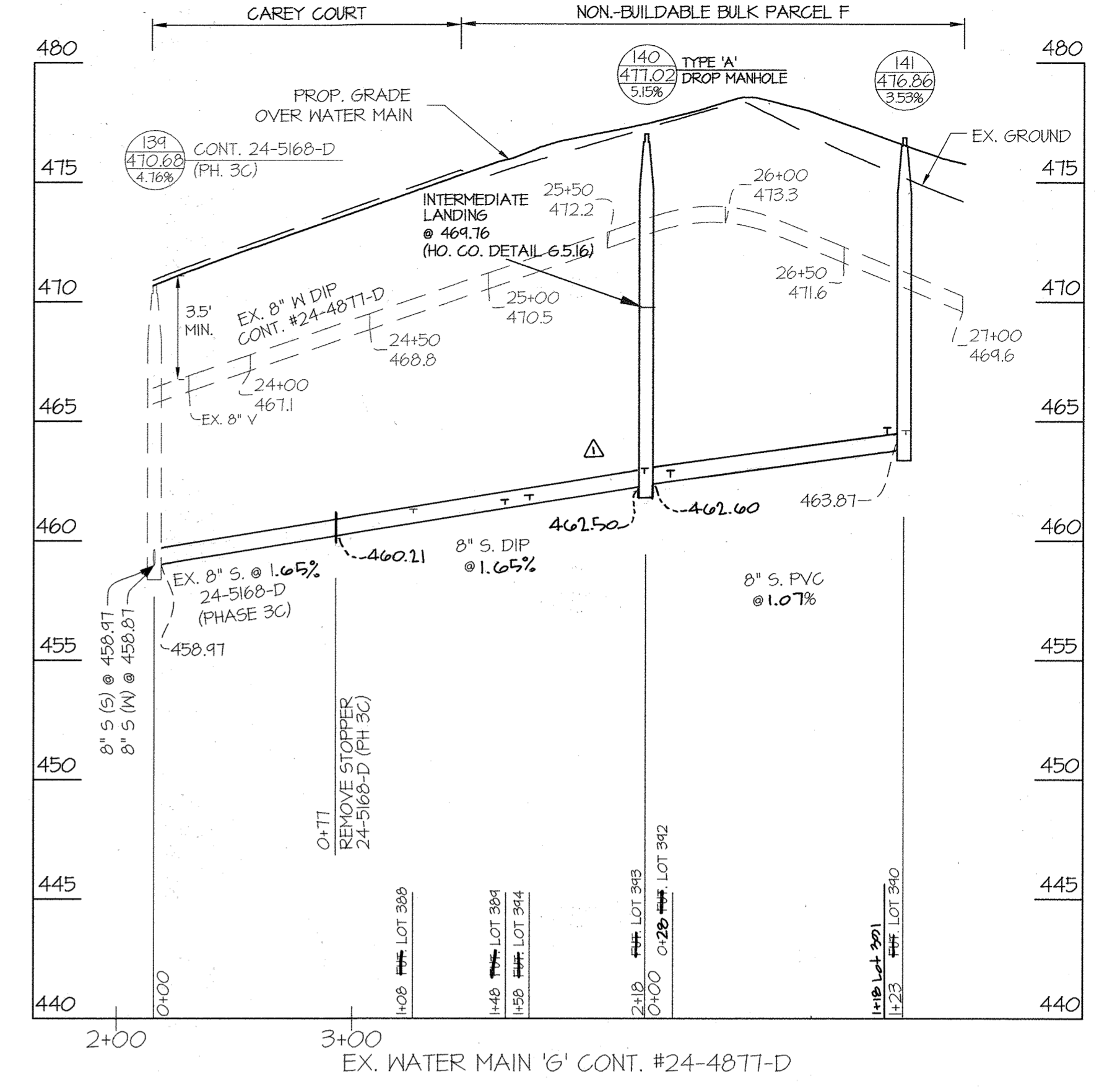


NOTE: LOTS SHOWN WITH AN ASTERISK (*) INDICATES LOTS ASSOCIATED WITH F17-001, BUT ARE NOT IN THIS CONTRACT. LOTS SHOWN AS "FUTURE" ARE PART OF F21-032.

DEPARTMENT OF PUBLIC WORKS HOWARD COUNTY, MARYLAND CHIEF, BUREAU OF UTILITIES	DEPARTMENT OF PLANNING AND ZONING HOWARD COUNTY, MARYLAND CHIEF, DEVELOPMENT ENGINEERING DIVISION	 PLANNING ENGINEERING SURVEYING 3909 NATIONAL DRIVE SUITE 250 BURTONSVILLE, MD 20866 GLWPA.COM PHONE: 301-421-4024 BALT: 410-880-1820 DC/VA: 301-989-2524 FAX: 301-421-4188	DESIGNED BY: JRD DRAWN BY: AWL CHECKED BY: DEV	DATE: FEB., 2021 G.L.W. No. 13013	PROFESSIONAL CERTIFICATION I HEREBY CERTIFY THAT THESE PLANS WERE PREPARED OR APPROVED BY ME, AND THAT I AM A DULY LICENSED PROFESSIONAL ENGINEER UNDER THE LAWS OF THE STATE OF MARYLAND, LICENSE NO. 12975 EXP. DATE: MAY 26, 2022	 DATE: 2/17/21	WATER and SEWER PLAN 600' SCALE MAP NO. 23 BLOCK NO. 6 & 12	WESTMOUNT CONTRACT No. 24-5169-D PHASE 3D LOTS 246-257, 261-266, OPENS SPACE LOTS 291-293 AND FUTURE LOTS 295, 296, 347-354, 364-368, & 388-394 HOWARD COUNTY, MARYLAND ELECTION DISTRICT No. 2	SCALE: 1"=50' SHEET: 3 OF 5
			L & CADD DRAWINGS 13013 PLANS BY: GLW (S) FINALS PHASE 3 PHASE 3D 13013-PH3D-FINALS-MS-PLAN (DWG)		DATE: 2/17/21	DATE: 2/17/21	DATE: 2/17/21		



- NOTES:
1. THE SYMBOL THAT REPRESENTS THE LOCATION OF A SEWER HOUSE CONNECTION IS SHOWN AT THE ELEVATION OF THE CONNECTION AT EITHER THE EDGE OF THE RIGHT-OF-WAY LINE OR EASEMENT LINE.
 2. FOR SEWER HOUSE CONNECTION INVERTS AT POINTS BETWEEN THE MAIN AND FUTURE DWELLING, SEE SHEET 5.
 3. FOR MINIMUM CELLAR ELEVATIONS (M.C.E.), SEE SHEET 5.
 4. OTHER THAN SEWER HOUSE CONNECTIONS AT MANHOLES, ALL CONNECTIONS WILL TIE INTO THE MAIN, MATCHING CENTERLINES.
 5. ALL D.I.P. WATER MAINS ARE CLASS 54 UNLESS OTHERWISE NOTED.
 6. ALL P.V.C. WATER MAINS ARE C900 DR-18 UNLESS OTHERWISE NOTED.
 7. ALL P.V.C. SEWER MAINS ARE SDR 35 UNLESS OTHERWISE NOTED.
 8. ALL D.I.P. SEWER MAINS ARE CLASS 54 UNLESS OTHERWISE NOTED. SEE PROFILES THIS SHEET FOR LIMITS OF D.I.P.



L:\CADD\DRAWINGS\13013\PLANS BY GLW\MS\FINAL\MS-FINALS-MS-PROFILES.dwg
 L:\CADD\DRAWINGS\13013\PLANS BY GLW\MS\FINAL\MS-FINALS-MS-PROFILES.dwg
 L:\CADD\DRAWINGS\13013\PLANS BY GLW\MS\FINAL\MS-FINALS-MS-PROFILES.dwg

DEPARTMENT OF PUBLIC WORKS HOWARD COUNTY, MARYLAND DATE: 2/17/2021		DEPARTMENT OF PLANNING AND ZONING HOWARD COUNTY, MARYLAND DATE: 2-19-21		GLW PLANNING ENGINEERING SURVEYING 3909 NATIONAL DRIVE SUITE 250 BURTONSVILLE, MD 20866 GLW.PA.COM PHONE: 301-421-4024 BALT: 410-880-1820 DC/VA: 301-989-2524 FAX: 301-421-4186		DESIGNED BY: JRD DRAWN BY: AWL CHECKED BY: DEV DATE: FEB., 2021 G.L.W. No. 13013		PROFESSIONAL CERTIFICATION I HEREBY CERTIFY THAT THESE PLANS WERE PREPARED OR APPROVED BY ME, AND THAT I AM A DULY LICENSED PROFESSIONAL ENGINEER UNDER THE LAWS OF THE STATE OF MARYLAND, LICENSE NO. 12375 EXP. DATE: MAY 26, 2022 		WESTMOUNT CONTRACT No. 24-5169-D PHASE 3D LOTS 246-257, 261-266, OPENS SPACE LOTS 291-293 AND FUTURE LOTS 295, 296, 347-354, 364-368, & 388-394 HOWARD COUNTY, MARYLAND ELECTION DISTRICT No. 2		SCALE 1"=50'(H) 1"=5'(V)
WATER and SEWER PROFILES 60' SCALE MAP NO. 23 BLOCK NO. 6 & 12						SHEET 4 OF 5						


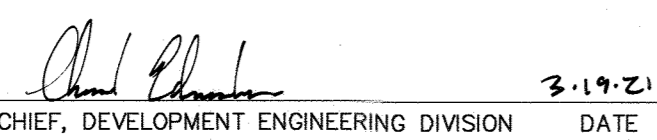

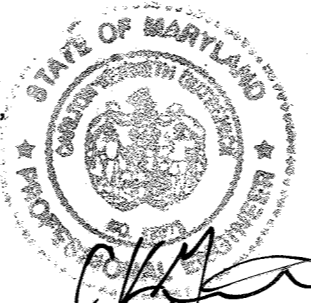
SEWER HOUSE CONNECTION INFORMATION AND MINIMUM CELLAR ELEVATIONS (M.C.E.)				
LOT	SLOPE OF SHC	INV. @ MAIN/MH	INV. @ R/W SEE NOTE 1	M.C.E. SEE NOTE 2
388	2.00%	460.21	461.13	460.73
389	2.00%	460.61	461.09	460.24
390	2.00%	464.20	464.44	460.04
391	2.00%	463.17	463.67	464.12
392	2.00%	461.93	462.43	460.60
393	2.00%	464.66	465.12	466.42
394	2.00%	460.71	460.83	465.13
246	2.00%	474.04	474.64	478.64
247	2.00%	471.26	471.94	475.10
248	2.00%	470.41	471.14	475.14
249	2.00%	469.74	470.42	474.62
250	2.00%	464.13	464.75	473.75
251	2.00%	469.40	469.00	473.10
252	2.00%	458.42	456.70	460.70
253	2.00%	455.82	455.84	454.94
254	2.00%	454.31	454.71	450.71
255	2.00%	454.12	454.44	450.64
256	2.00%	453.40	453.82	451.92
257	2.00%	453.00	453.34	451.44
261	2.00%	470.60	471.20	475.20
262	2.00%	489.61	486.94	491.14
263	2.00%	485.81	486.14	490.14
264	5.00%	480.34	481.94	484.24
265	5.00%	461.96	463.86	475.36
266	2.00%	469.44	469.14	473.71
345	2.00%	484.74	485.44	484.53
346	2.00%	483.15	483.74	481.84
347	1.50%	455.42	456.34	454.96
348	1.50%	455.34	455.82	454.41
349	5.00%	454.72	455.18	450.76
350	2.00%	454.25	454.91	450.81
351	2.00%	453.60	454.24	450.64
352	2.00%	451.53	450.13	441.13
353	2.00%	465.63	465.94	464.94
354	2.00%	466.43	466.83	471.13
355	2.00%	476.52	476.84	481.04
356	2.00%	478.53	478.84	482.84
357	5.00%	480.84	481.74	481.94

AS-BUILT INFORMATION					
LOT #	ADDRESS	WATER HOUSE CONNECTION AS BUILT		SEWER HOUSE CONNECTION AS BUILT	
		LOCATION DIM. 1	LOCATION DIM. 2	LOCATION DIM. 1	LOCATION DIM. 2
388	CAREY COURT				
389	CAREY COURT				
390	CAREY COURT				
391	CAREY COURT				
392	CAREY COURT				
393	CAREY COURT				
394	CAREY COURT				
246	CARLETON LANE				
247	CARLETON LANE				
248	CARLETON LANE				
249	CARLETON LANE				
250	CARLETON LANE				
251	CARLETON LANE				
252	WESTMOUNT PARKWAY				
253	WESTMOUNT PARKWAY				
254	WESTMOUNT PARKWAY				
255	WESTMOUNT PARKWAY				
256	WESTMOUNT PARKWAY				
257	WESTMOUNT PARKWAY				
261	CARLETON LANE				
262	FINDLEY LANE		(SEE CONTRACT 24-5160-D (PH. 3C))		
263	FINDLEY LANE				
264	FINDLEY LANE				
265	CARLETON LANE				
266	CARLETON LANE				
345	FINDLEY LANE				
346	FINDLEY LANE				
347	WESTMOUNT PARKWAY				
348	WESTMOUNT PARKWAY				
349	WESTMOUNT PARKWAY				
350	WESTMOUNT PARKWAY				
351	WESTMOUNT PARKWAY				(SEE CONTRACT 20-5161-D (PH. 3B))
352	WESTMOUNT PARKWAY				(SEE CONTRACT 20-5161-D (PH. 3B))
353	WESTMOUNT PARKWAY				
354	WESTMOUNT PARKWAY				
355	TEMPLETON LANE				
356	TEMPLETON LANE				
357	TEMPLETON LANE				
358	TEMPLETON LANE				

Lot	Inv. @ Main/MH	Slope of SHC	Inv. @ R/W see note 1	M.C.E. see note 2	F.F.E. see note 3	B.E. see note 4
388	460.87	2.00%	461.79	460.00	476.0	467.1
389	461.65	2.00%	462.09	460.23	480.0	471.2
390	464.10	2.00%	464.44	460.04	480.3	476.6
391	464.00	2.00%	464.10	461.90	481.7	473.0
392	463.05	2.00%	463.25	460.95	481.9	473.2
393	462.93	2.00%	463.25	461.05	482.2	472.5
394	461.71	2.00%	461.91	460.21	481.7	472.0
246	474.04	2.00%	474.64	478.64	490.6	480.0
247	471.16	2.00%	471.90	475.90	488.7	479.0
248	470.41	2.00%	471.09	475.10	486.6	476.0
249	469.63	2.00%	470.52	474.72	487.0	478.1
250	469.13	2.00%	469.75	473.75	487.0	478.2
251	468.40	2.00%	469.00	473.10	488.3	478.6
252	456.42	2.00%	456.78	460.78	473.4	463.4
253	455.52	2.00%	455.84	459.94	472.7	463.0
254	454.37	2.00%	454.71	458.71	472.1	462.4
255	454.12	2.00%	454.44	458.64	471.0	461.3
256	453.33	2.00%	453.83	457.93	473.0	463.3
257	452.80	2.00%	453.30	457.40	473.8	464.1
261	470.83	2.00%	471.20	475.10	490.0	480.3
262	486.67	2.00%	486.90	491.10	502.1	492.5
263	485.87	2.00%	486.10	490.10	502.1	492.5
264	480.30	5.00%	481.90	489.14	501.3	491.6
265	467.96	5.00%	468.86	475.36	489.3	478.6
266	469.40	2.00%	469.81	473.71	488.3	478.6
267	484.70	2.00%	485.43	489.53	500.2	491.1
268	483.15	2.00%	483.70	487.80	500.2	490.5
347	455.02	1.50%	456.30	459.90	471.4	461.7
348	455.34	1.50%	455.82	459.47	470.5	460.8
349	454.72	1.50%	455.18	458.70	469.8	460.1
350	453.97	2.00%	454.63	458.53	469.1	459.4
353	453.60	2.00%	454.24	458.64	470.5	460.8
354	457.33	2.00%	458.13	461.93	471.1	461.4
355	465.63	2.00%	466.90	469.90	481.0	473.2
356	466.43	2.00%	468.83	471.3	481.1	477.4
357	476.52	2.00%	478.84	481.04	493.7	484.0
358	480.84	5.00%	481.74	487.90	497.0	489.3

- Notes:
- This value is the invert of the SHC at either the edge of right-of-way or easement line.
 - It will be the responsibility of the engineer preparing the site development plan to ensure the final basement elevation is above the minimum cellar elevation (M.C.E.) shown in this table.
 - The first floor elevation (F.F.E.) is the elevation of the driveway at the right-of-way line plus an adjustment for the driveway and a single riser inside the garage.
 - The basement elevation (B.E.) is the first floor elevation minus 2.7'

L:\CADD\DRAWINGS\13013\PLANS BY: GLW\WSPINALS\PHASE 3\PHASE 301\3013-PH3D-FINALS-WS-PROFILES.dwg

DEPARTMENT OF PUBLIC WORKS HOWARD COUNTY, MARYLAND 	DEPARTMENT OF PLANNING AND ZONING HOWARD COUNTY, MARYLAND 	 PLANNING ENGINEERING SURVEYING 3809 NATIONAL DRIVE SUITE 250 BURTONSVILLE, MD 20866 GLWPA.COM PHONE: 301-421-4024 BALT: 410-880-1820 DC/VA: 301-988-2524 FAX: 301-421-4188	DESIGNED BY: JRD DRAWN BY: AWL CHECKED BY: DEV	DATE: FEB., 2021 G.L.W. No. 13013	PROFESSIONAL CERTIFICATION I HEREBY CERTIFY THAT THESE PLANS WERE PREPARED OR APPROVED BY ME, AND THAT I AM A DULY LICENSED PROFESSIONAL ENGINEER UNDER THE LAWS OF THE STATE OF MARYLAND, LICENSE NO. 12975 EXP. DATE: MAY 26, 2022 	REVISION: 12/21/21 Rev SHC chart per plan changes	SCALE: AS SHOWN SHEET: 5 OF 5
			DEPARTMENT OF PUBLIC WORKS HOWARD COUNTY, MARYLAND CHIEF, BUREAU OF UTILITIES		DEPARTMENT OF PLANNING AND ZONING HOWARD COUNTY, MARYLAND CHIEF, DEVELOPMENT ENGINEERING DIVISION		WESTMOUNT CONTRACT No. 24-5169-D PHASE 3D LOTS 246-257, 261-266, OPENS SPACE LOTS 291-293 AND PLOT LOTS 295, 296, 347-354, 364-368, & 388-394 HOWARD COUNTY, MARYLAND ELECTION DISTRICT No. 2