

GENERAL NOTES

PART I

- APPROXIMATE LOCATIONS OF EXISTING MAINS ARE SHOWN. THE CONTRACTOR SHALL TAKE ALL NECESSARY PRECAUTIONS TO PROTECT EXISTING MAINS AND SERVICES AND MAINTAIN UNINTERRUPTED SERVICE. ANY DAMAGE INCURRED SHALL BE REPAIRED IMMEDIATELY TO THE SATISFACTION OF THE ENGINEER AT THE CONTRACTOR'S EXPENSE.
 - THE EXISTING TOPOGRAPHY SHOWN HEREON IS TAKEN FROM AN AERIAL TOPOGRAPHIC SURVEY PREPARED BY POTOMAC AERIAL SURVEYS INC., DECEMBER 21, 2017 AND SUPPLEMENTED BY FIELD SURVEYS PREPARED BY VOGEL ENGINEERING+TIMMONS GROUP DATED MARCH 2013, FEB/MARCH 2014 AND FEB/MARCH/JUNE 2018.
 - THE COORDINATES SHOWN ON THE DRAWINGS ARE BASED ON MARYLAND STATE REFERENCE SYSTEM NAD '83/91 AS PROJECTED BY HOWARD COUNTY GEODETIC CONTROL STATIONS 16E1 AND 16H3.
- ALL VERTICAL CONTROLS ARE BASED ON NAVD '88. VERTICAL CONTROLS PROVIDED ON DRAWINGS ARE:
- GEODETIC SURVEY CONTROL 16E1 (N 593250.96 E 1340192.70) BRASS DISC SET ON TOP OF A CONCRETE MONUMENT.
 - GEODETIC SURVEY CONTROL 16H3 (N 592408.04 E 1341523.97) BRASS DISC SET ON TOP OF A CONCRETE MONUMENT.
- ALL PIPE ELEVATIONS SHOWN ARE INVERT ELEVATIONS UNLESS OTHERWISE NOTED. CLEAR ALL UTILITIES BY A MINIMUM OF 12 INCHES. CLEAR ALL POLES BY 5'-0" MINIMUM OR TUNNEL AS REQUIRED UNLESS OTHERWISE NOTED. THE OWNER HAS CONTACTED THE UTILITY COMPANIES AND HAS MADE ARRANGEMENTS FOR BRACING OF POLES AS SHOWN ON DRAWINGS. IN THE EVENT THE CONTRACTOR'S WORK REQUIRES THE BRACING OF ADDITIONAL POLES, ANY COST INCURRED BY THE OWNER FOR BRACING OF ADDITIONAL POLES OR DAMAGES SHALL BE DEDUCTED FROM MONIES OWED THE CONTRACTOR. THE CONTRACTOR SHALL COORDINATE WITH THE UTILITY COMPANIES TO SCHEDULE THE BRACING OF THE POLES.
 - FOR DETAILS NOT SHOWN ON THE DRAWINGS, AND FOR MATERIALS AND CONSTRUCTION METHODS USE, HOWARD COUNTY DESIGN MANUAL, VOLUME IV, STANDARD SPECIFICATIONS AND DETAILS FOR CONSTRUCTION (LATEST EDITION). THE CONTRACTOR SHALL HAVE A COPY OF VOLUME IV ON THE JOB.
 - WHERE TEST PITS HAVE BEEN MADE ON EXISTING UTILITIES, THEY ARE NOTED BY THE SYMBOL AT THE LOCATION OF THE TEST PIT. A NOTE OR NOTES CONTAINING THE RESULTS OF THE TEST PIT OR PITS IS INCLUDED ON THE DRAWINGS. EXISTING UTILITIES IN THE VICINITY OF THE PROPOSED WORK FOR WHICH TEST PITS HAVE NOT BEEN DUG SHALL BE LOCATED BY THE CONTRACTOR TWO WEEKS IN ADVANCE OF CONSTRUCTION OPERATION AT HIS OWN EXPENSE.
 - THE CONTRACTOR SHALL NOTIFY THE FOLLOWING UTILITY COMPANIES OR AGENCIES AT LEAST FIVE WORKING DAYS BEFORE STARTING WORK SHOWN ON THESE PLANS:

PART II - WATER

- ALL WATER MAINS SHALL BE C900 PVC (DR-14) UNLESS OTHERWISE NOTED.
- TOPS OF ALL WATER MAINS SHALL HAVE A MINIMUM OF 3'-6" OF COVER UNLESS OTHERWISE NOTED.
- VALVES ADJACENT TO TEES SHALL BE STRAPPED TO TEES.
- ALL FITTINGS SHALL BE BUTTRESSED CONCRETE IN ACCORDANCE WITH STANDARD DETAILS UNLESS OTHERWISE PROVIDED FOR ON THE DRAWINGS.
- FIRE HYDRANTS SHALL BE SET TO THE BURY LINE ELEVATIONS SHOWN ON THE DRAWINGS. ALL FIRE HYDRANTS SHALL BE INSTALLED WITH STANDARD DETAILS. THE SOIL AROUND THE FIRE HYDRANT SHALL BE COMPACTED IN ACCORDANCE WITH SECTION 1000 AND SECTION 1005 OF THE STANDARD SPECIFICATIONS.
- THE CONTRACTOR SHALL NOT OPERATE ANY WATER MAIN VALVES ON THE EXISTING WATER SYSTEM.
- TRACER WIRE AND CONTINUITY TEST STATIONS SHALL BE INSTALLED ON ALL DIP AND PVC WATER MAINS IN ACCORDANCE WITH THE HOWARD COUNTY DESIGN MANUAL.
- FOR PVC WATER MAINS, ALL RECORDS FOR THE QUALITY CONTROL AND QUALIFICATION TEST REQUIREMENTS NOTED IN SECTION 5.1 OF THE AWWA STANDARD C900 FOR PVC PRESSURE PIPE SHALL BE SUBMITTED WITH THE PIPE MATERIAL CERTIFICATIONS OR SHOP DRAWINGS PRIOR TO APPROVAL OF THE MATERIAL FOR USE. THE TEST RECORDS SHALL BE FOR THE PIPE TO BE INSTALLED UNDER THIS CONTRACT. ALL PVC PIPE SHALL CONTAIN MARKINGS TO ALLOW CROSS REFERENCING OF THE PIPE SUPPLIED TO THE TEST RECORDS RECEIVED.
- UNLESS OTHERWISE NOTED ON THE PLANS OR IN THE SPECIFICATIONS, SACRIFICIAL ANODES SHALL BE INSTALLED ON ALL VALVES AND METALLIC FITTINGS USED WITH PVC WATER MAINS IN ACCORDANCE WITH VOLUME IV, STANDARD SPECIFICATIONS AND DETAILS FOR CONSTRUCTION. SEVENTEEN (17) POUND MAGNESIUM ANODES SHALL BE INSTALLED ON ALL VALVES AND DUCTILE IRON FITTINGS INCLUDING RESTRAINTS AND HARNESSES. TWO (2) POUND ZINC ANODES SHALL BE INSTALLED ON ALL STAINLESS STEEL FITTINGS AND SADDLES USED WITH PVC MAINS. ALL "TEES" USED WITH PVC MAINS SHALL BE DUCTILE IRON.
- PROPER ASSEMBLY OF GASKETED PVC PIPE JOINTS: THE MANUFACTURER'S INSERTION LINE OF GASKETED PVC PIPE JOINTS INDICATES THE MAXIMUM DEPTH OF INSERTION OF THE BELL. AFTER ASSEMBLY OF THE JOINT, THE INSERTION LINE SHALL REMAIN VISIBLE. DUAL INSERTION LINES ON GASKETED PVC PIPE INDICATE THE MAXIMUM AND MINIMUM DEPTH OF INSERTION OF THE SPIGOT INTO THE BELL. THE CONTRACTOR SHALL NOT OVER INSERT OR OVER HOME THE SPIGOT INTO THE BELL OF PVC PIPE.
- ALL CHANGES IN HORIZONTAL OR VERTICAL DIRECTION OF PVC WATER PIPE SHALL BE MADE WITH STANDARD BENDS, 5-DEGREE COUPLINGS OR HIGH DEFLECTION COUPLINGS. NO BENDING OF THE PIPE OR DEFLECTING OF PVC PIPE JOINTS IS PERMITTED, WHERE HIGH DEFLECTION COUPLINGS OR 5-DEGREE SWEEPS ARE PERMITTED, THE CONTRACTOR SHALL PROVIDE ONE FULL PIPE LENGTH (20-FOOT LONG) ON EITHER SIDE OF THE HIGH DEFLECTION COUPLING OR 5-DEGREE SWEEP. THE CONTRACTOR SHALL USE A VIBRATORY PLATE COMPACTOR OR OTHER APPROVED MEANS TO THOROUGHLY COMPACT THE SOIL ON BOTH SIDES OF THE HIGH DEFLECTION COUPLING OR 5-DEGREE SWEEP, TAKING CARE NOT TO USE COMPACTOR EQUIPMENT DIRECTLY OVER THE FITTING.
- PVC HIGH DEFLECTION COUPLINGS SHALL BE LIMITED TO A TOTAL DEFLECTION OF 3-DEGREES 1-1/2-DEGREE ON EITHER END OF THE COUPLING), SHALL BE RATED FOR A MINIMUM 200 PSI MEETING THE REQUIREMENTS OF AWWA C900, SHALL HAVE A MINIMUM LENGTH OF 9-INCHES AND SHALL HAVE CENTER STOPS. PVC HIGH DEFLECTION COUPLINGS SHALL BE CERTIFIED PVC HIGH DEFLECTION (HD) STOP COUPLINGS OR EQUAL. FIVE DEGREE SWEEPS SHALL BE BELL BY SPIGOT, RATED FOR A MINIMUM 225 PSI, DR18 MEETING THE REQUIREMENTS OF AWWA C900 AND SHALL BE MULTI FITTINGS (PEX) BLUE BRUTE DR18 OR EQUAL.
- WHEN PVC HIGH DEFLECTION COUPLINGS OR PVC 5-DEGREE SWEEPS ARE USED TO FACILITATE CHANGES IN HORIZONTAL OR VERTICAL ALIGNMENTS OF AWWA C-900 PVC PIPELINES, THE CONTRACTOR SHALL INSTALL DEVICES FOR THE PREVENTION OF OVER-INSERTION OF THE PVC PIPE SPIGOTS OR PLAIN ENDS INTO THE PUSH ON BELL JOINT ON BOTH SIDES OF THE HIGH DEFLECTION COUPLINGS AND 5 DEGREE SWEEPS. BELL STOPS SHALL BE PLACED AT THE PROPER INSERTION LINE FOR THE FITTING. THE BELL STOP SHALL BE MANUFACTURED OF DUCTILE IRON AND INCORPORATE AN EXPANSION RETENTION SPRING TO ALLOW FOR PIPE EXPANSION AND CONTRACTION. THE BELL STOPS SHALL BE SERIES 5000 MEGA-STOP, AS MANUFACTURED BY EBAA IRON INC. OR APPROVED EQUAL.
- SPRINKLER SYSTEM FOR SINGLE RESIDENTIAL DWELLING UNITS SHALL HAVE WATER HOUSE CONNECTIONS AND WATER METERS THAT ARE SIZED IN ACCORDANCE WITH THE DESIGN OF THE SPRINKLER SYSTEMS. SPRINKLER SYSTEMS FOR SINGLE RESIDENTIAL DWELLINGS SHALL HAVE A MINIMUM OF 1.5" SERVICE CONNECTION WITH A 1" OUTSIDE METER SETTING.

FINAL WATER AND SEWER CONSTRUCTION PLAN CHAPEL GATE WOODS-PHASE 1

LOTS 1-43, 88-118, 120-134, OPEN SPACE LOTS 135-137,
PARCEL A AND NON-BUILDABLE PARCELS B & C

CONTRACT 24-5123-D
HOWARD COUNTY, MARYLAND



VICINITY MAP
SCALE: 1"=600'

WATER ZONE: 730
TEST GRADIENT: 1007
TEST PRESSURE: 247.23 PSI

Type of Building :	RESIDENTIAL
No. of Lots/Parcels :	89 SFA
No. of single Water House Connections :	32
No. of Twin Water House Connections :	28+2*
No. of Sewer House Connections :	89
No. of Twin Sewer House Connections :	0
Sewer Shed :	RT 108
Treatment Plant :	LITTLE PATUXENT WATER RECLAMATION PLANT

*THERE ARE 2 ADDITIONAL 1" W/M FOR 3/4" OUTSIDE METER SETTINGS FOR IRRIGATION SYSTEM AT ENTRANCE MONUMENT AND PROJECT PAVILION.

PART III - SEWER

- ALL SEWER MAINS SHALL BE D.I.P. OR P.V.C UNLESS OTHERWISE NOTED.
- ALL MANHOLES SHALL BE 4'-0" INSIDE DIAMETER UNLESS OTHERWISE NOTED.
- FORCE MAINS SHALL BE D.I.P. ONLY.
- MANHOLES SHOWN WITH 12" AND 16" WALLS ARE FOR BRICK MANHOLES ONLY.
- MANHOLES DESIGNATED W.T. IN PLAN AND PROFILE SHALL HAVE WATERTIGHT FRAME AND COVERS, STANDARD DETAIL G5.52, WHERE WATERTIGHT FRAME AND COVER IS USED, SET TOP OF FRAME 1'-6" ABOVE FINISHED GRADE UNLESS OTHERWISE NOTED ON THE DRAWINGS.
- HOUSE(S) WITH THE SYMBOL "C.N.S." INDICATES THAT CELLAR CANNOT BE SERVED.

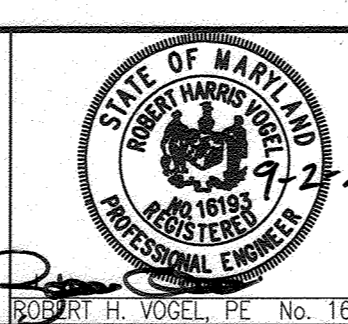
SEDIMENT CONTROL MEASURES WILL BE IMPLEMENTED IN ACCORDANCE WITH SECTION 308 OF THE SPECIFICATIONS AND WITH SITE DEVELOPMENT PLAN F-21-011.

THIS DEVELOPMENT IS APPROVED FOR SOIL EROSION AND SEDIMENT CONTROL BY THE HOWARD SOIL CONSERVATION DISTRICT.

Howard Bratchie 09/27/21
SOIL CONSERVATION DISTRICT DATE

DEPARTMENT OF PUBLIC WORKS HOWARD COUNTY, MARYLAND
DEPARTMENT OF PLANNING & ZONING HOWARD COUNTY, MARYLAND
Chad 9-15-21
CHIEF, BUREAU OF UTILITIES DATE
Chad
CHIEF, DEVELOPMENT ENGINEERING DIVISION DATE

VOGEL ENGINEERING
TIMMONS GROUP
3300 NORTH RIDGE ROAD, SUITE 110, ELLICOTT CITY, MD 21043
P: 410-461-7666 F: 410-461-8961 www.timmons.com



PROFESSIONAL CERTIFICATE
I HEREBY CERTIFY THAT THESE DOCUMENTS WERE PREPARED OR APPROVED BY ME, AND THAT I AM A DULY LICENSED PROFESSIONAL ENGINEER UNDER THE LAWS OF THE STATE OF MARYLAND, LICENSE NO. 16193, EXPIRATION DATE: 09-27-2022.
DRN: KG DES: KG
CHK: RRV
DATE: SEPTEMBER 2021

NO.	REVISION	DATE
WRA 6	AS-BUILT	10-13-2023
VTG 5	REVISE TO RELOCATE WATER MAIN #1, #2, AND A PORTION OF C AND SEWER MANHOLES 6-10, 36-39, 228 AND 23-27 FROM PUSE 2 (24-SIG-0) TO PUSE 1 (21-SIG-0)	08-15-2023
VTG 4	REVISE TO RELOCATE WATER MAINS #1 AND #2 AND SEWER MAINS 388-390 TO CHAPEL GATE WOODS-PHASE 2, CONTRACT 24-5165-D	04-17-2023
VTG 3	REVISE WATER TIE-IN LOCATION AT INTERSECTION OF STARLIGHT PLACE AND PRESBYTERIAN CHURCH DRIVEWAY	12-14-2022
VTG 2	REVISE LOCATION OF FIRE HYDRANT #4	09-23-2022
VTG 1	REVISE SITE LAYOUT, W/M AND S/M INVERTS	09-25-2022

FINAL WATER AND SEWER CONSTRUCTION PLAN
CONTRACT 24-5123-D
COVER SHEET

CHAPEL GATE WOODS-PHASE 1
LOTS 1-43, 88-118, 120-134, AND OPEN SPACE LOTS 135-137,
PARCEL A AND NON-BUILDABLE PARCELS B & C

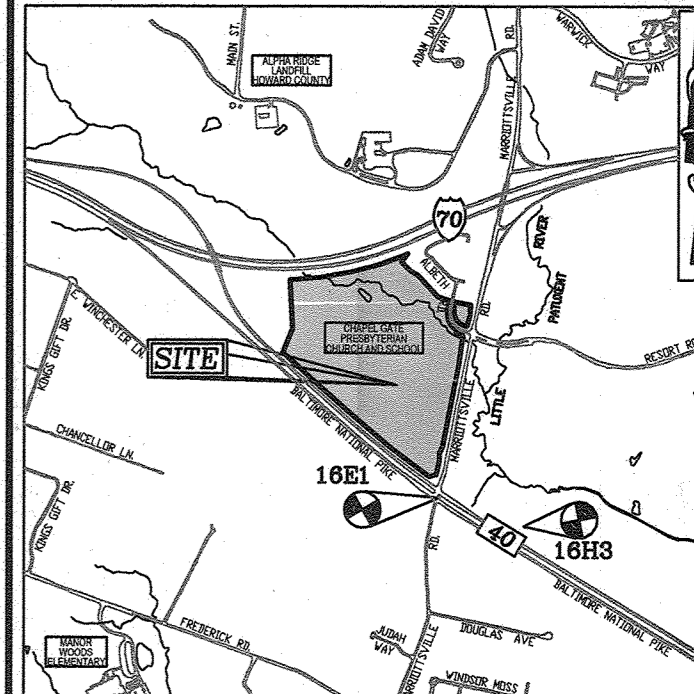
TAX MAP 16 GRID 10
TAX MAP 16 GRID 10
3RD ELECTION DISTRICT

ZONED: CEF-M
ZONED: CEF-M

PARCEL 110
ELLICOTT CITY, MD 21041
410-465-4244
SDCPROPERTIES.COM

SCALE AS SHOWN
SHEET 1 OF 7

BENCHMARKS
HOWARD COUNTY BENCHMARK 16E1 (CONC. MON.)
N 593250.96 E 1340192.70 ELEV. 463.89
LOCATION: ISLE AT CORNER RT-40 & MARRIOTTSVILLE ROAD
HOWARD COUNTY BENCHMARK 16H3 (CONC. MON.)
N 592408.04 E 1341523.97 ELEV. 469.71
LOCATION: RT-40, 0.45 MILES WEST OF TURF VALLEY ROAD



LOCATION MAP
SCALE: 1"=2000'
ADC MAP; PAGE: 19 BLOCK: B3, B4, C3 & C4

LEGEND

- EXISTING TREELINE
- PROPOSED TREELINE
- EXISTING WATER MAIN
- PROPOSED WATER MAIN
- FIRE HYDRANT
- PROPOSED VALVE
- PROPOSED TEE
- PROPOSED STORM DRAIN
- PROPOSED SEWER MAIN
- EXISTING STORM DRAIN
- EXISTING SEWER
- SEWER MANHOLE
- PRIVATE WATER HOUSE CONNECTION
- PRIVATE SEWER HOUSE CONNECTION
- PROPOSED SIGN
- PROPOSED LIGHT
- ROW LINE
- PROPERTY LINE

SHEET INDEX

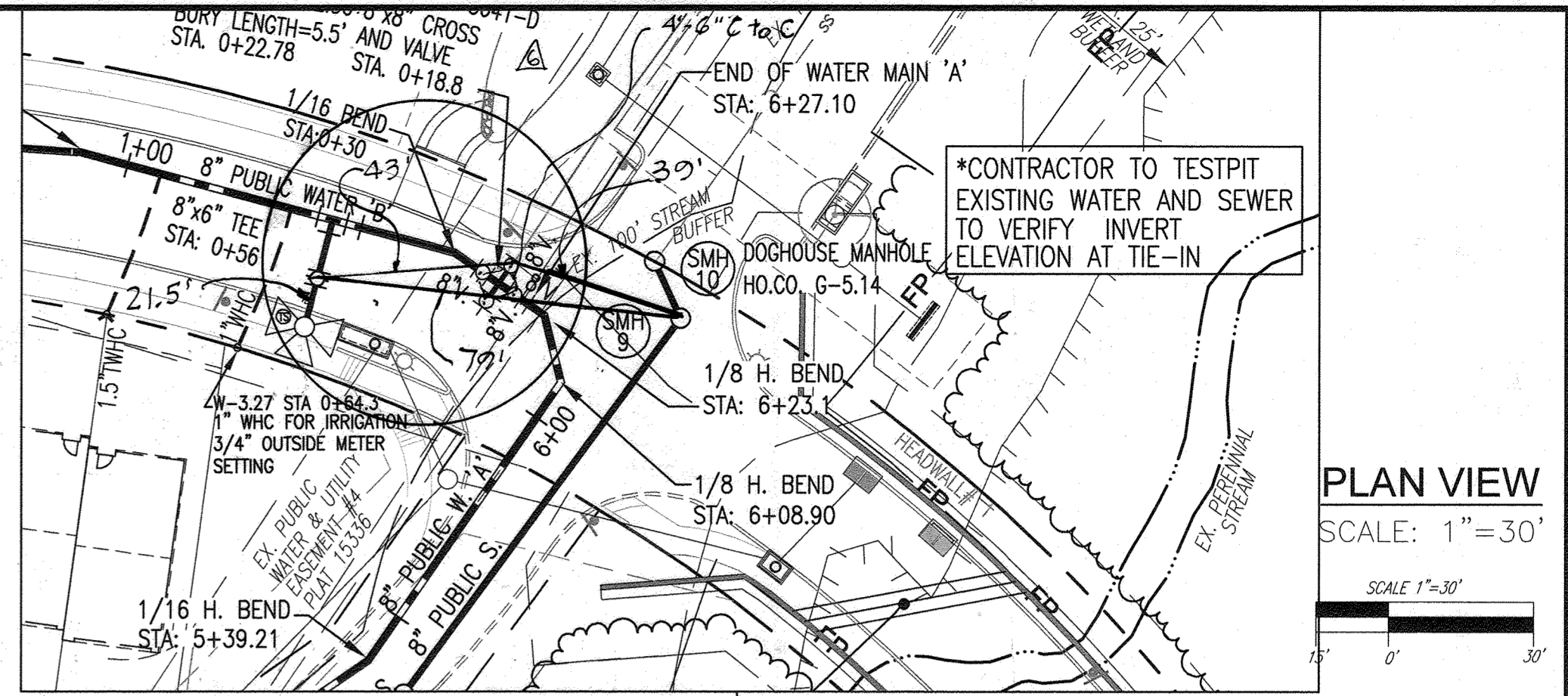
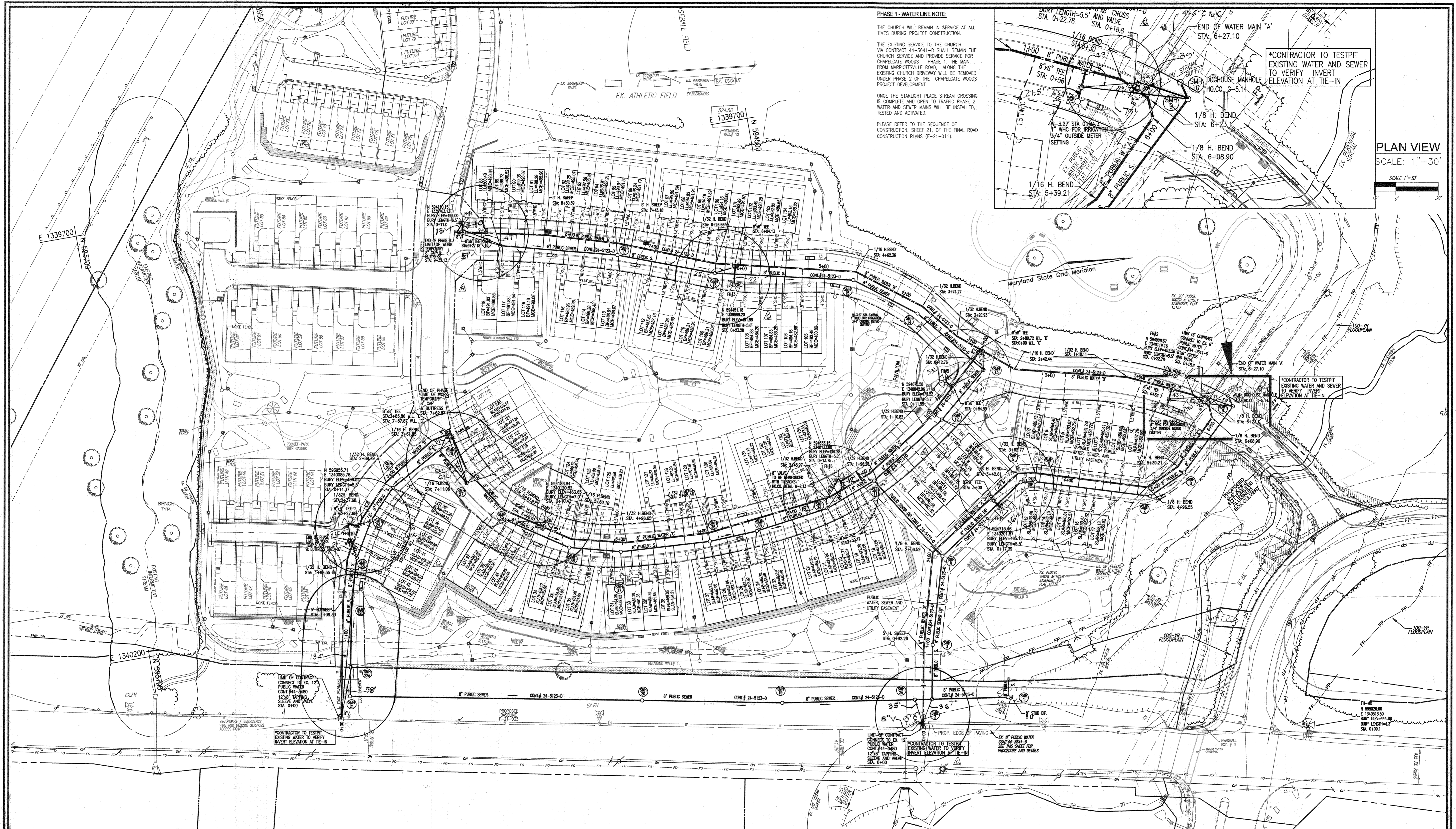
DESCRIPTION	SHEET NO.
COVER SHEET & LOCATION MAP	1 OF 7
LAYOUT PLAN	2 OF 7
WATER PROFILES	3-4 OF 7
SEWER PROFILES	5 OF 7
SEWER PROFILES	6 OF 7
EXISTING CONDITION AND DEMOLITION PLAN	7 OF 7

QUANTITIES - PHASE 1

NAME OF UTILITY CONTRACTOR : W.J. DELAUTER & SONS INC.
SURVEY AND DRAFTING DIVISION AS-BUILT DATE :

ITEMS	QUANTITIES ESTIMATED	AS-BUILT		
		QUANTITIES	TYPE	MANUFACTURER/SUPPLIER
WATER				
8" WATER C-900 PVC (DR-14)	2,708 LF	2,708 LF	DR-18	JM EAGLE / LB WATER
8" WATER (DR)	125 LF	125 LF	CL 54	TYTON JOINT / LB WATER
12" X 8" TAPPING SLEEVE & VALVE	2 EA	SLEEVE 2,350 C.M.J.	2,350 CMJ	AMERICAN FLOW / LB WATER
8" X 8" CROSS	1 EA	3	MJ	STAR PIPE / LB WATER
8" X 8" TEE	3 EA	3	MJ	STAR PIPE / LB WATER
8" VALVE	10 EA	10	2500 RW	AMERICAN FLOW / LB WATER
6" VALVE	8 EA	8	2500 RW	AMERICAN FLOW / LB WATER
FIRE HYDRANT	8	8	MJ	AMERICAN PARLIN G / LB WATER
8" CAP AND BUTTRESS	3 EA	3	MJ	STAR PIPE / LB WATER
5" H. SWEEP	4 EA	4	BLUE BRIDGE	MULTI FITTINGS / LB WATER
1/8" H. BEND	5 EA	5	MJ	STAR PIPE / LB WATER
1/16" H. BEND	8 EA	8	MJ	STAR PIPE / LB WATER
1/32" H. BEND	14 EA	14	MJ	STAR PIPE / LB WATER
1 1/2" WHC	1,570 LF	1,570 LF	K COPPER	CAMBRIDGE LEE / LB WATER
1" WATER METER VALVE	60 EA	60	CONCRETE	MOHSE CONCRETE / LB WATER
3/4" WATER METER VALVE	2 EA	2	CONCRETE	MOHSE CONCRETE / LB WATER
SEWER				
MANHOLE	35 EA	35	CPC	CPC
8" SEWER PVC-SDR 35	1,973 LF	1,973	SDR-35	JM EAGLE / LB WATER
8" SEWER DIP	566 LF	566	CL 52	TYTON JOINT / LB WATER
1" SMC	1,877 LF	1,877	SDR-26	JM EAGLE / LB WATER
SEWER CLEANOUT	87 EA	87		CAP/BL FUNDARY / LB WATER

*FROM HOWARD COUNTY DESIGN MANUAL VOLUME II-SECTION 4.3, TABLE 4.3D.



PHASE 1 - WATER LINE NOTE:
 THE CHURCH WILL REMAIN IN SERVICE AT ALL TIMES DURING PROJECT CONSTRUCTION.
 THE EXISTING SERVICE TO THE CHURCH VIA CONTRACT 44-3641-D SHALL REMAIN THE CHURCH SERVICE AND PROVIDE SERVICE FOR CHAPEL GATE WOODS - PHASE 1. THE MAIN FROM MARRIOTTVILLE ROAD, ALONG THE EXISTING CHURCH DRIVEWAY WILL BE REMOVED UNDER PHASE 2 OF THE CHAPEL GATE WOODS PROJECT DEVELOPMENT.
 ONCE THE STARLIGHT PLACE STREAM CROSSING IS COMPLETE AND OPEN TO TRAFFIC PHASE 2 WATER AND SEWER MAINS WILL BE INSTALLED, TESTED AND ACTIVATED.
 PLEASE REFER TO THE SEQUENCE OF CONSTRUCTION, SHEET 21, OF THE FINAL ROAD CONSTRUCTION PLANS (F-21-011).

PLAN VIEW
 SCALE: 1"=30'

SCALE 1"=50'
PLAN VIEW
 SCALE: 1"=50'

NOTE:
 EXISTING CONTRACT 44-3641-D TO REMAIN FOR THIS CONTRACT TO BE PLACED IN-SERVICE.

OWNER
 CHAPEL GATE PRESBYTERIAN CHURCH, INC.
 2600 MARRIOTTVILLE RD.
 MARRIOTTVILLE, MD 21104
 (410) 442-5888

DEVELOPER
 SECURITY DEVELOPMENT
 8480 BALTIMORE NATIONAL PIKE
 SUITE 415
 ELLICOTT CITY, MD 21041
 410-465-4244
 SDOPROPERTIES.COM

DEPARTMENT OF PUBLIC WORKS
 HOWARD COUNTY, MARYLAND

DEPARTMENT OF PLANNING & ZONING
 HOWARD COUNTY, MARYLAND

9/17/2023
 DATE

9/14/23
 DATE

VOGEL ENGINEERING
 TIMMONS GROUP
 3300 NORTH RIDGE ROAD, SUITE 110, ELLICOTT CITY, MD 21043
 P: 410.461.7666 F: 410.461.8961 www.timmons.com

STATE OF MARYLAND
 PROFESSIONAL ENGINEER
 ROBERT H. VOGEL, PE No. 16193

NO.	DESCRIPTION	DATE
1	ISSUE FOR PERMIT	08-15-2023
2	REVISE TO RELOCATE WATER MAIN 'A', 'D', AND 'E' FROM PHASE 2 (24-5165-D) TO PHASE 1 (24-5123-D)	08-15-2023
3	REVISE TO RELOCATE WATER MAINS 'A' AND 'D' AND SEWER MAINS 'SM16' THROUGH 'SM110' TO CHAPEL GATE WOODS - PHASE 2, CONTRACT 24-5165-D	04-17-2023
4	REVISE WATER TIE-IN LOCATION AT INTERSECTION OF STARLIGHT PLACE AND PRESBYTERIAN CHURCH DRIVEWAY	12-14-2022
5	REVISE LOCATION OF FIRE HYDRANT #4	09-23-2022
6	REVISE SITE LAYOUT, WHC AND SHC INVERTS.	03-25-2022

DATE: JULY 2023

FINAL WATER AND SEWER CONSTRUCTION PLAN
CONTRACT 24-5123-D
LAYOUT SHEET

600' SCALE MAP NO. 16 BLOCK NO. 10

CHAPEL GATE WOODS-PHASE 1
 LOTS 1-43, 88-118, 120-134, AND OPEN SPACE LOTS 135-137, PARCEL A AND NON-BUILDABLE PARCELS B & C

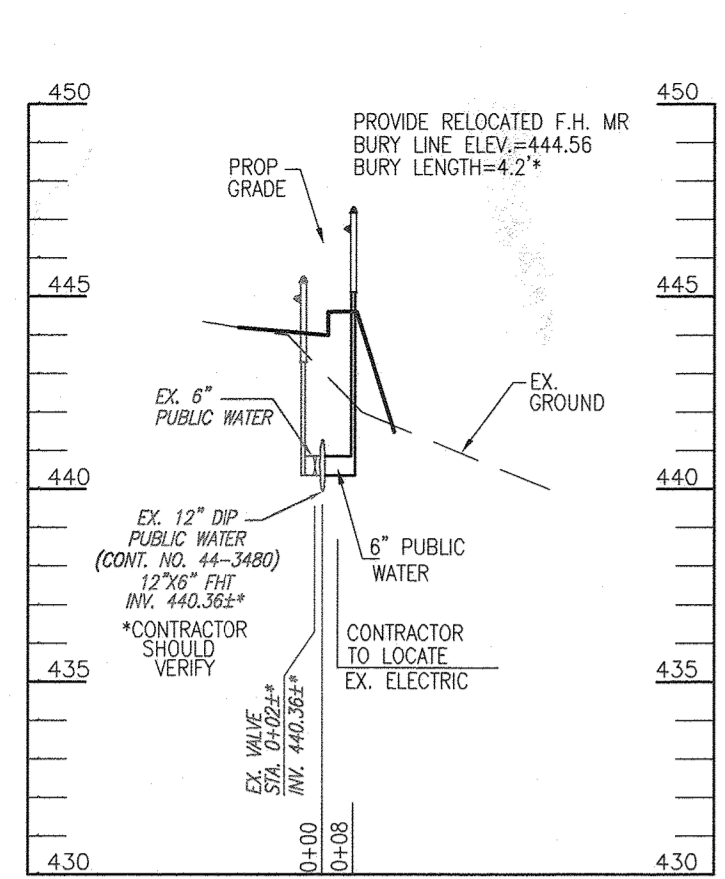
TAX MAP 16 GRID 10
 TAX MAP 16 GRID 10
 3RD ELECTION DISTRICT

ZONED: CEF-M
 ZONED: CEF-M

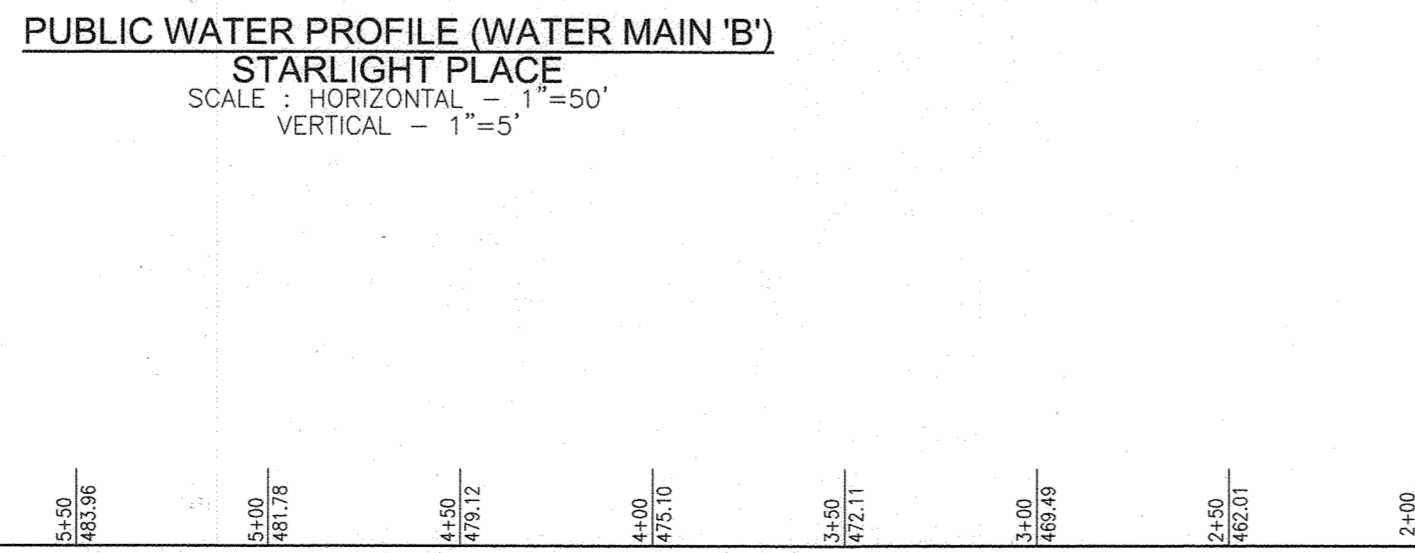
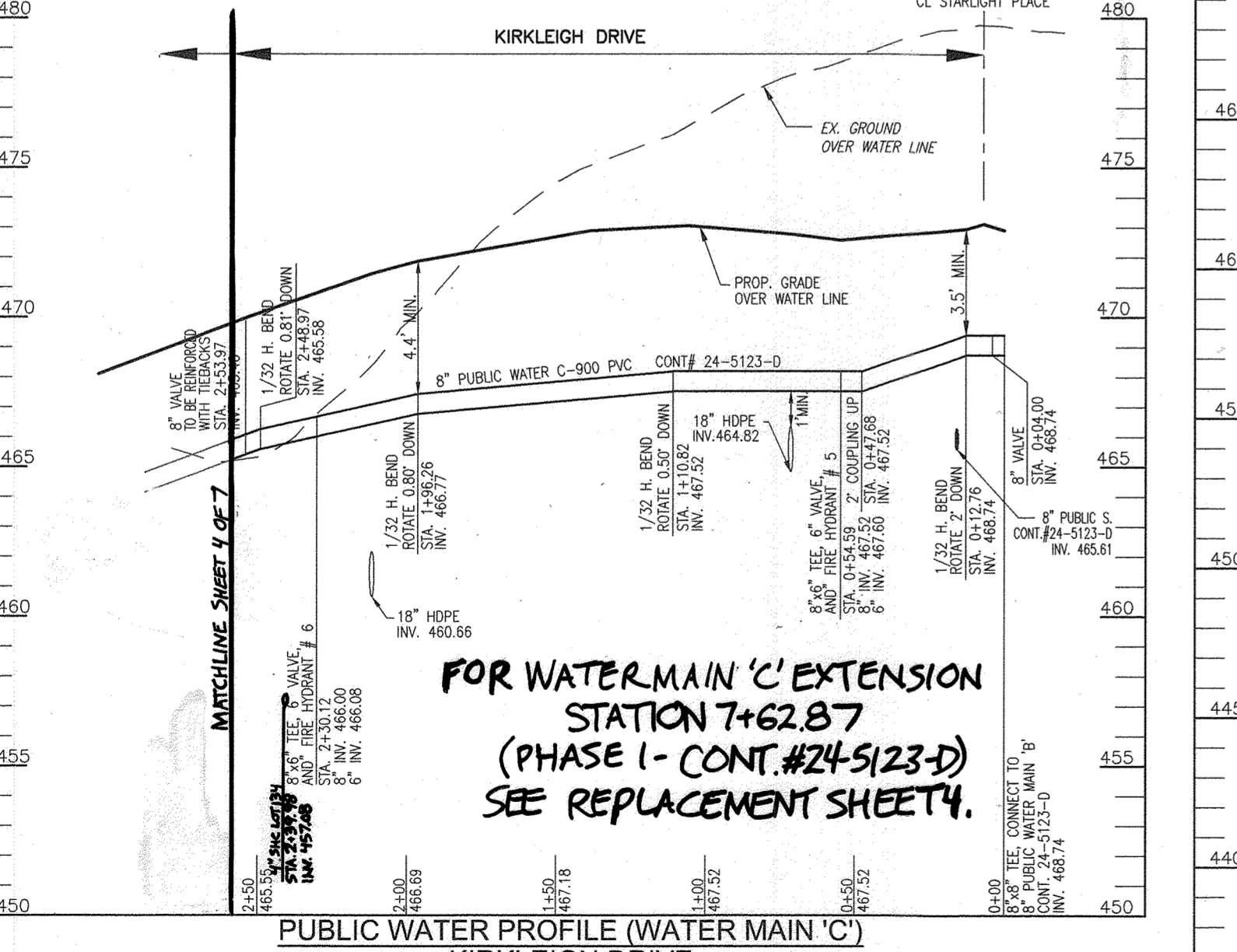
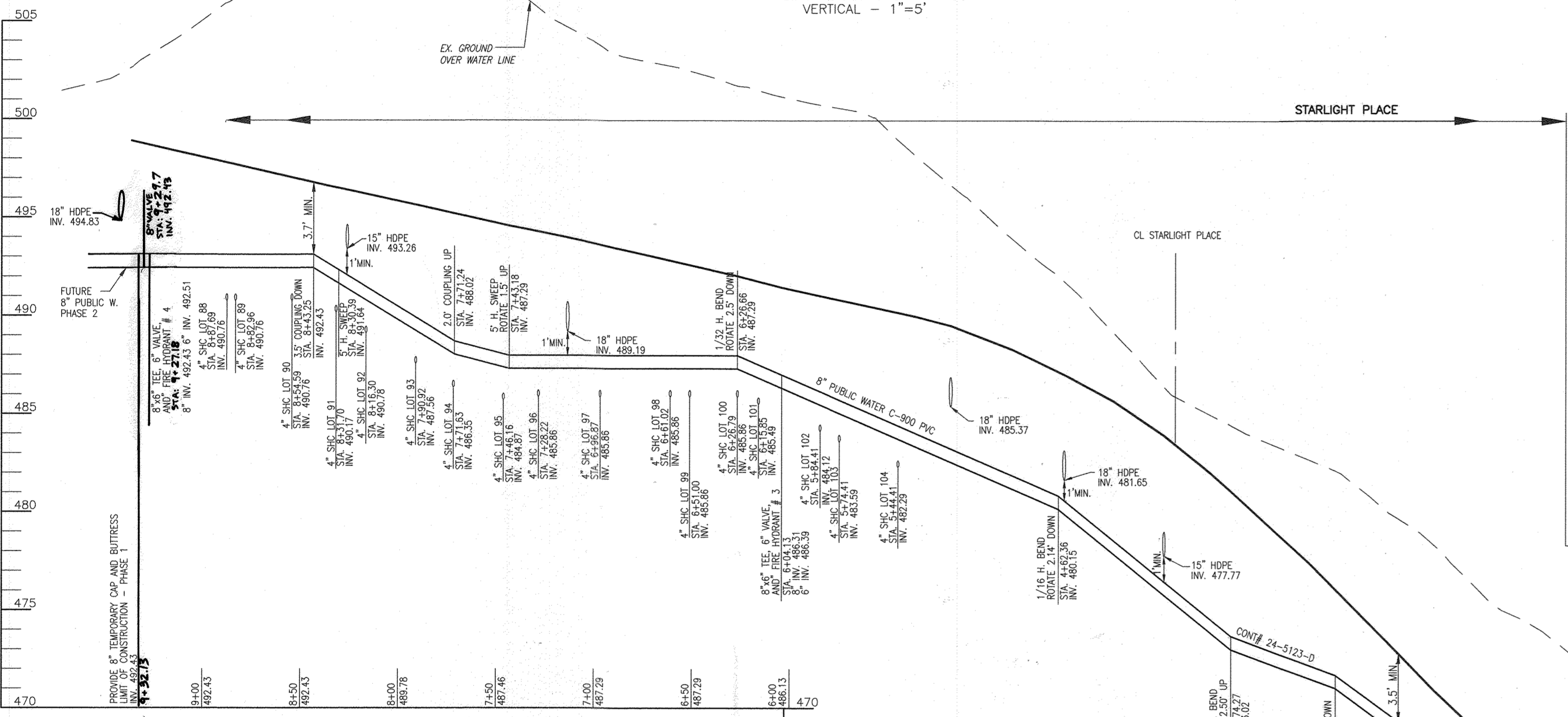
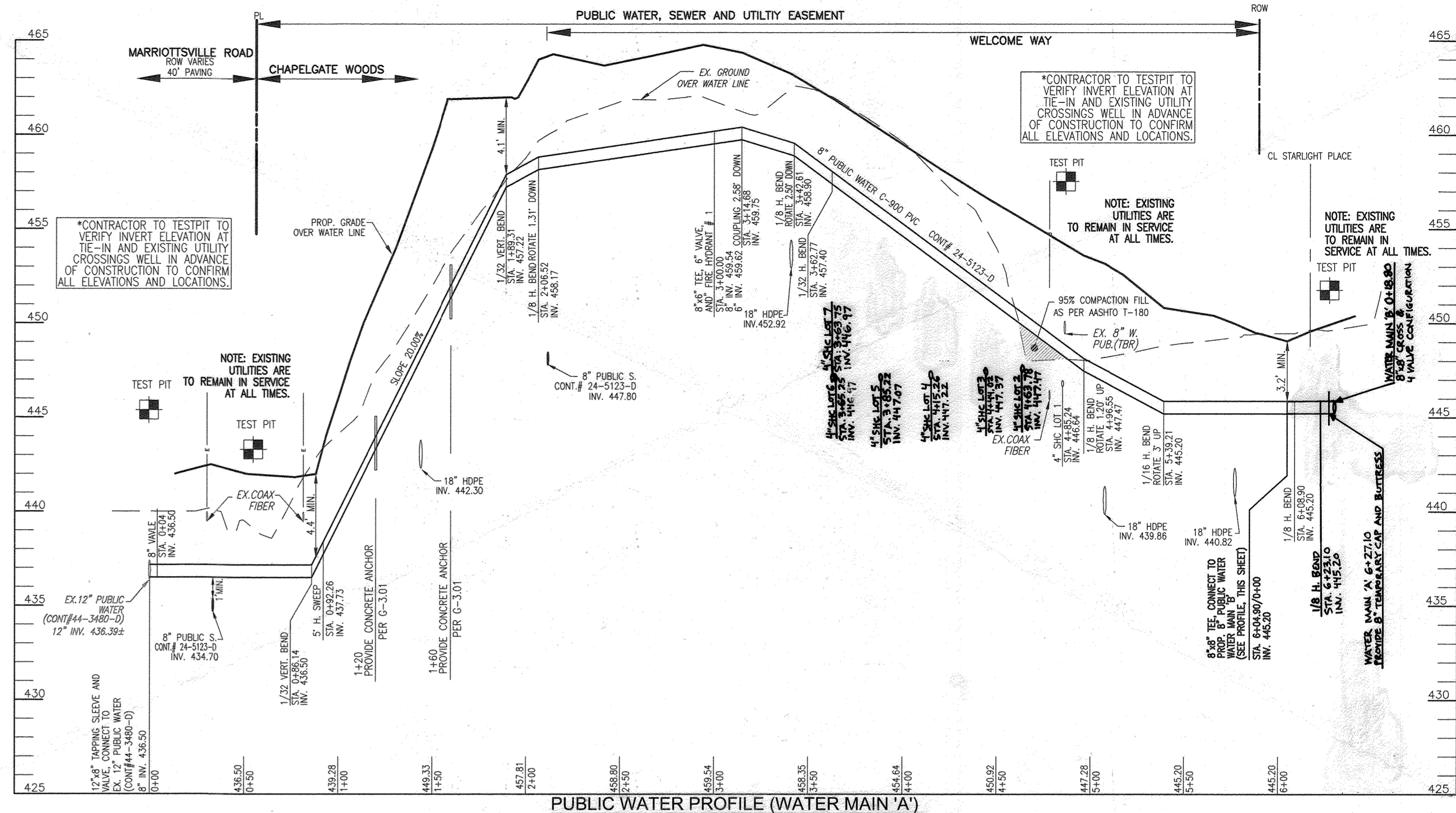
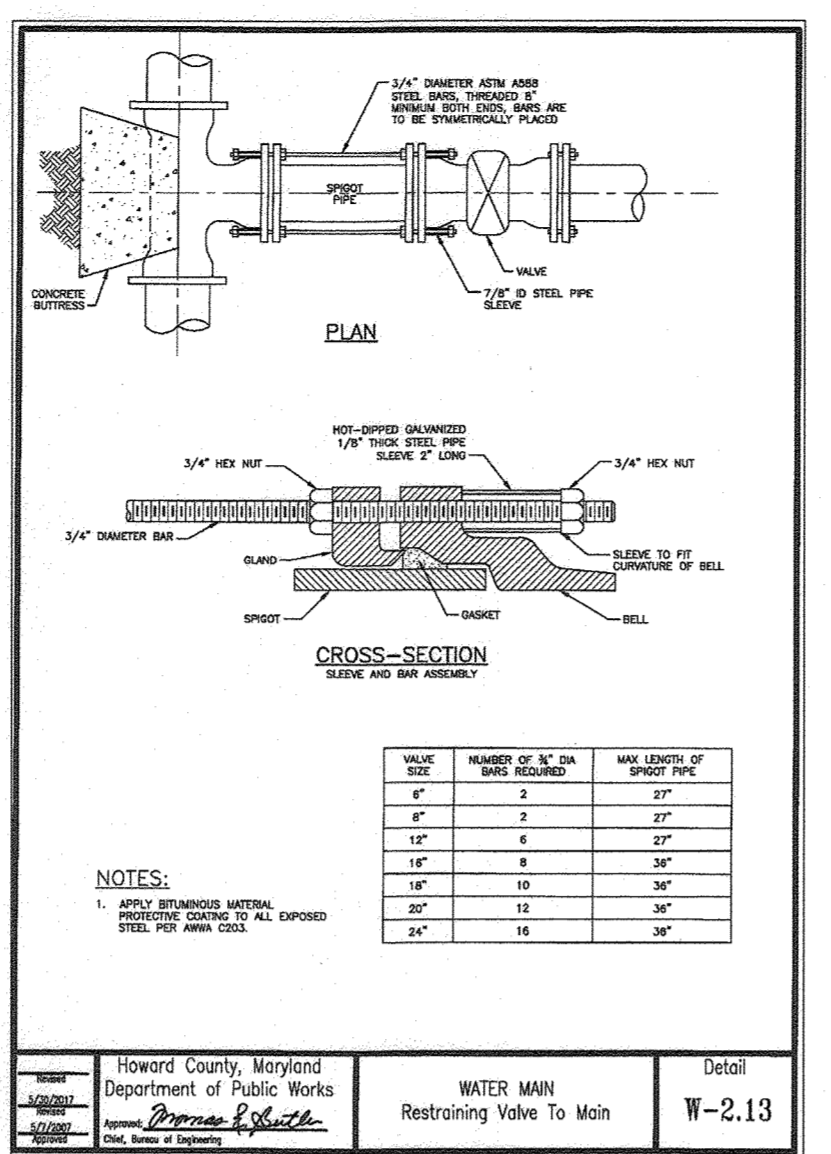
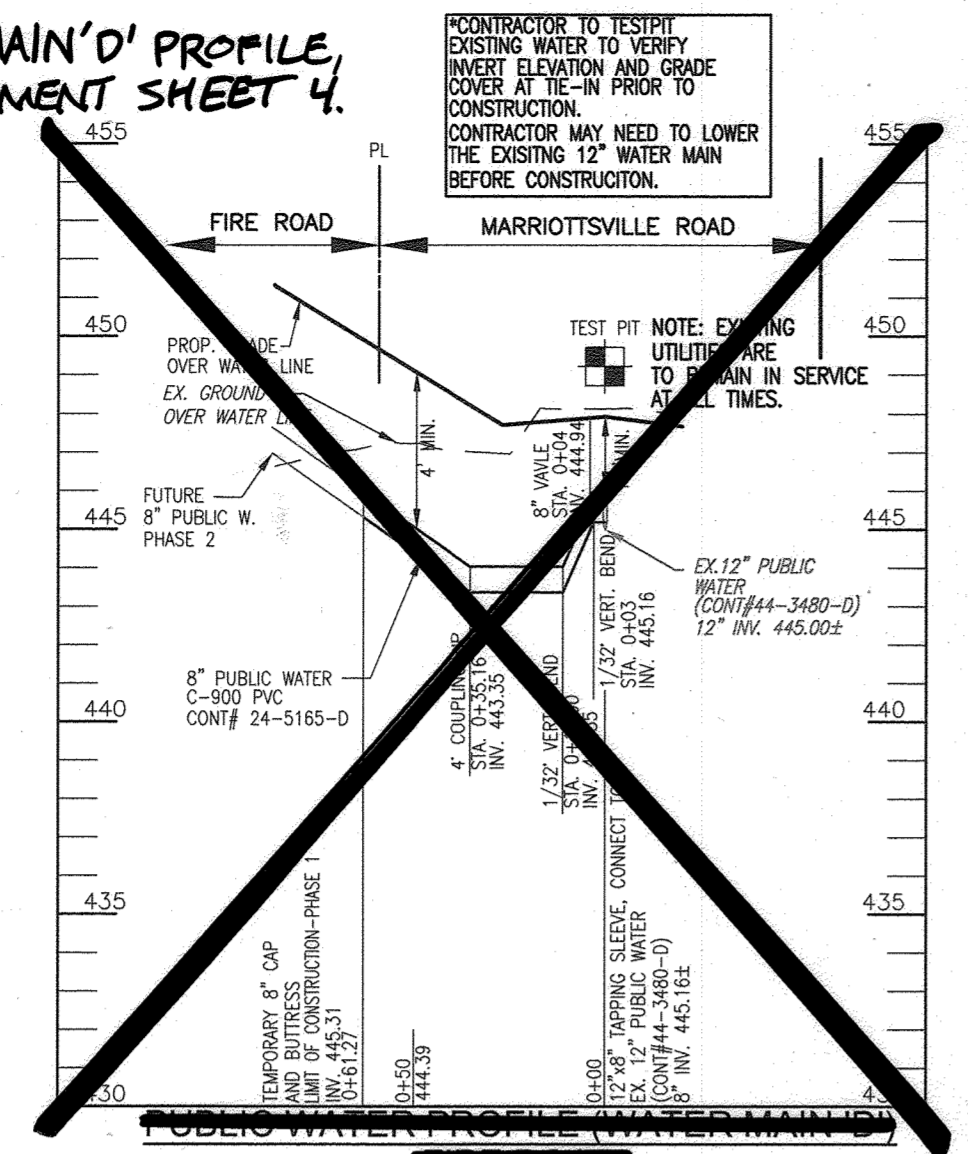
PARCEL 110
 PARCEL 421

HOWARD COUNTY, MARYLAND

SCALE AS SHOWN
 SHEET 2 OF 7



FOR WATER MAIN 'D' PROFILE, SEE REPLACEMENT SHEET 4.



WATER MAIN LOCATION CHART							
STATION	APPURTENANCE	NORTHING	EASTING	STATION	APPURTENANCE	NORTHING	EASTING
WATER LINE 'A'-WELCOME WAY				WATER LINE 'B'-STARLIGHT PLACE			
STA: 0+00	12"x8" TAPPING SLEEVE & VALVE, CONNECT TO EX. 12" PUBLIC WATER, CONT.#44-3480			STA: 0+18.00	8" x 8" CROSS AND VALVES		
STA: 0+04	8" VALVE			STA: 0+20.00	8" VALVE		
STA: 0+06.14	1/32" VERT. BEND			STA: 0+30.00	1/32" H. BEND 5" VERT. SWEEP		
STA: 0+09.26	5" H. SWEEP			STA: 0+56.00	8" x 6" FHT & 6" VALVE		
STA: 1+09.31	1/32" VERT. BEND			STA: 1+10.11	1/32" H. BEND		
STA: 2+06.52	1/8" H. BEND, ROTATE 1.31° DOWN			STA: 2+42.44	1/16" H. BEND, ROTATE 3.0° DOWN		
STA: 3+00.00	8" x 6" FHT & 6" VALVE			STA: 2+65.71	1/32" VERT. BEND		
STA: 3+14.68	2.58" COUPLING DOWN			STA: 2+85.72	8" VALVE		
STA: 3+42.61	1/8" H. BEND, ROTATE 2.50° DOWN			STA: 2+89.72	8" x 8" TEE (Ø WATER LINE 'C')		
STA: 3+62.77	1/32" H. BEND			STA: 3+20.93	1/32" H. BEND, ROTATE 2.07° DOWN		
STA: 4+06.55	1/8" H. BEND, ROTATE 1.20° UP			STA: 3+47.27	1/32" H. BEND, ROTATE 2.50° UP		
STA: 5+39.21	1/16" H. BEND, ROTATE 3° UP			STA: 4+02.36	1/16" H. BEND, ROTATE 2.14° DOWN		
STA: 6+04.90	8" x 6" TEE (Ø WATER LINE 'B')			STA: 6+04.13	8" x 6" FHT & 6" VALVE		
STA: 6+08.90	1/8" H. BEND			STA: 6+26.66	1/32" H. BEND, ROTATE 2.5° DOWN		
STA: 6+23.00	1/8" H. BEND			STA: 7+43.18	5" H. SWEEP, ROTATE 1.7° UP		
STA: 6+27.10	8" TEMPORARY CAP AND BUTTRESS			STA: 7+71.24	1.8" COUPLING UP		
STA: 6+32.00	8" VALVE			STA: 8+30.30	5" H. SWEEP, ROTATE 3.0° DOWN		
WATER LINE 'C'-KIRKLEIGH DRIVE				WATER LINE 'D'-CROSS POINT WAY			
STA: 0+00	8" x 8" TEE (Ø WATER LINE 'B')			STA: 0+00	12"x8" TAPPING SLEEVE & VALVE, CONNECT TO EX. 12" PUBLIC WATER, CONT.#44-3480		
STA: 0+04.00	8" VALVE			STA: 0+03.00	1/32" VERT. BEND		
STA: 0+12.76	1/32" H. BEND, ROTATE 2° DOWN			STA: 0+04.00	8" VALVE		
STA: 0+47.68	2" COUPLING UP			STA: 0+11.00	1/32" VERT. BEND		
STA: 0+54.59	8" x 6" FHT & 6" VALVE			STA: 0+35.16	4" COUPLING UP		
STA: 1+10.82	1/32" H. BEND, ROTATE 0.50° DOWN			STA: 0+61.27	8" TEMPORARY CAP AND BUTTRESS - LIMIT OF PHASE 1		
STA: 1+06.26	1/32" H. BEND, ROTATE 0.80° DOWN			SEE REPLACEMENT SHEET 4 FOR WATER LINE 'D' LOCATION CHART			
STA: 2+30.12	8" x 6" FHT & 6" VALVE			SEE REPLACEMENT SHEET 4 FOR WATER LINE 'C' LOCATION CHART			
STA: 2+48.97	1/32" H. BEND, ROTATE 0.81° DOWN						
STA: 2+53.97	8" VALVE						

VTG	NO.	REVISION	DATE
5		REVISE TO RELOCATE WATER MAIN 'A' AND A PORTION OF 'C' AND SEWER MAINS FROM PHASE 1 TO CHAPEL GATE WOODS - PHASE 2; CONTRACT 24-5123-D; 09-15-2022	09-15-2022
4		REVISE TO RELOCATE WATER MAINS 'A' AND 'B' AND SEWER MAINS FROM PHASE 1 TO CHAPEL GATE WOODS - PHASE 2; CONTRACT 24-5123-D; 09-17-2022	09-17-2022
3		REVISE WATER TIE-IN LOCATION AT INTERSECTION OF STARLIGHT PLACE AND PRESBYTERIAN CHURCH DRIVEWAY	12-14-2020
2		REVISE LOCATION OF FIRE HYDRANT #4	09-23-2022
1		REVISE SITE LAYOUT, WMC AND SHG INVERTS	03-25-2022

DEPARTMENT OF PUBLIC WORKS
HOWARD COUNTY, MARYLAND

DEPARTMENT OF PLANNING & ZONING
HOWARD COUNTY, MARYLAND

DATE: 9-15-22

DATE: 10-4-21

VOGEL ENGINEERING
+
TIMMONS GROUP
3300 NORTH RIDGE ROAD, SUITE 110, ELLICOTT CITY, MD 21043
P: 410.461.7666 F: 410.461.8961 www.timmons.com

PROFESSIONAL CERTIFICATE
I HEREBY CERTIFY THAT THESE DOCUMENTS WERE PREPARED OR APPROVED BY ME AND THAT I AM A DULY LICENSED PROFESSIONAL ENGINEER UNDER THE LAWS OF THE STATE OF MARYLAND, LICENSE NO. 18163
EXPIRATION DATE: 09-27-2022

DRN: KG DES: KG
CHK: RHV
DATE: SEPTEMBER 2021

FINAL WATER AND SEWER CONSTRUCTION PLAN
CONTRACT 24-5123-D
WATER PROFILES

600' SCALE MAP NO. 16 BLOCK NO. 10

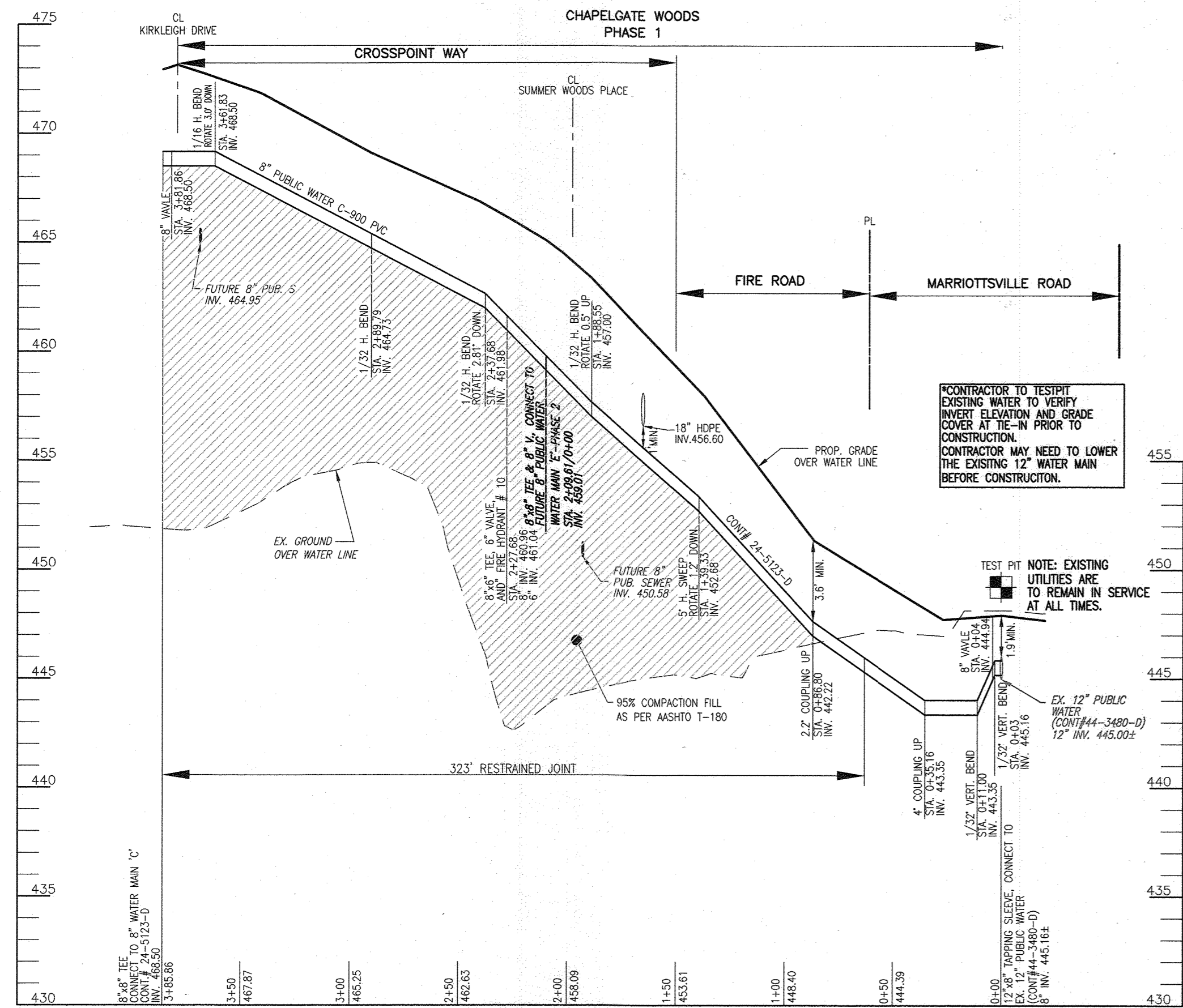
OWNER: CHAPEL GATE PRESBYTERIAN CHURCH, INC.
2600 MARIOTTVILLE RD.
MARIOTTVILLE, MD 21104
(410) 442-5888

DEVELOPER: SECURITY DEVELOPMENT
8480 BALTIMORE NATIONAL PIKE
SUITE 415
ELLICOTT CITY, MD 21041
410-465-4244
SDCPROPERTIES.COM

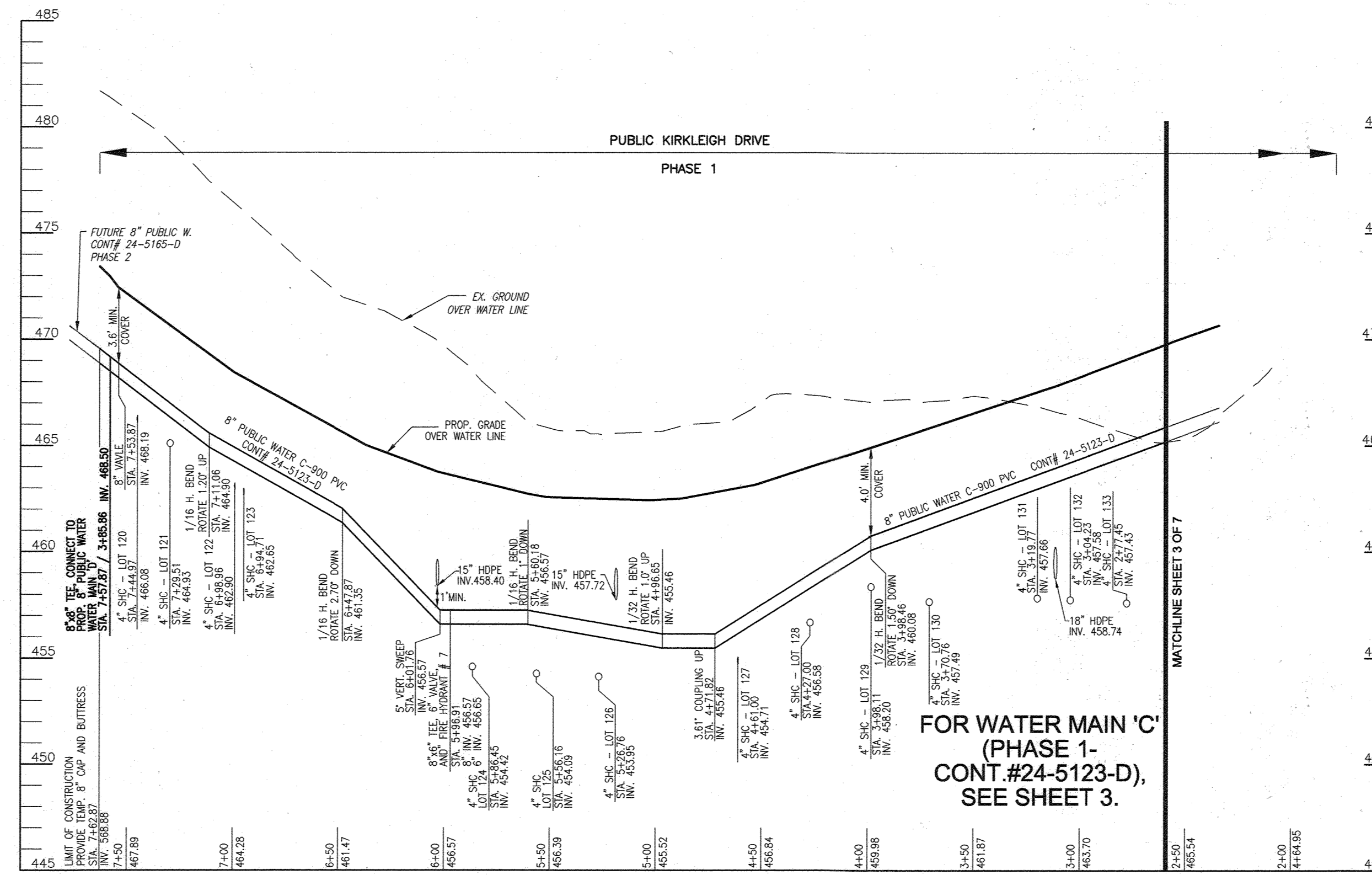
CHAPEL GATE WOODS-PHASE 1
LOTS 1-43, 88-118, 120-134, AND OPEN SPACE LOTS 135-137, PARCEL A AND NON-BUILDABLE PARCELS B & C

TAX MAP 16 GRID 10 ZONED: CEF-M PARCEL 110
TAX MAP 16 GRID 10 ZONED: CEF-M PARCEL 421
3RD ELECTION DISTRICT HOWARD COUNTY, MARYLAND

SHEET 3 OF 7



PUBLIC WATER PROFILE (WATER MAIN 'D')
CROSSPOINT WAY
 SCALE: HORIZONTAL = 1"=50'
 VERTICAL = 1"=5'



PUBLIC WATER PROFILE (WATER MAIN 'C')
KIRKLEIGH DRIVE
 SCALE: HORIZONTAL = 1"=50'
 VERTICAL = 1"=5'

WATER MAIN LOCATION CHART			
STATION	APPURTENANCE	NORTHING	EASTING
WATER LINE 'C'-KIRKLEIGH DRIVE			
SEE SHEET 3 FOR WATER LINE 'C' LOCATION CHART.			
STA. 3+98.46	1/32" H. BEND, ROTATE 1.50' DOWN		
STA. 4+71.82	3.61' COUPLING UP		
STA. 4+96.65	1/32" H. BEND, ROTATE 1.07' UP		
STA. 5+60.18	1/16" H. BEND, ROTATE 1' DOWN		
STA. 5+96.91	8" x 6" FHT & 6" VALVE, FHT7		
STA. 6+01.76	5" VERT. SWEEP		
STA. 6+47.87	1/16" H. BEND, ROTATE 2.70' DOWN		
STA. 7+11.06	1/16" H. BEND, ROTATE 1.20' UP		
STA. 7+53.87	8" W/VE		
STA. 7+57.87	8"x8" TEE (Ø WATER LINE 'D')		
STA. 7+62.87	8" TEMPORARY CAP AND BUTTRESS		
WATER LINE 'D'- CROSS POINT WAY			
STA. 0+00	12"x8" TAPPING SLEEVE & VALVE, CONNECT TO EX. 12" PUBLIC WATER, CONT. 24-5123-D		
STA. 0+03.00	1/32" VERT. BEND		
STA. 0+04.00	8" VALVE		
STA. 0+11.00	1/32" VERT. BEND		
STA. 0+35.16	4" COUPLING UP		
STA. 0+86.80	2.2' COUPLING UP		
STA. 1+39.33	5" H. SWEEP, ROTATE 1.2' DOWN		
STA. 1+88.55	1/32" H. BEND, ROTATE 0.5' UP		
STA. 2+09.61	8"x8" TEE (Ø WATER LINE 'E')-PHASE 2		
STA. 2+27.68	8" x 6" FHT & 6" VALVE, FHT10		
STA. 2+37.68	1/32" H. BEND, ROTATE 2.81' DOWN		
STA. 2+89.79	1/32" H. BEND		
STA. 3+61.83	1/16" H. BEND, ROTATE 3.0' DOWN		
STA. 3+81.86	8" W/VE		
STA. 3+86.86	8"x8" TEE (Ø WATER LINE 'C')		

SEWER HOUSE CONNECTION - AS-BUILT LOCATION TABLE					
CHAPEL GATE WOODS - "PHASE 1" LOTS			CHAPEL GATE WOODS - "PHASE 1" LOTS		
LOT	STREET ADDRESS	LOCATION DIMENSION 1	LOCATION DIMENSION 2	LOT	STREET ADDRESS
LOT 21		SHCSMH 56'	SHCSMH 34'	LOT 123	SHCSMH 73'
LOT 22		SHCSMH 56'	SHCSMH 34'	LOT 124	SHCSMH 39'
LOT 23		SHCSMH 36'	SHCSMH 36'	LOT 125	SHCSMH 36'
LOT 24		SHCSMH 23'	SHCSMH 36'	LOT 126	SHCSMH 47'
LOT 25		SHCSMH 46'	SHCSMH 36'	LOT 127	SHCSMH 28'
LOT 26		SHCSMH 36'	SHCSMH 36'	LOT 128	SHCSMH 36'
LOT 27		SHCSMH 36'	SHCSMH 36'	LOT 129	SHCSMH 37'
LOT 28		SHCSMH 37'	SHCSMH 36'	LOT 130	SHCSMH 49'
LOT 29		SHCSMH 44'	SHCSMH 36'	LOT 131	SHCSMH 39'
LOT 30		SHCSMH 37'	SHCSMH 36'	LOT 132	SHCSMH 34'
LOT 31		SHCSMH 37'	SHCSMH 36'	LOT 133	SHCSMH 39'
LOT 32		SHCFH 7'	SHCSMH 36'		
LOT 33		SHCFH 7'	SHCSMH 36'		
LOT 34		SHCFH 7'	SHCSMH 36'		
LOT 35		SHCFH 7'	SHCSMH 39'		
LOT 36		SHCFH 7'	SHCSMH 39'		
LOT 37		SHCFH 7'	SHCSMH 39'		
LOT 38		SHCFH 7'	SHCSMH 23'		
LOT 39		SHCFH 10'	SHCSMH 23'		
LOT 40		SHCFH 10'	SHCSMH 23'		
LOT 41		SHCFH 10'	SHCSMH 23'		
LOT 42		SHCFH 10'	SHCSMH 23'		
LOT 43		SHCFH 10'	SHCSMH 23'		
LOT 120		SHCSMH 39'	SHCSMH 37'		
LOT 121		SHCSMH 42'	SHCSMH 37'		
LOT 122		SHCSMH 26'	SHCSMH 34'		

FOR ADDITIONAL PHASE 1 LOTS, REFER TO SHEET 7

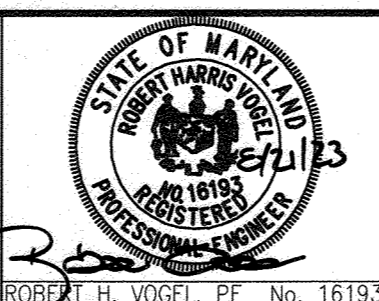
WATER HOUSE CONNECTION - AS-BUILT LOCATION TABLE					
CHAPEL GATE WOODS - "PHASE 1" LOTS			CHAPEL GATE WOODS - "PHASE 1" LOTS		
LOT	STREET ADDRESS	LOCATION DIMENSION 1	LOCATION DIMENSION 2	LOT	STREET ADDRESS
LOT 21		TWHC-FH-6 70'	TWHC-SMH-34 32'	LOT 123	WHC-SMH-36 33'
LOT 22		TWHC-FH-6 70'	TWHC-SMH-34 32'	LOT 124	WHC-FH-7 11'
LOT 23		WHC-SMH-36 22'	WHC-SMH-36 73'	LOT 125	WHC-FH-7 45'
LOT 24		TWHC-SMH-35 27'	WHC-SMH-36 43'	LOT 126	WHC-FH-7 74'
LOT 25		TWHC-SMH-35 27'	WHC-SMH-36 43'	LOT 127	WHC-SMH-37 67'
LOT 26		WHC-SMH-35 27'	WHC-SMH-36 22'	LOT 128	WHC-SMH-37 67'
LOT 27		WHC-SMH-35 27'	WHC-SMH-36 21'	LOT 129	WHC-SMH-37 35'
LOT 28		WHC-SMH-35 15'	WHC-SMH-36 57'	LOT 130	WHC-SMH-37 124'
LOT 29		TWHC-SMH-37 27'	WHC-SMH-36 67'	LOT 131	WHC-FH-6 106'
LOT 30		TWHC-SMH-37 27'	WHC-SMH-36 87'	LOT 132	WHC-FH-6 62'
LOT 31		WHC-SMH-37 25'	WHC-SMH-36 117'	LOT 133	WHC-FH-6 16'
LOT 32		WHC-SMH-38 34'	WHC-FH-7 76'		
LOT 33		TWHC-SMH-38 23'	WHC-FH-7 52'		
LOT 34		WHC-SMH-38 23'	WHC-FH-7 52'		
LOT 35		WHC-SMH-39 34'	WHC-FH-7 46'		
LOT 36		WHC-SMH-39 25'	WHC-FH-7 51'		
LOT 37		WHC-SMH-39 28'	WHC-FH-7 74'		
LOT 38		WHC-FH-10 85'	WHC-SMH-23 103'		
LOT 39		WHC-FH-10 66'	WHC-SMH-23 84'		
LOT 40		WHC-FH-10 48'	WHC-SMH-23 54'		
LOT 41		WHC-FH-10 38'	WHC-SMH-23 42'		
LOT 42		WHC-FH-10 41'	WHC-SMH-23 30'		
LOT 43		WHC-FH-10 60'	WHC-SMH-23 17'		
LOT 120		WHC-SMH-26	WHC-SMH-27		
LOT 121		WHC-SMH-26 46'	WHC-SMH-27 38'		
LOT 122		WHC-SMH-26 46'	WHC-SMH-27 38'		

FOR ADDITIONAL PHASE 1 LOTS, REFER TO SHEET 7

DEPARTMENT OF PUBLIC WORKS
 HOWARD COUNTY, MARYLAND
 DATE: 9/17/2023

DEPARTMENT OF PLANNING & ZONING
 HOWARD COUNTY, MARYLAND
 DATE: 9/14/23

VOGEL ENGINEERING
TIMMONS GROUP
 3300 NORTH RIDGE ROAD, SUITE 110, ELLICOTT CITY, MD 21043
 P: 410.461.7666 F: 410.461.8961 www.timmons.com



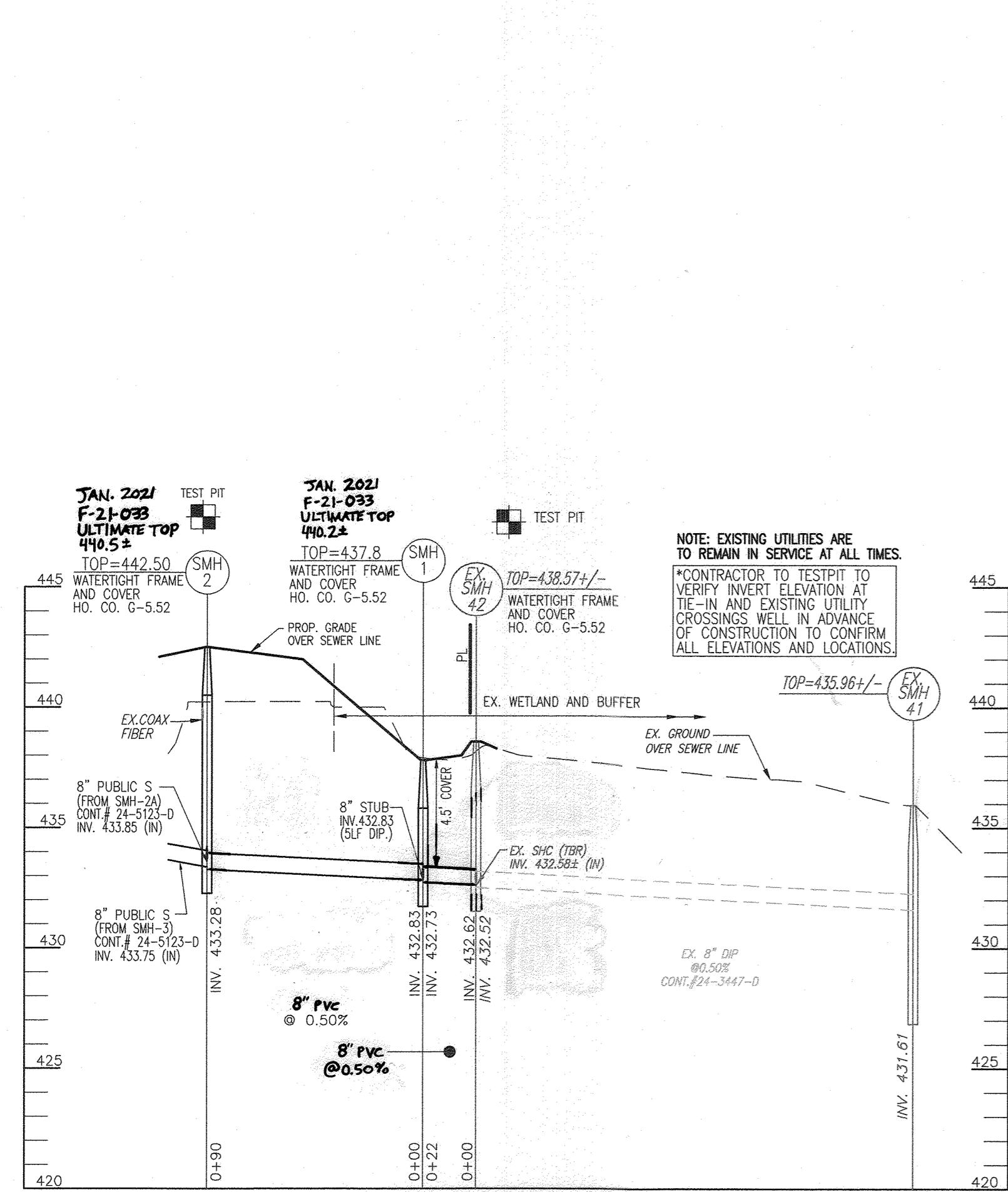
PROFESSIONAL CERTIFICATE
 I HEREBY CERTIFY THAT THESE DOCUMENTS
 WERE PREPARED OR APPROVED BY ME, AND
 THAT I AM A DULY LICENSED PROFESSIONAL
 ENGINEER UNDER THE LAWS OF THE STATE
 OF MARYLAND, LICENSE NO. 16193
 EXPIRATION DATE: 09-27-2024
 DRN: KG DES: EDS
 CHK: RHV
 DATE: JULY 2023

NO.	DATE	BY	REVISION
1	10-13-2023		AS-BUILT
2	08-15-2023		REVISE TO RELOCATE WATER MAIN 'A' AND A PORTION OF 'C' AND SEWER MAINS 6'-10, 35-39, 228 AND 23-27 FROM PHASE 2 (24-5165-D) TO PHASE 1 (24-5123-D)
3	04-17-2023		REVISE TO RELOCATE WATER MAINS 'A' AND 'D' AND SEWER MAINS 5MH-SMH10 TO CHAPEL GATE WOODS - PHASE 2, CONTRACT 24-5165-D
4	12-14-2022		REVISE WATER TIE-IN LOCATION AT INTERSECTION OF STARLIGHT PLACE AND PRESBYTERIAN CHURCH DRIVEWAY
5	09-23-2022		REVISE LOCATION OF FIRE HYDRANT #4
6	03-25-2022		REVISE SITE LAYOUT, WHC AND SHC INVERTS.

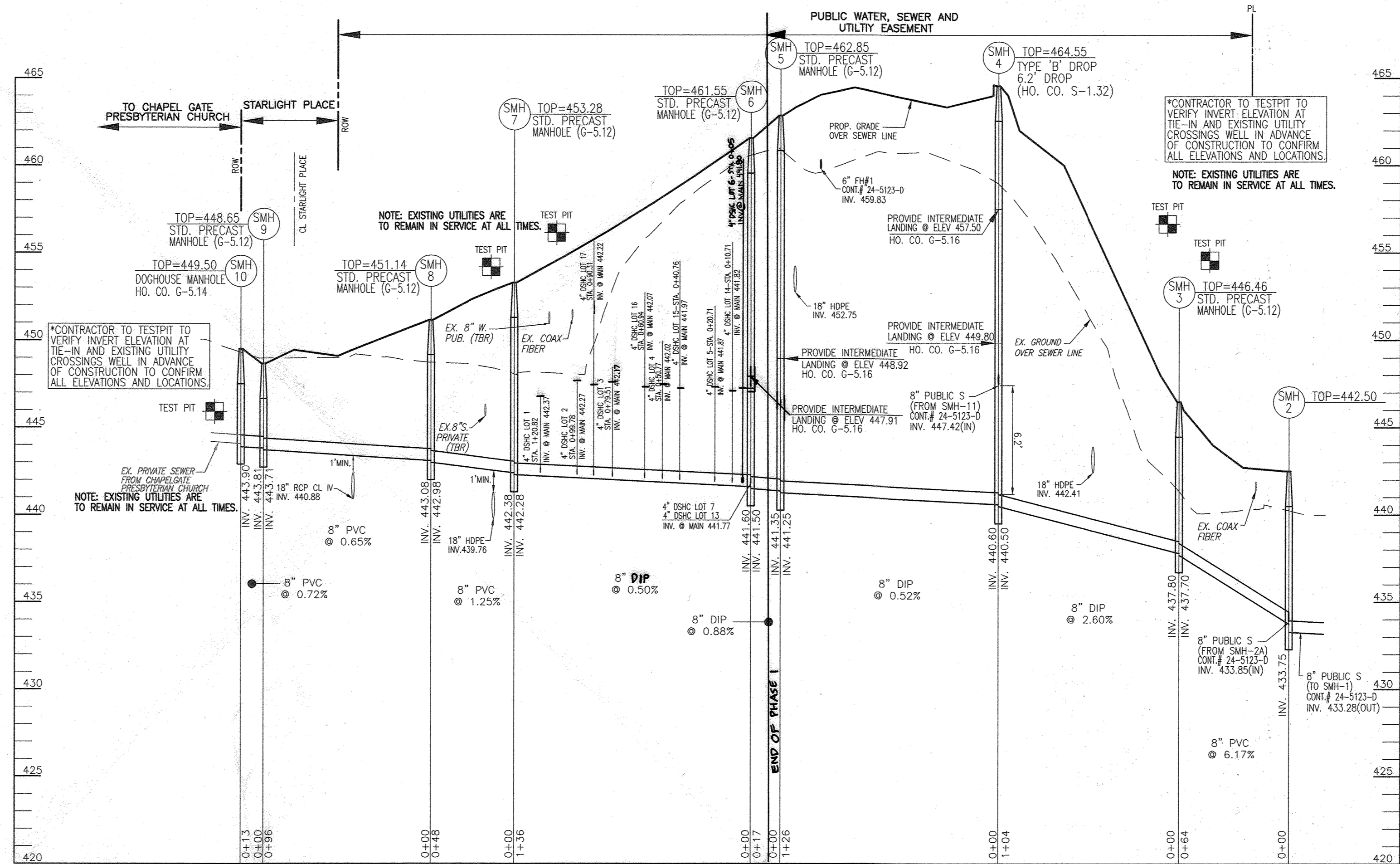
FINAL WATER AND SEWER CONSTRUCTION PLAN
CONTRACT 24-5123-D

CHAPEL GATE WOODS-PHASE 1
 LOTS 1-43, 88-118, 120-134, AND OPEN SPACE LOTS 135-137, PARCEL A AND NON-BUILDABLE PARCELS B & C

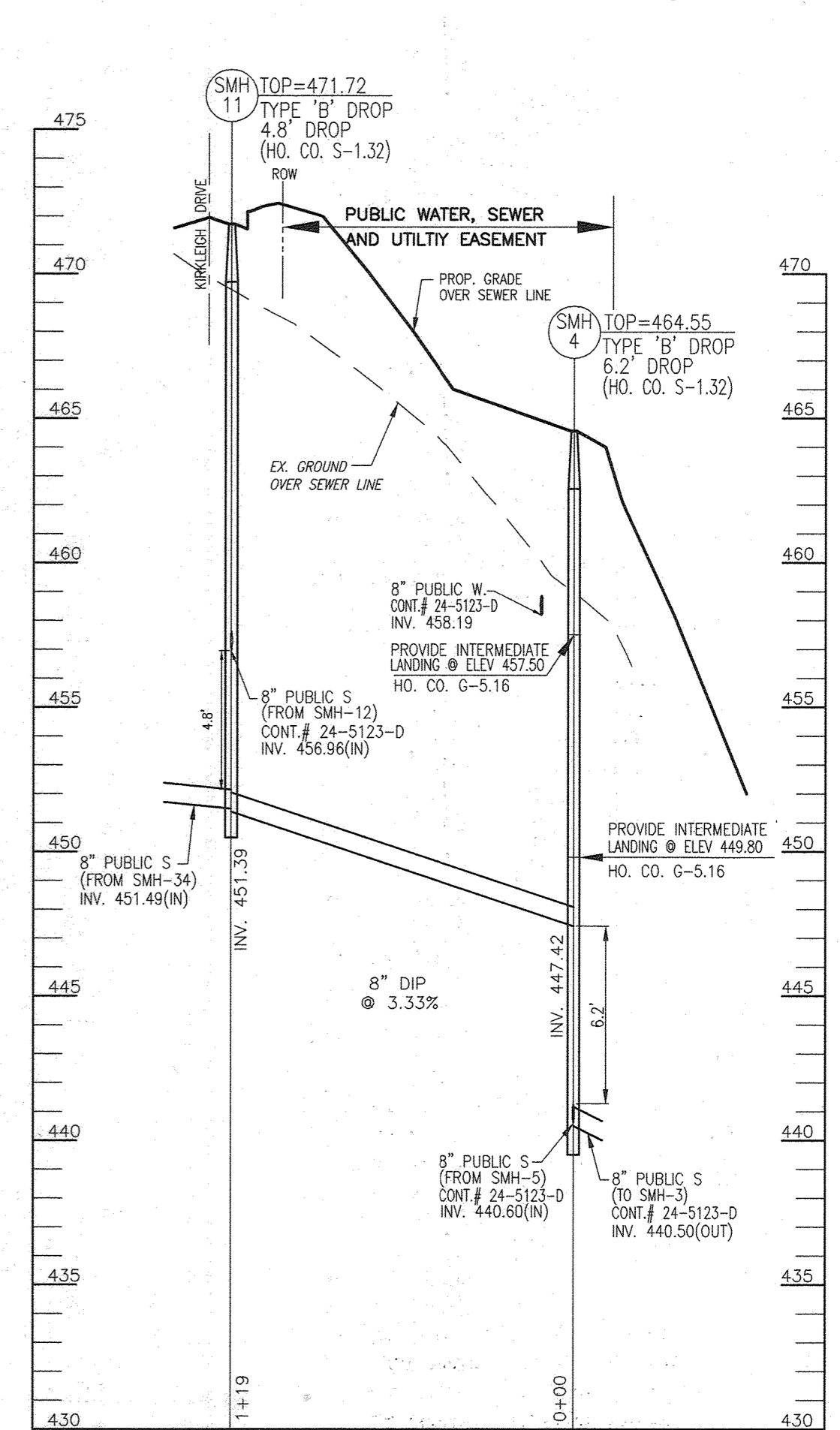
SCALE AS SHOWN
 SHEET 4 OF 7
 TAX MAP 16 GRID 10 ZONED: CEF-M PARCEL 110
 3RD ELECTION DISTRICT HOWARD COUNTY, MARYLAND



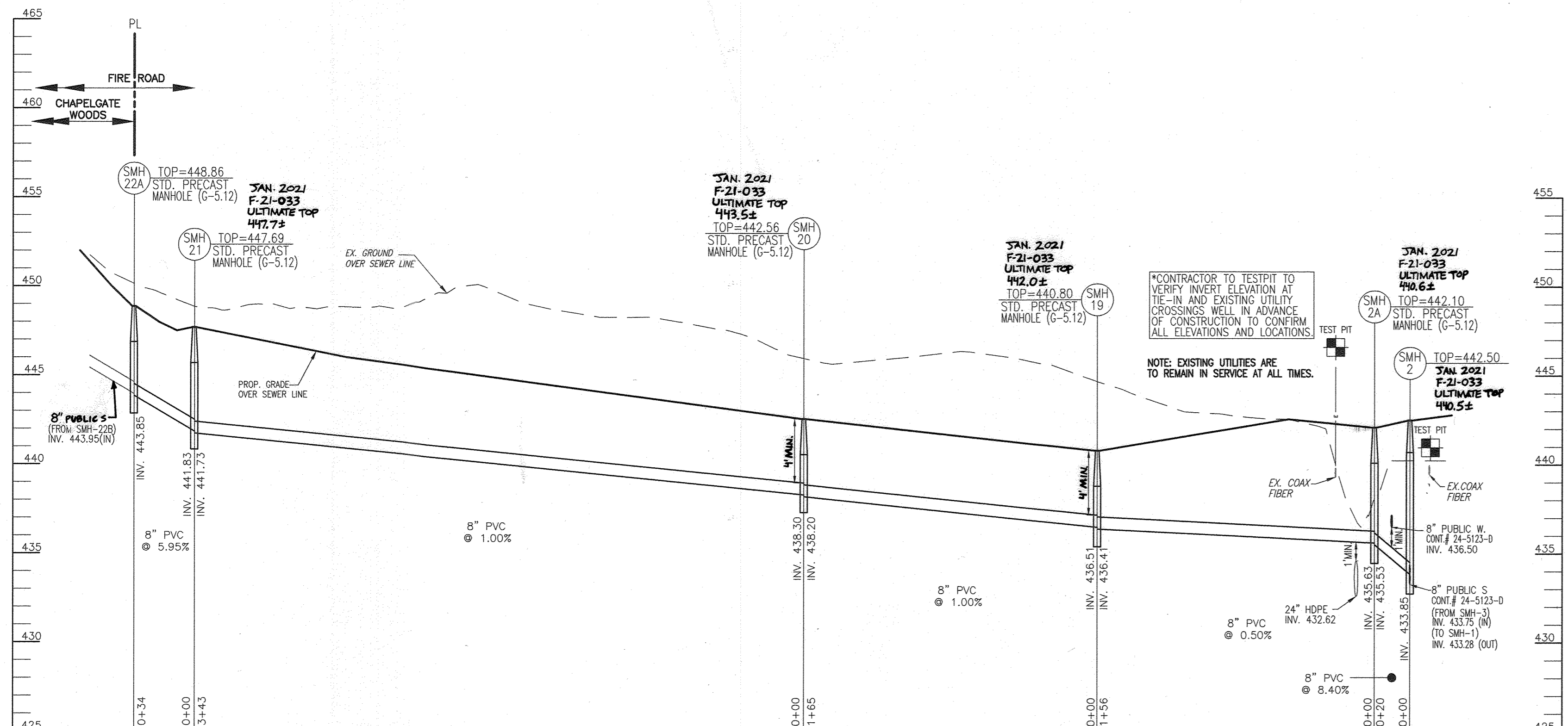
PUBLIC SEWER PROFILE
SCALE: HORIZONTAL - 1"=50'
VERTICAL - 1"=5'



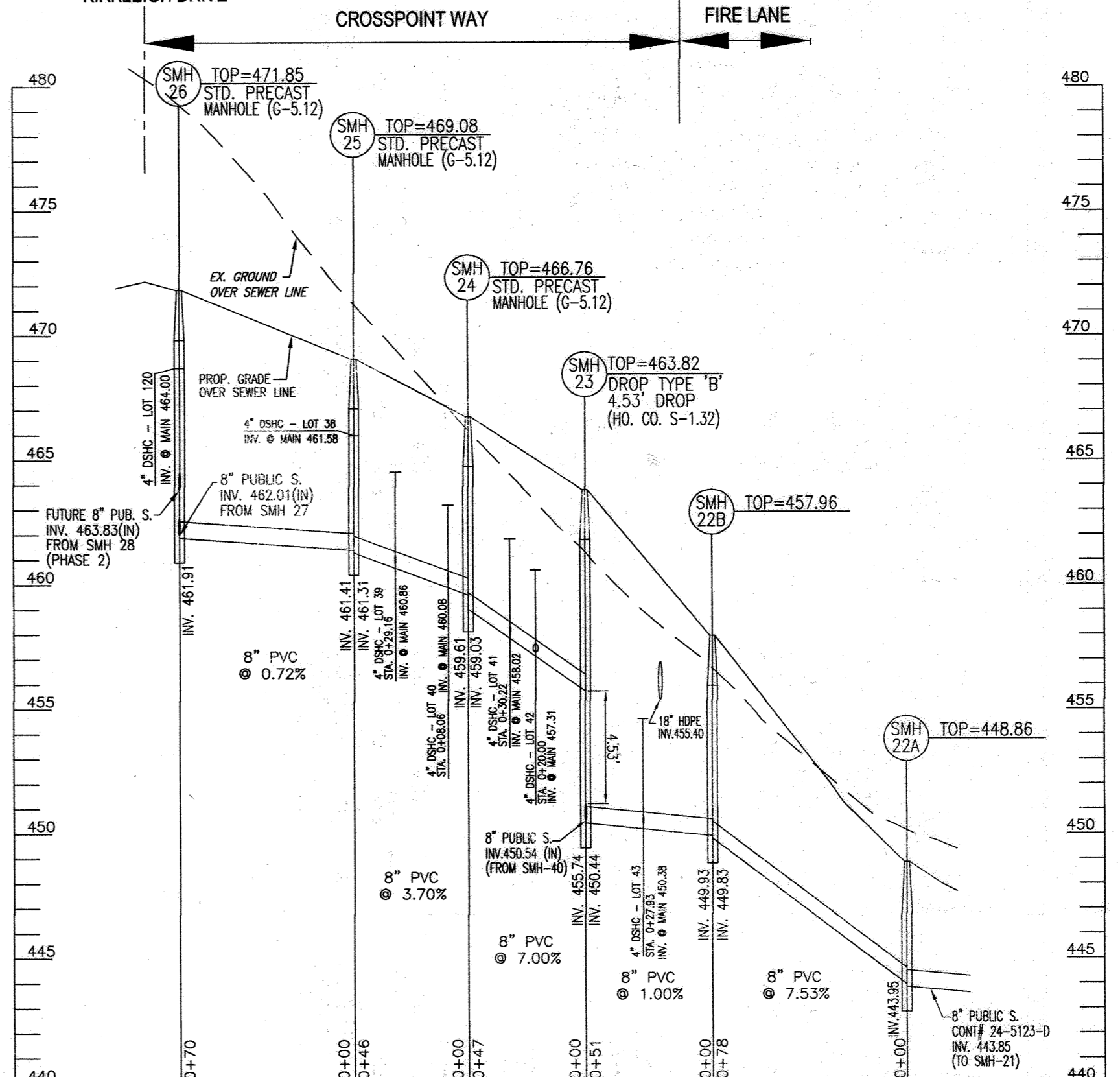
PUBLIC SEWER PROFILE
SCALE: HORIZONTAL - 1"=50'
VERTICAL - 1"=5'



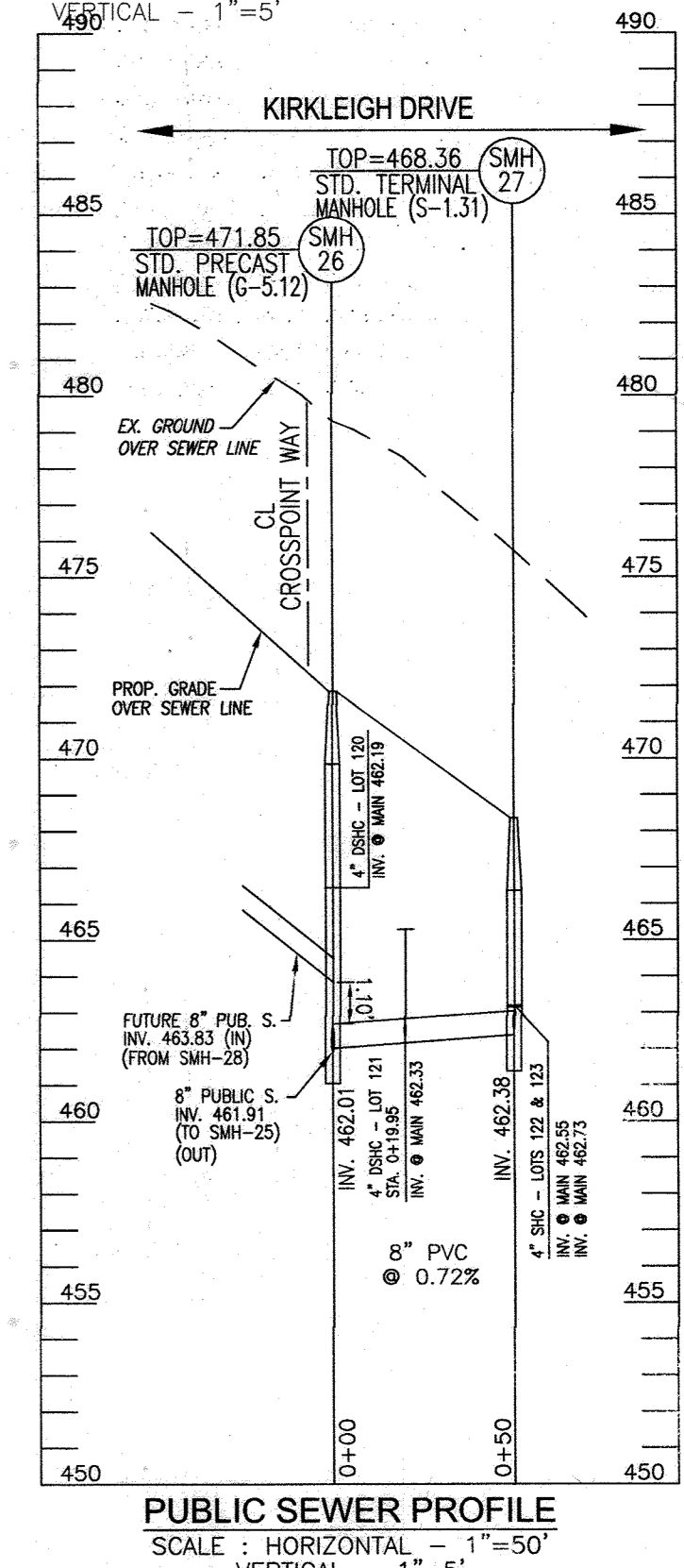
PUBLIC SEWER PROFILE
SCALE: HORIZONTAL - 1"=50'
VERTICAL - 1"=5'



PUBLIC SEWER PROFILE
SCALE: HORIZONTAL - 1"=50'
VERTICAL - 1"=5'



PUBLIC SEWER PROFILE
SCALE: HORIZONTAL - 1"=50'
VERTICAL - 1"=5'

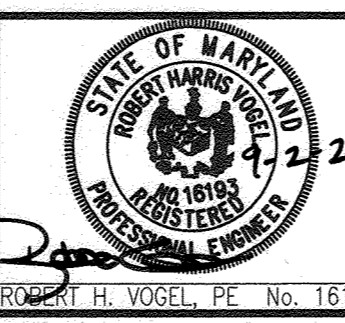


PUBLIC SEWER PROFILE
SCALE: HORIZONTAL - 1"=50'
VERTICAL - 1"=5'

DEPARTMENT OF PUBLIC WORKS
HOWARD COUNTY, MARYLAND
CHIEF, BUREAU OF UTILITIES
DATE: 9-15-21

DEPARTMENT OF PLANNING & ZONING
HOWARD COUNTY, MARYLAND
CHIEF, DEVELOPMENT ENGINEERING DIVISION
DATE: 10-4-21

VOGEL ENGINEERING
TIMMONS GROUP
3300 NORTH RIDGE ROAD, SUITE 110, ELLICOTT CITY, MD 21104
P: 410.461.7666 F: 410.461.8961 www.timmons.com



PROFESSIONAL CERTIFICATE
I HEREBY CERTIFY THAT THESE DOCUMENTS WERE PREPARED OR APPROVED BY ME, AND THAT I AM A DULY LICENSED PROFESSIONAL ENGINEER UNDER THE LAWS OF THE STATE OF MARYLAND, LICENSE NO. 16193, EXPIRATION DATE: 09-27-2022

DRN:	KG	DES:	KG	VTG:	4	REVISE TO RELOCATE WATER MAIN 'A', 'D', AND A PORTION OF 'C' AND SEWER MAINS; C10, 35-39, 228 AND 23-27 FROM PHASE 2 (24-5123-D) TO PHASE 1 (24-5123-D) 08-15-2020
CHK:	RHV	VTG:	1	BY:	NO.	REVISE TO RELOCATE WATER MAINS 'A' AND 'D' AND SEWER MAINS 'A' AND 'D' TO CHAPEL GATE WOODS-PHASE 2, CONTRACT 24-5123-D 04-17-2020
DATE:	SEPTEMBER 2021	REVISION:		DATE:		REVISE SITE LAYOUT, WMC AND SMC INVERTS 03-25-2022

FINAL WATER AND SEWER CONSTRUCTION PLAN
CONTRACT 24-5123-D
SEWER PROFILES

CHAPEL GATE WOODS-PHASE 1
LOTS 1-43, 88-118, 120-134, AND OPEN SPACE LOTS 135-137, PARCEL A AND NON-BUILDABLE PARCELS B & C

OWNER: CHAPEL GATE PRESBYTERIAN CHURCH, INC.
2600 MARIOTTVILLE RD.
MARIOTTVILLE, MD 21104
(410) 442-5888

DEVELOPER: SECURITY DEVELOPMENT
8480 BALTIMORE NATIONAL PIKE, SUITE 415
ELLICOTT CITY, MD 21041
410-465-4244
SDCPROPERTIES.COM

TAX MAP 16 GRID 10
TAX MAP 16 GRID 10
3RD ELECTION DISTRICT

ZONED: CEF-M
ZONED: CEF-M

PARCEL 110
PARCEL 421
HOWARD COUNTY, MARYLAND

SCALE AS SHOWN
SHEET 5 OF 7

SEQUENCE OF CONSTRUCTION
REMOVAL OF EXISTING SECTIONS OF PUBLIC WATER MAIN
(CONTRACT 44-3641-D) AND PRIVATE SEWER MAIN

- NOTE:**
 ACCESS & UTILITY SERVICES TO THE CHAPEL GATE CHURCH FACILITY SHALL BE MAINTAINED AT ALL TIMES DURING CONSTRUCTION.
- EXISTING STREET LIGHTS ALONG THE CHURCH DRIVEWAY SHALL BE SALVAGED AND TURNED OVER TO CHAPEL GATE PRESBYTERIAN CHURCH.
- EXISTING WATER MAIN - 44-3641-D
- IN ACCORDANCE WITH HOWARD COUNTY REQUIREMENTS, NOTIFY CHAPEL GATE PRESBYTERIAN CHURCH (#2600) OF THE PLANNED TEMPORARY WATER MAIN SHUT-OFF.
 - WATER SERVICE SHALL REMAIN TO THE CHURCH FACILITY AT ALL TIMES DURING CONSTRUCTION.
 - CONTACT THE BUREAU OF UTILITIES TO TEMPORARILY CLOSE (IF REQUIRED) THE EXISTING 44-3641-D VALVE AT MARRIOTTVILLE ROAD.
 - COMMENCE WITH TEMPORARY WATER MAIN 44-3641-D SHUT-OFF.
 - REFER TO PHASE 1 DETAIL HEREON.
 - REMOVE A PORTION OF EXISTING WATER MAIN 44-3641-D AT THE "PHASE 1" WATER MAIN "B" CROSS LOCATION SHOWN HEREON. COMPLETE THE INSTALLATION OF WATER MAIN "B" CROSS (WATER MAIN "B" 0+18.8). INSTALL VALVES IN ALL DIRECTIONS FROM THE CROSS (FOUR (4)) AND INSTALL A 24"-8" SLUB (WM "A" 6+23.1) IN THE PHASE 2 WATER MAIN "A" DIRECTION. PROVIDE 8" CAP & BUTTRESS ON WATER MAIN "A" (WM "A" 6+27.1). VALVES ON WATER MAIN "A" AND "B" SHALL REMAIN CLOSED.
 - WITH CROSS ASSEMBLY (ITEM 6) IN PLACE, RETURN WATER SERVICE TO THE CHURCH FACILITY, VIA CONTRACT 44-3641-D.
 - INSTALL REMAINING CONTRACT 24-5123-D UTILITIES, ITS WHC'S AND SHC'S, AND APPURTENANCES WITH THE EXCEPTION OF THE WORK IN THE LOCATION OF THE EXISTING CHURCH DRIVEWAY, I.E. WM "A" 4+50+/- THRU 6+27.1 AND SEWER MAIN SMH# - SMH12.
 - WITH THE STARLIGHT PLACE STREAM CROSSING AND ROAD IN-PLACE AND WITH PERMISSION FROM THE INSPECTOR, OPEN STARLIGHT PLACE CONNECTION FROM ALBETH ROAD TO TRAFFIC. CONTRACTOR SHALL CLOSE THE EXISTING DRIVEWAY ENTRANCE AT MARRIOTTVILLE ROAD AND SHIFT CHURCH INCOMING AND OUTGOING TRAFFIC TO ALBETH ROAD.
 - WITH TRAFFIC SUCCESSFULLY SHIFTED, BEGIN CONSTRUCTION OPERATIONS TO REMOVE CHURCH DRIVEWAY TO MARRIOTTVILLE ROAD.
 - REFER TO PHASE 2 DETAIL HEREON.
 - COMPLETE THE REMAINING PORTIONS OF CONTRACT 24-5123-D I.E. WM "A" 4+50+/- THRU 6+27.1 AND SEWER MAIN SMH# - SMH12.
 - AFTER INSTALLING DOGHOUSE MANHOLE 10, INSTALL 8" PLUG ON THE NEW 8" SEWER WITHIN THE MANHOLE, KEEPING THE PRIVATE CHURCH SERVICE IN OPERATION.
 - COMPLETE WATER & SEWER MAIN TESTING.
 - UPON APPROVAL OF THE IN-SERVICE INSPECTIONS FOR THE WATER MAIN, SHUT NEWLY INSTALLED 44-3641-D VALVE ON WESTERN SIDE OF 8"x8" CROSS AND MOVE CHURCH WATER SERVICE TO CONTRACT 24-5123-D FROM WATER MAIN "A".
 - UPON APPROVAL OF THE SEWER INSPECTIONS SHIFT SEWER SERVICE AT SMH-10 TO THE NEWLY INSTALLED MAIN CONTRACT 24-5123-D.
 - REMOVE PORTIONS OF CONTRACT 44-3641-D AND THE PRIVATE SEWER SERVICE TO CONTRACT 24-3447-D, SMH42 WITHIN THE BED OF THE CHURCH DRIVEWAY TO MARRIOTTVILLE ROAD.

UTILITY NOTE:
 EXISTING ELECTRIC, WATER AND SEWER SERVICE TO THE CHAPEL GATE CHURCH FACILITY SHALL REMAIN UNINTERRUPTED AT ALL TIMES. CONTRACTOR SHALL LOCATE AND PROTECT ELECTRIC AND FIBER OPTIC SERVICES PRIOR TO BEGINNING WORK.

NOTE:
 UNINTERRUPTED SERVICE FROM THE EXISTING COAX LINE, LOCATED OVERLAND NEAR THE STREAM, SHALL REMAIN AT ALL TIMES.

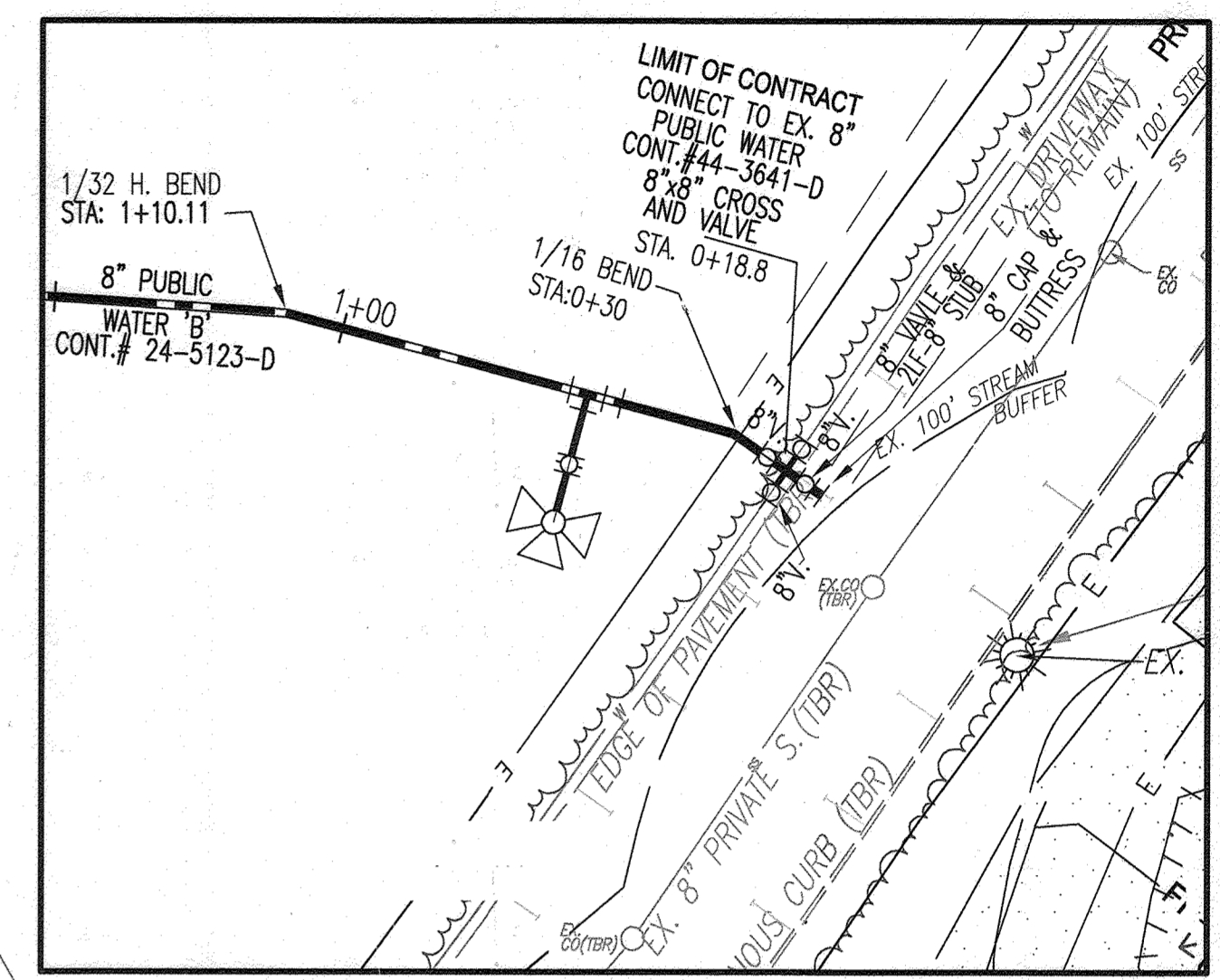
NOTE:
 ACCESS & UTILITY SERVICES TO THE CHAPEL GATE CHURCH FACILITY SHALL BE MAINTAINED AT ALL TIMES DURING CONSTRUCTION.

UTILITY NOTE:
 EXISTING ELECTRIC, WATER AND SEWER SERVICE TO THE CHAPEL GATE CHURCH FACILITY SHALL REMAIN UNINTERRUPTED AT ALL TIMES. CONTRACTOR SHALL LOCATE AND PROTECT ELECTRIC AND FIBER OPTIC SERVICES PRIOR TO BEGINNING WORK.

EXISTING CONDITION AND DEMOLITION PLAN
 SCALE: 1"=100'

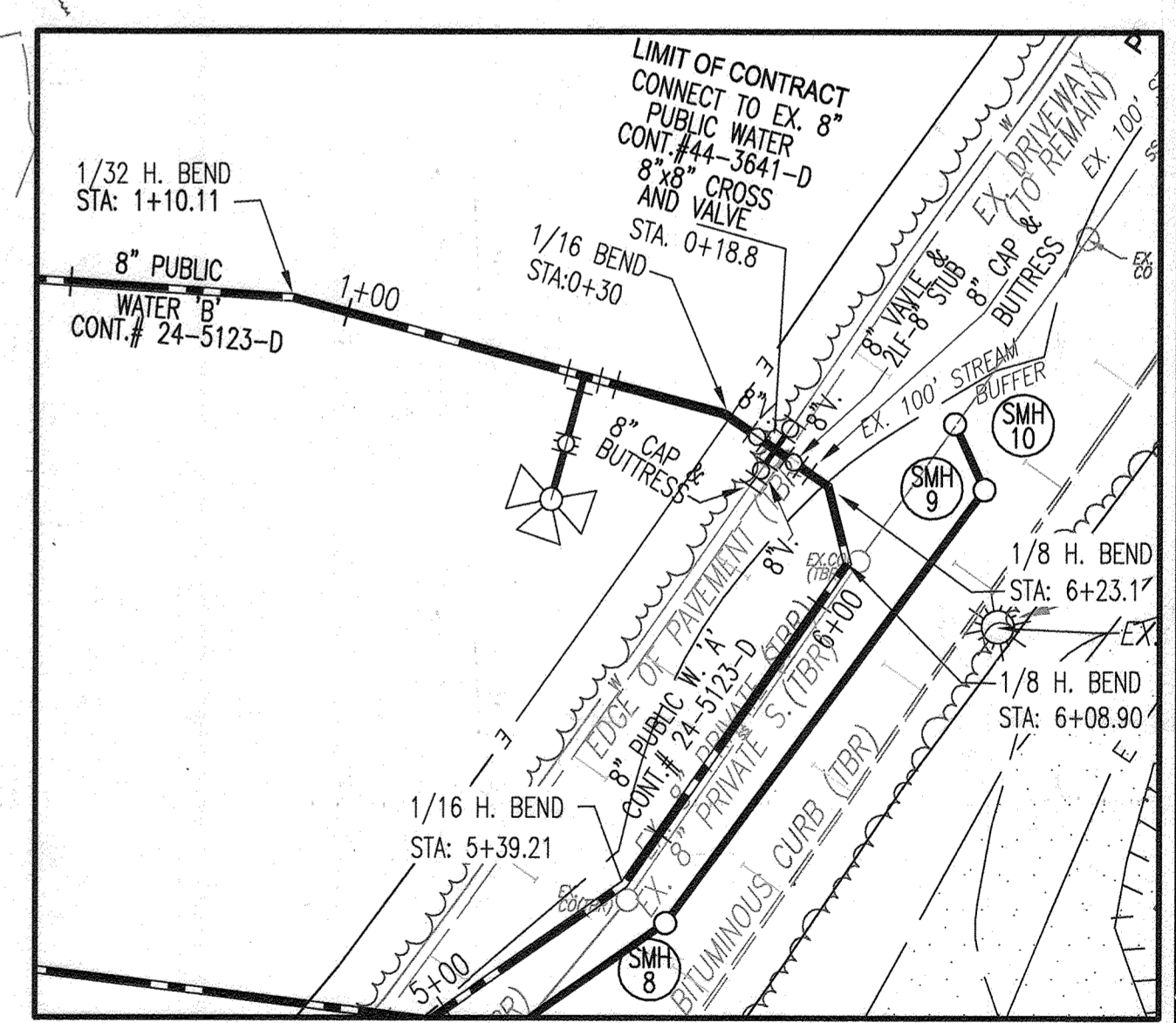
LEGEND:

- [Patterned Box] EXISTING PAVING/ GRAVEL TO BE REMOVED
- [Hatched Box] EXISTING EASEMENT TO BE REMOVED



PHASE 1 - CROSS INSTALL INLINE WITH EXISTING CONTRACT 44-3641-D

SCALE: 1"=30'
 REFER TO SEQUENCE OF CONSTRUCTION



PHASE 2 - WATER MAIN 'A' CONNECTION TO PHASE 1 CROSS @ CONTRACT 44-3641-D

SCALE: 1"=30'
 REFER TO SEQUENCE OF CONSTRUCTION

DEPARTMENT OF PUBLIC WORKS
 HOWARD COUNTY, MARYLAND

DATE: 9/17/2023

DEPARTMENT OF PLANNING & ZONING
 HOWARD COUNTY, MARYLAND

DATE: 9/14/23

VOGEL ENGINEERING
TIMMONS GROUP
 3300 NORTH RIDGE ROAD, SUITE 110, ELLICOTT CITY, MD 21043
 P: 410.461.7666 F: 410.461.8961 www.timmons.com

STATE OF MARYLAND
 PROFESSIONAL ENGINEER
 ROBERT H. VOGEL, PE No. 16193

NO.	REVISION	DATE
1	REVISE TO RELOCATE WATER MAIN 'A', 'D', AND A PORTION OF 'C' AND SEWER MANHOLES 6-10, 35-39, 22B AND 23-27 FROM PHASE 2 (24-5123-D) TO PHASE 1 (24-5123-D)	08-15-2023
2	REVISE TO RELOCATE WATER MAINS 'A' AND 'D' AND SEWER MAINS SMH#-SMH10 TO CHAPEL GATE WOODS - PHASE 2, CONTRACT 24-5123-D	04-17-2023
3	REVISE WATER TIE-IN LOCATION AT INTERSECTION OF STARLIGHT PLACE AND PRESBYTERIAN CHURCH DRIVEWAY	12-14-2022
4	REVISE LOCATION OF FIRE HYDRANT #4	09-23-2022
5	REVISE SITE LAYOUT, WHC AND SHC INVERTS.	03-25-2022

FINAL WATER AND SEWER CONSTRUCTION PLAN
CONTRACT 24-5123-D
EXISTING CONDITIONS AND DEMOLITION PLAN

600' SCALE MAP NO. 18 BLOCK NO. 10

CHAPEL GATE WOODS-PHASE 1
 LOTS 1-43, 88-118, 120-134, AND OPEN SPACE LOTS 135-137, PARCEL A AND NON-BUILDABLE PARCELS B & C

TAX MAP 16, GRID 10 ZONED: CEF-M PARCEL 110
 TAX MAP 16, GRID 10 ZONED: CEF-M PARCEL 421
 3RD ELECTION DISTRICT HOWARD COUNTY, MARYLAND

OWNER: CHAPEL GATE PRESBYTERIAN CHURCH, INC. 2600 MARRIOTTVILLE RD. MARRIOTTVILLE, MD 21104 (410) 442-5888

DEVELOPER: SECURITY DEVELOPMENT 8480 BALTIMORE NATIONAL PIKE SUITE 415 ELLICOTT CITY, MD 21041 410-465-4244 SDOPROPERTIES.COM

SCALE AS SHOWN
 SHEET 7 OF 7

REPLACEMENT MYLAR - AUGUST 15, 2023