

GENERAL NOTES

- PART I**
- APPROXIMATE LOCATIONS OF EXISTING MAINS ARE SHOWN. THE CONTRACTOR SHALL TAKE ALL NECESSARY PRECAUTIONS TO PROTECT EXISTING MAINS AND SERVICES AND MAINTAIN UNINTERRUPTED SERVICE. ANY DAMAGE INCURRED SHALL BE REPAIRED IMMEDIATELY TO THE SATISFACTION OF THE ENGINEER AT THE CONTRACTOR'S EXPENSE.
 - TOPOGRAPHY FIELD SURVEYS WERE PERFORMED ON MARCH 1998 BY POTOMAC AERIAL SURVEYS; AND BY A FIELD-RUN TOPOGRAPHIC SURVEY WITH 2-FOOT CONTOUR INTERVALS PREPARED BY VOGEL ENGINEERING + TIMMONS GROUP, DATED JULY 05, 2017.
 - HORIZONTAL AND VERTICAL SURVEY CONTROLS:
THE COORDINATES SHOWN ON THE DRAWINGS ARE BASED ON MARYLAND STATE REFERENCE SYSTEM NAD '83/'91 AS PROJECTED BY HOWARD COUNTY GEODETIC CONTROL STATION 43B2 AND 43B6.
ALL VERTICAL CONTROLS ARE BASED ON NAVD'88. VERTICAL CONTROLS PROVIDED ON DRAWINGS ARE:
GEODETIC SURVEY CONTROL 43B2 (N 551,654.993/E 1,378,176.951)
BRASS DISC SET ON TOP OF A CONCRETE MONUMENT.
GEODETIC SURVEY CONTROL 43B6 (N 550,601.597/E 1,376,866.072)
BRASS DISC SET ON TOP OF A CONCRETE MONUMENT.
 - ALL PIPE ELEVATIONS SHOWN ARE INVERT ELEVATIONS UNLESS OTHERWISE NOTED.
 - CLEAR ALL UTILITIES BY A MINIMUM OF 12 INCHES. CLEAR ALL POLES BY 5'-0" MINIMUM OR TUNNEL AS REQUIRED UNLESS OTHERWISE NOTED. THE OWNER HAS CONTACTED THE UTILITY COMPANIES AND HAS MADE ARRANGEMENTS FOR BRACING OF POLES AS SHOWN ON DRAWINGS. IN THE EVENT THE CONTRACTOR'S WORK REQUIRES THE BRACING OF ADDITIONAL POLES, ANY COST INCURRED BY THE OWNER FOR BRACING OF ADDITIONAL POLES OR DAMAGES SHALL BE DEDUCTED FROM MONIES OWED THE CONTRACTOR. THE CONTRACTOR SHALL COORDINATE WITH THE UTILITY COMPANIES TO SCHEDULE THE BRACING OF THE POLES.
 - FOR DETAILS NOT SHOWN ON THE DRAWINGS, AND FOR MATERIALS AND CONSTRUCTION METHODS USE, HOWARD COUNTY DESIGN MANUAL VOLUME IV, STANDARD SPECIFICATIONS AND DETAILS FOR CONSTRUCTION (LATEST EDITION). THE CONTRACTOR SHALL HAVE A COPY OF VOLUME IV ON THE JOB.
 - WHERE TEST PITS HAVE BEEN MADE ON EXISTING UTILITIES, THEY ARE NOTED BY THE SYMBOL AT THE LOCATIONS OF THE TEST PITS. A NOTE OR NOTES CONTAINING THE RESULTS OF THE TEST PIT OR PITS IS INCLUDED ON THE DRAWINGS. EXISTING UTILITIES IN THE VICINITY OF THE PROPOSED WORK FOR WHICH TEST PITS HAVE NOT BEEN DUG SHALL BE LOCATED BY THE CONTRACTOR TWO WEEKS IN ADVANCE OF CONSTRUCTION OPERATION AT HIS OWN EXPENSE.
 - THE CONTRACTOR SHALL NOTIFY THE FOLLOWING UTILITY COMPANIES OR AGENCIES AT LEAST FIVE WORKING DAYS BEFORE STARTING WORK SHOWN ON THESE PLANS:
AT&T 1-800-252-1133
BGE (CONSTRUCTION SERVICES) 410-637-8713
BGE (EMERGENCY) 410-885-0123
BUREAU OF UTILITIES 410-313-4900
COLONIAL PIPELINE CO 410-795-1390
MISS UTILITY 1-800-257-7777
STATE HIGHWAY ADMINISTRATION 410-531-5533
VERIZON 1-800-743-0033
 - TREES AND SHRUBS ARE TO BE PROTECTED FROM DAMAGE TO THE MAXIMUM EXTENT. TREES AND SHRUBS LOCATED WITHIN THE CONSTRUCTION STRIP ARE NOT TO BE REMOVED OR DAMAGED BY THE CONTRACTOR.
 - THE CONTRACTOR SHALL STAKE AND MARK THE LINE OF EXCAVATION. PAYMENT FOR SUCH REMOVAL SHALL BE INCLUDED IN THE UNIT PRICE BID FOR THE CONSTRUCTION OF THE MAIN.
 - THE CONTRACTOR SHALL NOTIFY THE BUREAU OF HIGHWAYS, HOWARD COUNTY, AT (410) 313-7450 AT LEAST FIVE WORKING DAYS BEFORE OPEN CUTTING OR BORING/JACKING OF ANY COUNTY ROAD FOR LAYING WATER/SEWER MAINS OR HOUSE CONNECTIONS. THE APPROVAL OF THESE DRAWINGS WILL CONSTITUTE COMPLIANCE WITH DPW REQUIREMENTS PER SECTION 18.114(c) OF THE HOWARD COUNTY CODE.

PART II - WATER

- ALL WATER MAINS SHALL BE C-900 PVC (DR-18) UNLESS OTHERWISE NOTED.
- TOPS OF ALL WATER MAINS SHALL HAVE A MINIMUM OF 3'-6" OF COVER UNLESS OTHERWISE NOTED.
- VALVES ADJACENT TO TEES SHALL BE STRAPPED TO TEES.
- ALL FITTINGS SHALL BE BUTTRESSED OR ANCHORED WITH CONCRETE IN ACCORDANCE WITH STANDARD DETAILS UNLESS OTHERWISE PROVIDED FOR ON THE DRAWINGS.
- FIRE HYDRANTS SHALL BE SET TO THE BURY LINE ELEVATIONS SHOWN ON THE DRAWINGS. ALL FIRE HYDRANTS SHALL BE INSTALLED IN ACCORDANCE WITH STANDARD DETAILS. THE SOIL AROUND THE FIRE HYDRANT SHALL BE COMPACTED IN ACCORDANCE WITH SECTION 1000 AND SECTION 1005 OF THE STANDARD SPECIFICATIONS.
- THE CONTRACTOR SHALL NOT OPERATE ANY WATER MAIN VALVES ON THE EXISTING WATER SYSTEM.
- TRACER WIRE AND CONTINUITY TEST STATIONS SHALL BE INSTALLED ON ALL DIP AND PVC WATER MAINS IN ACCORDANCE WITH THE HOWARD COUNTY DESIGN MANUAL.
- FOR PVC WATER MAINS, ALL RECORDS FOR THE QUALITY CONTROL AND QUALIFICATION TEST REQUIREMENTS NOTED IN SECTION 5.1 OF THE AWWA STANDARD SPECIFICATIONS FOR THE PIPE SHALL BE SUBMITTED WITH THE PIPE MATERIAL CERTIFICATIONS OR SHOP DRAWINGS PRIOR TO APPROVAL OF THE MATERIAL FOR USE. THE TEST RECORDS SHALL BE FOR THE PIPE TO BE INSTALLED UNDER THIS CONTRACT. ALL PVC PIPE SHALL CONTAIN MARKINGS TO ALLOW CROSS REFERENCING OF THE PIPE SUPPLIED TO THE REST RECORDS RECEIVED.
- UNLESS OTHERWISE NOTED ON THE PLANS OR IN THE SPECIFICATIONS, SACRIFICIAL ANODES SHALL BE INSTALLED ON ALL VALVES AND METALLIC FITTINGS USED WITH PVC WATER MAINS IN ACCORDANCE WITH VOLUME IV, STANDARD SPECIFICATIONS AND DETAILS FOR CONSTRUCTION. SEVENTEEN (17) POUND MAGNESIUM ANODES SHALL BE INSTALLED ON ALL VALVES AND DUCTILE IRON FITTINGS INCLUDING RESTRAINTS AND HARNESSSES. TWELVE (12) POUND ZINC ANODES SHALL BE INSTALLED ON ALL STAINLESS STEEL FITTINGS AND SADDLES USED WITH PVC MAINS. ALL "TEES" USED WITH PVC MAINS SHALL BE DUCTILE IRON.
- PROPER ASSEMBLY OF GASKETED PVC PIPE JOINTS: THE MANUFACTURER'S INSERTION LINE OF GASKETED PVC PIPE JOINTS INDICATES THE MAXIMUM DEPTH OF INSERTION OF THE SPIGOT INTO THE BELL. AFTER ASSEMBLY OF THE JOINT, THE INSERTION LINE SHALL REMAIN VISIBLE. DUAL INSERTION LINES ON GASKETED PVC PIPE INDICATE THE MAXIMUM AND MINIMUM DEPTH OF INSERTION OF THE SPIGOT INTO THE BELL. THE CONTRACTOR SHALL NOT OVER INSERT OR OVER HOME THE SPIGOT INTO THE BELL OF PVC PIPE.
- ALL CHANGES IN HORIZONTAL OR VERTICAL DIRECTION OF PVC WATER PIPE SHALL BE MADE WITH STANDARD BENDS, 5-DEGREE SWEEPS OR HIGH DEFLECTION (HD) COUPLINGS. NO BENDING OF THE PIPE OR DEFLECTING OF PVC PIPE JOINTS IS PERMITTED. WHERE HIGH DEFLECTION COUPLINGS OR 5-DEGREE SWEEPS ARE PERMITTED, THE CONTRACTOR SHALL PROVIDE ONE FULL PIPE LENGTH (20-FOOT LONG) ON EITHER SIDE OF THE HIGH DEFLECTION COUPLING OR 5-DEGREE SWEEP. THE CONTRACTOR SHALL USE A VIBRATORY PLATE COMPACTOR OR OTHER APPROVED MEANS TO THOROUGHLY COMPACT THE #57 STONE ON BOTH SIDES OF THE HIGH DEFLECTION COUPLING OR 5-DEGREE SWEEP, TAKING CARE NOT TO USE COMPACTOR EQUIPMENT DIRECTLY OVER THE FITTING.

PVC HIGH DEFLECTION COUPLINGS SHALL BE LIMITED TO A TOTAL DEFLECTION OF 3-DEGREES 1-1/2- DEGREE ON EITHER END OF THE COUPLING). SHALL BE RATED FOR A MINIMUM 200 PSI MEETING THE REQUIREMENTS OF AWWA C900. SHALL HAVE A MINIMUM LAY LENGTH OF 9-INCHES AND SHALL HAVE CENTER STOPS. PVC HIGH DEFLECTION COUPLINGS SHALL BE CERTAINTED PVC HIGH DEFLECTION (HD) STOP COUPLINGS OR EQUAL.

FIVE DEGREE SWEEPS SHALL BE BELL BY SPIGOT, RATED FOR A MINIMUM 225 PSI, DR18 MEETING THE REQUIREMENTS OF AWWA C900 AND SHALL BE MULTI FITTINGS (PEX) BLUE BRUTE DR18 OR EQUAL.

- WHEN PVC HIGH DEFLECTION COUPLINGS OR PVC 5-DEGREE SWEEPS ARE USED TO FACILITATE CHANGES IN HORIZONTAL OR VERTICAL ALIGNMENTS OF AWWA C-900 PVC PIPELINES, THE CONTRACTOR SHALL INSTALL DEVICES FOR THE PREVENTION OF OVER-INSERTION OF THE PVC PIPE SPIGOTS OR PLAIN ENDS INTO THE BELL JOINT ON BOTH SIDES OF THE HIGH DEFLECTION COUPLINGS AND 5 DEGREE SWEEPS. BELL STOPS SHALL BE PLACED AT THE PROPER INSERTION LINE FOR THE FITTING. THE BELL STOP SHALL BE MANUFACTURED OF DUCTILE IRON AND INCORPORATE AN EXPANSION RETENTION SPRING TO ALLOW FOR PIPE EXPANSION AND CONTRACTION. THE BELL STOPS SHALL BE SERIES 5000 MEGA-STOP, AS MANUFACTURED BY EBAA IRON INC. OR APPROVED EQUAL.

PART III - SEWER

- ALL SEWER MAINS SHALL BE D.I.P. OR P.V.C UNLESS OTHERWISE NOTED.
- ALL MANHOLES SHALL BE 4'-0" INSIDE DIAMETER UNLESS OTHERWISE NOTED.
- FORCE MAINS SHALL BE D.I.P. ONLY.
- MANHOLES SHOWN WITH 12" AND 16" WALLS ARE FOR BRICK MANHOLES ONLY.
- MANHOLES DESIGNATED W.T. IN PLAN AND PROFILE SHALL HAVE WATERTIGHT FRAME AND COVERS, STANDARD DETAIL G5.52. WHERE WATERTIGHT FRAME AND COVER IS USED, SET TOP OF FRAME 1'-6" ABOVE FINISHED GRADE UNLESS OTHERWISE NOTED ON THE DRAWINGS.
- HOUSE(S) WITH THE SYMBOL "C.N.S." INDICATES THAT CELLAR CANNOT BE SERVED.

THIS DEVELOPMENT IS APPROVED FOR SOIL EROSION AND SEDIMENT CONTROL BY THE HOWARD SOIL CONSERVATION DISTRICT.

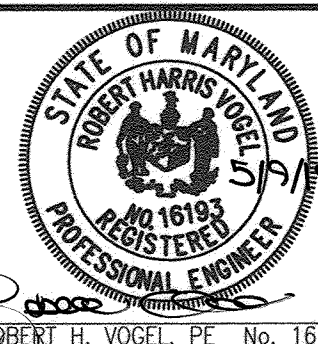
John A. Blanton 5/24/19
SOIL CONSERVATION DISTRICT DATE

SEDIMENT CONTROL MEASURES WILL BE IMPLEMENTED IN ACCORDANCE WITH SECTION 308 OF THE SPECIFICATIONS AND WITH SITE DEVELOPMENT PLAN SDP-18-022.

DEPARTMENT OF PUBLIC WORKS HOWARD COUNTY, MARYLAND
DEPARTMENT OF PLANNING & ZONING HOWARD COUNTY, MARYLAND

Carol 5-12-19 DATE
John A. Blanton 6-3-19 DATE
CHIEF, BUREAU OF UTILITIES DATE CHIEF, DEVELOPMENT ENGINEERING DIVISION DATE

ROBERT H. VOGEL ENGINEERING, INC.
ENGINEERS • SURVEYORS • PLANNERS
3300 N. RIDGE ROAD, SUITE 110 TEL: 410.461.7666
ELLICOTT CITY, MD 21043 FAX: 410.461.8961



PROFESSIONAL CERTIFICATE
I HEREBY CERTIFY THAT THESE DOCUMENTS WERE PREPARED OR APPROVED BY ME AND THAT I AM A DULY LICENSED PROFESSIONAL ENGINEER UNDER THE LAWS OF THE STATE OF MARYLAND. LICENSE NO. 16193 EXPIRATION DATE: 09-27-2020
DRN: KG DES: DZE
CHK: RHV
DATE: MAY 2019

BY: *RHV* NO. 1 REVISION TO DELACOUR-PHASE I AND REDUCE UNITS FROM 127 TO 66 DATE: 05/05/20

FINAL WATER AND SEWER CONSTRUCTION PLAN CONTRACT 14-5044-D COVER SHEET

600' SCALE MAP NO. 43 BLOCK NO. 4

DELACOUR AT BLUE STREAM-PHASE I
LOTS 1-51 OPEN SPACE LOT 151, AND PARCELS A-C
A RE-SUBDIVISION OF BUILDABLE BULK PARCEL L-4
TOWNHOMES - SECTION 3
ZONED: CAC-CL1

TAX MAP 43 GRID 4 PARCEL 14
1ST ELECTION DISTRICT HOWARD COUNTY, MARYLAND
SCALE AS SHOWN SHE' 1 OF 4

FINAL WATER AND SEWER CONSTRUCTION PLAN

DELACOUR AT BLUE STREAM-PHASE 1

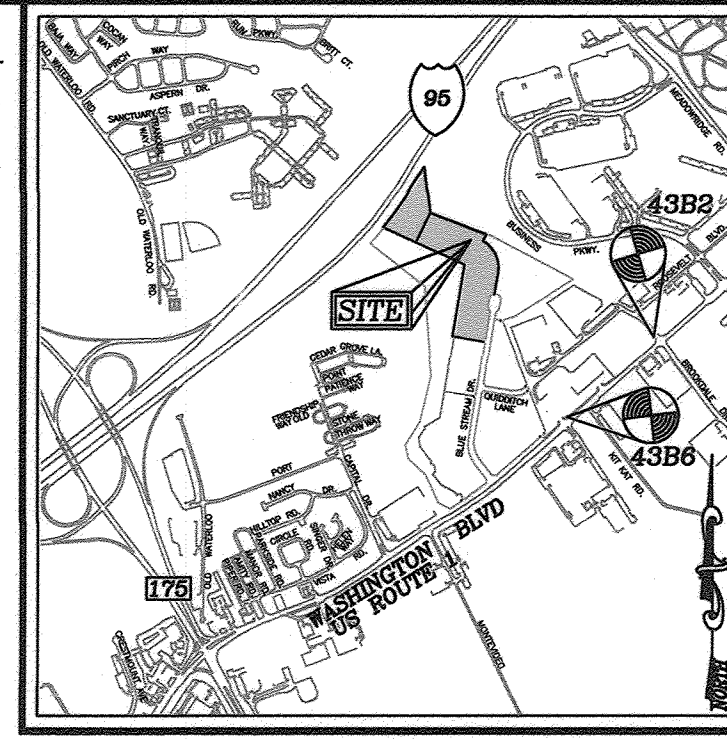
LOTS 1-51 OPEN SPACE LOT 151, AND PARCELS A-C A RE-SUBDIVISION OF BUILDABLE BULK PARCEL L-4 TOWNHOMES - SECTION 3

CONTRACT 14-5044-D

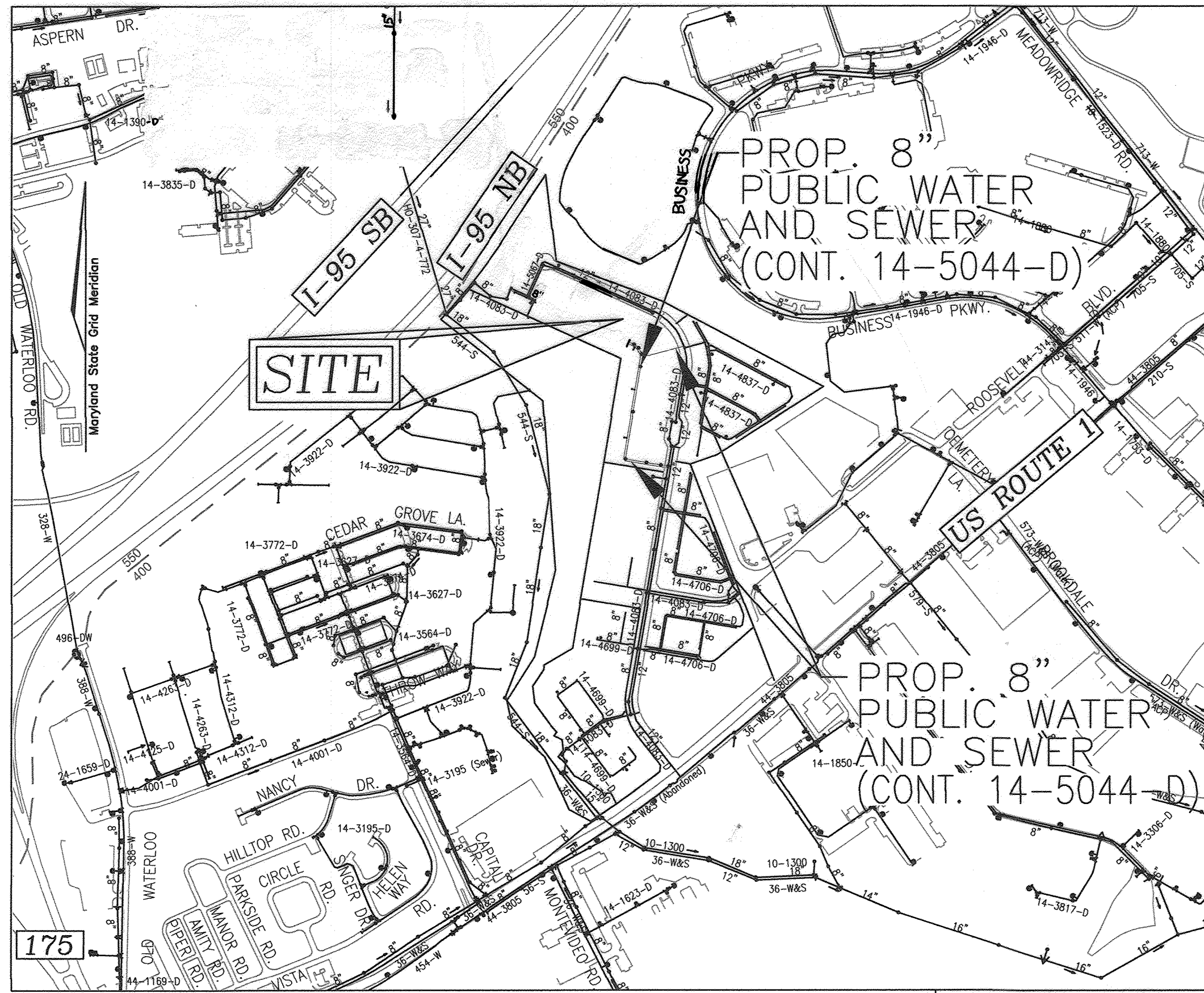
HOWARD COUNTY, MARYLAND

BENCHMARKS

HOWARD COUNTY BENCHMARK 43B2	N 551,654.993	E 1,378,176.951	ELEV.: 209.601'
HOWARD COUNTY BENCHMARK 43B6	N 550,601.597	E 1,376,866.072	ELEV.: 210.555'



VICINITY MAP
SCALE: 1"=2000'
ADC MAP/GRID NO: 34/E6



LOCATION MAP
SCALE: 1"=600'

WATER ZONE:	400
TEST GRADIENT:	677
TEST PRESSURE:	203.27

GENERAL NOTES:

PART IV - DESIGN MANUAL WAIVER APPROVALS

- THIS PLAN IS SUBJECT TO A DESIGN MANUAL WAIVER (DMW2-18-020) TO DESIGN MANUAL VOLUME II, APPROVED 10/18/18; TO SECTION 5.4.9.5 WHICH REQUIRES A MINIMUM 10' HORIZONTAL CLEARANCE BETWEEN ANY PERMANENT STRUCTURE AND THE EDGE OF A PUBLIC UTILITY EASEMENT.
IMPACTS INCLUDE:
A. STORM DRAIN STRUCTURES:
1-4, MH-28, 1-8, 1-6, 1-10, 1-9, 1-12, 1-16, 1-30, 1-34, 1-46, 1-27, 1-28, AND 1-49 SHOWN ON SDP-18-022.
B. UNITS:
5-10, 11, 13, 23-30, 35-44, 47-48, 51-52, 55-56, 62, 63, 75, 76, 93, 94, 174, 176, 178, AND 180 SHOWN ON SDP-18-022.
- THIS PLAN IS SUBJECT TO A DESIGN MANUAL WAIVER (DMW2-19-010) TO THE FOLLOWING DESIGN MANUALS VOLUME II; WAIVER REQUEST WAS NOT APPROVED 04/25/19; TO SECTION 4.5.F WHICH REQUIRES APPROVAL FROM THE DEPARTMENT OF PUBLIC WORKS (DPW) FOR THE USE OF TWIN SEWER HOUSE CONNECTIONS PER COUNTY DETAIL S-2.14.

TYPE OF BUILDING :	RESIDENTIAL
NO. OF APARTMENT BUILDINGS :	-
NO. OF TOWNHOUSE BUILDINGS :	66
NO. OF SINGLE SEWER HOUSE CONNECTIONS :	81
NO. OF TWIN SEWER HOUSE CONNECTIONS :	0
NO. OF SINGLE WATER HOUSE CONNECTIONS :	9
NO. OF TWIN WATER HOUSE CONNECTIONS :	36
SEWER SHED :	PATAPSCO
TREATMENT PLANT :	PATAPSCO RIVER

LEGEND

EXISTING TREELINE	
PROPOSED TREELINE	
EXISTING WATER MAIN	
PROPOSED WATER MAIN	
FIRE HYDRANT	
PROPOSED VALVE	
PROPOSED TEE	
PROPOSED STORM DRAIN	
PROPOSED SEWER MAIN	
EXISTING STORM DRAIN	
EXISTING SEWER	
SEWER MANHOLE	
PRIVATE WATER HOUSE CONNECTION	
PRIVATE SEWER	
PROPOSED SIGN	
PROPOSED LIGHT	

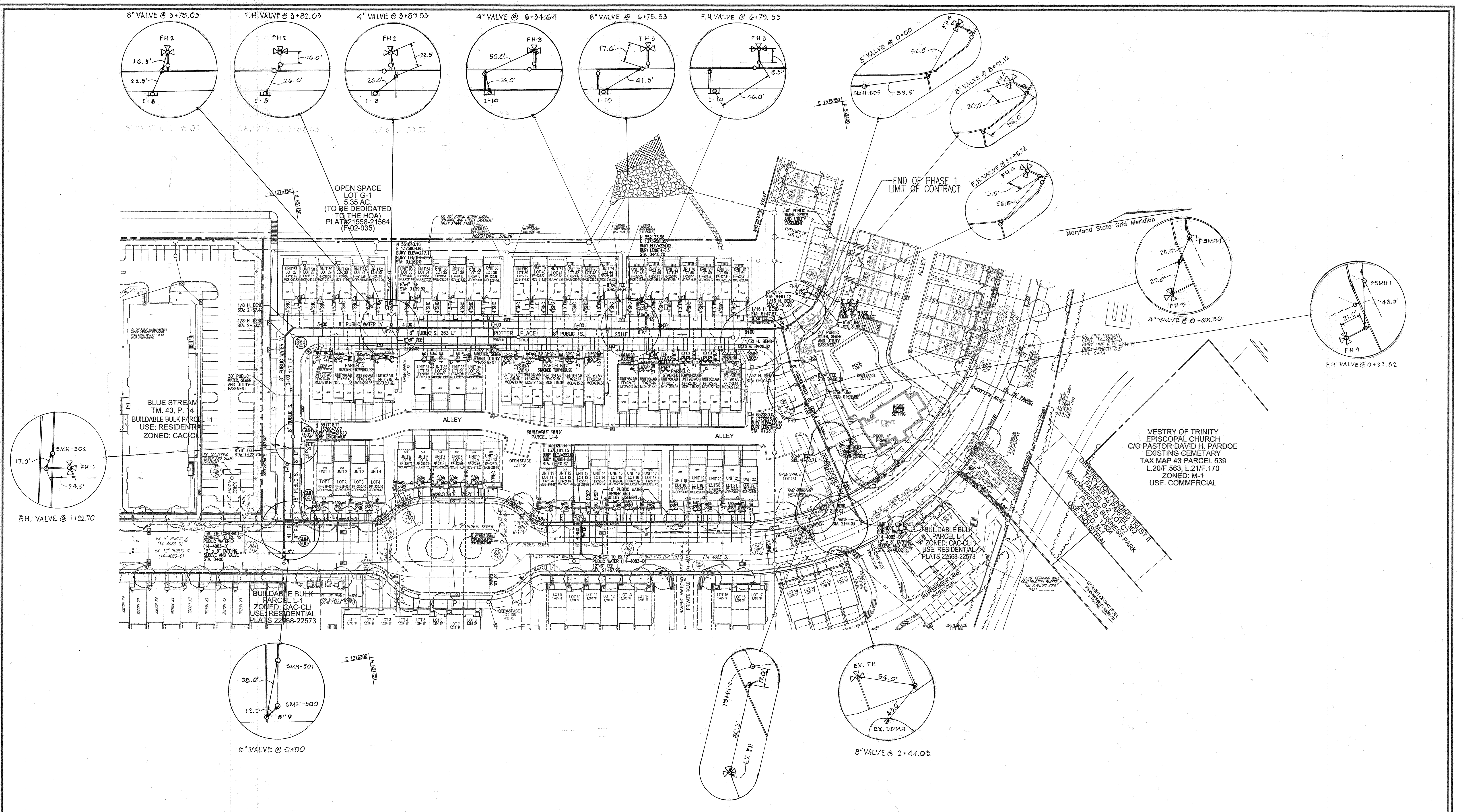
QUANTITIES

NAME OF UTILITY CONTRACTOR :				
SURVEY AND DRAFTING DIVISION AS-BUILT DATE :				
ITEMS	QUANTITIES ESTIMATED	AS-BUILT		
		QUANTITIES	TYPE	MANUFACTURER/SUPPLIER
WATER				
8" WATER C-900 PVC	1,152 LF	1150	C-900	National Pipe and Plastics
6" WATER C-900 PVC	138 LF	135	C-900	National Pipe and Plastics
4" WATER C-900 PVC	71 LF	75	C-900	National Pipe and Plastics
12" X 6" TAPPING SLEEVE	2 EA	2	A-65 95	Smith Blair
12" X 6" TEE	1 EA	1	C-153	Tyler/Union
8" X 8" TEE	1 EA	1	C-153	Tyler/Union
8" X 6" TEE	5 EA	5	C-153	Tyler/Union
8" X 4" TEE	4 EA	4	C-153	Tyler/Union
FIRE HYDRANT	6 EA	6	A-428	Mueller Company
8" VALVE	6 EA	6	A236123	Mueller Company
6" VALVE	6 EA	6	A236123	Mueller Company
4" VALVE	4 EA	4	A236123	Mueller Company
8" CAP	1 EA	1	C-153	Tyler/Union
8" - 1/32 H. BEND	3 EA	3	C-153	Tyler/Union
8" - 1/16 H. BEND	2 EA	2	C-153	Tyler/Union
8" - 1/8 H. BEND	2 EA	2	C-153	Tyler/Union
1-1/2" WVC	258 LF	1420	Type-K	Mueller Company
1" OUTSIDE METER VAULT	45 EA	45	-	Horne Concrete
SEWER				
STANDARD MANHOLE	6 EA	6	-	Contractors Precast
TYPE 'A' DROP	1 EA	1	-	Contractors Precast
SEWER CLEANOUT	81 EA	81	-	Horne Concrete
8" PVC SEWER	753 LF	765	-	National Pipe and Plastics
4" SHC	1,941 LF	1962	-	National Pipe and Plastics

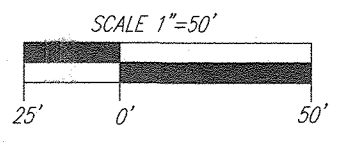
PUBLIC UTILITY NOTE:

THE COUNTY SHALL BEAR ABSOLUTELY NO RESPONSIBILITY FOR THE RECONSTRUCTION, REPAIR OR REMEDIAL MAINTENANCE REQUIRED DUE TO ANY DAMAGE TO PRIVATE UTILITIES INCLUDING, BUT NOT LIMITED TO STORM DRAINS, STORM DRAIN STRUCTURES, (EG. INLETS AND MANHOLES), AND OTHER PRIVATE SYSTEMS OR FEATURES RESULTING FROM OR INCURRED DURING MAINTENANCE AND/OR REPAIR OF THE PUBLIC WATER, SEWER OR UTILITIES. ANY COST INCURRED BY THE COUNTY THAT IS ASSOCIATED WITH RECONSTRUCTION OF PRIVATE UTILITIES AND STRUCTURES FOLLOWING MAINTENANCE OF THE PUBLIC UTILITIES, BY THE COUNTY, SHALL BE THE RESPONSIBILITY OF THE OWNER OR ITS SUCCESSORS OR ASSIGNS. THE AFOREMENTIONED INCLUDES PRIVATE UTILITIES AND OR STRUCTURE PERMITTED WITHIN THE EASEMENTS OR WITHIN THE 10-FOOT EASEMENT SETBACK VIA APPROVED WAIVER FROM THE DEPARTMENT OF PUBLIC WORKS.

OWNER/DEVELOPER
BLUE STREAM 3 LLC
PO BOX 416
ELLICOTT CITY, MD 21041
C/O: ARNOLD SAGNER
410-465-2020



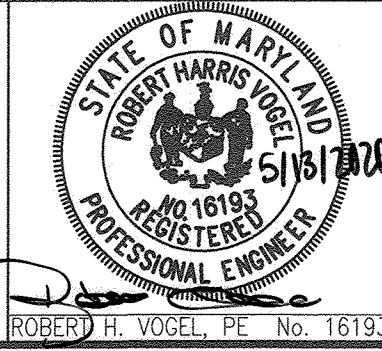
LAYOUT PLAN
SCALE: 1"=50'



DEPARTMENT OF PUBLIC WORKS
HOWARD COUNTY, MARYLAND
[Signature]
6-17-2020
DATE

DEPARTMENT OF PLANNING & ZONING
HOWARD COUNTY, MARYLAND
[Signature]
6-25-20
DATE

VOGEL ENGINEERING
TIMMONS GROUP
3300 NORTH RIDGE ROAD, SUITE 110, ELLICOTT CITY, MD 21043
P: 410.461.7666 F: 410.461.8961 www.timmons.com



DRN	CHK	DATE	DES	DZE	DATE
1	RHV	MAY 2020	RHV	DZE	05/05/20

**FINAL WATER AND SEWER
CONSTRUCTION PLAN
CONTRACT 14-5044-D
LAYOUT PLAN**

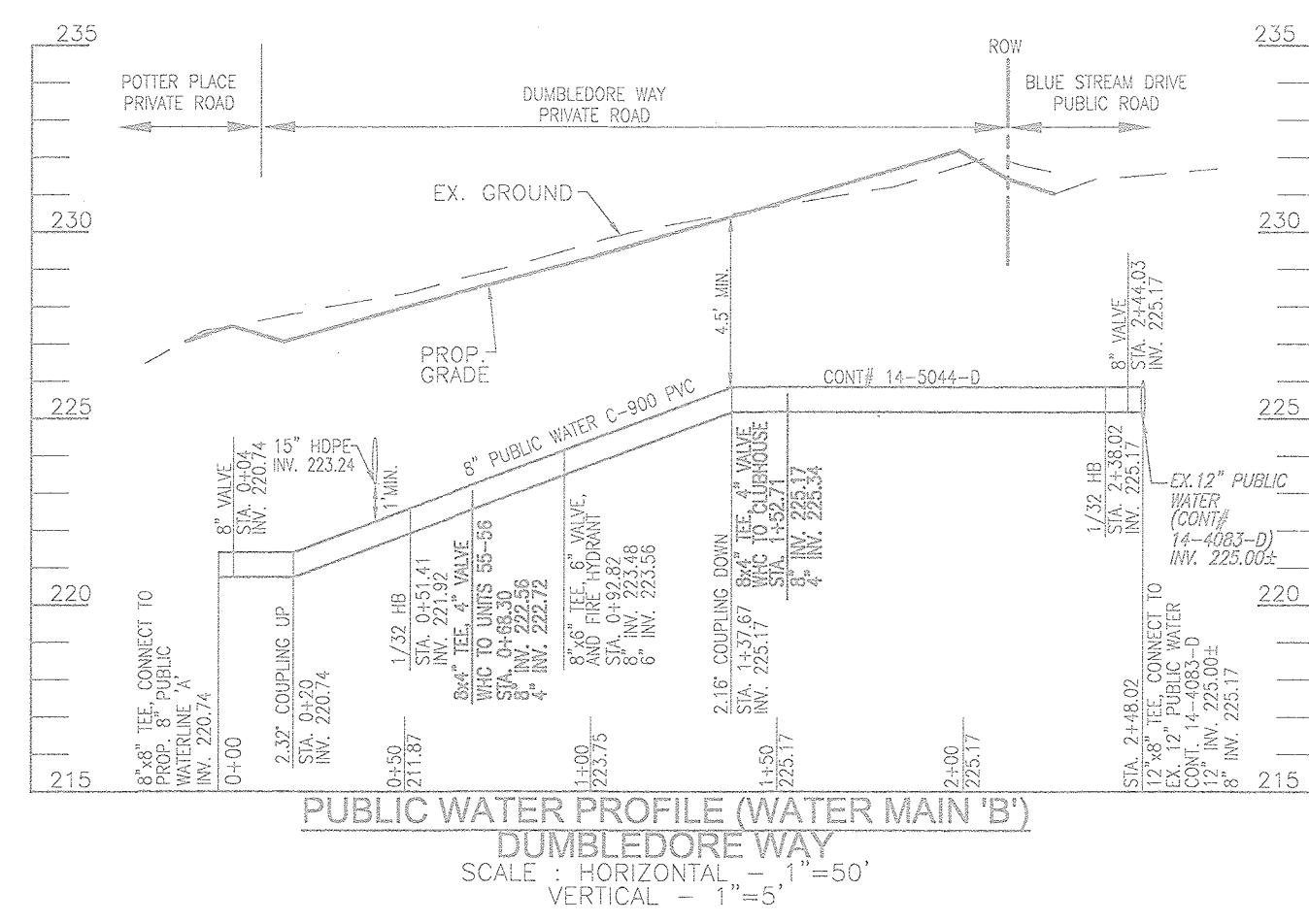
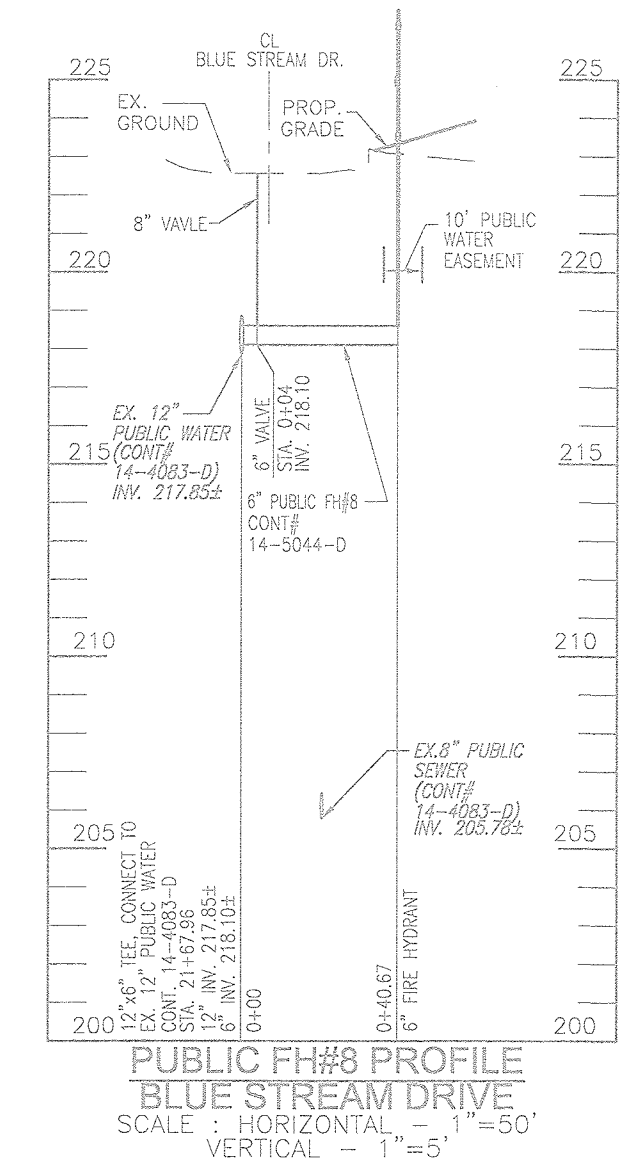
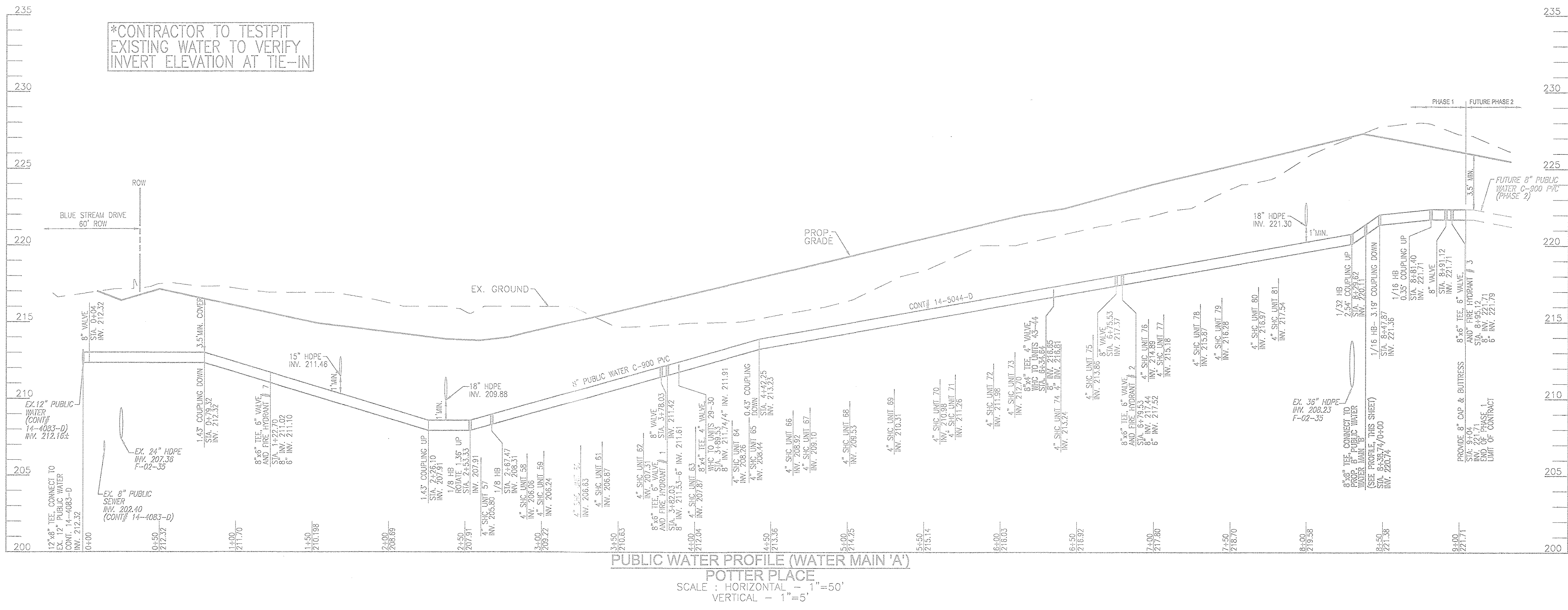
DELACOUR AT BLUE STREAM-PHASE 1
LOTS 1-51, OPEN SPACE LOT 151, AND PARCELS A-C
A RE-SUBDIVISION OF BUILDABLE BULK PARCEL L-4
TOWNHOMES - SECTION 3
ZONED: CAC-CLI

OWNER/DEVELOPER
BLUE STREAM 3 LLC
PO BOX 416
ELLICOTT CITY, MD 21041
C/O: ARNOLD SAGNER
410-465-2020

SCALE AS SHOWN
SHEET 2 OF 4

TAX MAP 43 GRID 4
1ST ELECTION DISTRICT
PARCEL 14
HOWARD COUNTY, MARYLAND

WATER HOUSE CONNECTION AS-BUILT TABLE												
LOT/PARCEL	UNIT	STREET ADDRESS	LOCATION DIMENSION 1	LOCATION DIMENSION 2	LOT/PARCEL	UNIT	STREET ADDRESS	LOCATION DIMENSION 1	LOCATION DIMENSION 2			
1	1	7844 BLUE STREAM DRIVE	SMH - 500	50.5	SMH - 112	50.5	PARCEL C 954A	7854-B POTTER PLACE	I - 10	38.0	FH Sta. 6+79.53 45.0	
2	2	7844 BLUE STREAM DRIVE	SMH - 500	75.5	SMH - 112	50.5	PARCEL C 954B	7854-B POTTER PLACE	I - 10	38.0	FH Sta. 6+79.53 45.0	
3	3	7844 BLUE STREAM DRIVE	SMH - 500	75.5	SMH - 112	50.5	PARCEL C 958A	7858-B POTTER PLACE	I - 10	38.0	FH Sta. 6+79.53 42.0	
4	4	7851 BLUE STREAM DRIVE	SMH - 500	107.0	SMH - 112	36.0	PARCEL C 958B	7858-B POTTER PLACE	I - 10	38.0	FH Sta. 6+79.53 42.0	
5	5	7855 BLUE STREAM DRIVE	SMH - 112	81.0	SMH - 113	40.0	PARCEL C 958A	7858-B POTTER PLACE	SMH - 505	75.0	I - 12 50.0	
6	6	7857 BLUE STREAM DRIVE	SMH - 112	81.0	SMH - 113	43.5	PARCEL C 958B	7858-B POTTER PLACE	SMH - 505	75.0	I - 12 50.0	
7	7	7859 BLUE STREAM DRIVE	SMH - 112	81.0	SMH - 113	43.5	PARCEL C 960A	7860-B POTTER PLACE	SMH - 505	60.0	I - 12 70.0	
8	8	7861 BLUE STREAM DRIVE	SMH - 113	67.0	SMH - 114	57.5	PARCEL C 960B	7860-B POTTER PLACE	SMH - 505	60.0	FH Sta. 6+79.53 70.0	
9	9	7863 BLUE STREAM DRIVE	SMH - 113	67.0	SMH - 114	57.5	PARCEL C 962A	7862-B POTTER PLACE	SMH - 505	28.0	FH Sta. 6+79.53 32.0	
10	10	7865 BLUE STREAM DRIVE	SMH - 113	67.0	SMH - 114	42.5	PARCEL C 962B	7862-B POTTER PLACE	SMH - 505	28.0	FH Sta. 6+79.53 32.0	
11	11	7869 BLUE STREAM DRIVE	SMH - 114	45.5	SMH - 115	55.5	PARCEL C 964A	7864-B POTTER PLACE	SMH - 505	15.0	I - 12 10.0	
12	12	7871 BLUE STREAM DRIVE	SMH - 114	83.0	SMH - 115	89.0	PARCEL C 964B	7864-B POTTER PLACE	SMH - 505	15.0	I - 12 10.0	
13	13	7873 BLUE STREAM DRIVE	SMH - 114	8.0	SMH - 115	78.0	27	57	7811 POTTER PLACE	SMH - 503	27.0	I - 3 44.5
14	14	7875 BLUE STREAM DRIVE	FH Sta. 21+67	36.0	SMH - 114	44.0	28	58	7815 POTTER PLACE	SMH - 503	27.0	I - 3 44.5
15	15	7877 BLUE STREAM DRIVE	FH Sta. 21+67	36.0	SMH - 114	44.0	29	59	7819 POTTER PLACE	SMH - 503	28.0	FH Sta. 3+81.03 60.0
16	16	7879 BLUE STREAM DRIVE	FH Sta. 21+67	76.0	SMH - 114	34.0	30	60	7817 POTTER PLACE	SMH - 503	28.0	FH Sta. 3+81.03 60.0
17	17	7881 BLUE STREAM DRIVE	FH Sta. 21+67	76.0	SMH - 114	34.0	31	61	7816 POTTER PLACE	SMH - 503	28.0	FH Sta. 3+81.03 60.0
18	18	7885 BLUE STREAM DRIVE	SMH - 116	72.0	SMH - 117	31.5	32	62	7821 POTTER PLACE	SMH - 503	28.0	FH Sta. 3+81.03 60.0
19	19	7887 BLUE STREAM DRIVE	SMH - 116	72.0	SMH - 117	31.5	33	63	7825 POTTER PLACE	I - 8	54.5	FH Sta. 3+81.03 60.0
20	20	7889 BLUE STREAM DRIVE	SMH - 117	54.5	SMH - 117	58.0	34	64	7827 POTTER PLACE	I - 8	54.5	FH Sta. 3+81.03 60.0
21	21	7891 BLUE STREAM DRIVE	SMH - 117	54.5	SMH - 117	58.0	35	65	7829 POTTER PLACE	I - 6	69.0	FH Sta. 3+81.03 60.0
22	22	7893 BLUE STREAM DRIVE	SMH - 117	54.5	SMH - 117	58.0	36	66	7831 POTTER PLACE	I - 5	69.0	FH Sta. 3+81.03 60.0
PARCEL A 918A	7918-A POTTER PLACE	SMH - 503	46.0	FH Sta. 3+81.03	83.0	37	67	7833 POTTER PLACE	I - 5	28.0	I - 6 36.0	
PARCEL A 918B	7918-B POTTER PLACE	SMH - 503	46.0	FH Sta. 3+81.03	83.0	38	68	7835 POTTER PLACE	I - 5	28.0	I - 6 36.0	
PARCEL A 918C	7918-C POTTER PLACE	SMH - 503	66.5	FH Sta. 3+81.03	65.0	39	69	7839 POTTER PLACE	I - 5	28.0	I - 6 50.0	
PARCEL A 920A	7920-A POTTER PLACE	SMH - 503	90.0	FH Sta. 3+81.03	49.0	41	71	7843 POTTER PLACE	I - 5	61.0	FH Sta. 6+79.53 90.0	
PARCEL A 920B	7920-B POTTER PLACE	SMH - 503	90.0	FH Sta. 3+81.03	49.0	42	72	7845 POTTER PLACE	I - 5	61.0	FH Sta. 6+79.53 90.0	
PARCEL A 922A	7922-A POTTER PLACE	I - 8	10.0	FH Sta. 3+81.03	40.5	43	73	7847 POTTER PLACE	I - 5	95.0	FH Sta. 6+79.53 51.0	
PARCEL A 922B	7922-B POTTER PLACE	I - 8	10.0	FH Sta. 3+81.03	40.5	44	74	7849 POTTER PLACE	I - 5	95.0	FH Sta. 6+79.53 51.0	
23	31	7928 POTTER PLACE	I - 8	61.0	FH Sta. 3+81.03	63.0	45	75	7853 POTTER PLACE	I - 10	19.0	FH Sta. 6+79.53 10.0
24	32	7928 POTTER PLACE	I - 8	61.0	FH Sta. 3+81.03	63.0	46	76	7855 POTTER PLACE	I - 10	39.0	FH Sta. 6+79.53 10.0
25	33	7932 POTTER PLACE	I - 8	100.0	I - 6	34.0	47	77	7857 POTTER PLACE	SMH - 505	60.0	FH Sta. 6+79.53 40.0
28	34	7932 POTTER PLACE	I - 8	100.0	I - 6	34.0	48	78	7959 POTTER PLACE	SMH - 505	60.0	FH Sta. 6+79.53 40.0
PARCEL B 940A	7840-A POTTER PLACE	SMH - 504	16.0	I - 6	25.0	49	79	7861 POTTER PLACE	SMH - 505	35.0	FH Sta. 6+79.53 70.0	
PARCEL B 940B	7840-B POTTER PLACE	SMH - 504	16.0	I - 6	25.0	50	80	7863 POTTER PLACE	SMH - 505	35.0	FH Sta. 6+79.53 70.0	
PARCEL B 942A	7842-A POTTER PLACE	SMH - 504	27.0	I - 6	52.0	51	81	7865 POTTER PLACE	SMH - 505	30.0	I - 12 34.0	
PARCEL B 942B	7842-B POTTER PLACE	SMH - 504	27.0	I - 6	52.0	CS LOT 151	Clubhouse	8001 BLUE STREAM DRIVE	SMH - 505	30.0	I - 12 34.0	
PARCEL B 944A	7844-A POTTER PLACE	SMH - 504	49.0	I - 6	78.0							
PARCEL B 944B	7844-B POTTER PLACE	SMH - 504	49.0	I - 6	78.0							
PARCEL B 946A	7846-A POTTER PLACE	SMH - 504	73.0	I - 6	99.0							
PARCEL B 946B	7846-B POTTER PLACE	SMH - 504	73.0	I - 6	99.0							
PARCEL B 948A	7848-A POTTER PLACE	SMH - 504	96.0	I - 10	84.0							
PARCEL B 948B	7848-B POTTER PLACE	SMH - 504	96.0	I - 10	84.0							



WATER MAIN LOCATION CHART	
WATER MAIN 'A'	
WL STA.	APPURTENANCE
WL STA: 0+00.00	CONNECT TO EX. 12" WATER, 1 1/2" TAPPING SLEEVE
WL STA: 0+54.00	8" VALVE
WL STA: 0+79.52	1.43" COUPLING DOWN
WL STA: 1+22.70	8" FHT & 6" VALVE
WL STA: 2+26.10	1.43" COUPLING UP
WL STA: 2+53.33	1/8 H. BEND, ROTATE 1.38" UP
WL STA: 2+67.47	1/8 H. BEND
WL STA: 3+78.03	8" VALVE
WL STA: 3+82.03	8" FHT & 6" VALVE
WL STA: 3+89.53	8" FHT & 6" VALVE
WL STA: 4+42.25	0.43" COUPLING DOWN
WL STA: 4+54.84	8" FHT & 6" VALVE
WL STA: 6+75.53	8" VALVE
WL STA: 6+79.53	8" FHT & 6" VALVE
WL STA: 6+79.53	8" FHT & 6" VALVE
WL STA: 6+79.53	8" FHT & 6" VALVE
WL STA: 8+38.74	8" FHT & 6" VALVE
WL STA: 8+47.87	1/16 H. BEND, 3.19" ROTATE DOWN
WL STA: 8+81.40	1/16 H. BEND, 0.35" ROTATE UP
WL STA: 8+81.12	8" VALVE
WL STA: 8+85.12	8" FHT & 6" VALVE
WL STA: 8+84.00	8" CAP & BUTTRISS
WATER MAIN 'B'	
WL STA.	APPURTENANCE
WL STA: 0+00.00	CONNECT TO PROP. 8" WATER MAIN 'A', 8" VALVE
WL STA: 0+04.00	8" VALVE
WL STA: 0+20.00	2.32" COUPLING UP
WL STA: 0+51.41	1/32 H. BEND
WL STA: 0+88.30	8" FHT & 6" VALVE
WL STA: 0+82.82	8" FHT & 6" VALVE
WL STA: 1+37.67	2.16" COUPLING DOWN
WL STA: 1+52.71	8" FHT & 6" VALVE
WL STA: 2+38.02	1/32 H. BEND
WL STA: 2+44.03	8" VALVE
WL STA: 2+48.02	CONNECT TO EX. 12" WATER, 1 1/2" TAPPING SLEEVE

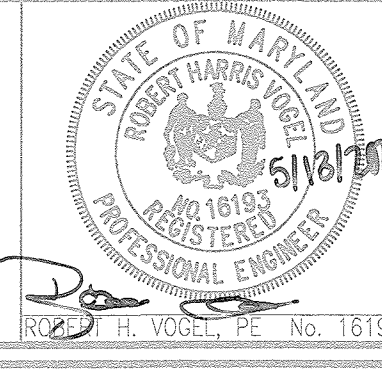
*CONTRACTOR TO TESTPIT EXISTING WATER TO VERIFY INVERT ELEVATION AT TIE-IN

*CONTRACTOR TO TESTPIT EXISTING WATER TO VERIFY INVERT ELEVATION AT TIE-IN

DEPARTMENT OF PUBLIC WORKS
HOWARD COUNTY, MARYLAND
CHIEF, BUREAU OF UTILITIES
DATE: 6-17-2020

DEPARTMENT OF PLANNING & ZONING
HOWARD COUNTY, MARYLAND
CHIEF, DEVELOPMENT ENGINEERING DIVISION
DATE: 6-29-20

VOGEL ENGINEERING
TIMMONS GROUP
3300 NORTH RIDGE ROAD, SUITE 110, ELLICOTT CITY, MD 21043
P: 410.461.7966 F: 410.461.8961 www.timmons.com



PROFESSIONAL CERTIFICATE
I HEREBY CERTIFY THAT THESE DOCUMENTS WERE PREPARED OR APPROVED BY ME, AND THAT I AM A duly Licensed Professional Engineer under the laws of the State of Maryland License No. 16193 EXPIRATION DATE 08-27-2020
DRN: KG DES: DZE
CHK: RHV
DATE: MAY 2020

BY	NO.	REVISION	DATE
RHV	1	REVISE TO DELACOUR-PHASE 1 AND REDUCE UNITS FROM 127 TO 66.	05/05/20

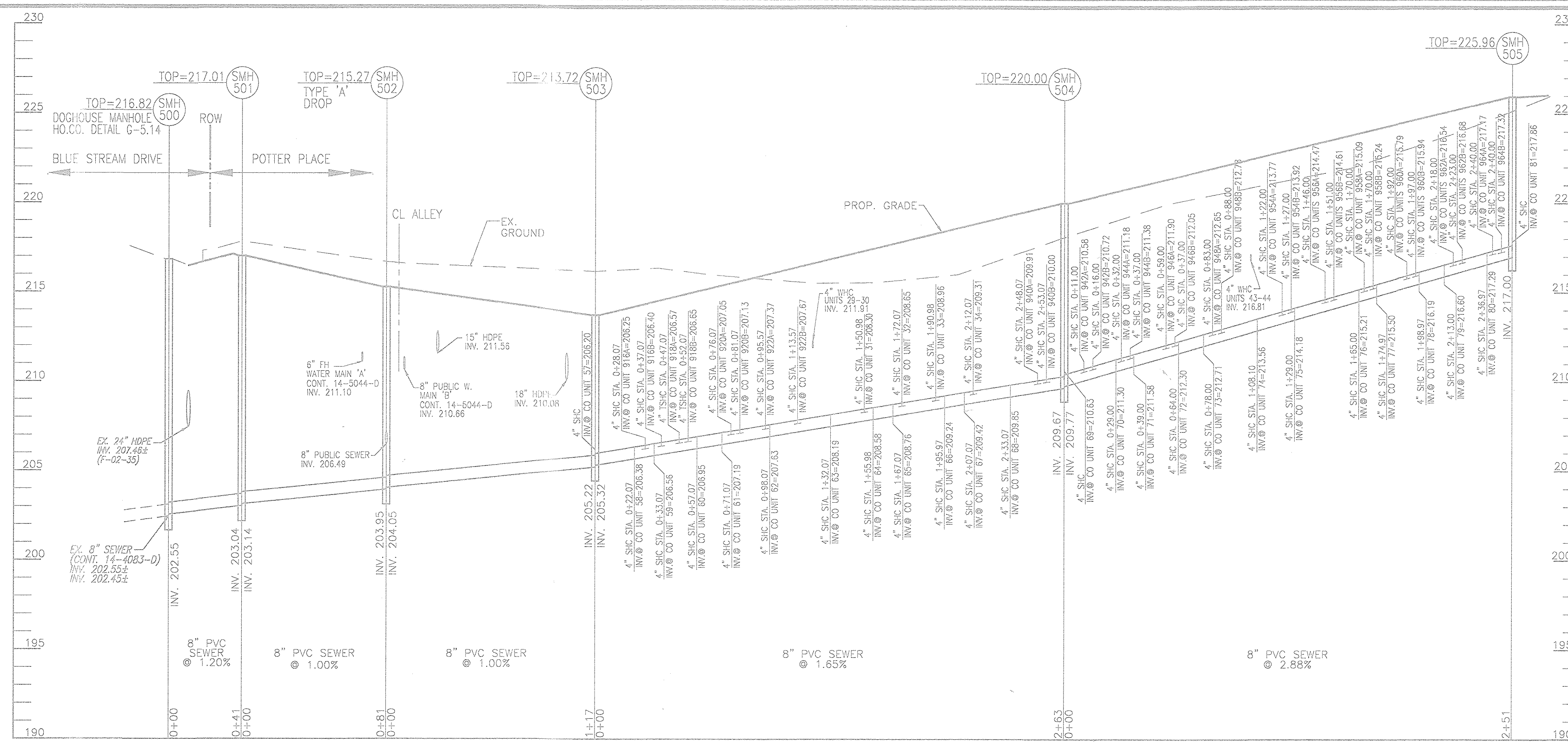
FINAL WATER AND SEWER CONSTRUCTION PLAN
CONTRACT 14-5044-D
WATER MAIN PROFILES

DELACOUR AT BLUE STREAM-PHASE 1
LOTS 1-51, OPEN SPACE LOT 151, AND PARCELS A-C
A RE-SUBDIVISION OF BUILDABLE BULK PARCEL L-4
TOWNHOMES - SECTION 3
ZONED: CAC-CL1

SCALE AS SHOWN
SHEET 3 OF 4

OWNER/DEVELOPER
BLUE STREAM 3 LLC
PO BOX 416
ELLICOTT CITY, MD 21041
C/O: ARNOLD SAGNER
410-465-2020

TAX MAP 43 GRID 4
1ST ELECTION DISTRICT
PARCEL 14
BLOCK NO. 4



SEWER HOUSE CONNECTION INVERT AND MCE TABULATION												SEWER HOUSE CONNECTION INVERT AND MCE TABULATION											
DROP THRU SLAB = 2.5												DROP THRU SLAB = 2.5											
LOT/ PARCEL	UNITS#	TYPE	INV SHC @/OVE R MAIN	DIST TO ESMT/ ROW	SHC SLOPE TO CO	EL @ ESMT/ CO	DIST FROM CO TO REAR OF HSE	SHC SLOPE TO REAR HSE	INV @ REAR HSE	MCE	LOT/ PARCEL	UNITS#	TYPE	INV SHC @/OVE R MAIN	DIST TO ESMT/ ROW	SHC SLOPE TO CO	EL @ ESMT/ CO	DIST FROM CO TO REAR OF HSE	SHC SLOPE TO REAR HSE	INV @ REAR HSE	MCE		
1	1	DSHC	211.50	.33	2.0%	212.16	59	2.0%	213.32	215.62	PARCEL C	954A	SHC	213.45	16	2.0%	213.77	71	2.0%	215.19	217.84		
2	2	DSHC	211.50	.33	2.0%	212.16	60	2.0%	213.36	215.68	PARCEL C	954B	SHC	213.60	16	2.0%	213.92	71	2.0%	215.34	218.00		
3	3	DSHC	212.25	.33	2.0%	212.91	58	2.0%	214.07	216.57	PARCEL C	955A	SHC	214.15	16	2.0%	214.47	69	2.0%	215.85	218.48		
4	4	DSHC	212.30	.33	2.0%	212.96	60	2.0%	214.18	216.68	PARCEL C	955B	SHC	214.29	16	2.0%	214.61	69	2.0%	215.99	219.16		
5	5	DSHC	213.00	.49	2.0%	213.74	52	2.0%	214.76	217.28	PARCEL C	956A	SHC	214.77	16	2.0%	215.09	71	2.0%	216.51	219.82		
6	6	DSHC	213.00	.49	2.0%	213.74	53	2.0%	214.76	217.28	PARCEL C	956B	SHC	214.92	16	2.0%	215.24	71	2.0%	216.66	219.82		
7	7	DSHC	213.60	.41	2.0%	214.42	45	2.0%	215.32	217.62	PARCEL C	950A	SHC	215.47	16	2.0%	215.79	69	2.0%	217.17	218.82		
8	8	DSHC	213.60	.41	2.0%	214.42	47	2.0%	215.36	217.86	PARCEL C	950B	SHC	215.62	16	2.0%	215.94	69	2.0%	217.32	219.00		
9	9	DSHC	214.30	.41	2.0%	215.12	45	2.0%	216.02	218.52	PARCEL C	952A	SHC	216.22	16	2.0%	216.54	71	2.0%	217.96	220.60		
10	10	DSHC	214.30	.41	2.0%	215.12	47	2.0%	216.06	218.58	PARCEL C	952B	SHC	216.36	16	2.0%	216.68	71	2.0%	218.10	221.20		
11	11	DSHC	215.35	.33	2.0%	216.01	53	2.0%	217.07	219.57	PARCEL C	954A	SHC	216.85	16	2.0%	217.17	69	2.0%	218.55	221.20		
12	12	DSHC	216.00	.33	2.0%	216.66	55	2.0%	217.76	220.26	PARCEL C	954B	SHC	217.00	16	2.0%	217.32	69	2.0%	218.70	221.20		
13	13	DSHC	216.70	.33	2.0%	217.36	53	2.0%	218.42	220.92	27	57	SHC	205.66	27	2.0%	205.20	56	2.0%	207.32	209.82		
14	14	DSHC	217.20	.33	2.0%	217.86	55	2.0%	218.96	221.46	28	58	SHC	205.86	26	2.0%	205.38	56	2.0%	207.54	210.04		
15	15	DSHC	217.90	.33	2.0%	218.56	53	2.0%	219.62	222.12	29	59	SHC	206.04	26	2.0%	205.56	56	2.0%	207.68	210.18		
16	16	DSHC	218.30	.33	2.0%	218.96	55	2.0%	220.08	222.58	30	60	SHC	206.43	26	2.0%	205.95	56	2.0%	208.11	210.61		
17	17	DSHC	219.20	.33	2.0%	219.86	63	2.0%	220.92	223.42	31	61	SHC	206.87	26	2.0%	206.39	56	2.0%	208.31	210.81		
18	18	DSHC	219.80	.33	2.0%	220.46	63	2.0%	221.56	224.06	32	62	SHC	207.11	26	2.0%	206.63	56	2.0%	208.79	211.29		
19	19	DSHC	220.60	.33	2.0%	221.26	57	2.0%	222.40	224.50	33	63	SHC	207.67	26	2.0%	207.19	56	2.0%	208.31	211.81		
20	20	DSHC	220.90	.33	2.0%	221.56	58	2.0%	222.66	225.16	34	64	SHC	208.06	26	2.0%	207.58	56	2.0%	208.74	212.24		
21	21	DSHC	221.80	.33	2.0%	222.46	57	2.0%	223.60	226.10	35	65	SHC	208.24	26	2.0%	207.76	56	2.0%	208.86	212.38		
22	22	DSHC	221.90	.33	2.0%	222.56	55	2.0%	223.66	226.16	36	66	SHC	208.72	26	2.0%	208.24	56	2.0%	210.40	212.50		
PARCEL A 916A	SHC	208.59	15	2.0%	208.25	63	2.0%	207.46	210.87	37	67	SHC	208.90	26	2.0%	208.42	56	2.0%	210.31	213.04			
PARCEL A 916B	SHC	208.10	15	2.0%	207.76	62	2.0%	207.64	210.14	38	68	SHC	209.38	26	2.0%	208.90	56	2.0%	211.01	213.51			
PARCEL A 918A	SHC	206.27	15	2.0%	205.97	60	2.0%	207.77	211.37	39	69	SHC	210.11	26	2.0%	210.63	56	2.0%	211.79	214.25			
PARCEL A 918B	SHC	205.35	15	2.0%	205.05	60	2.0%	207.85	210.35	40	70	SHC	210.78	26	2.0%	211.30	58	2.0%	212.46	214.86			
PARCEL A 920A	SHC	208.75	15	2.0%	207.05	62	2.0%	208.29	210.87	41	71	SHC	211.05	26	2.0%	211.58	56	2.0%	212.70	215.20			
PARCEL A 920B	SHC	205.83	15	2.0%	207.13	62	2.0%	208.37	211.37	42	72	SHC	211.78	26	2.0%	212.30	58	2.0%	213.48	215.96			
PARCEL A 922A	SHC	207.07	15	2.0%	207.37	60	2.0%	208.57	211.37	43	73	SHC	212.92	26	2.0%	213.44	58	2.0%	214.63	216.83			
PARCEL A 922B	SHC	207.37	15	2.0%	207.67	60	2.0%	208.87	211.37	44	74	SHC	213.04	26	2.0%	213.58	58	2.0%	214.72	217.22			
23	31	SHC	207.98	16	2.0%	208.30	52	2.0%	209.34	211.84	45	75	SHC	213.86	26	2.0%	214.18	56	2.0%	215.30	217.80		
24	32	SHC	208.33	16	2.0%	208.65	50	2.0%	209.65	212.15	46	76	SHC	214.89	26	2.0%	215.21	58	2.0%	216.37	218.67		
25	33	SHC	208.64	16	2.0%	208.96	52	2.0%	210.00	212.50	47	77	SHC	214.98	26	2.0%	215.50	56	2.0%	216.62	219.12		
26	34	SHC	208.99	16	2.0%	209.31	50	2.0%	210.31	212.81	48	78	SHC	215.67	26	2.0%	216.19	58	2.0%	217.38	219.85		
PARCEL B 940A	SHC	209.50	18	2.0%	209.81	63	2.0%	211.17	214.49	49	79	SHC	216.80	26	2.0%	217.32	58	2.0%	218.42	220.22			
PARCEL B 940B	SHC	209.68	18	2.0%	210.00	63	2.0%	211.26	213.76	50	80	SHC	216.77	26	2.0%	217.29	58	2.0%	218.45	220.56			
PARCEL B 942A	SHC	210.26	18	2.0%	210.58	65	2.0%	211.88	214.52	51	81	SHC	217.34	26	2.0%	217.86	56	2.0%	218.98	221.48			
PARCEL B 942B	SHC	210.40	18	2.0%	210.72	65	2.0%	212.02	214.52														
PARCEL B 944A	SHC	210.85	18	2.0%	211.18	63	2.0%	212.44	215.09														
PARCEL B 944B	SHC	211.01	18	2.0%	211.33	63	2.0%	212.59															
PARCEL B 946A	SHC	211.58	18	2.0%	211.90	65	2.0%	213.20															
PARCEL B 946B	SHC	211.73	18	2.0%	212.05	65	2.0%	213.35															
PARCEL B 948A	SHC	212.33	18	2.0%	212.65	63	2.0%	213.81															
PARCEL B 948B	SHC	212.46	18	2.0%	212.78	63	2.0%	214.04															

NOTE: UNITS DO NOT HAVE BASEMENTS

SEWER HOUSE CONNECTION AS-BUILT TABLE

LOT/PARCEL	UNIT	STREET ADDRESS	LOCATION DIMENSION 1	LOCATION DIMENSION 2	LOT/PARCEL	UNIT	STREET ADDRESS	LOCATION DIMENSION 1	LOCATION DIMENSION 2			
1	1	7945 BLUE STREAM DRIVE	SMH - 900	43.5 SMH - 112	87.5	PARCEL C	954A	7954-A POTTER PLACE	I - 10	J2.0 FH 6+79.53	48.0	
2	2	7947 BLUE STREAM DRIVE	SMH - 900	67.0 SMH - 112	64.0	PARCEL C	954B	7954-B POTTER PLACE	I - 10	J7.0 FH 6+79.53	50.0	
3	3	7949 BLUE STREAM DRIVE	SMH - 900	86.0 SMH - 112	45.0	PARCEL C	955A	7955-A POTTER PLACE	I - 10	45.0 FH 6+79.53	44.0	
4	4	7951 BLUE STREAM DRIVE	SMH - 900	75.0 SMH - 112	42.0	PARCEL C	955B	7955-B POTTER PLACE	I - 10	45.0 FH 6+79.53	44.0	
5	5	7953 BLUE STREAM DRIVE	SMH - 112	56.5 SMH - 113	40.0	PARCEL C	958A	7958-A POTTER PLACE	SMH - 505	35.0 FH 6+79.53	48.0	
6	6	7957 BLUE STREAM DRIVE	SMH - 112	75.0 SMH - 113	41.0	PARCEL C	958B	7958-B POTTER PLACE	SMH - 505	35.0 FH 6+79.53	48.0	
7	7	7959 BLUE STREAM DRIVE	SMH - 113	48.5 SMH - 114	79.0	PARCEL C	950A	7950-A POTTER PLACE	SMH - 505	61.0 FH 6+79.53	62.0	
8	8	7961 BLUE STREAM DRIVE	SMH - 113	53.0 SMH - 114	76.0	PARCEL C	950B	7950-B POTTER PLACE	SMH - 505	58.0 FH 6+79.53	64.0	
9	9	7963 BLUE STREAM DRIVE	SMH - 113	78.0 SMH - 114	51.5	PARCEL C	952A	7952-A POTTER PLACE	SMH - 505	36.0 FH 6+79.53	62.0	
10	10	7965 BLUE STREAM DRIVE	SMH - 113	86.0 SMH - 114	46.5	PARCEL C	952B	7952-B POTTER PLACE	SMH - 505	33.0 FH 6+79.53	64.0	
11	11	7969 BLUE STREAM DRIVE	SMH - 114	61.0 SMH - 115	67.0	PARCEL C	954A	7954-A POTTER PLACE	SMH - 505	19.0	I - 12	21.0
12	12	7971 BLUE STREAM DRIVE	SMH - 114	68.0 SMH - 115	75.0	PARCEL C	954B	7954-B POTTER PLACE	SMH - 505	16.0	I - 12	18.0
13	13	7973 BLUE STREAM DRIVE	FH 51a. 21+67	22.0 SMH - 116	56.0	27	57	7911 POTTER PLACE	SMH - 503	26.5	I - 3	49.5
14	14	7975 BLUE STREAM DRIVE	FH 51a. 21+67	22.0 SMH - 116	55.0	28	58	7913 POTTER PLACE	SMH - 503	35.0	FH 3+82.03	92.0
15	15	7977 BLUE STREAM DRIVE	FH 51a. 21+67	49.0 SMH - 116	37.0	29	59	7915 POTTER PLACE	SMH - 503	44.0	FH 3+82.03	81.0
16	16	7979 BLUE STREAM DRIVE	FH 51a. 21+67	58.0 SMH - 116	31.0	30	60	7917 POTTER PLACE	SMH - 503	64.0	FH 3+82.03	56.5
17	17	7981 BLUE STREAM DRIVE	FH 51a. 21+67	91.0 SMH - 116	40.0	31	61	7919 POTTER PLACE	SMH - 503	77.5	FH 3+82.03	42.0
18	18	7985 BLUE STREAM DRIVE	SMH - 116	53.5 SMH - 1	95.0	32	62	7921 POTTER PLACE	SMH - 503	102.0	FH 3+82.03	15.0
19	19	7987 BLUE STREAM DRIVE	SMH - 116	82.0 SMH - 1	34.5	33	63	7925 POTTER PLACE	I - 8	49.5	FH 3+82.03	19.0
20	20	7989 BLUE STREAM DRIVE	SMH - 1	41.0 SMH - 117	78.0	34	64	7927 POTTER PLACE	I - 8	66.5	FH 3+82.03	42.5
21	21	7991 BLUE STREAM DRIVE	SMH - 1	64.0 SMH - 117	49.0	35	65	7929 POTTER PLACE	I - 8	78.0	FH 3+82.03	59.0
22	22	7993 BLUE STREAM DRIVE	SMH - 1	73.5 SMH - 117	42.0	36	66	7931 POTTER PLACE	I - 5	54.0	FH 3+82.03	83.0
PARCEL A 916A	SHC	7916-A POTTER PLACE	SMH - 503	34.0 FH 3+82.03	74.5	37	67	7933 POTTER PLACE	I - 5	42.0	FH 3+82.03	94.0
PARCEL A 916B	SHC	7916-B POTTER PLACE	SMH - 503	42.5 FH 3+82.03	85.0	38	68	7935 POTTER PLACE	I - 5	18.0	I - 6	39.0
PARCEL A 918A	SHC	7918-A POTTER PLACE										

5782 MAIN ST. - ECKRIDGE (HO-498)
CORNICHE
KRS MAY 2015

