

GENERAL NOTES

PART I

- APPROXIMATE LOCATIONS OF EXISTING MAINS ARE SHOWN. THE CONTRACTOR SHALL TAKE ALL NECESSARY PRECAUTIONS TO PROTECT EXISTING MAINS AND SERVICES AND MAINTAIN UNINTERRUPTED SERVICE. ANY DAMAGE INCURRED SHALL BE REPAIRED IMMEDIATELY TO THE SATISFACTION OF THE ENGINEER AT THE CONTRACTOR'S EXPENSE.
- TOPOGRAPHIC FIELD SURVEYS WERE PERFORMED JUNE 2017, AND SUPPLEMENTED WITH HOWARD COUNTY GIS FOR DATE 05/15/18 BY ROBERT H. VOGEL ENGINEERING, INC.
- HORIZONTAL AND VERTICAL SURVEY CONTROLS:
THE COORDINATES SHOWN ON THE DRAWINGS ARE BASED ON MARYLAND STATE REFERENCE SYSTEM NAD '83/91 AS PROJECTED BY HOWARD COUNTY GEODETIC CONTROL STATIONS 47GD AND 47GE. ALL VERTICAL CONTROLS ARE BASED ON NAVD '88. VERTICAL CONTROLS PROVIDED ON DRAWINGS ARE:
GEODETIC SURVEY CONTROL 47GD (N 530494.49/E 1350872.35)
BRASS DISC SET ON TOP OF A CONCRETE MONUMENT.
GEODETIC SURVEY CONTROL 47GE (N 529044.94/E 1350855.03)
BRASS DISC SET ON TOP OF A CONCRETE MONUMENT.
- ALL PIPE ELEVATIONS SHOWN ARE INVERT ELEVATIONS UNLESS OTHERWISE NOTED ON THE PLANS.
- CLEAR ALL UTILITIES BY A MINIMUM OF 12 INCHES. CLEAR ALL POLES BY 5'-0" MINIMUM OR TUNNEL AS REQUIRED UNLESS OTHERWISE NOTED. THE OWNER HAS CONTACTED THE UTILITY COMPANIES AND HAS MADE ARRANGEMENTS FOR BRACING OF POLES AS SHOWN ON THE DRAWINGS. IN THE EVENT THE CONTRACTOR'S WORK REQUIRES THE BRACING OF ADDITIONAL POLES, ANY COST INCURRED BY THE OWNER FOR BRACING OF ADDITIONAL POLES OR DAMAGES SHALL BE DEDUCTED FROM MONIES OWED THE CONTRACTOR. THE CONTRACTOR SHALL COORDINATE WITH THE UTILITY COMPANIES TO SCHEDULE THE BRACING OF THE POLES.
- FOR DETAILS NOT SHOWN ON THE DRAWING, AND FOR MATERIALS AND CONSTRUCTION METHODS, USE HOWARD COUNTY DESIGN MANUAL VOLUME IV, STANDARD SPECIFICATIONS AND DETAILS FOR CONSTRUCTION (LATEST EDITION). THE CONTRACTOR SHALL HAVE A COPY OF VOLUME IV ON THE JOB.
- WHERE TEST PITS HAVE BEEN MADE ON EXISTING UTILITIES, THEY ARE NOTED BY THE SYMBOL AT THE LOCATIONS OF THE TEST PITS. A NOTE OR NOTES CONTAINING THE RESULTS OF THE TEST PIT OR PITS IS INCLUDED ON THE DRAWINGS. EXISTING UTILITIES IN THE VICINITY OF THE PROPOSED WORK FOR WHICH TEST PITS HAVE NOT BEEN DUG SHALL BE LOCATED BY THE CONTRACTOR TWO WEEKS IN ADVANCE OF CONSTRUCTION OPERATIONS AT HIS OWN EXPENSE.
- THE CONTRACTOR SHALL NOTIFY THE FOLLOWING UTILITY COMPANIES OR AGENCIES AT LEAST FIVE WORKING DAYS BEFORE STARTING WORK SHOWN THESE PLANS:
AT&T 1-800-252-1133
BGE (CONSTRUCTION SERVICES) 410-631-8713
BGE (EMERGENCY) 410-685-0123
BUREAU OF UTILITIES 410-313-4900
COLONIAL PIPELINE CO 410-795-1390
MISS UTILITY 1-800-267-7777
STATE HIGHWAY ADMINISTRATION 410-531-5533
VERIZON 1-800-743-0033
- TREES AND SHRUBS ARE TO BE PROTECTED FROM DAMAGE TO THE MAXIMUM EXTENT. TREES AND SHRUBS LOCATED WITHIN THE CONSTRUCTION STRIP ARE NOT TO BE REMOVED OR DAMAGED BY THE CONTRACTOR.
- THE CONTRACTOR SHALL REMOVE TREES, STUMPS AND ROOTS ALONG THE LINE OF EXCAVATION. PAYMENT FOR SUCH REMOVAL SHALL BE INCLUDED IN THE UNIT PRICE BID FOR CONSTRUCTION OF THE MAIN.
- THE CONTRACTOR SHALL NOTIFY THE BUREAU OF HIGHWAYS, HOWARD COUNTY, AT (410) 313-7450 AT LEAST FIVE WORKING DAYS BEFORE ANY OPEN CUTTING OR BORING/JACKING OF ANY COUNTY ROAD FOR LAYING WATER MAINS OR SEWER CONNECTIONS. THE APPROVAL OF THESE DRAWINGS WILL CONSTITUTE COMPLIANCE WITH DPW REQUIREMENTS PER SECTION 18.114(a) OF THE HOWARD COUNTY CODE.

PART II - WATER:

- ALL WATER MAINS SHALL BE C900 PVC-DR-18 UNLESS OTHERWISE NOTED.
- TOPS OF ALL WATER MAINS SHALL HAVE A MINIMUM OF 3'-6" OF COVER UNLESS OTHERWISE NOTED.
- VALVES ADJACENT TO TEES SHALL BE STRAPPED TO TEES.
- ALL FITTINGS SHALL BE BUTTRESSED OR ANCHORED WITH CONCRETE IN ACCORDANCE WITH STANDARD DETAILS UNLESS OTHERWISE PROVIDED FOR ON THE DRAWINGS.
- FIRE HYDRANTS SHALL BE SET TO THE BURY LINE ELEVATIONS SHOWN ON THE DRAWINGS. ALL FIRE HYDRANTS SHALL BE INSTALLED IN ACCORDANCE WITH STANDARD DETAILS. THE SOIL AROUND THE FIRE HYDRANT SHALL BE COMPACTED IN ACCORDANCE WITH SECTION 1000 AND SECTION 1005 OF THE STANDARD SPECIFICATIONS.
- THE CONTRACTOR SHALL NOT OPERATE ANY WATER MAIN VALVES ON THE EXISTING WATER SYSTEM. TRACER WIRE AND CONTINUITY TEST STATIONS SHALL BE INSTALLED ON ALL DIP AND PVC WATER MAINS IN ACCORDANCE WITH THE HOWARD COUNTY DESIGN MANUAL.
- FOR PVC WATER MAINS, ALL RECORDS FOR THE QUALITY CONTROL AND QUALIFICATION TEST REQUIREMENTS NOTED IN SECTION 5.1 OF THE AWWA STANDARD C900 FOR PVC PRESSURE PIPE SHALL BE SUBMITTED WITH THE PIPE MATERIAL CERTIFICATIONS OR SHOP DRAWINGS PRIOR TO APPROVAL OF THE MATERIAL FOR USE. THE TEST RECORDS SHALL BE FOR THE PIPE TO BE INSTALLED UNDER THIS CONTRACT. ALL PVC PIPE SHALL CONTAIN MARKINGS TO ALLOW CROSS REFERENCING OF THE PIPE SUPPLIED TO THE TEST RECORDS RECEIVED.
- UNLESS OTHERWISE NOTED ON THE PLANS OR IN THE SPECIFICATIONS, SACRIFICIAL ANODES SHALL BE INSTALLED ON ALL VALVES AND METALLIC FITTINGS USED WITH PVC WATER MAINS IN ACCORDANCE WITH VOLUME IV, STANDARD SPECIFICATIONS AND DETAILS FOR CONSTRUCTION. SEVENTEEN (17) POUND MAGNESIUM ANODES SHALL BE INSTALLED ON ALL VALVES AND DUCTILE IRON FITTINGS INCLUDING RESTRAINTS AND HARNESSSES. TWELVE (12) POUND ZINC ANODES SHALL BE INSTALLED ON ALL STAINLESS STEEL FITTINGS AND SADDLES USED WITH PVC MAINS. ALL "TEES" USED WITH PVC MAINS SHALL BE DUCTILE IRON.
- PROPER ASSEMBLY OF GASKETED PVC PIPE JOINTS: THE MANUFACTURER'S INSERTION LINE OF GASKETED PVC PIPE JOINTS INDICATES THE MAXIMUM DEPTH OF INSERTION OF THE SPIGOT INTO THE BELL. AFTER ASSEMBLY OF THE JOINT, THE INSERTION LINE SHALL REMAIN VISIBLE. DUAL INSERTION LINES ON GASKETED PVC PIPE JOINTS INDICATE THE MAXIMUM AND MINIMUM DEPTH OF INSERTION OF THE SPIGOT INTO THE BELL. THE CONTRACTOR SHALL NOT OVER INSERT OR OVER HOME THE SPIGOT INTO THE BELL OF PVC PIPE.
- ALL CHANGES IN HORIZONTAL OR VERTICAL DIRECTION OF PVC WATER PIPE SHALL BE MADE WITH STANDARD BENDS, 5-DEGREE SWEEPS OR HIGH DEFLECTION (HD) COUPLINGS. NO BENDING OF THE PIPE OR DEFLECTING OF PVC PIPE JOINTS IS PERMITTED, WHERE HIGH DEFLECTION COUPLINGS OR 5-DEGREE SWEEPS ARE PERMITTED, THE CONTRACTOR SHALL PROVIDE ONE FULL PIPE LENGTH (20-FOOT LONG) ON EITHER SIDE OF THE HIGH DEFLECTION COUPLING OR 5-DEGREE SWEEP. THE CONTRACTOR SHALL USE A VIBRATORY PLATE COMPACTOR OR OTHER APPROVED MEANS TO THOROUGHLY COMPACT THE #57 STONE ON BOTH SIDES OF THE HIGH DEFLECTION COUPLING OR 5-DEGREE SWEEP, TAKING CARE NOT TO USE COMPACTION EQUIPMENT DIRECTLY OVER THE FITTING. PVC HIGH DEFLECTION COUPLINGS SHALL BE LIMITED TO A TOTAL DEFLECTION OF 3-DEGREES (1-1/2 DEGREE ON EITHER END OF THE COUPLING). SHALL BE RATED FOR A MINIMUM 200 PSI MEETING THE REQUIREMENTS OF AWWA C900, SHALL HAVE A MINIMUM LAY LENGTH OF 9-INCHES AND SHALL HAVE CENTER STOPS. PVC HIGH DEFLECTION COUPLINGS SHALL BE CERTAINTED PVC HIGH DEFLECTION (HD) STOP COUPLINGS OR EQUAL. FIVE DEGREE SWEEPS SHALL BE BELL BY SPIGOT, RATED FOR A MINIMUM 225 PSI, DR18 MEETING THE REQUIREMENTS OF AWWA C900 AND SHALL BE MULTI FITTINGS (PEX) BLUE BRUTE DR18 OR EQUAL.
- WHEN PVC HIGH DEFLECTION COUPLINGS OR PVC 5-DEGREE SWEEPS ARE USED TO FACILITATE CHANGES IN HORIZONTAL OR VERTICAL ALIGNMENTS OF AWWA C-900 PVC PIPELINES, THE CONTRACTOR SHALL INSTALL DEVICES FOR THE PREVENTION OF OVER-INSERTION OF THE PVC PIPE SPIGOTS OR PLAIN ENDS INTO THE PUSH ON BELL JOINT ON BOTH SIDES OF THE HIGH DEFLECTION COUPLINGS AND 5 DEGREE SWEEPS. BELL STOPS SHALL BE PLACED AT THE PROPER INSERTION LINE FOR THE FITTING. BELL STOPS SHALL BE MANUFACTURED OF DUCTILE IRON AND INCORPORATE AN EXPANSION RETENTION SPRING TO ALLOW FOR PIPE EXPANSION AND CONTRACTION. THE BELL STOPS SHALL BE SERIES 5000 MEGA-STOP, AS MANUFACTURED BY EBAA IRON INC. OR APPROVED EQUAL.
- SPRINKLER SYSTEM FOR SINGLE RESIDENTIAL DWELLING UNITS SHALL HAVE WATER HOUSE CONNECTIONS AND WATER METERS THAT ARE SIZED IN ACCORDANCE WITH THE DESIGN OF THE SPRINKLER SYSTEMS. SPRINKLER SYSTEMS FOR SINGLE RESIDENTIAL DWELLINGS SHALL HAVE A MINIMUM OF 1.5" SERVICE CONNECTION WITH A 1" OUTSIDE METER SETTING.

SEDIMENT CONTROL MEASURES WILL BE IMPLEMENTED IN ACCORDANCE WITH SECTION 308 OF THE SPECIFICATIONS AND WITH SITE DEVELOPMENT PLAN F-18-059

THIS DEVELOPMENT IS APPROVED FOR SOIL EROSION AND SEDIMENT CONTROL BY THE HOWARD SOIL CONSERVATION DISTRICT.

John P. Robertson
SOIL CONSERVATION DISTRICT

9/26/18
DATE

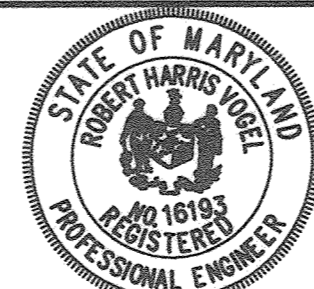
DEPARTMENT OF PUBLIC WORKS
HOWARD COUNTY, MARYLAND

DEPARTMENT OF PLANNING & ZONING
HOWARD COUNTY, MARYLAND

John P. Robertson
CHIEF, BUREAU OF UTILITIES
9/26/18
DATE

John P. Robertson
CHIEF, DEVELOPMENT ENGINEERING DIVISION
10.9.18
DATE

ROBERT H. VOGEL ENGINEERING, INC.
ENGINEERS - SURVEYORS - PLANNERS
3300 N. RIDGE ROAD, SUITE 110 TEL: 410.461.7666
ELLICOTT CITY, MD 21043 FAX: 410.461.8961



ROBERT H. VOGEL, PE No. 16193

PROFESSIONAL CERTIFICATE
I HEREBY CERTIFY THAT THESE DOCUMENTS WERE PREPARED OR APPROVED BY ME AND THAT I AM A DULY LICENSED PROFESSIONAL ENGINEER UNDER THE LAWS OF THE STATE OF MARYLAND.
EXPIRATION DATE: 08-27-2018

DES:	RHV	REVISION TO REMOVE A 6" VALVE FROM WATER MAIN	6-1-21
DRN:	KG	REVISION WATER MAIN TIE-IN (CONNECTION) TO AVOID CONFLICT WITH	7-9-19
CHK:	RHV	NEWLY IDENTIFIED/LOCATED DUCT BANK IN THE FIELD	
DATE:	AUGUST 2018	NO.	REVISION

600' SCALE MAP NO. 47

BLOCK NO. 19

FINAL WATER CONSTRUCTION PLAN
CONTRACT NO. 24-5032-D

MAGNOLIA MANOR WEST
LOTS 1 - 7 AND OPEN SPACE LOT 8
A SUBDIVISION OF TAX MAP 47 - PARCEL 558
AND A RESUBDIVISION OF
TAX MAP 47 - PARCEL 157 - GIDDINGS PROPERTY -
LOTS 1 AND 2 (PLAT 5708)

TAX MAP 47, PARCELS: 157 & 558
6TH ELECTION DISTRICT
GRID 19, ZONED: R-SC
HOWARD COUNTY, MARYLAND

SCALE AS SHOWN

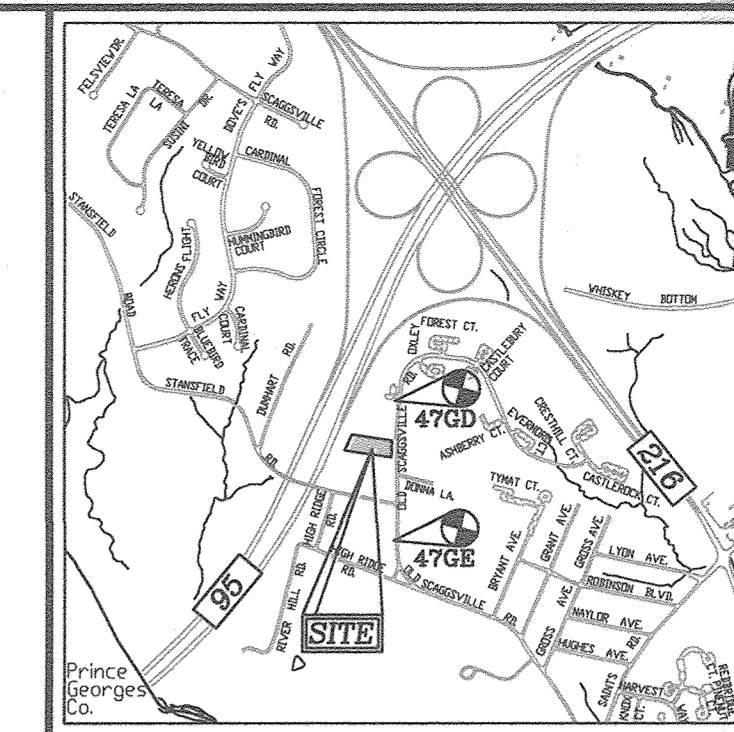
SHEET 1 OF 2

FINAL WATER CONSTRUCTION PLAN MAGNOLIA MANOR WEST

LOTS 1 - 7 AND OPEN SPACE LOT 8
A SUBDIVISION OF TAX MAP 47 - PARCEL 558
AND A RESUBDIVISION OF TAX MAP 47 - PARCEL 157
"GIDDINGS PROPERTY - LOTS 1 AND 2" (PLAT 5708)
CONTRACT# 24-5032-D
HOWARD COUNTY, MARYLAND

BENCHMARKS

HOWARD COUNTY BENCHMARK - 47GE
N 529044.94 E 1350855.03 ELEV.: 337.61
HOWARD COUNTY BENCHMARK - 47GD
N 530494.49 E 1350872.35 ELEV.: 312.28



VICINITY MAP
SCALE: 1"=2,000'
ADC MAP COORDINATE: 40- A6



LOCATION MAP
SCALE: 1"=600'

WATER ZONE:	550
TEST PRESSURE:	232
TEST GRADIENT:	827

TYPE OF BUILDING :	RESIDENTIAL
NO. OF UNITS :	7 SINGLE FAMILY DETACHED
NO. OF SINGLE WATER HOUSE CONNECTIONS :	7
NO. OF SINGLE SEWER HOUSE CONNECTIONS :	7
DRAINAGE AREA :	LITTLE PATUXENT RIVER
TREATMENT PLANT :	LITTLE PATUXENT WRP

LEGEND

- EXISTING TREELINE
- PROPOSED TREELINE
- EXISTING WATER MAIN
- PROPOSED WATER MAIN
- FIRE HYDRANT
- PROPOSED VALVE
- PROPOSED TEE
- PROPOSED STORM DRAIN
- EXISTING STORM DRAIN
- EXISTING SEWER
- PRIVATE WATER HOUSE CONNECTION
- PRIVATE SEWER HOUSE CONNECTION

QUANTITIES

NAME OF UTILITY CONTRACTOR : HIGHLAND TURF INC.				
SURVEY AND DRAFTING DIVISION AS-BUILT DATE : 3-18-21				
ITEMS	ESTIMATED	AS-BUILT		
		QUANTITIES	TYPE	MANUFACTURER/SUPPLIER -BRS
WATER				
6" WATER (PVC C-900) (DR-18)	438 LF	438 LF	C-900DR-18	NATIONAL PIPE
6" WATER DIP (FH)	9 LF	9 LF	DIP CL-54	NYON PIPE
8" X 6" TAPPING SLEEVE & V.	1 EA	1 EA	S.S	JM INDUSTRIES
6" X 6" TEE	1 EA	1 EA	DIP	STAR PIPE
6" VALVE	1 EA	2 EA	DIP	MUELLER
FIRE HYDRANT & TEST STATION	1 EA	1 EA	4 1/2" DIP	MUELLER
6" - 1/16" HORIZ. BEND	2 EA	2 EA	DIP	STAR PIPE
6" - 1/32" HORIZ. BEND	1 EA	2 EA	DIP	STAR PIPE
6" - VERT. COUPLING	3 EA	3 EA	DIP	STAR PIPE
1 1/2" W/C	135 LF	130 LF	K COPPER	CAMBRIDGE LEE
6" CAP & BUTTRESS	1 EA	1 EA	DIP	STAR PIPE
6"-1/4" BEND MEGA-LOG	2 EA	4 EA	DIP	STAR PIPE
6"-1/8" BEND MEGA-LOG	2 EA	4 EA	DIP	STAR PIPE
SEWER				
4" SHC	80 LF	44'	4" DR-36	JM EAGLE

CAUTION SHOULD BE TAKEN AROUND OVERHEAD UTILITIES AT THE FRONTAGE OF THE PROPERTY ALONG OLD SCAGGSVILLE ROAD DURING EXCAVATION FOR THE CONSTRUCTION OF THIS WATER CONTRACT.

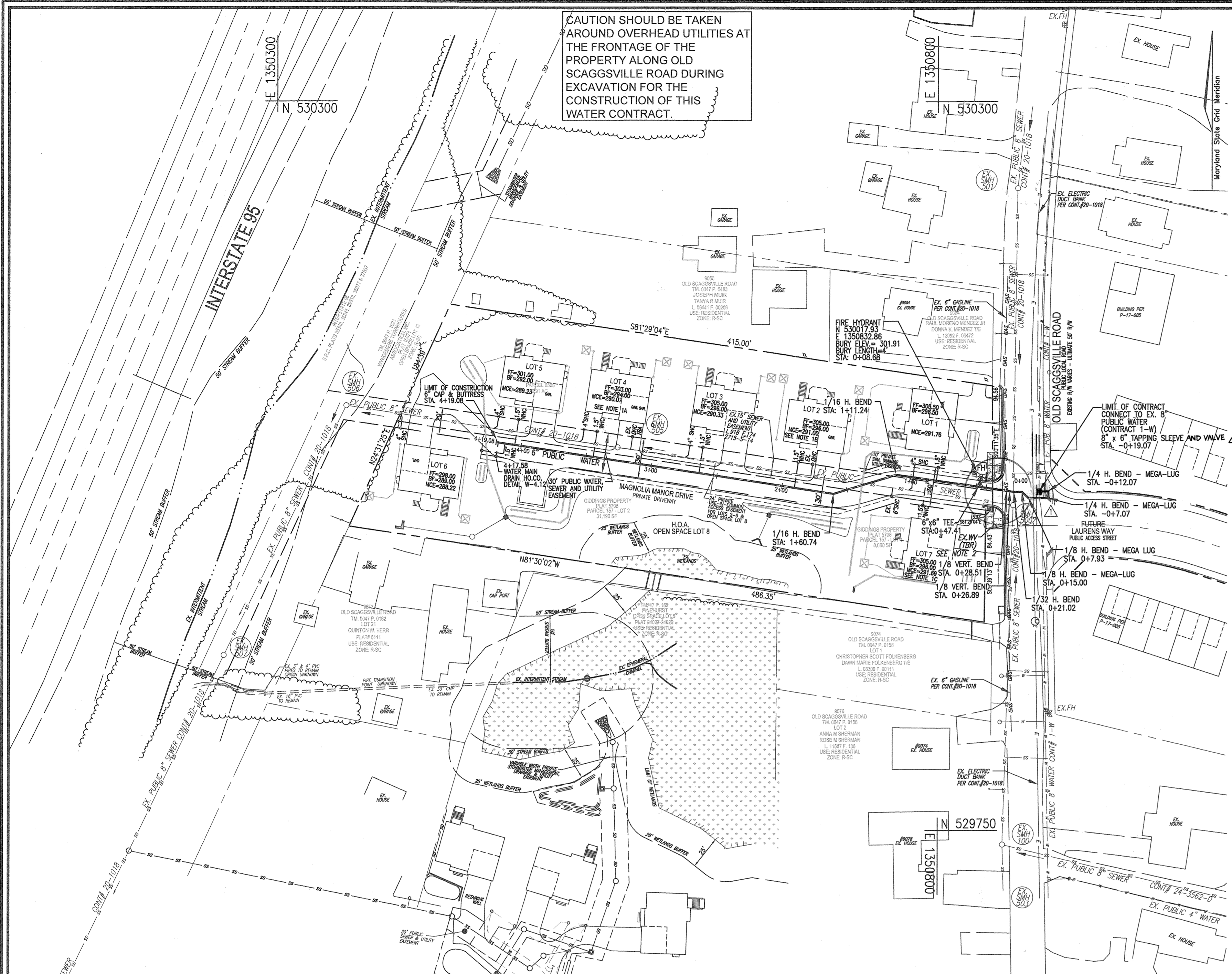
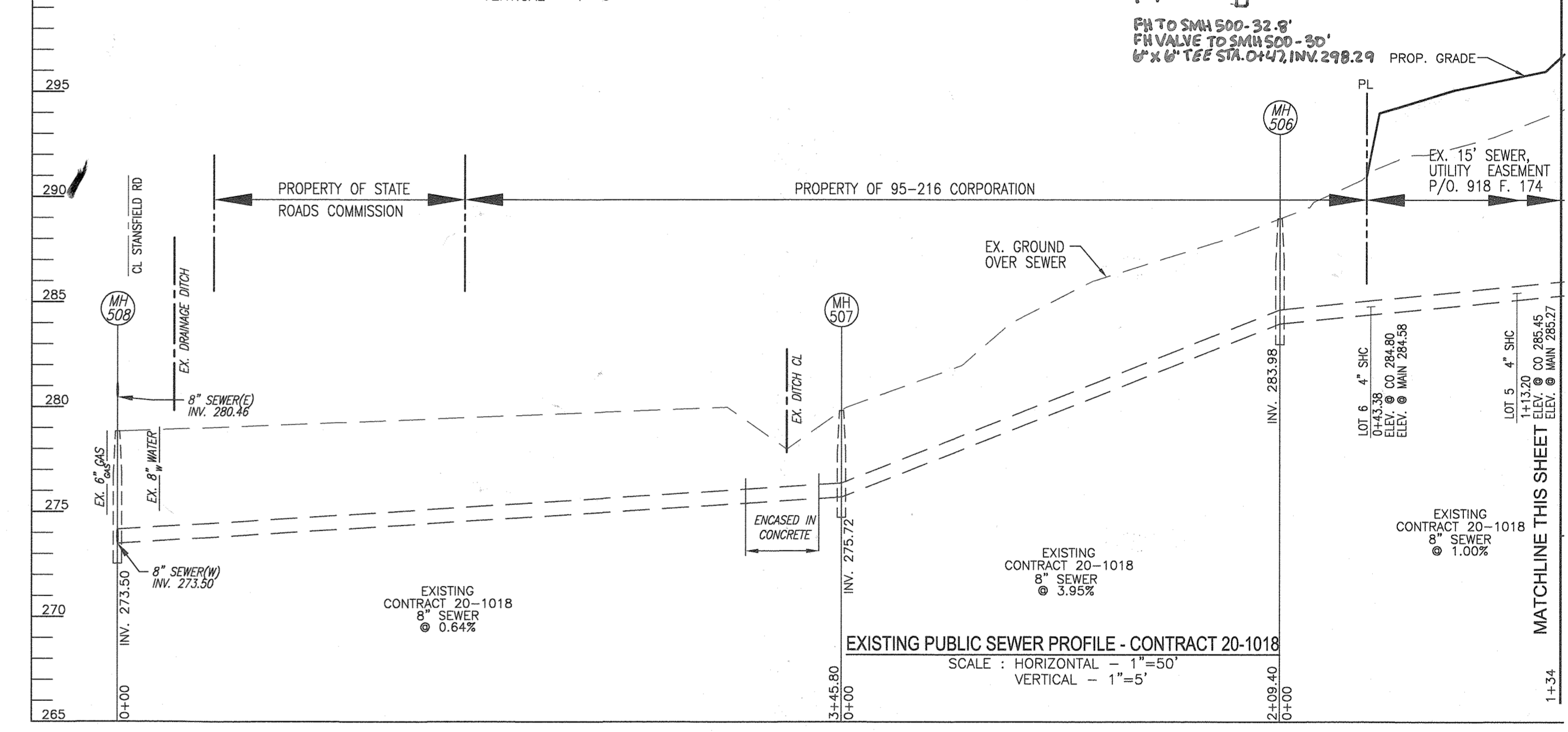
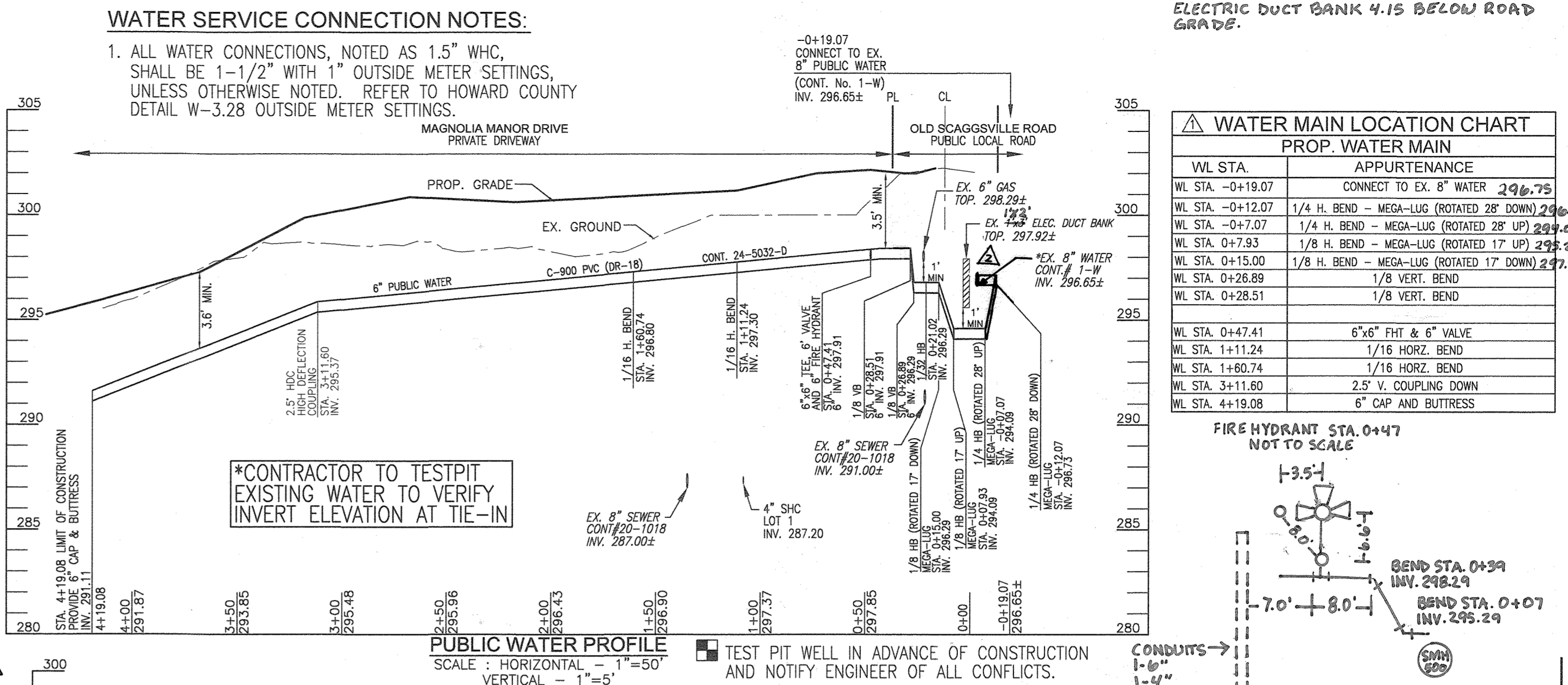
WATER SERVICE CONNECTION NOTES:

- ALL WATER CONNECTIONS, NOTED AS 1.5" W.H.C. SHALL BE 1-1/2" WITH 1" OUTSIDE METER SETTINGS, UNLESS OTHERWISE NOTED. REFER TO HOWARD COUNTY DETAIL W-3.28 OUTSIDE METER SETTINGS.

ELECTRIC DUCT BANK 4.15 BELOW ROAD GRADE.

WATER MAIN LOCATION CHART

WL STA.	APPURTENANCE
WL STA. -0+19.07	CONNECT TO EX. 8" WATER
WL STA. -0+12.07	1/4 H. BEND - MEGA-LUG (ROTATED 28° DOWN)
WL STA. -0+7.07	1/4 H. BEND - MEGA-LUG (ROTATED 28° UP)
WL STA. 0+7.93	1/8 H. BEND - MEGA-LUG (ROTATED 17° UP)
WL STA. 0+15.00	1/8 H. BEND - MEGA-LUG (ROTATED 17° DOWN)
WL STA. 0+26.89	1/8 VERT. BEND
WL STA. 0+28.51	1/8 VERT. BEND
WL STA. 0+47.41	6"x6" FHT & 6" VALVE
WL STA. 1+11.24	1/16 HORIZ. BEND
WL STA. 1+60.74	1/16 HORIZ. BEND
WL STA. 3+11.60	2.5' V. COUPLING DOWN
WL STA. 4+19.08	6" CAP AND BUTTRESS



WATER HOUSE CONNECTION AS-BUILT LOCATION TABLE

UNIT	STREET ADDRESS	LOCATION DIMENSION 1	LOCATION DIMENSION 2
UNIT 1	XXXX MAGNOLIA MANOR DRIVE	FH 33.1'	FAW 33.7'
UNIT 2	XXXX MAGNOLIA MANOR DRIVE	FAW 46.7'	LOT 3 SHC 17.5'
UNIT 3	XXXX MAGNOLIA MANOR DRIVE	LOT 3 SHC 10.5'	SMH 505 70.5'
UNIT 4	XXXX MAGNOLIA MANOR DRIVE	LOT 4 SHC 10.5'	SMH 505 21.9'
UNIT 5	XXXX MAGNOLIA MANOR DRIVE	LOT 5 SHC 27.5'	DRAIN VAULT 11.5'
UNIT 6	XXXX MAGNOLIA MANOR DRIVE	LOT 5 WHC 33.5'	DRAIN VAULT 11.5'
UNIT 7	XXXX MAGNOLIA MANOR DRIVE	FH 48.5'	SMH 500 46.8'

SEWER HOUSE CONNECTION AS-BUILT LOCATION TABLE

UNIT	STREET ADDRESS	LOCATION DIMENSION 1	LOCATION DIMENSION 2
UNIT 1	XXXX MAGNOLIA MANOR DRIVE	FH 40.1'	LOT 1 WHC 15.3'
UNIT 2	XXXX MAGNOLIA MANOR DRIVE	LOT 7 WHC 83.5'	LOT 1 SHC 18.5'
UNIT 3	XXXX MAGNOLIA MANOR DRIVE	SMH 505 49.5'	LOT 3 WHC 10.5'
UNIT 4	XXXX MAGNOLIA MANOR DRIVE	SMH 505 31.5'	LOT 5 WHC 49.0'
UNIT 5	XXXX MAGNOLIA MANOR DRIVE	SMH 505 30.5'	LOT 6 WHC 35.5'
UNIT 6	XXXX MAGNOLIA MANOR DRIVE	LOT 5 WHC 33.5'	LOT 6 WHC 87.4'
UNIT 7	XXXX MAGNOLIA MANOR DRIVE	FH 45.3'	LOT 7 WHC 19.5'

MINIMUM CELLAR ELEVATION (MCE)

LOT #	INV 4" SHC	TYPE	DIST TO ESMT/R/W	EL @ ESMT	DIST ESMT - HSE	SHC SLOPE	EL @ HOUSE	PROP BF ELEV	MCE
1	287.72	SHC	20	288.12	29	2.0%	288.26	296.50	291.76
2	287.72	EX DHC	9	287.40	57	2.0%	288.50	296.00	291.00
3	286.37	SHC	64	286.55	64	2.0%	287.83	296.00	290.33
4	286.11	SHC	9	286.29	64	2.0%	287.57	294.00	290.07
5	285.27	SHC	9	285.45	64	2.0%	286.73	292.00	289.23
6	284.58	SHC	11	284.80	46	2.0%	285.72	289.00	288.22
7	287.67	EX SHC	10	287.87	66	2.0%	289.19	296.00	291.69

* REFER TO NOTE 1.A. HEREON. REVISE EXISTING DROP TO 4.8 FEET
** REFER TO NOTE 1.B. HEREON.
*** REFER TO NOTE 1.C. HEREON.

AS BUILT:
DATE 9/18/21

- NOTES:**
- EXISTING CONTRACT 20-1018 SHC TO PARCEL 588 (D.H.C. APPROX. 8 FT +/- OF PIPE 3 FT +/- COVER) LOCATED 158FT +/- FROM MANHOLE 500 TOWARD MANHOLE 505. SHALL BE EXPOSED, INSPECTED AND UTILIZED FOR LOT 2 IF DEEMED ACCEPTABLE TO HOWARD COUNTY. EXISTING DROP REQUIRES REVISION TO 4.8 FEET. SIZE SHALL BE ACCEPTABLE TO H.C. PRIOR TO USE.
 - EXISTING CONTRACT 20-1018 SHC TO PARCEL 588 (D.H.C. APPROX. 9 FT +/- OF PIPE 3 FT +/- COVER) LOCATED 10FT +/- FROM MANHOLE 505 TOWARD MANHOLE 500 SHALL BE ABANDONED. THE ABANDONMENT OF A SEWER SERVICE CONNECTION SHALL BE IN ACCORDANCE WITH HOWARD COUNTY STANDARDS. THE EXISTING DROP SEWER HOUSE CONNECTION SHALL BE LOCATED, PIPE TRIMMED, CONNECTION PLUGGED, PARGED IN AND AROUND THE CONNECTION WITH CONCRETE MIX NO. 1 OR FLOWABLE FILL AND COATED WITH TWO COATS OF ASPHALT BRICK COATING.
 - EXISTING CONTRACT 20-1018 SHC TO PARCEL 157 - LOT 1 (6"x6" 1.8 FT OF PIPE 9.5 FT COVER) LOCATED 90FT +/- FROM MANHOLE 500 TOWARD 505. SHALL BE EXPOSED, INSPECTED AND UTILIZED FOR LOT 7 IF DEEMED ACCEPTABLE TO HOWARD COUNTY.
 - EXISTING WATER METER(S), NOTED "TBR" ALONG OLD SCAGGSVILLE ROAD ARE TO BE DISCONNECTED AT THE WATER MAIN PER HOWARD COUNTY REQUIREMENTS. THE ABANDONMENT OF THE EXISTING WATER SERVICE CONNECTION SHALL BE AS SPECIFIED UNDER SECTION 1015.03 OF THE STANDARD SPECIFICATIONS. REMOVAL OF THE EXISTING CORPORATION STOP OR TAPPING SANDS REQUIRES SCHEDULING A SHUTDOWN OF THE WATER MAIN WITH THE BUREAU OF UTILITIES. THE EXISTING CORPORATION STOP SHALL BE REMOVED FROM THE WATER MAIN AND THE PIPE REPAIRED WITH A COUNTY-APPROVED STAINLESS STEEL FULL-CIRCLE REPAIR CLAMP SUCH AS FORD METER FS2, MUELLER 550, OR ROMAC SS2 SERIES.

DEVELOPER
TRINITY HOMES MARY LAND, LLC
3675 PARK AVE., SUITE 301
ELLICOTT CITY, MD 21043
(410) 480-0023

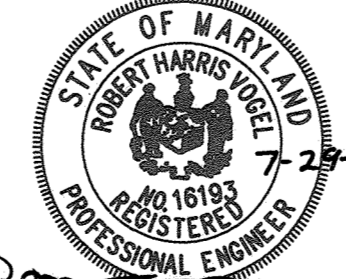
DEPARTMENT OF PUBLIC WORKS
HOWARD COUNTY, MARYLAND

DEPARTMENT OF PLANNING & ZONING
HOWARD COUNTY, MARYLAND

8-9-19
CHIEF, BUREAU OF UTILITIES

8-27-19
CHIEF, DEVELOPMENT ENGINEERING DIVISION

ROBERT H. VOGEL ENGINEERING, INC.
ENGINEERS SURVEYORS PLANNERS
3300 N. RIDGE ROAD, SUITE 110 TEL: 410.461.7666
ELLICOTT CITY, MD 21043 FAX: 410.461.8967



PROFESSIONAL CERTIFICATE
I HEREBY CERTIFY THAT THESE DOCUMENTS WERE PREPARED OR APPROVED BY ME, AND THAT I AM A DAILY LICENSED PROFESSIONAL ENGINEER UNDER THE LAWS OF THE STATE OF MARYLAND, LICENSE NO. 16193, EXPIRATION DATE: 06-27-2018.

DES.	REVISION	DATE
RHV	1	6-1-21
KG	1	7-9-19
RHV	1	08-27-2018

FINAL WATER CONSTRUCTION PLAN
CONTRACT NO. 24-5032-D

DATE: AUGUST 2018 NO. 47

MAGNOLIA MANOR WEST
LOTS 1 - 7 AND OPEN SPACE LOT 8
A SUBDIVISION OF TAX MAP 47 - PARCEL 558
AND A RESUBDIVISION OF
TAX MAP 47 - PARCEL 157 - GIDDINGS PROPERTY -
LOTS 1 AND 2 (PLAT 5708)

SCALE AS SHOWN
SHEET 2 OF 2