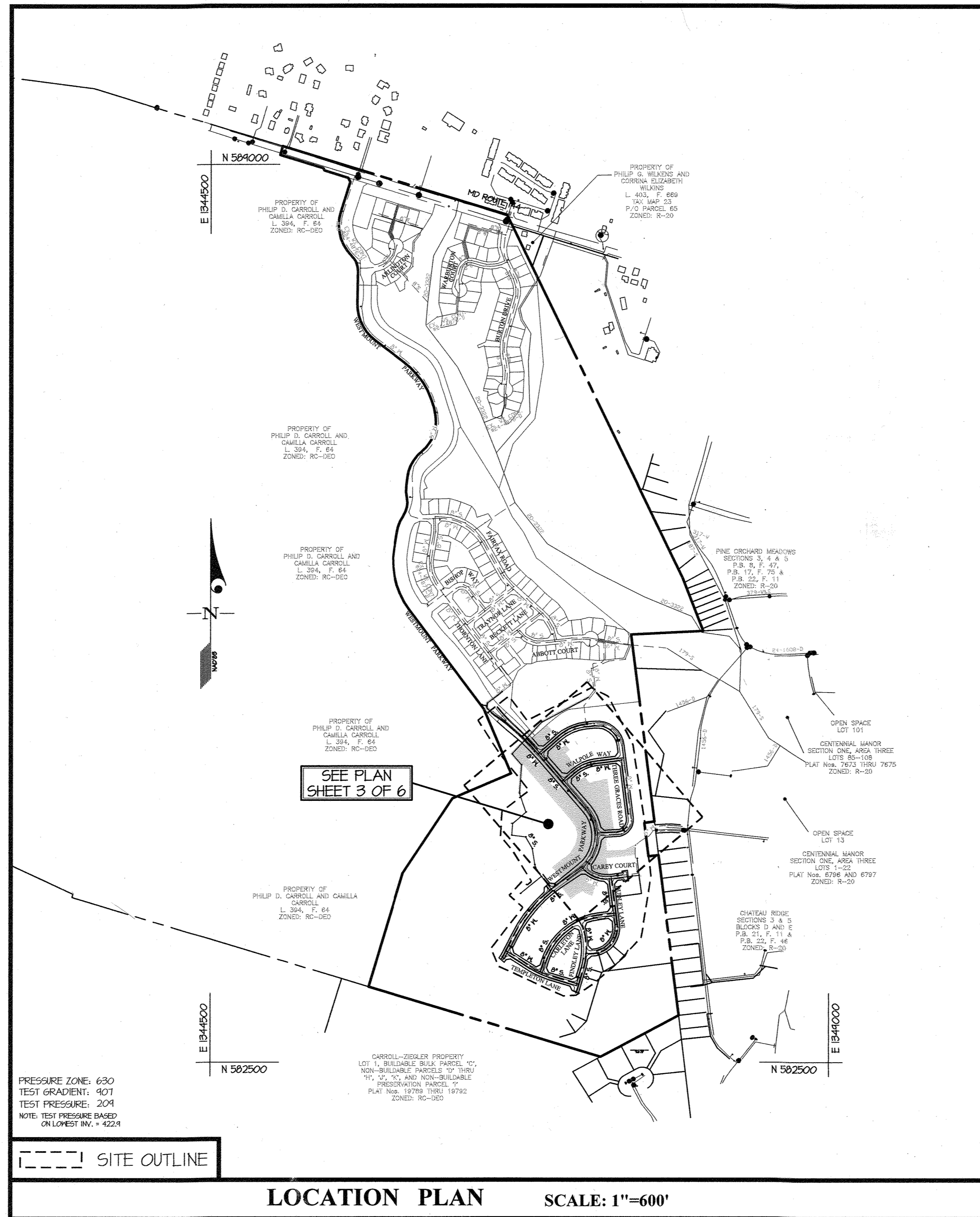


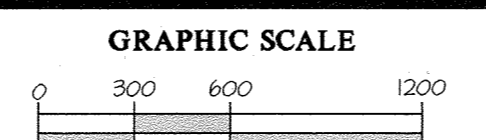
ITEMS	QUANTITIES ESTIMATED	AS-BUILT		
		QUANTITIES	TYPE	MANUFACTURER/SUPPLIER
6" DIP WATER MAIN (CL. 54 DIP)	103 L.F.	103	DIP	AMERICAN
8" PVC WATER MAIN (CL. 900 DR-10)	1060 L.F.	1060	PVC	NATIONAL PIPE
8" DIP WATER MAIN (CL. 54 DIP)	217 L.F.	237	DIP	AMERICAN
1-1/2" W/C	824 L.F.	826	COPPER	MUELLER
1" METER VAULT	20 EA.	20	CONCRETE	HORNE
8"x8" TEE	3 EA.	3	DIP	TYLER/UNION
8"x6" FHT	6 EA.	6	DIP	TYLER/UNION
FIRE HYDRANTS	6 EA.	6	DIP	MUELLER
8" 1/8 BEND	2 EA.	2	DIP	—
8" 1/6 BEND	1 EA.	0	—	—
8" 1/32 BEND	10 EA.	8	DIP	TYLER/UNION
8" 0.5" HDC	2 EA.	0	—	—
8" 1.5" HDC	2 EA.	0	—	—
8" 2" HDC	4 EA.	0	—	—
8" 2.5" HDC	2 EA.	0	—	—
8" 3" HDC	2 EA.	0	—	—
8" VALVE	7 EA.	7	DIP	MUELLER
8" PVC SEWER MAIN (SDR 35 PVC)	1963 L.F.	1964	PVC	NATIONAL
8" DIP SEWER MAIN (CL. 54 DIP)	841 L.F.	842	DIP	AMERICAN
4" MANHOLES	20 EA.	20	CONCRETE	C.P.C.
4" S/C	868 L.F.	870	PVC	NATIONAL
4" CLEANOUT	26 EA.	26	CONCRETE	HORNE
RIVER CROSSING	1 EA.	1	—	—

NAME OF UTILITY CONTRACTOR:

SURVEY AND DRAFTING DIV. CHECKBOX: AS-BUILT DATE:



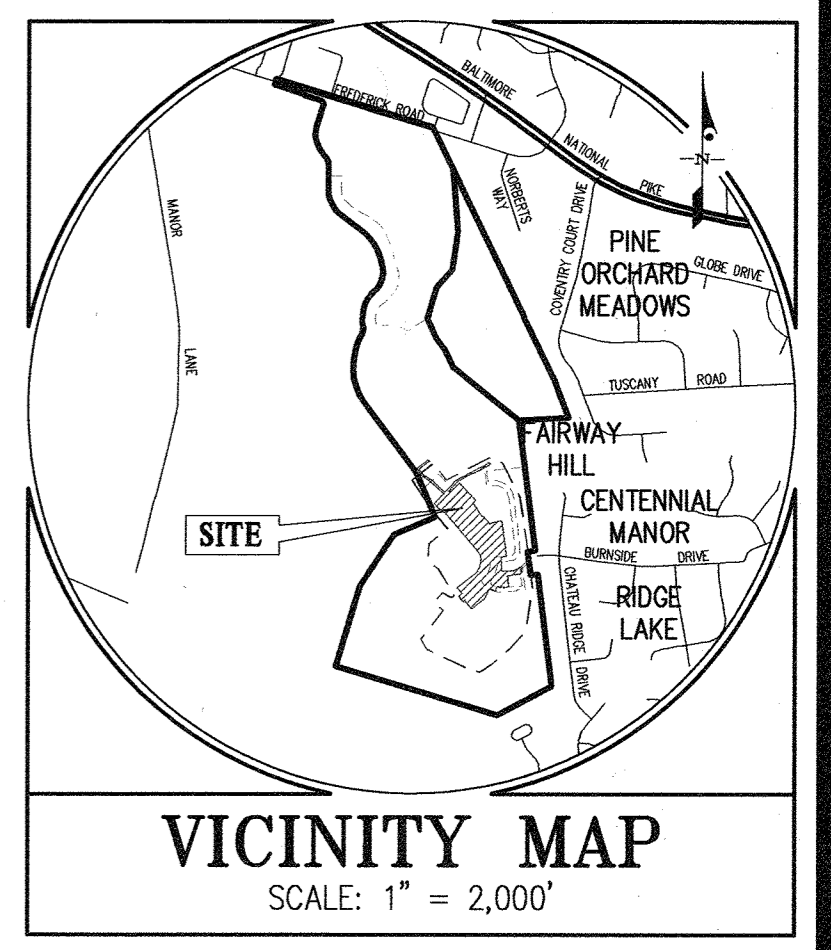
LOCATION PLAN SCALE: 1"=600'



CONTRACT No. 24-4878-D  
**WESTMOUNT**  
 PHASE 3A  
 LOTS 174, 175, 196, 206-220, 228, 229, 237-241, 258-260  
 AND OPEN SPACE LOTS 269, 273, 278-286, 289, 290

**HOWARD COUNTY, MARYLAND**  
**DEPARTMENT OF PUBLIC WORKS**

TYPE OF BUILDING	RESIDENTIAL
NUMBER OF UNITS	20
NUMBER OF S.H.C.'s	20
NUMBER OF W.H.C.'s	20 SINGLE
AREA OF COMMERCIAL LOT/PARCEL	0.0 AC.
SEWER WATERSHED	MIDDLE PATUXENT
PUMPING STATION	N/A



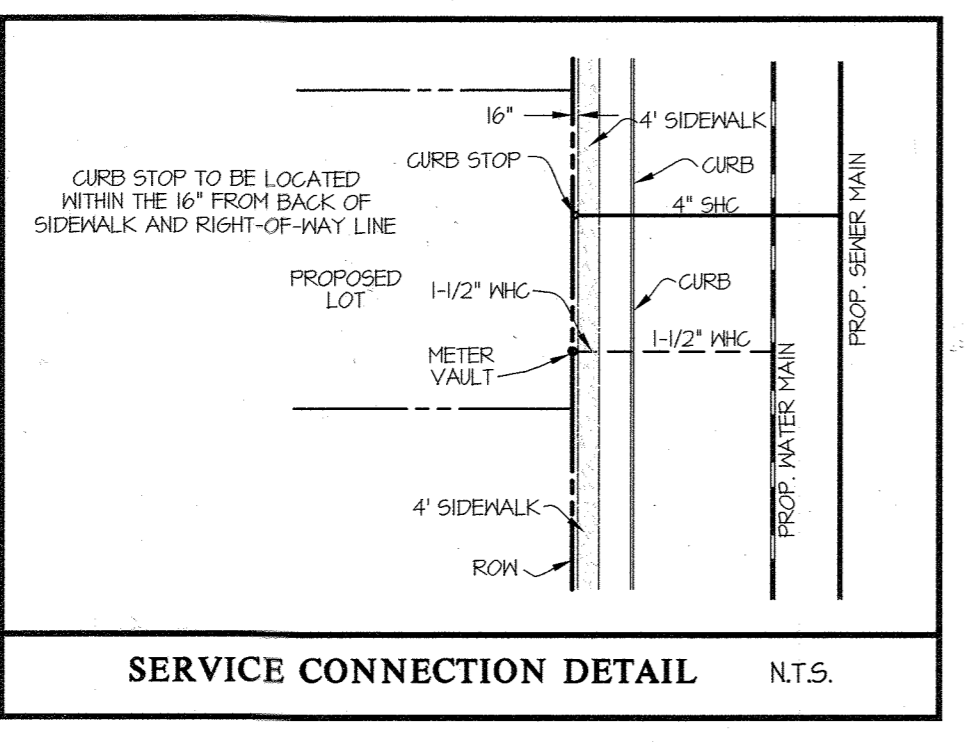
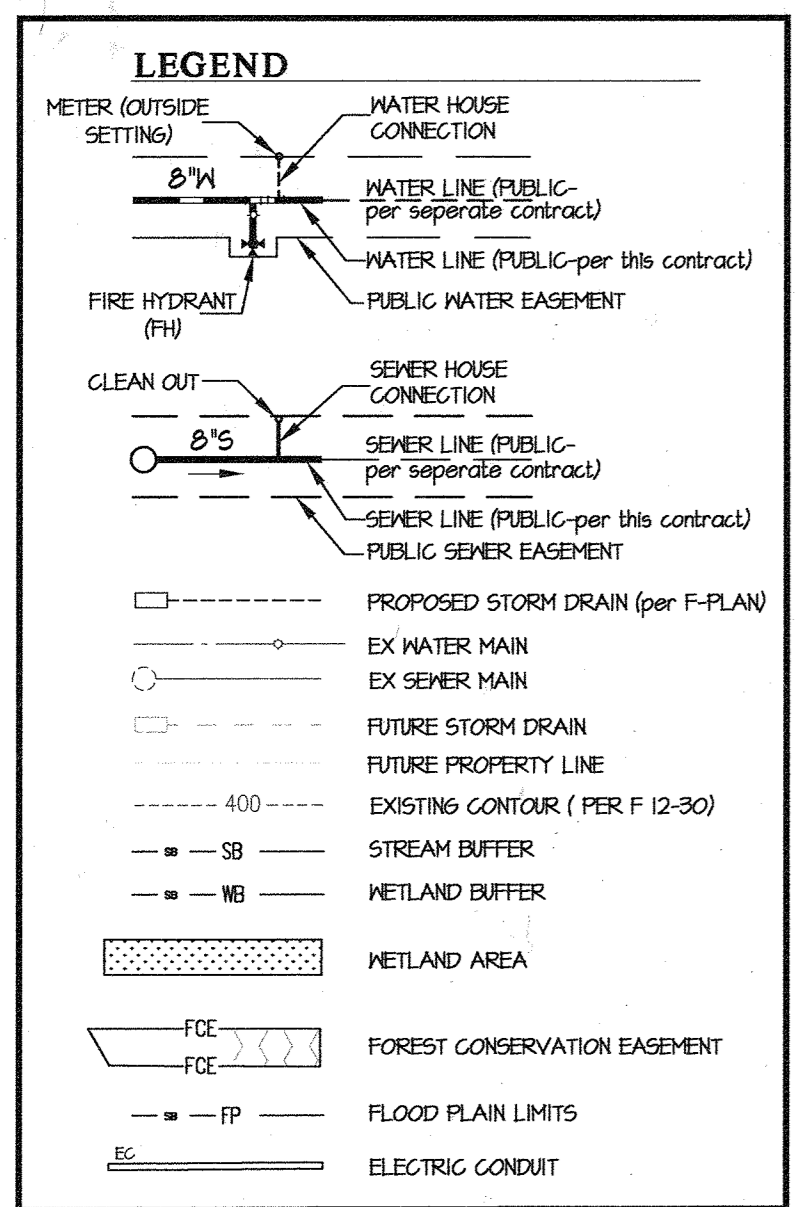
**BENCHMARKS**

16HC: NORTHING: 594180.408	16HD: NORTHING: 590674.171
EASTING: 1341530.147	EASTING: 13400493.566

ADC MAP COORDINATES: MAP 4814 GRID J5 THRU J8  
 GRID K5 THRU K8

- GENERAL NOTES**
- Approximate locations of existing mains are shown. The contractor shall take all necessary precautions to protect existing mains and services and maintain uninterrupted service. Any damage incurred shall be repaired immediately to the satisfaction of the Engineer at the contractor's expense.
  - Topographic field surveys were performed on March, 1991 by SDI and then updated by grade checks performed by Gutschick, Little & Heber, PA and based on F 13-00B. The boundary information is based upon a field survey prepared by Gutschick, Little & Heber, PA on or about June, 2001.
  - Horizontal and Vertical Survey Controls: The coordinates shown on the drawings are based on Maryland State Reference System NAD 83/91 as projected by Howard County geodetic control stations No. 46BC and No. 41EA. All vertical controls are based on NAVD 83. Vertical controls provided on the drawings are standard discs on concrete monuments.
  - All pipe elevations shown are invert elevations unless otherwise noted on the plans.
  - Clear all utilities by a minimum of 12 inches. Clear all poles by 5'-0" minimum or tunnel as required unless otherwise noted. The owner has contacted the utility companies and has made arrangements for tracing of poles as shown on the drawings. In the event the contractor's work requires the tracing of additional poles, any cost incurred by the owner for the tracing of additional poles or damages shall be deducted from monies owed the contractor. The contractor shall coordinate with the utility companies to schedule the tracing of the poles.
  - For details not shown on the drawing, and for materials and construction methods, use Howard County Design Manual, Volume IV, Standard Specifications and Details for Construction (Latest Edition). The contractor shall have a copy of Volume IV on the job.
  - Where test pits have been made on existing utilities, they are noted by the symbol (circle with cross) at the locations of the test pits. A note or notes containing the results of the test pit or pits is included on the drawings. Existing utilities in the vicinity of the proposed work for which test pits have not been dug shall be located by the contractor two weeks in advance of construction operations at his own expense.
  - The contractor shall notify the following utility companies or agencies at least five working days before starting work shown on these plans:
    - AT&T: 1-800-252-1133
    - BGE (Construction Services): 410-631-8113
    - BGE (Emergency): 410-685-0123
    - Bureau of Utilities: 410-313-4800
    - Colonial Pipeline Co.: 410-795-1940
    - Miss Utility: 1-800-251-1117
    - State Highway Administration: 410-531-5533
    - Verizon: 1-800-743-0233
  - Trees and shrubs are to be protected from damage to the maximum extent. Trees and shrubs located within the construction strip are not to be removed or damaged by the contractor.
  - The contractor shall remove trees, stumps and roots along the line of excavation. Payment for such removal shall be included in the unit price bid for construction of the main.
  - The contractor shall notify the Bureau of Highways, Howard County, at (410)-313-1470 at least five working days before open cutting or boring/jacking of any County road for laying water/sewer mains or house connections. The approval of these drawings will constitute compliance with DFR requirements per Section 101.14(a) of the Howard County Code.
- Part II WATER**
- All water mains shall be D.I.P. Class 54 unless otherwise noted.
  - Tops of all water mains shall have a minimum of 3'-6" of cover unless otherwise noted.
  - Valves adjacent to trees shall be strapped to trees.
  - All fittings shall be boltressed or anchored with concrete in accordance with Standard Details unless otherwise provided for on the drawings.
  - Fire hydrants shall be set to the bury line elevations shown on the drawings. All fire hydrants shall be installed in accordance with Standard Details. The soil around the fire hydrant shall be compacted in accordance with Section 1000 and Section 1005 of the Standard Specifications.
  - The contractor shall not operate any water main valves on the existing water system.
  - Tracer wires and continuity test stations shall be installed on all DIP and PVC water mains in accordance with the Howard County Design Manual.
  - For PVC water mains, all records for the Quality Control and Qualification Test Requirements noted in Section 5.1 of the ANNA Standard C400 for PVC pressure pipe shall be submitted with the pipe material certifications or shop drawings prior to approval of the material for use. The test records shall be for the pipe to be installed under this contract. All PVC pipe shall contain markings to allow cross referencing of the pipe supplied to the test records received.
  - Unless otherwise noted on the plans or in the specifications sacrificial anodes shall be installed on all valves and metallic fittings used with PVC water mains in accordance with Volume IV, Standard Specifications and Details for Construction. Seventeen (17) pound Magnesium anodes shall be installed on all valves and ductile iron fittings, including restraints and harnesses. Twelve (12) pound Zinc anodes shall be installed on all stainless steel fittings and saddles used with PVC mains. All "tees" used with PVC mains shall be ductile iron.
  - Proper Assembly of Gasketed PVC Pipe Joints: The manufacturer's insertion line of gasketed PVC pipe joints indicates the maximum depth of insertion of the spigot into the bell. After assembly of the joint, the insertion line shall remain visible. Dual insertion lines on gasketed PVC pipe indicate the maximum and minimum depth of insertion of the spigot into the bell. The contractor shall not over insert or over home the spigot into the bell of PVC pipe.
  - All changes in horizontal or vertical direction of PVC water pipe shall be made with standard bends, 5-degree sweeps or high deflection (HD) couplings. No bending of the pipe or deflecting of PVC pipe joints is permitted. Where high deflection couplings or 5-degree sweeps are permitted, the contractor shall provide one full pipe length (20-foot long) on either side of the high deflection coupling or 5-degree sweep. The contractor shall use a vibratory plate compactor or other approved means to thoroughly compact the #51 stone on both sides of the high deflection coupling or 5-degree sweep, taking care not to use compaction equipment directly over the fitting. PVC high deflection couplings shall be limited to a total deflection of 3-degrees (1 1/2-degree on either end of the coupling), shall be raised for a minimum 200 psi meeting the requirements of ANNA C400 and shall have a minimum lay length of 4-inches and shall have center stops. PVC high deflection couplings shall be Certaintec PVC High Deflection (HD) Stop Couplings or equal. Five degree sweeps shall be bell by spigot, raised for a minimum 225 psi, DR18 meeting the requirements of ANNA C400 and shall be Multi Fittings (pex) Blue Brute DR18 or equal.
  - When PVC high deflection couplings or PVC 5-degree sweeps are used to facilitate changes in horizontal or vertical alignments of ANNA C400 PVC pipelines, the contractor shall install devices for the prevention of over-insertion of the PVC pipe spigots or plain ends into the push on bell joint on both sides of the high deflection couplings and 5-degree sweeps. Bell stops shall be placed at the proper insertion line for the fitting. The bell stop shall be manufactured of ductile iron and incorporate an expansion restraint spring to allow for pipe expansion and contraction. The bell stops shall be Series 5000 Mega-Stop, as manufactured by EBAA Iron, Inc. or approved equal.
  - Per the Fire Sprinkler Code all residential single family dwellings will have a minimum 1-1/2" W/C with 1" meter, outside setting.
- Part III SEWER**
- All sewer mains shall be D.I.P. or P.V.C. unless otherwise noted.
  - All manholes shall be 4'-0" inside diameter unless otherwise noted.
  - Force mains shall be D.I.P. only.
  - Manholes shown with 12" and 16" walls are for brick manholes only.
  - Manholes designated M.T. in plan and profile shall have watertight frame and cover. Standard Detail 65.52. Where watertight manhole frames and covers are used, set top of frame 1'-6" above finished grade unless otherwise noted on the drawings.
  - House(s) with the symbol "C.N.S." indicates that the cellar cannot be served.

NOTE: THIS PLAN SUPERCEDES PLAN SIGNED ON 02/13/14



- SHEET INDEX**
- COVER SHEET
  - PHASING KEY MAP
  - WATER AND SEWER PLAN (1"=50')
  - WATER AND SEWER PROFILES
  - WATER AND SEWER PROFILES
  - MINIMUM CELLAR ELEVATIONS AND AS-BUILT INFORMATION

SEDIMENT CONTROL MEASURES WILL BE IMPLEMENTED IN ACCORDANCE WITH F-17-001, SECTION 308 OF THE SPECIFICATIONS AT FINAL ROAD PLAN STAGE.

REMOVED FOR HOWARD SOIL CONSERVATION DISTRICT AND MEETS TECHNICAL REQUIREMENT.

SIGNATURE: Alexander Butch DATE: 03/01/2021

**U.S.D.A. NATURAL RESOURCES CONSERVATION SERVICE**

THIS DEVELOPMENT PLAN IS APPROVED FOR SOIL EROSION AND SEDIMENT CONTROL BY THE HOWARD SOIL CONSERVATION DISTRICT.

APPROVED: Alexander Butch DATE: 03/01/2021

OWNER/DEVELOPER  
 WESTMOUNT DEVELOPMENT CORP.  
 301 INTERNATIONAL CIRCLE  
 SUITE 130  
 HUNT VALLEY, MD 21030  
 410-484-4494  
 ATTN: ROBERT GOODIER

DEPARTMENT OF PUBLIC WORKS  
 HOWARD COUNTY, MARYLAND

[Signature] 2/17/2021  
 CHIEF, BUREAU OF UTILITIES

DEPARTMENT OF PLANNING AND ZONING  
 HOWARD COUNTY, MARYLAND

[Signature] 3-11-21  
 CHIEF, DEVELOPMENT ENGINEERING DIVISION

**GLW**  
 PLANNING | ENGINEERING | SURVEYING

3909 NATIONAL DRIVE | SUITE 250 | BURTONSVILLE, MD 20866 | GLW.PA.COM  
 PHONE: 301-421-4024 | BALT: 410-880-1820 | DC/VA: 301-989-2524 | FAX: 301-421-4188

DESIGNED BY: JRD/AWL  
 DATE: FEB., 2021  
 DRAWN BY: AWL  
 G.L.W. No. 13013  
 DEV

PROFESSIONAL CERTIFICATION  
 I HEREBY CERTIFY THAT THESE PLANS WERE PREPARED OR APPROVED BY ME AND THAT I AM A DULY LICENSED PROFESSIONAL ENGINEER UNDER THE LAWS OF THE STATE OF MARYLAND, LICENSE NO. 12375  
 EXP. DATE: MAY 26, 2022  
[Signature]

WRA	AS BUILT	DATE
AWL	CREATED PHASES 3A THRU 3E FROM THIS CONTRACT. THE LIMITS OF PHASES 3B THRU 3E HAVE BEEN REMOVED FROM THIS CONTRACT.	11/11/21
KP	CHANGED WATER MAIN MATERIAL TO PVC FOR 8" MAINS, REVISED TABLES AND NOTES ACCORDINGLY.	2-3-21
GT	REMOVED A PORTION OF PUBLIC WATER UNDER CONT. 24-4878-D AND ADDED IT TO THIS CONTRACT, REVISED TABLES AND NOTES ACCORDINGLY.	4-22-20
BY NO	REVISION	12-18-19

**COVER SHEET**

600' SCALE MAP NO. 23 BLOCK NO. 6 & 12

**WESTMOUNT**  
 CONTRACT No. 24-4878-D  
 PHASE 3A

LOTS 174, 175, 196, 206-220, 228, 229, 237-241, 258-260  
 AND OPEN SPACE LOTS 269, 273, 278-286, 289, 290

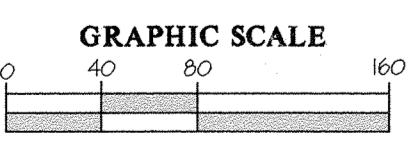
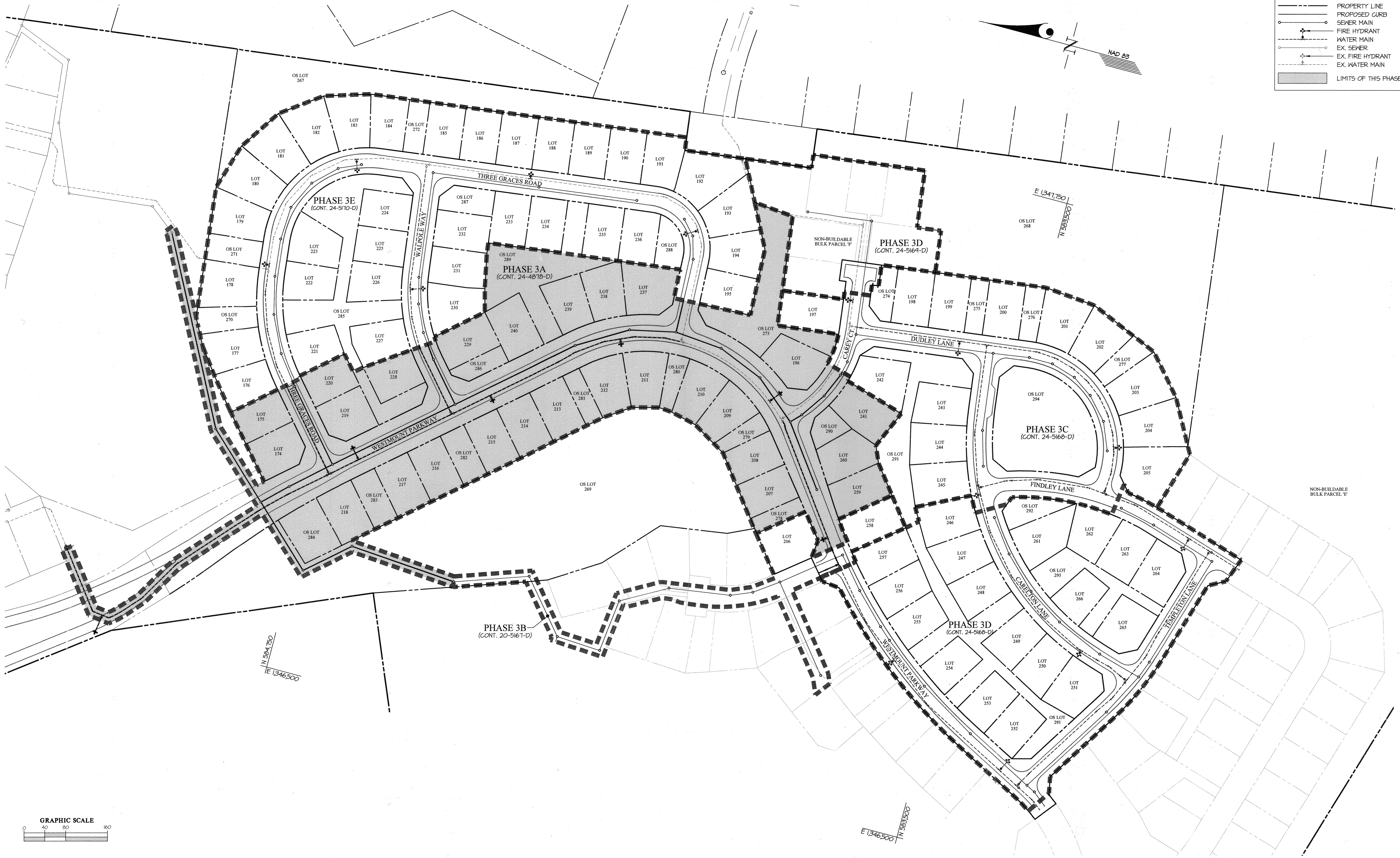
HOWARD COUNTY, MARYLAND  
 ELECTION DISTRICT NO. 2

SCALE AS SHOWN  
 SHEET 1 OF 6

L:\CAD\DRAWINGS\13013\PLAN BY GLW\W5\FINALS\PHASE 3\PHASE 3A\13013-PA3A-FINALS-MS-COVER SHEET.dwg



LEGEND	
	PROPERTY LINE
	PROPOSED CURB
	SEWER MAIN
	FIRE HYDRANT
	WATER MAIN
	EX. SEWER
	EX. FIRE HYDRANT
	EX. WATER MAIN
	LIMITS OF THIS PHASE



NOTE: THIS PLAN SUPERCEDES PLAN SIGNED ON 11/04/20

L:\CADD\DRAWINGS\3013\PLANS BY GLW\WESTMOUNT PHASE 3A\3013-PH3A-FINALS-MS-KEY MAP.dwg  
 DATE: 2/17/2021 10:58:00 AM

<p>DEPARTMENT OF PUBLIC WORKS HOWARD COUNTY, MARYLAND</p> <p><i>[Signature]</i> CHIEF, BUREAU OF UTILITIES</p>	<p>DEPARTMENT OF PLANNING AND ZONING HOWARD COUNTY, MARYLAND</p> <p><i>[Signature]</i> CHIEF, DEVELOPMENT ENGINEERING DIVISION</p>	 PLANNING   ENGINEERING   SURVEYING 3909 NATIONAL DRIVE   SUITE 250   BURTONSVILLE, MD 20866   GLWPA.COM PHONE: 301-421-4024   BALT: 410-880-1820   DC/VA: 301-989-2524   FAX: 301-421-4188	<p>DESIGNED BY: _____</p> <p>DRAWN BY: <b>AWL</b></p> <p>CHECKED BY: <b>DEV</b></p>	<p>DATE: <b>FEB., 2021</b></p> <p>G.L.W. No. <b>13013</b></p>	<p>PROFESSIONAL CERTIFICATION</p> <p>I HEREBY CERTIFY THAT THESE PLANS WERE PREPARED OR APPROVED BY ME, AND THAT I AM A DULY LICENSED PROFESSIONAL ENGINEER UNDER THE LAWS OF THE STATE OF MARYLAND.</p> <p>LICENSE NO. <b>12975</b>        EXP. DATE: <b>MAY 26, 2022</b></p> <p><i>[Signature]</i></p>	<table border="1" style="width: 100%; border-collapse: collapse;"> <thead> <tr> <th>BY</th> <th>NO</th> <th>REVISION</th> <th>DATE</th> </tr> </thead> <tbody> <tr> <td>AWL</td> <td>1</td> <td>CREATED PHASES 3A THRU 3D FROM THIS CONTRACT. THE LIMITS OF PHASES 3B THRU 3D HAVE BEEN REMOVED FROM THIS CONTRACT.</td> <td>2-3-21</td> </tr> </tbody> </table>	BY	NO	REVISION	DATE	AWL	1	CREATED PHASES 3A THRU 3D FROM THIS CONTRACT. THE LIMITS OF PHASES 3B THRU 3D HAVE BEEN REMOVED FROM THIS CONTRACT.	2-3-21	<p><b>PHASING KEY MAP</b></p> <p>600' SCALE MAP NO. 23    BLOCK NO. 6 &amp; 12</p>	<p><b>WESTMOUNT</b>          CONTRACT No. 24-4878-D          PHASE 3A</p> <p>LOTS 174, 175, 196, 206-220, 228, 229, 237-241, 258-260          AND OPEN SPACE LOTS 269, 273, 278-286, 289, 290</p> <p>HOWARD COUNTY, MARYLAND          ELECTION DISTRICT No. 2</p>	<p>SCALE 1"=80'</p> <p>SHEET 2 OF 6</p>
BY	NO	REVISION	DATE														
AWL	1	CREATED PHASES 3A THRU 3D FROM THIS CONTRACT. THE LIMITS OF PHASES 3B THRU 3D HAVE BEEN REMOVED FROM THIS CONTRACT.	2-3-21														



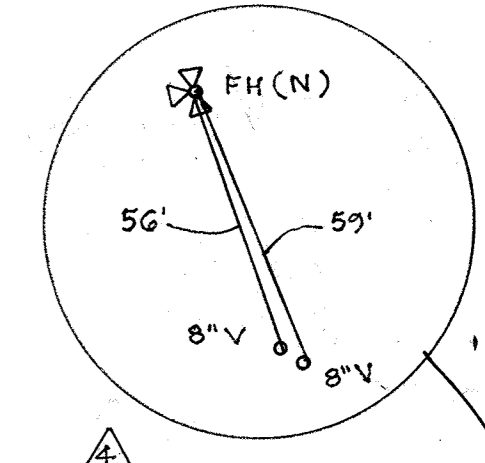
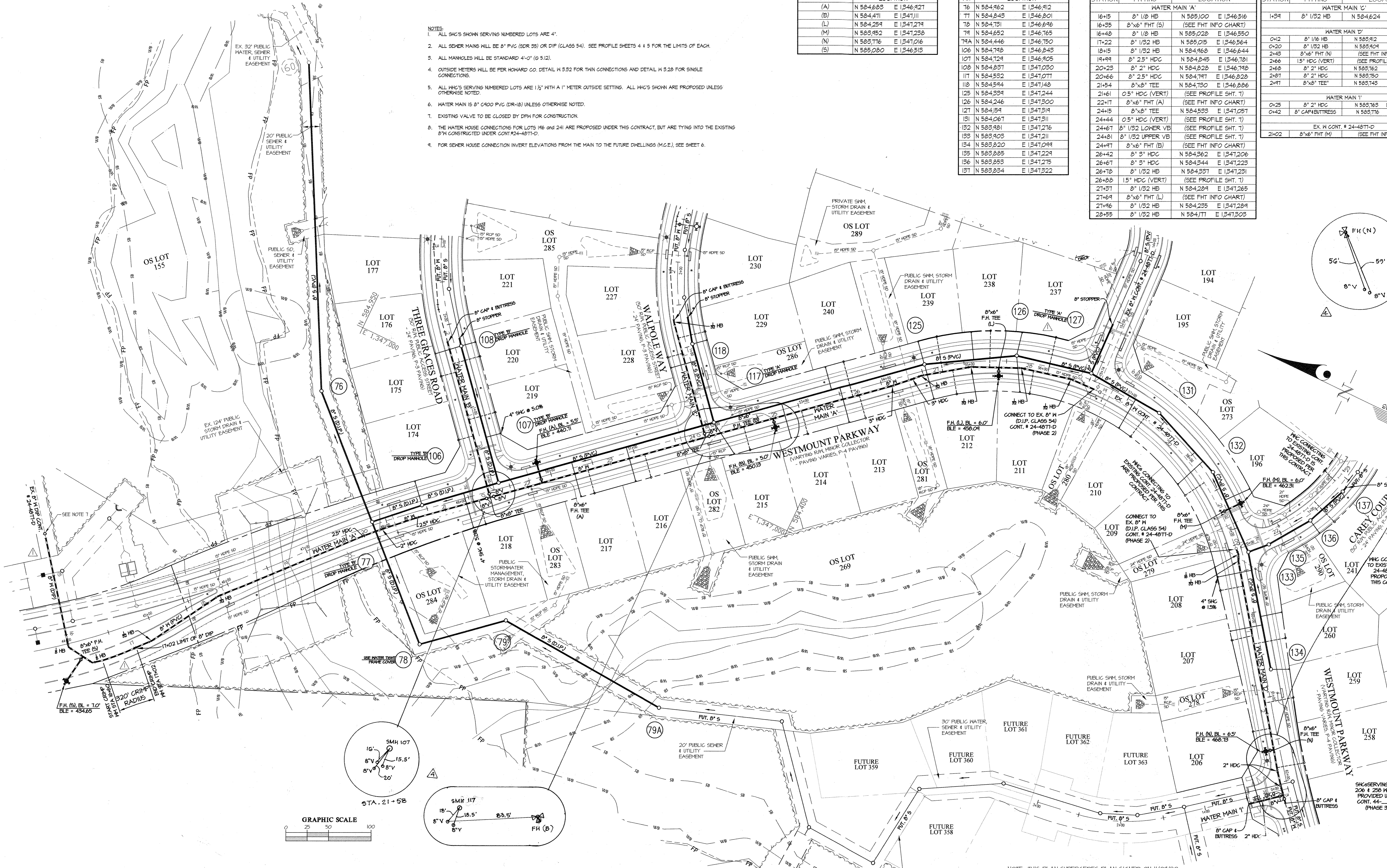
FIRE HYDRANT TEE INFORMATION		
FHT	LOCATION	
(A)	N 584.683	E 1346.127
(B)	N 584.471	E 1347.111
(L)	N 584.251	E 1347.271
(M)	N 583.952	E 1347.238
(N)	N 583.716	E 1347.016
(S)	N 585.080	E 1346.513

SEWER MANHOLE INFORMATION		
MH	LOCATION	
76	N 584.962	E 1346.912
77	N 584.843	E 1346.801
78	N 584.731	E 1346.696
79	N 584.652	E 1346.765
79A	N 584.446	E 1346.750
106	N 584.748	E 1346.843
107	N 584.124	E 1346.909
108	N 584.837	E 1347.030
109	N 584.532	E 1347.077
110	N 584.594	E 1347.148
117	N 584.934	E 1347.244
126	N 584.246	E 1347.300
127	N 584.154	E 1347.314
131	N 584.067	E 1347.311
132	N 583.901	E 1347.276
133	N 583.903	E 1347.211
134	N 583.820	E 1347.049
135	N 583.885	E 1347.229
136	N 583.853	E 1347.275
137	N 583.834	E 1347.322

FITTING CHART			
STATION	FITTING	LOCATION	
WATER MAIN 'A'			
16+15	8" 1/8" HB	N 585.100	E 1346.516
16+35	8"x6" FHT (S)	(SEE FHT INFO CHART)	
16+48	8" 1/8" HB	N 585.028	E 1346.550
17+22	8" 1/32" HB	N 585.015	E 1346.564
18+15	8" 1/32" HB	N 584.968	E 1346.644
19+91	8" 2 1/2" HDC	N 584.845	E 1346.781
20+23	8" 2" HDC	N 584.828	E 1346.798
20+66	8" 2 1/2" HDC	N 584.717	E 1346.828
21+54	8"x8" TEE	N 584.730	E 1346.886
21+61	0 5/8" HDC (VERT)	(SEE PROFILE SHT. 7)	
22+17	8"x6" FHT (A)	(SEE FHT INFO CHART)	
24+15	8"x8" TEE	N 584.533	E 1347.057
24+44	0 5/8" HDC (VERT)	(SEE PROFILE SHT. 7)	
24+61	8" 1/32" LOWER VB	(SEE PROFILE SHT. 7)	
24+81	8" 1/32" UPPER VB	(SEE PROFILE SHT. 7)	
24+97	8"x6" FHT (B)	(SEE FHT INFO CHART)	
26+42	8" 3" HDC	N 584.362	E 1347.206
26+67	8" 3" HDC	N 584.344	E 1347.223
26+78	8" 1/32" HB	N 584.337	E 1347.231
26+88	15" HDC (VERT)	(SEE PROFILE SHT. 7)	
27+57	8" 1/32" HB	N 584.284	E 1347.265
27+64	8"x6" FHT (L)	(SEE FHT INFO CHART)	
27+96	8" 1/32" HB	N 584.235	E 1347.284
28+55	8" 1/32" HB	N 584.171	E 1347.303

FITTING CHART			
STATION	FITTING	LOCATION	
WATER MAIN 'C'			
1+34	8" 1/32" HB	N 584.624	E 1347.162
WATER MAIN 'D'			
0+12	8" 1/8" HB	N 583.912	E 1347.203
0+20	8" 1/32" HB	N 583.904	E 1347.196
2+43	8"x8" FHT (N)	(SEE FHT INFO CHART)	
2+66	15" HDC (VERT)	(SEE PROFILE SHEET 9)	
2+87	8" 2" HDC	N 583.762	E 1346.946
2+87	8" 2" HDC	N 583.750	E 1346.981
2+97	8"x8" TEE	N 583.743	E 1346.975
WATER MAIN 'I'			
0+25	8" 2" HDC	N 583.763	E 1346.937
0+42	8" CAP/BUTRESS	N 583.776	E 1346.947
EX. W. CONT. # 24-4871-D			
21+02	8"x6" FHT (M)	(SEE FHT INFO CHART)	

- NOTES:
- ALL SHC'S SHOWN SERVING NUMBERED LOTS ARE 4".
  - ALL SEWER MAINS WILL BE 8" PVC (SDR 35) OR DIP (CLASS 54). SEE PROFILE SHEETS 4 & 5 FOR THE LIMITS OF EACH.
  - ALL MANHOLES WILL BE STANDARD 4'-0" (G 5.12).
  - OUTSIDE METERS WILL BE PER HOWARD CO. DETAIL H 532 FOR TWIN CONNECTIONS AND DETAIL H 528 FOR SINGLE CONNECTIONS.
  - ALL WMC'S SERVING NUMBERED LOTS ARE 1 1/2" WITH A 1" METER OUTSIDE SETTING. ALL WMC'S SHOWN ARE PROPOSED UNLESS OTHERWISE NOTED.
  - WATER MAIN IS 8" C400 PVC (DR-18) UNLESS OTHERWISE NOTED.
  - EXISTING VALVE TO BE CLOSED BY DPM FOR CONSTRUCTION.
  - THE WATER HOUSE CONNECTIONS FOR LOTS 196 AND 241 ARE PROPOSED UNDER THIS CONTRACT, BUT ARE TYING INTO THE EXISTING 8" WMC CONSTRUCTED UNDER CONT. #24-4871-D.
  - FOR SEWER HOUSE CONNECTION INVERT ELEVATIONS FROM THE MAIN TO THE FUTURE DWELLINGS (M.C.E.), SEE SHEET 6.

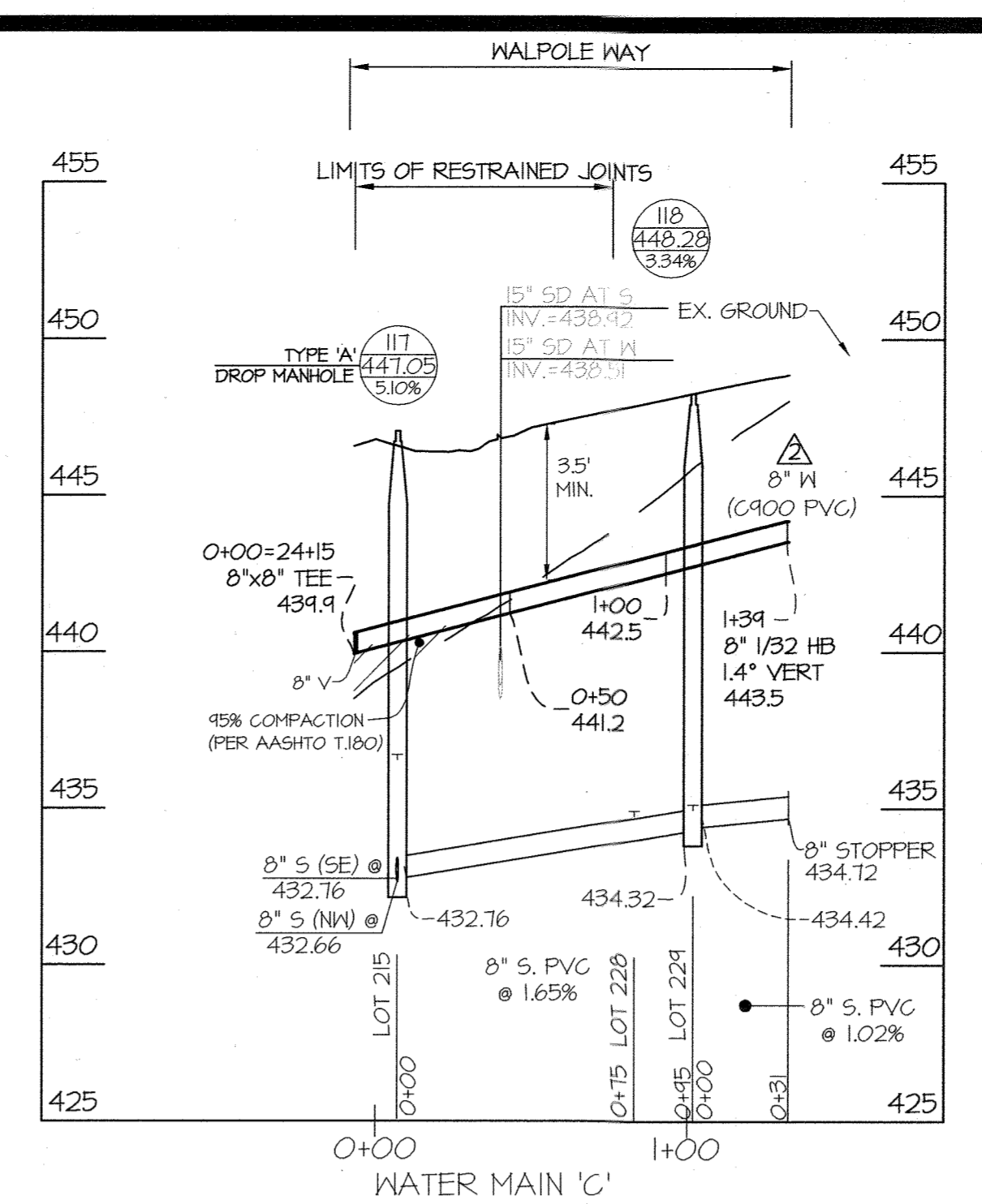
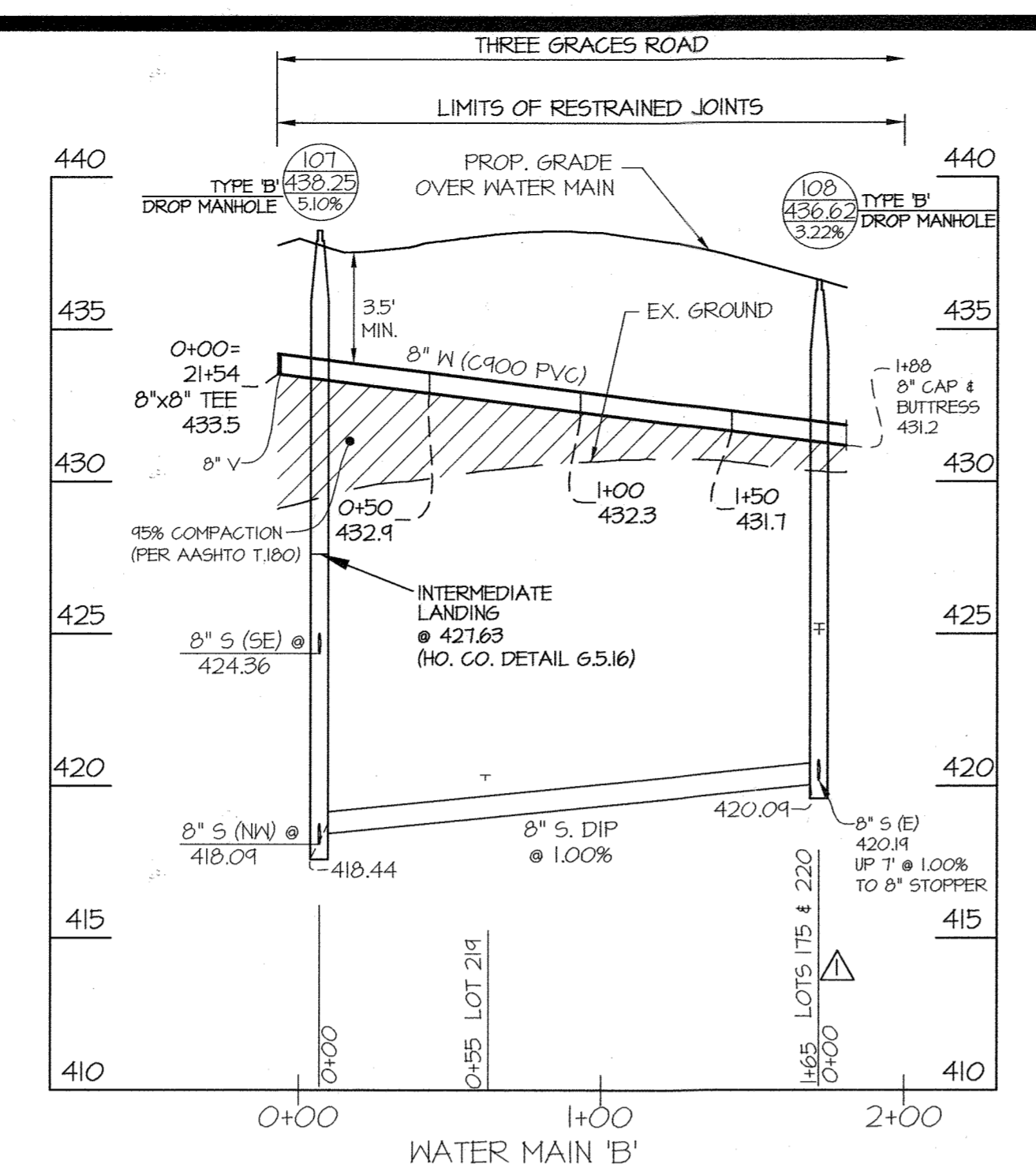
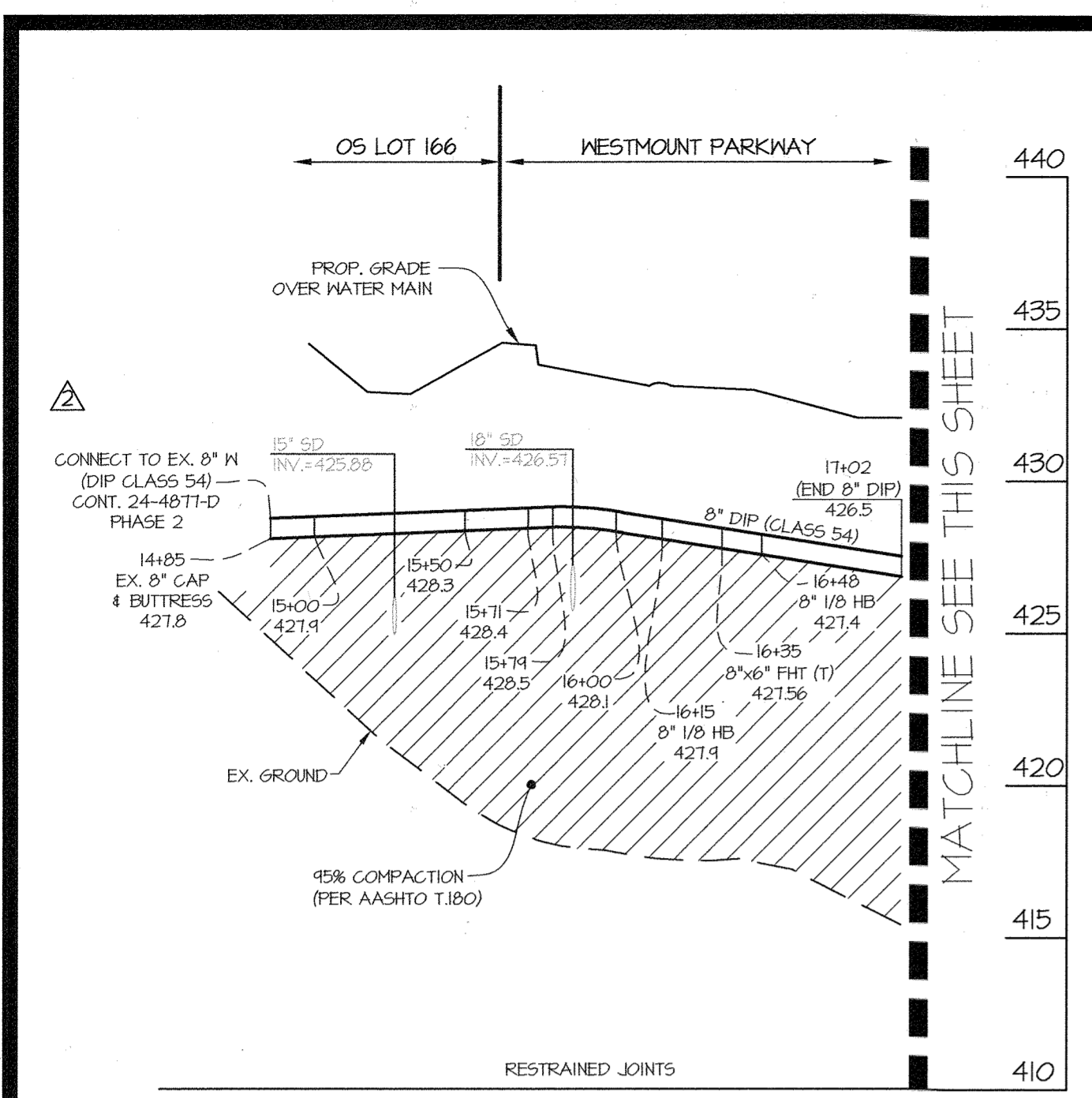


L:\CAD\DRAWINGS\1301\PLANS BY GLW\WESTMOUNT PHASE 3\PHASE 3A\13013-3A-FINALS-MS-PLAN.dwg

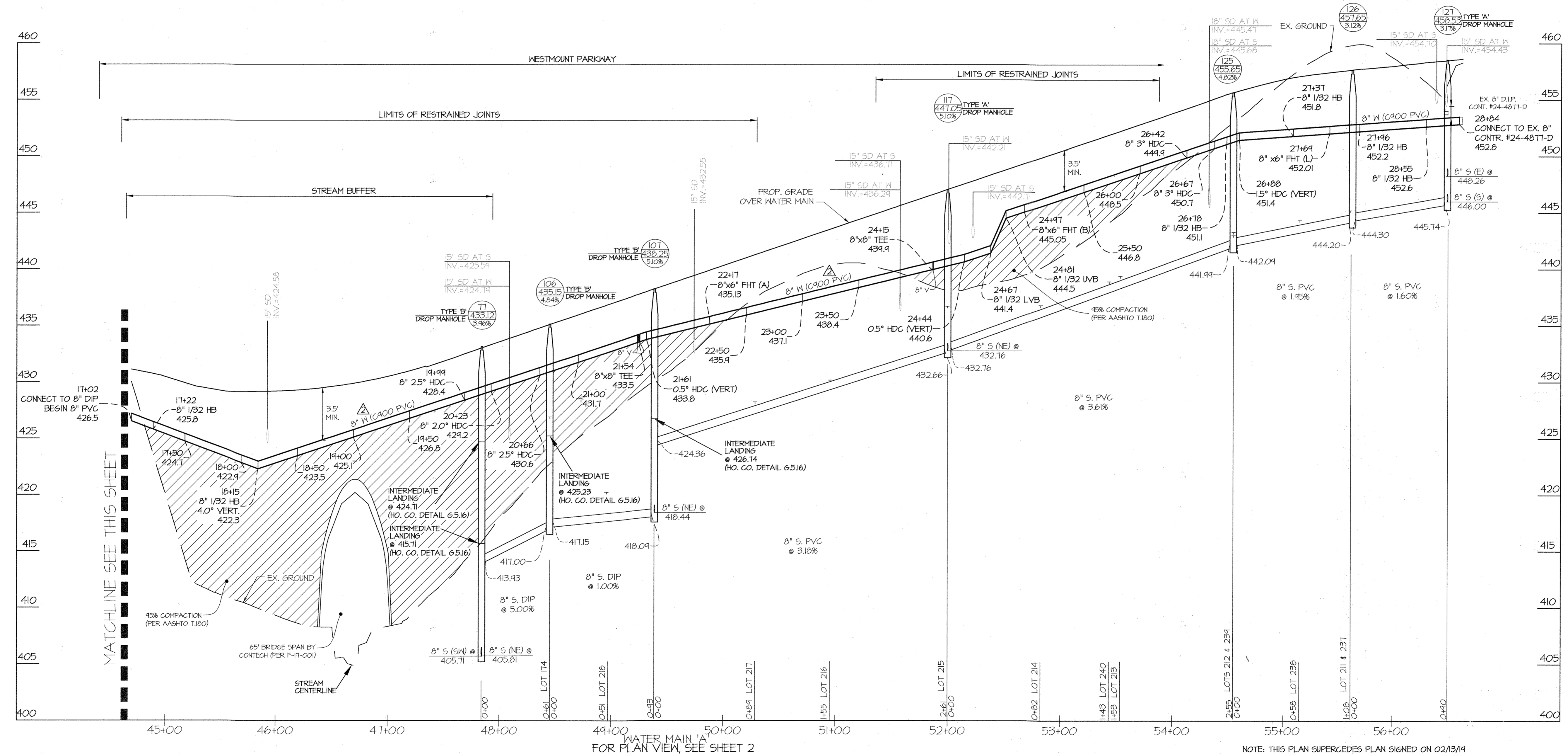
DEPARTMENT OF PUBLIC WORKS HOWARD COUNTY, MARYLAND CHIEF, BUREAU OF UTILITIES	DEPARTMENT OF PLANNING AND ZONING HOWARD COUNTY, MARYLAND CHIEF, DEVELOPMENT ENGINEERING DIVISION	PLANNING   ENGINEERING   SURVEYING 3909 NATIONAL DRIVE   SUITE 250   BURTONSVILLE, MD 20886   GLWPA.COM PHONE: 301-421-4024   BALT: 410-680-1820   DC/VA: 301-989-2524   FAX: 301-421-4168	DESIGNED BY: JRD DRAWN BY: AWL CHECKED BY: DEV	DATE: FEB. 2021 G.L.W. No. 13013	PROFESSIONAL CERTIFICATION I HEREBY CERTIFY THAT THESE PLANS WERE PREPARED OR APPROVED BY ME, AND THAT I AM A DULY LICENSED PROFESSIONAL ENGINEER UNDER THE LAWS OF THE STATE OF MARYLAND, LICENSE NO. 12375 EXP. DATE: MAY 26, 2022 	<table border="1"> <tr> <th>BY</th> <th>NO</th> <th>REVISION</th> <th>DATE</th> </tr> <tr> <td>AWL</td> <td>1</td> <td>AS BUILT</td> <td>11/11/21</td> </tr> <tr> <td>AWL</td> <td>2</td> <td>CREATED PHASES 3A THRU 3E FROM THIS CONTRACT. THE LIMITS OF PHASES 3B THRU 3E HAVE BEEN REMOVED FROM THIS CONTRACT.</td> <td>2-3-21</td> </tr> <tr> <td>AWL</td> <td>3</td> <td>CHANGED WATER MAIN MATERIAL TO PVC AS NOTED FOR 8" MAINS, REVISED TABLES AND NOTES ACCORDINGLY.</td> <td>9-22-20</td> </tr> <tr> <td>GT</td> <td>4</td> <td>REMOVED A PORTION OF PUBLIC WATER PROPOSED UNDER CONT. #24-4871-D AND ADDED IT TO THIS CONTRACT, REVISED TABLES AND NOTES ACCORDINGLY.</td> <td>12-18-19</td> </tr> </table>	BY	NO	REVISION	DATE	AWL	1	AS BUILT	11/11/21	AWL	2	CREATED PHASES 3A THRU 3E FROM THIS CONTRACT. THE LIMITS OF PHASES 3B THRU 3E HAVE BEEN REMOVED FROM THIS CONTRACT.	2-3-21	AWL	3	CHANGED WATER MAIN MATERIAL TO PVC AS NOTED FOR 8" MAINS, REVISED TABLES AND NOTES ACCORDINGLY.	9-22-20	GT	4	REMOVED A PORTION OF PUBLIC WATER PROPOSED UNDER CONT. #24-4871-D AND ADDED IT TO THIS CONTRACT, REVISED TABLES AND NOTES ACCORDINGLY.	12-18-19	WATER and SEWER PLAN 600' SCALE MAP NO. 23 BLOCK NO. 6 & 12	WESTMOUNT CONTRACT No. 24-4878-D PHASE 3A LOTS 174, 175, 196, 206-220, 228, 229, 237-241, 258-260 AND OPEN SPACE LOTS 269, 273, 278-286, 289, 290 HOWARD COUNTY, MARYLAND ELECTION DISTRICT No. 2	SCALE: 1"=50' SHEET: 3 OF 6
			BY	NO	REVISION	DATE																							
AWL	1	AS BUILT	11/11/21																										
AWL	2	CREATED PHASES 3A THRU 3E FROM THIS CONTRACT. THE LIMITS OF PHASES 3B THRU 3E HAVE BEEN REMOVED FROM THIS CONTRACT.	2-3-21																										
AWL	3	CHANGED WATER MAIN MATERIAL TO PVC AS NOTED FOR 8" MAINS, REVISED TABLES AND NOTES ACCORDINGLY.	9-22-20																										
GT	4	REMOVED A PORTION OF PUBLIC WATER PROPOSED UNDER CONT. #24-4871-D AND ADDED IT TO THIS CONTRACT, REVISED TABLES AND NOTES ACCORDINGLY.	12-18-19																										

NOTE: THIS PLAN SUPERCEDES PLAN SIGNED ON 11/09/20





- NOTES:
1. THE SYMBOL THAT REPRESENTS THE LOCATION OF A SEWER HOUSE CONNECTION IS SHOWN AT THE ELEVATION OF THE CONNECTION AT EITHER THE EDGE OF THE RIGHT-OF-WAY LINE OR EASEMENT LINE.
  2. FOR SEWER HOUSE CONNECTION INVERTS AT POINTS BETWEEN THE MAIN AND FUTURE DWELLING, SEE SHEET 6.
  3. FOR MINIMUM CELLAR ELEVATIONS (M.C.E.), SEE SHEET 6.
  4. OTHER THAN SEWER HOUSE CONNECTIONS AT MANHOLES, ALL CONNECTIONS WILL TIE INTO THE MAIN, MATCHING CENTERLINES.
  5. ALL D.I.P. WATER MAINS ARE CLASS 54 UNLESS OTHERWISE NOTED.
  6. ALL P.V.C. WATER MAINS ARE C900 (DR-18) UNLESS OTHERWISE NOTED.
  7. ALL P.V.C. SEWER MAINS ARE SDR 35 UNLESS OTHERWISE NOTED.
  8. ALL D.I.P. SEWER MAINS ARE CLASS 54 UNLESS OTHERWISE NOTED. SEE PROFILES, THIS SHEET & SHEET 5 FOR LIMITS OF D.I.P.



NOTE: THIS PLAN SUPERCEDES PLAN SIGNED ON 02/13/14

DEPARTMENT OF PUBLIC WORKS  
HOWARD COUNTY, MARYLAND

*[Signature]*  
CHIEF, BUREAU OF UTILITIES

2/17/2021  
DATE

DEPARTMENT OF PLANNING AND ZONING  
HOWARD COUNTY, MARYLAND

*[Signature]*  
CHIEF, DEVELOPMENT ENGINEERING DIVISION

3-11-21  
DATE

**GLW**  
PLANNING | ENGINEERING | SURVEYING

3009 NATIONAL DRIVE | SUITE 250 | BURTONSVILLE, MD 20886 | GLW.PA.COM  
PHONE: 301-421-0241 | BALT.: 410-880-1820 | DC/VA: 301-989-2524 | FAX: 301-421-4188

DESIGNED BY: JRD  
DRAWN BY: AWL  
CHECKED BY: DEV

DATE: FEB. 2021  
G.L.W. No. 13013

PROFESSIONAL CERTIFICATION  
I HEREBY CERTIFY THAT THESE PLANS WERE PREPARED OR APPROVED BY ME, AND THAT I AM A DULY LICENSED PROFESSIONAL ENGINEER UNDER THE LAWS OF THE STATE OF MARYLAND, LICENSE NO. 12975  
EXP. DATE: MAY 25, 2022

*[Signature]*  
2/17/21

BY	NO	REVISION	DATE
AWL	1	CREATED PHASES 3A THRU 3E FROM THIS CONTRACT. THE LIMITS OF PHASES 3B THRU 3E HAVE BEEN REMOVED FROM THIS CONTRACT CHANGED WATER MAIN MATERIAL TO PVC AS NOTED FOR 8" MAINS, REVISED TABLES AND NOTES ACCORDINGLY	2-3-21
AWL	2	REMOVED A PORTION OF PUBLIC WATER PROPOSED UNDER VENT. #24-4811-D AND ADDED IT TO THIS CONTRACT, REVISED TABLES AND NOTES ACCORDINGLY	9-22-20
GT	3		12-18-19

WATER and SEWER PROFILES

600' SCALE MAP NO. 23 BLOCK NO. 6 & 12

**WESTMOUNT**  
CONTRACT No. 24-4878-D  
PHASE 3A

LOTS 174, 175, 196, 206-220, 228, 229, 237-241, 258-260 AND OPEN SPACE LOTS 269, 273, 278-286, 289, 290

HOWARD COUNTY, MARYLAND  
ELECTION DISTRICT No. 2

SCALE  
1"=50'(H)  
1"=5'(V)

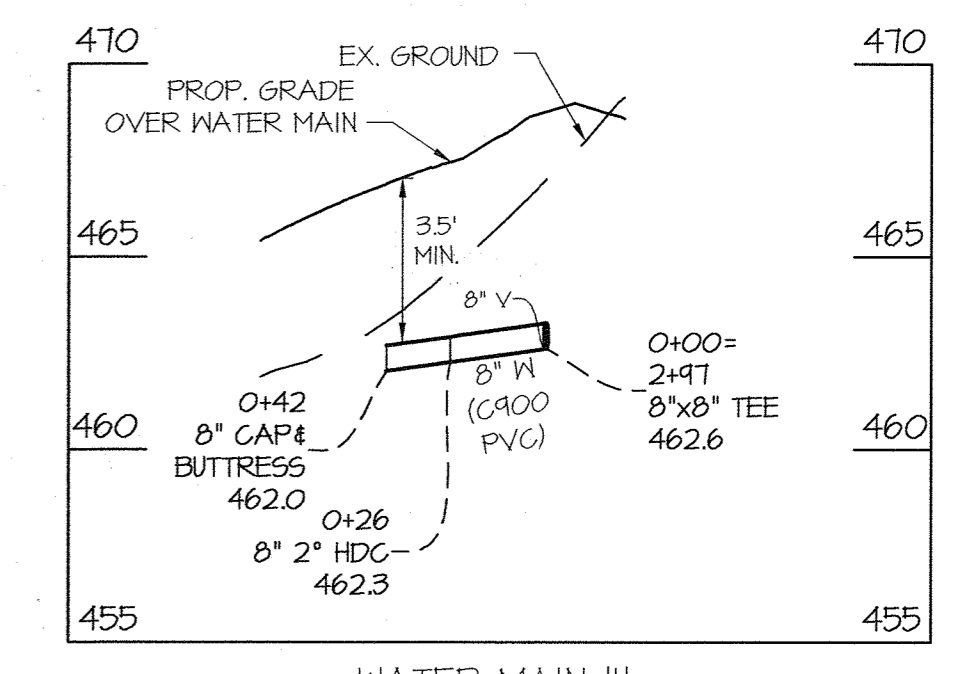
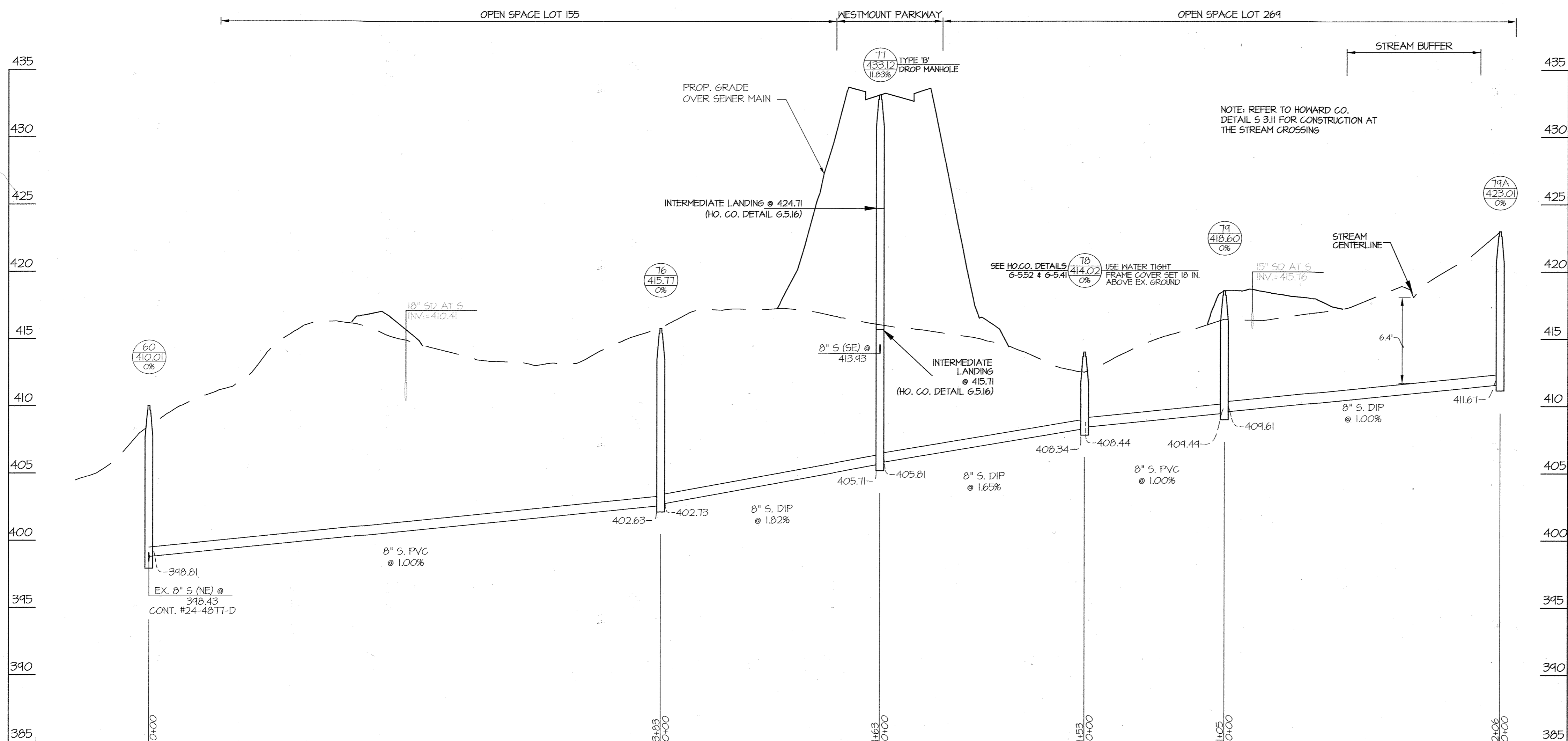
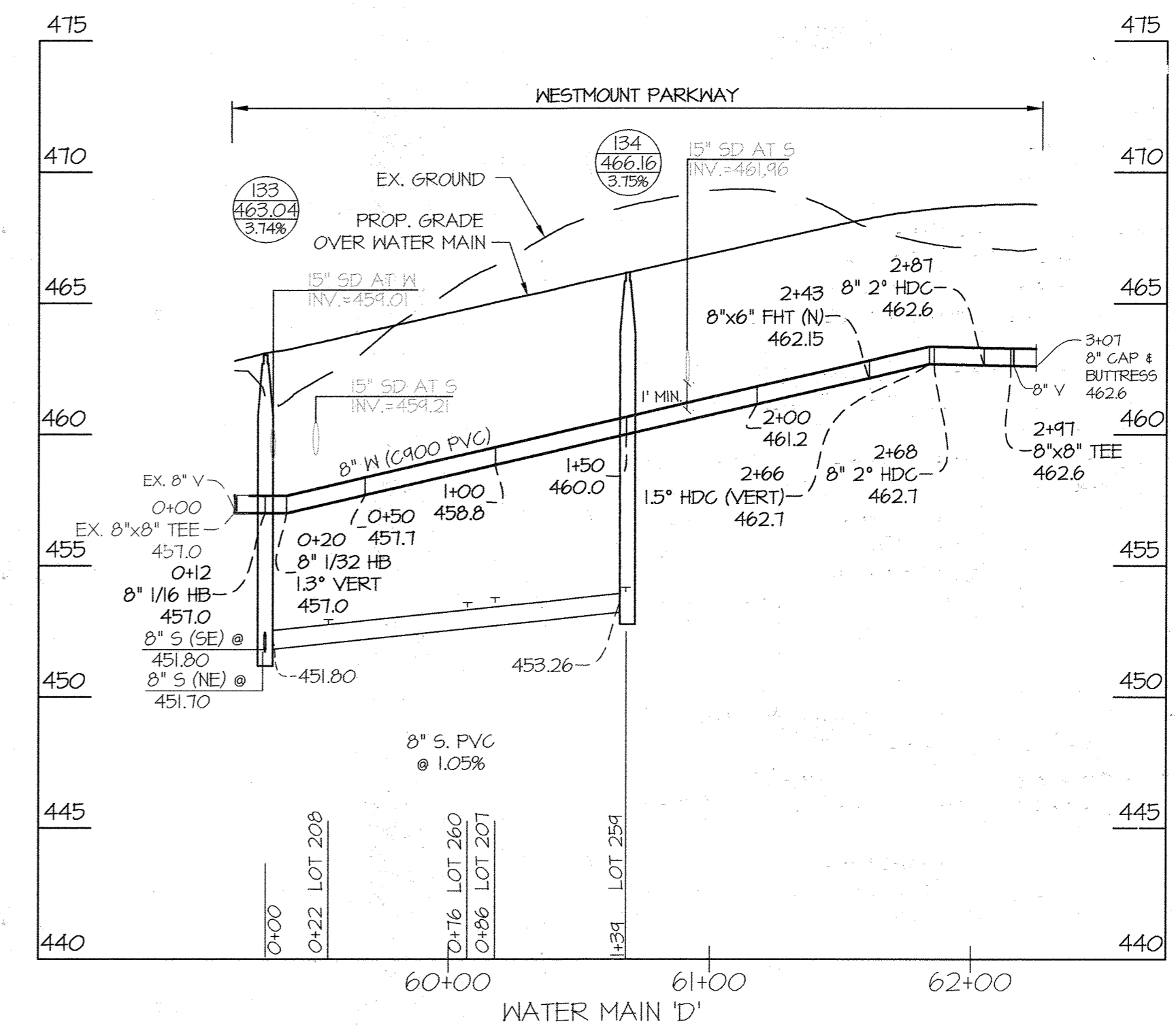
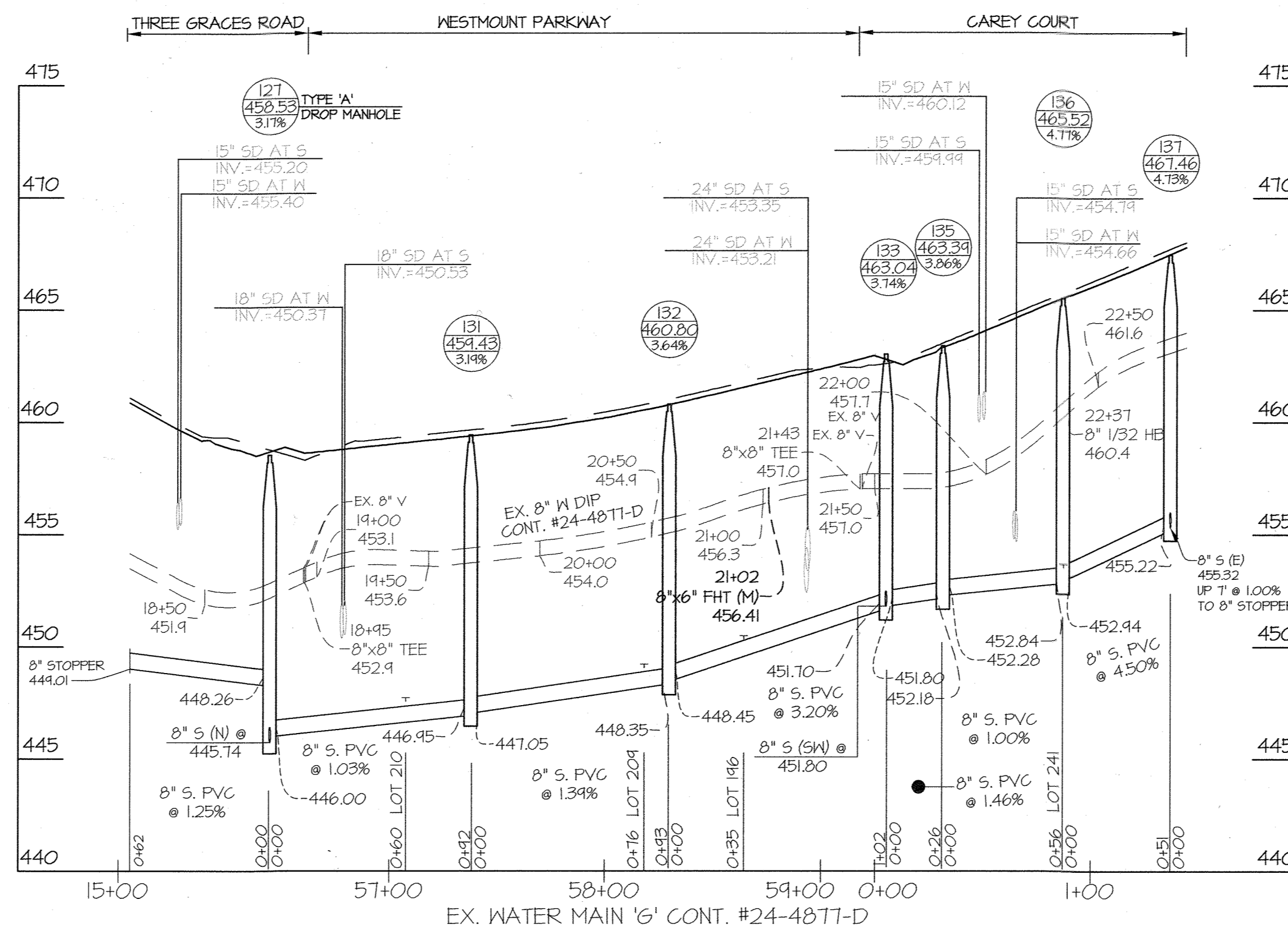
SHEET  
4 OF 6

L:\CADD\DRAWINGS\13013\PLANS BY GLW\WESTMOUNT\PHASE 3\PHASE 3A\13013-PH3A-FINALS-MS-PROFILES.dwg  
DATE: 2/17/2021 10:52:23 AM  
DRAWN BY: AWL  
CHECKED BY: DEV



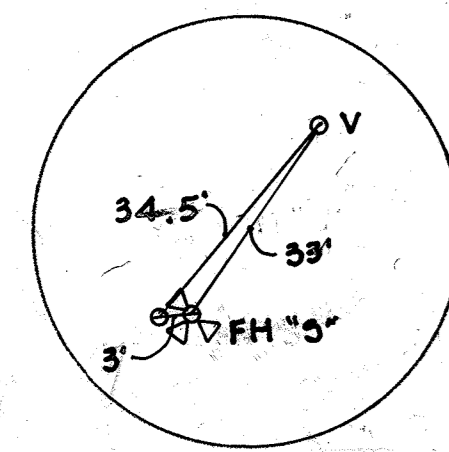
NOTES:

1. THE SYMBOL THAT REPRESENTS THE LOCATION OF A SEWER HOUSE CONNECTION IS SHOWN AT THE ELEVATION OF THE CONNECTION AT EITHER THE EDGE OF THE RIGHT-OF-WAY LINE OR EASEMENT LINE.
2. FOR SEWER HOUSE CONNECTION INVERTS AT POINTS BETWEEN THE MAIN AND FUTURE DWELLING, SEE SHEET 6.
3. FOR MINIMUM CELLAR ELEVATIONS (M.C.E.), SEE SHEET 6
4. OTHER THAN SEWER HOUSE CONNECTIONS AT MANHOLES, ALL CONNECTIONS WILL TIE INTO THE MAIN, MATCHING CENTERLINES.
5. ALL D.I.P. WATER MAINS ARE CLASS 54 UNLESS OTHERWISE NOTED.
6. ALL P.V.C. WATER MAINS ARE C900 DR-10 UNLESS OTHERWISE NOTED.
7. ALL P.V.C. SEWER MAINS ARE SDR 35 UNLESS OTHERWISE NOTED.
8. ALL D.I.P. SEWER MAINS ARE CLASS 54 UNLESS OTHERWISE NOTED. SEE PROFILES, THIS SHEET AND SHEET 4 FOR LIMITS OF D.I.P.

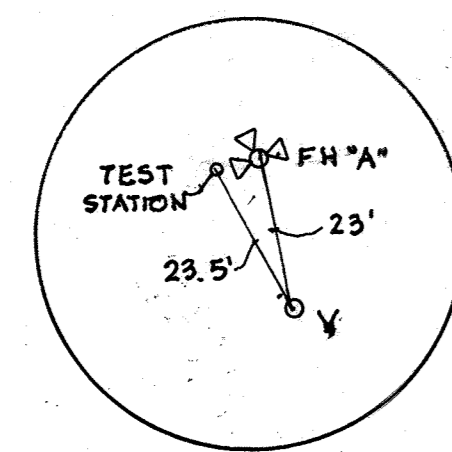


NOTE: THIS PLAN SUPERCEDES PLAN SIGNED ON 02/13/14

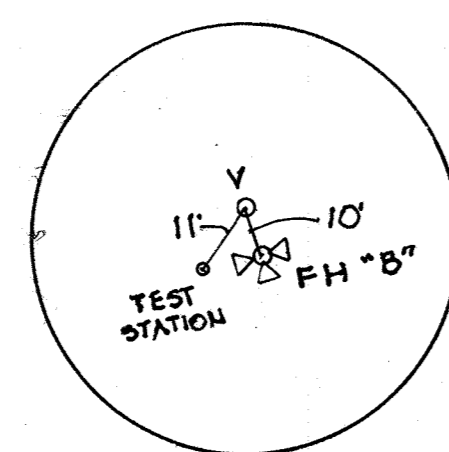
DEPARTMENT OF PUBLIC WORKS HOWARD COUNTY, MARYLAND DATE: 2/17/2021 CHIEF, BUREAU OF UTILITIES	DEPARTMENT OF PLANNING AND ZONING HOWARD COUNTY, MARYLAND DATE: 3/11/21 CHIEF, DEVELOPMENT ENGINEERING DIVISION	<b>GLW</b> PLANNING   ENGINEERING   SURVEYING 3809 NATIONAL DRIVE   SUITE 250   BURTONSVILLE, MD 20866   GLWPA.COM PHONE: 301-421-4024   BALT: 410-880-1820   DC&VA: 301-989-2524   FAX: 301-421-4188	DESIGNED BY: JRD DRAWN BY: LAG CHECKED BY: DEV	DATE: FEB., 2021 G.L.W. No. 13013	PROFESSIONAL CERTIFICATION I HEREBY CERTIFY THAT THESE PLANS WERE PREPARED OR APPROVED BY ME, AND THAT I AM A DULY LICENSED PROFESSIONAL ENGINEER UNDER THE LAWS OF THE STATE OF MARYLAND, LICENSE NO. 12975 EXP. DATE: MAY 26, 2022 2/17/21	STATE OF MARYLAND PROFESSIONAL ENGINEER	AWL ANL BY NO	CREATED PHASES 3A THRU BE FROM THIS CONTRACT. THE LIMITS OF PHASES 3B THRU BE HAVE BEEN REMOVED FROM THIS CONTRACT. CHANGED WATER MAIN MATERIAL TO PVC AS NOTED FOR 8" MAINS. REVISED TABLES AND NOTES ACCORDINGLY.	DATE: 2-3-21 4-22-20	WATER and SEWER PROFILES 600' SCALE MAP NO. 23 BLOCK NO. 6 & 12	WESTMOUNT CONTRACT No. 24-4878-D PHASE 3A LOTS 174, 175, 196, 206-220, 228, 229, 237-241, 256-260 AND OPEN SPACE LOTS 269, 273, 278-286, 289, 290 HOWARD COUNTY, MARYLAND ELECTION DISTRICT No. 2	SCALE 1"=50'(H) 1"=5'(V) SHEET 5 OF 6
			© GLW 2021									



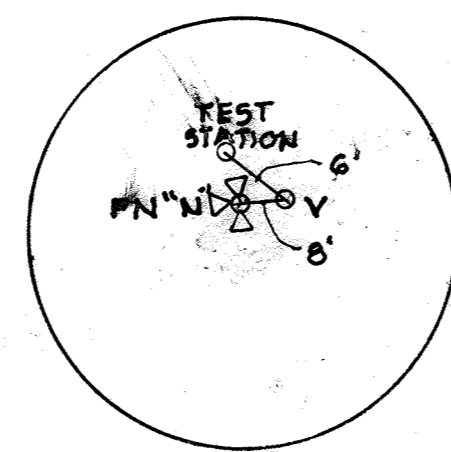
HYDRANT "S"  
STA. 16+35



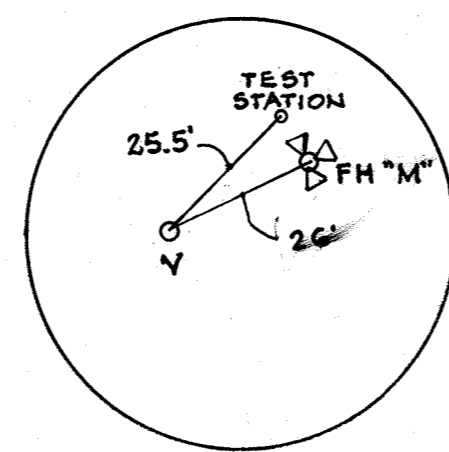
HYDRANT "A"  
STA. 22+17



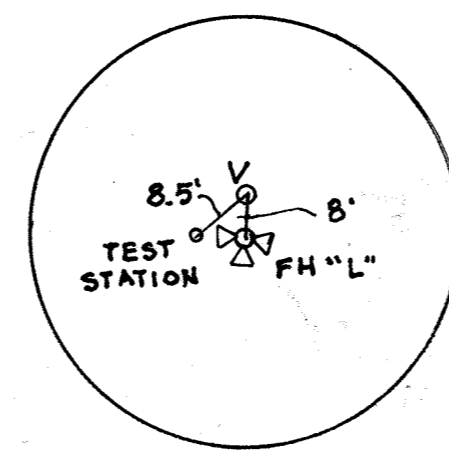
HYDRANT "B"  
STA. 24+97



HYDRANT "N"  
STA. 2+43



HYDRANT "M"  
STA. 21+02



HYDRANT "L"  
STA. 27+69

SEWER HOUSE CONNECTION INFORMATION AND MINIMUM CELLAR ELEVATIONS (M.C.E.)

LOT	SLOPE OF SHC	INV. @ MAIN/MH	INV. @ R/W SEE NOTE 1	M.C.E. SEE NOTE 2
174	2.00%	426.15	426.75	430.75
175	2.00%	424.34	424.98	424.18
196	2.00%	444.67	450.31	454.31
207	2.00%	452.85	453.61	457.71
208	1.50%	452.18	452.78	456.28
209	2.00%	448.25	444.05	452.85
210	2.00%	446.76	447.54	451.44
211	2.00%	444.53	445.35	444.15
212	2.00%	442.32	443.12	447.32
213	2.00%	438.38	434.22	443.22
214	2.00%	435.81	436.65	440.65
215	2.00%	435.71	436.55	440.25
216	2.00%	424.16	430.00	433.40
217	2.00%	421.23	428.07	431.47
218	5.00%	417.41	420.07	421.07
219	5.00%	419.30	420.20	421.45
220	2.00%	424.86	425.18	424.18
228	2.00%	434.13	434.77	438.87
229	2.00%	434.65	434.47	434.17
237	2.00%	444.53	445.05	444.05
238	2.00%	443.52	444.18	448.28
239	2.00%	442.32	442.84	446.84
240	2.00%	438.18	438.74	443.04
241	2.00%	453.17	453.51	458.01
254	2.00%	453.54	453.94	457.94
260	2.00%	452.41	453.43	457.43

NOTE:  
1. THIS VALUE IS THE INVERT OF THE S.H.C. AT EITHER THE EDGE OF THE RIGHT-OF-WAY OR EASEMENT LINE.  
2. IT WILL BE THE RESPONSIBILITY OF THE ENGINEER PREPARING THE SITE DEVELOPMENT PLAN TO ENSURE THE FINAL BASEMENT ELEVATION IS ABOVE THE MINIMUM CELLAR ELEVATION (M.C.E.) SHOWN IN THIS TABLE.

AS-BUILT INFORMATION

LOT #	ADDRESS	WATER HOUSE CONNECTION AS BUILT		SEWER HOUSE CONNECTION AS BUILT	
		LOCATION DIM. 1	LOCATION DIM. 2	LOCATION DIM. 1	LOCATION DIM. 2
174	THREE GRACES ROAD	MH 106 86'	MH 107 71'	MH 77 68'	MH 106 26'
175	THREE GRACES ROAD	MH 107 143'	MH 108 109'	MH 107 172'	MH 108 31'
196	CAREY COURT	MH 185 105'	MH 196 59'	MH 135 67'	HYDRANT "M" 21'
206	WESTMOUNT PARKWAY			(SEE CONTRACT 20-5167-D (PH. 3B))	
207	WESTMOUNT PARKWAY	MH 194 37'	HYDRANT "N" 101'	MH 134 64.5'	MH 133 94'
208	WESTMOUNT PARKWAY	MH 193 54.5'	HYDRANT "M" 103'	MH 132 123'	MH 133 47'
209	WESTMOUNT PARKWAY	MH 191 101'	MH 192 42'	MH 131 87'	MH 132 43'
210	WESTMOUNT PARKWAY	MH 127 88'	MH 131 41.5'	MH 131 54'	MH 127 73'
211	WESTMOUNT PARKWAY	MH 127 72.5'	MH 126 47'	MH 127 84.5'	MH 126 46'
212	WESTMOUNT PARKWAY	MH 125 52'	HYDRANT "L" 59'	MH 125 41'	HYDRANT "L" 80'
213	WESTMOUNT PARKWAY	HYDRANT "B" 97'	MH 125 100'	HYDRANT "B" 86'	MH 125 111'
214	WESTMOUNT PARKWAY	HYDRANT "B" 30'	MH 117 102'	HYDRANT "B" 20'	MH 117 92'
215	WESTMOUNT PARKWAY	HYDRANT "B" 45'	MH 117 49'	HYDRANT "B" 57'	MH 117 45'
216	WESTMOUNT PARKWAY	HYDRANT "A" 127'	MH 117 101'	HYDRANT "A" 116'	MH 117 113'
217	WESTMOUNT PARKWAY	HYDRANT "A" 88'	MH 107 138'	HYDRANT "A" 67'	MH 107 97'
218	WESTMOUNT PARKWAY	MH 106 79'	MH 107 47'	MH 106 68'	MH 107 57'
219	THREE GRACES ROAD	MH 107 86'	HYDRANT "A" 76'	MH 107 61'	HYDRANT "A" 54'
220	THREE GRACES ROAD	MH 107 148'	MH 108 27'	MH 107 165'	MH 108 20'
228	WALPOLE WAY	MH 118 32'	MH 117 103'	MH 118 36'	MH 117 97'
229	WALPOLE WAY	MH 118 20'	MH 117 103'	MH 118 19'	MH 117 97'
237	WESTMOUNT PARKWAY	MH 126 48'	MH 127 58'	MH 126 27'	MH 127 93'
238	WESTMOUNT PARKWAY	HYDRANT "L" 53'	MH 126 42'	HYDRANT "L" 61'	MH 126 61'
239	WESTMOUNT PARKWAY	MH 125 35'	HYDRANT "L" 85'	MH 125 28'	HYDRANT "L" 103'
240	WESTMOUNT PARKWAY	HYDRANT "B" 111'	MH 125 92'	HYDRANT "B" 91'	MH 125 115'
241	CAREY COURT	MH 135 74'	MH 136 29'	MH 135 56'	MH 136 21'
258	WESTMOUNT PARKWAY			(SEE CONTRACT 20-5167-D (PH. 3B))	
259	WESTMOUNT PARKWAY	MH 134 42'	HYDRANT "N" 72'	MH 134 23'	HYDRANT "N" 100'
260	WESTMOUNT PARKWAY	MH 134 41'	MH 193 110'	MH 134 69'	MH 133 80'

NOTE: THIS PLAN SUPERCEDES PLAN SIGNED ON 11/09/20

DEPARTMENT OF PUBLIC WORKS HOWARD COUNTY, MARYLAND  CHIEF, BUREAU OF UTILITIES DATE: 2/17/2021	DEPARTMENT OF PLANNING AND ZONING HOWARD COUNTY, MARYLAND  CHIEF, DEVELOPMENT ENGINEERING DIVISION DATE: 3/11/21	 PLANNING   ENGINEERING   SURVEYING 3809 NATIONAL DRIVE   SUITE 250   BURTONSVILLE, MD 20886   GLWPA.COM PHONE: 301-421-6241   BALTIMORE: 410-880-1820   DC&VA: 301-989-2924   FAX: 301-421-4188	DESIGNED BY: JRD DRAWN BY: LAG CHECKED BY: DEV	DATE: FEB., 2021 G.L.W. No. 13013	PROFESSIONAL CERTIFICATION I HEREBY CERTIFY THAT THESE PLANS WERE PREPARED OR APPROVED BY ME, AND THAT I AM A DULY LICENSED PROFESSIONAL ENGINEER UNDER THE LAWS OF THE STATE OF MARYLAND, LICENSE NO. 12975 EXP. DATE: MAY 26, 2022 	W.R.A.  AS BUILT 11/11/21 A.V.L.  CREATED PHASES 3A THRU 4E FROM THIS CONTRACT. THE LIMITS OF PHASES 3B THRU 3E HAVE BEEN REMOVED FROM THIS CONTRACT. 2-3-21 A.V.L.  REVISED SHEET TITLE 4-22-20 BY NO REVISION DATE	MINIMUM CELLAR ELEVATIONS AND AS-BUILT INFORMATION 600' SCALE MAP NO. 23 BLOCK NO. 6 & 12	WESTMOUNT CONTRACT No. 24-4878-D PHASE 3A LOTS 174, 175, 196, 206-220, 228, 229, 237-241, 258-260 AND OPEN SPACE LOTS 269, 273, 278-286, 289, 290 HOWARD COUNTY, MARYLAND ELECTION DISTRICT No. 2	SCALE 1"=50'(H) 1"=5'(V) SHEET 6 OF 6
--	--	---	--	--------------------------------------	--	---	--	---	---

L:\CADD\DRAWINGS\13013\PLANS BY GLW\5\FINALS\PHASE 3\PHASE 3A\13013-PH3A-FINALS-WS-PROFILES.dwg  
 2/17/2021 10:58:10 AM  
 13013-PH3A-FINALS-WS-PROFILES.dwg