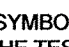


**GENERAL NOTES**

**I. STANDARD GENERAL NOTES**

- APPROXIMATE LOCATIONS OF EXISTING MAINS ARE SHOWN. THE CONTRACTOR SHALL TAKE ALL NECESSARY PRECAUTIONS TO PROTECT EXISTING MAINS AND SERVICES AND MAINTAIN UNINTERRUPTED SERVICE. ANY DAMAGE INCURRED SHALL BE REPAIRED IMMEDIATELY TO THE SATISFACTION OF THE ENGINEER AT THE CONTRACTOR'S EXPENSE.
- TOPOGRAPHIC FIELD SURVEYS WERE PERFORMED AUGUST 2006 BY SILL, ADCOCK & ASSOCIATES, LLC.
- THE COORDINATES ON THE DRAWINGS ARE BASED ON THE MARYLAND STATE REFERENCE SYSTEM NAD '83/91' AS PROJECTED BY HOWARD COUNTY GEODETIC CONTROL STATIONS NO. 1618 AND NO. 17A8.
- ALL VERTICAL CONTROLS ARE BASED ON NAVD '88. VERTICAL CONTROLS PROVIDED ON THE DRAWINGS ARE CONCRETE MONUMENTS.
- ALL PIPE ELEVATIONS SHOWN ARE INVERT ELEVATIONS UNLESS OTHERWISE NOTED ON THE PLANS. CLEAR ALL UTILITIES BY A MINIMUM OF 12 INCHES. CLEAR ALL POLES BY 5'-0" MINIMUM OR TUNNEL AS REQUIRED UNLESS OTHERWISE NOTED. THE OWNER HAS CONTACTED THE UTILITY COMPANIES AND HAS MADE ARRANGEMENTS FOR BRACING OF POLES AS SHOWN ON THE DRAWINGS. IN THE EVENT THE CONTRACTOR'S WORK REQUIRES THE BRACING OF ADDITIONAL POLES, ANY COST INCURRED BY THE BRACING OF ADDITIONAL POLES OR DAMAGES SHALL BE DEDUCTED FROM MONIES OWED BY THE CONTRACTOR. THE CONTRACTOR SHALL COORDINATE WITH THE UTILITY COMPANIES TO SCHEDULE THE BRACING OF THE POLES.
- FOR DETAILS NOT SHOWN ON THE DRAWING, AND FOR MATERIALS AND CONSTRUCTION METHODS, USE HOWARD COUNTY DESIGN MANUAL, VOLUME IV, STANDARD SPECIFICATIONS AND DETAILS FOR CONSTRUCTION (LATEST EDITION). THE CONTRACTOR SHALL HAVE A COPY OF VOLUME IV ON THE JOB.
- WHERE TEST PITS HAVE BEEN MADE ON EXISTING UTILITIES, THEY ARE NOTED BY THE SYMBOL  AT THE LOCATIONS OF THE TEST PITS. A NOTE OR NOTES CONTAINING THE RESULTS OF THE TEST PIT OR PITS IS INCLUDED ON THE DRAWINGS. EXISTING UTILITIES IN THE VICINITY OF THE PROPOSED WORK FOR WHICH TEST PITS HAVE NOT BEEN DUG SHALL BE LOCATED BY THE CONTRACTOR TWO WEEKS IN ADVANCE OF CONSTRUCTION OPERATIONS AT HIS OWN EXPENSE.
- THE CONTRACTOR SHALL NOTIFY THE FOLLOWING UTILITY COMPANIES OR AGENCIES AT LEAST FIVE WORKING DAYS BEFORE STARTING WORK SHOWN ON PLANS:  
 A & T 800-252-1133  
 BGE (CONSTRUCTION SERVICES) 410-537-8713  
 BGE (EMERGENCY) 410-685-0123  
 BUREAU OF UTILITIES 410-313-4900  
 COLONIAL PIPELINE COMPANY 410-795-1390  
 MISS UTILITY 800-257-7777  
 STATE HIGHWAY ADMINISTRATION 410-531-5533  
 VERIZON 800-743-0033
- TREES AND SHRUBS ARE TO BE PROTECTED FROM DAMAGE TO THE MAXIMUM EXTENT. TREES AND SHRUBS LOCATED WITHIN THE CONSTRUCTION STRIP ARE NOT TO BE REMOVED OR DAMAGED BY THE CONTRACTOR.
- THE CONTRACTOR SHALL REMOVE TREES, STUMPS, AND ROOTS ALONG THE LINE OF EXCAVATION. PAYMENT FOR SUCH REMOVAL SHALL BE INCLUDED IN THE UNIT PRICE BID FOR CONSTRUCTION OF THE MAIN.
- THE CONTRACTOR SHALL NOTIFY THE BUREAU OF HIGHWAYS, HOWARD COUNTY, AT (410)313-7450 AT LEAST 5 WORKING DAYS BEFORE OPEN CUTTING OR BORING/JACKING OF ANY COUNTY ROAD FOR LAYING WATER/SEWER MAINS OR HOUSE CONNECTIONS. THE APPROVAL OF THESE DRAWINGS WILL CONSTITUTE COMPLIANCE WITH DPW REQUIREMENTS PER SECTION 18.114(a) OF THE HOWARD COUNTY CODE.

**STANDARD SEWER MAIN GENERAL NOTES**

**STANDARD SEWER MAIN GENERAL NOTES**

- ALL SEWER MAINS SHALL BE DIP OR P.V.C. UNLESS OTHERWISE NOTED.
- ALL MANHOLES SHALL BE 4'-0" INSIDE DIAMETER UNLESS OTHERWISE NOTED.
- FORCE MAINS SHALL BE DIP ONLY.
- MANHOLES SHOWN WITH 12" AND 16" WALLS ARE FOR BRICK MANHOLES ONLY.
- MANHOLES DESIGNATED W.T. IN PLAN AND PROFILE SHALL HAVE WATERTIGHT FRAME AND COVERS. STANDARD DETAIL G5.52 WHERE WATERTIGHT FRAME AND COVER IS USED, SET TOP OF FRAME 1'-6" ABOVE FINISHED GRADE UNLESS OTHERWISE NOTED ON DRAWINGS.
- HOUSE(S) WITH THE SYMBOL "C.N.S." INDICATES THAT CELLAR CANNOT BE REPAID.

**STANDARD WATER MAIN GENERAL NOTES**

**STANDARD WATER MAIN GENERAL NOTES**

- ALL WATER MAINS TO BE D.I.P. CLASS 54 UNLESS OTHERWISE NOTED.
- TOPS OF ALL WATER MAINS TO HAVE A MINIMUM OF 3'-6" OF COVER UNLESS OTHERWISE NOTED.
- VALVES ADJACENT TO TEES SHALL BE STRAPPED TO TEES.
- ALL FITTING SHALL BE SWEESSED OR ANCHORED WITH CONCRETE IN ACCORDANCE WITH THE STANDARD DETAILS UNLESS OTHERWISE PROVIDED FOR ON THE DRAWINGS.
- FIRE HYDRANTS SHALL BE SET TO THE BURY LINE ELEVATIONS SHOWN ON THE DRAWINGS. ALL FIRE HYDRANTS SHALL BE RESTRAINED AND BUTTRESSED WITH CONCRETE IN ACCORDANCE WITH THE STANDARD DETAIL S. THE SOIL AROUND THE FIRE HYDRANT SHALL BE COMPACTED IN ACCORDANCE WITH SECTION 1000 AND 1005 OF THE STANDARD SPECIFICATIONS.
- THE CONTRACTOR SHALL NOT OPERATE ANY WATER MAIN VALVES ON THE EXISTING WATER SYSTEM.
- TRACER WIRE AND CONTINUITY TEST STATIONS SHALL BE INSTALLED ON ALL DIP AND PVC WATER MAINS IN ACCORDANCE WITH THE HOWARD COUNTY DESIGN MANUAL.
- FOR PVC WATER MAINS, ALL RECORDS FOR THE QUALITY CONTROL AND QUALIFICATIONS TEST REQUIREMENTS NOTED IN SECTION 5.1 OF THE AWWA STANDARD C900 FOR PVC PRESSURE PIPES SHALL BE SUBMITTED WITH THE PIPE MATERIAL, CERTIFICATIONS OR SHOP DRAWINGS PRIOR TO APPROVAL OF THE MATERIAL FOR USE. THE TEST RECORDS SHALL BE FOR THE PIPE TO BE INSTALLED UNDER THIS CONTRACT. ALL PVC PIPE SHALL CONTAIN MARKINGS TO ALLOW CROSS REFERENCING OF THE PIPE SUPPLIED TO THE TEST RECORDS RECEIVED.
- UNLESS OTHERWISE NOTED ON THE PLANS OR IN THE SPECIFICATIONS, SACRIFICIAL ANODES SHALL BE INSTALLED ON ALL VALVES AND METALLIC FITTINGS USED WITH PVC WATER MAINS IN ACCORDANCE WITH VOLUME IV STANDARD SPECIFICATIONS AND DETAILS FOR CONSTRUCTION. 17 POUND MAGNESIUM ANODES SHALL BE INSTALLED ON ALL VALVES AND DUCTILE IRON FITTING INCLUDING RESTRAINTS AND HARNESSSES. 12 POUND ZINC ANODES SHALL BE INSTALLED ON ALL STAINLESS STEEL FITTINGS AND SADDLES USED WITH PVC MAINS. ALL "TEES" USED WITH PVC MAINS SHALL BE DUCTILE IRON.
- PROPER ASSEMBLY OF GASKETED PVC PIPE JOINTS: THE MANUFACTURER'S INSERTION LINE OF GASKETED PVC PIPE JOINTS INDICATES THE MAXIMUM DEPTH OF INSERTION OF THE SPIGOT INTO THE BELL. AFTER ASSEMBLY OF THE JOINT, THE INSERTION LINE SHALL REMAIN VISIBLE. DUAL INSERTION LINES ON GASKETED PVC PIPE INDICATE THE MAXIMUM AND MINIMUM DEPTH OF INSERTION OF THE SPIGOT INTO THE BELL. THE CONTRACTOR SHALL NOT OVER INSERT OR OVER HOME THE SPIGOT INTO THE BELL OF THE PVC PIPE.
- ALL CHANGES IN HORIZONTAL OR VERTICAL DIRECTION OF PVC WATER PIPE SHALL BE MADE WITH STANDARD BENDS, 5-DEGREE SWEEPS OR HIGH DEFLECTION (HD) COUPLINGS. NO BENDING OF THE PIPE OR DEFLECTING OF PVC PIPE JOINTS IS PERMITTED. WHERE HIGH DEFLECTION COUPLINGS OR 5-DEGREE SWEEPS ARE PERMITTED, THE CONTRACTOR SHALL PROVIDE ONE FULL PIPE LENGTH (20-FOOT LONG) ON EITHER SIDE OF THE HIGH DEFLECTION COUPLING OR 5-DEGREE SWEEP. THE CONTRACTOR SHALL USE A VIBRATORY PLATE COMPACTOR OR OTHER APPROVED MEANS TO THOROUGHLY COMPACT THE #57 STONE ON BOTH SIDES OF THE HIGH DEFLECTION COUPLING OR 5-DEGREE SWEEP, TAKING CARE NOT TO USE COMPACTION EQUIPMENT DIRECTLY OVER THE FITTING. PVC HIGH DEFLECTION COUPLINGS SHALL BE LIMITED TO A TOTAL DEFLECTION OF 3-DEGREES (1-1/2 DEGREE ON EITHER END OF THE COUPLING), SHALL BE RATED FOR A MINIMUM 200 PSI MEETING THE REQUIREMENTS OF AWWA C900, SHALL HAVE A MINIMUM LENGTH OF 9 INCHES AND SHALL HAVE CENTER STOPS. PVC HIGH DEFLECTION COUPLINGS SHALL BE CERTAINTIED PVC HIGH DEFLECTION (HD) STOP COUPLINGS OR EQUAL.
- WHEN PVC HIGH DEFLECTION COUPLINGS OR PVC 5-DEGREE SWEEPS ARE USED TO FACILITATE CHANGES IN HORIZONTAL OR VERTICAL ALIGNMENTS OF AWWA C-900 PVC PIPELINES, THE CONTRACTOR SHALL INSTALL DEVICES FOR THE PREVENTION OF OVER-INSERTION OF THE PVC PIPE SPIGOTS OR PLAIN ENDS INTO THE PUSH ON BELL JOINT ON BOTH SIDES OF THE HIGH DEFLECTION COUPLINGS AND 5-DEGREE SWEEPS. BELL STOPS SHALL BE PLACED AT THE PROPER INSERTION LINE FOR THE FITTING. THE BELL STOP SHALL BE MANUFACTURED OF DUCTILE IRON AND INCORPORATES AN EXPANSION RETENTION SPRING TO ALLOW FOR PIPE EXPANSION AND CONTRACTION. THE BELLS STOPS SHALL BE SERIES 5000 MEGA-STOP AS MANUFACTURED BY EBAA IRON, INC., OR APPROVED EQUAL.

SEDIMENT CONTROL MEASURES WILL BE IMPLEMENTED IN ACCORDANCE WITH SECTION 308 OF THE STANDARD SPECIFICATIONS AND WITH ROAD CONSTRUCTION PLANS F-17-008

THIS DEVELOPMENT IS APPROVED FOR SOIL EROSION AND SEDIMENT CONTROL. THE DISTRICT SOIL CONSERVATION DISTRICT DATE 5/31/17


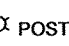


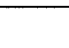

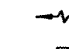
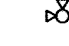
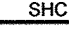




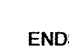




**PUBLIC WATER AND SEWER PLAN**

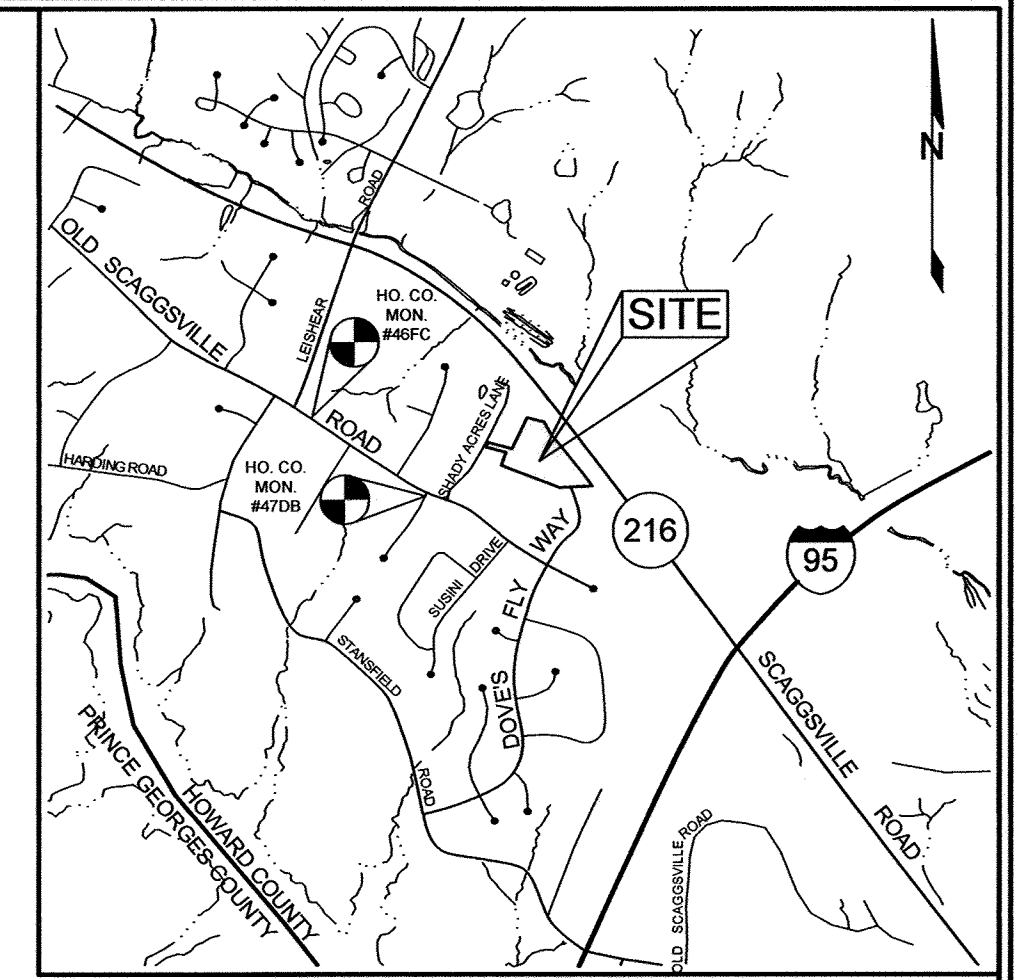
**DOVES FLY**

LOTS 1 THRU 7 AND  
LOTS 9 TO 17 AND  
OPEN SPACES  
LOTS 8, 18 AND 19

**CONTRACT NO. #24-4874-D**

**LEGEND**

- SIGN 
- LIGHT POLE 
- STREAM BANK BUFFER 
- WETLANDS BUFFER 
- WETLANDS 
- DIRECTION OF FLOW 
- PROPOSED FIRE HYDRANT 
- PROPOSED HOUSE CONNECTIONS 
- PROPOSED SEWER MANHOLES 
- PROPOSED WATER TEE AND VALVE 
- PROPOSED WATER HORIZONTAL BEND 
- STORM DRAIN STRUCTURES 
- STORM DRAIN PIPES 
- PROPOSED AIR RELEASE MANHOLE 
- EXISTING WATER METER 
- EXISTING CABLE METER 
- EXISTING GAS METER 
- EXISTING ELECTRIC TRANSFORMER 



VICINITY MAP  
SCALE: 1"=2000'

**BENCHMARKS**

NUMBER	NORTHING	EASTING	ELEVATION	DESCRIPTION
46FC	535145.93	1346954.79	403.70	20.5' SE OF G&E POLE #840720, 175' SE OF E OF MAC DRIVE
47DB	534316.90	1348131.23	398.49	3' SW OF END OF CURB ON FELSVIEW DR., 2,603.7' SE FROM E OF FELSHEAR RD.

**WELL AND SEPTIC CHART**

PARCEL NO.	ADDRESS	OWNER	ABANDON WELL	ABANDON SEPTIC
126	8600 DOVES FLY WAY	WILLIAMSBURG GROUP, LLC	YES	N/A

**QUANTITIES**

ITEMS	QUANTITIES		AS-BUILT	
	ESTIMATED	QUANTITIES	TYPE	MANUFACTURER/SUPPLIER
8" PVC C-900 DR18 CL 235 (WATER)	4350 LF	4350 LF	C-900 DR18	S.M. BAGLE
8" PVC C-900 DR18 CL 235 (WATER)	585 LF	585 LF	C-900 DR18	S.M. BAGLE
1.5" WHC	214 LF	214 LF	K COPPER	CAMBRIDGE-LEE IND. LLC
1.5" TWHC	103.2 LF	103.2 LF	K COPPER	CAMBRIDGE-LEE IND. LLC
8" X 6" REDUCER	2 EA	2 EA	DIP EPOXY	TYLER UNION
8"x8" TEE	1 EA	1 EA	DIP EPOXY	TYLER UNION
8" VALVE (2) 6" (2) FHV	3 EA	3 EA	DIP EPOXY	AMERICAN PIPE CONTROL
6" FIRE HYDRANT	2 EA	2 EA	DIP EPOXY	TYLER UNION
1/32 HB	7 EA	1 EA	DIP EPOXY	TYLER UNION
1/8 HB	1 EA	1 EA	DIP EPOXY	TYLER UNION
1/8 VB	6 EA	1 EA	DIP EPOXY	TYLER UNION
1" HDC	1 EA	0		
6" CAP & BUTTRESS	2 EA	2 EA	DIP EPOXY	TYLER UNION
8" PVC SDR 35 (SEWER)	1060 LF	1131.0 LF	SDR 35 PVC	NORTH AMERICAN PIPE
8" DIP CLASS 150 (SEWER)	71 LF	0		
4" DHC	110.85 LF	110.0 LF	SDR 35 PVC	NORTH AMERICAN PIPE
4" SHC	241.55 LF	242.0 LF	SDR 35 PVC	NORTH AMERICAN PIPE
DROP MH (SEWER)	2 EA	2 EA	CONCRETE	CONTRACTORS PRECAST CON
SEWER MANHOLE	7 EA	7 EA	CONCRETE	CONTRACTORS PRECAST CON

**SHEET INDEX**

SHEET NO.	DESCRIPTION
1	COVER SHEET
2	FINAL PUBLIC WATER AND SEWER PLAN
3	FINAL PUBLIC SEWER PROFILES
4	FINAL PUBLIC WATER PROFILES

**OWNER/DEVELOPER**

WILLIAMSBURG GROUP  
5485 HARPERS FARM ROAD, SUITE 200  
COLUMBIA, MARYLAND 21044  
410.997.8800

**DOVES FLY**

LOTS 1 THRU 7 AND LOTS 9 TO 17 AND  
OPEN SPACE LOTS 8, 18 AND 19

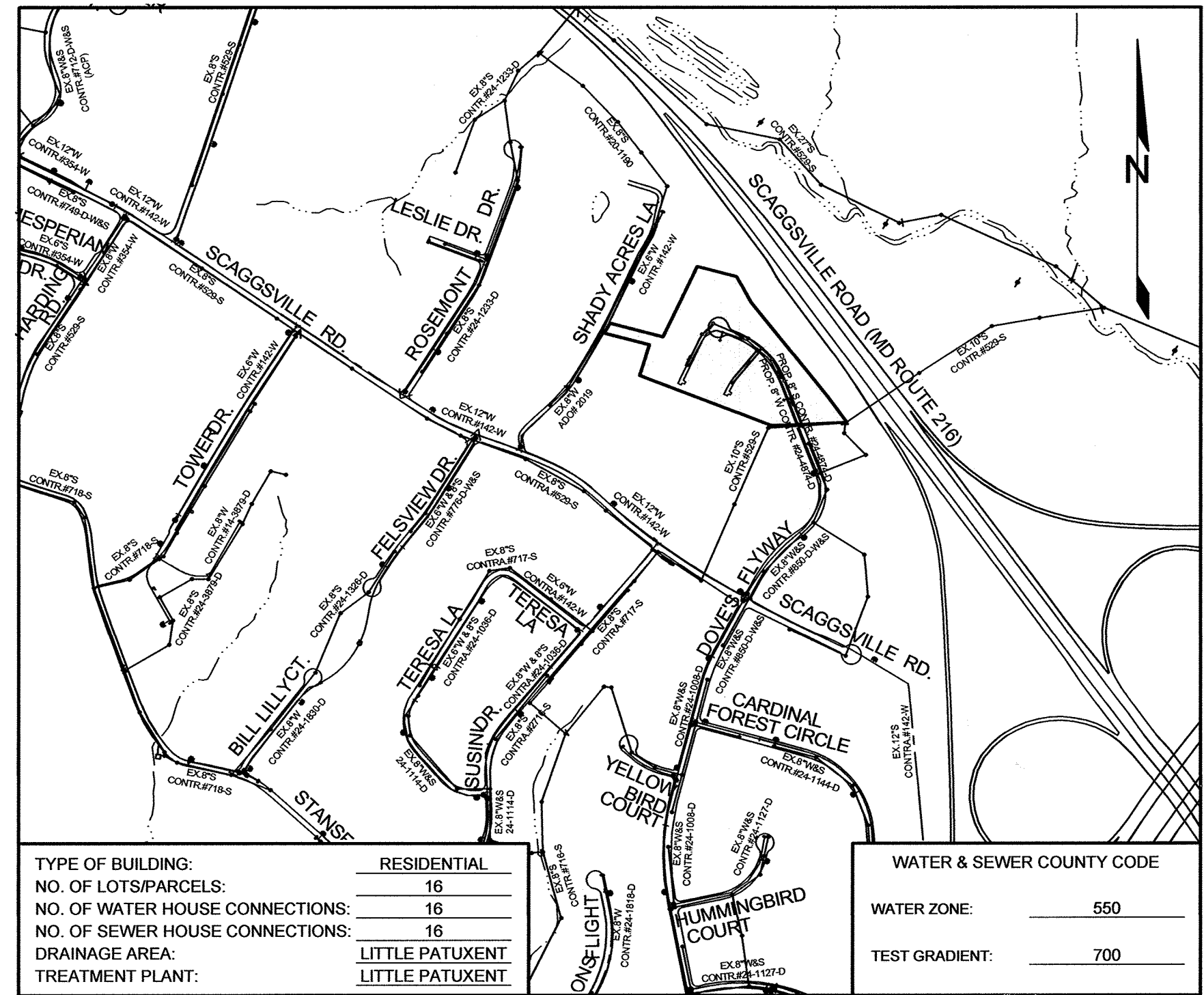
TAX MAP 47 GRID 7  
6TH ELECTION DISTRICT  
PARCEL 126  
HOWARD COUNTY, MARYLAND

**CONTRACT NO. 24-4874-D**

SCALE:  
AS  
SHOWN

SHEET NO.

1 OF 4



LOCATION PLAN  
SCALE: 1"=600'

TYPE OF BUILDING:	RESIDENTIAL	WATER & SEWER COUNTY CODE
NO. OF LOTS/PARCELS:	16	WATER ZONE: 550
NO. OF WATER HOUSE CONNECTIONS:	16	TEST GRADIENT: 700
NO. OF SEWER HOUSE CONNECTIONS:	16	
DRAINAGE AREA:	LITTLE PATUXENT	
TREATMENT PLANT:	LITTLE PATUXENT	

F-17-008

DEPARTMENT OF PUBLIC WORKS  
HOWARD COUNTY, MARYLAND

DEPARTMENT OF PLANNING AND ZONING  
HOWARD COUNTY, MARYLAND

6-13-17

SILL ENGINEERING GROUP, LLC

11130 Dovedale Court, Suite 200  
Marriottsville, Maryland 21104  
Phone: 443.325.5976  
Fax: 410.696.2022  
Email: info@sillengineering.com  
Civil Engineering for Land Development

STATE OF MARYLAND  
PROFESSIONAL ENGINEER  
NO. 32095

DESIGNED BY: PS

DRAWN BY: RA

CHECKED BY: PS

DATE: MAY 3, 2017

NO. 1

AS BUILT

DESCRIPTION

DATE 6/20/18

REVISIONS

COVER SHEET

600' SCALE MAP NO. 47

BLOCK NO. 7

SCALE: AS SHOWN

SHEET NO. 1 OF 4

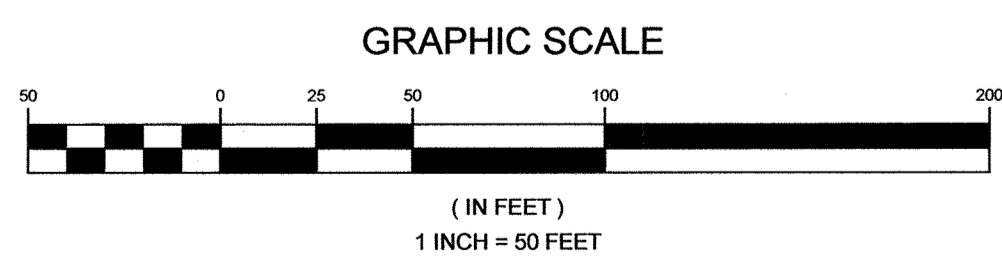
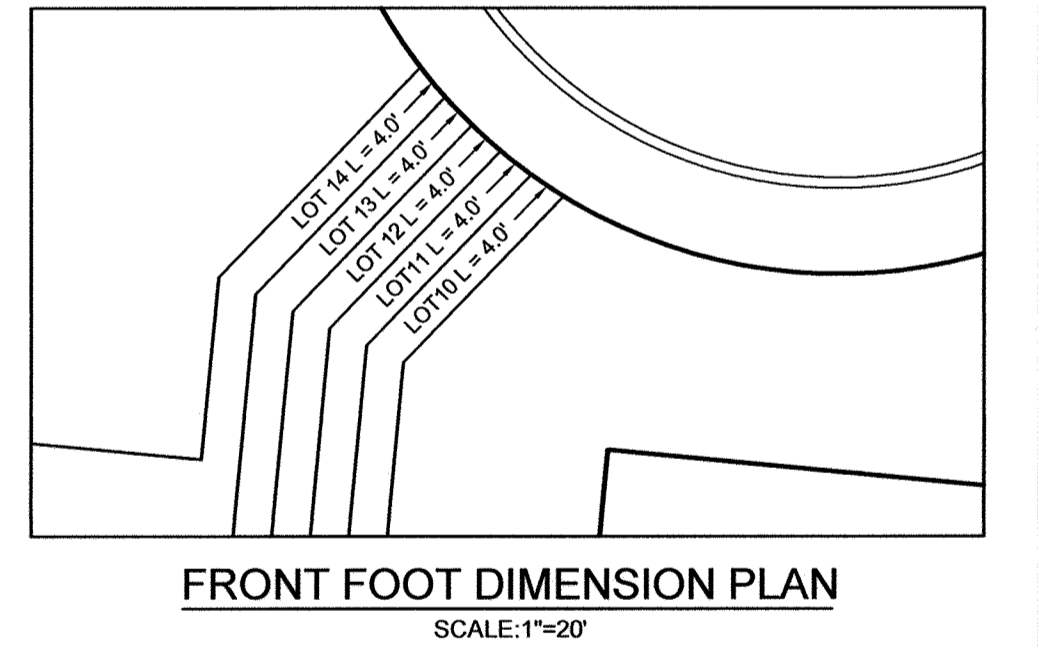
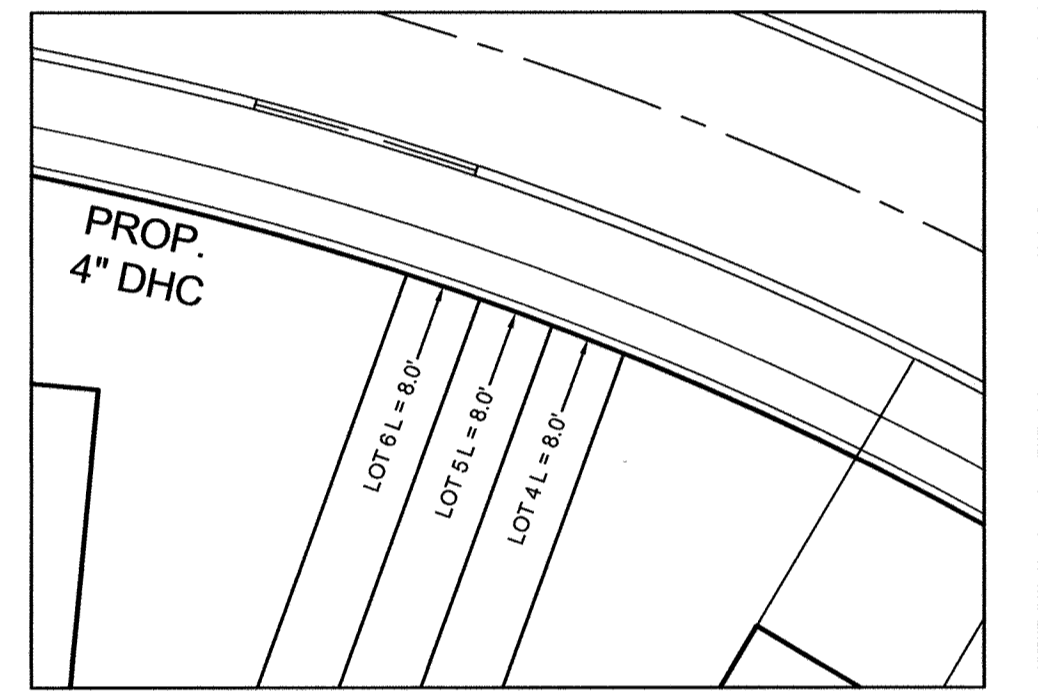
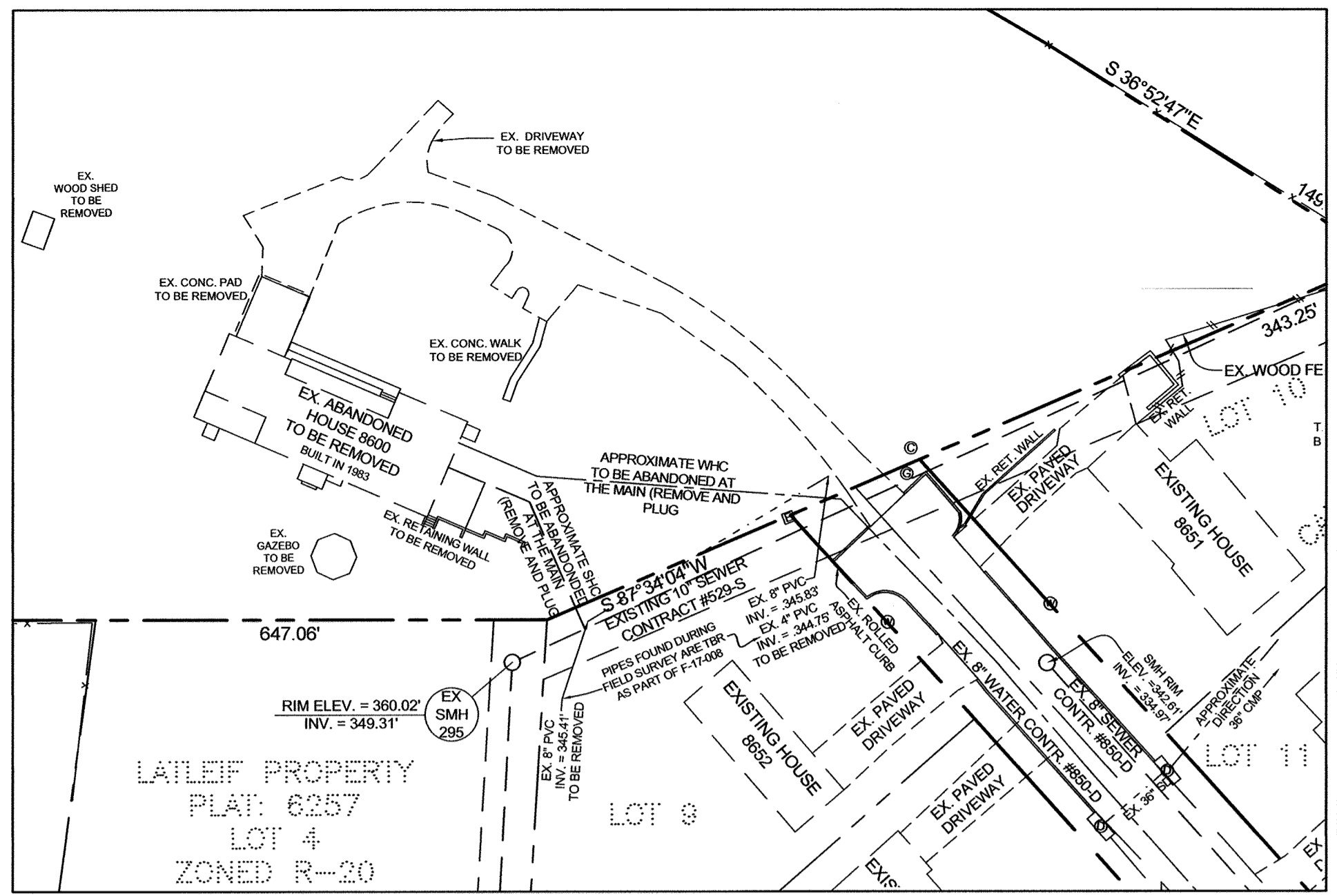
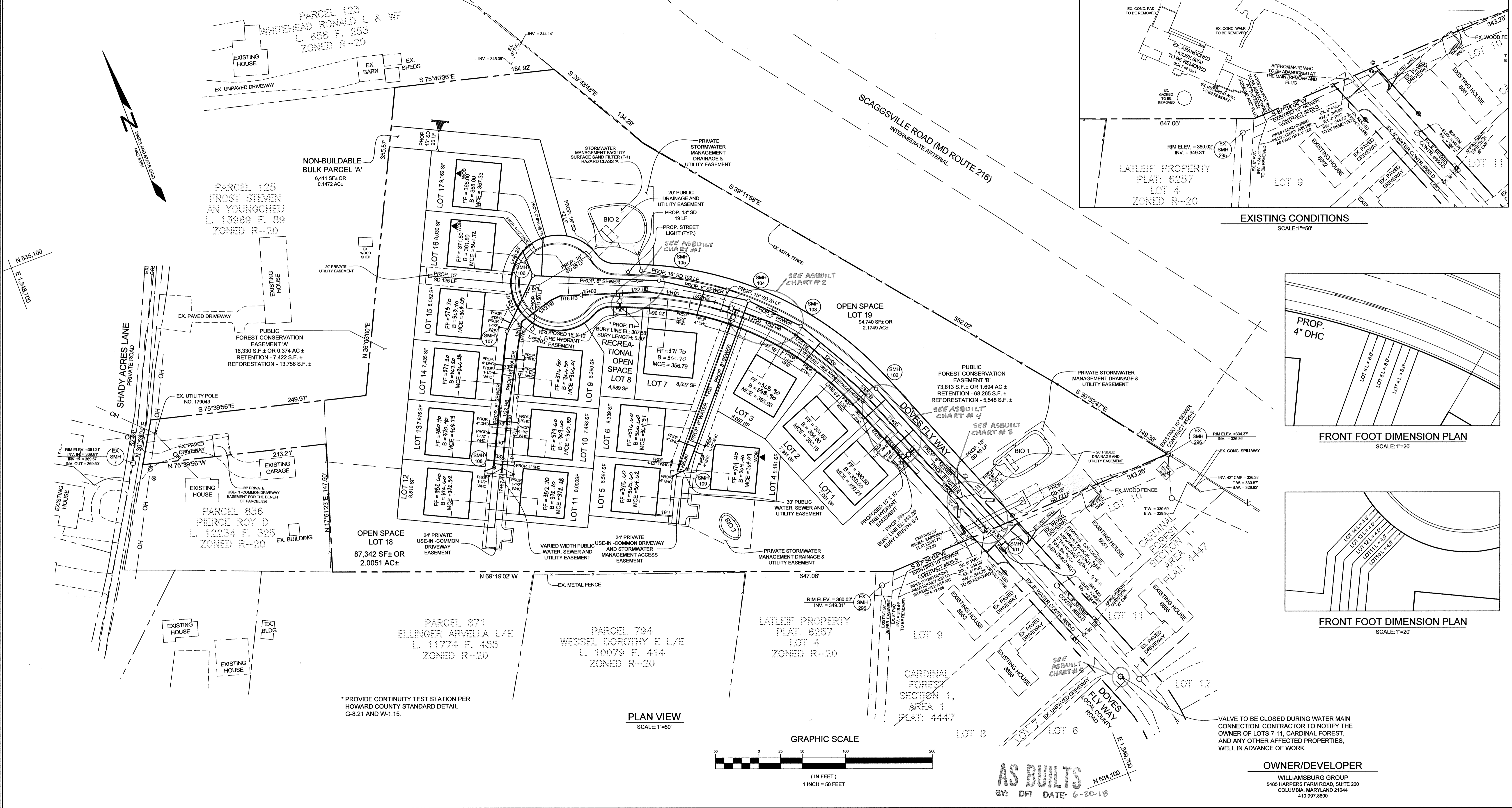
ASBUILT CHART 1: F.H. AT STA. 14+00		
ITEM	TO	DISTANCE
F.H.	F.H. VALVE	15.3'
F.H.	TEST STATION	2.5'
F.H.	SMH 105	55.0'
F.H. VALVE	TEST STATION	16.3'
F.H. VALVE	SMH 105	48.3'

ASBUILT CHART 2: 8" VALVE AT STA. 13+25		
ITEM	TO	DISTANCE
8" VALVE	SMH 104	21.0'
8" VALVE	SMH 103	80.5'
8" VALVE	SMH 104	27.0'
8" VALVE	SMH 103	79.0'
8" VALVE	8" VALVE	9.2'

ASBUILT CHART 3: 8" VALVE AT STA. 9+30		
ITEM	TO	DISTANCE
8" VALVE	SMH 101	17.0'
8" VALVE	I-1 E	47.5'
8" VALVE	I-2 E	53.5'

ASBUILT CHART 4: F.H. AT STA. 10+00		
ITEM	TO	DISTANCE
F.H.	SMH 102	88.0'
F.H.	F.H. VALVE	17.5'
F.H.	TEST STATION	2.4'
F.H. VALVE	SMH 102	83.0'

ASBUILT CHART 5:		
NOTE: NO MAIN LINE VALVE		
NOTE: FIRE HYDRANT WITH FIRE HYDRANT VALVE 6"		



DEPARTMENT OF PUBLIC WORKS  
HOWARD COUNTY, MARYLAND

CHIEF, BUREAU OF UTILITIES

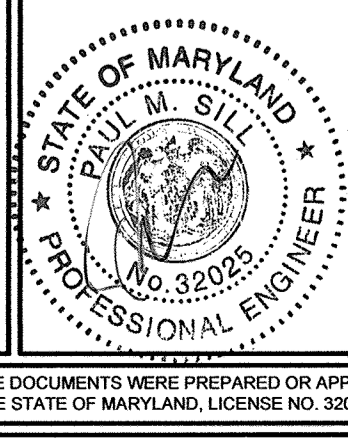
DEPARTMENT OF PLANNING AND ZONING  
HOWARD COUNTY, MARYLAND

CHIEF, DEVELOPMENT ENGINEERING DIVISION

6.13.17

**SILL ENGINEERING GROUP, LLC**

11130 Dovedale Court, Suite 200  
Marriottsville, Maryland 21104  
Phone: 410.325.5076  
Fax: 410.696.2022  
Email: info@sillengineering.com  
Civil Engineering for Land Development



DESIGNED BY: PS  
DRAWN BY: RA  
CHECKED BY: PS  
DATE: MAY 3, 2017

NO.	DESCRIPTION	DATE
1	ASBUILT BENCHMARK REMOVAL & CONC. THROUGH BLOCK ADDITION	10/16/2017

**AS BUILTS**  
BY: DFI DATE: 6-20-18

FINAL PUBLIC WATER AND SEWER PLAN

600' SCALE MAP NO. 47 BLOCK NO. 7

**OWNER/DEVELOPER**  
WILLIAMSBURG GROUP  
5485 HARPERS FARM ROAD, SUITE 200  
COLUMBIA, MARYLAND 21044  
410.997.8800

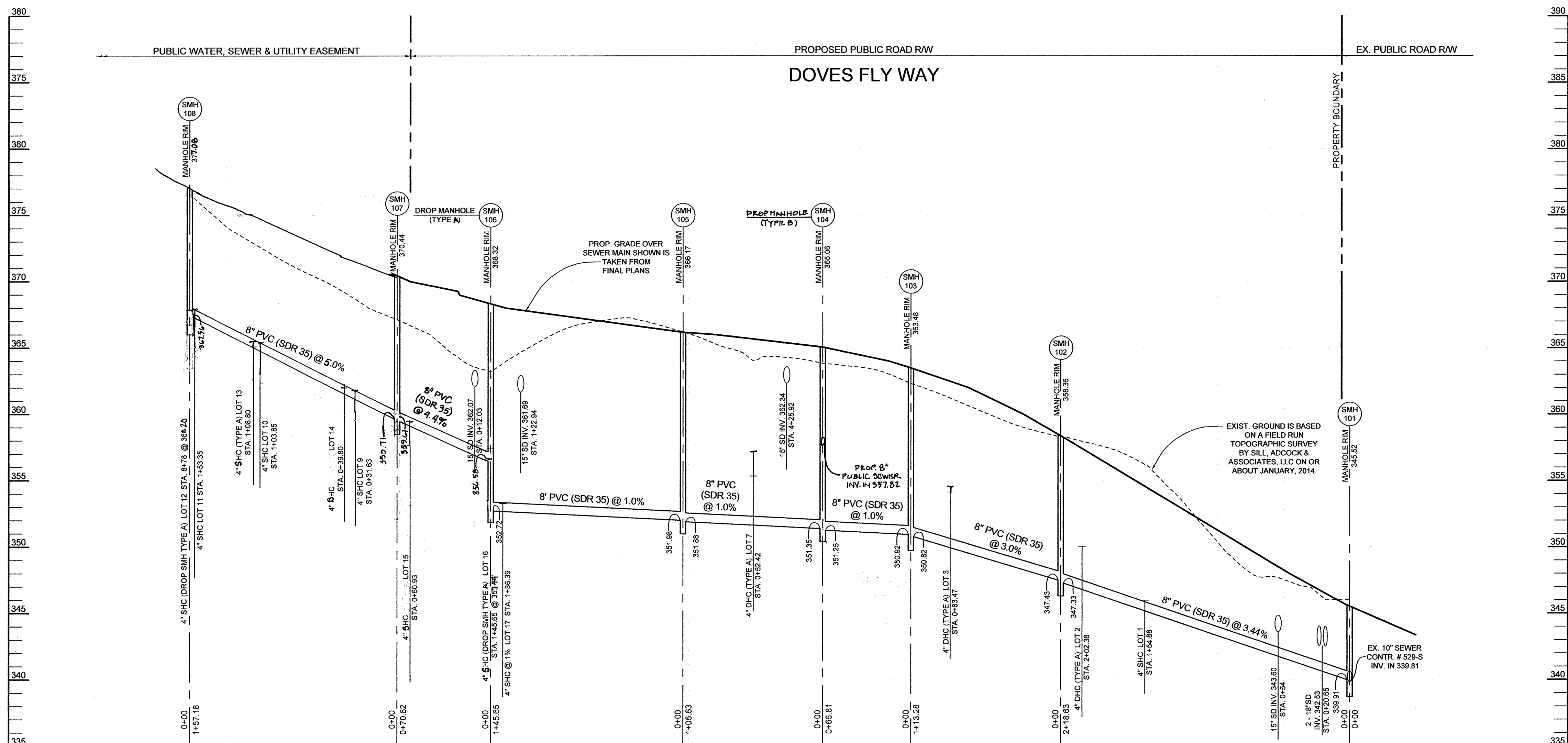
**DOVES FLY**  
LOTS 1 THRU 7 AND LOTS 9 TO 17 AND  
OPEN SPACE LOTS 8, 18 AND 19

TAX MAP 47 GRID 7 PARCEL 126  
6TH ELECTION DISTRICT HOWARD COUNTY, MARYLAND

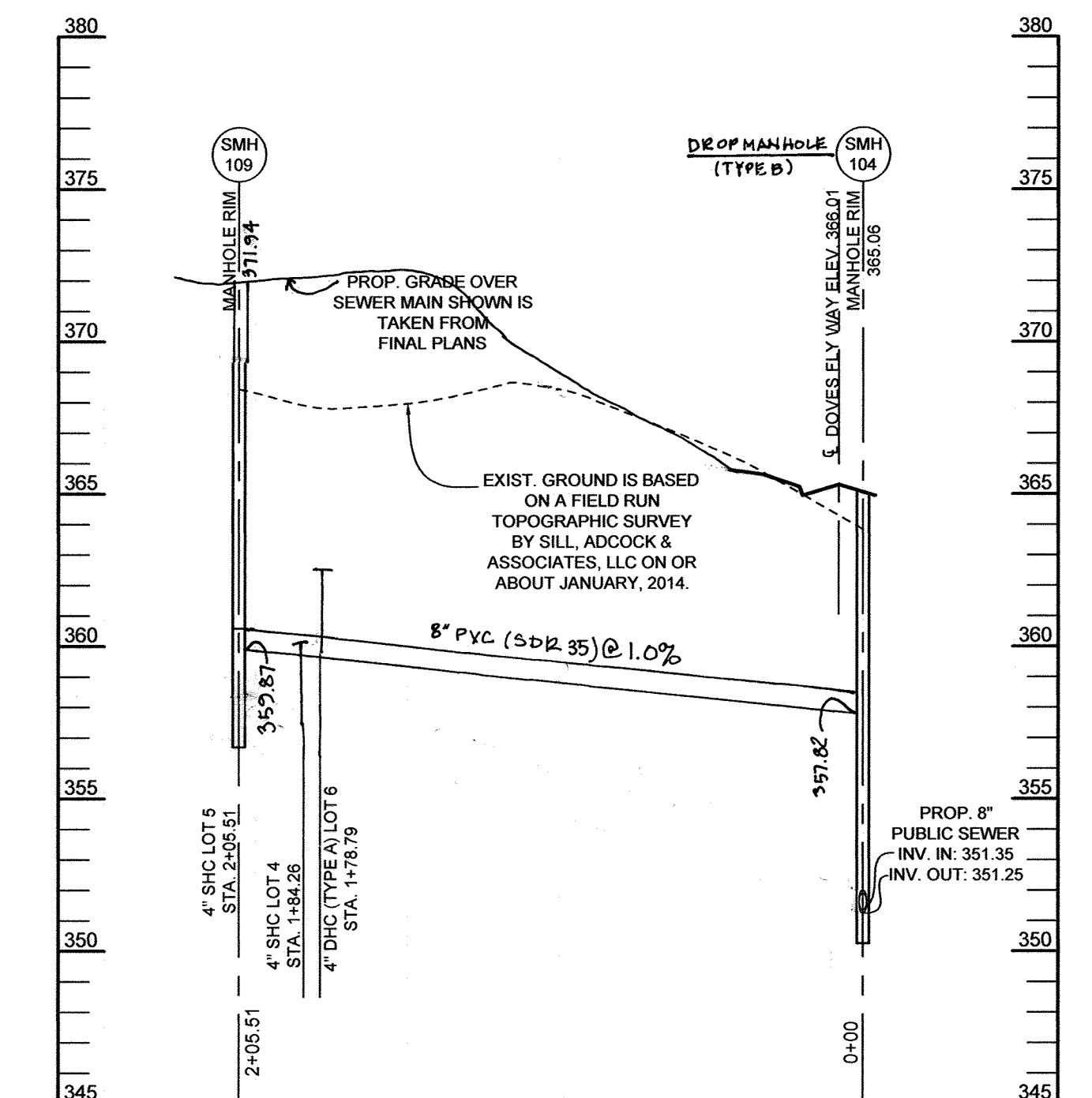
CONTRACT NO. 24-4874-D

SCALE: AS SHOWN

SHEET NO. 2 OF 4



SEWER PROFILE  
SCALE: HORIZONTAL: 1"=50'  
VERTICAL: 1"=5'



SEWER PROFILE  
SCALE: HORIZONTAL: 1"=50'  
VERTICAL: 1"=5'

SEWER HOUSE CONNECTION SCHEDULE

LOT NO.	ADDRESS	LOCATION DIMENSION 1	LOCATION DIMENSION 2	INVERT OF 8" MAIN	INVERT @ RW	MIN. CELLAR ELEV.	BASEMENT FLOOR	FIRST FLOOR	SLOPE	REMARKS
1	8640 DOVES FLY WAY	SMH 102 - 72.6'	FIRE HYDRANT - 17.4'	345.16	345.97	350.21	350.50	360.50	2.0%	S-2.11
2*	8636 DOVES FLY WAY	SMH 102 - 37.6'	FIRE HYDRANT - 65.6'	346.77	350.03	352.15	354.60	364.60	2.0%	S-2.12
3*	8632 DOVES FLY WAY	SMH 102 - 44.4'	SMH 102 - 87.8'	349.92	354.82	355.06	358.90	368.90	2.0%	S-2.12
4	8628 DOVES FLY WAY	SMH 109 - 23.4'	TWOC 5/6 - 38.4'	359.64	360.03	364.04	364.40	374.40	2.0%	S-2.11
5	8624 DOVES FLY WAY	SMH 109 - 24.4'	WHC 4 - 55.3'	359.87	360.38	364.62	365.60	375.60	2.0%	S-1.32
6*	8620 DOVES FLY WAY	SMH 109 - 33.8'	WHC 4 - 31.3'	359.61	362.47	364.31	366.60	376.60	2.0%	S-2.12
7*	8616 DOVES FLY WAY	I-5 - 25.6'	I-4 - 47.2'	351.61	357.27	356.79	361.70	371.70	2.0%	S-2.12
8	OPEN SPACE									
9	8612 DOVES FLY WAY	SMH 107 - 40.6'	I-7 - 38.6'	361.21	361.92	366.01	366.50	376.50	2.0%	S-2.11
10	8608 DOVES FLY WAY	SMH 108 - 60.2'	AIR RELEASE MH - 44.8'	364.90	365.53	369.59	369.60	379.60	2.0%	S-2.11
11	8604 DOVES FLY WAY	SMH 108 - 23.7'	AIR RELEASE MH - 16.3'	367.57	368.00	372.28	372.70	382.70	2.0%	S-2.11
12*	8598 DOVES FLY WAY	SMH 108 - 13.5'	AIR RELEASE MH - 27.6'	367.56	367.91	372.32	372.60	382.60	2.0%	G-5.11
13	8594 DOVES FLY WAY	SMH 108 - 52.7'	AIR RELEASE MH - 44.5'	365.15	365.52	369.75	370.40	380.40	2.0%	S-2.11
14	8590 DOVES FLY WAY	I-7 - 60.6'	SMH 107 - 39.2'	361.70	362.07	366.28	367.20	377.20	2.0%	S-2.11
15	8586 DOVES FLY WAY	I-7 - 36.6'	SMH 107 - 15.2'	359.17	359.84	363.69	363.70	373.70	2.0%	S-2.11
16	8585 DOVES FLY WAY	SMH 106 - 29.2'	I-3 - 77.3'	356.58	357.36	361.12	361.80	371.80	2.0%	G-5.11
17	8581 DOVES FLY WAY	SMH 106 - 45.2'	I-3 - 57.4'	352.66	353.27	357.33	358.00	368.00	1.0%	S-2.11

\* DROP HOUSE CONNECTION

STRUCTURE SCHEDULE

NO.	TYPE	LOCATION	TOP ELEV.	INV. IN	INV. OUT	REMARKS
101	DOGHOUSE 4" PRECAST MANHOLE	N 534,412.95 E 1,349,664.72	345.52	339.91	339.81	G-5.14
102	STD. 4" PRECAST MANHOLE	N 534,616.31 E 1,349,584.45	358.36	347.43	347.33	G-5.12
103	STD. 4" PRECAST MANHOLE	N 534,714.86 E 1,349,528.58	363.48	350.92	350.82	G-5.12
104	STD. 4" PRECAST MANHOLE	N 534,763.26 E 1,349,482.53	365.06	351.82 (60) 351.35 (67)	351.25	G-5.12
105	STD. 4" PRECAST MANHOLE	N 534,821.30 E 1,349,394.27	366.17	351.98	351.88	G-5.12
106	STD. 4" PRECAST MANHOLE	N 534,878.17 E 1,349,280.18	368.32	354.58	352.72	G-5.12
107	STD. 4" PRECAST MANHOLE	N 534,828.91 E 1,349,209.33	370.44	359.71	359.61	G-5.12
108	STD. 4" PRECAST MANHOLE	N 534,887.7 E 1,349,140.31	377.78	367.91	367.54	G-5.12
109	STD. 4" PRECAST MANHOLE	N 534,607.42 E 1,349,348.56	371.94	360.35	359.67	G-5.12

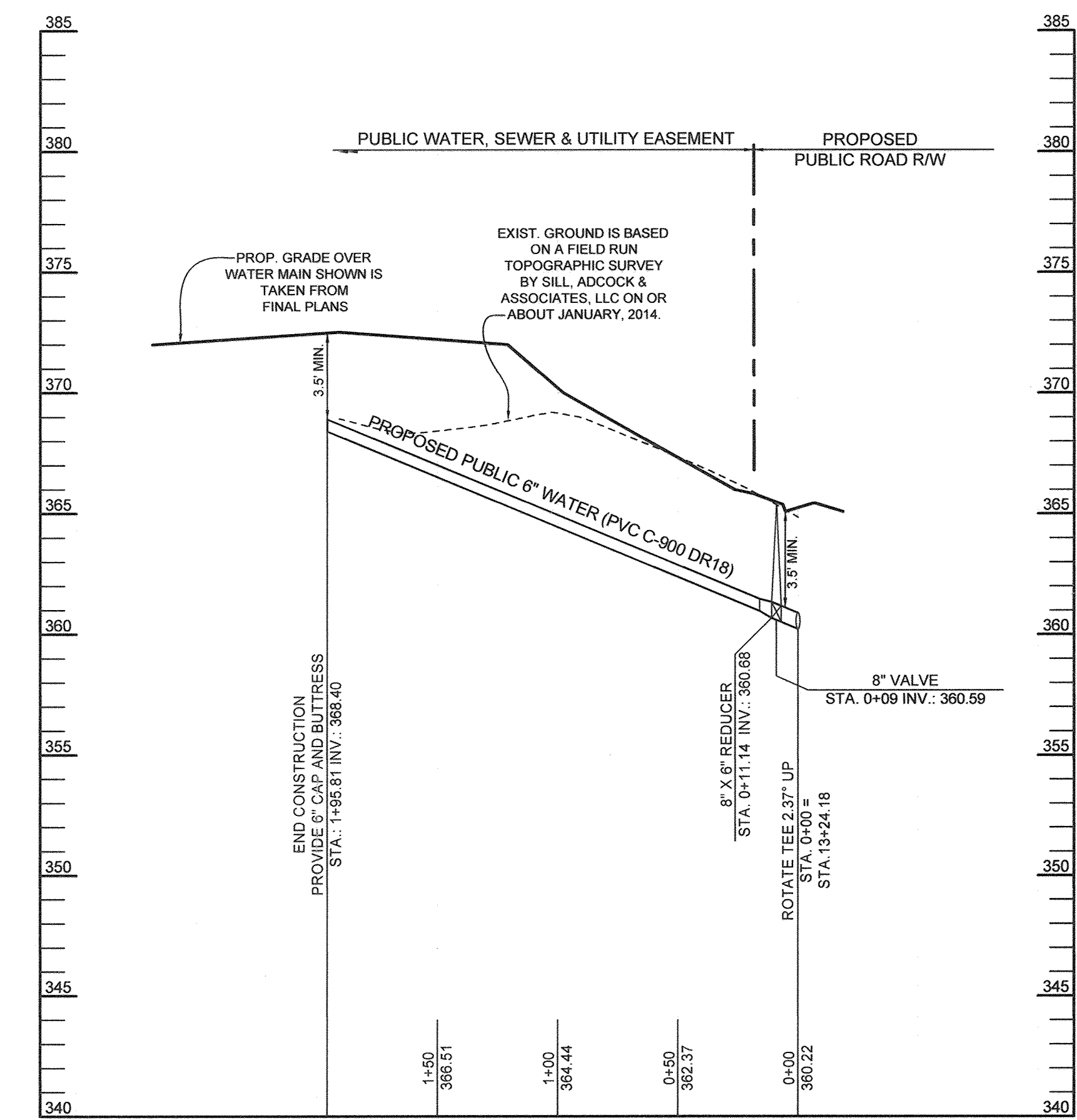
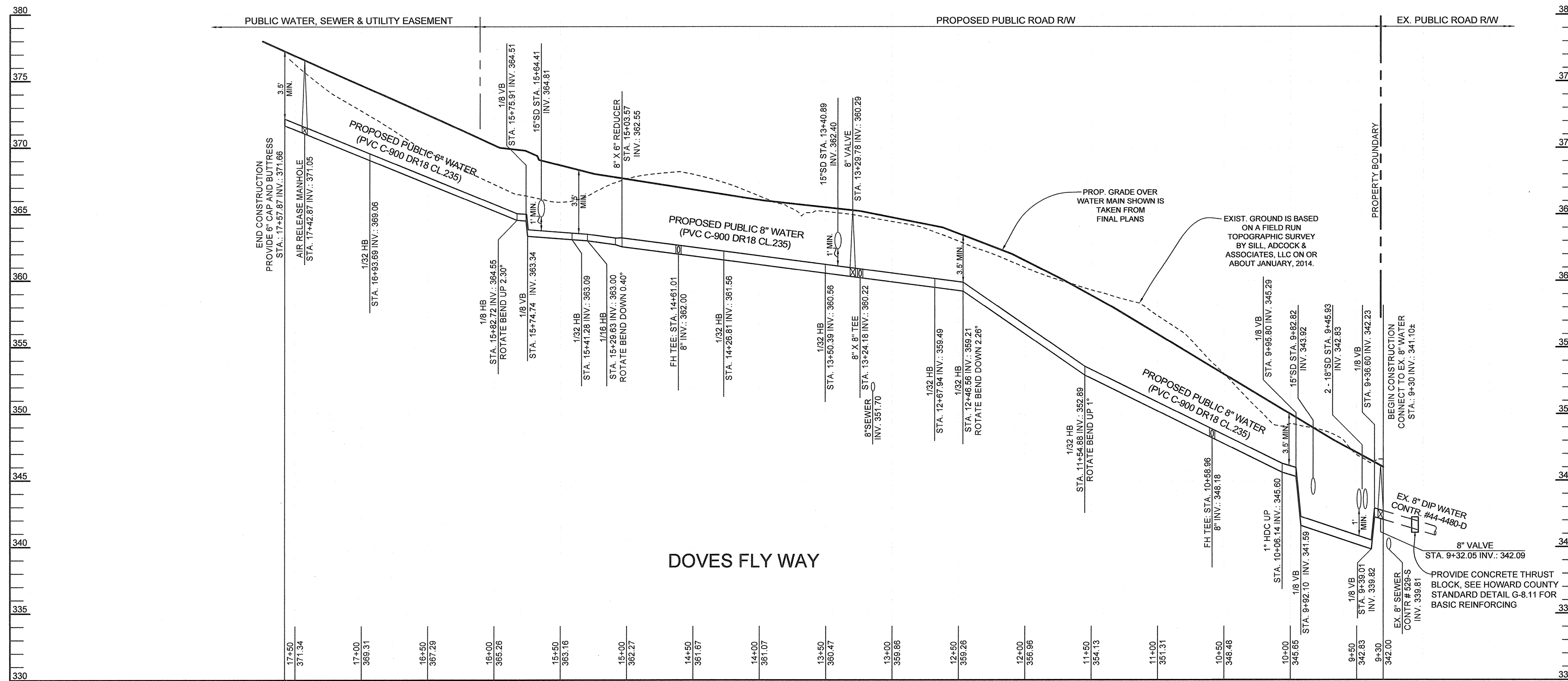
- NOTES:  
1. TOP ELEVATIONS FOR PRECAST MANHOLES ARE TO THE CENTER TOP OF MANHOLE COVER.  
2. TOP SLOPE OF STRUCTURES TO CONFORM TO SLOPE OF PAVING/GROUND.  
3. LOCATION COORDINATES ARE CENTER OF STRUCTURE FOR MANHOLES.

THE PURPOSE OF THIS REVISED PLAN IS TO SHOW THE REVISED GRADES. THE GRADES WERE RAISED TO LOWER THE AMOUNT OF CUT FOR THE SITE.

AS BUILTS  
BY: DFI DATE: 6-20-18

OWNER/DEVELOPER  
WILLIAMSBURG GROUP  
5485 HARRIS FARM ROAD, SUITE 200  
COLUMBIA, MARYLAND 21044  
410.997.8800

DEPARTMENT OF PUBLIC WORKS HOWARD COUNTY, MARYLAND   CHIEF, BUREAU OF UTILITIES DATE: 5/23/17	DEPARTMENT OF PLANNING AND ZONING HOWARD COUNTY, MARYLAND   CHIEF, DEVELOPMENT ENGINEERING DIVISION DATE: 6-13-17	 <b>SILL ENGINEERING GROUP, LLC</b> 11130 Dovedale Court, Suite 200 Marriottsville, Maryland 21104 Phone: 443.325.5076 Fax: 410.696.2022 Email: info@sillengineering.com Civil Engineering for Land Development	DESIGNED BY: PS DRAWN BY: RA CHECKED BY: PS DATE: MAY 3, 2017	NO. 1 DESCRIPTION: AS BUILT - GRADING REVISION DATE: 6/20/18 16/19/2017	FINAL PUBLIC SEWER PROFILE 600' SCALE MAP NO. 47 BLOCK NO. 7	DOVES FLY LOTS 1 THRU 7 AND LOTS 9 TO 17 AND OPEN SPACE LOTS 8, 18 AND 19 TAX MAP 47 GRID 7 PARCEL 126 6TH ELECTION DISTRICT HOWARD COUNTY, MARYLAND CONTRACT NO. 24-4874-D	SCALE: AS SHOWN SHEET NO. 3 OF 4
--	--	--	--	--	---	--	-------------------------------------



**WATER PROFILE**

SCALE: HORIZONTAL: 1"=50'  
VERTICAL: 1"=5'

**WATER PROFILE**

SCALE: HORIZONTAL: 1"=50'  
VERTICAL: 1"=5'

WATER HOUSE CONNECTION SCHEDULE			
LOT NO.	ADDRESS	LOCATION DIMENSION 1	LOCATION DIMENSION 2
1	8640 DOVES FLY WAY	SMH 102 - 02.4'	FIRE HYDRANT - 27.9'
2	8636 DOVES FLY WAY	SMH 102 - 31.6'	FIRE HYDRANT - 37.2'
3	8632 DOVES FLY WAY	SMH 103 - 38.3'	SMH 104 - 87.8'
4	8628 DOVES FLY WAY	SMH 109 - 32.4'	TWMC 5/6 - 43.9'
5	8624 DOVES FLY WAY	SMH 109 - 21.6'	WHC 4 - 43.9'
6	8620 DOVES FLY WAY	SMH 109 - 21.6'	WHC 4 - 43.9'
7	8616 DOVES FLY WAY	I-5 - 26.6'	I-4 - 46.2'
8	OPEN SPACE		
9	8612 DOVES FLY WAY	SMH 107 - 47.1'	I-7 - 48.6'
10	8608 DOVES FLY WAY	SMH 108 - 50.8'	AIR RELEASE MH - 35.2'
11	8604 DOVES FLY WAY	SMH 108 - 22.1'	AIR RELEASE MH - 21.5'
12	8598 DOVES FLY WAY	SMH 108 - 41.7'	AIR RELEASE MH - 30.4'
13	8594 DOVES FLY WAY	SMH 108 - 41.9'	AIR RELEASE MH - 33.9'
14	8590 DOVES FLY WAY	SMH 107 - 49.2'	I-7 - 68.4'
15	8586 DOVES FLY WAY	SMH 107 - 9.4'	I-7 - 38.4'
16	8585 DOVES FLY WAY	SMH 106 - 32.7'	I-3 - 71.2'
17	8581 DOVES FLY WAY	SMH 106 - 32.7'	I-3 - 71.2'

**WATER FITTING CHART**

STATION	TYPE	LOCATION	INV.
9+32.05	8" VALVE	N 534,417.88 E 1,349,647.72	342.09
9+36.60	1/8 VERTICAL BEND	N 534,422.11 E 1,349,646.05	342.23
9+39.01	1/8 VERTICAL BEND	N 534,424.35 E 1,349,645.17	339.82
9+92.10	1/8 VERTICAL BEND	N 534,473.73 E 1,349,625.68	341.59
9+95.80	1/8 VERTICAL BEND	N 534,477.18 E 1,349,624.32	345.29
10+06.14	1" HIGH DEFLECTION COUPLING	N 534,486.79 E 1,349,620.52	345.60
10+68.96	FIRE HYDRANT TEE	N 534,535.93 E 1,349,601.13	348.18
11+54.88	1/32 HORIZONTAL BEND	N 534,625.15 E 1,349,585.91	352.89
12+46.56	1/32 HORIZONTAL BEND	N 534,705.18 E 1,349,521.16	359.21
12+67.94	1/32 HORIZONTAL BEND	N 534,722.01 E 1,349,507.97	359.49
13+24.18	8" X 8" TEE	N 534,758.64 E 1,349,465.30	360.22
13+29.78	8" VALVE	N 534,762.46 E 1,349,460.89	360.29
13+50.39	1/32 HORIZONTAL BEND	N 534,775.70 E 1,349,445.40	360.56
14+26.81	1/32 HORIZONTAL BEND	N 534,813.28 E 1,349,378.86	361.56
14+61.01	FIRE HYDRANT TEE	N 534,823.94 E 1,349,346.37	362.00
15+03.57	8" X 6" REDUCER	N 534,837.73 E 1,349,304.35	362.55
15+29.63	1/16 HORIZONTAL BEND	N 534,845.33 E 1,349,281.17	363.00
15+41.28	1/32 HORIZONTAL BEND	N 534,844.45 E 1,349,269.55	363.09
15+74.74	1/8 VERTICAL BEND	N 534,836.23 E 1,349,236.79	363.34
15+75.91	1/8 VERTICAL BEND	N 534,836.00 E 1,349,235.96	364.51
15+82.72	1/8 HORIZONTAL BEND	N 534,833.32 E 1,349,229.63	364.55
16+93.69	1/32 HORIZONTAL BEND	N 534,807.42 E 1,349,348.56	369.06
17+42.87	AIR RELEASE MANHOLE	N 534,692.53 E 1,349,153.21	371.05
17+57.87	6" CAP AND BUTTRESS	N 534,683.35 E 1,349,148.65	371.66
00+09	8" VALVE	N 534,751.83 E 1,349,459.45	360.59
00+11.14	8" X 6" REDUCER	N 534,749.94 E 1,349,457.82	360.68
1+95.81	6" CAP AND BUTTRESS	N 534,810.14 E 1,349,337.71	368.40

THE PURPOSE OF THIS REVISED PLAN IS TO SHOW THE REVISED GRADES. THE GRADES WERE RAISED TO LOWER THE AMOUNT OF CUT FOR THE SITE.

**AS BUILTS**  
1" = DFI DATE: 6-20-18

**OWNER/DEVELOPER**

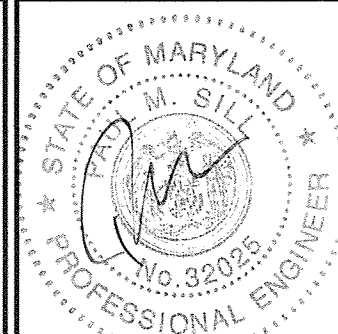
WILLIAMSBURG GROUP  
5485 HARPERS FARM ROAD, SUITE 200  
COLUMBIA, MARYLAND 21044  
410.997.8800

DEPARTMENT OF PUBLIC WORKS  
HOWARD COUNTY, MARYLAND

DEPARTMENT OF PLANNING AND ZONING  
HOWARD COUNTY, MARYLAND



11130 Dovedale Court, Suite 200  
Marriottsville, Maryland 21104  
Phone: 443.325.5076  
Fax: 410.696.2022  
Email: info@sillengineering.com  
Civil Engineering for Land Development



DESIGNED BY: PS  
DRAWN BY: RA  
CHECKED BY: PS  
DATE: NOVEMBER 15, 2017

NO.	DESCRIPTION	DATE
1	AS BUILT GRADING REVISION	6/20/18
		07/07/2017

**REVISED FINAL PUBLIC WATER PROFILE**

600' SCALE MAP NO. 47 BLOCK NO. 7

**DOVES FLY**  
LOTS 1 THRU 7 AND LOTS 9 TO 17 AND  
OPEN SPACE LOTS 8, 18 AND 19

TAX MAP 47 GRID 7 PARCEL 126  
6TH ELECTION DISTRICT HOWARD COUNTY, MARYLAND

CONTRACT NO. 24-4874-D

SCALE:  
AS  
SHOWN

SHEET NO.

4 OF 4