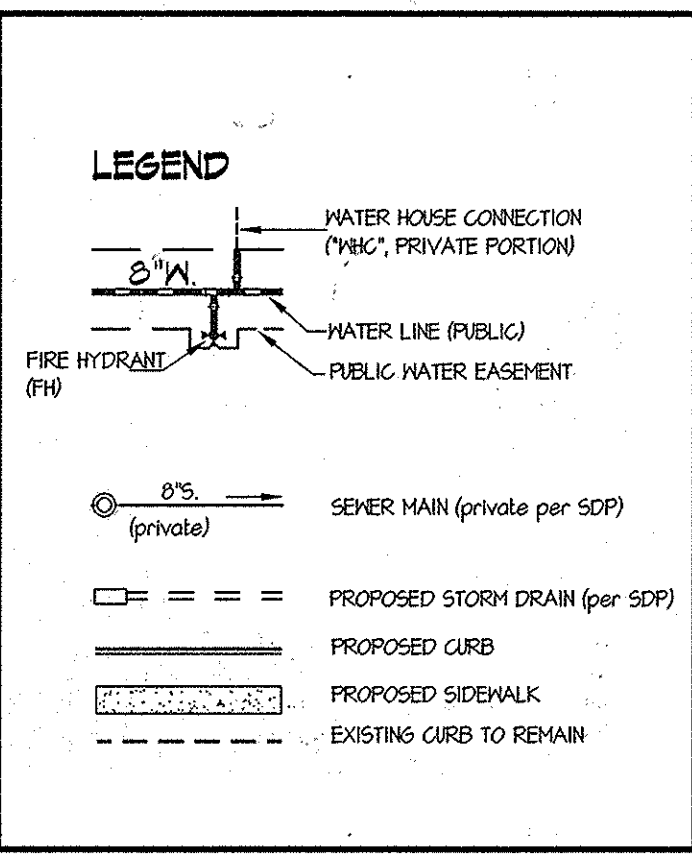


QUANTITIES				
ITEMS	QUANTITIES ESTIMATED	AS-BUILT		
		QUANTITIES	TYPE	
6" D.I.P. WATER	13 LF	13 LF	CL54 DIP	US PIPE + FOUNDRY
12" D.I.P. WATER	123 LF	123 LF	CL54 DIP	US PIPE + FOUNDRY
FIRE HYDRANT	1 EA	1 EA		KENNEDY VALVE
12" 1/2 HB	4 EA	4 EA		STAR PIPE PRODUCTS
6" VALVE	1 EA	1 EA		KENNEDY VALVE
12" VALVE	1 EA	1 EA		KENNEDY VALVE
DOWHOUSE MANHOLE	3 EA	3 EA		ATLANTIC CONCRETE PROD
PRECAST MANHOLE	3 EA	3 EA		ATLANTIC CONCRETE PROD
8" PVC SEWER MAIN	490 LF	490 LF	SDR35	NORTH AMERICAN

NAME OF UTILITY CONTRACTOR: **+**

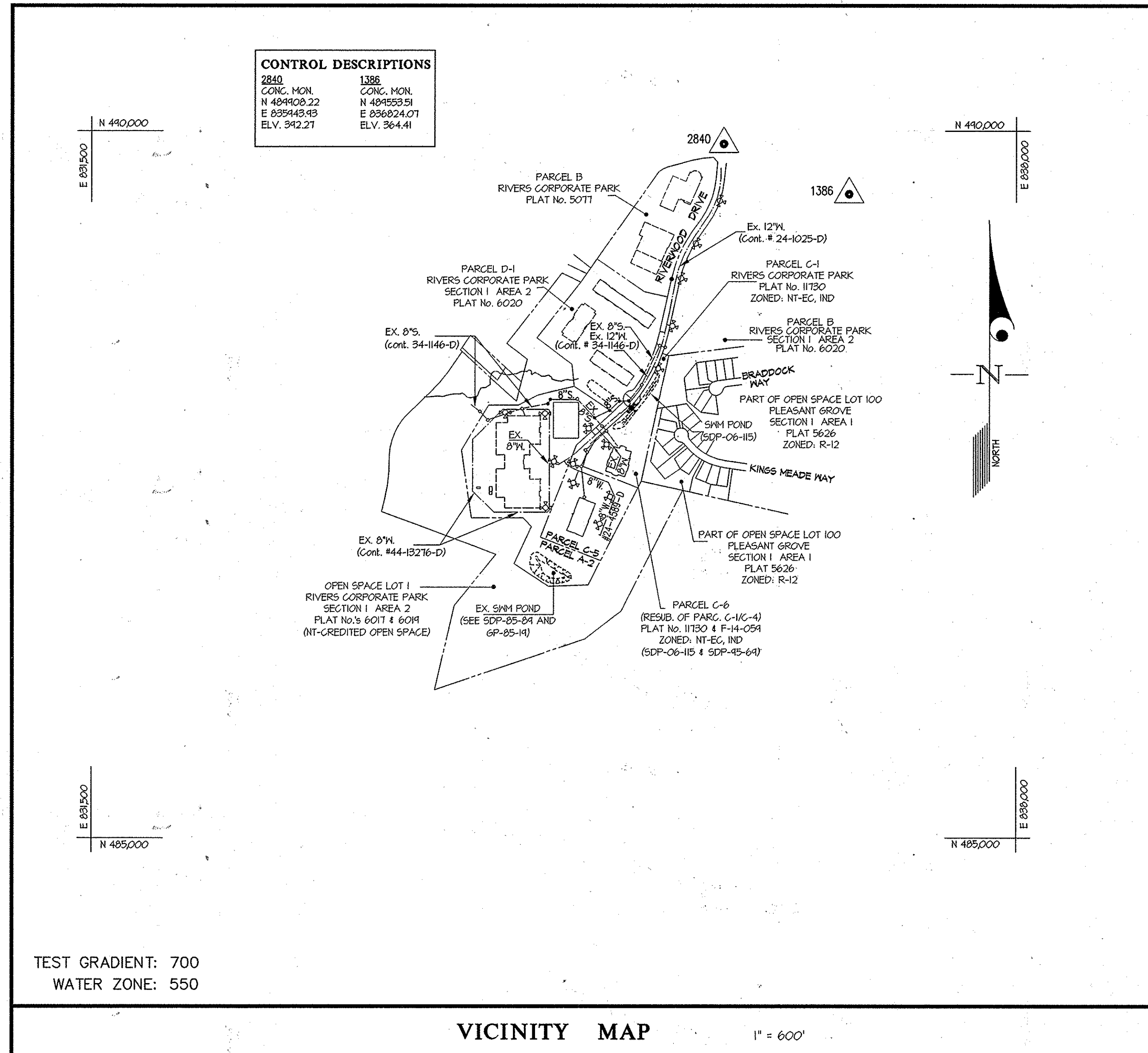
* GAINES: ALL WATER SMH 1 TO SMH 4

* GRAY & SON: SMH 5 TO SMH 6 SMH 6 TO SMH 18



SHEET INDEX

1.	TITLE SHEET
2.	WATER EXTENSION PLAN
3.	WATER EXTENSION PROFILE



CONTRACT No. 24-4851-D
 RIVERS CORPORATE PARK
 SECTION 1 AREA 2
 PARCELS A-2 and C-5
 HOWARD COUNTY, MARYLAND
 DEPARTMENT OF PUBLIC WORKS

OWNER/DEVELOPER
 COPT Riverwood, LLC
 c/o COPT DEVELOPMENT SERVICES, LLC
 6711 COLUMBIA GATEWAY DRIVE, SUITE 300
 COLUMBIA, MD 21046
 Phone: 443-285-5649
 Attn: DAVID NORFOLK

SEDIMENT CONTROL MEASURES WILL BE IMPLEMENTED IN ACCORDANCE WITH SECTION 308 OF VOLUME IV OF THE SPECIFICATIONS & WITH SITE DRAWINGS SDP-08-092, DRAWINGS FOR SEDIMENT & EROSION CONTROL.

U.S.D.A. NATURAL RESOURCES CONSERVATION SERVICE

THIS DEVELOPMENT PLAN IS APPROVED FOR SOIL EROSION AND SEDIMENT CONTROL BY THE HOWARD SOIL CONSERVATION DISTRICT.

APPROVED: *[Signature]* 2/18/14
 HOWARD S.C.D. DATE

DEPARTMENT OF PUBLIC WORKS
 HOWARD COUNTY, MARYLAND

[Signature] 2/20/14
 CHIEF, BUREAU OF UTILITIES DATE

DEPARTMENT OF PLANNING AND ZONING
 HOWARD COUNTY, MARYLAND

[Signature] 2-24-14
 CHIEF, DEVELOPMENT ENGINEERING DIVISION DATE

GLWGUTSCHICK LITTLE & WEBER, P.A.
 CIVIL ENGINEERS, LAND SURVEYORS, LAND PLANNERS, LANDSCAPE ARCHITECTS
 3909 NATIONAL DRIVE - SUITE 250 - BURTONSVILLE OFFICE PARK
 BURTONSVILLE, MARYLAND 20868
 TEL: 301-421-4024 BAL: 410-880-1820 DC/VA: 301-989-2524 FAX: 301-421-4188

DATE FEBRUARY 2014
 G.L.W. No. 06003

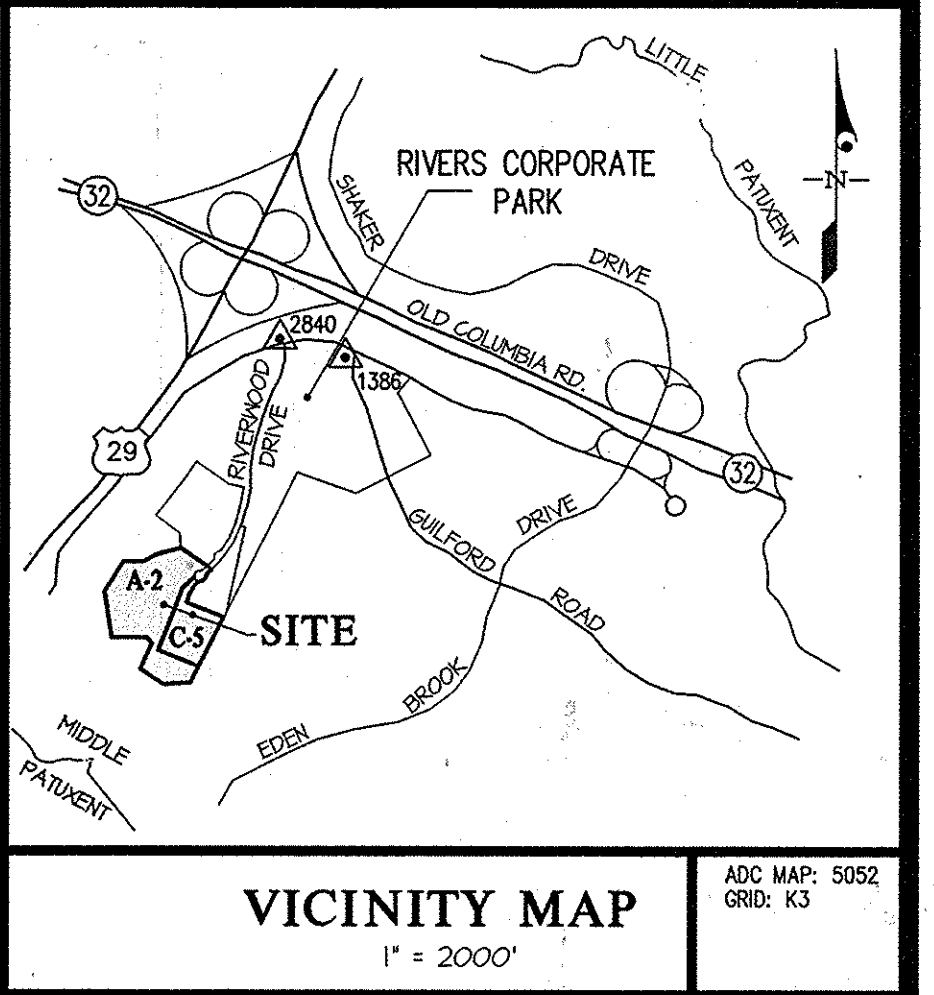
PROFESSIONAL CERTIFICATION

I HEREBY CERTIFY THAT THESE PLANS WERE PREPARED OR APPROVED BY ME, AND THAT I AM A DULY LICENSED PROFESSIONAL ENGINEER UNDER THE LAWS OF THE STATE OF MARYLAND, LICENSE NO. 12975
 EXP. DATE: MAY 26, 2014

[Signature] 2-17-14
 BY NO

KCI TECHNOLOGIES AS-BUILT DRAWINGS
 REVISION DATE 9/8/15

TYPE OF BUILDING	2 EX. OFFICE BLDG. & 1 NEW PARKING GARAGE
NUMBER OF UNITS	N/A
NUMBER OF S.H.C.'s	NO NEW SHC
NUMBER OF W.H.C.'s	NO NEW WHC
AREA OF COMMERCIAL LOT/PARCEL	24.81 AC.
SEWER SHED	LITTLE PATUXENT WRP
PUMPING STATION	N/A



- GENERAL NOTES**
- Part I**
- APPROXIMATE LOCATIONS OF EXISTING MAINS ARE SHOWN. THE CONTRACTOR SHALL TAKE ALL NECESSARY PRECAUTIONS TO PROTECT EXISTING MAINS AND SERVICES AND MAINTAIN UNINTERRUPTED SERVICE. ANY DAMAGE INCURRED SHALL BE REPAIRED IMMEDIATELY TO THE SATISFACTION OF THE ENGINEER AT THE CONTRACTOR'S EXPENSE.
 - EXISTING TOPOGRAPHY AND FEATURES WERE DERIVED FROM SDP-05-064, AVAILABLE PUBLIC RECORDS AND FROM SURVEY BY GUTSCHICK, LITTLE & WEBER, P.A. DONE IN JANUARY, 2006.
 - HORIZONTAL AND VERTICAL SURVEY CONTROLS: THE COORDINATES SHOWN ON THE DRAWINGS ARE BASED ON MARYLAND STATE REFERENCE SYSTEM NAD 83/91 AS PROJECTED BY HOWARD COUNTY GEODETIC CONTROL STATIONS NO. 2840 AND NO. 1386. ALL VERTICAL CONTROLS ARE BASED ON NAVD 83. VERTICAL CONTROLS PROVIDED ON DRAWINGS ARE 2840 & 1386.
 - ALL PIPE ELEVATIONS SHOWN ARE INVERT ELEVATIONS UNLESS OTHERWISE NOTED ON THE PLANS.
 - CLEAR ALL UTILITIES BY A MINIMUM OF 12 INCHES. CLEAR ALL POLES BY 5'-0" MINIMUM OR TUNNEL AS REQUIRED UNLESS OTHERWISE NOTED. THE OWNER HAS CONTACTED THE UTILITY COMPANIES AND HAS MADE ARRANGEMENTS FOR BRACING OF POLES AS SHOWN ON THE DRAWINGS. IN THE EVENT THE CONTRACTOR'S WORK REQUIRES THE BRACING OF ADDITIONAL POLES, ANY COST INCURRED BY THE OWNER FOR THE BRACING OF ADDITIONAL POLES OR DAMAGES SHALL BE DEDUCTED FROM MONIES OWED THE CONTRACTOR. THE CONTRACTOR SHALL COORDINATE WITH THE UTILITY COMPANIES TO SCHEDULE THE BRACING OF THE POLES.
 - FOR DETAILS NOT SHOWN ON THE DRAWINGS, AND FOR MATERIALS AND CONSTRUCTION METHODS, USE HOWARD COUNTY DESIGN MANUAL, VOLUME IV, STANDARD SPECIFICATIONS AND DETAILS FOR CONSTRUCTION (LATEST EDITION). THE CONTRACTOR SHALL HAVE A COPY OF VOLUME IV ON THE JOB.
 - WHERE TEST PITS HAVE BEEN MADE ON EXISTING UTILITIES, THEY ARE NOTED BY THE SYMBOL AT THE LOCATIONS OF THE TEST PITS. A NOTE OR NOTES CONTAINING THE RESULTS OF THE TEST PIT OR PITS IS INCLUDED ON THE DRAWINGS. EXISTING UTILITIES IN THE VICINITY OF THE PROPOSED WORK FOR WHICH TEST PITS HAVE NOT BEEN DONE SHALL BE LOCATED BY THE CONTRACTOR TWO WEEKS IN ADVANCE OF CONSTRUCTION OPERATIONS AT HIS OWN EXPENSE.
 - THE CONTRACTOR SHALL NOTIFY THE FOLLOWING UTILITY COMPANIES OR AGENCIES AT LEAST FIVE WORKING DAYS BEFORE STARTING WORK SHOWN ON THESE PLANS:

AT&T	1-800-252-1133
BGE (CONSTRUCTION SERVICES)	410-631-9713
BGE (EMERGENCY)	410-685-0125
BUREAU OF UTILITIES	410-313-4900
COLONIAL PIPELINE CO.	410-793-1900
MESG UTILITY	410-251-1111
STATE HIGHWAY ADMINISTRATION	410-531-5533
VERIZON	1-800-749-0033
 - TREES AND SHRUBS ARE TO BE PROTECTED FROM DAMAGE TO THE MAXIMUM EXTENT. TREES AND SHRUBS LOCATED WITHIN THE CONSTRUCTION STRIP ARE NOT TO BE REMOVED OR DAMAGED BY THE CONTRACTOR.
 - THE CONTRACTOR SHALL REMOVE TREES, STUMPS AND ROOTS ALONG THE LINE OF EXCAVATION. PAYMENT FOR SUCH REMOVAL SHALL BE INCLUDED IN THE UNIT PRICE BID FOR CONSTRUCTION OF THE MAIN.
 - THE CONTRACTOR SHALL NOTIFY THE BUREAU OF HIGHWAYS, HOWARD COUNTY, AT (410) 313-1450 AT LEAST FIVE WORKING DAYS BEFORE OPEN CUTTING OR BORING/JACKING OF ANY COUNTY ROAD FOR LAYING WATERSEWER MAINS OR HOSE CONNECTIONS. THE APPROVAL OF THESE DRAWINGS WILL CONSTITUTE COMPLIANCE WITH DPW REQUIREMENTS PER SECTION 10.14(A) OF THE HOWARD COUNTY CODE.

- PART II WATER**
- ALL WATER MAINS SHALL BE D.I.P. CLASS 54 UNLESS OTHERWISE NOTED.
 - TOPS OF ALL WATER MAINS SHALL HAVE A MINIMUM OF 3'-6" OF COVER UNLESS OTHERWISE NOTED.
 - VALVES ADJACENT TO TEES SHALL BE STRAPPED TO TEES.
 - ALL FITTINGS SHALL BE BUTTRESSED OR ANCHORED WITH CONCRETE IN ACCORDANCE WITH STANDARD DETAILS UNLESS OTHERWISE PROVIDED FOR ON THE DRAWINGS.
 - FIRE HYDRANTS SHALL BE SET TO THE BURY LINE ELEVATIONS SHOWN ON THE DRAWINGS. ALL FIRE HYDRANTS SHALL BE INSTALLED IN ACCORDANCE WITH STANDARD DETAILS. THE SOIL AROUND THE FIRE HYDRANT SHALL BE COMPACTED IN ACCORDANCE WITH SECTION 1000 AND SECTION 1005 OF THE STANDARD SPECIFICATIONS.
 - THE CONTRACTOR SHALL NOT OPERATE ANY WATER MAIN VALVES ON THE EXISTING WATER SYSTEM.
 - TRACERS, INERTS AND CONTINUITY TEST STATIONS SHALL BE INSTALLED ON ALL DIP AND PVC WATER MAINS IN ACCORDANCE WITH THE HOWARD COUNTY DESIGN MANUAL.
 - FOR PVC WATER MAINS, ALL RECORDS FOR THE QUALITY CONTROL AND QUALIFICATION TEST REQUIREMENTS NOTED IN SECTION 51 OF THE ANNA STANDARD C400 FOR PVC PRESSURE PIPE SHALL BE SUBMITTED WITH THE PIPE MATERIAL CERTIFICATIONS OR SHOP DRAWINGS PRIOR TO APPROVAL OF THE MATERIAL FOR USE. THE TEST RECORDS SHALL BE FOR THE PIPE TO BE INSTALLED UNDER THIS CONTRACT. ALL PVC PIPE SHALL CONTAIN MARKINGS TO ALLOW CROSS REFERENCING OF THE PIPE SUPPLIED TO THE TEST RECORDS RECEIVED.
 - UNLESS OTHERWISE NOTED ON THE PLANS OR IN THE SPECIFICATIONS SACRIFICIAL ANODES SHALL BE INSTALLED ON ALL VALVES AND METALLIC FITTINGS USED WITH PVC WATER MAINS IN ACCORDANCE WITH VOLUME IV, STANDARD SPECIFICATIONS AND DETAILS FOR CONSTRUCTION SEVENTEEN (17) POUND MAGNESIUM ANODES SHALL BE INSTALLED ON ALL VALVES AND DUCTILE IRON FITTINGS INCLUDING RESTRAINTS AND HARNESSES. TWELVE (12) POUND ZINC ANODES SHALL BE INSTALLED ON ALL STAINLESS STEEL FITTINGS AND SADDLES USED WITH PVC MAINS. ALL OTHERS USED WITH PVC MAINS SHALL BE DUCTILE IRON.
 - PROPER ASSEMBLY OF GASKETED PVC PIPE JOINTS: THE MANUFACTURER'S INSERTION LINE OF GASKETED PVC PIPE JOINTS INDICATES THE MAXIMUM DEPTH OF INSERTION OF THE SPIGOT INTO THE BELL. AFTER ASSEMBLY OF THE JOINT, THE INSERTION LINE SHALL REMAIN VISIBLE. DUAL INSERTION LINES ON GASKETED PVC PIPE INDICATE THE MAXIMUM AND MINIMUM DEPTH OF INSERTION OF THE SPIGOT INTO THE BELL. THE CONTRACTOR SHALL NOT OVER INSERT OR OVER MOVE THE SPIGOT INTO THE BELL OF PVC PIPE.
 - ALL CHANGES IN HORIZONTAL OR VERTICAL DIRECTION OF PVC WATER PIPE SHALL BE MADE WITH STANDARD BENDS, 5-DEGREE SWEEPS OR HIGH DEFLECTION (HD) COUPLINGS. NO BENDS OF THE PIPE OR DEFLECTING OF PVC PIPE JOINTS IS PERMITTED. WHERE HIGH DEFLECTION COUPLINGS OR 5-DEGREE SWEEPS ARE PERMITTED, THE CONTRACTOR SHALL PROVIDE ONE FULL PIPE LENGTH (10-FOOT LONG) ON EITHER SIDE OF THE HIGH DEFLECTION COUPLING OR 5-DEGREE SWEEP. THE CONTRACTOR SHALL USE A VIBRATORY PLATE COMPACTOR OR OTHER APPROVED MEANS TO THOROUGHLY COMPACT THE 51 STONE FILL IN BOTH SIDES OF THE HIGH DEFLECTION COUPLING OR 5-DEGREE SWEEP, TAKING CARE NOT TO USE COMPACTOR EQUIPMENT DIRECTLY OVER THE FITTING.

- PVC HIGH DEFLECTION COUPLINGS SHALL BE LIMITED TO A TOTAL DEFLECTION OF 3-DEGREES (1/4-DEGREE ON EITHER END OF THE COUPLING) SHALL BE RATED FOR A MINIMUM 200 PSI MEETING THE REQUIREMENTS OF ANNA C400. SHALL HAVE A MINIMUM LAY LENGTH OF 3-INCHES AND SHALL HAVE CRITER STOPPS. PVC HIGH DEFLECTION COUPLINGS SHALL BE CERTAINTED PVC HIGH DEFLECTION (HD) STOP COUPLINGS OR EQUAL. FIVE DEGREE SWEEPS SHALL BE BELL BY SPIGOT, RATED FOR A MINIMUM 225 PSI, DRID MEETING THE REQUIREMENTS OF ANNA C400 AND SHALL BE MULTI FITTINGS (PEX) BLUE BRUTE DRIB OR EQUAL.
- WHEN PVC HIGH DEFLECTION COUPLINGS OR PVC 5-DEGREE SWEEPS ARE USED TO FACILITATE CHANGES IN HORIZONTAL OR VERTICAL ALIGNMENTS OF ANNA C-400 PVC PIPELINES, THE CONTRACTOR SHALL INSTALL DEVICES FOR THE PREVENTION OF OVER-INSERTION OF THE PVC PIPE SPIGOTS OR FLAN ENDS INTO THE PUMP ON BELL JOINT ON BOTH SIDES OF THE HIGH DEFLECTION COUPLINGS AND 5 DEGREE SWEEPS. BELL STOPS SHALL BE PLACED AT THE PROPER INSERTION LINE FOR THE FITTING. THE BELL STOP SHALL BE MANUFACTURED OF DUCTILE IRON AND INCORPORATE AN EXPANSION RETENTION SPRING TO ALLOW FOR PIPE EXPANSION AND CONTRACTION. THE BELL STOPS SHALL BE SERIES 5000 MEGA-STOP, AS MANUFACTURED BY EDNA IRON, INC. OR APPROVED EQUAL.
- Part III Sewers**
- ALL SEWER MAINS SHALL BE D.I.P. OR P.V.C. UNLESS OTHERWISE NOTED.
 - ALL MANHOLES SHALL BE 4'-0" INSIDE DIAMETER UNLESS OTHERWISE NOTED.
 - FORCE MAINS SHALL BE D.I.P. ONLY.
 - MANHOLES SHOWN WITH 12" AND 16" WALLS ARE FOR BRICK MANHOLES ONLY.
 - MANHOLES DESIGNATED INT. IN PLAN AND PROFILE SHALL HAVE WATER-TIGHT FRAMES AND COVERS. STANDARD DETAIL 6552. WHERE WATER-TIGHT MANHOLE FRAMES AND COVERS ARE USED, SET TOP OF FRAME 1'-6" ABOVE FINISHED GRADE UNLESS OTHERWISE NOTED ON THE DRAWINGS.
 - HOUSE(S) WITH THE SYMBOL "C.N.S." INDICATES THAT THE CELLAR CANNOT BE SERVED.

DEPARTMENT OF PUBLIC WORKS HOWARD COUNTY, MARYLAND	DEPARTMENT OF PLANNING AND ZONING HOWARD COUNTY, MARYLAND	GLWGUTSCHICK LITTLE & WEBER, P.A. CIVIL ENGINEERS, LAND SURVEYORS, LAND PLANNERS, LANDSCAPE ARCHITECTS 3909 NATIONAL DRIVE - SUITE 250 - BURTONSVILLE OFFICE PARK BURTONSVILLE, MARYLAND 20868 TEL: 301-421-4024 BAL: 410-880-1820 DC/VA: 301-989-2524 FAX: 301-421-4188	DATE FEBRUARY 2014 G.L.W. No. 06003	PROFESSIONAL CERTIFICATION I HEREBY CERTIFY THAT THESE PLANS WERE PREPARED OR APPROVED BY ME, AND THAT I AM A DULY LICENSED PROFESSIONAL ENGINEER UNDER THE LAWS OF THE STATE OF MARYLAND, LICENSE NO. 12975 EXP. DATE: MAY 26, 2014	KCI TECHNOLOGIES AS-BUILT DRAWINGS REVISION DATE 9/8/15	TITLE SHEET 600' SCALE MAP NO. 42 BLOCK NO. 12	RIVERS CORPORATE PARK SECTION 1 AREA 2 PARCELS A-2 and C-5 HOWARD COUNTY, MARYLAND ELECTION DISTRICT No. 6 CONTRACT No. 24-4851-D	SCALE AS SHOWN SHEET 1 OF 3
---	--	--	--	--	--	---	--	--------------------------------

FITTING INFORMATION		
LOCATION	FITTING	NAD '27 COORDINATES
12" WATERLINE ALONG RIVERWOOD DRIVE		
C.L. ROAD STA. 64+11.4	12" 1/8" HB	N 488,204 E 835,213
C.L. ROAD STA. 64+48.5	12" 1/8" HB	N 488,204.16 E 835,223.21
C.L. ROAD STA. 64+46	BEGIN CRIMP, RADIUS	N 488,281.61 E 835,251.24
C.L. ROAD STA. 65+11	END CRIMP, RADIUS	N 488,248.53 E 835,261.87
C.L. ROAD STA. 65+22	12"x6" FHT	N 488,262.22 E 835,280.47
C.L. ROAD STA. 65+42	12" 1/8" HB	N 488,268.11 E 835,285.66
C.L. ROAD STA. 65+51	12" 1/8" HB	N 488,282.45 E 835,285.26
C.L. ROAD STA. 65+51	12" VALVE	N 488,281 E 835,284

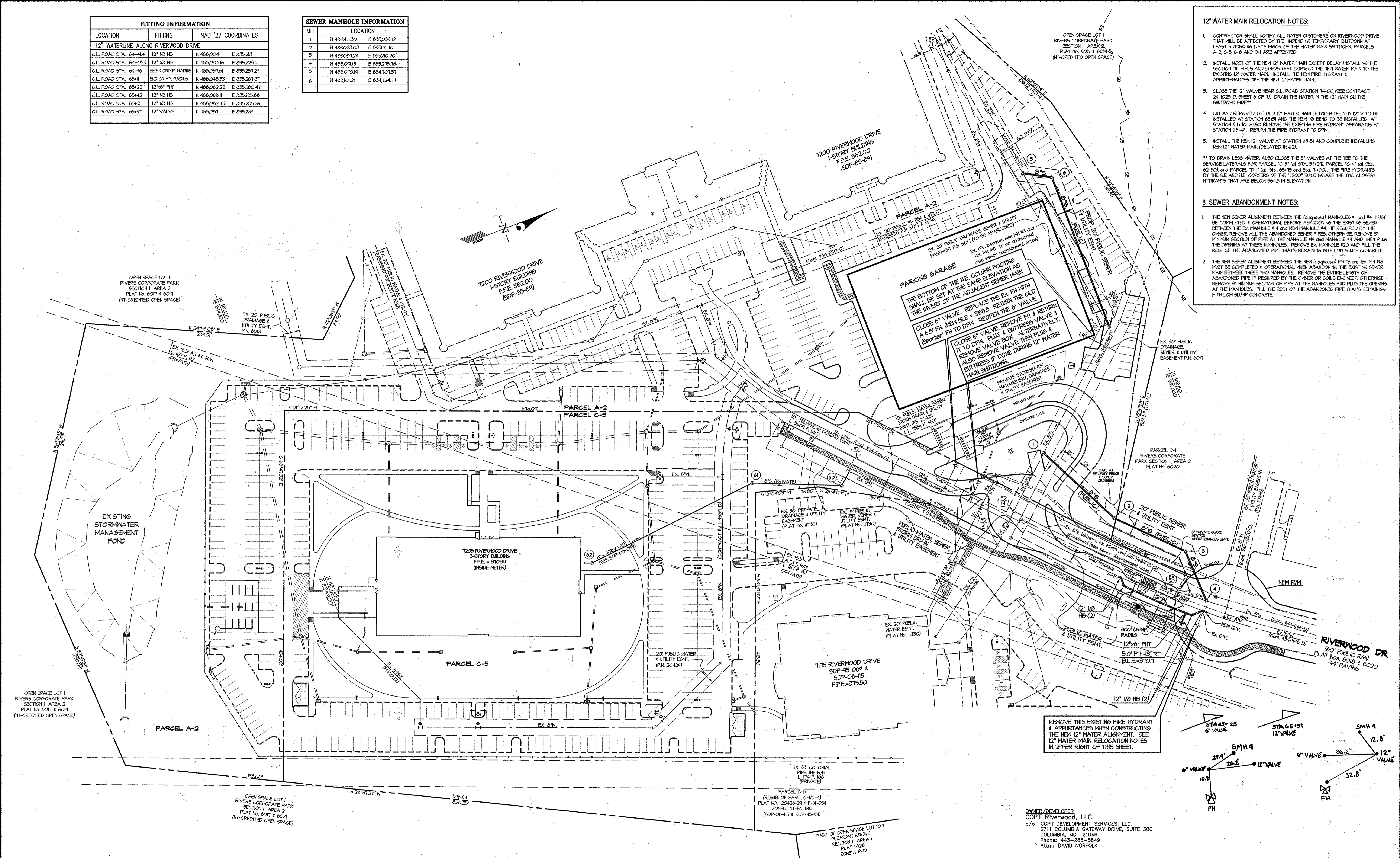
SEWER MANHOLE INFORMATION	
MH	LOCATION
1	N 481711.30 E 835,036.12
2	N 480023.03 E 83541.40
3	N 480024.24 E 835210.20
4	N 480091.15 E 835275.76
5	N 480070.19 E 834,107.97
6	N 488,101.21 E 834,124.11

12" WATER MAIN RELOCATION NOTES:

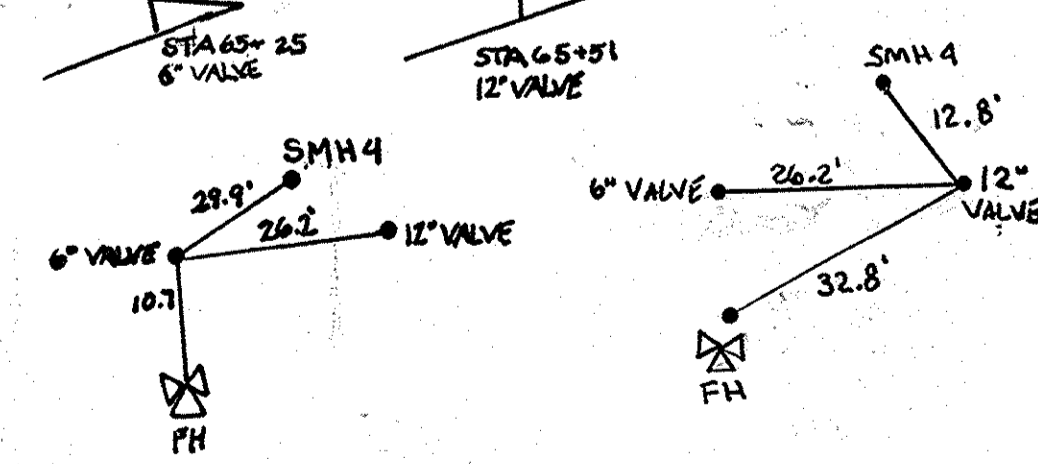
- CONTRACTOR SHALL NOTIFY ALL WATER CUSTOMERS ON RIVERWOOD DRIVE THAT WILL BE AFFECTED BY THE UPENDING TEMPORARY SHUTDOWN AT LEAST 5 WORKING DAYS PRIOR OF THE WATER MAIN SHUTDOWN. PARCELS A-2, C-5, C-6 AND D-1 ARE AFFECTED.
 - INSTALL MOST OF THE NEW 12" WATER MAIN EXCEPT DELAY INSTALLING THE SECTION OF PIPES AND BENDS THAT CONNECT THE NEW WATER MAIN TO THE EXISTING 12" WATER MAIN. INSTALL THE NEW FIRE HYDRANT & APPURTENANCES OFF THE NEW 12" WATER MAIN.
 - CLOSE THE 12" VALVE NEAR C.L. ROAD STATION 14+00. (SEE CONTRACT 24-485-D, SHEET 8 OF 10). DRAIN THE WATER IN THE 12" MAIN ON THE SHUTDOWN SIDE.**
 - CUT AND REMOVE THE OLD 12" WATER MAIN BETWEEN THE NEW 12" V TO BE INSTALLED AT STATION 65+11 AND THE NEW 1/8" END TO BE INSTALLED AT STATION 64+40. ALSO REMOVE THE EXISTING FIRE HYDRANT APPARATUS AT STATION 65+49. RETURN THE FIRE HYDRANT TO DPM.
 - INSTALL THE NEW 12" VALVE AT STATION 65+51 AND COMPLETE INSTALLING NEW 12" WATER MAIN (DELAYED IN #2).
- ** TO DRAIN LESS WATER, ALSO CLOSE THE 8" VALVES AT THE TEE TO THE SERVICE LATERALS FOR PARCEL C-5 (at STA. 54+24), PARCEL C-4 (at Sta. 62+50), AND PARCEL D-1 (at Sta. 65+15 and Sta. 71+00). THE FIRE HYDRANTS BY THE SE AND NE CORNERS OF THE "1200" BUILDING ARE THE TWO CLOSEST HYDRANTS THAT ARE BELOW 96+13 ELEVATION.

8" SEWER ABANDONMENT NOTES:

- THE NEW SEWER ALIGNMENT BETWEEN THE (doughnut) MANHOLES #1 AND #4 MUST BE COMPLETED & OPERATIONAL BEFORE ABANDONING THE EXISTING SEWER BETWEEN THE EX. MANHOLE #1 AND NEW MANHOLE #4. IF REQUIRED BY THE OWNER, REMOVE ALL THE ABANDONED SEWER PIPES, OTHERWISE, REMOVE 3' MINIMUM SECTION OF PIPE AT THE MANHOLE #1 AND MANHOLE #4 AND THEN PLUG THE OPENING AT THESE MANHOLES. REMOVE EX. MANHOLE #2 AND FILL THE REST OF THE ABANDONED PIPE THAT'S REMAINING WITH LOW SLUMP CONCRETE.
- THE NEW SEWER ALIGNMENT BETWEEN THE NEW (doughnut) MH #5 AND EX. MH #10 MUST BE COMPLETED & OPERATIONAL WHEN ABANDONING THE EXISTING SEWER MAIN BETWEEN THESE TWO MANHOLES. REMOVE THE ENTIRE LENGTH OF ABANDONED PIPE IF REQUIRED BY THE OWNER OR SOILS ENGINEER, OTHERWISE, REMOVE 3' MINIMUM SECTION OF PIPE AT THE MANHOLES AND PLUG THE OPENING AT THE MANHOLES. FILL THE REST OF THE ABANDONED PIPE THAT'S REMAINING WITH LOW SLUMP CONCRETE.



REMOVE THIS EXISTING FIRE HYDRANT & APPURTENANCES WHEN CONSTRUCTING THE NEW 12" WATER ALIGNMENT. SEE 12" WATER MAIN RELOCATION NOTES IN UPPER RIGHT OF THIS SHEET.



OWNER/DEVELOPER
COPT Riverwood, LLC
c/o COPT DEVELOPMENT SERVICES, LLC
6711 COLUMBIA GATEWAY DRIVE, SUITE 300
COLUMBIA, MD 21046
Phone: 443-285-5649
Attn: DAVID NORFOLK

DEPARTMENT OF PUBLIC WORKS
HOWARD COUNTY, MARYLAND
Seth C. Green
CHIEF, BUREAU OF UTILITIES
DATE: 2/24/14

DEPARTMENT OF PLANNING AND ZONING
HOWARD COUNTY, MARYLAND
Chad Plummer
CHIEF, DEVELOPMENT ENGINEERING DIVISION
DATE: 2/24/14

GLWGUTSCHICK LITTLE & WEBER, P.A.
CIVIL ENGINEERS, LAND SURVEYORS, LAND PLANNERS, LANDSCAPE ARCHITECTS
3959 NATIONAL DRIVE - SUITE 250 - BURTONSVILLE OFFICE PARK
BURTONSVILLE, MARYLAND 20866
TEL: 301-421-4024 BALT: 410-880-1820 DC/VA: 301-988-2524 FAX: 301-421-4186

DATE: FEBRUARY 2014
G.L.W. No. 06003

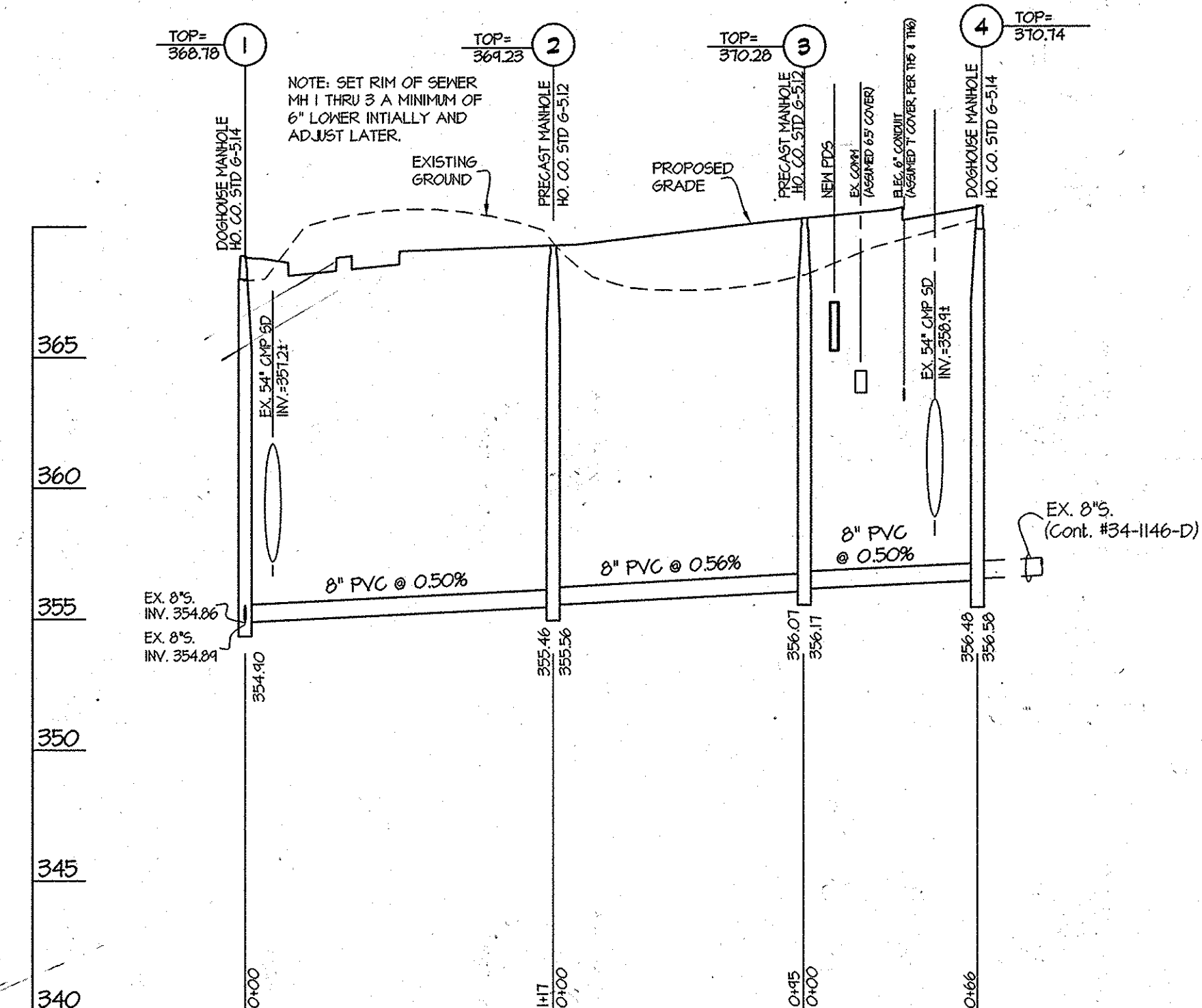
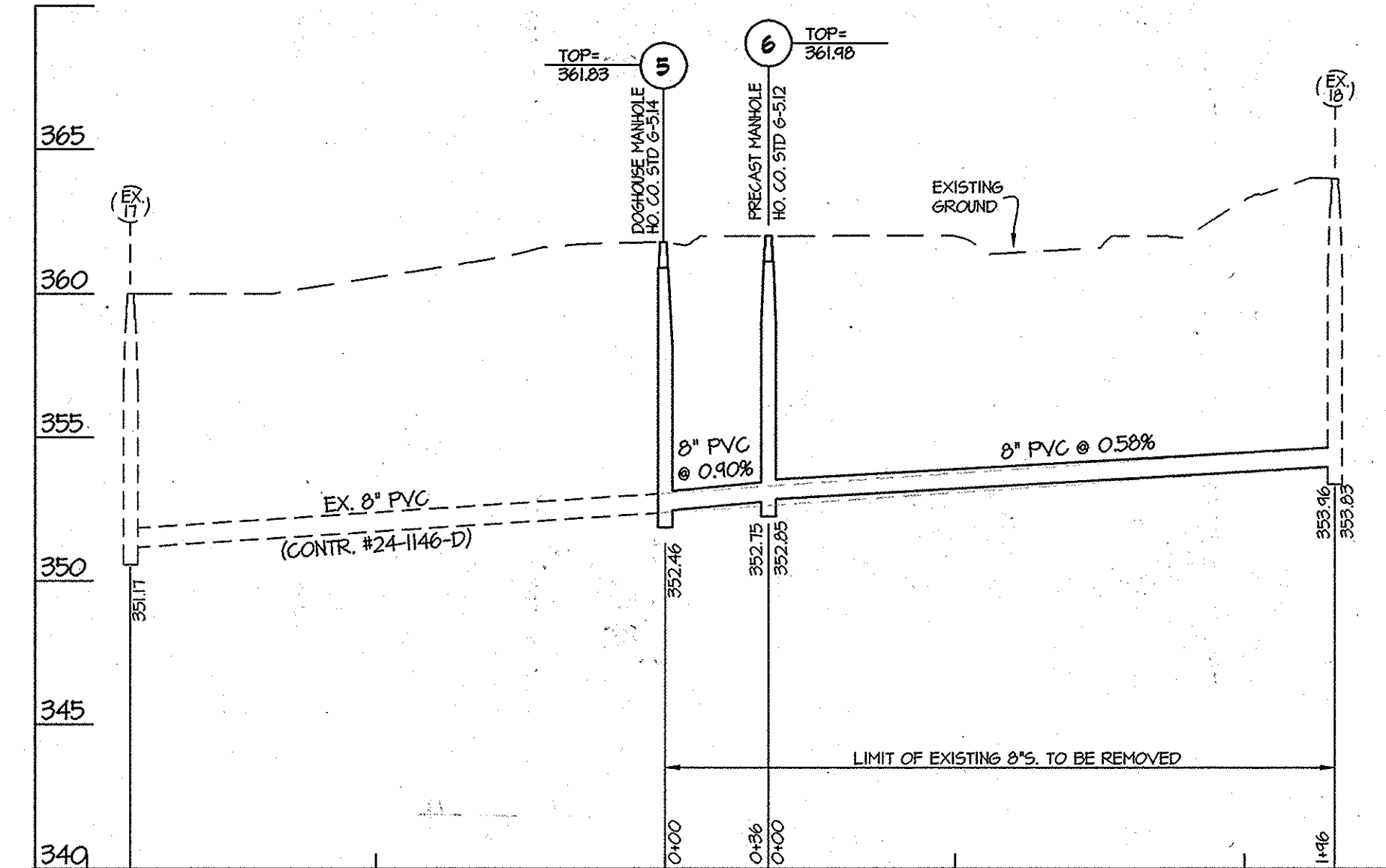
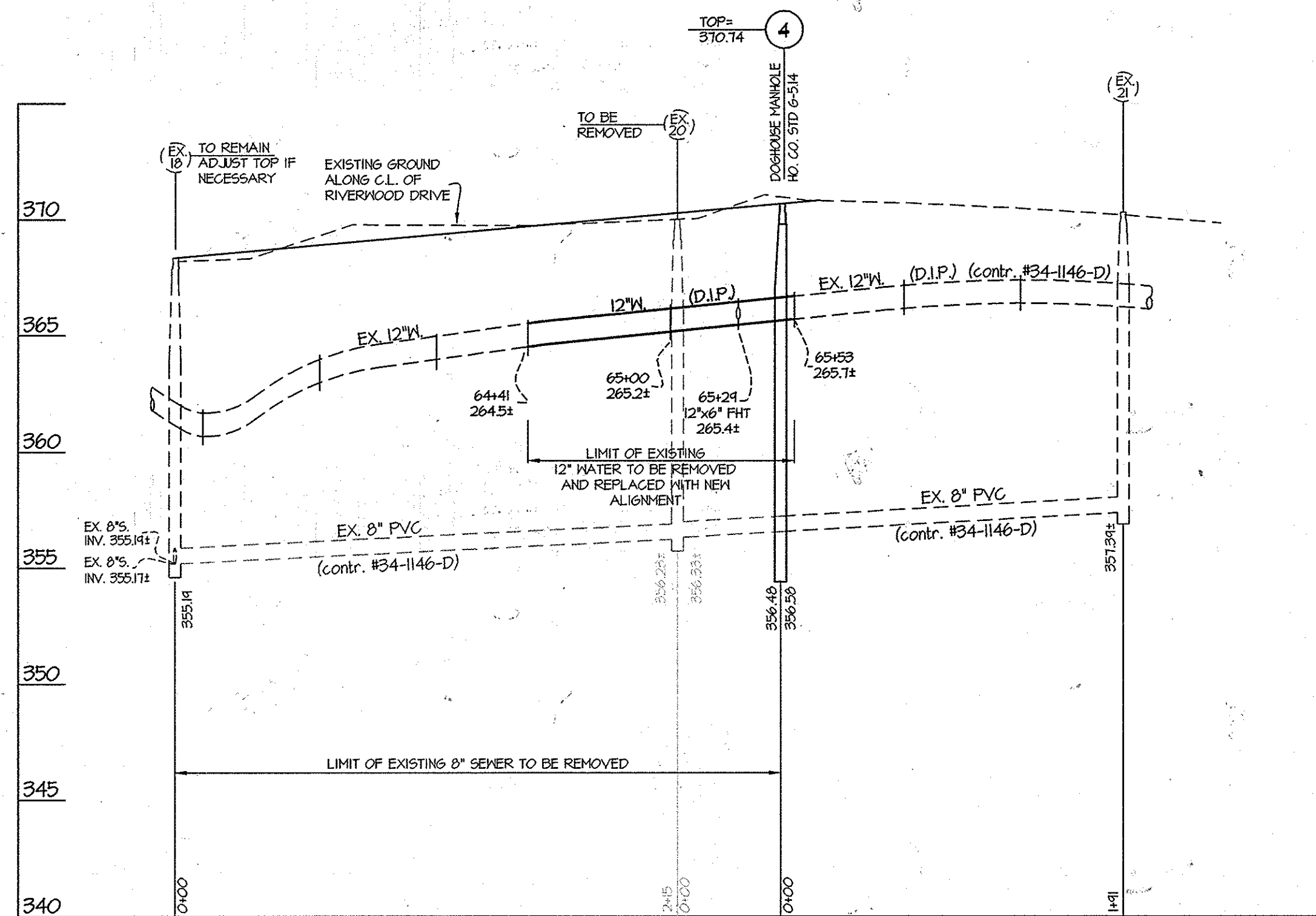
PROFESSIONAL CERTIFICATION
I HEREBY CERTIFY THAT THESE PLANS WERE PREPARED OR APPROVED BY ME, AND THAT I AM A DULY LICENSED PROFESSIONAL ENGINEER UNDER THE LAWS OF THE STATE OF MARYLAND.
LICENSE NO. 12975
EXP. DATE: MAY 26, 2014



BY: NO. 019
REVISION: RCI TECHNOLOGIES AS-BUILT DRAWINGS
DATE: 9/8/15

WATER and SEWER EXTENSION PLAN
600' SCALE MAP NO. 42 BLOCK NO. 12

RIVERS CORPORATE PARK
SECTION 1 AREA 2
PARCELS A-2 and C-5
HOWARD COUNTY, MARYLAND
ELECTION DISTRICT No. 6
CONTRACT No. 24-4851-D
SCALE: 1"=50'
SHEET: 2 OF 3



OWNER/DEVELOPER
 COPT Riverwood, LLC
 c/o COPT DEVELOPMENT SERVICES, LLC
 8711 COLUMBIA GATEWAY DRIVE, SUITE 300
 COLUMBIA, MD 21046
 Phone: 443-285-5649
 Attn.: DAVID NORFOLK

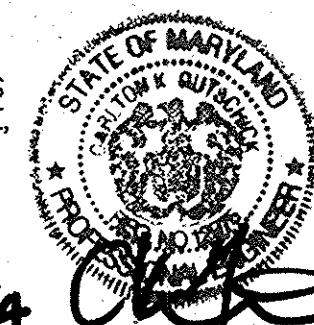
DEPARTMENT OF
 PUBLIC WORKS
 HOWARD COUNTY, MARYLAND
 Chief, Bureau of Utilities
 2/24/14

DEPARTMENT OF
 PLANNING AND ZONING
 HOWARD COUNTY, MARYLAND
 Chief, Development Engineering Division
 2-24-14

GLW GUTSCHICK LITTLE & WEBER, P.A.
 CIVIL ENGINEERS, LAND SURVEYORS, LAND PLANNERS, LANDSCAPE ARCHITECTS
 3909 NATIONAL DRIVE - SUITE 250 - BURTONSVILLE OFFICE PARK
 BURTONSVILLE, MARYLAND 20866
 TEL: 301-421-4024 BAL: 410-880-1820 DC/VA: 301-989-2524 FAX: 301-421-4186

DATE
 FEBRUARY
 2014
 G.L.W. No.
 06003

PROFESSIONAL CERTIFICATION
 I HEREBY CERTIFY THAT THESE PLANS
 WERE PREPARED OR APPROVED BY ME,
 AND THAT I AM A DULY LICENSED
 PROFESSIONAL ENGINEER UNDER THE
 LAWS OF THE STATE OF MARYLAND,
 LICENSE NO. 12975
 EXP. DATE: MAY 26, 2014
 2-17-14



NO	REVISION	DATE
1	KCI TECHNOLOGIES AS-BUILT DRAWINGS	9/8/15

WATER and SEWER
 EXTENSION PROFILES
 600' SCALE MAP NO. 42 BLOCK NO. 12

RIVERS CORPORATE PARK
 SECTION 1 AREA 2
 PARCELS A-2 and C-5
 HOWARD COUNTY, MARYLAND
 ELECTION DISTRICT No. 6
 CONTRACT No. 24-4851-D

SCALE
 1" = 50' VERT.
 1" = 5' HORIZ.
 SHEET
 3 OF 3