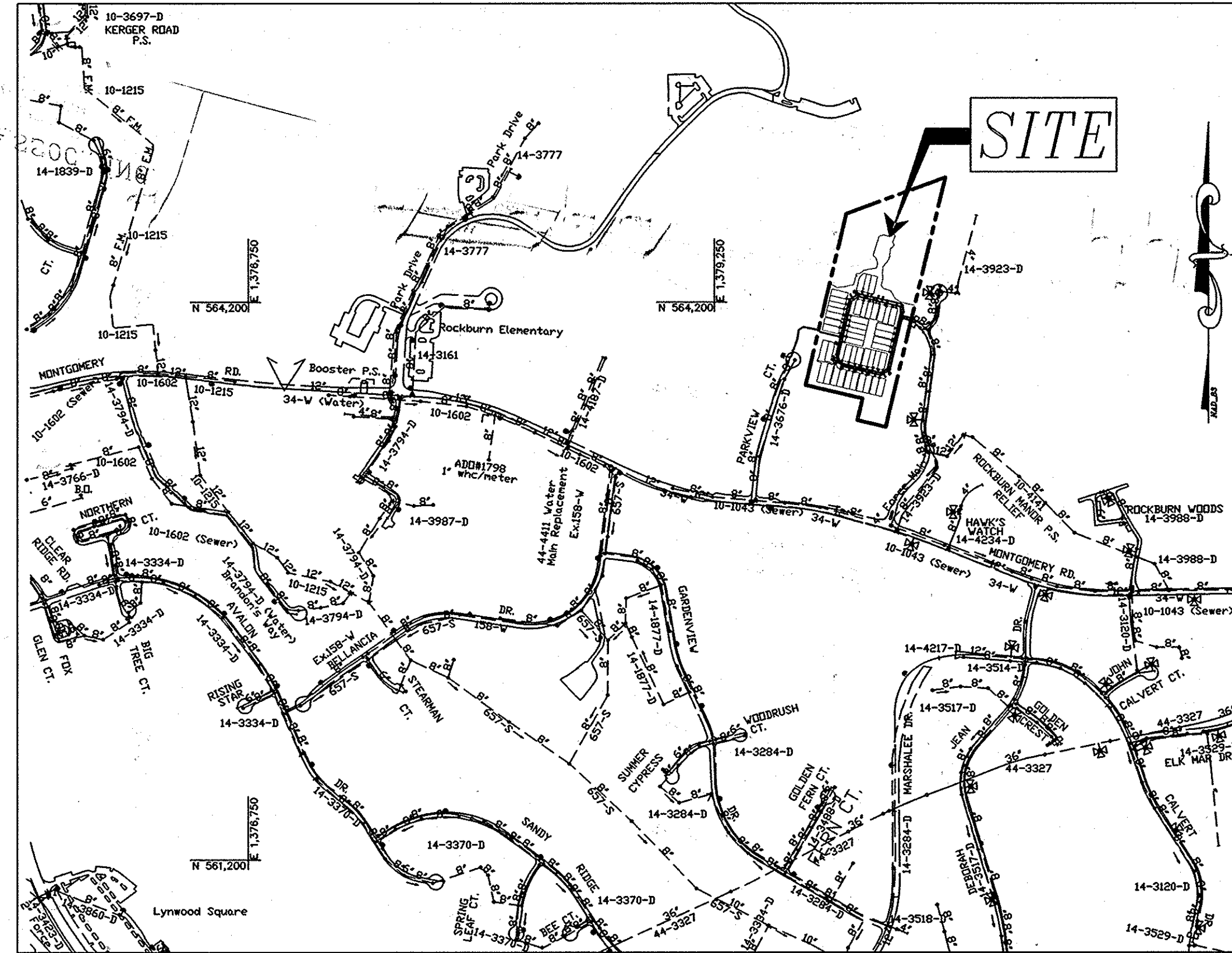


QUANTITY TABLE

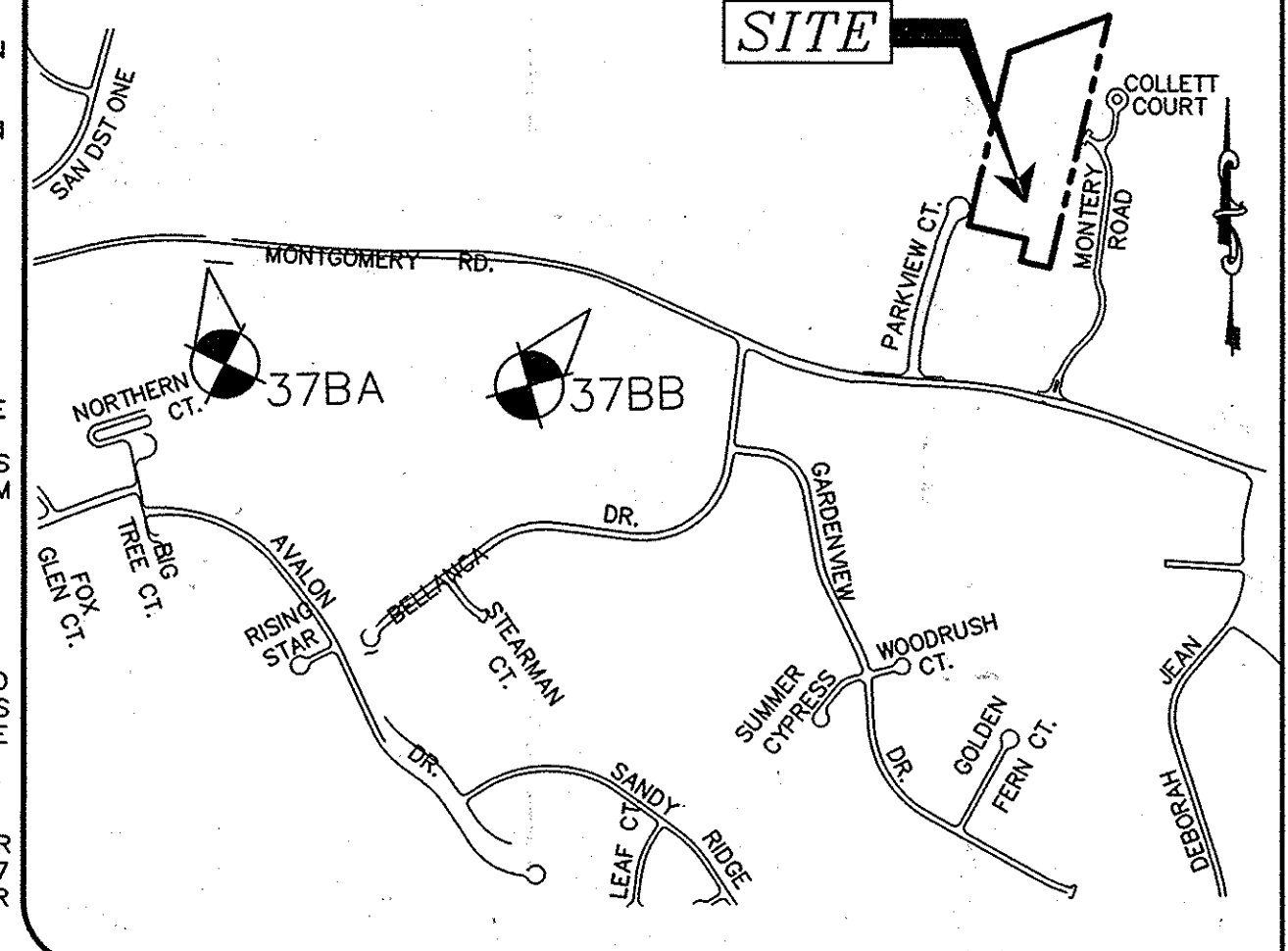
ITEMS	QUANTITIES		TYPE	MANUFACTURER/SUPPLIER
	ESTIMATED	QUANTITIES		
8" WATER MAIN (PVC C-900, DR-18)	1,745 LF	1762 LF	C900	NORTH AMERICAN
1 1/2" WATER HOUSE CONNECTION	610 LF	610 LF	COPPER	MUELLER
# 1 1/2" WHC	18 EACH	14 EACH	714642	AY McDONALD
# TWIN 1 1/2" WHC	14 EACH	16 EACH	7141421	AY McDONALD
8"x8" TEE	2 EACH	2 EACH	C153	TYLER UNION
8" GATE VALVES	5 EACH	5 EACH	EPOXY	MUELLER
8"x6" F.H.T. & V.	3 EACH	3 EACH	EPOXY	MUELLER
STANDARD MH (HO. CO. STD.G-5.11)	8 EACH	8 EACH	PRECAST	CPC
TYPE B DROP MH (HO. CO. STD.S-1.32)	2 EACH	2 EACH	PRECAST	CPC
8" SEWER MAIN	1,297 LF	1304 LF	SDR-35	NORTH AMERICAN
4" SHC	740 LF	741 LF	SDR-35	NORTH AMERICAN
# 4" SHC	22 EACH	20 EACH	SDR-35	
# 4" TWIN SHC	12 EACH	13 EACH	SDR-35	

NAME OF UTILITY CONTRACTOR:
 SURVEY AND DRAFTING DIVISION AS-BUILT DATE



LOCATION MAP
 SCALE: 1" = 600'

- UNLESS OTHERWISE NOTED ON THE PLANS OR IN THE SPECIFICATIONS SACRIFICIAL ANODES SHALL BE INSTALLED ON ALL VALVES AND METALLIC FITTINGS USED WITH PVC WATER MAINS IN ACCORDANCE WITH VOLUME IV, STANDARD SPECIFICATIONS AND DETAILS FOR CONSTRUCTION. SEVENTEEN (17) POUND MAGNESIUM ANODES SHALL BE INSTALLED ON ALL VALVES AND DUCTILE IRON FITTINGS INCLUDING RESTRAINTS AND HARNESSSES. TWELVE (12) POUND ZINC ANODES SHALL BE INSTALLED ON ALL STAINLESS STEEL FITTINGS AND SADDLES USED WITH PVC MAINS. ALL "TEES" USED WITH PVC MAINS SHALL BE DUCTILE IRON.
- PROPER ASSEMBLY OF GASKETED PVC PIPE JOINTS: THE MANUFACTURER'S INSERTION LINE OF GASKETED PVC PIPE JOINTS INDICATES THE MAXIMUM DEPTH OF INSERTION OF THE SPIGOT INTO THE BELL. AFTER ASSEMBLY OF THE JOINT, THE INSERTION LINE SHALL REMAIN VISIBLE. DUAL INSERTION LINES ON GASKETED PVC PIPE INDICATE THE MAXIMUM AND MINIMUM DEPTH OF INSERTION OF THE SPIGOT INTO THE BELL. THE CONTRACTOR SHALL NOT OVER INSERT OR OVER HOME THE SPIGOT INTO THE BELL OF PVC PIPE.
- ALL CHANGES IN HORIZONTAL OR VERTICAL DIRECTION OF PVC WATER PIPE SHALL BE MADE WITH STANDARD BENDS, 5-DEGREE SWEEPS OR HIGH DEFLECTION (HD) COUPLINGS. NO BENDING OF THE PIPE OR DEFLECTING OF PVC PIPE JOINTS IS PERMITTED. WHERE HIGH DEFLECTION COUPLINGS OR 5-DEGREE SWEEPS ARE PERMITTED, THE CONTRACTOR SHALL PROVIDE ONE FULL PIPE LENGTH (20-FOOT LONG) ON EITHER SIDE OF THE HIGH DEFLECTION COUPLING OR 5-DEGREE SWEEP. THE CONTRACTOR SHALL USE A VIBRATORY PLATE COMPACTOR OR OTHER APPROVED MEANS TO THOROUGHLY COMPACT THE #57 STONE ON BOTH SIDES OF THE HIGH DEFLECTION COUPLING OR 5-DEGREE SWEEP, TAKING CARE NOT TO USE COMPACTOR EQUIPMENT DIRECTLY OVER THE FITTING. PVC HIGH DEFLECTION COUPLINGS SHALL BE LIMITED TO A TOTAL DEFLECTION OF 3-DEGREES (1/4-DEGREE ON EITHER END OF THE COUPLING), SHALL BE RATED FOR A MINIMUM 200 PSI MEETING THE REQUIREMENTS OF AWWA C900. SHALL HAVE A MINIMUM LAY LENGTH OF 9-INCHES AND SHALL HAVE CENTER STOPS. PVC HIGH DEFLECTION COUPLINGS SHALL BE CERTAINTED PVC HIGH DEFLECTION (HD) STOP COUPLINGS OR EQUAL. FIVE DEGREE SWEEPS SHALL BE BELL BY SPIGOT, RATED FOR A MINIMUM 225 PSI, DR18 MEETING THE REQUIREMENTS OF AWWA C900 AND SHALL BE MULTI FITTINGS (PEX) BLUE BRUTE DR18 OR EQUAL.
- WHEN PVC HIGH DEFLECTION COUPLINGS OR PVC 5-DEGREE SWEEPS ARE USED TO FACILITATE CHANGES IN HORIZONTAL OR VERTICAL ALIGNMENTS OF AWWA C-900 PVC PIPELINES, THE CONTRACTOR SHALL INSTALL DEVICES FOR THE PREVENTION OF OVER-INSERTION OF THE PVC PIPE SPIGOTS OR FLAN ENDS INTO THE PUSH ON BELL JOINT ON BOTH SIDES OF THE HIGH DEFLECTION COUPLINGS AND 5 DEGREE SWEEPS. BELL STOPS SHALL BE PLACED AT THE PROPER INSERTION LINE FOR THE FITTING. THE BELL STOP SHALL BE MANUFACTURED OF DUCTILE IRON AND INCORPORATE AN EXPANSION RETENTION SPRING TO ALLOW FOR PIPE EXPANSION AND CONTRACTION. THE BELL STOPS SHALL BE SERIES 5000 MEGA-STOP, AS MANUFACTURED BY EBAA IRON, INC. OR APPROVED EQUAL.



VICINITY MAP
 SCALE: 1" = 1000'
 ADC: MAP 35, GRID A-1

GENERAL NOTES

- APPROXIMATE LOCATIONS OF EXISTING MAINS ARE SHOWN. THE CONTRACTOR SHALL TAKE ALL NECESSARY PRECAUTIONS TO PROTECT EXISTING MAINS AND SERVICES AND MAINTAIN UNINTERRUPTED SERVICE. ANY DAMAGE INCURRED SHALL BE REPAIRED IMMEDIATELY TO THE SATISFACTION OF THE ENGINEER AT THE CONTRACTOR'S EXPENSE.
- TOPOGRAPHIC FIELD SURVEYS WERE PERFORMED ON OR ABOUT OCTOBER, 2004 BY CHRISTOPHER CONSULTANTS, INC.
- HORIZONTAL AND VERTICAL SURVEY CONTROLS: THE COORDINATES SHOWN ON THE DRAWINGS ARE BASED ON MARYLAND STATE REFERENCE SYSTEM NAD '83/91 AS PROJECTED BY HOWARD COUNTY GEODETIC CONTROL STATIONS NO. 09H2 AND NO. 10G8. ALL VERTICAL CONTROLS ARE BASED ON NAVD '88. MILDENBERG, BOENDER AND ASSOCIATES, INC. SHALL PROVIDE DESCRIPTION OF VERTICAL CONTROL POINTS, I.E., IRON BARS, CROSS CUTS ON CONCRETE STRUCTURES, ETC).
- ALL PIPE ELEVATIONS SHOWN ARE INVERT ELEVATIONS UNLESS OTHERWISE NOTED ON THE PLANS.
- CLEAR ALL UTILITIES BY A MINIMUM OF 12 INCHES. CLEAR ALL POLES BY 5'-0" MINIMUM OR TUNNEL AS REQUIRED UNLESS OTHERWISE NOTED. THE OWNER HAS CONTACTED THE UTILITY COMPANIES AND HAS MADE ARRANGEMENTS FOR BRACING OF POLES AS SHOWN ON THE DRAWINGS. IN THE EVENT THE CONTRACTOR'S WORK REQUIRES THE BRACING OF ADDITIONAL POLES, ANY COST INCURRED BY THE OWNER FOR THE BRACING OF ADDITIONAL POLES OR DAMAGES SHALL BE DEDUCTED FROM MONIES OWED THE CONTRACTOR. THE CONTRACTOR SHALL COORDINATE WITH THE UTILITY COMPANIES TO SCHEDULE THE BRACING OF THE POLES.
- FOR DETAILS NOT SHOWN ON THE DRAWING, AND FOR MATERIALS AND CONSTRUCTION METHODS, USE HOWARD COUNTY DESIGN MANUAL, VOLUME IV, STANDARD SPECIFICATIONS AND DETAILS FOR CONSTRUCTION (LATEST EDITION). THE CONTRACTOR SHALL HAVE A COPY OF VOLUME IV ON THE JOB.
- WHERE TEST PITS HAVE BEEN MADE ON EXISTING UTILITIES, THEY ARE NOTED BY THE SYMBOL AT THE LOCATIONS OF THE TEST PITS. A NOTE OR NOTES CONTAINING THE RESULTS OF THE TEST PIT OR PITS IS INCLUDED ON THE DRAWINGS. EXISTING UTILITIES IN THE VICINITY OF THE PROPOSED WORK FOR WHICH TEST PITS HAVE NOT BEEN DUG SHALL BE LOCATED BY THE CONTRACTOR TWO WEEKS IN ADVANCE OF CONSTRUCTION OPERATIONS AT HIS OWN EXPENSE.
- THE CONTRACTOR SHALL NOTIFY THE FOLLOWING UTILITY COMPANIES OR AGENCIES AT LEAST FIVE WORKING DAYS BEFORE STARTING WORK SHOWN ON THESE PLANS:
 AT&T.....1-800-252-1133
 BOE (CONSTRUCTION SERVICES).....410-637-8713
 BOE (EMERGENCY).....410-685-0123
 BUREAU OF UTILITIES.....410-313-4900
 COLONIAL PIPELINE CO.....410-795-1390
 MISS UTILITY.....1-800-257-7777
 STATE HIGHWAY ADMINISTRATION.....410-531-5533
 VERIZON.....1-800-743-0033
- TREES AND SHRUBS ARE TO BE PROTECTED FROM DAMAGE TO THE MAXIMUM EXTENT. TREES AND SHRUBS LOCATED WITHIN THE CONSTRUCTION STRIP ARE NOT TO BE REMOVED OR DAMAGED BY THE CONTRACTOR.
- THE CONTRACTOR SHALL REMOVE TREES, STUMPS AND ROOTS ALONG THE LINE OF EXCAVATION. PAYMENT FOR SUCH REMOVAL SHALL BE INCLUDED IN THE UNIT PRICE BID FOR CONSTRUCTION OF THE MAIN.
- THE CONTRACTOR SHALL NOTIFY THE BUREAU OF HIGHWAYS, HOWARD COUNTY, AT (410)-313-7450 AT LEAST FIVE WORKING DAYS BEFORE OPEN CUTTING OR BORING/JACKING OF ANY COUNTY ROAD FOR LAYING WATER/SEWER MAINS OR HOUSE CONNECTIONS. THE APPROVAL OF THESE DRAWINGS WILL CONSTITUTE COMPLIANCE WITH DPW REQUIREMENTS PER SECTION 18.114(A) OF THE HOWARD COUNTY CODE.

PART II WATER

- ALL WATER MAINS SHALL BE D.I.P. CLASS 54 UNLESS OTHERWISE NOTED.
- TOPS OF ALL WATER MAINS SHALL HAVE A MINIMUM OF 3'-6" OF COVER UNLESS OTHERWISE NOTED.
- VALVES ADJACENT TO TEES SHALL BE STRAPPED TO TEES.
- ALL FITTINGS SHALL BE BUTTRESSED OR ANCHORED WITH CONCRETE IN ACCORDANCE WITH STANDARD DETAILS UNLESS OTHERWISE PROVIDED FOR ON THE DRAWINGS.
- FIRE HYDRANTS SHALL BE SET TO THE BURY LINE ELEVATIONS SHOWN ON THE DRAWINGS. ALL FIRE HYDRANTS SHALL BE INSTALLED IN ACCORDANCE WITH STANDARD DETAILS. THE SOIL AROUND THE FIRE HYDRANT SHALL BE COMPACTED IN ACCORDANCE WITH SECTION 1000 AND SECTION 1005 OF THE STANDARD SPECIFICATIONS.
- THE CONTRACTOR SHALL NOT OPERATE ANY WATER MAIN VALVES ON THE EXISTING WATER SYSTEM.
- TRACER WIRES AND CONTINUITY TEST STATIONS SHALL BE INSTALLED ON ALL DIP AND PVC WATER MAINS IN ACCORDANCE WITH THE HOWARD COUNTY DESIGN MANUAL.
- FOR PVC WATER MAINS, ALL RECORDS FOR THE QUALITY CONTROL AND QUALIFICATION TEST REQUIREMENTS NOTED IN SECTION 5.1 OF THE AWWA STANDARD C900 FOR PVC PRESSURE PIPE SHALL BE SUBMITTED WITH THE PIPE MATERIAL CERTIFICATIONS OR SHOP DRAWINGS PRIOR TO APPROVAL OF THE MATERIAL FOR USE. THE TEST RECORDS SHALL BE FOR THE PIPE TO BE INSTALLED UNDER THIS CONTRACT. ALL PVC PIPE SHALL CONTAIN MARKINGS TO ALLOW CROSS REFERENCING OF THE PIPE SUPPLIED TO THE TEST RECORDS RECEIVED.

TYPE OF BUILDING	RESIDENTIAL
No. OF LOTS	46 (45 LOTS / 1 CLUB)
No. OF WATER HOUSE CONNECTION	32
No. OF SEWER HOUSE CONNECTIONS	34
DRAINAGE AREA	PATAPSCO
TREATMENT PLANT	PATAPSCO

INDEX OF DRAWINGS

NO.	DESCRIPTION
1	COVER SHEET
2	WATER AND SEWER PLAN
3	SEWER PROFILE SHEET
4	WATER PROFILE SHEET

LEGEND

- EXISTING SEWER MAIN AND MANHOLE
- EXISTING WATER MAIN AND VALVE
- EXISTING FIRE HYDRANT
- PROPOSED WATER MAIN
- PROPOSED WATER HOUSE CONNECTION
- PROPOSED FIRE HYDRANT
- PROPOSED TEE
- PROPOSED BEND
- PROPOSED VALVE
- PROPOSED SEWER MAIN
- PROPOSED SEWER MANHOLE

DEVELOPER

ROCK BURN LLC
 6800 DEERPATH ROAD
 SUITE 100
 ELKBRIDGE, MD 21075
 (410)526-4030

EROSION AND SEDIMENT CONTROL SHALL BE PROVIDED UNDER SDP-13-085.

OWNER

PAULINE ANN THORNTON (PARCEL 52.54)
 6311 MONTGOMERY ROAD
 ELKBRIDGE, MD 21075
 (410)526-4030 (C/O ROCK BURN, LLC)

ROCK BURN LLC (PARCEL 53)
 6800 DEERPATH ROAD
 SUITE 100
 ELKBRIDGE, MD 21075
 (410)526-4030

**CONTRACT NO.: 14-4818-D
 ENCLAVE AT PARK FOREST
 LOTS 1 THRU 45
 WATER AND SEWER MAIN
 EXTENSION
 HOWARD COUNTY, MARYLAND
 DEPARTMENT OF PUBLIC WORKS**

THIS DEVELOPMENT PLAN IS APPROVED FOR SOIL EROSION AND SEDIMENT CONTROL BY THE HOWARD SOIL CONSERVATION DISTRICT.

 JOHN R. ROBERTS
 HOWARD SOIL CONSERVATION DISTRICT

PLAN REFERENCE NUMBERS:
 SDP-13-085
 SDP-13-007
 BA CASE 11-026C

I HEREBY CERTIFY THAT THESE DOCUMENTS WERE PREPARED OR APPROVED BY ME AND THAT I AM A DULY LICENSED PROFESSIONAL ENGINEER UNDER THE LAWS OF THE STATE OF MARYLAND. LICENSE NO.: 17942, EXPIRATION DATE: 9/3/16

 R. JACOB HIKMAT, P.E.

DEPARTMENT OF PUBLIC WORKS
 HOWARD COUNTY, MARYLAND

 STEVE C. COMBS
 CHIEF, BUREAU OF UTILITIES

DEPARTMENT OF PLANNING & ZONING
 HOWARD COUNTY, MARYLAND

 PAUL EDINGER (AS-BUILT)
 CHIEF, DEVELOPMENT ENGINEERING DIVISION

MILDENBERG, BOENDER & ASSOC., INC.
 Engineers Planners Surveyors
 7850-D Orace Drive, Columbia, Maryland 21044
 (410) 997-0286 Balt. (410) 997-0288 Pax.



engineering	JLS				
illustration	JLS				
approval	RH				
project	07-022	CLS	KU AS-BUILT		7/17/16
date	JUN 2014	BY	NO.	REVISION	DATE

COVER SHEET
 600' SCALE MAP NO. 37 BLOCK NO. 5

**ENCLAVE AT PARK FOREST
 LOTS 1 THRU 45**
 CONTRACT 14-4818-D
 TAX MAP 37 PARCELS 52, 53, 54
 FIRST ELECTION DISTRICT HOWARD COUNTY, MARYLAND

scale AS SHOWN
1 OF 4

WATER / SEWER MAIN TABULATION CHART		
APPURTENANCE	NORTHING	EASTING
SMH 100	564,127.4806	1,380,248.0214
SMH 101	564,149.2446	1,380,253.0840
SMH 102	564,179.4868	1,380,247.1434
SMH 103	564,232.2696	1,380,024.0131
SMH 104	564,207.3653	1,379,985.4201
SMH 105	563,855.0129	1,379,908.6858
SMH 200	563,845.6012	1,380,182.6951
SMH 201	563,820.0910	1,380,141.2823
SMH 202	563,873.3684	1,379,915.7669
CAP AND BUTTRISS REMOVAL AND HD COUPLING (WATER MAIN #1)	564,096.3060	1,380,308.6543
1/16 HB (WATER MAIN #1)	564,102.8583	1,380,299.3863
8" X 8" TEE (WATER MAIN #1)	564,113.2876	1,380,255.4528
8" GATE VALVE (WATER MAIN #1)	564,120.0043	1,380,257.1076
1/16 HB (WATER MAIN #1)	564,149.0645	1,380,263.9459
1/16 HB (WATER MAIN #1)	564,182.5331	1,380,258.5576
1/8 HB (WATER MAIN #1)	564,189.8806	1,380,254.0235
1/8 HB (WATER MAIN #1)	564,244.3132	1,380,023.5511
F.H.T.&V. (WATER MAIN #1 - FH #1)	564,238.4076	1,380,013.9871
FIRE HYDRANT #1 (WATER MAIN #1)	564,254.8984	1,380,003.8115
1/8 HB (WATER MAIN #1)	564,213.8552	1,379,974.2248
8" GATE VALVE (WATER MAIN #1)	564,023.8084	1,379,929.2158
8" X 8" TEE (WATER MAIN #1 - #2)	564,013.1433	1,379,926.6956
F.H.T.&V. (WATER MAIN #1 - FH #2)	563,980.1173	1,379,902.2739
FIRE HYDRANT #2 (WATER MAIN #1)	564,254.8984	1,380,003.8115
1/8 HB (WATER MAIN #1)	563,915.8297	1,379,903.6514
1/8 HB (WATER MAIN #1)	563,855.0290	1,379,941.1913
1/8 HB (WATER MAIN #1)	563,807.2705	1,380,143.3573
F.H.T.&V. (WATER MAIN #1 - FH #3)	563,830.2784	1,380,180.6415
FIRE HYDRANT #3 (WATER MAIN #1)	563,814.0808	1,380,190.6061
1/8 HB (WATER MAIN #1)	563,835.7937	1,380,189.5791
8" GATE VALVE (WATER MAIN #1)	564,105.0139	1,380,253.4903
8" GATE VALVE (WATER MAIN #2)	564,014.6575	1,379,919.6948
1/8 HB (WATER MAIN #2)	564,038.9531	1,379,817.7029
1/8 HB (WATER MAIN #2)	564,048.3825	1,379,811.8843
2" HD COUPLING	564,056.2611	1,379,778.6137
2" HD COUPLING	564,063.5984	1,379,741.5496
1/8 HB (WATER MAIN #2)	564,066.2433	1,379,725.1088
1/8 HB (WATER MAIN #2)	564,049.7298	1,379,702.4442
1/8 HB (WATER MAIN #2)	563,996.6694	1,379,683.2414
8" GATE VALVE (WATER MAIN #2)	563,915.7055	1,379,653.3312
CAP AND BUTTRISS REMOVAL AND HD COUPLING (WATER MAIN #2)	563,906.5582	1,379,659.9497

APPURTENANCE	NORTHING	EASTING
1/8 H.B. (WATER MAIN #2)	564,053.792	1,379,708.492
1/32 H.B.	563,943.784	1,379,691.862
1/8 H.B.	563,941.964	1,379,691.832
1/8 H.B.	563,932.032	1,379,669.502

ALL SEWER CLEANOUTS LOCATED WITHIN DRIVEWAY PAVEMENT ARE TO HAVE BRASS TRAFFIC-RATED TOPS THAT ARE FLUSH WITH PAVEMENT.

REFER TO HOWARD COUNTY STD. DETAILS G-8.21 AND W-1.15 FOR CONTINUITY TEST STATION DETAILS.

OUTSIDE METER SETTINGS FOR 1" METERS SHALL BE USED.

SEE PROFILES FOR SIZES OF STORM PIPES AT CROSSINGS WITH WATER AND SEWER.

WATER HOUSE CONNECTION AS-BUILT LOCATION TABLE

LOT	ADDRESS	LOCATION DIMENSION 1	LOCATION DIMENSION 2
1	25' TO SMH 104	35' TO 1-252	
2	25' TO SMH 104	35' TO 1-252	
3	57' TO SMH 104	87' TO 1-252	
4	57' TO SMH 104	87' TO 1-252	
5	132' TO FH #2	108' TO SMH 104	
6	84' TO FH #2	156' TO SMH 104	
7	84' TO FH #2	156' TO SMH 104	
8	21' TO SMH 105	81' TO FH #2	
9	21' TO SMH 105	81' TO FH #2	
10	18' TO SMH 105	101' TO FH #2	
11	18' TO SMH 105	99' TO FH #2	
12	30' TO SMH 202	89' TO SMH 105	
13	30' TO SMH 202	89' TO SMH 105	
14	84' TO SMH 202	123' TO SMH 201	
15	84' TO SMH 202	123' TO SMH 201	
16	134' TO SMH 202	73' TO SMH 201	
17	134' TO SMH 202	73' TO SMH 201	
18	34' TO SMH 201	61' TO FH #3	
19	34' TO SMH 201	61' TO FH #3	
20	63' TO SMH 202	153' TO SMH 201	
21	63' TO SMH 202	153' TO SMH 201	
22	107' TO SMH 202	115' TO SMH 201	
23	165' TO SMH 202	144' TO SMH 201	
24	186' TO SMH 202	58' TO SMH 201	
25	186' TO SMH 202	58' TO SMH 201	
26	48' TO SMH 200	28' TO SMH 201	
27	104' TO SMH 200	224' TO SMH 100	
28	134' TO SMH 200	194' TO SMH 100	
29	174' TO SMH 200	176' TO SMH 100	
30	96' TO SMH 100	127' TO SMH 101	
31	24' TO SMH 102	38' TO SMH 101	
32	68' TO SMH 102	96' TO SMH 101	
33	68' TO SMH 102	96' TO SMH 101	
34	9' TO 1-353	30' TO 1-352	
35	1' TO 1-353	21' TO 1-352	
36	12' TO SMH 103	32' TO 1-255	
37	12' TO SMH 103	22' TO 1-255	
38	91' TO SMH 104	71' TO 1-255	
39	120' TO FH #2	139' TO SMH 104	
40	120' TO FH #2	139' TO SMH 104	
41	71' TO FH #2	196' TO SMH 104	
42	71' TO FH #2	196' TO SMH 104	
43	0' TO 1-352	31' TO 1-353	
44	35' TO FH #1	21' TO SMH 103	
45	35' TO FH #1	21' TO SMH 103	
CLUB		113' TO SMH 102	126' TO SMH 103

SEWER HOUSE CONNECTION AS-BUILT LOCATION TABLE

LOT	ADDRESS	LOCATION DIMENSION 1	LOCATION DIMENSION 2
1		SMH 103 - 40'	SMH 104 - 34'
2		SMH 104 - 34'	1251 - 58'
3		SMH 104 - 36'	1251 - 60'
4		SMH 104 - 89'	SMH 105 - 24.8'
5		SMH 104 - 94'	SMH 105 - 24.2'
6		SMH 104 - 131'	SMH 105 - 20.4'
7		SMH 104 - 183'	SMH 105 - 14.5'
8		SMH 105 - 30'	FH #2 - 66'
9		SMH 105 - 24'	FH #2 - 78'
10		SMH 105 - 24'	FH #2 - 88'
11		SMH 105 - 22'	SMH 202 - 15'
12		SMH 202 - 28'	SMH 201 - 23.4'
13		SMH 202 - 37'	SMH 201 - 20.5'
14		SMH 202 - 67'	SMH 201 - 1.75'
15		SMH 202 - 103'	SMH 201 - 138'
16		SMH 202 - 137'	SMH 201 - 103'
17		SMH 202 - 173'	SMH 201 - 69'
18		SMH 202 - 209'	SMH 201 - 38'
19		SMH 201 - 33'	SMH 202 - 53'
20		SMH 105 - 28'	SMH 202 - 25'
21		SMH 202 - 86'	SMH 201 - 150'
22		SMH 202 - 90'	SMH 201 - 146'
23		SMH 202 - 153'	SMH 201 - 83'
24		SMH 202 - 157'	SMH 201 - 73'
25		SMH 202 - 212'	SMH 201 - 27'
26		SMH 202 - 217'	SMH 201 - 24'
27		SMH 201 - 112'	SMH 100 - 178'
28		SMH 201 - 117'	SMH 100 - 174'
29		SMH 201 - 183'	SMH 100 - 107'
30		SMH 201 - 188'	SMH 100 - 102'
31		SMH 102 - 45'	SMH 103 - 130'
32		SMH 102 - 48'	SMH 103 - 186'
33		SMH 102 - 85'	SMH 103 - 149'
34		SMH 102 - 117'	SMH 103 - 117'
35		SMH 102 - 168'	SMH 103 - 66'
36		SMH 102 - 174'	SMH 103 - 60'
37		SMH 104 - 106'	SMH 202 - 233'
38		SMH 104 - 112'	SMH 202 - 233'
39		SMH 104 - 165'	SMH 202 - 173'
40		SMH 104 - 168'	SMH 202 - 176'
41		SMH 104 - 228'	SMH 202 - 116'
42		SMH 102 - 180'	SMH 103 - 48'
43		SMH 102 - 190'	SMH 103 - 54'
44		SMH 103 - 28'	SMH 104 - 58'
45		SMH 102 - 106'	SMH 103 - 133'
CLUB			

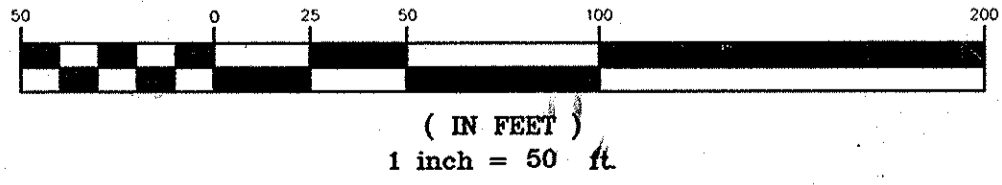
DEVELOPER

ROCK BURN LLC
8800 DEERPATH ROAD
SUITE 100
ELK RIDGE, MD 21075
(410)526-4030

OWNER
PAULINE ANN THORNTON (PARCEL 52,54)
6311 MONTGOMERY ROAD
ELK RIDGE, MD 21075
(410)526-4030 (C/O ROCK BURN, LLC)

ROCK BURN LLC (PARCEL 53)
8800 DEERPATH ROAD
SUITE 100
ELK RIDGE, MD 21075
(410)526-4030

GRAPHIC SCALE



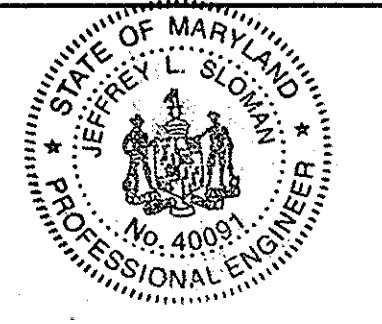
I HEREBY CERTIFY THAT THESE DOCUMENTS WERE PREPARED OR APPROVED BY ME AND THAT I AM A DULY LICENSED PROFESSIONAL ENGINEER UNDER THE LAWS OF THE STATE OF MARYLAND. LICENSE NO.: 40091, EXPIRATION DATE: 2/13/15

6/17/14
JEFFREY SLOMAN, P.E.

DEPARTMENT OF PUBLIC WORKS
HOWARD COUNTY, MARYLAND

DEPARTMENT OF PLANNING & ZONING
HOWARD COUNTY, MARYLAND

MILDENBERG, BOENDER & ASSOC., INC.
Engineers Planners Surveyors
7850-B Orace Drive, Columbia, Maryland 21044
(410) 997-0296 Ball (410) 997-0298 Fax



engineering	JLS	illustration	JLS	approval	RJH	project	07-022	date	JUN 2014
client	CIS	revision	NO.	revision	NO.	revision	NO.	revision	NO.
revision	NO.	revision	NO.	revision	NO.	revision	NO.	revision	NO.

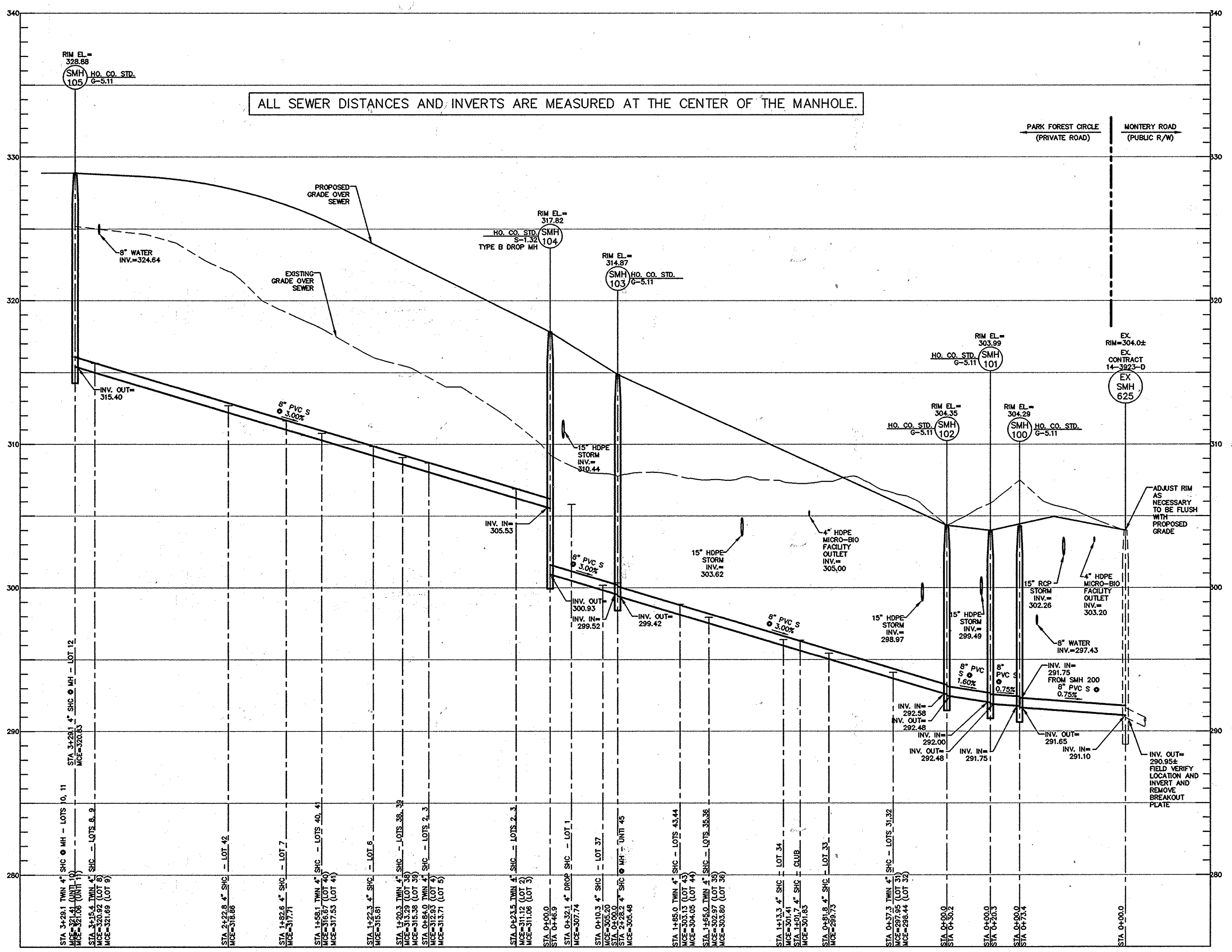
WATER AND SEWER PLAN

600' SCALE MAP NO. 37 BLOCK NO. 5

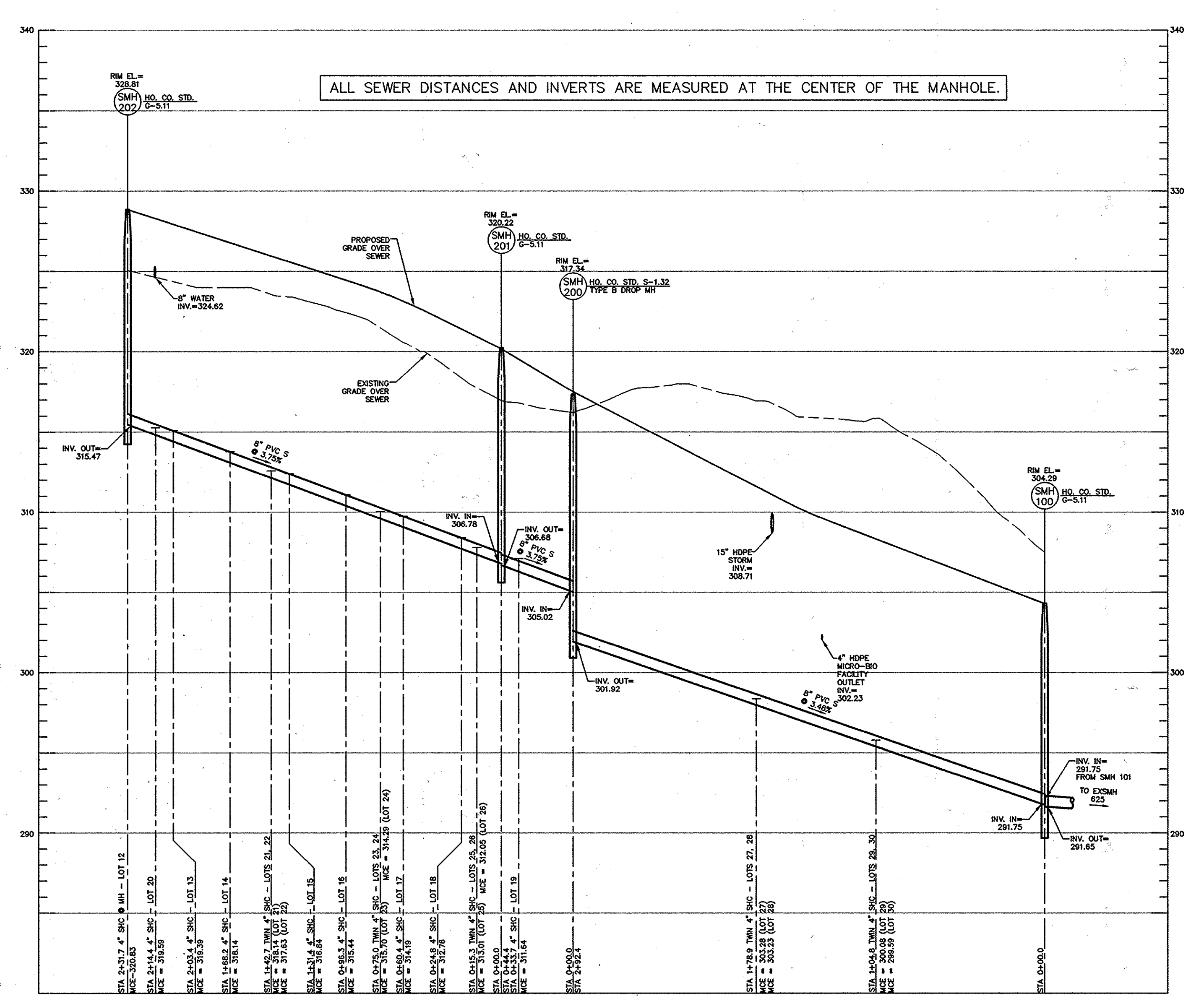
ENCLAVE AT PARK FOREST
LOTS 1 THRU 45
CONTRACT 14-4818-D
TAX MAP 37 PARCELS 52, 53, 54
FIRST ELECTION DISTRICT HOWARD COUNTY, MARYLAND

scale 1"=50'
2 of 4

P: 12004-07-022 BUCK (DWG) SDP 07-022-MAY 2013 - MS.dwg



SEWER PROFILE - SMH 105 TO EXSMH 625
SCALE: 1"=40' HORIZ
1"=4' VERT



SEWER PROFILE - SMH 202 TO SMH 100
SCALE: 1"=40' HORIZ
1"=4' VERT

LOT	INV. @ R/W (OR EASEMENT)	MCE	SLOPE
1	305.81 (DROP SHC)	307.74	2.0%
2	306.88 (TWIN)	311.12	2.0%
3	306.88 (TWIN)	311.06	2.0%
4	308.70 (TWIN)	312.93	2.0%
5	308.70 (TWIN)	313.71	3.0%
6	309.85 (TWIN)	315.81	4.0%
7	311.65 (TWIN)	317.71	4.0%
8	315.64 (TWIN)	320.92	3.0%
9	315.64 (TWIN)	321.69	2.0%
10	316.08 (TWIN)	321.41	2.0%
11	316.08 (TWIN)	321.06	2.0%
12	316.11 (TWIN)	320.83	2.0%
13	315.10 (TWIN)	319.39	2.0%
14	313.78 (TWIN)	318.14	2.0%
15	312.40 (TWIN)	316.84	2.0%
16	311.08 (TWIN)	315.44	2.0%
17	309.75 (TWIN)	314.19	2.0%
18	308.40 (TWIN)	312.76	2.0%
19	307.11 (TWIN)	311.64	2.0%
20	315.27 (TWIN)	319.59	2.0%
21	312.58 (TWIN)	318.14	3.5%
22	312.58 (TWIN)	317.63	3.0%
23	310.04 (TWIN)	315.70	3.5%

LOT	INV. @ R/W (OR EASEMENT)	MCE	SLOPE
24	310.04 (TWIN)	314.29	2.0%
25	307.80 (TWIN)	313.01	3.0%
26	307.80 (TWIN)	312.05	2.0%
27	298.36 (TWIN)	303.56	3.0%
28	298.36 (TWIN)	302.61	2.0%
29	295.78 (TWIN)	300.08	2.0%
30	295.78 (TWIN)	299.59	1.5%
31	294.11 (TWIN)	297.95	1.5%
32	294.11 (TWIN)	298.44	2.0%
33	295.44 (TWIN)	299.73	2.0%
34	296.39 (TWIN)	301.41	3.0%
35	297.94 (TWIN)	302.97	3.0%
36	297.94 (TWIN)	303.80	4.0%
37	300.17 (TWIN)	305.20	3.0%
38	309.08 (TWIN)	313.29	2.0%
39	309.08 (TWIN)	315.38	4.0%
40	310.76 (TWIN)	316.67	4.0%
41	310.76 (TWIN)	317.53	4.5%
42	312.70 (TWIN)	318.86	4.0%
43	298.85 (TWIN)	303.13	2.0%
44	298.85 (TWIN)	304.05	3.0%
45	300.34 (TWIN)	305.48	3.0%
CLUB	296.35 (TWIN)	300.44	2.0%

I HEREBY CERTIFY THAT THESE DOCUMENTS WERE PREPARED OR APPROVED BY ME AND THAT I AM A DULY LICENSED PROFESSIONAL ENGINEER UNDER THE LAWS OF THE STATE OF MARYLAND. LICENSE NO.: 40091, EXPIRATION DATE: 2/13/15
 6/17/14
 JEFFREY SLOMAN, P.E.

DEVELOPER

ROCK BURN LLC
 6800 DEERPATH ROAD
 SUITE 100
 ELKRIDGE, MD 21075
 (410)526-4030

OWNER

PAULINE ANN THORNTON (PARCEL 52.54) ROCK BURN LLC (PARCEL 53)
 6311 MONTGOMERY ROAD 6800 DEERPATH ROAD
 ELKRIDGE, MD 21075 ELKRIDGE, MD 21075
 (410)526-4030 (C/O ROCK BURN, LLC) (410)526-4030

DEPARTMENT OF PUBLIC WORKS
 HOWARD COUNTY, MARYLAND
 Chief, Bureau of Utilities

DEPARTMENT OF PLANNING & ZONING
 HOWARD COUNTY, MARYLAND
 Chief, Development Engineering Division

7-11-14

MILDENBERG, BOENDER & ASSOC., INC.
 Engineers Planners Surveyors
 7350-B Grace Drive, Columbia, Maryland 21044
 (410) 997-0286 Ball (410) 997-0286 Fax



engineering	JLS				
illustration	JLS				
approval	RJH				
project	07-022	CLS	KEI AS-BUILT		7/17/15
date	JUN 2014	BY	NO.	REVISION	DATE

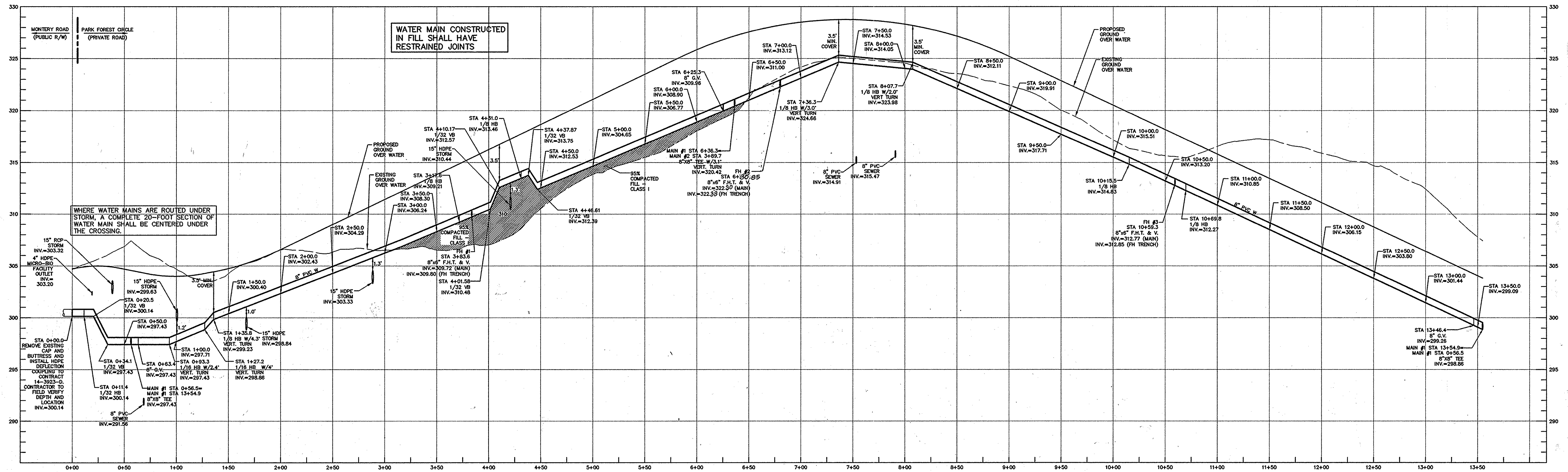
SEWER PROFILE SHEET

600' SCALE MAP NO. 37 BLOCK NO. 5

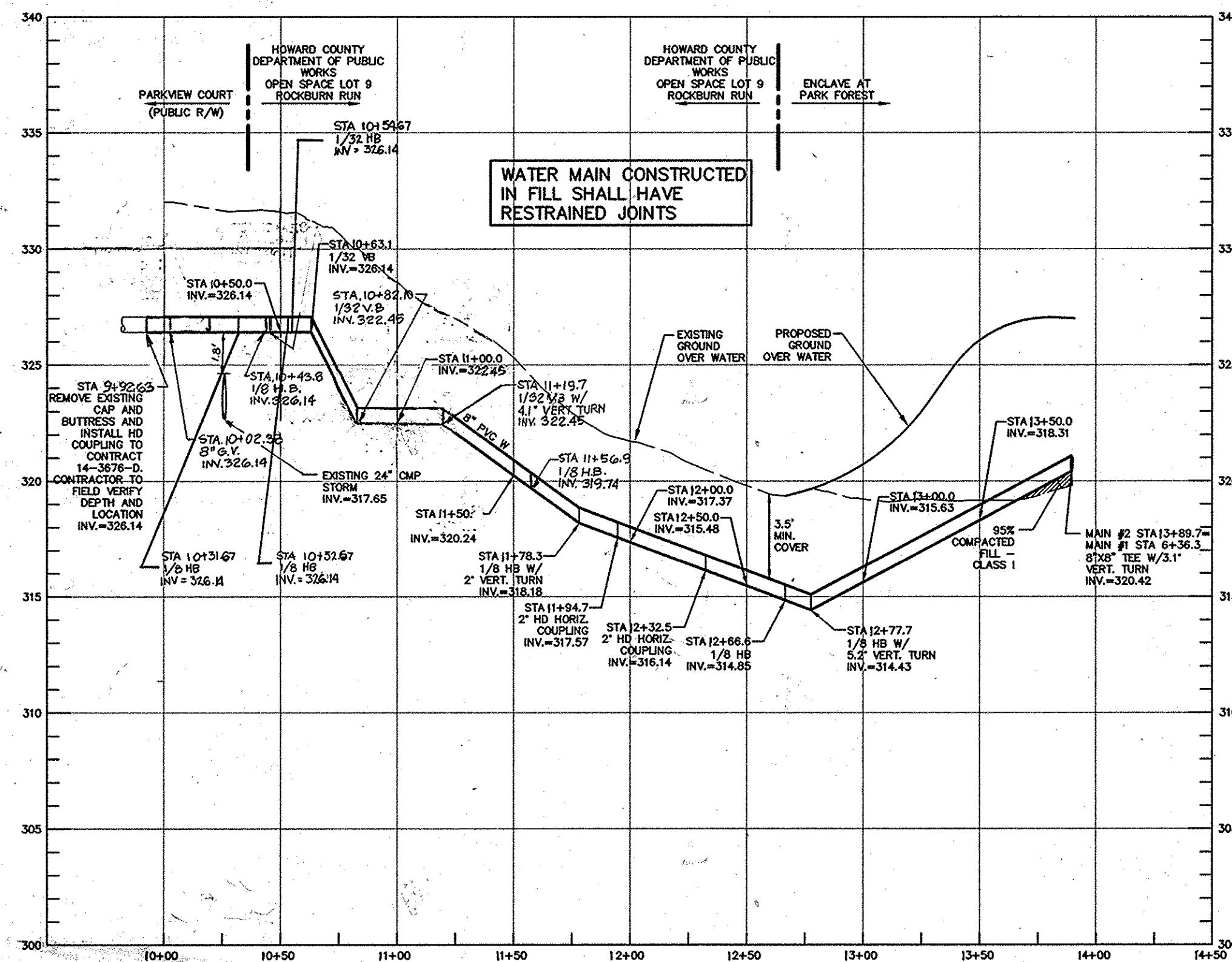
ENCLAVE AT PARK FOREST
 LOTS 1 THRU 45
 CONTRACT 14-4818-D
 TAX MAP 37 PARCELS 52, 53, 54
 FIRST ELECTION DISTRICT HOWARD COUNTY, MARYLAND

scale AS SHOWN
3 OF 4

P:\2004\07-022 BUCK (copy) (SPP)\07-022-MAY 2013 - MS.dwg



WATER MAIN #1 PROFILE
SCALE: 1"=50' HOR
1"=5' VERT



WATER MAIN #2 PROFILE
SCALE: 1"=50' HOR
1"=5' VERT

I HEREBY CERTIFY THAT THESE DOCUMENTS
WERE PREPARED OR APPROVED BY ME AND
THAT I AM A DULY LICENSED PROFESSIONAL
ENGINEER UNDER THE LAWS OF THE STATE OF
MARYLAND. LICENSE NO.: 40091, EXPIRATION
DATE: 2/13/15

Jeffrey L. Sloman
6/17/14
JEFFREY SLOMAN, P.E.

DEVELOPER

ROCK BURN LLC
6800 DEERPATH ROAD
SUITE 100
ELK RIDGE, MD 21075
(410)526-4030

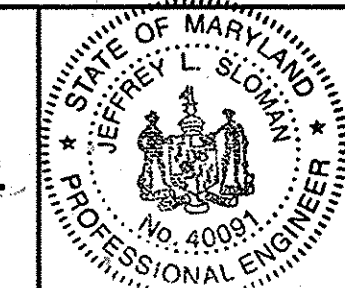
OWNER

PAULINE ANN THORNTON (PARCEL 52.54) ROCK BURN LLC (PARCEL 53)
6311 MONTGOMERY ROAD 6800 DEERPATH ROAD
ELK RIDGE, MD 21075 SUITE 100
(410)526-4030 (C/O ROCK BURN, LLC) ELK RIDGE, MD 21075
(410)526-4030

DEPARTMENT OF PUBLIC WORKS
HOWARD COUNTY, MARYLAND

DEPARTMENT OF PLANNING & ZONING
HOWARD COUNTY, MARYLAND

**MILDENBERG,
BOENDER & ASSOC., INC.**
Engineers Planners Surveyors
7350-B Orace Drive, Columbia, Maryland 21044
(410) 997-0286 Ball (410) 997-0288 Fax



engineering	JLS				
illustration	JLS				
approval	RJH	CLD	KLI AS-BUILT	7/17/15	7/17/15
project	07-022	MBA 2	REV. WATER MAIN #2	8/20/14	
date	JUN 2014	MBA 1	REV. VERTICAL ALIGNMENT OF WATER MAIN #2, RELOCATE F.H. #2		
		BY NO.	REVISION	DATE	

WATER PROFILE SHEET

60' SCALE MAP NO. 37 BLOCK NO. 5

**ENCLAVE AT PARK FOREST
LOTS 1 THRU 45**

CONTRACT 14-4818-D
TAX MAP 37 PARCELS 52, 53, 54
FIRST ELECTION DISTRICT HOWARD COUNTY, MARYLAND

scale AS SHOWN

4 OF 4