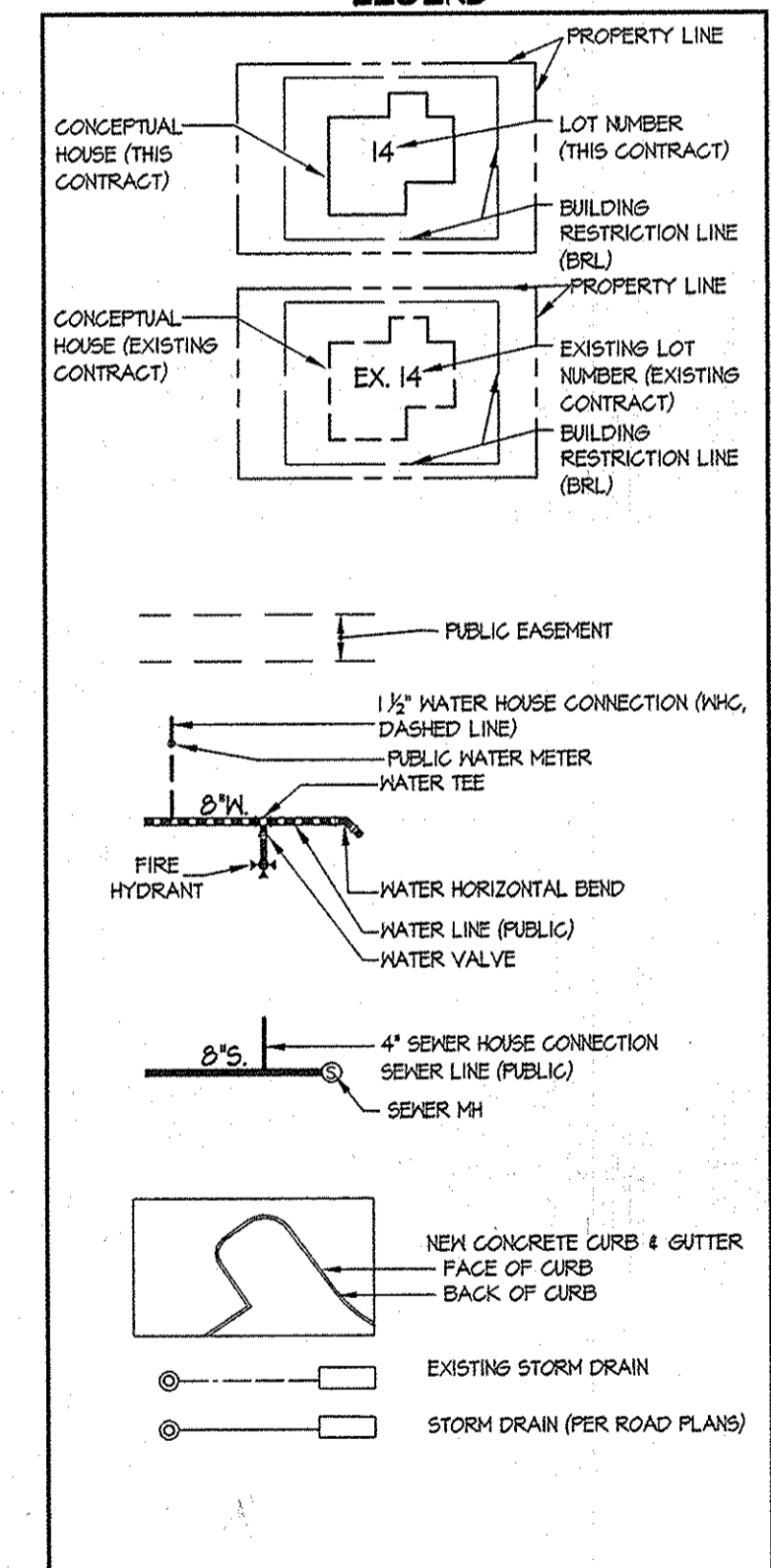


QUANTITIES				
ITEMS	QUANTITIES ESTIMATED	AS-BUILT		
		QUANTITIES	TYPE	MANUFACTURER/SUPPLIER
8" WATER MAIN (C100 DR18 PVC)	1284 LF	1284	PVC-C 900	NATIONAL PIPE / FERGUSON
1" 1/2" MHC	344 LF	277	TYPE "K" COPPER	MUELLER CO. / FERGUSON
8" 1/2" H.B.	1	9	M.J.	TYLER UNION BONDY / FERGUSON
8" 1/2" H.B.	3	3	M.J.	"
8" 1/2" H.B.	5	5	M.J.	"
8" x 6" F.H.T.	2	2	M.J.	"
6" VALVE	2	2	GATE VALVE	MUELLER CO. / FERGUSON
8" VALVE	1	1	GATE VALVE	"
FIRE HYDRANT	2	2	HOWARD Co. A-425	"
8" SEWER MAIN	1,189 LF	951	PVC-SDR 35	FERGUSON
4" SHC	425 LF	425	"	FERGUSON
4" MANHOLE	10	10	PRECAST CONCRETE	CONTRACTOR PRECAST CORR
15" HIGH DEFLECTION COUPLER	1	1	PVC	NORTH AMERICAN SPECIALTY / FERGUSON
3.0" HIGH DEFLECTION COUPLER	3	3	PVC	"
5" SWEEP BEND	3	3	PVC	"

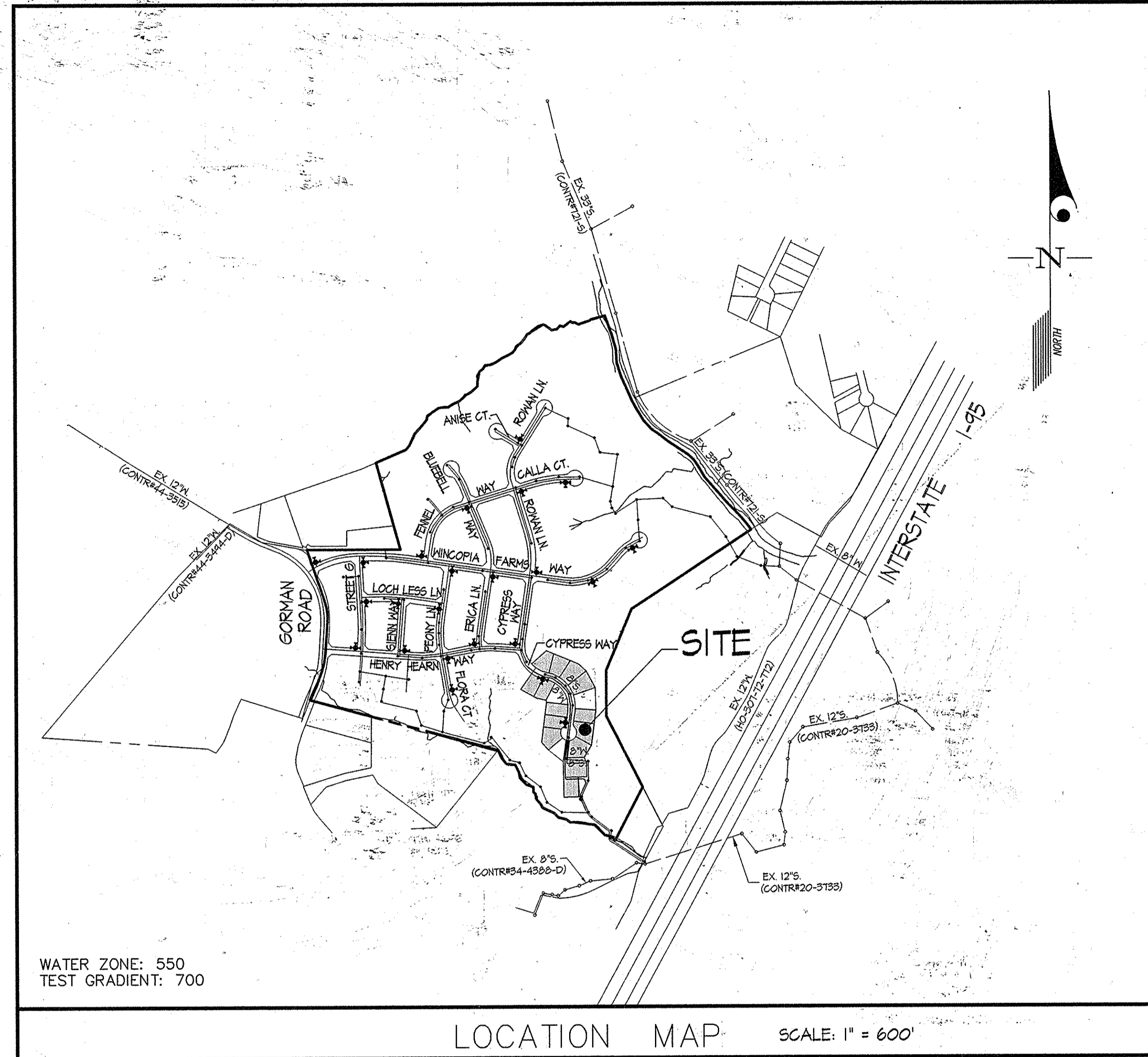
NAME OF UTILITY CONTRACTOR: CONSOLIDATED CONST. SERVICES INC.



SURVEY AND DRAFTING DIV. CHECKBOX: AS-BUILT DATE:

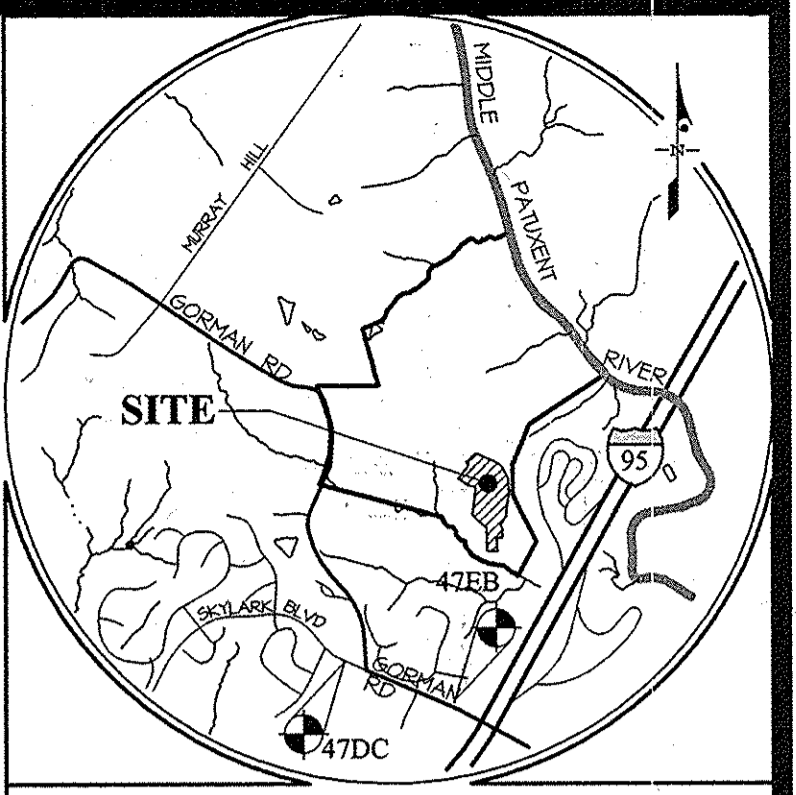
WINCOPIA FARMS PUBLIC WATER & SEWER CONSTRUCTION ORDER	
CONTRACT NUMBER	CONSTRUCTION ORDER
24-4691-D	1
24-4811-D	4
24-4812-D	2
24-4813-D	5
24-4814-D	6
24-4815-D	3

- SHEET INDEX
- TITLE SHEET
  - WATER & SEWER EXTENSION PLAN
  - WATER & SEWER PROFILE PLAN
  - WATER & SEWER PROFILE PLAN



WATER ZONE: 550  
TEST GRADIENT: 700  
LOCATION MAP SCALE: 1" = 600'

TYPE OF BUILDING	RESIDENTIAL
NUMBER OF LOTS	14
NUMBER OF S.H.C.'s	14
NUMBER OF W.H.C.'s	14
AREA OF COMMERCIAL LOT/PARCEL	N/A
SEWER SHED	MIDDLE PATUXENT
PUMPING STATION	LITTLE PATUXENT RECLAMATION PLANT



VICINITY MAP SCALE: 1" = 2,000'

BENCHMARKS			
47DC	ELEV. 343.18	N = 536.615.00	E = 1255.619.00
47EB	ELEV. = 354.23	N = 536.212.71	E = 1354.833.51

ADC MAP: 40 GRID: B-3

GENERAL NOTES  
Revised - October 2013

- Part I
- Approximate locations of existing mains are shown. The contractor shall take all necessary precautions to protect existing mains and services and maintain uninterrupted service. Any damage incurred shall be repaired immediately to the satisfaction of the Engineer at the contractor's expense.
  - Topographic AIR surveys were performed on DECEMBER, 2008 by MCKENZIE SNYDER.
  - Horizontal and Vertical Survey Controls:  
The coordinates shown on the drawings are based on Maryland State Reference System NAD '83/141 as projected by Howard County Geodetic Control Stations No. 47DC and No. 47EB.  
All vertical controls are based on NAVD '88. Vertical controls provided on the drawings are STANDARD DISCS ON CONCRETE MONUMENTS.
  - All pipe elevations shown are invert elevations unless otherwise noted on the plans.
  - Clear all utilities by a minimum of 12 inches. Clear all poles by 5'-0" minimum or tunnel as required unless otherwise noted. The owner has contacted the utility companies and has made arrangements for bracing of poles as shown on the drawings. In the event the contractor's work requires the bracing of additional poles, any cost incurred by the owner for the bracing of additional poles or damages shall be deducted from monies owed the contractor. The contractor shall coordinate with the utility companies to schedule the bracing of the poles.
  - For details not shown on the drawing, and for materials and construction methods, use Howard County Design Manual, Volume IV, Standard Specifications and Details for Construction (Latest Edition). The contractor shall have a copy of Volume IV on the job.
  - Where test pits have been made on existing utilities, they are noted by the symbol  $\Phi$  at the locations of the test pits. A note or notes containing the results of the test pit or pits is included on the drawings. Existing utilities in the vicinity of the proposed work for which test pits have not been dug shall be located by the contractor two weeks in advance of construction operations at his own expense.
  - The contractor shall notify the following utility companies or agencies at least five working days before starting work shown on these plans:  
AT&T.....1-800-252-1133  
BGE (Construction Services).....410-637-8713  
BGE (Emergency).....410-685-0123  
Bureau of Utilities.....410-313-4400  
Colonial Pipeline Co.....410-745-1340  
Miss Utility.....1-800-251-7711  
State Highway Administration.....410-531-5533  
Verizon.....1-800-743-0033
  - Trees and shrubs are to be protected from damage to the maximum extent. Trees and shrubs located within the construction strip are not to be removed or damaged by the contractor.
  - The contractor shall remove trees, stumps and roots along the line of excavation. Payment for such removal shall be included in the unit price bid for construction of the main.
  - The contractor shall notify the Bureau of Highways, Howard County, at (410)-313-1450 at least five working days before open cutting or boring/jacking of any County road for laying water/sewer mains or house connections. The approval of these drawings will constitute compliance with DFM requirements per Section 15.114(a) of the Howard County Code.

- Part II WATER
- All water mains shall be ANWVA standard C900 DR18 PVC unless otherwise noted.
  - Tops of all water mains shall have a minimum of 3'-6" of cover unless otherwise noted.
  - Valves adjacent to trees shall be strapped to trees.
  - All fittings shall be buttressed or anchored with concrete in accordance with Standard Details unless otherwise provided for on the drawings.
  - Fire hydrants shall be set to the bury line elevations shown on the drawings. All fire hydrants shall be installed in accordance with Standard Details. The soil around the fire hydrant shall be compacted in accordance with Section 1000 and Section 1005 of the Standard Specifications.
  - The contractor shall not operate any water main valves on the existing water system.
  - Tracer wires and continuity test stations shall be installed on all DIP and PVC water mains in accordance with the Howard County Design Manual.
  - For PVC water mains, all records for the Quality Control and Qualification Test Requirements noted in Section 5.1 of the ANWVA Standard C900 for PVC pressure pipe shall be submitted with the pipe material certifications or shop drawings prior to approval of the material for use. The test records shall be for the pipe to be installed under this contract. All PVC pipe shall contain markings to allow cross referencing of the pipe supplied to the test records received.
  - Unless otherwise noted on the plans or in the specifications sacrificial anodes shall be installed on all valves and metallic fittings used with PVC water mains in accordance with Volume IV, Standard Specifications and Details for Construction, Seventeen (17) pound Magnesium anodes shall be installed on all valves and ductile iron fittings including restraints and harnesses. Twelve (12) pound Zinc anodes shall be installed on all stainless steel fittings and saddles used with PVC mains. All gaskets used with PVC mains shall be ductile iron.
  - Proper Assembly of Gasketed PVC Pipe Joints: The manufacturer's insertion line of gasketed PVC pipe joints indicates the maximum depth of insertion of the spigot into the bell. After assembly of the joint, the insertion line shall remain visible. Dual insertion lines on gasketed PVC pipe indicate the maximum and minimum depth of insertion of the spigot into the bell. The contractor shall not over insert or over home the spigot into the bell of PVC pipe.
  - All changes in horizontal or vertical direction of PVC water pipe shall be made with standard bends, 5-degree sweeps or high deflection (HD) couplings. No bending of the pipe or deflecting of PVC pipe joints is permitted. Where high deflection couplings or 5-degree sweeps are permitted, the contractor shall provide one full pipe length (20-foot long) on either side of the high deflection coupling or 5-degree sweep. The contractor shall use a vibratory plate compactor or other approved means to thoroughly compact the #51 stone on both sides of the high deflection coupling or 5-degree sweep, taking care not to use compaction equipment directly over the fitting.

PVC high deflection couplings shall be limited to a total deflection of 3-degrees (1 1/2-degree on either end of the coupling), shall be rated for a minimum 200 psi meeting the requirements of ANWVA C900, shall have a minimum lay length of 9-inches and shall have center stops. PVC High deflection couplings shall be CertainTeed PVC High Deflection (HD) Stop Couplings or equal. Five degree sweeps shall be bell by spigot, rated for a minimum 225 psi, DR18 meeting the requirements of ANWVA C900 and shall be Multi Fittings (MF) Blue Brute DR18 or equal.

12. When PVC high deflection couplings or PVC 5-degree sweeps are used to facilitate changes in horizontal or vertical alignments of ANWVA C-900 PVC pipelines, the contractor shall install devices for the prevention of over-insertion of the PVC pipe spigots or plain ends into the push on bell joint on both sides of the high deflection couplings and 5 degree sweeps. Bell stops shall be placed at the proper insertion line for the fitting. The bell stop shall be manufactured of ductile iron and incorporate an expansion retention spring to allow for pipe expansion and contraction. The bell stops shall be Series 5000 Mega-Stop, as manufactured by EBAA Iron, Inc. or approved equal.

- Part III SEWER
- All sewer mains shall be D.I.P. or P.V.C., unless otherwise noted.
  - All manholes shall be 4'-0" inside diameter unless otherwise noted.
  - Force mains shall be D.I.P. only.
  - Manholes shown with 12" and 16" walls are for brick manholes only.
  - Manholes designated M.T. in plan and profile shall have watertight frame and cover, Standard Detail 65.52. Where watertight manhole frames and covers are used, set top of frame 1'-6" above finished grade unless otherwise noted on the drawings.
  - House(s) with the symbol "C.N.S." indicates that the cellar cannot be served.

SEDIMENT CONTROL MEASURES WILL BE IMPLEMENTED IN ACCORDANCE WITH F-13-103, SECTION 308 OF THE SPECIFICATIONS AT FINAL PLAN STAGE.

THIS DEVELOPMENT PLAN IS APPROVED FOR SOIL EROSION AND SEDIMENT CONTROL BY THE HOWARD SOIL CONSERVATION DISTRICT.

APPROVED: *John R. Branton* 11/26/13  
DATE: 11/26/13  
HOWARD S.C.D.

DEPARTMENT OF PUBLIC WORKS  
HOWARD COUNTY, MARYLAND

*John R. Branton*  
DATE: 11/26/13  
CHIEF, BUREAU OF UTILITIES

DEPARTMENT OF ZONING  
AND PLANNING  
HOWARD COUNTY, MARYLAND

*John R. Branton*  
DATE: 12-9-13  
CHIEF, DEVELOPMENT ENGINEERING DIVISION

GLWGUTSCHICK LITTLE & WEBER, P.A.  
CIVIL ENGINEERS, LAND SURVEYORS, LAND PLANNERS, LANDSCAPE ARCHITECTS  
3909 NATIONAL DRIVE - SUITE 250 - BURTONSVILLE OFFICE PARK  
BURTONSVILLE, MARYLAND 20866  
TEL: 301-421-4024 BALT: 410-880-1820 DC/VA: 301-989-2524 FAX: 301-421-4186

DATE: OCT., 2013  
G.L.W. No. 08052

PROFESSIONAL CERTIFICATION

I HEREBY CERTIFY THAT THESE PLANS WERE PREPARED OR APPROVED BY ME, AND THAT I AM A DULY LICENSED PROFESSIONAL ENGINEER UNDER THE LAWS OF THE STATE OF MARYLAND, LICENSE NO. 12975, EXP. DATE: MAY 26, 2014

11-12-13

BY	NO	REVISION	DATE
+	1	Revised water perchance to PVC	11-20-14

TITLE SHEET

600' SCALE MAP NO. 47 BLOCK NO. 2,3,8&9 ZONING: R-ED

WINDCOPIA FARMS  
PHASE 6  
LOTS 1 THRU 220 &  
OPEN SPACE LOTS 221 THRU 256  
L 11388 F 25  
HOWARD COUNTY, MARYLAND  
ELECTION DISTRICT NO. 6  
CONTRACT NO. 24-4815-D TAX MAP 47-3

PREPARED FOR:  
BEAZER HOMES CORP.  
8965 GUILFORD RD., SUITE 290  
COLUMBIA, MD 21046  
ATTN: BRIAN KNAUFF  
410-381-3222

AS BUILT  
BY: DFI DATE: 11-10-2014

SCALE: AS SHOWN  
SHEET: 1 OF 4

L:\CAD\DRAWINGS\08052-1418-WAT-SEW\PHASE 6\08052-1418-C900.dwg, PLOTTED: 10/29/2013 11:52 AM, LAST SAVED: 10/29/2013 11:52 AM, PLOTTER: HP DesignJet 5000, PLOTTER DRIVER: HPGL-ET



MH No.	STATION	OFFSET
61	1+87	1.7' RIGHT
71	2+67	8.2' RIGHT
72	3+25	1.0' RIGHT
73	4+11	9.0' RIGHT
74	4+81	8.7' RIGHT

STATION	FITTING	LOCATION
(13) 19+42	8" 1/2 HB	N. 538,663.76 E. 1,354,431.23
(14) 20+01	8" 1/2 HB	N. 538,633.54 E. 1,354,482.02
(15) 20+34	8" x 6" FHT	N. 538,622.57 E. 1,355,013.00
(16) 20+48	8" 1/2 HB	N. 538,617.43 E. 1,355,026.11
(17) 20+88	8" 1/2 HB	N. 538,612.24 E. 1,355,065.30
(18) 21+32	8" 1/2 HB	N. 538,584.44 E. 1,355,103.54
(19) 21+41	8" 1/2 HB	N. 538,544.45 E. 1,355,147.46
(20) 22+34	8" 1/2 HB	N. 538,511.45 E. 1,355,176.21
(21) 23+00	8" 1/2 HB	N. 538,452.35 E. 1,355,141.22
(22) 23+58	8" 1/2 HB	N. 538,345.24 E. 1,355,144.21
(23) 24+48	8" x 6" FHT	N. 538,305.44 E. 1,355,182.64
(24) 26+61	8" 5" SWEET	N. 538,044.83 E. 1,355,155.48
(25) 27+10	8" 3.0" HDC	N. 538,045.43 E. 1,355,153.64
(26) 28+26	8" 1/2 HB	N. 531,924.76 E. 1,355,155.71
(27) 28+35	8" 1/2 HB	N. 531,923.34 E. 1,355,162.36
(28) 29+35	8" 3.0" HDC	N. 531,925.13 E. 1,355,265.05
(29) 29+51	8" 1/2 HB	N. 531,924.53 E. 1,355,278.10
(30) 29+62	8" 1/2 HB	N. 531,914.73 E. 1,355,288.32
(31) 29+86	8" 1/2 HB	N. 531,841.36 E. 1,355,296.40
(32) 30+85	8" 1/2 HB	N. 531,807.87 E. 1,355,254.38
(33) 31+17	8" 5" SWEET	N. 531,771.57 E. 1,355,265.34

FH	LOCATION
Y	N. 538,306.93 E. 1,355,171.55
Z	N. 538,614.56 E. 1,355,010.16

FROM	TO	DISTANCE
WNC	MHLA	34.00'
WNC	MHLA	52.00'
WNC	MHLA	84.00'
WNC	MHLA	44.00'
WNC	MHLA	48.00'
WNC	MHLA	18.00'

FROM	TO	DISTANCE
WNC	MHLA	52.00'
WNC	MHLA	84.00'
WNC	MHLA	44.00'
WNC	MHLA	48.00'
WNC	MHLA	18.00'

FROM	TO	DISTANCE
WNC	MHLA	52.00'
WNC	MHLA	84.00'
WNC	MHLA	44.00'
WNC	MHLA	48.00'
WNC	MHLA	18.00'

FROM	TO	DISTANCE
WNC	MHLA	52.00'
WNC	MHLA	84.00'
WNC	MHLA	44.00'
WNC	MHLA	48.00'
WNC	MHLA	18.00'

FROM	TO	DISTANCE
WNC	MHLA	52.00'
WNC	MHLA	84.00'
WNC	MHLA	44.00'
WNC	MHLA	48.00'
WNC	MHLA	18.00'

MH No.	NORTH	EAST
62	538,208	1,355,182

MH No.	NAD '83/'91 COORDINATES
63	537,204 1,355,264
64	537,404 1,355,313
65	538,044 1,355,310

FROM	TO	DISTANCE
WNC	MHLA	34.00'
WNC	MHLA	52.00'
WNC	MHLA	84.00'
WNC	MHLA	44.00'
WNC	MHLA	48.00'
WNC	MHLA	18.00'

FROM	TO	DISTANCE
WNC	MHLA	34.00'
WNC	MHLA	52.00'
WNC	MHLA	84.00'
WNC	MHLA	44.00'
WNC	MHLA	48.00'
WNC	MHLA	18.00'

FROM	TO	DISTANCE
WNC	MHLA	34.00'
WNC	MHLA	52.00'
WNC	MHLA	84.00'
WNC	MHLA	44.00'
WNC	MHLA	48.00'
WNC	MHLA	18.00'

FROM	TO	DISTANCE
WNC	MHLA	34.00'
WNC	MHLA	52.00'
WNC	MHLA	84.00'
WNC	MHLA	44.00'
WNC	MHLA	48.00'
WNC	MHLA	18.00'

FROM	TO	DISTANCE
WNC	MHLA	34.00'
WNC	MHLA	52.00'
WNC	MHLA	84.00'
WNC	MHLA	44.00'
WNC	MHLA	48.00'
WNC	MHLA	18.00'

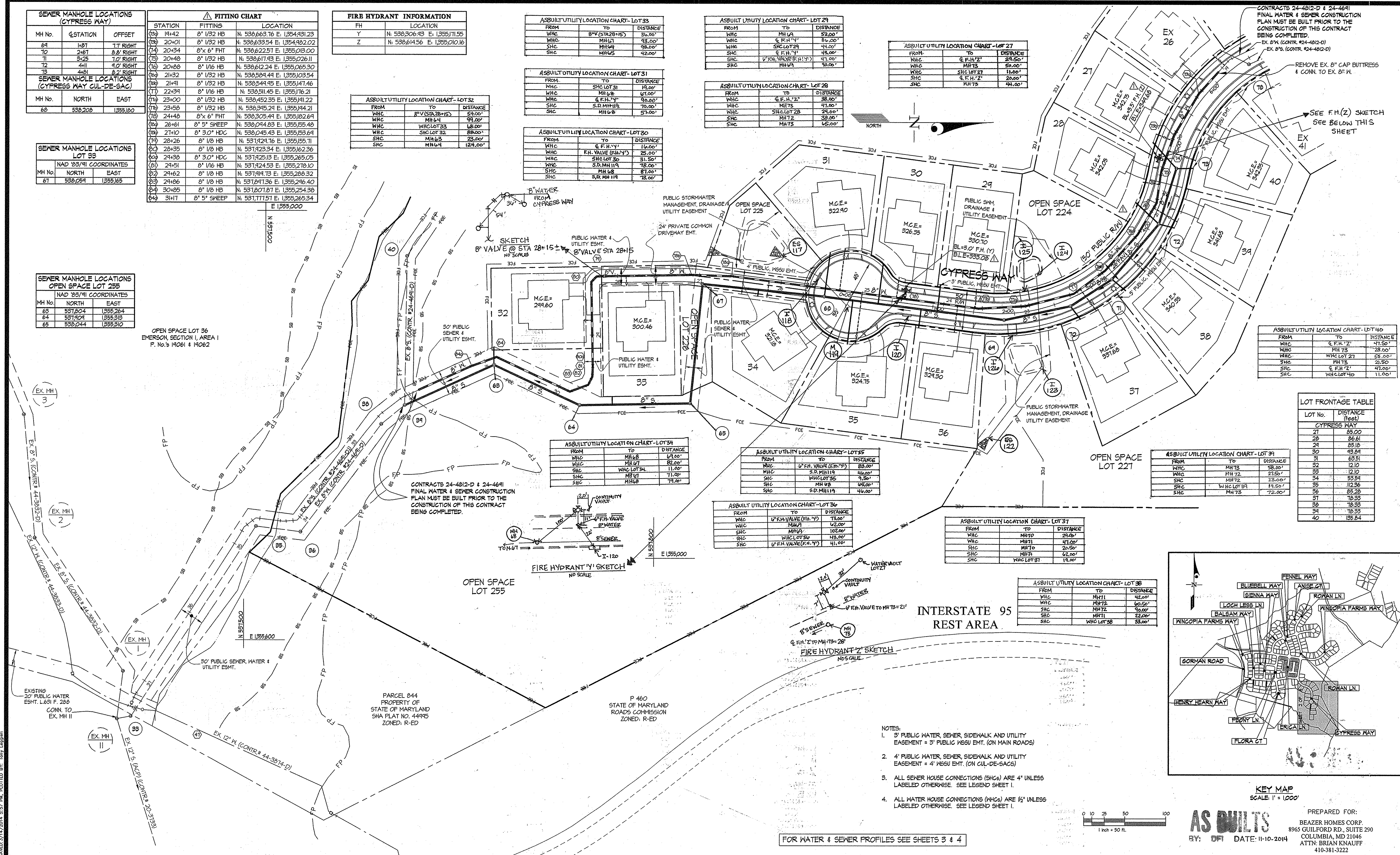
FROM	TO	DISTANCE
WNC	MHLA	34.00'
WNC	MHLA	52.00'
WNC	MHLA	84.00'
WNC	MHLA	44.00'
WNC	MHLA	48.00'
WNC	MHLA	18.00'

MH No.	NORTH	EAST
63	537,204	1,355,264
64	537,404	1,355,313
65	538,044	1,355,310

OPEN SPACE LOT 36  
EMERSON SECTION 1 AREA 1  
P. No.'s 14061 & 14062

FROM	TO	DISTANCE
WNC	MHLA	47.50'
WNC	MHLA	28.00'
WNC	MHLA	55.00'
WNC	MHLA	47.00'
WNC	MHLA	11.00'

LOT No.	DISTANCE (feet)
21	25.00
22	25.61
23	25.19
24	25.19
25	25.19
26	25.19
27	25.19
28	25.19
29	25.19
30	25.19
31	25.19
32	25.19
33	25.19
34	25.19
35	25.19
36	25.19
37	25.19
38	25.19
39	25.19
40	25.19

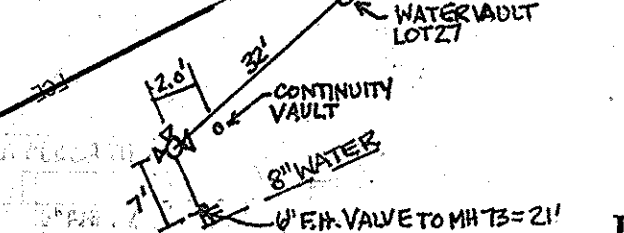
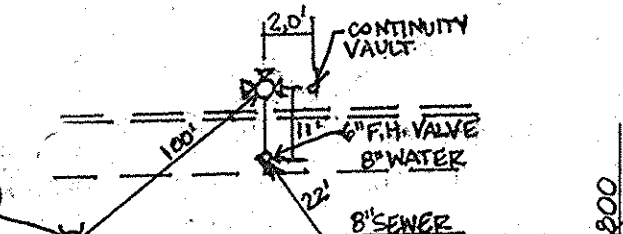


FROM	TO	DISTANCE
WNC	MHLA	49.00'
WNC	MHLA	82.00'
WNC	MHLA	11.00'
WNC	MHLA	71.00'
WNC	MHLA	79.00'

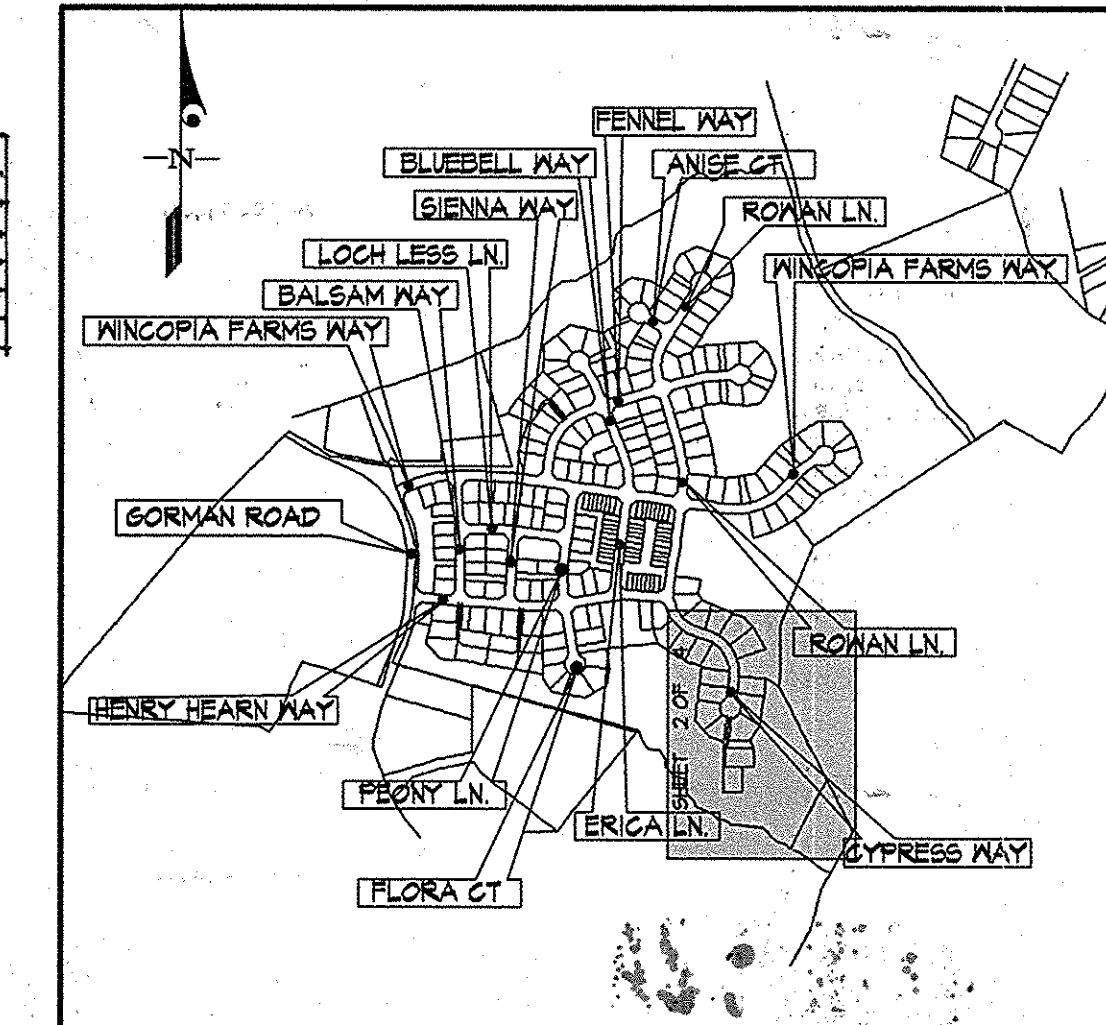
FROM	TO	DISTANCE
WNC	MHLA	83.00'
WNC	MHLA	46.00'
WNC	MHLA	46.00'

FROM	TO	DISTANCE
WNC	MHLA	29.40'
WNC	MHLA	17.00'
WNC	MHLA	23.00'
WNC	MHLA	14.50'
WNC	MHLA	72.00'

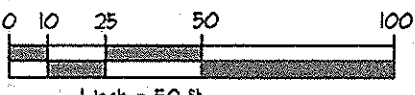
FROM	TO	DISTANCE
WNC	MHLA	42.00'
WNC	MHLA	60.50'
WNC	MHLA	18.00'
WNC	MHLA	22.00'
WNC	MHLA	33.00'



INTERSTATE 95 REST AREA



- NOTES:
- 3" PUBLIC WATER, SEWER, SIDEWALK AND UTILITY EASEMENT = 3' PUBLIC M&S EMT. (ON MAIN ROADS)
  - 4" PUBLIC WATER, SEWER, SIDEWALK AND UTILITY EASEMENT = 4' M&S EMT. (ON CUL-DE-SACS)
  - ALL SEWER HOUSE CONNECTIONS (SHCs) ARE 4" UNLESS LABELED OTHERWISE. SEE LEGEND SHEET 1.
  - ALL WATER HOUSE CONNECTIONS (WHCs) ARE 1/2" UNLESS LABELED OTHERWISE. SEE LEGEND SHEET 1.



FOR WATER & SEWER PROFILES SEE SHEETS 3 & 4

KEY MAP  
SCALE: 1" = 1,000'

**AS BUILTS**

PREPARED FOR:  
BEAZER HOMES CORP.  
8965 GUILFORD RD., SUITE 290  
COLUMBIA, MD 21046  
ATTN: BRIAN KNAUFF  
410-381-3222

DEPARTMENT OF PUBLIC WORKS  
HOWARD COUNTY, MARYLAND

DATE: 5/22/14

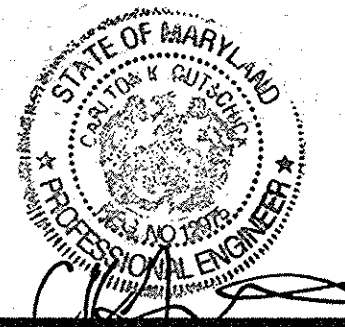
DEPARTMENT OF PLANNING AND ZONING  
HOWARD COUNTY, MARYLAND

DATE: 4/4/14

**GLW GUTSCHICK LITTLE & WEBER, PA.**  
CIVIL ENGINEERS, LAND SURVEYORS, LAND PLANNERS, LANDSCAPE ARCHITECTS  
3909 NATIONAL DRIVE - SUITE 250 - BURTOWNSVILLE OFFICE PARK  
BURTOWNSVILLE, MARYLAND 20886  
TEL: 301-421-4024 FAX: 301-889-2524

DATE: OCT. 2013

PROFESSIONAL CERTIFICATION  
I HEREBY CERTIFY THAT THESE PLANS WERE PREPARED OR APPROVED BY ME, AND THAT I AM A DULY LICENSED PROFESSIONAL ENGINEER UNDER THE LAWS OF THE STATE OF MARYLAND, LICENSE NO. 12975, EXP. DATE: MAY 26, 2014.



AWL	REVISION	DATE
BY NO	REVISED WATER PER CHANGE TO PVC	02/11/14

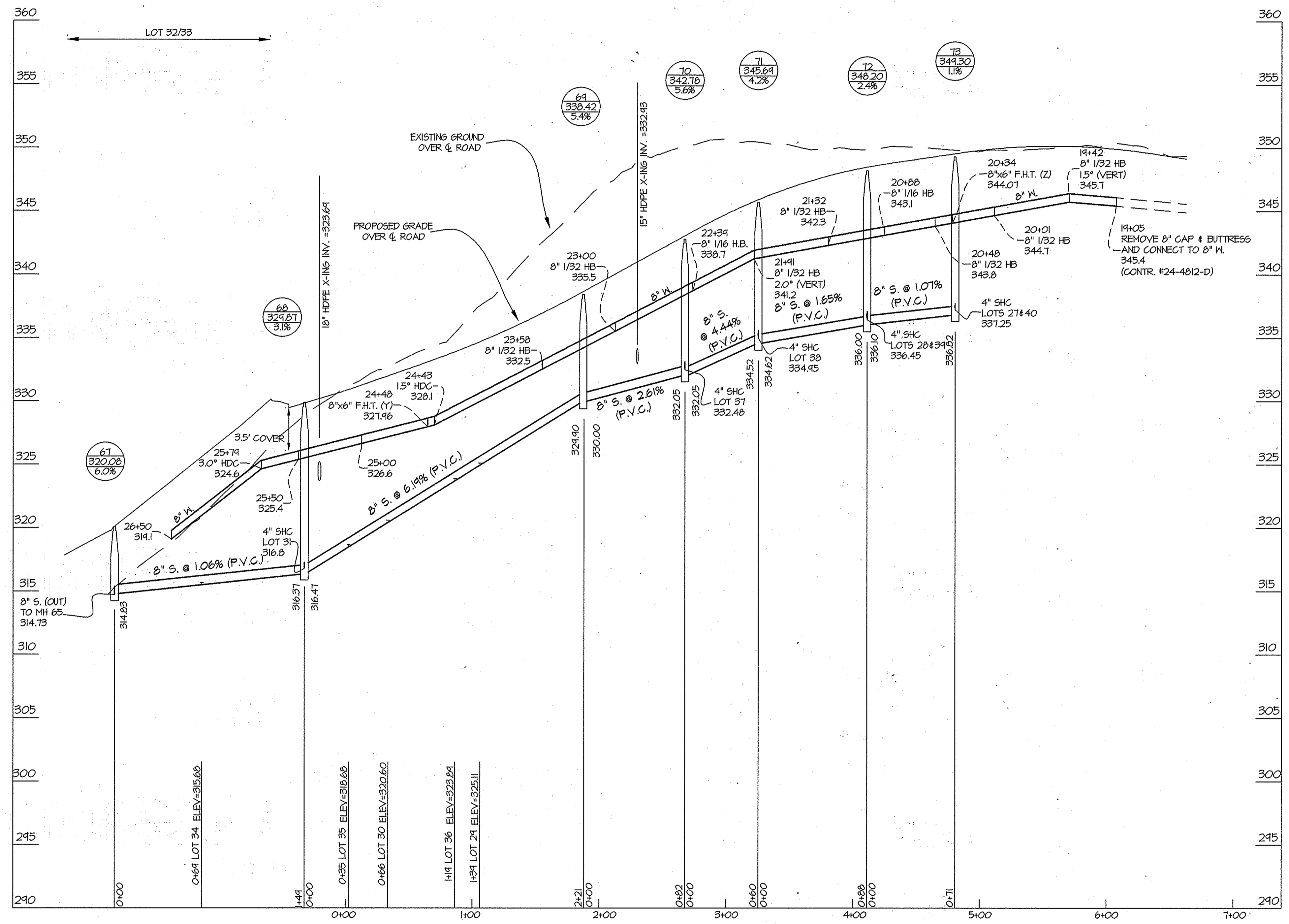
WATER and SEWER EXTENSION PLAN

600' SCALE MAP NO. 47 BLOCK NO. 2,3,8&9

**WINCOPIA FARMS**  
PHASE 6  
LOTS 1 THRU 220 &  
OPEN SPACE LOTS 221 THRU 256  
L 11388 F. 723  
HOWARD COUNTY, MARYLAND  
ELECTION DISTRICT No. 6  
CONTRACT No. 24-4815-D TAX MAP 47-3

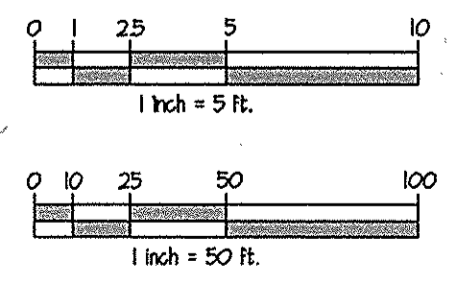
SCALE: 1" = 50'  
SHEET: 2 OF 4





FOR WATER AND SEWER PLAN VIEW SEE SHEET 2

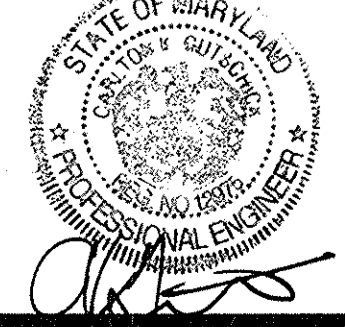
PROFILE SCALES:  
 HOR. 1" = 50'  
 VERT. 1" = 5'



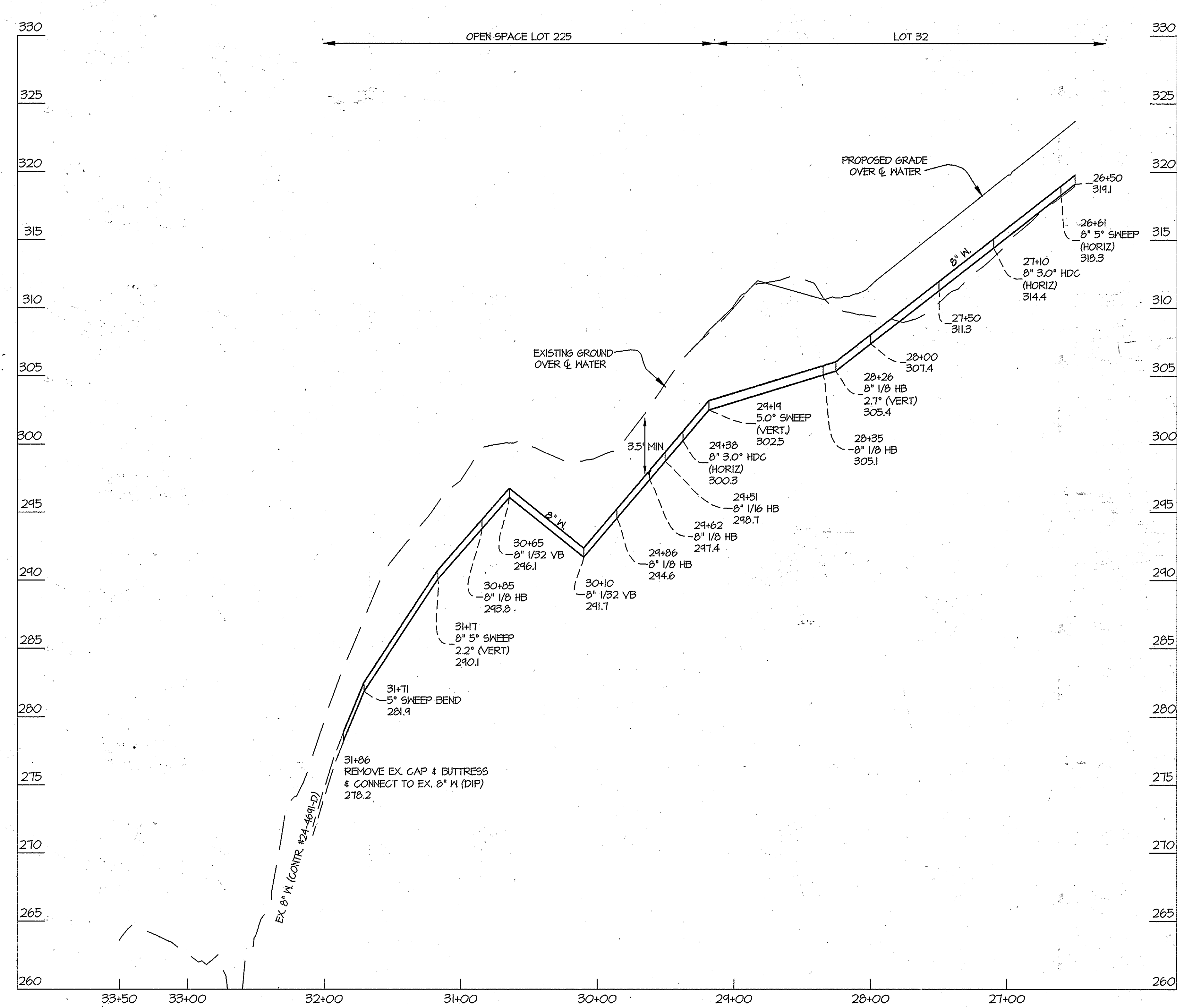
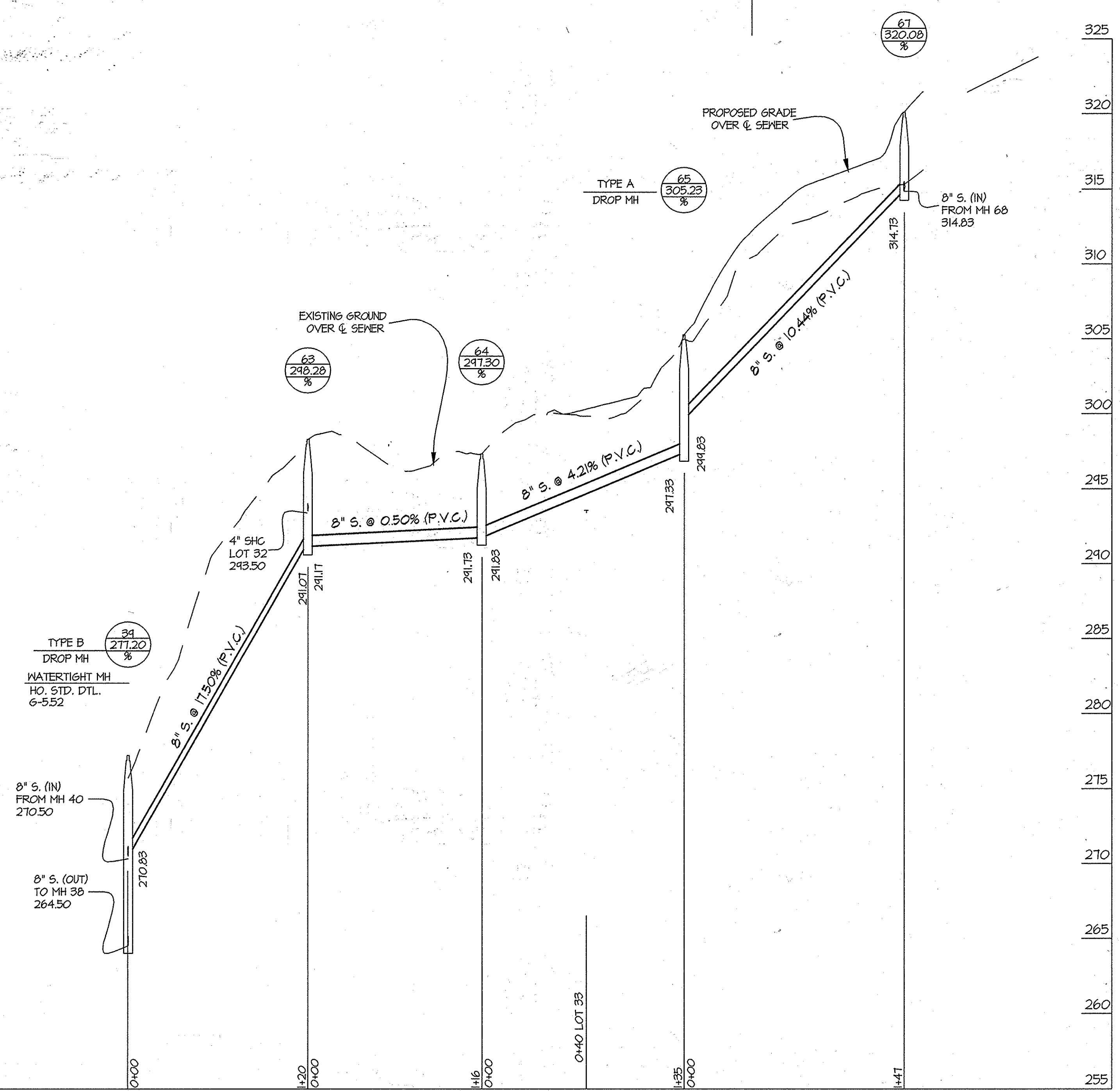
**AS BUILTS**  
 DATE: 11-10-2014

PREPARED FOR:  
 BEAZER HOMES CORP.  
 8965 GUILFORD RD., SUITE 290  
 COLUMBIA, MD 21046  
 ATTN: BRIAN KNAUFF  
 410-381-3222

L:\CADD\PROJECTS\08052\08052-PUB-WATER-SEWER\PLANS\08052-PUB-WATER-SEWER-PROF-3-4.dwg  
 PLOTTED: 3/18/2014 4:02 PM, LAST SAVED: 3/14/2014 5:57 PM, PLOTTED BY: Tony Leggett

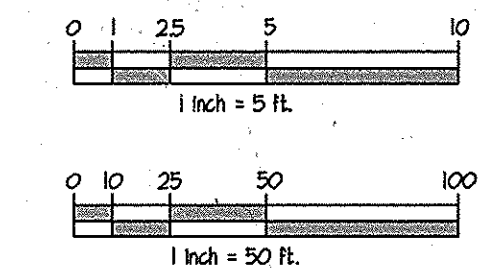
DEPARTMENT OF PUBLIC WORKS HOWARD COUNTY, MARYLAND  <i>Steve Clemen</i> CHIEF, BUREAU OF UTILITIES	DEPARTMENT OF PLANNING AND ZONING HOWARD COUNTY, MARYLAND  <i>Chad Cochran</i> CHIEF, DEVELOPMENT ENGINEERING DIVISION	<b>GLWGUTSCHICK LITTLE &amp; WEBER, P.A.</b> CIVIL ENGINEERS, LAND SURVEYORS, LAND PLANNERS, LANDSCAPE ARCHITECTS 3909 NATIONAL DRIVE - SUITE 250 - BURTONSVILLE OFFICE PARK BURTONSVILLE, MARYLAND 20886 TEL: 301-421-4024 BAL: 410-880-1820 DC/VA: 301-889-2524 FAX: 301-421-4186	DATE OCT., 2013  G.L.W. No. 08052	PROFESSIONAL CERTIFICATION I HEREBY CERTIFY THAT THESE PLANS WERE PREPARED OR APPROVED BY ME, AND THAT I AM A DULY LICENSED PROFESSIONAL ENGINEER UNDER THE LAWS OF THE STATE OF MARYLAND. LICENSE NO. 12875 EXP. DATE: MAY 26, 2014  	<table border="1" style="width: 100%; border-collapse: collapse;"> <tr> <td style="width: 5%;">AWL</td> <td style="width: 5%;">▲</td> <td style="width: 70%;">REVISED WATER PER CHANGE TO PVC</td> <td style="width: 15%;">02/11/14</td> </tr> <tr> <td>BY</td> <td>NO</td> <td>REVISION</td> <td>DATE</td> </tr> </table>	AWL	▲	REVISED WATER PER CHANGE TO PVC	02/11/14	BY	NO	REVISION	DATE	<b>WATER and SEWER PROFILES</b>  600' SCALE MAP NO. 47    BLOCK NO. 2,3,8&9    ZONING: R-ED	<b>WINCOPIA FARMS</b> PHASE 6 LOTS 1 THRU 220 & OPEN SPACE LOTS 221 THRU 256 L-11388 F. 725 HOWARD COUNTY, MARYLAND ELECTION DISTRICT No. 6 <b>CONTRACT No. 24-4815-D</b> TAX MAP: 47-3	SCALE AS SHOWN  SHEET 3 of 4
AWL	▲	REVISED WATER PER CHANGE TO PVC	02/11/14													
BY	NO	REVISION	DATE													

OPEN SPACE LOT 225      OPEN SPACE LOT 226



FOR WATER AND SEWER PLAN VIEW SEE SHEET 2

PROFILE SCALES:  
HOR. 1" = 50'  
VERT. 1" = 5'



AS BUILT'S  
BY DATE: 11-10-2014

PREPARED FOR:  
BEAZER HOMES CORP.  
8965 GUILFORD RD., SUITE 290  
COLUMBIA, MD 21046  
ATTN: BRIAN KNAUFF  
410-381-3222

L:\CADD\PROJECTS\08052-PHASE 6-SEWER PLAN\WORKSPACE\AS BUILT'S - PHASE 6 - SEWER PLAN.PLT, PLOTTED: 10/21/2014 4:00 PM, LAST SAVED: 10/17/2014 8:37 PM, PLOTTED BY: TONY GIBSON

DEPARTMENT OF PUBLIC WORKS HOWARD COUNTY, MARYLAND  <i>Steve Green</i> CHIEF, BUREAU OF UTILITIES      DATE	DEPARTMENT OF PLANNING AND ZONING HOWARD COUNTY, MARYLAND  <i>Chris Ecker</i> CHIEF, DEVELOPMENT ENGINEERING DIVISION      DATE	<b>GLWGUTSCHICK LITTLE &amp; WEBER, P.A.</b> CIVIL ENGINEERS, LAND SURVEYORS, LAND PLANNERS, LANDSCAPE ARCHITECTS 3909 NATIONAL DRIVE - SUITE 250 - BURTONSVILLE OFFICE PARK BURTONSVILLE, MARYLAND 20886 TEL: 301-421-4024 FAX: 301-421-4186	DATE OCT., 2013  G.L.W. No. 08052	PROFESSIONAL CERTIFICATION I HEREBY CERTIFY THAT THESE PLANS WERE PREPARED OR APPROVED BY ME, AND THAT I AM A DULY LICENSED PROFESSIONAL ENGINEER UNDER THE LAWS OF THE STATE OF MARYLAND, LICENSE NO. 12975. EXP. DATE: MAY 26, 2014		<table border="1" style="width:100%; border-collapse: collapse;"> <tr> <td>AWL</td> <td>1</td> <td>REVISED WATER PROFILES PER CHANGE TO PVC</td> <td>2/11/14</td> </tr> <tr> <td>BY</td> <td>NO</td> <td>REVISION</td> <td>DATE</td> </tr> </table>	AWL	1	REVISED WATER PROFILES PER CHANGE TO PVC	2/11/14	BY	NO	REVISION	DATE	SEWER PROFILE  600' SCALE MAP NO. 47      BLOCK NO. 2,3,8&9      ZONING: R-ED	<b>WINCOPIA FARMS</b> PHASE 6 LOTS 1 THRU 220 & OPEN SPACE LOTS 221 THRU 256 L 1188 P. 723 HOWARD COUNTY, MARYLAND ELECTION DISTRICT No. 6 CONTRACT No. 24-4815-D      TAX MAP 47-3	SCALE AS SHOWN  SHEET 4 OF 4
AWL	1	REVISED WATER PROFILES PER CHANGE TO PVC	2/11/14														
BY	NO	REVISION	DATE														

3-21-14