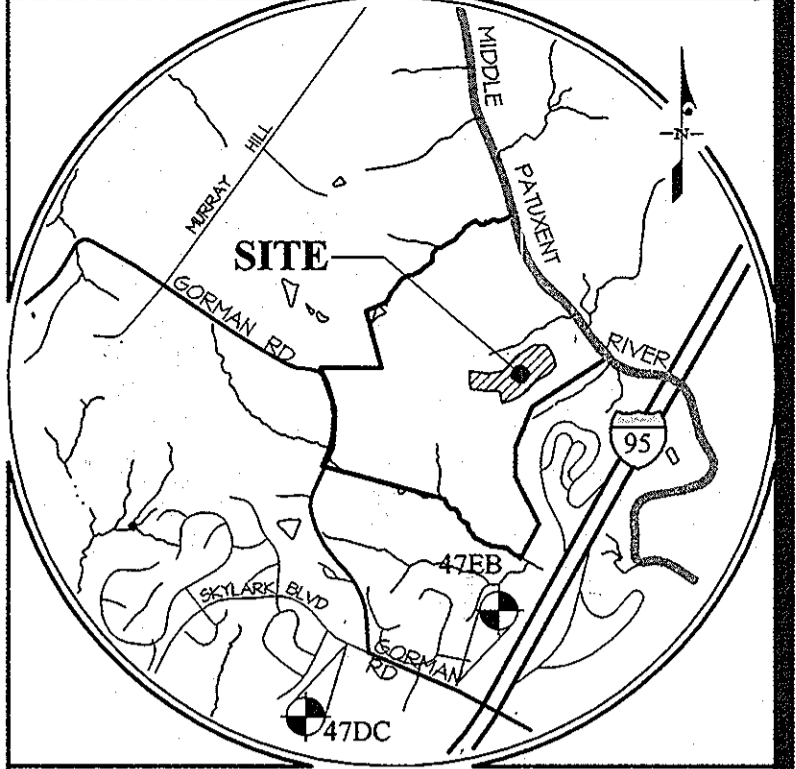


QUANTITIES				
ITEMS	QUANTITIES ESTIMATED	AS-BUILT		
		QUANTITIES	TYPE	MANUFACTURER/SUPPLIER
8" WATER MAIN	852 LF			
1 1/2" MHC	513 LF			
8" x 6" F.H.T.	3			
6" VALVE	3			
FIRE HYDRANT	3			
8" SEWER MAIN	2,434 LF			
4" EHC	460 LF			
4" MANHOLE	14			
Type B Dip Connection	4			
NAME OF UTILITY CONTRACTOR:				
SURVEY AND DRAFTING DIV.		CHECKBOX:	AS-BUILT DATE:	

TYPE OF BUILDING	RESIDENTIAL
NUMBER OF LOTS	16
NUMBER OF S.H.C.'s	16
NUMBER OF W.H.C.'s	16
AREA OF COMMERCIAL LOT/PARCEL	N/A
SEWER SHED	MIDDLE PATUXENT
PUMPING STATION	LITTLE PATUXENT RECLAMATION PLANT



VICINITY MAP
SCALE: 1" = 2,000'

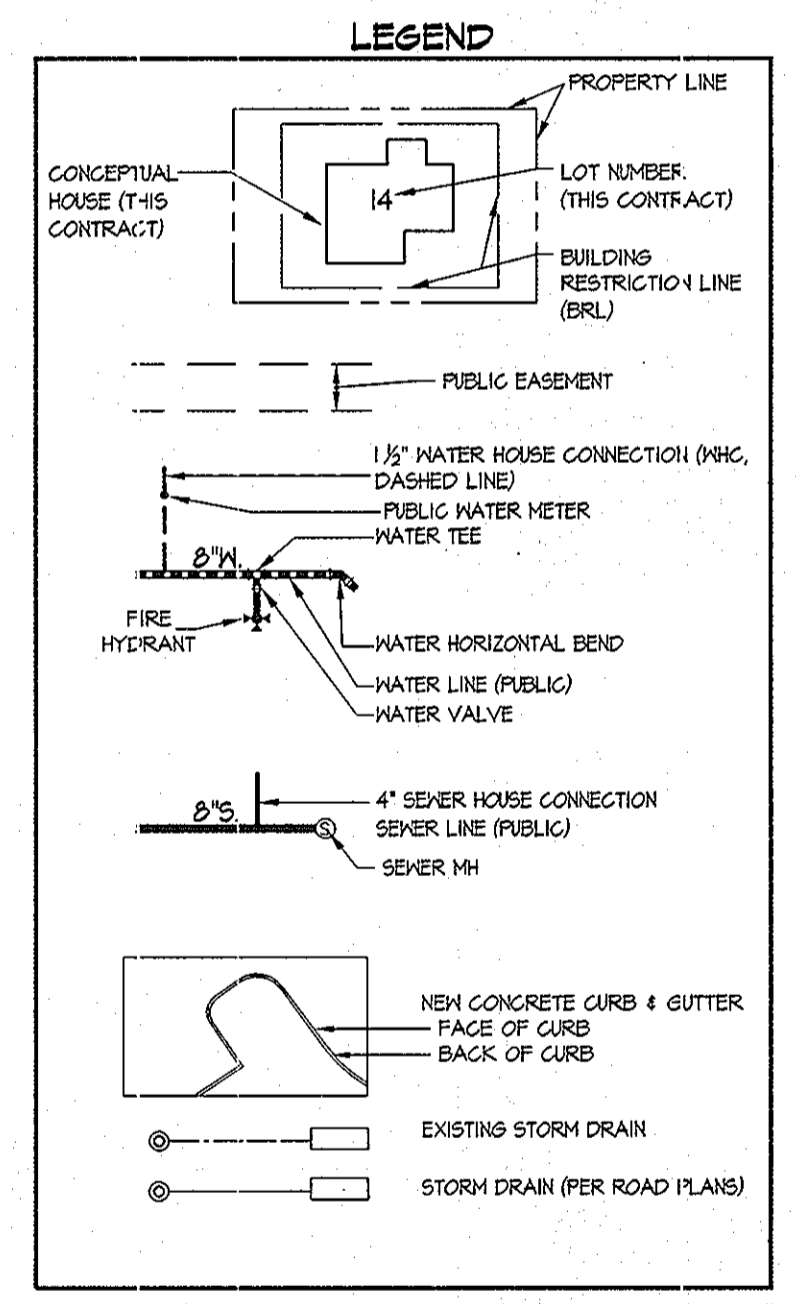
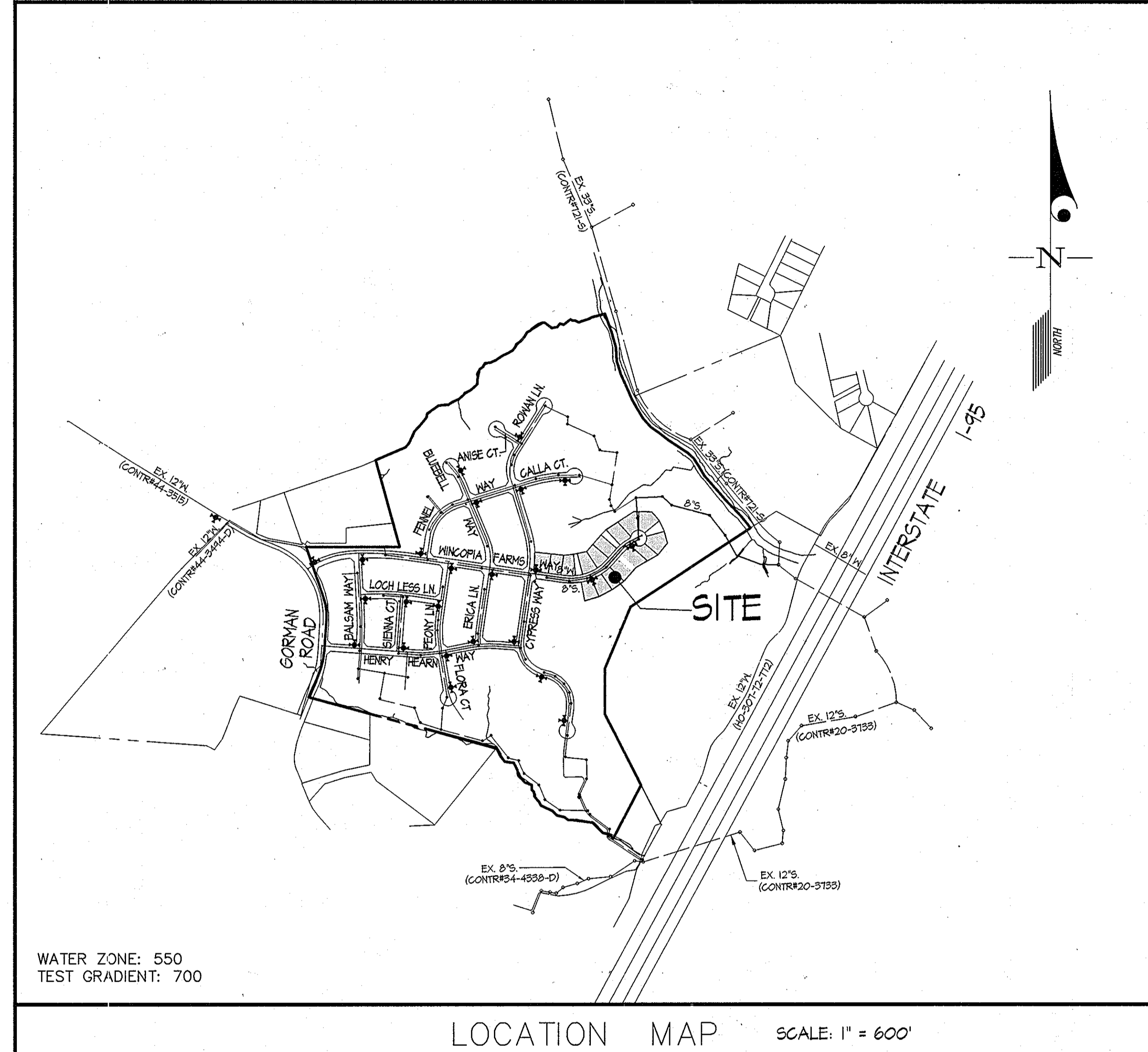
BENCHMARKS			
47DC	ELEV. 348.10	N = 536,615.00	E = 1,355,674.00
47EB	ELEV. = 394.23	N = 536,212.71	E = 1,354,833.57

ADC MAP: 40 GRID: B-3

GENERAL NOTES
Revised - October 2013

- Part I**
- Approximate locations of existing mains are shown. The contractor shall take all necessary precautions to protect existing mains and services and maintain uninterrupted service. Any damage incurred shall be repaired immediately to the satisfaction of the Engineer at the contractor's expense.
 - Topographic AIR surveys were performed on DECEMBER, 2008 by MCKENZIE SNYDER.
 - Horizontal and Vertical Survey Controls:
The coordinates shown on the drawings are based on Maryland State Reference System NAD '83/91 as projected by Howard County Geodetic Control Stations No. 47DC, and No. 47EB.
All vertical controls are based on NAVD '88. Vertical controls provided on the drawings are STANDARD DISCS ON CONCRETE MONUMENTS.
 - All pipe elevations shown are invert elevations unless otherwise noted on the plans.
 - Clear all utilities by a minimum of 12 inches. Clear all poles by 5'-0" minimum or tunnel as required unless otherwise noted. The owner has contacted the utility companies and has made arrangements for bracing of poles as shown on the drawings. In the event the contractor's work requires the bracing of additional poles, any cost incurred by the owner for the bracing of additional poles or damages shall be deducted from monies owed the contractor. The contractor shall coordinate with the utility companies to schedule the bracing of the poles.
 - For details not shown on the drawing, and for materials and construction methods, use Howard County Design Manual, Volume IV, Standard Specifications and Details for Construction (Latest Edition). The contractor shall have a copy of Volume IV on the job.
 - Where test pits have been made on existing utilities, they are noted by the symbol \oplus at the locations of the test pits. A note or notes containing the results of the test pit or pits is included on the drawings. Existing utilities in the vicinity of the proposed work for which test pits have not been dug shall be located by the contractor two weeks in advance of construction operations at his own expense.
 - The contractor shall notify the following utility companies or agencies at least five working days before starting work shown on these plans:

AT&T	1-800-252-1133
BGE (Construction Services)	410-631-8113
BGE (Emergency)	410-685-0123
Bureau of Utilities	410-313-4900
Colonial Pipeline Co.	410-795-1340
Miss Utility	1-800-257-7771
State Highway Administration	410-531-5533
Verizon	1-800-743-0033
 - Trees and shrubs are to be protected from damage to the maximum extent. Trees and shrubs located within the construction strip are not to be removed or damaged by the contractor.
 - The contractor shall remove trees, stumps and roots along the line of excavation. Payment for such removal shall be included in the unit price bid for construction of the main.
 - The contractor shall notify the Bureau of Highways, Howard County, at (410)-313-7450 at least five working days before open cutting or boring/jacking of any County road for laying water/sewer mains or house connections. The approval of these drawings will constitute compliance with DPW requirements per Section 18.11(a) of the Howard County Code.



WINCOPIA FARMS PUBLIC WATER & SEWER CONSTRUCTION ORDER

CONTRACT NUMBER	CONSTRUCTION ORDER
24-461-D	1
24-481-D	4
24-482-D	2
24-483-D	5
24-484-D	6
24-485-D	3

- SHEET INDEX**
- TITLE SHEET
 - WATER & SEWER EXTENSION PLAN
 - WATER & SEWER EXTENSION PLAN
 - WATER & SEWER PROFILE PLAN
 - WATER & SEWER PROFILE PLAN
 - WATER & SEWER PROFILE PLAN

WATER ZONE: 550
TEST GRADIENT: 700

CONTRACT No. 24-4811-D
WINCOPIA FARMS - PHASE 2
LOTS 43 THRU 58
HOWARD COUNTY, MARYLAND
DEPARTMENT OF PUBLIC WORKS

- Part II WATER**
- All water mains shall be D.I.P. Class 54 unless otherwise noted.
 - Tops of all water mains shall have a minimum of 3'-6" of cover unless otherwise noted.
 - Valves adjacent to tees shall be strapped to tees.
 - All fittings shall be buttressed or anchored with concrete in accordance with Standard Details unless otherwise provided for on the drawings.
 - Fire hydrants shall be set to the bury line elevations shown on the drawings. All fire hydrants shall be installed in accordance with Standard Details. The soil around the fire hydrant shall be compacted in accordance with Section 1000 and Section 1005 of the Standard Specifications.
 - The contractor shall not operate any water main valves on the existing water system.
 - Tracer wires and continuity test stations shall be installed on all DIP and PVC water mains in accordance with the Howard County Design Manual.
 - For PVC water mains, all records for the Quality Control and Qualification Test Requirements noted in Section 5.1 of the ANWA Standard C900 for PVC pressure pipe shall be submitted with the pipe material certifications or shop drawings prior to approval of the material for use. The test records shall be for the pipe to be installed under this contract. All PVC pipe shall contain markings to allow cross referencing of the pipe supplied to the test records received.
 - Unless otherwise noted on the plans or in the specifications sacrificial anodes shall be installed on all valves and metallic fittings used with PVC water mains in accordance with Volume IV, Standard Specifications and Details for Construction. Seventeen (17) pound Magnesium anodes shall be installed on all valves and ductile iron fittings including restraints and harnesses. Twelve (12) pound Zinc anodes shall be installed on all stainless steel fittings and saddles used with PVC mains. All gaskets used with PVC mains shall be ductile iron.
 - Proper Assembly of Gasketed PVC Pipe Joints: The manufacturer's insertion line of gasketed PVC pipe joints indicates the maximum depth of insertion of the spigot into the bell. After assembly of the joint, the insertion line shall remain visible. Dual insertion lines on gasketed PVC pipe indicate the maximum and minimum depth of insertion of the spigot into the bell. The contractor shall not over insert or over home the spigot into the bell of PVC pipe.
 - All changes in horizontal or vertical direction of PVC water pipe shall be made with standard bends, 5-degree sweeps or high deflection (HD) couplings. No bending of the pipe or deflecting of PVC pipe joints is permitted. Where high deflection couplings or 5-degree sweeps are permitted, the contractor shall provide one full pipe length (20-foot long) on either side of the high deflection coupling or 5-degree sweep. The contractor shall use a vibratory plate compactor or other approved means to thoroughly compact the #57 stone on both sides of the high deflection coupling or 5-degree sweep, taking care not to use compaction equipment directly over the fitting.
 - PVC high deflection couplings shall be limited to a total deflection of 3-degrees (1 1/2-degree on either end of the coupling), shall be rated for a minimum 200 psi meeting the requirements of ANWA C900, shall have a minimum lay length of 9-inches and shall have center stops. PVC High deflection couplings shall be CertainTeed PVC High Deflection (HD) Stop Couplings or equal. Five degree sweeps shall be bell by spigot, rated for a minimum 225 psi, DR10 meeting the requirements of ANWA C900 and shall be Multi Fittings (pex) Blue Brute DR10 or equal.
 - When PVC high deflection couplings or PVC 5-degree sweeps are used to facilitate changes in horizontal or vertical alignments of ANWA C-900 PVC pipelines, the contractor shall install devices for the prevention of over-insertion of the PVC pipe spigots or plain ends into the push on bell joint on both sides of the high deflection couplings and 5 degree sweeps. Bell stops shall be placed at the proper insertion line for the fitting. The bell stop shall be manufactured of ductile iron and incorporate an expansion retention spring to allow for pipe expansion and contraction. The bell stops shall be Series 5000 Mega-Stop, as manufactured by EBAA Iron, Inc. or approved equal.
- Part III SEWER**
- All sewer mains shall be D.I.P. or P.V.C. unless otherwise noted.
 - All manholes shall be 4'-0" inside diameter unless otherwise noted.
 - Force mains shall be D.I.P. only.
 - Manholes shown with 12" and 16" walls are for brick manholes only.
 - Manholes designated M.T. in plan and profile shall have watertight frame and cover, Standard Detail 65.52. Where watertight manhole frames and covers are used, set top of frame 1'-6" above finished grade unless otherwise noted on the drawings.
 - House(s) with the symbol "C.N.S." indicates that the cellar cannot be served.

PREPARED FOR:
BEAZER HOMES CORP.
8965 GUILFORD RD., SUITE 290
COLUMBIA, MD 21046
ATTN: BRIAN KNAUFF
410-381-3222

L:\CADD\DWG\DESIGN\2013\WATER\WATER\PHASE 2\24-4811-D\24-4811-D-01.dwg
 PLOTTED: 10/29/2013 10:13 AM. LAST SAVED: 10/28/2013 5:07 PM. PLOTTED BY: Girma Tesfaye

SEDIMENT CONTROL MEASURES WILL BE IMPLEMENTED IN ACCORDANCE WITH F-13-103, SECTION 308 OF THE SPECIFICATIONS AT FINAL PLAN STAGE.

THIS DEVELOPMENT PLAN IS APPROVED FOR SOIL EROSION AND SEDIMENT CONTROL BY THE HOWARD SOIL CONSERVATION DISTRICT.

APPROVED: *John M. Robertson* 11/26/13
HOWARD S.C.D. Date

DEPARTMENT OF PUBLIC WORKS HOWARD COUNTY, MARYLAND <i>Steve Clemon</i> CHIEF, BUREAU OF UTILITIES	DEPARTMENT OF PLANNING AND ZONING HOWARD COUNTY, MARYLAND <i>John M. Robertson</i> CHIEF, DEVELOPMENT ENGINEERING DIVISION	GLW GUTSCHICK LITTLE & WEBER, P.A. CIVIL ENGINEERS, LAND SURVEYORS, LAND PLANNERS, LANDSCAPE ARCHITECTS 3909 NATIONAL DRIVE - SUITE 250 - BIRTONSVILLE OFFICE PARK BIRTONSVILLE, MARYLAND 20886 TEL: 301-421-4024 BALT: 410-880-1820 DC/VA: 301-989-2524 FAX: 301-421-4186	DATE OCT. 2013 G.L.W. No. 08052 PROFESSIONAL CERTIFICATION I HEREBY CERTIFY THAT THESE PLANS WERE PREPARED OR APPROVED BY ME, AND THAT I AM A DULY LICENSED PROFESSIONAL ENGINEER UNDER THE LAWS OF THE STATE OF MARYLAND, LICENSE NO. 12975 EXP. DATE: MAY 26, 2014	STATE OF MARYLAND PROFESSIONAL ENGINEER <i>John M. Robertson</i>	TITLE SHEET 600" SCALE MAP NO. 47 BLOCK NO. 2,3,8&9 ZONING: R-ED REVISION BY NO DATE	WINCOPIA FARMS PHASE 2 LOTS 1 THRU 220 & OPEN SPACE LOTS 221 THRU 256 HOWARD COUNTY, MARYLAND ELECTION DISTRICT No. 6 CONTRACT No. 24-4811-D	SCALE AS SHOWN SHEET 1 OF 6
--	---	---	--	--	--	---	--------------------------------

SEWER MANHOLE LOCATIONS LOT 50/51		
MH No.	NAD 83/91 COORDINATES	
	NORTH	EAST
99	534829	1355251

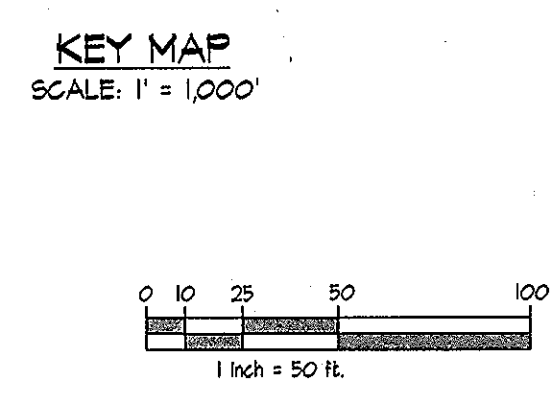
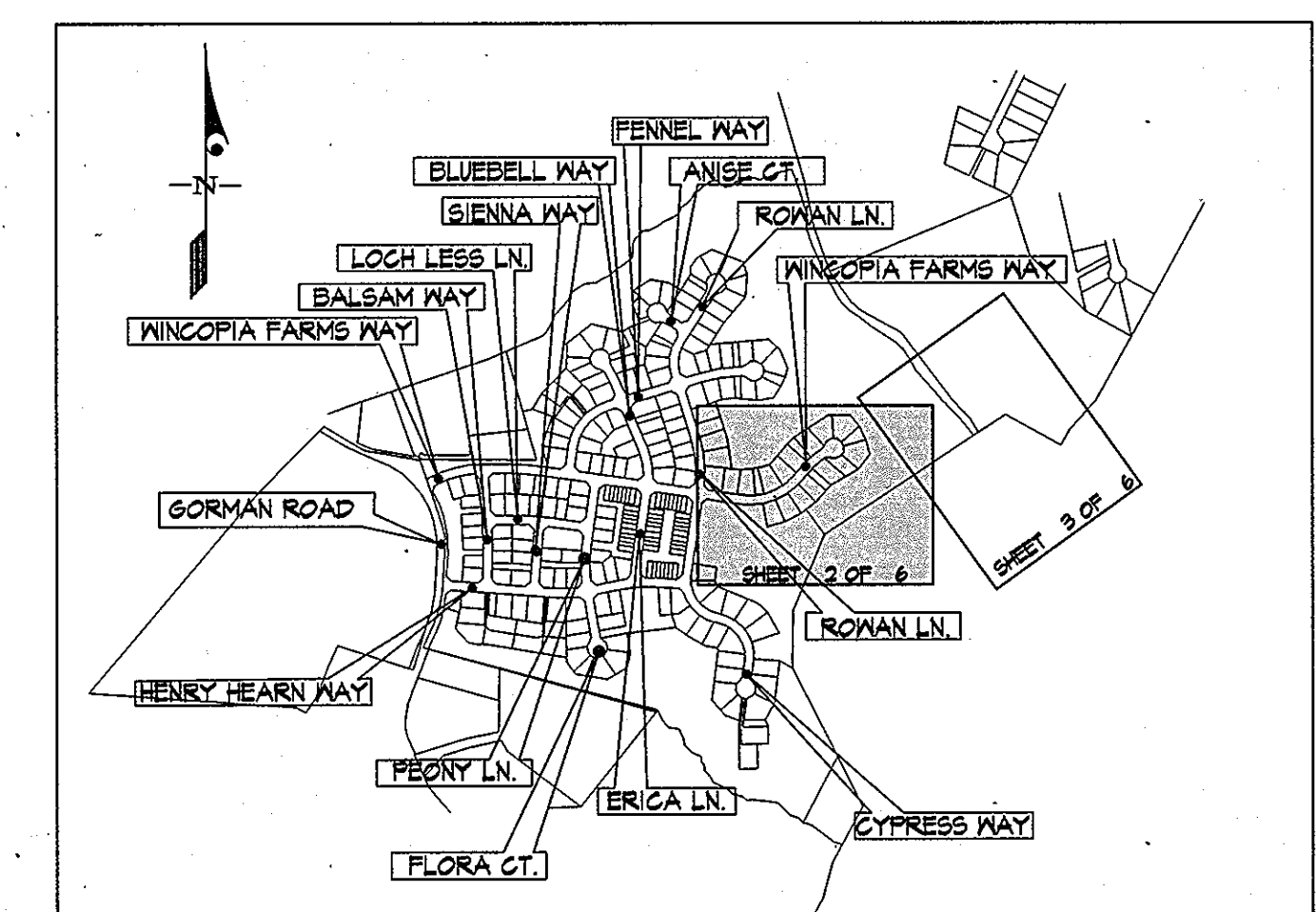
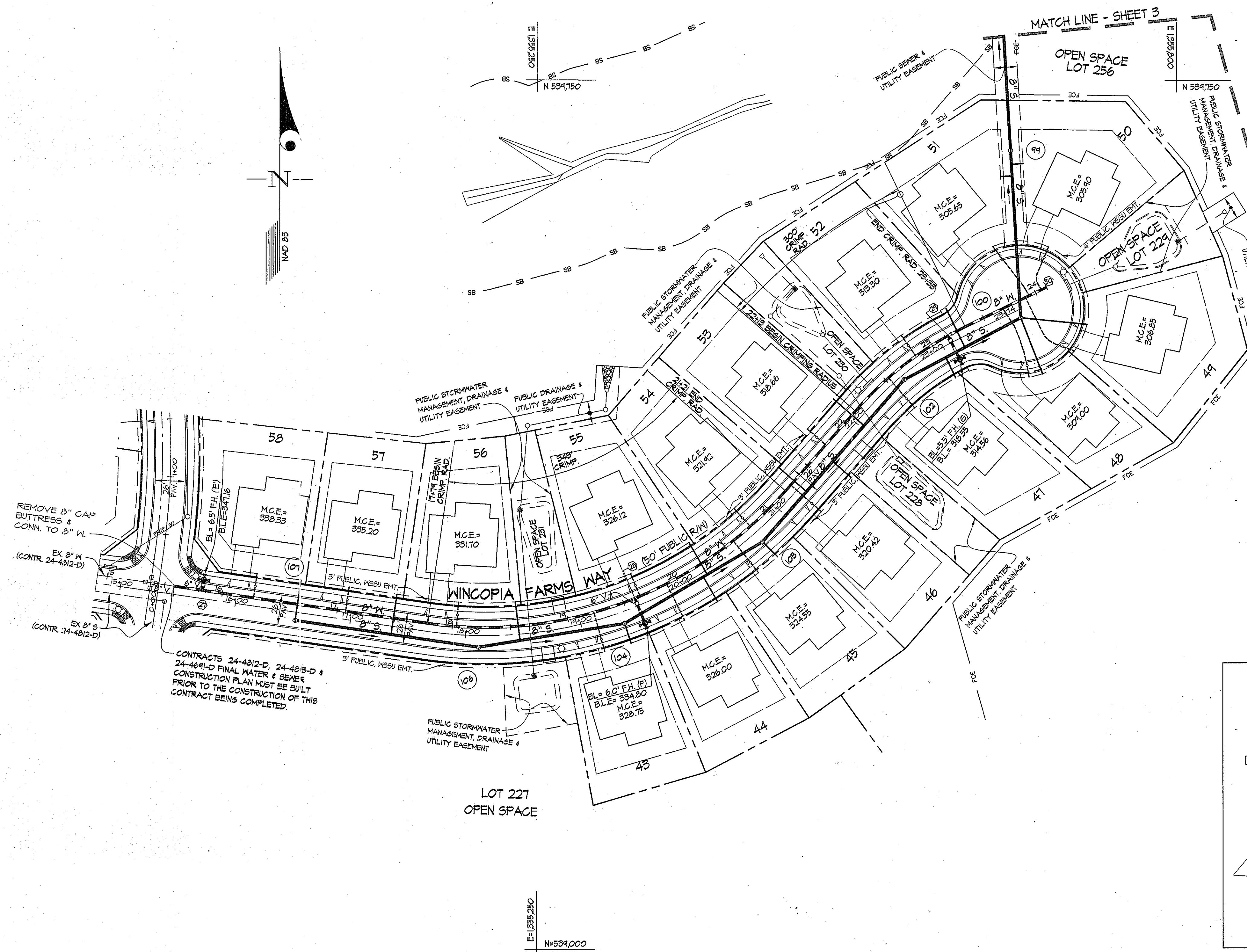
SEWER MANHOLE LOCATIONS WINCOPIA FARMS WAY		
MH No.	STATION	OFFSET
100	25+36	7.0' RIGHT
102	22+56	3.0' RIGHT
103	20+71	10' RIGHT
104	19+36	10' RIGHT
106	18+11	10' RIGHT
107	16+53	7.0' RIGHT

LOT FRONTAGE TABLE	
LOT No.	DISTANCE (feet)
WINCOPIA FARMS WAY	
45	75.00
44	75.00
45	75.00
46	75.02
47	86.42
48	103.51
44	53.65
50	47.06
51	74.85
52	94.91
53	85.00
54	102.50
55	111.25
56	101.45
57	85.00
58	75.11

- NOTES:
- 3' PUBLIC WATER, SEWER, SIDEWALK AND UTILITY EASEMENT = 3' PUBLIC WSSU EMT. (ON MAIN ROADS)
 - 4' PUBLIC WATER, SEWER, SIDEWALK AND UTILITY EASEMENT = 4' WSSU EMT. (ON CUL-DE-SACS)
 - ALL SEWER HOUSE CONNECTIONS (SHCs) ARE 4" UNLESS LABELED OTHERWISE. SEE LEGEND SHEET I.
 - ALL WATER HOUSE CONNECTIONS (WHCs) ARE 1/2" UNLESS LABELED OTHERWISE. SEE LEGEND SHEET I.

FIRE HYDRANT INFORMATION	
FH	LOCATION
E	N: 534310.42 E: 1354963.38
F	N: 534201.64 E: 1355343.10
G	N: 534504.12 E: 1355613.80

FITTING CHART		
STATION	FITTING	LOCATION
27	8" x 6" FHT	N: 534304.42 E: 1354962.08
28	8" x 6" FHT	N: 534303.04 E: 1355334.40
29	8" x 6" FHT	N: 534524.58 E: 1355603.74
30	8" CAP	N: 534571.53 E: 1355688.45



PREPARED FOR:
BEAZER HOMES CORP.
8965 GUILFORD RD., SUITE 290
COLUMBIA, MD 21046
ATTN: BRIAN KNAUFF
410-381-3222

FOR WATER & SEWER PROFILES SEE SHEETS 4 THRU 6

L:\CADD\PROJECTS\2013\24-4812-D\24-4812-D-PLAN-1-1-13.dwg PLOTTED 10/27/2013 10:23 AM. LAST SAVED: 10/28/2013 7:51 AM. PLOTTED BY: GERM TROTT

DEPARTMENT OF
PUBLIC WORKS
HOWARD COUNTY, MARYLAND

Steve Green
CHIEF, BUREAU OF UTILITIES

DEPARTMENT OF
PLANNING AND ZONING
HOWARD COUNTY, MARYLAND

John Blum
CHIEF, DEVELOPMENT ENGINEERING DIVISION

DATE: 12-6-13

GLWGUTSCHICK LITTLE & WEBER, P.A.
CIVIL ENGINEERS, LAND SURVEYORS, LAND PLANNERS, LANDSCAPE ARCHITECTS
3009 NATIONAL DRIVE - SUITE 250 - BURTONSVILLE OFFICE PARK
BURTONSVILLE, MARYLAND 20818
TEL: 301-421-4024 BALT: 410-880-1820 DC/VA: 301-939-2524 FAX: 301-421-4186

DATE
OCT.,
2013

G.L.W. No.
08052

PROFESSIONAL CERTIFICATION

I HEREBY CERTIFY THAT THESE PLANS
WERE PREPARED OR APPROVED BY ME,
AND THAT I AM A DULY LICENSED
PROFESSIONAL ENGINEER UNDER THE
LAWS OF THE STATE OF MARYLAND,
LICENSE NO. 12975

EXP. DATE: MAY 28, 2014

11-12-13

BY	NO	REVISION	DATE

WATER and SEWER EXTENSION
PLAN

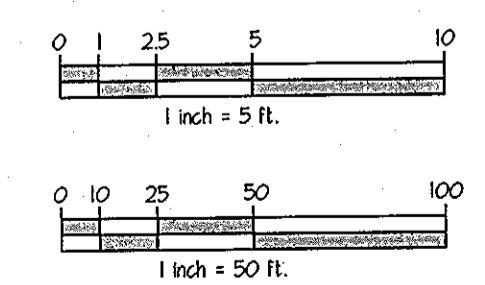
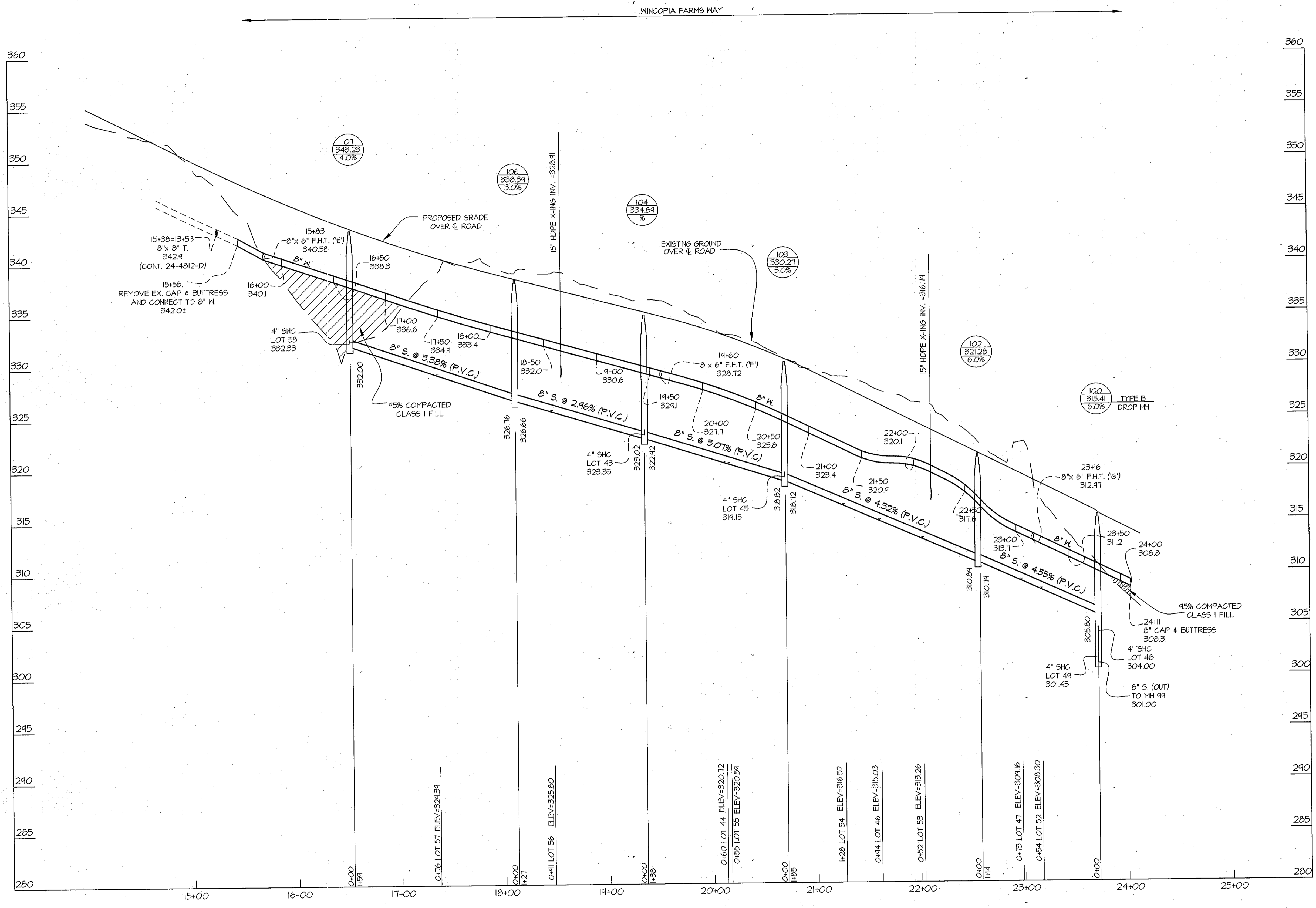
600'-SCALE MAP NO. 47 BLOCK NO. 2,3,8&9 ZONING: R-ED

WINCOPIA FARMS
PHASE 2
LOTS 1 THRU 220 &
OPEN SPACE LOTS 221 THRU 256
L 11388 F 725
HOWARD COUNTY, MARYLAND
ELECTION DISTRICT No. 6
CONTRACT No. 24-4811-D TAX MAP: 47-3

SCALE
1"=50'

SHEET
2 OF 6

L:\CADD\DRAWINGS\08052\PIB-WAT-SEW\FINAL WSS\PHASE 2\08052-FNS-4-6.dwg
 PLOTTED: 10/29/2013 10:27 AM. LAST SAVED: 10/29/2013 8:38 AM. PLOTTED BY: Girma Tsipoye



FOR WATER & SEWER PLAN VIEW SEE SHEETS 2 & 3

PROFILE SCALES:
 HOR. 1" = 50'
 VERT. 1" = 5'

PREPARED FOR:
 BEAZER HOMES CORP.
 8965 GUILFORD RD., SUITE 290
 COLUMBIA, MD 21046
 ATTN: BRIAN KNAUFF
 410-381-3222

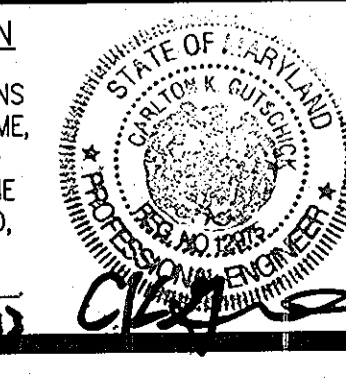
DEPARTMENT OF
 PUBLIC WORKS
 HOWARD COUNTY, MARYLAND

DEPARTMENT OF
 PLANNING AND ZONING
 HOWARD COUNTY, MARYLAND

GLW GUTSCHICK LITTLE & WEBER, P.A.
 CIVIL ENGINEERS, LAND SURVEYORS, LAND PLANNERS, LANDSCAPE ARCHITECTS
 3609 NATIONAL DRIVE - SUITE 250 - BURTONSVILLE OFFICE PARK
 BURTONSVILLE, MARYLAND 20866
 TEL: 301-421-4024 BAL: 410-883-1820 DC/VA: 301-989-2524 FAX: 301-421-4186

DATE
 OCT.,
 2013

PROFESSIONAL CERTIFICATION
 I HEREBY CERTIFY THAT THESE PLANS
 WERE PREPARED OR APPROVED BY ME,
 AND THAT I AM A DULY LICENSED
 PROFESSIONAL ENGINEER UNDER THE
 LAWS OF THE STATE OF MARYLAND,
 LICENSE NO. 12375
 EXP. DATE: MAY 26, 2014



BY	NO	REVISION	DATE

WATER and SEWER PROFILES

WINCOPIA FARMS
 PHASE 2
 LOTS 1 THRU 220 &
 OPEN SPACE LOTS 221 THRU 256
 L. 11388 F. 725
 HOWARD COUNTY, MARYLAND
 ELECTION DISTRICT No. 6
 CONTRACT No. 24-4811-D TAX MAP 47-3

SCALE
 AS SHOWN

SHEET
 4 OF 6

CHIEF, BUREAU OF UTILITIES DATE

CHIEF, DEVELOPMENT ENGINEERING DIVISION DATE

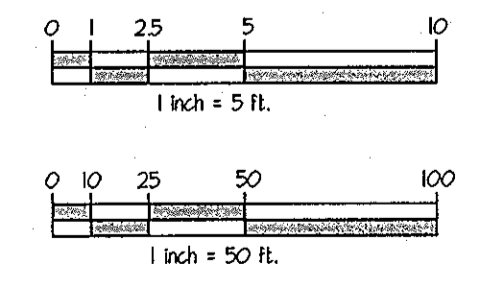
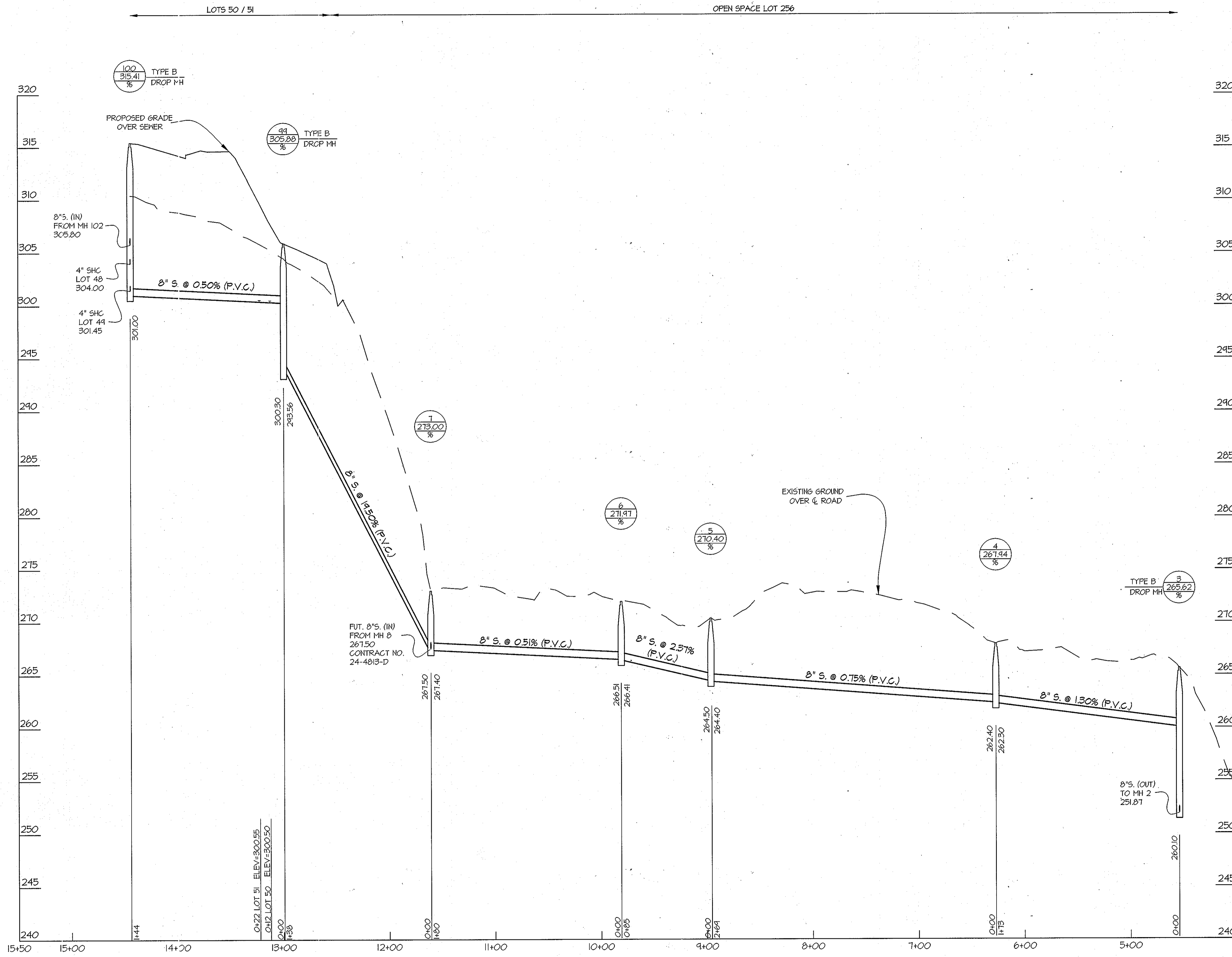
DES. WsJ DRN. WsJ CHK. DDS

08052

11-17-13

600' SCALE MAP NO. 47 BLOCK NO. 2,3,8&9 ZONING: R-ED

© GLW 2013

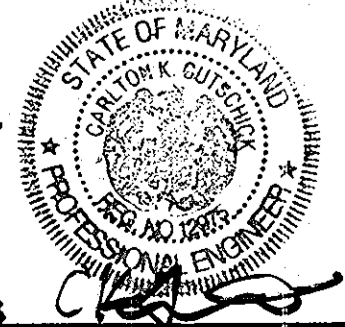


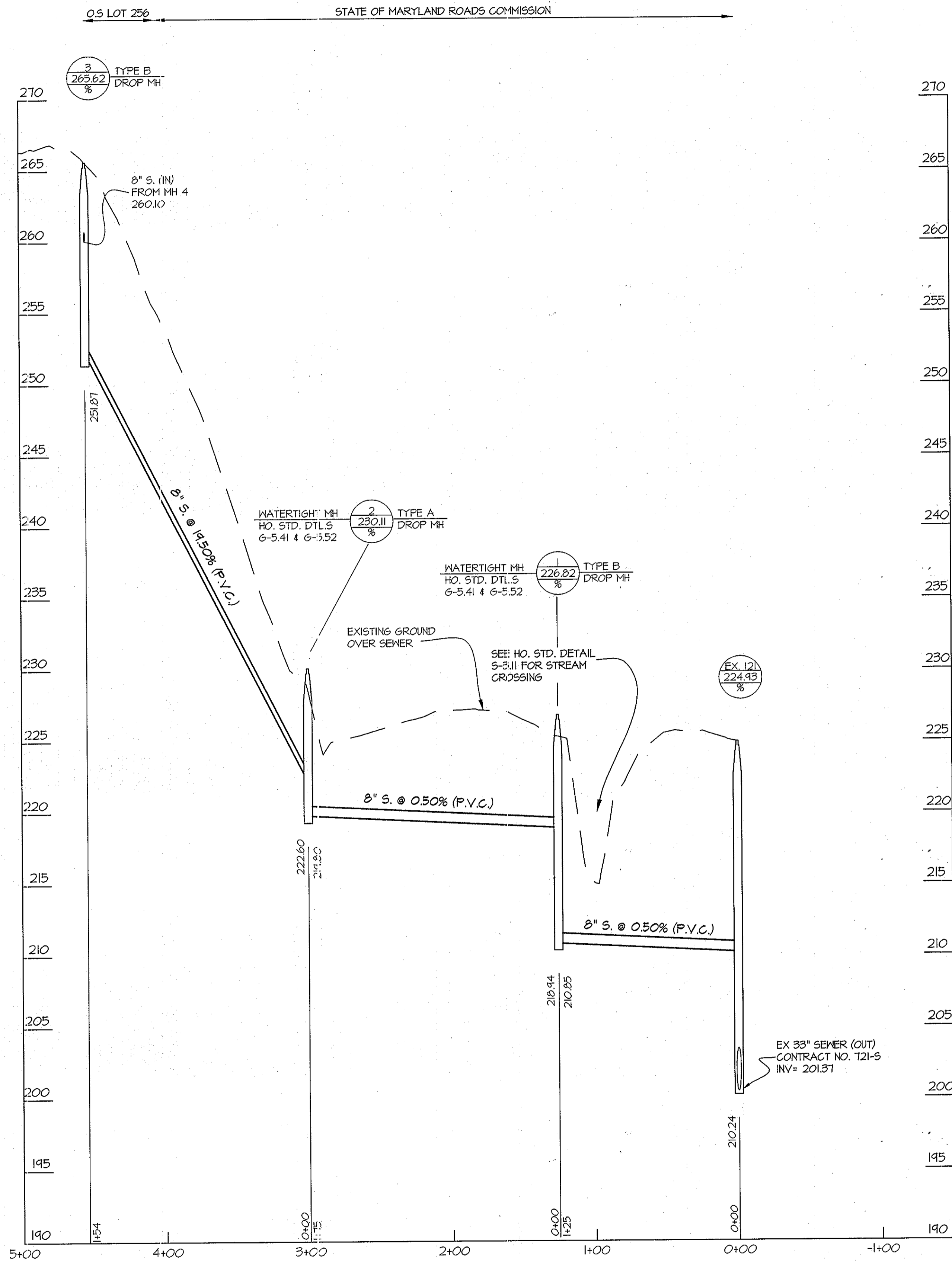
PREPARED FOR:
 BEAZER HOMES CORP.
 8965 GUILFORD RD., SUITE 290
 COLUMBIA, MD 21046
 ATTN: BRIAN KNAUFF
 410-381-3222

FOR WATER & SEWER PLAN VIEW SEE SHEETS 2 & 3

PROFILE SCALES:
 HOR. 1" = 50'
 VERT. 1" = 5'

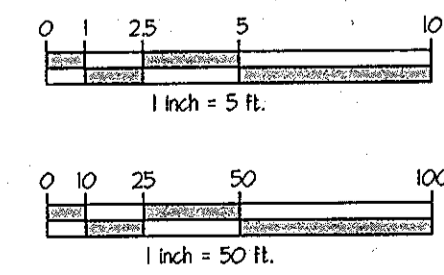
L:\CD\OPR\AMMS\08052\PH2-WAT-SEWER\FINAL - WBS\PHASE 2\08052_PHS_1.dwg
 DATE: 10/27/2013 10:28 AM, USER: JLD, PLOT: 10/27/2013 8:38 AM, PLOTTED BY: JLD, PLOTTER: Targem

DEPARTMENT OF PUBLIC WORKS HOWARD COUNTY, MARYLAND <i>Steve C. Green</i> CHIEF, BUREAU OF UTILITIES	DEPARTMENT OF PLANNING AND ZONING HOWARD COUNTY, MARYLAND <i>Chief Engineer</i> CHIEF, DEVELOPMENT ENGINEERING DIVISION	GLW GUTSCHICK LITTLE & WEBER, P.A. CIVIL ENGINEERS, LAND SURVEYORS, LAND PLANNERS, LANDSCAPE ARCHITECTS 3909 NATIONAL DRIVE - SUITE 250 - BURTONSVILLE OFFICE PARK BURTONSVILLE, MARYLAND 20866 TEL: 301-421-4024 BALT: 410-880-1820 DC/VA: 331-989-2524 FAX: 301-421-4186	DATE OCT., 2013 G.L.W. No. 08052	PROFESSIONAL CERTIFICATION I HEREBY CERTIFY THAT THESE PLANS WERE PREPARED OR APPROVED BY ME AND THAT I AM A DULY LICENSED PROFESSIONAL ENGINEER UNDER THE LAWS OF THE STATE OF MARYLAND, LICENSE NO. 12975 EXP. DATE: MAY 26, 2014 	<table border="1" style="width: 100%; border-collapse: collapse;"> <tr> <th>BY</th> <th>NO</th> <th>REVISION</th> <th>DATE</th> </tr> <tr> <td> </td> <td> </td> <td> </td> <td> </td> </tr> </table>	BY	NO	REVISION	DATE					SEWER PROFILES 600' SCALE MAP NO. 47 BLOCK NO. 2,3,8&9 ZONING: R-ED	WINCOPIA FARMS PHASE 2 LOTS 1 THRU 220 & OPEN SPACE LOTS 221 THRU 256 L. 11388 P. 725 HOWARD COUNTY, MARYLAND ELECTION DISTRICT No. 6 CONTRACT No. 24-4811-D TAX MAP: 47-3	SCALE AS SHOWN SHEET 5 OF 6
BY	NO	REVISION	DATE													



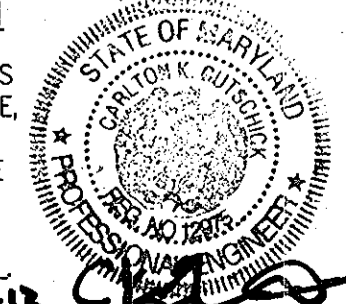
FOR WATER & SEWER PLAN VIEW SEE SHEETS 2 & 3

PROFILE SCALES:
 HOR. 1" = 50'
 VERT. 1" = 5'



PREPARED FOR:
 BEAZER HOMES CORP.
 8965 GUILFORD RD., SUITE 290
 COLUMBIA, MD 21046
 ATTN: BRIAN KNAUFF
 410-381-3222

L:\CAD\URAWINGS\08052\PH2-WAT-SEW\FINAL WKS\PHASE 2\08052-1\PS-4-6.dwg
 PLOTTED: 10/29/2013 10:30 AM, LAST SAVED: 10/29/2013 8:38 AM, PLOTTED BY: Gmg, E:\gmg

DEPARTMENT OF PUBLIC WORKS HOWARD COUNTY, MARYLAND <i>Steve Chan</i> CHIEF, BUREAU OF UTILITIES	DEPARTMENT OF PLANNING AND ZONING HOWARD COUNTY, MARYLAND <i>Chad Egan</i> CHIEF, DEVELOPMENT ENGINEERING DIVISION	GLW GUTSCHICK LITTLE & WEBER, P.A. CIVIL ENGINEERS, LAND SURVEYORS, LAND PLANNERS, LANDSCAPE ARCHITECTS 3909 NATIONAL DRIVE - SUITE 250 - BURTONSVILLE OFFICE PARK BURTONSVILLE, MARYLAND 20866 TEL: 301-421-4024 FAX: 301-421-4186 BAL: 410-880-1820 DC/VA: 301-989-2524	DATE OCT., 2013 G.L.W. No. 08052	PROFESSIONAL CERTIFICATION I HEREBY CERTIFY THAT THESE PLANS WERE PREPARED OR APPROVED BY ME, AND THAT I AM A DULY LICENSED PROFESSIONAL ENGINEER UNDER THE LAWS OF THE STATE OF MARYLAND, LICENSE NO. 12975 EXP. DATE: MAY 26, 2014 	<table border="1" style="width: 100%; border-collapse: collapse;"> <tr> <th>BY</th> <th>NO</th> <th>REVISION</th> <th>DATE</th> </tr> <tr> <td> </td> <td> </td> <td> </td> <td> </td> </tr> </table>	BY	NO	REVISION	DATE					SEWER PROFILE 600' SCALE MAP NO. 47 BLOCK NO. 2,3,8&9 ZONING: R-ED	WINCOPIA FARMS PHASE 2 LOTS 1 THRU 220 & OPEN SPACE LOTS 221 THRU 256 L-11388, F-725 HOWARD COUNTY, MARYLAND ELECTION DISTRICT NO. 6 CONTRACT NO. 24-4811-D TAX MAP: 47-3	SCALE AS SHOWN SHEET 6 OF 6
BY	NO	REVISION	DATE													