

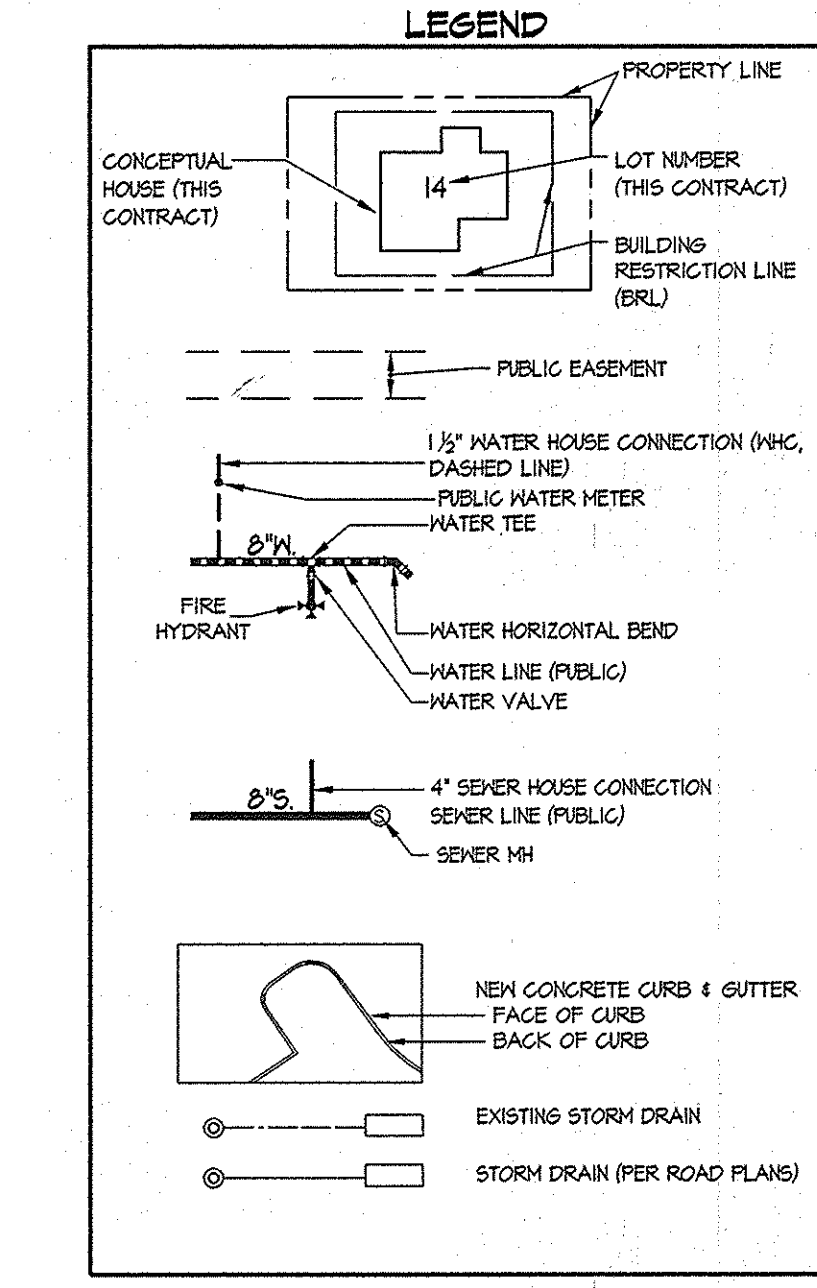
QUANTITIES				
ITEMS	QUANTITIES ESTIMATED	AS-BUILT		
		QUANTITIES	TYPE	MANUFACTURER/SUPPLIER
8" WATER MAIN (C900 DR18 PVC)	852 LF	829 LF	C-900 PVC	NATIONAL PIPE
1" 1/2" MHC	515 LF	400 LF	TYPE K COPPER	MUELLER INDUSTRIES
8" 1/2" HD	7	7	PVC	NATIONAL PIPE
8" x 6" F.H.T.	3	3	D.I.P.	TYLER
6" VALVE	3	3	M.J. GATE VALVE	AMERICAN FLOW
FIRE HYDRANT	3	3	B.848	AMERICAN FLOW
8" SEWER MAIN (C900 DR18 PVC)	2,434 LF	2,434 LF		
4" SHC	460 LF	443 LF	PVC-SDR-35	NATIONAL PIPE
4" MANHOLE	15	15	PRECAST	CONCRETE PRECAST
Type B Drop Connection	4	4	PRECAST	CONCRETE PRECAST

FERGUSSON
FERGUSSON
FERGUSSON
FERGUSSON
FERGUSSON
FERGUSSON

NAME OF UTILITY CONTRACTOR: CONSOLIDATED CONSTRUCTION SERVICES INC.

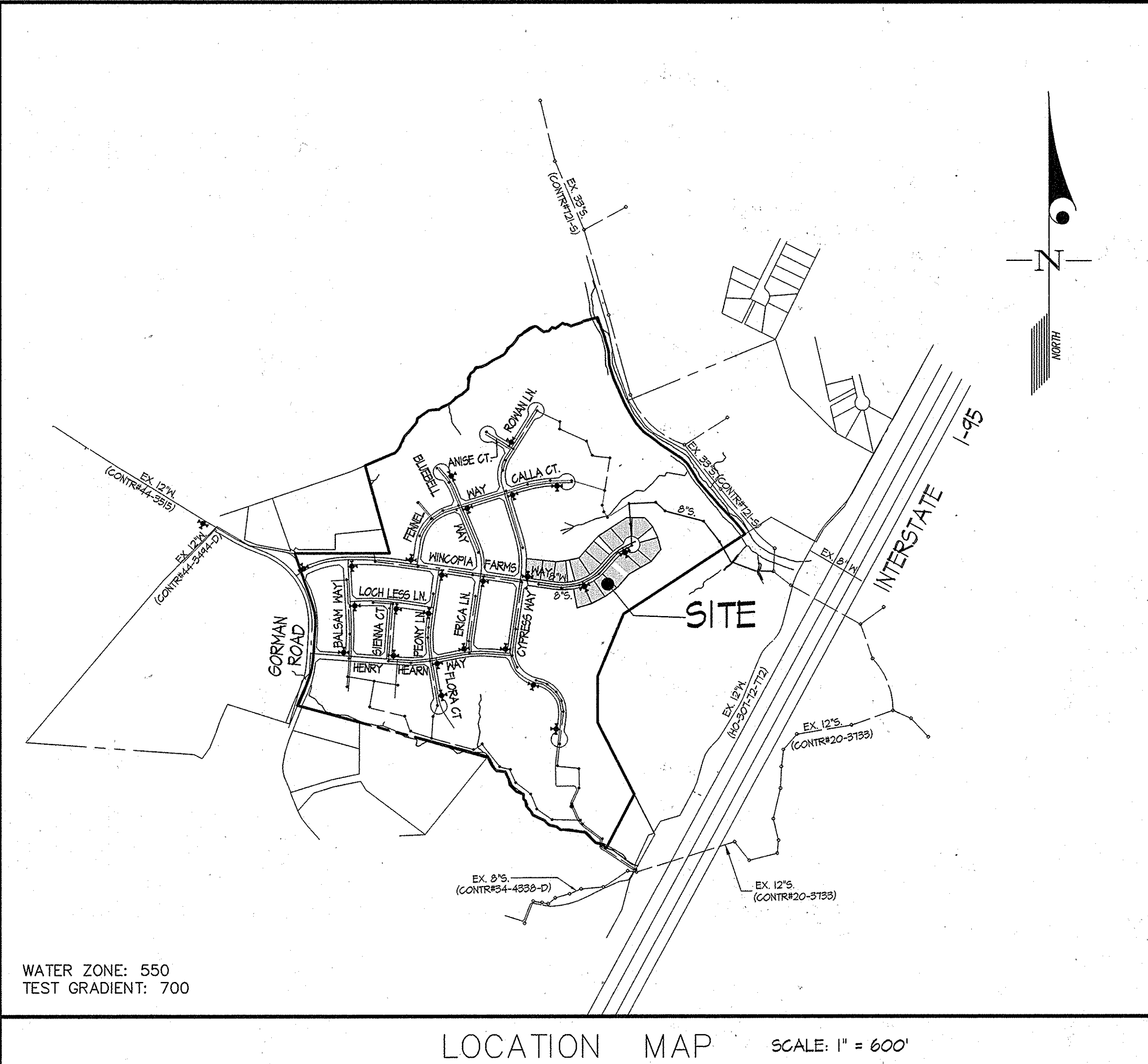
NOTE: SEE SHEET 6 OF 6 FOR AS-BUILT MEASUREMENTS.

SURVEY AND DRAFTING DIV. CHECKBOX: AS-BUILT DATE:



WINCOPIA FARMS PUBLIC WATER & SEWER CONSTRUCTION ORDER	
CONTRACT NUMBER	CONSTRUCTION ORDER
24-4641-D	1
24-4811-D	4
24-4812-D	2
24-4815-D	5
24-4814-D	6
24-4815-D	3

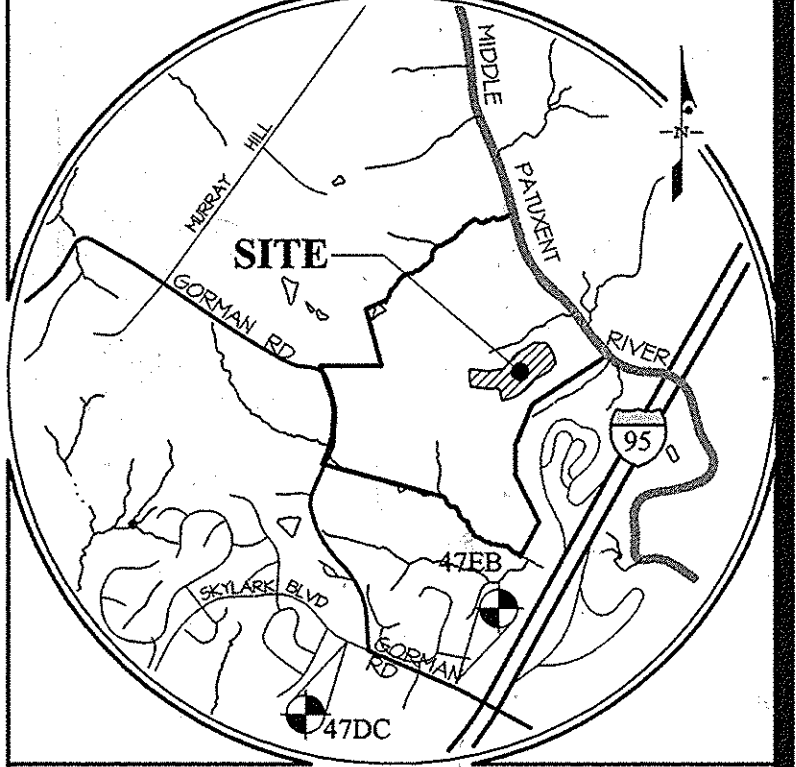
- SHEET INDEX
- TITLE SHEET
 - WATER & SEWER EXTENSION PLAN
 - WATER & SEWER EXTENSION PLAN
 - WATER & SEWER PROFILE PLAN
 - WATER & SEWER PROFILE PLAN
 - WATER & SEWER PROFILE PLAN



WATER ZONE: 550
TEST GRADIENT: 700

LOCATION MAP SCALE: 1" = 600'

TYPE OF BUILDING	RESIDENTIAL
NUMBER OF LOTS	16
NUMBER OF S.H.C.'s	16
NUMBER OF W.H.C.'s	16
AREA OF COMMERCIAL LOT/PARCEL	N/A
SEWER SHED	MIDDLE PATUMENT
PUMPING STATION	LITTLE PATUMENT RECLAMATION PLANT



VICINITY MAP SCALE: 1" = 2,000'

BENCHMARK	ELEV.	N	E
47DC	538.10	N = 536,615.00	E = 1,355,674.00
47EB	534.23	N = 536,212.71	E = 1,364,833.57

ADC MAP: 40 GRID: B-3

GENERAL NOTES
Revised - October 2013

- Part I**
- Approximate locations of existing mains are shown. The contractor shall take all necessary precautions to protect existing mains and services and maintain uninterrupted service. Any damage incurred shall be repaired immediately to the satisfaction of the Engineer at the contractor's expense.
 - Topographic AIR surveys were performed on DECEMBER, 2008 by MCKENZIE SNYDER.
 - Horizontal and Vertical Survey Controls:
The coordinates shown on the drawings are based on Maryland State Reference System NAD '83/91 as projected by Howard County Geodetic Control Stations No. 47DC, and No. 47EB.
All vertical controls are based on NAVD '88. Vertical controls provided on the drawings are STANDARD DISCS ON CONCRETE MONUMENTS.
 - All pipe elevations shown are invert elevations unless otherwise noted on the plans.
 - Clear all utilities by a minimum of 12 inches. Clear all poles by 5'-0" minimum or tunnel as required unless otherwise noted. The owner has contacted the utility companies and has made arrangements for bracing of poles as shown on the drawings. In the event the contractor's work requires the bracing of additional poles, any cost incurred by the owner for the bracing of additional poles or damages shall be deducted from monies owed to the contractor. The contractor shall coordinate with the utility companies to schedule the bracing of the poles.
 - For details not shown on the drawing, and for materials and construction methods, use Howard County Design Manual, Volume IV, Standard Specifications and Details for Construction (Latest Edition). The contractor shall have a copy of Volume IV on the job.
 - Where test pits have been made on existing utilities, they are noted by the symbol (S) at the locations of the test pits. A note or notes containing the results of the test pit or pits is included on the drawings. Existing utilities in the vicinity of the proposed work for which test pits have not been dug shall be located by the contractor two weeks in advance of construction operations at his own expense.
 - The contractor shall notify the following utility companies or agencies at least five working days before starting work shown on these plans:
AT&T..... 1-800-252-1133
BGE (Construction Services)..... 410-631-8113
BGE (Emergency)..... 410-685-0123
Bureau of Utilities..... 410-313-4900
Colonial Pipeline Co..... 410-745-1340
Miss Utility..... 1-800-251-7111
State Highway Administration..... 410-531-5533
Verizon..... 1-800-743-0033
 - Trees and shrubs are to be protected from damage to the maximum extent. Trees and shrubs located within the construction strip are not to be removed or damaged by the contractor.
 - The contractor shall remove trees, stumps and roots along the line of excavation. Payment for such removal shall be included in the unit price bid for construction of the main.
 - The contractor shall notify the Bureau of Highways, Howard County, at (410)-313-7450 at least five working days before open cutting or boring/jacking of any County road for laying water/sewer mains or house connections. The approval of these drawings will constitute compliance with DPW requirements per Section 18.11(a) of the Howard County Code.

Part II WATER

- All water mains shall be AWWA Standard C900 DR18 PVC unless otherwise noted.
- Tops of all water mains shall have a minimum of 3'-6" of cover unless otherwise noted.
- Valves adjacent to tees shall be strapped to tees.
- All fittings shall be buttressed or anchored with concrete in accordance with Standard Details unless otherwise provided for on the drawings.
- Fire hydrants shall be set to the bury line elevations shown on the drawings. All fire hydrants shall be installed in accordance with Standard Details. The soil around the fire hydrant shall be compacted in accordance with Section 1000 and Section 1005 of the Standard Specifications.
- The contractor shall not operate any water main valves on the existing water system.
- Tracer wires and continuity test stations shall be installed on all DIP and PVC water mains in accordance with the Howard County Design Manual.
- For PVC water mains, all records for the Quality Control and Qualification Test Requirements noted in Section 51 of the AWWA Standard C900 for PVC pressure pipe shall be submitted with the pipe material certifications or shop drawings prior to approval of the material for use. The test records shall be for the pipe to be installed under this contract. All PVC pipe shall contain markings to allow cross referencing of the pipe supplied to the test records received.
- Unless otherwise noted on the plans or in the specifications sacrificial anodes shall be installed on all valves and metallic fittings used with PVC water mains in accordance with Volume IV, Standard Specifications and Details for Construction. Seventeen (17) pound Magnesium anodes shall be installed on all valves and ductile iron fittings including restraints and harnesses. Twelve (12) pound Zinc anodes shall be installed on all stainless steel fittings and saddles used with PVC mains. All gaskets used with PVC mains shall be ductile iron.
- Proper Assembly of Gasketed PVC Pipe Joints: The manufacturer's insertion line of gasketed PVC pipe joints indicates the maximum depth of insertion of the spigot into the bell. After assembly of the joint, the insertion line shall remain visible. Dual insertion lines on gasketed PVC pipe indicate the maximum and minimum depth of insertion of the spigot into the bell. The contractor shall not over insert or over home the spigot into the bell of PVC pipe.
- All changes in horizontal or vertical direction of PVC water pipe shall be made with standard bends, 5-degree sweeps or high deflection (HD) couplings. No bending of the pipe or deflecting of PVC pipe joints is permitted. Where high deflection couplings or 5-degree sweeps are permitted, the contractor shall provide one full pipe length (20-foot long) on either side of the high deflection coupling or 5-degree sweep. The contractor shall use a vibratory plate compactor or other approved means to thoroughly compact the #57 stone on both sides of the high deflection coupling or 5-degree sweep, taking care not to use compaction equipment directly over the fitting.

PVC high deflection couplings shall be limited to a total deflection of 3-degrees (1 1/2-degree on either end of the coupling), shall be rated for a minimum 200 psi meeting the requirements of AWWA C900, shall have a minimum lay length of 9-inches and shall have center stops. PVC High deflection couplings shall be CertainTeed PVC High Deflection (HD) Stop Couplings or equal. Five degree sweeps shall be bell by spigot, rated for a minimum 225 psi, DR18 meeting the requirements of AWWA C900 and shall be Multi Fittings (pex) Blue Brute DR18 or equal.

- When PVC high deflection couplings or PVC 5-degree sweeps are used to facilitate changes in horizontal or vertical alignments of AWWA C-900 PVC pipelines, the contractor shall install devices for the prevention of over-insertion of the PVC pipe spigots or plain ends into the push on bell joint on both sides of the high deflection couplings and 5 degree sweeps. Bell stops shall be placed at the proper insertion line for the fitting. The bell stop shall be manufactured of ductile iron and incorporate an expansion retention spring to allow for pipe expansion and contraction. The bell stops shall be Series 5000 Mega-Stop, as manufactured by EBAA Iron, Inc. or approved equal.

Part III SEWER

- All sewer mains shall be D.I.P. or PVC, unless otherwise noted.
- All manholes shall be 4'-0" inside diameter unless otherwise noted.
- Force mains shall be D.I.P. only.
- Manholes shown with 12" and 16" walls are for brick manholes only.
- Manholes designated W.T. in plan and profile shall have watertight frame and cover, Standard Detail 65.52. Where watertight manhole frames and covers are used, set top of frame 1'-6" above finished grade unless otherwise noted on the drawings.
- House(s) with the symbol "C.N.S." indicates that the cellar cannot be served.

PREPARED FOR:
BEAZER HOMES CORP.
8965 GUILFORD RD., SUITE 290
COLUMBIA, MD 21046
ATTN: BRIAN KNAUFF
410-381-3222

CONTRACT No. 24-4811-D
WINCOPIA FARMS - PHASE 2
LOTS 43 THRU 58
HOWARD COUNTY, MARYLAND
DEPARTMENT OF PUBLIC WORKS

SEDIMENT CONTROL MEASURES WILL BE IMPLEMENTED IN ACCORDANCE WITH F-13-103, SECTION 30B OF THE SPECIFICATIONS AT FINAL PLAN STAGE.

THIS DEVELOPMENT PLAN IS APPROVED FOR SOIL EROSION AND SEDIMENT CONTROL BY THE HOWARD COUNTY SOIL CONSERVATION DISTRICT.

APPROVED:
John L. Robertson 11/26/13
HOWARD S.C.D. Date

DEPARTMENT OF PUBLIC WORKS
HOWARD COUNTY, MARYLAND

Steve Leam
CHIEF, BUREAU OF UTILITIES

DEPARTMENT OF PLANNING AND ZONING
HOWARD COUNTY, MARYLAND

Shay Edmond 12-6-13
CHIEF, DEVELOPMENT ENGINEERING DIVISION

GLWGUTSCHICK LITTLE & WEBER, P.A.
CIVIL ENGINEERS, LAND SURVEYORS, LAND PLANNERS, LANDSCAPE ARCHITECTS
3909 NATIONAL DRIVE - SUITE 250 - BIRTONVILLE OFFICE PARK
BIRTONVILLE, MARYLAND, 20866
TEL: 301-421-4024 FAX: 301-989-2524 FAX: 301-421-4186

DATE OCT., 2013
G.L.W. No. 08052

PROFESSIONAL CERTIFICATION
I HEREBY CERTIFY THAT THESE PLANS WERE PREPARED OR APPROVED BY ME, AND THAT I AM A DULY LICENSED PROFESSIONAL ENGINEER UNDER THE LAWS OF THE STATE OF MARYLAND, LICENSE NO. 12975
EXP. DATE: MAY 26, 2014

John L. Robertson
PROFESSIONAL ENGINEER

BY	NO	REVISION	DATE
31.		MH 99A added	10/10/14
32.		Changed 8" water from D.I.P. to PVC, updated sewer PVC type.	9/14/14

TITLE SHEET
600' SCALE MAP NO. 47 BLOCK NO. 2,3,8&9 ZONING: R-ED

WINCOPIA FARMS
PHASE 2
LOTS 1 THRU 220 &
OPEN SPACE LOTS 221 THRU 256
L. 1188 P. 725
HOWARD COUNTY, MARYLAND
ELECTION DISTRICT No. 6
CONTRACT No. 24-4811-D TAX MAP 47-3

SCALE AS SHOWN
SHEET 1 OF 6

GLW (DRAWINGS) (2013) (PUB-INT-SEW) (PHASE 2) (10/28/2013 5:07 PM) PLOTTED BY: cromo Thegroy

SEWER MANHOLE LOCATIONS LOT 50/51		
MH No.	NAD '83/11 COORDINATES	
	NORTH	EAST
99	534,624	1355,651

SEWER MANHOLE LOCATIONS WINGCOPIA FARMS WAY		
MH No.	STATION	OFFSET
100	23+36	7.0' RIGHT
102	22+56	3.8' RIGHT
103	20+71	10' RIGHT
104	14+56	10' RIGHT
106	18+11	10' RIGHT
107	16+55	7.0' RIGHT

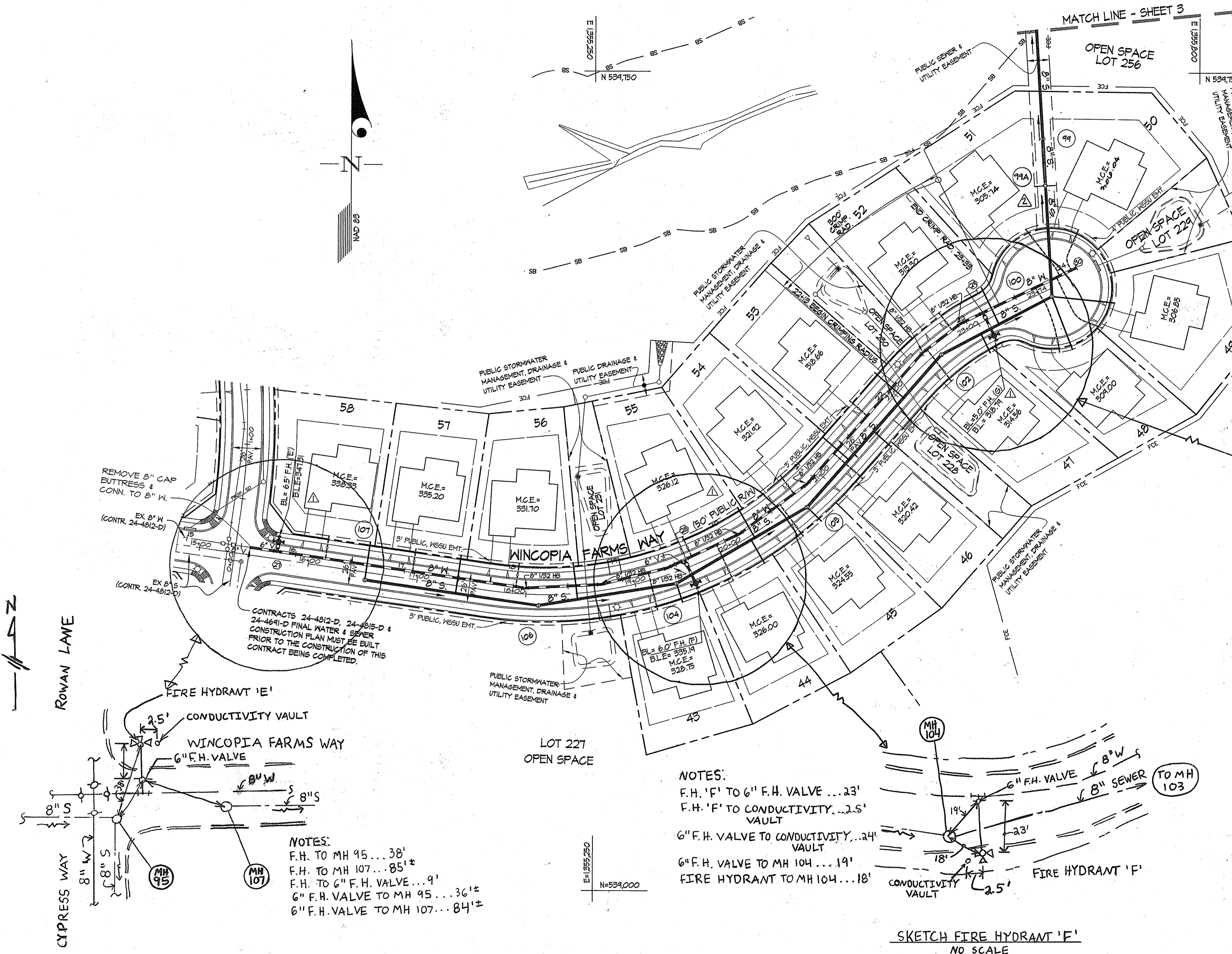
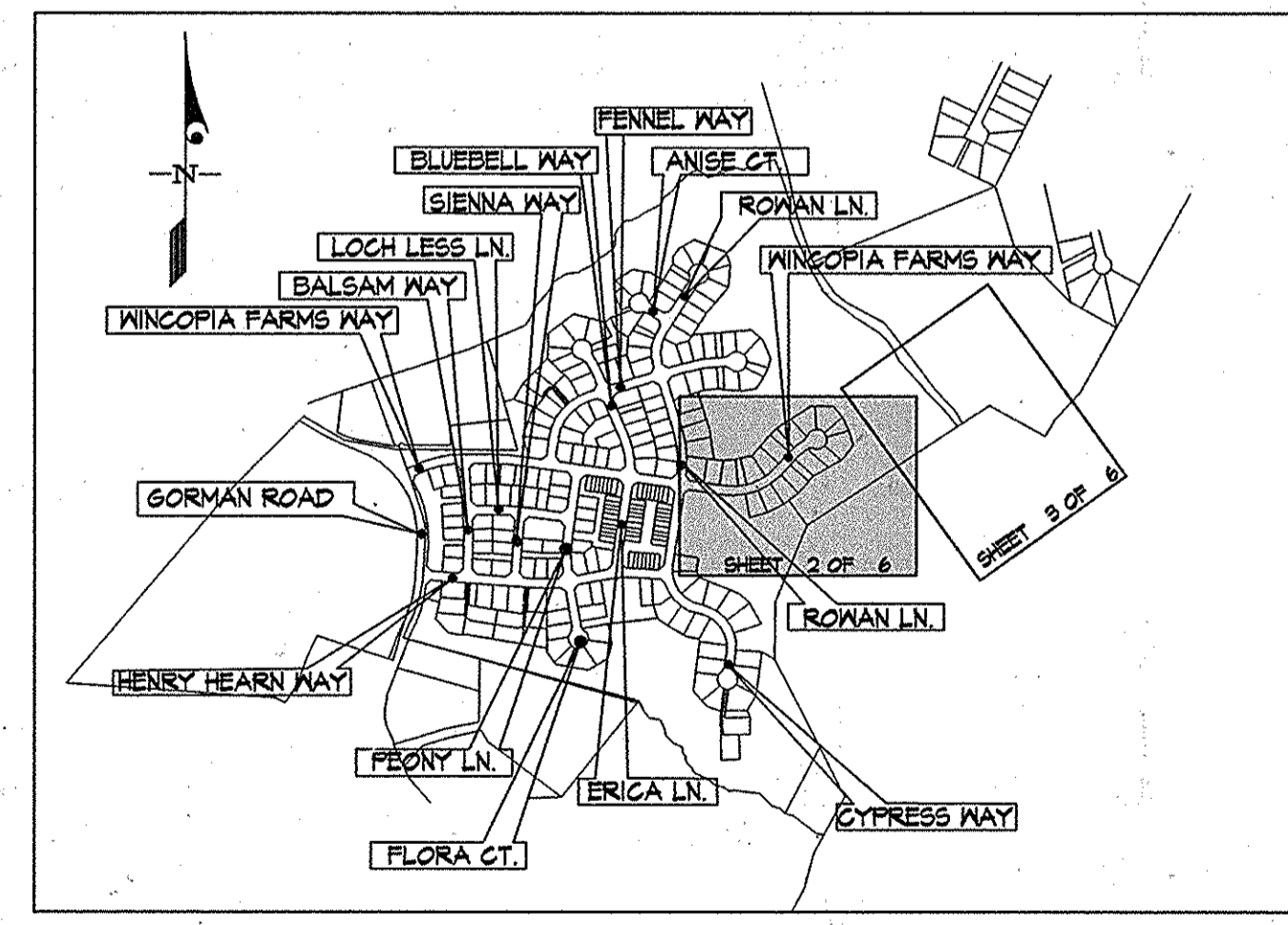
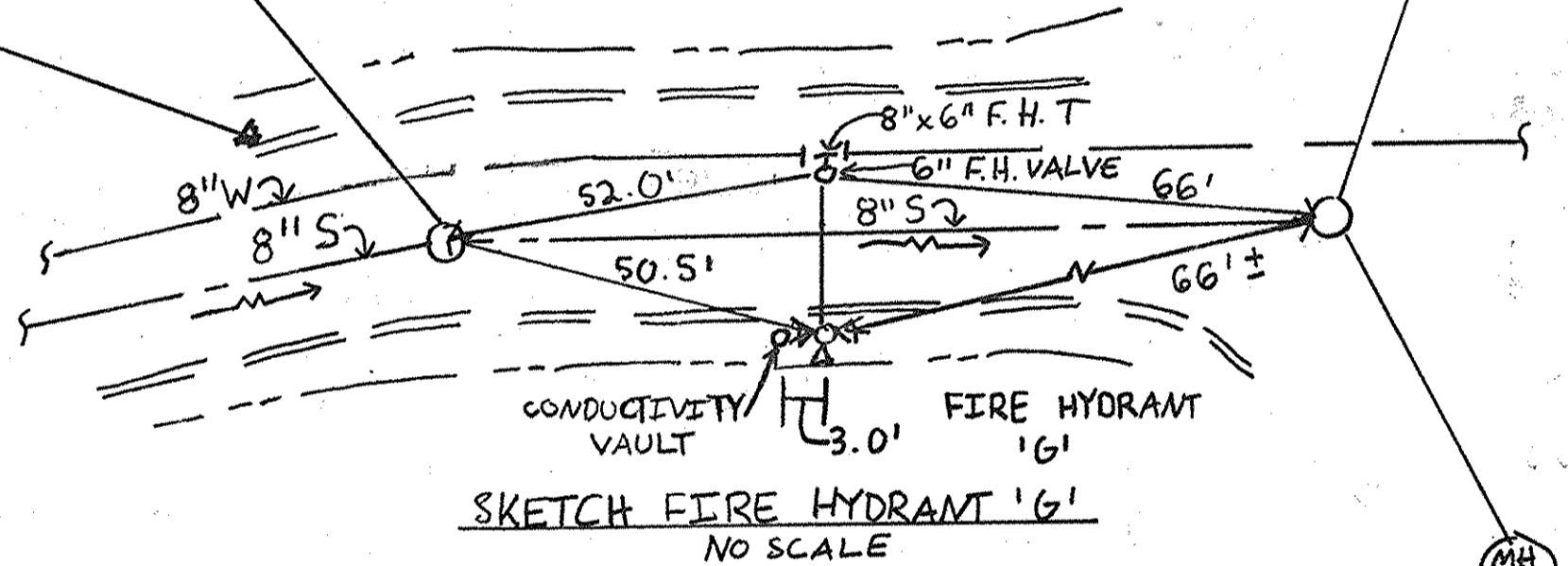
LOT FRONTAGE TABLE	
LOT No.	DISTANCE (feet)
WINGCOPIA FARMS WAY	
43	75.00
44	75.00
45	75.00
46	75.02
47	86.42
48	103.57
49	59.65
50	47.06
51	74.25
52	94.91
53	85.00
54	102.58
55	111.25
56	101.45
57	85.00
58	79.11

- NOTES:
- 3' PUBLIC WATER, SEWER, SIDEWALK AND UTILITY EASEMENT = 5' PUBLIC WGSU EMT. (ON MAIN ROADS)
 - 4' PUBLIC WATER, SEWER, SIDEWALK AND UTILITY EASEMENT = 4' WGSU EMT. (ON CUL-DE-SACS)
 - ALL SEWER HOUSE CONNECTIONS (SHCs) ARE 4" UNLESS LABELED OTHERWISE. SEE LEGEND SHEET I.
 - ALL WATER HOUSE CONNECTIONS (WHCs) ARE 1/2" UNLESS LABELED OTHERWISE. SEE LEGEND SHEET I.

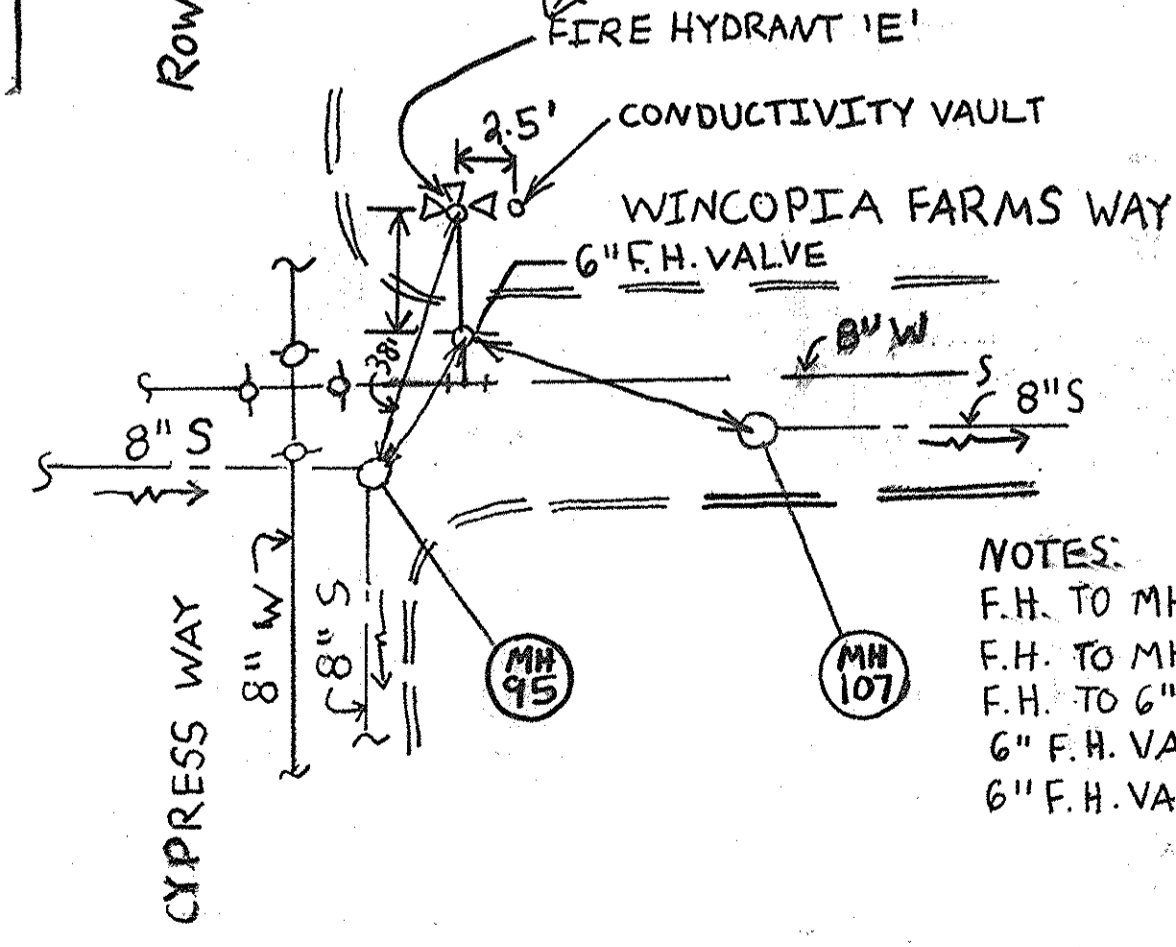
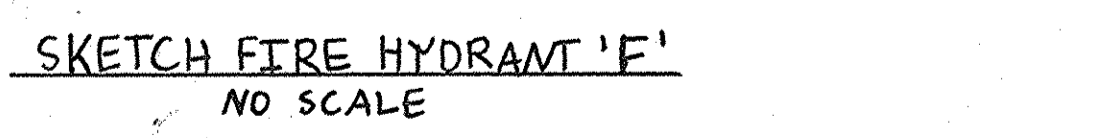
FIRE HYDRANT INFORMATION	
FH	LOCATION
E	N: 534,316.42 E: 1,354,963.38
F	N: 534,201.64 E: 1,355,343.10
G	N: 534,504.12 E: 1,355,618.20

FITTING CHART		
STATION	FITTING	LOCATION
(2)	8" x 6" FHT	N: 534,304.42 E: 1,354,962.08
18+12	8" 1/32 HB	N: 534,216.46 E: 1,355,184.31
18+80	8" 1/32 HB	N: 534,280.00 E: 1,355,256.84
14+48	8" 1/32 HB	N: 534,246.63 E: 1,355,322.33
(2)	8" x 6" FHT	N: 534,303.04 E: 1,355,334.40
20+15	8" 1/32 HB	N: 534,325.12 E: 1,355,383.31
20+86	8" 1/32 HB	N: 534,367.45 E: 1,355,434.87
22+43	8" 1/32 HB	N: 534,406.42 E: 1,355,543.24
23+04	8" 1/32 HB	N: 534,523.78 E: 1,355,540.84
(2)	8" x 6" FHT	N: 534,521.50 E: 1,355,603.74
(2)	8" CAP	N: 534,511.53 E: 1,355,608.45

- NOTES:
- F.H. '16' TO 6" F.H. VALVE ... 20'
 - F.H. '16' TO CONDUCTIVITY VAULT ... 3.0'
 - F.H. '16' TO MH 102 ... 50.5'
 - 6" FIRE VALVE TO MH 102 ... 52.0'
 - F.H. '16' TO MH 100 ... 66'
 - 6" F.H. VALVE TO MH 100 ... 66'
 - 6" F.H. VALVE TO CONDUCTIVITY VAULT ... 21'

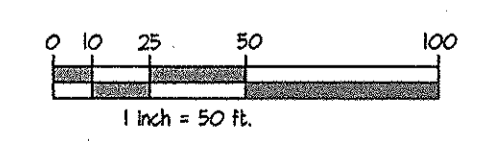


- NOTES:
- F.H. 'F' TO 6" F.H. VALVE ... 23'
 - F.H. 'F' TO CONDUCTIVITY VAULT ... 2.5'
 - 6" F.H. VALVE TO CONDUCTIVITY VAULT ... 24'
 - 6" F.H. VALVE TO MH 104 ... 19'
 - FIRE HYDRANT TO MH 104 ... 18'



- NOTES:
- F.H. TO MH 95 ... 38'
 - F.H. TO MH 107 ... 85'
 - F.H. TO 6" F.H. VALVE ... 9'
 - 6" F.H. VALVE TO MH 95 ... 36'
 - 6" F.H. VALVE TO MH 107 ... 84'

FOR WATER & SEWER PROFILES SEE SHEETS 4 THRU 6



PREPARED FOR:
BEAZER HOMES CORP.
8965 GULFORD RD., SUITE 290
COLUMBIA, MD 21046
ATTN: BRIAN KNAUFF
410-381-3222

AS-BUILT 4-30-2015

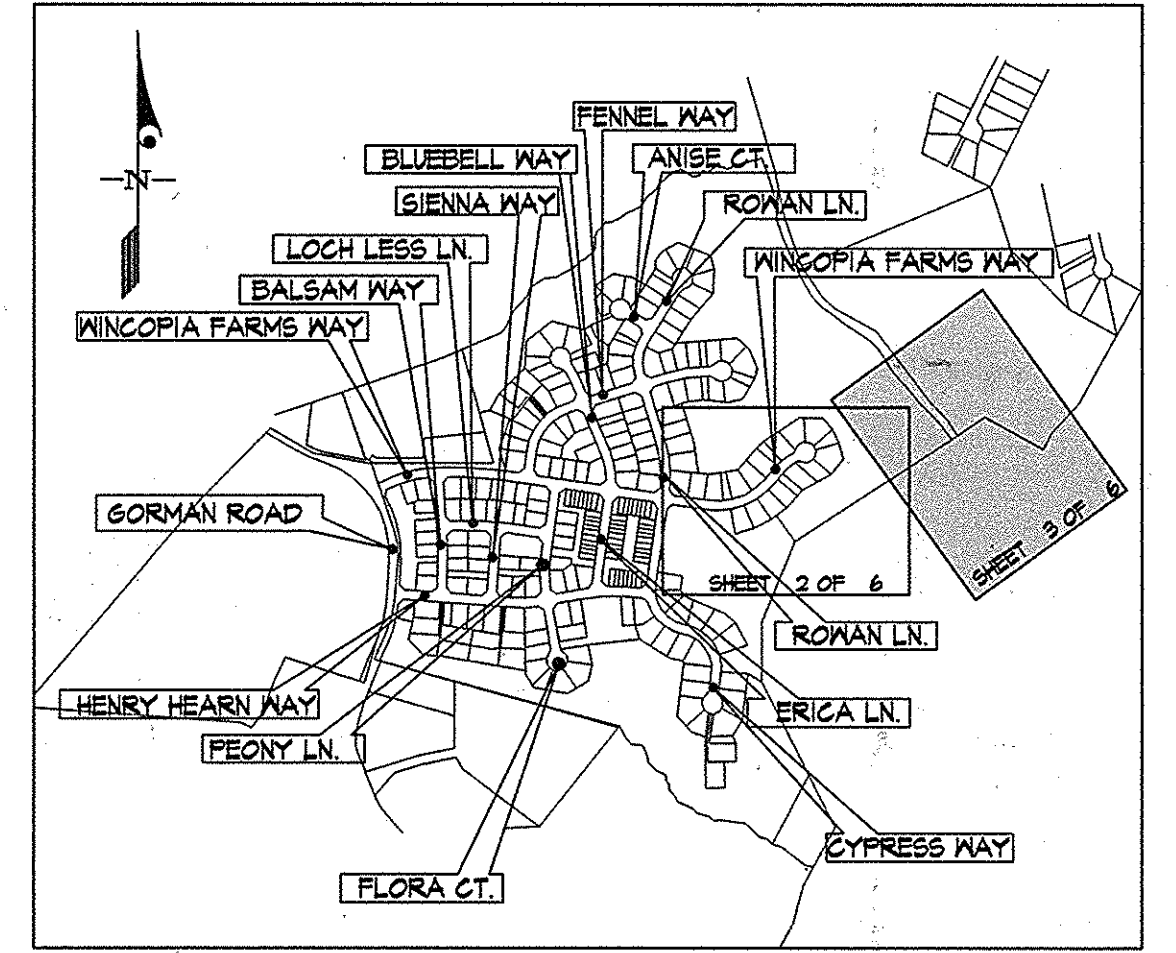
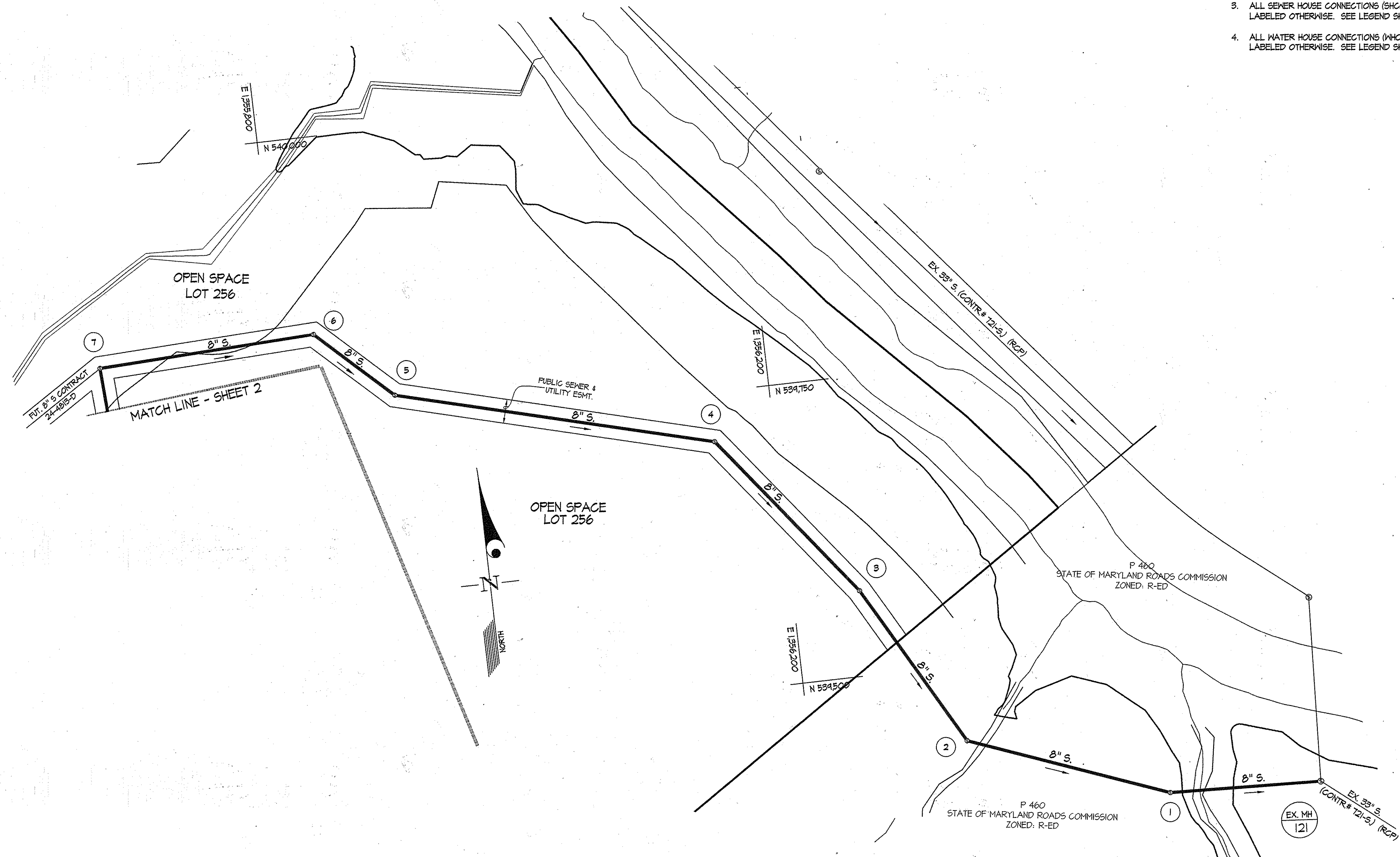
L:\CADD\DRAWINGS\08050\PIP-WAT-SEWER\FINAL\WGSU\PHASE 2\08050-PWS-PLAN 2-3.dwg
PLOT DATE: 3/7/2014 11:50 AM. LAST SAVED: 3/7/2014 11:23 AM. PLOTTED BY: Tony Loggner

DEPARTMENT OF PUBLIC WORKS HOWARD COUNTY, MARYLAND 	DEPARTMENT OF PLANNING AND ZONING HOWARD COUNTY, MARYLAND 	GLW GUTSCHICK LITTLE & WEBER, P.A. CIVIL ENGINEERS, LAND SURVEYORS, LAND PLANNERS, LANDSCAPE ARCHITECTS 3909 NATIONAL DRIVE - SUITE 250 - BURTONSVILLE OFFICE PARK BURTONSVILLE, MARYLAND 20886 TEL: 301-421-4024 BAL: 410-353-1820 DC/WA: 301-589-2524 FAX: 301-421-4186	DATE OCT., 2013	PROFESSIONAL CERTIFICATION I HEREBY CERTIFY THAT THESE PLANS WERE PREPARED OR APPROVED BY ME, AND THAT I AM A DULY LICENSED PROFESSIONAL ENGINEER UNDER THE LAWS OF THE STATE OF MARYLAND, LICENSE NO. 12975 EXP. DATE: MAY 26, 2014		97. MHA99A added AWL. CHANGED 8" WATER TO C900 PVC BY NO REVISION	DATE 10/10/14 01/14/14	WATER and SEWER EXTENSION PLAN 600' SCALE MAP NO. 47 BLOCK NO. 2,3,8&9 ZONING: R-5D	WINGCOPIA FARMS PHASE 2 LOTS 1 THRU 220 & OPEN SPACE LOTS 221 THRU 256 L 11388 P 725 HOWARD COUNTY, MARYLAND ELECTION DISTRICT No. 6 CONTRACT No. 24-4811-D TAX MAP: 47-3	SCALE 1"=50'
			G.L.W. No. 08052							SHEET 2 OF 6

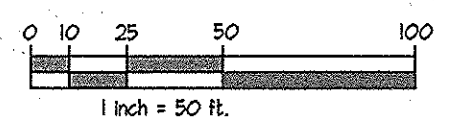
- NOTES:
- 3' PUBLIC WATER, SEWER, SIDEWALK AND UTILITY EASEMENT = 3' PUBLIC W&SU EMT. (ON MAIN ROADS)
 - 4' PUBLIC WATER, SEWER, SIDEWALK AND UTILITY EASEMENT = 4' W&SU EMT. (ON CUL-DE-SACS)
 - ALL SEWER HOUSE CONNECTIONS (SHCs) ARE 4" UNLESS LABELED OTHERWISE. SEE LEGEND SHEET I.
 - ALL WATER HOUSE CONNECTIONS (WHCs) ARE 1/2" UNLESS LABELED OTHERWISE. SEE LEGEND SHEET I.

SEWER MANHOLE LOCATIONS OPEN SPACE LOT 256		
MH No.	NAD '83/91 COORDINATES	
	NORTH	EAST
3	594571	1356256
4	594709	1356150
5	594777	1355940
6	594886	1355828
7	594828	1355644

SEWER MANHOLE LOCATIONS SHA PARCEL 460		
MH No.	NAD '83/91 COORDINATES	
	NORTH	EAST
1	594375	1356444
2	594487	1356330



KEY MAP
SCALE: 1" = 1,000'



PREPARED FOR:
BEAZER HOMES CORP.
8965 GUILFORD RD., SUITE 290
COLUMBIA, MD 21046
ATTN: BRIAN KNAUFF
410-381-3222

FOR WATER & SEWER PROFILES SEE SHEETS 4 THRU 6

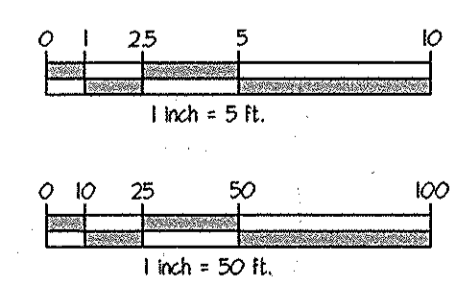
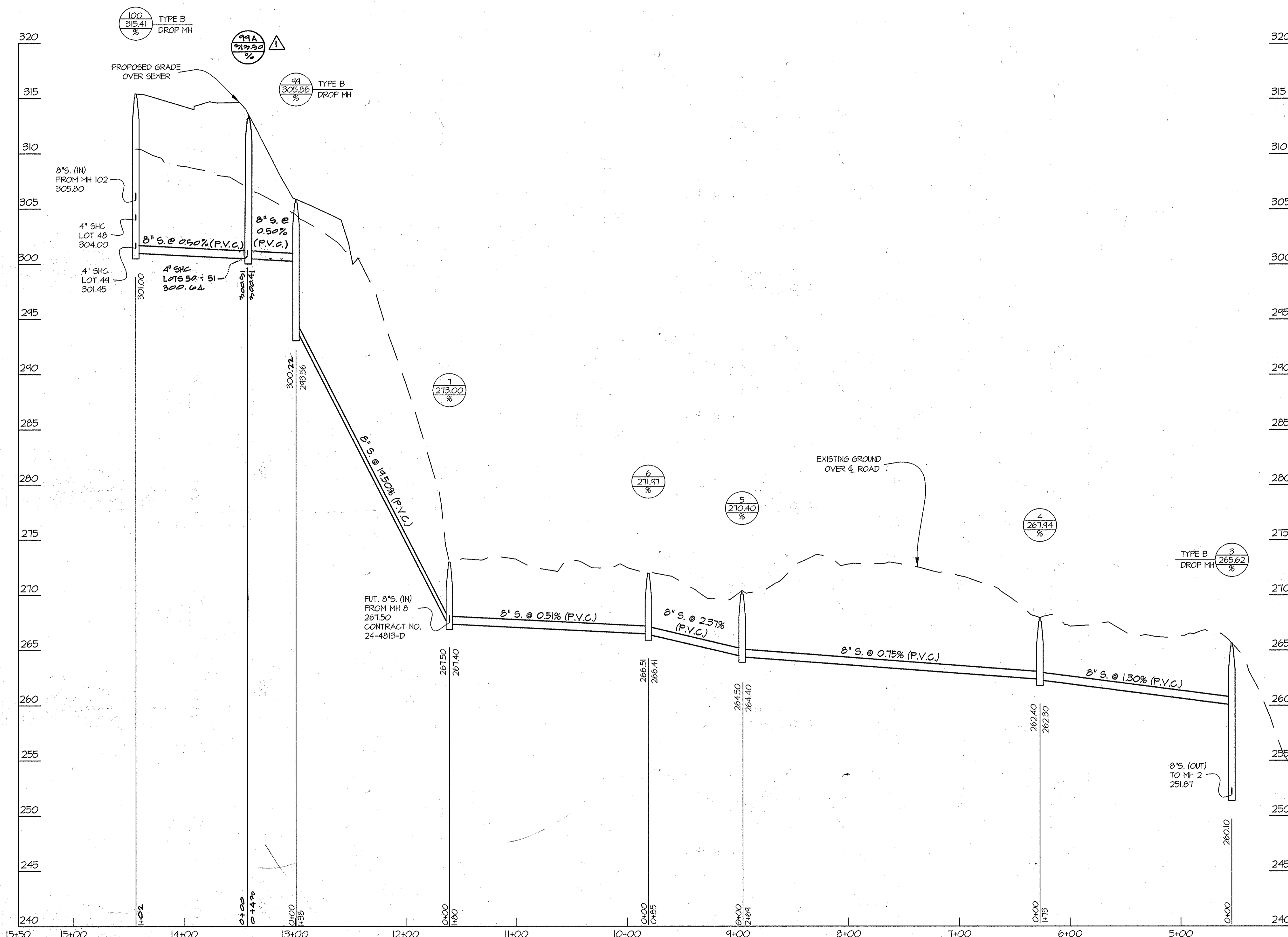
AS-BUILT 4-30-2015

DEPARTMENT OF PUBLIC WORKS HOWARD COUNTY, MARYLAND 	DEPARTMENT OF PLANNING AND ZONING HOWARD COUNTY, MARYLAND 	GLW GUTSCHICK LITTLE & WEBER, P.A. CIVIL ENGINEERS, LAND SURVEYORS, LAND PLANNERS, LANDSCAPE ARCHITECTS 3909 NATIONAL DRIVE - SUITE 250 - BURTONSVILLE OFFICE PARK BURTONSVILLE, MARYLAND 20886 TEL: 301-421-4024 BAL: 410-880-1820 DC/VA: 301-989-2524 FAX: 301-421-4188	DATE OCT., 2013	PROFESSIONAL CERTIFICATION I HEREBY CERTIFY THAT THESE PLANS WERE PREPARED OR APPROVED BY ME, AND THAT I AM A DULY LICENSED PROFESSIONAL ENGINEER UNDER THE LAWS OF THE STATE OF MARYLAND, LICENSE NO. 12975 EXP. DATE: MAY 26, 2014 	BY NO. REVISION DATE	WATER and SEWER EXTENSION PLAN 600' SCALE MAP NO. 47 BLOCK NO. 2,3,8&9 ZONING: R-ED	WINCOPIA FARMS PHASE 2 LOTS 1 THRU 220 & OPEN SPACE LOTS 221 THRU 256 HOWARD COUNTY, MARYLAND ELECTION DISTRICT No. 6 CONTRACT No. 24-4311-D TAX MAP: 47-3	SCALE 1"=50'
			G.L.W. No. 08052					SHEET 3 OF 6

L:\CADD\PLANNING\08052\08052-01-01-SEWER\08052-01-01-SEWER-PHASE 2\08052-01-01-SEWER-PHASE 2-PLAN 2-3.dwg
 PLOTTED: 10/29/2013 10:24 AM, LAST SAVED: 10/28/2013 7:57 AM, PLOTTED BY: Gerni Thompson

LOTS 50 / 51

OPEN SPACE LOT 256



FOR WATER & SEWER PLAN VIEW SEE SHEETS 2 & 3

PROFILE SCALES:
HOR. 1" = 50'
VERT. 1" = 5'

PREPARED FOR:
BEAZER HOMES CORP.
8965 GUILFORD RD., SUITE 290
COLUMBIA, MD 21046
ATTN: BRIAN KNAUFF
410-381-3222

AS-BUILT: 4-30-2015

L:\CADD\BIRMINGHAM\BIRMINGHAM\WATER\SEWER\PHASE 2\08050-FINIS-4.dwg
PLOT: 10/22/2013 10:29 AM. LAST SAVED: 10/29/2013 8:38 AM. PLOTTED BY: Cirro, Teeppye

DEPARTMENT OF PUBLIC WORKS
HOWARD COUNTY, MARYLAND

Steve C. Green 11/14/13
CHIEF, BUREAU OF UTILITIES DATE

DEPARTMENT OF PLANNING AND ZONING
HOWARD COUNTY, MARYLAND

Charles E. G... .. 12-6-13
CHIEF, DEVELOPMENT ENGINEERING DIVISION DATE

GLWGUTSCHICK LITTLE & WEBER, P.A.
CIVIL ENGINEERS, LAND SURVEYORS, LAND PLANNERS, LANDSCAPE ARCHITECTS
3909 NATIONAL DRIVE - SUITE 250 - BURTONSVILLE OFFICE PARK
BURTONSVILLE, MARYLAND 20886
TEL: 301-421-4024 BALT: 410-880-1820 DC/VA: 301-989-2524 FAX: 301-421-4186

DATE
OCT., 2013

G.L.W. No.
08052

PROFESSIONAL CERTIFICATION

I HEREBY CERTIFY THAT THESE PLANS WERE PREPARED OR APPROVED BY ME, AND THAT I AM A DULY LICENSED PROFESSIONAL ENGINEER UNDER THE LAWS OF THE STATE OF MARYLAND, LICENSE NO. 12975, EXP. DATE: MAY 26, 2014

11-13-13



BY	NO	REVISION	DATE
gt	1	MH 99A added	10/10/14

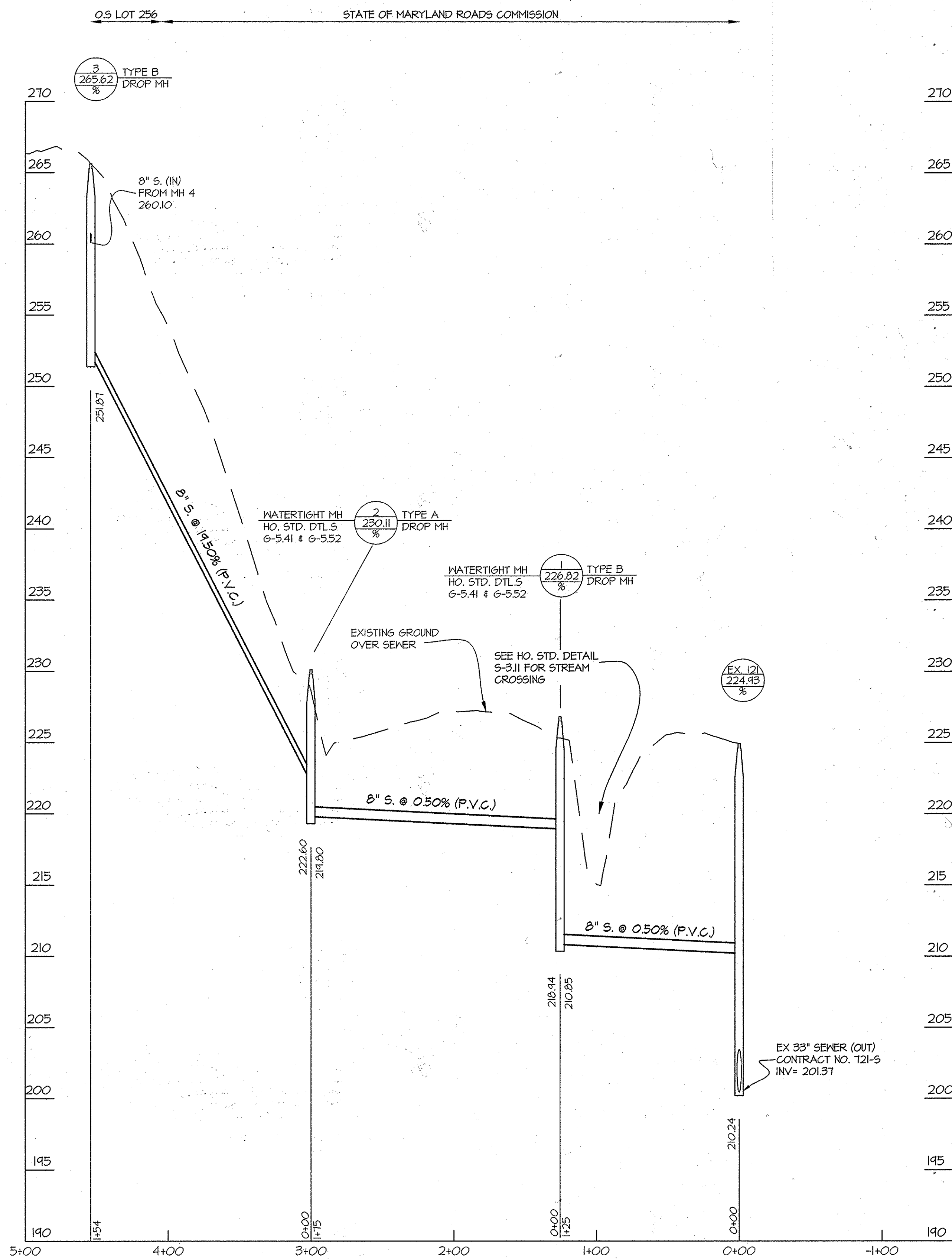
SEWER PROFILES

600' SCALE MAP NO. 47 BLOCK NO. 2,3,8&9 ZONING: R-ED

WINCOPIA FARMS
PHASE 2
LOTS 1 THRU 220 &
OPEN SPACE LOTS 221 THRU 256
HOWARD COUNTY, MARYLAND
ELECTION DISTRICT No. 6
CONTRACT No. 24-4811-D TAX MAP: 47-3

SCALE AS SHOWN

SHEET 5 OF 6



LOT 43		
FROM	TO	DISTANCE
SHC	MH 104	18'
SHC	F.H. (F)	21'
SHC	WHC LOT 43	22'
WHC	MH 104	24'
WHC	F.H. (F)	29'
WHC	SHC LOT 43	22'

LOT 51		
FROM	TO	DISTANCE
SHC	MH 99A	9'
SHC	MH 100	103'
SHC	WHC LOT 51	83'
WHC	MH 100	63.5'
WHC	MH 99A	89'

LOT 44		
FROM	TO	DISTANCE
SHC	MH 106	82.5'
SHC	F.H. (F)	65'
WHC	F.H. (F)	38.5'
WHC	SHC LOT 43	45.5'

LOT 52		
FROM	TO	DISTANCE
SHC	F.H. (G)	50'
SHC	MH 100	67'
SHC	WHC LOT 52	44.5'
WHC	MH 102	39'
WHC	F.H. (G)	55'
WHC	SHC LOT 52	44.5'

LOT 45		
FROM	TO	DISTANCE
SHC	MH 103	21'
SHC	WHC LOT 45	22.5'
WHC	MH 103	29'
WHC	SHC LOT 44	42.5'

LOT 53		
FROM	TO	DISTANCE
SHC	MH 102	64'
SHC	INLET MH 138	35'
WHC	MH 103	111'
WHC	SHC LOT 53	27'
WHC	SHC LOT 46	59'

LOT 46		
FROM	TO	DISTANCE
SHC	MH 102	46.5'
SHC	MH 103	44.5'
SHC	WHC LOT 46	42.5'
WHC	MH 103	54.5'
WHC	SHC LOT 45	51.5'
WHC	SHC LOT 54	58'

LOT 54		
FROM	TO	DISTANCE
SHC	MH 103	67'
SHC	WHC LOT 53	48.5'
WHC	MH 103	42'
WHC	WHC LOT 45	69.5'
WHC	SHC LOT 54	34.5'

LOT 47		
FROM	TO	DISTANCE
SHC	F.H. (G)	17'
SHC	WHC LOT 47	44.5'
WHC	MH 102	27.5'
WHC	F.H. (G)	57'
WHC	SHC LOT 53	72'

LOT 55		
FROM	TO	DISTANCE
SHC	MH 104	86'
SHC	MH 103	64'
SHC	WHC LOT 54	67'
WHC	MH 104	45.5'
WHC	SHC LOT 55	49'
WHC	WHC LOT 44	62'

LOT 48		
FROM	TO	DISTANCE
SHC	MH 100	54'
SHC	WHC LOT 48	21.5'
WHC	MH 100	58.5'
WHC	F.H. (G)	19.5'

LOT 56		
FROM	TO	DISTANCE
SHC	MH 104	93.5'
SHC	MH 106	48'
WHC	MH 106	46'
WHC	SHC LOT 56	50'

LOT 49		
FROM	TO	DISTANCE
SHC	INLET 133	36'
SHC	MH 100	57'
SHC	WHC LOT 49	26'
WHC	MH 100	54'
WHC	SHC LOT 48	35.5'

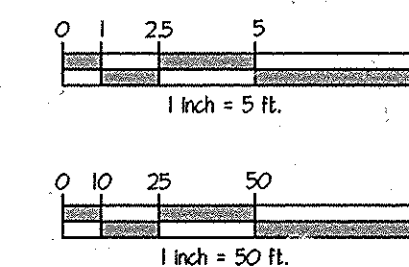
LOT 57		
FROM	TO	DISTANCE
SHC	MH 107	90'
SHC	WHC LOT 56	54'
WHC	MH 107	55'
WHC	SHC LOT 57	42'
WHC	ELECTRICAL TRANSFORMER 47	

LOT 50		
FROM	TO	DISTANCE
SHC	MH 99A	13'
SHC	WHC LOT 50	54'
WHC	MH 99A	60.5'
WHC	MH 100	64'
WHC	INLET 133	33'

LOT 58		
FROM	TO	DISTANCE
SHC	MH 107	39'
SHC	F.H. (E)	80'
SHC	WHC LOT 58	68'
WHC	MH 107	79'
WHC	F.H. (E)	17.5'
WHC	SHC LOT 58	42'

FOR WATER & SEWER PLAN VIEW SEE SHEETS 2 & 3

PROFILE SCALES:
HOR. 1" = 50'
VERT. 1" = 5'



PREPARED FOR:
BEAZER HOMES CORP.
8965 GUILFORD RD., SUITE 290
COLUMBIA, MD 21046
ATTN: BRIAN KNAUFF
410-381-3222

AS-BUILT 4-30-2015

L:\CADD\PROJECTS\08052-PUB-WWT-SEWER\PLAN - WWSA PHASE 2\08052-FIG-4.dwg, PLOTTED: 10/29/2013 10:30 AM, LAST SAVED: 10/29/2013 8:36 AM, PLOTTED BY: Cirina, Teeppye

<p>DEPARTMENT OF PUBLIC WORKS HOWARD COUNTY, MARYLAND</p> <p><i>Signature</i> CHIEF, BUREAU OF UTILITIES</p>	<p>DEPARTMENT OF PLANNING AND ZONING HOWARD COUNTY, MARYLAND</p> <p><i>Signature</i> 12-6-13 CHIEF, DEVELOPMENT ENGINEERING DIVISION</p>	<p>GLW GUTSCHICK LITTLE & WEBER, P.A. CIVIL ENGINEERS, LAND SURVEYORS, LAND PLANNERS, LANDSCAPE ARCHITECTS 3909 NATIONAL DRIVE - SUITE 250 - BURTONSVILLE OFFICE PARK BURTONSVILLE, MARYLAND 20886 TEL: 301-421-4024 BALT: 410-880-1820 DC/VA: 301-989-2524 FAX: 301-421-4186</p>	<p>DATE OCT. 2013 G.L.W. No. 08052</p>	<p>PROFESSIONAL CERTIFICATION I HEREBY CERTIFY THAT THESE PLANS WERE PREPARED OR APPROVED BY ME, AND THAT I AM A DULY LICENSED PROFESSIONAL ENGINEER UNDER THE LAWS OF THE STATE OF MARYLAND, LICENSE NO. 12975 EXP. DATE: MAY 26, 2014</p> <p><i>Signature</i> 11-13-13</p>	<table border="1" style="width: 100%; border-collapse: collapse;"> <tr> <th>BY</th> <th>NO</th> <th>REVISION</th> <th>DATE</th> </tr> <tr> <td> </td> <td> </td> <td> </td> <td> </td> </tr> </table>	BY	NO	REVISION	DATE					<p style="text-align: center;">SEWER PROFILE</p> <p>600' SCALE MAP NO. 47 BLOCK NO. 2,3,8&9 ZONING: R-ED</p>	<p style="text-align: center;">WINCOPIA FARMS</p> <p style="text-align: center;">PHASE 2 LOTS 1 THRU 220 & OPEN SPACE LOTS 221 THRU 526 L 11388 P 725 HOWARD COUNTY, MARYLAND ELECTION DISTRICT No. 6 CONTRACT No. 24-4811-D TAX MAP: 47-3</p>	<p>SCALE AS SHOWN</p> <p>SHEET 6 OF 6</p>
BY	NO	REVISION	DATE													