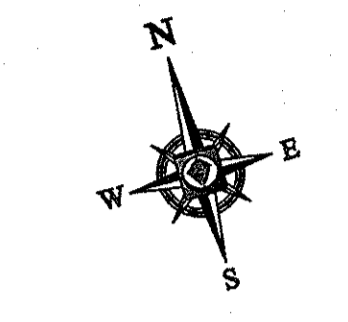


FITTING CHART		
FITTING	WATER MAIN CL STATION	OFFSET
1/32 H.B. W/ 1.01" VERT. ROTATION	11+03.03	WILDERNESS LN
8"x8" TEE, & (3) 8" VALVE	11+81.70	WILDERNESS LN
1/32 H.B.	14+16.82	WILDERNESS LN
1/32 H.B.	14+81.72	WILDERNESS LN
8"x6" TEE & 6" VALVE	15+70.34	WILDERNESS LN
FIRE HYDRANT	15+70.34	WILDERNESS LN 23.32' R
8" VALVE	16+82.23	WILDERNESS LN
8" TEE & (3) 8" VALVE	19+34.91	WILDERNESS LN
1/16 H.B.	19+16.08	WILDERNESS LN
8"x6" TEE & 6" VALVE	19+40.24	WILDERNESS LN
FIRE HYDRANT	19+40.24	WILDERNESS LN 26.82' R
1/8 H.B. W/ 2.43" VERT. ROTATION	20+94.16	WILDERNESS LN
1/8 H.B.	21+08.30	WILDERNESS LN
1/32 H.B.	19+89.57	KNOWLEDGE DRIVE
1/32 H.B. W/ 0.24" VERT. ROTATION	19+69.57	KNOWLEDGE DRIVE
8"x6" TEE & 6" VALVE	19+50.19	KNOWLEDGE DRIVE
FIRE HYDRANT	19+50.19	KNOWLEDGE DRIVE 28.05' L
1/32 H.B.	19+14.01	KNOWLEDGE DRIVE
1/32 H.B.	19+94.39	KNOWLEDGE DRIVE
1/32 H.B.	18+70.42	KNOWLEDGE DRIVE
1/32 H.B. W/ 0.56" VERT. ROTATION	18+50.42	KNOWLEDGE DRIVE
8"x6" TEE, 6" VALVE & 8" VALVE	15+75.67	KNOWLEDGE DRIVE
FIRE HYDRANT	15+75.67	KNOWLEDGE DRIVE 15.16' L
1/32 H.B.	13+05.09	KNOWLEDGE DRIVE
1/32 H.B.	12+90.02	KNOWLEDGE DRIVE
1/32 H.B.	12+76.11	KNOWLEDGE DRIVE
8"x6" TEE & 6" VALVE	12+41.55	KNOWLEDGE DRIVE
FIRE HYDRANT	12+41.55	KNOWLEDGE DRIVE 18.98' R
1/16 H.B.	11+74.60	KNOWLEDGE DRIVE
8"x8" TEE & (3) 8" VALVE	11+67.17	KNOWLEDGE DRIVE
1/32 H.B.	11+19.63	KNOWLEDGE DRIVE
1/32 H.B.	10+94.05	KNOWLEDGE DRIVE
8"x6" TEE & 6" VALVE	10+54.14	KNOWLEDGE DRIVE
FIRE HYDRANT	10+54.14	KNOWLEDGE DRIVE 20.25' L
1/16 H.B. W/ 11.25" ROTATION	10+13.00	SIMPLICITY CT.
1/32 W.B.	10+18.00	SIMPLICITY CT.
8" PLUG AND BUTTRESS	11+33.28	SIMPLICITY CT.
12" CAP & BUTTRESS	18+33	GORMAN RD.
12"x8" TAPPING SLEEVE, (2) 12" VALVE & (1) 8" VALVE	18+26.95	GORMAN RD.
12"x6" TEE & 6" VALVE	17+98.19	GORMAN RD.
FIRE HYDRANT	17+98.19	GORMAN RD 26.00' L
1/32 H.B. W/ 0.50" VERT. ROTATION	10+93.24	WATERLINE 'A'
1/8 H.B. W. 3.05" VERT. ROTATION	11+36.03	WATER MAIN 'A'
1/8 H.B. W. 6.63" VERT. ROTATION	11+52.56	WATER MAIN 'A'
1/8 H.B. W/ 11.25" VERT. ROTATION	12+63.28	WATER MAIN 'A'
1/8 H.B. W. 6.16" VERT. ROTATION	12+76.96	WATER MAIN 'A'
1/32 V.B. W. 4.12" HOR. ROTATION	13+17	WATER MAIN 'A'
1/8 V.B.	13+34	WATER MAIN 'A'
1/32 V.B. W. 2.5" HOR. ROTATION	13+92	WATER MAIN 'A'
1/8 H.B. W. 3.0" VERT. ROTATION	14+70.67	WATER MAIN 'A'



PARCEL 1032 HOWARD COUNTY BOARD OF EDUCATION LIBER 03573 FOLIO 0401 LAND USE: E ZONE: RED

PARCEL 100 - PLAT 12921 COLETTE M. POUNTNAY AND THOMAS C. POUNTNAY T/V LIBER 0644 FOLIO 0322 LAND USE: R ZONE: RED

PROP. FIRE HYDRANT WL STA. 17+72.26 0 R B.L.E. = 348.63 BL = 6.50 AND CONTINUITY TEST STATION. SEE DETAIL W/15

SKETCH 'B'

SKETCH 'G'

PARCEL 3 - PLAT 15304 EMERSON COMMUNITY ASSOCIATION INC. LIBER 03669 FOLIO 0702 LAND USE: R ZONE: RSC

DEPARTMENT OF PUBLIC WORKS HOWARD COUNTY, MARYLAND
 Chief, Bureau of Utilities
 Date: 10/21/14

DEPARTMENT OF PLANNING & ZONING HOWARD COUNTY, MARYLAND
 Chief, Development Engineering Division
 Date: 10-30-14

BOHLER ENGINEERING
 901 DULANEY VALLEY ROAD, SUITE 801
 TOWSON, MARYLAND 21204
 Phone: (410) 821-7600
 Fax: (410) 821-7987
 www.BohlerEngineering.com

ROWE ENGINEERING
 PROFESSIONAL ENGINEER
 I, BRANDON R. ROWE, HEREBY CERTIFY THAT THE DOCUMENTS WERE PREPARED OR APPROVED BY ME, AND THAT I AM A LICENSED PROFESSIONAL ENGINEER UNDER THE LAWS OF THE STATE OF MARYLAND, LICENSE NO. 40986, EXPIRATION DATE: 7/30/25

DES. J.A./A.V.G.	
DRN. A.V.G.	
CHK. B.R.R.	
DATE: 10/21/14	
REV. DATE DESCRIPTION	
5/15/15	5/15/15 REDLINE REVISION TO ADD CATHODIC PROTECTION INFORMATION TO WATER MAIN CROSSING THE STREAM

PUBLIC 12" & 8" WATER MAIN & PUBLIC 8" SEWER MAIN PLAN
 PARCEL NO. 4
 600' SCALE MAP NO. 47 BLOCK NO. N/A

WALDEN WOODS (BUILDABLE LOTS 1-97 & OPEN SPACE LOTS 98-102) 6TH ELECTION DISTRICT HOWARD COUNTY, MARYLAND CONTRACT NO.: 24-4784-D
 SCALE: 1"=50'
 SHEET 2 OF 10

- LEGEND**
- *— PROPOSED FIRE HYDRANT
 - *— PROPOSED WATER MAIN
 - *— PROPOSED SANITARY SEWER
 - *— PROPOSED WHC'S
 - *— PROPOSED SHC'S
 - - - EXISTING STORM DRAIN
 - - - EXISTING WATER MAIN
 - - - EXISTING SANITARY SEWER
 - - - EXISTING SANITARY SEWER
 - *— PROPOSED SANITARY SEWER
 - *— PROPOSED WATER VALVE, TEE & CROSS
 - *— PROPOSED TEST PIT

EMERSON - SECTION 1 - AREA 1 OPEN SPACE - LOT 36 PLAT 1697 DEDICATED TO HOWARD COUNTY RECREATION AND PARKS LIBER 07015 FOLIO 0692 LAND USE: R ZONE: RED

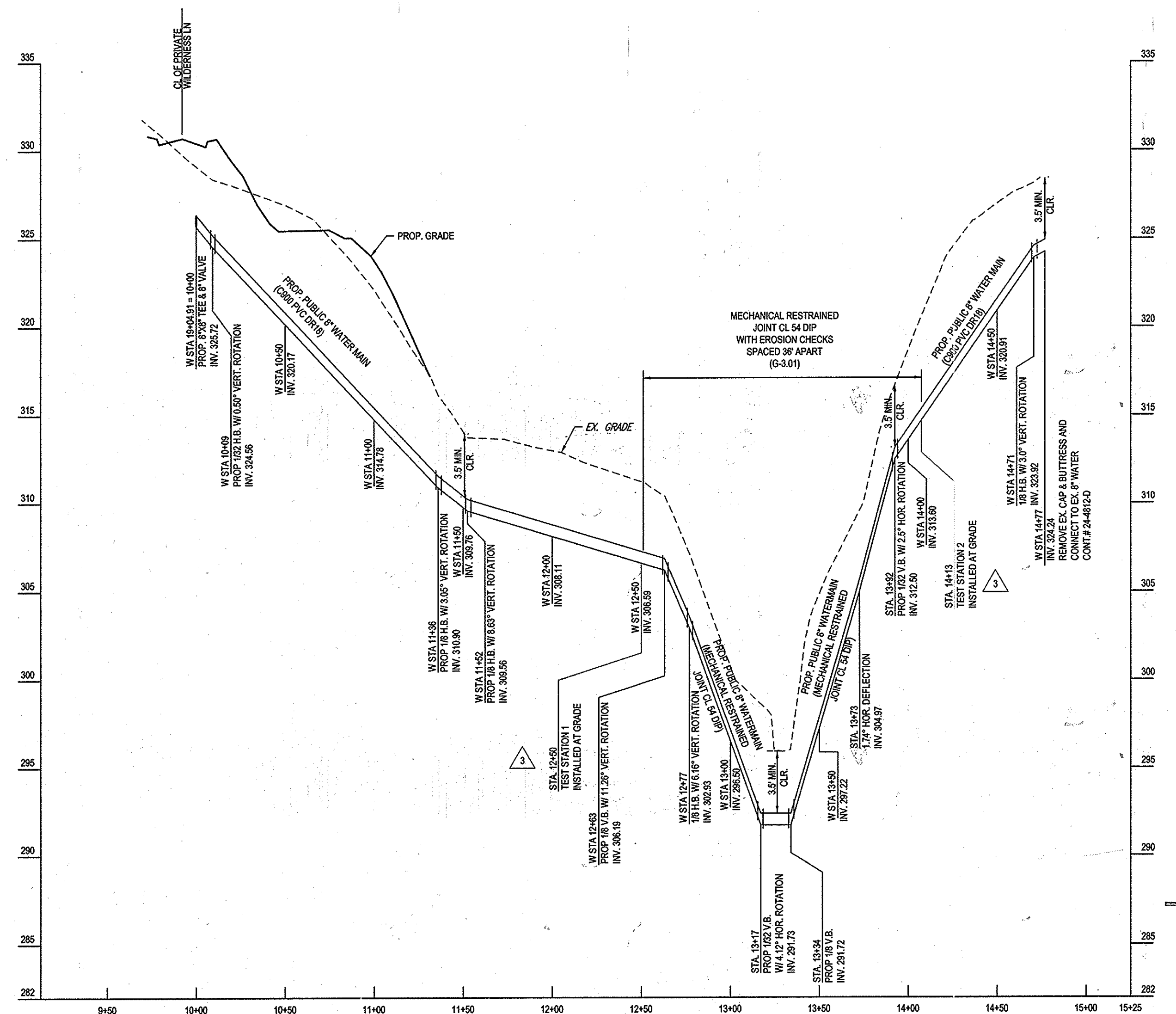
NOTE: SEE SHEET 8 FOR SKETCHES

STATE OF MARYLAND PROFESSIONAL ENGINEER

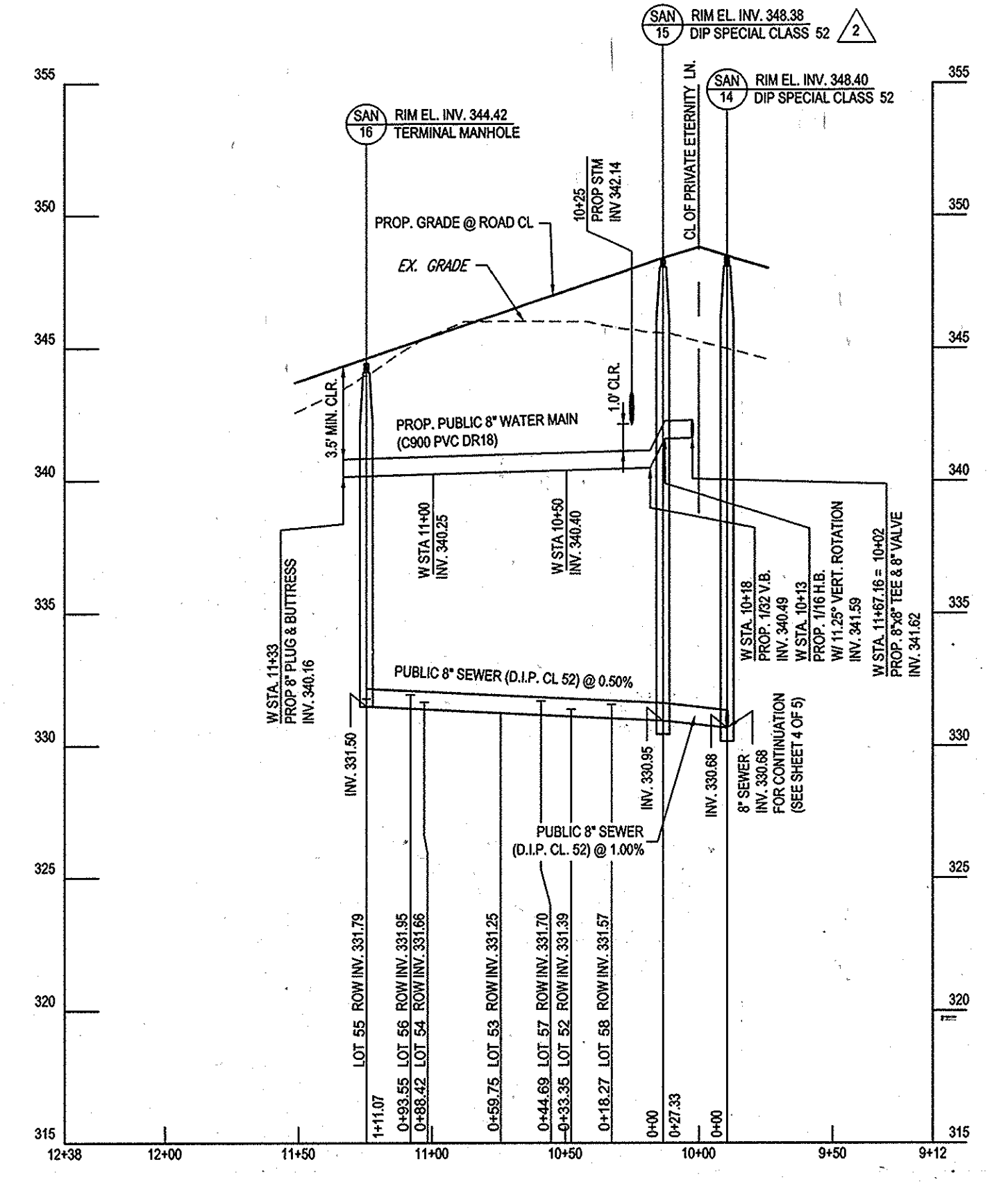
FOR REVIEW ONLY

2/1/15

50 25 12.5 0 50
1"=50'



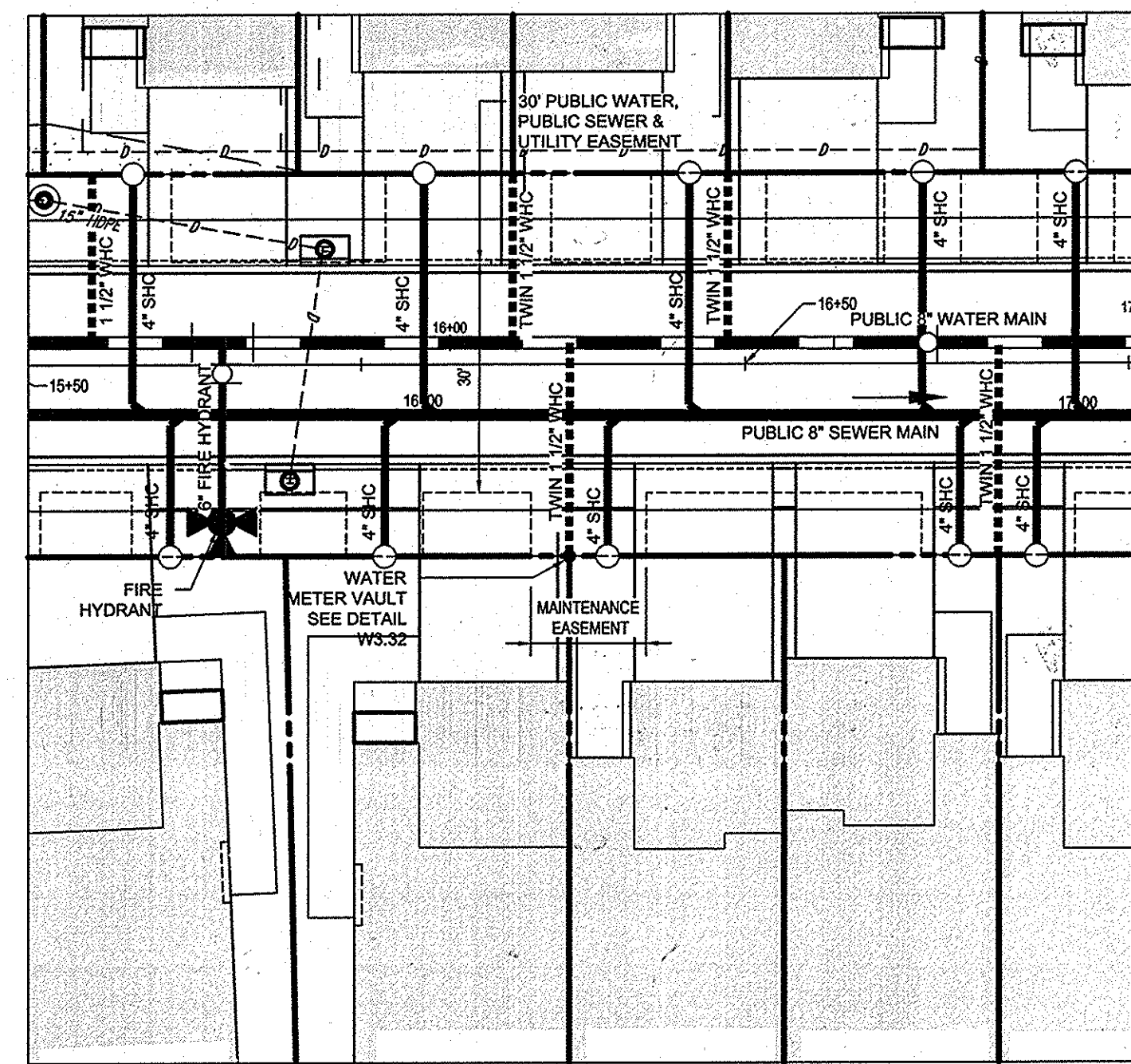
PUBLIC 8" WATER MAIN 'A' PROFILES
SCALE: 1" = 60' HORIZONTAL
1" = 5' VERTICAL



PUBLIC 8" WATER MAIN & PUBLIC 8" SEWER MAIN PROFILES @ SIMPLICITY CT. (PRIVATE)
SCALE: 1" = 60' HORIZONTAL
1" = 5' VERTICAL

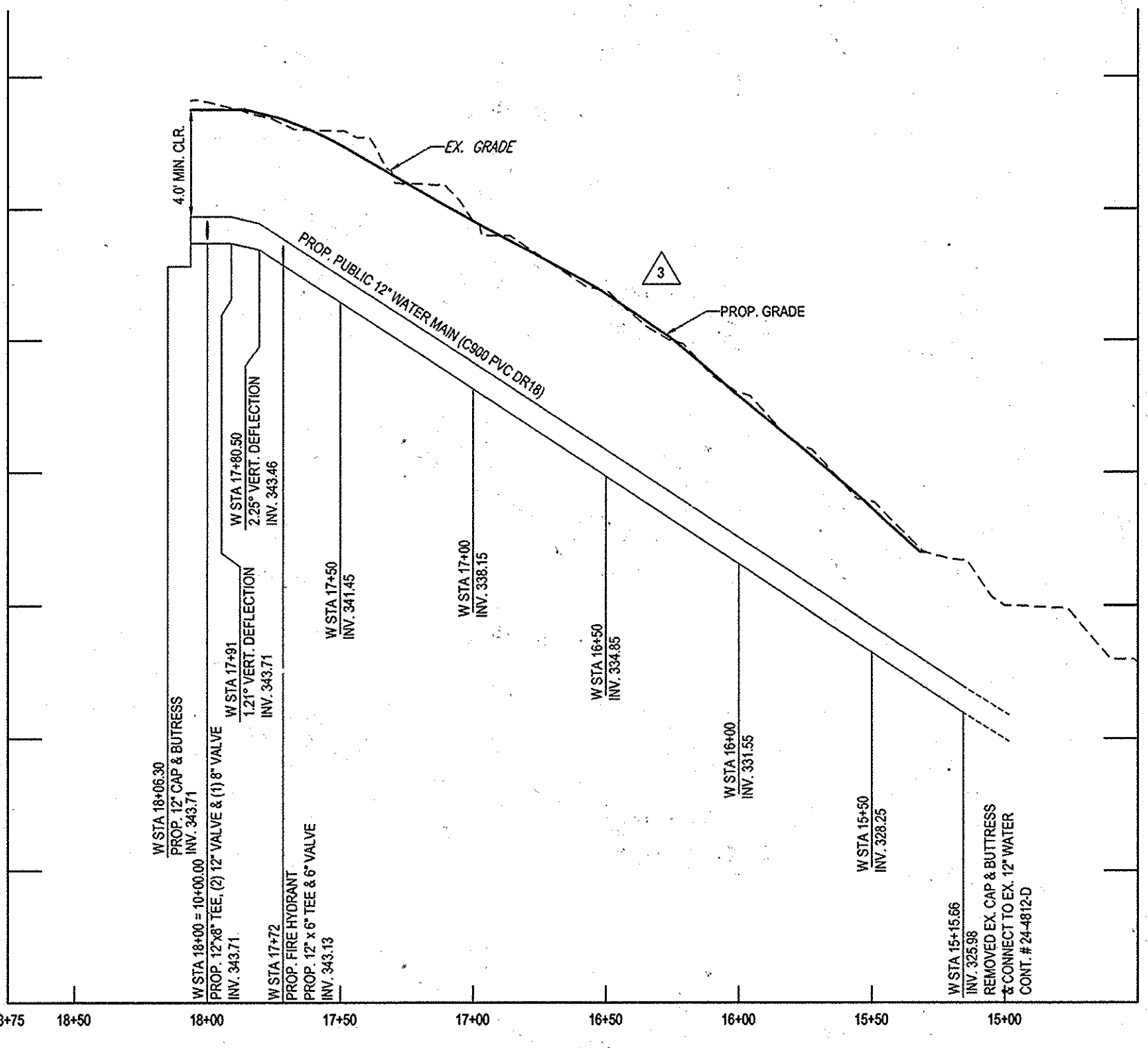
SANITARY STRUCTURE SCHEDULE					
STRUCTURE No.	LOCATION STATION & OFFSET	RIM ELEV. (FT.)	INV. IN	INV. OUT	COMMENTS
2	538157.7931, 1354424.0612	302.59	295.50	291.75	HOWARD COUNTY STD. DETAIL G.5.12 WATER TIGHT FRAME & COVER STD. DETAIL G.5.52
3	538131.5890, 1354416.6430	307.94	303.00	298.23	HOWARD COUNTY STD. DETAIL G.5.12 (TYPE "B" DROP MANHOLE)
4	538167.7244, 1354288.9657	311.46	306.50	306.50	HOWARD COUNTY STD. DETAIL G.5.12 (TYPE "A" DROP MANHOLE)
5	WILDERNESS LN STA. 19+04.14, -16.95'	330.47	312.82	312.82	HOWARD COUNTY STD. DETAIL G.5.12
6	WILDERNESS LN STA. 19+07.08, 3.59'	330.34	313.24	313.24	HOWARD COUNTY STD. DETAIL G.5.12
7	WILDERNESS LN STA. 19+16.47, 2.06'	330.62	313.71	313.71	HOWARD COUNTY STD. DETAIL G.5.12
8	WILDERNESS LN STA. 20+97.00, -15.3'	337.54	322.50	322.50	HOWARD COUNTY STD. DETAIL G.5.12
9	KNOWLEDGE DR STA. 19+87.11, -1.00'	336.90	323.32	323.32	HOWARD COUNTY STD. DETAIL G.5.12
10	KNOWLEDGE DR STA. 19+18.00, -3.14'	335.92	323.99	323.99	HOWARD COUNTY STD. DETAIL G.5.12
11	KNOWLEDGE DR STA. 18+54.27, -1.12'	335.86	324.62	324.62	HOWARD COUNTY STD. DETAIL G.5.12
12	KNOWLEDGE DR STA. 15+47.06, -7.00'	339.93	326.92	326.92	HOWARD COUNTY STD. DETAIL G.5.12
13	KNOWLEDGE DR STA. 12+86.07, -3.92'	346.41	329.72	329.72	HOWARD COUNTY STD. DETAIL G.5.12
14	KNOWLEDGE DR STA. 11+86.21, -10.12'	348.40	330.68	330.68	HOWARD COUNTY STD. DETAIL G.5.12
15	SIMPLICITY CT STA. 10+13.44, -0.62'	348.38	330.95	330.95	HOWARD COUNTY STD. DETAIL G.5.12
16	SIMPLICITY CT STA. 11+24.52, -6.47'	344.42	331.50	331.50	HOWARD COUNTY STD. DETAIL G.5.12 (TERMINAL MANHOLE)
17	WILDERNESS LN STA. 14+60.45, 4.84'	340.40	324.80	324.80	HOWARD COUNTY STD. DETAIL G.5.12
18	WILDERNESS LN STA. 11+43.48, 6.77'	347.63	332.00	332.00	HOWARD COUNTY STD. DETAIL G.5.12 (TERMINAL MANHOLE)
19	WILDERNESS LN 10+30.08, 3.6'	329.65	316.43	316.43	HOWARD COUNTY STD. DETAIL G.5.12

MULTIPLE SHC ADJUSTMENTS

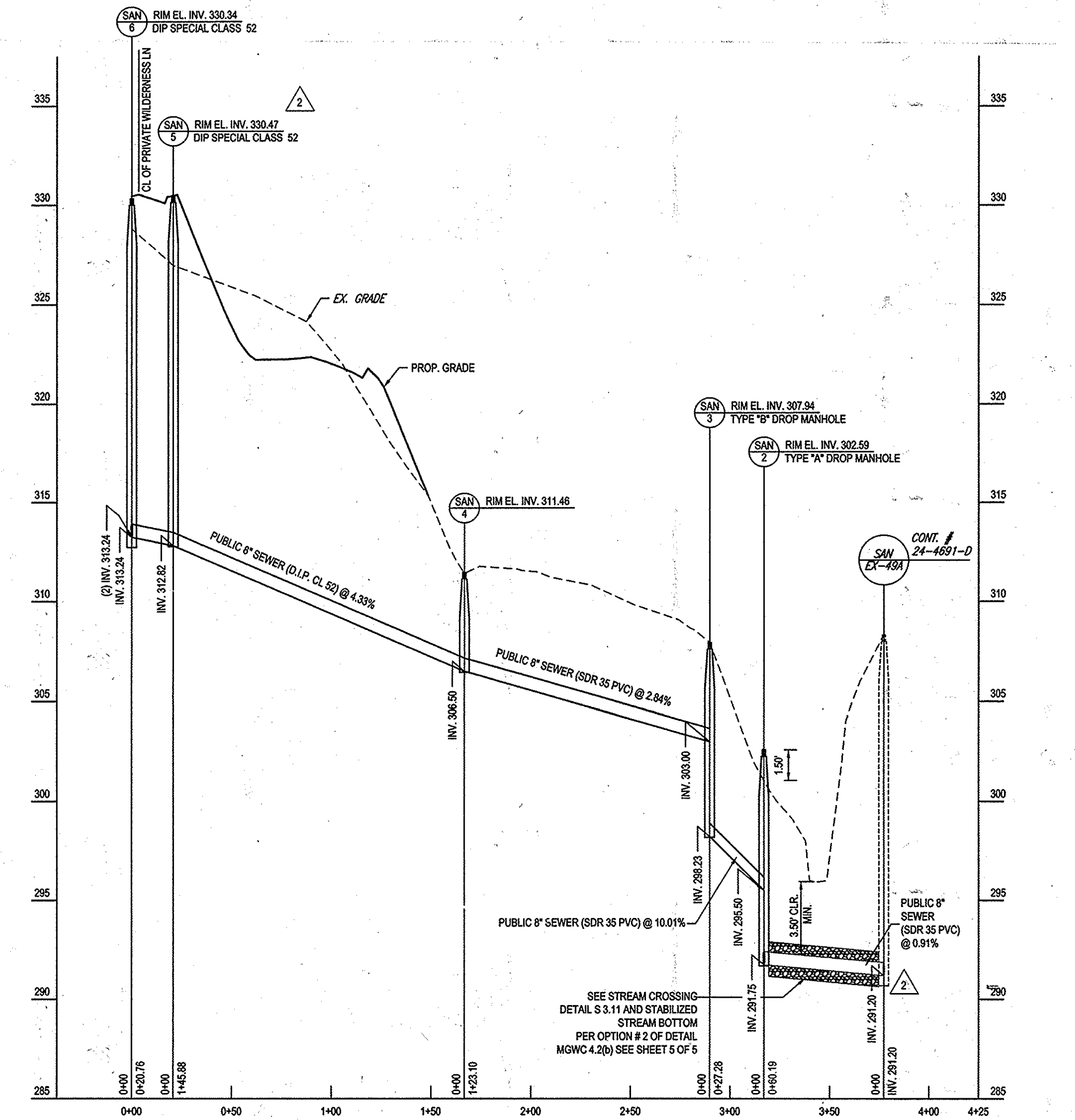


TYPICAL WATER & SEWER HOUSE CONNECTION METER SETTING
SCALE: 1" = 20'

- NOTES:**
- ALL DUCTILE IRON WATER MAINS AND FITTINGS TO BE CLASS 24 WITH CATHODIC PROTECTION FOR CORROSION CONTROL. PER SPECIFICATIONS AND AS SHOWN ON PLANS, AND DO NOT POLYETHYLENE ENCASE WATER MAINS.
 - BOND ALL NEW DUCTILE IRON PIPE JOINTS.
 - INSTALL SEPARATOR MESH ON WATER MAIN AT EXISTING UTILITY CROSSING IF THERE IS LESS THAN 12 INCHES OF SPACING BETWEEN THEM. SEE DETAIL C-4.06.
 - DUCTILE IRON PIPE THAT WILL BE IN DIRECT CONTACT WITH POURED CONCRETE, SUCH AS THROST BLOCK ETC., SHALL BE FIELD COATED WITH 20 MILS OF ROYSTON R-28 MASTIC OF APPROVED EQUAL.
 - DO NOT SET TEST STATION IN ROADWAY. PLACE TEST BOX IN NON-PAVED AREA NEXT TO ROADWAY. ROUTE ALL WIRES THROUGH PVC CONDUIT TO FINAL BOX LOCATION.



12" WATER MAIN @ GORMAN ROAD
SCALE: 1" = 60' HORIZONTAL
1" = 5' VERTICAL



PUBLIC 8" SEWER MAIN PROFILES
SCALE: 1" = 60' HORIZONTAL
1" = 5' VERTICAL

DEPARTMENT OF PUBLIC WORKS HOWARD COUNTY, MARYLAND
S. C. C. Chief, Bureau of Utilities
DATE: 7/24/15

DEPARTMENT OF PLANNING & ZONING HOWARD COUNTY, MARYLAND
E. D. Chief, Development Engineering Division
DATE: 7-24-15

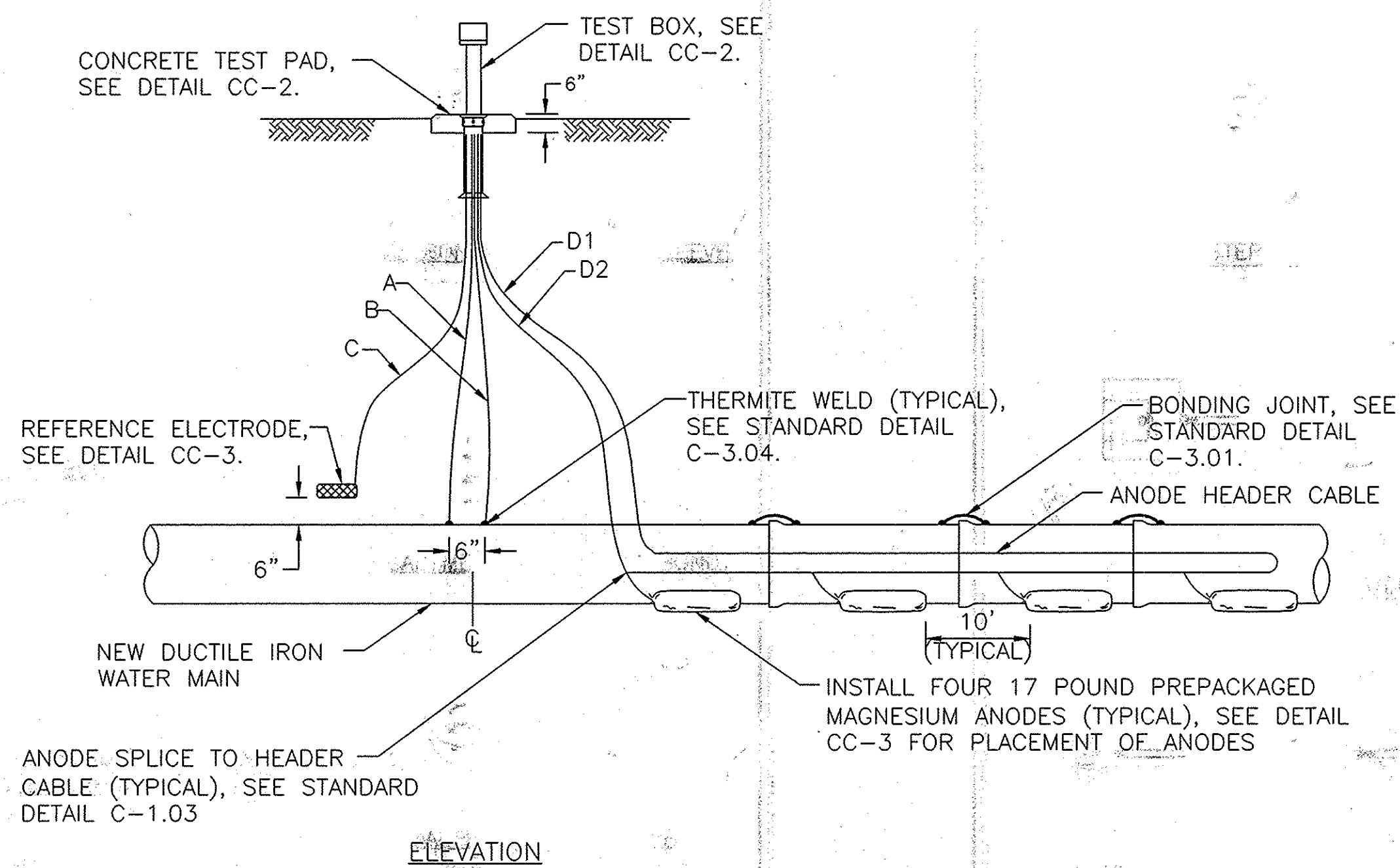
BOHLER ENGINEERING
901 DULANEY VALLEY ROAD, SUITE 801 TOWSON, MARYLAND 21204
Phone: (410) 821-7900 Fax: (410) 621-7987
www.BohlerEngineering.com

PROFESSIONAL ENGINEER
I, BRANDON R. ROWE, HEREBY CERTIFY THAT THESE DOCUMENTS WERE PREPARED OR APPROVED BY ME, AND THAT I AM A LICENSED PROFESSIONAL ENGINEER UNDER THE LAWS OF THE STATE OF MARYLAND, LICENSE NO. 40088, EXPIRATION DATE: 7/30/2015

DES: J.A./V.G.	
DRN: A.V.G.	
CHK: B.R.R.	
DATE: 9/24/14	
REV. DATE	DESCRIPTION
5/15/15	5/15/15 REDLINE REVISION TO ADD CATHODIC PROTECTION INFORMATION TO WATER MAIN CROSSING THE STREAM.

PUBLIC 12" & 8" WATER MAIN & PUBLIC 8" SEWER MAIN PROFILES
PARCEL NO. 4
600' SCALE MAP NO. 47 BLOCK NO. N/A

WALDEN WOODS (BUILDABLE LOTS 1-97 & OPEN SPACE LOTS 98-102) 6TH ELECTION DISTRICT HOWARD COUNTY, MARYLAND CONTRACT NO.: 24-4784-D
SCALE AS NOTED
SHEET 3 OF 10



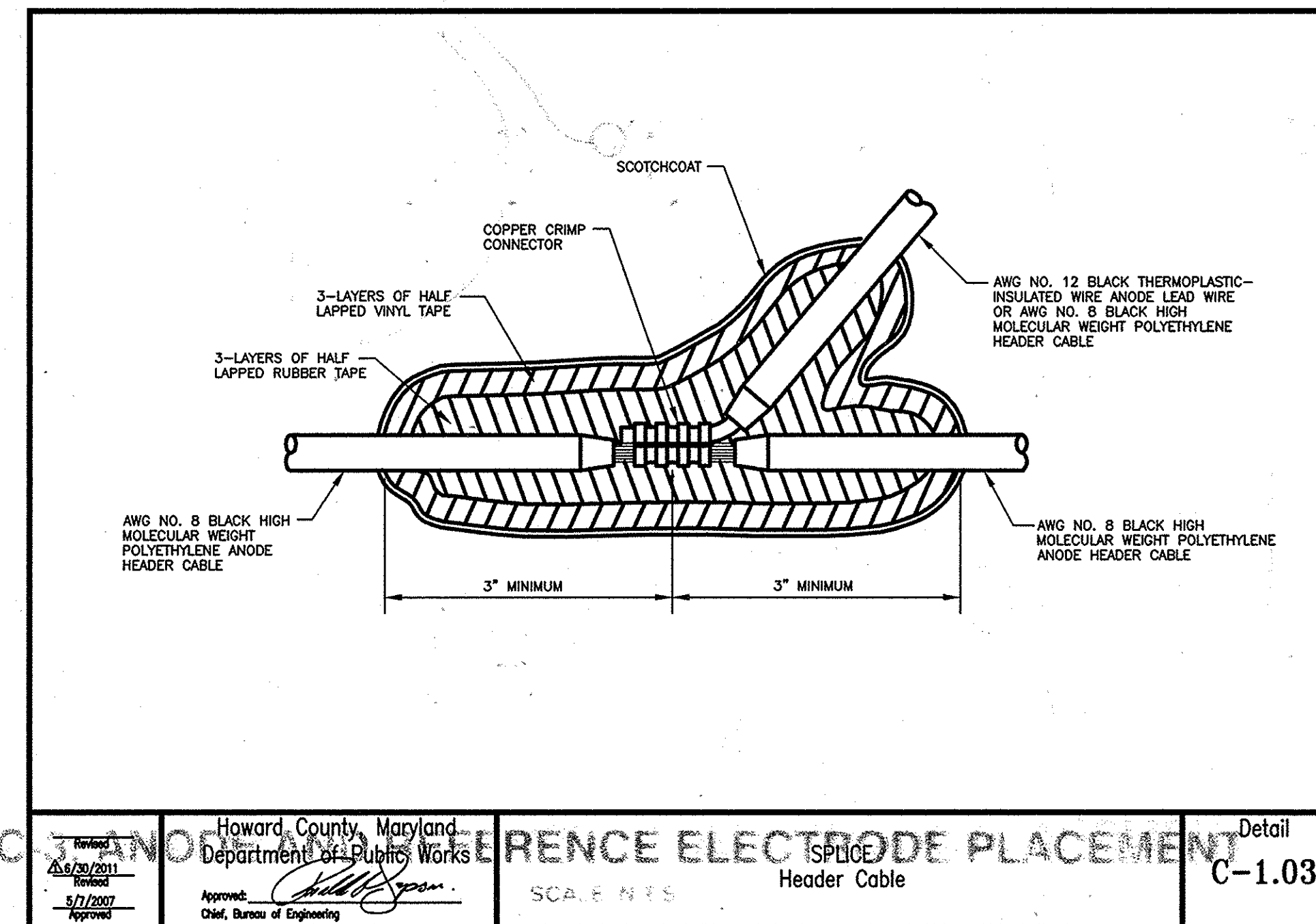
CC-1: ANODE TEST STATION

SCALE: N.T.S

WIRING SCHEDULE					
DESCRIPTION	WIRE	TEST STATION TERMINAL	AWG WIRE SIZE	TYPE OF INSULATION	COLOR OF INSULATION
NEW WATER MAIN	A B	1 3	#8 #10	THWN THWN	BLUE BLUE
PERMANENT REFERENCE ELECTRODE	C	6	#14	HMWPE	BLACK
ANODE HEADER CABLE	D1 D2	4 7	#8 #8	HMWPE HMWPE	BLACK BLACK

NOTES:

- DO NOT SET TEST STATION IN ROADWAY. PLACE TEST BOX IN NON-PAVED AREA NEXT TO ROADWAY. ROUTE ALL WIRES IN NON-METALLIC SCHEDULE 40 PVC CONDUIT TO FINAL TEST BOX LOCATION IF NOT LOCATED DIRECTLY ABOVE THE MAIN IN A NON-PAVED AREA.
- MAINTAIN SUFFICIENT SLACK IN THE TEST WIRES SO THAT THE WIRES CAN EXTEND A MINIMUM OF 18 INCHES FROM THE TEST BOX.
- TERMINATE WIRES IN TEST BOX WITH RING TERMINALS, SEE DETAIL CC-2 FOR TERMINAL BOARD CONFIGURATION.
- INSTALL 0.01 OHM SHUNT BETWEEN TERMINALS #1 AND #4.



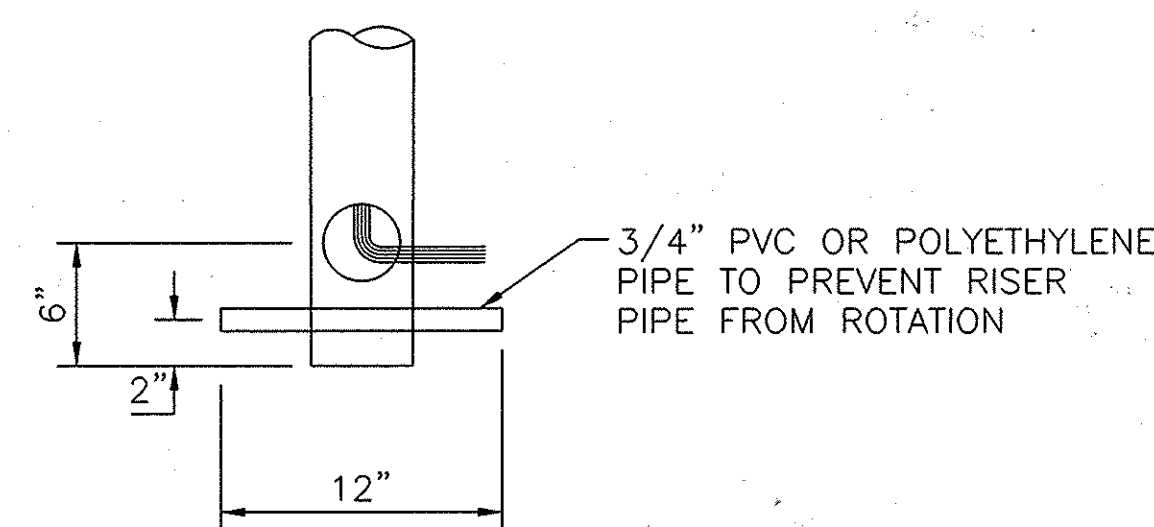
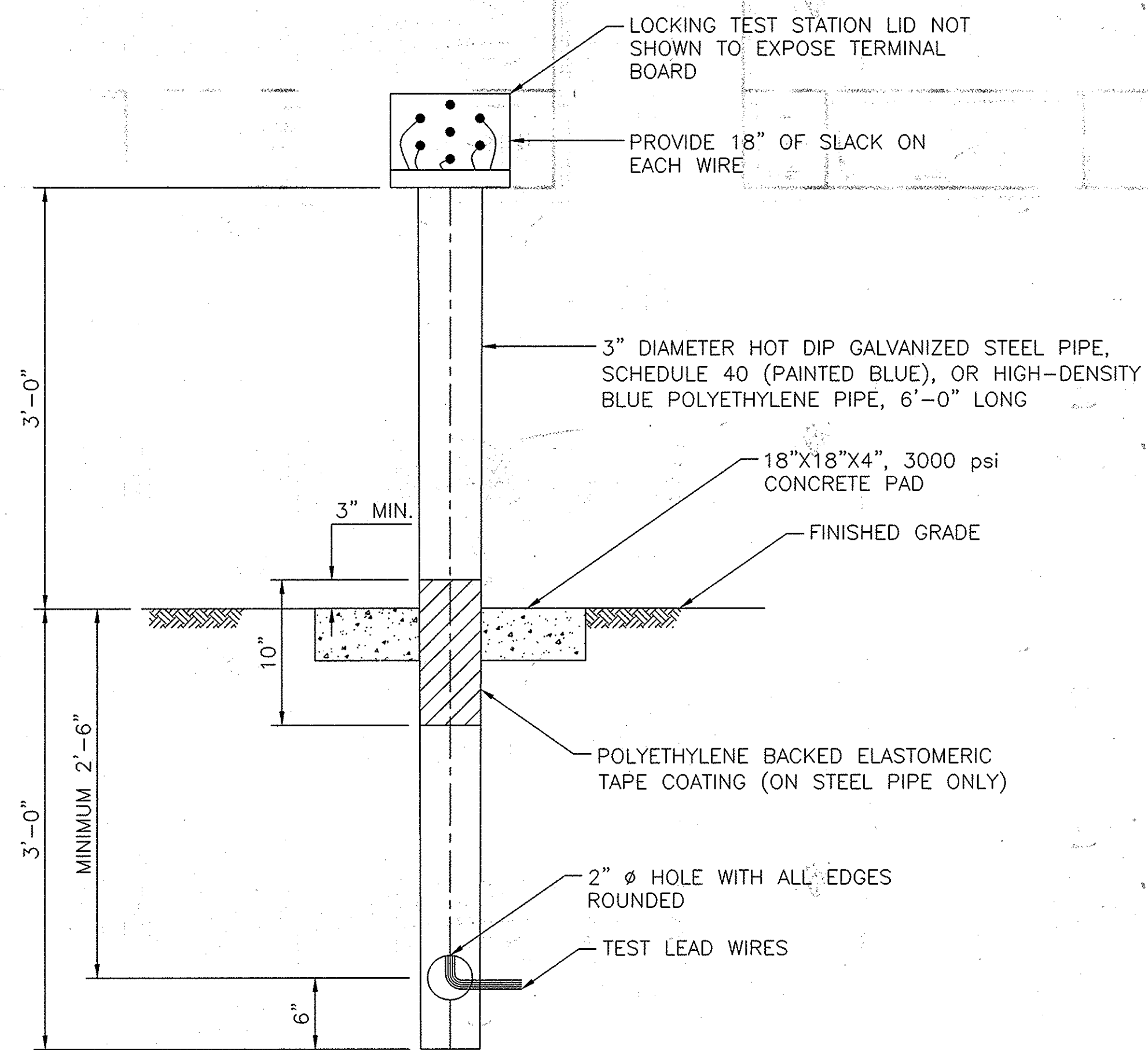
Howard County, Maryland
Department of Public Works
Approval: [Signature]
Chief, Bureau of Engineering

REFERENCE ELECTRODE PLACEMENT

ISPLICE Header Cable

SCALE: N.T.S

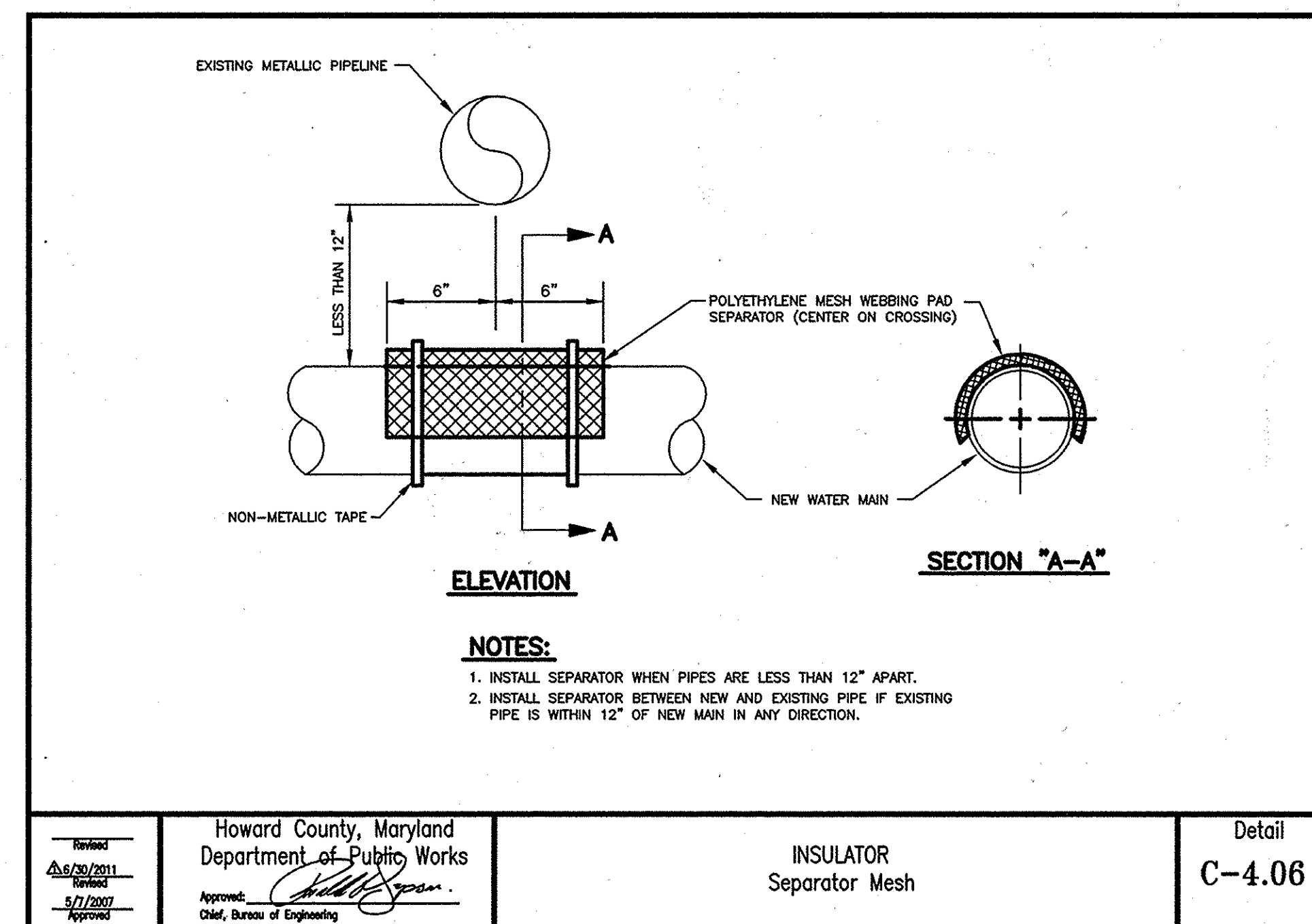
Detail C-1.03



POLYETHYLENE PIPE INSTALLATION ONLY

CC-2: PIPE MOUNTED ABOVE GROUND TEST STATION

SCALE: N.T.S



Howard County, Maryland
Department of Public Works
Approval: [Signature]
Chief, Bureau of Engineering

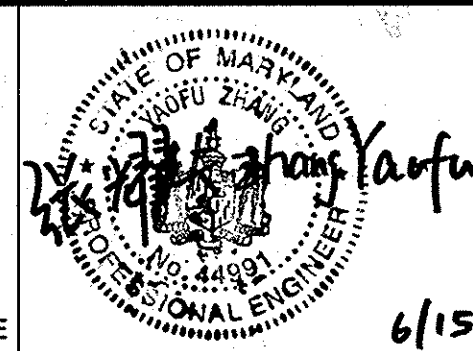
INSULATOR Separator Mesh

SCALE: N.T.S

Detail C-4.06

DEPARTMENT OF PUBLIC WORKS HOWARD COUNTY, MARYLAND

DEPARTMENT OF PLANNING & ZONING HOWARD COUNTY, MARYLAND

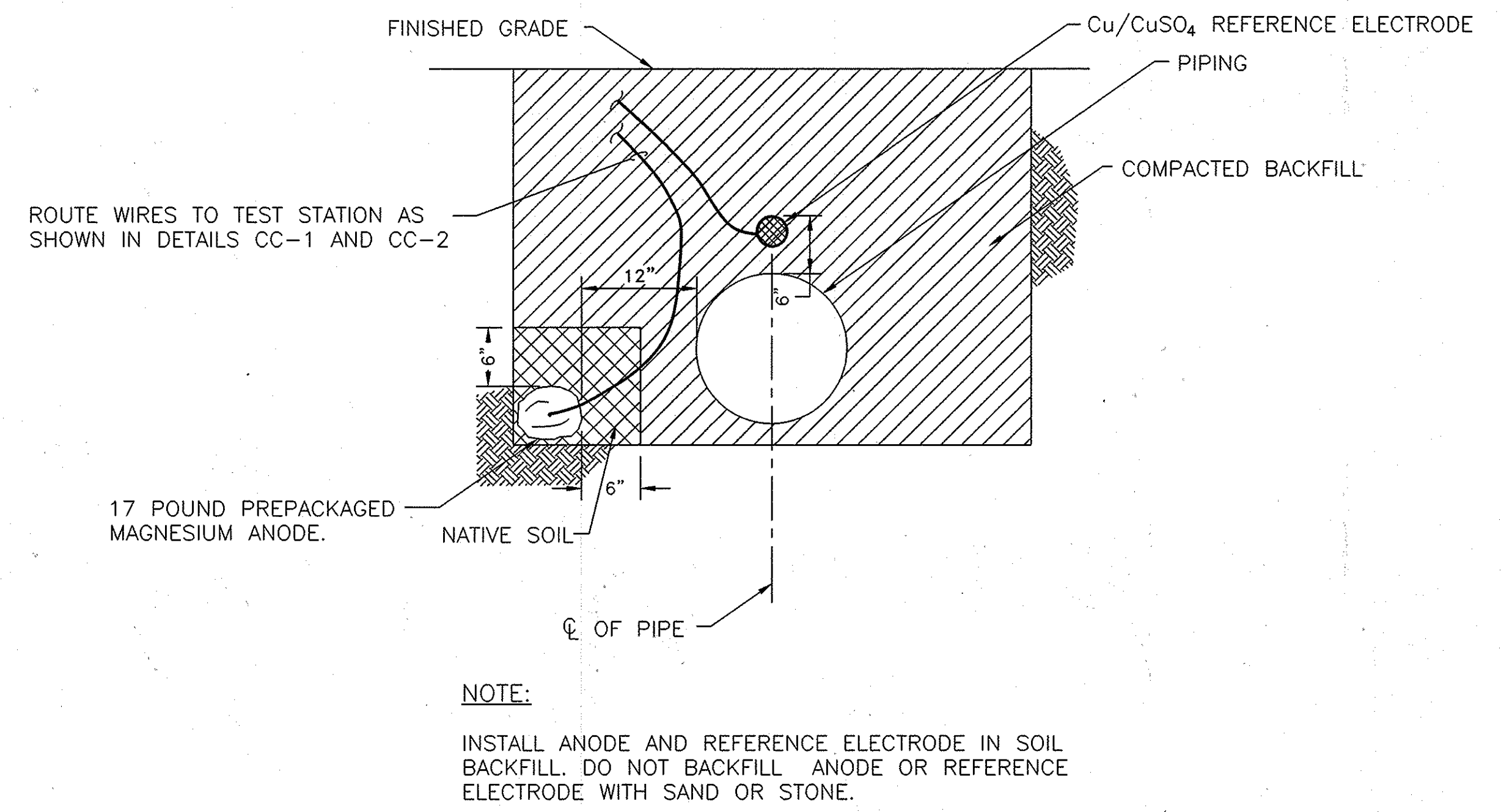
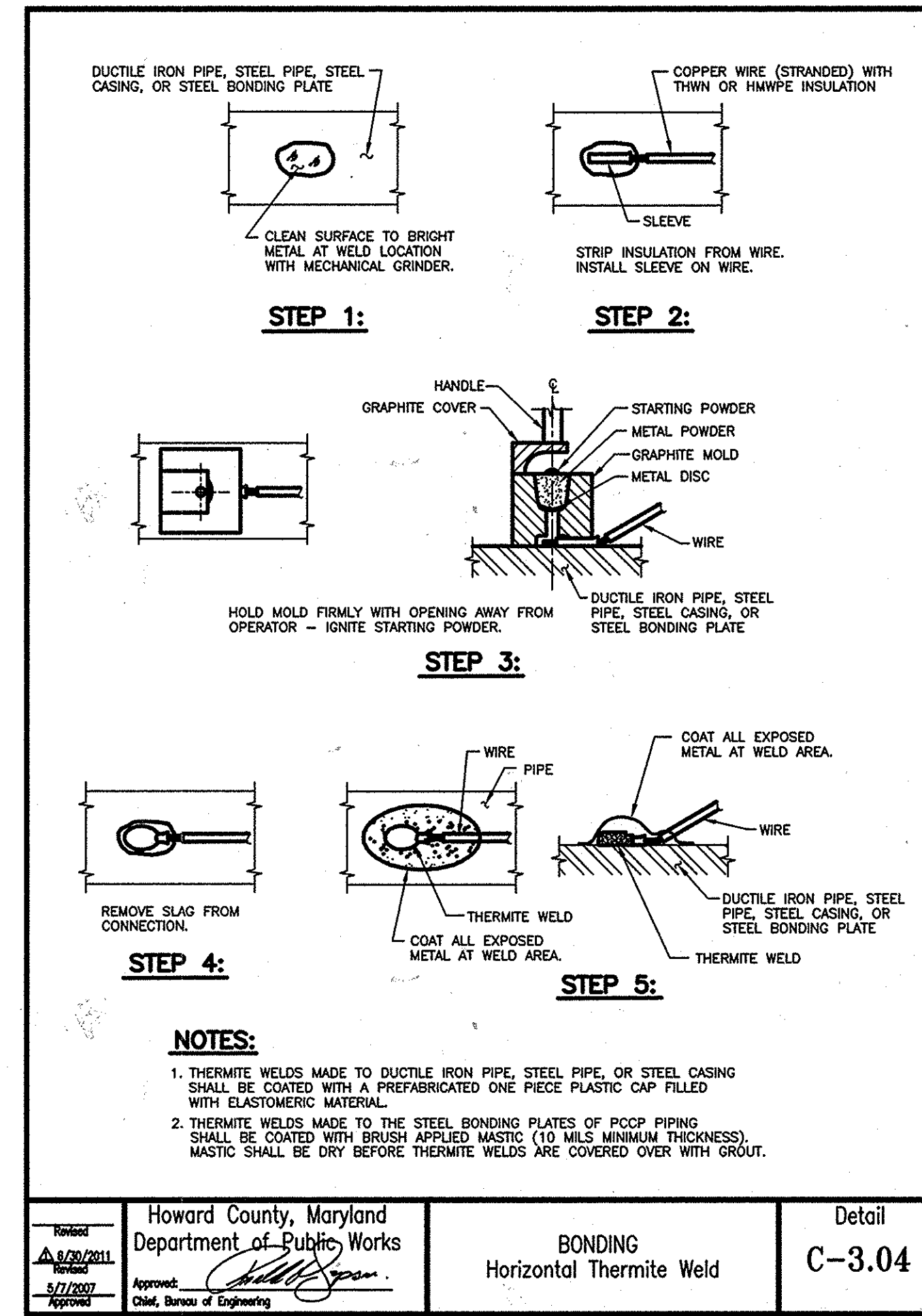
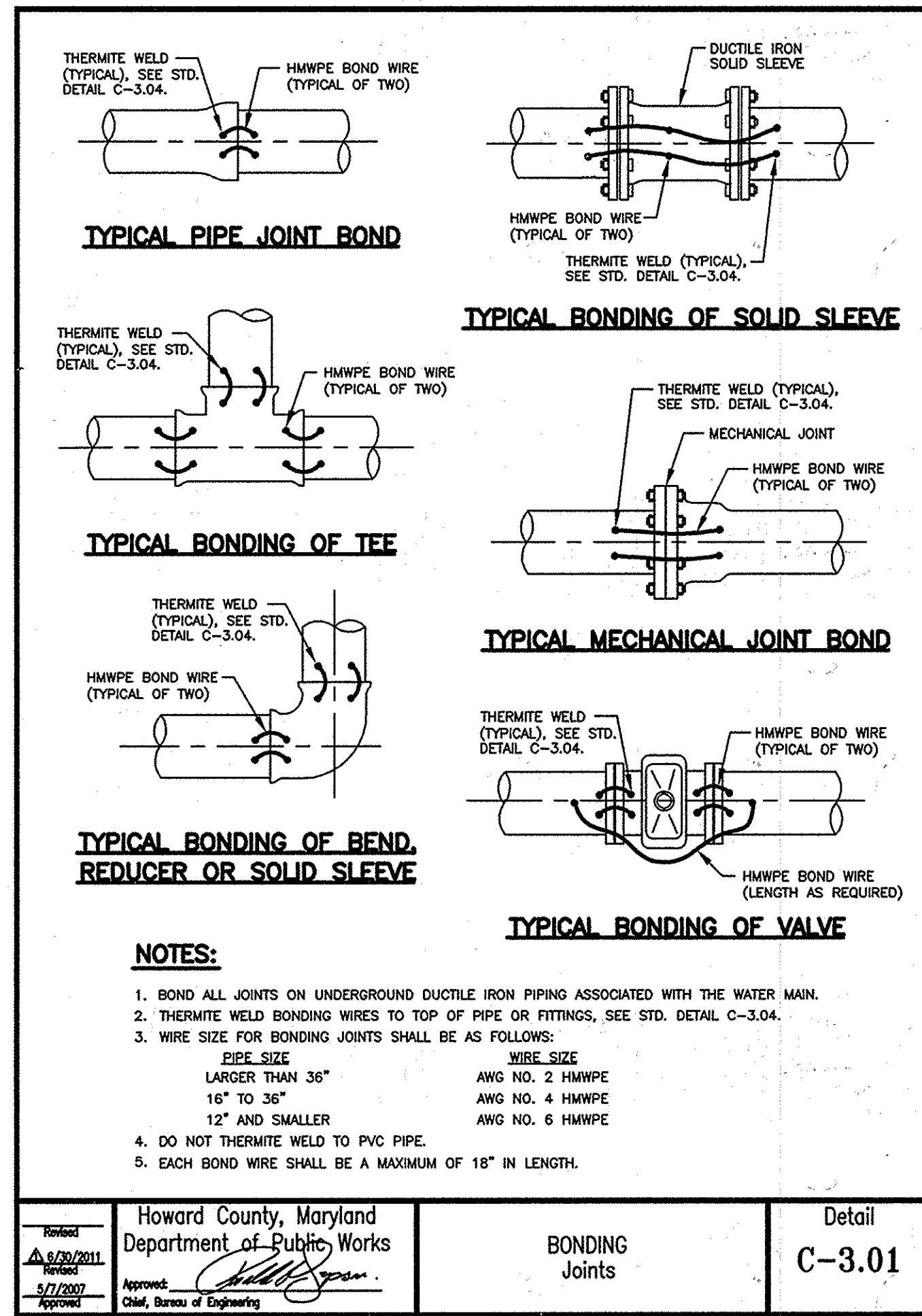


DES: YZ					
DRN: JWW					
CHK: YZ					
DATE: 5/20/15					
REV.	DATE	DESCRIPTION	BY	PARCEL NO. 4	600' SCALE MAP NO. 47 BLOCK NO. N/A

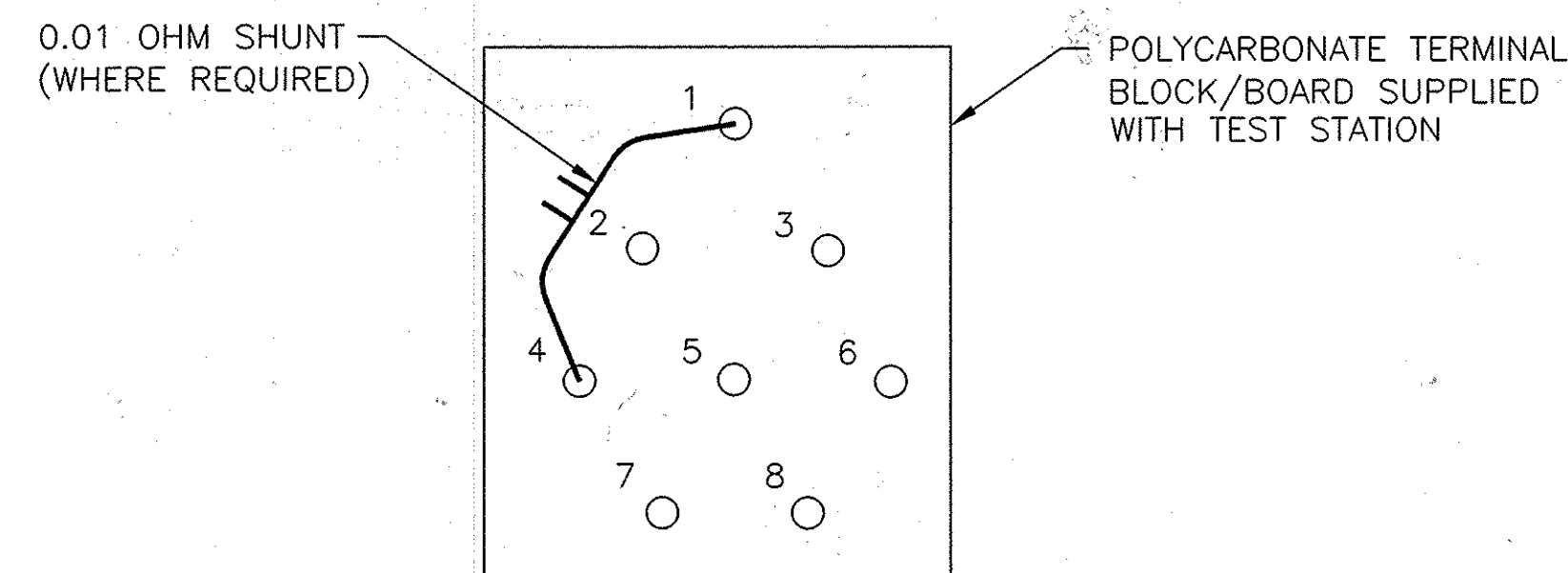
CATHODIC PROTECTION DETAILS SHEET 1

WALDEN WOODS
(BUILDABLE LOTS 1-97 & OPEN SPACE LOTS 98-102)
6TH ELECTION DISTRICT
HOWARD COUNTY, MARYLAND
CONTRACT NO.: 24-4784-D

SCALE
SHEET
6 OF 10

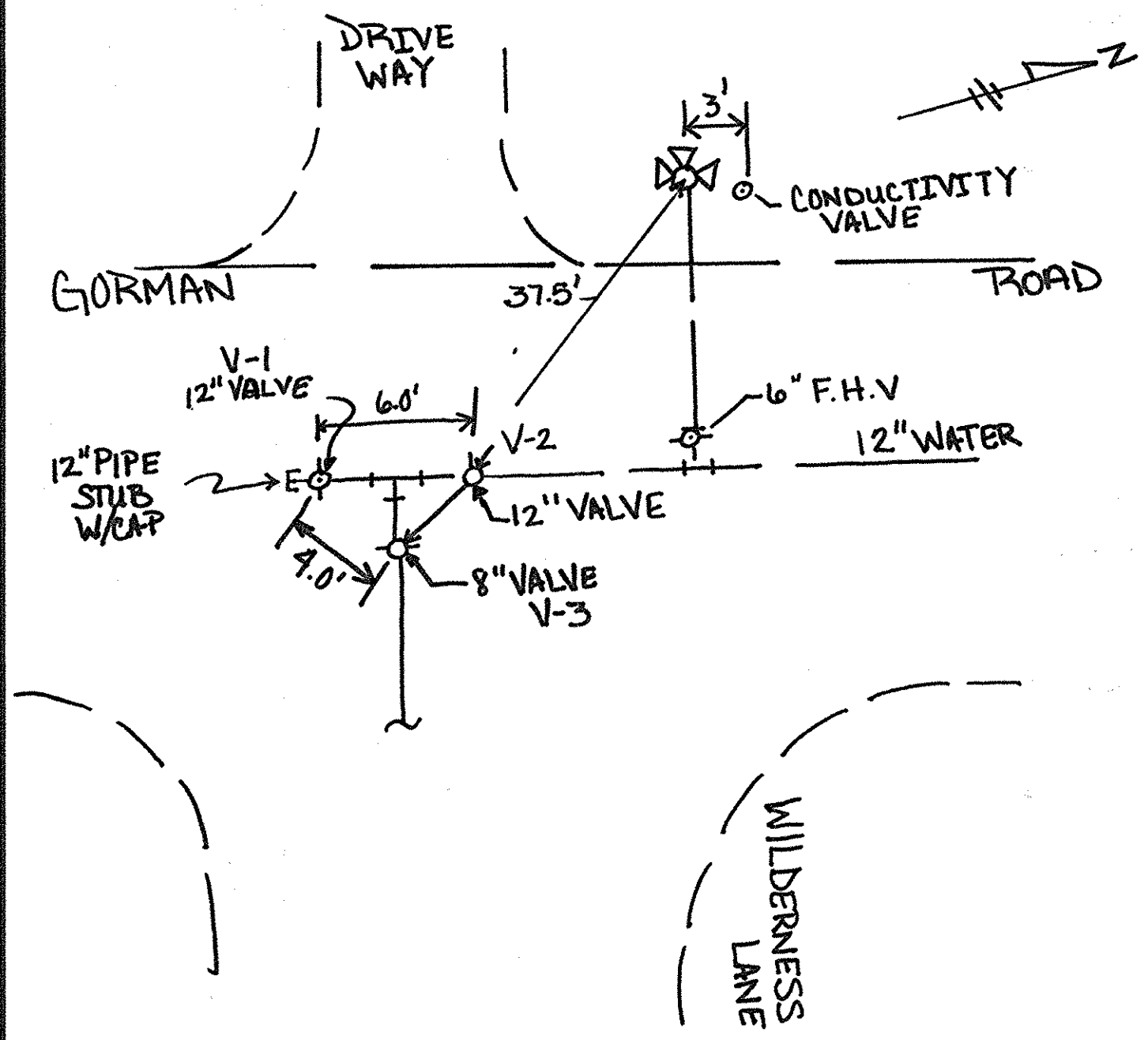


CC-3: ANODE AND REFERENCE ELECTRODE PLACEMENT
SCALE: N.T.S



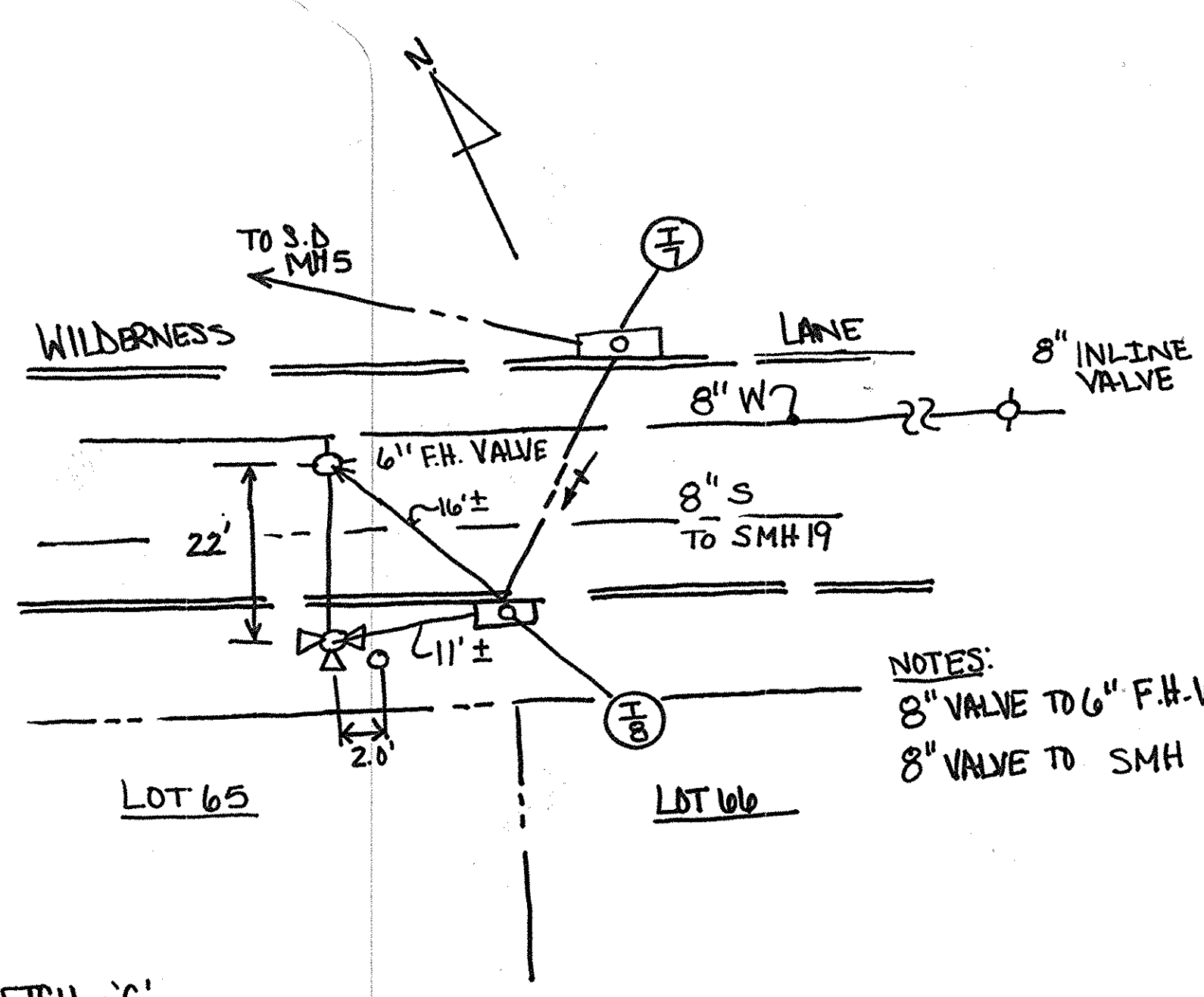
- TERMINAL #1 - NEW WATER MAIN
- TERMINAL #2 - EMPTY
- TERMINAL #3 - NEW WATER MAIN
- TERMINAL #4 - PREPACKAGED MAGNESIUM ANODE LEAD WIRE
- TERMINAL #5 - EMPTY
- TERMINAL #6 - PERMANENT REFERENCE ELECTRODE
- TERMINAL #7 - PREPACKAGED MAGNESIUM ANODE LEAD WIRE
- TERMINAL #8 - EMPTY

CC-4: PIPE MOUNTED TEST STATION TERMINAL BLOCK
SCALE: N.T.S.



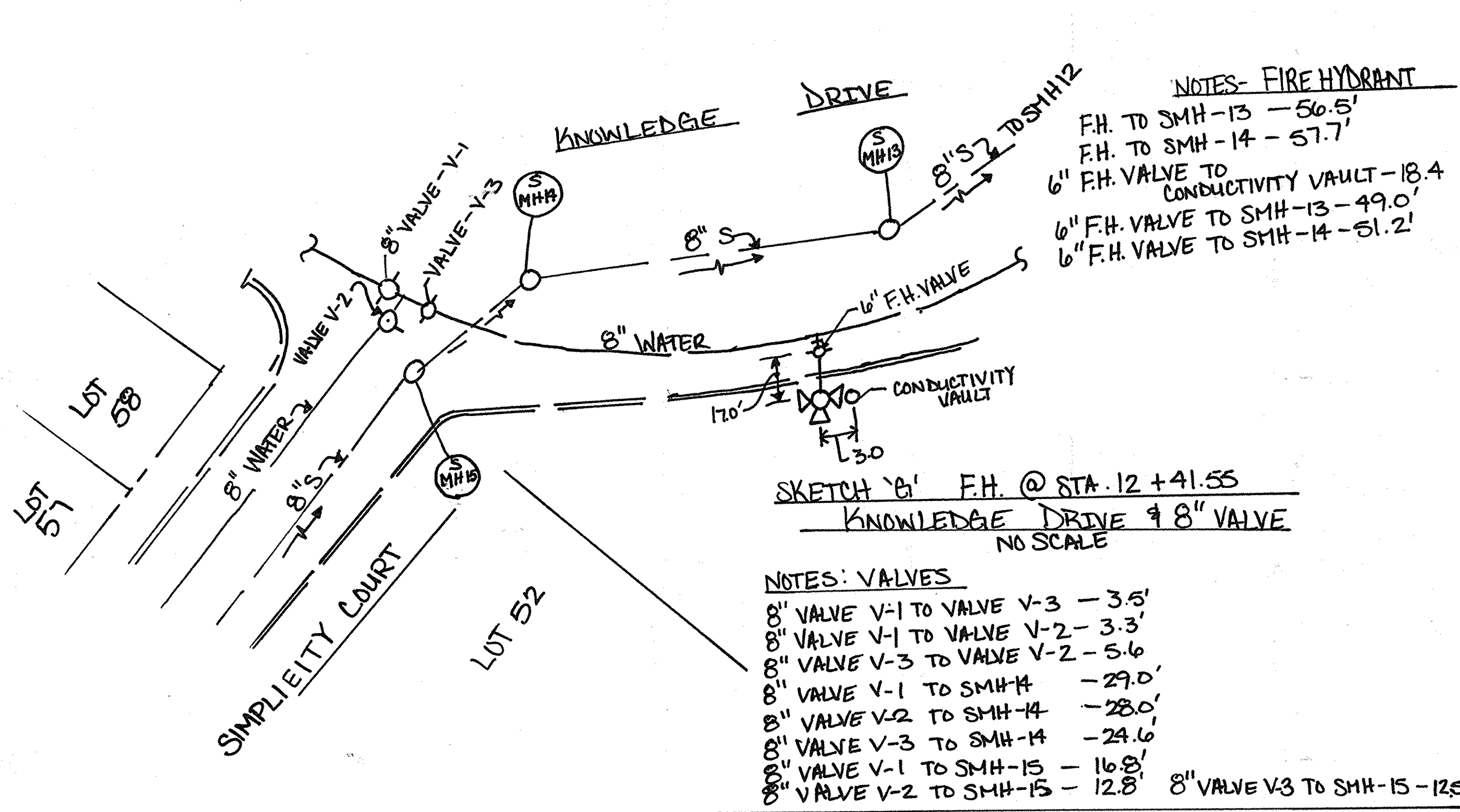
SKETCH 'A' - GORMAN ROAD @ WILDERNESS LANE
NO SCALE

NOTES:
12" VALVE V-2 TO 6" F.H. VALVE - 25.5'
6" F.H. VALVE TO F.H. - 26.0'
12" VALVE V-1 TO F.H. - 42.0'



SKETCH 'C'
FIRE HYDRANT @ STA 15+70.84 &
8" IN-LINE VALVE
NO SCALE

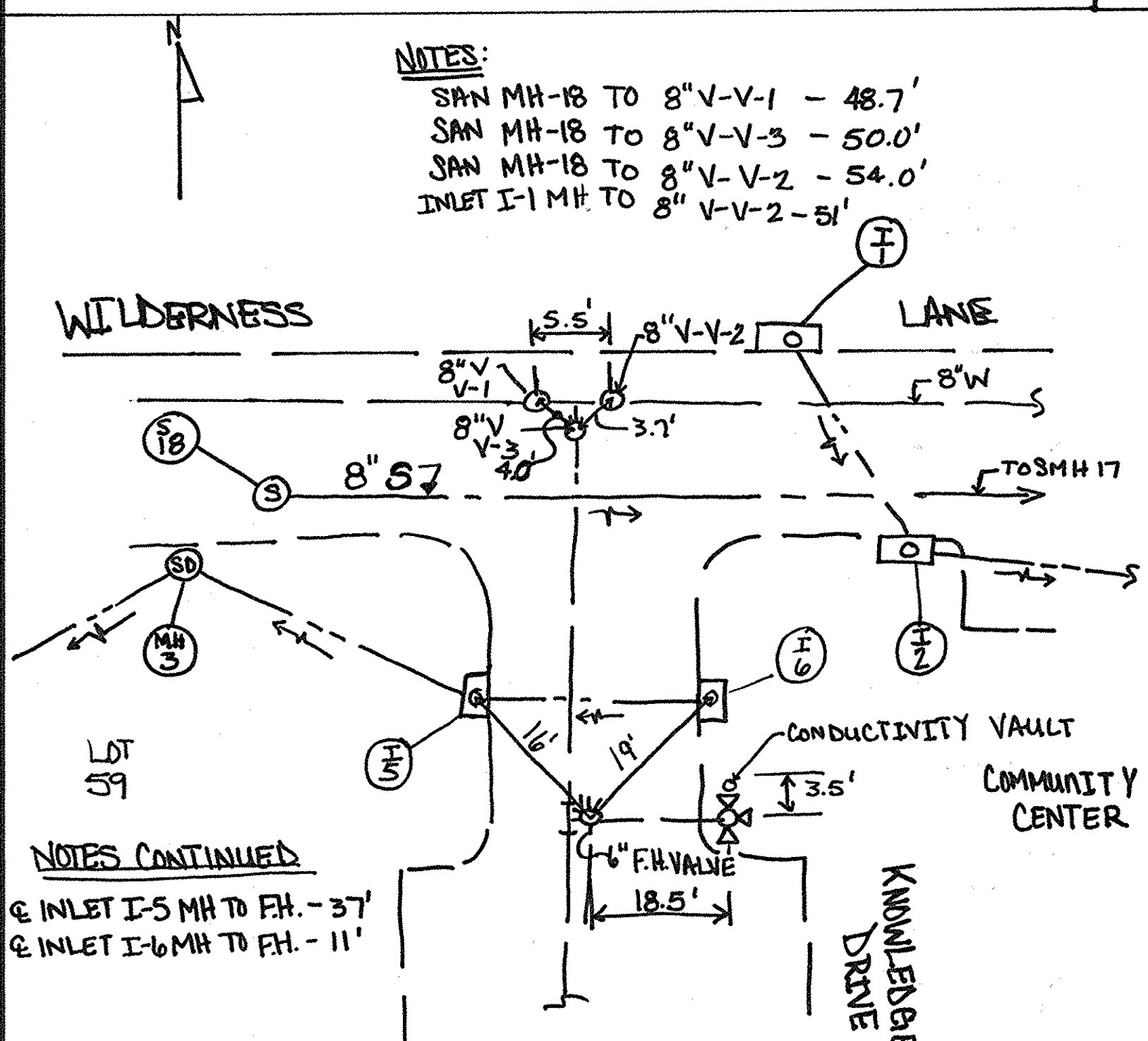
NOTES:
8" VALVE TO 6" F.H. VALVE - 90'±
8" VALVE TO SMH - 97'±



SKETCH 'G' F.H. @ STA. 12+41.55
KNOWLEDGE DRIVE 8" VALVE
NO SCALE

NOTES: VALVES
8" VALVE V-1 TO VALVE V-3 - 3.5'
8" VALVE V-1 TO VALVE V-2 - 3.3'
8" VALVE V-3 TO VALVE V-2 - 5.6'
8" VALVE V-1 TO SMH-14 - 29.0'
8" VALVE V-2 TO SMH-14 - 28.0'
8" VALVE V-3 TO SMH-14 - 24.6'
8" VALVE V-1 TO SMH-15 - 16.8'
8" VALVE V-2 TO SMH-15 - 12.8'
8" VALVE V-3 TO SMH-15 - 12.5'

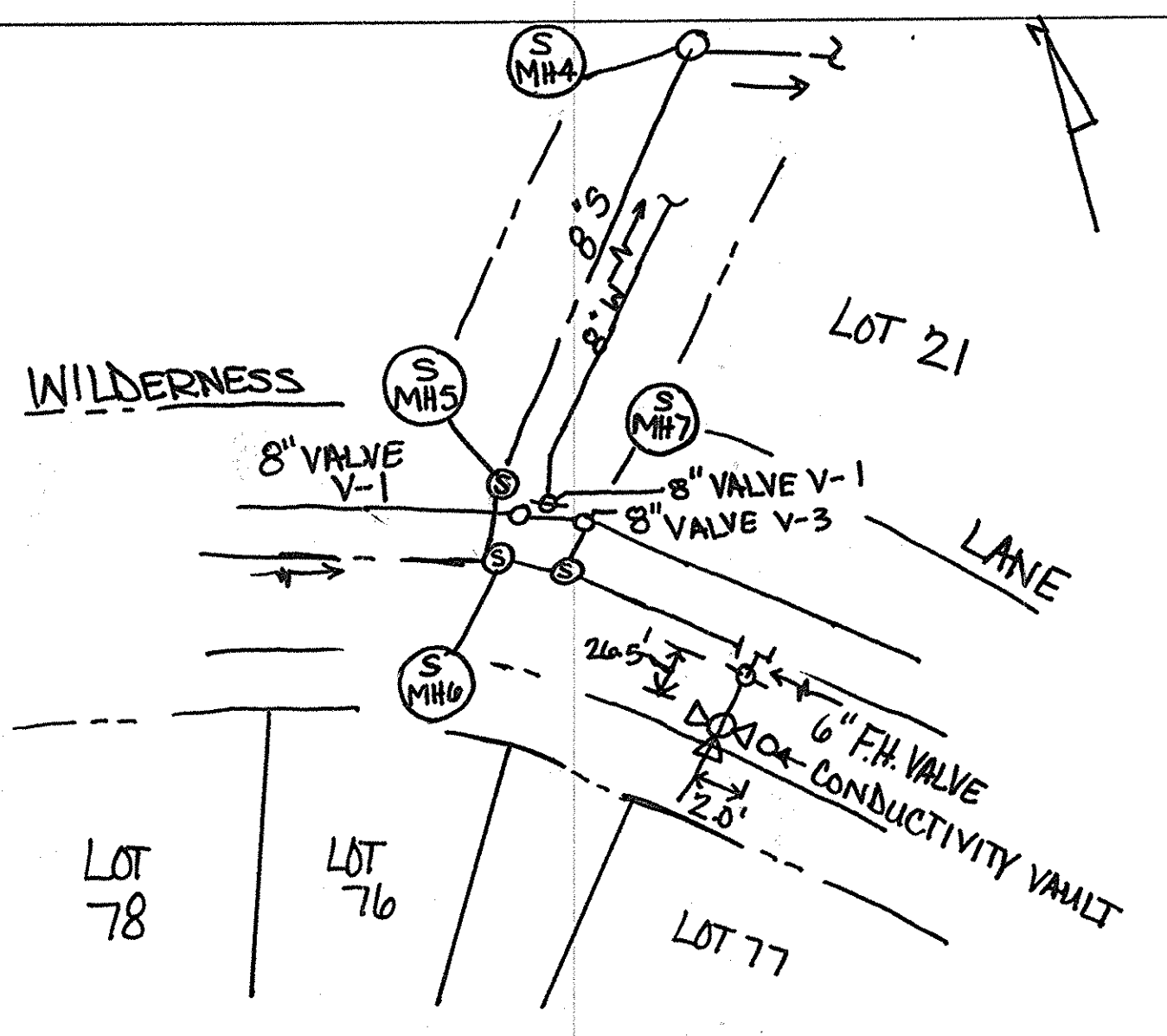
NOTES- FIRE HYDRANT
F.H. TO SMH-13 - 56.5'
F.H. TO SMH-14 - 57.7'
6" F.H. VALVE TO CONDUCTIVITY VAULT - 18.4'
6" F.H. VALVE TO SMH-13 - 49.0'
6" F.H. VALVE TO SMH-14 - 51.2'



SKETCH 'B' - WILDERNESS LANE @ KNOWLEDGE DRIVE
NO SCALE

NOTES CONTINUED
@ INLET I-5 MH TO F.H. - 37'
@ INLET I-6 MH TO F.H. - 11'

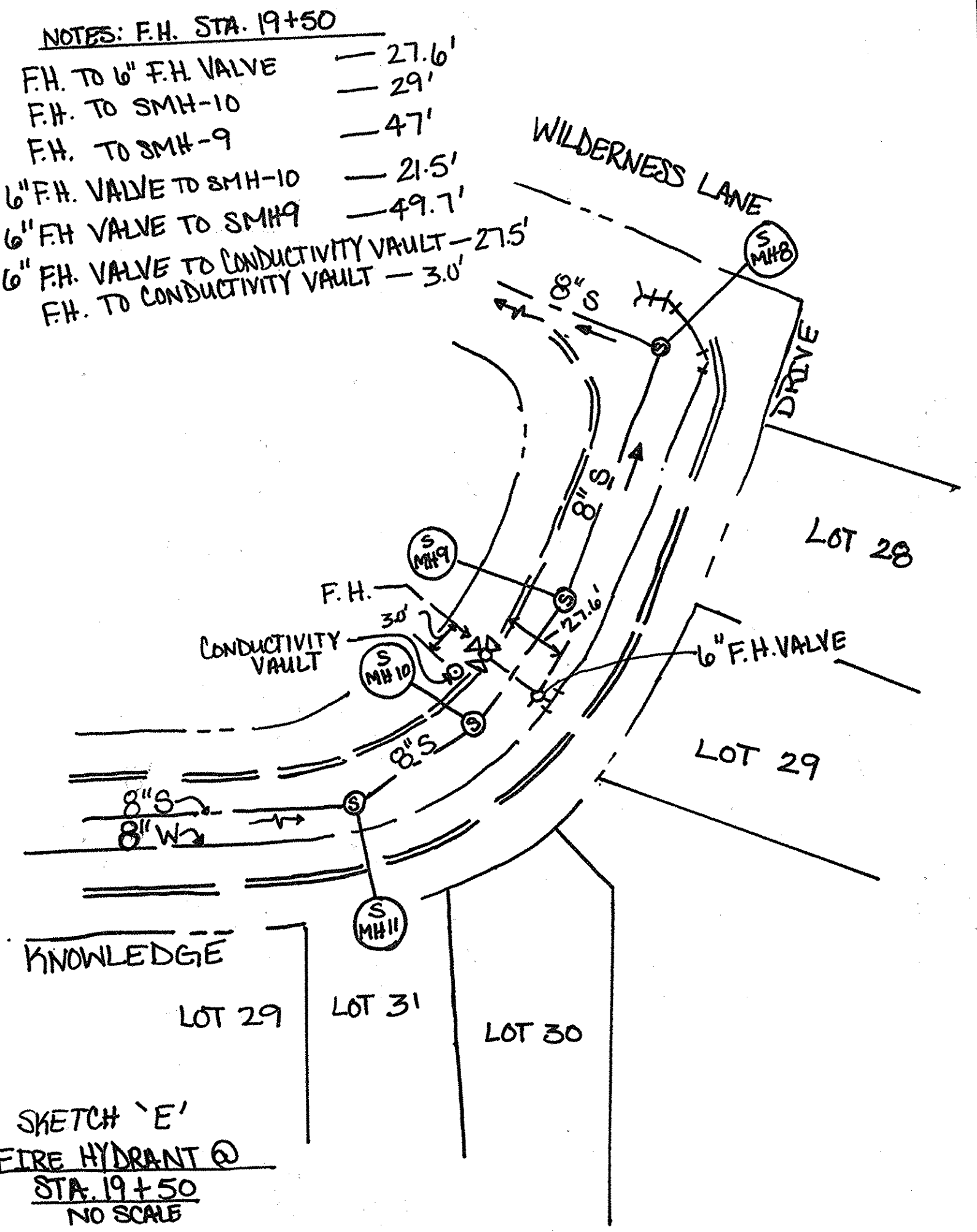
NOTES:
SAN MH-18 TO 8" V-V-1 - 48.7'
SAN MH-18 TO 8" V-V-3 - 50.0'
SAN MH-18 TO 8" V-V-2 - 54.0'
INLET I-1 MH TO 8" V-V-2 - 51'



SKETCH 'D'
FIRE HYDRANT @ WATER LINE STA. 19+40.24
NO SCALE

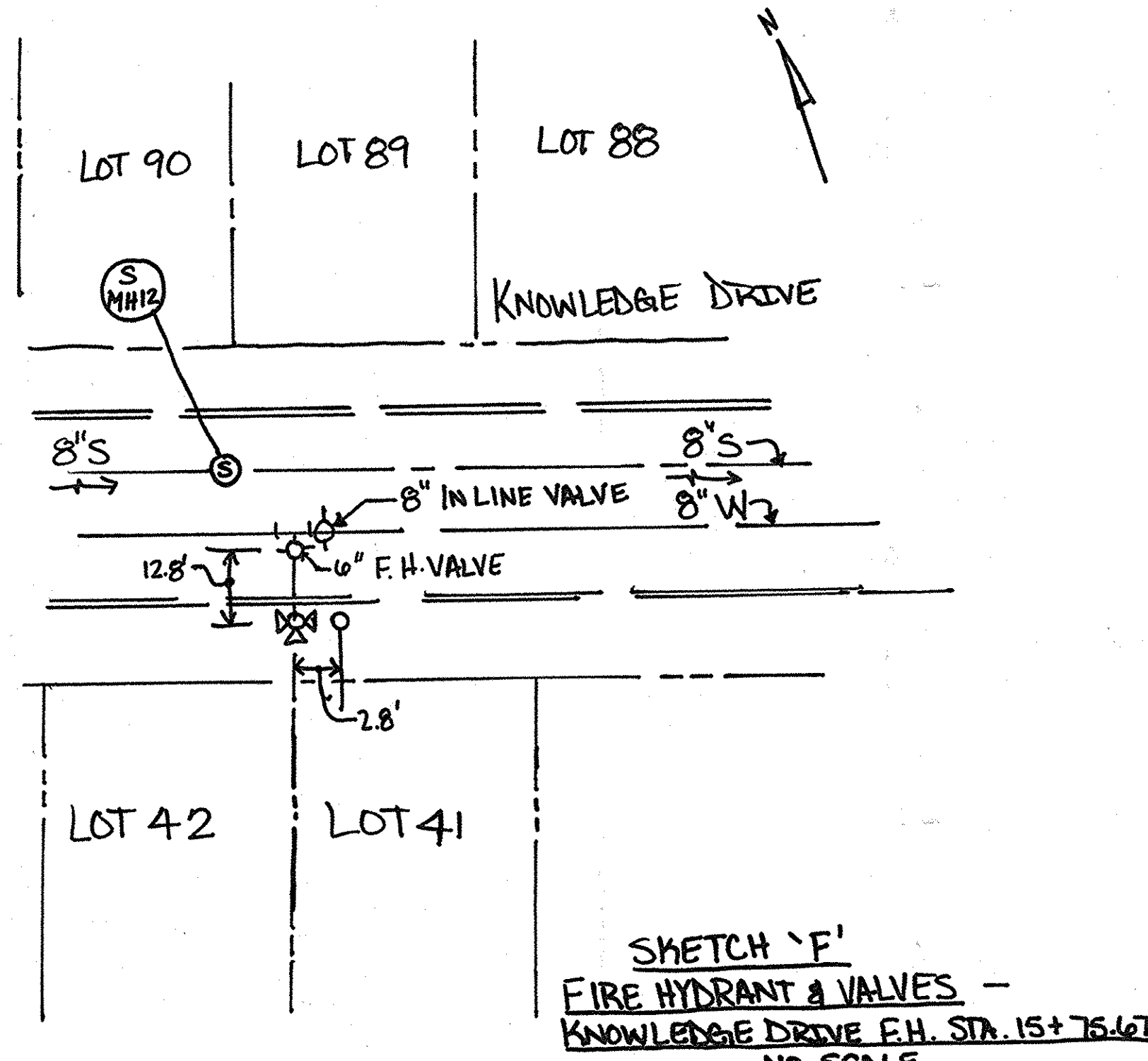
NOTES: FOR F.H.
F.H. TO SMH 7 - 34.5'
6" F.H. VALVE TO 8" V-V-3 - 32.5'
6" F.H. VALVE TO SMH 7 - 33.7'

WATER VALVE-AS-BUILT NOTES
8" VALVE V-1 TO VALVE V-2 - 4'
8" VALVE V-1 TO VALVE V-3 - 4'
8" VALVE V-2 TO VALVE V-3 - 5.8'
8" VALVE V-2 TO SMH 7 - 10.4'
SMH 6 TO VALVE V-2 - 13.3'
SMH 6 TO VALVE V-1 - 17.4'
SMH 6 TO VALVE V-3 - 16.5'



SKETCH 'E'
FIRE HYDRANT @ STA. 19+50
NO SCALE

NOTES: F.H. STA. 19+50
F.H. TO 6" F.H. VALVE - 27.6'
F.H. TO SMH-10 - 29'
F.H. TO SMH-9 - 47'
6" F.H. VALVE TO SMH-10 - 21.5'
6" F.H. VALVE TO SMH 9 - 49.7'
6" F.H. VALVE TO CONDUCTIVITY VAULT - 27.5'
F.H. TO CONDUCTIVITY VAULT - 3.0'



SKETCH 'F'
FIRE HYDRANT & VALVES -
KNOWLEDGE DRIVE F.H. STA. 15+76.62
NO SCALE

NOTES:
F.H. TO 6" F.H. VALVE - 12.8'
F.H. TO SMH-12 - 22.3'
F.H. TO 8" IN-LINE VALVE - 13.5'
6" F.H. VALVE TO CONDUCTIVITY VAULT - 13.0'
6" F.H. VALVE TO SMH-12 - 10'
6" F.H. VALVE TO 8" IN-LINE VALVE - 2.8'
8" IN-LINE VALVE TO SMH-12 - 10'±

* FOR AS-BUILT PURPOSES ONLY AS-BUILT 8-20-15

LOT NUMBER	MEASUREMENT 1	MEASUREMENT 2
1	S.D. MH3 - 42.5' #3 TO WHC 182 - 22'	8" VALVE V-1 - 36.5'
2	8" VALVE V-1 - 42.6'	8" VALVE V-1 - 32.5'
3	8" VALVE V-1 - 52.1' # TO TWHC 344 - 31.5'	8" VALVE V-1 - 23.5'
4	8" VALVE V-2 - 42'	INLET I-1 MH - 12.5'
5	INLET I-1 MH - 58.6'	TWHC 5916 - 60'
6	INLET I-1 MH - 29'	INLET I-2 MH - 44'
7	INLET I-2, MH 82 ± #3 S.D. MH 2A - 75'	TWHC 798 - 4.5'
8	INLET I-2, MH 82 ± #3 TO WHC - 5.5'	TWHC 788 - 20.5'
COMMUNITY CENTER (NOTE SHC 8' BEHIND CURB FACE)		
9	S.D. MH 2A - 77'	INLET I-2 MH - 50'
10	TO SMH - 17 - 35'	TWHC 9910 - 27'
11	TO SMH - 17 - 39'	WHC LOT 11 - 27'
12	TO SMH - 17 - 58.5'	INLET I-4, MH - 16'
13	TO INLET I-4, MH - 25'	TO F.H. - 59'
14	TO S.D. MH 5 -	TO F.H. - 50'
15	TO TWHC 14815 - 13.5'	TO INLET I-7, MH - 15.5'
16	TO F.H. - 75.5'	TO WHC LOT 16 - 46'
17	TO WHC LOT 16 - 26.5'	TO INLET I-7, MH - 18.5'

LOT NUMBER	MEASUREMENT 1	MEASUREMENT 2
34	TO S.D. MH - 10 - 40.5' #3 TO TWHC - 33834 - 15'	TO SMH - 11 - 35'
35	TO S.D. MH - 10 - 8.0'	TO WHC - 35 - 12.5'
36	TO INLET I-16 MH - 13'	TO TWHC 36827 - 17'
37	TO INLET I-19 MH - 15.5'	TO INLET I-16 MH - 42.8'
38	TO INLET I-19 MH - 14'	TO TWHC 38939 - 14'
39	TO S.D. MH 11 - 12 ±	TO TWHC 38829 - 20.5'
40	TO S.D. MH 11 - 50'	TO TWHC 40841 - 56.5'
41	TO WHC 40841 - 6.5'	TO F.H. - 30.5'
42	TO F.H. - 24'	TO TWHC 42843 - 8.5'
43	TO TWHC 42843 - 7.5' #3 TO F.H. - 29'	TO INLET I-18 MH - 48.5'
44	TO F.H. - 56'	TO TWHC 44845 - 27.5'
45	TO TWHC - 44845 - 89'	TO INLET I-18 MH
46	TO INLET I-18 MH - 60.5'	TO TWHC 46847 - 4.5'
47	TO INLET I-18 MH - 70'	TO TWHC 46847 - 58.7'
48	TO INLET I-22 MH - 74'	TO TWHC 48849 - 20.5'
49	TO INLET I-22 MH - 48.5' #3 TO TWHC 48849 - 65.7'	TO INLET I-23 MH - 60'
50	TO TWHC 50851 - 26.4'	TO INLET I-22 MH - 26.5'
51	TO SMH - 13 - 28 ±	TO S.D. MH - 14'

LOT NUMBER	MEASUREMENT 1	MEASUREMENT 2
87	TO TWHC 87886 - 5.5'	TO S.D. MH - 11 - 48'
86	TO INLET I-20 MH - 21' #3 TO TWHC 87886 - 22.6'	TO S.D. MH 11 - 40'
85	TO INLET I-17 MH - 47' #3 TO WHC 85 - 4.7'	TO INLET I-20 MH - 23'
84	TO TWHC 84883 - 27'	TO INLET I-17 MH - 25.2'
83	TO INLET I-17 MH - 16'	TO TWHC 84883 - 7.0'
82	TO TWHC 82881 - 5.7' #3 TO SMH - 11 - 53.5'	TO INLET I-17 MH - 41.5'
81	TO S.D. MH - 10 - 60.5'	TO SMH 11 - 44'
80	TO WHC 80 - 5.5' #3 TO SMH 11 - 37.5'	TO SMH 10 - 35'
79	TO SMH 8 - 49.5' #3 TO TWHC 79878 - 24'	TO INLET I-13 MH - 33.5'
78	TO F.H. 6" VALVE - 70'	TO INLET I-13 MH - 22.5'
77	TO TWHC 77876 - 5.5' #3 TO INLET I-13 MH - 26'	TO F.H. - 29.5'
76	TO F.H. - 12'	TO SMH 7 - 30'
75	TO SMH - 6 - 30.5'	TO TWHC 74875 - 9.5'
74	TO SMH - 6 - 40'	TO INLET MH 10 - 45.5'
73	TO INLET I-10 MH 23.5' # TO TWHC 73872 - 26.5'	TO SMH 6 - 61'
72	TO SMH - 19 - 23.5'	TO INLET I-10 MH - 21'

LOT NUMBER	MEASUREMENT 1	MEASUREMENT 2
17	TO TWHC 17818 - 21.5'	TO SMH - 19 - 79'
18	TO SMH - 19 - 78'	TO 8" INLINE VALVE - 30'
19	TO TWHC 19820 - 5.8'	TO SMH - 19 -
20	TO S.D. MH 4A - 17 ± #3 TO TWHC 19820 - 26'	TO SMH - 19 -
21	TO SMH - 7 - 34.5'	TO TWHC 21822 - 40.5'
22	TO SMH - 7 - 74.5'	TO INLET I-12 MH - 53.5'
23	TO WHC LOT 23 - 4.5'	TO INLET I-12 MH - 14.5'
24	TO SMH - 8 - 33.5'	TO WHC LOT 24 - 9'
25	TO SMH 8 - 35'	TO TWHC 25826 - 5.5'
26	TO SMH 8 - 27'	TO TWHC 25826 - 34.5'
27	TO SMH 8 - 74' #3 TO TWHC 27828 - 5.5'	TO SMH 9 - 54.5'
28	TO SMH 8 - 85'	TO SMH - 9 - 46'
29	TO SMH 9 - 45' #3 TO WHC 29 - 5.8'	TO SMH - 10 - 45'
30	TO SMH - 11 - 60.5'	TO SMH - 10 - 31'
31	TO SMH - 10 - 33' #3 TO TWHC 31832 - 26.5'	TO SMH 11 - 57'
32	TO SMH - 11 - 38'	TO SMH - 10 - 55'
33	TO SMH - 11 - 33.5'	TO TWHC 33834 - 4.5'

LOT NUMBER	MEASUREMENT 1	MEASUREMENT 2
52	TO SMH - 13 - 38.5'	TO TWHC 52853 - 19.3'
53	TO SMH - 16 - 48'	TO SMH - 15 - 64'
54	TO SMH - 16 - 22.8'	TO TWHC 54855 - 21.3'
55	TO INLET I-25 MH - 44.5' #3 TO TWHC 54855 - 20'	TO SMH - 16 - 30.5'
56	TO INLET I-25 MH - 44.5' #3 TO WHC 56 - 5'	TO SMH - 16 - 29.5'
57	TO SMH - 16 - 66.5'	TO TWHC 58857 - 5.3'
58	TO SMH - 16 - 67 ±	TO SMH - 15 - 34 ±
97	TO INLET I-23 MH - 18.5'	TO TWHC 97896 - 22'
59	TO S.D. MH 3 - 20.5' #3 TO WHC #59 - 6.0'	TO SMH - 18 - 21.6'
96	TO INLET I-23 MH 48.5'	TO INLET I-22 MH - 65'
95	TO INLET I-23 MH 89.5'	TO TWHC 95894 - 50'
94	TO INLET I-21 MH - 86'	TO INLET I-18 MH - 98'
93	TO INLET I-21 MH - 41' #3 TO TWHC 93892 - 5'	TO INLET I-18 MH - 48.5'
92	TO INLET I-21 MH - 13.5'	TO INLET I-18 MH - 39.6'
91	TO INLET I-21 MH - 16'	TO SMH - 12 - 61.5'
90	TO INLET I-21 MH - 57.5'	TO SMH - 12 - 23'
89	TO SMH - 12 - 23'	TO TWHC 89888 - 5'
88	TO F.H. - 56.5'	TO INLET I-20 MH - 73'

LOT NUMBER	MEASUREMENT 1	MEASUREMENT 2
71	TO SMH 19 - 29'	TO TWHC 70871 - 21'
70	TO SMH 19 - 54'	TO 8" VALVE - 66'
69	TO 8" VALVE - 32' #3 TO TWHC 68868 - 40'	TO S.D. MH - 6 - 90'
68	TO 8" VALVE - 29.5'	TO F.H. - 95.4'
67	TO 8" VALVE 52' #3 TO F.H. - 50'	TO TWHC 66867 - 4.0'
66	TO 8" VALVE - 76' #3 TO TWHC 66867 - 237'	TO F.H. - 23'
65	TO TWHC 64865 - 20'	TO F.H. - 10'
64	TO F.H. - 48.5'	TO INLET I-3 MH - 50'
63	TO SMH 17 - 60'	TO TWHC 62863 - 19.5'
62	TO SMH 17 - 36.7'	TO F.H. - 65'
61	TO INLET I-3 MH - 21.5'	TO SMH - 17 - 23'
60	TO SMH - 17 - 50.5'	TO S.D. MH 2A - 37.5'

* FOR AS-BUILT PURPOSES ONLY AS-BUILT 8-20-15

DEPARTMENT OF PUBLIC WORKS HOWARD COUNTY, MARYLAND
CHIEF, BUREAU OF UTILITIES DATE

DEPARTMENT OF PLANNING & ZONING HOWARD COUNTY, MARYLAND
CHIEF, DEVELOPMENT ENGINEERING DIVISION DATE

DES:				
DRN:				
CHK:				
DATE:	REV.	DATE	DESCRIPTION	BY

SEWER HOUSE CONNECTION CHARTS
PARCEL NO. 4
800' SCALE MAP NO. 47 BLOCK NO. N/A

WALDEN WOODS (BUILDABLE LOTS 1-97 & OPEN SPACE LOTS 98-102) 6TH ELECTION DISTRICT HOWARD COUNTY, MARYLAND CONTRACT NO.: 24-4784-D
SHEET 9 OF 10

LOT NUMBER	MEASUREMENT 1	MEASUREMENT 2
1#2 TWHC	TO SMH-18 - 33.1'	TO S.D. MH 3 - 51.6'
59	TO S.D. MH-3 - 15.5'	TO SMH-18 - 23.4'
344 TWHC	TO 4" INLET I-1 MH - 26.5'	TO 8" VALVE V-2 - 28.5'
546 TWHC	TO 4" INLET I-1 MH - 54.6'	TO 4" INLET I-2 MH - 47.5'
7#8	TO 4" S.D. MH 2A - 72'	TO 4" INLET I-2 MH - 89'
COMMUNITY CENTER 9#10 TWHC	TO 4" S.D. MH 2A - 82'	TO 4" INLET I-2 MH - 51'
11	TO SHC LOT 10 - 3'	TO SMH-17 - 31.5'
	TO SMH-17 - 48.5'	TO SHC LOT 11 - 14'
12	TO 4" F.H. - 54.5'	TO 4" INLET I-4 MH - 31'
13	TO 4" S.D. MH-5 - 55.5'±	TO 4" F.H. - 49.5'
14#15 TWHC	TO 4" INLET I-7 MH - 26.4'	TO SHC LOT 15 - 24'
16	TO 4" INLET I-7 MH - 27'	TO 8" VALVE - 20'±
17#18 TWHC	TO 8" VALVE - 46.5'	TO SHC LOT 18 - 5.8'
19#20 TWHC	TO SMH-19 - 37'	TO SHC LOT 20 - 26'
21#22 TWHC	TO SMH-7 - 66'	TO 4" F.H. - 55.5'
23	TO SMH-8 - 64'	TO 4" INLET I-12 MH - 17.3'

LOT NUMBER	MEASUREMENT 1	MEASUREMENT 2
82#81 TWHC	TO SMH-11 - 48.5'	TO SHC LOT 81 - 5.5'
80	TO SMH-11 - 43'	TO SMH-10 - 35.5'
79#78 TWHC	TO SMH 8 - 67'	TO 4" INLET I-13 MH - 13'
77#76 TWHC	TO 4" INLET I-13 MH - 62.5'	TO 4" F.H. - 24.3'
74#75 TWHC	TO SMH 6 - 33.5'	TO SMH 5 - 48.5'±
72#73 TWHC	TO SMH 6 - 87'	TO SMH 19 - 42'
70#71 TWHC	TO SMH 19 - 47.5'	TO 8" VALVE - 71'
68#69 TWHC	TO 8" VALVE - 68.5'	TO SHC LOT 68 - 7'
66#67 TWHC	TO 4" F.H. - 46'	TO 8" VALVE - 54'
64#65 TWHC	TO 4" INLET I-3 MH - 30.5'	TO 4" F.H. - 28.5'
62#63 TWHC	TO 4" INLET I-3 MH - 50'	TO SMH 17 - 42'
60#61 TWHC	TO SMH 17 - 30.5'	TO S.D. MH 2A - 60'±

LOT NUMBER	MEASUREMENT 1	MEASUREMENT 2
24	TO SMH 8 - 33'	TO SHC LOT 24 - 9'
25#26 TWHC	TO SMH 8 - 33.5'	TO SHC LOT 25 - 5.5'
27#28 TWHC	TO SMH 9 - 49.5'	TO SMH 8 - 78.5'
29	TO SMH 9 - 50'	TO SMH 10 - 42.5'
30	TO SMH 11 - 61'	TO SHC LOT 30 - 17'
31#32 TWHC	TO SMH 11 - 39.5'	TO SMH 10 - 47.5'
33#34 TWHC	TO SMH 11 - 34.7'	TO S.D. MH 10 - 40.5'
35	TO S.D. MH-10 - 19'	TO 4" INLET I-16 MH - 30'
36#37 TWHC	TO 4" INLET I-16 MH - 26.5'	TO 4" INLET I-18 MH - 30.3'
38#39 TWHC	TO 4" INLET I-19 MH - 31'	TO 4" S.D. MH 11 - 10'±
40#41 TWHC	TO 4" S.D. MH 11 - 56.5'	TO 4" F.H. - 36.5'
42#43 TWHC	TO 4" F.H. - 20.5'	TO 4" INLET I-18 MH - 55.5'
44#45 TWHC	TO 4" INLET I-18 MH - 9'	TO 4" F.H. - 83.7'
46#47 TWHC	TO 4" INLET I-18 MH 64.5'	TO SHC LOT 47 - 6'

LOT NUMBER	MEASUREMENT 1	MEASUREMENT 2
48#49 TWHC	TO 4" INLET I-23 MH - 68.5'	TO 4" INLET I-22 MH - 84.3'
50#51 TWHC	TO 4" INLET I-22 MH - 10.4'	TO SHC LOT 51 - 22'
52#53 TWHC	TO SMH 15 - 58.5'	TO SMH 16 - 83.5'
54#55 TWHC	TO SMH 16 - 14.7'	TO 4" INLET I-25 MH - 44.2'
56	TO SMH 16 - 31.7'	TO 4" INLET I-25 MH - 50.8'
57#58 TWHC	TO SMH 15 - 48'	TO SMH 16 - 72.5'
97#96 TWHC	TO 4" INLET I-23 MH - 38.5'	TO SHC LOT 96 - 16'
95#94 TWHC	TO 4" INLET I-21 MH - 91.5'	TO SHC LOT 94 - 5.5'
93#92 TWHC	TO 4" INLET I-21 MH - 36'	TO SHC LOT 92 - 26'
91#90 TWHC	TO SMH 12 - 32.5'	TO 4" INLET I-21 MH - 36'
89#88 TWHC	TO SMH 12 - 27'	TO 4" F.H. - 45'
87#86 TWHC	TO S.D. MH 11 - 47'	TO SHC LOT 86 - 22.6'
85	TO 4" INLET I-20 MH - 18'	TO 4" INLET I-17 MH - 51'
84#83 TWHC	TO 4" INLET I-17 MH 10.5'	TO SHC LOT 83 - 7'

* FOR AS-BUILT PURPOSES ONLY AS-BUILT 8-20-15

DEPARTMENT OF PUBLIC WORKS HOWARD COUNTY, MARYLAND

DEPARTMENT OF PLANNING & ZONING HOWARD COUNTY, MARYLAND

CHIEF, BUREAU OF UTILITIES DATE

CHIEF, DEVELOPMENT ENGINEERING DIVISION DATE

DES:				
DRN:				
CHK:				
DATE:	REV.	DATE	DESCRIPTION	BY

WATER HOUSE CONNECTION CHARTS

PARCEL NO. 4
600' SCALE MAP NO. 47 BLOCK NO. N/A

WALDEN WOODS
(BUILDABLE LOTS 1-97 & OPEN SPACE LOTS 98-102)
6TH ELECTION DISTRICT
HOWARD COUNTY, MARYLAND
CONTRACT NO.: 24-4784-D

SCALE

SHEET
10
OF
10