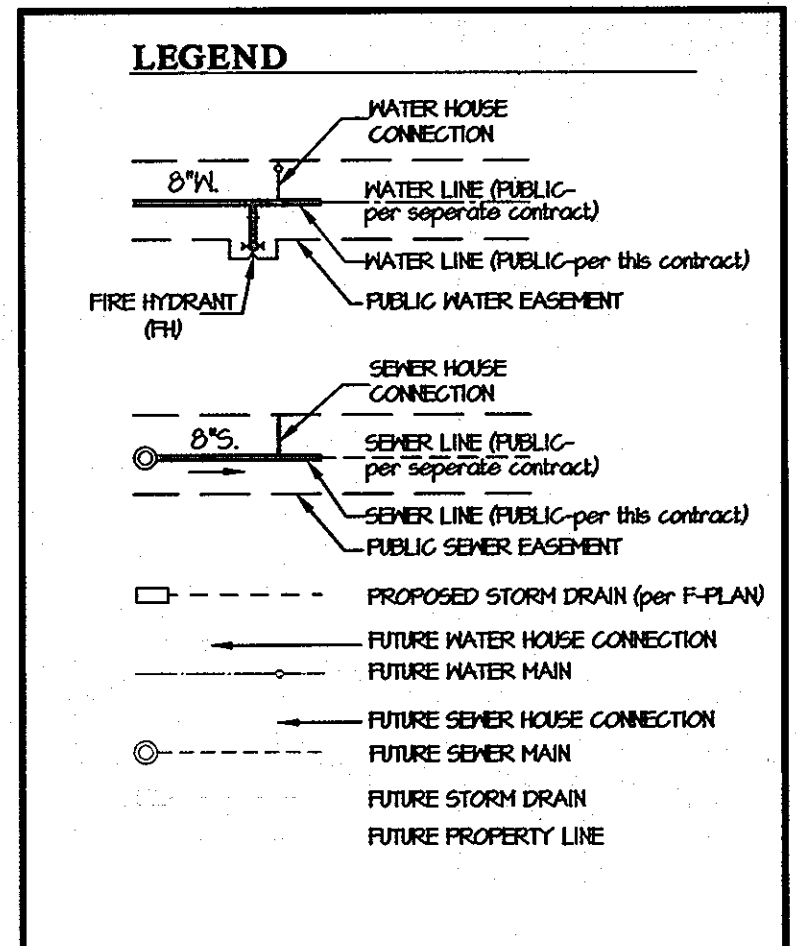


QUANTITIES				
ITEMS	QUANTITIES ESTIMATED	AS-BUILT		
		QUANTITIES	TYPE	MANUFACTURER/SUPPLIER
8" WATER MAIN	1184 L.F.	1184 L.F.	C 54	GRIFFIN PIPE
6" WATER MAIN	8 L.F.	10 L.F.	C 54	GRIFFIN PIPE
1 1/2" COPPER VWC		513	TYPE K	CAMBRIDGE LEE
8" 1/16 HB	2 EA.			
8" x 8" TEE	3 EA.			
8" x 6" FHT	2 EA.			
FIRE HYDRANT	2 EA.	2 EA.	C502/BB4	AMERICAN FLOW CONTROL
8" VALVE	4 EA.	4 EA.	GATE	AMERICAN FLOW CONTROL
6" VALVE	2 EA.	2 EA.	GATE	AMERICAN FLOW CONTROL
8" SEWER MAIN	850 L.F.	865	SDR 35	JM CABLE/NORTH AMERICAN
8" SEWER MAIN (D.I.P.)	79 L.F.	79 L.F.	C 52	GRIFFIN PIPE
MANHOLES	7 EA.	7 EA.	PRE-CAST	ADS

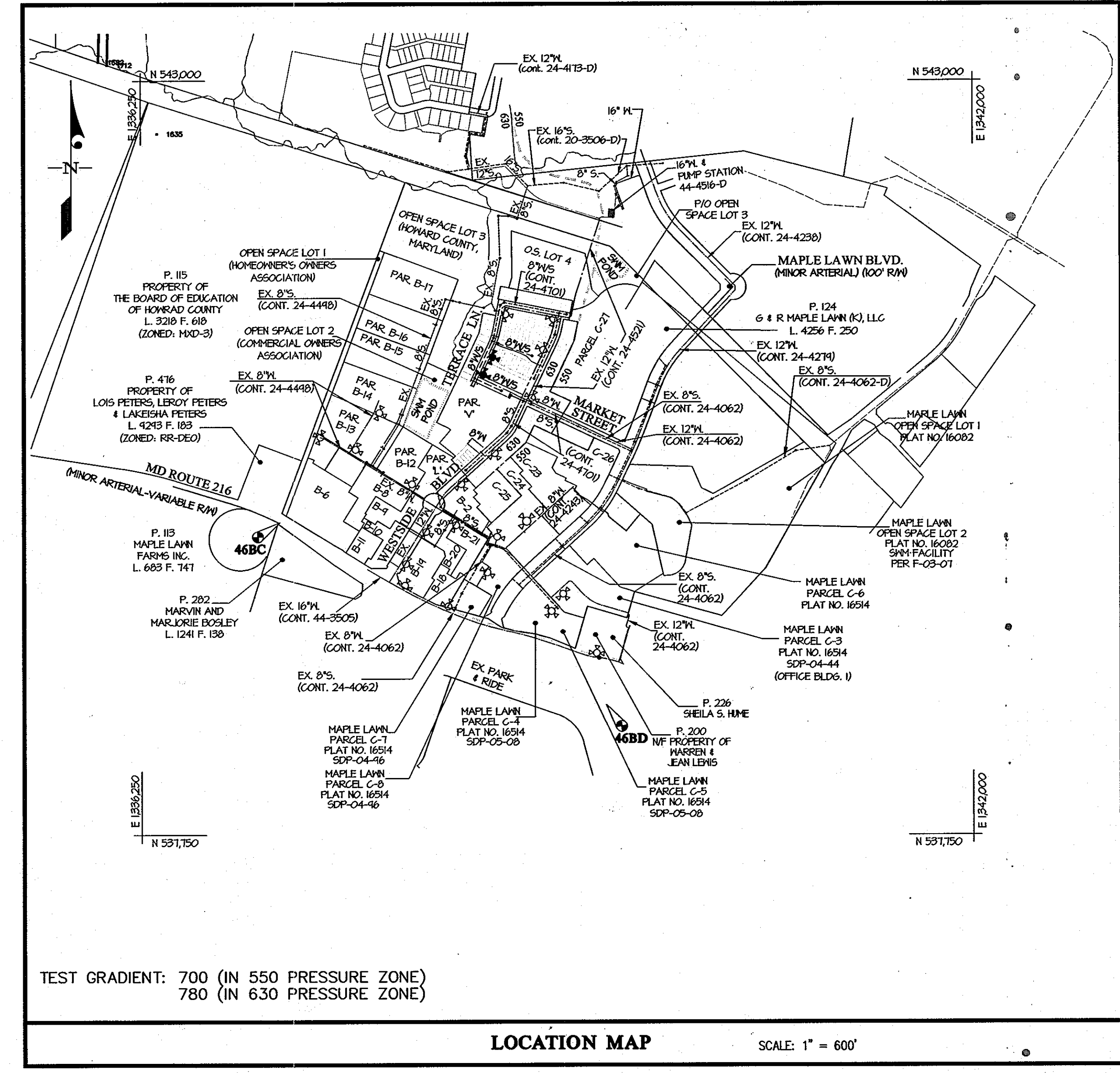
NAME OF UTILITY CONTRACTOR: \_\_\_\_\_

SURVEY AND CHECKBOX: \_\_\_\_\_  
 DRAFTING DIV. AS-BUILT DATE: 6-24-13

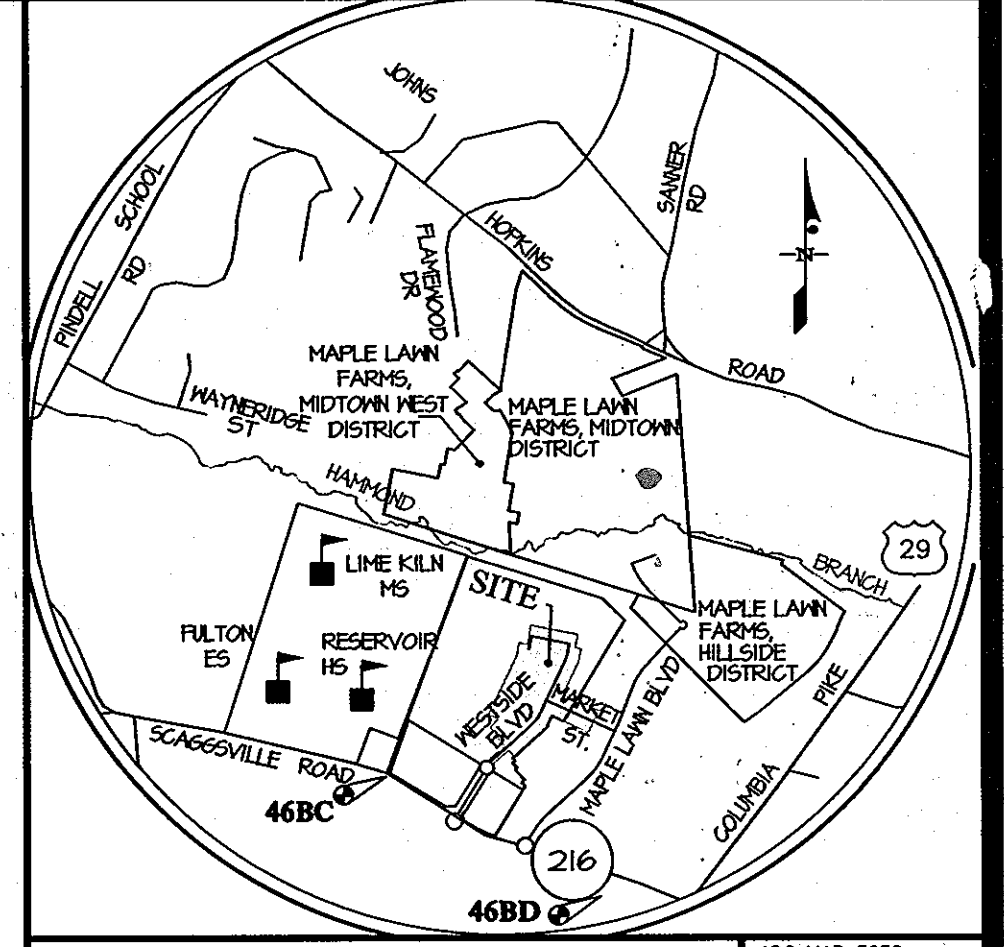


**SHEET INDEX**

- 1 WATER and SEWER TITLE SHEET
- 2 WATER and SEWER PLAN
- 3 WATER and SEWER PROFILES



TYPE OF BUILDING	RESIDENTIAL
NUMBER OF UNITS	43
NUMBER OF S.H.C.'s	30
NUMBER OF W.H.C.'s	21
AREA OF COMMERCIAL LOT/PARCEL	N/A
SEWER SHED	LITTLE PATUENT
PUMPING STATION	N/A



**BENCHMARKS**

46BC ELEV. = 412.16 N = 534925.13 E = 1381205.71 STANDARD DISC ON CONCRETE MONUMENT	46BD ELEV. = 431.17 N = 530656.76 E = 1394461.55 STANDARD DISC ON CONCRETE MONUMENT
--	--

- GENERAL NOTES**
- PART I**
- APPROXIMATE LOCATIONS OF EXISTING MAINS ARE SHOWN. THE CONTRACTOR SHALL TAKE ALL NECESSARY PRECAUTIONS TO PROTECT EXISTING MAINS AND SERVICES AND MAINTAIN UNINTERRUPTED SERVICE. ANY DAMAGE INCURRED SHALL BE REPAIRED IMMEDIATELY TO THE SATISFACTION OF THE ENGINEER AT THE CONTRACTOR'S EXPENSE.
  - TOPOGRAPHIC FIELD SURVEYS WERE PERFORMED ON AUGUST 4, 2011 BY LEO M. RADER.
  - HORIZONTAL AND VERTICAL SURVEY CONTROLS
  - THE COORDINATES SHOWN ON THE DRAWINGS ARE BASED ON MARYLAND STATE REFERENCE SYSTEM NAD 83/11 AS PROJECTED BY HOWARD COUNTY GEODETIC CONTROL STATIONS NO. 46BC AND NO. 46BD.
  - ALL VERTICAL CONTROLS ARE BASED ON NAVD83. VERTICAL CONTROLS PROVIDED ON THE DRAWINGS ARE STANDARD DISCS ON CONCRETE MONUMENTS.
  - ALL PIPE ELEVATIONS SHOWN ARE INVERT ELEVATIONS UNLESS OTHERWISE NOTED ON THE PLANS.
  - CLEAR ALL UTILITIES BY A MINIMUM OF 12 INCHES. CLEAR ALL POLES BY 5'-0" MINIMUM OR TUNNEL AS REQUIRED UNLESS OTHERWISE NOTED. IF THE OWNER HAS CONTACTED THE UTILITY COMPANIES AND HAS MADE ARRANGEMENTS FOR BRACING OF POLES AS SHOWN ON THE DRAWINGS, IN THE EVENT THE CONTRACTOR'S WORK REQUIRES THE BRACING OF ADDITIONAL POLES, ANY COST INCURRED BY THE OWNER FOR THE BRACING OF ADDITIONAL POLES OR DAMAGES SHALL BE DEDUCTED FROM MONIES OWED BY THE CONTRACTOR. THE CONTRACTOR SHALL COORDINATE WITH THE UTILITY COMPANIES TO SCHEDULE THE BRACING OF THE POLES.
  - FOR DETAILS NOT SHOWN ON THE DRAWINGS AND FOR MATERIALS AND CONSTRUCTION METHODS, USE HOWARD COUNTY DESIGN MANUAL, VOLUME IV, STANDARD SPECIFICATIONS AND DETAILS FOR CONSTRUCTION (LATEST EDITION). THE CONTRACTOR SHALL HAVE A COPY OF VOLUME IV ON THE JOB.
  - WHERE TEST PITS HAVE BEEN MADE ON EXISTING UTILITIES, THEY ARE NOTED BY THE SYMBOL AT THE LOCATIONS OF THE TEST PITS. A NOTE OR NOTES CONTAINING THE RESULTS OF THE TEST PIT OR PITS IS INCLUDED ON THE DRAWINGS. EXISTING UTILITIES IN THE VICINITY OF THE PROPOSED WORK FOR WHICH TEST PITS HAVE NOT BEEN DUG SHALL BE LOCATED BY THE CONTRACTOR TWO WEEKS IN ADVANCE OF CONSTRUCTION OPERATIONS AT HIS OWN EXPENSE.
  - THE CONTRACTOR SHALL NOTIFY THE FOLLOWING UTILITY COMPANIES OR AGENCIES AT LEAST FIVE WORKING DAYS BEFORE STARTING WORK SHOWN ON THESE PLANS:
 

AT & T	1-800-252-1133
CONTRACTOR SERVICES	410-637-9113
BGE (EMERGENCY)	410-685-0123
BUREAU OF UTILITIES	410-313-4400
COLORADO PIPELINE COMPANY	410-785-1340
MES UTILITY	1-800-291-7777
STATE HIGHWAY ADMINISTRATION	410-581-5533
VERIZON	1-800-743-0053/410-224-4210
  - TREES AND SHRUBS ARE TO BE PROTECTED FROM DAMAGE TO THE MAXIMUM EXTENT. TREES AND SHRUBS LOCATED WITHIN THE CONSTRUCTION STRIP ARE NOT TO BE REMOVED OR DAMAGED BY THE CONTRACTOR.
  - THE CONTRACTOR SHALL REMOVE TREES, STUMPS, AND ROOTS ALONG THE LINE OF EXCAVATION. PAYMENT FOR SUCH REMOVAL SHALL BE INCLUDED IN THE UNIT PRICE BID FOR CONSTRUCTION OF THE MAIN.
  - THE CONTRACTOR SHALL NOTIFY THE BUREAU OF HIGHWAYS, HOWARD COUNTY, AT (410)813-7450 AT LEAST FIVE WORKING DAYS BEFORE OPEN CUTTING OR BORING/JACKING OF ANY COUNTY ROAD FOR LAYING WATER/SEWER MAINS OR HOUSE CONNECTIONS. THE APPROVAL OF THESE DRAWINGS WILL CONSTITUTE COMPLIANCE WITH DPM REQUIREMENTS PER SECTION 18.14(M) OF THE HOWARD COUNTY CODE.
- PART II WATER**
- ALL WATER MAINS TO BE D.I.P. CLASS 54 UNLESS OTHERWISE NOTED.
  - TOPS OF ALL WATER MAINS TO HAVE A MINIMUM OF 3'-6" OF COVER UNLESS OTHERWISE NOTED.
  - 3" VALVES ADJACENT TO TEES SHALL BE STRAPPED TO TEES.
  - ALL FITTINGS SHALL BE BUTTRESSED OR ANCHORED WITH CONCRETE IN ACCORDANCE WITH THE STANDARD DETAILS UNLESS OTHERWISE PROVIDED FOR ON THE DRAWINGS.
  - FIRE HYDRANTS SHALL BE SET TO THE BURY LINE ELEVATIONS SHOWN ON THE DRAWINGS. ALL FIRE HYDRANTS SHALL BE INSTALLED IN ACCORDANCE WITH THE STANDARD DETAILS. THE SOIL AROUND THE FIRE HYDRANT SHALL BE COMPACTED IN ACCORDANCE WITH SECTION 1000 AND LOGS OF THE STANDARD SPECIFICATIONS.
  - THE CONTRACTOR SHALL NOT OPERATE ANY WATER MAIN VALVES ON THE EXISTING WATER SYSTEM.
  - TRACER WIRE AND CONTINUITY TEST STATIONS SHALL BE INSTALLED ON ALL DIP AND PVC WATER MAINS IN ACCORDANCE WITH THE HOWARD COUNTY DESIGN MANUAL.
  - FOR PVC WATER MAINS, ALL RECORDS FOR THE QUALITY CONTROL AND QUALIFICATION TEST REQUIREMENTS NOTED IN SECTION 51 OF AWWA STANDARD C900 FOR PVC PRESSURE PIPE SHALL BE SUBMITTED WITH THE PIPE MATERIAL CERTIFICATIONS OR SHOP DRAWINGS PRIOR TO APPROVAL OF THE MATERIAL FOR USE. THE TEST RECORDS SHALL BE FOR THE PIPE TO BE INSTALLED UNDER THIS CONTRACT. ALL PVC PIPE SHALL CONTAIN MARKINGS TO ALLOW CROSS REFERENCING OF THE PIPE SUPPLIED TO THE TEST RECORDS RECEIVED.
  - UNLESS OTHERWISE NOTED ON THE PLANS OR IN THE SPECIFICATIONS, SEVENTEEN (17) ROAD SACRIFICIAL ANODES SHALL BE INSTALLED ON ALL VALVES AND METALLIC FITTINGS USED WITH PVC WATER MAINS IN ACCORDANCE WITH VOLUME IV, STANDARD SPECIFICATIONS AND DETAILS FOR CONSTRUCTION. MAGNESIUM ANODES SHALL BE INSTALLED ON ALL VALVES AND DUCTILE IRON FITTINGS INCLUDING RESTRAINTS AND HARNESSES. ZINC ANODES SHALL BE INSTALLED ON ALL STAINLESS STEEL FITTINGS AND SADDLES USED WITH PVC MAINS. ALL TEES USED WITH PVC MAINS SHALL BE DUCTILE IRON.
- PART III**
- ALL SEWER MAINS SHALL BE DIP OR P.V.C. UNLESS OTHERWISE NOTED.
  - ALL MANHOLES SHALL BE 4' - 0" INSIDE DIAMETER UNLESS OTHERWISE NOTED.
  - FORCE MAINS SHALL BE D.I.P. ONLY.
  - MANHOLES SHOWN WITH 12" AND 18" WALLS ARE FOR BRICK MANHOLES ONLY.
  - MANHOLES DESIGNATED M.T. IN PLAN AND PROFILE SHALL HAVE WATERTIGHT FRAME AND COVERS, STANDARD DETAIL 6552 WHERE WATERTIGHT FRAMES AND COVERS ARE USED, SET TOP OF FRAME 1' - 6" ABOVE FINISHED GRADE UNLESS OTHERWISE NOTED ON THE DRAWINGS.
  - HOUSES WITH THE SYMBOL INDICATES THAT CELLAR CANNOT BE SERVED.

SEDIMENT CONTROL MEASURES WILL BE IMPLEMENTED IN ACCORDANCE WITH SECTION 308 OF THE SPECIFICATIONS AND WITH ROAD DRAWINGS F-13-003; FOR SEDIMENT AND EROSION CONTROL.

REVIEWED FOR HOWARD SOIL CONSERVATION DISTRICT AND MEETS TECHNICAL REQUIREMENT.

SIGNATURE: \_\_\_\_\_ DATE: \_\_\_\_\_

U.S.D.A. NATURAL RESOURCES CONSERVATION SERVICE

THIS DEVELOPMENT PLAN IS APPROVED FOR SOIL EROSION AND SEDIMENT CONTROL BY THE HOWARD SOIL CONSERVATION DISTRICT.

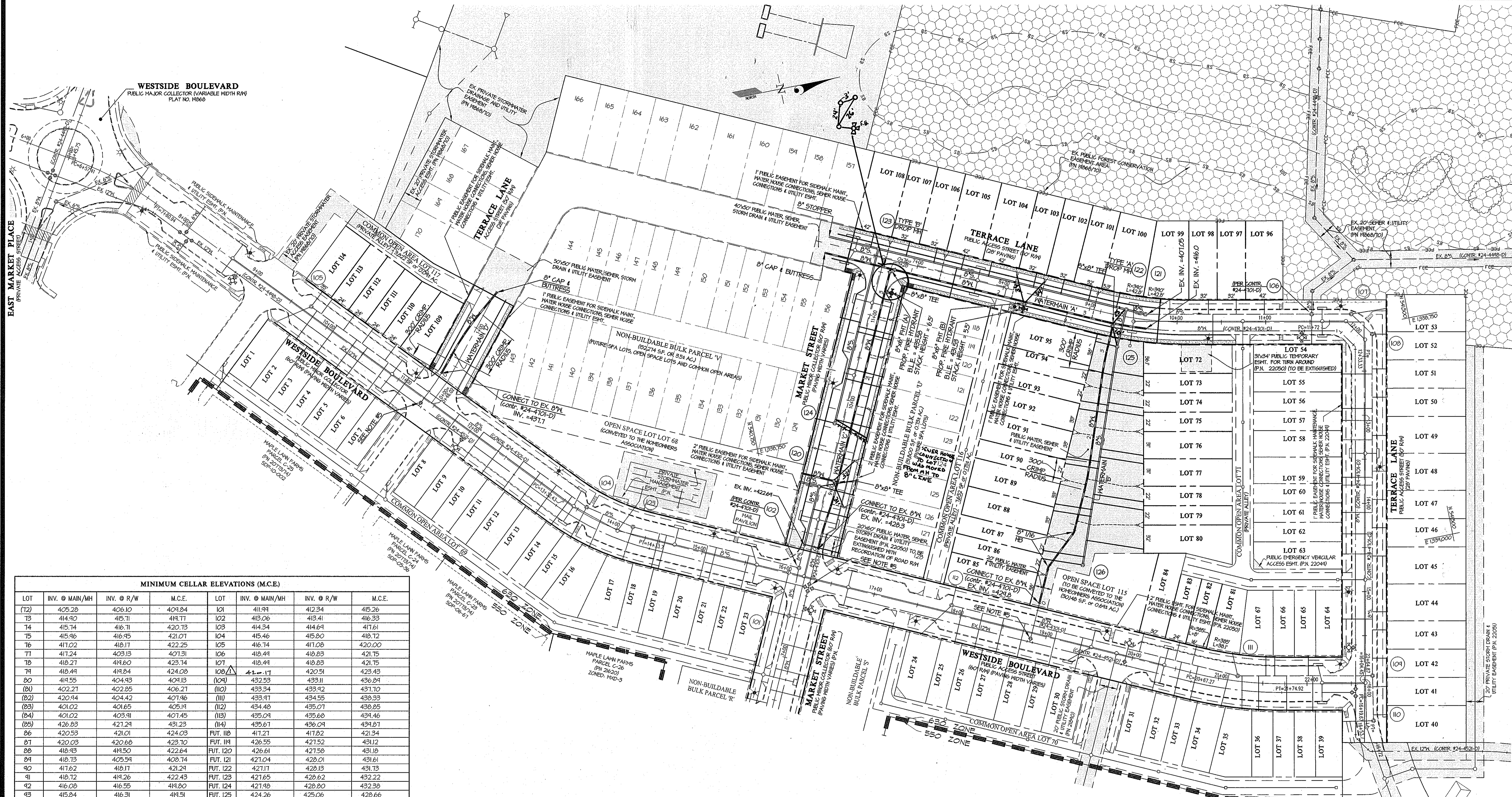
APPROVED: *John R. Adair* DATE: 11/14/12

CONTRACT No. 24-4749-D  
 MAPLE LAWN FARMS  
 WESTSIDE DISTRICT - AREA 3  
 LOTS 72 thru 114, OPEN SPACE LOT 115  
 COMMON OPEN AREA LOTS 116 and 117  
 and NON-BUILDABLE BULK PARCEL 'V'  
 HOWARD COUNTY, MARYLAND  
 DEPARTMENT OF PUBLIC WORKS

DEPARTMENT OF PUBLIC WORKS HOWARD COUNTY, MARYLAND DATE: 11/12	DEPARTMENT OF PLANNING AND ZONING HOWARD COUNTY, MARYLAND DATE: 11/21/12	<b>GLW GUTSCHICK LITTLE &amp; WEBER, P.A.</b> CIVIL ENGINEERS, LAND SURVEYORS, LAND PLANNERS, LANDSCAPE ARCHITECTS 3909 NATIONAL DRIVE - SUITE 250 - BURTONSVILLE OFFICE PARK BURTONSVILLE, MARYLAND 20886 TEL: 301-421-6024 BALT: 410-880-1820 DC/VA: 301-989-2524 FAX: 301-421-4186	DATE: OCTOBER, 2012 G.L.W. No. 11002 PROFESSIONAL CERTIFICATION I HEREBY CERTIFY THAT THESE PLANS WERE PREPARED OR APPROVED BY ME, AND THAT I AM A DULY LICENSED PROFESSIONAL ENGINEER UNDER THE LAWS OF THE STATE OF MARYLAND, LICENSE NO. 12975 EXP. DATE: MAY 26, 2014 10-19-17	WATER and SEWER TITLE SHEET REVISION: AS-BUILT DATE: 7-12-13	<b>MAPLE LAWN FARMS</b> CONTRACT No. 24-4749-D WESTSIDE DISTRICT - AREA 3 LOTS 72 THRU 114, OPEN SPACE LOT 115, COMMON OPEN AREA LOTS 116 AND 117 AND NON-BUILDABLE BULK PARCEL 'V' HOWARD COUNTY, MARYLAND ELECTION DISTRICT No. 5	SCALE: AS SHOWN SHEET: 1 OF 3
--	--	---	---	--	--	----------------------------------

PREPARED FOR:  
 MAPLE LAWN FARMS I, LLC  
 SUITE 300 WOODHOLME CENTER  
 1829 REISTERSTOWN ROAD  
 BALTIMORE, MD 21208  
 ATTN: MARK BENNETT  
 410-484-8400





**WESTSIDE BOULEVARD**  
PUBLIC MAJOR COLLECTOR (VARIABLE WIDTH R/W)  
PLAT NO. 1866

**EAST MARKET PLACE**  
(PRIVATE STREET)

**WESTSIDE BOULEVARD**  
PUBLIC MAJOR COLLECTOR (VARIABLE WIDTH R/W)

**MAPLE LAWN FARMS**  
PARCEL C-25  
(P.N. 201940)  
ZONED: MWO-3

**MINIMUM CELLAR ELEVATIONS (M.C.E.)**

LOT	INV. @ MAIN/MH	INV. @ R/W	M.C.E.	LOT	INV. @ MAIN/MH	INV. @ R/W	M.C.E.
12	405.28	406.10	404.84	101	411.94	412.34	415.26
13	414.90	415.71	414.71	102	415.06	415.41	416.33
14	415.74	416.71	420.13	103	414.34	414.64	417.61
15	415.96	416.95	421.07	104	415.46	415.80	418.72
16	417.02	418.17	422.25	105	416.74	417.08	420.00
17	417.24	420.13	407.31	106	418.44	418.83	421.75
18	418.27	419.60	423.74	107	418.44	418.83	421.75
19	418.44	419.84	424.08	108	420.51	420.51	423.43
20	419.55	404.93	404.13	109	432.53	433.11	436.84
21	422.27	402.85	406.27	110	433.34	433.92	437.10
22	420.44	404.42	407.46	111	433.47	434.55	438.33
23	401.02	401.65	405.14	112	434.48	435.07	438.25
24	401.02	403.91	407.45	113	435.04	435.68	434.46
25	426.83	427.24	431.23	114	435.61	436.04	434.87
26	420.53	421.01	424.03	FUT. 118	417.21	417.82	421.34
27	420.03	420.68	423.70	FUT. 119	426.55	427.52	431.12
28	418.93	419.50	422.64	FUT. 120	426.61	427.58	431.18
29	418.73	405.54	408.74	FUT. 121	427.04	428.01	431.61
30	417.62	418.17	421.24	FUT. 122	427.17	428.13	431.73
31	418.72	419.26	422.43	FUT. 123	427.65	428.62	432.22
32	416.08	416.55	419.80	FUT. 124	427.98	428.80	432.38
33	415.84	416.31	419.51	FUT. 125	424.26	425.06	428.66
34	415.34	415.71	414.01	FUT. 126	424.26	425.06	428.66
35	404.50	404.85	400.13	FUT. 127	423.80	424.40	428.00
36	403.86	404.21	407.13	FUT. 128	422.84	423.94	427.24
37	404.42	405.26	408.18	FUT. 129	427.98	428.42	432.38
38	405.40	405.74	408.66	FUT. 130	426.50	427.11	431.07
39	406.43	406.77	404.64				
40	410.70	411.05	413.97				

- NOTES:**
- \* DENOTES SHC'S WHICH NEED TO BE RUN AT 1.0%. ALL OTHER SHC'S TO BE RUN AT 2.0%
  - LOTS 115 THROUGH 117 ARE OPEN SPACE AND COMMON OPEN AREA LOTS
  - ( ) DENOTES LOTS WHOSE CONNECTION WAS PROVIDED UNDER CONT. #24-4701-D. INFORMATION SHOWN WAS TAKEN FROM THAT PLAN SET.

- NOTES:**
- ALL SHC'S SHOWN SERVING NUMBERED LOTS ARE 4"
  - ALL MANHOLES WILL BE STANDARD 4'-0" (6 5/12)
  - OUTSIDE METERS WILL BE PER HOWARD COUNTY DETAIL N 3.92 FOR TWIN CONNECTIONS AND DETAIL N 3.28 FOR SINGLE CONNECTIONS.
  - ALL 1/2" SHC'S SHOWN SERVING NUMBERED LOTS ARE 1/2"
  - EXISTING VALVE TO BE CLOSED TO CONNECT PROPOSED WATER MAIN.

**SEWER MANHOLE INFORMATION**

1#1	LOCATION
120	N 540,810 E 1338,806
121	N 541,201 E 1338,681
122	N 541,814 E 1338,671
123	N 540,821 E 1338,554
124	N 540,842 E 1338,794
125	N 541,711 E 1338,711
126	N 541,084 E 1338,952

**FITTING INFORMATION**

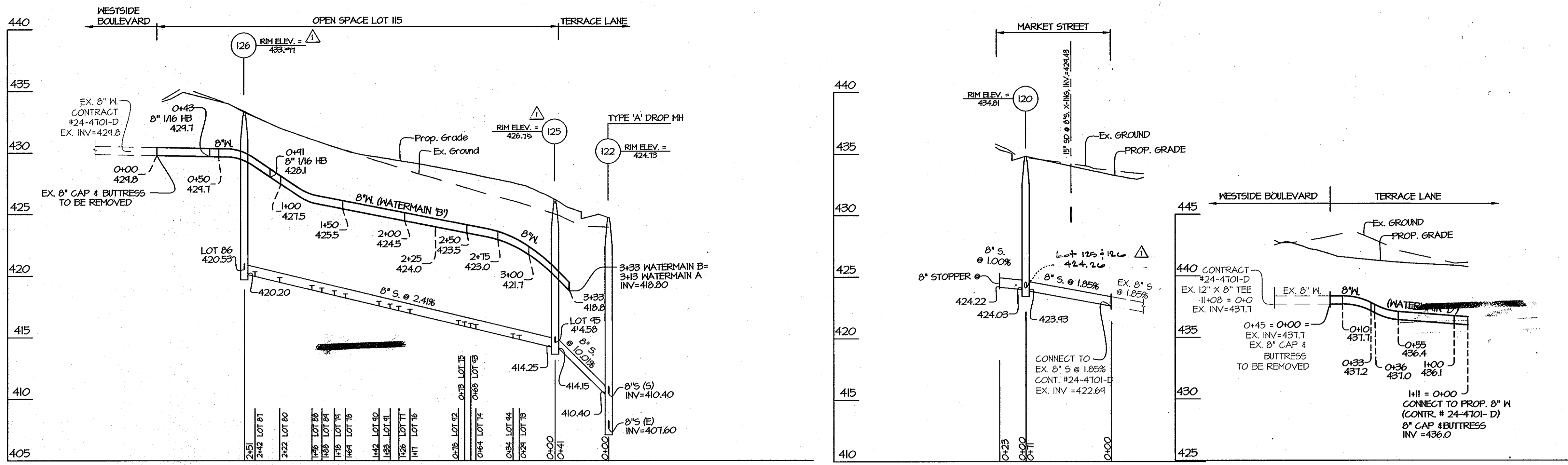
WATER MAIN 'A'	WATER MAIN 'B'	WATER MAIN 'C'
0+16	0+43	0+14
2+32	0+41	0+14
3+30	0+41	3+02
		3+02

**MAPLE LAWN FARMS**  
PARCEL C-21  
(P.N. 201940)  
ZONED: MWO-3

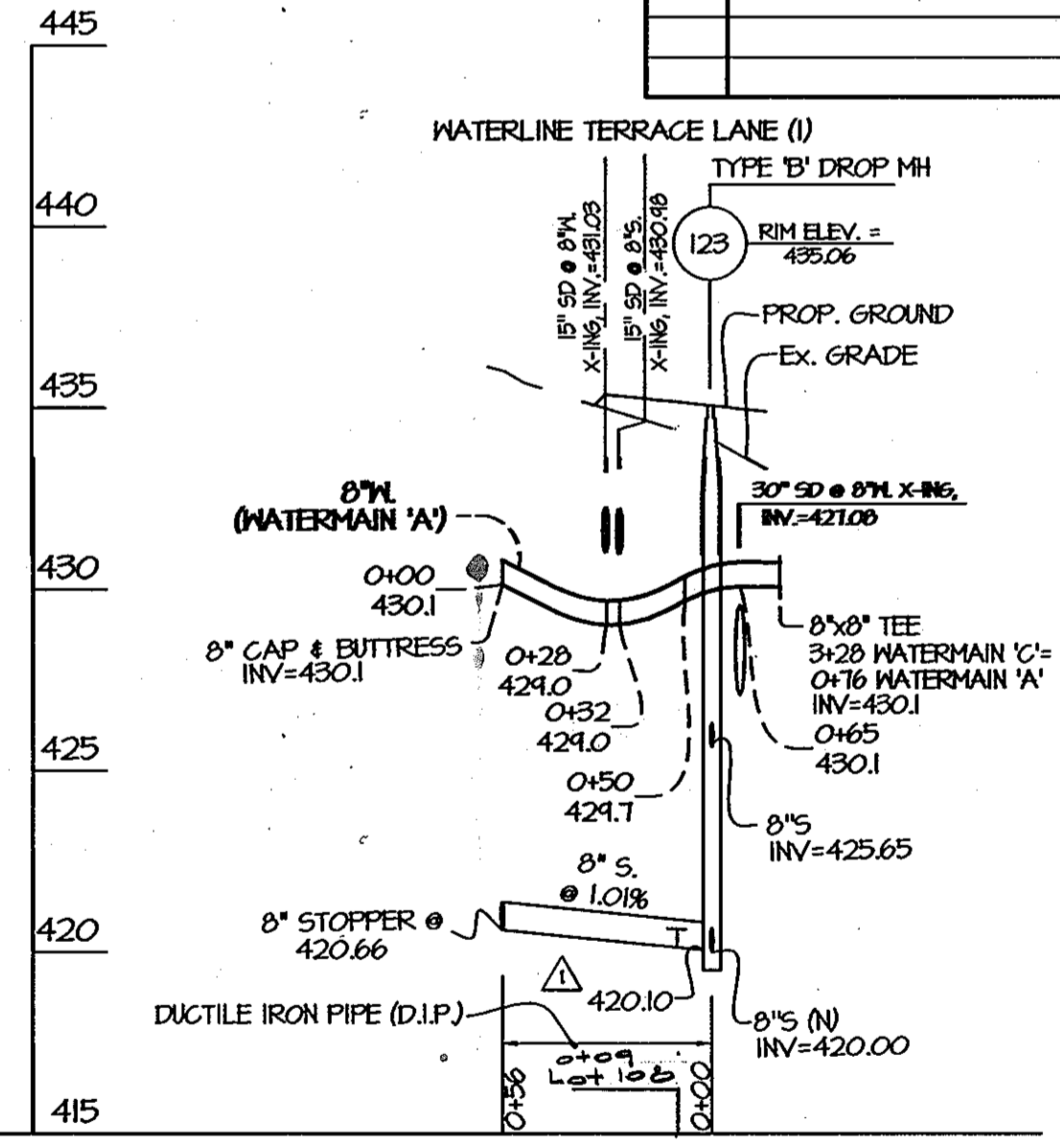
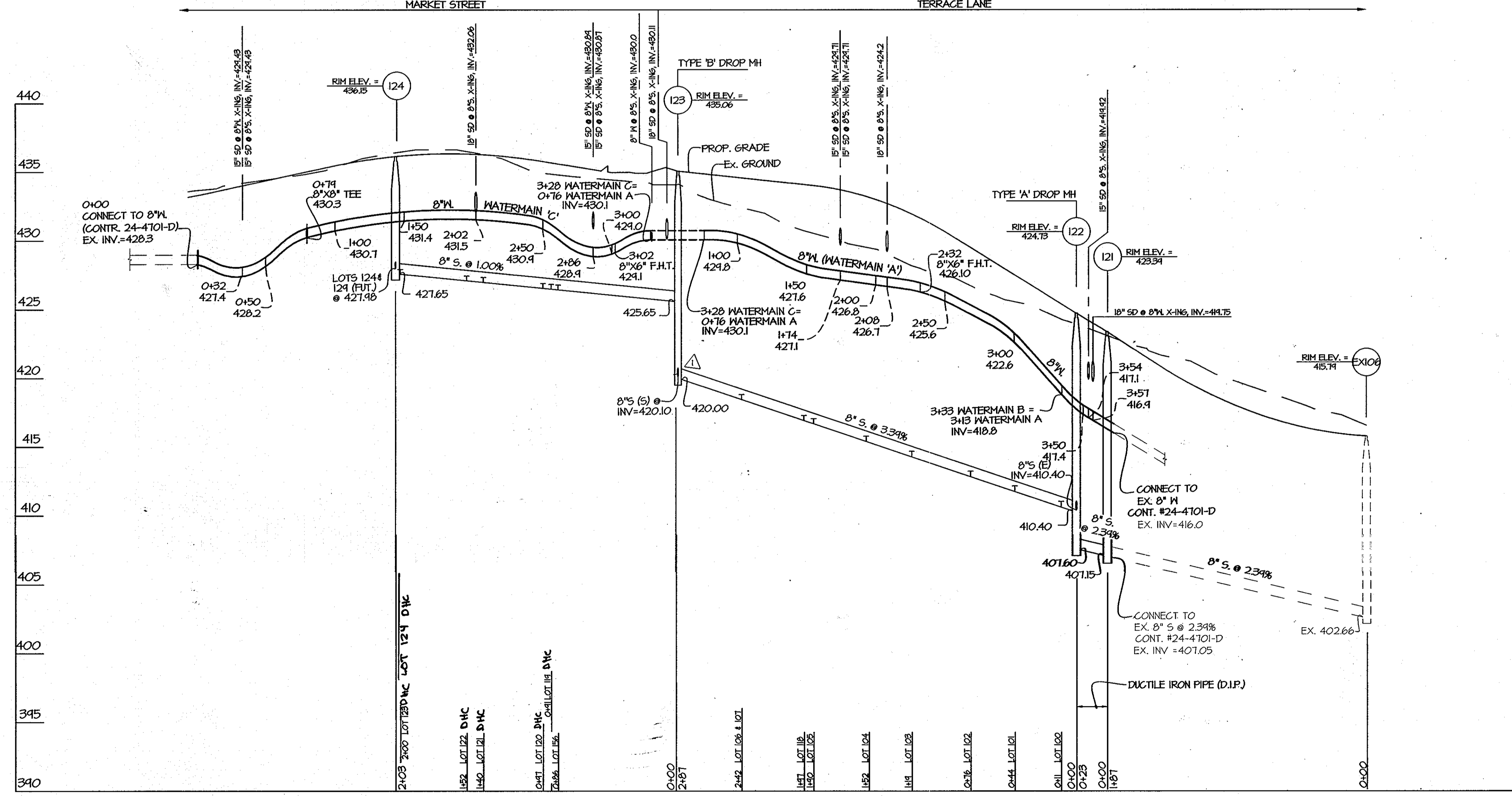
PREPARED FOR:  
**MAPLE LAWN FARMS I, LLC**  
SUITE 300 WOODHOLME CENTER  
1829 REISTERSTOWN ROAD  
BALTIMORE, MD 21208  
ATTN: MARK BENNETT  
410-484-8400

<b>DEPARTMENT OF PUBLIC WORKS</b> HOWARD COUNTY, MARYLAND   CHIEF, BUREAU OF UTILITIES	<b>DEPARTMENT OF PLANNING AND ZONING</b> HOWARD COUNTY, MARYLAND   CHIEF, DEVELOPMENT ENGINEERING DIVISION	<b>GLW GUTSCHICK LITTLE &amp; WEBER, P.A.</b> CIVIL ENGINEERS, LAND SURVEYORS, LAND PLANNERS, LANDSCAPE ARCHITECTS 3909 NATIONAL DRIVE - SUITE 250 - BURTONSVILLE OFFICE PARK TEL: 301-421-4024 BALT. 410-880-1820 DC/VA. 301-589-2524 FAX: 301-421-4188	DATE OCTOBER, 2012	<b>PROFESSIONAL CERTIFICATION</b> I HEREBY CERTIFY THAT THESE PLANS WERE PREPARED OR APPROVED BY ME, AND THAT I AM A DULY LICENSED PROFESSIONAL ENGINEER UNDER THE LAWS OF THE STATE OF MARYLAND, LICENSE NO. 12375 EXP. DATE: MAY 26, 2014	REVISION 15-BUILT	DATE 7-12-12	<b>MAPLE LAWN FARMS</b> CONTRACT No. 24-4749-D WESTSIDE DISTRICT - AREA 3 LOTS 72 THRU 114, OPEN SPACE LOT 115, COMMON OPEN AREA LOTS 116 AND 117 AND NON-BUILDABLE BULK PARCEL 'V' HOWARD COUNTY, MARYLAND ELECTION DISTRICT No. 5	SCALE 1" = 50'
			G.L.W. No. 11002		BY NO  REVISION DATE 600' SCALE MAP NO. 46 BLOCK NO. 4	SHEET 2 OF 3		





AS-BUILT INFORMATION					
LOT #	ADDRESS	WATER HOUSE CONNECTION AS BUILT		SEWER HOUSE CONNECTION AS BUILT	
		LOCATION DIM. 1	LOCATION DIM. 2	LOCATION DIM. 1	LOCATION DIM. 2
72	TERRACE LANE				
73	TERRACE LANE	8' MAIN TO WM 39	SMH-125 TO WMC 94'	46' TO SMH 125	21' TO WM 73/74
74	TERRACE LANE		39' SMH-125 TO WMC 64'	23' TO WM 73/74	23' TO WM 73/76
75	TERRACE LANE		45' SMC-74 TO WMC 33'	29' TO WM 73/74	16' TO WM 75/76
76	TERRACE LANE		45' SMC-74 TO WMC 29'	22' TO WM 75/76	32' TO WM 77/78
77	TERRACE LANE		59' SMH-126 TO WMC 192'	40' TO WM 75/76	24' TO WM 77/78
78	TERRACE LANE		54' SMH-126 TO WMC 106'	20' TO WM 77/78	20' TO WM 79/80
79	TERRACE LANE		66' SMH-126 TO WMC 83'	28' TO WM 77/78	28' TO WM 79/80
80	TERRACE LANE		66' SMH-126 TO WMC 78'	29' TO WM 79/80	73' TO SMH 126
81	WESTSIDE BLVD.				
82	WESTSIDE BLVD.				
83	WESTSIDE BLVD.				
84	WESTSIDE BLVD.				
85	WESTSIDE BLVD.	8" MAIN TO WM 4'	SMH-126 TO WMC 52'	SMH-126 TO WMC 18'	WESTSIDE BLVD.
86	WESTSIDE BLVD.		4' SMH-126 TO WMC 51'	19' TO WM 95/96	47' TO MH 126
87	WESTSIDE BLVD.		16' SMH-126 TO WMC 52'	18' TO WM 87/88	41' TO MH 126
88	WESTSIDE BLVD.		16' SMH-126 TO WMC 52'	21' TO WM 87/88	29' TO WM 89/90
89	WESTSIDE BLVD.		28' SMC-91 TO WMC 30'	24' TO WM 87/88	33' TO WM 89/90
90	WESTSIDE BLVD.		26' SMC-91 TO WMC 25'	26' TO WM 89/90	28' TO WM 91/92
91	WESTSIDE BLVD.		14' SMC-91 TO WMC 27'	27' TO WM 89/90	28' TO WM 91/92
92	WESTSIDE BLVD.		14' SMC-91 TO WMC 33'	27' TO WM 91/92	26' TO WM 93/94
93	WESTSIDE BLVD.		17' SMC-126 TO WMC 68'	35' TO WM 91/92	23' TO WM 93/94
94	WESTSIDE BLVD.		17' SMC-126 TO WMC 57'	18' TO WM 93/94	33' TO SMC 95
95	WESTSIDE BLVD.		23' SMC-126 TO WMC 75'	33' TO SMC 94	26' TO SMH 125
96	TERRACE LANE				
97	TERRACE LANE				
98	TERRACE LANE				
99	TERRACE LANE				
100	TERRACE LANE	8" MAIN TO WM 20	SMH-122 TO WMC 69'	22' TO WM 100/101	26' TO MH 122
102	TERRACE LANE				
103	TERRACE LANE				
104	TERRACE LANE				
105	TERRACE LANE				
106	TERRACE LANE				
107	TERRACE LANE				
108	TERRACE LANE				
109	TERRACE LANE				
110	WESTSIDE BLVD.				
111	WESTSIDE BLVD.				
112	WESTSIDE BLVD.				
113	WESTSIDE BLVD.				
114	WESTSIDE BLVD.				
118	MARKET STREET	8" MAIN TO WM 11'	MH 28 TO WMC 35'	47' TO WM 105/106	52' TO SMC 105
119	MARKET STREET		11' MH 28 TO WMC 27'	19' TO WM 108/119	21' TO WM 120/121
120	MARKET STREET		11' MH 27 TO WMC 43'	23' TO WM 108/119	26' TO WM 120/121
121	MARKET STREET		11' MH 27 TO WMC 41'	25' TO WM 120/121	28' TO WM 122/123
122	MARKET STREET		11' MH 27 TO WMC 46'	26' TO WM 120/121	26' TO WM 122/123
123	MARKET STREET		11' MH 27 TO WMC 52'	21' TO WM 122/123	42' TO MH 124
124	MARKET STREET		11' SMH 120 TO WMC 61'	35' TO WM 122/123	48' TO MH 124
125	MARKET STREET		11' SMH 120 TO WMC 57'	26' TO SMC LOT 126	43' TO MH 124
126	MARKET STREET		12' MH 26 TO WMC 44'	26' TO SMC LOT 126	41' TO MH 124
127	MARKET STREET		12' MH 26 TO WMC 37'	40' TO SMC LOT 126	47' TO MH 124
128	MARKET STREET		13' MH 26 TO WMC 37'	40' TO SMC LOT 127	77' TO MH 124
129	MARKET STREET		20' SMH 124 TO WMC 47'	27' TO MH 124	33' TO WM 129
156	MARKET STREET				58' TO WM 118/119
101	TERRACE LANE				38' TO MH 122



PREPARED FOR:  
 MAPLE LAWN FARMS I, LLC  
 SUITE 300 WOODHOLME CENTER  
 1829 REISTERSTOWN ROAD  
 BALTIMORE, MD 21208  
 ATTN: MARK BENNETT  
 410-484-8400

DEPARTMENT OF PUBLIC WORKS HOWARD COUNTY, MARYLAND 	DEPARTMENT OF PLANNING AND ZONING HOWARD COUNTY, MARYLAND 	<b>GLW</b> GUTSCHICK LITTLE & WEBER, P.A. CIVIL ENGINEERS, LAND SURVEYORS, LAND PLANNERS, LANDSCAPE ARCHITECTS 3909 NATIONAL DRIVE - SUITE 250 - BURTONVILLE OFFICE PARK BURTONVILLE, MARYLAND 20866 TEL: 301-421-4024 BAL: 410-880-1820 DC/VA: 301-989-2524 FAX: 301-421-4186	DATE OCTOBER, 2012	PROFESSIONAL CERTIFICATION I HEREBY CERTIFY THAT THESE PLANS WERE PREPARED OR APPROVED BY ME AND THAT I AM A DULY LICENSED PROFESSIONAL ENGINEER UNDER THE LAWS OF THE STATE OF MARYLAND. LICENSE NO. 12975 EXP. DATE: May 26, 2014 	REV. 1 Rev. rim elev. for W123122, s/c for Lot 103 10/2/12	SCALE AS SHOWN
			G.L.W. No. 11002		REV. 2 AS-BUILT	
CHIEF, BUREAU OF UTILITIES DATE: 11/21/12		CHIEF, DEVELOPMENT ENGINEERING DIVISION DATE: 11/21/12		WATER & SEWER PROFILES 600' SCALE MAP NO. 46 BLOCK NO. 4		MAPLE LAWN FARMS CONTRACT No. 24-4749-D WESTSIDE DISTRICT - AREA 3 LOTS 72 THRU 114, OPEN SPACE LOT 115, COMMON OPEN AREA LOTS 116 AND 117 AND NON-BUILDABLE BULK PARCEL 'V' HOWARD COUNTY, MARYLAND ELECTION DISTRICT No. 5