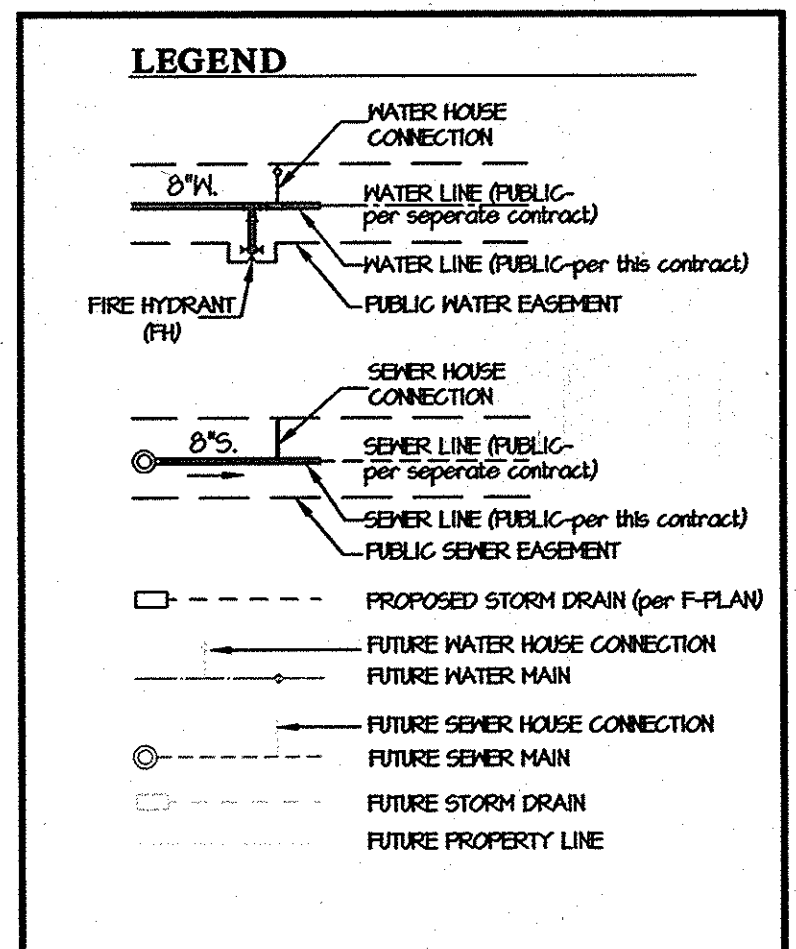


QUANTITIES				
ITEMS	QUANTITIES ESTIMATED	AS-BUILT		
		QUANTITIES	TYPE	MANUFACTURER/SUPPLIER
8" WATER MAIN	1184 L.F.	1184 L.F.	C54	GRIFFIN PIPE
6" WATER MAIN	8 L.F.	10 L.F.	C54	GRIFFIN PIPE
1 1/2" COPPER VMC		513	TYPE K	CAMBRIDGE LEE
8" 1/16 HD	2 EA.			
8"x8" TEE	3 EA.			
8"x6" FHT	2 EA.			
FIRE HYDRANT	2 EA.	2 EA.	C502/BB4	AMERICAN FLOW CONTROL
8" VALVE	2 EA.	4 EA.	GATE	AMERICAN FLOW CONTROL
6" VALVE	2 EA.	2 EA.	GATE	AMERICAN FLOW CONTROL
8" SEWER MAIN	850 L.F.	865	SDR 35	JM EAGLE/NORTH AMERICAN
8" SEWER MAIN (D.I.P.)	74 L.F.	79 L.F.	C 52	GRIFFIN PIPE
MANHOLES	7 EA.	7 EA.	PRE-CAST	ADS

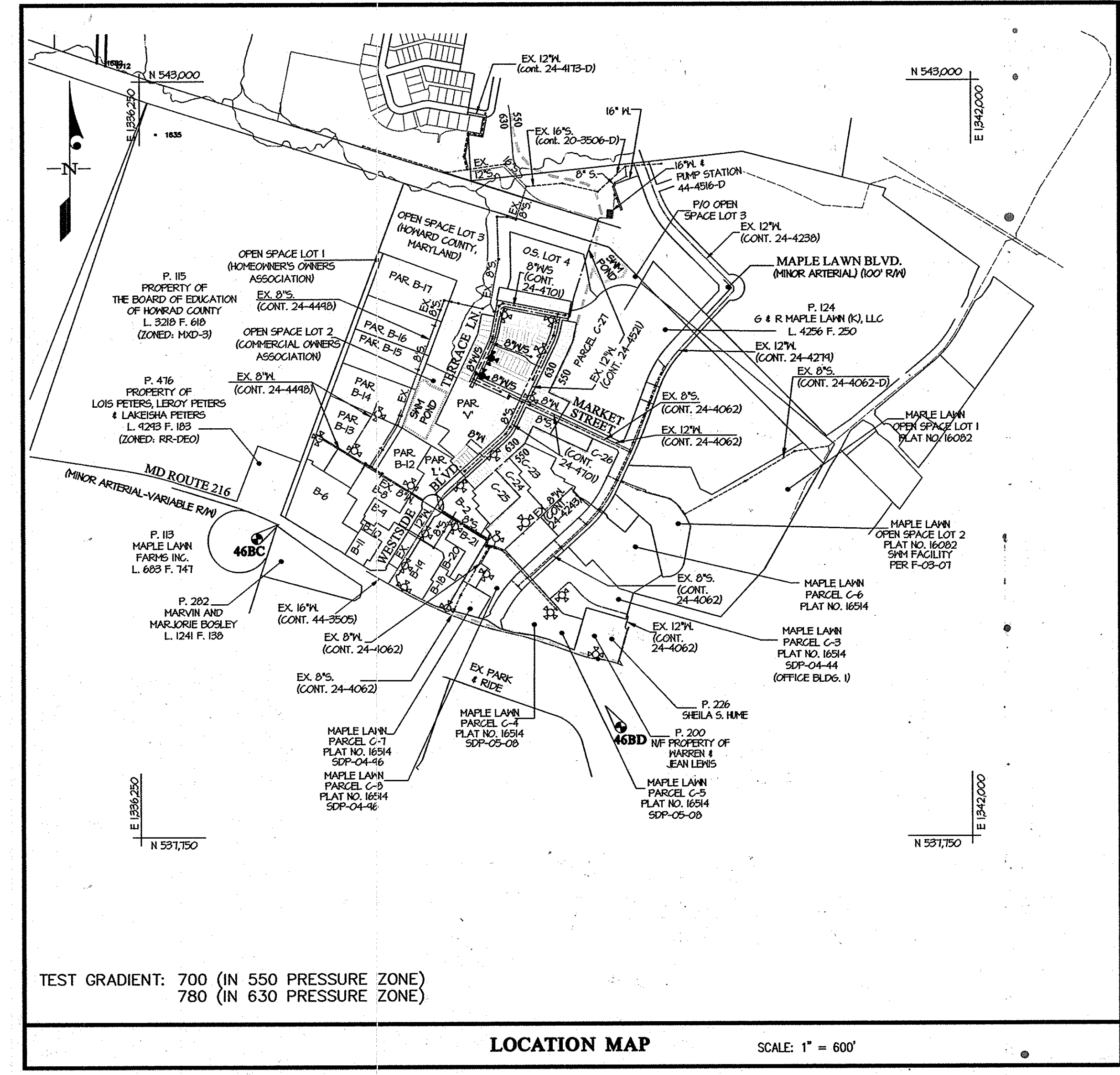
NAME OF UTILITY CONTRACTOR: \_\_\_\_\_

SURVEY AND CHECKBOX: AS-BUILT DATE: 6-24-13

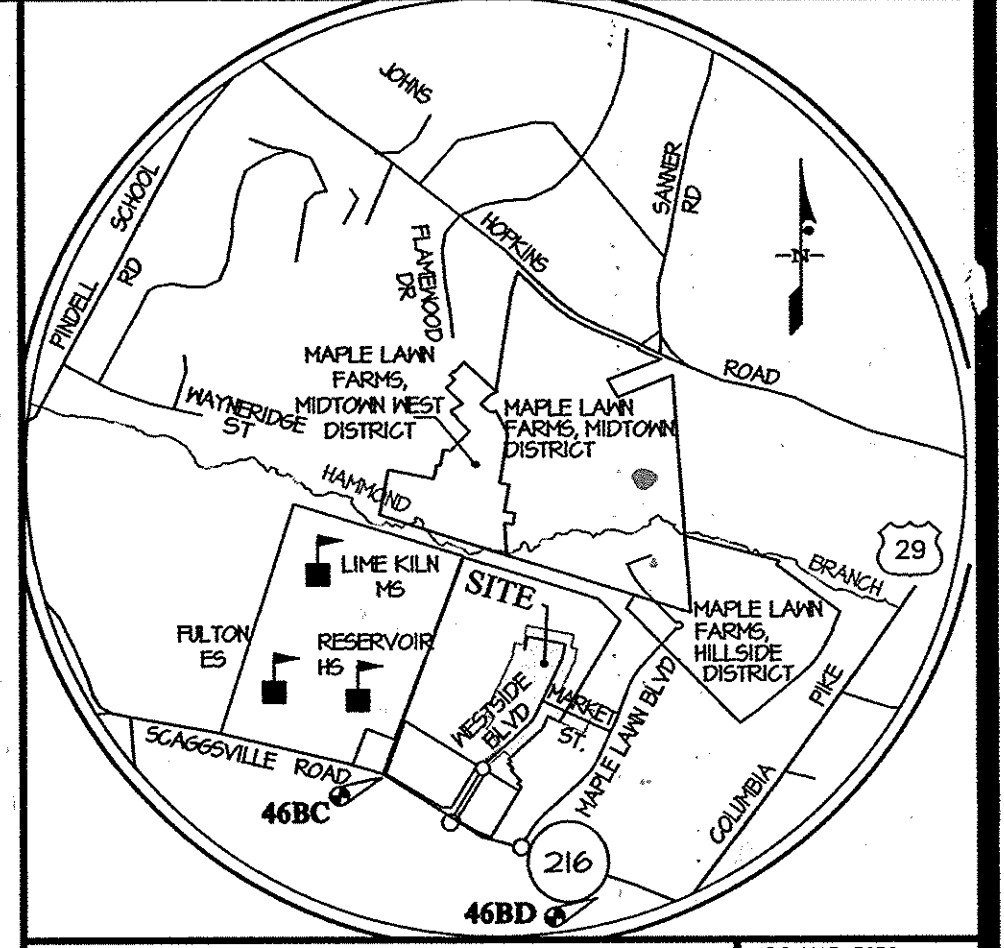


**SHEET INDEX**

- 1 WATER and SEWER TITLE SHEET
- 2 WATER and SEWER PLAN
- 3 WATER and SEWER PROFILES



TYPE OF BUILDING	RESIDENTIAL
NUMBER OF UNITS	43
NUMBER OF S.H.C.'s	30
NUMBER OF W.H.C.'s	2
AREA OF COMMERCIAL LOT/PARCEL	N/A
SEWER SHED	LITTLE PATUENT
PUMPING STATION	N/A



**BENCHMARKS**

46BC	ELEV. = 412.16	46BD	ELEV. = 431.7
N = 559425.13	E = 1331205.71	N = 530656.16	E = 1339446.55
STANDARD DISC ON CONCRETE MONUMENT		STANDARD DISC ON CONCRETE MONUMENT	

- GENERAL NOTES**
- PART I**
- APPROXIMATE LOCATIONS OF EXISTING MAINS ARE SHOWN. THE CONTRACTOR SHALL TAKE ALL NECESSARY PRECAUTIONS TO PROTECT EXISTING MAINS AND SERVICES AND MAINTAIN UNINTERRUPTED SERVICE. ANY DAMAGE INCURRED SHALL BE REPAIRED IMMEDIATELY TO THE SATISFACTION OF THE ENGINEER AT THE CONTRACTOR'S EXPENSE.
  - TOPOGRAPHIC FIELD SURVEYS WERE PERFORMED ON AUGUST 4, 2011 BY LEO H. RADEK.
  - HORIZONTAL AND VERTICAL SURVEY CONTROLS: THE COORDINATES SHOWN ON THE DRAWINGS ARE BASED ON MARYLAND STATE REFERENCE SYSTEM NAD 83/11 AS PROJECTED BY HOWARD COUNTY GEODETIC CONTROL STATIONS NO. 46BC AND NO. 46 BD. ALL VERTICAL CONTROLS ARE BASED ON NAVD83. VERTICAL CONTROLS PROVIDED ON THE DRAWINGS ARE STANDARD DISCS ON CONCRETE MONUMENTS.
  - ALL PIPE ELEVATIONS SHOWN ARE INVERT UNLESS OTHERWISE NOTED ON THE PLANS.
  - CLEAR ALL UTILITIES BY A MINIMUM OF 12 INCHES. CLEAR ALL POLES BY 5'-0" MINIMUM OR TOWER AS REQUIRED UNLESS OTHERWISE NOTED. THE OWNER HAS CONTACTED THE UTILITY COMPANIES AND HAS MADE ARRANGEMENTS FOR BRACING OF POLES AS SHOWN ON THE DRAWINGS. IN THE EVENT THE CONTRACTOR'S WORK REQUIRES THE BRACING OF ADDITIONAL POLES, ANY COST INCURRED BY THE OWNER FOR THE BRACING OF ADDITIONAL POLES OR DAMAGES SHALL BE DEDUCTED FROM MONIES OWED BY THE CONTRACTOR. THE CONTRACTOR SHALL COORDINATE WITH THE UTILITY COMPANIES TO SCHEDULE THE BRACING OF THE POLES.
  - FOR DETAILS NOT SHOWN ON THE DRAWINGS AND FOR MATERIALS AND CONSTRUCTION METHODS, USE HOWARD COUNTY DESIGN MANUAL, VOLUME IV, STANDARD SPECIFICATIONS AND DETAILS FOR CONSTRUCTION (LATEST EDITION). THE CONTRACTOR SHALL HAVE A COPY OF VOLUME IV ON THE JOB.
  - WHERE TEST FITS HAVE BEEN MADE ON EXISTING UTILITIES, THEY ARE NOTED BY THE SYMBOL (C) AT THE LOCATIONS OF THE TEST FITS. A NOTE OR NOTES CONTAINING THE RESULTS OF THE TEST FIT OR FITS IS INCLUDED ON THE DRAWINGS. EXISTING UTILITIES IN THE VICINITY OF THE PROPOSED WORK FOR WHICH TEST FITS HAVE NOT BEEN DUG SHALL BE LOCATED BY THE CONTRACTOR TWO WEEKS IN ADVANCE OF CONSTRUCTION OPERATIONS AT HIS OWN EXPENSE.
  - THE CONTRACTOR SHALL NOTIFY THE FOLLOWING UTILITY COMPANIES OR AGENCIES AT LEAST FIVE WORKING DAYS BEFORE STARTING WORK SHOWN ON THESE PLANS:
    - AT & T 1-800-252-1133
    - CONTRACTOR SERVICES 410-657-8113
    - BGE (EMERGENCY) 410-685-0123
    - BUREAU OF UTILITIES 410-313-4900
    - COLONIAL PIPELINE COMPANY 410-785-3940
    - MSB UTILITY 1-800-251-7111
    - STATE HIGHWAY ADMINISTRATION 410-531-5533
    - VERIZON 1-800-743-0033/410-224-4210
  - TREES AND SHRUBS ARE TO BE PROTECTED FROM DAMAGE TO THE MAXIMUM EXTENT. TREES AND SHRUBS LOCATED WITHIN THE CONSTRUCTION STRIP ARE NOT TO BE REMOVED OR DAMAGED BY THE CONTRACTOR.
  - THE CONTRACTOR SHALL REMOVE TREES, STUMPS, AND ROOTS ALONG THE LINE OF EXCAVATION. PAYMENT FOR SUCH REMOVAL SHALL BE INCLUDED IN THE UNIT PRICE BID FOR CONSTRUCTION OF THE MAIN.
  - THE CONTRACTOR SHALL NOTIFY THE BUREAU OF HIGHWAYS, HOWARD COUNTY, AT (410)218-7450 AT LEAST FIVE WORKING DAYS BEFORE OPEN CUTTING OR BORING/JACKING OF ANY COUNTY ROAD FOR LAYING WATER/SEWER MAINS OR HOUSE CONNECTIONS. THE APPROVAL OF THESE DRAWINGS WILL CONSTITUTE COMPLIANCE WITH DPM REQUIREMENTS PER SECTION 18.14(A) OF THE HOWARD COUNTY CODE.
- PART II WATER**
- ALL WATER MAINS TO BE D.I.P. CLASS 54 UNLESS OTHERWISE NOTED.
  - TOPS OF ALL WATER MAINS TO HAVE A MINIMUM OF 3'-6" OF COVER UNLESS OTHERWISE NOTED.
  - 3" VALVES ADJACENT TO TEES SHALL BE STRAPPED TO TEES.
  - ALL FITTINGS SHALL BE BUTTRESSED OR ANCHORED WITH CONCRETE IN ACCORDANCE WITH THE STANDARD DETAILS UNLESS OTHERWISE PROVIDED FOR ON THE DRAWINGS.
  - FIRE HYDRANTS SHALL BE SET TO THE BURY LINE ELEVATIONS SHOWN ON THE DRAWINGS. ALL FIRE HYDRANTS SHALL BE INSTALLED IN ACCORDANCE WITH THE STANDARD DETAILS. THE SOIL AROUND THE FIRE HYDRANT SHALL BE COMPACTED IN ACCORDANCE WITH SECTION 1000 AND 1005 OF THE STANDARD SPECIFICATIONS.
  - THE CONTRACTOR SHALL NOT OPERATE ANY WATER MAIN VALVES ON THE EXISTING WATER SYSTEM.
  - TRACER WIRE AND CONTINUITY TEST STATIONS SHALL BE INSTALLED ON ALL DIP AND PVC WATER MAINS IN ACCORDANCE WITH THE HOWARD COUNTY DESIGN MANUAL.
  - FOR PVC WATER MAINS, ALL RECORDS FOR THE QUALITY CONTROL AND QUALIFICATION TEST REQUIREMENTS NOTED IN SECTION 51 OF ANHA STANDARD C400 FOR PVC PRESSURE PIPE SHALL BE SUBMITTED WITH THE PIPE MATERIAL CERTIFICATIONS OR SHOP DRAWINGS PRIOR TO APPROVAL OF THE MATERIAL FOR USE. THE TEST RECORDS SHALL BE FOR THE PIPE TO BE INSTALLED UNDER THIS CONTRACT. ALL PVC PIPE SHALL CONTAIN MARKINGS TO ALLOW CROSS REFERENCING OF THE PIPE SUPPLIED TO THE TEST RECORDS RECEIVED.
  - UNLESS OTHERWISE NOTED ON THE PLANS OR IN THE SPECIFICATIONS, SEVENTEEN (17) POUND SACRIFICIAL ANODES SHALL BE INSTALLED ON ALL VALVES AND METALLIC FITTINGS USED WITH PVC WATER MAINS IN ACCORDANCE WITH VOLUME IV, STANDARD SPECIFICATIONS AND DETAILS FOR CONSTRUCTION. MAGNESIUM ANODES SHALL BE INSTALLED ON ALL VALVES AND DUCTILE IRON FITTINGS INCLUDING RESTRAINTS AND HARNESSES. ZINC ANODES SHALL BE INSTALLED ON ALL STAINLESS STEEL FITTINGS AND SADDLES USED WITH PVC MAINS. ALL TEES USED WITH PVC MAINS SHALL BE DUCTILE IRON.
- PART III**
- ALL SEWER MAINS SHALL BE DIP OR PVC UNLESS OTHERWISE NOTED.
  - ALL MANHOLES SHALL BE 4' - 0" INSIDE DIAMETER UNLESS OTHERWISE NOTED.
  - FORCE MAINS SHALL BE D.I.P. ONLY.
  - MANHOLES SHOWN WITH 2" AND 16" HALLS ARE FOR BRICK MANHOLES ONLY.
  - MANHOLES DESIGNATED M.T. IN PLAN AND PROFILE SHALL HAVE WATER-TIGHT FRAME AND COVERS, STANDARD DETAIL 6552. WHERE WATER-TIGHT FRAMES AND COVERS ARE USED, SET TOP OF FRAME 1' - 6" ABOVE FINISHED GRADE UNLESS OTHERWISE NOTED ON THE DRAWINGS.
  - HOUSES WITH THE SYMBOL (C.A.S.) INDICATES THAT CELLAR CANNOT BE SERVED.

CONTRACT No. 24-4749-D  
**MAPLE LAWN FARMS**  
 WESTSIDE DISTRICT - AREA 3  
 LOTS 72 thru 114, OPEN SPACE LOT 115  
 COMMON OPEN AREA LOTS 116 and 117  
 and NON-BUILDABLE BULK PARCEL 'V'  
 HOWARD COUNTY, MARYLAND  
 DEPARTMENT OF PUBLIC WORKS

SEDIMENT CONTROL MEASURES WILL BE IMPLEMENTED IN ACCORDANCE WITH SECTION 308 OF THE SPECIFICATIONS AND WITH ROAD DRAWINGS F-13-003; FOR SEDIMENT AND EROSION CONTROL.

REVIEWED FOR HOWARD SOIL CONSERVATION DISTRICT AND MEETS TECHNICAL REQUIREMENT.

SIGNATURE: \_\_\_\_\_ DATE: \_\_\_\_\_

**U.S.D.A. NATURAL RESOURCES CONSERVATION SERVICE**

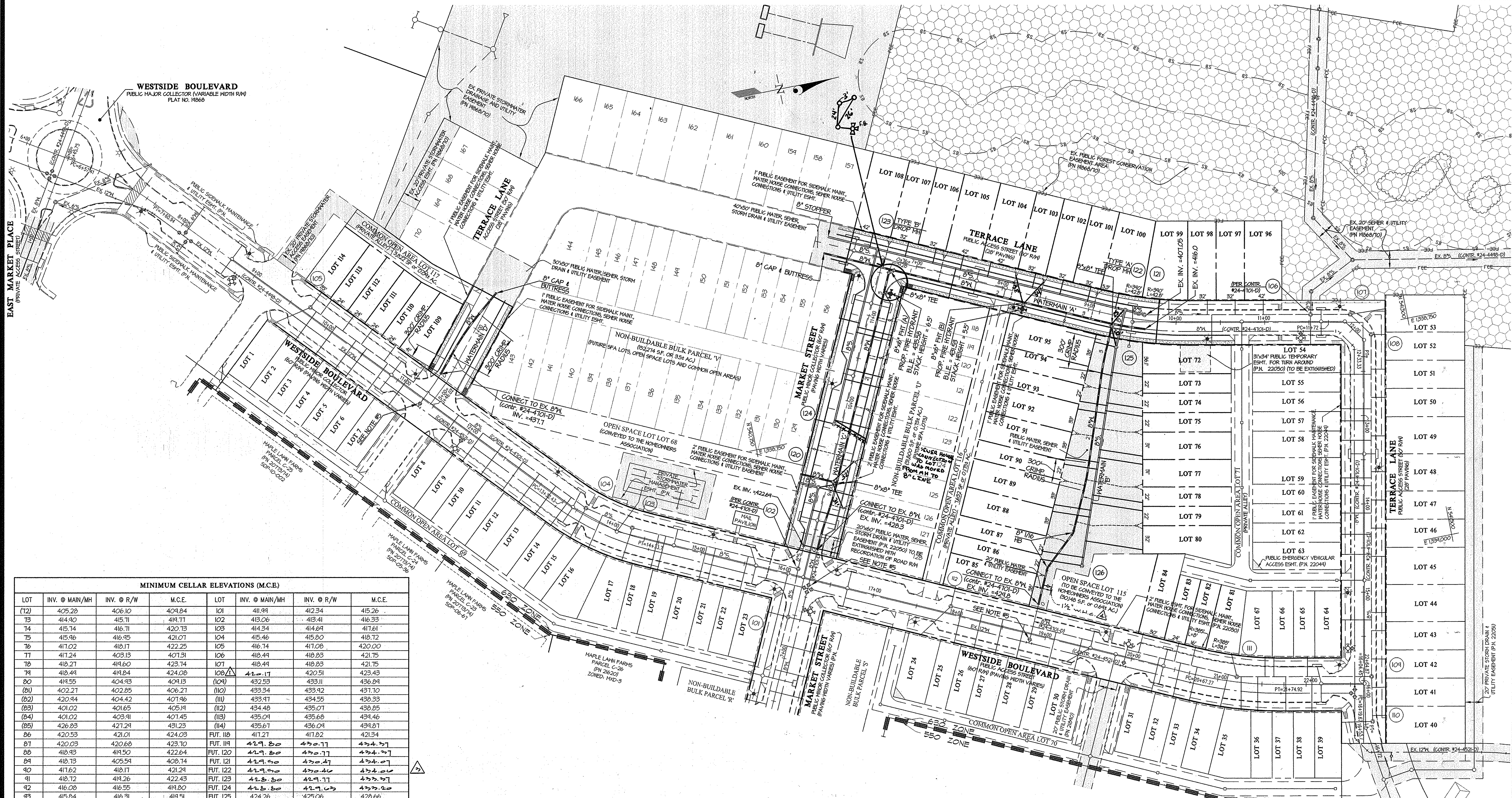
THIS DEVELOPMENT PLAN IS APPROVED FOR SOIL EROSION AND SEDIMENT CONTROL BY THE HOWARD SOIL CONSERVATION DISTRICT.

APPROVED: \_\_\_\_\_ DATE: 11/14/12

DEPARTMENT OF PUBLIC WORKS HOWARD COUNTY, MARYLAND DATE: 11/12	DEPARTMENT OF PLANNING AND ZONING HOWARD COUNTY, MARYLAND DATE: 11/12	<b>GLW GUTSCHICK LITTLE &amp; WEBER, P.A.</b> CIVIL ENGINEERS, LAND SURVEYORS, LAND PLANNERS, LANDSCAPE ARCHITECTS 3909 NATIONAL DRIVE - SUITE 250 - BURTONSVILLE OFFICE PARK BURTONSVILLE, MARYLAND 20886 TEL: 301-421-4024 BAL: 410-880-1820 DC/VA: 301-889-2524 FAX: 301-421-4186	<b>PROFESSIONAL CERTIFICATION</b> I HEREBY CERTIFY THAT THESE PLANS WERE PREPARED OR APPROVED BY ME, AND THAT I AM A DULY LICENSED PROFESSIONAL ENGINEER UNDER THE LAWS OF THE STATE OF MARYLAND, LICENSE NO. 12975 EXP. DATE: MAY 26, 2014 10-19-17	rev. number of wh's to reflect connection to open space lot 115. 01/19/13 As-BUILT 7-12-13	<b>WATER AND SEWER TITLE SHEET</b> 600' SCALE MAP NO. 46 . BLOCK NO. 4	<b>MAPLE LAWN FARMS</b> CONTRACT No. 24-4749-D WESTSIDE DISTRICT - AREA 3 LOTS 72 THRU 114, OPEN SPACE LOT 115, COMMON OPEN AREA LOTS 116 AND 117 AND NON-BUILDABLE BULK PARCEL 'V' HOWARD COUNTY, MARYLAND ELECTION DISTRICT No. 5	SCALE: AS SHOWN SHEET 1 OF 3
--	---	--	---	---	---	--	---------------------------------

PREPARED FOR:  
 MAPLE LAWN FARMS I, LLC  
 SUITE 300 WOODHOLME CENTER  
 1829 REISTERSTOWN ROAD  
 BALTIMORE, MD 21208  
 ATTN: MARK BENNETT  
 410-484-8400





MINIMUM CELLAR ELEVATIONS (M.C.E.)

LOT	INV. @ MAIN/MH	INV. @ R/W	M.C.E.	LOT	INV. @ MAIN/MH	INV. @ R/W	M.C.E.
(12)	405.28	406.10	404.84	101	411.94	412.34	415.26
13	414.90	415.71	414.71	102	413.06	413.41	416.33
14	415.74	416.71	420.13	103	414.34	414.64	417.61
15	415.96	416.95	421.07	104	415.46	415.80	418.72
16	417.02	418.17	422.25	105	416.74	417.08	420.00
17	417.24	420.13	421.31	106	418.44	418.83	421.75
18	418.27	419.60	423.74	107	418.44	418.83	421.75
19	418.44	419.84	424.08	108	420.17	420.51	423.43
20	419.55	420.43	424.13	(104)	432.53	433.11	436.84
(21)	420.27	420.85	426.27	(110)	433.34	433.92	437.10
(22)	420.44	420.42	421.46	(111)	433.47	434.55	438.33
(23)	420.02	420.65	425.15	(112)	434.48	435.07	438.85
(24)	420.02	420.91	427.45	(113)	435.04	435.68	434.46
(25)	426.83	427.24	431.23	(114)	435.67	436.04	434.87
26	420.53	421.01	424.03	FUT. 118	417.27	417.82	421.34
27	420.03	420.60	423.10	FUT. 119	429.80	430.11	434.37
28	418.43	419.50	422.64	FUT. 120	429.80	430.11	434.37
29	418.13	420.54	428.74	FUT. 121	429.80	430.11	434.37
30	417.62	418.17	421.24	FUT. 122	429.80	430.11	434.37
31	418.12	418.26	422.43	FUT. 123	428.80	429.17	433.37
32	416.08	416.55	419.80	FUT. 124	428.80	429.17	433.37
33	415.84	416.31	419.51	FUT. 125	424.26	425.06	428.66
34	415.34	415.74	419.01	FUT. 126	424.26	425.06	428.66
35	420.58	420.85	428.13	FUT. 127	423.60	424.40	428.00
36	420.86	420.21	427.13	FUT. 128	422.84	423.04	427.24
37	420.42	420.26	428.18	FUT. 129	428.80	429.94	433.37
38	420.40	420.74	428.66	FUT. 156	426.50	427.11	431.07
39	420.43	420.71	428.66				
40	410.70	411.05	413.97				

- NOTES:
- \* DENOTES SHC'S WHICH NEED TO BE RUN AT 1.0%. ALL OTHER SHC'S TO BE RUN AT 2.0%.
  - LOTS 115 THROUGH 117 ARE OPEN SPACE AND COMMON OPEN AREA LOTS.
  - ( ) DENOTES LOTS WHOSE CONNECTION HAS PROVIDED UNDER CONT. #24-4701-D. INFORMATION SHOWN WAS TAKEN FROM THAT PLAN SET.

- NOTES:
- ALL SHC'S SHOWN SERVING NUMBERED LOTS ARE 4".
  - ALL MANHOLES WILL BE STANDARD 4'-0" (6 5/2).
  - OUTSIDE METERS WILL BE PER HOWARD COUNTY DETAIL H 3.32 FOR THIN CONNECTIONS AND DETAIL N 3.28 FOR SINGLE CONNECTIONS.
  - ALL MHO'S SHOWN SERVING NUMBERED LOTS ARE 1/2".
  - EXISTING VALVE TO BE CLOSED TO CONNECT PROPOSED WATER MAIN.

SEWER MANHOLE INFORMATION

MH	LOCATION
120	N 540210 E 1338206
121	N 541204 E 1338607
122	N 541084 E 1338677
123	N 540221 E 1338554
124	N 540242 E 1338194
125	N 541711 E 1338111
126	N 541084 E 1338482

FITTING INFORMATION

WM. STATION	FITTING	LOCATION
0+76	8"X8" TEE	N 540330 E 1338580
2+32	8"X6" F.H. TEE (B)	N 541088 E 1338621
3+30	8"X8" TEE	N 541172 E 1338640
WATER MAIN 'B'		
0+48	8"X16" HB.	N 541045 E 1338446
0+41	8"X16" HB.	N 541082 E 1338413
WATER MAIN 'C'		
0+19	8"X8" TEE	N 540231 E 1338205
3+02	8"X6" F.H. TEE (A)	N 540421 E 1338604

DEPARTMENT OF PUBLIC WORKS  
HOWARD COUNTY, MARYLAND

*Signature*  
CHIEF, BUREAU OF UTILITIES

DEPARTMENT OF PLANNING AND ZONING  
HOWARD COUNTY, MARYLAND

*Signature*  
CHIEF, DEVELOPMENT ENGINEERING DIVISION

GLW GUTSCHICK LITTLE & WEBER, P.A.  
CIVIL ENGINEERS, LAND SURVEYORS, LAND PLANNERS, LANDSCAPE ARCHITECTS  
3909 NATIONAL DRIVE - SUITE 250 - BURTONSVILLE OFFICE PARK  
BURTONSVILLE, MARYLAND 20886  
TEL: 301-421-4024 BALT. 410-880-1020 DC/VA 301-969-2524 FAX 301-421-4185

DATE  
OCTOBER, 2012

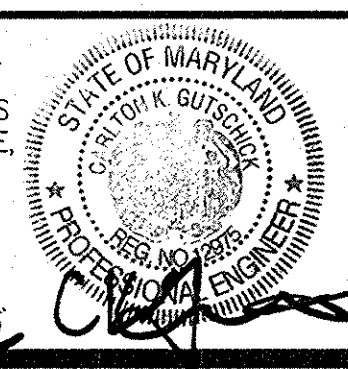
G.L.W. No.  
11002

PROFESSIONAL CERTIFICATION

I HEREBY CERTIFY THAT THESE PLANS WERE PREPARED OR APPROVED BY ME, AND THAT I AM A DULY LICENSED PROFESSIONAL ENGINEER UNDER THE LAWS OF THE STATE OF MARYLAND, LICENSE NO. 12375

EXP. DATE: MAY 26, 2014

*Signature*



BY	NO	REVISION	DATE
REV.	1	Rev. M.C.E. due to re-location of s.h.c. to lot 108. w/10/12	10-19-12
KCC	2	AS-BUILT	7-12-13
REV.	3	Rev. M.C.E. due to re-design to avoid 2.0%	10-27-13
REV.	4	Added valve to open space lot 115.	01-19-14

WATER & SEWER PLAN

600' SCALE MAP NO. 46 BLOCK NO. 4

MAPLE LAWN FARMS  
CONTRACT No. 24-4749-D  
WESTSIDE DISTRICT - AREA 3  
LOTS 72 THRU 114, OPEN SPACE LOT 115,  
COMMON OPEN AREA LOTS 116 AND 117  
AND NON-BUILDABLE BULK PARCEL 'V'

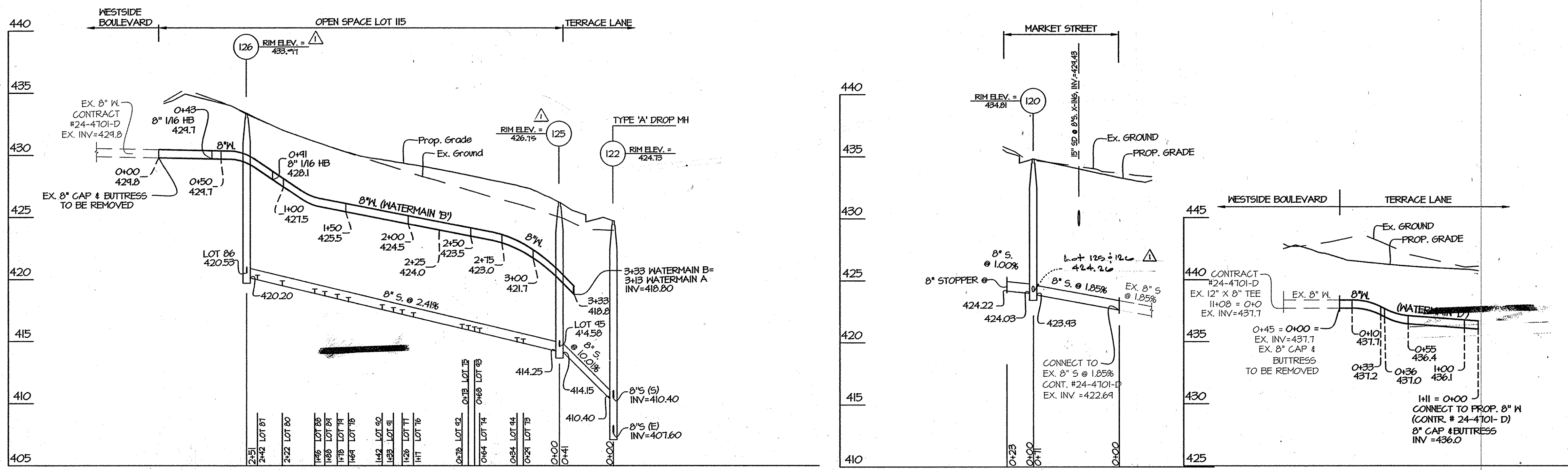
HOWARD COUNTY, MARYLAND  
ELECTION DISTRICT No. 5

SCALE  
1" = 50'

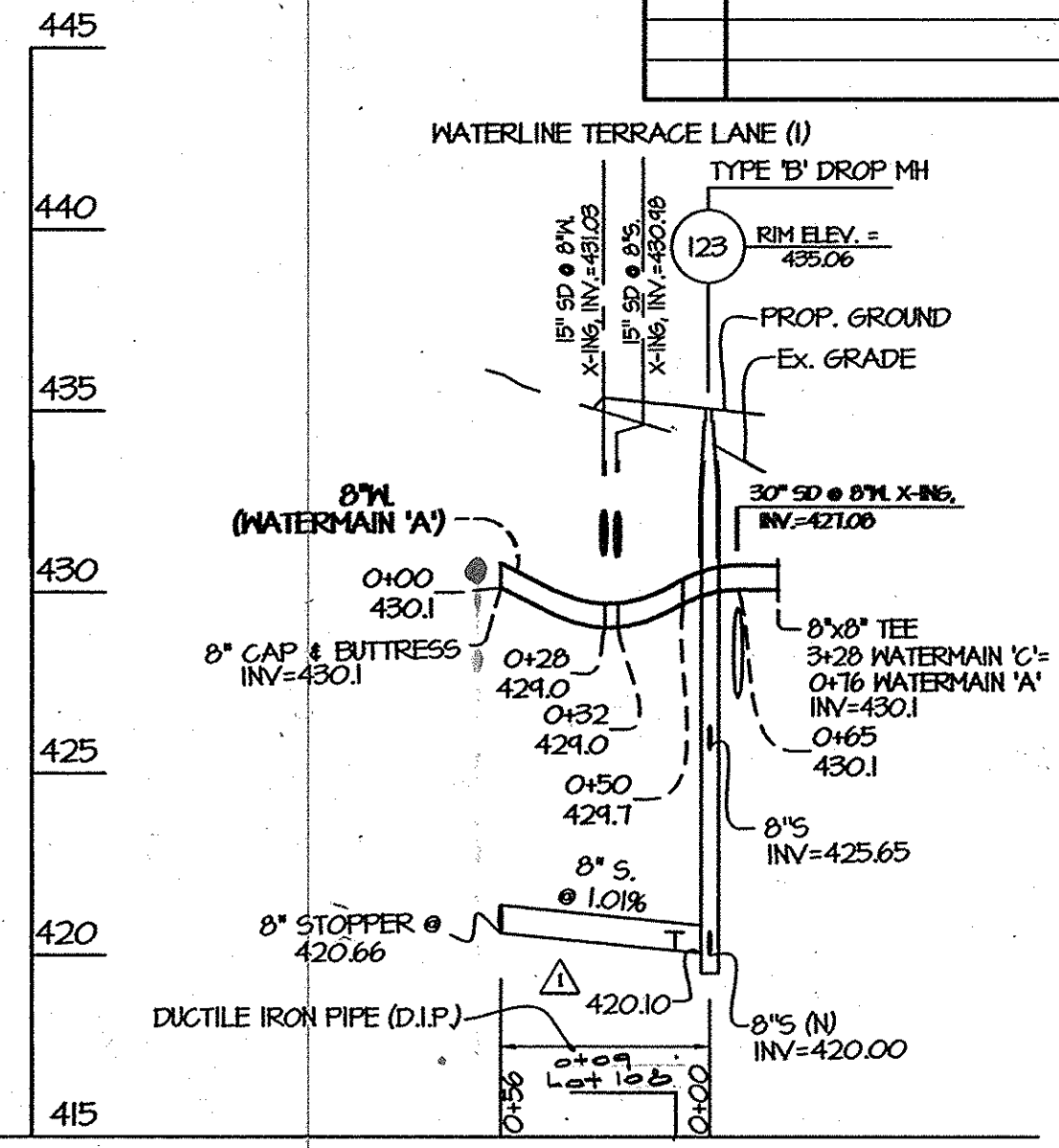
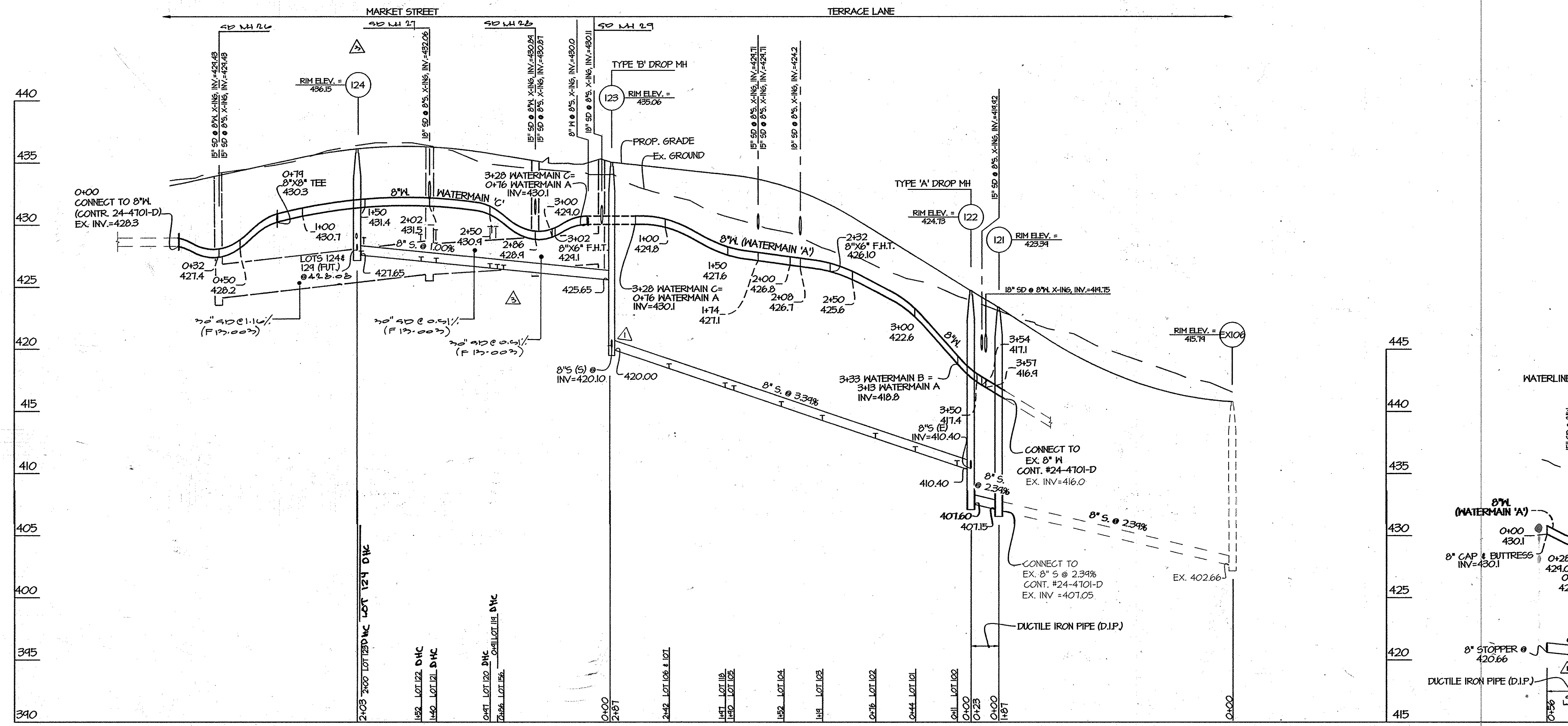
SHEET  
2 OF 3

PREPARED FOR:  
MAPLE LAWN FARMS I, LLC  
SUITE 300 WOODHOLME CENTER  
1829 REISTERSTOWN ROAD  
BALTIMORE, MD 21208  
ATTN: MARK BENNETT  
410-484-8400





AS-BUILT INFORMATION					
LOT #	ADDRESS	WATER HOUSE CONNECTION AS BUILT		SEWER HOUSE CONNECTION AS BUILT	
		LOCATION DIM. 1	LOCATION DIM. 2	LOCATION DIM. 1	LOCATION DIM. 2
72	TERRACE LANE				
73	TERRACE LANE	8' MAIN TO WM 39	SMH-125 TO WMC 91'	46' TO SMH 125	21' TO WM 73/74
74	TERRACE LANE		SMH-125 TO WMC 61'	23' TO WM 73/74	23' TO WM 75/76
75	TERRACE LANE		45	SMH-76 TO WMC 33'	29' TO WM 73/74
76	TERRACE LANE		45	SMH-76 TO WMC 29'	32' TO WM 75/76
77	TERRACE LANE		58	SMH-126 TO WMC 127'	40' TO WM 76/76
78	TERRACE LANE		59	SMH-126 TO WMC 106'	20' TO WM 77/78
79	TERRACE LANE		60	SMH-126 TO WMC 83'	28' TO WM 77/78
80	TERRACE LANE		66	SMH-126 TO WMC 78'	29' TO WM 79/80
81	WESTSIDE BLVD.				
82	WESTSIDE BLVD.				
83	WESTSIDE BLVD.				
84	WESTSIDE BLVD.				
85	WESTSIDE BLVD.	8' MAIN TO WM 4'	SMH-126 TO WMC 51'	SMH-126 TO WMC 51'	WESTSIDE BLVD.
86	WESTSIDE BLVD.		4'	SMH-126 TO WMC 51'	19' TO WM 85/86
87	WESTSIDE BLVD.		16'	SMH-126 TO WMC 51'	18' TO WM 87/88
88	WESTSIDE BLVD.		16'	SMH-126 TO WMC 51'	29' TO WM 89/90
89	WESTSIDE BLVD.		20'	SMH-91 TO WMC 25'	20' TO WM 87/88
90	WESTSIDE BLVD.		20'	SMH-91 TO WMC 25'	20' TO WM 89/90
91	WESTSIDE BLVD.		14'	SMH-91 TO WMC 27'	27' TO WM 89/90
92	WESTSIDE BLVD.		17'	SMH-91 TO WMC 33'	27' TO WM 91/92
93	WESTSIDE BLVD.		17'	SMH-126 TO WMC 60'	35' TO WM 91/92
94	WESTSIDE BLVD.		17'	SMH-126 TO WMC 57'	35' TO WM 93/94
95	WESTSIDE BLVD.		23'	SMH-126 TO WMC 75'	33' TO SMC 95
96	TERRACE LANE				
97	TERRACE LANE				
98	TERRACE LANE				
99	TERRACE LANE				
100	TERRACE LANE	8' MAIN TO WM 30	SMH-122 TO WMC 61'	22' TO WM 100/101	20' TO WM 122
102	TERRACE LANE		30	MH 26 TO WMC 48'	21' TO WM 102/103
103	TERRACE LANE		20	MH 26 TO WMC 45'	14' TO WM 102/103
104	TERRACE LANE		30	MH 26 TO WMC 27'	31' TO WM 102/103
105	TERRACE LANE		30	MH 26 TO WMC 14'	21' TO SMC 105
106	TERRACE LANE		30	MH 26 TO WMC 14'	21' TO SMC 109
107	TERRACE LANE		30	SMH-123 TO WMC 21'	22' TO WM 105/106
108	TERRACE LANE		20	SMH-123 TO WMC 20'	21' TO WM 107/108
109	WESTSIDE BLVD.				
110	WESTSIDE BLVD.				
111	WESTSIDE BLVD.				
112	WESTSIDE BLVD.				
113	WESTSIDE BLVD.				
114	WESTSIDE BLVD.				
118	MARKET STREET	8' MAIN TO WM 11'	MH 28 TO WMC 35'	47' TO WM 105/106	52' TO SMC 105
119	MARKET STREET		11'	MH 28 TO WMC 37'	19' TO WM 118/119
120	MARKET STREET		11'	MH 27 TO WMC 43'	23' TO WM 118/119
121	MARKET STREET		11'	MH 27 TO WMC 41'	25' TO WM 120/121
122	MARKET STREET		11'	MH 27 TO WMC 46'	26' TO WM 120/121
123	MARKET STREET		11'	MH 27 TO WMC 52'	42' TO WM 124
124	MARKET STREET		11'	SMH 120 TO WMC 61'	35' TO WM 122/123
125	MARKET STREET		12'	SMH 120 TO WMC 57'	20' TO SMC LOT 126
126	MARKET STREET		12'	MH 26 TO WMC 44'	20' TO SMC LOT 125
127	MARKET STREET		12'	MH 26 TO WMC 39'	40' TO SMC LOT 126
128	MARKET STREET		13'	MH 26 TO WMC 37'	40' TO SMC LOT 127
129	MARKET STREET		20'	SMH 124 TO WMC 47'	27' TO MH 124
156	MARKET STREET				58' TO WM 118/119
101	TERRACE LANE				11' TO WM 100/101



PREPARED FOR:  
 MAPLE LAWN FARMS I, LLC  
 SUITE 300 WOODHOLME CENTER  
 1829 REISTERSTOWN ROAD  
 BALTIMORE, MD 21208  
 ATTN: MARK BENNETT  
 410-484-8400

DEPARTMENT OF PUBLIC WORKS HOWARD COUNTY, MARYLAND 	DEPARTMENT OF PLANNING AND ZONING HOWARD COUNTY, MARYLAND 	<b>GLW</b> GUTSCHICK LITTLE & WEBER, P.A. CIVIL ENGINEERS, LAND SURVEYORS, LAND PLANNERS, LANDSCAPE ARCHITECTS 3909 NATIONAL DRIVE - SUITE 250 - BURTONTOWNE OFFICE PARK BURTONTOWNE, MARYLAND 20866 TEL: 301-421-4024 BALT: 410-880-1820 DC/VA: 301-989-2524 FAX: 301-421-4186	DATE OCTOBER, 2012	PROFESSIONAL CERTIFICATION I HEREBY CERTIFY THAT THESE PLANS WERE PREPARED OR APPROVED BY ME AND THAT I AM A DULY LICENSED PROFESSIONAL ENGINEER UNDER THE LAWS OF THE STATE OF MARYLAND. LICENSE NO. 12975 EXP. DATE: May 26, 2014 	REV. 1 rev. rim elev. for W1125+126, s/c for Lot 105 7/12/13	WATER & SEWER PROFILES 600' SCALE MAP NO. 46 BLOCK NO. 4	MAPLE LAWN FARMS CONTRACT No. 24-4749-D WESTSIDE DISTRICT - AREA 3 LOTS 72 THRU 114, OPEN SPACE LOT 115, COMMON OPEN AREA LOTS 116 AND 117 AND NON-BUILDABLE BULK PARCEL 'V' HOWARD COUNTY, MARYLAND ELECTION DISTRICT No. 5	SCALE AS SHOWN
			G.L.W. No. 11002		REV. 2 AS-BUILT			REV. 3 rev. s/c's to avoid storm drain 12-27-13