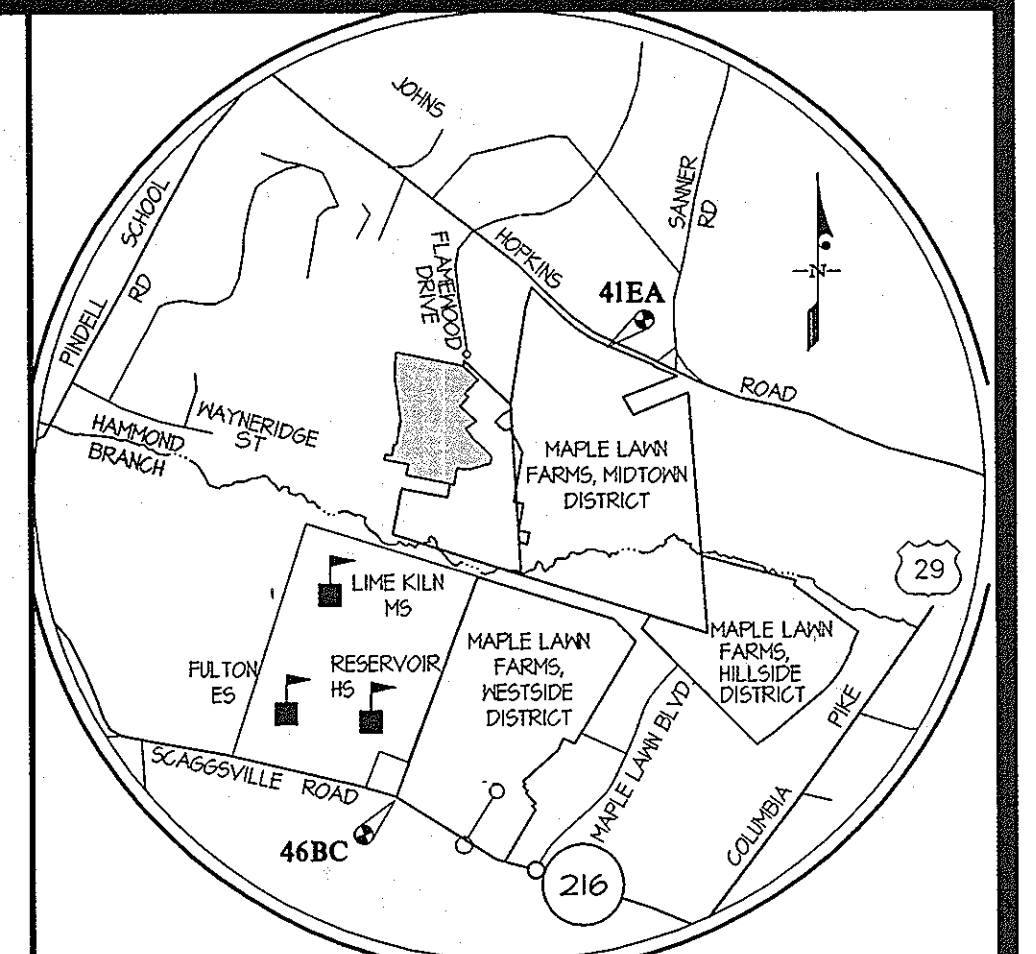


ITEMS	QUANTITIES ESTIMATED	QUANTITIES Δ		
		QUANTITIES	AS-BUILT	
			TYPE	MANUFACTURER/SUPPLIER
12" WATER MAIN (D.I.P.)	1040 L.F.	1,069 L.F.	WATER (DIP)	ATLANTIC STATES
8" WATER MAIN (D.I.P.)	2,991 L.F.	2,979 L.F.		ATLANTIC STATES
6" WATER MAIN (D.I.P.)	244 L.F.	286 L.F.		ATLANTIC STATES
1-1/2" HNC (COOPER)	2026 L.F.	1,952 L.F.	1 1/2" COPPER	MUELLER INDUSTRIES
12"x8" TEE	2 EA.	2 EA.	WATER FIT (DIP)	UNION FOUNDRY
12"x6" FHT	2 EA.	2 EA.		UNION FOUNDRY
12" CAP & BUTTRESS	1 EA.	1 EA.		UNION FOUNDRY
12" VALVE	2 EA.	2 EA.		AMERICAN FLOW CONTROL
8"x6" REDUCER	1 EA.	1 EA.	WATER FIT (DIP)	UNION FOUNDRY
8"x8" TEE	8 EA.	8 EA.		UNION FOUNDRY
8" 1/16 HD	4 EA.	4 EA.		UNION FOUNDRY
8" 1/32 HD	9 EA.	9 EA.		UNION FOUNDRY
8"x6" FHT	5 EA.	5 EA.		UNION FOUNDRY
8" VALVE	13 EA.	13 EA.		AMERICAN FLOW CONTROL
6" CAP & BUTTRESS	1 EA.	1 EA.	WATER FIT (DIP)	UNION FOUNDRY
6" VALVE	1 EA.	8 EA.		AMERICAN FLOW CONTROL
8" SEWER MAIN (P.V.C.)	2423 L.F.	2593 L.F.	SEWER (PVC)	
8" SEWER MAIN (D.I.P.)	1327 L.F.	1510 L.F.	SEWER (DIP)	ATLANTIC STATES
4" SHC (P.V.C.)	1790 L.F.	1230 L.F.	SHC (PVC)	MULTI FITTINGS
MANHOLES	27 EA.	27 EA.	SEWER MH'S	ATLANTIC CONCRETE
4" SEWER HOUSE CON. (D.I.P.)		736 L.F.	4" SHC (DIP)	ATLANTIC STATES
NAME OF UTILITY CONTRACTOR: GRAY & SON				

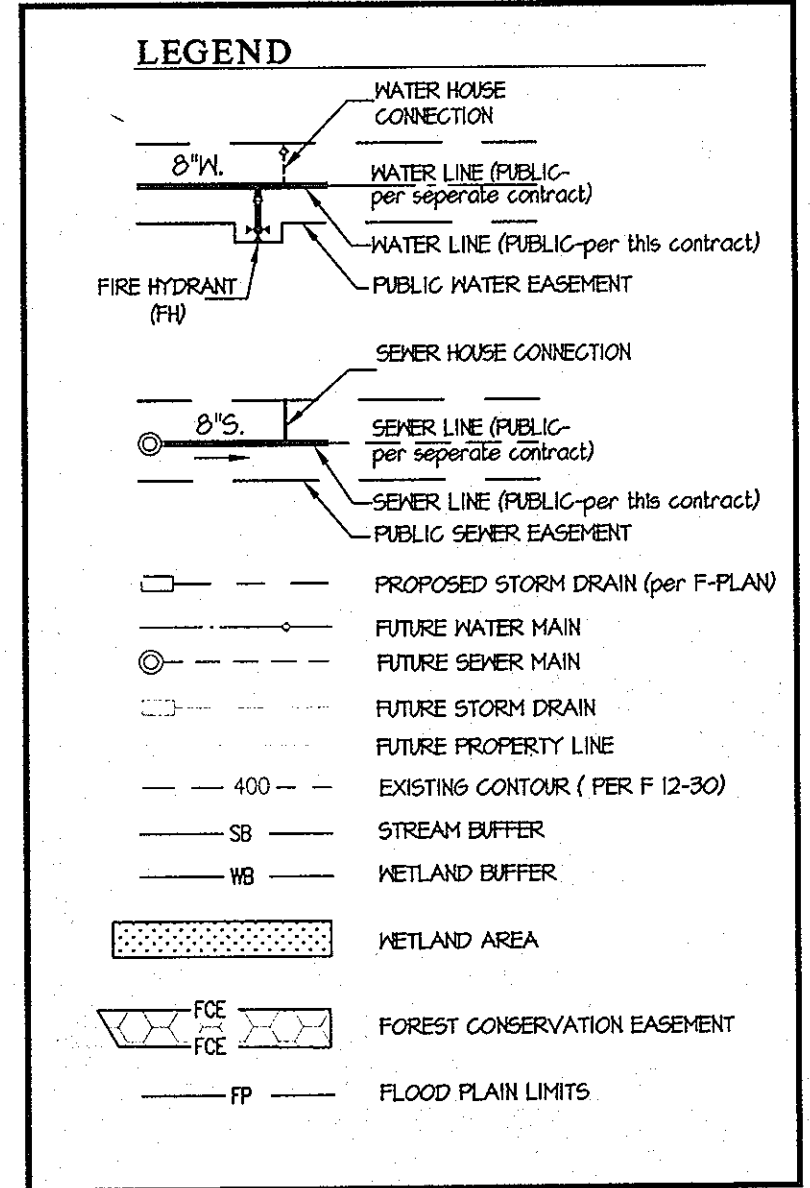
SURVEY AND DRAFTING DIV.	CHECKBOX:	AS-BUILT DATE:

TYPE OF BUILDING	RESIDENTIAL
NUMBER OF UNITS	85
NUMBER OF S.H.C.'S	75
NUMBER OF W.H.C.'S	76 (12 SINGLE, 2 DOUBLE)
AREA OF COMMERCIAL LOT/PARCEL	0.0 AC.
SEWER SHED	LITTLE PATIENT
PUMPING STATION	N/A

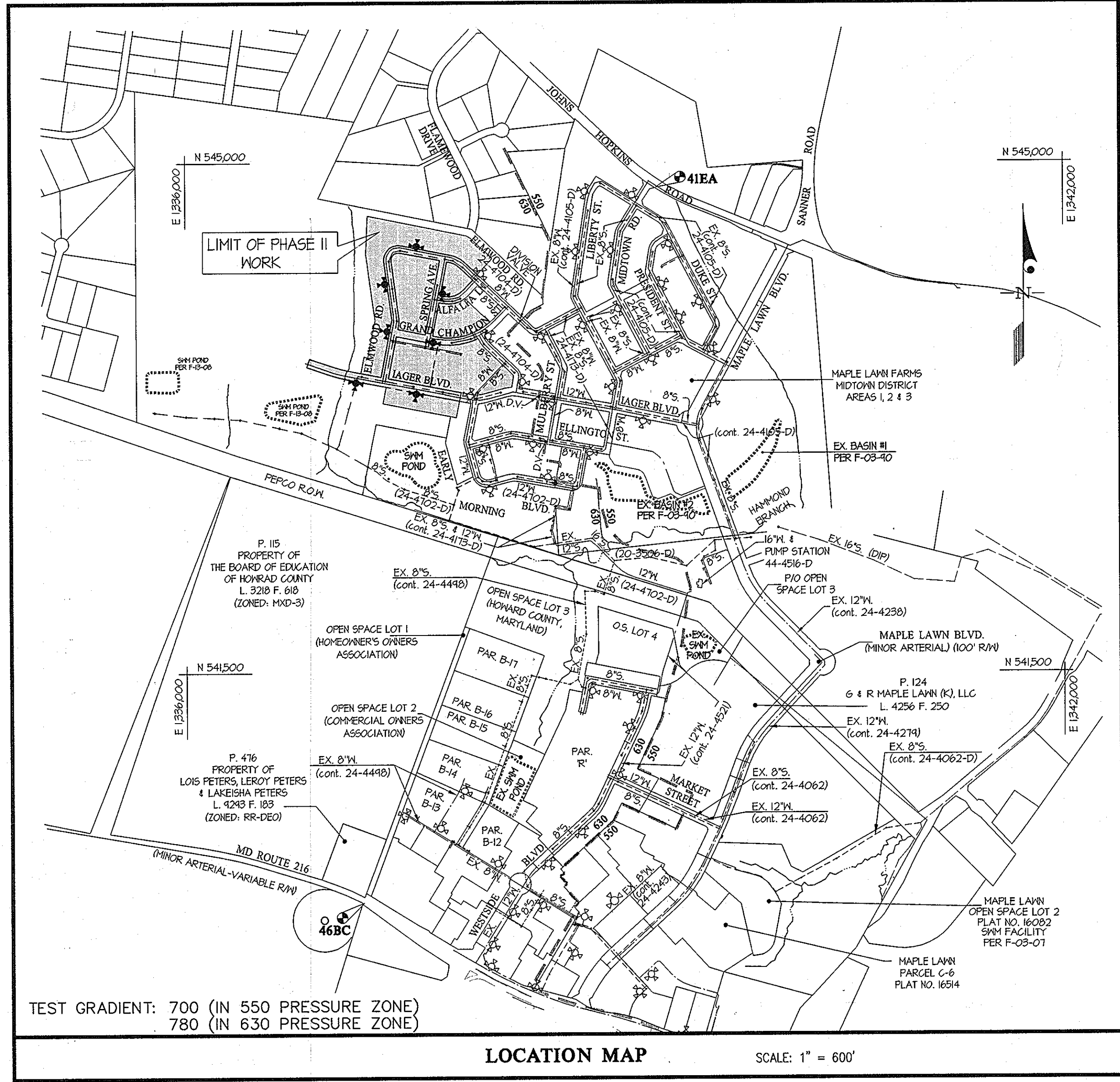
NOTE:
10 SHC'S AND 4 WHC'S WERE CONSTRUCTED UNDER CONT. #24-4704-D TO SERVE LOTS BEING CREATED UNDER F 13-007 AND SHOWN ON THIS CONTRACT.



VICINITY MAP SCALE: 1" = 2000'	
BENCHMARKS	41EA
46BC ELEV. = 472.16 N = 534.925.13 E = 1391.205.11 STANDARD DISC ON CONCRETE MONUMENT	41EA ELEV. = 401.25 N = 544.825.81 E = 1394.214.4 STANDARD DISC ON CONCRETE MONUMENT



SHEET INDEX	
1. WATER & SEWER TITLE SHEET	
2. WATER & SEWER PLAN	
3. WATER & SEWER PROFILE	
4. WATER & SEWER PROFILE	
5. WATER & SEWER PROFILE	
6. WATER & SEWER CHARTS and DETAILS	



- GENERAL NOTES**
- APPROXIMATE LOCATIONS OF EXISTING MAINS ARE SHOWN. THE CONTRACTOR SHALL TAKE ALL NECESSARY PRECAUTIONS TO PROTECT EXISTING MAINS AND SERVICES AND MAINTAIN UNINTERRUPTED SERVICE. ANY DAMAGE INCURRED SHALL BE REPAIRED IMMEDIATELY TO THE SATISFACTION OF THE ENGINEER AT THE CONTRACTOR'S EXPENSE.
 - TOPOGRAPHIC FIELD SURVEYS WERE PERFORMED ON MARCH 1981 BY SDI.
 - HORIZONTAL AND VERTICAL SURVEY CONTROLS: THE COORDINATES SHOWN ON THE DRAWINGS ARE BASED ON MARYLAND STATE REFERENCE SYSTEM NAD 83/11 AS PROJECTED BY HOWARD COUNTY GEODETIC CONTROL STATIONS NO. 46BC AND NO. 41EA. ALL VERTICAL CONTROLS ARE BASED ON NAVD83. VERTICAL CONTROLS PROVIDED ON THE DRAWINGS ARE STANDARD DISCS ON CONCRETE MONUMENTS.
 - ALL PIPE ELEVATIONS SHOWN ARE INVERT ELEVATIONS UNLESS OTHERWISE NOTED ON THE PLANS.
 - CLEAR ALL UTILITIES BY A MINIMUM OF 12 INCHES. CLEAR ALL POLES BY 3'-0" MINIMUM OR TUNNEL AS REQUIRED UNLESS OTHERWISE NOTED. HE OWNER HAS CONTACTED THE UTILITY COMPANIES AND HAS MADE ARRANGEMENTS FOR BRACING OF POLES AS SHOWN ON THE DRAWINGS. IN THE EVENT THE CONTRACTOR'S WORK REQUIRES THE BRACING OF ADDITIONAL POLES, ANY COST INCURRED BY THE OWNER FOR THE BRACING OF ADDITIONAL POLES OR DAMAGES SHALL BE DEDUCTED FROM MONIES OWED BY THE CONTRACTOR. THE CONTRACTOR SHALL COORDINATE WITH THE UTILITY COMPANIES TO SCHEDULE THE BRACING OF THE POLES.
 - FOR DETAILS NOT SHOWN ON THE DRAWINGS, AND FOR MATERIALS AND CONSTRUCTION METHODS, USE HOWARD COUNTY DESIGN MANUAL, VOLUME IV, STANDARD SPECIFICATIONS AND DETAILS FOR CONSTRUCTION (LATEST EDITION). THE CONTRACTOR SHALL HAVE A COPY OF VOLUME IV ON THE JOB.
 - WHERE TEST PITS HAVE BEEN MADE ON EXISTING UTILITIES, THEY ARE NOTED BY THE SYMBOL \odot AT THE LOCATIONS OF THE TEST PITS. A NOTE OR NOTES CONTAINING THE RESULTS OF THE TEST FIT OR FITS IS INCLUDED ON THE DRAWINGS. EXISTING UTILITIES IN THE VICINITY OF THE PROPOSED WORK FOR WHICH TEST PITS HAVE NOT BEEN DUG SHALL BE LOCATED BY THE CONTRACTOR TWO WEEKS IN ADVANCE OF CONSTRUCTION OPERATIONS AT HIS OWN EXPENSE.
 - THE CONTRACTOR SHALL NOTIFY THE FOLLOWING UTILITY COMPANIES OR AGENCIES AT LEAST FIVE WORKING DAYS BEFORE STARTING WORK SHOWN ON THESE PLANS:

AT & T	1-800-252-1133
BGE (CONTRACTOR SERVICES)	410-631-0113
BGE (EMERGENCY)	410-685-0023
BUREAU OF UTILITIES	410-313-4000
COLONIAL PIPELINE COMPANY	410-753-1310
MESS UTILITY	1-800-251-7777
STATE HIGHWAY ADMINISTRATION	410-531-5933
VERIZON	1-800-143-0033/410-224-4210
 - TREES AND SHRUBS ARE TO BE PROTECTED FROM DAMAGE TO THE MAXIMUM EXTENT. TREES AND SHRUBS LOCATED WITHIN THE CONSTRUCTION STRIP ARE NOT TO BE REMOVED OR DAMAGED BY THE CONTRACTOR.
 - THE CONTRACTOR SHALL REMOVE TREES, STUMPS, AND ROOTS ALONG THE LINE OF EXCAVATION PAYMENT FOR SUCH REMOVAL SHALL BE INCLUDED IN THE UNIT PRICE BID FOR CONSTRUCTION OF THE MAIN.
 - THE CONTRACTOR SHALL NOTIFY THE BUREAU OF HIGHWAYS, HOWARD COUNTY, AT (410)283-7450 AT LEAST FIVE WORKING DAYS BEFORE OPEN CUTTING OR BORING/JACKING OF ANY COUNTY ROAD FOR LAYING WATER/SEWER MAINS OR HOUSE CONNECTIONS. THE APPROVAL OF THESE DRAWINGS WILL CONSTITUTE COMPLIANCE WITH DPM REQUIREMENTS PER SECTION 1814(A) OF THE HOWARD COUNTY CODE.
- PART II WATER**
- ALL WATER MAINS TO BE D.I.P. CLASS 54 UNLESS OTHERWISE NOTED.
 - TOPS OF ALL WATER MAINS TO HAVE A MINIMUM OF 3'-6" OF COVER UNLESS OTHERWISE NOTED.
 - VALVES ADJACENT TO TREES SHALL BE STRAPPED TO TREES.
 - ALL FITTINGS SHALL BE BUSHED OR ANCHORED WITH CONCRETE IN ACCORDANCE WITH THE STANDARD DETAILS UNLESS OTHERWISE PROVIDED FOR ON THE DRAWINGS.
 - FIRE HYDRANTS SHALL BE SET TO THE BERRY LINE ELEVATIONS SHOWN ON THE DRAWINGS. ALL FIRE HYDRANTS SHALL BE INSTALLED IN ACCORDANCE WITH THE STANDARD DETAILS. THE SOIL AROUND THE FIRE HYDRANT SHALL BE COMPACTED IN ACCORDANCE WITH SECTION 1000 AND 1003 OF THE STANDARD SPECIFICATIONS.
 - THE CONTRACTOR SHALL NOT OPERATE ANY WATER MAIN VALVES ON THE EXISTING WATER SYSTEM.
 - TRACER WIRE AND CONTINUITY TEST STATIONS SHALL BE INSTALLED ON ALL DIP AND PVC WATER MAINS IN ACCORDANCE WITH THE HOWARD COUNTY DESIGN MANUAL.
 - FOR PVC WATER MAINS, ALL RECORDS FOR THE QUALITY CONTROL AND QUALIFICATION TEST REQUIREMENTS NOTED IN SECTION 51 OF ANNA STANDARD C800 FOR PVC PRESSURE PIPE SHALL BE SUBMITTED WITH THE PIPE MATERIAL, CERTIFICATIONS OR SHOP DRAWINGS PRIOR TO APPROVAL OF THE MATERIAL FOR USE. THE TEST RECORDS SHALL BE FOR THE PIPE TO BE INSTALLED UNDER THIS CONTRACT. ALL PVC PIPE SHALL CONTAIN MARKINGS TO ALLOW CROSS REFERENCES OF THE PIPE SUPPLIED TO THE TEST RECORDS RECEIVED.
 - UNLESS OTHERWISE NOTED ON THE PLANS OR IN THE SPECIFICATIONS, SEVENTEEN (17) POUND SACRIFICIAL ANODES SHALL BE INSTALLED ON ALL VALVES AND METALLIC FITTINGS USED WITH PVC WATER MAINS IN ACCORDANCE WITH VOLUME IV, STANDARD SPECIFICATIONS AND DETAILS FOR CONSTRUCTION. HANGERS AND ANODES SHALL BE INSTALLED ON ALL VALVES AND DUCTILE IRON FITTINGS INCLUDING RESTRAINTS AND HANGESSES. ZINC ANODES SHALL BE INSTALLED ON ALL STAINLESS STEEL FITTINGS AND SADDLES USED WITH PVC MAINS. ALL 'TEES' USED WITH PVC MAINS SHALL BE DUCTILE IRON.
 - SPRINKLER SYSTEMS FOR SINGLE RESIDENTIAL DWELLING UNITS SHALL HAVE WATER HOUSE CONNECTIONS AND WATER METERS THAT ARE SIZED IN ACCORDANCE WITH THE DESIGN OF SPRINKLER SYSTEMS. SPRINKLER SYSTEMS FOR SINGLE RESIDENTIAL DWELLINGS SHALL HAVE A MINIMUM OF 4-INCH SERVICE CONNECTION WITH A 1" OUTSIDE METER SETTING.
- PART III**
- ALL SEWER MAINS SHALL BE DIP OR P.V.C. UNLESS OTHERWISE NOTED.
 - ALL MANHOLES SHALL BE 4' - 0" INSIDE DIAMETER UNLESS OTHERWISE NOTED.
 - FORCE MAINS SHALL BE D.I.P. ONLY.
 - MANHOLES SHOWN WITH 12" AND 18" HALLS ARE FOR BRICK MANHOLES ONLY.
 - MANHOLES DESIGNATED INT. IN PLAN AND PROFILE SHALL HAVE WATER-TIGHT FRAME AND COVERS, STANDARD DETAIL 6552, WHERE WATER-TIGHT FRAMES AND COVERS ARE USED, SET TOP OF FRAME 1' - 0" ABOVE FINISHED GRADE UNLESS OTHERWISE NOTED ON THE DRAWINGS.
 - HOUSES WITH THE SYMBOL "H.S." INDICATES THAT CELLAR CANNOT BE SERVED.

CONTRACT No. 24-4747-D
MAPLE LAWN FARMS
 MIDTOWN WEST DISTRICT - AREA 2 (PHASE 2)
 LOTS 93 THROUGH 177, OPEN SPACE LOTS 178 THROUGH 183
 AND COMMON OPEN AREA LOTS 184 THROUGH 186

HOWARD COUNTY, MARYLAND
 DEPARTMENT OF PUBLIC WORKS

SEDIMENT CONTROL MEASURES WILL BE IMPLEMENTED IN ACCORDANCE WITH SECTION 308 OF THE SPECIFICATIONS AND WITH ROAD DRAWINGS F 13-007: FOR SEDIMENT AND EROSION CONTROL.

REVIEWED FOR HOWARD SOIL CONSERVATION DISTRICT AND MEETS TECHNICAL REQUIREMENT.

SIGNATURE DATE
 U.S.D.A. NATURAL RESOURCES CONSERVATION SERVICE

THIS DEVELOPMENT PLAN IS APPROVED FOR SOIL EROSION AND SEDIMENT CONTROL BY THE HOWARD SOIL CONSERVATION DISTRICT.
 APPROVED: John R. Robertson 12/6/12
 HOWARD S.C.D. DATE

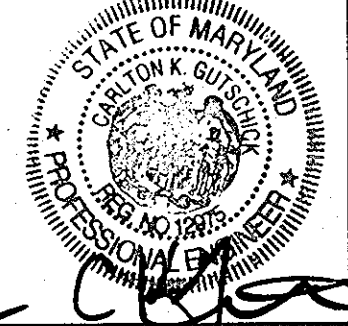
DEPARTMENT OF PUBLIC WORKS
 HOWARD COUNTY, MARYLAND

DEPARTMENT OF PLANNING AND ZONING
 HOWARD COUNTY, MARYLAND

GLW GUTSCHICK LITTLE & WEBER, P.A.
 CIVIL ENGINEERS, LAND SURVEYORS, LAND PLANNERS, LANDSCAPE ARCHITECTS
 3809 NATIONAL DRIVE - SUITE 250 - BIRTONSVILLE OFFICE PARK
 BIRTONSVILLE, MARYLAND 20865
 TEL: 301-421-4024 BAL: 410-880-1820 DC/VA: 301-989-2524 FAX: 301-421-4186

DATE
 OCTOBER, 2012
 G.L.W. No.
 11001

PROFESSIONAL CERTIFICATION
 I HEREBY CERTIFY THAT THESE PLANS WERE PREPARED OR APPROVED BY ME, AND THAT I AM A DULY LICENSED PROFESSIONAL ENGINEER UNDER THE LAWS OF THE STATE OF MARYLAND, LICENSE NO. 12875
 EXP. DATE: MAY 26, 2014
 11-7-12



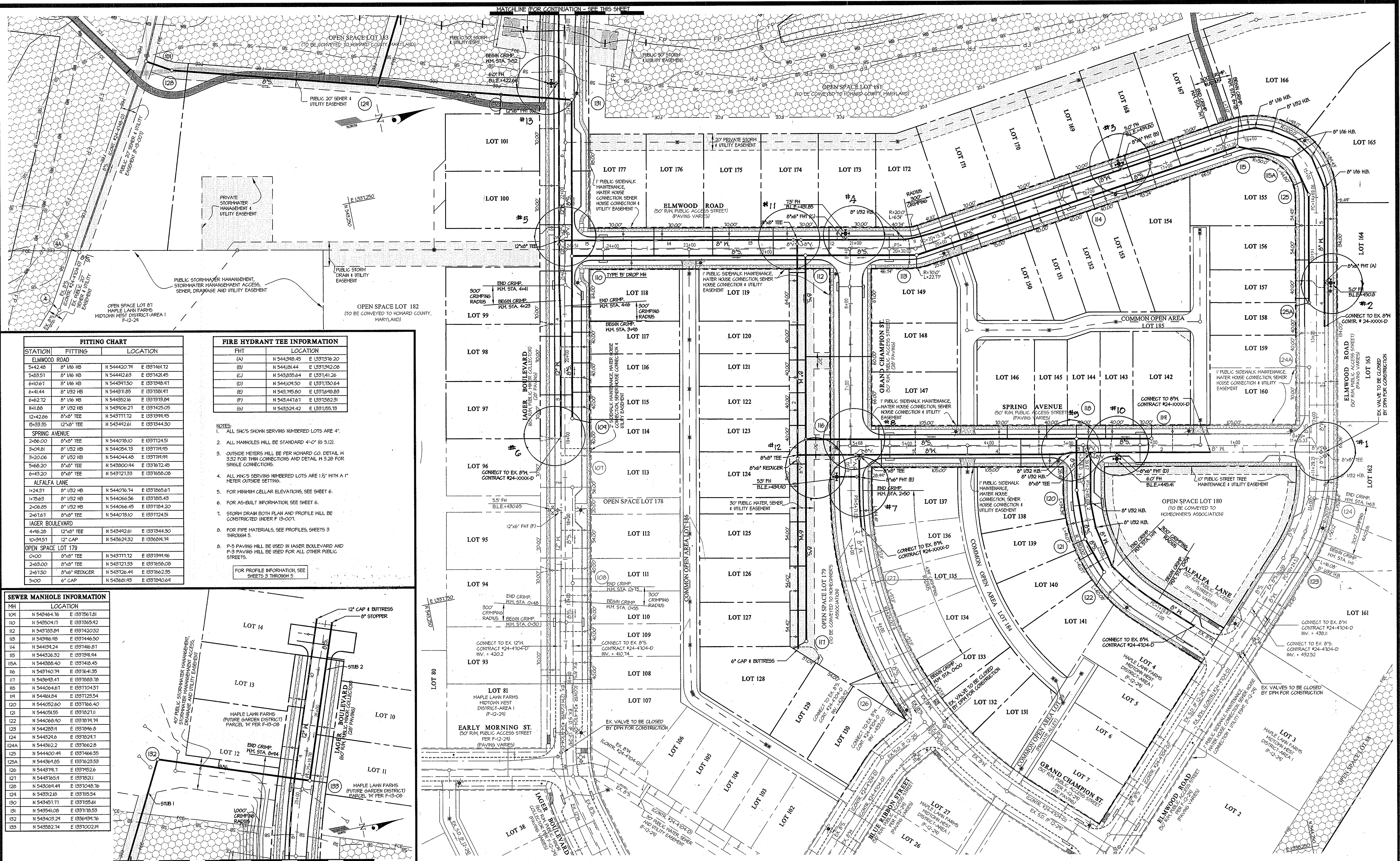
REV	DESCRIPTION	DATE
BY NO <td>REVISE QUANTITIES TO REFLECT 5' W EXTENSION; CONNECTIONS TO FUTURE LOTS. <td>11-11-13</td> </td>	REVISE QUANTITIES TO REFLECT 5' W EXTENSION; CONNECTIONS TO FUTURE LOTS. <td>11-11-13</td>	11-11-13

WATER and SEWER
 TITLE SHEET

MAPLE LAWN FARMS
 CONTRACT No. 24-4747-D
 MIDTOWN WEST DISTRICT - AREA 2 (PHASE 2)
 LOTS 93 - 177
 OPEN SPACE LOTS 178 - 183 AND
 COMMON OPEN AREA LOTS 184 - 186
 HOWARD COUNTY, MARYLAND
 ELECTION DISTRICT No. 5

SCALE
 AS SHOWN
 SHEET
 1 OF 6

PREPARED FOR:
 MAPLE LAWN FARMS I, LLC
 SUITE 300 WOODOLME CENTER
 1829 REISTERSTOWN ROAD
 BALTIMORE, MD 21208
 ATTN: MARK BENNETT
 410-484-8400



FITTING CHART

STATION	FITTING	LOCATION
ELMWOOD ROAD		
542.40	8" 1/2 HB	N 544420.71 E 1331461.72
543.57	8" 1/2 HB	N 544421.63 E 1331421.45
610.67	8" 1/2 HB	N 544391.50 E 1331398.47
641.44	8" 1/2 HB	N 544311.05 E 1331391.47
642.72	8" 1/2 HB	N 544352.16 E 1331379.04
1111.80	8" 1/2 HB	N 543906.27 E 1331425.05
1242.26	8" 1/2 TEE	N 543711.12 E 1331391.45
1533.35	12" 8" TEE	N 543442.61 E 1331344.30
SPRING AVENUE		
2486.00	8" 1/2 TEE	N 544078.10 E 1331724.51
3409.81	8" 1/2 HB	N 544054.75 E 1331714.95
3420.06	8" 1/2 HB	N 544044.48 E 1331714.94
5468.20	8" 1/2 TEE	N 543800.44 E 1331762.45
6443.20	8" 1/2 TEE	N 543721.33 E 1331765.00
ALFALFA LANE		
1124.37	8" 1/2 HB	N 544076.14 E 1331265.67
1175.63	8" 1/2 HB	N 544066.56 E 1331285.43
2406.85	8" 1/2 HB	N 544066.45 E 1331184.20
2467.67	8" 1/2 TEE	N 544078.10 E 1331124.51
JAGER BOULEVARD		
4446.28	12" 8" TEE	N 543442.61 E 1331344.30
10345.51	12" 8" TEE	N 543624.32 E 1336694.74
OPEN SPACE LOT 178		
0+00	8" 1/2 TEE	N 543711.12 E 1331391.46
2489.00	8" 1/2 TEE	N 543721.33 E 1331765.00
2467.50	8" 1/2 REDCR.	N 543726.44 E 1331762.35
5400	6" CAP	N 543624.32 E 1331761.64

FIRE HYDRANT TEE INFORMATION

FHT	LOCATION
(A)	N 544398.45 E 1331576.20
(B)	N 544181.44 E 1331342.00
(C)	N 543835.64 E 1331411.26
(D)	N 544104.50 E 1331730.64
(E)	N 543745.80 E 1331748.83
(F)	N 543441.61 E 1331582.31
(G)	N 543524.42 E 1331555.73

- NOTES:
- ALL SHCS SHOWN SERVING NUMBERED LOTS ARE 4".
 - ALL MANHOLES WILL BE STANDARD 4'-0" (6 5/2).
 - OUTSIDE METERS WILL BE PER HOWARD CO. DETAIL N 3.32 FOR TWIN CONNECTIONS AND DETAIL N 3.20 FOR SINGLE CONNECTIONS.
 - ALL 1/2" SCS SERVING NUMBERED LOTS ARE 1/2" WITH A 1" METER OUTSIDE SETTINGS.
 - FOR MINIMUM CELLAR ELEVATIONS, SEE SHEET 6.
 - FOR AS-BUILT INFORMATION, SEE SHEET 6.
 - STORM DRAIN BOTH PLAN AND PROFILE WILL BE CONSTRUCTED UNDER F 13-007.
 - FOR PIPE MATERIALS, SEE PROFILES, SHEETS 3 THROUGH 5.
 - P-5 PAVING WILL BE USED IN JAGER BOULEVARD AND P-3 PAVING WILL BE USED FOR ALL OTHER PUBLIC STREETS.

FOR PROFILE INFORMATION SEE SHEETS 3 THROUGH 5

SEWER MANHOLE INFORMATION

MH	LOCATION
104	N 543464.16 E 1331567.81
110	N 543504.17 E 1331365.82
112	N 543789.84 E 1331420.52
113	N 543916.98 E 1331446.50
114	N 544194.24 E 1331416.67
115	N 544326.32 E 1331391.94
115A	N 544388.40 E 1331418.45
116	N 543740.74 E 1331641.33
117	N 543613.47 E 1331883.78
118	N 544054.67 E 1331704.57
119	N 544181.44 E 1331723.54
120	N 544052.80 E 1331766.40
121	N 544051.55 E 1331822.11
122	N 544068.40 E 1331794.74
123	N 544283.94 E 1331246.28
124	N 544324.66 E 1331824.71
124A	N 544362.24 E 1331762.25
125	N 544400.44 E 1331766.55
125A	N 544364.85 E 1331762.53
126	N 544371.17 E 1331752.26
127	N 544376.94 E 1331702.11
128	N 543064.44 E 1331048.76
129	N 543921.28 E 1331105.54
130	N 543491.77 E 1331555.61
131	N 543541.08 E 1331718.53
132	N 543403.24 E 1336494.76
133	N 543582.74 E 1331022.14

DEPARTMENT OF PUBLIC WORKS
HOWARD COUNTY, MARYLAND
Steve C. Gern
CHIEF, BUREAU OF UTILITIES

DEPARTMENT OF PLANNING AND ZONING
HOWARD COUNTY, MARYLAND
John J. Chubb
CHIEF, DEVELOPMENT ENGINEERING DIVISION

GLWGUTSCHICK LITTLE & WEBER, P.A.
CIVIL ENGINEERS, LAND SURVEYORS, LAND PLANNERS, LANDSCAPE ARCHITECTS
3909 NATIONAL DRIVE - SUITE 250 - BURTONSVILLE OFFICE PARK
BURTONSVILLE, MARYLAND 20886
TEL: 301-421-4024 BALT: 410-889-1820 DC/VA: 301-989-2524 FAX: 301-421-4186

DATE OCT., 2012
G.L.W. No. 11001

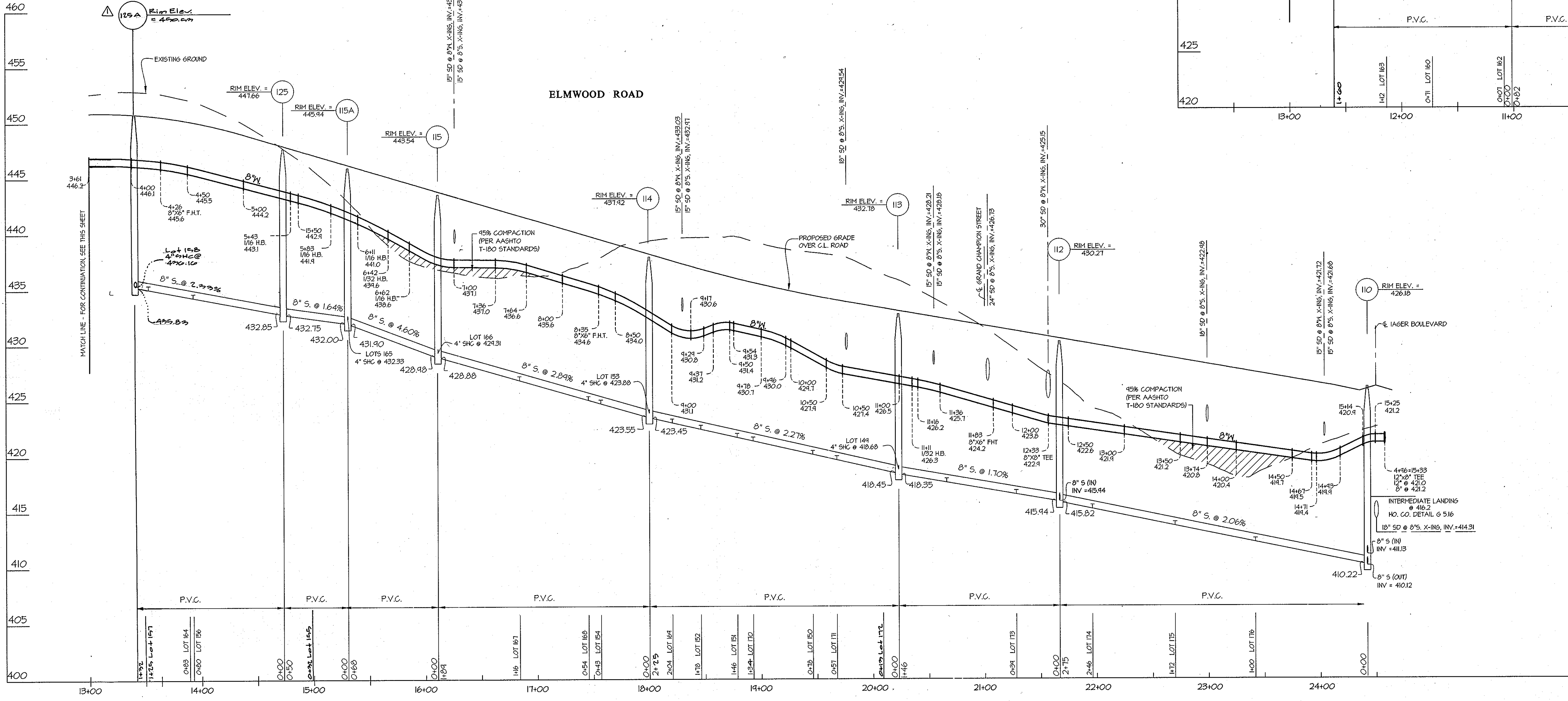
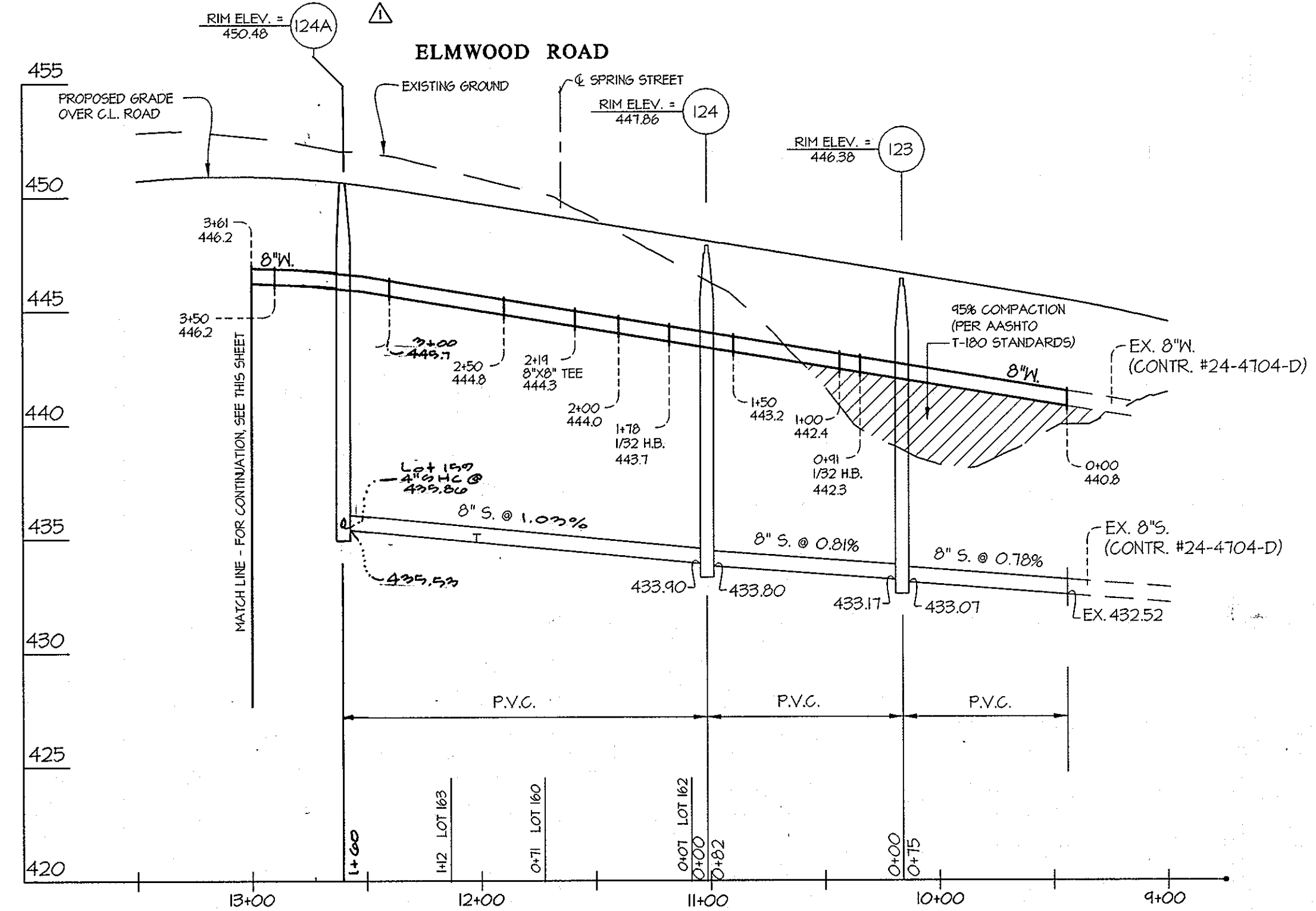
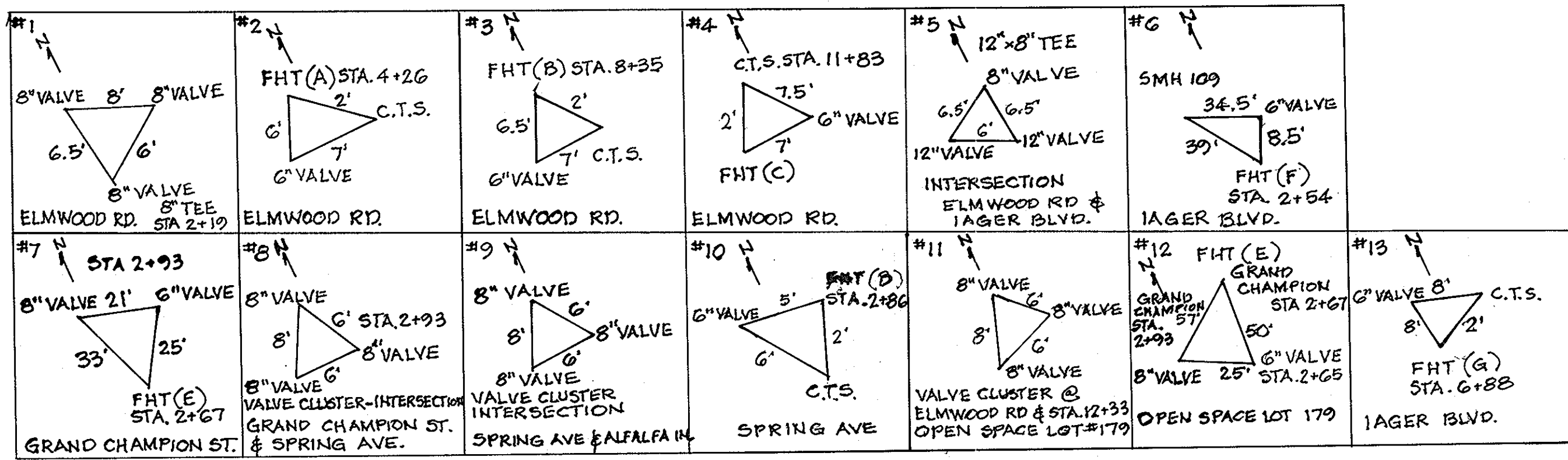
PROFESSIONAL CERTIFICATION
I HEREBY CERTIFY THAT THESE PLANS WERE PREPARED OR APPROVED BY ME, AND THAT I AM A DULY LICENSED PROFESSIONAL ENGINEER UNDER THE LAWS OF THE STATE OF MARYLAND, LICENSE NO. 12275
EXP. DATE: MAY 26, 2014
11-14-13

WATER and SEWER PLAN
600' SCALE MAP NO. 41
BLOCK NO. 14815

MAPLE LAWN FARMS
CONTRACT NO. 24-4747-D
MIDTOWN WEST DISTRICT - AREA 2 (PHASE 3)
LOTS 97-101, LOTS 114-133, LOTS 137-158, LOTS 164-177
OPEN SPACE LOTS 179 - 183
COMMON OPEN AREA LOTS 184 - 186
HOWARD COUNTY, MARYLAND
ELECTION DISTRICT NO. 5

SCALE 1" = 50'
SHEET 2 OF 6

L:\2012\PROJECTS\HOWARD\HOWARD\AREA 2\PHASE 3\PLAN NEW\CONTRACT.dwg, SHEET 2 OF 6, PLOTTED 11/18/2013 1:52 PM, PLOTTED BY: Diana Vande Ryt



L:\CAD\DRAWINGS\11001\EA\BIBS\MS (EXHIBIT FOR MAURIS)\11001-MS-PROFILES(REV).dwg
 PLOTTED: 11/17/2012 8:28 AM, LAST SAVED: 11/17/2012 3:44 PM, PLOTTED BY: Jennifer R. Dick

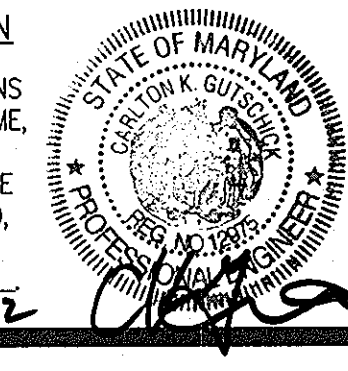
DEPARTMENT OF PUBLIC WORKS
 HOWARD COUNTY, MARYLAND
 Chief, Bureau of Utilities
 Date: 12/14/12

DEPARTMENT OF PLANNING AND ZONING
 HOWARD COUNTY, MARYLAND
 Chief, Development Engineering Division
 Date: 12/14/12

GLW GUTSCHICK LITTLE & WEBER, P.A.
 CIVIL ENGINEERS, LAND SURVEYORS, LAND PLANNERS, LANDSCAPE ARCHITECTS
 3909 NATIONAL DRIVE - SUITE 250 - BURTONSVILLE OFFICE PARK
 BURTONSVILLE, MARYLAND 20866
 TEL: 301-421-4024 BALT: 410-880-1820 DC/VA: 301-989-2524 FAX: 301-421-4186

DATE: OCTOBER, 2012
 G.L.W. No. 11001

PROFESSIONAL CERTIFICATION
 I HEREBY CERTIFY THAT THESE PLANS WERE PREPARED OR APPROVED BY ME, AND THAT I AM A DULY LICENSED PROFESSIONAL ENGINEER UNDER THE LAWS OF THE STATE OF MARYLAND, LICENSE NO. 12975
 EXP. DATE: MAY 26, 2014

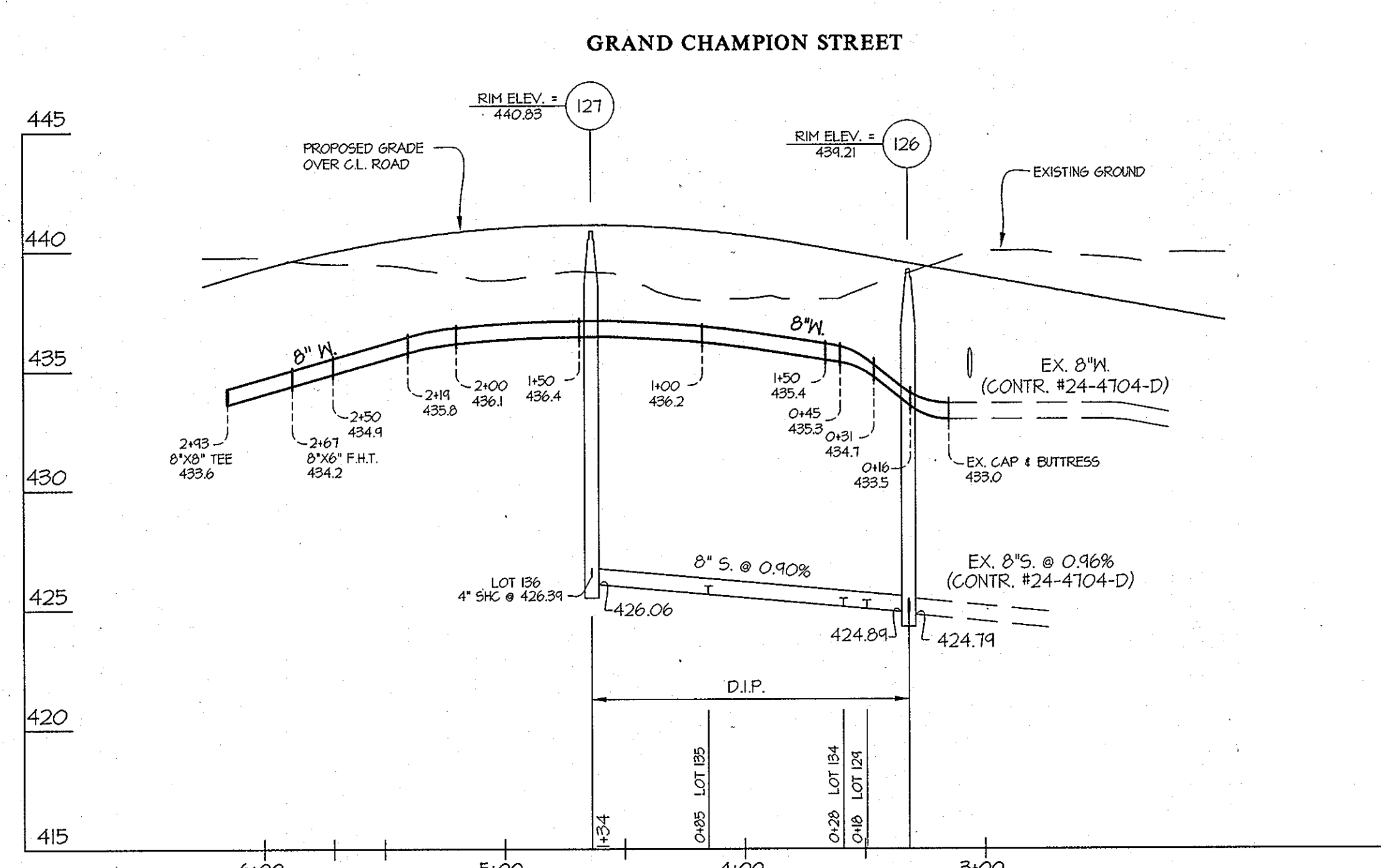
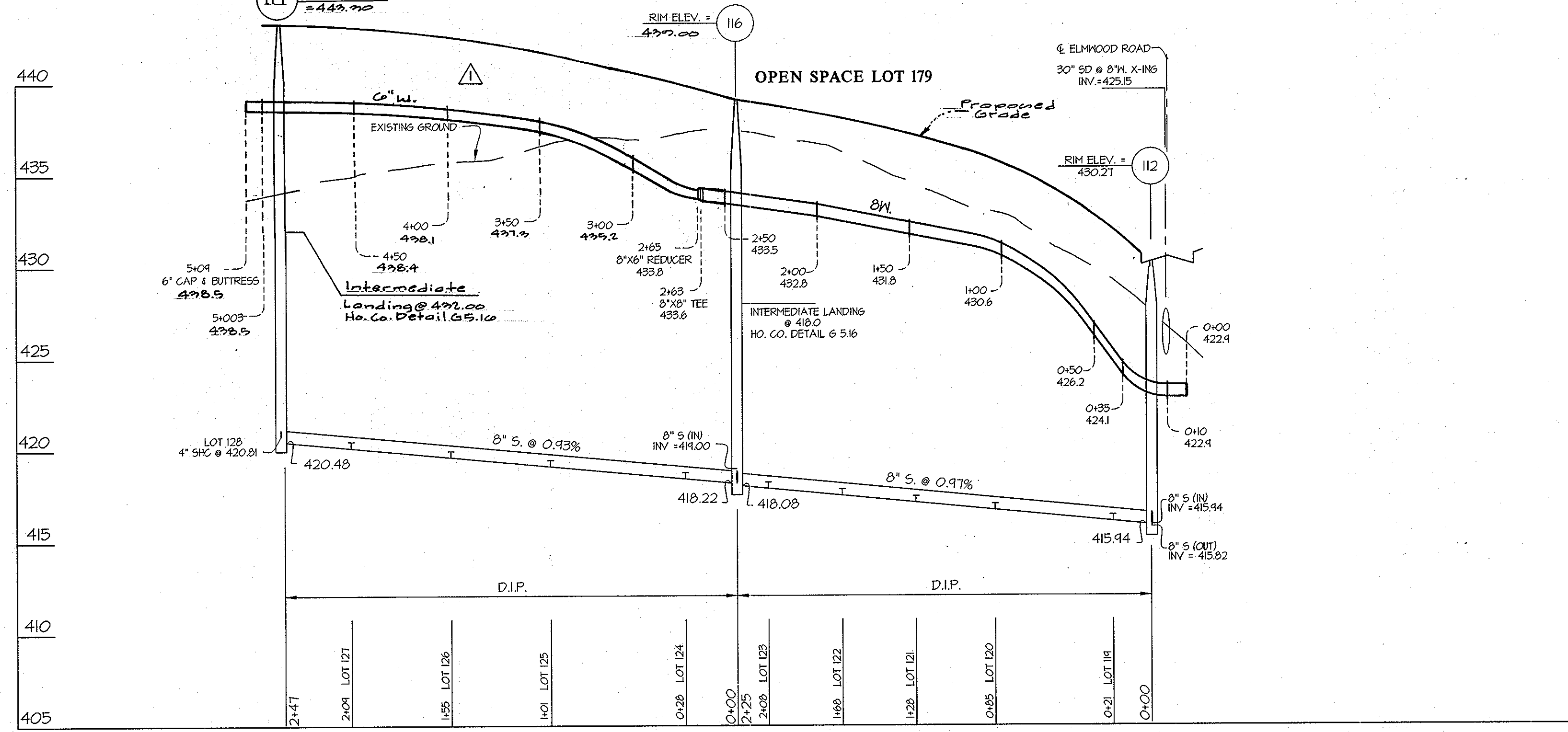
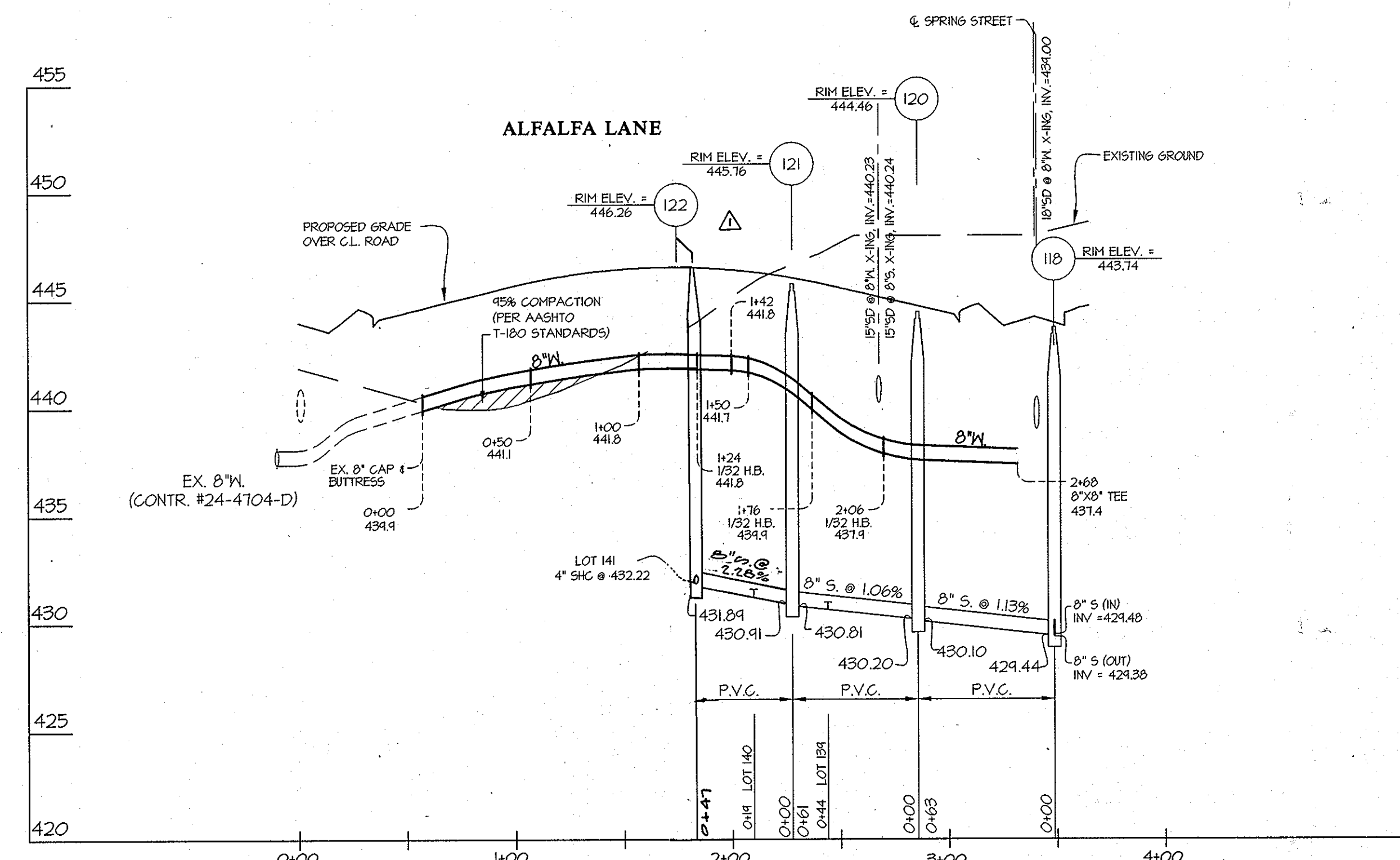
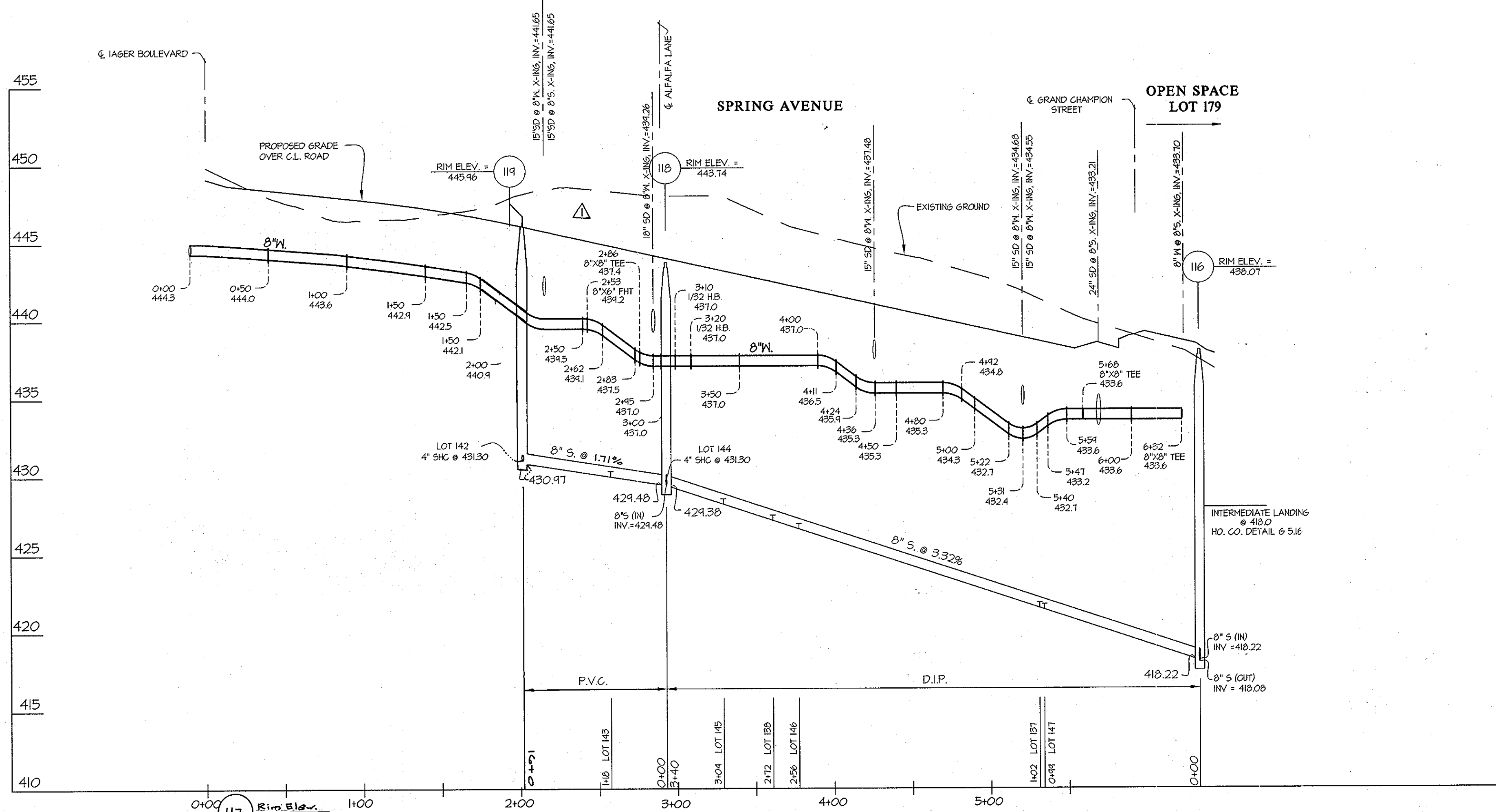


REV	BY	NO	REVISION	DATE
1			REV. 8'S TO ACCOUNT FOR DRIVEWAYS.	11-11-12

WATER AND SEWER PROFILES
 600' SCALE MAP NO. 41 BLOCK NO. 14&15

MAPLE LAWN FARMS
 CONTRACT No. 24-4747-D
 MDTOWN WEST DISTRICT - AREA 2 (PHASE 2)
 LOTS 93 - 177
 OPEN SPACE LOTS 178 - 183 AND COMMON OPEN AREA LOTS 184 - 186
 HOWARD COUNTY, MARYLAND
 ELECTION DISTRICT No. 5

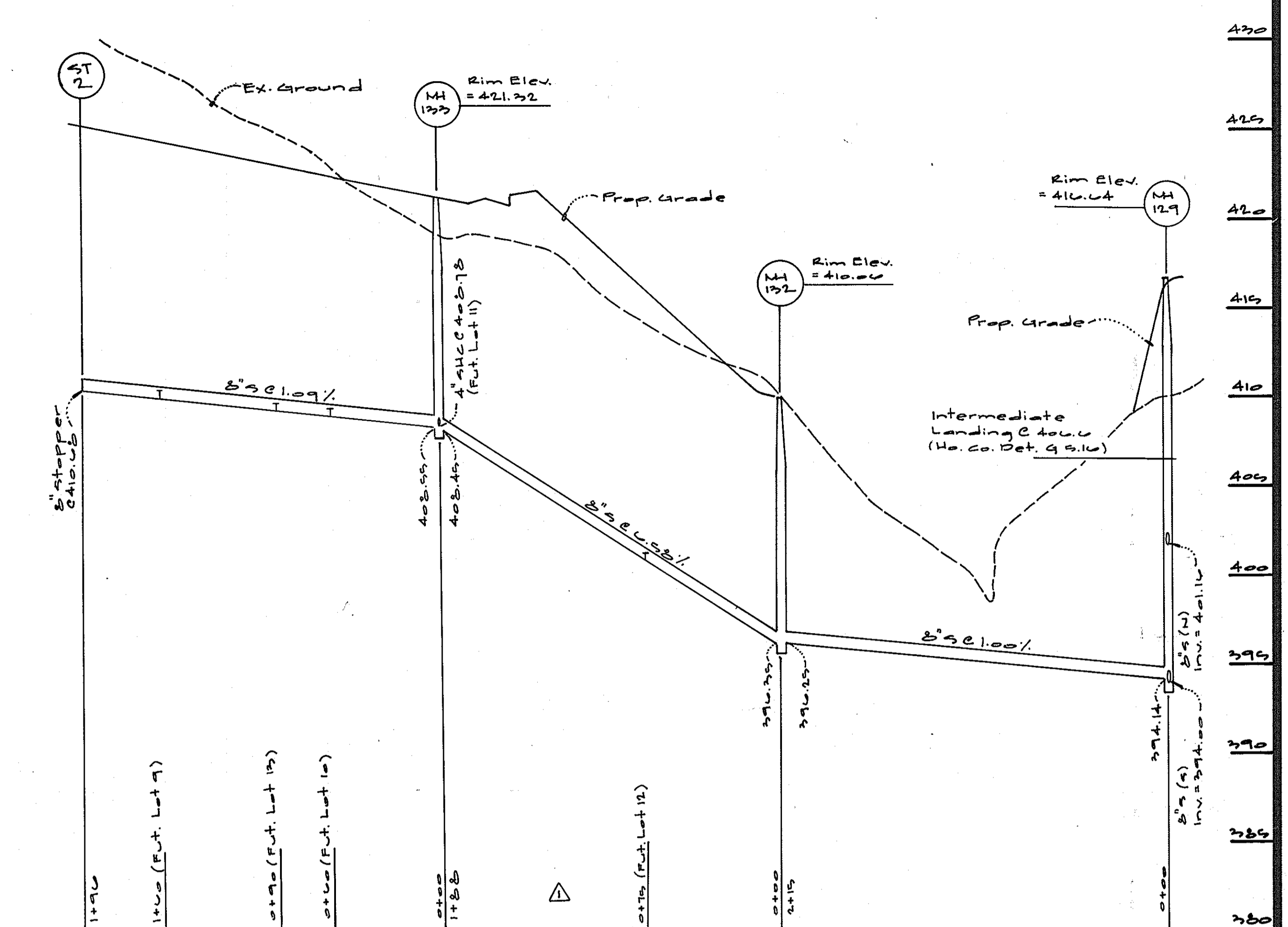
SCALE AS SHOWN
 SHEET 3 OF 6



L:\CADD\DRAWINGS\11001\11001-MS-PROFILES\REV1.dwg
 PLOTTED: 11/7/2012 8:29 AM, LAST SAVED: 11/7/2012 8:28 AM, PLOTTED BY: Jennifer R. Dick

DEPARTMENT OF PUBLIC WORKS HOWARD COUNTY, MARYLAND <i>Silva Chen</i> CHIEF, BUREAU OF UTILITIES	DEPARTMENT OF PLANNING AND ZONING HOWARD COUNTY, MARYLAND <i>Michael...</i> CHIEF, DEVELOPMENT ENGINEERING DIVISION	GLW Gutschick Little & Weber, P.A. CIVIL ENGINEERS, LAND SURVEYORS, LAND PLANNERS, LANDSCAPE ARCHITECTS 3909 NATIONAL DRIVE - SUITE 250 - BURTOWNVILLE OFFICE PARK BURTOWNVILLE, MARYLAND 20866 TEL: 301-421-4024 FAX: 410-880-1820 DC/VA: 301-989-2524 FAX: 301-421-4186	DATE OCTOBER, 2012 G.L.W. No. 11001	PROFESSIONAL CERTIFICATION I HEREBY CERTIFY THAT THESE PLANS WERE PREPARED OR APPROVED BY ME, AND THAT I AM A DULY LICENSED PROFESSIONAL ENGINEER UNDER THE LAWS OF THE STATE OF MARYLAND, LICENSE NO. 12975 EXP. DATE: MAY 26, 2014 	REV. 11-11-12 rev. B's i.c.w. to reflect lot grading. BY NO REVISION DATE	MAPLE LAWN FARMS CONTRACT No. 24-4747-D MDTOWN WEST DISTRICT - AREA 2 (PHASE 2) LOTS 93 - 177 OPEN SPACE LOTS 178 - 183 AND COMMON OPEN AREA LOTS 184 - 186 HOWARD COUNTY, MARYLAND ELECTION DISTRICT No. 5	SCALE AS SHOWN SHEET 4 OF 6
--	--	--	--	--	---	--	--

AS-BUILT INFORMATION													
LOT #	ADDRESS	WATER HOUSE CONNECTION AS BUILT		SEWER HOUSE CONNECTION AS BUILT		LOT #	ADDRESS	WATER HOUSE CONNECTION AS BUILT		SEWER HOUSE CONNECTION AS BUILT		LOT #	ADDRESS
		LOCATION DIM. 1	LOCATION DIM. 2	LOCATION DIM. 1	LOCATION DIM. 2			LOCATION DIM. 1	LOCATION DIM. 2	LOCATION DIM. 1	LOCATION DIM. 2		
93	IAGER BOULEVARD	17' TO LOT #93 SHC	48' TO LOT #108 SHC	17' TO LOT #93 WHC	62.5' TO LOT #108 SHC	136	GRAND CHAMPION ST.	38' TO LOT #136 SHC	32' TO LOT #137 WHC	38' TO LOT #136 WHC	32' TO LOT #137 WHC	136	GRAND CHAMPION ST.
94	IAGER BOULEVARD	22' TO LOT #95 SHC	57' TO LOT #94 SHC	22' TO LOT #94 WHC	57' TO LOT #94 SHC	137	GRAND CHAMPION ST.	32' TO LOT #136 WHC	54' TO LOT #137 SHC	54' TO LOT #137 WHC	61' TO LOT #141 WHC	137	ALFALFA LANE
95	IAGER BOULEVARD	22' TO LOT #95 SHC	61.5' TO LOT #110 SHC	22' TO LOT #95 WHC	83' TO LOT #110 SHC	138	ALFALFA LANE	36.5' TO LOT #138 SHC	48' TO LOT #145 SHC	36.5' TO LOT #138 WHC	93' TO LOT #139 WHC	138	ALFALFA LANE
96	IAGER BOULEVARD	54' TO LOT #114 SHC	56' TO LOT #97 SHC	56' TO LOT #97 WHC	33.5' TO LOT #97 SHC	139	ALFALFA LANE	23' TO LOT #139 SHC	20' TO LOT #139 SHC	36' TO LOT #139 WHC	35' TO LOT #140 WHC	139	ALFALFA LANE
97	IAGER BOULEVARD	57' TO LOT #114 SHC	52' TO LOT #97 SHC	56' TO LOT #97 WHC	66.5' TO LOT #115 WHC	140	ALFALFA LANE	25' TO LOT #139 SHC	15' TO LOT #140 SHC	15' TO LOT #140 WHC	54' TO LOT #141 WHC	140	ALFALFA LANE
98	IAGER BOULEVARD	21.5' TO LOT #98 SHC	67' TO LOT #99 SHC	21.5' TO LOT #98 WHC	67' TO LOT #99 WHC	141	ALFALFA LANE	19.5' TO LOT #141 SHC	59' TO LOT #140 SHC	19.5' TO LOT #141 WHC	38' TO LOT #140 SHC	141	ALFALFA LANE
99	IAGER BOULEVARD	21.5' TO LOT #98 SHC	67' TO LOT #99 SHC	21.5' TO LOT #98 WHC	67' TO LOT #99 WHC	142	SPRING AVENUE	27.5' TO LOT #142 SHC	52' TO LOT #143 SHC	27.5' TO LOT #142 WHC	55.5' TO LOT #143 SHC	142	SPRING AVENUE
100	IAGER BOULEVARD	51' TO LOT #100 SHC	52' TO LOT #117 SHC	17' TO LOT #100 WHC	51' TO LOT #100 WHC	143	SPRING AVENUE	48' TO LOT #142 SHC	12.5' TO LOT #143 SHC	82' TO LOT #142 WHC	55.5' TO LOT #142 WHC	143	SPRING AVENUE
101	IAGER BOULEVARD	64' TO LOT #101 SHC	72' TO LOT #117 SHC	64' TO LOT #101 WHC	130' TO LOT #117 SHC	144	SPRING AVENUE	23' TO LOT #143 SHC	15' TO LOT #144 SHC	18' TO LOT #144 WHC	36' TO LOT #143 SHC	144	SPRING AVENUE
102	IAGER BOULEVARD	63' TO LOT #102 SHC	26' TO LOT #103 WHC	26' TO LOT #102 WHC	26.5' TO LOT #103 SHC	145	SPRING AVENUE	38.5' TO LOT #144 SHC	14' TO LOT #145 SHC	45' TO LOT #145 WHC	11' TO LOT #145 WHC	145	SPRING AVENUE
103	IAGER BOULEVARD	15.5' TO LOT #103 SHC	28' TO LOT #102 WHC	28' TO LOT #102 WHC	15.5' TO LOT #103 SHC	146	SPRING AVENUE	15' TO LOT #145 SHC	39.5' TO LOT #145 SHC	15' TO LOT #146 WHC	62.5' TO LOT #138 SHC	146	SPRING AVENUE
104	IAGER BOULEVARD	19.5' TO LOT #104 SHC	28' TO LOT #103 SHC	30.5' TO LOT #105 WHC	13.5' TO LOT #104 WHC	147	GRAND CHAMPION ST.	46' TO LOT #147 SHC	61' TO LOT #137 SHC	46' TO LOT #147 WHC	55.5' TO LOT #137 WHC	147	GRAND CHAMPION ST.
105	IAGER BOULEVARD	12' TO LOT #105 SHC	30.5' TO LOT #104 SHC	28' TO LOT #106 WHC	12' TO LOT #105 WHC	148	GRAND CHAMPION ST.	14' TO LOT #148 SHC	93' TO LOT #121 SHC	14' TO LOT #148 WHC	101' TO LOT #121 SHC	148	GRAND CHAMPION ST.
106	IAGER BOULEVARD	15' TO LOT #106 SHC	28.5' TO LOT #105 SHC	37' TO LOT #107 WHC	15' TO LOT #106 WHC	149	GRAND CHAMPION ST.	13' TO LOT #149 SHC	47.5' TO LOT #172 SHC	13' TO LOT #149 WHC	82.5' TO LOT #150 WHC	149	GRAND CHAMPION ST.
107	IAGER BOULEVARD	15' TO LOT #107 SHC	37' TO LOT #106 SHC	15' TO LOT #107 WHC	49.5' TO LOT #106 SHC	150	ELMWOOD ROAD	39' TO LOT #150 SHC	32' TO LOT #151 SHC	82.5' TO LOT #149 SHC	39' TO LOT #150 WHC	150	ELMWOOD ROAD
108	IAGER BOULEVARD	15' TO LOT #108 SHC	23.5' TO LOT #108 WHC	23.5' TO LOT #108 WHC	35.5' TO LOT #108 SHC	151	ELMWOOD ROAD	14' TO LOT #151 SHC	25' TO LOT #152 SHC	32' TO LOT #151 WHC	14' TO LOT #151 WHC	151	ELMWOOD ROAD
109	IAGER BOULEVARD	39' TO LOT #110 SHC	22.5' TO LOT #109 SHC	22.5' TO LOT #109 WHC	15' TO LOT #109 WHC	152	ELMWOOD ROAD	11' TO LOT #152 SHC	45' TO LOT #153 SHC	22' TO LOT #151 WHC	11' TO LOT #152 WHC	152	ELMWOOD ROAD
110	IAGER BOULEVARD	22.5' TO LOT #110 SHC	12.5' TO LOT #110 SHC	12.5' TO LOT #110 WHC	39' TO LOT #109 WHC	153	ELMWOOD ROAD	19' TO LOT #153 SHC	30.5' TO LOT #154 SHC	40' TO LOT #152 WHC	19' TO LOT #153 WHC	153	ELMWOOD ROAD
111	IAGER BOULEVARD	28' TO LOT #112 SHC	17' TO LOT #111 SHC	17' TO LOT #111 WHC	22.5' TO LOT #110 WHC	154	ELMWOOD ROAD	37.5' TO LOT #154 SHC	51' TO LOT #163 SHC	45.5' TO LOT #163 WHC	30.5' TO LOT #153 WHC	154	ELMWOOD ROAD
112	IAGER BOULEVARD	53' TO LOT #113 SHC	23.5' TO LOT #112 SHC	23.5' TO LOT #112 WHC	29' TO LOT #111 WHC	155	ELMWOOD ROAD	50' TO LOT #155 SHC	34' TO LOT #156 SHC	61.5' TO LOT #164 WHC	44.5' TO LOT #165 WHC	155	ELMWOOD ROAD
113	IAGER BOULEVARD	10' TO LOT #114 SHC	38.5' TO LOT #113 SHC	38.5' TO LOT #113 WHC	49' TO LOT #114 WHC	156	ELMWOOD ROAD	50' TO LOT #155 SHC	44' TO LOT #156 SHC	50' TO LOT #156 WHC	44' TO LOT #155 WHC	156	ELMWOOD ROAD
114	IAGER BOULEVARD	32' TO LOT #114 SHC	10' TO LOT #113 WHC	21' TO LOT #115 WHC	32' TO LOT #114 WHC	157	ELMWOOD ROAD	27' TO LOT #156 SHC	24' TO LOT #157 SHC	24' TO LOT #157 WHC	9' TO LOT #158 SHC	157	ELMWOOD ROAD
115	IAGER BOULEVARD	19.5' TO LOT #115 SHC	21' TO LOT #114 SHC	21' TO LOT #114 WHC	17.5' TO LOT #115 WHC	158	ELMWOOD ROAD	35' TO LOT #156 SHC	42' TO LOT #159 SHC	35' TO LOT #158 WHC	9' TO LOT #157 WHC	158	ELMWOOD ROAD
116	IAGER BOULEVARD	19.5' TO LOT #116 SHC	21' TO LOT #115 SHC	22' TO LOT #117 WHC	19.5' TO LOT #116 WHC	159	ELMWOOD ROAD	42' TO LOT #158 SHC	40' TO LOT #158 SHC	23.5' TO LOT #160 WHC	42' TO LOT #159 WHC	159	ELMWOOD ROAD
117	IAGER BOULEVARD	20.5' TO LOT #117 SHC	22' TO LOT #116 SHC	33' TO LOT #118 WHC	20.5' TO LOT #117 SHC	160	ELMWOOD ROAD	35' TO LOT #163 WHC	23.5' TO LOT #163 WHC	41' TO LOT #160 WHC	56.5' TO LOT #159 WHC	160	ELMWOOD ROAD
118	IAGER BOULEVARD	37.5' TO LOT #117 WHC	22' TO LOT #116 SHC	51' TO LOT #117 WHC	33' TO LOT #117 WHC	161	ELMWOOD ROAD	15' TO LOT #161 SHC	57.5' TO SMH 123	15' TO LOT #161 WHC	71.5' TO SMH 123	161	ELMWOOD ROAD
119	GRAND CHAMPION ST.	19' TO LOT #119 SHC	55.5' TO LOT #120 SHC	48.5' TO LOT #119 WHC	13' TO LOT #119 WHC	162	ELMWOOD ROAD	14.5' TO LOT #162 SHC	31' TO SMH 124	14.5' TO LOT #162 WHC	80.5' TO SMH 124	162	ELMWOOD ROAD
120	GRAND CHAMPION ST.	23' TO LOT #120 SHC	17.5' TO LOT #121 SHC	17.5' TO LOT #121 WHC	29' TO LOT #120 WHC	163	ELMWOOD ROAD	35' TO LOT #160 WHC	30' TO LOT #163 SHC	30' TO LOT #163 WHC	106.5' TO SMH 124	163	ELMWOOD ROAD
121	GRAND CHAMPION ST.	22' TO LOT #121 SHC	22.5' TO LOT #122 SHC	17.5' TO LOT #122 WHC	22' TO LOT #121 WHC	164	ELMWOOD ROAD	54' TO LOT #164 SHC	61.5' TO LOT #158 SHC	54' TO LOT #164 WHC	26.5' TO LOT #164 WHC	164	ELMWOOD ROAD
122	GRAND CHAMPION ST.	22' TO LOT #122 SHC	19' TO LOT #123 SHC	22.5' TO LOT #121 WHC	22' TO LOT #122 WHC	165	ELMWOOD ROAD	31' TO LOT #165 SHC	44' TO LOT #158 SHC	31' TO LOT #165 WHC	87' TO LOT #166 WHC	165	ELMWOOD ROAD
123	GRAND CHAMPION ST.	29' TO LOT #123 SHC	21.5' TO LOT #124 SHC	19' TO LOT #124 WHC	29' TO LOT #123 WHC	166	ELMWOOD ROAD	12' TO LOT #166 SHC	87' TO LOT #165 SHC	12' TO LOT #166 WHC	79.5' TO LOT #167 WHC	166	ELMWOOD ROAD
124	GRAND CHAMPION ST.	27.5' TO LOT #124 SHC	46' TO LOT #125 SHC	21.5' TO LOT #125 WHC	27.5' TO LOT #124 WHC	167	ELMWOOD ROAD	12' TO LOT #167 SHC	79.5' TO LOT #166 SHC	12' TO LOT #167 WHC	56.5' TO LOT #164 WHC	167	ELMWOOD ROAD
125	GRAND CHAMPION ST.	31' TO LOT #125 SHC	46' TO LOT #126 SHC	31' TO LOT #125 WHC	31' TO LOT #125 WHC	168	ELMWOOD ROAD	22' TO LOT #168 SHC	45.5' TO LOT #154 SHC	22' TO LOT #168 WHC	51' TO LOT #154 WHC	168	ELMWOOD ROAD
126	GRAND CHAMPION ST.	32' TO LOT #126 SHC	25' TO LOT #127 SHC	25' TO LOT #127 WHC	32' TO LOT #126 WHC	169	ELMWOOD ROAD	22' TO LOT #168 SHC	45.5' TO LOT #154 SHC	22' TO LOT #168 WHC	51' TO LOT #154 WHC	169	ELMWOOD ROAD
127	GRAND CHAMPION ST.	34' TO LOT #127 SHC	25.5' TO LOT #128 SHC	25.5' TO LOT #128 WHC	34' TO LOT #127 WHC	170	ELMWOOD ROAD	16.5' TO LOT #170 SHC	89' TO LOT #169 SHC	16.5' TO LOT #170 WHC	45' TO LOT #172 SHC	170	ELMWOOD ROAD
128	GRAND CHAMPION ST.	21.5' TO LOT #128 SHC	49' TO LOT #129 SHC	49' TO LOT #128 WHC	21.5' TO LOT #128 WHC	171	ELMWOOD ROAD	16.5' TO LOT #170 SHC	89' TO LOT #169 SHC	16.5' TO LOT #170 WHC	45' TO LOT #172 SHC	171	ELMWOOD ROAD
129	GRAND CHAMPION ST.	21.5' TO LOT #129 SHC	49' TO LOT #129 SHC	49' TO LOT #129 WHC	49' TO LOT #129 WHC	172	ELMWOOD ROAD	26' TO LOT #172 SHC	70.5' TO LOT #171 SHC	26' TO LOT #172 WHC	47.5' TO LOT #149 WHC	172	ELMWOOD ROAD
130	GRAND CHAMPION ST.	20.5' TO LOT #130 SHC	20.5' TO LOT #130 WHC	85.5' TO LOT #129 WHC	20.5' TO LOT #129 WHC	173	ELMWOOD ROAD	14' TO LOT #173 SHC	79.5' TO LOT #173 SHC	14' TO LOT #173 WHC	53.5' TO LOT #175 WHC	173	ELMWOOD ROAD
131	GRAND CHAMPION ST.	54' TO LOT #132 SHC	92.5' TO LOT #131 SHC	92.5' TO LOT #131 WHC	56.5' TO LOT #132 WHC	174	ELMWOOD ROAD	19.5' TO LOT #174 SHC	48.5' TO LOT #170 SHC	79.5' TO LOT #173 WHC	19.5' TO LOT #174 WHC	174	ELMWOOD ROAD
132	GRAND CHAMPION ST.	24.5' TO LOT #133 SHC	35.5' TO LOT #132 SHC	35.5' TO LOT #132 WHC	54' TO LOT #134 WHC	175	ELMWOOD ROAD	22.5' TO LOT #175 SHC	53.5' TO LOT #174 SHC	22.5' TO LOT #175 WHC	63' TO LOT #175 WHC	175	ELMWOOD ROAD
133	GRAND CHAMPION ST.	26' TO LOT #134 SHC	42' TO LOT #133 SHC	42' TO LOT #133 WHC	24.5' TO LOT #133 WHC	176	ELMWOOD ROAD	63' TO LOT #175 SHC	47.5' TO LOT #177 WHC	13.5' TO LOT #176 WHC	39' TO LOT #177 WHC	176	ELMWOOD ROAD
134	GRAND CHAMPION ST.	26' TO LOT #135 SHC	34' TO LOT #134 SHC	37.5' TO LOT #135 WHC	34' TO LOT #134 WHC	177	ELMWOOD ROAD	47.5' TO LOT #176 WHC	31.5' TO LOT #178 WHC	86' TO LOT #177 WHC	57.5' TO LOT #178 WHC	177	ELMWOOD ROAD
135	GRAND CHAMPION ST.	22.5' TO LOT #136 SHC	37.5' TO LOT #135 SHC	26' TO LOT #134 WHC	37.5' TO LOT #134 WHC	POG PAVES	OPEN SPACE LOT	37' TO LOT #160 SHC	80.5' TO LOT #162 SHC				



MINIMUM CELLAR ELEVATIONS (M.C.E.)											
LOT	INV. @ MAIN/WH	INV. @ R/W	M.C.E.	LOT	INV. @ MAIN/WH	INV. @ R/W	M.C.E.	LOT	INV. @ MAIN/WH	INV. @ R/W	M.C.E.
93	410.24	411.02	415.64	122	411.72	411.92	422.72	151	421.84	422.23	426.34
94	411.83	412.61	417.23	123	418.10	418.30	423.10	152	422.61	422.95	427.11
95	413.02	413.80	418.42	124	418.63	418.83	423.63	153	423.88	424.18	428.38
96	415.76	416.54	421.16	125	342.04	342.24	347.04	154	415.46	415.80	419.56
97	415.26	416.04	420.66	126	340.55	340.75	345.55	155	424.31	424.61	429.31
98	402.13	402.91	407.53	127	420.31	420.51	425.31	156	434.66	435.00	439.36
99	411.67	412.45	417.07	128	420.81	420.94	425.41	157	435.33	435.67	440.33
100	408.25	409.03	413.65	129	425.20	425.40	429.60	158	436.16	436.46	440.76
101	404.92	405.70	410.32	130	425.60	425.80	430.20	159	435.86	436.16	440.36
102	415.01	415.79	418.83	131	424.94	425.14	430.41	160	434.74	435.08	439.84
103	414.71	415.49	418.53	132	423.04	423.24	427.64	161	432.74	433.08	437.18
104	414.41	415.19	418.23	133	423.24	423.44	427.84	162	434.12	434.46	438.62
105	414.11	414.89	417.93	134	423.24	423.44	427.84	163	435.14	435.48	439.64
106	413.94	414.72	417.76	135	423.80	424.00	428.40	164	434.71	435.05	439.19
107	410.30	411.08	414.12	136	426.34	426.54	430.94	165	432.33	432.67	437.17
108	409.63	410.41	413.45	137	422.26	422.46	426.86	166	424.31	424.65	429.15
109	410.78	411.56	414.60	138	421.51	421.71	426.11	167	421.24	421.58	426.02
110	405.19	405.97	411.01	139	430.81	431.01	435.41	168	425.73	426.07	430.51
111	412.48	413.26	416.30	140	348.33	348.53	352.93	169	423.20	423.54	427.60
112	344.53	345.31	348.35	141	432.22	432.42	436.82	170	421.51	421.85	426.11
113	415.80	416.58	420.60	142	431.30	431					