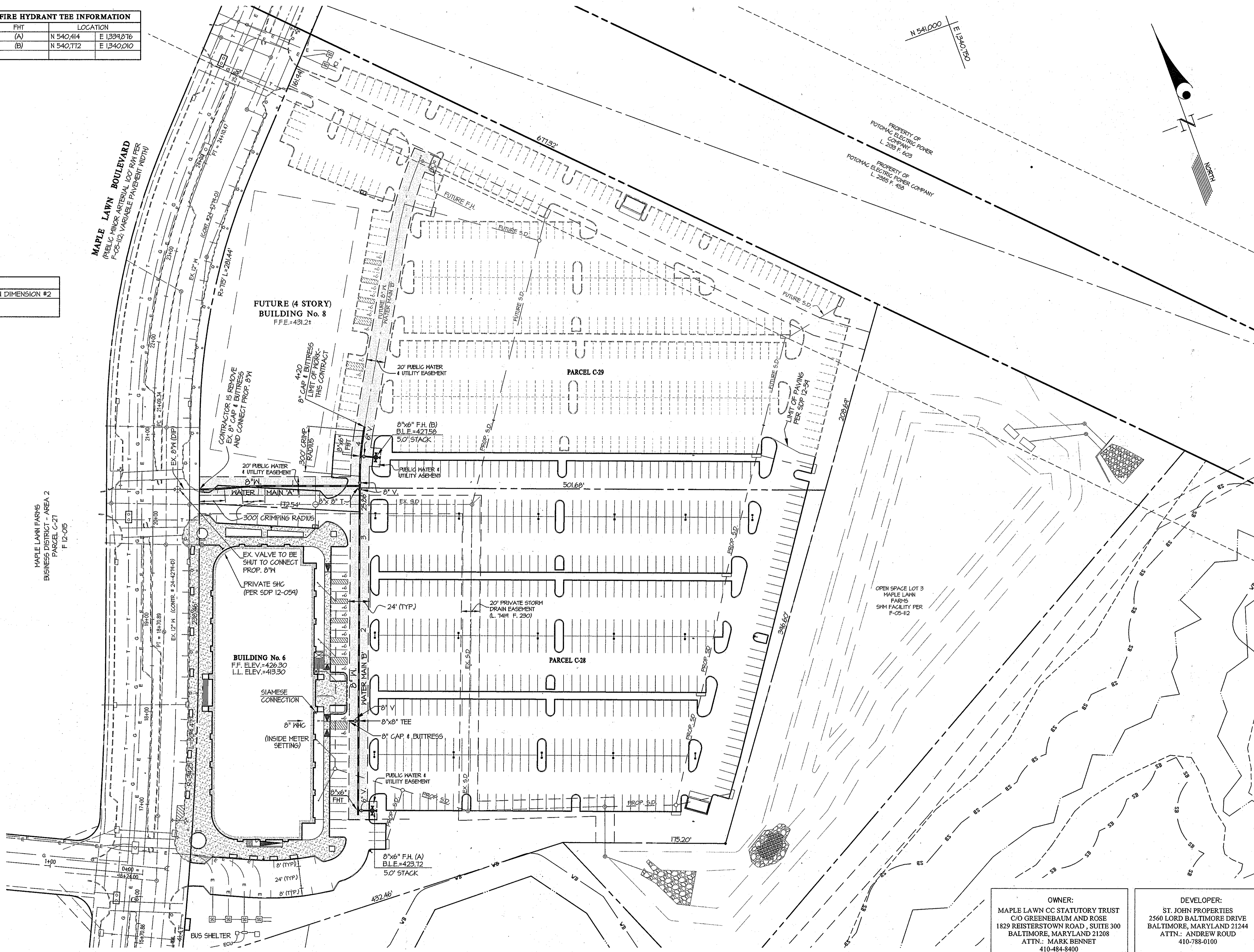


FITTING CHART			
STATION	FITTING	NAD '83/'91 COORDINATES	
WATER MAIN 'B'			
0+00	8" CAP & BUTTRESS	N 540,415	E 1334,980
0+05	8" x 6" F.H.T.	N 540,420	E 1334,862
3+55	8" x 8" T.	N 540,744	E 1334,983
3+88	8" x 6" F.H.T.	N 540,714	E 1334,985
4+20	8" CAP & BUTTRESS	N 540,807	E 1340,010

FIRE HYDRANT TEE INFORMATION		
FHT	LOCATION	
(A)	N 540,414	E 1334,876
(B)	N 540,712	E 1340,010

CRIMPING RADII INFORMATION			
STATION	FITTING	NAD '83/'91 COORDINATES	
WATER MAIN 'A'			
0+00	P.C.	N 540,804	E 1334,820
0+27	P.T.	N 540,746	E 1334,845
0+45	P.C.	N 540,741	E 1334,863
0+70	P.T.	N 540,784	E 1334,887
WATER MAIN 'B'			
3+65	P.C.	N 540,754	E 1334,887
4+14	P.T.	N 540,803	E 1340,008

WATER HOUSE CONNECTION AS-BUILT LOCATION TABLE			
O.B. #6	ADDRESS	LOCATION DIMENSION #1	LOCATION DIMENSION #2
	8135 MAPLE LAWN BOULEVARD		



N 541,000
E 1334,920

N 540,750
E 1334,500

OWNER:
MAPLE LAWN CC STATUTORY TRUST
C/O GREENBAUM AND ROSE
1829 REISTERSTOWN ROAD, SUITE 300
BALTIMORE, MARYLAND 21208
ATTN: MARK BENNETT
410-484-8400

DEVELOPER:
ST. JOHN PROPERTIES
2560 LORD BALTIMORE DRIVE
BALTIMORE, MARYLAND 21244
ATTN: ANDREW ROUD
410-788-0100

L:\CAD\DRAWINGS\66079\11095\PLANS BY GUY\WATER\Plan\11095-026.dwg
PLOTTED: 7/11/2012 1:51 PM, LAST SAVED: 7/11/2012 1:49 PM, PLOTTED BY: John J. Sobiech

DEPARTMENT OF
PUBLIC WORKS
HOWARD COUNTY, MARYLAND

John J. Sobiech
7/11/12
CHIEF, BUREAU OF UTILITIES
DATE

DEPARTMENT OF
PLANNING AND ZONING
HOWARD COUNTY, MARYLAND

John J. Sobiech
7/11/12
CHIEF, DEVELOPMENT ENGINEERING DIVISION
DATE

GLW GUTSCHICK LITTLE & WEBER, P.A.
CIVIL ENGINEERS, LAND SURVEYORS, LAND PLANNERS, LANDSCAPE ARCHITECTS
3909 NATIONAL DRIVE - SUITE 250 - BURTONSVILLE OFFICE PARK
BURTONSVILLE, MARYLAND 20886
TEL: 301-421-4024 BAL: 410-889-1820 DC/VA: 301-899-2524 FAX: 301-421-4186

DES. DEV DRN. GT CHK. CKG

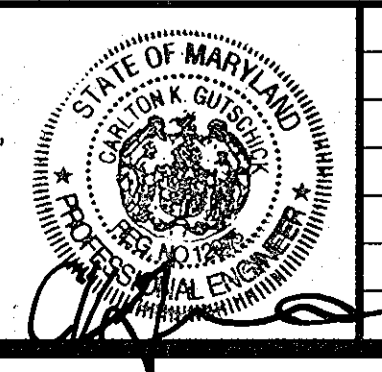
DATE
JULY,
2012

G.L.W. No.
11095

PROFESSIONAL CERTIFICATION

I HEREBY CERTIFY THAT THESE PLANS
WERE PREPARED OR APPROVED BY ME,
AND THAT I AM A DULY LICENSED
PROFESSIONAL ENGINEER UNDER THE
LAWS OF THE STATE OF MARYLAND,
LICENSE NO. 12975
EXP. DATE: MAY 26, 2014

John J. Sobiech
7/11/12



BY	NO	REVISION	DATE

WATER EXTENSION
PLAN

600' SCALE MAP NO. 46
BLOCK NO. 4

MAPLE LAWN FARMS
CONTRACT No. 24-4746-D
BUSINESS DISTRICT - AREA 2
PARCEL 'C' - 28' (OFFICE BUILDING No.6)
PLAT Nos. _____ and _____
HOWARD COUNTY, MARYLAND
ELECTION DISTRICT No. 5

SCALE
1" = 50'

SHEET
2 OF 3

