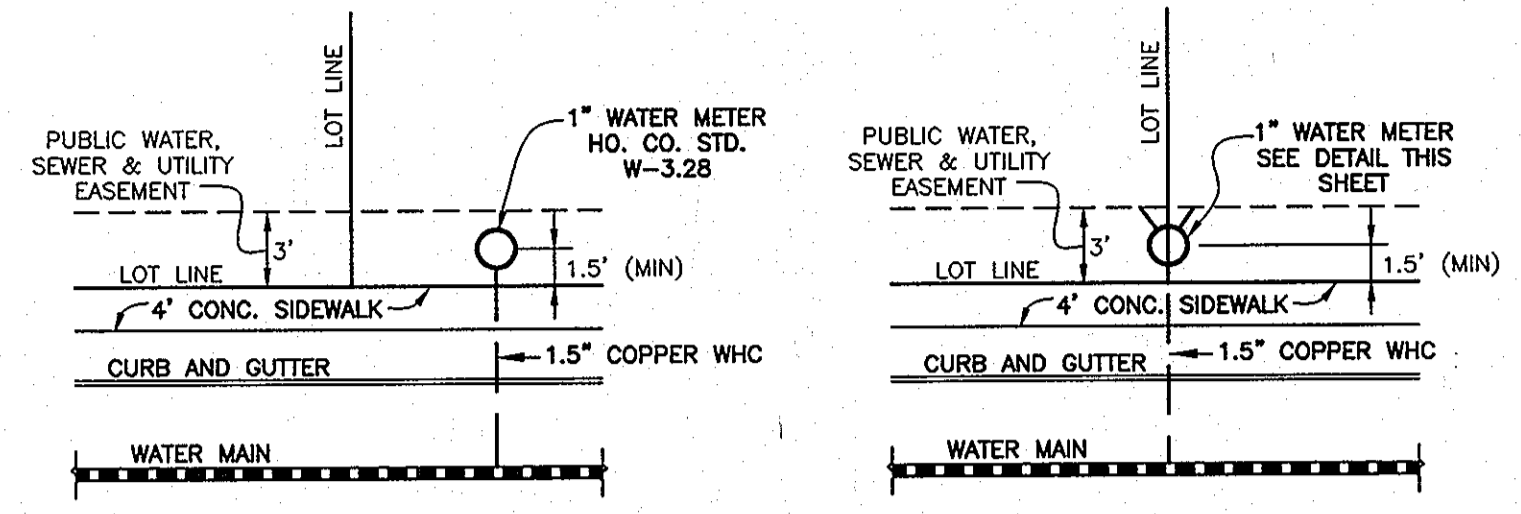
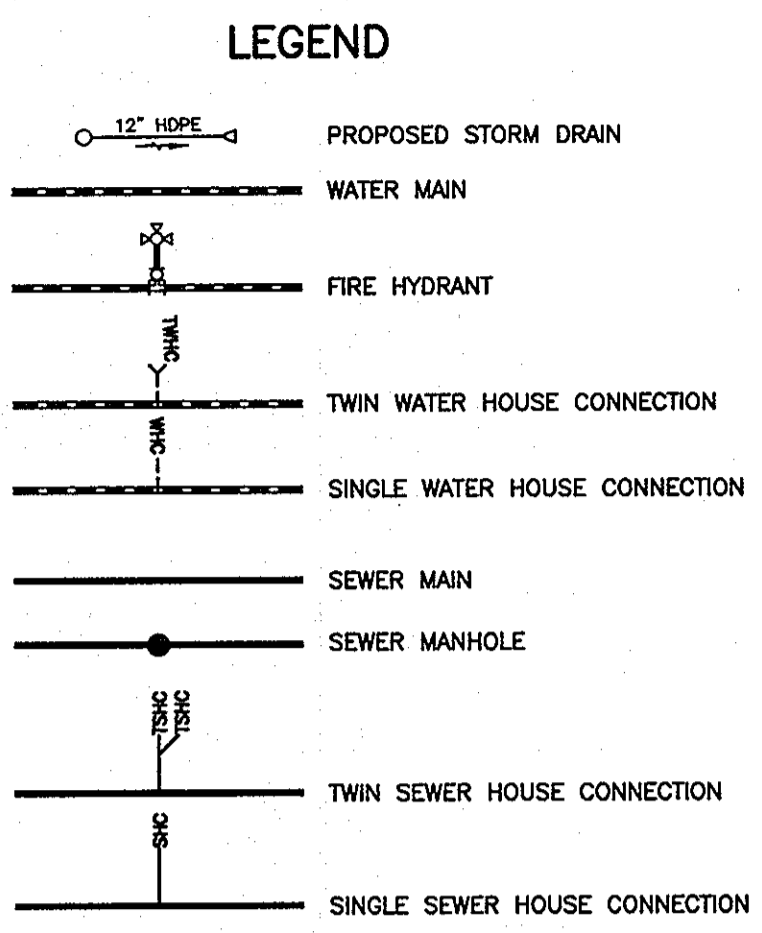
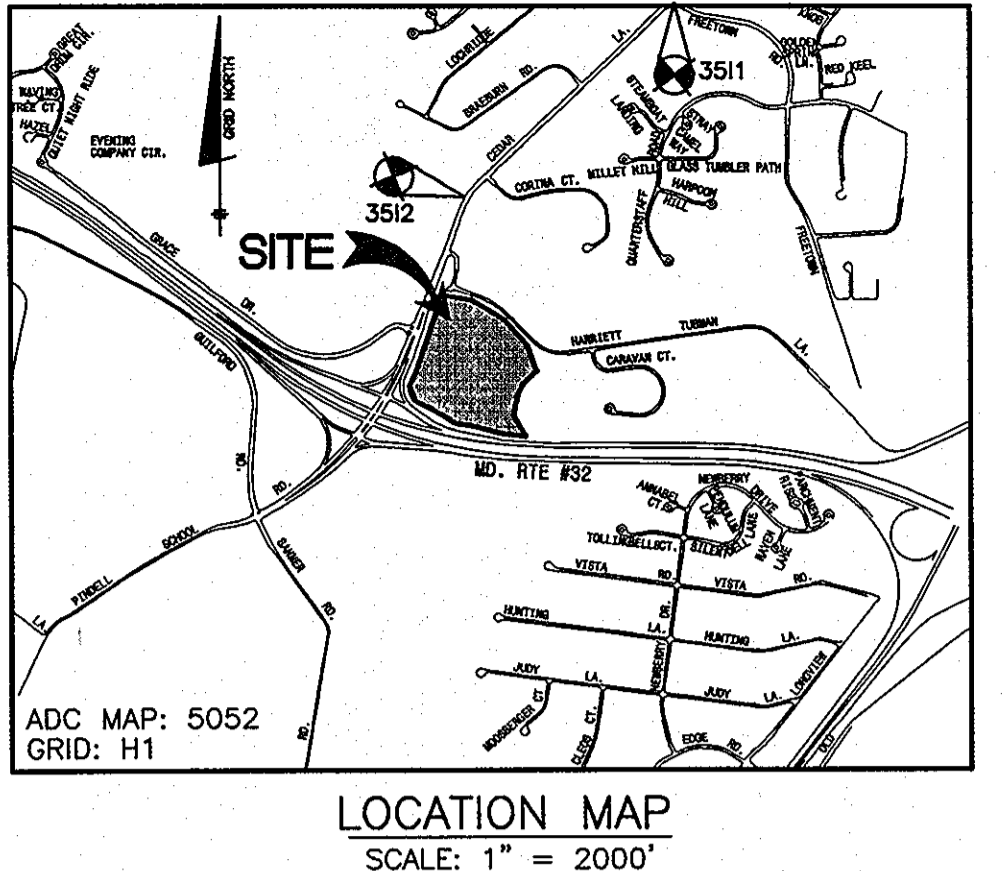


SIMPSON MILL - PHASE 2

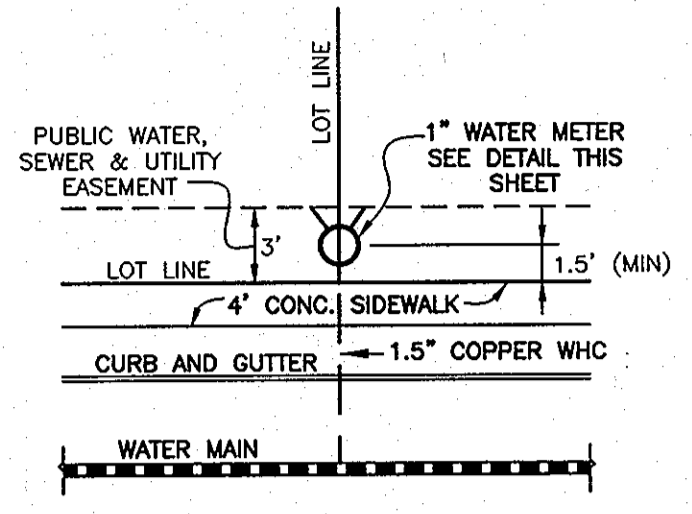
PUBLIC WATER AND PUBLIC SEWER CONSTRUCTION PLANS

CONTRACT NO. 34-4739-D

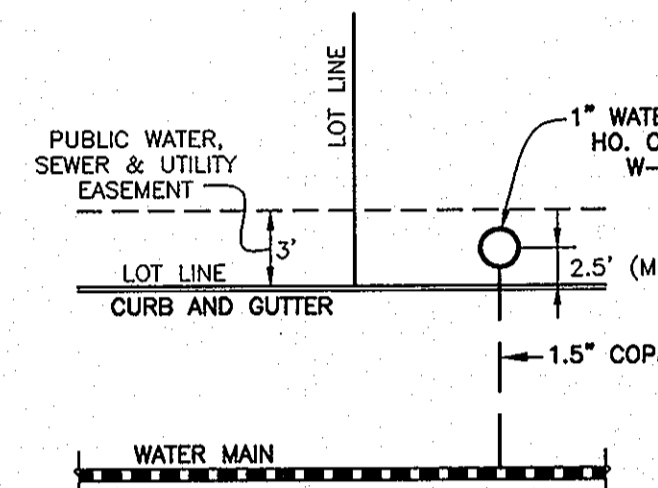
| BENCHMARK NAD'83 | |
|--|-----------------|
| HO. CO. #3511 | |
| STAMPED DISC SET ON TOP OF A 3" DEEP COLUMN OF CONCRETE 2" BELOW SURFACE | |
| N 557110.3963' | E 1344893.6204' |
| ELEV. 400.034' | |
| HO. CO. #3512 | |
| STAMPED DISC SET ON TOP OF A 3" DEEP COLUMN OF CONCRETE 2" BELOW SURFACE | |
| N 555100.7743' | E 1342732.9971' |
| ELEV. 329.719' | |



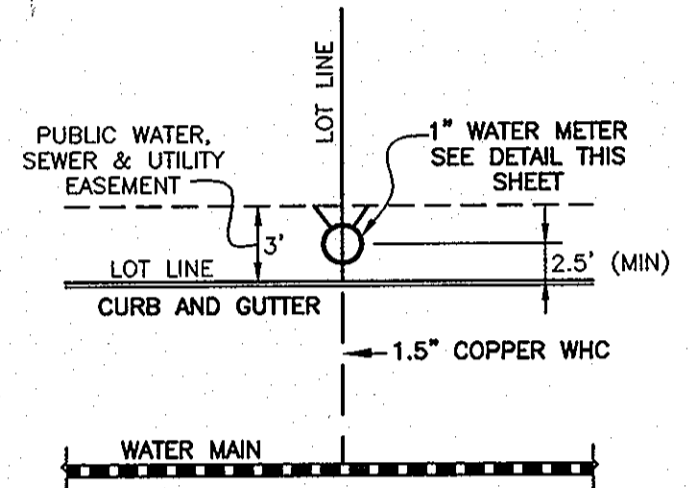
TYPICAL SINGLE WATER HOUSE CONNECTION
w/FRONT SIDEWALK
(OUTSIDE METER SETTING)
NOT TO SCALE



TYPICAL TWIN WATER HOUSE CONNECTION
w/FRONT SIDEWALK
(OUTSIDE METER SETTING)
NOT TO SCALE



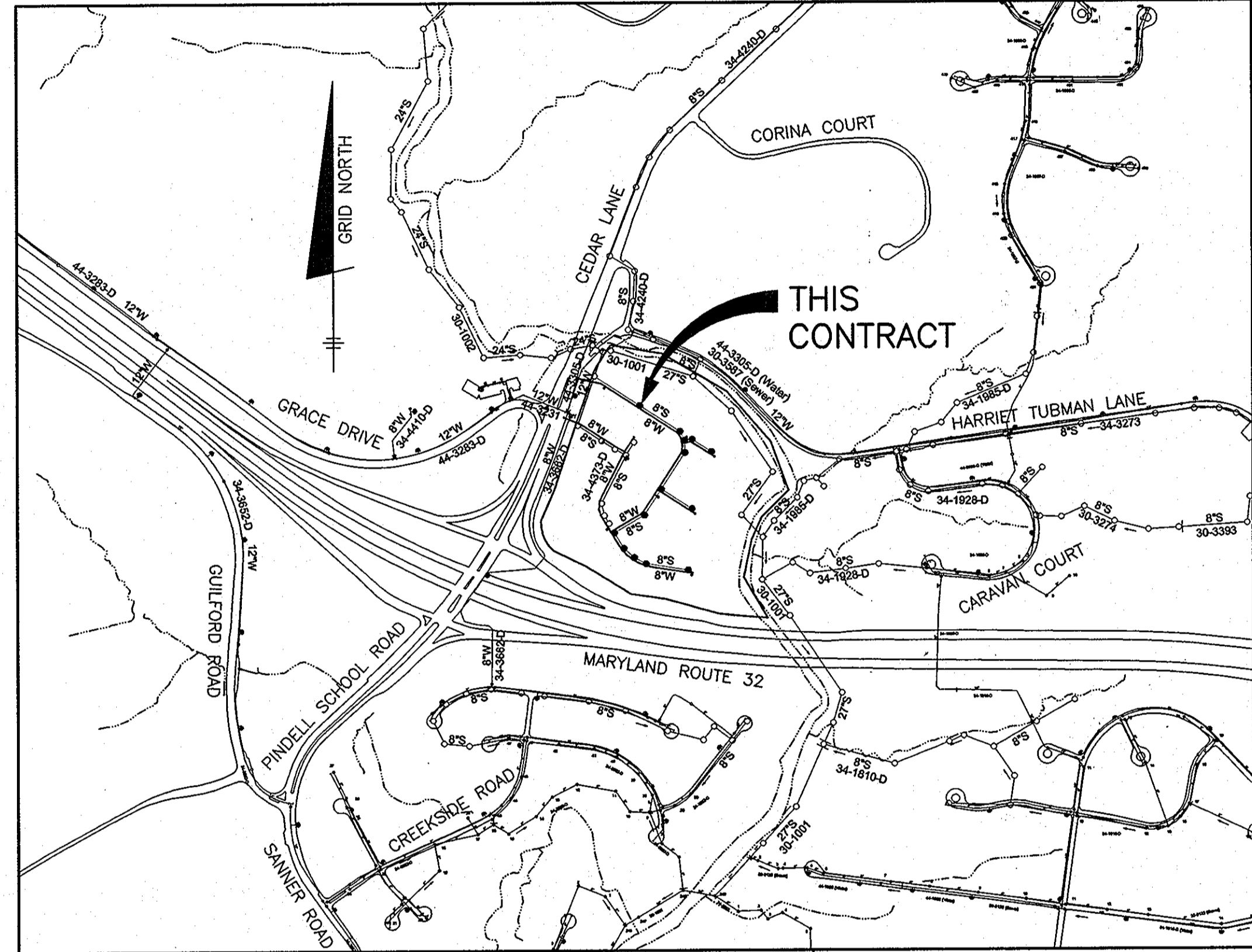
TYPICAL SINGLE WATER HOUSE CONNECTION
NO SIDEWALK
(OUTSIDE METER SETTING)
NOT TO SCALE



TYPICAL TWIN WATER HOUSE CONNECTION
NO SIDEWALK
(OUTSIDE METER SETTING)
NOT TO SCALE

NOTE:
SEE HO. CO. STD. DETAIL W-3.28 FOR SINGLE OUTSIDE METER SETTING
SEE DETAIL ON THIS SHEET FOR TWIN OUTSIDE METER SETTINGS

NOTE: HOUSE CONNECTIONS TO BE SIZED ACCORDINGLY:
SINGLE WHC = 1.5"
TWIN WHC = 1.5"
SINGLE SHC = 4"
TWIN SHC = 6"x4"



VICINITY MAP
SCALE: 1" = 600'

QUANTITIES

| ITEMS | QUANTITIES ESTIMATED | AS-BUILT | | MANUF./SUPPLIER |
|---|----------------------|------------|-----------|--------------------|
| | | QUANTITIES | TYPE | |
| 8" PVC C900 WATER (DR18) | 2,360 LF | 2,360 LF | DR18 C900 | NORTH AMERICAN |
| FIRE HYDRANTS (INCL. 8"x6" TEE & VALVE) | 4 EA | 4 EA | B62B | AMERICAN DARLING |
| 1.5" WHC | 1894 LF | 1894 LF | TYPE K | MUCONEX INDUSTRIES |
| 12"x8" TS&V | 1 EA | 1 EA | #66355 | SMITH BLAIR |
| 8" PVC SEWER (SDR35) | 1743 LF | 1743 LF | PVC SDR35 | NORTH AMERICAN |
| 8" PVC C900 SEWER MANHOLES | 359 LF | 359 LF | DR18 C900 | NORTH AMERICAN |
| MANHOLES | 14 EA | 14 EA | 42 | CONTRACTOR PRECAST |
| TYPE 'B' DROP @ MH | 2 EA | 2 EA | PVC SDR35 | MULTI FITTINGS |
| 4" SHC | 1869 LF | 1869 LF | PVC SDR35 | NORTH AMERICAN |

NAME OF UTILITY CONTRACTOR:
SURVEY AND DRAFTING DIVISION AS-BUILT DATE:

WELL AND SEPTIC ABANDONMENT CHART

| ADDRESS | WELL/SEPTIC | ACTION |
|-----------------|-------------|--|
| 6701 CEDAR LANE | WELL | TO BE ABANDONED BY A LICENSED WELL DRILLER |
| | SEPTIC | 1,000 Gd SEPTIC TANK PUMPED, CRUSHED & FILLED IN OCTOBER, 2011 |

SHEET INDEX

| NO. | DESCRIPTION |
|-----|--|
| 1 | TITLE SHEET PUBLIC WATER & SEWER MAINS |
| 2-3 | PLAN VIEW PUBLIC WATER & SEWER MAINS |
| 4-5 | PROFILES PUBLIC WATER & SEWER MAINS |

| | |
|----------------------------|-----------------|
| TYPE OF BUILDING: | SFA |
| NO. OF LOTS/PARCELS/UNITS: | 150 |
| NUMBER OF SHC'S: | 120 |
| NUMBER OF WHC'S: | 120 |
| DRAINAGE AREA: | MIDDLE PATUXENT |
| TREATMENT PLANT: | |
| WATER ZONE: | 550 |
| TEST GRADIENT: | 700 |

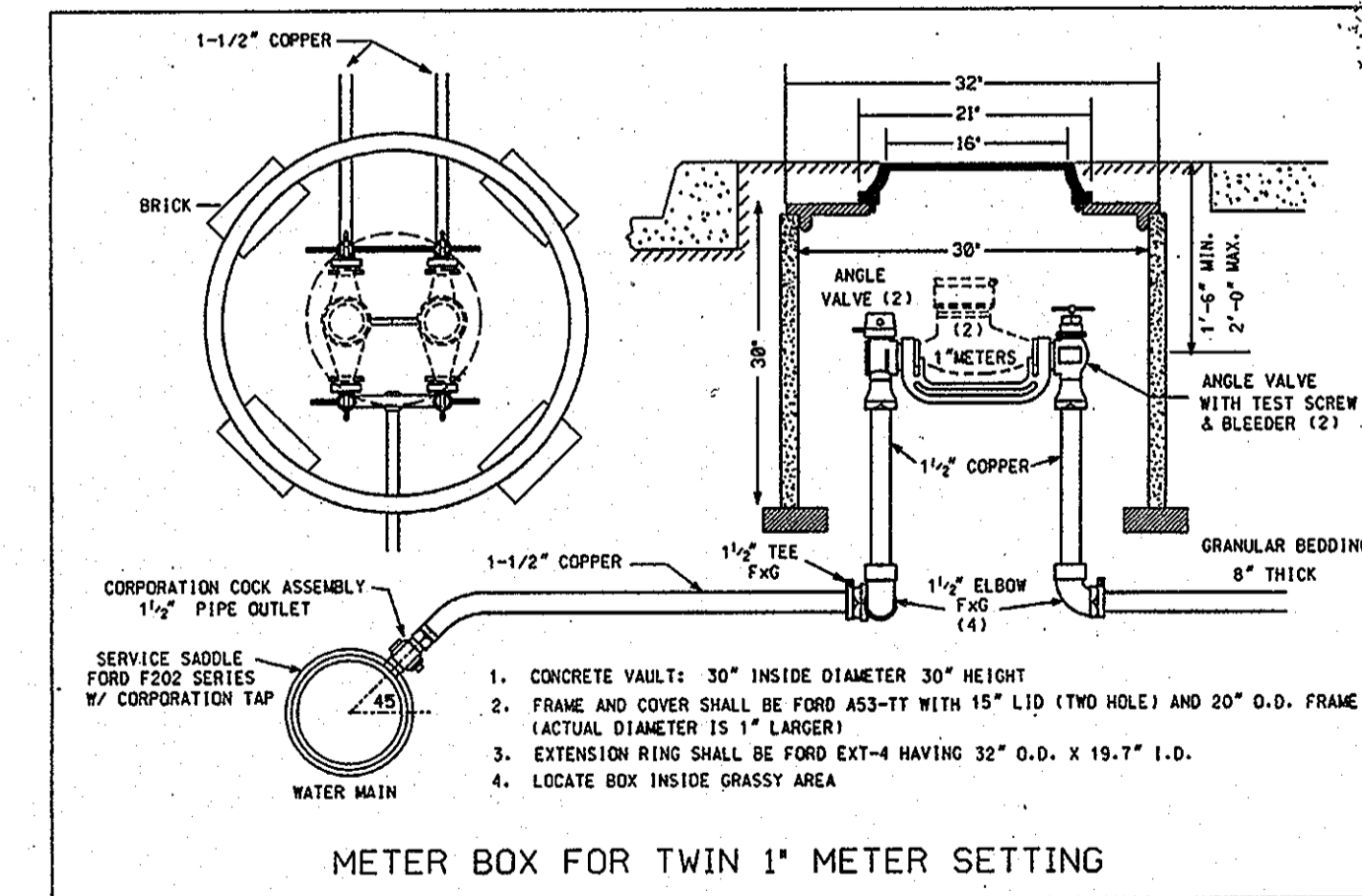
THIS PLAN IS APPROVED FOR SOIL EROSION AND SEDIMENT CONTROL BY THE HOWARD SOIL CONSERVATION DISTRICT.

John R. Roberts 5/21/12
HOWARD SOIL CONSERVATION DISTRICT DATE

OWNER/DEVELOPER:
SIMPSON MILL, LLC
P.O. BOX 417
ELLCOTT CITY, MARYLAND 21041
410-465-4244

Professional Certification. I hereby certify that these documents were prepared or approved by me, and that I am a duly licensed professional engineer under the laws of the State of Maryland, License No. 28559, Expiration Date: 7-22-2013.

NOTE: ALL JOINTS AND CONNECTIONS LOCATED WITHIN STRUCTURAL FILL AREAS SHALL BE MECHANICALLY RESTRAINED IN ACCORDANCE WITH HOWARD COUNTY DESIGN MANUAL, VOLUME IV, STANDARD SPECIFICATIONS AND DETAILS FOR CONSTRUCTION (LATEST EDITION)



GENERAL NOTES

- #### PART I
- APPROXIMATE LOCATIONS OF EXISTING MAINS ARE SHOWN. THE CONTRACTOR SHALL TAKE ALL NECESSARY PRECAUTIONS TO PROTECT EXISTING MAINS AND SERVICES AND MAINTAIN UNINTERRUPTED SERVICE. ANY DAMAGE INCURRED SHALL BE REPAIRED IMMEDIATELY TO THE SATISFACTION OF THE ENGINEER AT THE CONTRACTOR'S EXPENSE.
 - TOPOGRAPHIC FIELD SURVEYS WERE PERFORMED IN MAY, 2007 BY SILL, ADCOCK & ASSOCIATES AND IN FEBRUARY, 2003 BY BENCHMARK ENGINEERING, INC.
 - HORIZONTAL AND VERTICAL SURVEY CONTROLS:
THE COORDINATES SHOWN ON THE DRAWINGS ARE BASED ON MARYLAND STATE REFERENCE SYSTEM NAD '83/91 AS PROJECTED BY HOWARD COUNTY GEODETIC CONTROL STATIONS NO. 3512 AND NO. 3511.
 - ALL VERTICAL CONTROLS ARE BASED ON NAVD '88. VERTICAL CONTROLS PROVIDED ON THE DRAWINGS ARE 3512 AND 3511.
 - ALL PIPE ELEVATIONS SHOWN ARE INVERT ELEVATIONS UNLESS OTHERWISE NOTED ON THE PLANS.
 - CLEAR ALL UTILITIES BY A MINIMUM OF 12 INCHES. CLEAR ALL POLES BY 5'-0" MINIMUM OR TUNNEL AS REQUIRED UNLESS OTHERWISE NOTED. THE OWNER HAS CONTACTED THE UTILITY COMPANIES AND HAS MADE ARRANGEMENTS FOR BRACING OF POLES AS SHOWN ON THE DRAWINGS. IN THE EVENT THE CONTRACTOR'S WORK REQUIRES THE BRACING OF ADDITIONAL POLES, THE COST INCURRED BY THE OWNER FOR THE BRACING OF ADDITIONAL POLES OR DAMAGES SHALL BE DEDUCTED FROM MONIES OWED THE CONTRACTOR. THE CONTRACTOR SHALL COORDINATE WITH THE UTILITY COMPANIES TO SCHEDULE THE BRACING OF THE POLES.
 - FOR DETAILS NOT SHOWN ON THE DRAWING, AND FOR MATERIALS AND CONSTRUCTION METHODS, USE HOWARD COUNTY DESIGN MANUAL VOLUME IV, STANDARD SPECIFICATIONS AND DETAILS FOR CONSTRUCTION (LATEST EDITION). THE CONTRACTOR SHALL HAVE A COPY OF VOLUME IV ON THE JOB.
 - WHERE TEST FITS HAVE BEEN MADE ON EXISTING UTILITIES, THEY ARE NOTED BY THE SYMBOL 'X' AT THE LOCATIONS OF THE TEST FITS. A NOTE OR NOTES CONTAINING THE RESULTS OF THE TEST PIT OR FITS IS INCLUDED ON THE DRAWINGS. EXISTING UTILITIES IN THE VICINITY OF THE PROPOSED WORK FOR WHICH TEST FITS HAVE NOT BEEN DUG SHALL BE LOCATED BY THE CONTRACTOR TWO WEEKS IN ADVANCE OF CONSTRUCTION OPERATIONS AT HIS OWN EXPENSE.
 - THE CONTRACTOR SHALL NOTIFY THE FOLLOWING UTILITY COMPANIES OR AGENCIES AT LEAST FIVE WORKING DAYS BEFORE STARTING WORK SHOWN ON THESE PLANS:

| | |
|------------------------------|-----------------------------|
| AT&T | 1-800-252-1133 |
| BGE (CONTRACTOR SERVICES) | 410-637-8713 |
| BGE (EMERGENCY) | 410-685-0123 |
| BUREAU OF UTILITIES | 410-313-4900 |
| COLONIAL PIPELINE CO. | 410-795-1390 |
| MISS UTILITY | 1-800-237-7777 |
| STATE HIGHWAY ADMINISTRATION | 410-531-5633 |
| VERIZON | 1-800-743-0033/410-224-9210 |
 - TREES AND SHRUBS ARE TO BE PROTECTED FROM DAMAGE TO THE MAXIMUM EXTENT. TREES AND SHRUBS LOCATED WITHIN THE CONSTRUCTION STRIP ARE NOT TO BE REMOVED OR DAMAGED BY THE CONTRACTOR.
 - THE CONTRACTOR SHALL REMOVE TREES, STUMPS AND ROOTS ALONG LINE OF EXCAVATION. PAYMENT FOR SUCH REMOVAL SHALL BE INCLUDED IN THE UNIT PRICE BID FOR CONSTRUCTION OF THE MAIN.
 - THE CONTRACTOR SHALL NOTIFY THE BUREAU OF HIGHWAYS, HOWARD COUNTY, AT (410)-313-7450 AT LEAST FIVE WORKING DAYS BEFORE OPEN CUTTING OR BORING/JACKING OF ANY COUNTY ROAD FOR LAYING WATER/SEWER MAINS OR HOUSE CONNECTIONS. THE APPROVAL OF THESE DRAWINGS WILL CONSTITUTE COMPLIANCE WITH DPW REQUIREMENTS PER SECTION 18.114(G) OF THE HOWARD COUNTY CODE.

PART II WATER

- ALL WATER MAINS TO BE D.I.P. CLASS 54 UNLESS OTHERWISE NOTED.
- TOPS OF ALL WATER MAINS SHALL HAVE A MINIMUM OF 3'-6" OF COVER UNLESS OTHERWISE NOTED.
- VALVES ADJACENT TO TEES SHALL BE STRAPPED TO TEES.
- ALL FITTINGS SHALL BE BUTTRESSED OR ANCHORED WITH CONCRETE IN ACCORDANCE WITH STANDARD DETAILS UNLESS OTHERWISE PROVIDED FOR ON THE DRAWINGS.
- FIRE HYDRANTS SHALL BE SET TO THE BURY LINE ELEVATIONS SHOWN ON THE DRAWINGS. ALL FIRE HYDRANTS SHALL BE RESTRAINED AND BUTTRESSED WITH CONCRETE IN ACCORDANCE WITH STANDARD DETAILS FOR CONSTRUCTION. MAGNESIUM ANODES SHALL BE COMPACTED IN ACCORDANCE WITH SECTION 1000 AND SECTION 1005 OF THE STANDARD SPECIFICATIONS.
- THE CONTRACTOR SHALL NOT OPERATE ANY WATER MAIN VALVES ON THE EXISTING WATER SYSTEM.
- TRACER WIRE AND CONTINUITY TEST STATIONS SHALL BE INSTALLED ON ALL DIP AND PVC WATER MAINS IN ACCORDANCE WITH THE HOWARD COUNTY DESIGN MANUAL.
- FOR PVC WATER MAINS, ALL RECORDS FOR THE QUALITY CONTROL AND QUALIFICATION TEST REQUIREMENTS NOTED IN SECTION 5.1 OF THE AWWA STANDARD SPEC FOR PVC PRESSURE PIPE SHALL BE SUBMITTED WITH THE PIPE MATERIAL CERTIFICATIONS OR SHOP DRAWINGS PRIOR TO APPROVAL OF THE MATERIAL FOR USE. THE TEST RECORDS SHALL BE FOR THE PIPE TO BE INSTALLED UNDER THIS CONTRACT. ALL PVC PIPE SHALL CONTAIN MARKINGS TO ALLOW CROSS REFERENCING OF THE PIPE SUPPLIED TO THE TEST RECORDS RECEIVED.
- UNLESS OTHERWISE NOTED ON THE PLANS OR IN THE SPECIFICATIONS, SEVENTEEN (17) POUND SACRIFICIAL ANODES SHALL BE INSTALLED ON ALL VALVES AND METALLIC FITTINGS USED WITH PVC WATER MAINS IN ACCORDANCE WITH VOLUME IV, STANDARD SPECIFICATIONS AND DETAILS FOR CONSTRUCTION. MAGNESIUM ANODES SHALL BE INSTALLED ON ALL VALVES AND DUCTILE IRON FITTINGS INCLUDING RESTRAINTS AND HARNESSES. ZINC ANODES SHALL BE INSTALLED ON ALL STAINLESS STEEL FITTINGS AND SADDLES USED WITH PVC MAINS. ALL TEES USED WITH PVC MAINS SHALL BE DUCTILE IRON.

PART III SEWER

- ALL SEWER MAINS SHALL BE D.I.P. OR P.V.C. UNLESS OTHERWISE NOTED.
- ALL MANHOLES SHALL BE 4'-0" INSIDE DIAMETER UNLESS OTHERWISE NOTED.
- FORCE MAINS SHALL BE D.I.P. ONLY.
- MANHOLES SHOWN WITH 12" AND 16" WALLS ARE FOR BRICK MANHOLES ONLY.
- MANHOLES DESIGNATED W.T. IN PLAN AND PROFILE SHALL HAVE WATER TIGHT FRAME AND COVER. STANDARD DETAIL G5.52, WHERE WATER TIGHT MANHOLE FRAMES AND COVERS ARE USED, SET TOP OF FRAME 1'-6" ABOVE FINISHED GRADE UNLESS OTHERWISE NOTED ON THE DRAWINGS.
- HOUSE(S) WITH THE SYMBOL "C.N.S." INDICATES THAT CELLAR CANNOT BE SERVED.

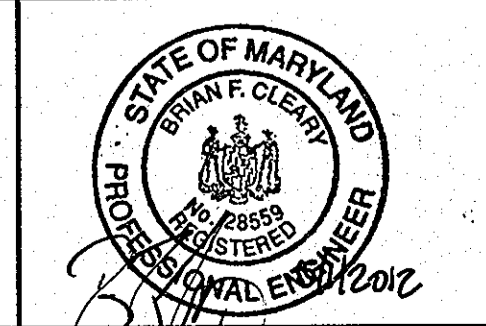
DEPARTMENT OF PUBLIC WORKS
HOWARD COUNTY, MARYLAND

Shirley C. Conn 5/18/12
CHIEF, BUREAU OF UTILITIES DATE

DEPARTMENT OF PLANNING AND ZONING
HOWARD COUNTY, MARYLAND

Michael J. ... 6/14/12
CHIEF, DEVELOPMENT ENGINEERING DIVISION DATE

BENCHMARK ENGINEERING, INC.
2640 BALTIMORE NATIONAL PIKE SUITE 418 A ELLCOTT CITY, MARYLAND 21043
(P) 410-465-8105 (F) 410-465-8644
60 THOMAS JOHNSON DRIVE FREDERICK, MARYLAND 21702
(P) 301-371-5505 (F) 301-371-3506
WWW.BE-ONLINEENGINEERING.COM



| | | | | |
|--------|---------|--|----------|--|
| DES: | DBT/MCR | | | |
| DRAFT: | DBT/MCR | | | |
| CHK: | BFC | KCI 3 AS-BUILT | 5-21-12 | |
| DATE: | 05/2012 | BEI 2 REMOVE NOTE STARTING @ 8.041-C-5.0 3 ARE NOT APPLICABLE | 11-26-12 | |
| | | BEI 1 REVISE PVC WATER QUANTITY TO 2360 C.F. REVISE D.I.P. SEWER TO PVC C900 IN QUANTIFIABLE | 8-8-12 | |
| | | BY NO. | | |

TITLE SHEET
PUBLIC WATER & SEWER MAINS

600 SCALE MAP NO: 35 BLOCK: 23 200 SCALE MAP NO: 136

SIMPSON MILL - PHASE 2
LOTS 19 thru 138

TAX MAP: 35 - BLOCK: 23 - PARCEL: 116 - ZONED: R-SA-8 - ELECTION DISTRICT: 1
TAX MAP: 35 - BLOCK: 23 - PARCEL: 258, 476 - ZONED: POR - ELECTION DISTRICT: 1

CONTRACT NO. 34-4739-D

SCALE:
AS SHOWN

SHEET NO.
1 OF 5

| LOT | ADDRESS | LOCATION DIMENSION 1 | LOCATION DIMENSION 2 |
|-----|-----------------------|----------------------|----------------------|
| 60 | 6802 FLOUR MILL COURT | MAIN TO CLEANOUT | SMH-14 TO CO |
| 61 | 6804 FLOUR MILL COURT | MAIN TO CLEANOUT | SMH-14 TO CO |
| 62 | 6806 FLOUR MILL COURT | MAIN TO CLEANOUT | SMH-14 TO CO |
| 63 | 6808 FLOUR MILL COURT | MAIN TO CLEANOUT | SMH-14 TO CO |
| 64 | 6810 FLOUR MILL COURT | MAIN TO CLEANOUT | SMH-14 TO CO |
| 65 | 6812 FLOUR MILL COURT | MAIN TO CLEANOUT | SMH-21 TO CO |
| 66 | 6814 FLOUR MILL COURT | MAIN TO CLEANOUT | SMH-21 TO CO |
| 67 | 6816 FLOUR MILL COURT | MAIN TO CLEANOUT | SMH-21 TO CO |
| 68 | 6818 FLOUR MILL COURT | MAIN TO CLEANOUT | SMH-21 TO CO |
| 69 | 6820 FLOUR MILL COURT | MAIN TO CLEANOUT | SMH-21 TO CO |
| 70 | 6822 FLOUR MILL COURT | MAIN TO CLEANOUT | SMH-21 TO CO |
| 71 | 6824 FLOUR MILL COURT | MAIN TO CLEANOUT | SMH-14 TO CO |
| 72 | 6826 FLOUR MILL COURT | MAIN TO CLEANOUT | SMH-14 TO CO |
| 73 | 6828 FLOUR MILL COURT | MAIN TO CLEANOUT | SMH-14 TO CO |
| 74 | 6830 FLOUR MILL COURT | MAIN TO CLEANOUT | SMH-14 TO CO |
| 75 | 7842 RIVER ROCK WAY | MAIN TO CLEANOUT | SMH-13 TO CO |
| 76 | 7844 RIVER ROCK WAY | MAIN TO CLEANOUT | SMH-13 TO CO |
| 77 | 7846 RIVER ROCK WAY | MAIN TO CLEANOUT | SMH-13 TO CO |
| 78 | 6704 SAW MILL COURT | MAIN TO CLEANOUT | SMH-22 TO CO |
| 79 | 6706 SAW MILL COURT | MAIN TO CLEANOUT | SMH-22 TO CO |
| 80 | 6708 SAW MILL COURT | MAIN TO CLEANOUT | SMH-22 TO CO |
| 81 | 6710 SAW MILL COURT | MAIN TO CLEANOUT | SMH-22 TO CO |
| 82 | 6712 SAW MILL COURT | MAIN TO CLEANOUT | SMH-22 TO CO |
| 83 | 6714 SAW MILL COURT | MAIN TO CLEANOUT | SMH-22 TO CO |
| 84 | 6716 SAW MILL COURT | MAIN TO CLEANOUT | SMH-22 TO CO |
| 85 | 6718 SAW MILL COURT | MAIN TO CLEANOUT | SMH-22 TO CO |
| 86 | 6720 SAW MILL COURT | MAIN TO CLEANOUT | SMH-22 TO CO |
| 87 | 6722 SAW MILL COURT | MAIN TO CLEANOUT | SMH-22 TO CO |
| 88 | 6724 SAW MILL COURT | MAIN TO CLEANOUT | SMH-22 TO CO |
| 89 | 6726 SAW MILL COURT | MAIN TO CLEANOUT | SMH-22 TO CO |
| 90 | 6728 SAW MILL COURT | MAIN TO CLEANOUT | SMH-22 TO CO |
| 91 | 6730 SAW MILL COURT | MAIN TO CLEANOUT | SMH-22 TO CO |
| 92 | 6732 SAW MILL COURT | MAIN TO CLEANOUT | SMH-22 TO CO |
| 93 | 6734 SAW MILL COURT | MAIN TO CLEANOUT | SMH-22 TO CO |
| 94 | 6736 SAW MILL COURT | MAIN TO CLEANOUT | SMH-22 TO CO |
| 95 | 6738 SAW MILL COURT | MAIN TO CLEANOUT | SMH-22 TO CO |
| 96 | 6740 SAW MILL COURT | MAIN TO CLEANOUT | SMH-22 TO CO |
| 97 | 6742 SAW MILL COURT | MAIN TO CLEANOUT | SMH-22 TO CO |
| 98 | 6744 SAW MILL COURT | MAIN TO CLEANOUT | SMH-22 TO CO |
| 99 | 6746 SAW MILL COURT | MAIN TO CLEANOUT | SMH-22 TO CO |
| 100 | 6748 SAW MILL COURT | MAIN TO CLEANOUT | SMH-22 TO CO |
| 101 | 6750 SAW MILL COURT | MAIN TO CLEANOUT | SMH-22 TO CO |
| 102 | 6752 SAW MILL COURT | MAIN TO CLEANOUT | SMH-22 TO CO |
| 103 | 6754 SAW MILL COURT | MAIN TO CLEANOUT | SMH-22 TO CO |
| 104 | 6756 SAW MILL COURT | MAIN TO CLEANOUT | SMH-22 TO CO |
| 105 | 6758 SAW MILL COURT | MAIN TO CLEANOUT | SMH-22 TO CO |
| 106 | 6760 SAW MILL COURT | MAIN TO CLEANOUT | SMH-22 TO CO |
| 107 | 6762 SAW MILL COURT | MAIN TO CLEANOUT | SMH-22 TO CO |
| 108 | 6764 SAW MILL COURT | MAIN TO CLEANOUT | SMH-22 TO CO |
| 109 | 6766 SAW MILL COURT | MAIN TO CLEANOUT | SMH-22 TO CO |
| 110 | 6768 SAW MILL COURT | MAIN TO CLEANOUT | SMH-22 TO CO |
| 111 | 6770 SAW MILL COURT | MAIN TO CLEANOUT | SMH-22 TO CO |
| 112 | 6772 SAW MILL COURT | MAIN TO CLEANOUT | SMH-22 TO CO |
| 113 | 6774 SAW MILL COURT | MAIN TO CLEANOUT | SMH-22 TO CO |
| 114 | 6776 SAW MILL COURT | MAIN TO CLEANOUT | SMH-22 TO CO |
| 115 | 6778 SAW MILL COURT | MAIN TO CLEANOUT | SMH-22 TO CO |
| 116 | 6780 SAW MILL COURT | MAIN TO CLEANOUT | SMH-22 TO CO |
| 117 | 6782 SAW MILL COURT | MAIN TO CLEANOUT | SMH-22 TO CO |
| 118 | 6784 SAW MILL COURT | MAIN TO CLEANOUT | SMH-22 TO CO |
| 119 | 6786 SAW MILL COURT | MAIN TO CLEANOUT | SMH-22 TO CO |
| 120 | 6788 SAW MILL COURT | MAIN TO CLEANOUT | SMH-22 TO CO |
| 121 | 6790 SAW MILL COURT | MAIN TO CLEANOUT | SMH-22 TO CO |
| 122 | 6792 SAW MILL COURT | MAIN TO CLEANOUT | SMH-22 TO CO |
| 123 | 6794 SAW MILL COURT | MAIN TO CLEANOUT | SMH-22 TO CO |
| 124 | 6796 SAW MILL COURT | MAIN TO CLEANOUT | SMH-22 TO CO |
| 125 | 6798 SAW MILL COURT | MAIN TO CLEANOUT | SMH-22 TO CO |
| 126 | 6800 SAW MILL COURT | MAIN TO CLEANOUT | SMH-22 TO CO |
| 127 | 6802 SAW MILL COURT | MAIN TO CLEANOUT | SMH-22 TO CO |
| 128 | 6804 SAW MILL COURT | MAIN TO CLEANOUT | SMH-22 TO CO |
| 129 | 6806 SAW MILL COURT | MAIN TO CLEANOUT | SMH-22 TO CO |
| 130 | 6808 SAW MILL COURT | MAIN TO CLEANOUT | SMH-22 TO CO |
| 131 | 6810 SAW MILL COURT | MAIN TO CLEANOUT | SMH-22 TO CO |
| 132 | 6812 SAW MILL COURT | MAIN TO CLEANOUT | SMH-22 TO CO |
| 133 | 6814 SAW MILL COURT | MAIN TO CLEANOUT | SMH-22 TO CO |
| 134 | 6816 SAW MILL COURT | MAIN TO CLEANOUT | SMH-22 TO CO |
| 135 | 6818 SAW MILL COURT | MAIN TO CLEANOUT | SMH-22 TO CO |
| 136 | 6820 SAW MILL COURT | MAIN TO CLEANOUT | SMH-22 TO CO |
| 137 | 6822 SAW MILL COURT | MAIN TO CLEANOUT | SMH-22 TO CO |
| 138 | 6824 SAW MILL COURT | MAIN TO CLEANOUT | SMH-22 TO CO |
| 139 | 6826 SAW MILL COURT | MAIN TO CLEANOUT | SMH-22 TO CO |
| 140 | 6828 SAW MILL COURT | MAIN TO CLEANOUT | SMH-22 TO CO |
| 141 | 6830 SAW MILL COURT | MAIN TO CLEANOUT | SMH-22 TO CO |

| Lot | Dimension | Road | Lot | Dimension | Road |
|-----|-----------|------------------|-----|-----------|----------------|
| 60 | 29.00 | Flour Mill Court | 100 | 29.00 | River Rock Way |
| 61 | 24.00 | Flour Mill Court | 101 | 24.00 | River Rock Way |
| 62 | 24.00 | Flour Mill Court | 102 | 24.00 | River Rock Way |
| 63 | 24.00 | Flour Mill Court | 103 | 24.00 | River Rock Way |
| 64 | 24.00 | Flour Mill Court | 104 | 24.00 | River Rock Way |
| 65 | 24.00 | Flour Mill Court | 105 | 24.00 | River Rock Way |
| 66 | 24.00 | Flour Mill Court | 106 | 24.00 | River Rock Way |
| 67 | 29.00 | Flour Mill Court | 107 | 29.00 | River Rock Way |
| 68 | 24.00 | Flour Mill Court | 108 | 29.00 | River Rock Way |
| 69 | 24.00 | Flour Mill Court | 109 | 24.00 | River Rock Way |
| 70 | 24.00 | Flour Mill Court | 110 | 24.00 | River Rock Way |
| 71 | 24.00 | Flour Mill Court | 111 | 24.00 | River Rock Way |
| 72 | 24.00 | Flour Mill Court | 112 | 24.00 | River Rock Way |
| 73 | 24.00 | Flour Mill Court | 113 | 24.00 | River Rock Way |
| 74 | 29.00 | Flour Mill Court | 114 | 29.00 | River Rock Way |
| 75 | 29.00 | River Rock Way | 115 | 29.00 | River Rock Way |
| 76 | 24.00 | River Rock Way | 116 | 24.00 | River Rock Way |
| 77 | 29.00 | River Rock Way | 117 | 24.00 | River Rock Way |
| 78 | 29.00 | Saw Mill Court | 118 | 24.00 | River Rock Way |
| 79 | 24.00 | Saw Mill Court | 119 | 29.00 | River Rock Way |
| 80 | 24.00 | Saw Mill Court | 120 | 29.00 | River Rock Way |
| 81 | 24.00 | Saw Mill Court | 121 | 24.00 | River Rock Way |
| 82 | 29.00 | Saw Mill Court | 122 | 24.00 | River Rock Way |
| 83 | 29.00 | Saw Mill Court | 123 | 24.00 | River Rock Way |
| 84 | 24.00 | Saw Mill Court | 124 | 24.00 | River Rock Way |
| 85 | 24.00 | Saw Mill Court | 125 | 29.00 | River Rock Way |
| 86 | 24.00 | Saw Mill Court | 126 | 29.00 | River Rock Way |
| 87 | 29.00 | Saw Mill Court | 127 | 20.00 | River Rock Way |
| 88 | 29.00 | River Rock Way | 128 | 20.00 | River Rock Way |
| 89 | 24.00 | River Rock Way | 129 | 20.00 | River Rock Way |
| 90 | 24.00 | River Rock Way | 130 | 20.00 | River Rock Way |
| 91 | 24.00 | River Rock Way | 131 | 29.00 | River Rock Way |
| 92 | 24.00 | River Rock Way | 132 | 25.00 | River Rock Way |
| 93 | 29.00 | River Rock Way | 133 | 20.00 | River Rock Way |
| 94 | 29.00 | River Rock Way | 134 | 20.00 | River Rock Way |
| 95 | 24.00 | River Rock Way | 135 | 20.00 | River Rock Way |
| 96 | 24.00 | River Rock Way | 136 | 20.00 | River Rock Way |
| 97 | 24.00 | River Rock Way | 137 | 20.00 | River Rock Way |
| 98 | 24.00 | River Rock Way | 138 | 25.00 | River Rock Way |
| 99 | 29.00 | River Rock Way | | | |

DEPARTMENT OF PUBLIC WORKS
HOWARD COUNTY, MARYLAND

DEPARTMENT OF PLANNING AND ZONING
HOWARD COUNTY, MARYLAND

BENCHMARK ENGINEERING, INC.
2480 BALTIMORE NATIONAL PIKE & SUITE 418 & ELLICOTT CITY, MARYLAND 21104
(P) 410-405-0105 (F) 410-405-0644
60 THOMAS JOHNSON DRIVE & FREDERICK, MARYLAND 21702
(P) 301-371-3505 (F) 301-371-3508
WWW.BCV-ENGINEERING.COM

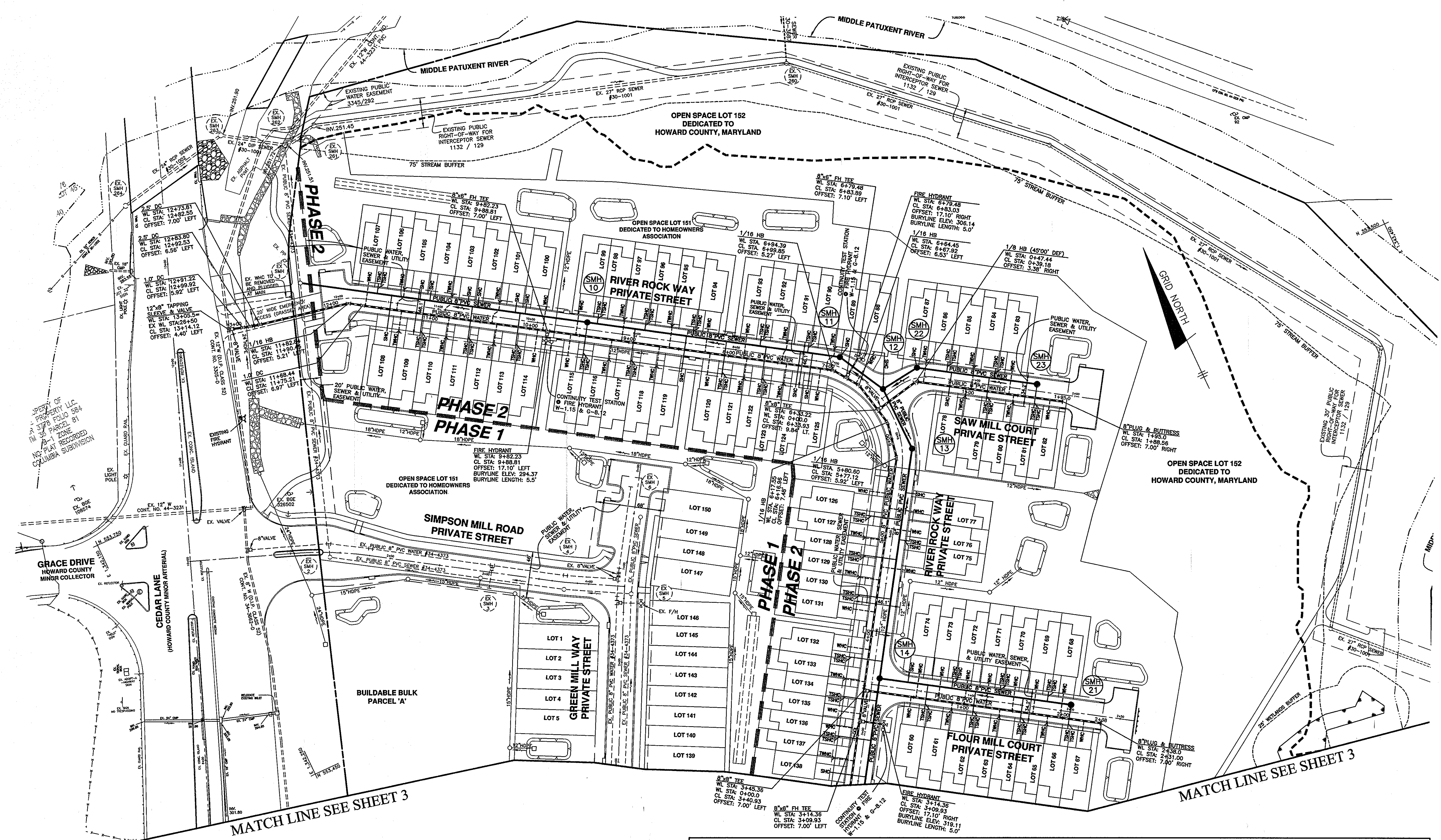
Professional Certification. I hereby certify that these documents were prepared or approved by me, and that I am a duly licensed professional engineer under the laws of the State of Maryland, License No. 28559, Expiration Date: 7-22-2013.

DES: DBT/MCR
DRAFT: DBT/MCR
CHK: BFC
DATE: 06/2012

OWNER/DEVELOPER:
SIMPSON MILL, LLC
P.O. BOX 417
ELLICOTT CITY, MARYLAND 21041
410-465-4244

DATE: 06/2012

DATE: 06/2012



| MANHOLE | LOCATION | RIM ELEVATION | HO. CO. STD |
|---------|---|---------------|-------------|
| 10 | CL STA. 9+50.60 OFFS. 7.00' RIGHT (RIVER ROCK WAY) | 295.00 | G-5.11 |
| 11 | CL STA. 6+97.97 OFFS. 9.41' RIGHT (RIVER ROCK WAY) | 304.84 | G-5.11 |
| 12 | CL STA. 6+47.82 OFFS. 7.00' RIGHT (RIVER ROCK WAY) | 307.34 | S-1.32 'B' |
| 13 | CL STA. 5+85.38 OFFS. 10.01' RIGHT (RIVER ROCK WAY) | 310.34 | G-5.11 |
| 14 | CL STA. 3+54.93 OFFS. 7.00' RIGHT (RIVER ROCK WAY) | 317.65 | S-1.32 'A' |
| 21 | CL STA. 1+99.50 OFFS. 7.00' LEFT (FLOUR MILL COURT) | 309.98 | S-1.31 |
| 22 | CL STA. 0+43.03 OFFS. 10.04' LEFT (SAW MILL COURT) | 306.35 | G-5.11 |
| 23 | CL STA. 1+60.96 OFFS. 7.00' LEFT (SAW MILL COURT) | 302.90 | S-1.31 |

| LOT | ADDRESS | LOCATION DIMENSION 1 | LOCATION DIMENSION 2 | LOT | ADDRESS | LOCATION DIMENSION 1 | LOCATION DIMENSION 2 |
|-----|-----------------------|----------------------|----------------------|-----|---------------------|----------------------|----------------------|
| 60 | 6802 FLOUR MILL COURT | MAIN TO METER | SMH-14 TO WPT | 124 | 7855 RIVER ROCK WAY | MAIN TO METER | SMH-11 TO WPT |
| 61 | 6804 FLOUR MILL COURT | MAIN TO METER | SMH-14 TO WPT | 125 | 7853 RIVER ROCK WAY | MAIN TO METER | SMH-11 TO WPT |
| 62 | 6806 FLOUR MILL COURT | MAIN TO METER | SMH-14 TO WPT | 126 | 7847 RIVER ROCK WAY | MAIN TO METER | SMH-15 TO WPT |
| 63 | 6808 FLOUR MILL COURT | MAIN TO METER | SMH-14 TO WPT | 127 | 7845 RIVER ROCK WAY | MAIN TO METER | SMH-15 TO WPT |
| 64 | 6810 FLOUR MILL COURT | MAIN TO METER | SMH-14 TO WPT | 128 | 7843 RIVER ROCK WAY | MAIN TO METER | SMH-15 TO WPT |
| 65 | 6812 FLOUR MILL COURT | MAIN TO METER | SMH-21 TO WPT | 129 | 7841 RIVER ROCK WAY | MAIN TO METER | SMH-15 TO WPT |
| 66 | 6814 FLOUR MILL COURT | MAIN TO METER | SMH-21 TO WPT | 130 | 7839 RIVER ROCK WAY | MAIN TO METER | SMH-15 TO WPT |
| 67 | 6816 FLOUR MILL COURT | MAIN TO METER | SMH-21 TO WPT | 131 | 7837 RIVER ROCK WAY | MAIN TO METER | SMH-15 TO WPT |
| 68 | 6818 FLOUR MILL COURT | MAIN TO METER | SMH-21 TO WPT | 132 | 7835 RIVER ROCK WAY | MAIN TO METER | SMH-15 TO WPT |
| 69 | 6820 FLOUR MILL COURT | MAIN TO METER | SMH-21 TO WPT | 133 | 7831 RIVER ROCK WAY | MAIN TO METER | SMH-15 TO WPT |
| 70 | 6822 FLOUR MILL COURT | MAIN TO METER | SMH-21 TO WPT | 134 | 7829 RIVER ROCK WAY | MAIN TO METER | SMH-15 TO WPT |
| 71 | 6824 FLOUR MILL COURT | MAIN TO METER | SMH-14 TO WPT | 135 | 7827 RIVER ROCK WAY | MAIN TO METER | SMH-15 TO WPT |
| 72 | 6826 FLOUR MILL COURT | MAIN TO METER | SMH-14 TO WPT | 136 | 7825 RIVER ROCK WAY | MAIN TO METER | SMH-15 TO WPT |
| 73 | 6828 FLOUR MILL COURT | MAIN TO METER | SMH-14 TO WPT | 137 | 7823 RIVER ROCK WAY | MAIN TO METER | SMH-15 TO WPT |
| 74 | 6830 FLOUR MILL COURT | MAIN TO METER | SMH-14 TO WPT | 138 | 7821 RIVER ROCK WAY | MAIN TO METER | SMH-15 TO WPT |
| 75 | 7842 RIVER ROCK WAY | MAIN TO METER | SMH-13 TO WPT | | | | |
| 76 | 6704 SAW MILL COURT | MAIN TO METER | SMH-22 TO WPT | | | | |
| 77 | 6706 SAW MILL COURT | MAIN TO METER | SMH-22 TO WPT | | | | |
| 78 | 6708 SAW MILL COURT | MAIN TO METER | SMH-22 TO WPT | | | | |
| 79 | 6710 SAW MILL COURT | MAIN TO METER | SMH-22 TO WPT | | | | |
| 80 | 6712 SAW MILL COURT | MAIN TO METER | SMH-22 TO WPT | | | | |
| 81 | 6714 SAW MILL COURT | MAIN TO METER | SMH-22 TO WPT | | | | |
| 82 | 6716 SAW MILL COURT | MAIN TO METER | SMH-22 TO WPT | | | | |
| 83 | 6718 SAW MILL COURT | MAIN TO METER | SMH-22 TO WPT | | | | |
| 84 | 6720 SAW MILL COURT | MAIN TO METER | SMH-22 TO WPT | | | | |
| 85 | 6722 SAW MILL COURT | MAIN TO METER | SMH-22 TO WPT | | | | |
| 86 | 6724 SAW MILL COURT | MAIN TO METER | SMH-22 TO WPT | | | | |
| 87 | 6726 SAW MILL COURT | MAIN TO METER | SMH-22 TO WPT | | | | |
| 88 | 6728 SAW MILL COURT | MAIN TO METER | SMH-22 TO WPT | | | | |
| 89 | 6730 SAW MILL COURT | MAIN TO METER | SMH-22 TO WPT | | | | |
| 90 | 6732 SAW MILL COURT | MAIN TO METER | SMH-22 TO WPT | | | | |
| 91 | 6734 SAW MILL COURT | MAIN TO METER | SMH-22 TO WPT | | | | |

PLAN VIEW
PUBLIC WATER & SEWER MAINS

SIMPSON MILL - PHASE 2
LOTS 19 thru 138

TAX MAP: 35 - BLOCK: 23 - PARCEL: 116 - ZONED: R-SA-8 - ELECTION DISTRICT: 1
TAX MAP: 35 - BLOCK: 23 - PARCEL: 258, 476 - ZONED: POR - ELECTION DISTRICT: 1

SCALE:
1" = 50'

SHEET NO.
2 OF 5

DATE: 06/2012

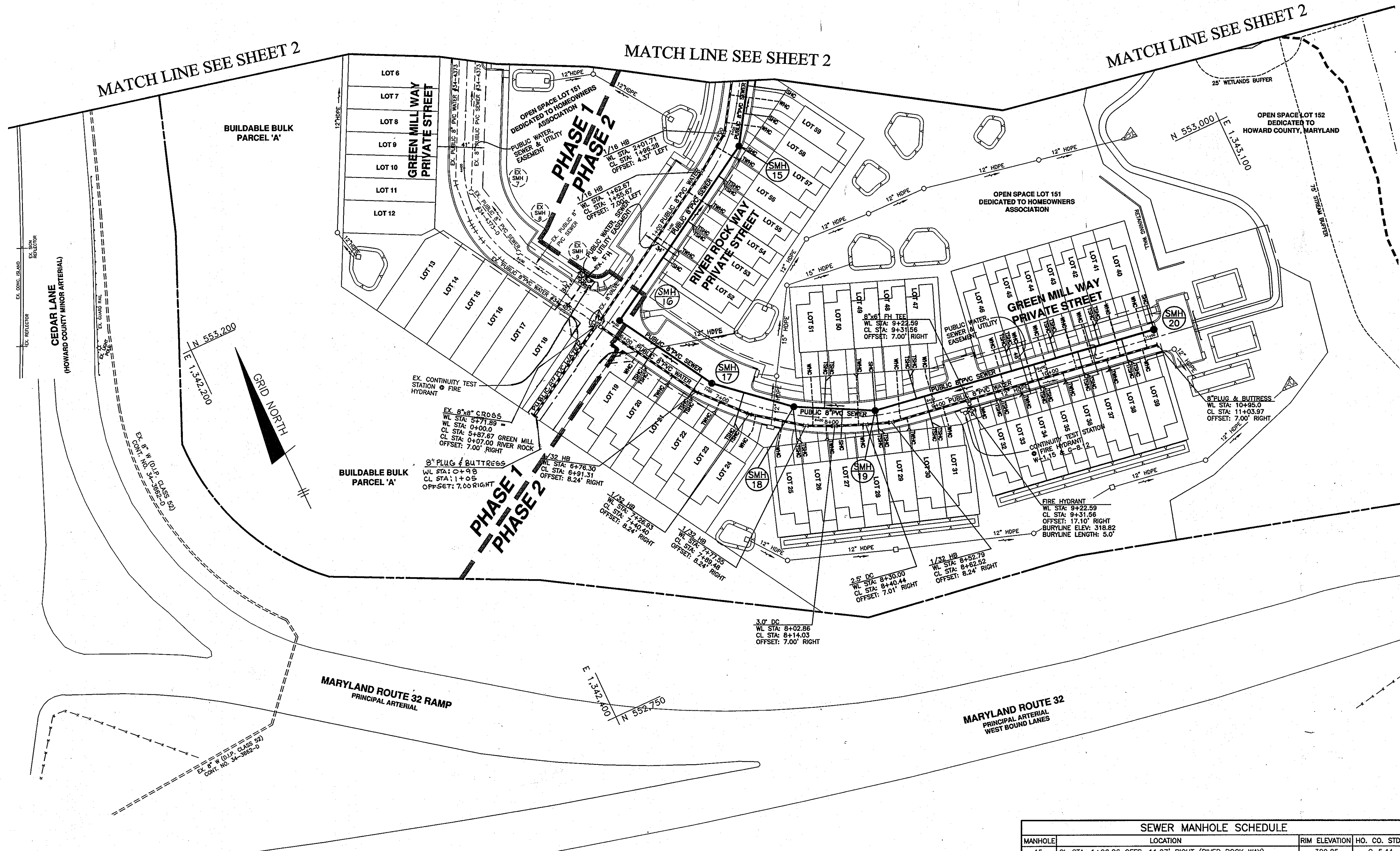
DATE: 06/2012

DATE: 06/2012

| LOT | ADDRESS | LOCATION DIMENSION 1 | LOCATION DIMENSION 2 |
|-----|----------------|----------------------|----------------------|
| 19 | GREEN MILL WAY | MAIN TO WVA 4 | SMH-16 TO WVA 140 |
| 20 | GREEN MILL WAY | MAIN TO WVA 11 | SMH-17 TO WVA 38 |
| 21 | GREEN MILL WAY | MAIN TO WVA 11 | SMH-17 TO WVA 38 |
| 22 | GREEN MILL WAY | MAIN TO WVA 11 | SMH-17 TO WVA 77 |
| 23 | GREEN MILL WAY | MAIN TO WVA 11 | SMH-17 TO WVA 77 |
| 24 | GREEN MILL WAY | MAIN TO WVA 11 | SMH-18 TO WVA 50 |
| 25 | GREEN MILL WAY | MAIN TO WVA 12 | SMH-18 TO WVA 38 |
| 26 | GREEN MILL WAY | MAIN TO WVA 12 | SMH-18 TO WVA 43 |
| 27 | GREEN MILL WAY | MAIN TO WVA 12 | SMH-18 TO WVA 43 |
| 28 | GREEN MILL WAY | MAIN TO WVA 12 | SMH-19 TO WVA 74 |
| 29 | GREEN MILL WAY | MAIN TO WVA 12 | SMH-19 TO WVA 34 |
| 30 | GREEN MILL WAY | MAIN TO WVA 12 | SMH-19 TO WVA 34 |
| 31 | GREEN MILL WAY | MAIN TO WVA 13 | EHT TO WVA 23 |
| 32 | GREEN MILL WAY | MAIN TO WVA 13 | EHT TO WVA 9 |
| 33 | GREEN MILL WAY | MAIN TO WVA 13 | EHT TO WVA 47 |
| 34 | GREEN MILL WAY | MAIN TO WVA 13 | EHT TO WVA 47 |
| 35 | GREEN MILL WAY | MAIN TO WVA 13 | EHT TO WVA 47 |
| 36 | GREEN MILL WAY | MAIN TO WVA 13 | EHT TO WVA 87 |
| 37 | GREEN MILL WAY | MAIN TO WVA 13 | SMH-20 TO WVA 51 |
| 38 | GREEN MILL WAY | MAIN TO WVA 13 | SMH-20 TO WVA 51 |
| 39 | GREEN MILL WAY | MAIN TO WVA 13 | SMH-20 TO WVA 77 |
| 40 | GREEN MILL WAY | MAIN TO WVA 13 | SMH-20 TO WVA 26 |
| 41 | GREEN MILL WAY | MAIN TO WVA 13 | SMH-20 TO WVA 42 |
| 42 | GREEN MILL WAY | MAIN TO WVA 13 | SMH-20 TO WVA 63 |
| 43 | GREEN MILL WAY | MAIN TO WVA 13 | SMH-20 TO WVA 63 |
| 44 | GREEN MILL WAY | MAIN TO WVA 13 | EHT TO WVA 86 |
| 45 | GREEN MILL WAY | MAIN TO WVA 13 | EHT TO WVA 74 |
| 46 | GREEN MILL WAY | MAIN TO WVA 13 | EHT TO WVA 51 |
| 47 | GREEN MILL WAY | MAIN TO WVA 13 | EHT TO WVA 51 |
| 48 | GREEN MILL WAY | MAIN TO WVA 13 | SMH-19 TO WVA 41 |
| 49 | GREEN MILL WAY | MAIN TO WVA 13 | SMH-19 TO WVA 32 |
| 50 | GREEN MILL WAY | MAIN TO WVA 13 | SMH-19 TO WVA 32 |
| 51 | GREEN MILL WAY | MAIN TO WVA 13 | SMH-19 TO WVA 74 |
| 52 | GREEN MILL WAY | MAIN TO WVA 13 | SMH-19 TO WVA 74 |
| 53 | RIVER ROCK WAY | MAIN TO WVA 24 | SMH-16 TO WVA 50 |
| 54 | RIVER ROCK WAY | MAIN TO WVA 24 | SMH-16 TO WVA 50 |
| 55 | RIVER ROCK WAY | MAIN TO WVA 24 | SMH-16 TO WVA 50 |
| 56 | RIVER ROCK WAY | MAIN TO WVA 24 | SMH-16 TO WVA 13 |
| 57 | RIVER ROCK WAY | MAIN TO WVA 24 | SMH-16 TO WVA 13 |
| 58 | RIVER ROCK WAY | MAIN TO WVA 24 | SMH-16 TO WVA 13 |
| 59 | RIVER ROCK WAY | MAIN TO WVA 24 | SMH-16 TO WVA 13 |

| LOT | ADDRESS | LOCATION DIMENSION 1 | LOCATION DIMENSION 2 |
|-----|----------------|----------------------|----------------------|
| 19 | GREEN MILL WAY | MAIN TO CLEANOUT 22 | SMH-16 TO CO 148 |
| 20 | GREEN MILL WAY | MAIN TO CLEANOUT 23 | SMH-16 TO CO 29 |
| 21 | GREEN MILL WAY | MAIN TO CLEANOUT 24 | SMH-17 TO CO 79 |
| 22 | GREEN MILL WAY | MAIN TO CLEANOUT 24 | SMH-17 TO CO 79 |
| 23 | GREEN MILL WAY | MAIN TO CLEANOUT 24 | SMH-17 TO CO 79 |
| 24 | GREEN MILL WAY | MAIN TO CLEANOUT 24 | SMH-17 TO CO 50 |
| 25 | GREEN MILL WAY | MAIN TO CLEANOUT 24 | SMH-17 TO CO 93 |
| 26 | GREEN MILL WAY | MAIN TO CLEANOUT 24 | SMH-17 TO CO 100 |
| 27 | GREEN MILL WAY | MAIN TO CLEANOUT 24 | SMH-18 TO CO 51 |
| 28 | GREEN MILL WAY | MAIN TO CLEANOUT 24 | SMH-18 TO CO 16 |
| 29 | GREEN MILL WAY | MAIN TO CLEANOUT 24 | SMH-18 TO CO 63 |
| 30 | GREEN MILL WAY | MAIN TO CLEANOUT 24 | SMH-18 TO CO 53 |
| 31 | GREEN MILL WAY | MAIN TO CLEANOUT 24 | SMH-18 TO CO 24 |
| 32 | GREEN MILL WAY | MAIN TO CLEANOUT 24 | EHT TO CO 24 |
| 33 | GREEN MILL WAY | MAIN TO CLEANOUT 24 | EHT TO CO 31 |
| 34 | GREEN MILL WAY | MAIN TO CLEANOUT 24 | EHT TO CO 67 |
| 35 | GREEN MILL WAY | MAIN TO CLEANOUT 24 | EHT TO CO 71 |
| 36 | GREEN MILL WAY | MAIN TO CLEANOUT 24 | SMH-20 TO CO 74 |
| 37 | GREEN MILL WAY | MAIN TO CLEANOUT 24 | SMH-20 TO CO 65 |
| 38 | GREEN MILL WAY | MAIN TO CLEANOUT 24 | SMH-20 TO CO 42 |
| 39 | GREEN MILL WAY | MAIN TO CLEANOUT 24 | SMH-20 TO CO 83 |
| 40 | GREEN MILL WAY | MAIN TO CLEANOUT 24 | SMH-20 TO CO 83 |
| 41 | GREEN MILL WAY | MAIN TO CLEANOUT 24 | SMH-20 TO CO 50 |
| 42 | GREEN MILL WAY | MAIN TO CLEANOUT 24 | SMH-20 TO CO 50 |
| 43 | GREEN MILL WAY | MAIN TO CLEANOUT 24 | SMH-20 TO CO 102 |
| 44 | GREEN MILL WAY | MAIN TO CLEANOUT 24 | EHT TO CO 102 |
| 45 | GREEN MILL WAY | MAIN TO CLEANOUT 24 | EHT TO CO 68 |
| 46 | GREEN MILL WAY | MAIN TO CLEANOUT 24 | EHT TO CO 74 |
| 47 | GREEN MILL WAY | MAIN TO CLEANOUT 24 | SMH-19 TO CO 48 |
| 48 | GREEN MILL WAY | MAIN TO CLEANOUT 24 | SMH-19 TO CO 45 |
| 49 | GREEN MILL WAY | MAIN TO CLEANOUT 24 | SMH-19 TO CO 75 |
| 50 | GREEN MILL WAY | MAIN TO CLEANOUT 24 | SMH-19 TO CO 47 |
| 51 | GREEN MILL WAY | MAIN TO CLEANOUT 24 | SMH-19 TO CO 47 |
| 52 | RIVER ROCK WAY | MAIN TO CLEANOUT 1 | SMH-16 TO CO 64 |
| 53 | RIVER ROCK WAY | MAIN TO CLEANOUT 1 | SMH-16 TO CO 64 |
| 54 | RIVER ROCK WAY | MAIN TO CLEANOUT 1 | SMH-16 TO CO 77 |
| 55 | RIVER ROCK WAY | MAIN TO CLEANOUT 1 | SMH-16 TO CO 34 |
| 56 | RIVER ROCK WAY | MAIN TO CLEANOUT 1 | SMH-16 TO CO 32 |
| 57 | RIVER ROCK WAY | MAIN TO CLEANOUT 1 | EHT TO CO 125 |
| 58 | RIVER ROCK WAY | MAIN TO CLEANOUT 1 | SMH-15 TO CO 44 |
| 59 | RIVER ROCK WAY | MAIN TO CLEANOUT 1 | SMH-15 TO CO 63 |

| Lot | Dimension | Road |
|-----|-----------|----------------|
| 19 | 29.00 | Green Mill Way |
| 20 | 24.00 | Green Mill Way |
| 21 | 24.00 | Green Mill Way |
| 22 | 24.00 | Green Mill Way |
| 23 | 24.00 | Green Mill Way |
| 24 | 29.00 | Green Mill Way |
| 25 | 29.00 | Green Mill Way |
| 26 | 24.00 | Green Mill Way |
| 27 | 24.00 | Green Mill Way |
| 28 | 24.00 | Green Mill Way |
| 29 | 24.00 | Green Mill Way |
| 30 | 24.00 | Green Mill Way |
| 31 | 22.99 | Green Mill Way |
| 32 | 29.00 | Green Mill Way |
| 33 | 20.00 | Green Mill Way |
| 34 | 20.00 | Green Mill Way |
| 35 | 20.00 | Green Mill Way |
| 36 | 20.00 | Green Mill Way |
| 37 | 20.00 | Green Mill Way |
| 38 | 20.00 | Green Mill Way |
| 39 | 29.00 | Green Mill Way |
| 40 | 29.00 | Green Mill Way |
| 41 | 20.00 | Green Mill Way |
| 42 | 20.00 | Green Mill Way |
| 43 | 20.00 | Green Mill Way |
| 44 | 20.00 | Green Mill Way |
| 45 | 20.00 | Green Mill Way |
| 46 | 29.00 | Green Mill Way |
| 47 | 29.00 | Green Mill Way |
| 48 | 24.00 | Green Mill Way |
| 49 | 24.00 | Green Mill Way |
| 50 | 24.00 | Green Mill Way |
| 51 | 29.00 | Green Mill Way |
| 52 | 29.00 | River Rock Way |
| 53 | 24.00 | River Rock Way |
| 54 | 24.00 | River Rock Way |
| 55 | 24.00 | River Rock Way |
| 56 | 24.00 | River Rock Way |
| 57 | 24.00 | River Rock Way |
| 58 | 24.00 | River Rock Way |
| 59 | 29.00 | River Rock Way |

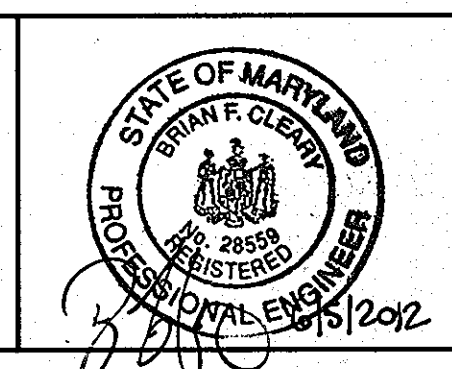


| MANHOLE | LOCATION | RIM ELEVATION | HO. CO. STD. |
|---------|---|---------------|--------------|
| 15 | CL STA. 1+90.26 OFFS. 11.27' RIGHT (RIVER ROCK WAY) | 320.85 | G-5.11 |
| 16 | CL STA. 6+01.67 OFFS. 7.00' LEFT (GREEN MILL WAY) | 324.77 | G-5.11 |
| 17 | CL STA. 7+00.00 OFFS. 4.84' LEFT (GREEN MILL WAY) | 322.88 | G-5.11 |
| 18 | CL STA. 7+76.92 OFFS. 7.00' LEFT (GREEN MILL WAY) | 321.28 | G-5.11 |
| 19 | CL STA. 8+50.00 OFFS. 4.30' LEFT (GREEN MILL WAY) | 319.90 | G-5.11 |
| 20 | CL STA. 11+04.65 OFFS. 7.00' LEFT (GREEN MILL WAY) | 314.69 | S-1.31 |

OWNER/DEVELOPER:
 SIMPSON MILL, LLC
 P.O. BOX 417
 ELLICOTT CITY, MARYLAND 21041
 410-465-4244

Professional Certification. I hereby certify that these documents were prepared or approved by me, and that I am a duly licensed professional engineer under the laws of the State of Maryland, License No. 28559, Expiration Date: 7-22-2013.

BENCHMARK ENGINEERING, INC.
 8480 BALTIMORE NATIONAL PIKE & SUITE 418 A ELLICOTT CITY, MARYLAND 21043
 (P) 410-465-5105 (F) 410-465-6544
 80 THOMAS JOHNSON DRIVE & FREDERICK, MARYLAND 21702
 (P) 301-371-3505 (F) 301-371-3506
 WWW.BE-ENGINEERING.COM



| | | | |
|--------|---------|----------------|-----------|
| DES: | DBT/MCR | | |
| DRAFT: | DBT/MCR | | |
| CHK: | BFC | KCI 2 AS-BUILT | 6-22-15 |
| DATE: | 06/2012 | BY NO. | REVISIONS |

PLAN VIEW
 PUBLIC WATER & SEWER MAINS

600 SCALE MAP NO: 35 BLOCK: 23 200 SCALE MAP NO: 136

SIMPSON MILL - PHASE 2
 LOTS 19 thru 150

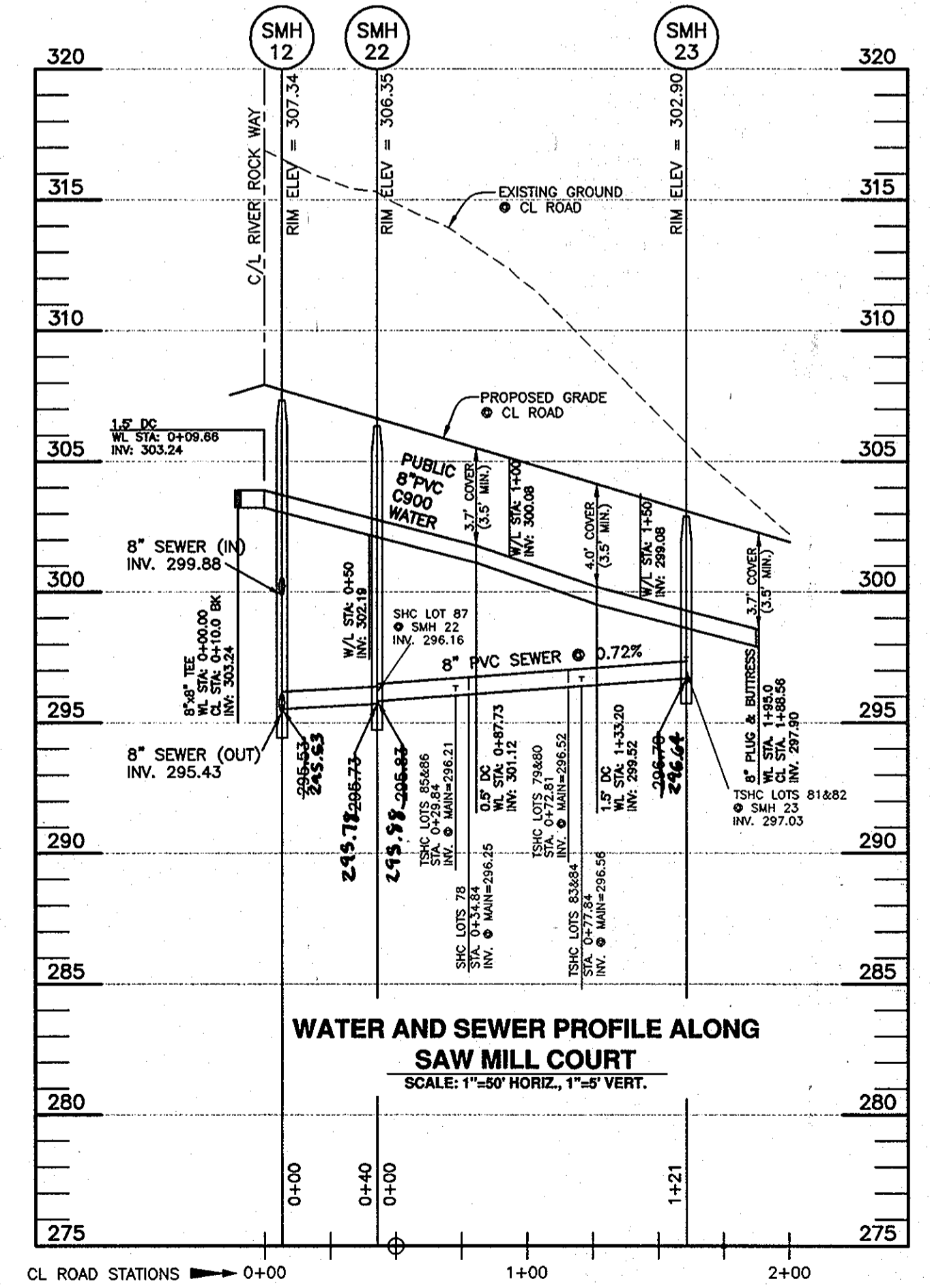
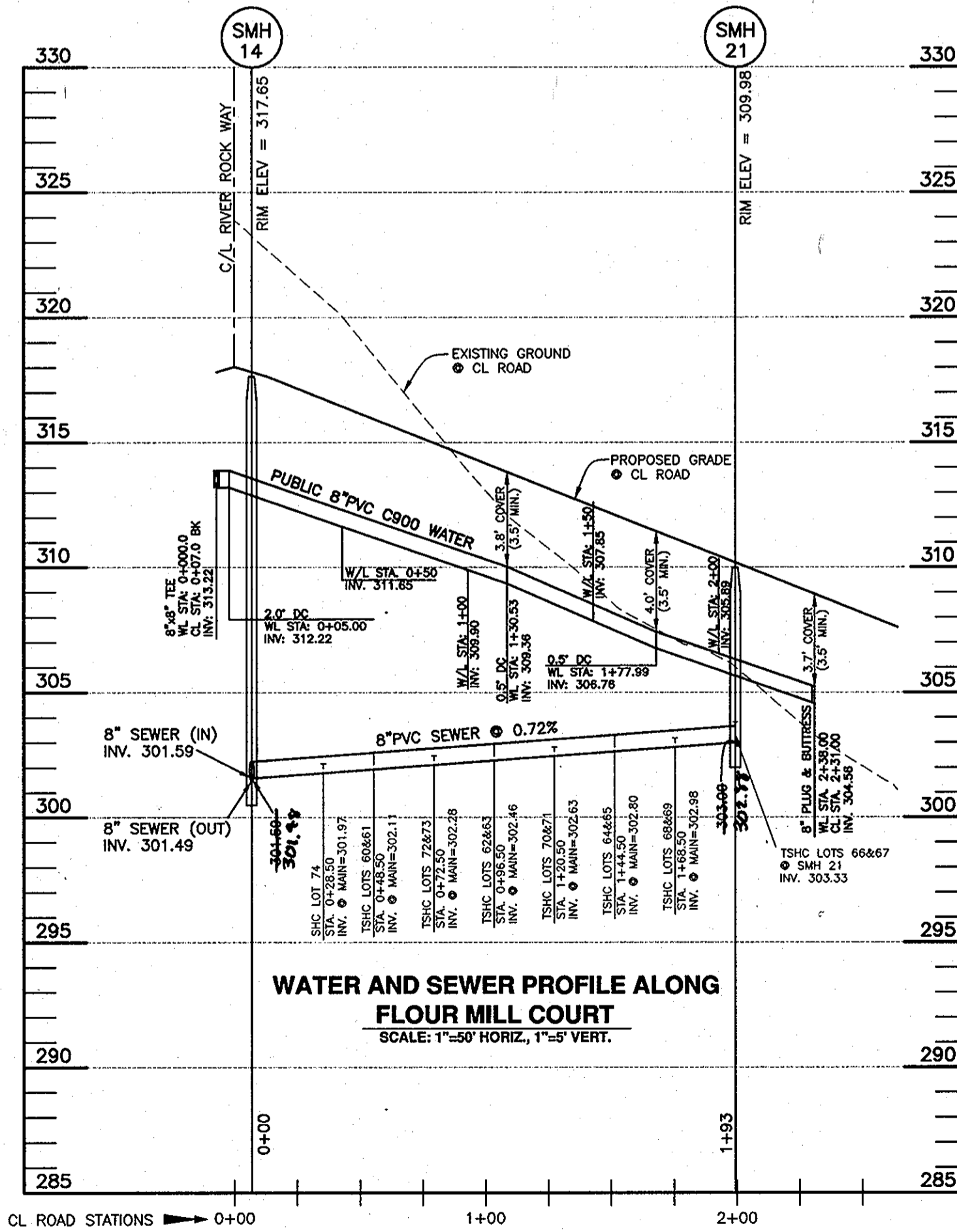
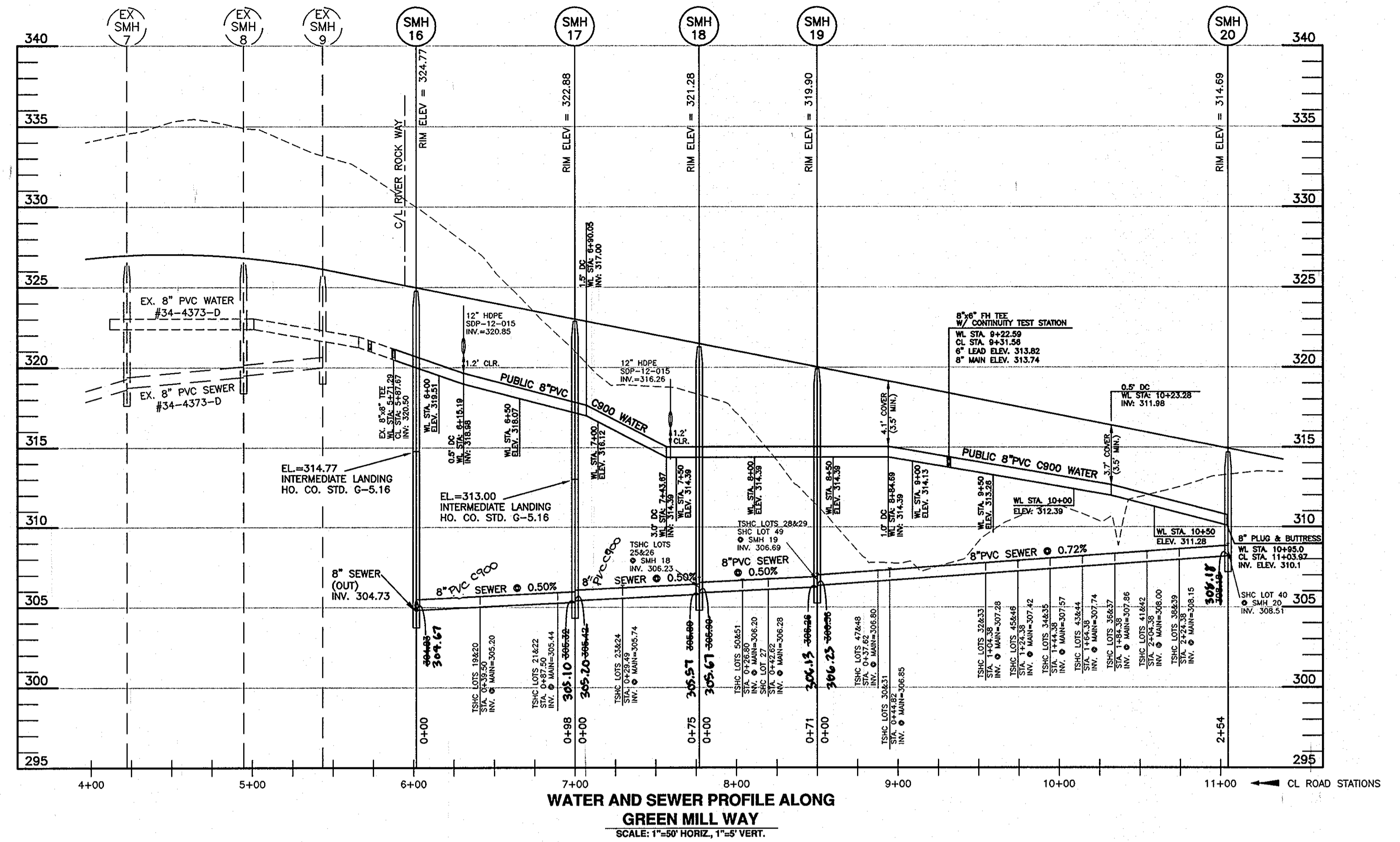
TAX MAP: 35 - BLOCK: 23 - PARCEL: 116 - ZONED: R-SA-8 - ELECTION DISTRICT: 1
 TAX MAP: 35 - BLOCK: 23 - PARCEL: 258, 476 - ZONED: POR - ELECTION DISTRICT: 1

CONTRACT NO. 34-4739-D

SCALE: 1" = 50'
 SHEET NO. 3 OF 5

| Lot Number | S/L Sta. | Invert @ main or manhole | Drop House | SHC Slope | Invert @ PUE | Minimum Cellar | Basement Elevation |
|------------|----------|--------------------------|------------|-----------|--------------|----------------|--------------------|
| 19 | 0+39.50 | 305.20 | no | 2.00% | 305.68 | 303.94 | 325.01 |
| 20 | 0+39.50 | 305.20 | no | 2.00% | 305.68 | 303.94 | 325.01 |
| 21 | 0+87.50 | 305.44 | no | 2.00% | 305.92 | 310.18 | 325.01 |
| 22 | 0+87.50 | 305.44 | no | 2.00% | 305.92 | 310.18 | 324.34 |
| 23 | 0+29.49 | 305.74 | no | 2.00% | 306.38 | 310.64 | 322.67 |
| 24 | 0+29.49 | 305.74 | no | 2.00% | 306.38 | 310.64 | 322.67 |
| 25 | MH-18 | 306.23 | no | 2.00% | 306.87 | 310.97 | 322.82 |
| 26 | MH-18 | 306.23 | no | 2.00% | 306.87 | 310.97 | 322.82 |
| 27 | 0+42.62 | 306.28 | no | 2.00% | 306.80 | 310.9 | 322.15 |
| 28 | MH-19 | 306.69 | no | 2.00% | 307.11 | 311.21 | 321.48 |
| 29 | MH-19 | 306.69 | no | 2.00% | 307.11 | 311.21 | 320.81 |
| 30 | 0+44.82 | 306.85 | no | 2.00% | 307.43 | 311.53 | 320.14 |
| 31 | 0+44.82 | 306.85 | no | 2.00% | 307.43 | 311.53 | 320.14 |
| 32 | 1+04.38 | 307.28 | no | 2.00% | 307.76 | 311.8 | 319.01 |
| 33 | 1+04.38 | 307.28 | no | 2.00% | 307.76 | 311.8 | 319.01 |
| 34 | 1+44.38 | 307.57 | no | 2.00% | 308.05 | 312.09 | 318.34 |
| 35 | 1+44.38 | 307.57 | no | 2.00% | 308.05 | 312.09 | 317.67 |
| 36 | 1+84.38 | 307.86 | no | 2.00% | 308.34 | 312.38 | 317.00 |
| 37 | 1+84.38 | 307.86 | no | 2.00% | 308.34 | 312.38 | 317.00 |
| 38 | 2+24.38 | 308.15 | no | 2.00% | 308.63 | 312.67 | 316.33 |
| 39 | 2+24.38 | 308.15 | no | 2.00% | 308.63 | 312.67 | 316.33 |
| 40 | MH-20 | 308.51 | no | 2.00% | 308.95 | 312.99 | 312.13 |
| 41 | 2+04.38 | 308.00 | no | 2.00% | 308.44 | 312.48 | 312.80 |
| 42 | 2+04.38 | 308.00 | no | 2.00% | 308.44 | 312.48 | 313.47 |
| 43 | 1+64.38 | 307.71 | no | 2.00% | 308.15 | 312.19 | 313.47 |
| 44 | 1+64.38 | 307.71 | no | 2.00% | 308.15 | 312.19 | 314.14 |
| 45 | 1+24.38 | 307.42 | no | 2.00% | 307.86 | 311.9 | 314.81 |
| 46 | 1+24.38 | 307.42 | no | 2.00% | 307.86 | 311.9 | 314.81 |
| 47 | 0+37.62 | 306.80 | no | 2.00% | 307.32 | 311.42 | 316.57 |
| 48 | 0+37.62 | 306.80 | no | 2.00% | 307.32 | 311.42 | 317.24 |
| 49 | MH-19 | 306.69 | no | 2.00% | 307.37 | 311.47 | 317.24 |
| 50 | 0+26.80 | 306.20 | no | 2.00% | 306.76 | 310.86 | 317.91 |
| 51 | 0+26.80 | 306.20 | no | 2.00% | 306.76 | 310.86 | 318.58 |
| 52 | 1+18.16 | 304.56 | no | 2.00% | 304.76 | 308.86 | 319.75 |
| 53 | 0+79.66 | 304.37 | no | 2.00% | 304.57 | 308.67 | 319.75 |
| 54 | 0+79.66 | 304.37 | no | 2.00% | 304.57 | 308.67 | 319.08 |
| 55 | 0+31.66 | 304.13 | no | 2.00% | 304.33 | 308.43 | 319.08 |
| 56 | 0+31.66 | 304.13 | no | 2.00% | 304.33 | 308.43 | 318.41 |
| 57 | MH-15 | 304.13 | no | 2.00% | 304.27 | 308.37 | 317.74 |
| 58 | 1+38.00 | 303.50 | no | 2.00% | 303.94 | 308.04 | 317.74 |
| 59 | 1+13.48 | 303.19 | no | 2.00% | 303.89 | 307.99 | 317.03 |
| 60 | 0+48.50 | 302.11 | no | 2.00% | 302.69 | 306.69 | 317.03 |
| 61 | 0+48.50 | 302.11 | no | 2.00% | 302.69 | 306.69 | 316.36 |
| 62 | 0+96.50 | 302.46 | no | 2.00% | 302.94 | 307.04 | 315.69 |
| 63 | 0+96.50 | 302.46 | no | 2.00% | 302.94 | 307.04 | 314.35 |
| 64 | 1+44.50 | 302.80 | no | 2.00% | 303.28 | 307.38 | 313.68 |
| 65 | 1+44.50 | 302.80 | no | 2.00% | 303.28 | 307.38 | 313.01 |
| 66 | MH-21 | 303.33 | no | 2.00% | 303.81 | 307.91 | 311.67 |
| 67 | MH-21 | 303.33 | no | 2.00% | 303.81 | 307.91 | 311.00 |
| 68 | 1+68.50 | 302.98 | no | 2.00% | 303.18 | 307.28 | 307.14 |
| 69 | 1+68.50 | 302.98 | no | 2.00% | 303.18 | 307.28 | 308.48 |
| 70 | 1+20.50 | 302.63 | no | 2.00% | 302.83 | 306.93 | 309.15 |
| 71 | 1+20.50 | 302.63 | no | 2.00% | 302.83 | 306.93 | 310.49 |
| 72 | 0+72.50 | 302.28 | no | 2.00% | 302.48 | 306.58 | 311.16 |
| 73 | 0+72.50 | 302.28 | no | 2.00% | 302.48 | 306.58 | 311.83 |
| 74 | 0+28.50 | 301.97 | no | 2.00% | 302.17 | 306.27 | 313.17 |

| Lot Number | S/L Sta. | Invert @ main or manhole | Drop House | SHC Slope | Invert @ PUE | Minimum Cellar | Basement Elevation |
|------------|----------|--------------------------|------------|-----------|--------------|----------------|--------------------|
| 75 | 0+92.07 | 300.95 | no | 2.00% | 301.15 | 305.19 | 311.31 |
| 76 | 0+92.07 | 300.95 | no | 2.00% | 301.15 | 305.19 | 310.64 |
| 77 | 0+44.57 | 300.71 | no | 2.00% | 300.91 | 304.95 | 309.97 |
| 78 | 0+34.84 | 296.25 | no | 2.00% | 296.73 | 300.77 | 306.31 |
| 79 | 0+72.81 | 296.52 | no | 2.00% | 297.00 | 301.04 | 305.64 |
| 80 | 0+72.81 | 296.52 | no | 2.00% | 297.00 | 301.04 | 304.97 |
| 81 | MH-23 | 297.03 | no | 2.00% | 297.51 | 301.55 | 304.30 |
| 82 | MH-23 | 297.03 | no | 2.00% | 297.51 | 301.55 | 303.63 |
| 83 | 0+77.84 | 296.56 | no | 2.00% | 296.76 | 300.80 | 300.66 |
| 84 | 0+77.84 | 296.56 | no | 2.00% | 296.76 | 300.80 | 301.33 |
| 85 | 0+29.84 | 296.21 | no | 2.00% | 296.41 | 300.45 | 302.00 |
| 86 | 0+29.84 | 296.21 | no | 2.00% | 296.41 | 300.45 | 302.67 |
| 87 | MH-22 | 296.16 | no | 2.00% | 296.38 | 300.42 | 303.34 |
| 88 | MH-12 | 295.76 | no | 2.00% | 296.48 | 300.52 | 303.13 |
| 89 | MH-11 | 294.89 | no | 2.00% | 295.13 | 299.17 | 302.46 |
| 90 | 2+21.90 | 293.67 | no | 2.00% | 293.87 | 297.91 | 301.12 |
| 91 | 2+21.90 | 293.67 | no | 2.00% | 293.87 | 297.91 | 300.45 |
| 92 | 1+73.90 | 292.23 | no | 2.00% | 292.43 | 296.47 | 299.11 |
| 93 | 1+73.90 | 292.23 | no | 2.00% | 292.43 | 296.47 | 297.77 |
| 94 | 1+05.90 | 290.19 | no | 2.00% | 290.39 | 294.43 | 295.94 |
| 95 | 1+05.90 | 290.19 | no | 2.00% | 290.39 | 294.43 | 295.27 |
| 96 | 0+57.90 | 288.75 | no | 2.00% | 288.95 | 292.99 | 294.60 |
| 97 | 0+57.90 | 288.75 | no | 2.00% | 288.95 | 292.99 | 293.93 |
| 98 | 0+09.90 | 287.31 | no | 2.00% | 287.51 | 291.55 | 292.59 |
| 99 | 0+09.90 | 287.31 | no | 2.00% | 287.51 | 291.55 | 291.92 |
| 100 | 2+31.17 | 285.66 | no | 2.00% | 285.86 | 289.90 | 291.05 |
| 101 | 2+31.17 | 285.66 | no | 2.00% | 285.86 | 289.90 | 290.38 |
| 102 | 1+83.17 | 284.70 | no | 2.00% | 284.90 | 288.94 | 289.71 |
| 103 | 1+83.17 | 284.70 | no | 2.00% | 284.90 | 288.94 | 289.04 |
| 104 | 1+35.17 | 283.74 | no | 2.00% | 283.94 | 287.98 | 288.37 |
| 105 | 1+35.17 | 283.74 | no | 2.00% | 283.94 | 287.98 | 287.70 |
| 106 | 0+87.17 | 282.68 | no | 2.00% | 282.88 | 286.92 | 287.70 |
| 107 | 0+87.17 | 282.68 | no | 2.00% | 282.88 | 286.92 | 287.03 |
| 108 | 0+92.17 | 282.97 | no | 2.00% | 283.69 | 287.73 | 291.79 |
| 109 | 1+25.52 | 283.94 | no | 2.00% | 284.36 | 288.40 | 292.46 |
| 110 | 1+25.52 | 283.94 | no | 2.00% | 284.36 | 288.40 | 293.13 |
| 111 | 1+75.52 | 284.90 | no | 2.00% | 285.32 | 289.36 | 293.80 |
| 112 | 1+75.52 | 284.90 | no | 2.00% | 285.32 | 289.36 | 293.80 |
| 113 | 2+21.52 | 285.56 | no | 2.00% | 286.28 | 290.32 | 294.47 |
| 114 | 2+21.52 | 285.56 | no | 2.00% | 286.28 | 290.32 | 295.14 |
| 115 | MH-10 | 287.17 | no | 2.00% | 287.89 | 291.93 | 296.13 |
| 116 | MH-10 | 287.17 | no | 2.00% | 287.89 | 291.93 | 296.80 |
| 117 | 0+48.26 | 288.46 | no | 2.00% | 289.18 | 293.22 | 298.14 |
| 118 | 0+48.26 | 288.46 | no | 2.00% | 289.18 | 293.22 | 298.81 |
| 119 | 0+99.90 | 290.01 | no | 2.00% | 290.73 | 294.77 | 299.48 |
| 120 | 1+40.26 | 291.22 | no | 2.00% | 291.94 | 295.98 | 301.07 |
| 121 | 1+40.26 | 291.22 | no | 2.00% | 291.94 | 295.98 | 301.74 |
| 122 | 1+80.26 | 292.42 | no | 2.00% | 293.14 | 297.18 | 302.41 |
| 123 | 1+80.26 | 292.42 | no | 2.00% | 293.14 | 297.18 | 303.75 |
| 124 | 2+14.76 | 293.45 | no | 2.00% | 294.17 | 298.21 | 305.12 |
| 125 | 2+26.90 | 293.82 | no | 2.00% | 294.54 | 298.58 | 305.78 |
| 126 | 0+72.37 | 300.95 | no | 2.00% | 301.57 | 305.61 | 314.29 |
| 127 | 0+72.37 | 300.95 | no | 2.00% | 301.57 | 305.61 | 314.96 |
| 128 | 1+12.37 | 301.05 | no | 2.00% | 301.77 | 305.81 | 315.63 |
| 129 | 1+12.37 | 301.05 | no | 2.00% | 301.77 | 305.81 | 316.30 |
| 130 | 1+52.37 | 301.25 | no | 2.00% | 301.97 | 306.01 | 316.97 |
| 131 | 1+52.37 | 301.25 | no | 2.00% | 301.97 | 306.01 | 317.64 |
| 132 | 2+15.37 | 301.57 | no | 2.00% | 302.29 | 306.33 | 317.56 |
| 133 | 2+15.37 | 301.57 | no | 2.00% | 302.29 | 306.33 | 318.23 |
| 134 | 0+22.80 | 302.05 | no | 2.00% | 302.77 | 306.81 | 318.23 |
| 135 | 0+22.80 | 302.05 | no | 2.00% | 302.77 | 306.81 | 318.90 |
| 136 | 0+62.80 | 302.55 | no | 2.00% | 303.27 | 307.31 | 319.57 |
| 137 | 0+62.80 | 302.55 | no | 2.00% | 303.27 | 307.31 | 319.57 |
| 138 | 0+99.79 | 303.03 | no | 2.00% | 303.75 | 307.79 | 320.24 |



OWNER/DEVELOPER:
SIMPSON MILL, LLC
P.O. BOX 417
ELLCOTT CITY, MARYLAND 21041
410-465-4244

Professional Certification. I hereby certify that these documents were prepared or approved by me, and that I am a duly licensed professional engineer under the laws of the State of Maryland. License No. 28559, Expiration Date: 7-22-2013.

DEPARTMENT OF PUBLIC WORKS
HOWARD COUNTY, MARYLAND

DEPARTMENT OF PLANNING AND ZONING
HOWARD COUNTY, MARYLAND

CHIEF, BUREAU OF UTILITIES
DATE: 6/14/12

CHIEF, DEVELOPMENT ENGINEERING DIVISION
DATE: 6/14/12

BENCHMARK ENGINEERING, INC.
4840 BALTIMORE NATIONAL PIKE & SUITE 418 A ELLICOTT CITY, MARYLAND 21043
(P) 410-465-8105 (F) 410-465-6844
60 THOMAS JOHNSON DRIVE FREDERICK, MARYLAND 21702
(P) 301-371-3505 (F) 301-371-3506
WWW.BC-ENGINEERING.COM



| | | | | | |
|---------------|--------|-----------|----------|-----------------------|-----------|
| DES:DBT/MCR | | | | | |
| DRAFT:DBT/MCR | | | | | |
| CHK: BFC | KCI | Z | AS-BUILT | 5-22-13 | |
| DATE: 06/2012 | BY NO. | REVISIONS | DATE | 600 SCALE MAP NO: 35 | BLOCK: 23 |
| | | | | 200 SCALE MAP NO: 136 | |

PROFILES OF PUBLIC WATER & SEWER MAINS

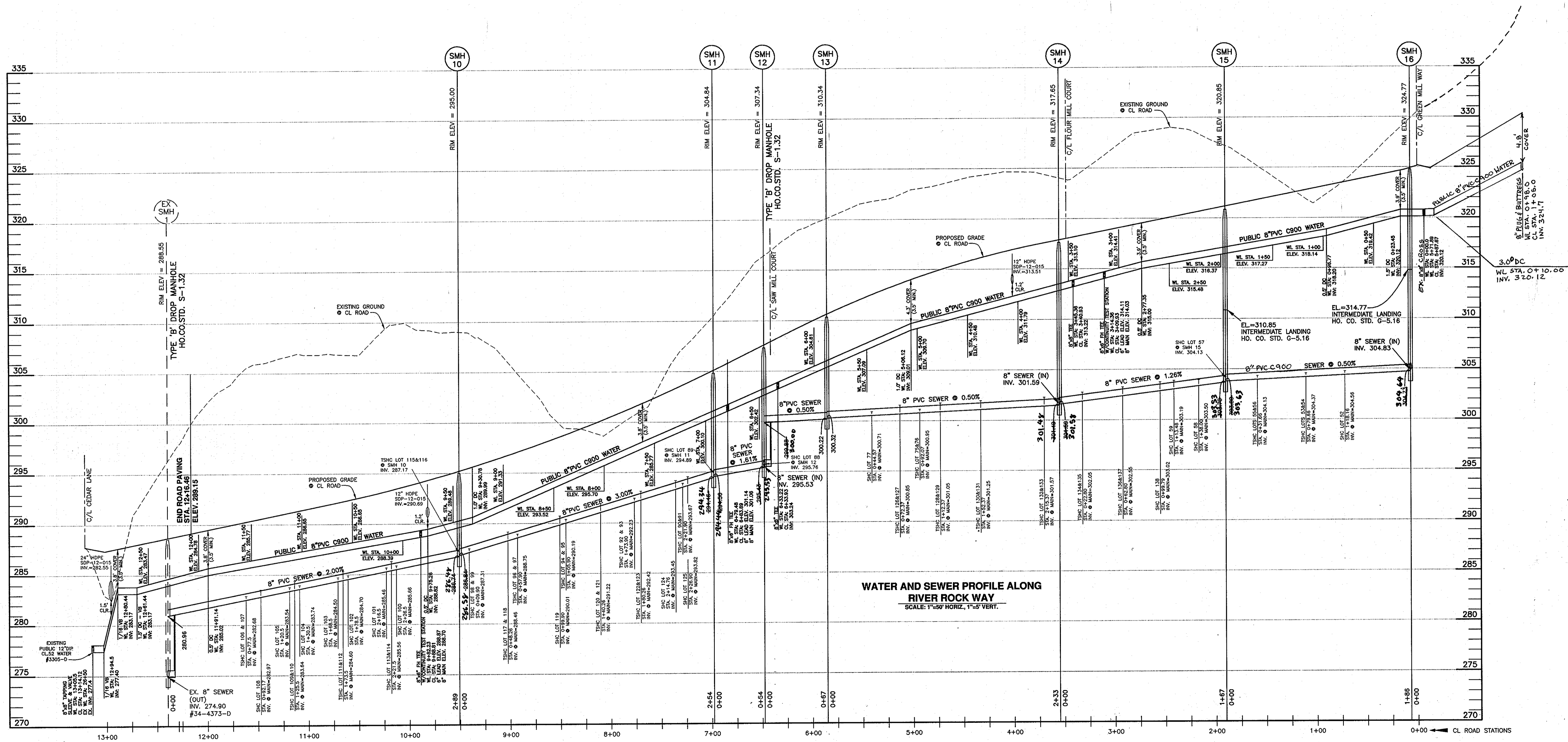
SIMPSON MILL - PHASE 2
LOTS 19 thru 150

TAX MAP: 35 - BLOCK: 23 - PARCEL: 116 - ZONED: R-SA-8 - ELECTION DISTRICT: 1
TAX MAP: 35 - BLOCK: 23 - PARCEL: 258, 476 - ZONED: POR - ELECTION DISTRICT: 1

CONTRACT NO. 34-4739-D

SCALE:
AS SHOWN

SHEET NO.
4 OF 5

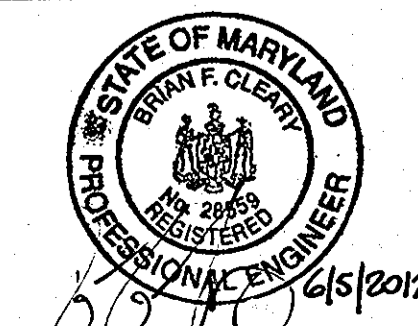


WATER AND SEWER PROFILE ALONG RIVER ROCK WAY
SCALE: 1"=50' HORIZ., 1"=5' VERT.

OWNER/DEVELOPER:
SIMPSON MILL, LLC
P.O. BOX 417
ELLCOTT CITY, MARYLAND 21041
410-465-4244

Professional Certification. I hereby certify that these documents were prepared or approved by me, and that I am a duly licensed professional engineer under the laws of the State of Maryland, License No. 28559, Expiration Date: 7-22-2013.

BENCHMARK
ENGINEERS & LAND SURVEYORS & PLANNERS
ENGINEERING, INC.
8480 BALTIMORE NATIONAL PIKE SUITE 418 ELLCOTT CITY, MARYLAND 21043
(P) 410-465-4155 (F) 410-465-4844
60 THOMAS JOHNSON DRIVE & FREDERICK, MARYLAND 21702
(P) 301-371-3505 (F) 301-371-3508
WWW.BE-CHEMENGINEERING.COM



| | |
|----------------|----------------|
| DES: DBT/MCR | |
| DRAFT: DBT/MCR | |
| CHK: BFC | KCI 2 AS-BUILT |
| DATE: 06/2012 | 8-8-12 |
| BY NO. | REVISIONS |

PROFILES OF PUBLIC WATER & SEWER MAINS
600 SCALE MAP NO: 35 BLOCK: 23 200 SCALE MAP NO: 136

SIMPSON MILL - PHASE 2
LOTS 19 thru 150
TAX MAP: 35 - BLOCK: 23 - PARCEL: 116 - ZONED: R-SA-8 - ELECTION DISTRICT: 1
TAX MAP: 35 - BLOCK: 23 - PARCEL: 258, 476 - ZONED: POR - ELECTION DISTRICT: 1
CONTRACT NO. 34-4739-D

SCALE: AS SHOWN
SHEET NO. 5 OF 5

DEPARTMENT OF PUBLIC WORKS
HOWARD COUNTY, MARYLAND
Shirley C. Cline
CHIEF, BUREAU OF UTILITIES
6/14/12

DEPARTMENT OF PLANNING AND ZONING
HOWARD COUNTY, MARYLAND
M. G. ...
CHIEF, DEVELOPMENT ENGINEERING DIVISION
6/14/12