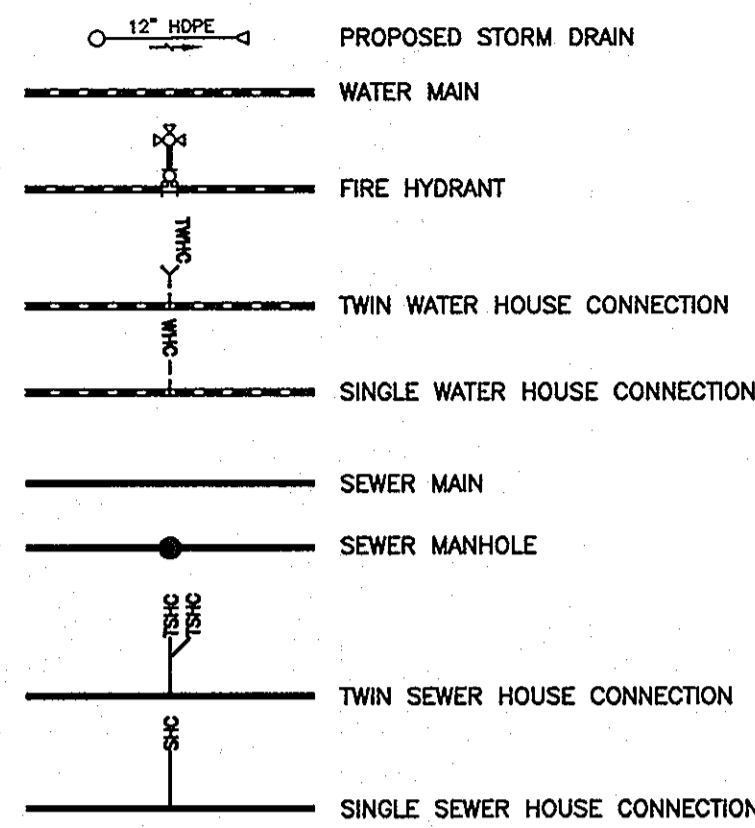


SIMPSON MILL - PHASE 2

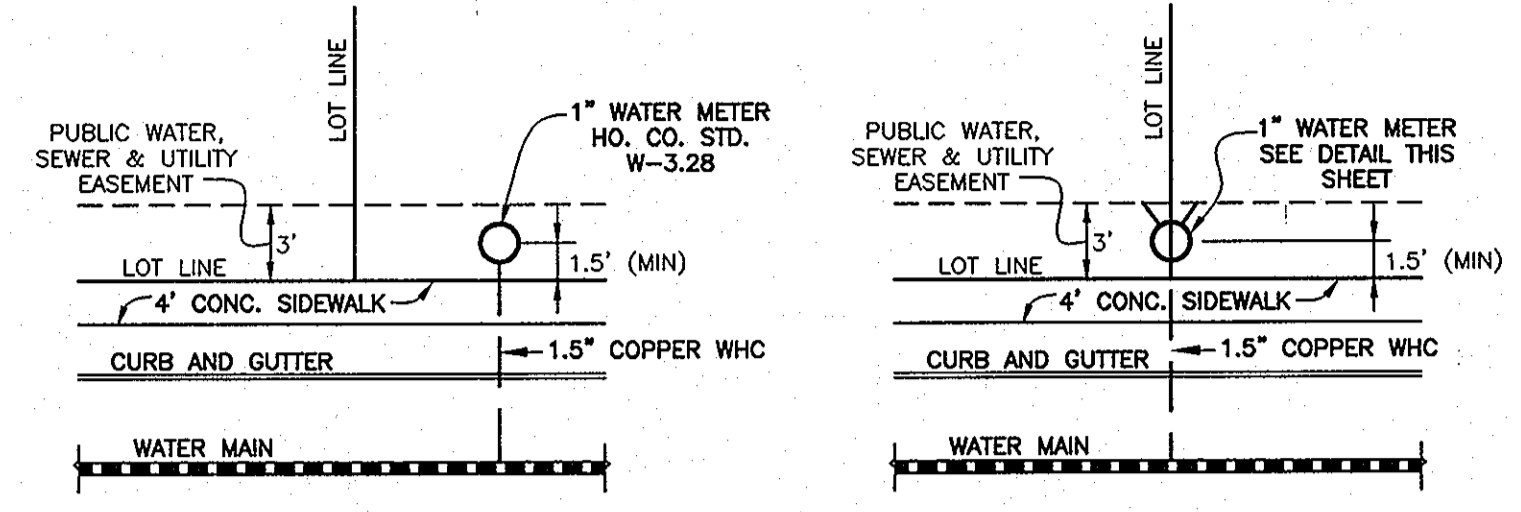
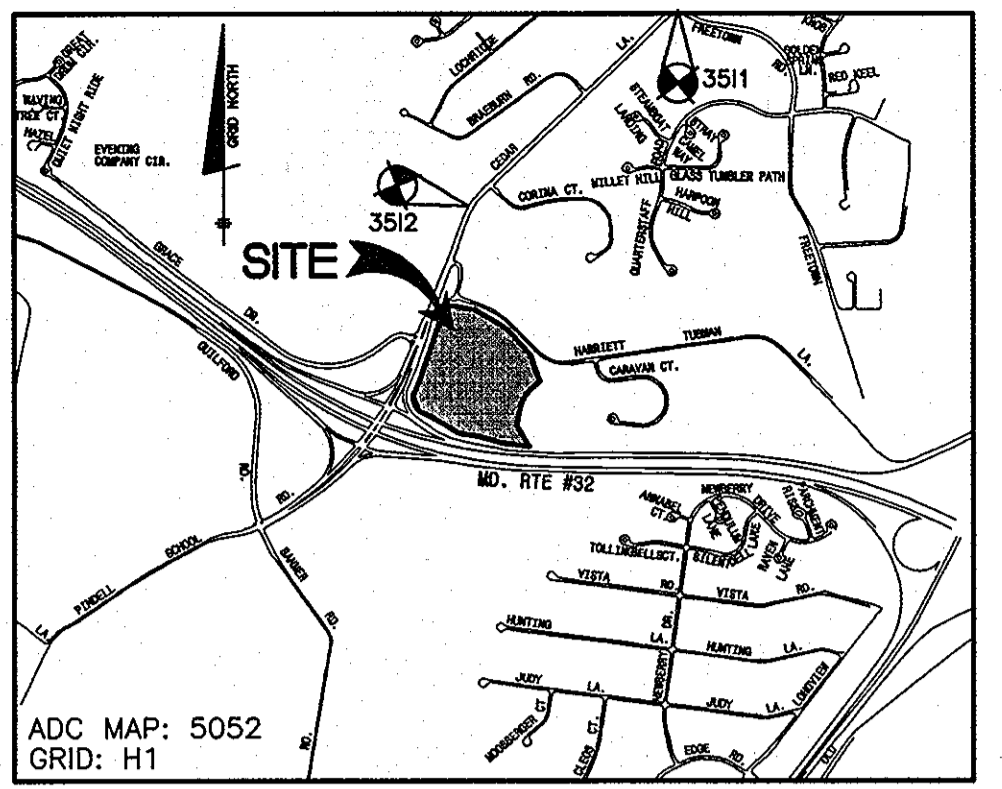
PUBLIC WATER AND PUBLIC SEWER CONSTRUCTION PLANS

CONTRACT NO. 34-4739-D

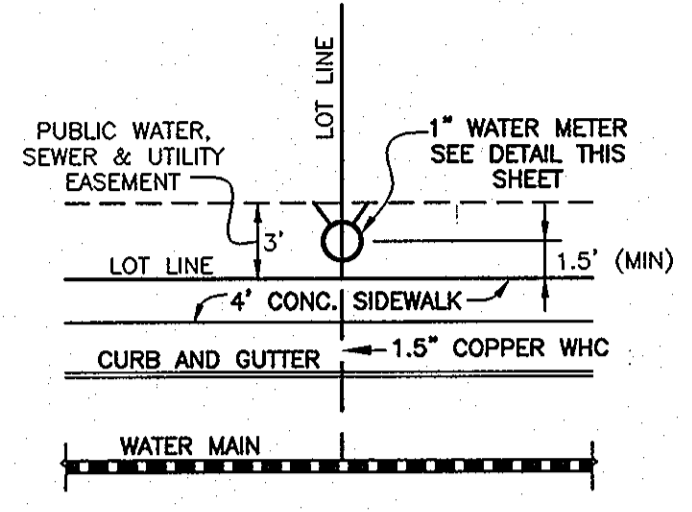
LEGEND



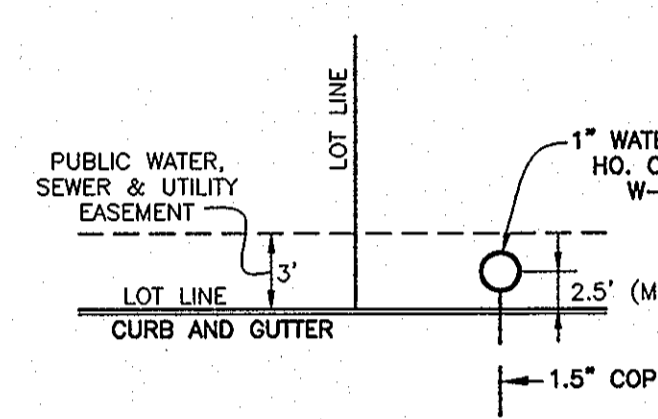
BENCH MARKS NAD'83	
HO. CO. #3511 STAMPED DISC SET ON TOP OF A 3" DEEP COLLUM OF CONCRETE 2" BELOW SURFACE N 557110.3963' E 1344893.6204' ELEV. 400.034'	HO. CO. #3512 STAMPED DISC SET ON TOP OF A 3" DEEP COLLUM OF CONCRETE 2" BELOW SURFACE N 555100.7743' E 1342732.9971' ELEV. 329.719'



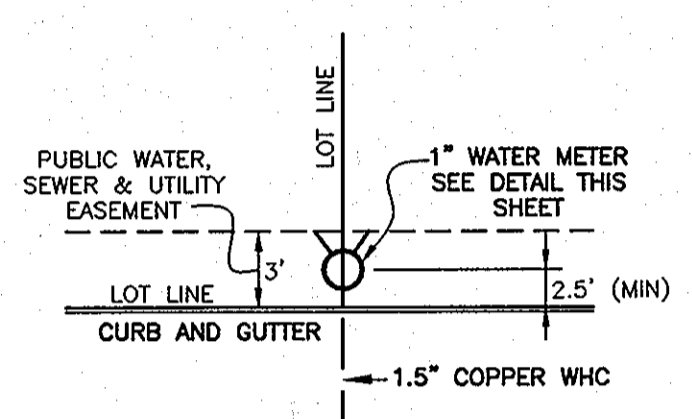
TYPICAL SINGLE WATER HOUSE CONNECTION
w/FRONT SIDEWALK
(OUTSIDE METER SETTING)
NOT TO SCALE



TYPICAL TWIN WATER HOUSE CONNECTION
w/FRONT SIDEWALK
(OUTSIDE METER SETTING)
NOT TO SCALE



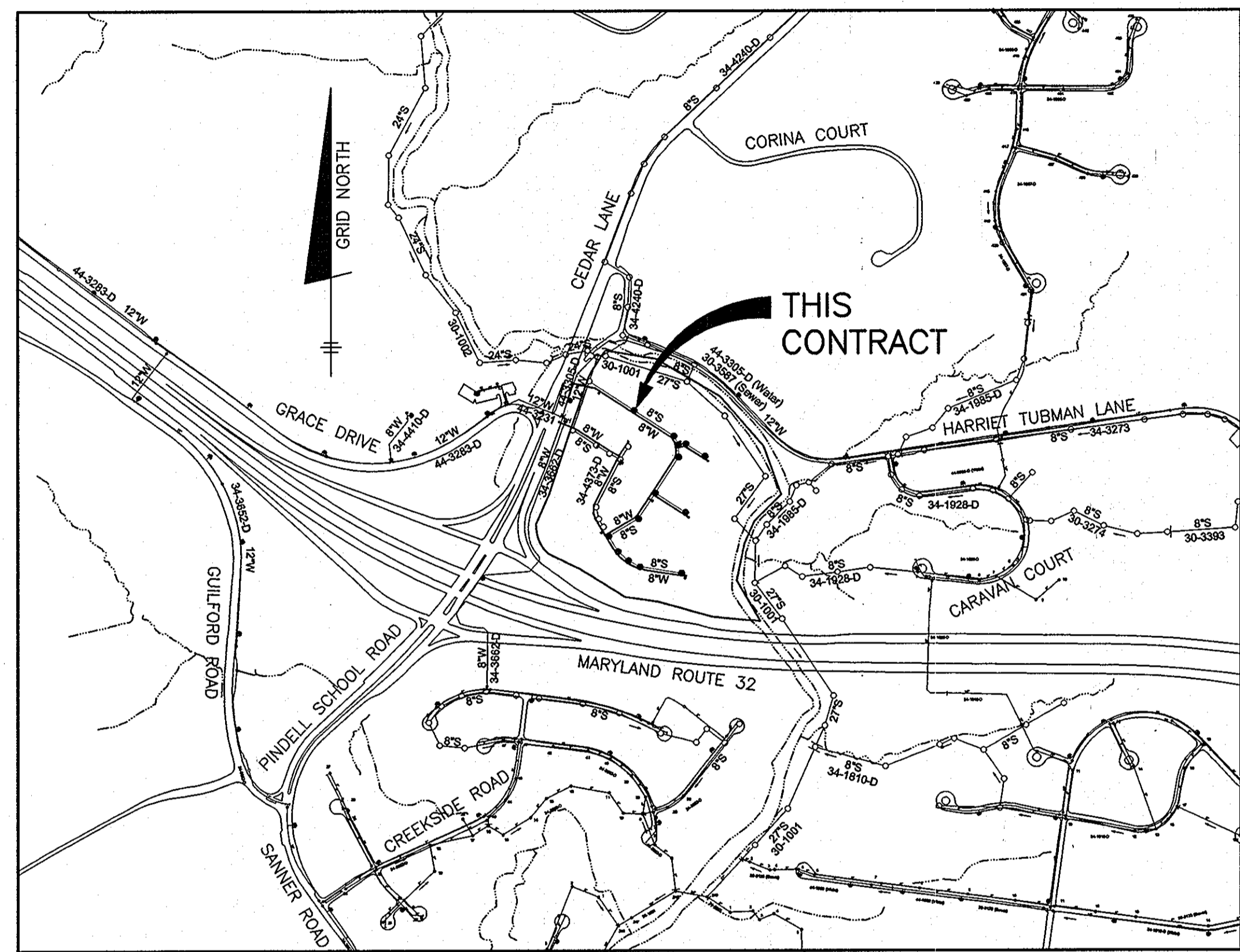
TYPICAL SINGLE WATER HOUSE CONNECTION
NO SIDEWALK
(OUTSIDE METER SETTING)
NOT TO SCALE



TYPICAL TWIN WATER HOUSE CONNECTION
NO SIDEWALK
(OUTSIDE METER SETTING)
NOT TO SCALE

NOTE:
SEE HO. CO. STD. DETAIL W-3.28 FOR SINGLE OUTSIDE METER SETTING
SEE DETAIL ON THIS SHEET FOR TWIN OUTSIDE METER SETTINGS

NOTE: HOUSE CONNECTIONS TO BE SIZED ACCORDINGLY:
SINGLE WHC = 1.5"
TWIN WHC = 1.5"
SINGLE SHC = 4"
TWIN SHC = 6"x4"



VICINITY MAP
SCALE: 1" = 600'

ITEMS	QUANTITIES ESTIMATED	AS-BUILT	
		QUANTITIES	MANUF./SUPPLIER
8" PVC C900 WATER (DR18)	2360 LF		
FIRE HYDRANTS (INCL. 8"x6" TEE & VALVE)	4 EA		
1.5" WHC	1894 LF		
12"x8" TS&V	1 EA		
8" PVC SEWER (SDR35)	1743 LF		
8" PVC C900 SEWER	359 LF		
MANHOLES	14 EA		
TYPE "B" DROP @ MH	2 EA		
4" SHC	1869 LF		

NAME OF UTILITY CONTRACTOR:
SURVEY AND DRAFTING DIVISION AS-BUILT DATE:

WELL AND SEPTIC ABANDONMENT CHART		
ADDRESS	WELL/SEPTIC	ACTION
6701 CEDAR LANE	WELL	TO BE ABANDONED BY A LICENSED WELL DRILLER
	SEPTIC	1,000 Gg SEPTIC TANK PUMPED, CRUSHED & FILLED IN OCTOBER, 2011

SHEET INDEX	
NO.	DESCRIPTION
1	TITLE SHEET PUBLIC WATER & SEWER MAINS
2-3	PLAN VIEW PUBLIC WATER & SEWER MAINS
4-5	PROFILES PUBLIC WATER & SEWER MAINS

TYPE OF BUILDING:	SFA
NO. OF LOTS/PARCELS/UNITS:	150
NUMBER OF WHC'S:	120
NUMBER OF SHC'S:	120
DRAINAGE AREA:	MIDDLE PATUXENT TREATMENT PLANT
WATER ZONE:	550
TEST GRADIENT:	700

THIS PLAN IS APPROVED FOR SOIL EROSION AND SEDIMENT CONTROL BY THE HOWARD SOIL CONSERVATION DISTRICT.

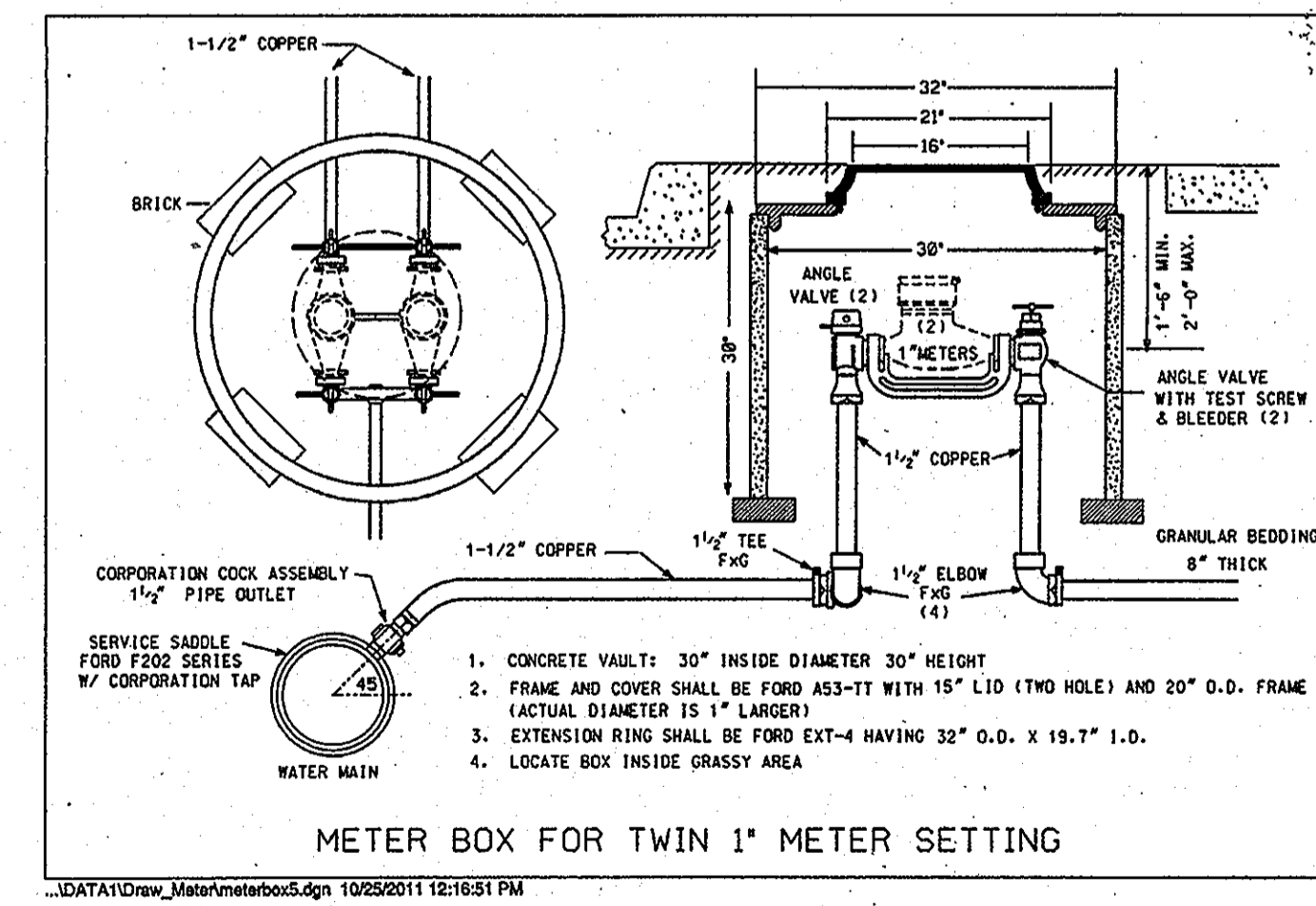
John R. Roberts 6/21/12
HOWARD SOIL CONSERVATION DISTRICT DATE

SEDIMENT CONTROL MEASURES FOR THIS CONTRACT WILL BE IMPLEMENTED IN ACCORDANCE WITH SECTION 308 OF THE HOWARD COUNTY STANDARD SPECIFICATIONS AND AS PER SDP-12-015

OWNER/DEVELOPER:
SIMPSON MILL, LLC
P.O. BOX 417
ELLICOTT CITY, MARYLAND 21041
410-465-4244

Professional Certification. I hereby certify that these documents were prepared or approved by me, and that I am a duly licensed professional engineer under the laws of the State of Maryland. License No. 28559, Expiration Date: 7-22-2013.

NOTE: ALL JOINTS AND CONNECTIONS LOCATED WITHIN STRUCTURAL FILL AREAS SHALL BE MECHANICALLY RESTRAINED IN ACCORDANCE WITH HOWARD COUNTY DESIGN MANUAL, VOLUME IV, STANDARD SPECIFICATIONS AND DETAILS FOR CONSTRUCTION (LATEST EDITION)



GENERAL NOTES

- PART I**
- APPROXIMATE LOCATIONS OF EXISTING MAINS ARE SHOWN. THE CONTRACTOR SHALL TAKE ALL NECESSARY PRECAUTIONS TO PROTECT EXISTING MAINS AND SERVICES AND MAINTAIN UNINTERRUPTED SERVICE. ANY DAMAGE INCURRED SHALL BE REPAIRED IMMEDIATELY TO THE SATISFACTION OF THE ENGINEER AT THE CONTRACTOR'S EXPENSE.
 - TOPOGRAPHIC FIELD SURVEYS WERE PERFORMED IN MAY, 2007 BY SILL, ADCOCK & ASSOCIATES AND IN FEBRUARY, 2003 BY BENCHMARK ENGINEERING, INC.
 - HORIZONTAL AND VERTICAL SURVEY CONTROLS:
THE COORDINATES SHOWN ON THE DRAWINGS ARE BASED ON MARYLAND STATE REFERENCE SYSTEM NAD '83/91 AS PROJECTED BY HOWARD COUNTY GEODETIC STATIONS NO. 3512 AND NO. 3511.
 - ALL VERTICAL CONTROLS ARE BASED ON NAVD '88. VERTICAL CONTROLS PROVIDED ON THE DRAWINGS ARE 3512 AND 3511.
 - ALL PIPE ELEVATIONS SHOWN ARE INVERT ELEVATIONS UNLESS OTHERWISE NOTED ON THE PLANS.
 - CLEAR ALL UTILITIES BY A MINIMUM OF 12 INCHES. CLEAR ALL POLES BY 5'-0" MINIMUM OR TUNNEL AS REQUIRED UNLESS OTHERWISE NOTED. THE OWNER HAS CONTACTED THE UTILITY COMPANIES AND HAS MADE ARRANGEMENTS FOR BRACING OF POLES AS SHOWN ON THE DRAWINGS. IN THE EVENT THE CONTRACTOR'S WORK REQUIRES THE BRACING OF ADDITIONAL POLES, ANY COST INCURRED BY THE OWNER FOR THE BRACING OF ADDITIONAL POLES OR DAMAGES SHALL BE DEDUCTED FROM MONIES OWED THE CONTRACTOR. THE CONTRACTOR SHALL COORDINATE WITH THE UTILITY COMPANIES TO SCHEDULE THE BRACING OF THE POLES.
 - FOR DETAILS NOT SHOWN ON THE DRAWINGS, AND FOR MATERIALS AND CONSTRUCTION METHODS, USE HOWARD COUNTY DESIGN MANUAL VOLUME IV, STANDARD SPECIFICATIONS AND DETAILS FOR CONSTRUCTION (LATEST EDITION). THE CONTRACTOR SHALL HAVE A COPY OF VOLUME IV ON THE JOB.
 - WHERE TEST PITS HAVE BEEN MADE ON EXISTING UTILITIES, THEY ARE NOTED BY THE SYMBOL AT THE LOCATIONS OF THE TEST PITS. A NOTE OR NOTES CONTAINING THE RESULTS OF THE TEST PIT OR PITS IS INCLUDED ON THE DRAWINGS. EXISTING UTILITIES IN THE VICINITY OF THE PROPOSED WORK FOR WHICH TEST PITS HAVE NOT BEEN DUG SHALL BE LOCATED BY THE CONTRACTOR TWO WEEKS IN ADVANCE OF CONSTRUCTION OPERATIONS AT HIS OWN EXPENSE.
 - THE CONTRACTOR SHALL NOTIFY THE FOLLOWING UTILITY COMPANIES OR AGENCIES AT LEAST FIVE WORKING DAYS BEFORE STARTING WORK SHOWN ON THESE PLANS:
AT&T (CONTRACTOR SERVICES) 1-800-252-1133
BGE (CONTRACTOR SERVICES) 410-637-8713
BGE (EMERGENCY) 410-685-0123
BUREAU OF UTILITIES 410-313-4900
COLONIAL PIPELINE CO. 785-1390
MISS UTILITY 1-800-257-7777
STATE HIGHWAY ADMINISTRATION 410-531-5533
VERIZON 1-800-743-0033/410-224-9210
 - TREES AND SHRUBS ARE TO BE PROTECTED FROM DAMAGE TO THE MAXIMUM EXTENT. TREES AND SHRUBS LOCATED WITHIN THE CONSTRUCTION STRIP ARE NOT TO BE REMOVED OR DAMAGED BY THE CONTRACTOR.
 - THE CONTRACTOR SHALL REMOVE TREES, STUMPS AND ROOTS ALONG LINE OF EXCAVATION. PAYMENT FOR SUCH REMOVAL SHALL BE INCLUDED IN THE UNIT PRICE BID FOR CONSTRUCTION OF THE MAIN.
 - THE CONTRACTOR SHALL NOTIFY THE BUREAU OF HIGHWAYS, HOWARD COUNTY, AT (410)-313-7450 AT LEAST FIVE WORKING DAYS BEFORE OPEN CUTTING OR BORING/JACKING OF ANY COUNTY ROAD FOR LAYING WATER/SEWER MAINS OR HOUSE CONNECTIONS. THE APPROVAL OF THESE DRAWINGS WILL CONSTITUTE COMPLIANCE WITH DPW REQUIREMENTS PER SECTION 18.114(c) OF THE HOWARD COUNTY CODE.

PART II WATER

- ALL WATER MAINS TO BE D.I.P. CLASS 54 UNLESS OTHERWISE NOTED.
- TOPS OF ALL WATER MAINS SHALL HAVE A MINIMUM OF 3'-6" OF COVER UNLESS OTHERWISE NOTED.
- VALVES ADJACENT TO TEES SHALL BE STRAPPED TO TEES.
- ALL FITTINGS SHALL BE BUTTRESSED OR ANCHORED WITH CONCRETE IN ACCORDANCE WITH STANDARD DETAILS UNLESS OTHERWISE PROVIDED FOR ON THE DRAWINGS.
- FIRE HYDRANTS SHALL BE SET TO THE BURY LINE ELEVATIONS SHOWN ON THE DRAWINGS. ALL FIRE HYDRANTS SHALL BE RESTRAINED AND BUTTRESSED WITH CONCRETE IN ACCORDANCE WITH THE STANDARD DETAILS. THE SOIL AROUND THE FIRE HYDRANT SHALL BE COMPACTED IN ACCORDANCE WITH SECTION 1000 AND SECTION 1005 OF THE STANDARD SPECIFICATIONS.
- THE CONTRACTOR SHALL NOT OPERATE ANY WATER MAIN VALVES ON THE EXISTING WATER SYSTEM.
- TRACER WIRE AND CONTINUITY TEST STATIONS SHALL BE INSTALLED ON ALL DIP AND PVC WATER MAINS IN ACCORDANCE WITH THE HOWARD COUNTY DESIGN MANUAL.
- FOR PVC WATER MAINS, ALL RECORDS FOR THE QUALITY CONTROL AND QUALIFICATION TEST REQUIREMENTS NOTED IN SECTION 5.1 OF THE AWWA STANDARD C900 FOR PVC PRESSURE PIPE SHALL BE SUBMITTED WITH THE PIPE MATERIAL CERTIFICATIONS OR SHOP DRAWINGS PRIOR TO APPROVAL OF THE MATERIAL FOR USE. THE TEST RECORDS SHALL BE FOR THE PIPE TO BE INSTALLED UNDER THIS CONTRACT. ALL PVC PIPE SHALL CONTAIN MARKINGS TO ALLOW CROSS REFERENCING OF THE PIPE SUPPLIED TO THE TEST RECORDS RECEIVED.
- UNLESS OTHERWISE NOTED ON THE PLANS OR IN THE SPECIFICATIONS, SEVENTEEN (17) POUND SACRIFICIAL ANODES SHALL BE INSTALLED ON ALL VALVES AND METALLIC FITTINGS USED WITH PVC WATER MAINS IN ACCORDANCE WITH VOLUME IV, STANDARD SPECIFICATIONS AND DETAILS FOR CONSTRUCTION. MAGNESIUM ANODES SHALL BE INSTALLED ON ALL VALVES AND DUCTILE IRON FITTINGS INCLUDING RESTRAINTS AND HARNESSSES. ZINC ANODES SHALL BE INSTALLED ON ALL STAINLESS STEEL FITTINGS AND SADDLES USED WITH PVC MAINS. ALL "TEES" USED WITH PVC MAINS SHALL BE DUCTILE IRON.

PART III SEWER

- ALL SEWER MAINS SHALL BE D.I.P. OR P.V.C. UNLESS OTHERWISE NOTED.
- ALL MANHOLES SHALL BE 4'-0" INSIDE DIAMETER UNLESS OTHERWISE NOTED.
- FORCE MAINS SHALL BE D.I.P. ONLY.
- MANHOLES SHOWN WITH 12" AND 16" WALLS ARE FOR BRICK MANHOLES ONLY.
- MANHOLES DESIGNATED W.T. IN PLAN AND PROFILE SHALL HAVE WATERTIGHT FRAME AND COVER, STANDARD DETAIL G5.52, WHERE WATERTIGHT MANHOLE FRAMES AND COVERS ARE USED, SET TOP OF FRAME 1'-0" ABOVE FINISHED GRADE UNLESS OTHERWISE NOTED ON THE DRAWINGS.
- HOUSE(S) WITH THE SYMBOL "C.N.S." INDICATES THAT CELLAR CANNOT BE SERVED.

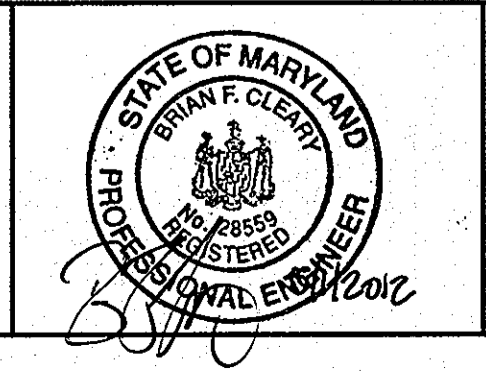
DEPARTMENT OF PUBLIC WORKS
HOWARD COUNTY, MARYLAND

John C. Carr 6/14/12
CHIEF, BUREAU OF UTILITIES DATE

DEPARTMENT OF PLANNING AND ZONING
HOWARD COUNTY, MARYLAND

John C. Carr 6/14/12
CHIEF, DEVELOPMENT ENGINEERING DIVISION DATE

BENCHMARK
ENGINEERING, INC.
8400 BALTIMORE NATIONAL PIKE SUITE 418 ELLICOTT CITY, MARYLAND 21043
(P) 410-465-6105 (F) 410-465-6644
60 THOMAS JOHNSON DRIVE FREDERICK, MARYLAND 21702
(P) 301-371-3505 (F) 301-371-3506
WWW.BE-COM-ENGINEERING.COM



DES:	DBT/MCR		
DRAFT:	DBT/MCR		
CHK:	BFC	BEI 2 REMOVE NOTE STRINGS 0-6.01-C-5.03 ARE NOT APPLICABLE	11-26-12
		BEI 1 REVISE PVC WATER QUANTITY TO 2360 L.F. REVISE DIP SEWER TO PVC C900 12" (4) UNINSTALLABLE	8-8-12
DATE:	05/2012	BY NO.	
REVISIONS		DATE	

TITLE SHEET
PUBLIC WATER & SEWER MAINS

600 SCALE MAP NO: 35 BLOCK: 23 200 SCALE MAP NO: 136

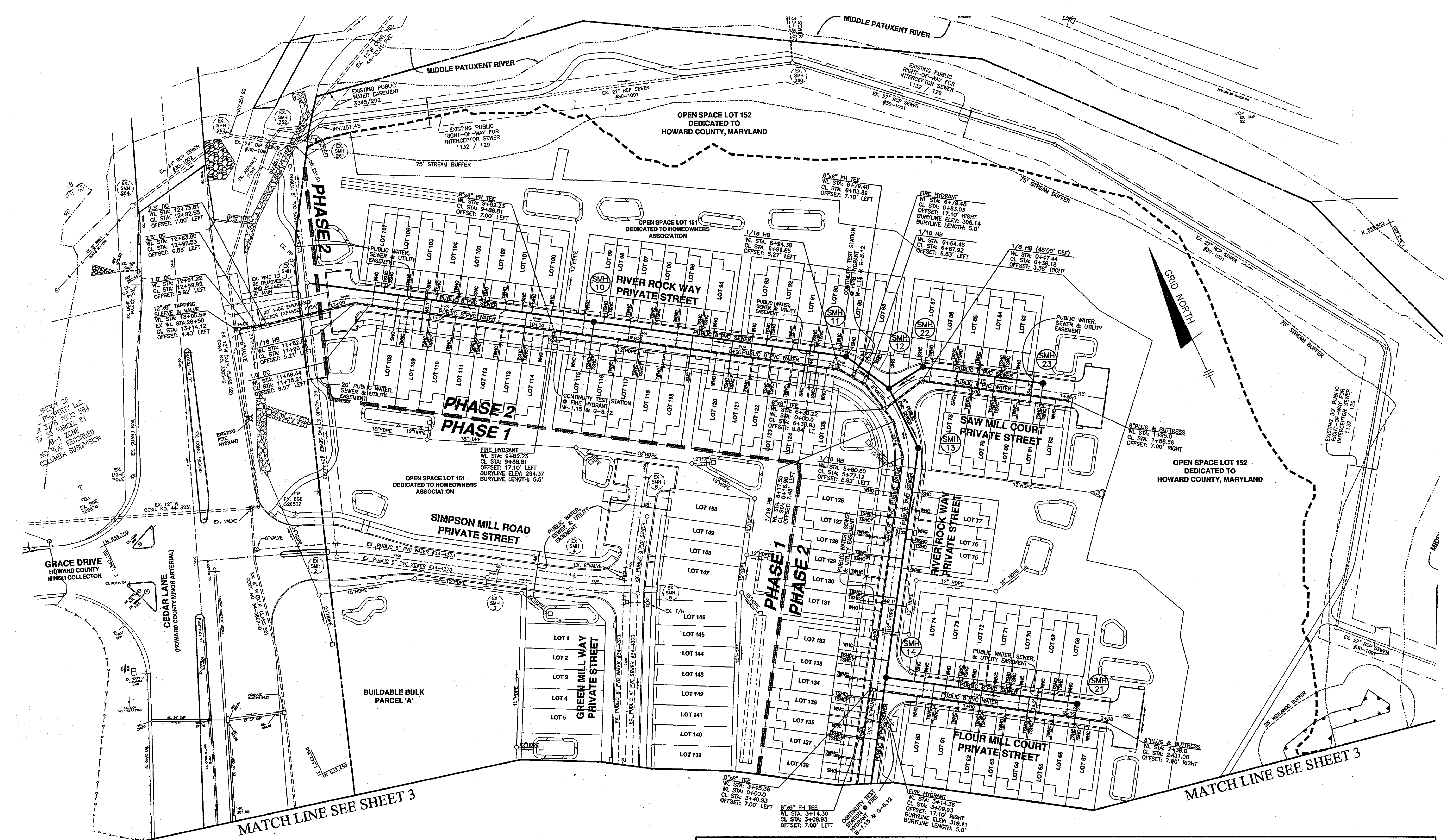
SIMPSON MILL - PHASE 2
LOTS 19 thru 138

TAX MAP: 35 - BLOCK: 23 - PARCEL: 116 - ZONED: R-SA-8 - ELECTION DISTRICT: 1
TAX MAP: 35 - BLOCK: 23 - PARCEL: 258, 476 - ZONED: POR - ELECTION DISTRICT: 1

CONTRACT NO. 34-4739-D

SCALE:
AS SHOWN
SHEET NO.
1 OF 5

LOT	ADDRESS	LOCATION DIMENSION 1	LOCATION DIMENSION 2
60	6802 FLOUR MILL COURT		
61	6804 FLOUR MILL COURT		
62	6806 FLOUR MILL COURT		
63	6808 FLOUR MILL COURT		
64	6810 FLOUR MILL COURT		
65	6812 FLOUR MILL COURT		
66	6814 FLOUR MILL COURT		
67	6816 FLOUR MILL COURT		
68	6818 FLOUR MILL COURT		
69	6820 FLOUR MILL COURT		
70	6822 FLOUR MILL COURT		
71	6824 FLOUR MILL COURT		
72	6826 FLOUR MILL COURT		
73	6828 FLOUR MILL COURT		
74	6830 FLOUR MILL COURT		
75	7842 RIVER ROCK WAY		
76	7844 RIVER ROCK WAY		
77	7846 RIVER ROCK WAY		
78	7848 RIVER ROCK WAY		
79	7850 RIVER ROCK WAY		
80	7852 RIVER ROCK WAY		
81	7854 RIVER ROCK WAY		
82	7856 RIVER ROCK WAY		
83	7858 RIVER ROCK WAY		
84	7860 RIVER ROCK WAY		
85	7862 RIVER ROCK WAY		
86	7864 RIVER ROCK WAY		
87	7866 RIVER ROCK WAY		
88	7868 RIVER ROCK WAY		
89	7870 RIVER ROCK WAY		
90	7872 RIVER ROCK WAY		
91	7874 RIVER ROCK WAY		
92	7876 RIVER ROCK WAY		
93	7878 RIVER ROCK WAY		
94	7880 RIVER ROCK WAY		
95	7882 RIVER ROCK WAY		
96	7884 RIVER ROCK WAY		
97	7886 RIVER ROCK WAY		
98	7888 RIVER ROCK WAY		
99	7890 RIVER ROCK WAY		
100	7892 RIVER ROCK WAY		
101	7894 RIVER ROCK WAY		
102	7896 RIVER ROCK WAY		
103	7898 RIVER ROCK WAY		
104	7900 RIVER ROCK WAY		
105	7902 RIVER ROCK WAY		
106	7904 RIVER ROCK WAY		
107	7906 RIVER ROCK WAY		
108	7908 RIVER ROCK WAY		
109	7910 RIVER ROCK WAY		
110	7912 RIVER ROCK WAY		
111	7914 RIVER ROCK WAY		
112	7916 RIVER ROCK WAY		
113	7918 RIVER ROCK WAY		
114	7920 RIVER ROCK WAY		
115	7922 RIVER ROCK WAY		
116	7924 RIVER ROCK WAY		
117	7926 RIVER ROCK WAY		
118	7928 RIVER ROCK WAY		
119	7930 RIVER ROCK WAY		
120	7932 RIVER ROCK WAY		
121	7934 RIVER ROCK WAY		
122	7936 RIVER ROCK WAY		
123	7938 RIVER ROCK WAY		
124	7940 RIVER ROCK WAY		
125	7942 RIVER ROCK WAY		
126	7944 RIVER ROCK WAY		
127	7946 RIVER ROCK WAY		
128	7948 RIVER ROCK WAY		
129	7950 RIVER ROCK WAY		
130	7952 RIVER ROCK WAY		
131	7954 RIVER ROCK WAY		
132	7956 RIVER ROCK WAY		
133	7958 RIVER ROCK WAY		
134	7960 RIVER ROCK WAY		
135	7962 RIVER ROCK WAY		
136	7964 RIVER ROCK WAY		
137	7966 RIVER ROCK WAY		
138	7968 RIVER ROCK WAY		
139	7970 RIVER ROCK WAY		



Lot	Dimension	Road	Lot	Dimension	Road
60	29.00	Flour Mill Court	100	29.00	River Rock Way
61	24.00	Flour Mill Court	101	24.00	River Rock Way
62	24.00	Flour Mill Court	102	24.00	River Rock Way
63	24.00	Flour Mill Court	103	24.00	River Rock Way
64	24.00	Flour Mill Court	104	24.00	River Rock Way
65	24.00	Flour Mill Court	105	24.00	River Rock Way
66	24.00	Flour Mill Court	106	24.00	River Rock Way
67	29.00	Flour Mill Court	107	29.00	River Rock Way
68	29.00	Flour Mill Court	108	29.00	River Rock Way
69	24.00	Flour Mill Court	109	24.00	River Rock Way
70	24.00	Flour Mill Court	110	24.00	River Rock Way
71	24.00	Flour Mill Court	111	24.00	River Rock Way
72	24.00	Flour Mill Court	112	24.00	River Rock Way
73	24.00	Flour Mill Court	113	24.00	River Rock Way
74	29.00	Flour Mill Court	114	29.00	River Rock Way
75	29.00	River Rock Way	115	29.00	River Rock Way
76	24.00	River Rock Way	116	24.00	River Rock Way
77	29.00	River Rock Way	117	24.00	River Rock Way
78	29.00	Saw Mill Court	118	24.00	River Rock Way
79	24.00	Saw Mill Court	119	29.00	River Rock Way
80	24.00	Saw Mill Court	120	29.00	River Rock Way
81	24.00	Saw Mill Court	121	24.00	River Rock Way
82	29.00	Saw Mill Court	122	24.00	River Rock Way
83	29.00	Saw Mill Court	123	24.00	River Rock Way
84	24.00	Saw Mill Court	124	24.00	River Rock Way
85	24.00	Saw Mill Court	125	29.00	River Rock Way
86	24.00	Saw Mill Court	126	29.00	River Rock Way
87	29.00	Saw Mill Court	127	20.00	River Rock Way
88	29.00	River Rock Way	128	20.00	River Rock Way
89	24.00	River Rock Way	129	20.00	River Rock Way
90	24.00	River Rock Way	130	20.00	River Rock Way
91	24.00	River Rock Way	131	29.00	River Rock Way
92	24.00	River Rock Way	132	25.00	River Rock Way
93	29.00	River Rock Way	133	20.00	River Rock Way
94	29.00	River Rock Way	134	20.00	River Rock Way
95	24.00	River Rock Way	135	20.00	River Rock Way
96	24.00	River Rock Way	136	20.00	River Rock Way
97	24.00	River Rock Way	137	20.00	River Rock Way
98	24.00	River Rock Way	138	25.00	River Rock Way
99	29.00	River Rock Way			

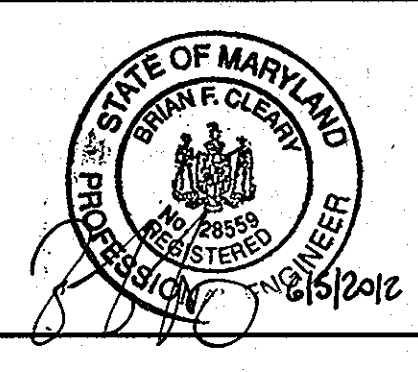
MANHOLE	LOCATION	RIM ELEVATION	HO. CO. STD
10	CL STA. 9+50.60 OFFS. 7.00' RIGHT (RIVER ROCK WAY)	295.00	G-5.11
11	CL STA. 6+97.97 OFFS. 9.41' RIGHT (RIVER ROCK WAY)	304.84	G-5.11
12	CL STA. 6+47.82 OFFS. 7.00' RIGHT (RIVER ROCK WAY)	307.34	S-1.32 'B'
13	CL STA. 5+85.38 OFFS. 10.01' RIGHT (RIVER ROCK WAY)	310.34	G-5.11
14	CL STA. 3+54.93 OFFS. 7.00' RIGHT (RIVER ROCK WAY)	317.65	S-1.32 'A'
21	CL STA. 1+99.50 OFFS. 7.00' LEFT (FLOUR MILL COURT)	309.98	S-1.31
22	CL STA. 0+43.03 OFFS. 10.04' LEFT (SAW MILL COURT)	306.35	G-5.11
23	CL STA. 1+60.96 OFFS. 7.00' LEFT (SAW MILL COURT)	302.90	S-1.31

LOT	ADDRESS	LOCATION DIMENSION 1	LOCATION DIMENSION 2	LOT	ADDRESS	LOCATION DIMENSION 1	LOCATION DIMENSION 2
60	6802 FLOUR MILL COURT			92	7858 RIVER ROCK WAY		
61	6804 FLOUR MILL COURT			93	7860 RIVER ROCK WAY		
62	6806 FLOUR MILL COURT			94	7862 RIVER ROCK WAY		
63	6808 FLOUR MILL COURT			95	7864 RIVER ROCK WAY		
64	6810 FLOUR MILL COURT			96	7866 RIVER ROCK WAY		
65	6812 FLOUR MILL COURT			97	7868 RIVER ROCK WAY		
66	6814 FLOUR MILL COURT			98	7870 RIVER ROCK WAY		
67	6816 FLOUR MILL COURT			99	7872 RIVER ROCK WAY		
68	6818 FLOUR MILL COURT			100	7874 RIVER ROCK WAY		
69	6820 FLOUR MILL COURT			101	7876 RIVER ROCK WAY		
70	6822 FLOUR MILL COURT			102	7878 RIVER ROCK WAY		
71	6824 FLOUR MILL COURT			103	7880 RIVER ROCK WAY		
72	6826 FLOUR MILL COURT			104	7882 RIVER ROCK WAY		
73	6828 FLOUR MILL COURT			105	7884 RIVER ROCK WAY		
74	6830 FLOUR MILL COURT			106	7886 RIVER ROCK WAY		
75	7842 RIVER ROCK WAY			107	7888 RIVER ROCK WAY		
76	7844 RIVER ROCK WAY			108	7890 RIVER ROCK WAY		
77	7846 RIVER ROCK WAY			109	7892 RIVER ROCK WAY		
78	7848 RIVER ROCK WAY			110	7894 RIVER ROCK WAY		
79	7850 RIVER ROCK WAY			111	7896 RIVER ROCK WAY		
80	7852 RIVER ROCK WAY			112	7898 RIVER ROCK WAY		
81	7854 RIVER ROCK WAY			113	7900 RIVER ROCK WAY		
82	7856 RIVER ROCK WAY			114	7902 RIVER ROCK WAY		
83	7858 RIVER ROCK WAY			115	7904 RIVER ROCK WAY		
84	7860 RIVER ROCK WAY			116	7906 RIVER ROCK WAY		
85	7862 RIVER ROCK WAY			117	7908 RIVER ROCK WAY		
86	7864 RIVER ROCK WAY			118	7910 RIVER ROCK WAY		
87	7866 RIVER ROCK WAY			119	7912 RIVER ROCK WAY		
88	7868 RIVER ROCK WAY			120	7914 RIVER ROCK WAY		
89	7870 RIVER ROCK WAY			121	7916 RIVER ROCK WAY		
90	7872 RIVER ROCK WAY			122	7918 RIVER ROCK WAY		
91	7874 RIVER ROCK WAY			123	7920 RIVER ROCK WAY		

DEPARTMENT OF PUBLIC WORKS
HOWARD COUNTY, MARYLAND

DEPARTMENT OF PLANNING AND ZONING
HOWARD COUNTY, MARYLAND

BENCHMARK
ENGINEERS AND SURVEYORS, PLANNERS
ENGINEERING, INC.
8480 BALTIMORE NATIONAL PIKE & SUITE 418 • ELLICOTT CITY, MARYLAND 21043
(P) 410-465-8105 (F) 410-465-8664
60 THOMAS JOHNSON DRIVE • FREDERICK, MARYLAND 21702
(P) 301-371-3505 (F) 301-371-3506
WWW.BEI-CIVILENGINEERING.COM



DES: DBT/MCR
DRAFT: DBT/MCR
CHK: BFC
DATE: 06/2012

PLAN VIEW
PUBLIC WATER & SEWER MAINS

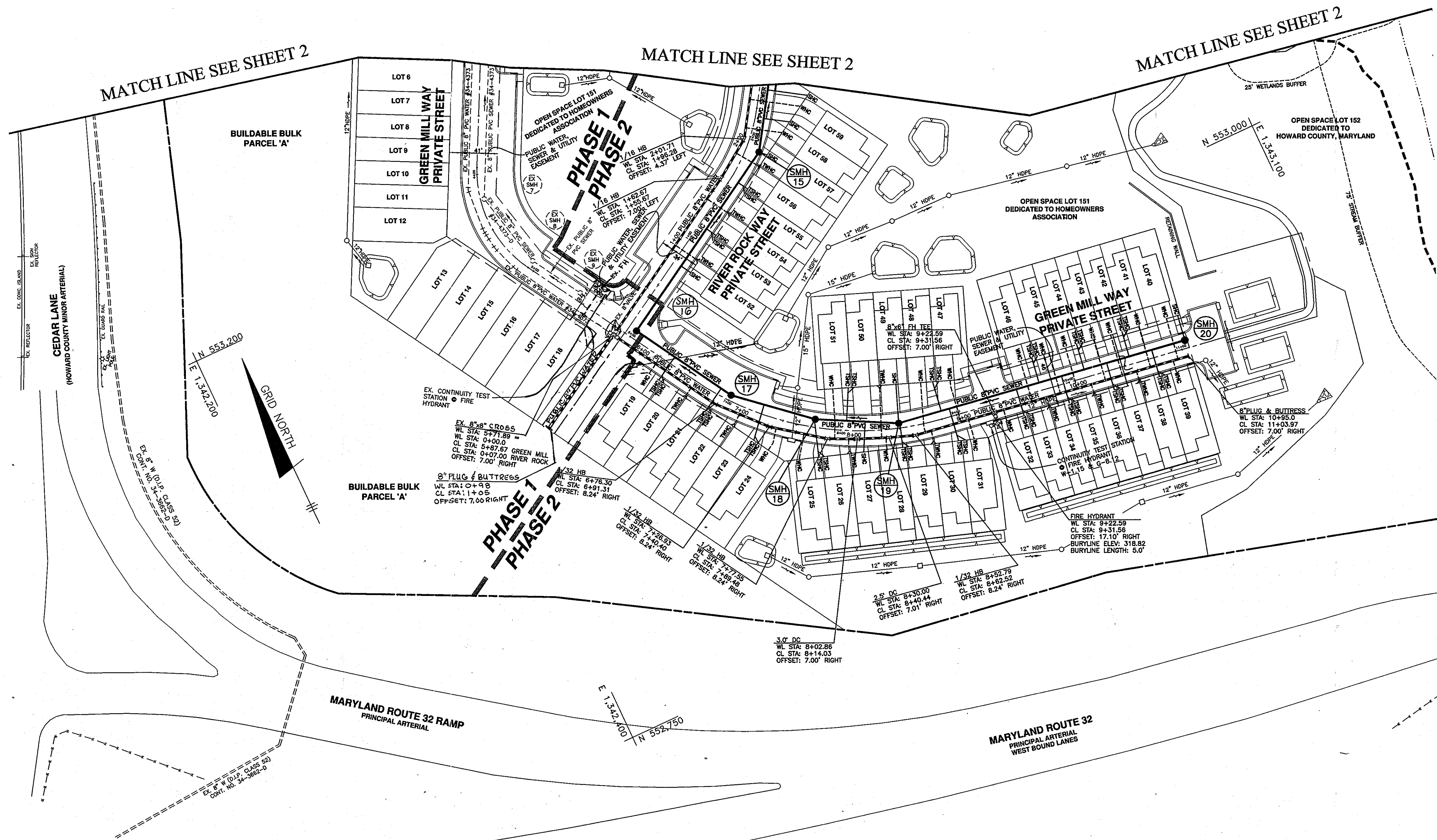
SIMPSON MILL - PHASE 2
LOTS 19 thru 138
TAX MAP: 35 - BLOCK: 23 - PARCEL: 116 - ZONED: R-SA-8 - ELECTION DISTRICT: 1
TAX MAP: 35 - BLOCK: 23 - PARCEL: 258, 476 - ZONED: POR - ELECTION DISTRICT: 1
CONTRACT NO. 34-4739-D

SCALE:
1" = 50'
SHEET NO.
2 OF 5

WATER HOUSE CONNECTION AS-BUILT LOCATION TABLE			
LOT	ADDRESS	LOCATION DIMENSION 1	LOCATION DIMENSION 2
19	6782 GREEN MILL WAY		
20	6784 GREEN MILL WAY		
21	6786 GREEN MILL WAY		
22	6788 GREEN MILL WAY		
23	6770 GREEN MILL WAY		
24	6772 GREEN MILL WAY		
25	6776 GREEN MILL WAY		
26	6778 GREEN MILL WAY		
27	6780 GREEN MILL WAY		
28	6782 GREEN MILL WAY		
29	6784 GREEN MILL WAY		
30	6786 GREEN MILL WAY		
31	6788 GREEN MILL WAY		
32	6792 GREEN MILL WAY		
33	6794 GREEN MILL WAY		
34	6796 GREEN MILL WAY		
35	6798 GREEN MILL WAY		
36	6800 GREEN MILL WAY		
37	6802 GREEN MILL WAY		
38	6804 GREEN MILL WAY		
39	6806 GREEN MILL WAY		
40	6805 GREEN MILL WAY		
41	6803 GREEN MILL WAY		
42	6801 GREEN MILL WAY		
43	6799 GREEN MILL WAY		
44	6797 GREEN MILL WAY		
45	6795 GREEN MILL WAY		
46	6793 GREEN MILL WAY		
47	6789 GREEN MILL WAY		
48	6787 GREEN MILL WAY		
49	6785 GREEN MILL WAY		
50	6783 GREEN MILL WAY		
51	6781 GREEN MILL WAY		
52	7802 RIVER ROCK WAY		
53	7804 RIVER ROCK WAY		
54	7806 RIVER ROCK WAY		
55	7808 RIVER ROCK WAY		
56	7810 RIVER ROCK WAY		
57	7812 RIVER ROCK WAY		
58	7814 RIVER ROCK WAY		
59	7816 RIVER ROCK WAY		

Front Lot Width Dimension Chart		
Lot	Dimension	Road
19	29.00	Green Mill Way
20	24.00	Green Mill Way
21	24.00	Green Mill Way
22	24.00	Green Mill Way
23	24.00	Green Mill Way
24	29.00	Green Mill Way
25	29.00	Green Mill Way
26	24.00	Green Mill Way
27	24.00	Green Mill Way
28	24.00	Green Mill Way
29	24.00	Green Mill Way
30	24.00	Green Mill Way
31	22.99	Green Mill Way
32	29.00	Green Mill Way
33	20.00	Green Mill Way
34	20.00	Green Mill Way
35	20.00	Green Mill Way
36	20.00	Green Mill Way
37	20.00	Green Mill Way
38	20.00	Green Mill Way
39	29.00	Green Mill Way
40	29.00	Green Mill Way
41	20.00	Green Mill Way
42	20.00	Green Mill Way
43	20.00	Green Mill Way
44	20.00	Green Mill Way
45	20.00	Green Mill Way
46	29.00	Green Mill Way
47	29.00	Green Mill Way
48	24.00	Green Mill Way
49	24.00	Green Mill Way
50	24.00	Green Mill Way
51	29.00	Green Mill Way
52	29.00	Green Mill Way
53	24.00	River Rock Way
54	24.00	River Rock Way
55	24.00	River Rock Way
56	24.00	River Rock Way
57	24.00	River Rock Way
58	24.00	River Rock Way
59	29.00	River Rock Way

SEWER HOUSE CONNECTION AS-BUILT LOCATION TABLE			
LOT	ADDRESS	LOCATION DIMENSION 1	LOCATION DIMENSION 2
19	6782 GREEN MILL WAY		
20	6784 GREEN MILL WAY		
21	6786 GREEN MILL WAY		
22	6788 GREEN MILL WAY		
23	6770 GREEN MILL WAY		
24	6772 GREEN MILL WAY		
25	6776 GREEN MILL WAY		
26	6778 GREEN MILL WAY		
27	6780 GREEN MILL WAY		
28	6782 GREEN MILL WAY		
29	6784 GREEN MILL WAY		
30	6786 GREEN MILL WAY		
31	6788 GREEN MILL WAY		
32	6792 GREEN MILL WAY		
33	6794 GREEN MILL WAY		
34	6796 GREEN MILL WAY		
35	6798 GREEN MILL WAY		
36	6800 GREEN MILL WAY		
37	6802 GREEN MILL WAY		
38	6804 GREEN MILL WAY		
39	6806 GREEN MILL WAY		
40	6805 GREEN MILL WAY		
41	6803 GREEN MILL WAY		
42	6801 GREEN MILL WAY		
43	6799 GREEN MILL WAY		
44	6797 GREEN MILL WAY		
45	6795 GREEN MILL WAY		
46	6793 GREEN MILL WAY		
47	6789 GREEN MILL WAY		
48	6787 GREEN MILL WAY		
49	6785 GREEN MILL WAY		
50	6783 GREEN MILL WAY		
51	6781 GREEN MILL WAY		
52	7802 RIVER ROCK WAY		
53	7804 RIVER ROCK WAY		
54	7806 RIVER ROCK WAY		
55	7808 RIVER ROCK WAY		
56	7810 RIVER ROCK WAY		
57	7812 RIVER ROCK WAY		
58	7814 RIVER ROCK WAY		
59	7816 RIVER ROCK WAY		



OWNER/DEVELOPER:
SIMPSON MILL, LLC
P.O. BOX 417
ELLCOTT CITY, MARYLAND 21041
410-465-4244

Professional Certification. I hereby certify that these documents were prepared or approved by me, and that I am a duly licensed professional engineer under the laws of the State of Maryland, License No. 28559, Expiration Date: 7-25-2013.

SEWER MANHOLE SCHEDULE				
MANHOLE	LOCATION	RIM ELEVATION	HO. CO. STD.	
15	CL STA. 1+90.26 OFFS. 11.27' RIGHT (RIVER ROCK WAY)	320.85	G-5.11	
16	CL STA. 6+01.67 OFFS. 7.00' LEFT (GREEN MILL WAY)	324.77	G-5.11	
17	CL STA. 7+00.00 OFFS. 4.84' LEFT (GREEN MILL WAY)	322.88	G-5.11	
18	CL STA. 7+76.92 OFFS. 7.00' LEFT (GREEN MILL WAY)	321.28	G-5.11	
19	CL STA. 8+50.00 OFFS. 4.30' LEFT (GREEN MILL WAY)	319.90	G-5.11	
20	CL STA. 11+04.65 OFFS. 7.00' LEFT (GREEN MILL WAY)	314.69	S-1.31	

DEPARTMENT OF PUBLIC WORKS HOWARD COUNTY, MARYLAND Chief, Bureau of Utilities Date: 6/14/12	DEPARTMENT OF PLANNING AND ZONING HOWARD COUNTY, MARYLAND Chief, Development Engineering Division Date: 6/14/12	BENCHMARK ENGINEERS & LAND SURVEYORS & PLANNERS ENGINEERING, INC. 8480 BALTIMORE NATIONAL PIKE & SUITE 418 A ELLCOTT CITY, MARYLAND 21043 (P) 410-465-9105 (F) 410-465-6544 60 THOMAS JOHNSON DRIVE & FREDERICK, MARYLAND 21702 (P) 301-371-3505 (F) 301-371-3506 WWW.BE-CMLENGINEERING.COM		DES: DBT/MCR DRAFT: DBT/MCR CHK: BFC DATE: 06/2012	BY: NO. 1 REVISIONS: 1 DATE: 6-8-12	PLAN VIEW PUBLIC WATER & SEWER MAINS 600 SCALE MAP NO: 35 BLOCK: 23 200 SCALE MAP NO: 136	SIMPSON MILL - PHASE 2 LOTS 19 thru 150 TAX MAP: 35 - BLOCK: 23 - PARCEL: 116 - ZONED: R-SA-8 - ELECTION DISTRICT: 1 TAX MAP: 35 - BLOCK: 23 - PARCEL: 258, 476 - ZONED: POR - ELECTION DISTRICT: 1 CONTRACT NO. 34-4739-D	SCALE: 1" = 50' SHEET NO. 3 OF 5
				600 SCALE MAP NO: 35 BLOCK: 23 200 SCALE MAP NO: 136				

Lot Number	S/L Sta.	Invert @ main or manhole	Drop House	SHC Slope	Invert @ PUE	Minimum Cellar	Basement Elevation
19	0+39.50	305.20	no	2.00%	305.68	309.94	325.01
20	0+39.50	305.20	no	2.00%	305.68	309.94	325.01
21	0+87.50	305.44	no	2.00%	305.92	310.18	324.34
22	0+87.50	305.44	no	2.00%	305.92	310.18	324.34
23	0+29.49	305.74	no	2.00%	306.38	310.64	322.67
24	0+29.49	305.74	no	2.00%	306.38	310.64	322.67
25	MH-18	306.23	no	2.00%	306.87	310.97	322.82
26	MH-18	306.23	no	2.00%	306.87	310.97	322.82
27	0+42.62	306.28	no	2.00%	306.90	310.9	322.15
28	MH-19	306.69	no	2.00%	307.11	311.21	321.48
29	MH-19	306.69	no	2.00%	307.11	311.21	321.48
30	0+44.82	306.85	no	2.00%	307.43	311.53	320.14
31	0+44.82	306.85	no	2.00%	307.43	311.53	320.14
32	1+04.38	307.28	no	2.00%	307.76	311.8	319.01
33	1+04.38	307.28	no	2.00%	307.76	311.8	319.01
34	1+44.38	307.57	no	2.00%	308.05	312.09	317.67
35	1+44.38	307.57	no	2.00%	308.05	312.09	317.67
36	1+84.38	307.86	no	2.00%	308.34	312.38	317.00
37	1+84.38	307.86	no	2.00%	308.34	312.38	317.00
38	2+24.38	308.15	no	2.00%	308.63	312.67	316.33
39	2+24.38	308.15	no	2.00%	308.63	312.67	316.33
40	MH-20	308.51	no	2.00%	308.95	312.99	312.13
41	2+04.38	308.00	no	2.00%	308.44	312.48	313.47
42	2+04.38	308.00	no	2.00%	308.44	312.48	313.47
43	1+64.38	307.71	no	2.00%	308.15	312.19	314.14
44	1+64.38	307.71	no	2.00%	308.15	312.19	314.14
45	1+24.38	307.42	no	2.00%	307.86	311.9	314.81
46	1+24.38	307.42	no	2.00%	307.86	311.9	314.81
47	0+37.62	306.80	no	2.00%	307.32	311.42	316.57
48	0+37.62	306.80	no	2.00%	307.32	311.42	316.57
49	MH-19	306.69	no	2.00%	307.37	311.47	317.24
50	0+26.80	306.20	no	2.00%	306.76	310.86	317.91
51	0+26.80	306.20	no	2.00%	306.76	310.86	317.91
52	1+18.16	304.56	no	2.00%	304.76	308.86	319.75
53	0+79.66	304.37	no	2.00%	304.57	308.67	319.08
54	0+79.66	304.37	no	2.00%	304.57	308.67	319.08
55	0+31.66	304.13	no	2.00%	304.33	308.43	318.41
56	0+31.66	304.13	no	2.00%	304.33	308.43	318.41
57	MH-15	304.13	no	2.00%	304.27	308.37	317.74
58	1+38.00	303.50	no	2.00%	303.94	308.04	317.74
59	1+13.48	303.19	no	2.00%	303.69	307.99	317.03
60	0+48.50	302.11	no	2.00%	302.59	306.69	317.03
61	0+48.50	302.11	no	2.00%	302.59	306.69	317.03
62	0+96.50	302.46	no	2.00%	302.94	307.04	315.69
63	0+96.50	302.46	no	2.00%	302.94	307.04	315.69
64	1+44.50	302.80	no	2.00%	303.28	307.58	313.68
65	1+44.50	302.80	no	2.00%	303.28	307.58	313.68
66	MH-21	303.33	no	2.00%	303.81	307.91	311.67
67	MH-21	303.33	no	2.00%	303.81	307.91	311.67
68	1+68.50	302.98	no	2.00%	303.18	307.28	307.14
69	1+68.50	302.98	no	2.00%	303.18	307.28	307.14
70	1+20.50	302.63	no	2.00%	302.83	306.93	309.15
71	1+20.50	302.63	no	2.00%	302.83	306.93	309.15
72	0+72.50	302.28	no	2.00%	302.48	306.58	311.16
73	0+72.50	302.28	no	2.00%	302.48	306.58	311.16
74	0+28.50	301.97	no	2.00%	302.17	306.27	313.17

OWNER/DEVELOPER:
SIMPSON MILL, LLC
P.O. BOX 417
ELLICOTT CITY, MARYLAND 21041
410-465-4244



Professional Certification. I hereby certify that these documents were prepared or approved by me, and that I am a duly licensed professional engineer under the laws of the State of Maryland. License No. 28559, Expiration Date: 7-22-2013.



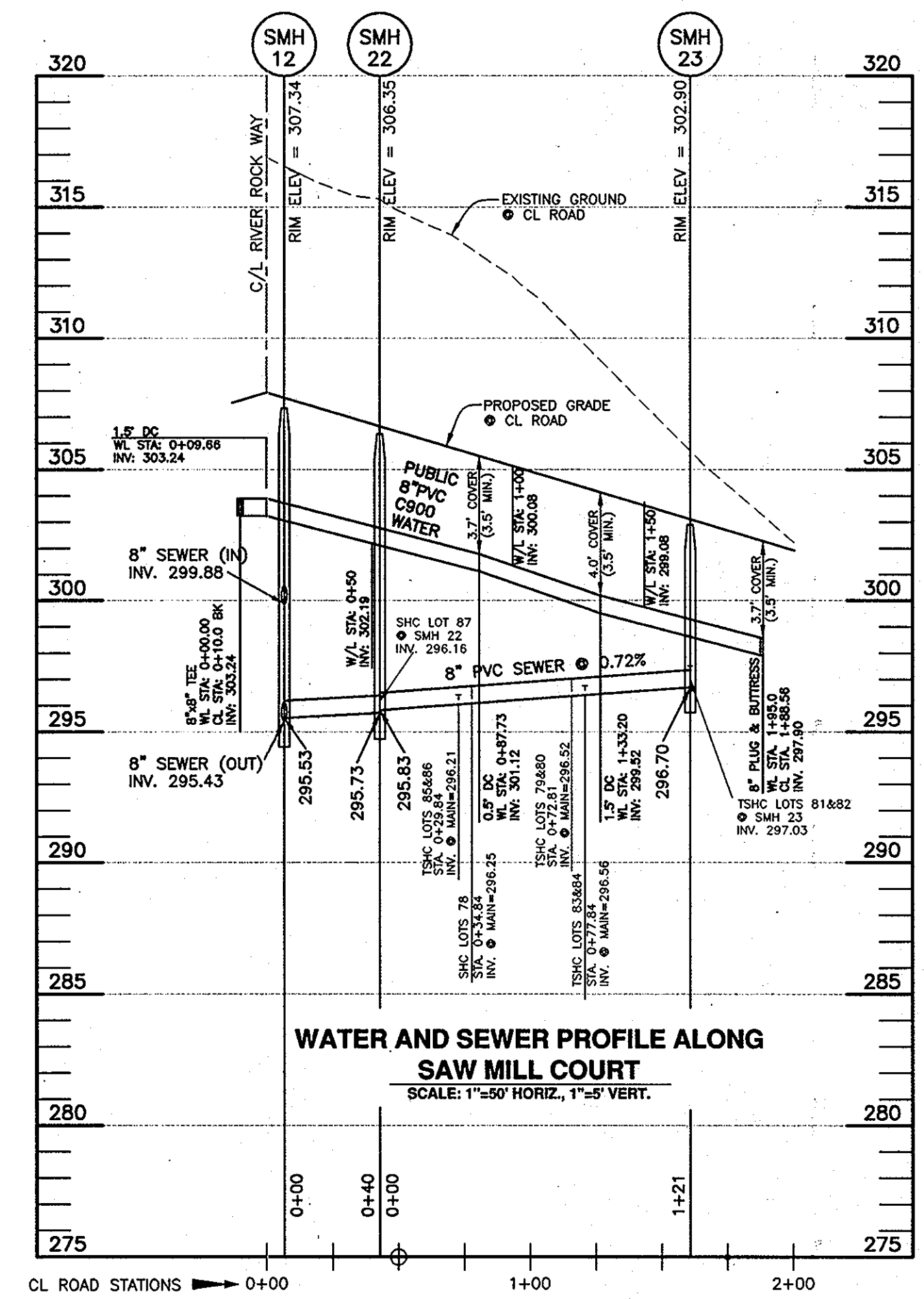
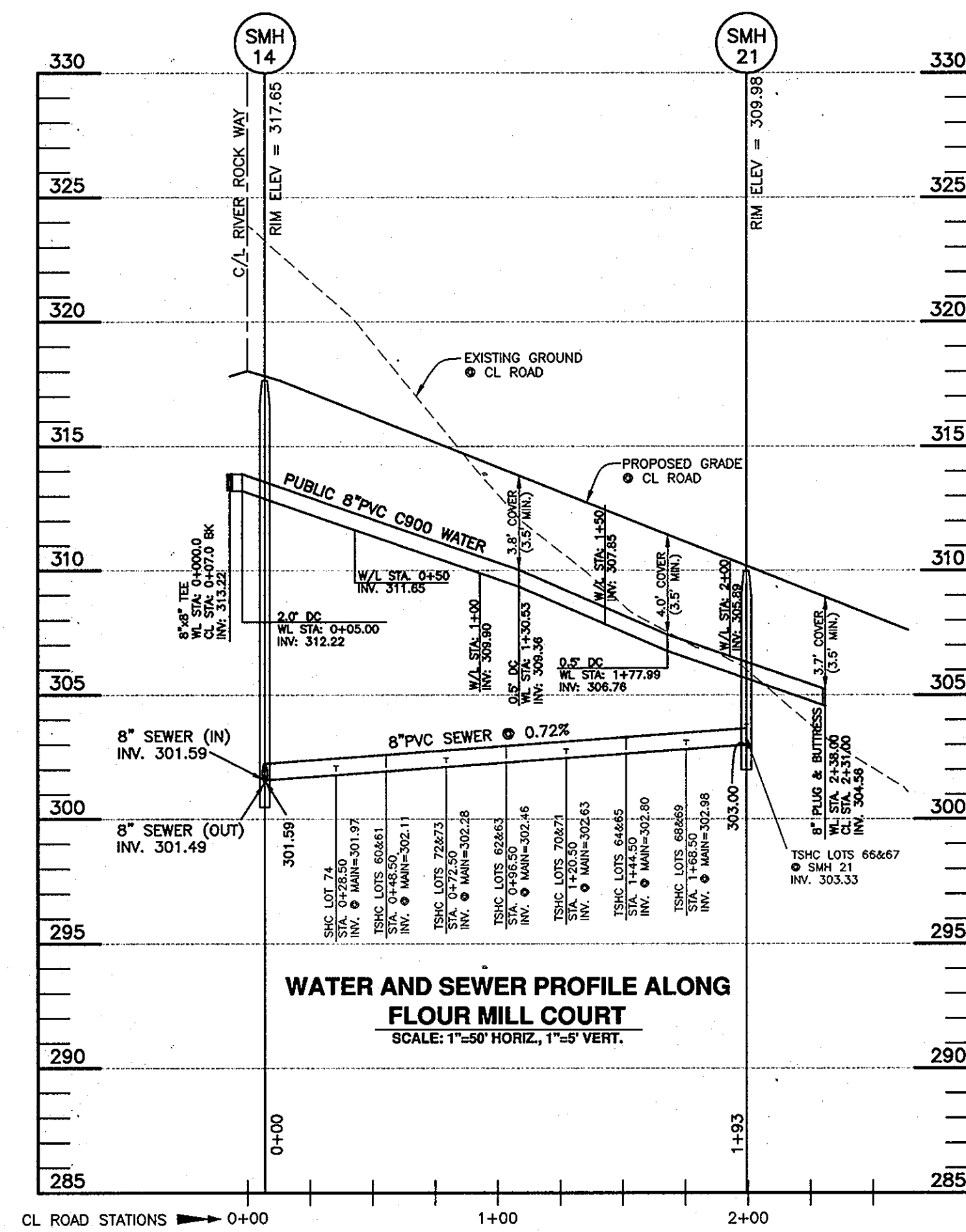
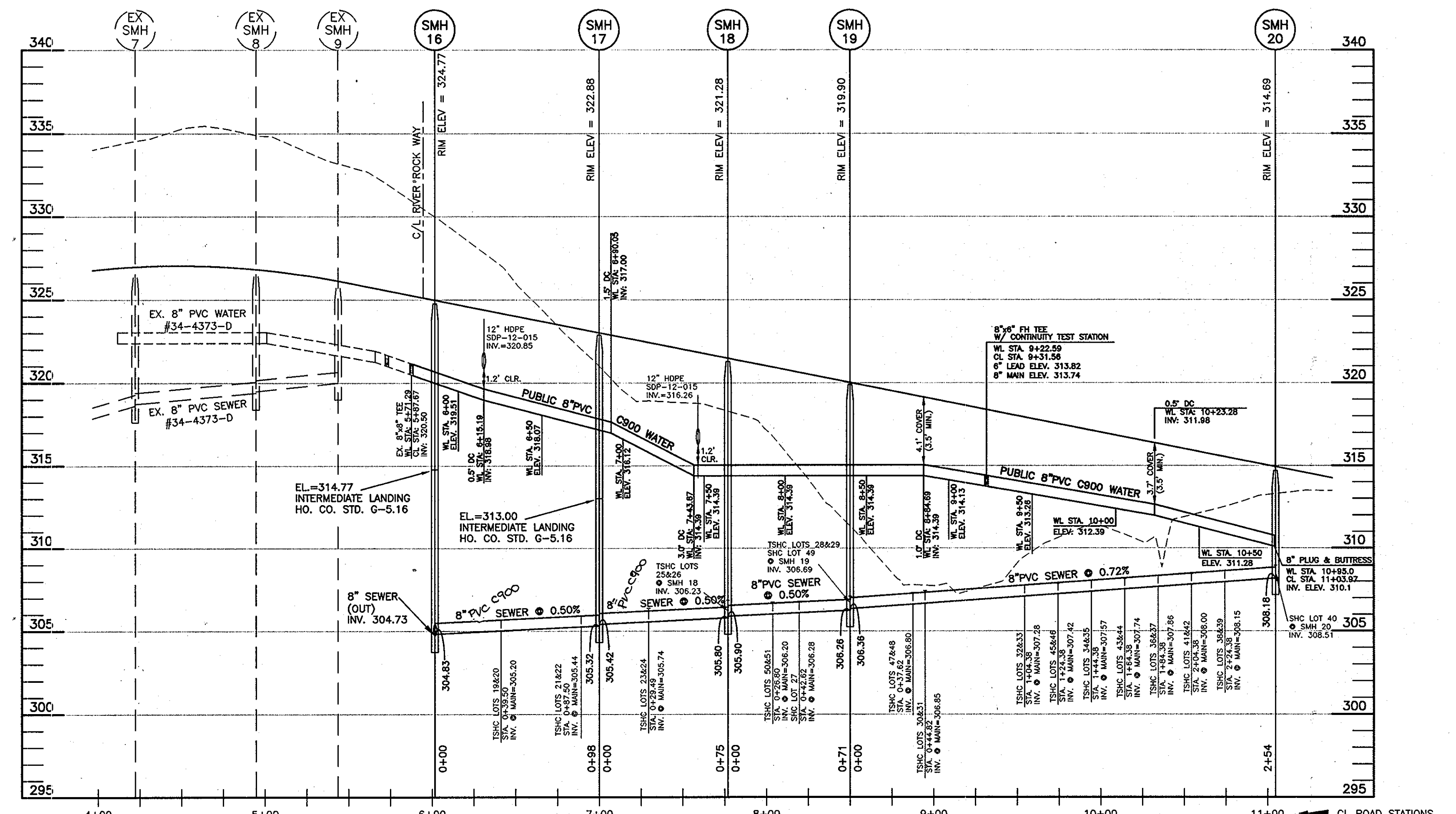
DES: DBT/MCR			
DRAFT: DBT/MCR			
CHK: BFC			
DATE: 06/2012	BY: [Signature]	NO. 1	
REVISE SEWER FROM SMH 16 TO SMH 18 TO BE PVC C900			
DATE: 06/2012	BY: [Signature]	NO. 1	

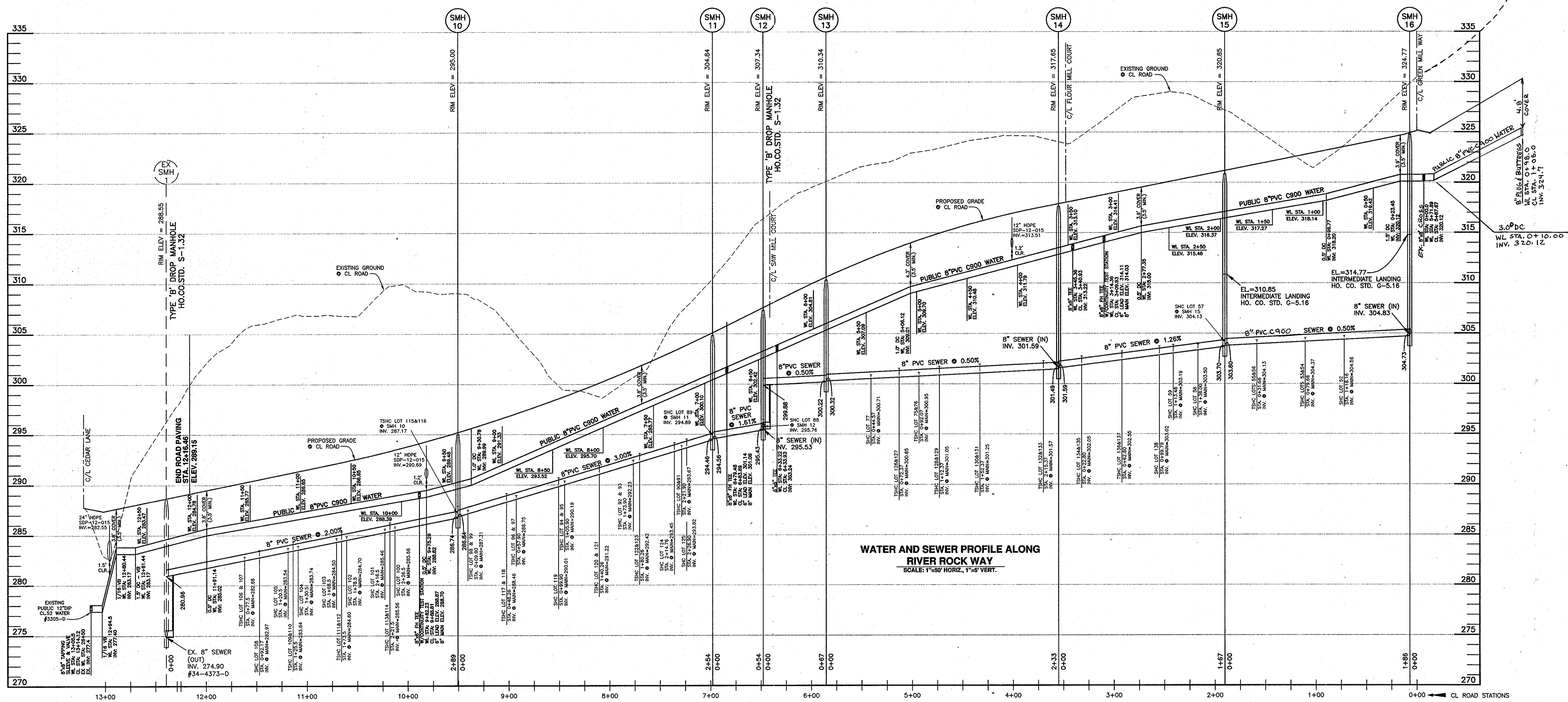
PROFILES OF PUBLIC WATER & SEWER MAINS

SIMPSON MILL - PHASE 2
LOTS 19 thru 150

TAX MAP: 35 - BLOCK: 23 - PARCEL: 116 - ZONED: R-SA-8 - ELECTION DISTRICT: 1
TAX MAP: 35 - BLOCK: 23 - PARCEL: 258, 476 - ZONED: POR - ELECTION DISTRICT: 1
CONTRACT NO. 34-4739-D

SCALE: AS SHOWN
SHEET NO. 4 OF 5





WATER AND SEWER PROFILE ALONG RIVER ROAD WAY
SCALE: 1"=50' HORIZ., 1"=5' VERT.

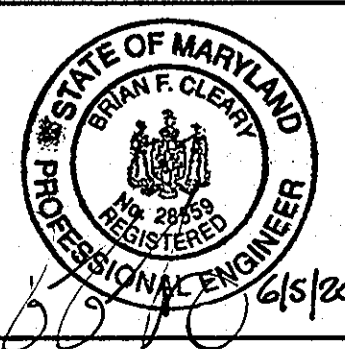
OWNER/DEVELOPER:
SIMPSON MILL, LLC
P.O. BOX 417
ELLCOTT CITY, MARYLAND 21041
410-465-4244

Professional Certification. I hereby certify that these documents were prepared or approved by me, and that I am a duly licensed professional engineer under the laws of the State of Maryland, License No. 28559, Expiration Date: 7-22-2013.

DEPARTMENT OF PUBLIC WORKS
HOWARD COUNTY, MARYLAND
Shirley C. Chen
CHIEF, BUREAU OF UTILITIES

DEPARTMENT OF PLANNING AND ZONING
HOWARD COUNTY, MARYLAND
David M. ...
CHIEF, DEVELOPMENT ENGINEERING DIVISION

BENCHMARK
ENGINEERS & LAND SURVEYORS & PLANNERS
ENGINEERING, INC.
8480 BALTIMORE NATIONAL PIKE & SUITE 418 A ELLCOTT CITY, MARYLAND 21043
60 THOMAS JOHNSON DRIVE & FREDERICK, MARYLAND 21702



DES: DBT/MCR	
DRAFT: DBT/MCR	
CHK: BFC	
DATE: 06/2012	
BY: BFC	
NO. 1	
REVISIONS	ADD 48 LF OF PVC WATER BEYOND SMH16. REVERSE SEWER FROM SMH16 TO SMH10 TO BE PVC C900
DATE: 8-8-12	

PROFILES OF PUBLIC WATER & SEWER MAINS
600 SCALE MAP NO: 35 BLOCK: 23 200 SCALE MAP NO: 136

SIMPSON MILL - PHASE 2
LOTS 19 thru 150
TAX MAP: 35 - BLOCK: 23 - PARCEL: 116 - ZONED: R-SA-8 - ELECTION DISTRICT: 1
TAX MAP: 35 - BLOCK: 23 - PARCEL: 258, 476 - ZONED: POR - ELECTION DISTRICT: 1
CONTRACT NO. 34-4739-D

SCALE: AS SHOWN
SHEET NO. 5 OF 5