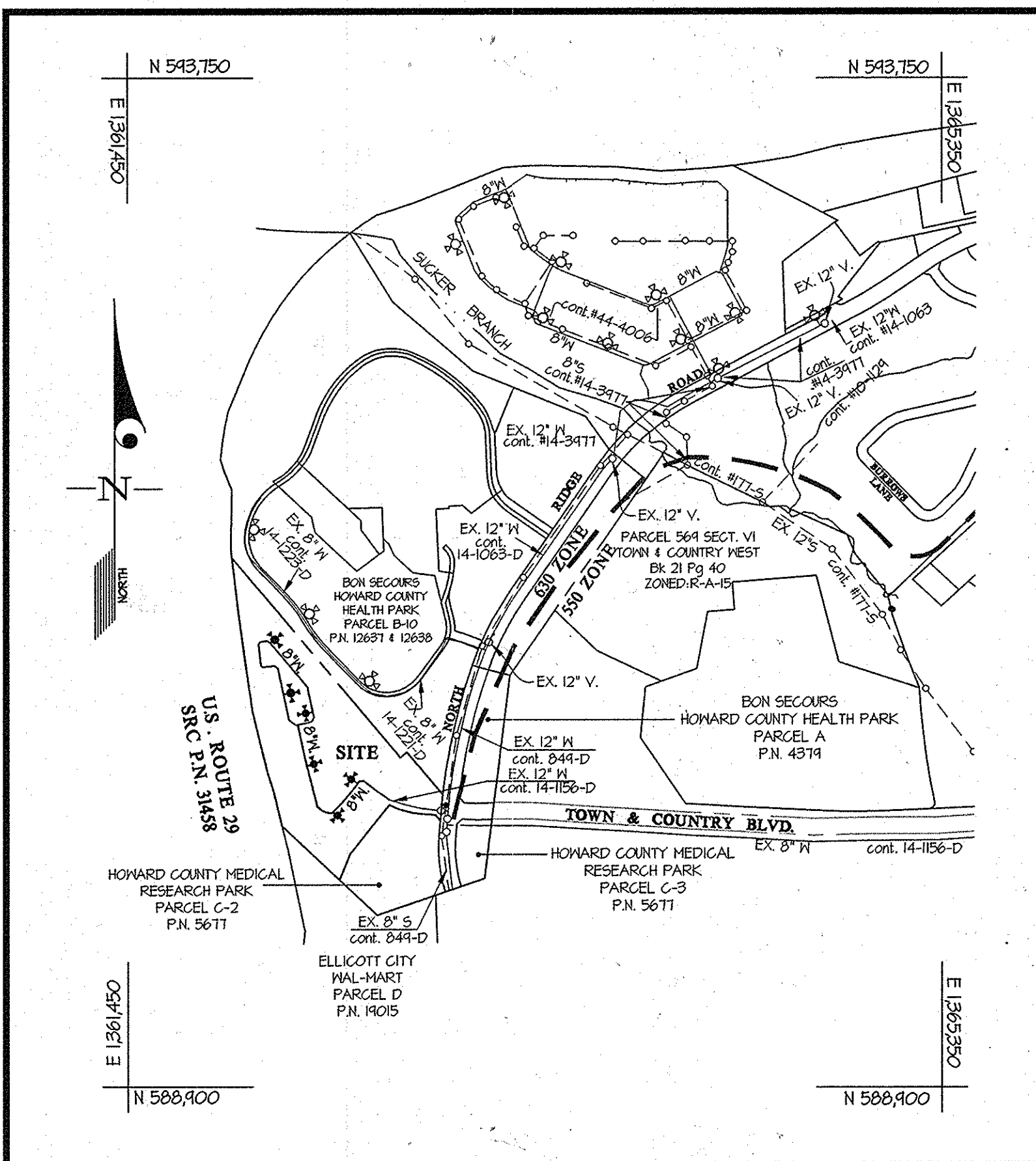


QUANTITIES AS-BUILT. TABLE listing items, quantities estimated, quantities AS-BUILT, and manufacturer/supplier. Includes items like 12" x 14" REDUCER, 6" WATER MAIN, etc.

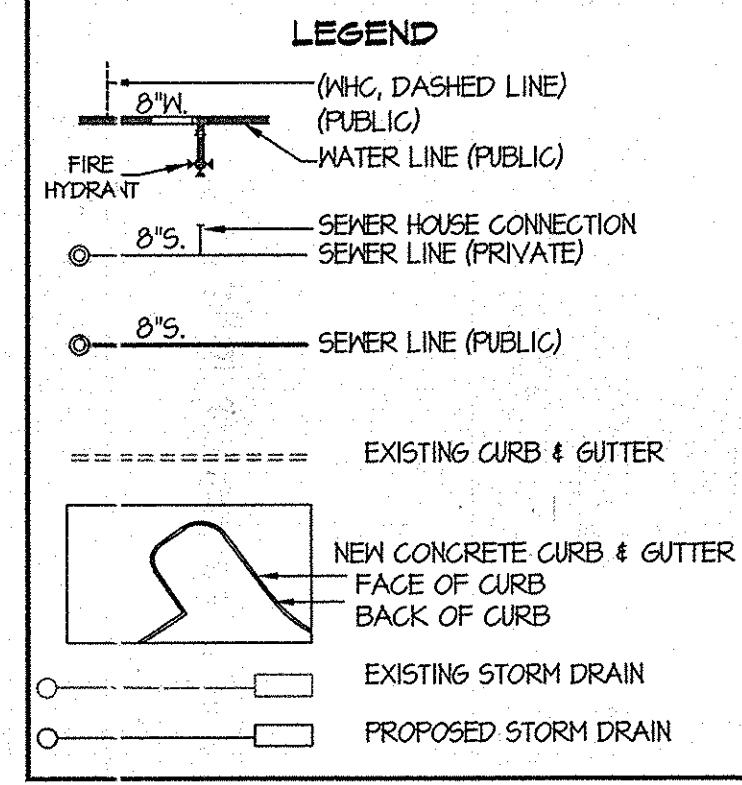
NAME OF UTILITY CONTRACTOR: MILFORD CONSTRUCTION CO. SURVEY AND DRAFTING DIV. CHECKBOX: AS-BUILT DATE: 10/25/13



VICINITY MAP SCALE: 1"=600'

WATER AND SEWER CODE: COUNTY USE WATER No. 630 E TEST GRADIENT: 100

TYPE OF BUILDING: CONDOMINIUM. No. of LOTS/PACELS: 121 UNITS. NUMBER OF S.H.C.'s: N/A (PRIVATE).



SHEET INDEX: 1. COVER SHEET, 2. WATER & SEWER EXTENSION PLAN, 3. WATER & SEWER PROFILES

Table with columns: SHC, PULL #1, PULL #2, PULL #3. Lists specific pull locations for lots 1 through 46.

Table with columns: SHC, PULL #1, PULL #2, PULL #3. Lists specific pull locations for lots 1 through 25.

GENERAL NOTES

- PART I - APPROXIMATE LOCATIONS OF EXISTING MAINS ARE SHOWN... PART II - WATER... PART III - SEWER...

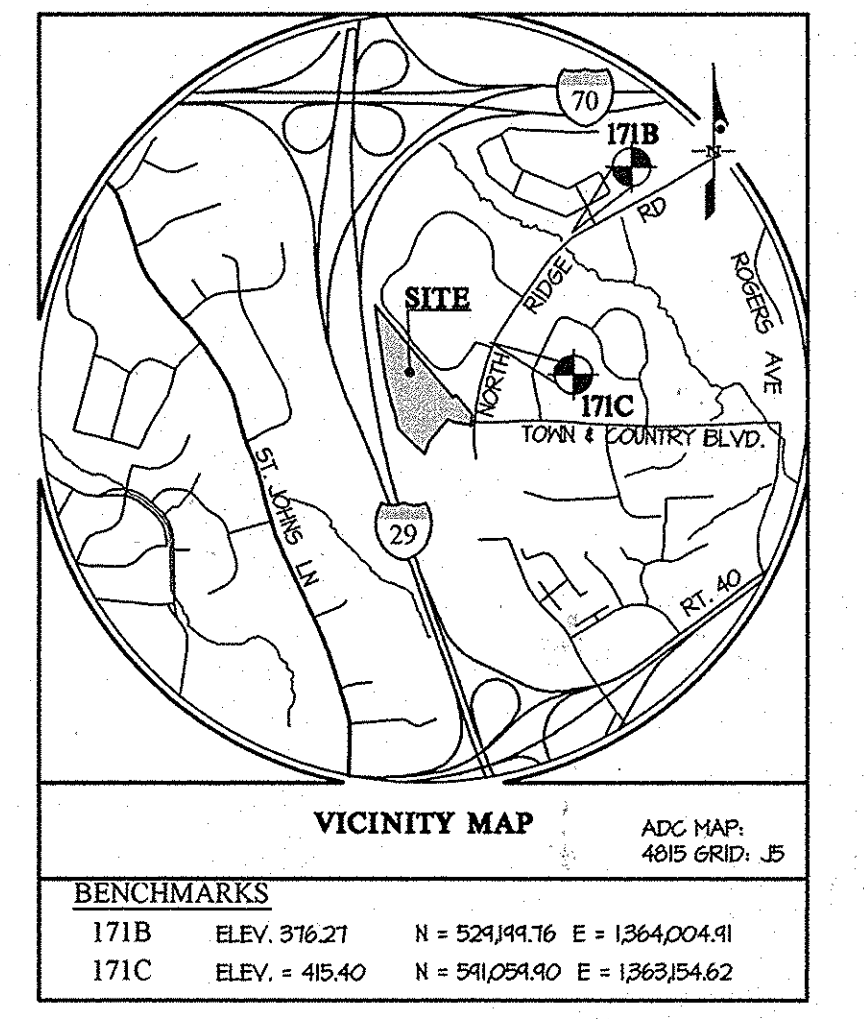


Table with columns: WHC, PULL #1, PULL #2, PULL #3. Lists specific pull locations for lots 1 through 46.

CONTRACT No. 14-4738-D THE GATHERINGS at ELLICOTT MILLS PARCEL "A" PLAT No. HOWARD COUNTY, MARYLAND DEPARTMENT OF PUBLIC WORKS

DEPARTMENT OF PUBLIC WORKS HOWARD COUNTY, MARYLAND. APPROVED: John C. Robertson 8/27/13

DEPARTMENT OF PLANNING AND ZONING HOWARD COUNTY, MARYLAND. APPROVED: [Signature] 8/27/13

GLWGUTSCHICK LITTLE & WEBER, P.A. CIVIL ENGINEERS, LAND SURVEYORS, LAND PLANNERS, LANDSCAPE ARCHITECTS

DATE: JULY, 2012. G.L.W. No. 11005

PROFESSIONAL CERTIFICATION: I HEREBY CERTIFY THAT THESE PLANS WERE PREPARED OR APPROVED BY ME, AND THAT I AM A DULY LICENSED PROFESSIONAL ENGINEER UNDER THE LAWS OF THE STATE OF MARYLAND, LICENSE NO. 12975

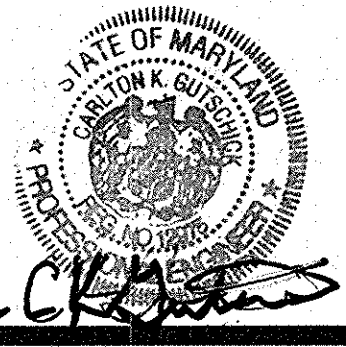


Table for revisions: KTC BY, NO, AS-BUILT, REVISION, DATE (2-2-2014)

COVER SHEET. 600' SCALE MAP NO. 17 BLOCK NO. 23

THE GATHERINGS at ELLICOTT MILLS CONTRACT No. 14-4738-D PARCEL A HOWARD COUNTY, MARYLAND ELECTION DISTRICT No. 2. SCALE AS SHOWN SHEET 1 OF 3

FITTING CHART			
STATION	FITTING	NAD '83/'91 COORDINATES	
WATER MAIN 'A'			
0+00	12" 8" RED.	N 540280.90 E 1362100.14	
1+51	8" 1/2 H.B.	N 540311.66 E 1362580.63	
1+74	8" 1/2 H.B.	N 540368.20 E 1362551.38	
1+87	8" x 6" F.H.T.	N 540358.51 E 1362550.26	
3+04	8" x 6" T.	N 540263.78 E 1362413.60	
3+64	8" x 6" F.H.T.	N 540233.32 E 1362435.12	
3+73	8" 1/2 H.B.	N 540216.75 E 1362424.40	
3+82	8" 1/2 H.B.	N 540216.47 E 1362420.84	
3+90	8" x 6" T.	N 540214.16 E 1362415.11	
4+51	8" 1/2 H.B.	N 540245.68 E 1362358.03	
5+63	8" x 6" T.	N 540354.42 E 1362330.77	
6+55	8" x 6" F.H.T.	N 540443.16 E 1362308.53	
8+58	8" x 6" T.	N 540641.62 E 1362265.14	
WATER MAIN 'B'			
0+00	8" x 8" T.	N 540641.62 E 1362265.14	
0+57	8" 1/2 H.B.	N 540653.34 E 1362320.47	
0+64	8" 1/2 H.B.	N 540654.85 E 1362330.50	
0+81	8" 1/2 H.B.	N 540610.15 E 1362331.23	
0+94	8" 1/2 H.B.	N 540682.84 E 1362334.62	
1+15	8" x 6" F.H.T.	N 540703.63 E 1362335.26	
2+25	8" 1/2 H.B.	N 540811.30 E 1362312.68	
2+38	8" x 8" T.	N 540822.47 E 1362306.93	
2+48	8" 1/2 H.B.	N 540831.68 E 1362302.65	
5+04	8" x 6" F.H.T.	N 541031.78 E 1362134.90	
5+15	8" 1/2 H.B.	N 541036.55 E 1362130.90	
5+31	8" 1/2 H.B.	N 541044.12 E 1362116.36	
5+65	8" 1/2 H.B.	N 541034.84 E 1362083.62	
5+78	8" 1/2 H.B.	N 541024.13 E 1362075.33	
6+84	8" 1/2 H.B.	N 540924.58 E 1362088.86	
6+94	8" 1/2 H.B.	N 540918.47 E 1362096.78	
7+41	8" 1/2 H.B.	N 540925.54 E 1362151.84	
7+71	8" 1/2 H.B.	N 540912.44 E 1362168.92	
8+99	8" x 6" F.H.T.	N 540787.16 E 1362195.14	
10+27	8" 1/2 H.B.	N 540661.84 E 1362221.47	
10+67	8" 1/2 H.B.	N 540634.62 E 1362255.56	
10+77	8" x 8" T.	N 540641.62 E 1362265.14	
WATER MAIN 'C'			
1+21	8" CAP	N 540888.94 E 1362408.22	

FIRE HYDRANT CHART		
FH	NAD '83/'91 COORDINATES	
A	N 540373.64 E 1362524.84	
B	N 540215.80 E 1362443.75	
C	N 540444.07 E 1362332.13	
D	N 540698.54 E 1362311.02	
E	N 541034.40 E 1362143.94	
F	N 540742.24 E 1362214.43	

SEWER MANHOLE CHART		
MH	NAD '83/'91 COORDINATES	
50	N 540238.06 E 1362462.43	

FOR PUBLIC WATER & SEWER PROFILES SEE SHEET 3 OF 3
 FOR PRIVATE STORM DRAIN & SEWER PROFILES SEE SHEET SDP-12-038

U.S. ROUTE 24
 SRC P.N. 31458

PREPARED FOR:
 NORTHTRIDGE, LLC
 24012 FREDERICK ROAD
 SUITE 200
 CLARKSBURG, MARYLAND 20871
 ATTN: JONATHAN W. SOULE
 301-428-8800

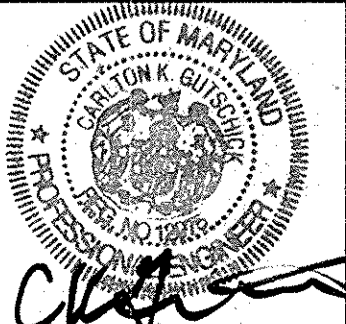
DEPARTMENT OF
 PUBLIC WORKS
 HOWARD COUNTY, MARYLAND

DEPARTMENT OF
 PLANNING AND ZONING
 HOWARD COUNTY, MARYLAND

GLW GUTSCHICK LITTLE & WEBER, P.A.
 CIVIL ENGINEERS, LAND SURVEYORS, LAND PLANNERS, LANDSCAPE ARCHITECTS
 3809 NATIONAL DRIVE - SUITE 250 - BURTONTOWN OFFICE PARK
 BURTONTOWN, MARYLAND 20866
 TEL: 301-421-4024 BAL: 410-880-1820 DC/VA: 301-989-2524 FAX: 301-421-4186

DATE
 JULY,
 2012

PROFESSIONAL CERTIFICATION
 I HEREBY CERTIFY THAT THESE PLANS
 WERE PREPARED OR APPROVED BY ME,
 AND THAT I AM A DULY LICENSED
 PROFESSIONAL ENGINEER UNDER THE
 LAWS OF THE STATE OF MARYLAND,
 LICENSE NO. 12975
 EXP. DATE: MAY 26, 2012



John Chen
 CHIEF, BUREAU OF UTILITIES

John Chen
 CHIEF, DEVELOPMENT ENGINEERING DIVISION

DES. Wsj
 DRN. Wsj
 CHK. DDS

G.L.W. No.
 11005

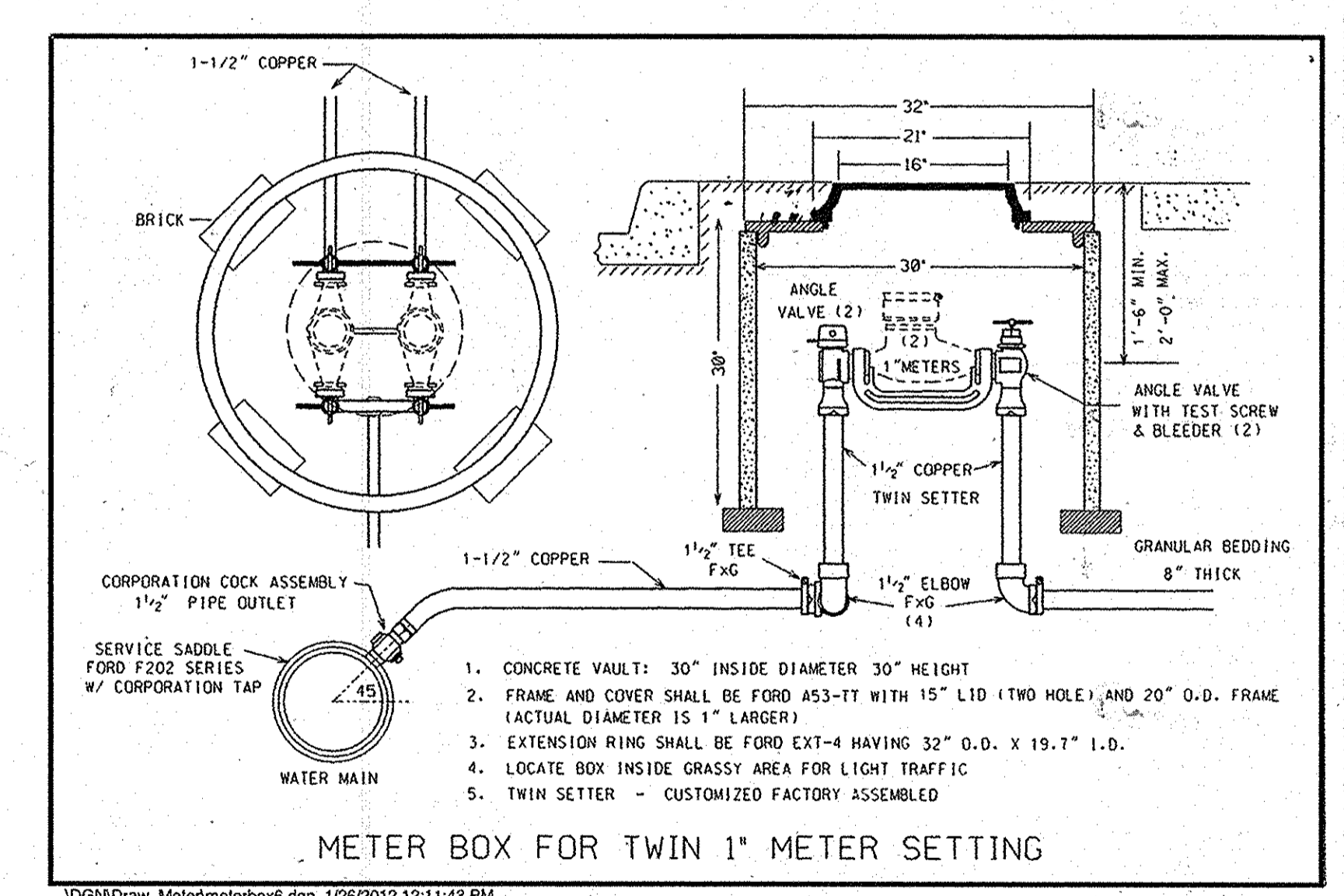
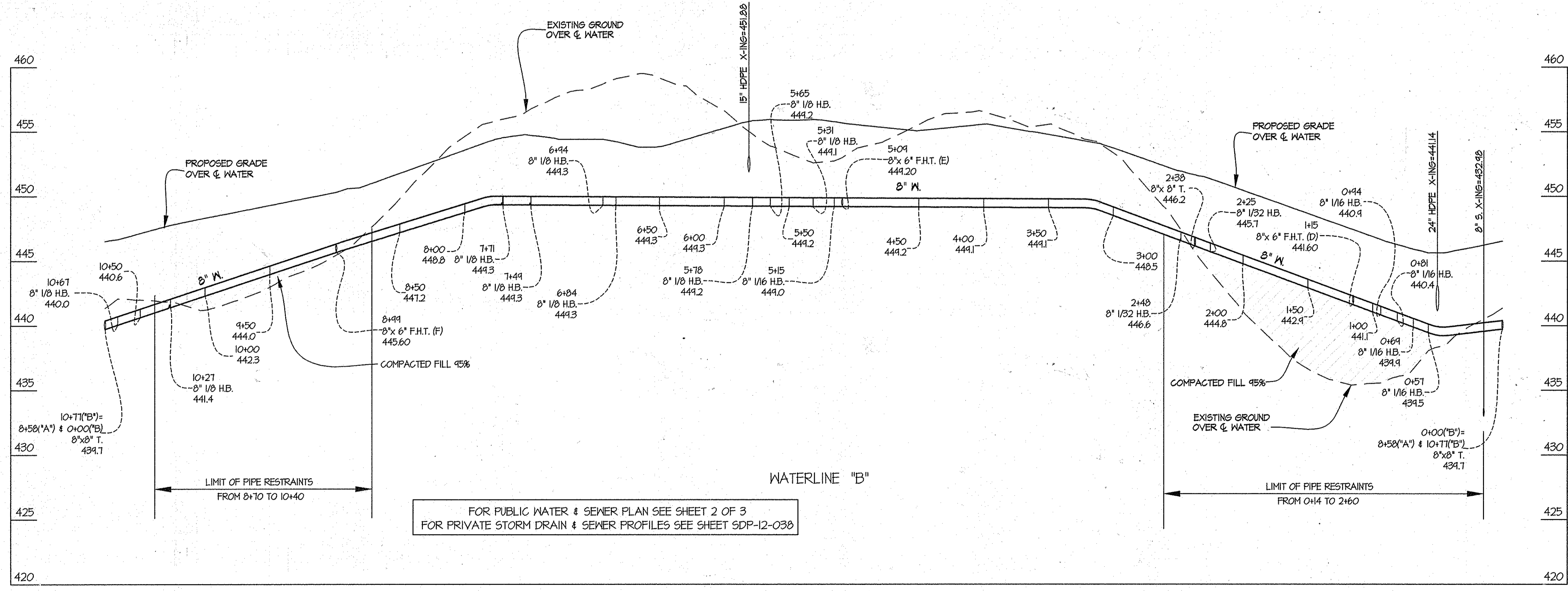
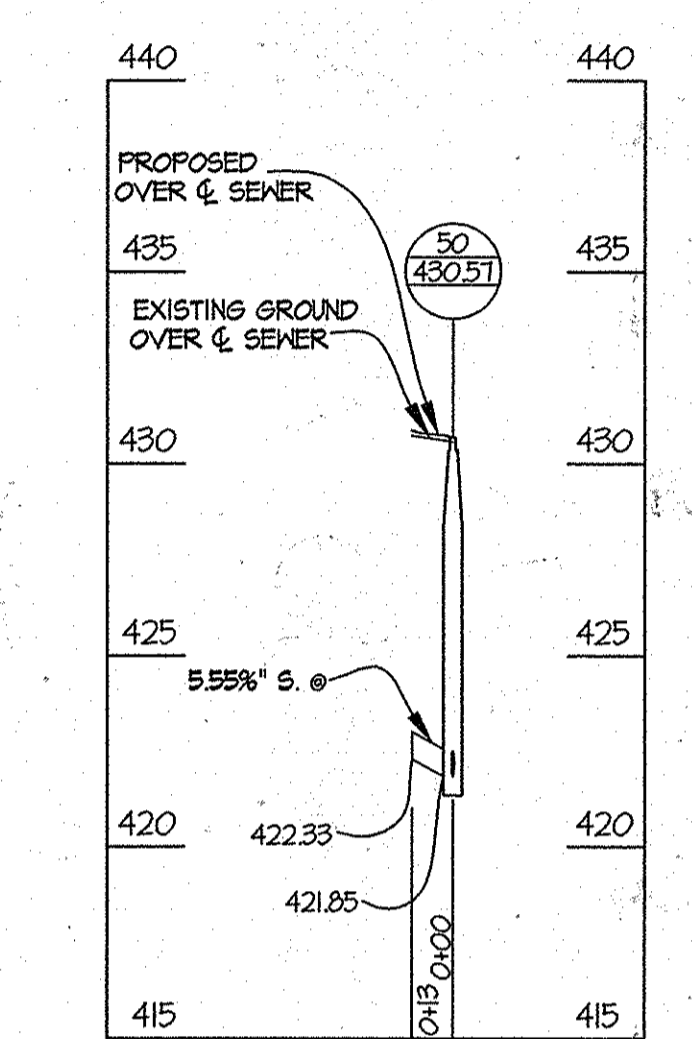
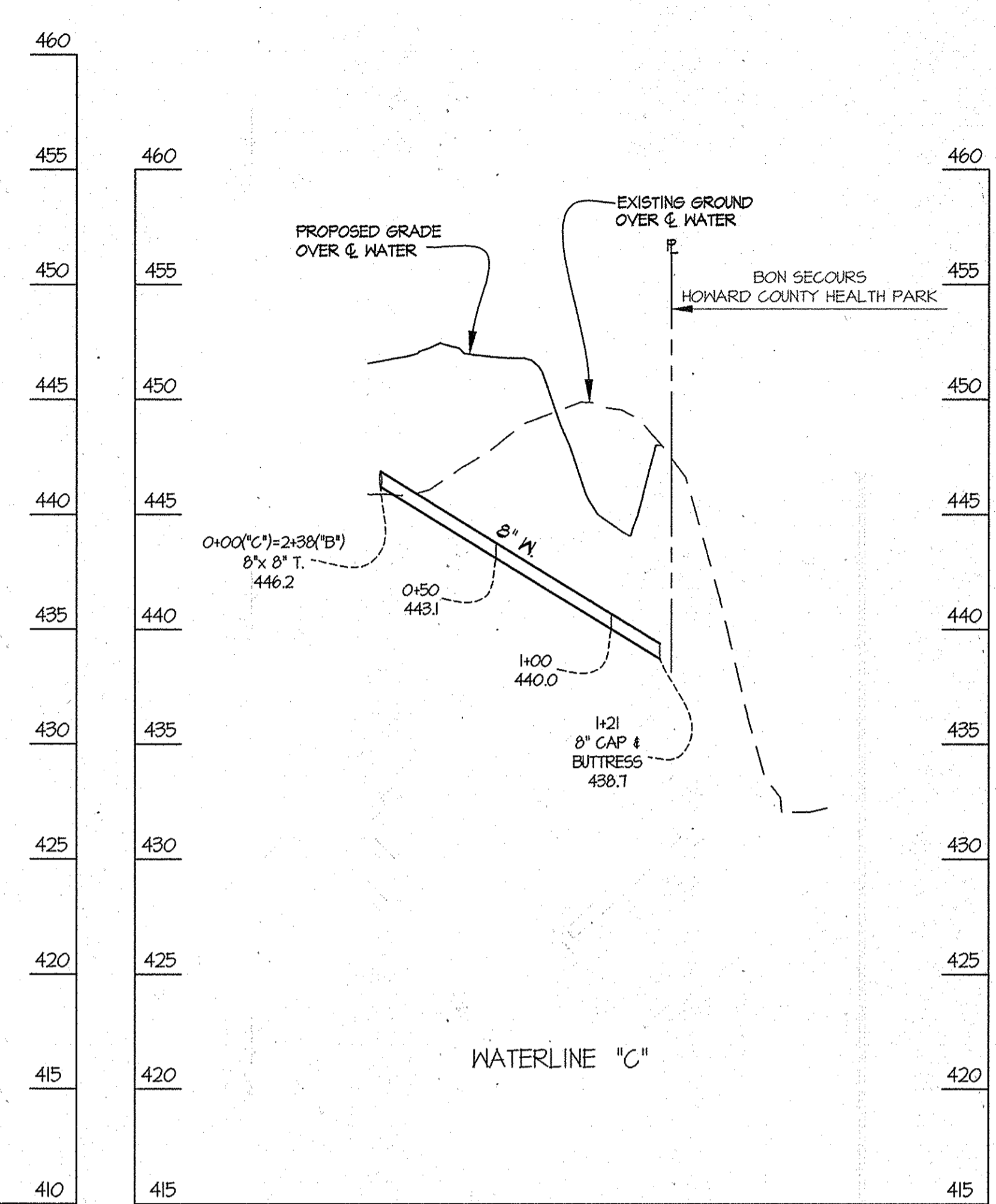
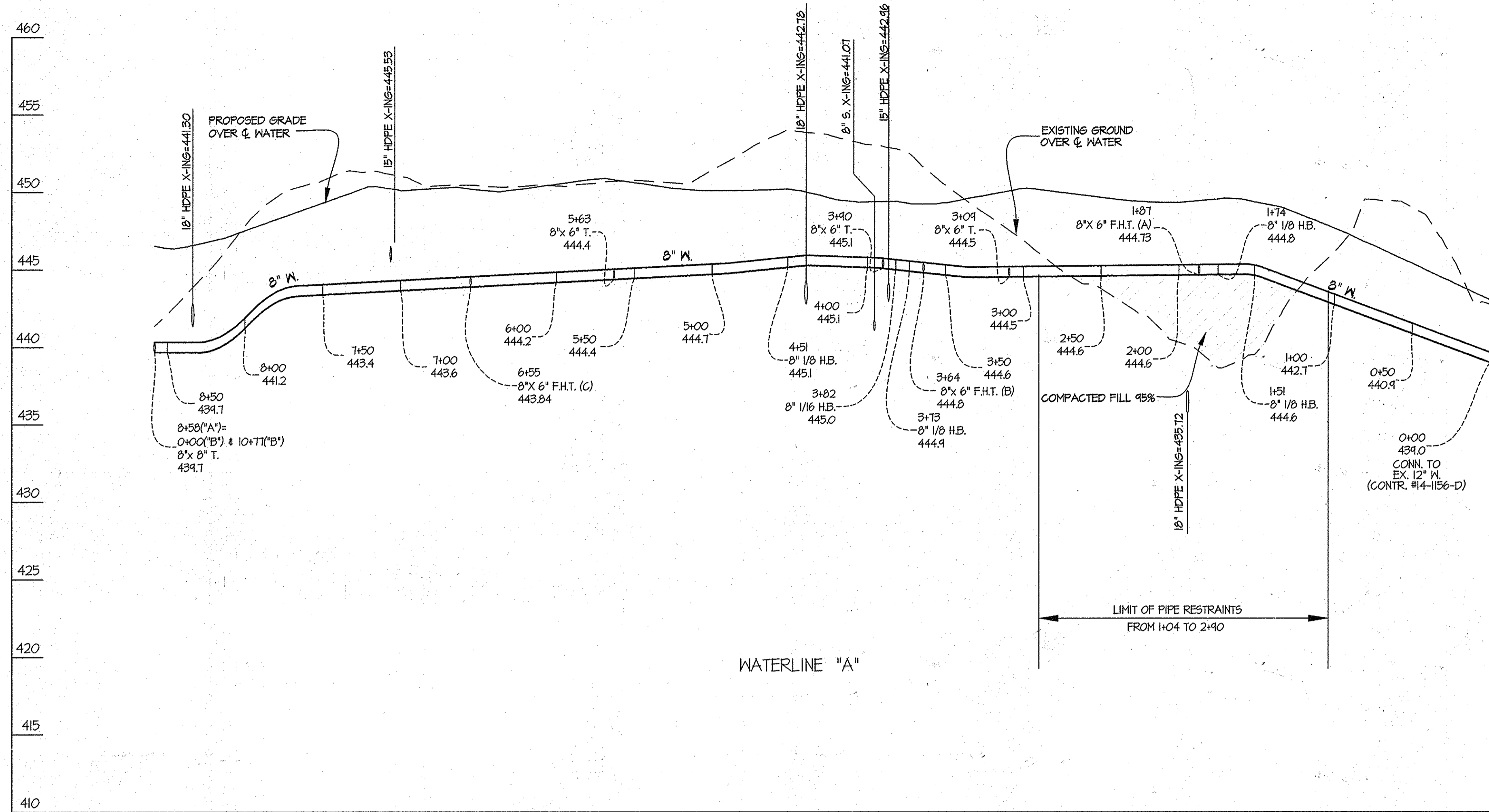
BY NO AS-SULET
 REVISION
 DATE 2-2-2014

WATER & SEWER EXTENSION
 PLAN

**THE GATHERINGS at
 ELLICOTT MILLS**
 CONTRACT No. 14-4738-D
 PARCEL A
 PLAT No.
 HOWARD COUNTY, MARYLAND
 ELECTION DISTRICT No. 2

SCALE
 1"=50'
 SHEET
 2 OF 3

L:\CAD\DRAWINGS\11005\PLANS BY QLP\WATER\11005R2.dwg
 PLOTTED: 7/26/2012 1:55 PM, LAST SAVED: 7/26/2012 1:53 PM, PLOTTED BY: Don Sweeney
 © GLW 2012



FOR PUBLIC WATER & SEWER PLAN SEE SHEET 2 OF 3
 FOR PRIVATE STORM DRAIN & SEWER PROFILES SEE SHEET SDP-12-038

ALL PROFILES
 SCALE: 1" = 5' VERT.
 1" = 50' HORIZ.

PREPARED FOR:
 NORTHRIDGE, LLC
 24012 FREDERICK ROAD
 SUITE 200
 CLARKSBURG, MARYLAND 20871
 ATTN: JONATHAN W. SOULE
 301-428-0800

L:\CADD\DRAWINGS\11003\PLANS BY GJM\11003\PROFILES.dwg PLOTTED: 7/25/2012 5:00 PM, LAST SAVED: 7/25/2012 5:00 PM, PLOTTED BY: Dan Sweeney

DEPARTMENT OF PUBLIC WORKS HOWARD COUNTY, MARYLAND 	DEPARTMENT OF PLANNING AND ZONING HOWARD COUNTY, MARYLAND 	GLW Gutschick Little & Weber, P.A. CIVIL ENGINEERS, LAND SURVEYORS, LAND PLANNERS, LANDSCAPE ARCHITECTS 3909 NATIONAL DRIVE - SUITE 200 - BURTONSVILLE OFFICE PARK BURTONSVILLE, MARYLAND 20866 TEL: 301-421-4024 BAL: 410-880-1820 DC/VA: 301-989-2524 FAX: 301-421-4198	DATE JULY, 2012	PROFESSIONAL CERTIFICATION I HEREBY CERTIFY THAT THESE PLANS WERE PREPARED OR APPROVED BY ME, AND THAT I AM A DULY LICENSED PROFESSIONAL ENGINEER UNDER THE LAWS OF THE STATE OF MARYLAND, LICENSE NO. 12975 EXP. DATE: MAY 26, 2014 	G.L.W. No. 11005	BY NO _____	REVISION _____	DATE _____	60' SCALE MAP NO. 17 BLOCK NO. 23	THE GATHERINGS at ELLICOTT MILLS CONTRACT No. 14-4738-D PARCEL A PLAT No. HOWARD COUNTY, MARYLAND ELECTION DISTRICT No. 2	SCALE AS SHOWN SHEET 3 OF 3
			DES. W.S.J. DRN. W.S.J. CHK. DDS		DATE _____	DATE _____	DATE _____				