

QUANTITIES				
ITEMS	ESTIMATED QUANTITIES	AS-BUILT		
		QUANTITIES	TYPE	MANUF./SUPPLIER
8" WATER (PVC C900 DR18)	591 L.F.			
6" WATER (FH LEADS-DIP)	20 L.F.			
1.5" WHC	310 L.F.			
8" 1/8" HB	4 EACH			
FIRE HYDRANT	2 EACH			
FH TEE & VALVE	2 EACH			
8"x8" TS&V	1 EACH			
8" SEWER (DIP)	27 L.F.			
8" SEWER (PVC)	552 L.F.			
MH (G-5.15)	1 EACH			
MH (G-5.12)	4 EACH			
MH (S-1.31)	1 EACH			
4" SHC	354 L.F.			
NAME OF UTILITY CONTRACTOR:				
SURVEY AND DRAFTING DIVISION AS-BUILT DATE:				

PUBLIC WATER AND SEWER MAIN EXTENSIONS

TROTTER POINT

LOTS 1-14 AND OPEN SPACE LOTS 15-18

TAX MAP 43; PARCELS 8, 9 & 135; GRID 2

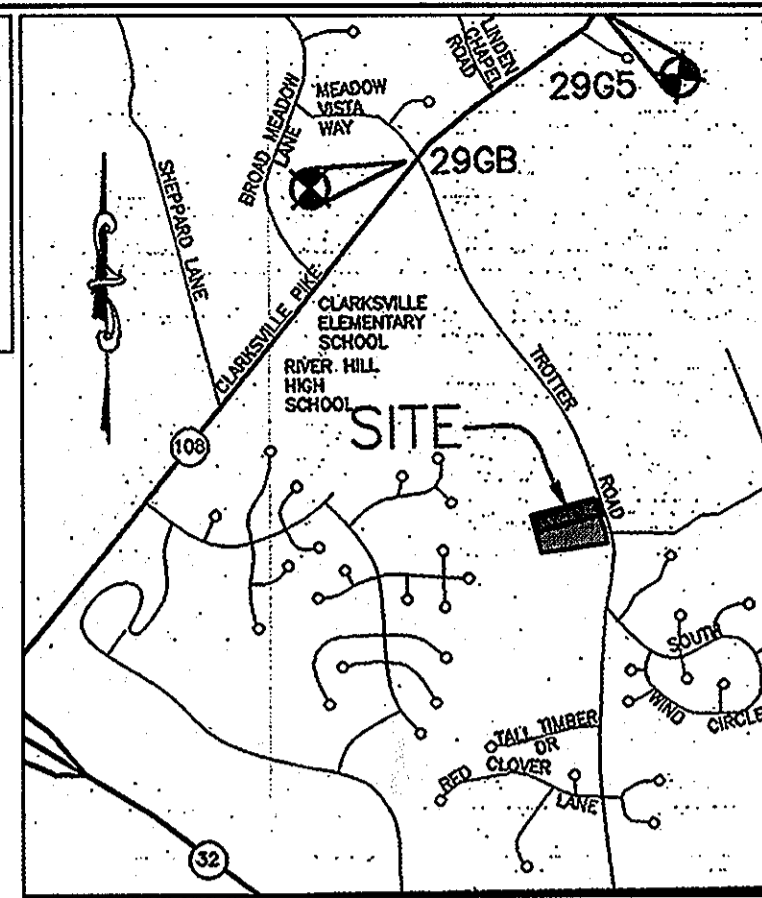
1st ELECTION DISTRICT

HOWARD COUNTY, MARYLAND

CONTRACT NO.: 34-4728-D

BENCHMARKS NAD '83
 HOWARD COUNTY CONTROL
 STATION 296B
 N 566,826.1347
 E 1,335,392.4511
 ELEV. 455.998

HOWARD COUNTY CONTROL
 STATION 2965
 N 568,341.1963
 E 1,335,392.4511
 ELEV. 397.398

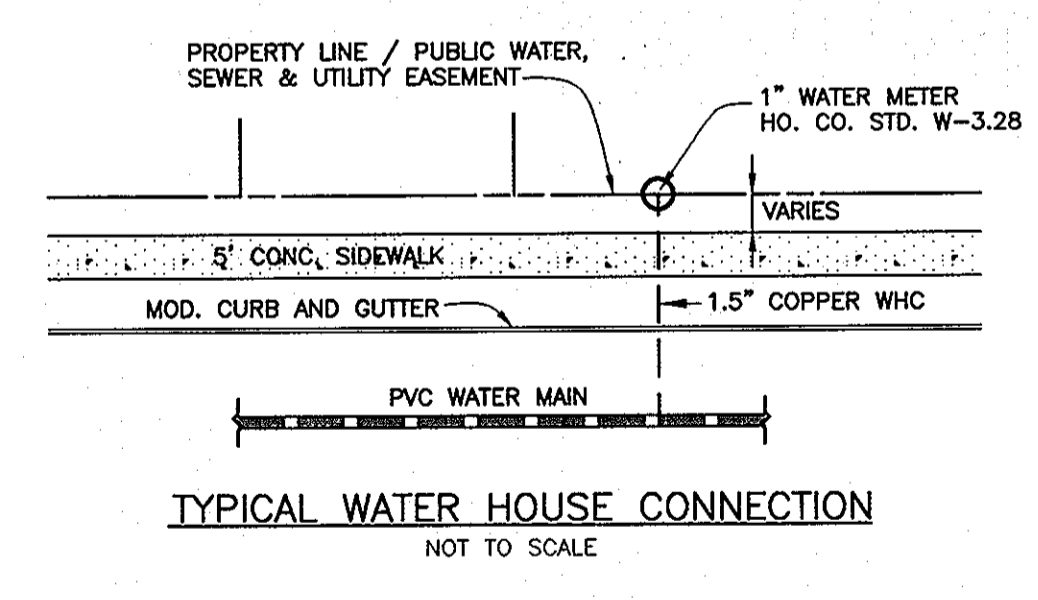
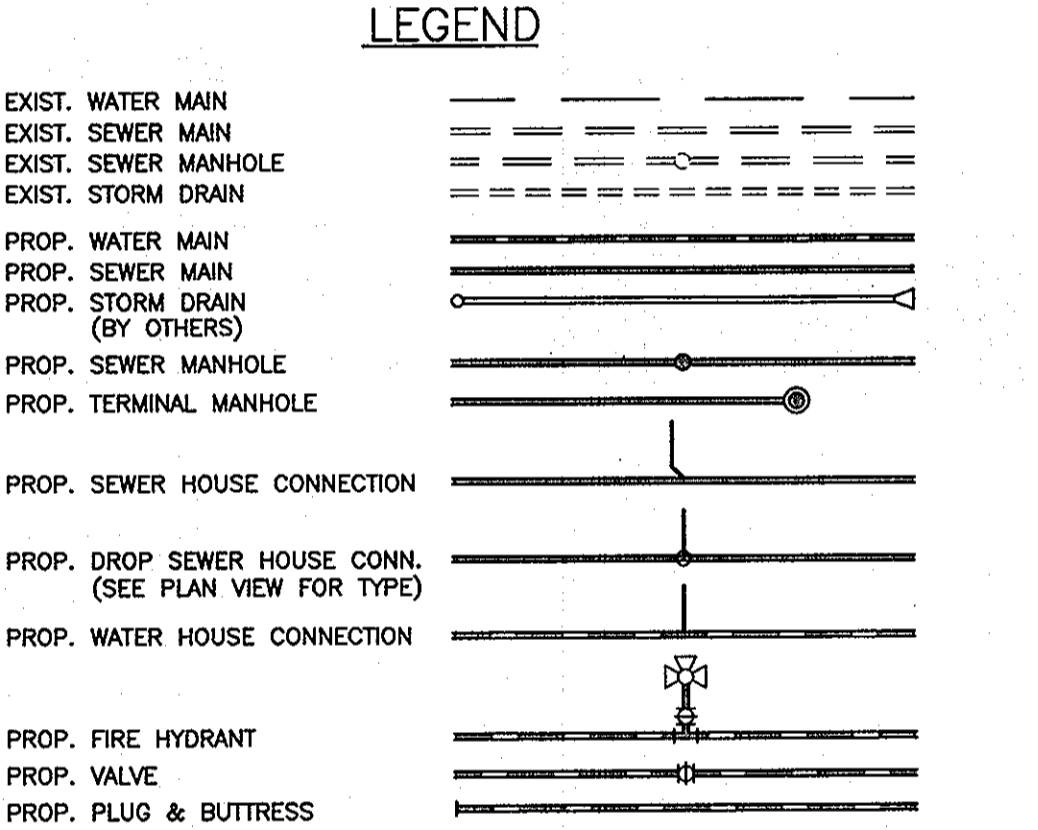


VICINITY MAP
 SCALE: 1"=2000'
 ADC MAP 4934, GRID C-6,7

GENERAL NOTES

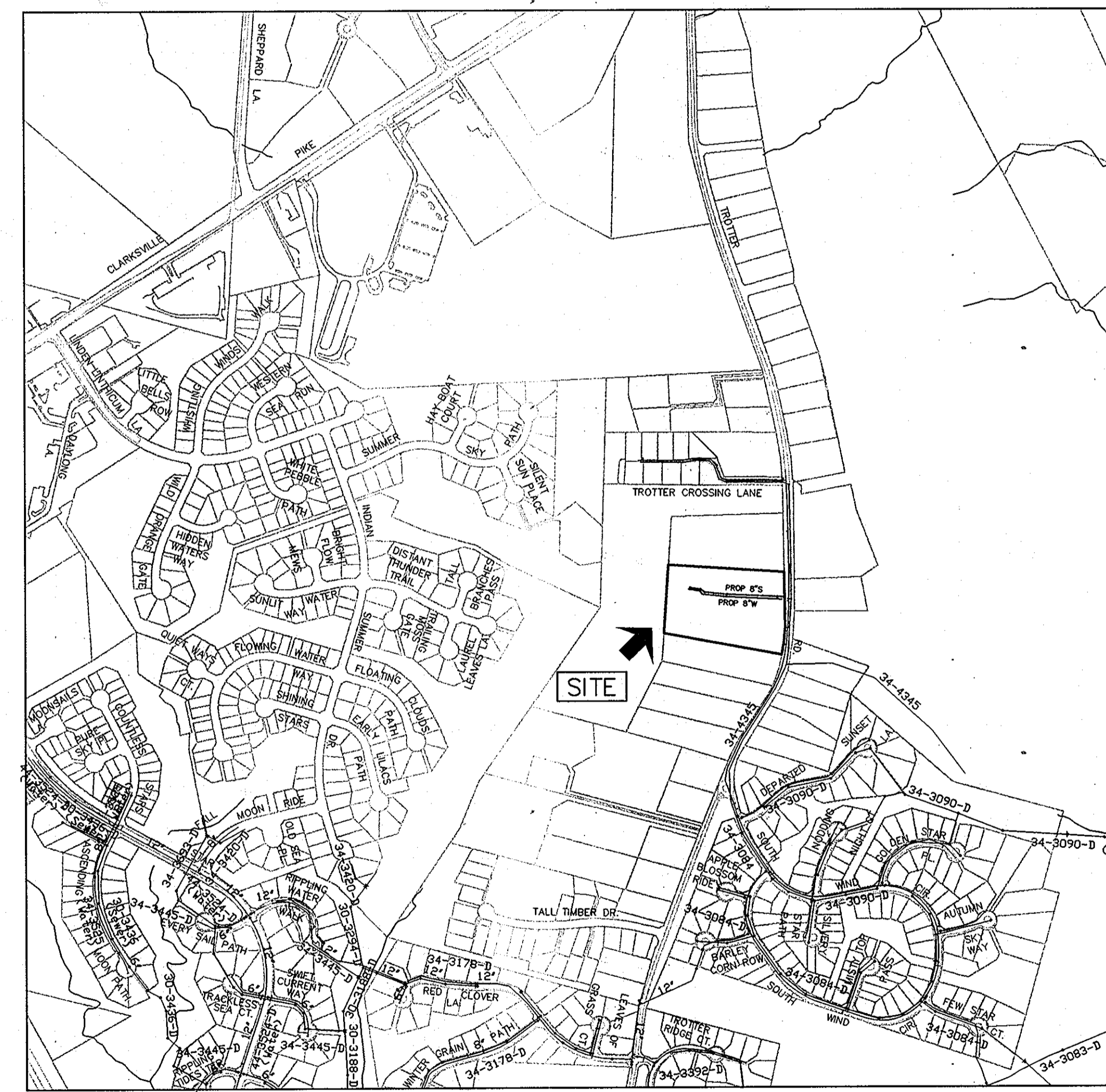
- PART 1 - GENERAL**
- APPROXIMATE LOCATION OF EXISTING MAINS ARE SHOWN. THE CONTRACTOR SHALL TAKE ALL NECESSARY PRECAUTIONS TO PROTECT EXISTING MAINS AND SERVICES AND MAINTAIN UNINTERRUPTED SERVICE. ANY DAMAGE INCURRED SHALL BE REPAIRED IMMEDIATELY TO THE SATISFACTION OF THE ENGINEER AT THE CONTRACTOR'S EXPENSE.
 - TOPOGRAPHIC FIELD SURVEYS WERE PERFORMED ON FEBRUARY 2003 BY WINGS AERIAL MAPPING AND SUPPLEMENTED BY TOPOGRAPHIC SURVEY PERFORMED BY MILDBERG BOENDER & ASSOCIATES IN DECEMBER 2007 AND ARE SHOWN AT 2' INTERVALS.
 - THE COORDINATES SHOWN ON THE DRAWINGS ARE BASED ON MARYLAND STATE REFERENCE SYSTEM, NAD 83/91 AS PROJECTED BY HOWARD COUNTY GEODETIC CONTROL STATIONS 43R1 AND 43B2. ALL VERTICAL CONTROLS ARE BASED ON NAVD 88. VERTICAL CONTROLS PROVIDED ON THE DRAWINGS ARE HO.CO. GEODETIC CONTROL STA. 43R1 & 43B2.
 - ALL PIPE ELEVATIONS SHOWN ARE INVERT ELEVATIONS UNLESS OTHERWISE NOTED ON PLANS.
 - CLEAR ALL UTILITIES BY A MINIMUM OF 12". CLEAR ALL POLES BY 5'-0" MINIMUM OR TUNNEL AS REQUIRED UNLESS OTHERWISE NOTED. THE OWNER HAS CONTACTED THE UTILITY COMPANIES AND HAS MADE ARRANGEMENTS FOR BRACING OF POLES AS SHOWN ON THE DRAWINGS. IN THE EVENT THE CONTRACTOR'S WORK REQUIRES THE BRACING OF ADDITIONAL POLES, ANY COST INCURRED BY THE OWNER FOR BRACING OF ADDITIONAL POLES OR DAMAGES SHALL BE DEDUCTED FROM MONIES OWED THE CONTRACTOR. THE CONTRACTOR SHALL COORDINATE WITH THE UTILITY COMPANIES TO SCHEDULE THE BRACING OF THE POLES.
 - FOR DETAILS NOT SHOWN ON THE DRAWINGS, AND FOR MATERIALS AND CONSTRUCTION METHODS, USE HOWARD COUNTY DESIGN MANUAL VOLUME IV, STANDARD SPECIFICATIONS AND DETAILS FOR CONSTRUCTION (LATEST EDITION). THE CONTRACTOR SHALL HAVE A COPY OF VOLUME IV ON THE JOB.
 - WHERE TEST PITS HAVE BEEN MADE ON EXISTING UTILITIES, THEY ARE NOTED BY THE SYMBOL AT THE LOCATIONS OF THE TEST PITS. A NOTE OR NOTES CONTAINING THE RESULTS OF THE TEST PIT OR PITS IS INCLUDED ON THE DRAWINGS. EXISTING UTILITIES IN THE VICINITY OF THE PROPOSED WORK FOR WHICH TEST PITS HAVE NOT BEEN DUG SHALL BE LOCATED BY THE CONTRACTOR TWO WEEKS IN ADVANCE OF CONSTRUCTION OPERATIONS AT HIS OWN EXPENSE.
 - CONTRACTOR SHALL NOTIFY THE FOLLOWING UTILITY COMPANIES OR AGENCIES AT LEAST FIVE WORKING DAYS BEFORE STARTING WORK SHOWN ON THESE PLANS:

AT&T	1-800-252-1133
B&E (CONSTRUCTION SERVICES)	410-850-4620
B&E (EMERGENCY)	410-855-4400
HO. CO. DPW - BUREAU OF UTILITIES	410-313-4900
COLONIAL PIPELINE CO.	410-795-1390
MISS UTILITY	1-800-257-7777
STATE HIGHWAY ADMINISTRATION	410-531-5533
VERIZON	1-800-743-0033/410-224-9210
 - TREES AND SHRUBS ARE TO BE PROTECTED FROM DAMAGE TO MAXIMUM EXTENT. TREES AND SHRUBS LOCATED WITHIN THE CONSTRUCTION STRIP ARE NOT TO BE REMOVED OR DAMAGED BY THE CONTRACTOR.
 - CONTRACTOR SHALL REMOVE TREES, STUMPS AND ROOTS ALONG LINE OF EXCAVATION. PAYMENT FOR SUCH REMOVAL SHALL BE INCLUDED IN THE UNIT PRICE BID FOR CONSTRUCTION OF THE MAIN.
 - THE CONTRACTOR SHALL NOTIFY THE BUREAU OF HIGHWAYS, HOWARD COUNTY AT (410) 313-7450 AT LEAST FIVE WORKING DAYS BEFORE OPEN CUTTING OR BORING/JACKING OF ANY COUNTY ROAD FOR LAYING WATER/SEWER MAINS HOUSE CONNECTIONS. THE APPROVAL OF THESE DRAWINGS WILL CONSTITUTE COMPLIANCE WITH DPW REQUIREMENTS PER SECTION 18.114(a) OF THE HOWARD COUNTY CODE.
- PART 2 - WATER**
- ALL WATER MAINS TO BE PVC C900 DR18 UNLESS OTHERWISE NOTED.
 - TOPS OF ALL WATER MAINS TO HAVE A MINIMUM OF 3'-6" COVER UNLESS OTHERWISE NOTED.
 - VALVES ADJACENT TO TEES SHALL BE STRAPPED TO TEES.
 - ALL FITTINGS SHALL BE BUTTRESSED OR ANCHORED WITH CONCRETE IN ACCORDANCE WITH THE STANDARD DETAILS UNLESS OTHERWISE PROVIDED FOR ON THE DRAWINGS.
 - FIRE HYDRANTS SHALL BE SET TO THE BURY LINE ELEVATIONS SHOWN ON THE DRAWINGS. ALL FIRE HYDRANTS SHALL BE INSTALLED IN ACCORDANCE WITH STANDARD DETAILS. THE SOIL AROUND THE FIRE HYDRANT SHALL BE COMPACTED IN ACCORDANCE WITH SECTION 1000 AND 1005 OF THE STANDARD SPECIFICATIONS.
 - THE CONTRACTOR SHALL NOT OPERATE ANY WATER MAIN VALVES ON THE EXISTING WATER SYSTEM.
 - TRACE WIRE AND CONTINUITY TEST STATIONS SHALL BE INSTALLED ON ALL D.I.P. AND P.V.C. WATER MAINS IN ACCORDANCE WITH THE HOWARD COUNTY DESIGN MANUAL.
 - FOR PVC WATER MAINS, ALL RECORDS FOR THE QUANTITY CONTROL AND QUALIFICATION TEST REQUIREMENTS NOTED IN SECTION 5.1 OF AWWA STANDARD C900 FOR PVC PRESSURE PIPE SHALL BE SUBMITTED WITH THE PIPE MATERIAL CERTIFICATIONS OR SHOP DRAWINGS PRIOR TO APPROVAL OF MATERIAL FOR USE. TEST RECORDS SHALL BE FOR THE PIPE TO BE INSTALLED. ALL PVC PIPE SHALL CONTAIN MARKINGS TO ALLOW CROSS REFERENCING OF THE PIPE SUPPLIED TO THE TEST RECORD SHEET.
 - UNLESS OTHERWISE NOTED ON THE PLANS OR IN THE SPECIFICATIONS, SEVENTEEN (17) POUND SACRIFICIAL ANODES SHALL BE INSTALLED ON ALL VALVES AND METALIC FITTINGS USED WITH PVC WATER MAINS IN ACCORDANCE WITH VOLUME IV, STANDARD SPECIFICATIONS AND DETAILS FOR CONSTRUCTION. MAGNESIUM ANODES SHALL BE INSTALLED ON ALL VALVES AND DUCTILE IRON FITTINGS INCLUDING RESTRAINTS AND HARNESSSES. ZINC ANODES SHALL BE INSTALLED ON ALL STAINLESS STEEL FITTINGS AND SADDLES USED WITH PVC MAINS. ALL "TEES" USED WITH PVC MAINS SHALL BE DUCTILE IRON.
 - FIRE SPRINKLER SYSTEMS FOR ALL SINGLE FAMILY DWELLINGS SHALL HAVE A MINIMUM OF A 1-1/2" CONNECTION WITH A 1" OUTSIDE METER SETTING.
- PART 3 - SEWER**
- ALL SEWER MAINS SHALL BE D.I.P. OR P.V.C. UNLESS OTHERWISE NOTED.
 - ALL MANHOLES SHALL BE 4' - 0" INSIDE DIAMETER UNLESS OTHERWISE NOTED.
 - FORCE MAINS SHALL BE D.I.P. ONLY.
 - MANHOLES SHOWN WITH 12" AND 16" WALLS ARE FOR BRICK MANHOLES ONLY.
 - MANHOLES DESIGNATED W.T. IN PLAN AND PROFILE SHALL HAVE WATERTIGHT FRAME AND COVER, STANDARD DETAIL G-5.52. WHERE WATERTIGHT MANHOLE FRAMES AND COVERS ARE USED, SET TOP OF FRAME 1'-6" ABOVE FINISHED GRADE UNLESS OTHERWISE NOTED ON THE DRAWINGS.
 - HOUSE(S) WITH THE SYMBOL "C.N.S." INDICATES THAT CELLAR CANNOT BE SERVED.



NOTE:
 ALL WATER HOUSE CONNECTIONS ARE TO BE 1.5" WITH A 1" METER (OUTSIDE SETTING).

SHEET INDEX	
NO.	DESCRIPTION
1	TITLE SHEET PUBLIC WATER & SEWER MAINS
2	PLAN VIEW PUBLIC WATER & SEWER MAINS
3	PROFILE VIEW PUBLIC WATER & SEWER MAINS



TYPE OF BUILDING:	SFD
NO. OF BUILDABLE LOTS:	14
NUMBER OF SHC'S:	14
NUMBER OF WHC'S:	14
DRAINAGE AREA:	MIDDLE PATUXENT
TREATMENT PLANT:	MIDDLE PATUXENT WRP
WATER ZONE:	630
TEST GRADIENT:	780

NOTE: CONTRACTORS TO EXERCISE EXTREME CAUTION WHEN WORKING IN AREA OF EXIST. OVERHEAD LINES ALONG TROTTER ROAD

NOTE: HOUSE CONNECTIONS TO BE SIZED ACCORDINGLY:
 SINGLE WHC = 1-1/2"
 SINGLE SHC = 4"

NOTE: HO. CO. STD. DETAILS C-5.01 THRU C-5.03 ARE NOT APPLICABLE; THIS PROJECT IS NOT WITHIN AN AREA IDENTIFIED AS HAVING CORROSIVE SOILS

NOTE: ALL JOINTS AND CONNECTIONS LOCATED WITHIN STRUCTURAL FILL AREAS SHALL BE MECHANICALLY RESTRAINED IN ACCORDANCE WITH HOWARD COUNTY DESIGN MANUAL, VOLUME IV, STANDARD SPECIFICATIONS AND DETAILS FOR CONSTRUCTION (LATEST EDITION)

THIS DEVELOPMENT PLAN IS APPROVED FOR SOIL EROSION AND SEDIMENT CONTROL BY THE SOIL CONSERVATION DISTRICT.

John R. Roberts 2/26/13
 HOWARD SOIL CONSERVATION DISTRICT DATE

SEDIMENT CONTROL MEASURES FOR THIS CONTRACT WILL BE IMPLEMENTED IN ACCORDANCE WITH SECTION 308 OF THE HOWARD COUNTY STANDARD SPECIFICATIONS AND AS PER APPROVED DEVELOPMENT PLANS F-13-004

OWNER/DEVELOPER
TROTTER POINT, L.L.C.
 9695 NORFOLK AVENUE
 LAUREL, MD 20723
 (410) 792-2565

PROFESSIONAL CERTIFICATION:
 I hereby certify that these documents were prepared or approved by me, and that I am a duly licensed professional engineer under the laws of the State of Maryland, License No. 2859, Expiration Date: 7-25-2015

LOCATION MAP
 SCALE: 1" = 600'

DEPARTMENT OF PUBLIC WORKS
 HOWARD COUNTY, MARYLAND

Silvia Chen 2/15/13
 CHIEF, BUREAU OF UTILITIES DATE

DEPARTMENT OF PLANNING AND ZONING
 HOWARD COUNTY, MARYLAND

[Signature] 3/4/13
 CHIEF, DEVELOPMENT ENGINEERING DIVISION DATE

BENCHMARK ENGINEERING, INC.
 8480 BALTIMORE NATIONAL PIKE & SUITE 418 ELLICOTT CITY, MARYLAND 21043
 (P) 410-465-9105 (F) 410-465-0844
 60 THOMAS JOHNSON BOULEVARD FREDERICK, MARYLAND 21702
 (P) 301-371-3505 (F) 301-371-3506
 WWW.BE-CVLENGINEERING.COM

STATE OF MARYLAND
 PROFESSIONAL ENGINEER
 [Signature] 2/20/13

DBS: MCR/BFC					
DRN: MCR/BFC					
CHK: BFC					
DATE: 2/01/2013	BY	NO.	REVISIONS	DATE	600 SCALE MAPS: 35

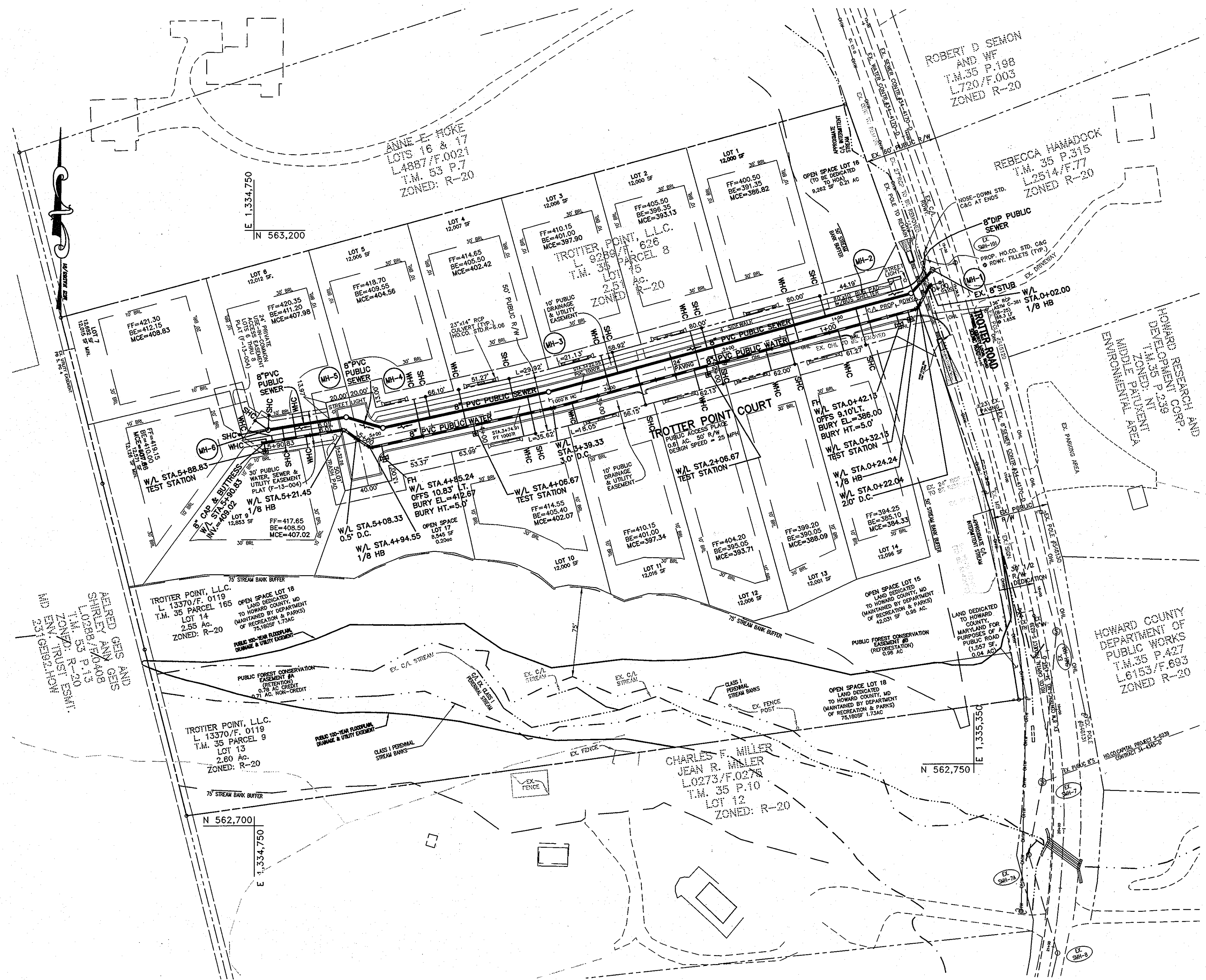
PUBLIC WATER AND SEWER TITLE SHEET

BLOCKS: 2

TROTTER POINT
 LOTS 1-14 & OPEN SPACE LOTS 15-18
 TAX MAP 43; PARCELS 8, 9 & 165; GRID 2
 FIFTH ELECTION DISTRICT
 HOWARD COUNTY, MARYLAND
CONTRACT No. 34-4728-D

SCALE:
 AS SHOWN

SHEET NO.
 1 OF 3



WATER AND SEWER PLAN
SCALE: 1" = 50'

WATER SERVICE AS-BUILT LOCATION TABLE

LOT	ADDRESS	LOCATION DIMENSION #1	LOCATION DIMENSION #2
1	- TROTTER POINT COURT		
2	- TROTTER POINT COURT		
3	- TROTTER POINT COURT		
4	- TROTTER POINT COURT		
5	- TROTTER POINT COURT		
6	- TROTTER POINT COURT		
7	- TROTTER POINT COURT		
8	- TROTTER POINT COURT		
9	- TROTTER POINT COURT		
10	- TROTTER POINT COURT		
11	- TROTTER POINT COURT		
12	- TROTTER POINT COURT		
13	- TROTTER POINT COURT		
14	- TROTTER POINT COURT		

SEWER SERVICE AS-BUILT LOCATION TABLE

LOT	ADDRESS	LOCATION DIMENSION #1	LOCATION DIMENSION #2
1	- TROTTER POINT COURT		
2	- TROTTER POINT COURT		
3	- TROTTER POINT COURT		
4	- TROTTER POINT COURT		
5	- TROTTER POINT COURT		
6	- TROTTER POINT COURT		
7	- TROTTER POINT COURT		
8	- TROTTER POINT COURT		
9	- TROTTER POINT COURT		
10	- TROTTER POINT COURT		
11	- TROTTER POINT COURT		
12	- TROTTER POINT COURT		
13	- TROTTER POINT COURT		
14	- TROTTER POINT COURT		

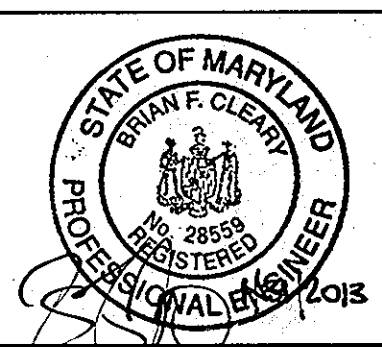
SEWER MANHOLE - STRUCTURE SCHEDULE

NO.	TYPE	LOCATION	INVERT IN	SHC INV.	INVERT OUT	TOP ELEV.	HO.CO. STD.	REMARKS
MH-1	4.0" DOGHOUSE	TROTTER POINT COURT STA.0+12.63 OFFS 21.33' RT.	376.28	-	376.28	385.02	G-5.15	EX. CONTR. #34-4170-D
MH-2	STD. 4.0" PRE-CAST	TROTTER POINT COURT STA.0+35.16 OFFS 7.0' RT.	376.90	-	376.80	384.87	G-5.12	-
MH-3	STD. 4.0" PRE-CAST	TROTTER POINT COURT STA.3+48.73 OFFS 6.7' RT.	396.25	-	396.15	407.05	G-5.12	-
MH-4	STD. 4.0" PRE-CAST	TROTTER POINT COURT STA.4+90.28 OFFS 7.0' RT.	400.60	400.93	400.50	412.78	G-5.12	-
MH-5	STD. 4.0" PRE-CAST	TROTTER POINT COURT STA.5+18.28 OFFS 22.3' RT.	401.35	-	401.25	412.95	G-5.12	-
MH-6	TERMINAL	UC DRIVEWAY N 563,031.8 E 1,334,761.9	-	(3)402.98	402.65	415.40	S-1.31	-

NOTES:
1. STRUCTURE LOCATION FOR MANHOLES IS AT THE CENTER OF THE STRUCTURE.

OWNER/DEVELOPER
TROTTER POINT, L.L.C.
9695 NORFOLK AVENUE
LAUREL, MD 20723
(410) 792-2565

PROFESSIONAL CERTIFICATION
I hereby certify that these documents were prepared or approved by me, and that I am a duly licensed professional engineer under the laws of the State of Maryland.
License No. 28359; Expiration Date: 7-22-2013



BENCHMARK ENGINEERING, INC.
8480 BALTIMORE NATIONAL PIKE A SUITE 418
ELLSWORTH CITY, MARYLAND 21043
PHONE: 410-465-8100 FAX: 410-465-8844

NOTE: HOUSE CONNECTIONS TO BE SIZED ACCORDINGLY:
SINGLE WHC = 1-1/2"
SINGLE SHC = 4"

NOTE: CONTRACTORS TO EXERCISE EXTREME CAUTION WHEN WORKING IN AREA OF EXIST. OVERHEAD LINES ALONG TROTTER ROAD

NOTE: ALL JOINTS AND CONNECTIONS LOCATED WITHIN STRUCTURAL FILL AREAS SHALL BE MECHANICALLY RESTRAINED IN ACCORDANCE WITH HOWARD COUNTY DESIGN MANUAL, VOLUME IV, STANDARD SPECIFICATIONS AND DETAILS FOR CONSTRUCTION (LATEST EDITION)

DEPARTMENT OF PUBLIC WORKS
HOWARD COUNTY, MARYLAND
S.W. Chen
CHIEF, BUREAU OF UTILITIES

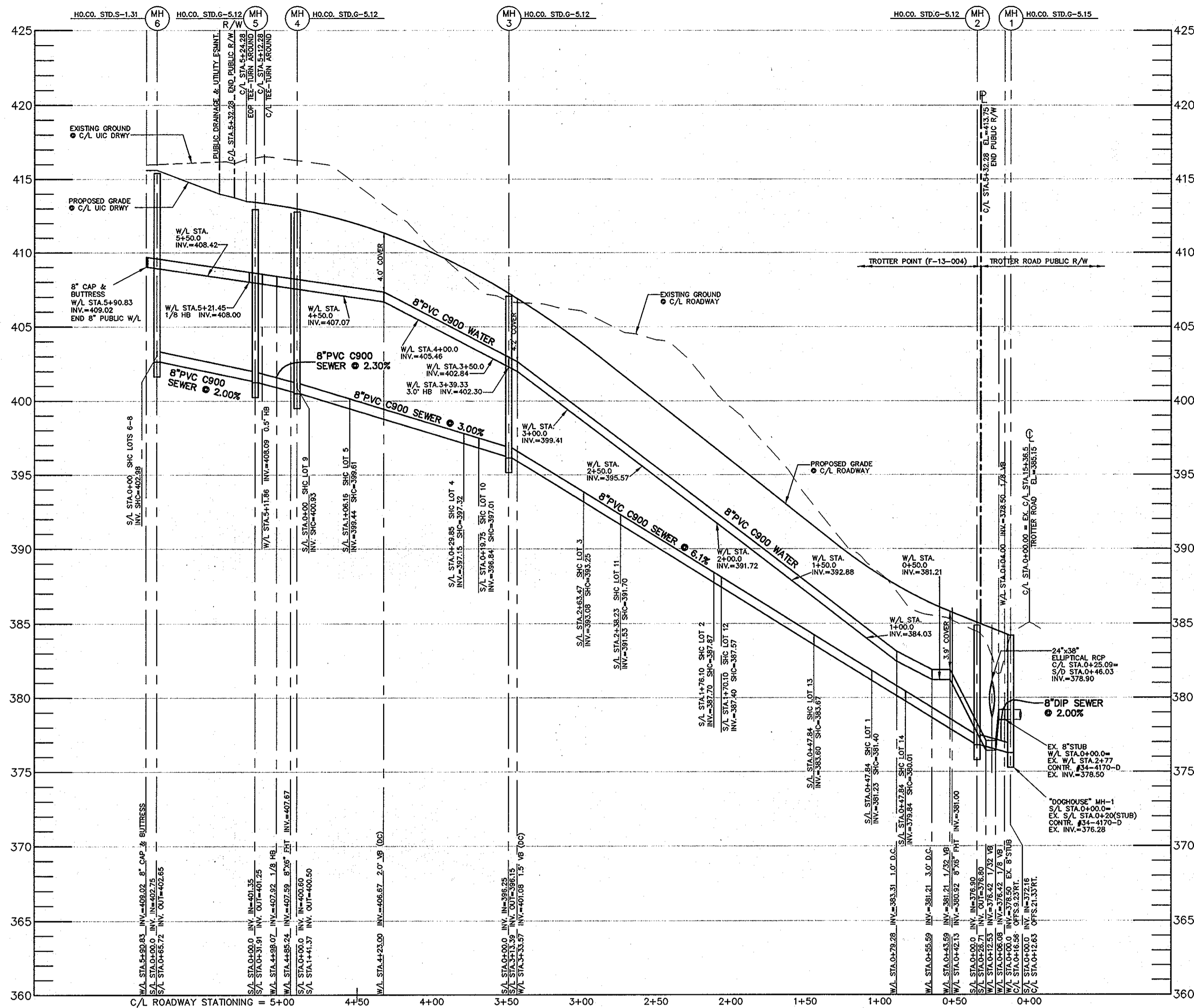
DEPARTMENT OF PLANNING AND ZONING
HOWARD COUNTY, MARYLAND
[Signature]
CHIEF, DEVELOPMENT ENGINEERING DIVISION

DES:	MCR/BFC				
DRN:	MCR/BFC				
CHK:	BFC				
DATE:	2/01/2013	BY:	NO.	REVISIONS	DATE

PUBLIC WATER AND SEWER PLAN VIEW

TROTTER POINT
LOTS 1-14 & OPEN SPACE LOTS 15-18
TAX MAP 43; PARCELS 8, 9 & 165; GRID 2
FIFTH ELECTION DISTRICT
HOWARD COUNTY, MARYLAND
CONTRACT No.34-4728-D

SCALE:
AS SHOWN
SHEET NO.
2 OF 3



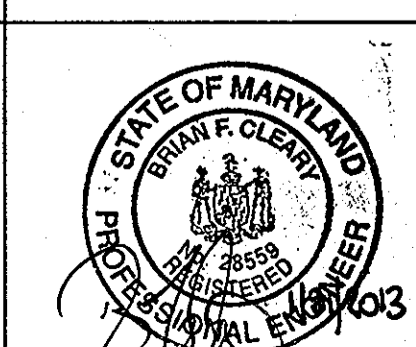
UTILITY PROFILE - TROTTER POINT COURT
 VERTICAL SCALE: 1" = 5'
 HORIZONTAL SCALE: 1" = 50'

Lot Number	W/L Sta.	Invert @ W/M	Invert @ RW/PUE	Notes
1	1+26.54	388.52	388.82	
2	2+11.68	392.63	392.93	
3	2+89.04	398.58	398.88	
4	4+12.64	406.13	406.43	
5	4+50.86	407.08	407.38	
6	5+61.81	408.73	409.03	
7	5+81.83	408.89	409.19	
8	5+86.83	408.96	409.26	
9	5+53.47	408.60	408.90	
10	3+67.78	403.78	404.08	
11	3+22.67	401.17	401.47	
12	2+17.00	393.04	393.34	
13	1+54.93	388.27	388.57	
14	0+92.43	383.47	383.77	

Lot Number	S/L Sta.	Invert @ main or manhole	Invert @ SHC	Drop House	Invert @ top of standpipe	SHC Slope	Invert @ RW/PUE	Minimum Cellar	Notes
1	0+73.97	381.45	381.62	no	381.98	2.00%	388.82	388.82	
2	1+76.10	387.70	387.87	no	388.23	2.00%	393.13	393.13	
3	2+53.47	392.63	392.80	no	393.16	2.00%	397.90	397.90	
4	0+29.85	397.15	397.32	no	397.68	2.00%	402.42	402.42	
5	1+01.16	399.29	399.46	no	399.82	2.00%	404.56	404.56	
6	MH-6	402.98	N/A	no	403.23	2.00%	407.98	407.98	
7	MH-6	402.98	N/A	no	403.26	2.00%	408.83	408.83	
8	MH-6	402.98	N/A	no	403.43	2.00%	407.86	407.86	
9	0+53.85	402.43	402.60	no	403.00	2.00%	407.02	407.02	
10	0+18.10	395.50	395.57	no	397.61	2.00%	402.07	402.07	
11	2+38.23	391.53	391.70	no	392.34	2.00%	397.34	397.34	
12	1+71.10	387.40	387.57	no	388.21	2.00%	393.71	393.71	
13	1+09.10	383.60	383.77	no	384.09	1.00%	388.09	388.09	SHC @ 1.0%
14	0+47.84	379.84	380.01	no	380.33	1.00%	384.33	384.33	SHC @ 1.0%

OWNER/DEVELOPER
 TROTTER POINT, L.L.C.
 9695 NORFOLK AVENUE
 LAUREL, MD 20723
 (410) 792-2565

PROFESSIONAL CERTIFICATION:
 I hereby certify that these documents were prepared or approved by me, and that I am a duly licensed professional engineer under the laws of the State of Maryland.
 License No. 28539; Expiration Date: 7-23-2013



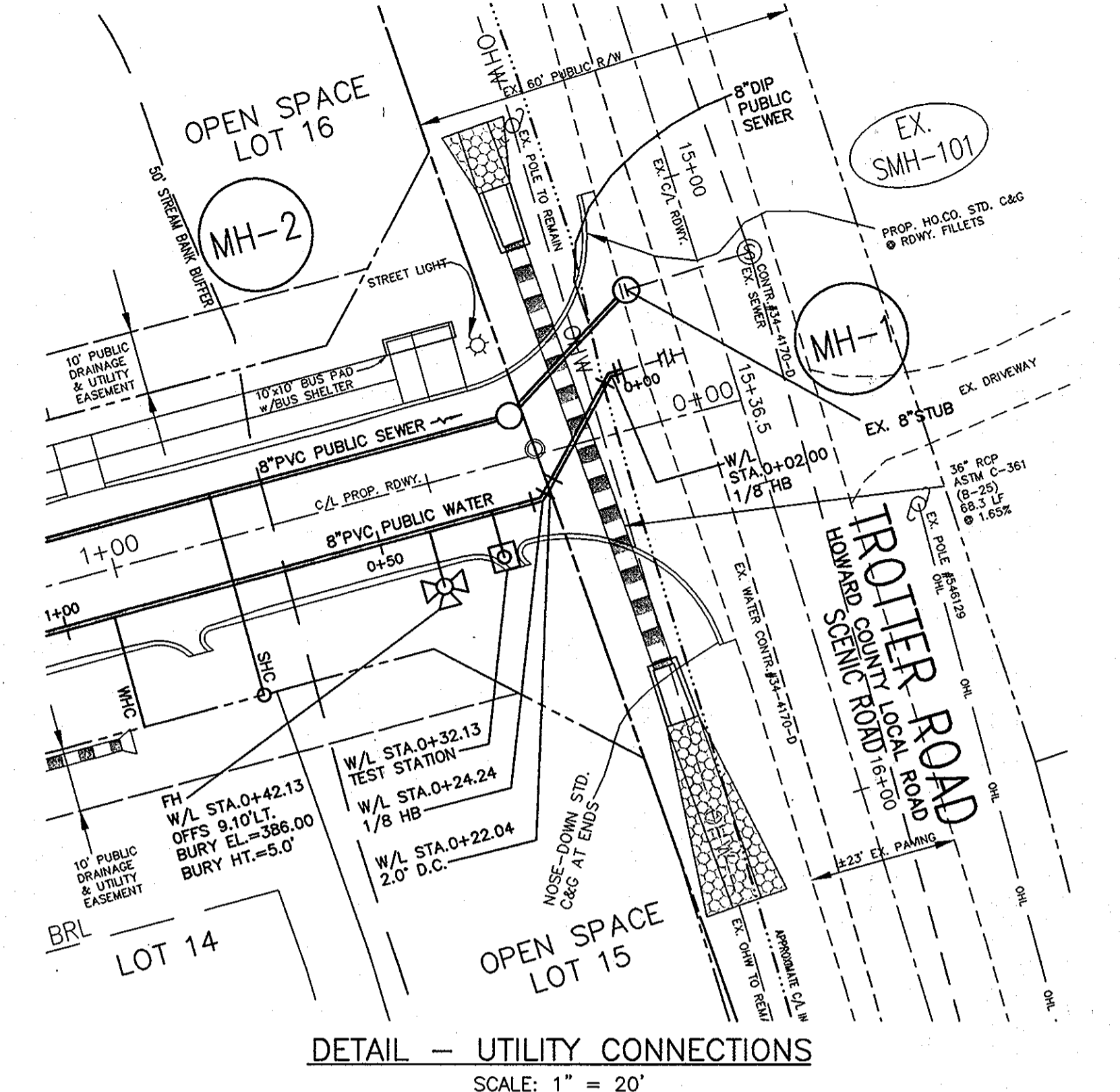
BENCHMARK
 ENGINEERS, INC.
 8480 BALTIMORE NATIONAL PIKE & SUITE 418
 ELICOTT CITY, MARYLAND 21043
 PHONE: 410-465-6105 FAX: 410-465-6544

DES:	MCR/BFC				
DRN:	MCR/BFC				
CHK:	BFC				
DATE:	2/01/2013	BY:	NO.	REVISIONS	DATE

NOTE: HOUSE CONNECTIONS TO BE SIZED ACCORDINGLY:
 SINGLE WHC = 1-1/2"
 SINGLE SHC = 4"

NOTE: CONTRACTORS TO EXERCISE EXTREME CAUTION WHEN WORKING IN AREA OF EXIST. OVERHEAD LINES ALONG TROTTER ROAD

NOTE: ALL JOINTS AND CONNECTIONS LOCATED WITHIN STRUCTURAL FILL AREAS SHALL BE MECHANICALLY RESTRAINED IN ACCORDANCE WITH HOWARD COUNTY DESIGN MANUAL, VOLUME IV, STANDARD SPECIFICATIONS AND DETAILS FOR CONSTRUCTION (LATEST EDITION)



DETAIL - UTILITY CONNECTIONS
 SCALE: 1" = 20'

DEPARTMENT OF PUBLIC WORKS
 HOWARD COUNTY, MARYLAND
 S. J. CLEARY
 CHIEF, BUREAU OF UTILITIES
 DATE: 2/15/13

DEPARTMENT OF PLANNING AND ZONING
 HOWARD COUNTY, MARYLAND
 M. G. MCGEE
 CHIEF, DEVELOPMENT ENGINEERING DIVISION
 DATE: M.G.

PUBLIC WATER AND SEWER
 PROFILE VIEW
 DATE: 2/01/2013 BY: NO. REVISIONS DATE: 600 SCALE MAPS: 35 BLOCKS: 2

TROTTER POINT
 LOTS 1-14 & OPEN SPACE LOTS 15-18
 TAX MAP 43; PARCELS 8, 9 & 165; GRID 2
 FIFTH ELECTION DISTRICT
 HOWARD COUNTY, MARYLAND
 CONTRACT No. 34-4728-D
 SCALE: AS SHOWN
 SHEET NO. 3 OF 3