

QUANTITIES				
ITEM	ESTIMATED	QUANTITIES	AS-BUILT	SUPPLIER
4" PVC	174 L.F.	674 L.F.	SDR-35	NATIONAL PIPE
8" PVC	1,791 L.F.	1751 L.F.	SDR-35	"
8" PLUG	7 EACH	7 EA.	SWR	MULTI FITTINGS
MANHOLES	19 EACH	15 EA.	PRECAST	CONTRACTOR PRE.
12" W	1,907 L.F.	1,903 L.F.	C-400 DR-18	NORTH AMERICAN
8" W	421 L.F.	421 L.F.	"	"
6" W	121 L.F.	121 L.F.	"	"
1" DEFLECTION COUPLING	2 EACH	2 EA.	SWR	CERTAINTEED
1/8" H.B.	4 EACH	4 EA.	MJC153	TYLER/UNION
1/16" H.B.	3 EACH	3 EA.	"	"
1/32" H.B.	6 EACH	6 EA.	"	"
12" TAPPING SLUG	1 EACH	1 EA.	"	AMERICAN FLOW
12" TAPPING VALVE	1 EACH	1 EA.	"	"
12" X 12" CROSS	1 EACH	1 EA.	MJC153	TYLER/UNION
12" X 8" TEE	2 EACH	2 EA.	"	"
12" X 6" TEE	4 EACH	4 EA.	"	"
8" X 6" TEE	2 EACH	2 EA.	"	"
12" VALVE	7 EACH	7 EA.	MT 250	AMERICAN FLOW
8" VALVE	7 EACH	7 EA.	"	"
6" VALVE	2 EACH	2 EA.	"	"
12" PLUG	2 EACH	2 EA.	MJC153	TYLER/UNION
8" PLUG	7 EACH	7 EA.	"	"
CONTINUITY TEST STATION	6 EACH	6 EA.	8x30 CONCRETE	HORNE CONCRETE
FIRE HYDRANT	6 EACH	6 EA.	BB4 B	AMERICAN FLOW

NAME OF UTILITY CONTRACTOR: C.C.S. INC.  
SURVEY & DRAFTING DIVISION AS-BUILT DATE:

**BENCHMARK INFORMATION**

B.M.#1 - HOWARD COUNTY CONTROL STATION #38GA - HORIZONTAL - NAD '83  
(LOCATED ALONG RAILROAD AVENUE, JUST SOUTH OF RYAN AVENUE. APPROX. 22.6' NORTH FROM THE CENTER LINE OF RAILROAD AVENUE.)  
N 555,097.3373  
E 1,390,132.0933  
ELEVATION = 80.783 - VERTICAL - (NAVD '86)

B.M.#2 - HOWARD COUNTY CONTROL STATION #43CB - HORIZONTAL - (NAD '83)  
(LOCATED ALONG THE SOUTHWEST CORNER OF DORSEY ROAD, APPROX. 2.2' OFF THE EDGE OF PAVING. APPROX. 46.7' EAST OF POWER POLE NO. 19)  
N 552,084.2468  
E 1,382,282.4190  
ELEVATION = 144.391 - VERTICAL - (NAVD '86)

**DEVELOPER'S CERTIFICATION**

I HEREBY CERTIFY THAT ALL DEVELOPMENT AND CONSTRUCTION WILL BE DONE ACCORDING TO THIS PLAN OF DEVELOPMENT AND PLAN FOR EROSION AND SEDIMENT CONTROL AND THAT ALL RESPONSIBLE PERSONNEL INVOLVED IN THE CONSTRUCTION PROJECT WILL HAVE A CERTIFICATE OF ATTENDANCE AT THE DEPARTMENT OF THE ENVIRONMENT APPROVED TRAINING PROGRAM FOR THE CONTROL OF SEDIMENT AND EROSION BEFORE BEGINNING THE PROJECT. I ALSO AUTHORIZE PERIODIC ON-SITE INSPECTION BY THE HOWARD SOIL CONSERVATION DISTRICT OR THEIR AUTHORIZED AGENTS, AS ARE DEEMED NECESSARY.

Paul W. Koebel, FOR:  
PRESTON SCHEFFENACKER 05-11-12  
SIGNATURE OF DEVELOPER DATE

**ENGINEER'S CERTIFICATION**

I HEREBY CERTIFY THAT THIS PLAN FOR EROSION AND SEDIMENT CONTROL REPRESENTS A PRACTICAL AND WORKABLE PLAN BASED ON MY PERSONAL KNOWLEDGE OF THE SITE CONDITIONS AND THAT IT WAS PREPARED IN ACCORDANCE WITH THE REQUIREMENTS OF THE HOWARD SOIL CONSERVATION DISTRICT.

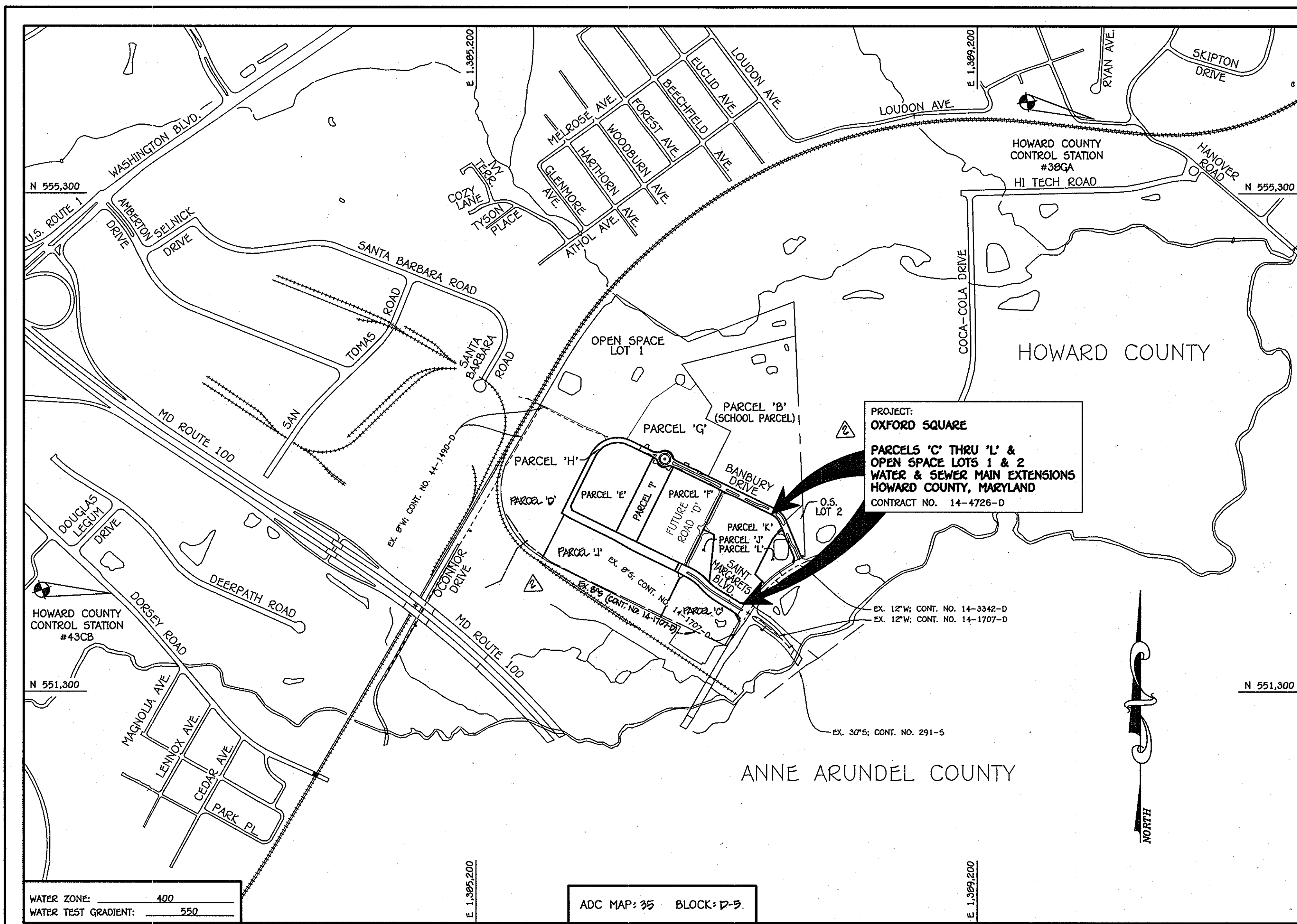
Paul W. Koebel, FOR:  
PRESTON SCHEFFENACKER 05-11-12  
SIGNATURE OF DEVELOPER DATE

SEDIMENT CONTROL MEASURES FOR THIS CONTRACT WILL BE IMPLEMENTED IN ACCORDANCE WITH SECTION 508 OF THE HOWARD COUNTY DESIGN MANUAL - VOLUME IV: STANDARD SPECIFICATIONS AND DETAILS FOR CONSTRUCTION AND AS SHOWN ON THE ROAD CONSTRUCTION PLANS, F-12-026.

Paul W. Koebel, FOR:  
PRESTON SCHEFFENACKER 05-11-12  
SIGNATURE OF DEVELOPER DATE

THIS DEVELOPMENT IS APPROVED FOR EROSION AND SEDIMENT CONTROL BY HOWARD SOIL CONSERVATION DISTRICT.

APPROVED:  
John R. Roberts 6/12/12  
HOWARD SOIL CONSERVATION DISTRICT DATE

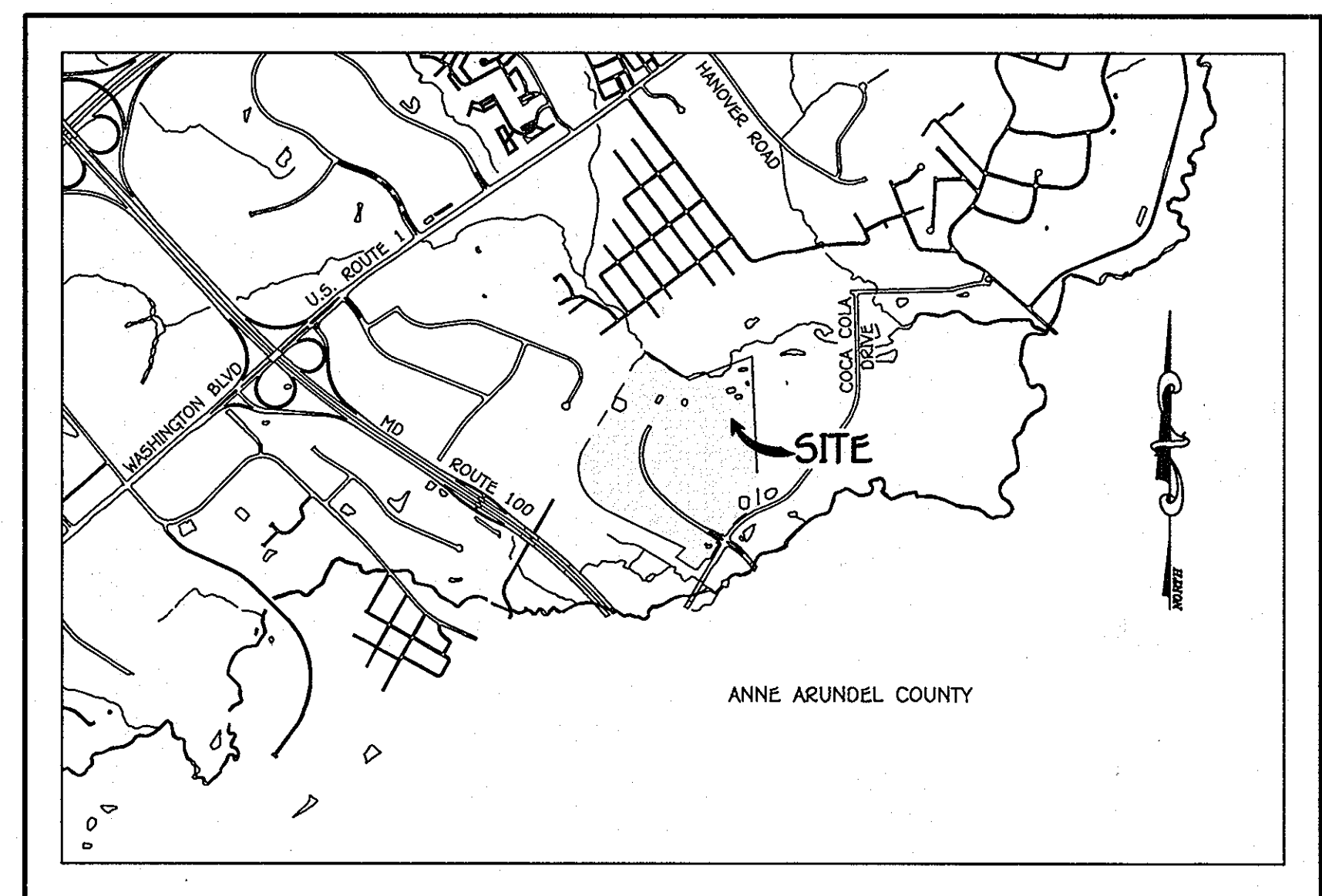


TYPE OF BUILDING: COMMERCIAL & RESIDENTIAL	
NUMBER OF PARCELS:	11
NO. OF WATER HOUSE CONNECTIONS:	0
NO. OF SEWER HOUSE CONNECTIONS:	0
SEWER SHED:	PATAPSCO
TREATMENT PLANT:	PATAPSCO WASTEWATER TREATMENT PLANT CITY OF BALTIMORE

**LOCATION MAP**  
SCALE: 1" = 600'

PLAN REFERENCE NUMBERS:  
F-12-026

CONTRACT NO. 14-4726-D  
**OXFORD SQUARE**  
PARCELS 'C' THRU 'L' &  
OPEN SPACE LOTS 1 AND 2  
WATER & SEWER MAIN EXTENSIONS  
HOWARD COUNTY, MARYLAND



**VICINITY MAP**  
SCALE: 1" = 2000'

**GENERAL NOTES**

- PART A
- APPROXIMATE LOCATIONS OF EXISTING MAINS ARE SHOWN. THE CONTRACTOR SHALL TAKE ALL NECESSARY PRECAUTIONS TO PROTECT EXISTING MAINS AND SERVICES AND MAINTAIN UNINTERRUPTED SERVICE. ANY DAMAGE INCURRED SHALL BE REPAIRED IMMEDIATELY TO THE SATISFACTION OF THE ENGINEER AT THE CONTRACTOR'S EXPENSE.
  - TOPOGRAPHIC FIELD SURVEYS WERE PERFORMED ON OR ABOUT MAY, 2010 BY FISHER, COLLINS & CARTER, INC.
  - HORIZONTAL AND VERTICAL SURVEY CONTROLS: THE COORDINATES SHOWN ON THE DRAWINGS ARE BASED ON MARYLAND STATE REFERENCE SYSTEM NAD '83/91' AS PROJECTED BY HOWARD COUNTY GEODETIC CONTROL STATIONS NO. 38GA & NO. 43CB. ALL VERTICAL CONTROLS ARE BASED ON NAVD '86. VERTICAL CONTROLS PROVIDED ON THE DRAWINGS.
  - ALL PIPE ELEVATIONS SHOWN ARE INVERT ELEVATIONS UNLESS OTHERWISE NOTED ON THE PLANS.
  - CLEAR ALL UTILITIES BY A MINIMUM OF 12 INCHES. CLEAR ALL POLES BY 5'-0" MINIMUM OR TUNNEL AS REQUIRED UNLESS OTHERWISE NOTED. THE OWNER HAS CONTACTED THE UTILITY COMPANIES AND HAS MADE ARRANGEMENTS FOR BRACING OF POLES AS SHOWN ON THE DRAWINGS. IN THE EVENT THE CONTRACTOR'S WORK REQUIRES BRACING OF ADDITIONAL POLES, ANY COST INCURRED BY THE OWNER FOR THE BRACING OF THE ADDITIONAL POLES OR DAMAGES SHALL BE DEDUCTED FROM MONIES OWED THE CONTRACTOR. THE CONTRACTOR SHALL COORDINATE WITH THE UTILITY COMPANIES TO SCHEDULE THE BRACING OF THE POLES.
  - FOR DETAILS NOT SHOWN ON THE DRAWINGS, AND FOR MATERIALS AND CONSTRUCTION METHODS, USE HOWARD COUNTY DESIGN MANUAL, VOLUME IV, STANDARD SPECIFICATIONS AND DETAILS FOR CONSTRUCTION (LATEST EDITION). THE CONTRACTOR SHALL HAVE A COPY OF VOLUME IV ON THE JOB SITE.
  - WHERE TEST PITS HAVE BEEN MADE ON EXISTING UTILITIES, THEY ARE NOTED BY THE SYMBOL AT THE LOCATIONS OF THE TEST PITS. A NOTE OR NOTES CONTAINING THE RESULTS OF THE TEST PIT OR PITS IS INCLUDED ON THE DRAWINGS. EXISTING UTILITIES IN THE VICINITY OF THE PROPOSED WORK, FOR WHICH TEST PITS HAVE NOT BEEN DUG SHALL BE LOCATED BY THE CONTRACTOR TWO WEEKS BEFORE CONSTRUCTION OPERATIONS AT HIS OWN EXPENSE.
  - THE CONTRACTOR SHALL NOTIFY THE FOLLOWING UTILITY COMPANIES OR AGENCIES AT LEAST FIVE WORKING DAYS BEFORE STARTING WORK SHOWN ON THESE PLANS:
 

AT&T	1-800-252-1133
BGE (CONTRACTOR SERVICES)	410-637-8713
BGE (EMERGENCY)	410-685-0123
BUREAU OF UTILITIES	410-313-4900
COLONIAL PIPELINE CO.	410-795-1590
MISS UTILITY	1-800-257-7777
STATE HIGHWAY ADMINISTRATION	410-531-9533
VERIZON	1-800-743-0033 / 410-224-9210
  - TREES AND SHRUBS ARE TO BE PROTECTED FROM DAMAGE TO THE MAXIMUM EXTENT. TREES AND SHRUBS LOCATED WITHIN THE CONSTRUCTION STRIP ARE NOT TO BE REMOVED OR DAMAGED BY THE CONTRACTOR.
  - CONTRACTOR SHALL REMOVE TREES, STUMPS AND ROOTS ALONG THE LINE OF EXCAVATION. PAYMENT FOR SUCH REMOVAL SHALL BE INCLUDED IN THE UNIT PRICE BID FOR THE CONSTRUCTION OF THE MAIN.
  - THE CONTRACTOR SHALL NOTIFY THE BUREAU OF HIGHWAYS, HOWARD COUNTY, AT (410)-313-7450 AT LEAST FIVE WORKING DAYS BEFORE OPEN CUTTING OR BORING/JACKING OF ANY COUNTY ROAD FOR LAYING WATER/SEWER MAINS OR HOUSE CONNECTIONS. THE APPROVAL OF THESE DRAWINGS WILL CONSTITUTE COMPLIANCE WITH DPW REQUIREMENTS PER SECTION 18.114(a) OF THE HOWARD COUNTY CODE.

PART B: WATER MAIN GENERAL NOTES

- ALL WATER MAINS SHALL BE AWWA C900 PVC PIPE, DR-18.
- TOPS OF ALL WATER MAINS SHALL HAVE A MINIMUM OF 3'-6" OF COVER UNLESS OTHERWISE NOTED.
- VALVES ADJACENT TO TEES SHALL BE STRAPPED TO TEES.
- ALL FITTINGS SHALL BE BUTTRESSED OR ANCHORED WITH CONCRETE IN ACCORDANCE WITH STANDARD DETAILS UNLESS OTHERWISE PROVIDED FOR ON THE DRAWINGS.
- FIRE HYDRANTS SHALL BE SET TO THE BURY LINE ELEVATIONS SHOWN ON THE DRAWINGS. ALL FIRE HYDRANTS SHALL BE INSTALLED IN ACCORDANCE WITH STANDARD DETAILS. THE SOIL AROUND THE FIRE HYDRANT SHALL BE COMPACTED IN ACCORDANCE WITH SECTION 1000 AND SECTION 1005 OF THE STANDARD SPECIFICATIONS.
- THE CONTRACTOR SHALL NOT OPERATE ANY WATER MAIN VALVES ON THE EXISTING WATER SYSTEM.
- TRACER WIRE AND CONTINUITY TEST STATIONS SHALL BE INSTALLED ON ALL D.I.P. AND PVC WATER MAINS IN ACCORDANCE WITH HOWARD COUNTY DESIGN MANUAL.
- FOR PVC WATER MAINS, ALL RECORDS FOR THE QUALITY CONTROL AND QUALIFICATION TEST REQUIREMENTS NOTED IN SECTION 5.1 OF THE AWWA STANDARD C900 FOR PVC PRESSURE PIPE SHALL BE SUBMITTED WITH THE PIPE MATERIAL CERTIFICATIONS OR SHOP DRAWINGS PRIOR TO APPROVAL OF THE MATERIAL FOR USE. THE TEST RECORDS SHALL BE FOR THE PIPE TO BE INSTALLED UNDER THIS CONTRACT. ALL PVC PIPE SHALL CONTAIN MARKINGS TO ALLOW CROSS REFERENCING OF THE PIPE SUPPLIED TO THE TEST RECORDS RECEIVED.
- UNLESS OTHERWISE NOTED ON THE PLANS OR IN THE SPECIFICATIONS, SEVENTEEN (17) POUND SACRIFICIAL ANODES SHALL BE INSTALLED ON ALL VALVES AND METALLIC FITTINGS USED WITH PVC WATER MAINS IN ACCORDANCE WITH VOLUME IV, STANDARD SPECIFICATIONS AND DETAILS FOR CONSTRUCTION. MAGNESIUM ANODES SHALL BE INSTALLED ON ALL VALVES AND DUCTILE IRON FITTINGS INCLUDING RESTRAINTS AND HANGERS. ZINC ANODES SHALL BE INSTALLED ON ALL STAINLESS STEEL FITTINGS AND SADDLES USED WITH PVC MAINS. ALL "TEES" USED WITH PVC MAINS SHALL BE DUCTILE IRON.

PART C: SEWER MAIN GENERAL NOTES

- ALL SEWER MAINS SHALL BE D.I.P. OR P.V.C. UNLESS OTHERWISE NOTED.
- ALL MANHOLES SHALL BE 41"-0" INSIDE DIAMETER UNLESS OTHERWISE NOTED.
- FORCE MAINS SHALL BE D.I.P. ONLY.
- MANHOLES SHOWN WITH 12" AND 16" WALLS ARE FOR BRICK MANHOLES ONLY.
- MANHOLES DESIGNATED W.T. IN PLAN AND PROFILE SHALL HAVE WATERTIGHT FRAME AND COVER, STANDARD DETAIL G5.52. WHERE WATERTIGHT MANHOLE FRAMES AND COVERS ARE USED, SET TOP OF FRAME 1'-6" ABOVE FINISHED GRADE UNLESS OTHERWISE NOTED ON THE DRAWINGS.
- HOUSE(S) WITH THE SYMBOL "C.N.S." INDICATES THAT CELLAR CANNOT BE SERVED.

**OWNER**

KELLOGG-COP, LLC  
c/o DAVID P. SCHEFFENACKER, JR.  
HAWKING MEMBERS  
2330 WEST JOPPA ROAD, SUITE 190  
LUTHERVILLE, MARYLAND 21093-4614  
PHONE - 410-296-3800

**DEVELOPER**

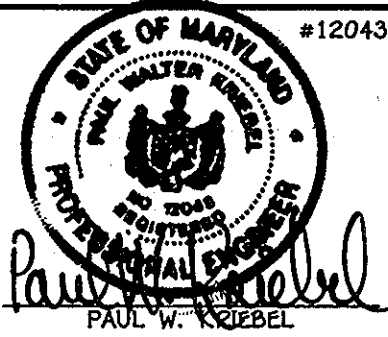
PRESTON SCHEFFENACKER PROPERTIES  
2330 WEST JOPPA ROAD, SUITE 190  
LUTHERVILLE, MARYLAND 21093-4614  
PHONE - 410-296-3800

CONTRACT NO. 14-4726-D  
OXFORD SQUARE  
PARCELS 'C' THRU 'L' &  
OPEN SPACE LOTS 1 AND 2  
WATER & SEWER MAIN EXTENSIONS  
HOWARD COUNTY, MARYLAND

DEPARTMENT OF PUBLIC WORKS  
HOWARD COUNTY, MARYLAND  
5/29/12  
DATE

DEPARTMENT OF PLANNING AND ZONING  
HOWARD COUNTY, MARYLAND  
6/5/12  
DATE

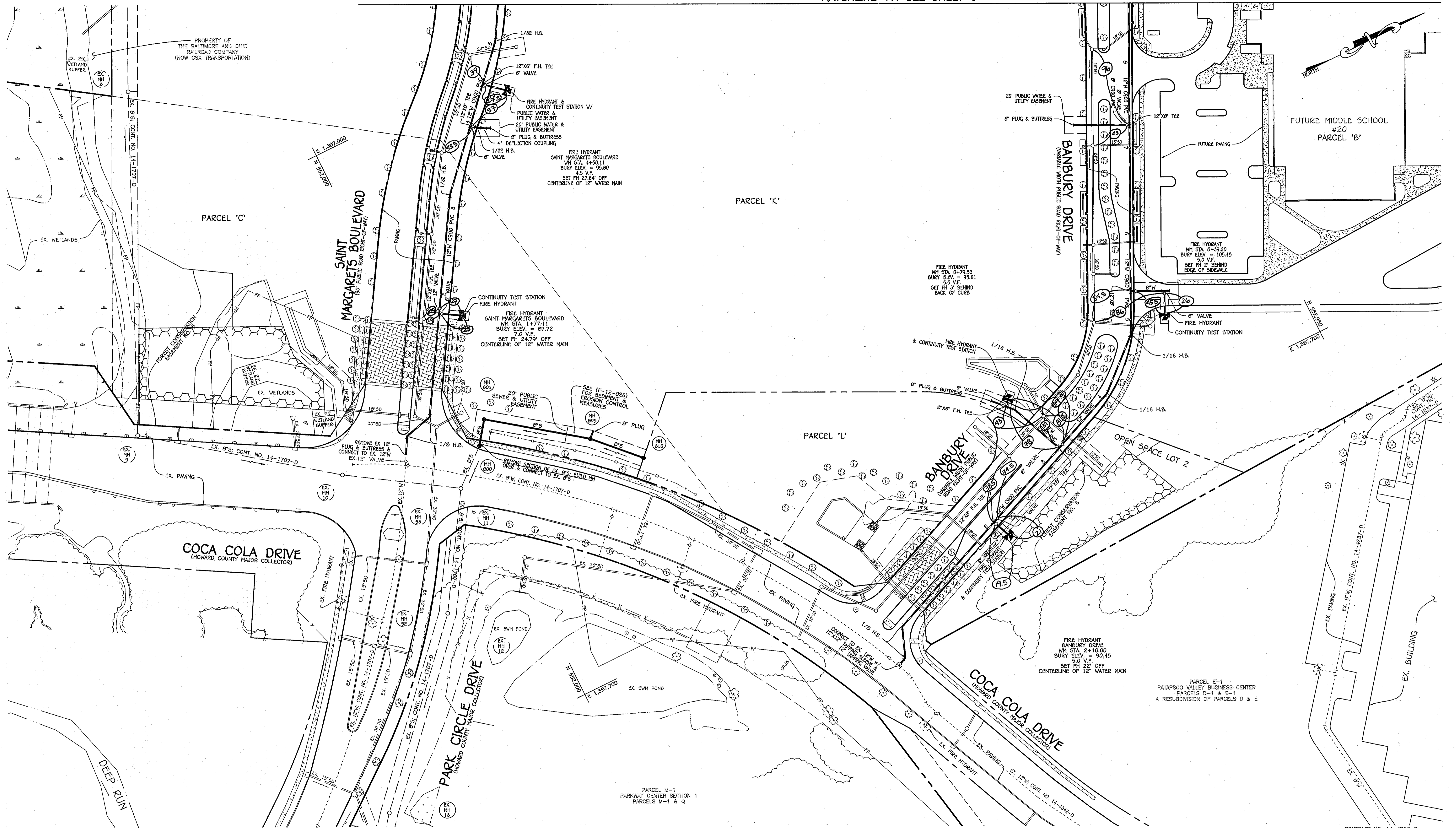
I HEREBY CERTIFY THAT THESE DOCUMENTS WERE PREPARED OR APPROVED BY ME, AND THAT I AM A DULY LICENSED PROFESSIONAL ENGINEER UNDER THE LAWS OF THE STATE OF MARYLAND.  
LICENSE NO. 12243 EXPIRATION DATE 6/7/16/14.  
FISHER, COLLINS & CARTER, INC.  
CIVIL ENGINEERS, CONSULTANTS & LAND SURVEYORS  
CENTENNIAL SQUARE OFFICE PARK - 10272 BALTIMORE NATIONAL PIKE  
ELICOTT CITY, MARYLAND 21042  
(410) 461-2895



DESIGNED BY:	B.C.R.			
DRAWN BY:	KCJ	4	AS BUILT	10/22/13
CHECKED BY:	PCC		REVISE SHEET NUMBER	7/22/13
DATE:	P.W.K.		REVISE LOCATION MAP TO UPDATE PARCEL LINES	7/22/13
BY:	PCC		REVISE QUANTITY AMOUNTS FOR SANITARY SEWER & MANHOLE	7/22/13

WATER & SEWER MAIN EXTENSIONS TITLE SHEET	
600' SCALE MAP NO. 38	BLOCK NO. 19 & 20
F.C.C. WORK ORDER NO. 09014	
FILE NAME:	WATER & SEWER MAIN EXTENSION TITLE SHEET

SCALE AS SHOWN  
SHEET 1 OF 2  
OXFORD SQUARE  
PARCELS 'C' THRU 'L' & OPEN SPACE LOTS 1 & 2  
WATER & SEWER MAIN EXTENSIONS  
CONTRACT NO. 14-4726-D  
FIRST ELECTION DISTRICT  
HOWARD COUNTY, MARYLAND



NOTE: SEE SHEET 9 FOR ABANDONMENT OF EX. 8" W & 8" S ON SITE.

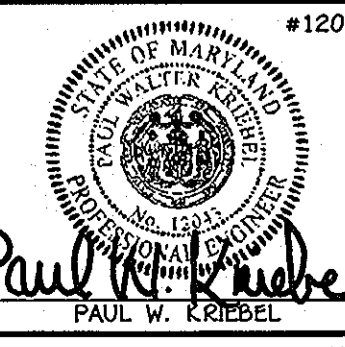
NOTE: THIS ORIGINAL CONSTRUCTION PLAN, SHEET 2 OF 8 SUPERSEDES THE WATER & SEWER MAIN CONSTRUCTION PLAN PREVIOUSLY APPROVED AND SIGNED BY THE DEPARTMENT OF PLANNING AND ZONING, ON JUNE 15, 2012.

PLAN  
SCALE: 1" = 50'

DEPARTMENT OF PUBLIC WORKS  
HOWARD COUNTY, MARYLAND  
*John C. Green*  
7/31/13  
CHIEF, BUREAU OF UTILITIES

DEPARTMENT OF PLANNING AND ZONING  
HOWARD COUNTY, MARYLAND  
*John C. Green*  
7/31/13  
CHIEF, DEVELOPMENT ENGINEERING DIVISION

I HEREBY CERTIFY THAT THESE DOCUMENTS WERE PREPARED OR APPROVED BY ME, AND THAT I AM A DULY LICENSED PROFESSIONAL ENGINEER UNDER THE LAWS OF THE STATE OF MARYLAND, LICENSE NO. 12043 EXPIRATION DATE IS 7/16/14.  
**FISHER, COLLINS & CARTER, INC.**  
CIVIL ENGINEERING CONSULTANTS & LAND SURVEYORS  
CENTRAL SQUARE OFFICE PARK - 10276 BALDORNE NATIONAL Pkwy  
ELLSWORTH CITY, MARYLAND 21042  
(410) 461-2895



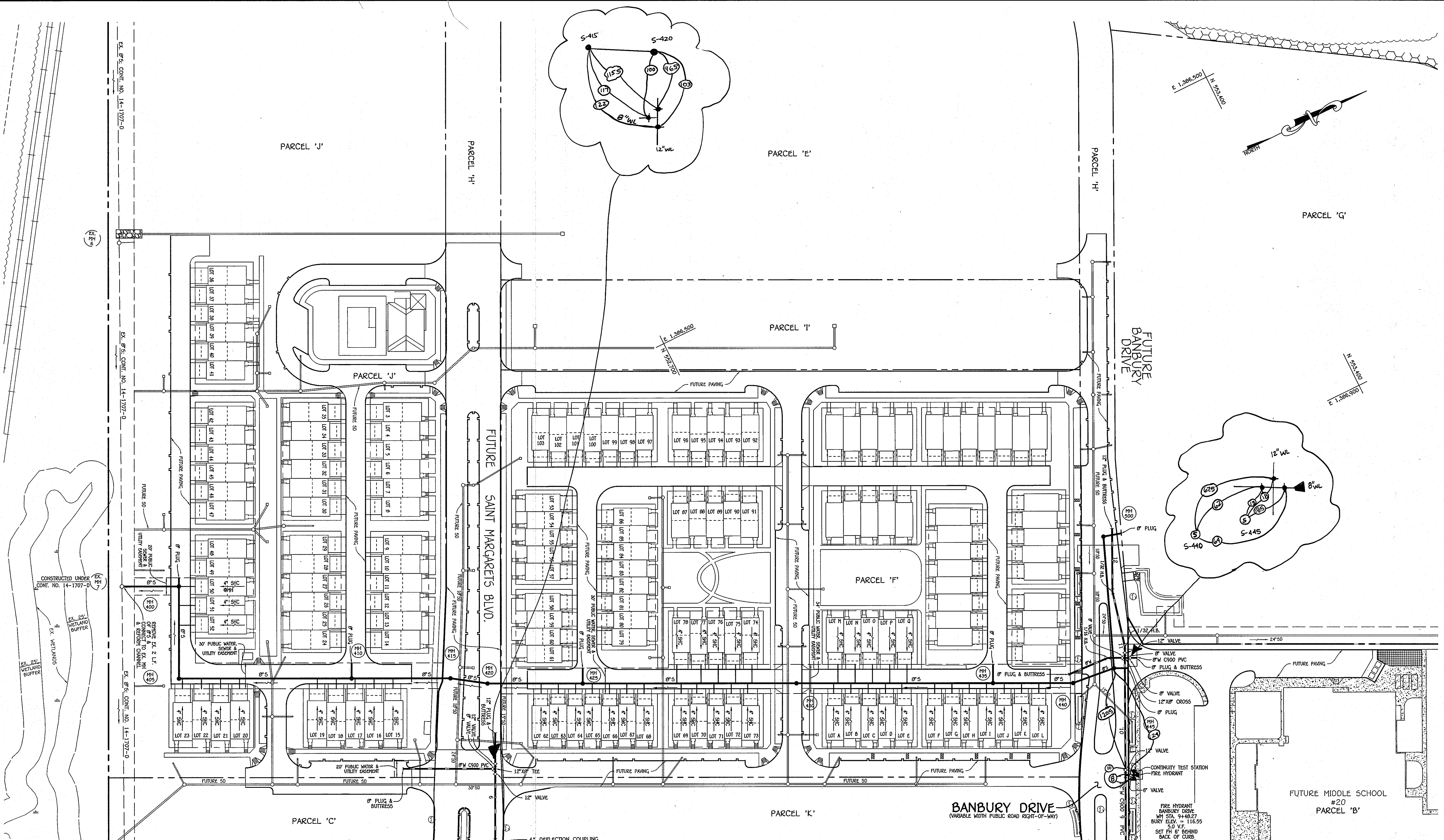
DESIGNED BY:	B.C.R.
DRAWN BY:	B.C.R.
CHECKED BY:	KCI 2 AS BUILT
P.W.K.	7/22/13
DATE:	JULY, 2013
BY NO.	REVISION

WATER & SEWER MAIN EXTENSIONS PLAN	
600' SCALE MAP NO. 38	BLOCK NO. 19 & 20
F.C.C. WORK ORDER NO. 09014	
FILE NAME: WATER & SEWER MAIN EXTENSION PLAN SHEET	

OXFORD SQUARE  
PARCELS 'C' THRU 'L' & OPEN SPACE LOTS 1 & 2  
WATER & SEWER MAIN EXTENSIONS  
CONTRACT NO. 14-4726-D  
FIRST ELECTION DISTRICT  
HOWARD COUNTY, MARYLAND

SCALE AS SHOWN  
SHEET 2 OF 8

I:\2009\09014\Wg\Water & Sewer\Contract\3001 - Contract No. 14-4726-d (F-12-025)\09014-3001 Water & Sewer Base Plan - Phase 1 (Redline) (1.dwg, New) Plan Sheet 2, 7/17/2013, 10:09:52 AM



NOTE: SEE SHEET 9 FOR ABANDONMENT OF EX. 8" W & 8" S ON SITE.

NOTE: THIS ORIGINAL CONSTRUCTION PLAN, SHEET 3 OF 8 SUPERSEDES THE WATER & SEWER MAIN CONSTRUCTION PLAN PREVIOUSLY APPROVED AND SIGNED BY THE DEPARTMENT OF PLANNING AND ZONING, ON JUNE 15, 2012.

MATCHLINE 'A': SEE SHEET 2

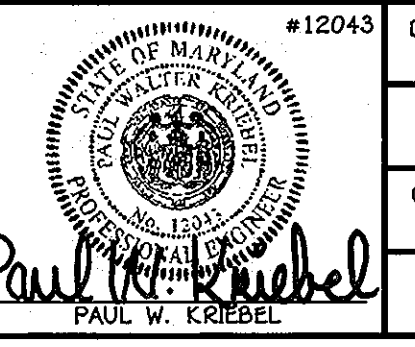
PLAN  
SCALE: 1" = 50'

CONTRACT NO. 14-4726-D  
OXFORD SQUARE  
PARCELS 'C' THRU 'L' &  
OPEN SPACE LOTS 1 AND 2  
WATER & SEWER MAIN EXTENSIONS  
HOWARD COUNTY, MARYLAND

DEPARTMENT OF PUBLIC WORKS  
HOWARD COUNTY, MARYLAND

DEPARTMENT OF PLANNING AND ZONING  
HOWARD COUNTY, MARYLAND

I HEREBY CERTIFY THAT THESE DOCUMENTS WERE PREPARED OR APPROVED BY ME, AND THAT I AM A DULY LICENSED PROFESSIONAL ENGINEER UNDER THE LAWS OF THE STATE OF MARYLAND, LICENSE NO. 12043 EXPIRATION DATE IS 7/16/14.



**FISHER, COLLINS & CARTER, INC.**  
CIVIL ENGINEERING CONSULTANTS & LAND SURVEYORS  
CENTRAL SQUARE OFFICE PARK - 10272 BALTIMORE NATIONAL PIKE  
ELLSWORTH CITY, MARYLAND 21116  
(410) 461-2222

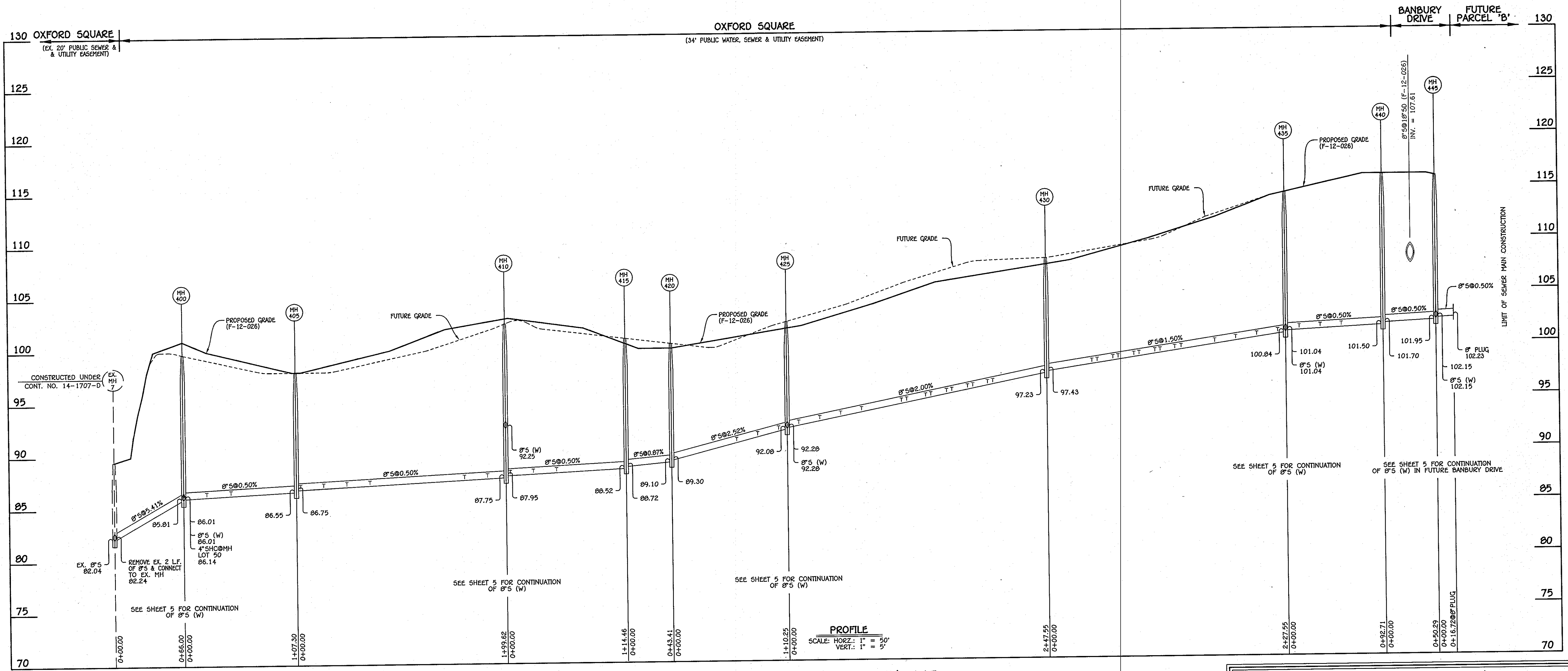
DESIGNED BY:	B.C.R.	DATE:	JULY, 2013
DRAWN BY:	B.C.R.	DATE:	7/22/13
CHECKED BY:	KCI 2 AS BUILT	DATE:	7/22/13
BY NO.	REVISION	DATE:	

WATER & SEWER MAIN EXTENSIONS PLAN	
600' SCALE MAP NO. 38	BLOCK NO. 19 & 20
F.C.C. WORK ORDER NO. 09014	
FILE NAME:	WATER & SEWER MAIN EXTENSION PLAN SHEET

**OXFORD SQUARE**  
PARCELS 'C' THRU 'L' & OPEN SPACE LOTS 1 & 2  
WATER & SEWER MAIN EXTENSIONS  
CONTRACT NO. 14-4726-D  
FIRST ELECTION DISTRICT  
HOWARD COUNTY, MARYLAND

SCALE AS SHOWN  
SHEET 3 OF 8

I:\2009\09014\Map\Water & Sewer\Contract\3001 - Contract No. 14-4726-d (F-12-026)\09014-3001 Water & Sewer Base Plan - Phase 1 (Redline) 1.dwg (New) Plan Sheet 3, 7/17/2013 10:21:19 AM



8" SEWER MAIN: EX. MH 7 - MH 445

MANHOLE TABULATION CHART			
NO.	NORTHING	EASTING	RIM ELEVATION
400	552071.51	1386504.63	99.75
405	552024.03	1386600.86	98.00
410	552203.05	1386689.19	102.48
415	552305.89	1386739.84	100.98
420	552341.54	1386764.32	100.45
425	552440.41	1386813.10	102.39
430	552662.41	1386922.64	108.16
435	552866.47	1387023.33	114.32
440	552949.61	1387064.35	116.00
445	552999.62	1387069.67	115.82
8" PLUG	553014.61	1387077.07	---

NOTE: SET MH RIMS FLUSH W/FUTURE GRADE; AS SHOWN

NOTE: THIS ORIGINAL CONSTRUCTION PLAN, SHEET 4 OF 8 SUPERSEDES THE WATER & SEWER MAIN CONSTRUCTION PLAN PREVIOUSLY APPROVED AND SIGNED BY THE DEPARTMENT OF PLANNING AND ZONING, ON JUNE 15, 2012.

SEWER HOUSE CONNECTION CHART					
STATION	LOT	ELEVATION AT MAIN	ELEVATION AT R/W	M.C.E.	SLAB
EX. MH 7 TO MH 400					
0+22 LT.	51	86.29	86.67	90.57	101.94
0+45 LT.	52	86.41	86.79	90.69	101.27
MH 400 TO MH 405					
0+04 RT.	23	86.94	87.18	90.98	98.75
0+26 RT.	22	87.05	87.29	91.09	99.42
0+48 RT.	21	87.16	87.40	91.20	100.08
0+70 RT.	20	87.27	87.51	91.30	100.08
1+60 RT.	19	87.72	87.96	91.76	103.36
1+82 RT.	18	87.83	88.07	91.87	104.03
MH 405 TO MH 410					
0+04 RT.	17	88.14	88.38	92.18	104.03
0+26 RT.	16	88.25	88.49	92.29	104.03
0+48 RT.	15	88.36	88.60	92.40	103.36

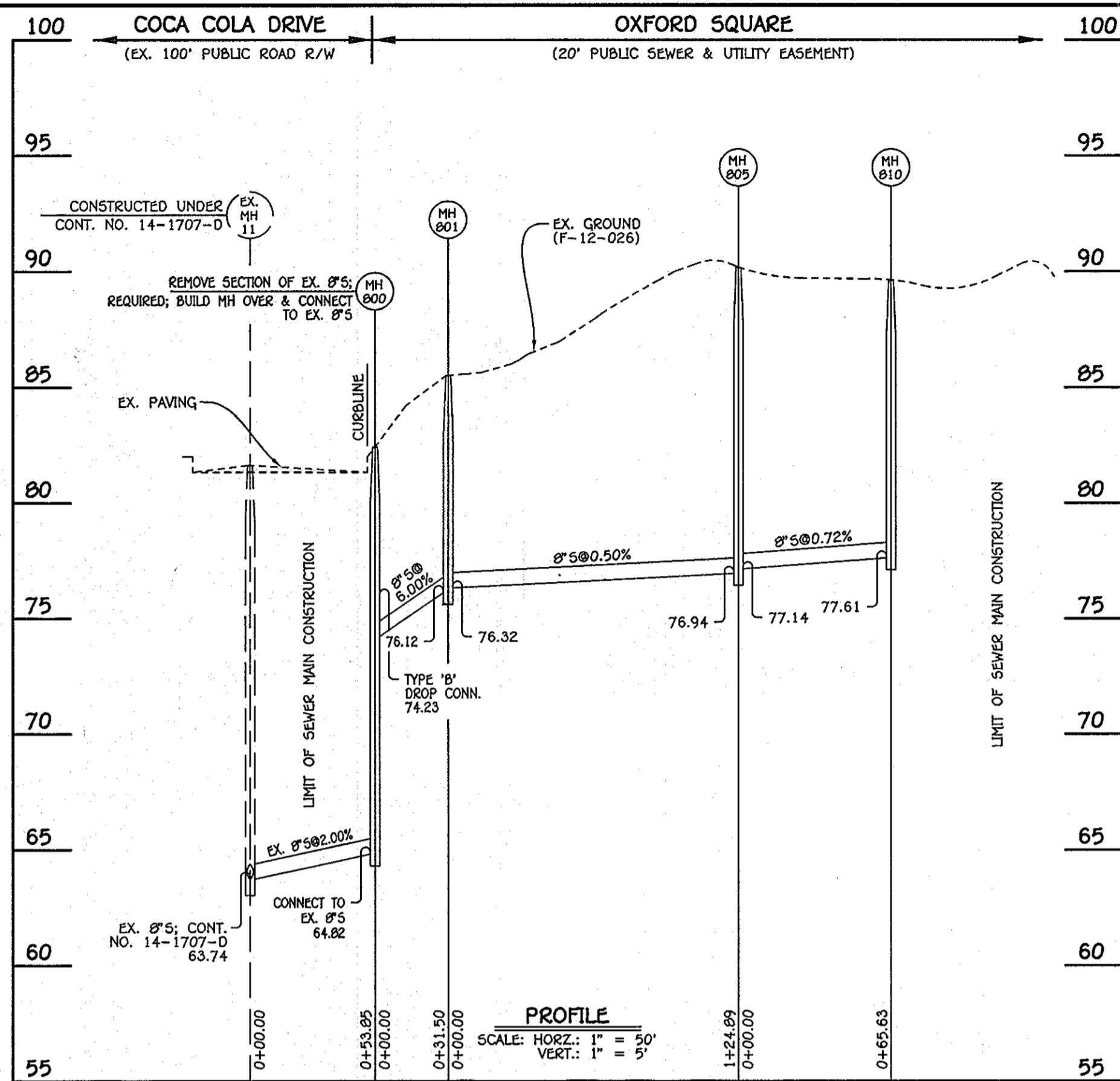
SEWER HOUSE CONNECTION CHART					
STATION	LOT	ELEVATION AT MAIN	ELEVATION AT R/W	M.C.E.	SLAB
MH 420 TO MH 425					
0+62 RT.	62	91.03	91.27	95.07	102.81
0+82 RT.	63	91.54	91.78	95.58	103.48
1+02 RT.	64	92.04	92.28	96.08	103.48
MH 425 TO MH 430					
0+11 RT.	65	92.67	92.91	96.71	104.15
0+31 RT.	66	93.07	93.31	97.11	104.81
0+51 RT.	67	93.47	93.71	97.51	105.48
0+71 RT.	68	93.87	94.11	97.91	106.15
1+09 LT.	78	94.63	95.07	98.97	108.33
1+14 RT.	69	94.73	94.97	98.77	107.33
1+32 RT.	70	95.09	95.33	99.13	108.00
1+57 LT.	77	95.19	95.63	99.53	109.00
1+57 RT.	76	95.49	95.73	99.53	108.67
1+57 LT.	71	95.59	96.03	99.93	109.66
1+72 RT.	72	95.89	96.13	99.93	109.33
1+77 LT.	75	95.99	96.43	100.33	110.33
1+91 RT.	73	96.27	96.51	100.31	110.00
1+96 LT.	74	96.37	96.81	100.71	111.00

SEWER HOUSE CONNECTION CHART					
STATION	LOT	ELEVATION AT MAIN	ELEVATION AT R/W	M.C.E.	SLAB
MH 430 TO MH 435					
0+43 RT.	A	98.25	98.49	102.29	
0+48 LT.	M	98.32	98.76	102.66	
0+63 RT.	B	98.55	98.79	102.59	
0+68 LT.	N	98.62	99.06	102.96	
0+83 RT.	C	98.85	99.09	102.89	
0+88 LT.	O	98.92	99.36	103.26	
1+03 RT.	D	99.15	99.39	103.19	
1+08 LT.	P	99.22	99.66	103.56	
1+22 RT.	E	99.43	99.67	103.47	
1+28 LT.	Q	99.52	99.96	103.86	
1+60 RT.	F	100.00	100.24	104.04	
1+80 RT.	G	100.30	100.54	104.34	
2+00 RT.	H	100.60	100.84	104.64	
2+20 RT.	I	100.90	101.14	104.94	
MH 435 TO MH 440					
0+13 RT.	J	101.28	101.52	105.32	
0+33 RT.	K	101.38	101.62	105.42	
0+53 RT.	L	101.48	101.72	105.52	

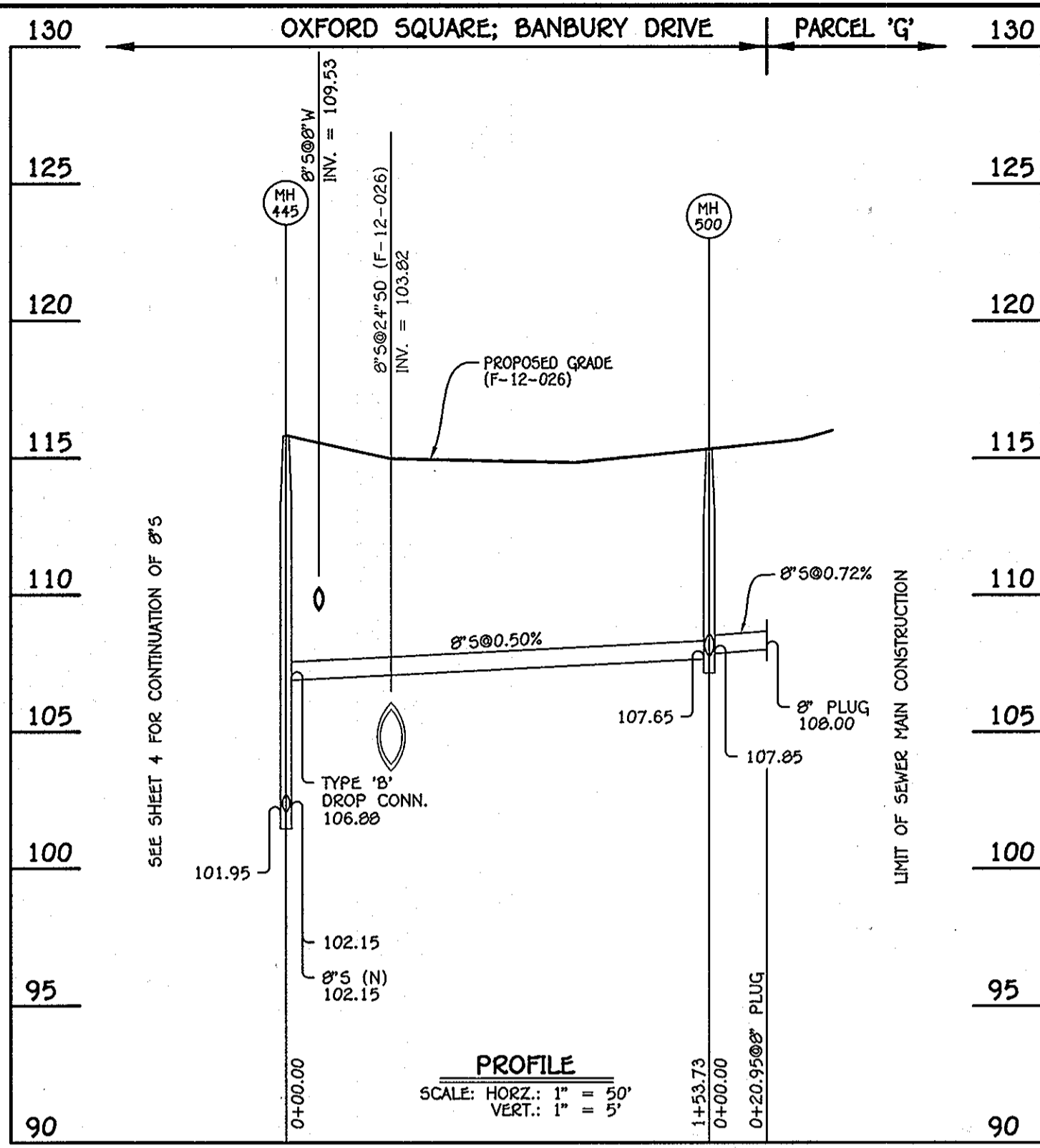
\* MINIMUM SEWER SERVICE ELEVATION: NO GRAVITY SERVICE AVAILABLE

CONTRACT NO. 14-4726-D  
OXFORD SQUARE  
PARCELS 'C' THRU 'L' &  
OPEN SPACE LOTS 1 AND 2  
WATER & SEWER MAIN EXTENSIONS  
HOWARD COUNTY, MARYLAND

DEPARTMENT OF PUBLIC WORKS HOWARD COUNTY, MARYLAND Chief, Bureau of Utilities: <i>Steve C. ...</i> 7/21/13	DEPARTMENT OF PLANNING AND ZONING HOWARD COUNTY, MARYLAND Chief, Development Engineering Division: <i>...</i> 8/1/13	I HEREBY CERTIFY THAT THESE DOCUMENTS WERE PREPARED OR APPROVED BY ME, AND THAT I AM A DULY LICENSED PROFESSIONAL ENGINEER UNDER THE LAWS OF THE STATE OF MARYLAND. LICENSE NO. 12043 EXPIRATION DATE IS 7/16/14. <b>FISHER, COLLINS &amp; CARTER, INC.</b> CIVIL ENGINEERING CONSULTANTS & LAND SURVEYORS CENTRAL SQUARE OFFICE PARK - 10672 BALDWIN NATIONAL PIKE ELIJAH CITY, MARYLAND 21042 (410) 461-2099	#12043 DESIGNED BY: B.C.R. DRAWN BY: B.C.R. CHECKED BY: P.W.K. DATE: JULY, 2013 BY NO. REVISION	<b>SEWER MAIN PROFILE &amp; CHARTS</b> 600' SCALE MAP NO. 38 BLOCK NO. 19 & 20 F.C.C. WORK ORDER NO. 09014 FILE NAME: WATER & SEWER MAIN EXTENSION PROFILE SHEET	<b>OXFORD SQUARE</b> PARCELS 'C' THRU 'L' & OPEN SPACE LOTS 1 & 2 WATER & SEWER MAIN EXTENSIONS CONTRACT NO. 14-4726-D FIRST ELECTION DISTRICT HOWARD COUNTY, MARYLAND SCALE AS SHOWN SHEET 4 OF 8
--	--	---	--	---	---



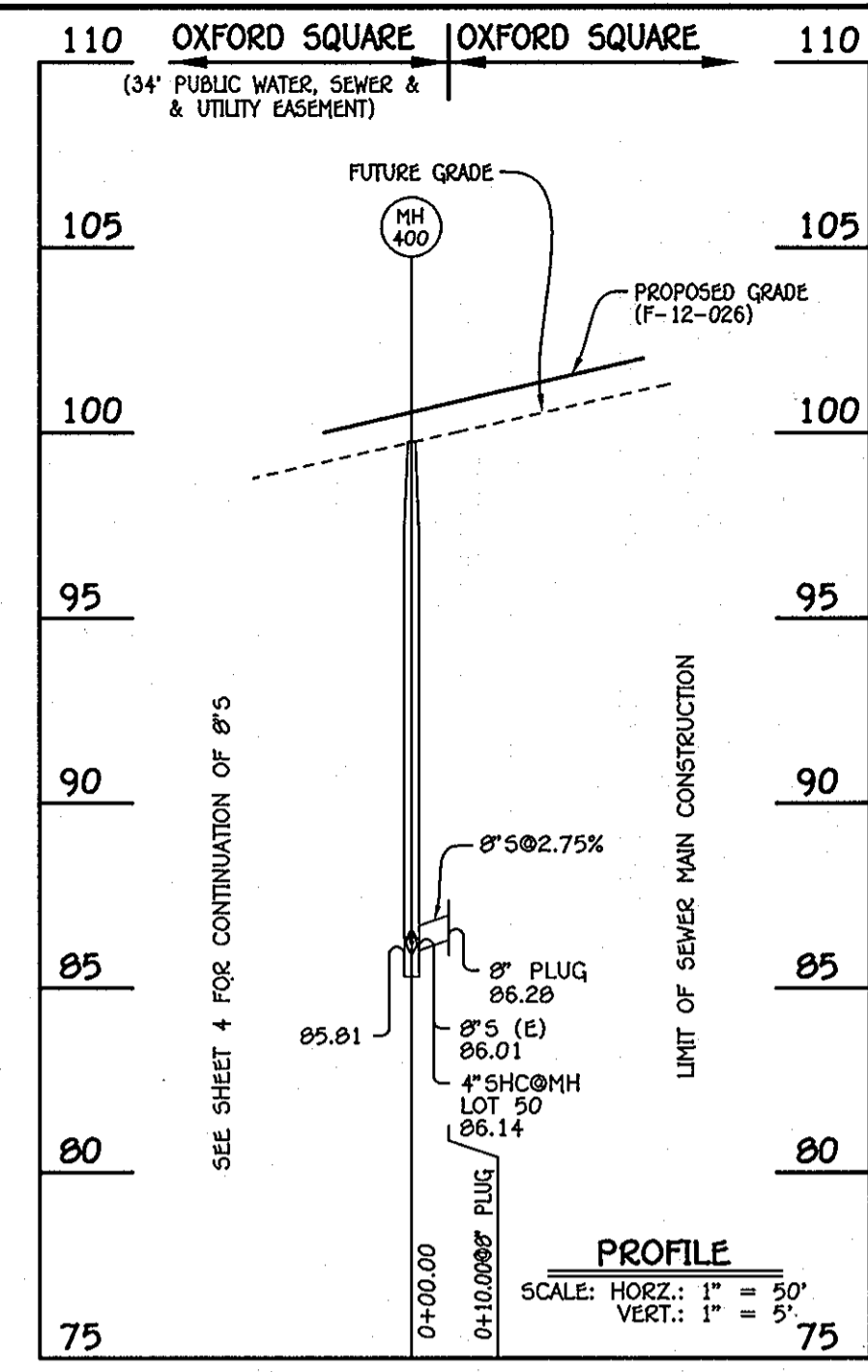
8" SEWER MAIN; PARCELS 'K' & 'L': EX. MH 11 - MH 810



8" SEWER MAIN; BANBURY DRIVE: MH 445 - MH 500

NO.	NORTHING	EASTING	RIM ELEVATION
445	552999.62	1387069.67	115.02
500	553056.67	1386926.92	115.33
8" PLUG	553076.01	1386932.67	---

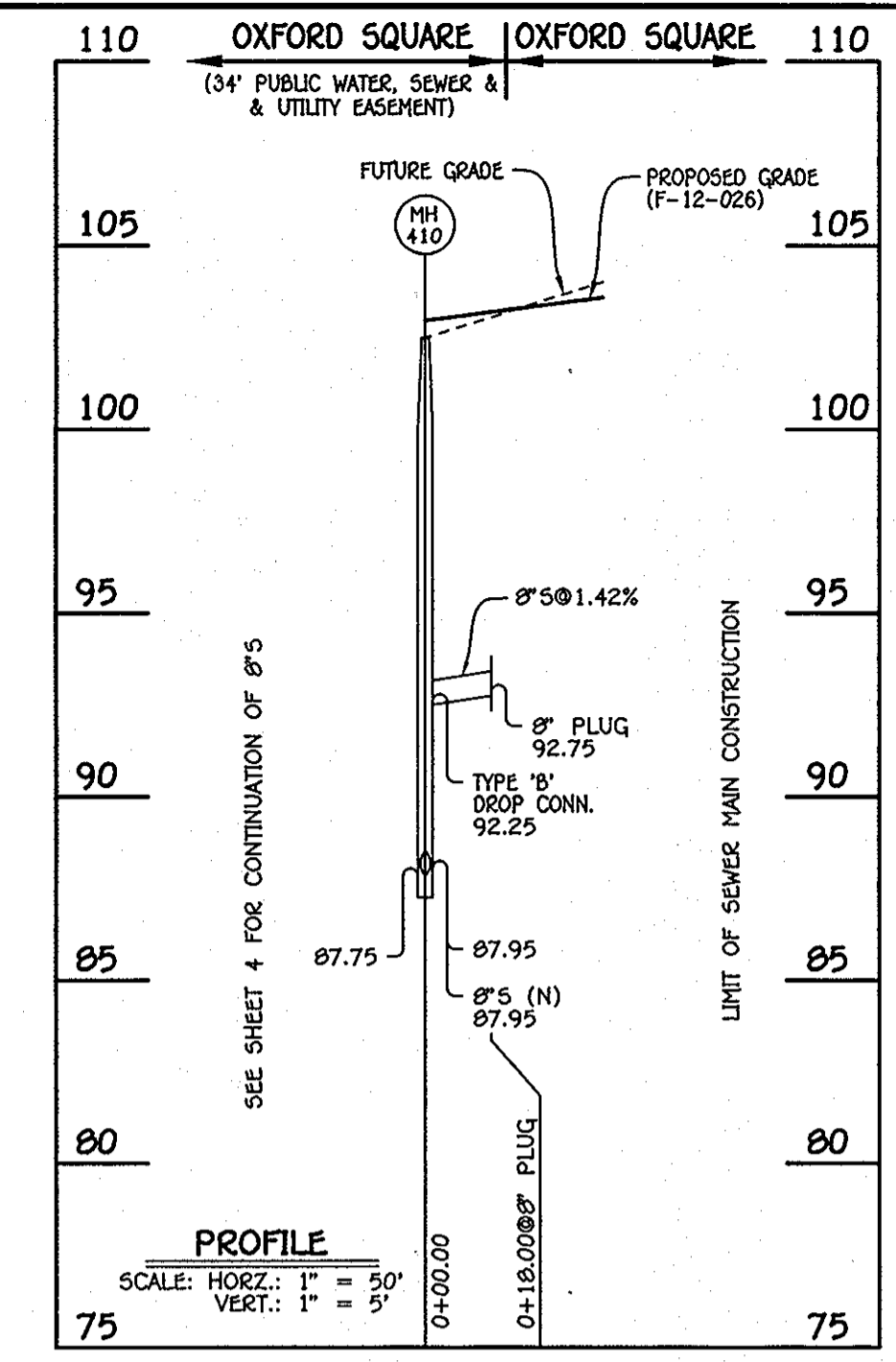
NOTE: SET MH RIMS FLUSH W/PROPOSED GRADE.



8" SEWER MAIN: MH 400 - 8" PLUG (W)

NO.	NORTHING	EASTING	RIM ELEVATION
400	552071.51	1386504.63	99.75
8" PLUG	552075.94	1386495.67	---

NOTE: SET MH RIMS FLUSH W/PROPOSED GRADE.



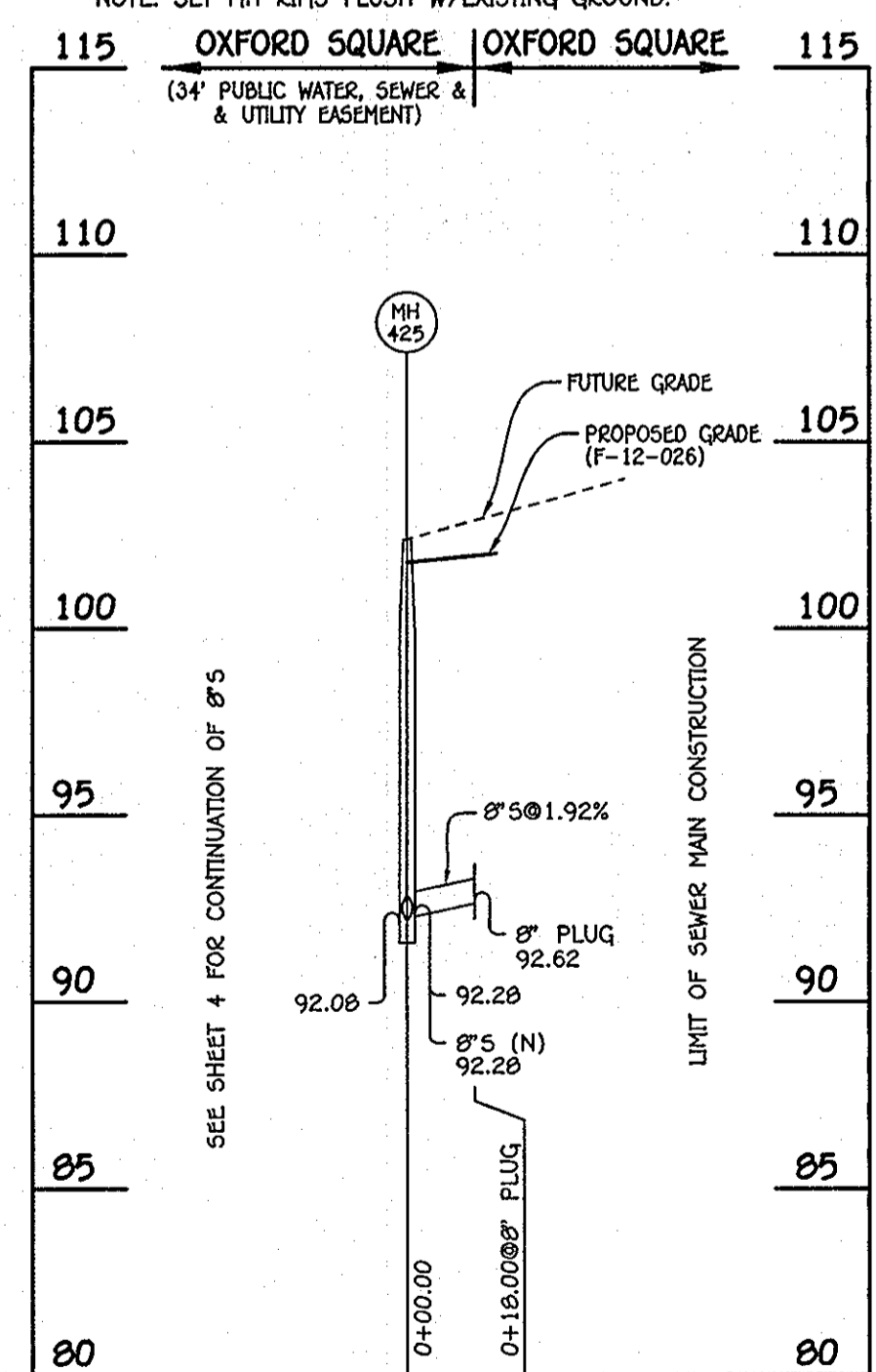
8" SEWER MAIN: MH 410 - 8" PLUG (W)

NO.	NORTHING	EASTING	RIM ELEVATION
410	552203.05	1386609.19	102.48
8" PLUG	552211.01	1386673.05	---

NOTE: SET MH RIMS FLUSH W/PROPOSED GRADE.

NO.	NORTHING	EASTING	RIM ELEVATION
800	552018.91	1387386.66	82.43
801	552037.77	1387361.43	85.50
805	552137.81	1387436.21	90.15
810	552183.11	1387483.70	89.62

NOTE: SET MH RIMS FLUSH W/EXISTING GROUND.



8" SEWER MAIN: MH 425 - 8" PLUG (W)

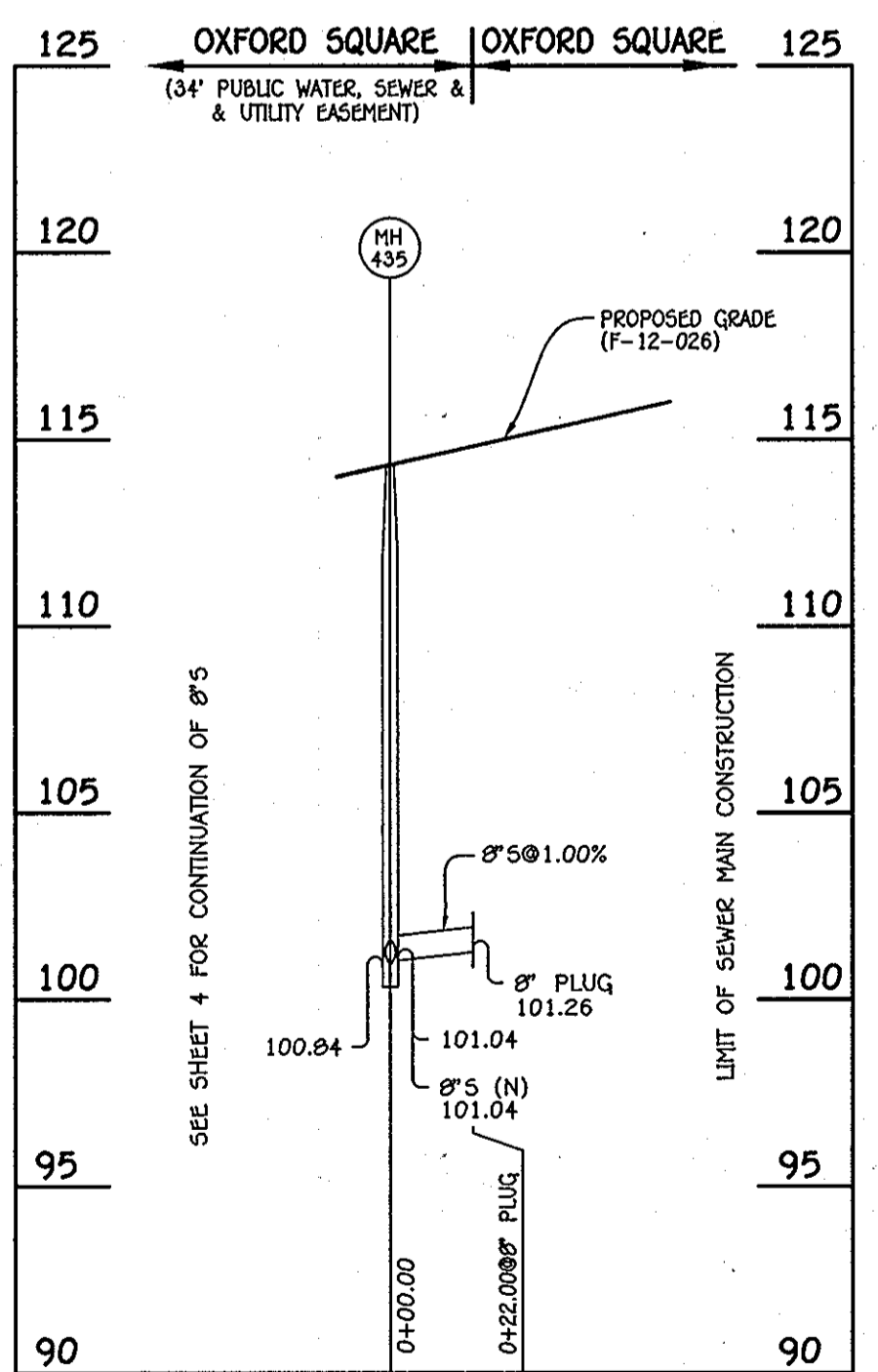
NO.	NORTHING	EASTING	RIM ELEVATION
425	552440.41	1386813.10	102.39
8" PLUG	552448.37	1386796.96	---

NOTE: SET MH RIMS FLUSH W/PROPOSED GRADE.

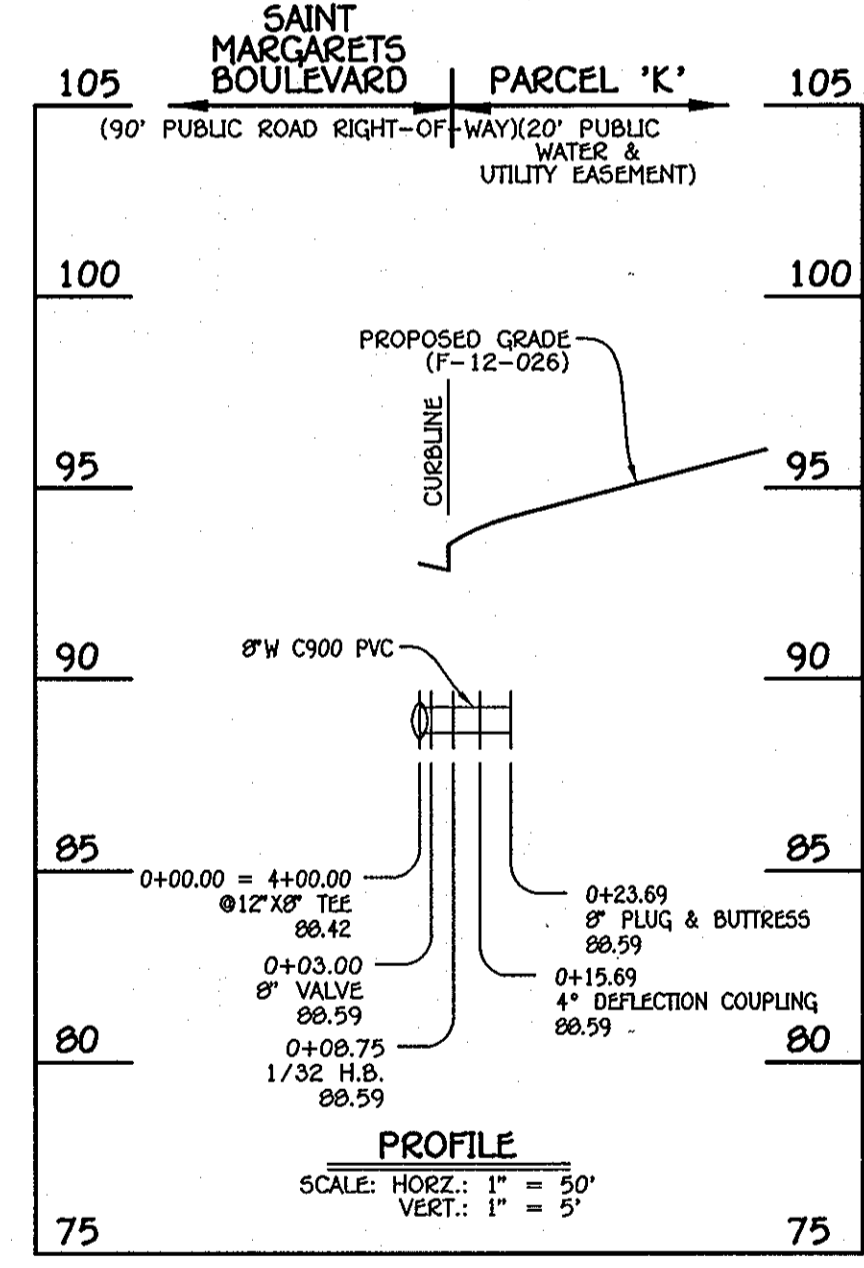
NO.	NORTHING	EASTING	RIM ELEVATION
435	552866.47	1387023.33	114.32
8" PLUG	552876.21	1387003.60	---

NOTE: SET MH RIMS FLUSH W/PROPOSED GRADE.

NOTE: THIS ORIGINAL CONSTRUCTION PLAN, SHEET 5 OF 8 SUPERSEDES THE WATER & SEWER MAIN CONSTRUCTION PLAN PREVIOUSLY APPROVED AND SIGNED BY THE DEPARTMENT OF PLANNING AND ZONING, ON JUNE 15, 2012.

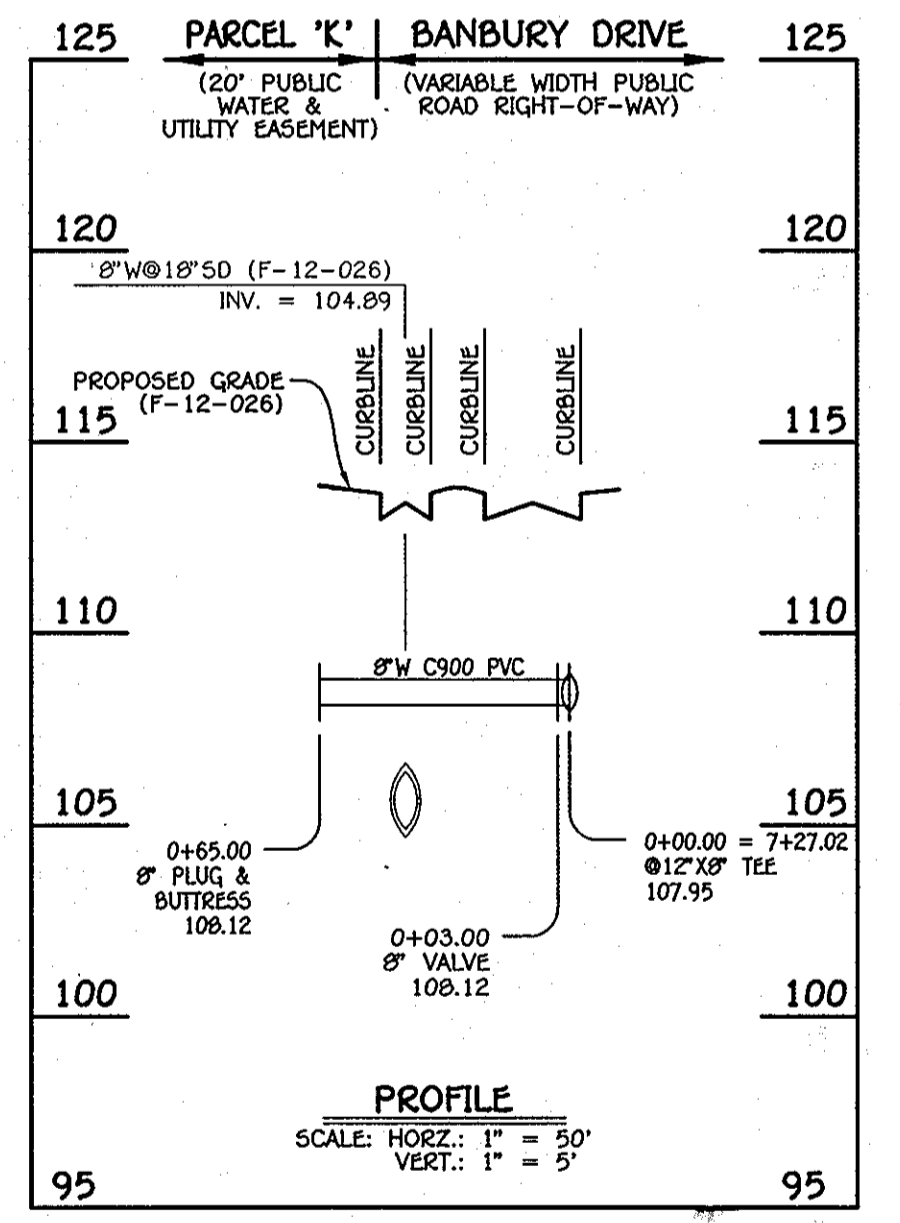


8" SEWER MAIN: MH 435 - 8" PLUG (W)



8" WATER MAIN (WEST): PARCEL 'K'

W.M. STA.	APPURTENANCE	NORTHING	EASTING
0+00.00	12" X 8" TEE	552175.38	1387047.95
0+03.00	8" VALVE	552177.59	1387049.99
0+08.75	1/32 H.B.	552181.81	1387053.89
0+15.69	4" DEFLECTION COUPLING	552187.76	1387057.46
0+23.69	8" PLUG & BUTTRESS	552194.93	1387061.00



8" WATER MAIN (EAST): PARCEL 'K'

W.M. STA.	APPURTENANCE	NORTHING	EASTING
0+00.00	12" X 8" TEE	552099.45	1387386.18
0+03.00	8" VALVE	552096.75	1387384.87
0+05.00	8" VALVE	552096.75	1387384.87
0+65.00	8" PLUG & BUTTRESS	552801.02	1387357.70

CONTRACT NO. 14-4726-D  
OXFORD SQUARE  
PARCELS 'C' THRU 'L' &  
OPEN SPACE LOTS 1 AND 2  
WATER & SEWER MAIN EXTENSIONS  
HOWARD COUNTY, MARYLAND

DEPARTMENT OF PUBLIC WORKS  
HOWARD COUNTY, MARYLAND  
S. C. G...  
7/13/13  
CHIEF, BUREAU OF UTILITIES

DEPARTMENT OF PLANNING AND ZONING  
HOWARD COUNTY, MARYLAND  
M. G. ...  
8/5/13  
CHIEF, DEVELOPMENT ENGINEERING DIVISION

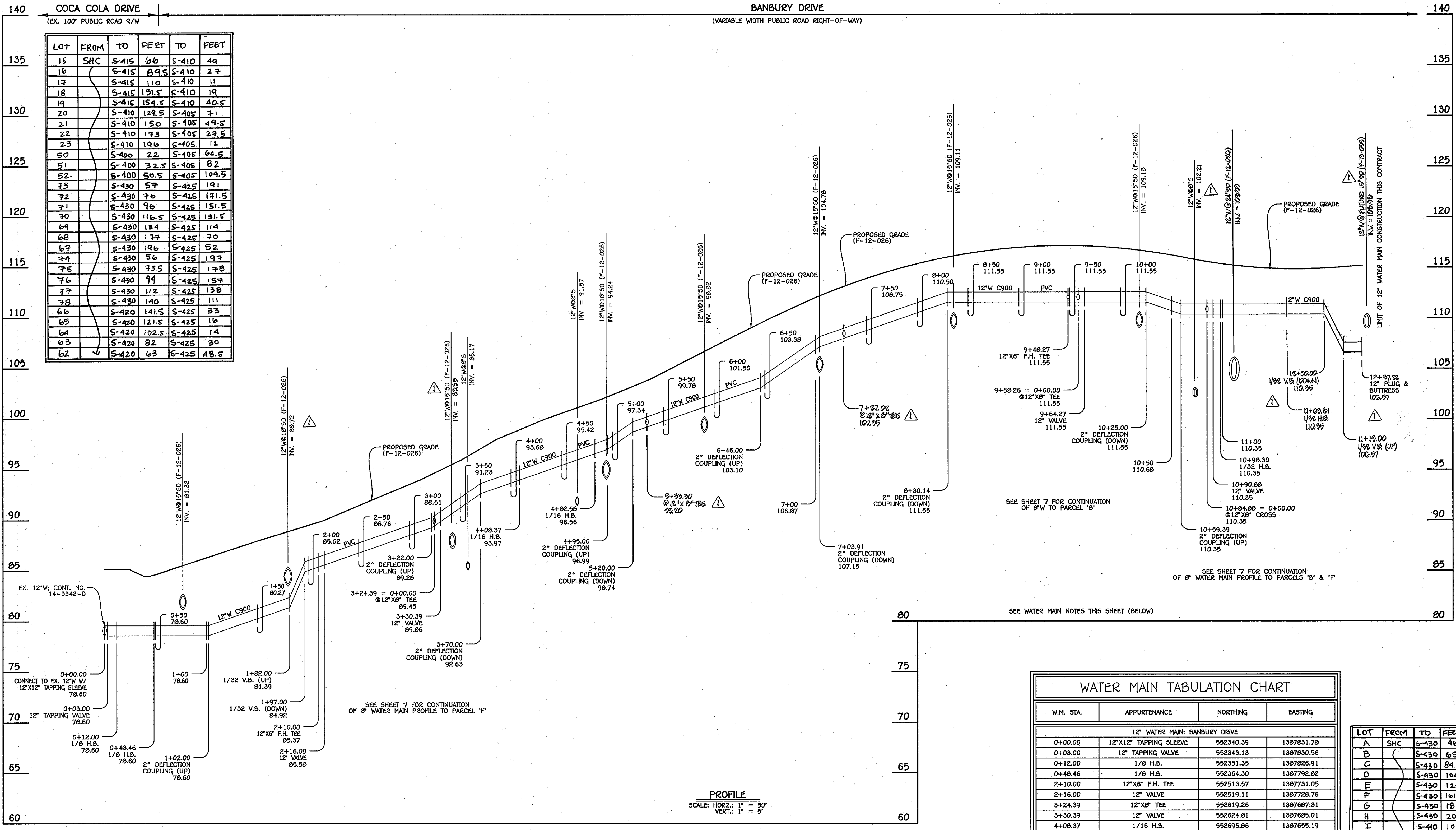
I HEREBY CERTIFY THAT THESE DOCUMENTS WERE PREPARED OR APPROVED BY ME AND THAT I AM A DULY LICENSED PROFESSIONAL ENGINEER UNDER THE LAWS OF THE STATE OF MARYLAND.  
#12043 EXPIRATION DATE IS 7/16/14.  
FISHER, COLLINS & CARTER, INC.  
CIVIL ENGINEERING CONSULTANTS & LAND SURVEYORS  
CENTRAL SQUARE OFFICE PARK - 10272 BALTIMORE NATIONAL PARK  
ELICOTT CITY, MARYLAND 21042  
(410) 461-2895

PAUL W. KRIEDEL  
PAUL W. KRIEDEL

DESIGNED BY: S.C.R.  
DRAWN BY: S.C.R.  
CHECKED BY: P.W.K.  
DATE: JULY, 2013  
BY NO. REVISION

SEWER MAINS  
PROFILES & CHARTS  
600' SCALE MAP NO. 38 BLOCK NO. 19 & 20  
F.C.C. WORK ORDER NO. 09014  
FILE NAME: WATER & SEWER MAIN EXTENSION PROFILE SHEET

OXFORD SQUARE  
PARCELS 'C' THRU 'L' & OPEN SPACE LOTS 1 & 2  
WATER & SEWER MAIN EXTENSIONS  
CONTRACT NO. 14-4726-D  
FIRST ELECTION DISTRICT  
HOWARD COUNTY, MARYLAND  
SCALE AS SHOWN  
SHEET 5 OF 8



LOT	FROM	TO	FEET	TO	FEET
15	S-415	66	S-410	49	
16	S-415	89.5	S-410	27	
17	S-415	110	S-410	11	
18	S-415	131.5	S-410	19	
19	S-415	154.5	S-410	40.5	
20	S-410	129.5	S-405	71	
21	S-410	150	S-405	49.5	
22	S-410	173	S-405	27.5	
23	S-410	196	S-405	12	
50	S-400	22	S-405	64.5	
51	S-400	22.5	S-405	82	
52	S-400	50.5	S-405	104.5	
73	S-430	57	S-425	191	
72	S-430	76	S-425	171.5	
71	S-430	96	S-425	151.5	
70	S-430	116.5	S-425	131.5	
69	S-430	134	S-425	114	
68	S-430	177	S-425	70	
67	S-430	196	S-425	52	
74	S-430	56	S-425	197	
75	S-430	75.5	S-425	178	
76	S-430	94	S-425	157	
77	S-430	112	S-425	138	
78	S-430	140	S-425	111	
66	S-420	141.5	S-425	33	
65	S-420	121.5	S-425	16	
64	S-420	102.5	S-425	14	
63	S-420	82	S-425	30	
62	S-420	63	S-425	48.5	

W.M. STA.	APPURTENANCE	NORTHING	EASTING
12" WATER MAIN: BANBURY DRIVE			
0+00.00	12"x12" TAPPING SLEEVE	552340.39	1387831.78
0+03.00	12" TAPPING VALVE	552343.13	1387830.56
0+12.00	1/8" H.B.	552351.35	1387826.91
0+48.46	1/8" H.B.	552364.30	1387792.82
2+10.00	12"x6" F.H. TEE	552513.57	1387731.05
2+16.00	12" VALVE	552519.11	1387728.76
3+24.39	12"x8" TEE	552619.26	1387687.31
3+30.39	12" VALVE	552624.81	1387685.01
4+08.27	1/16" H.B.	552696.86	1387655.19
4+82.58	1/16" H.B.	552752.32	1387605.90
5+30.39	12"x8" TEE	552774.95	1387560.91
9+48.27	12"x6" F.H. TEE	552996.42	1387187.91
9+58.26	12"x8" TEE	552960.79	1387178.33
9+64.27	12" VALVE	552963.42	1387172.93
10+84.88	12"x8" CROSS	553016.28	1387064.52
10+90.88	12" VALVE	553018.91	1387059.12
10+98.30	1/32" H.B.	553022.16	1387052.45
11+08.81	1/32" H.B.	553097.02	1386998.79
12+37.02	12" PLUG & BUTTRESS	553099.60	1386982.81
7+27.02	12"x8" TEE	552892.45	1387986.18

LOT	FROM	TO	FEET	TO	FEET
A	S-430	46	S-405	185	
B	S-430	65	S-435	165.5	
C	S-430	84.5	S-435	146	
D	S-430	104	S-435	126.5	
E	S-430	123	S-435	108	
F	S-430	141.5	S-435	89	
G	S-430	181	S-435	50	
H	S-430	201	S-435	31	
I	S-440	103	S-435	15	
J	S-440	82	S-435	18	
K	S-440	62	S-435	35.5	
L	S-440	42	S-435	55	
M	S-430	54	S-435	102	
N	S-430	72	S-435	163	
O	S-430	90.5	S-435	143	
P	S-430	110.5	S-435	123.5	
Q	S-430	129.5	S-435	104	

- WATER MAIN NOTES:**
1. ALL WATER MAINS SHALL BE AMWA C900 PVC PIPE; DR-18.
  2. ALL PIPE BEDDING, TRACER WIRE, LOCATING TAPE AND OTHER APPURTENANCES SHALL BE IN ACCORDANCE WITH THE HOWARD COUNTY DESIGN MANUAL, VOLUME II - WATER AND SEWER STANDARDS FOR AMWA C900 PVC WATER PIPE INSTALLATION.
  3. DEFLECTION COUPLINGS SHALL BE CERTAIN-TEED PVC HIGH DEFLECTION COUPLINGS.
  4. ALL WATER HOUSE CONNECTIONS AND TAPS SHALL BE PERFORMED USING A SADDLE.

**12" WATER MAIN: BANBURY DRIVE**

PROFILE  
SCALE: HORIZ.: 1" = 50'  
VERT.: 1" = 5'

DEPARTMENT OF PUBLIC WORKS  
HOWARD COUNTY, MARYLAND

*Silvia C. ...*  
CHIEF, BUREAU OF UTILITIES

DEPARTMENT OF PLANNING AND ZONING  
HOWARD COUNTY, MARYLAND

*M. G. ...*  
CHIEF, DEVELOPMENT ENGINEERING DIVISION

I HEREBY CERTIFY THAT THESE DOCUMENTS WERE PREPARED OR APPROVED BY ME, AND THAT I AM A DULY LICENSED PROFESSIONAL ENGINEER UNDER THE LAWS OF THE STATE OF MARYLAND. LICENSE NO. 12243 EXPIRATION DATE 8/31/16

**FISHER, COLLINS & CARTER, INC.**  
CIVIL ENGINEERING CONSULTANTS & LAND SURVEYORS  
CENTRAL SQUARE OFFICE PARK - 10272 BALTIMORE NATIONAL PARK  
ELICOTT CITY, MARYLAND 21042  
(410) 461-2895

PAUL W. KREBEL  
REGISTERED PROFESSIONAL ENGINEER

DESIGNED BY: B.C.R.  
DRAWN BY: B.C.R.  
CHECKED BY: KCI Z AS BUILT  
P.W.K. DATE: 7/22/15  
MAY, 2012

60' SCALE MAP NO. 38 BLOCK NO. 19 & 20  
F.C.C. WORK ORDER NO. 09014  
FILE NAME: WATER & SEWER MAIN EXTENSION PROFILE SHEET

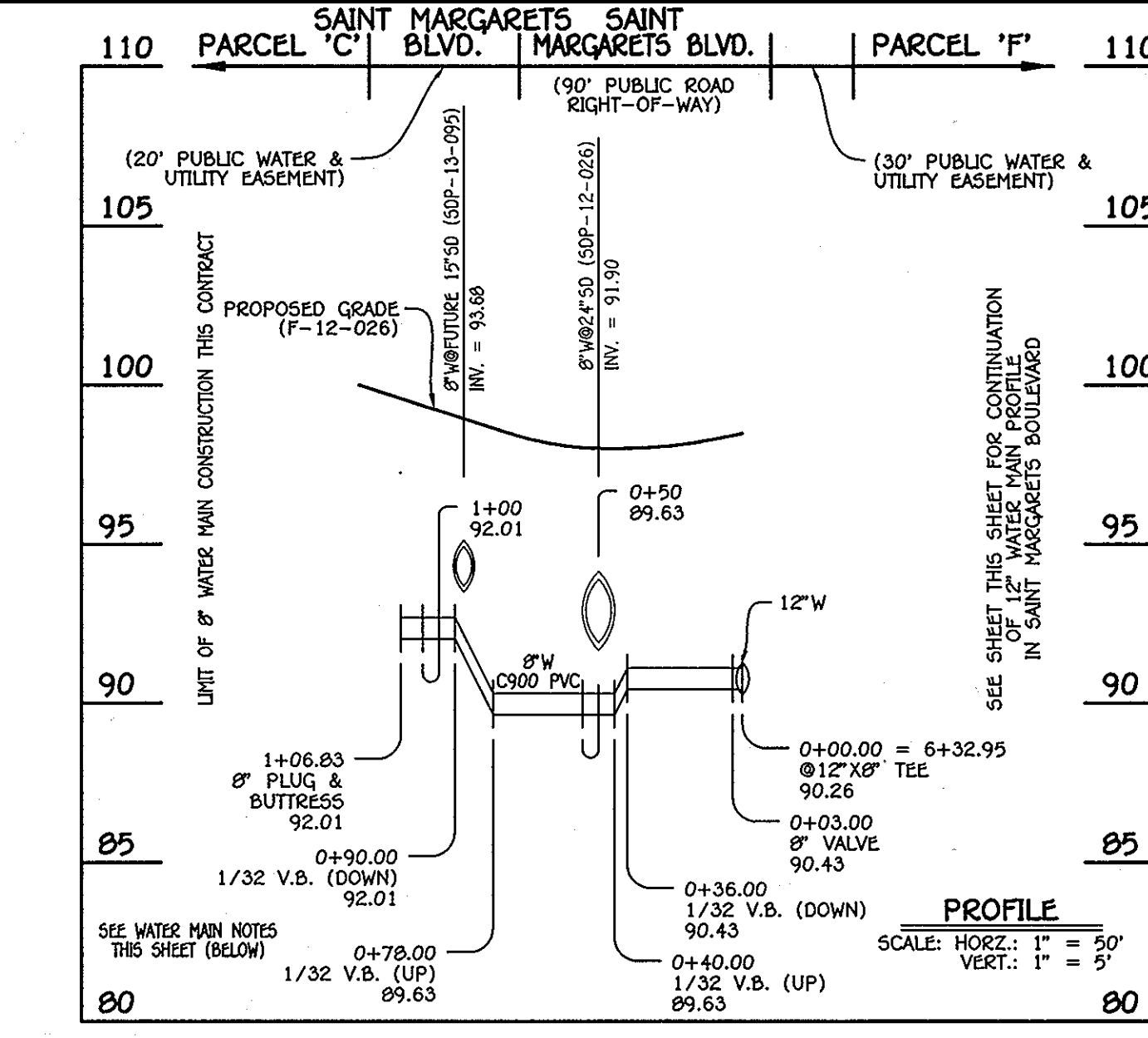
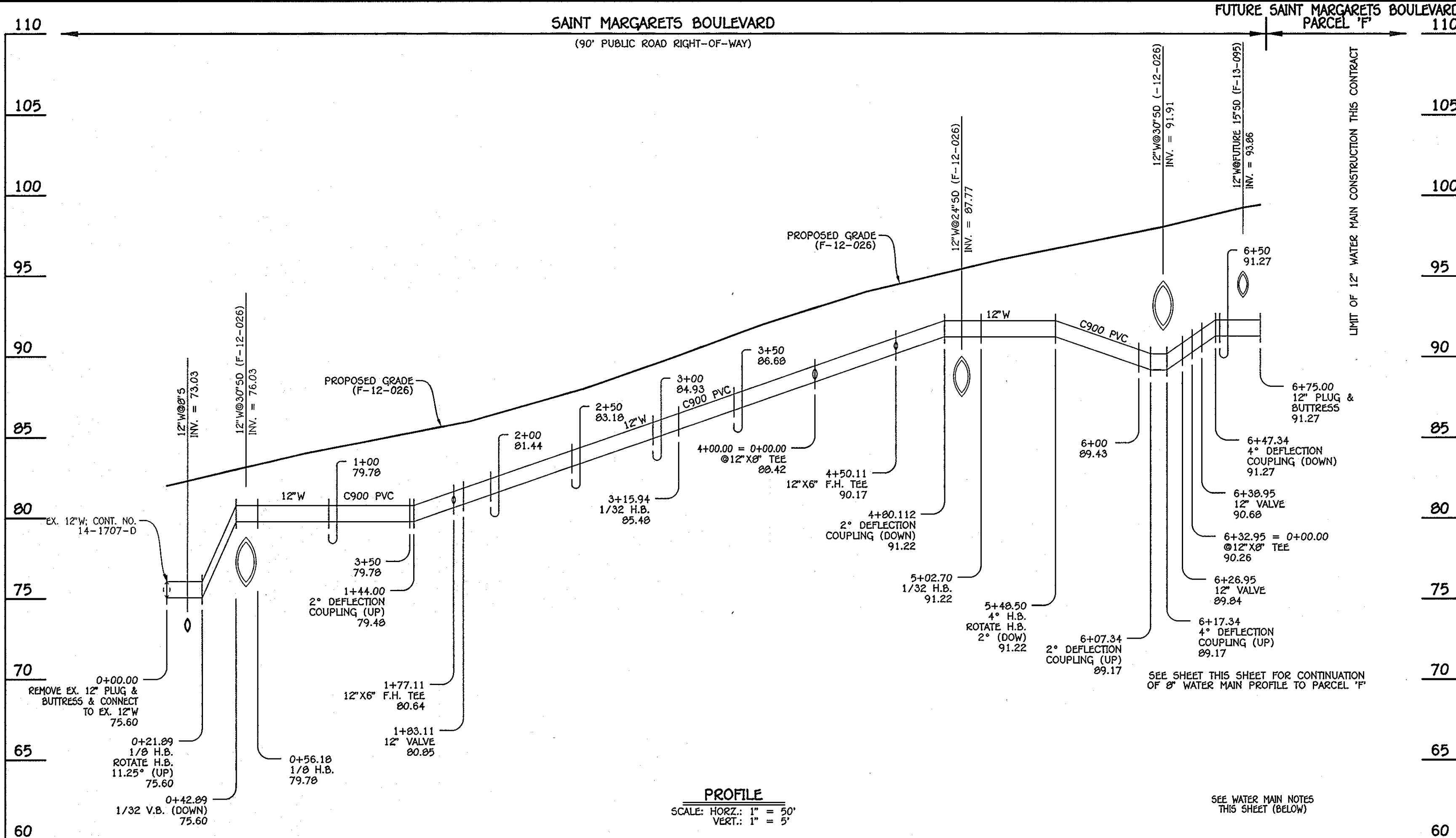
**WATER MAIN PROFILE & CHART**

**OXFORD SQUARE**  
PARCELS 'C' THRU 'L' & OPEN SPACE LOTS 1 & 2  
WATER & SEWER MAIN EXTENSIONS  
CONTRACT NO. 14-4726-D  
FIRST ELECTION DISTRICT  
HOWARD COUNTY, MARYLAND

SCALE AS SHOWN  
SHEET 6 OF 8

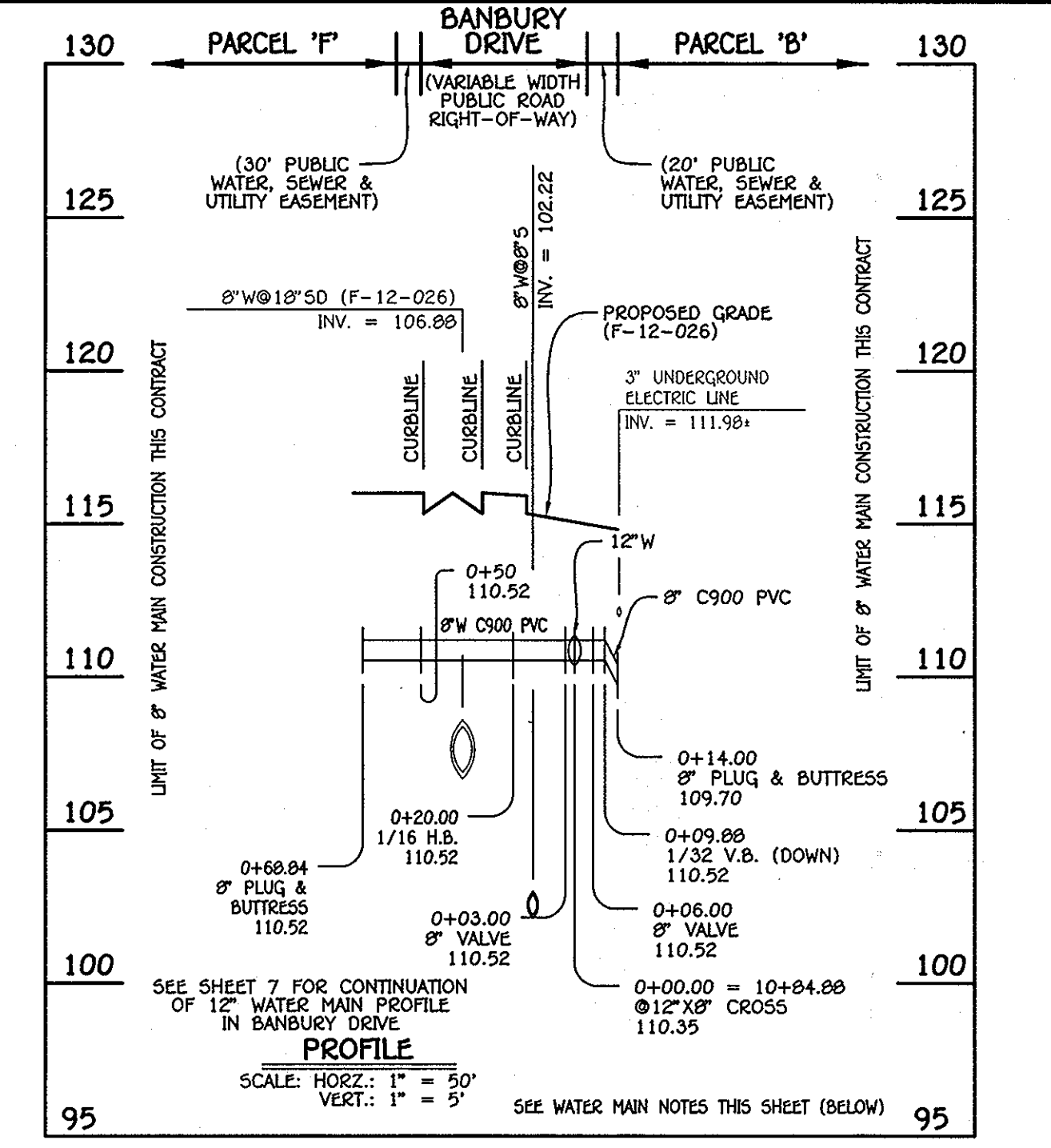
OXFORD SQUARE  
AS BUILT  
PULLS  
10/17/2013  
14-4726-D  
SEWER

CONTRACT NO. 14-4726-D  
OXFORD SQUARE  
PARCELS 'C' THRU 'L' & OPEN SPACE LOTS 1 AND 2  
WATER & SEWER MAIN EXTENSIONS  
HOWARD COUNTY, MARYLAND



8" WATER MAIN: PARCEL 'C' (S) & PARCEL 'F' (N)

WATER MAIN TABULATION CHART			
W.M. STA.	APPURTENANCE	NORTHING	EASTING
8" WATER MAIN: PARCEL 'C' (S)			
0+00.00	12" X 6" TEE	552305.61	1386897.28
0+03.00	8" VALVE	552302.92	1386895.96
1+06.83	8" PLUG & BUTTRESS	552209.82	1386809.90



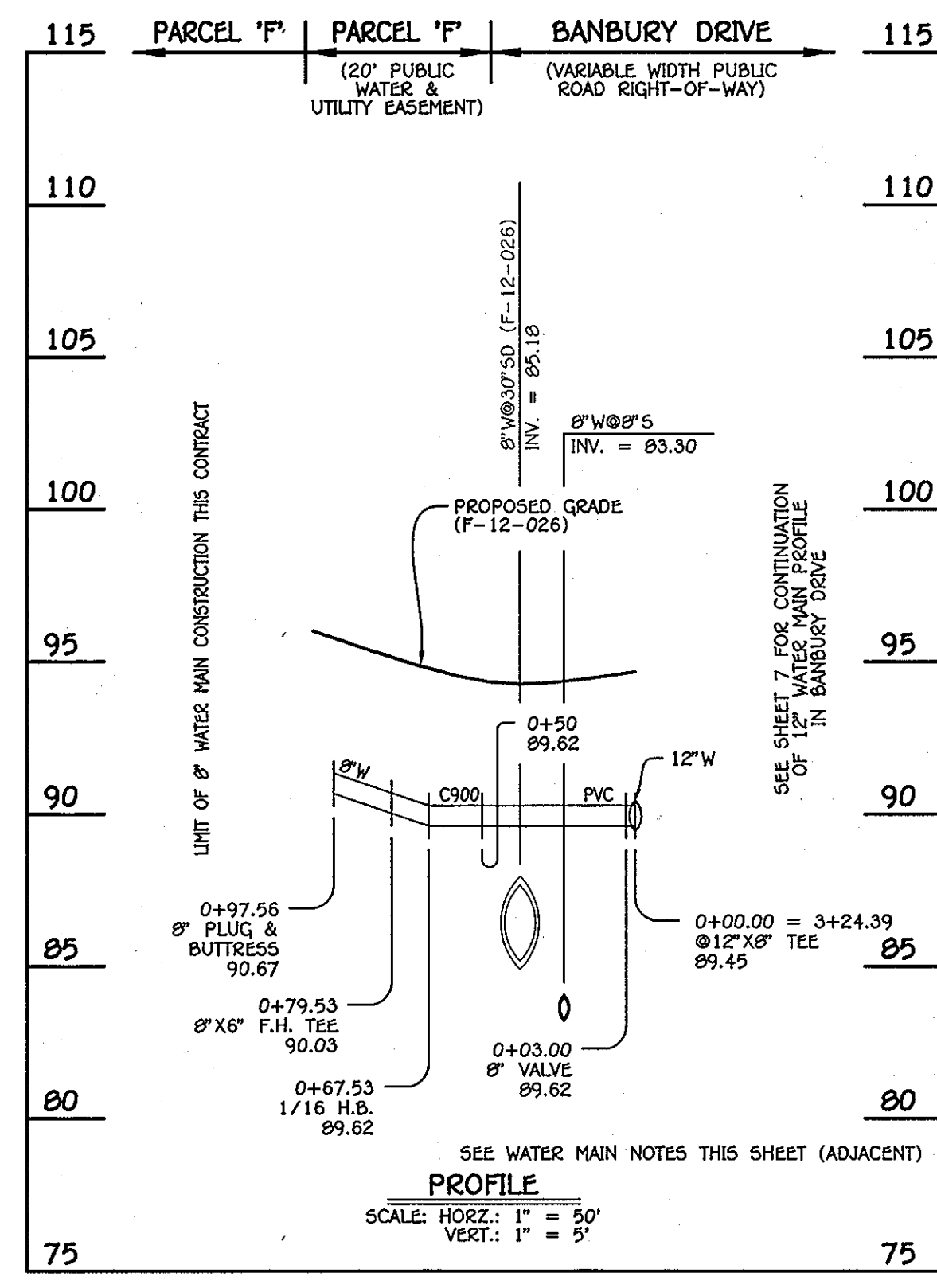
8" WATER MAINS: PARCEL 'F' (S) & PARCEL 'B' (N)

WATER MAIN TABULATION CHART			
W.M. STA.	APPURTENANCE	NORTHING	EASTING
8" WATER MAIN: PARCEL 'F' (S)			
0+00.00	12" X 6" CROSS	553016.28	1387064.52
0+03.00	8" VALVE	553013.55	1387063.26
0+20.00	1/16" H.B.	552998.27	1387055.81
0+68.84	8" PLUG & BUTTRESS	552949.51	1387053.14
8" WATER MAIN: PARCEL 'B' (N)			
0+00.00	12" X 6" CROSS	553016.28	1387064.52
0+06.00	8" VALVE	553021.67	1387067.16
0+14.00	8" PLUG & BUTTRESS	553028.84	1387070.71

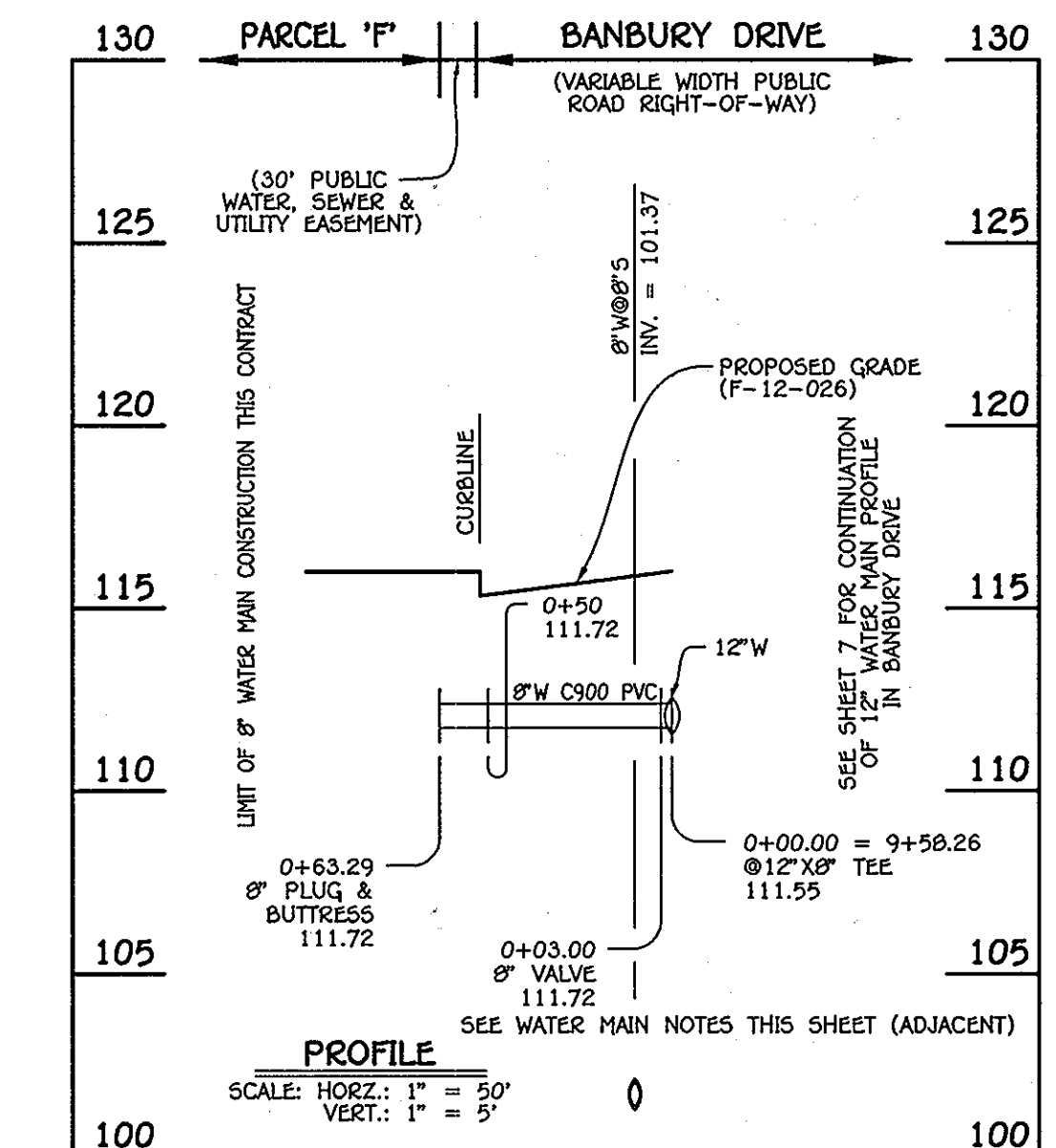
12" WATER MAIN: SAINT MARGARETS BOULEVARD

WATER MAIN TABULATION CHART			
W.M. STA.	APPURTENANCE	NORTHING	EASTING
12" WATER MAIN: SAINT MARGARETS BOULEVARD			
0+00.00	CONNECT TO EX. 12" W	551938.24	1387358.29
0+21.89	1/8" H.B.	551949.03	1387339.24
0+56.18	1/8" H.B.	551982.30	1387330.97
1+77.11	12" X 6" F.H. TEE	552045.62	1377227.94
1+83.11	12" VALVE	552048.76	1377222.82
3+15.94	1/32" H.B.	552118.31	1387109.66
4+00.00	12" X 6" TEE	552175.38	1387047.95
4+50.11	12" X 6" F.H. TEE	552209.41	1387011.16
5+02.70	1/32" H.B.	552245.12	1386972.55
5+48.50	4" H.B.	552268.24	1386933.01
6+26.95	12" VALVE	552302.95	1386862.66
6+32.95	12" X 6" TEE	552305.60	1386857.28
6+38.95	12" VALVE	552308.26	1386851.90
6+75.00	12" PLUG & BUTTRESS	552324.22	1386819.57

WATER MAIN TABULATION CHART			
W.M. STA.	APPURTENANCE	NORTHING	EASTING
8" WATER MAIN: PARCEL 'F'			
0+00.00	12" X 6" TEE	552340.39	1387831.78
0+03.00	8" VALVE	552343.13	1387830.56
0+67.53	1/16" H.B.	552351.35	1387826.91
0+79.53	8" X 6" F.H. TEE	552585.24	1387616.15
0+97.56	8" PLUG & BUTTRESS	552564.30	1387792.82

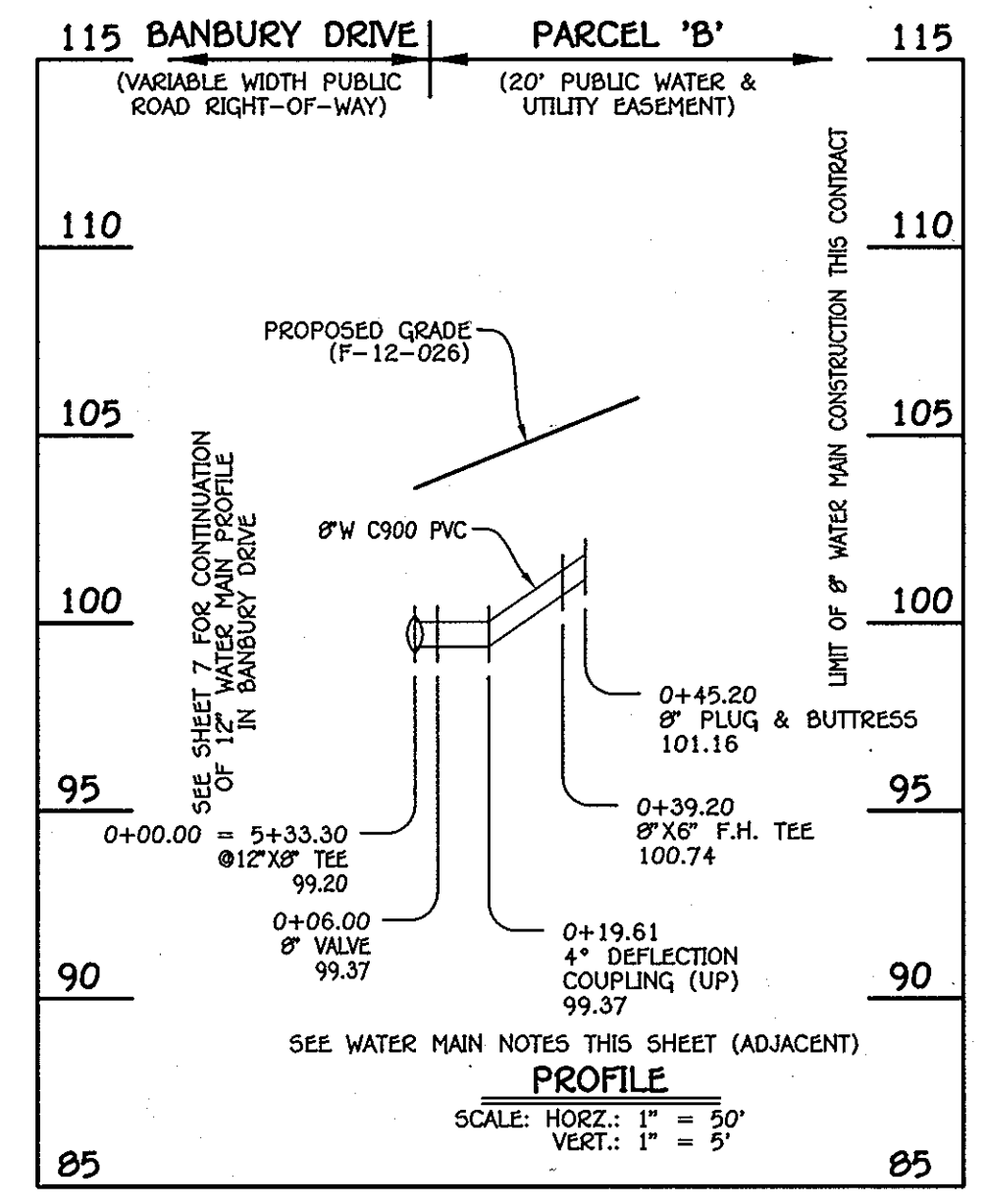


8" WATER MAIN: PARCEL 'F'



8" WATER MAIN: PARCEL 'F'

WATER MAIN TABULATION CHART			
W.M. STA.	APPURTENANCE	NORTHING	EASTING
8" WATER MAIN: PARCEL 'F'			
0+00.00	12" X 6" TEE	552960.79	1387178.33
0+03.00	8" VALVE	552958.11	1387176.99
0+63.29	8" PLUG & BUTTRESS	552904.03	137150.33



8" WATER MAIN: PARCEL 'B'

WATER MAIN TABULATION CHART			
W.M. STA.	APPURTENANCE	NORTHING	EASTING
8" WATER MAIN: PARCEL 'B'			
0+00.00	12" X 6" TEE	552774.55	1387560.31
0+06.00	8" VALVE	552779.94	1387562.95
0+35.20	8" X 6" F.H. TEE	552809.79	1387577.49
0+45.20	8" PLUG & BUTTRESS	552815.10	1387580.12

NOTE: THIS ORIGINAL CONSTRUCTION PLAN, SHEET 7 OF 8 SUPERSEDES THE WATER & SEWER MAIN CONSTRUCTION PLAN PREVIOUSLY APPROVED AND SIGNED BY THE DEPARTMENT OF PLANNING AND ZONING, ON JUNE 15, 2012.

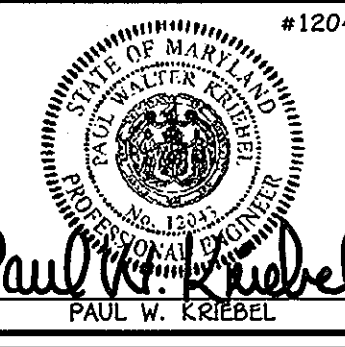
- WATER MAIN NOTES:
1. ALL WATER MAINS SHALL BE AWMA C900 PVC PIPE, DR-18.
  2. ALL PIPE BEDDING, TRACER WIRE, LOCATING TAPE AND OTHER APPURTENANCES SHALL BE IN ACCORDANCE WITH THE HOWARD COUNTY DESIGN MANUAL, VOLUME II - WATER AND SEWER STANDARDS FOR AWMA C900 PVC WATER PIPE INSTALLATION.
  3. DEFLECTION COUPLINGS SHALL BE CERTAIN-TEED PVC HIGH DEFLECTION COUPLINGS.
  4. ALL WATER HOUSE CONNECTIONS AND TAPS SHALL BE PERFORMED USING A SADDLE.

CONTRACT NO. 14-4726-D  
OXFORD SQUARE  
PARCELS 'C' THRU 'L' & OPEN SPACE LOTS 1 AND 2  
WATER & SEWER MAIN EXTENSIONS  
HOWARD COUNTY, MARYLAND

DEPARTMENT OF PUBLIC WORKS  
HOWARD COUNTY, MARYLAND  
7/21/13  
DATE

DEPARTMENT OF PLANNING AND ZONING  
HOWARD COUNTY, MARYLAND  
8/1/13  
DATE

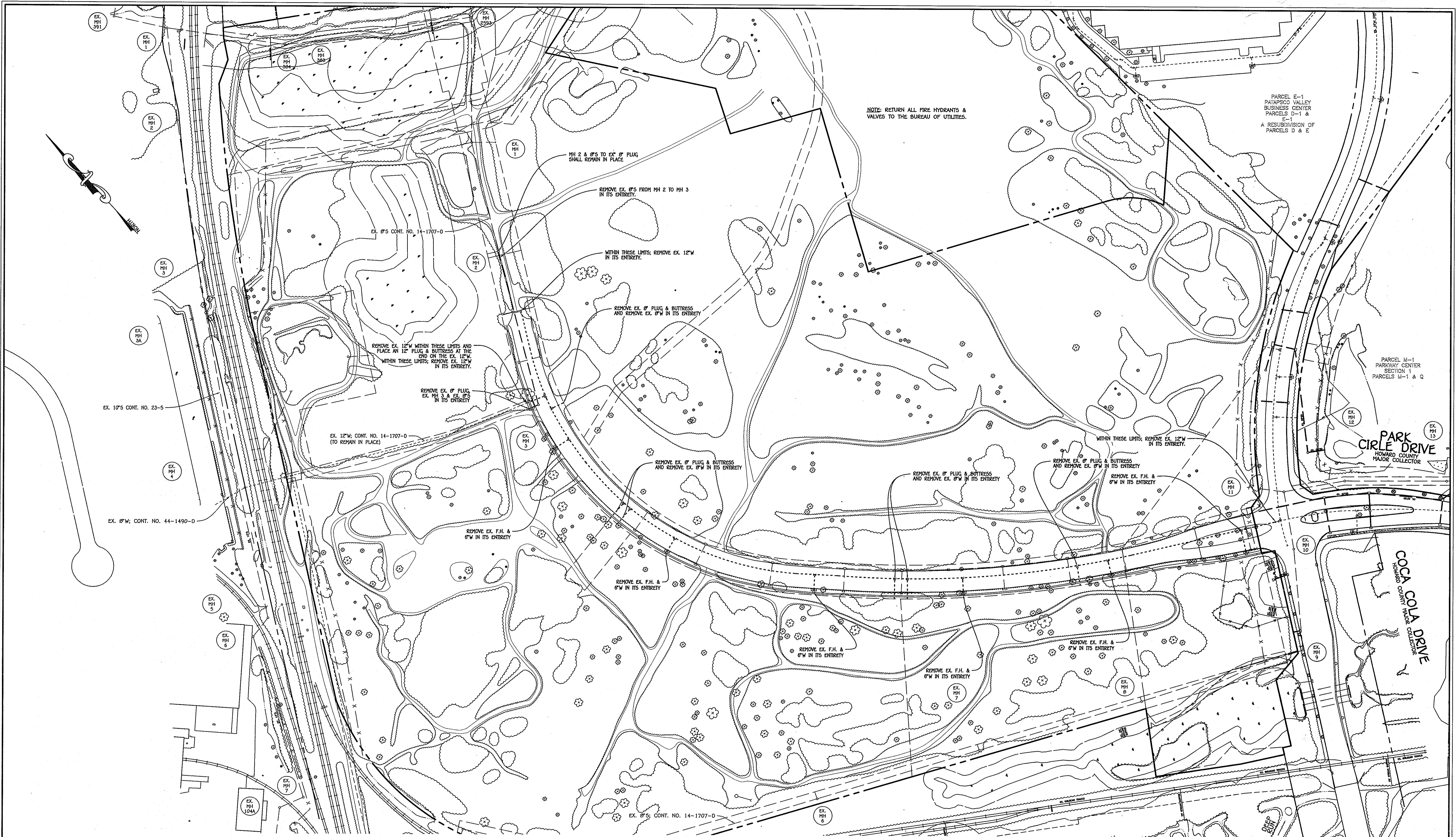
I HEREBY CERTIFY THAT THESE DOCUMENTS WERE PREPARED OR APPROVED BY ME, AND THAT I AM A DULY LICENSED PROFESSIONAL ENGINEER UNDER THE LAWS OF THE STATE OF MARYLAND.  
LICENSE NO. 12043 EXPIRATION DATE IS 7/16/12.  
FISHER, COLLINS & CARTER, INC.  
CIVIL ENGINEERING CONSULTANTS & LAND SURVEYORS  
CENTRAL SQUARE OFFICE PARK - 10272 BALTIMORE NATIONAL PkE  
ELICOTT CITY, MARYLAND 21042  
PAUL W. KRIEBEL



DESIGNED BY: B.C.R.  
DRAWN BY: B.C.R.  
CHECKED BY: P.W.K.  
DATE: JULY, 2013  
REVISION: REMOVE WATER MAIN ALIGNMENT PROFILES

WATER MAINS  
PROFILES & CHARTS  
600' SCALE MAP NO. 38 BLOCK NO. 19 & 20  
F.C.C. WORK ORDER NO. 09014  
FILE NAME: WATER & SEWER MAIN EXTENSION PROFILE

OXFORD SQUARE  
PARCELS 'C' THRU 'L' & OPEN SPACE LOTS 1 & 2  
WATER & SEWER MAIN EXTENSIONS  
CONTRACT NO. 14-4726-D  
FIRST ELECTION DISTRICT  
HOWARD COUNTY, MARYLAND  
SCALE AS SHOWN  
SHEET 7 OF 8



NOTE: RETURN ALL FIRE HYDRANTS & VALVES TO THE BUREAU OF UTILITIES.

PARCEL E-1  
PATAPSCO VALLEY  
BUSINESS CENTER  
PARCELS D-1 &  
E-1  
A RESUBDIVISION OF  
PARCELS D & E

PARCEL M-1  
PARKWAY CENTER  
SECTION 1  
PARCELS M-1 & Q

PARK CIRCLE DRIVE  
HOWARD COUNTY  
MAJOR COLLECTOR

COCA COLA DRIVE  
HOWARD COUNTY MAJOR COLLECTOR

PLAN  
SCALE: 1" = 100'

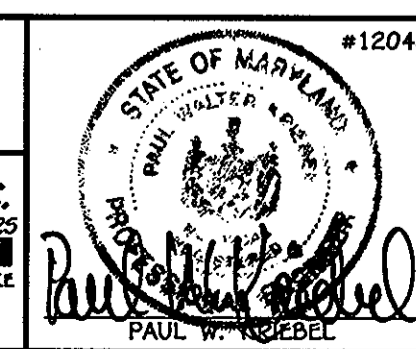
CONTRACT NO. 14-4726-D  
OXFORD SQUARE

PARCELS 'C' THRU 'L' &  
OPEN SPACE LOTS 1 AND 2  
WATER & SEWER MAIN EXTENSIONS  
HOWARD COUNTY, MARYLAND

DEPARTMENT OF PUBLIC WORKS  
HOWARD COUNTY, MARYLAND

DEPARTMENT OF PLANNING AND ZONING  
HOWARD COUNTY, MARYLAND

I HEREBY CERTIFY THAT THESE DOCUMENTS WERE PREPARED OR APPROVED BY ME, AND THAT I AM A DULY LICENSED PROFESSIONAL ENGINEER UNDER THE LAWS OF THE STATE OF MARYLAND. LICENSE NO. 12043 EXPIRATION DATE IS 7/16/18.



**FISHER, COLLINS & CARTER, INC.**  
CIVIL ENGINEERING CONSULTANTS & LAND SURVEYORS  
CONTINENTAL SQUARE OFFICE PARK - 10272 BALTIMORE NATIONAL FILE  
ELICOTT CITY, MARYLAND 21042  
410.461-2029

DESIGNED BY :	B.C.R.	
DRAWN BY :	B.C.R.	
CHECKED BY :	P.W.K.	
DATE :	MAY, 2012	
BY :	NO.	REVISION

WATER & SEWER MAINS ABANDONMENT PLAN	
600' SCALE MAP NO. 30	BLOCK NO. 19 & 20
F.C.C. WORK ORDER NO. 09014	
FILE NAME :	WATER & SEWER MAIN EXTENSION PLAN SHEET

OXFORD SQUARE  
PARCELS 'C' THRU 'L' & OPEN SPACE LOTS 1 & 2  
WATER & SEWER MAIN EXTENSIONS  
CONTRACT NO. 14-4726-D  
FIRST ELECTION DISTRICT  
HOWARD COUNTY, MARYLAND

SCALE  
AS  
SHOWN  
SHEET  
8 OF 8

*Steve C. Gann*  
CHIEF, BUREAU OF UTILITIES  
DATE

*Paul W. Weidell*  
CHIEF, DEPARTMENT ENGINEERING DIVISION  
DATE 6/15/12

1:2009/09/01:dwg/FINALS - PHASE ONE/09/01/4 Water & Sewer Base Plan - Phase 1.dwg, 5/11/2012 11:45:09 AM