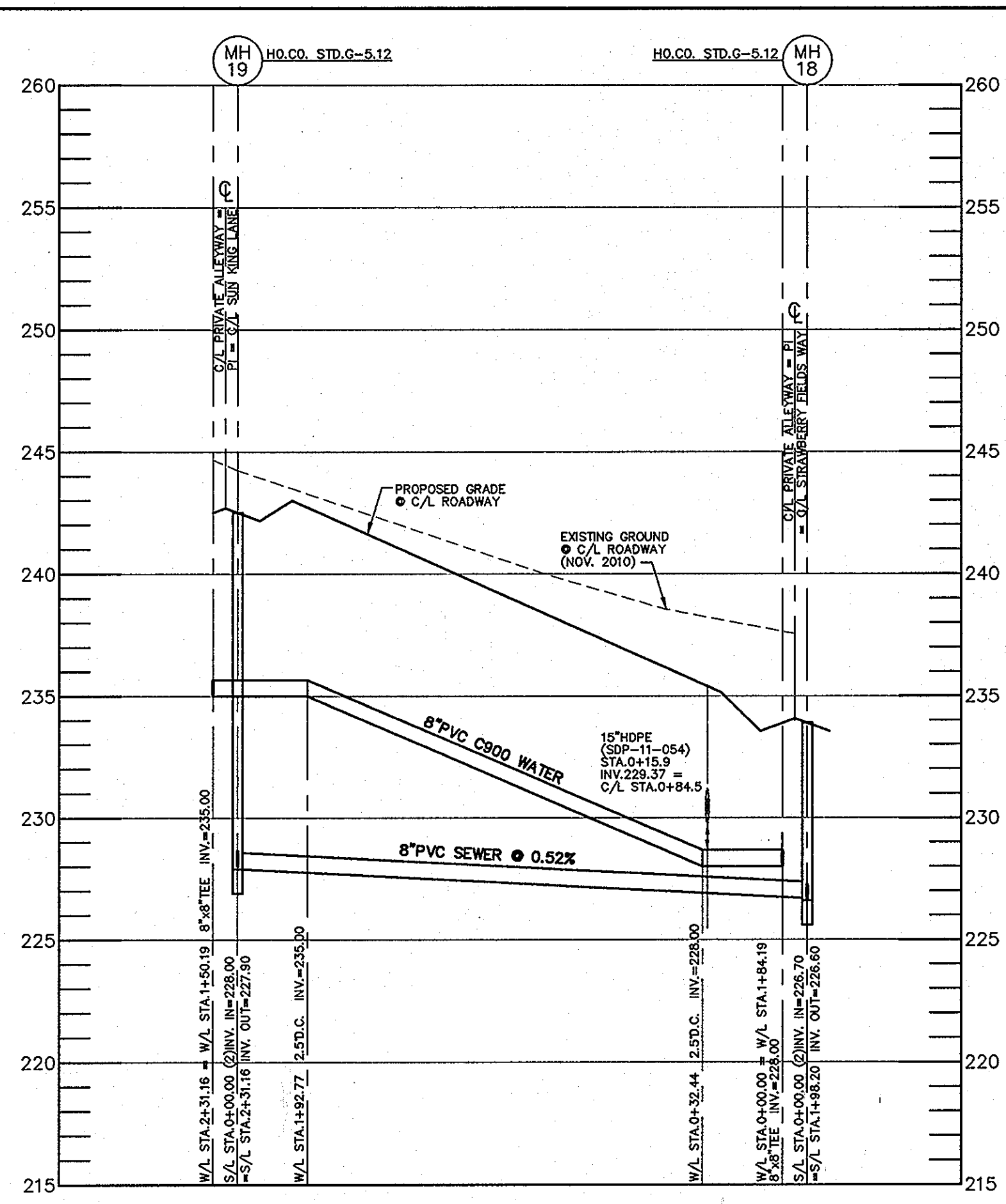
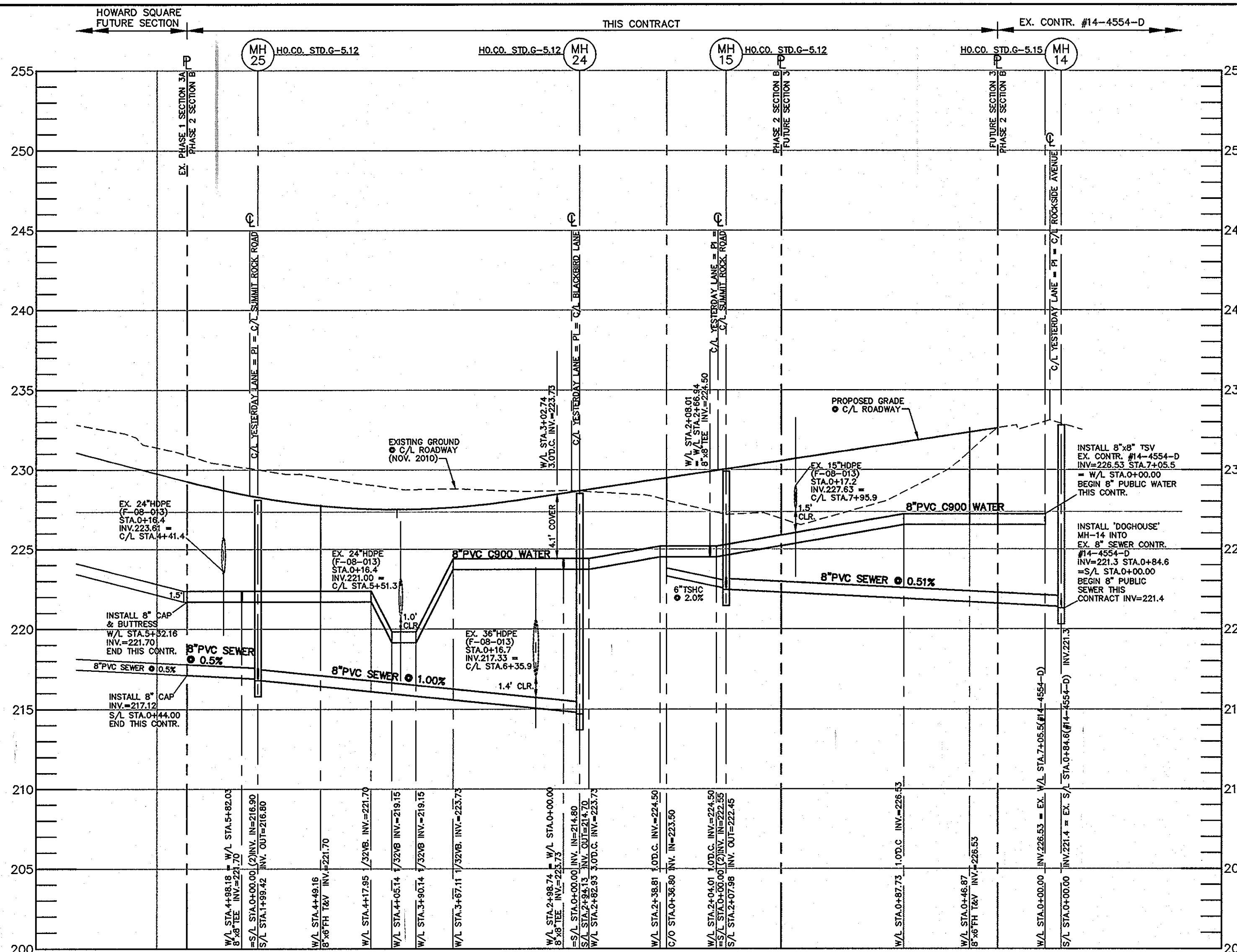


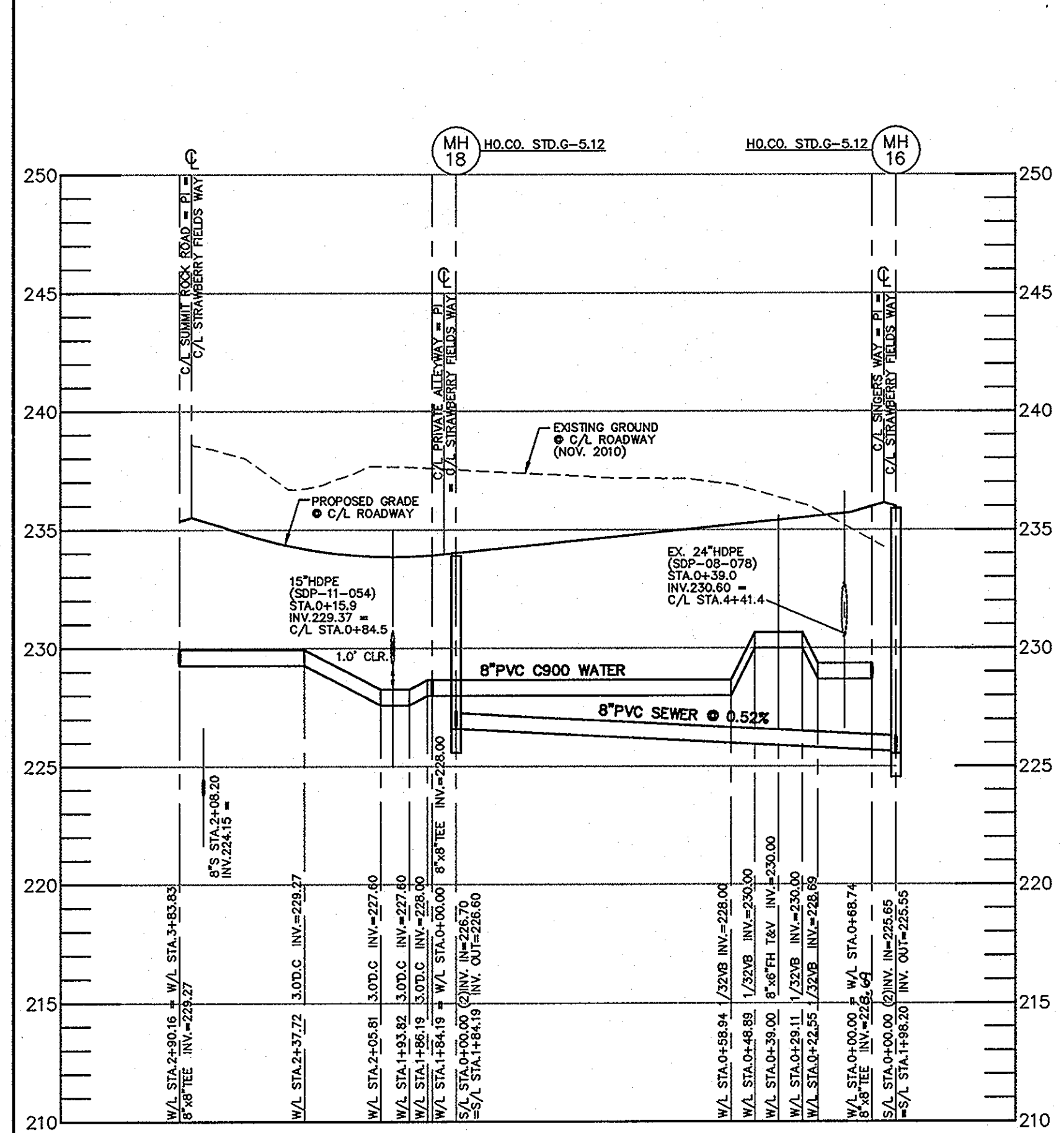
UTILITY PROFILE - SINGERS WAY
 HORIZONTAL SCALE: 1" = 50'
 VERTICAL SCALE: 1" = 5'



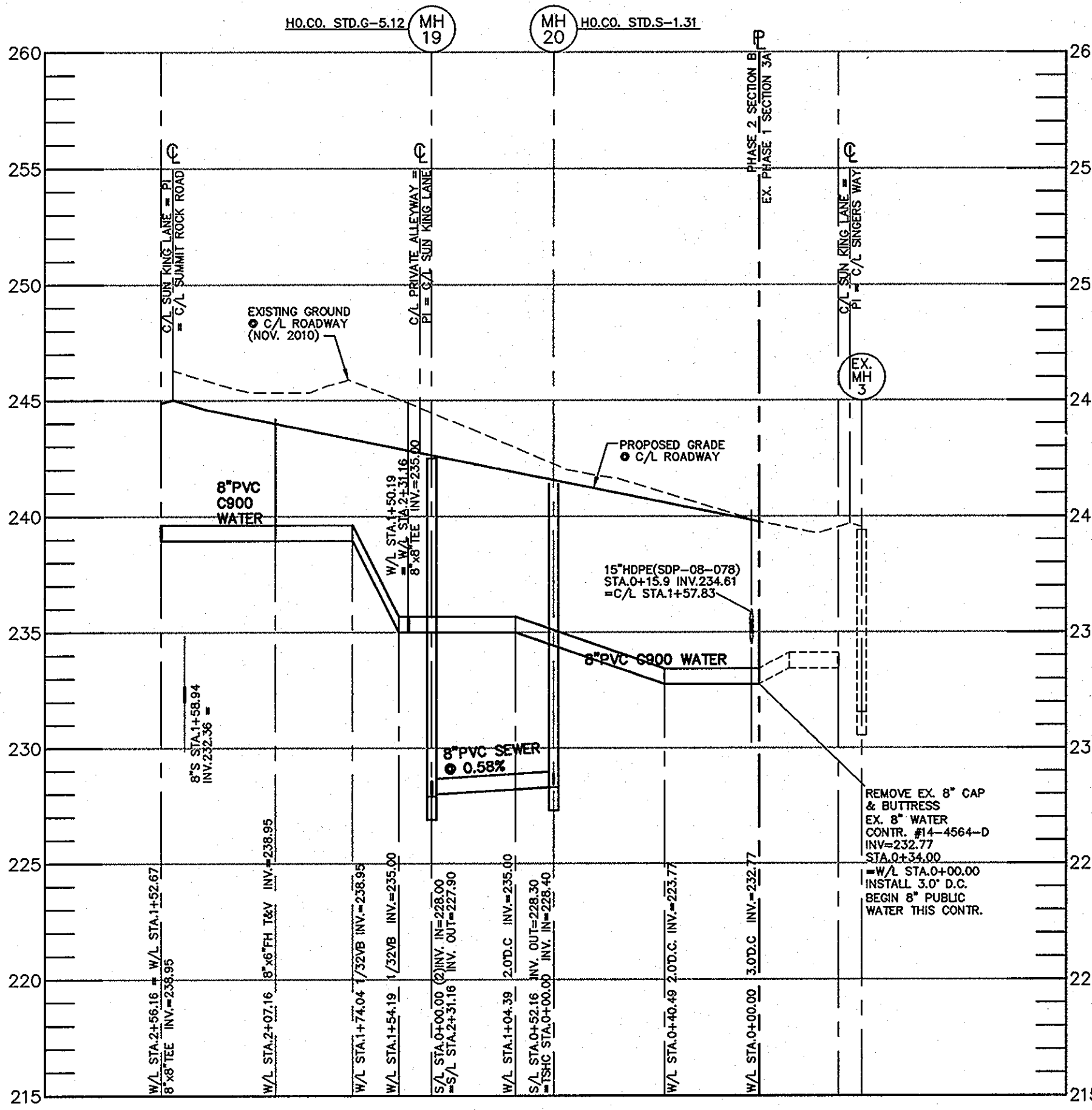
UTILITY PROFILE - ALLEYWAY
 HORIZONTAL SCALE: 1" = 50'
 VERTICAL SCALE: 1" = 5'



UTILITY PROFILE - YESTERDAY LANE
 HORIZONTAL SCALE: 1" = 50'
 VERTICAL SCALE: 1" = 5'



UTILITY PROFILE - STRAWBERRY FIELDS WAY
 HORIZONTAL SCALE: 1" = 50'
 VERTICAL SCALE: 1" = 5'



UTILITY PROFILE - SUN KING LANE
 HORIZONTAL SCALE: 1" = 50'
 VERTICAL SCALE: 1" = 5'

APPURTENANCE	WATERLINE STATION	LOCATION	OFFSET	COMMENT	WATERLINE STATION	LOCATION	OFFSET	COMMENT
POB = 8" TSV	0+00.00 = EX.7+05.5	YESTERDAY LANE STA.9+50.85	5.0 RT.	HEARTHSIDE WAY STA.10+01.0	8" TSV = PI	0+00.00 = 0+68.74	STRAWBERRY FIELDS WAY STA.2+85.18	5.0 RT. SINGERS WAY STA.7+22.62
8" TSV	0+46.87	YESTERDAY LANE STA.9+04.01	5.0 RT.		8" TSV	0+41.00	STRAWBERRY FIELDS WAY STA.2+84.18	5.0 RT.
FIRE HYDRANT	0+46.87 (13.10 LT.)	YESTERDAY LANE STA.9+04.01	18.1 RT.		8" TSV	0+39.00	STRAWBERRY FIELDS WAY STA.2+46.16	5.0 RT.
8" TSV	2+08.04 = 2+66.84	YESTERDAY LANE STA.7+42.84	5.0 RT.	SINGERS WAY STA.9+20.82	8" TSV = PI	1+84.19 = 2+31.16	STRAWBERRY FIELDS WAY STA.1+00.97	5.0 RT. PI - ALLEYWAY
8" TSV	2+98.74 = 0+00.00	YESTERDAY LANE STA.8+51.11	5.0 RT.	BLACKBIRD LANE STA.0+05 BK	8" TSV	2+89.16	STRAWBERRY FIELDS WAY STA.0+04 BK	5.0 RT.
8" TSV	4+49.20	YESTERDAY LANE STA.5+01.89	18.1 RT.		8" TSV	2+90.16 = 3+43.83	STRAWBERRY FIELDS WAY STA.0+05 BK	5.0 RT. SUMMIT ROCK ROAD STA.4+22.83
FIRE HYDRANT	4+49.20 (13.10 LT.)	YESTERDAY LANE STA.5+01.89	18.1 RT.	BURY HT. = 6.0'				
8" TSV	4+98.20 = 5+82.03	YESTERDAY LANE STA.4+52.69	5.0 RT.	SUMMIT ROCK ROAD STA.6+21.03	EX. 8" CAP & BUTTRESS	0+00.00 = EX.0+34.0	SINGERS WAY STA.6+53.68	5.0 RT. POB = P/L
8" CAP & BUTTRESS	5+32.20	YESTERDAY LANE STA.4+18.69	5.0 RT.	8" CAP & BUTT. END = P/L	8" TSV	0+68.74	SINGERS WAY STA.7+22.62	5.0 RT. STRAWBERRY FIELDS WAY STA.2+85.18
EX. 8" CAP & BUTTRESS	0+00.00 = EX.0+34.0	SUMMIT ROCK ROAD STA.0+39.00	5.0 LT.	POB = P/L	8" TSV	2+66.84 = 2+68.04	SINGERS WAY STA.7+42.84	5.0 RT. YESTERDAY LANE STA.7+22.62
8" TSV	1+52.67 = 2+56.16	SUMMIT ROCK ROAD STA.1+91.67	5.0 LT.	SUN KING LANE STA.2+95.16 FW	8" TSV	0+68.74	SINGERS WAY STA.7+22.62	5.0 RT.
8" TSV	3+01.62 = 0+00.00	SUMMIT ROCK ROAD STA.3+40.62	5.0 LT.	FREE BIRD LANE STA.0+05.00	8" TSV	0+00.00 = 1+50.19	PI - ALLEYWAY	5.0 LT. SUN KING LANE STA.1+89.19
8" TSV	3+83.83 = 2+90.16	SUMMIT ROCK ROAD STA.4+22.83	5.0 LT.	STRAWBERRY FIELDS WAY STA.0+05 BK	8" TSV	0+01.00	ALLEYWAY	5.0 LT.
8" TSV	5+81.03	SUMMIT ROCK ROAD STA.6+21.03	5.0 LT.		8" TSV	2+32.16	ALLEYWAY	5.0 LT.
8" TSV	4+98.20 = 5+82.03	SUMMIT ROCK ROAD STA.6+21.03	5.0 LT.	YESTERDAY LANE STA.4+52.69	8" TSV	2+31.16 = 1+84.19	PI - ALLEYWAY	5.0 LT. STRAWBERRY FIELDS WAY STA.1+00.97
EX. 8" CAP & BUTTRESS	0+00.00 = EX.0+34.0	SUN KING LANE STA.0+39.00	5.0 LT.	POB = P/L	8" TSV	0+00.00 = 3+01.62	FREE BIRD LANE STA.0+05 BK	5.0 LT. SUMMIT ROCK ROAD STA.3+40.62
8" TSV	1+50.19 = 0+00.00	SUN KING LANE STA.1+89.19	5.0 LT.	PI - ALLEYWAY	8" TSV	0+01.00	FREE BIRD LANE STA.0+04 BK	5.0 LT.
8" TSV	2+07.16	SUN KING LANE STA.2+44.16	5.0 LT.		8" CAP & BUTTRESS	0+34.00	FREE BIRD LANE STA.0+39.00	5.0 LT. 8" CAP & BUTT. END = P/L
FIRE HYDRANT	2+07.16 (13.10 LT.)	SUN KING LANE STA.2+44.16	18.1 RT.	BURY HT. = 5.5'				
8" TSV	2+55.16	SUN KING LANE STA.2+94.16 FW	5.0 LT.		8" TSV	0+00.00 = 2+98.74	BLACKBIRD LANE STA.0+05 BK	5.0 LT. YESTERDAY LANE STA.6+57.11
8" TSV	2+56.16 = 1+52.67	SUN KING LANE STA.2+95.16 FW	5.0 LT.	SUMMIT ROCK ROAD STA.1+91.67	8" TSV	0+01.00	BLACKBIRD LANE STA.0+04 BK	5.0 LT.
					8" CAP & BUTTRESS	0+43.97	BLACKBIRD LANE STA.0+38.97	5.0 LT. 8" CAP & BUTT. END = P/L

NO.	TYPE	LOCATION	INVERT IN	SHC INV.	INVERT OUT	TOP ELEV.	HO.CO. STD.	REMARKS
MH-14	4.0' PRE-CAST	YESTERDAY LANE	221.40	-	221.3	232.7	G-5.15	EX. CONTR. #14-4554-D
MH-15	STD. 4.0' PRE-CAST	YESTERDAY LANE / SINGERS WAY	222.55	222.55	222.45	229.9	G-5.12	-
MH-16	STD. 4.0' PRE-CAST	SINGERS WAY / STRAWBERRY FIELDS WAY	(2) 225.55	-	225.45	235.8	G-5.12	-
MH-17	TERMINAL	SINGERS WAY	-	226.05	225.95	237.1	S-1.31	-
MH-18	STD. 4.0' PRE-CAST	STRAWBERRY FIELDS WAY / ALLEYWAY	228.70	228.70	228.60	233.9	G-5.12	-
MH-19	STD. 4.0' PRE-CAST	ALLEYWAY / SUN KING LANE	228.00	228.00	227.90	242.5	G-5.12	-
MH-20	TERMINAL	SUN KING LANE	-	228.40	228.30	241.4	S-1.31	-
MH-21	4.0'	PORT CAPITAL DRIVE @ R/W	202.10	-	202.0	215.5	G-5.15	EX. CONTR. #645-WAS
MH-22	STD. 4.0' PRE-CAST	R/W @ P/L = BLACKBIRD LANE	208.60	-	208.50	222.1	G-5.12	-
MH-23	STD. 4.0' PRE-CAST	BLACKBIRD LANE	211.70	-	211.60	224.1	G-5.12	-
MH-24	STD. 4.0' PRE-CAST	BLACKBIRD LANE / YESTERDAY LANE	214.80	-	214.70	228.5	G-5.12	-
MH-25	STD. 4.0' PRE-CAST	YESTERDAY LANE / SUMMIT ROCK ROAD	(2) 216.90	-	216.80	228.1	G-5.12	FUTURE SECTION
MH-26	STD. 4.0' PRE-CAST	SUMMIT ROCK ROAD / FREEBIRD LANE	(2) 228.80	228.80	228.70	238.5	G-5.12	FUTURE SECTION
MH-27	TERMINAL	SUMMIT ROCK ROAD	-	237.43	237.03	250.7	S-1.31	-

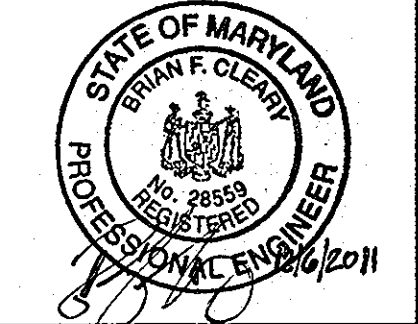
NOTE: HOUSE CONNECTIONS TO BE SIZED ACCORDINGLY:
 SINGLE WHC = 1-1/2"
 TWIN WHC = 1-1/2"
 SINGLE SHC = 4"
 TWIN SHC = 6"x4"

NOTE: ALL JOINTS AND CONNECTIONS LOCATED WITHIN STRUCTURAL FILL AREAS SHALL BE MECHANICALLY RESTRAINED IN ACCORDANCE WITH HOWARD COUNTY DESIGN MANUAL, VOLUME IV, STANDARD SPECIFICATIONS AND DETAILS FOR CONSTRUCTION (LATEST EDITION)

DEPARTMENT OF PUBLIC WORKS
 HOWARD COUNTY, MARYLAND
 DATE: 12/20/12

DEPARTMENT OF PLANNING AND ZONING
 HOWARD COUNTY, MARYLAND
 DATE: 12/12/12

BENCHMARK ENGINEERING, INC.
 8480 BALTIMORE NATIONAL PIKE & SUITE 418
 ELICOTT CITY, MARYLAND 21117
 PHONE: 410-465-8105 FAX: 410-465-6844



DBS: MCR
 DRN: MCR
 CHK: BFC
 DATE: 10/12/2011
 BY: BEI 1
 NO. 1
 REVISIONS: Fix SCRIBENERS ERROR

PUBLIC WATER AND SEWER PROFILE VIEWS
 DATE: 7/17/12
 600 SCALE MAPS: 43
 BLOCKS: 3 & 9

HOWARD SQUARE PHASE 2, SECTION B
 (L.F.)
 TAX MAP 43, PARCEL A-3, GRIDS 3 & 9
 FIRST ELECTION DISTRICT
 HOWARD COUNTY, MARYLAND
CONTRACT No. 14-4710-D
 SHEET NO. 4 OF 4