





SEWER MANHOLE LOCATIONS LOT 219		
MH No.	NAD '83/91 COORDINATES	
	NORTH	EAST
62	534,324	1,355,650

SEWER MANHOLE LOCATIONS HENRY HEARN WAY		
MH No.	STATION	OFFSET
59	2+54	7.0' RIGHT

SEWER MANHOLE LOCATIONS BALSAM WAY		
MH No.	STATION	OFFSET
60	1+51	4.0' LEFT
61	5+22	6.0' LEFT

SEWER MANHOLE LOCATIONS LOT 3		
MH No.	NAD '83/91 COORDINATES	
	NORTH	EAST
57	530,543	1,353,154
58	530,662	1,353,154

SEWER MANHOLE LOCATIONS LOT 7		
MH No.	NAD '83/91 COORDINATES	
	NORTH	EAST
56	530,635	1,353,135

ASBUILT UTILITY LOCATION CHART - LOT 220		
FROM	TO	DISTANCE
1 1/2" WHC	1" WHC @ OPEN SPACE	85.00'
1 1/2" WHC	1 1/2" WHC LOT 219	83.00'
4" SHC	MH 2	8.00'
4" SHC	SHC LOT 219	64.00'

SEWER MANHOLE LOCATIONS OPEN SPACE LOT 255		
MH No.	NAD '83/91 COORDINATES	
	NORTH	EAST
51	530,244	1,354,176
53	530,345	1,354,141
54	530,452	1,353,105

GORMAN ROAD TIE-IN TO NEW 8" WATER (WINCOPIA FARMS WAY)		
FROM	TO	DISTANCE
12" VALVE (GORMAN ROAD)	POWER POLE #B4306	91.00'
12" VALVE (GORMAN ROAD)	6" F.H. VALVE (WINCOPIA FARMS WAY)	71.00'
8" VALVE (GORMAN ROAD)	POWER POLE #B4306	81.00'
8" VALVE (GORMAN ROAD)	POWER POLE #B4306	70.00'
6" F.H. VALVE	FIRE HYDRANT	7.00'
6" F.H. VALVE	CONTINUITY VALVE	8.00'
6" F.H. VALVE	CONTINUITY VALVE	2.50'

ASBUILT UTILITY LOCATION CHART - LOT 213		
FROM	TO	DISTANCE
1 1/2" WHC	MH 60	91.00'
1 1/2" WHC	F.H. HENRY HEARN WAY	46.00'
1 1/2" WHC	SHC LOT 213	6.00'
1 1/2" WHC	WHC LOT 195	54.00'
4" SHC	8" VALVE (BALSAM WAY WATER)	62.50'
4" SHC	MH 59	72.00'
4" SHC	F.H. HENRY HEARN WAY	48.00'

ASBUILT UTILITY LOCATION CHART - LOT 193		
FROM	TO	DISTANCE
1 1/2" WHC	SHC LOT 193	14.00'
1 1/2" WHC	8" VALVE (HENRY HEARN WAY WATER)	62.00'
4" SHC	8" VALVE (BALSAM WAY WATER)	50.00'
4" SHC	MH 59	76.00'

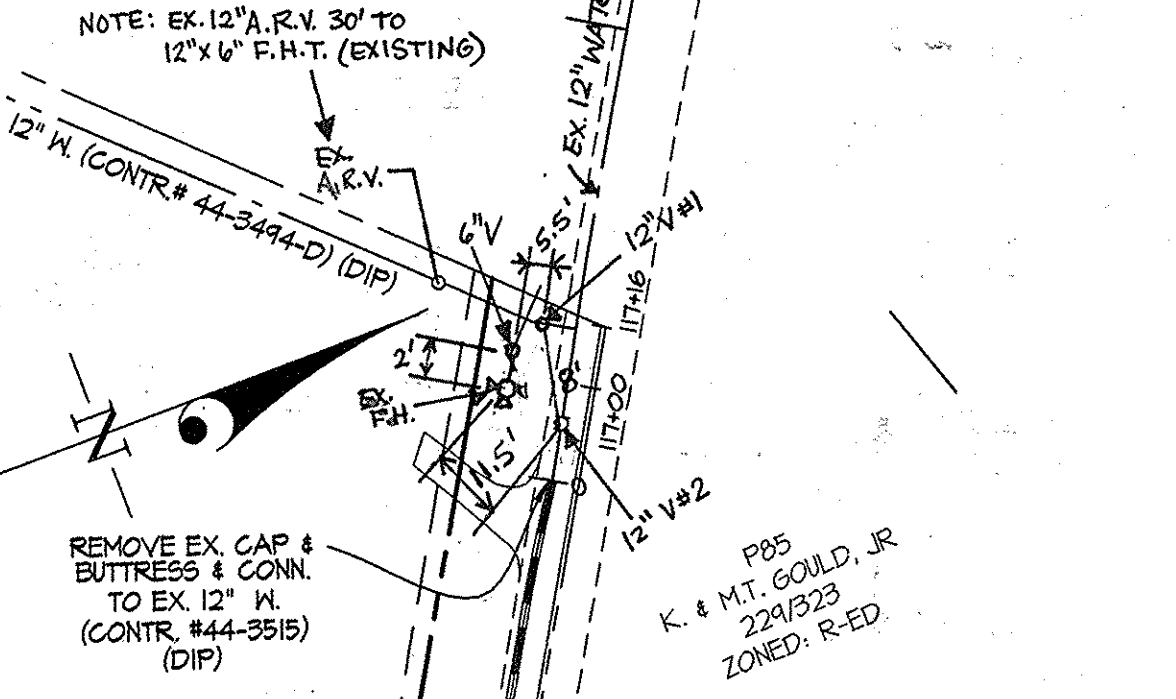
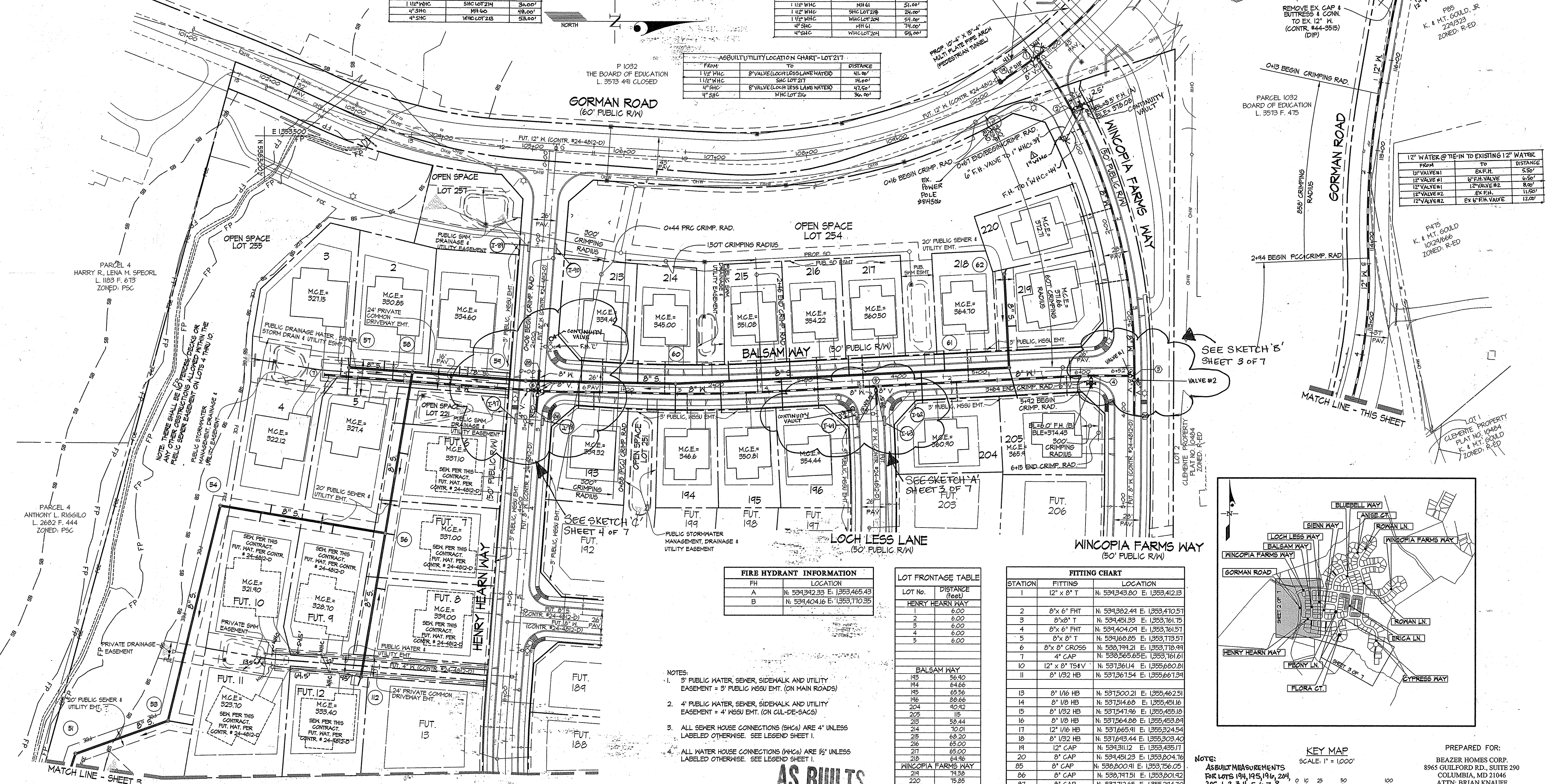
ASBUILT UTILITY LOCATION CHART - LOT 215		
FROM	TO	DISTANCE
1 1/2" WHC	WHC LOT 195	53.00'
1 1/2" WHC	MH 60	92.00'
4" SHC	MH 60	63.00'
4" SHC	WHC LOT 215	32.00'

ASBUILT UTILITY LOCATION CHART - LOT 216		
FROM	TO	DISTANCE
1 1/2" WHC	8" VALVE (LOCH LESS LANE WATER)	73.00'
1 1/2" WHC	SHC LOT 216	23.00'
1 1/2" WHC	WHC LOT 196	52.00'
4" SHC	WHC LOT 215	31.00'
4" SHC	WHC LOT 216	63.00'
4" SHC	8" VALVE (LOCH LESS LANE WATER)	100.00'

ASBUILT UTILITY LOCATION CHART - LOT 219		
FROM	TO	DISTANCE
1 1/2" WHC	8" VALVE (BALSAM WAY)	103.00'
1 1/2" WHC	WHC LOT 219	83.00'
4" SHC	MH 61	67.00'
4" SHC	MH 61	48.00'

ASBUILT UTILITY LOCATION CHART - LOT 218		
FROM	TO	DISTANCE
1 1/2" WHC	MH 61	51.00'
1 1/2" WHC	SHC LOT 218	24.00'
1 1/2" WHC	WHC LOT 204	51.00'
4" SHC	MH 61	74.00'
4" SHC	WHC LOT 204	55.00'

ASBUILT UTILITY LOCATION CHART - LOT 217		
FROM	TO	DISTANCE
1 1/2" WHC	8" VALVE (LOCH LESS LANE WATER)	41.00'
1 1/2" WHC	SHC LOT 217	14.00'
4" SHC	8" VALVE (LOCH LESS LANE WATER)	41.50'
4" SHC	WHC LOT 216	30.00'



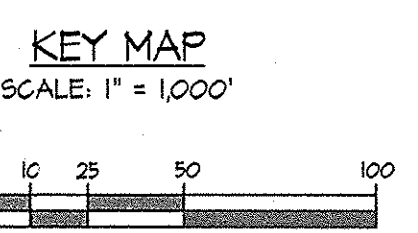
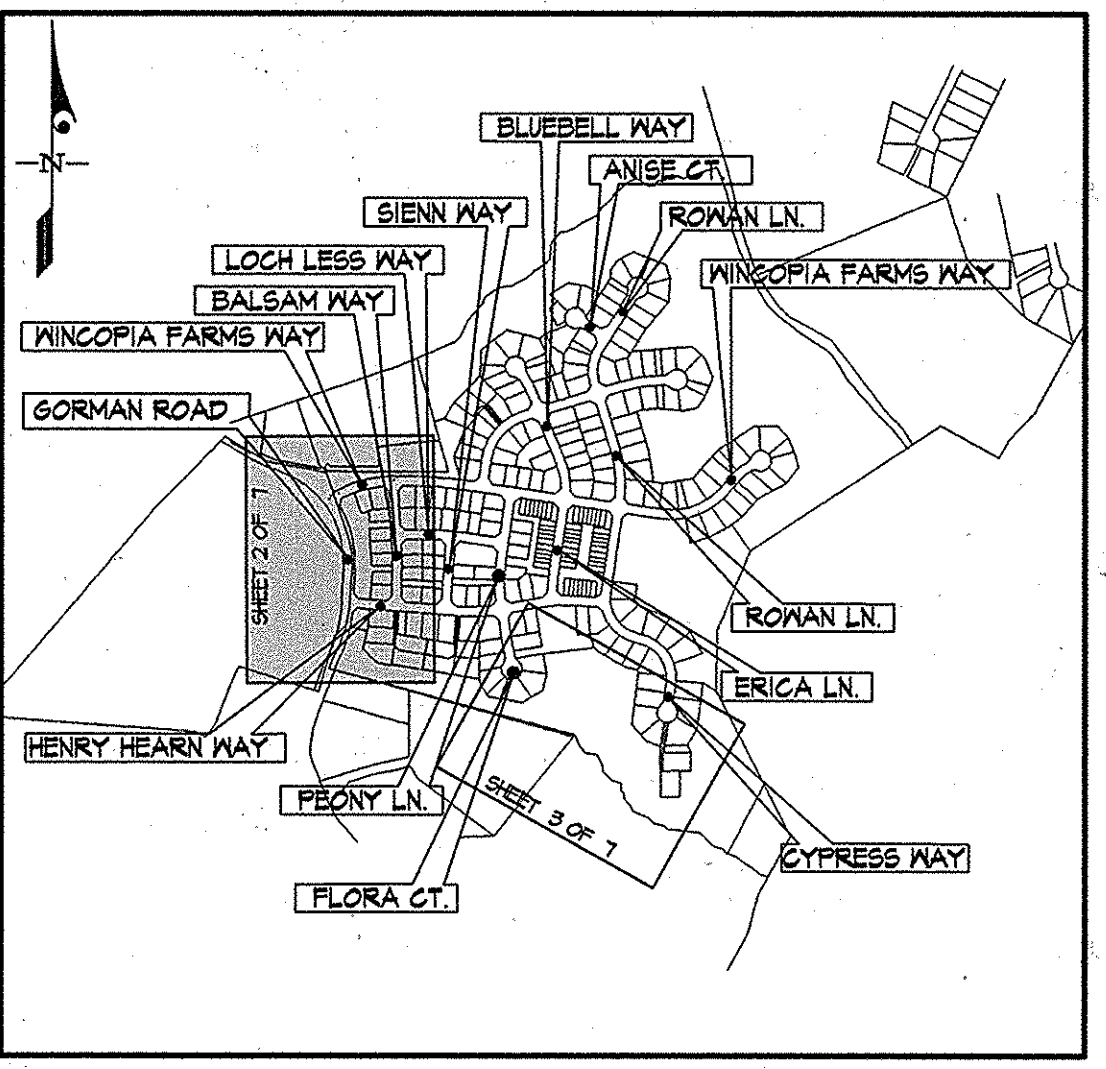
12" WATER @ TIE-IN TO EXISTING 12" WATER		
FROM	TO	DISTANCE
12" VALVE #1	EX.F.H.	5.50'
12" VALVE #1	6" F.H. VALVE	6.50'
12" VALVE #2	EX.F.H.	11.50'
12" VALVE #2	EX.F.H. VALVE	12.00'

FIRE HYDRANT INFORMATION	
FH	LOCATION
A	N: 534,342.33 E: 1,353,465.43
B	N: 534,404.16 E: 1,353,710.35

LOT FRONTAGE TABLE	
LOT No.	DISTANCE (feet)
HENRY HEARN WAY	
1	6.00
2	6.00
3	6.00
4	6.00
5	6.00
BALSAM WAY	
193	56.40
194	64.66
195	65.56
196	88.66
204	40.42
205	15
206	58.44
214	10.01
215	68.20
216	65.00
217	65.00
218	64.46
WINCOPIA FARMS WAY	
219	74.38
220	15.25

FITTING CHART		
STATION	FITTING	LOCATION
1	12" x 8" T	N: 534,343.00 E: 1,353,412.13
2	8" x 6" FHT	N: 534,382.44 E: 1,353,410.51
3	8" x 8" T	N: 534,451.33 E: 1,353,161.75
4	8" x 6" FHT	N: 534,404.04 E: 1,353,161.57
5	8" x 8" T	N: 534,168.05 E: 1,353,113.57
6	8" x 8" CROSS	N: 530,144.21 E: 1,353,118.49
7	4" CAP	N: 530,565.65 E: 1,353,161.61
10	12" x 8" T54 V	N: 531,261.14 E: 1,355,680.81
11	8" 1/32 HB	N: 531,361.54 E: 1,355,667.34
13	8" 1/16 HB	N: 531,500.21 E: 1,355,462.51
14	8" 1/8 HB	N: 531,514.60 E: 1,355,451.16
15	8" 1/32 HB	N: 531,547.46 E: 1,355,455.18
16	8" 1/8 HB	N: 531,564.00 E: 1,355,453.84
17	12" 1/16 HB	N: 531,665.91 E: 1,355,324.54
18	8" 1/32 HB	N: 531,643.44 E: 1,355,303.40
19	12" CAP	N: 534,311.12 E: 1,355,435.17
20	8" CAP	N: 534,451.23 E: 1,355,204.18
25	8" CAP	N: 530,200.91 E: 1,353,756.05
26	8" CAP	N: 530,747.51 E: 1,353,201.42
27	8" CAP	N: 531,712.65 E: 1,355,244.10
44	8" CAP	N: 534,164.84 E: 1,353,743.54

- NOTES:
- 3" PUBLIC WATER, SEWER, SIDEWALK AND UTILITY EASEMENT = 3" PUBLIC WSSU EMT. (ON MAIN ROADS)
  - 4" PUBLIC WATER, SEWER, SIDEWALK AND UTILITY EASEMENT = 4" WSSU EMT. (ON CUL-DE-SACS)
  - ALL SEWER HOUSE CONNECTIONS (SHCs) ARE 4" UNLESS LABELED OTHERWISE. SEE LEGEND SHEET 1.
  - ALL WATER HOUSE CONNECTIONS (WHCs) ARE 1/2" UNLESS LABELED OTHERWISE. SEE LEGEND SHEET 1.



PREPARED FOR:  
BEAZER HOMES CORP.  
8965 GUILFORD RD., SUITE 290  
COLUMBIA, MD 21046  
ATTN: BRIAN KNAUFF  
410-381-3222

DEPARTMENT OF PUBLIC WORKS  
HOWARD COUNTY, MARYLAND

*Steve Cam*  
CHIEF, BUREAU OF UTILITIES

DEPARTMENT OF PLANNING AND ZONING  
HOWARD COUNTY, MARYLAND

*Cheryl Edwards*  
CHIEF, DEVELOPMENT ENGINEERING DIVISION

12-6-13

GLWGUTSCHICK LITTLE & WEBER, P.A.  
CIVIL ENGINEERS, LAND SURVEYORS, LAND PLANNERS, LANDSCAPE ARCHITECTS  
3909 NATIONAL DRIVE - SUITE 250 - BURTONTOWN OFFICE-PARK  
BURTONTOWN, MARYLAND 20866  
TEL: 301-421-4024 BALT: 410-880-1830 DC/VA: 301-989-2524 FAX: 301-421-4186

DATE OCT., 2013

G.L.W. No. 08052

PROFESSIONAL CERTIFICATION  
I HEREBY CERTIFY THAT THESE PLANS WERE PREPARED OR APPROVED BY ME, AND THAT I AM A DULY LICENSED PROFESSIONAL ENGINEER UNDER THE LAWS OF THE STATE OF MARYLAND, LICENSE NO. 12975  
EXP. DATE: MAY 26, 2014

*AS BUILT*  
DATE: 10-31-14

BY NO. 34

REVISION: Add 1" WHC For service to Open space

DATE: 9/27/14

WATER and SEWER EXTENSION PLAN

60' SCALE MAP NO. 47 BLOCK NO. 2,3,8&9 ZONING: R-ED

WINCOPIA FARMS PHASE I  
LOTS 1 THRU 220 & OPEN SPACE LOTS 221 THRU 256  
11388 E. 731 HOWARD COUNTY, MARYLAND ELECTION DISTRICT No. 6  
CONTRACT No. 24-4691-D

SCALE 1"=50'  
SHEET 2 OF 7



ASBUILT UTILITY LOCATION CHART- LOT 194

FROM	TO	DISTANCE
1 1/2" W/C	MH62	21.00'
1 1/2" W/C	SHC LOT 194	31.00'
4" S/C	MH60	15.00'
4" S/C	MH60	35.00'

ASBUILT UTILITY LOCATION CHART- LOT 2

FROM	TO	DISTANCE
1 1/2" W/C	MH58	23.00'
1 1/2" W/C	MH57	48.00'
4" S/C	MH57	29.00'
4" S/C	MH58	33.30'

ASBUILT UTILITY LOCATION CHART- FUTURE LOT 9

FROM	TO	DISTANCE
1 1/2" W/C	MH112	51.50'
1 1/2" W/C	W/C LOT 12	22.00'
4" S/C	MH66	65.40'
4" S/C	SHC LOT 4	74.00'
4" S/C	SHC LOT 10	84.00'

ASBUILT UTILITY LOCATION CHART- LOT 195

FROM	TO	DISTANCE
1 1/2" W/C	MH60	85.00'
1 1/2" W/C	SHC LOT 195	31.00'
4" S/C	W/C LOT 195	28.00'
4" S/C	MH60	61.00'

ASBUILT UTILITY LOCATION CHART- LOT 3

FROM	TO	DISTANCE
1 1/2" W/C	MH57	10.00'
1 1/2" W/C	SHC LOT 3	8.60'
4" S/C	MH58	72.40'
4" S/C	MH57	70.00'

ASBUILT UTILITY LOCATION CHART- FUTURE LOT 10

FROM	TO	DISTANCE
1 1/2" W/C	MH112	100.40'
1 1/2" W/C	W/C LOT 11	13.50'
4" S/C	MH54	98.00'
4" S/C	SHC LOT 4	24.00'

ASBUILT UTILITY LOCATION CHART- LOT 196

FROM	TO	DISTANCE
1 1/2" W/C	F.H. LOCH LESS LANE	42.00'
1 1/2" W/C	W/C LOT 216	51.00'
4" S/C	W/C LOT 196	40.00'
4" S/C	W/C LOT 216	66.00'

ASBUILT UTILITY LOCATION CHART- LOT 4

FROM	TO	DISTANCE
1 1/2" W/C	MH57	35.00'
1 1/2" W/C	W/C LOT 5	44.00'
4" S/C	MH57	52.00'
4" S/C	SHC LOT 10	24.00'

ASBUILT UTILITY LOCATION CHART- FUTURE LOT 11

FROM	TO	DISTANCE
1 1/2" W/C	W/C LOT 12	68.50'
1 1/2" W/C	W/C LOT 9	57.50'
4" S/C	MH112	101.40'
4" S/C	MH53	28.00'

ASBUILT UTILITY LOCATION CHART- LOT 204

FROM	TO	DISTANCE
1 1/2" W/C	MH61	66.00'
1 1/2" W/C	W/C LOT 204	54.00'
4" S/C	W/C LOT 204	40.00'
4" S/C	W/C LOT 224	37.00'

ASBUILT UTILITY LOCATION CHART- LOT 5

FROM	TO	DISTANCE
1 1/2" W/C	MH57	10.00'
1 1/2" W/C	W/C LOT 5	33.00'
4" S/C	MH57	52.00'
4" S/C	SHC LOT 10	24.00'

ASBUILT UTILITY LOCATION CHART- FUTURE LOT 12

FROM	TO	DISTANCE
1 1/2" W/C	MH112	45.50'
1 1/2" W/C	W/C LOT 9	22.00'
4" S/C	MH112	11.00'
4" S/C	W/C LOT 12	32.00'

ASBUILT UTILITY LOCATION CHART- LOT 205

FROM	TO	DISTANCE
1 1/2" W/C	MH61	80.00'
1 1/2" W/C	E. FIRE HYDRANT	15.00'
4" S/C	MH61	36.00'
4" S/C	W/C LOT 205	66.00'

ASBUILT UTILITY LOCATION CHART- FUTURE LOT 6

FROM	TO	DISTANCE
1 1/2" W/C	E. MH 1-9T	41.00'
1 1/2" W/C	E. MH 1-9B	60.00'
4" S/C	MH56	58.00'
4" S/C	MH56	89.00'

ASBUILT UTILITY LOCATION CHART- FUTURE LOT 7

FROM	TO	DISTANCE
1 1/2" W/C	B VALVE (SIENNA WAY)	75.00'
1 1/2" W/C	W/C LOT 8	49.50'
4" S/C	MH56	68.00'
4" S/C	SHC LOT 8	61.00'

ASBUILT UTILITY LOCATION CHART- LOT 1

FROM	TO	DISTANCE
1 1/2" W/C	MH59	64.50'
1 1/2" W/C	SHC LOT 1	9.30'
4" S/C	MH59	74.50'
4" S/C	MH58	54.00'

ASBUILT UTILITY LOCATION CHART- FUTURE LOT 8

FROM	TO	DISTANCE
1 1/2" W/C	B VALVE (SIENNA WAY)	38.00'
1 1/2" W/C	MH81	26.00'
4" S/C	MH56	65.40'
4" S/C	MH112	49.00'

ASBUILT UTILITY LOCATION CHART- LOT 2

FROM	TO	DISTANCE
1 1/2" W/C	MH59	41.50'
1 1/2" W/C	SHC LOT 2	10.00'
4" S/C	MH59	74.50'
4" S/C	MH58	54.00'

ASBUILT UTILITY LOCATION CHART- FUTURE LOT 9

FROM	TO	DISTANCE
1 1/2" W/C	B VALVE (SIENNA WAY)	75.00'
1 1/2" W/C	W/C LOT 8	49.50'
4" S/C	MH56	68.00'
4" S/C	SHC LOT 8	61.00'

ASBUILT UTILITY LOCATION CHART- LOT 3

FROM	TO	DISTANCE
1 1/2" W/C	MH59	41.50'
1 1/2" W/C	SHC LOT 3	10.00'
4" S/C	MH59	74.50'
4" S/C	MH58	54.00'

ASBUILT UTILITY LOCATION CHART- FUTURE LOT 10

FROM	TO	DISTANCE
1 1/2" W/C	B VALVE (SIENNA WAY)	38.00'
1 1/2" W/C	MH81	26.00'
4" S/C	MH56	65.40'
4" S/C	MH112	49.00'

ASBUILT UTILITY LOCATION CHART- LOT 4

FROM	TO	DISTANCE
1 1/2" W/C	MH59	41.50'
1 1/2" W/C	SHC LOT 4	10.00'
4" S/C	MH59	74.50'
4" S/C	MH58	54.00'

ASBUILT UTILITY LOCATION CHART- FUTURE LOT 11

FROM	TO	DISTANCE
1 1/2" W/C	B VALVE (SIENNA WAY)	38.00'
1 1/2" W/C	MH81	26.00'
4" S/C	MH56	65.40'
4" S/C	MH112	49.00'

ASBUILT UTILITY LOCATION CHART- LOT 5

FROM	TO	DISTANCE
1 1/2" W/C	MH59	41.50'
1 1/2" W/C	SHC LOT 5	10.00'
4" S/C	MH59	74.50'
4" S/C	MH58	54.00'

ASBUILT UTILITY LOCATION CHART- FUTURE LOT 12

FROM	TO	DISTANCE
1 1/2" W/C	B VALVE (SIENNA WAY)	38.00'
1 1/2" W/C	MH81	26.00'
4" S/C	MH56	65.40'
4" S/C	MH112	49.00'

ASBUILT UTILITY LOCATION CHART- LOT 6

FROM	TO	DISTANCE
1 1/2" W/C	MH59	41.50'
1 1/2" W/C	SHC LOT 6	10.00'
4" S/C	MH59	74.50'
4" S/C	MH58	54.00'

ASBUILT UTILITY LOCATION CHART- FUTURE LOT 13

FROM	TO	DISTANCE
1 1/2" W/C	B VALVE (SIENNA WAY)	38.00'
1 1/2" W/C	MH81	26.00'
4" S/C	MH56	65.40'
4" S/C	MH112	49.00'

ASBUILT UTILITY LOCATION CHART- LOT 7

FROM	TO	DISTANCE
1 1/2" W/C	MH59	41.50'
1 1/2" W/C	SHC LOT 7	10.00'
4" S/C	MH59	74.50'
4" S/C	MH58	54.00'

ASBUILT UTILITY LOCATION CHART- FUTURE LOT 14

FROM	TO	DISTANCE
1 1/2" W/C	B VALVE (SIENNA WAY)	38.00'
1 1/2" W/C	MH81	26.00'
4" S/C	MH56	65.40'
4" S/C	MH112	49.00'

ASBUILT UTILITY LOCATION CHART- LOT 8

FROM	TO	DISTANCE
1 1/2" W/C	MH59	41.50'
1 1/2" W/C	SHC LOT 8	10.00'
4" S/C	MH59	74.50'
4" S/C	MH58	54.00'

ASBUILT UTILITY LOCATION CHART- FUTURE LOT 15

FROM	TO	DISTANCE
1 1/2" W/C	B VALVE (SIENNA WAY)	38.00'
1 1/2" W/C	MH81	26.00'
4" S/C	MH56	65.40'
4" S/C	MH112	49.00'

ASBUILT UTILITY LOCATION CHART- LOT 9

FROM	TO	DISTANCE
1 1/2" W/C	MH59	41.50'
1 1/2" W/C	SHC LOT 9	10.00'
4" S/C	MH59	74.50'
4" S/C	MH58	54.00'

ASBUILT UTILITY LOCATION CHART- FUTURE LOT 16

FROM	TO	DISTANCE
1 1/2" W/C	B VALVE (SIENNA WAY)	38.00'
1 1/2" W/C	MH81	26.00'
4" S/C	MH56	65.40'
4" S/C	MH112	49.00'

ASBUILT UTILITY LOCATION CHART- LOT 10

FROM	TO	DISTANCE
1 1/2" W/C	MH59	41.50'
1 1/2" W/C	SHC LOT 10	10.00'
4" S/C	MH59	74.50'
4" S/C	MH58	54.00'

ASBUILT UTILITY LOCATION CHART- FUTURE LOT 17

FROM	TO	DISTANCE
1 1/2" W/C	B VALVE (SIENNA WAY)	38.00'
1 1/2" W/C	MH81	26.00'
4" S/C	MH56	65.40'
4" S/C	MH112	49.00'

ASBUILT UTILITY LOCATION CHART- LOT 11

FROM	TO	DISTANCE
1 1/2" W/C	MH59	41.50'
1 1/2" W/C	SHC LOT 11	10.00'
4" S/C	MH59	74.50'
4" S/C	MH58	54.00'

ASBUILT UTILITY LOCATION CHART- FUTURE LOT 18

FROM	TO	DISTANCE
1 1/2" W/C	B VALVE (SIENNA WAY)	38.00'
1 1/2" W/C	MH81	26.00'
4" S/C	MH56	65.40'
4" S/C	MH112	49.00'

ASBUILT UTILITY LOCATION CHART- LOT 12

FROM	TO	DISTANCE
1 1/2" W/C	MH59	41.50'
1 1/2" W/C	SHC LOT 12	10.00'
4" S/C	MH59	74.50'
4" S/C	MH58	54.00'

ASBUILT UTILITY LOCATION CHART- FUTURE LOT 19

FROM	TO	DISTANCE
1 1/2" W/C	B VALVE (SIENNA WAY)	38.00'
1 1/2" W/C	MH81	26.00'
4" S/C	MH56	65.40'
4" S/C	MH112	49.00'

ASBUILT UTILITY LOCATION CHART- LOT 13

FROM	TO	DISTANCE
1 1/2" W/C	MH59	41.50'
1 1/2" W/C	SHC LOT 13	10.00'
4" S/C	MH59	74.50'
4" S/C	MH58	54.00'

ASBUILT UTILITY LOCATION CHART- FUTURE LOT 20

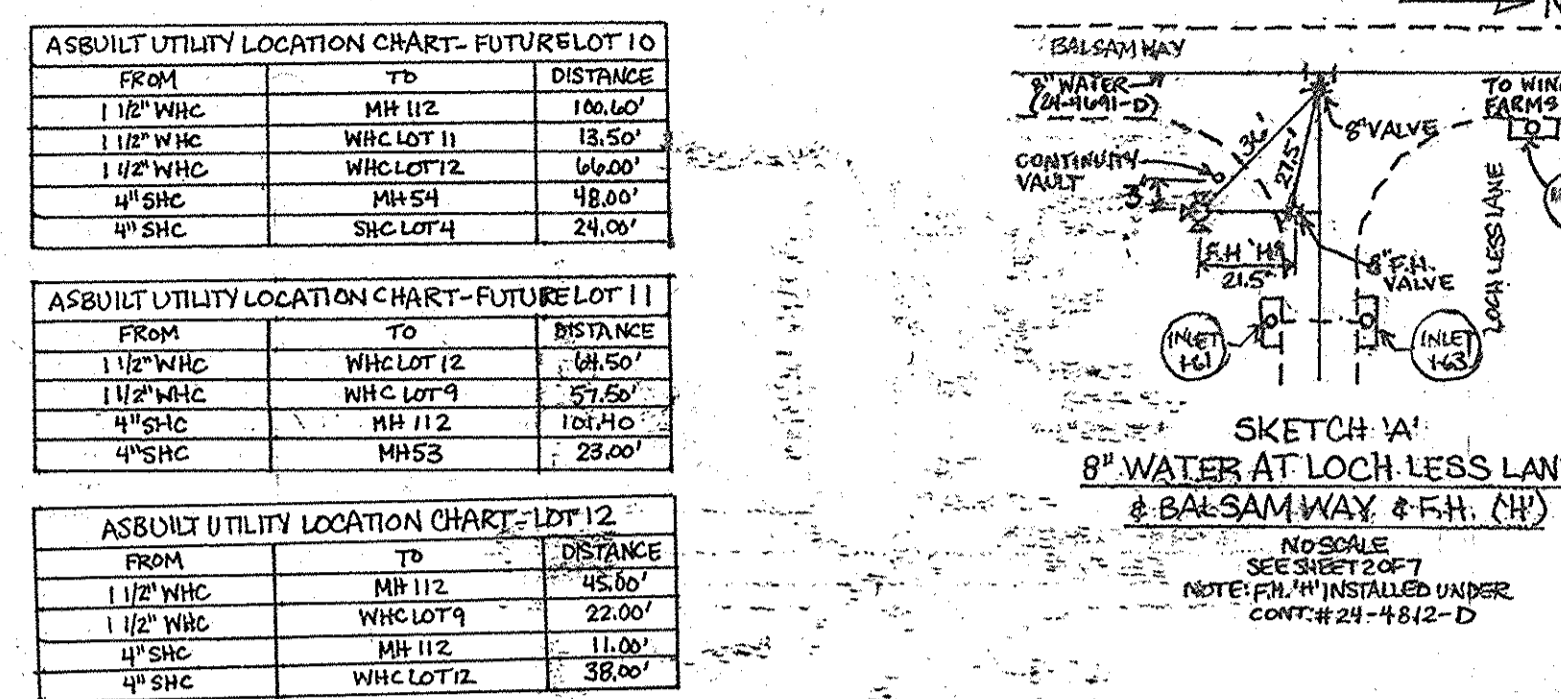
FROM	TO	DISTANCE
1 1/2" W/C	B VALVE (SIENNA WAY)	38.00'
1 1/2" W/C	MH81	26.00'
4" S/C	MH56	65.40'
4" S/C	MH112	49.00'

ASBUILT UTILITY LOCATION CHART- LOT 14

FROM	TO	DISTANCE
1 1/2" W/C	MH59	41.50'
1 1/2" W/C	SHC LOT 14	10.00'
4" S/C	MH59	74.50'
4" S/C	MH58	54.00'

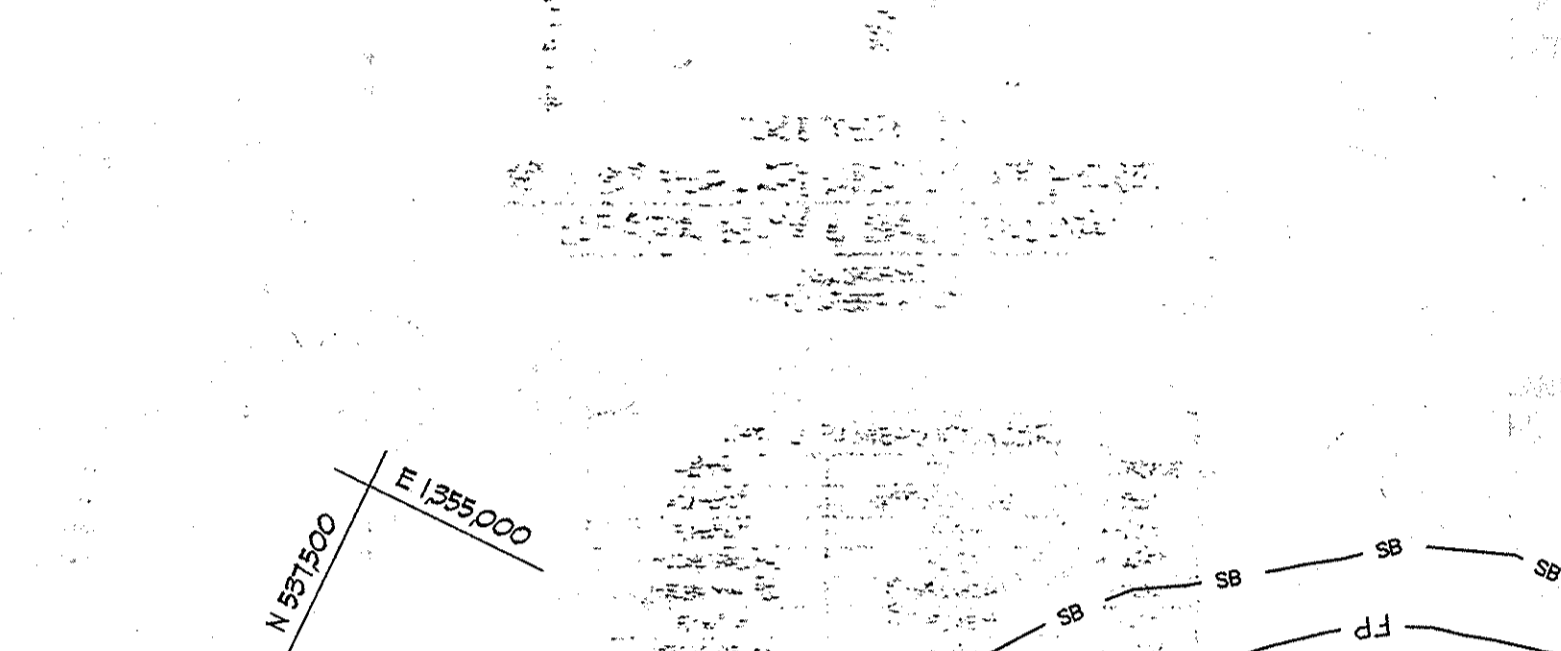
ASBUILT UTILITY LOCATION CHART- FUTURE LOT 21

FROM	TO	DISTANCE
1 1/2" W/C	B VALVE (SIENNA WAY)	38.00'
1 1/2" W/C	MH81	26.00'
4" S/C	MH56	65.40'
4" S/C	MH112	49.00'



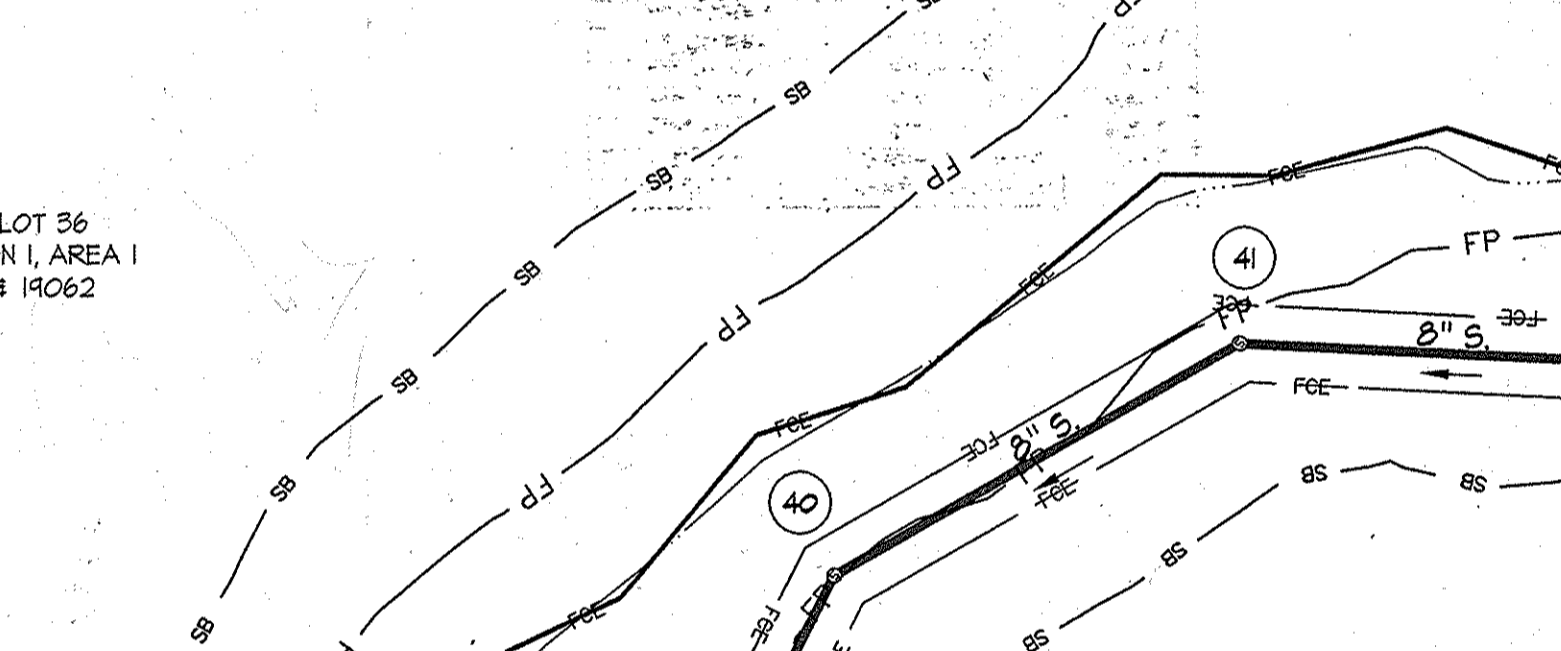
SKETCH 'A' MEASUREMENTS

FROM	TO	DISTANCE
B VALVE	I-13 MANHOLE	43.50'
B VALVE	I-13 MANHOLE	31.50'
B VALVE	WATER VALVE	21.50'
F.H.	B VALVE	30.00'
F.H.	CONTINUITY VAULT	3.00'



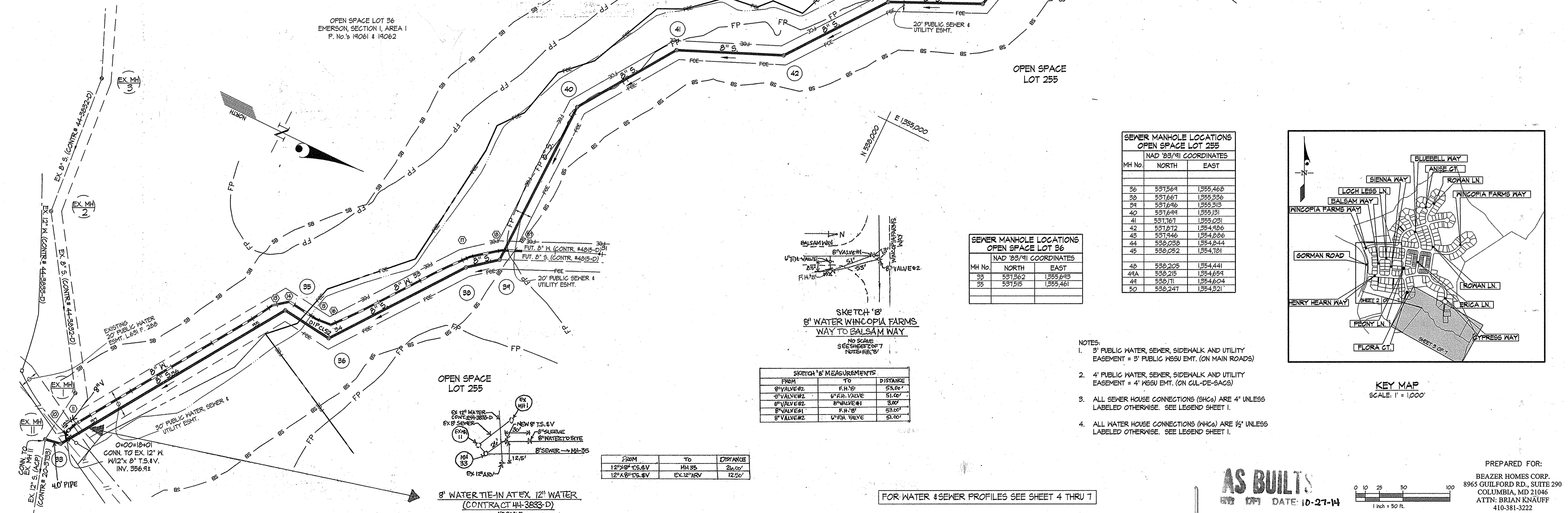
SKETCH 'B' MEASUREMENTS

FROM	TO	DISTANCE
B VALVE#1	F.H.#1	53.00'
B VALVE#2	F.H.#2	51.00'

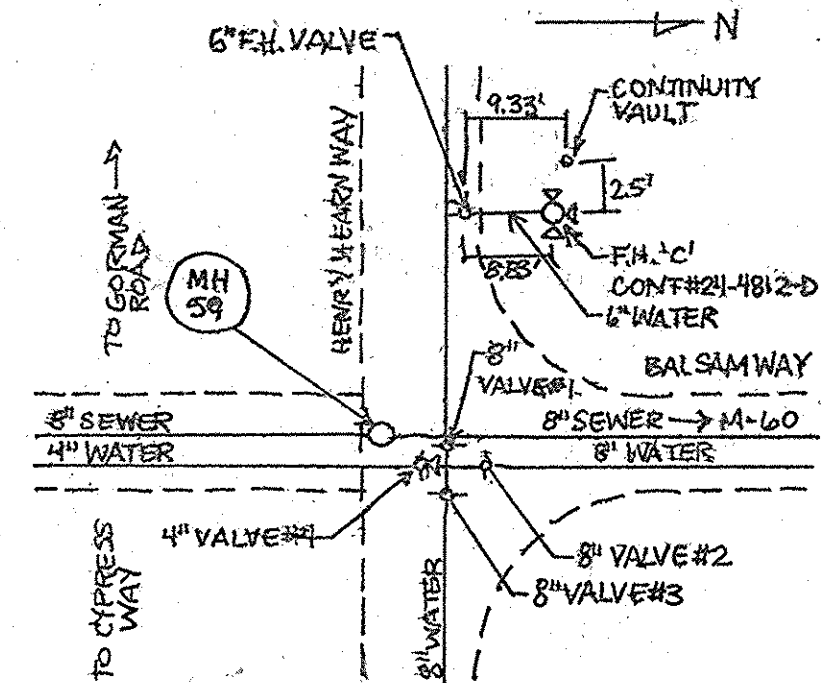
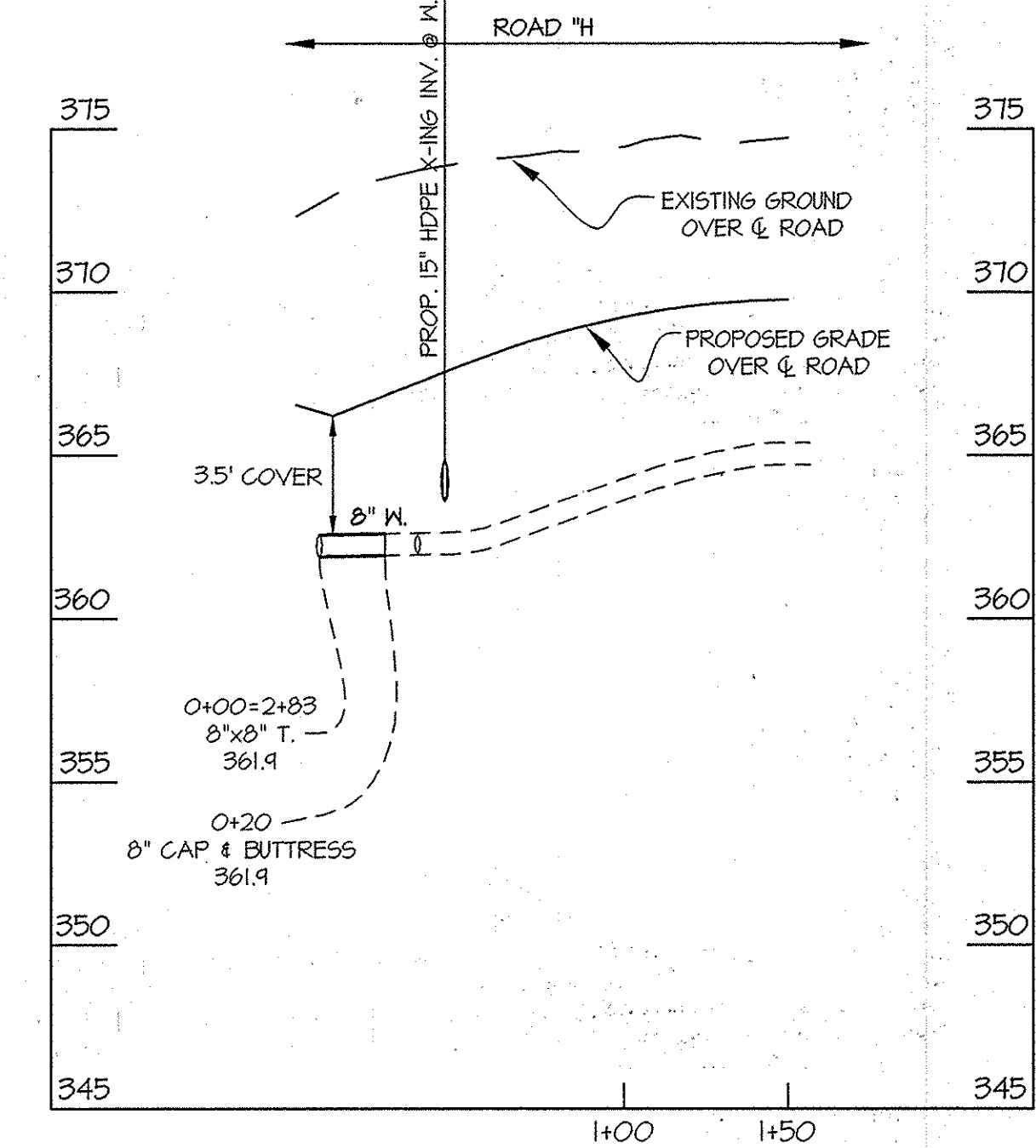
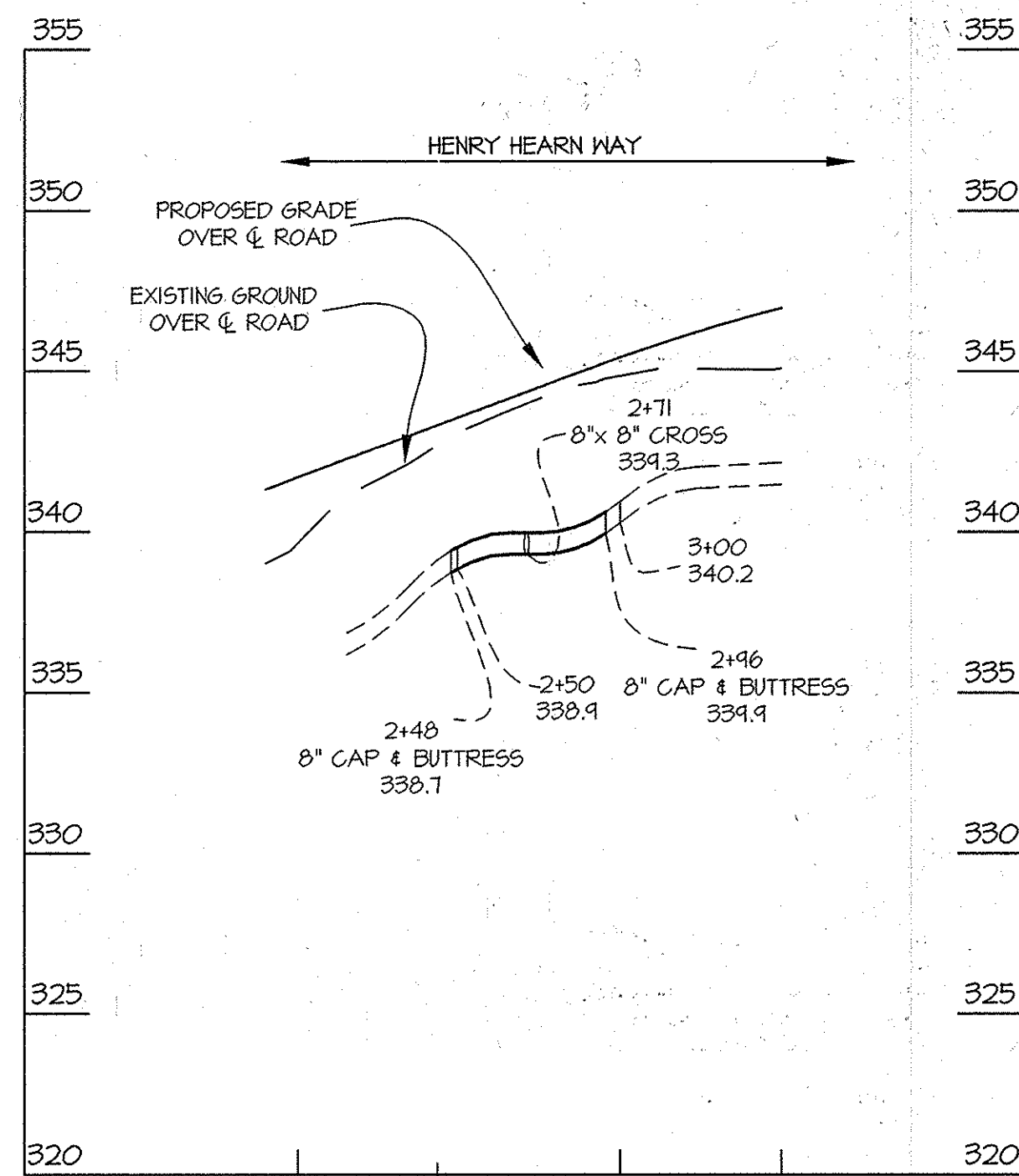


SKETCH 'C' MEASUREMENTS

FROM	TO	DISTANCE
12" x 8" T.S. & V.	MH33	26.00'
12" x 8" T.S. & V.	EX. 12" W/V	12.50'

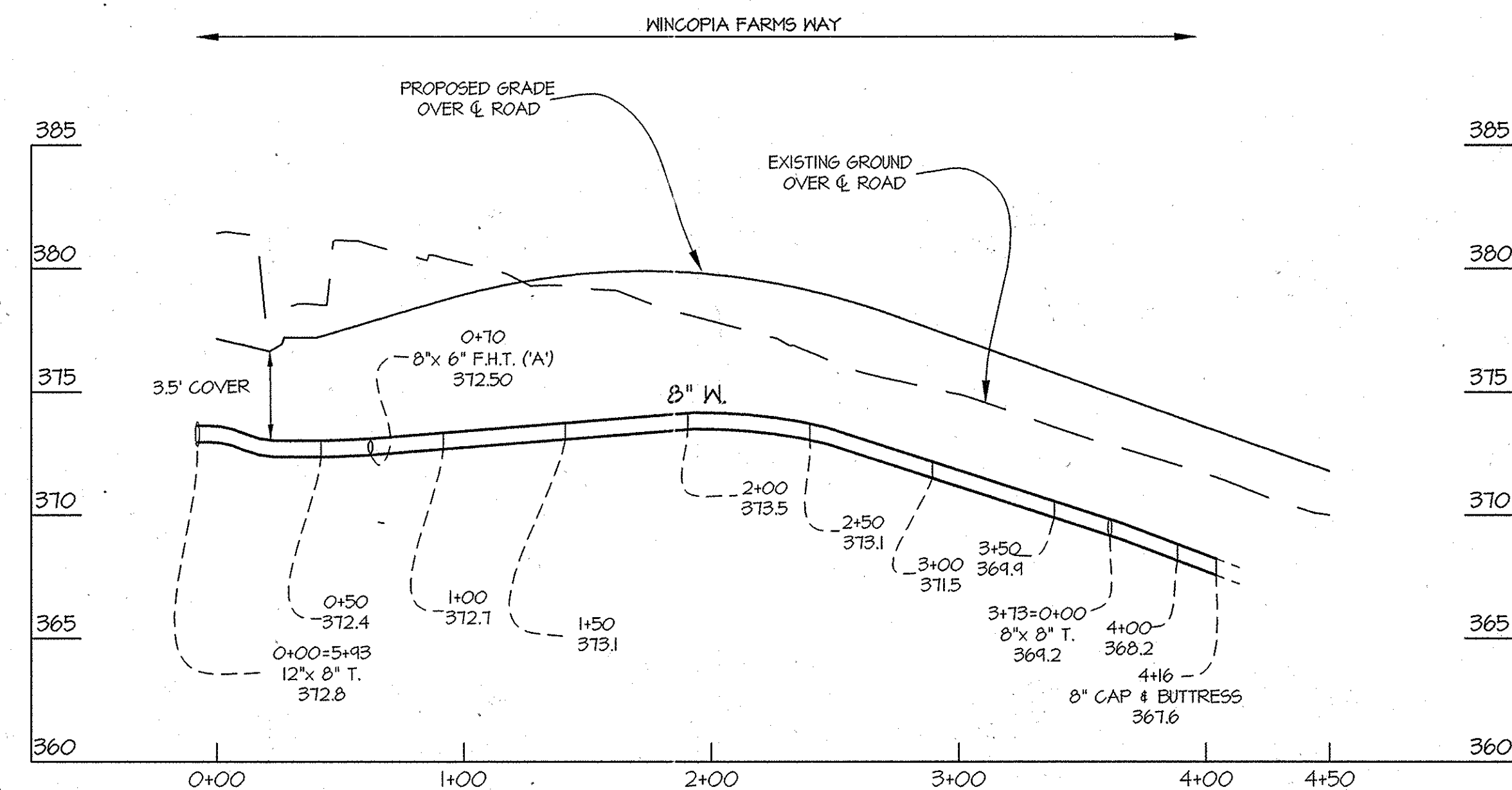
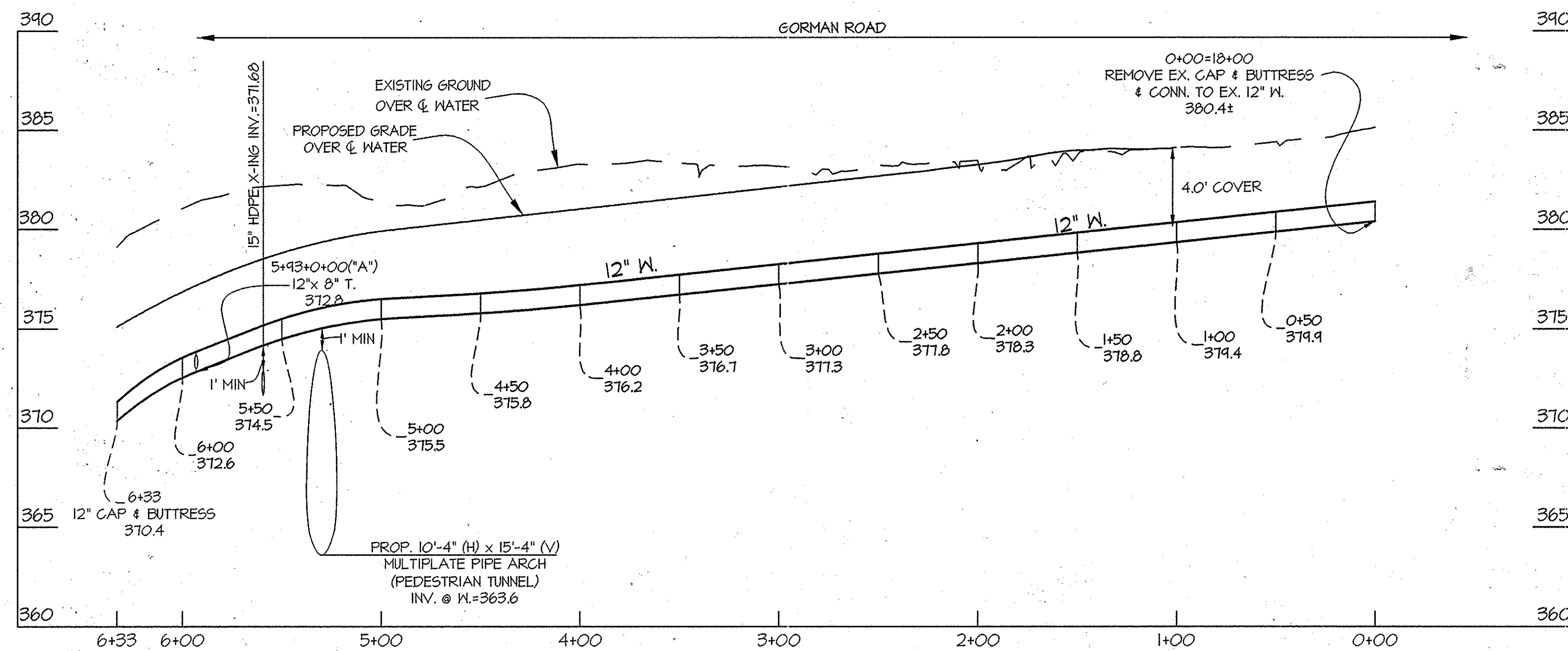






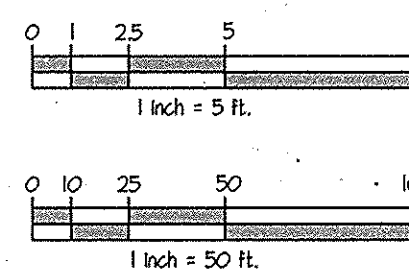
SKETCH 'C'  
8" X 8" WATER CROSS AT HENRY  
HEARN WAY & BALSAM WAY  
NO. SCALE  
SEE SHEET 2 OF 7

FROM	TO	DISTANCE
F.H.'C	6" VALVE	8.85'
F.H.'C	M-59	46.50'
6" VALVE	M-59	42.50'
6" VALVE	8" VALVE #1	47.00'
F.H.'C	8" VALVE #1	48.5'
4" VALVE #4	M-59	15.00'
4" VALVE #4	8" VALVE #1	4.50'
4" VALVE #4	8" VALVE #3	4.50'
8" VALVE #1	8" VALVE #2	3.00'
8" VALVE #2	8" VALVE #5	3.50'
8" VALVE #5	8" VALVE #1	4.50'
8" VALVE #2	4" VALVE #4	6.50'
F.H.'C	CONTINUITY VAULT	2.50'
6" VALVE	CONTINUITY VAULT	9.33'



FOR WATER & SEWER PLAN VIEW SEE SHEETS 2 & 3

PROFILE SCALES:  
HOR. 1" = 50'  
VERT. 1" = 5'



**AS BUILT**  
6/21/13 10:27:14

PREPARED FOR:  
BEAZER HOMES CORP.  
8965 GUILFORD RD., SUITE 290  
COLUMBIA, MD 21046  
ATTN: BRIAN KNAUFF  
410-381-3222

L:\CADD\BRUNNICKS\08050\SUB-WWS-SEW-P/W/1304\1304-01\08050-1304-01.dwg, PLOT: 10/28/2013 3:08 PM, LAST SAVED: 10/28/2013 3:05 PM, PLOTTED BY: Don Swamy

DEPARTMENT OF PUBLIC WORKS  
HOWARD COUNTY, MARYLAND

*John C. Gann*  
CHIEF, BUREAU OF UTILITIES

DEPARTMENT OF PLANNING AND ZONING  
HOWARD COUNTY, MARYLAND

*Robert Edmund*  
CHIEF, DEVELOPMENT ENGINEERING DIVISION

DATE: 12-6-13

**GLW** GUTSCHICK LITTLE & WEBER, P.A.  
CIVIL ENGINEERS, LAND SURVEYORS, LAND PLANNERS, LANDSCAPE ARCHITECTS  
3909 NATIONAL DRIVE - SUITE 250 - BURTONSVILLE OFFICE PARK  
BURTONSVILLE, MARYLAND 20886  
TEL: 301-421-4024 BAL: 410-880-1820 DC/VA: 301-889-2524 FAX: 301-421-4186

DATE: OCT., 2013

PROFESSIONAL CERTIFICATION  
I HEREBY CERTIFY THAT THESE PLANS WERE PREPARED OR APPROVED BY ME, AND THAT I AM A DULY LICENSED PROFESSIONAL ENGINEER UNDER THE LAWS OF THE STATE OF MARYLAND, LICENSE NO. 12975  
EXP. DATE: MAY 26, 2014



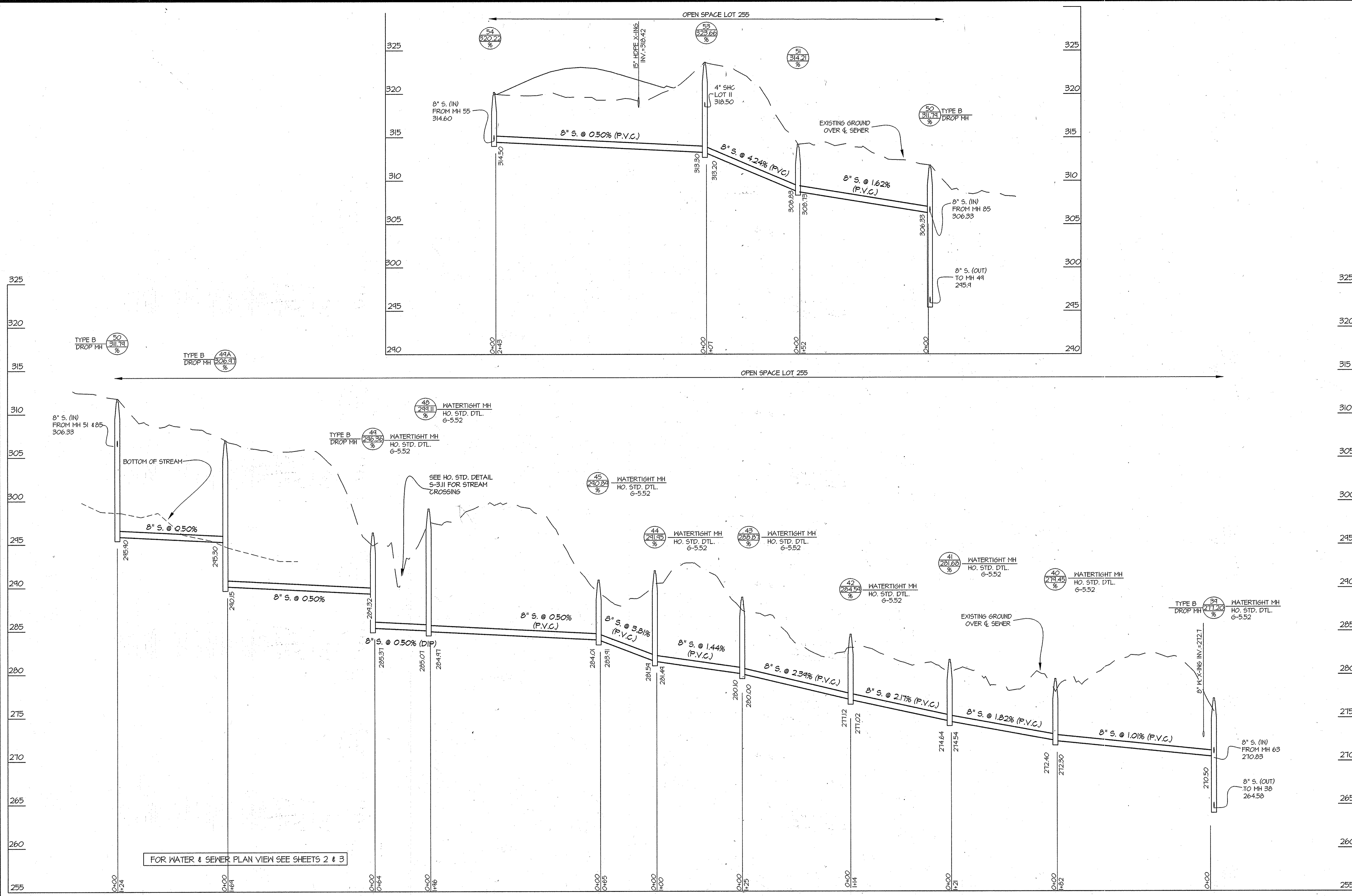
BY	NO.	REVISION	DATE

WATER and SEWER PROFILES

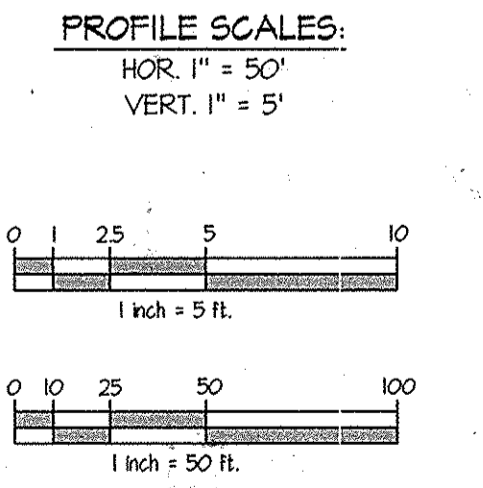
600' SCALE MAP NO. 47 BLOCK NO. 2,3,8&9

**WINCOPIA FARMS**  
PHASE 1  
LOTS 1 THRU 220 &  
OPEN SPACE LOTS 221 THRU 256  
L-11385 F-725  
HOWARD COUNTY, MARYLAND  
ELECTION DISTRICT No. 6  
CONTRACT No. 24-4691-D

SCALE AS SHOWN  
SHEET 4 OF 7



**AS BUILTS**  
BY: DFI DATE: 10-21-11

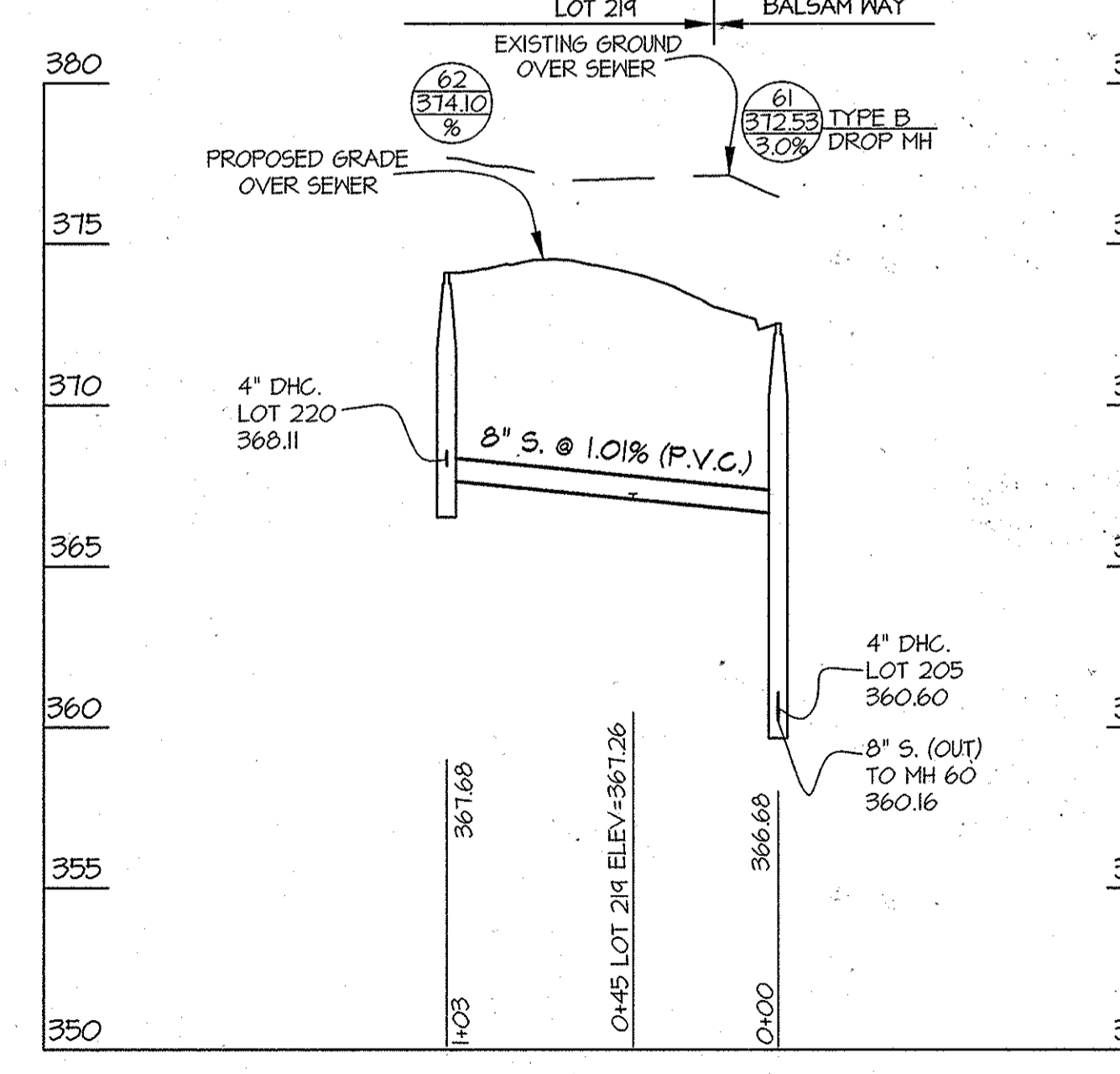
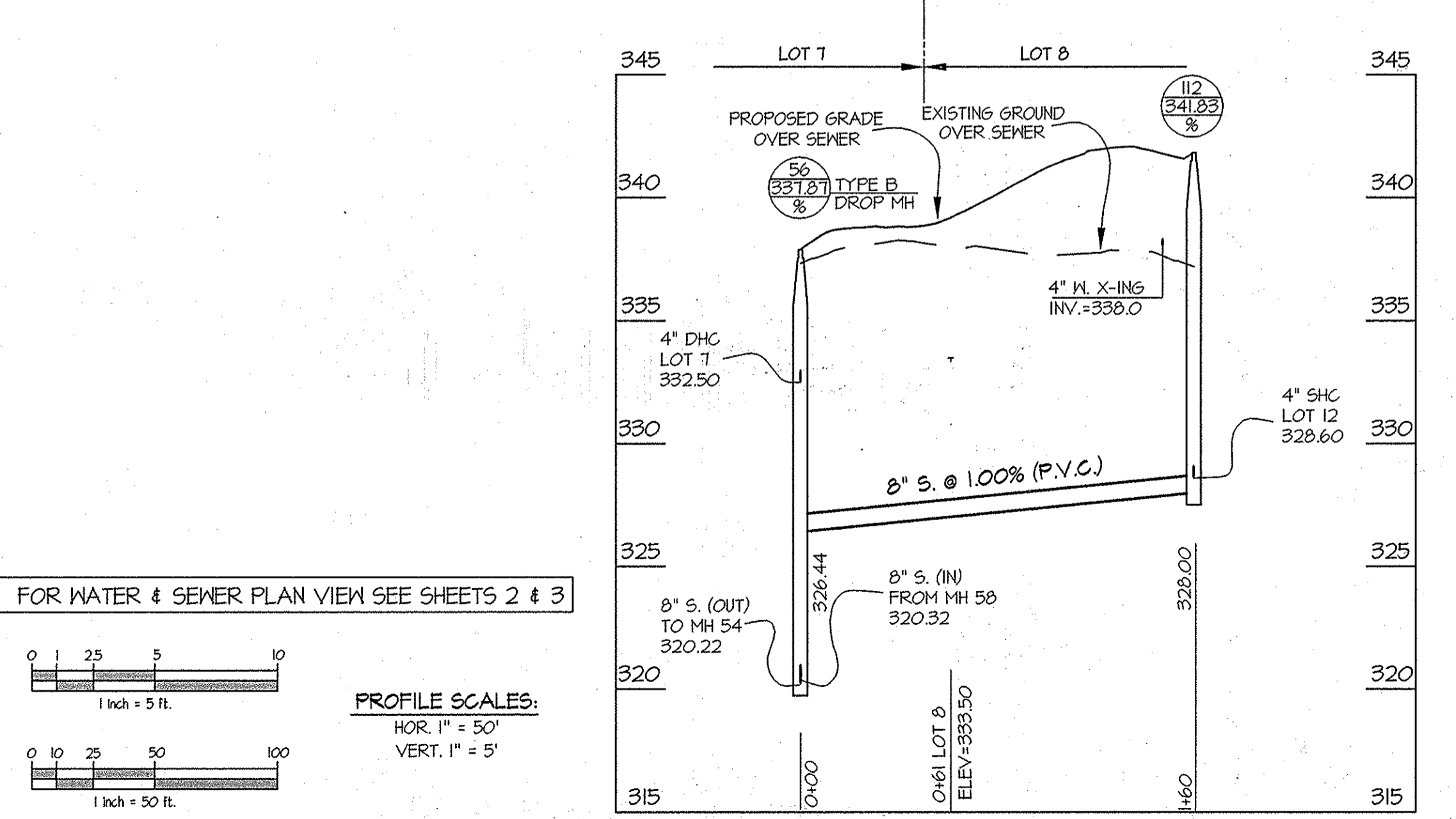
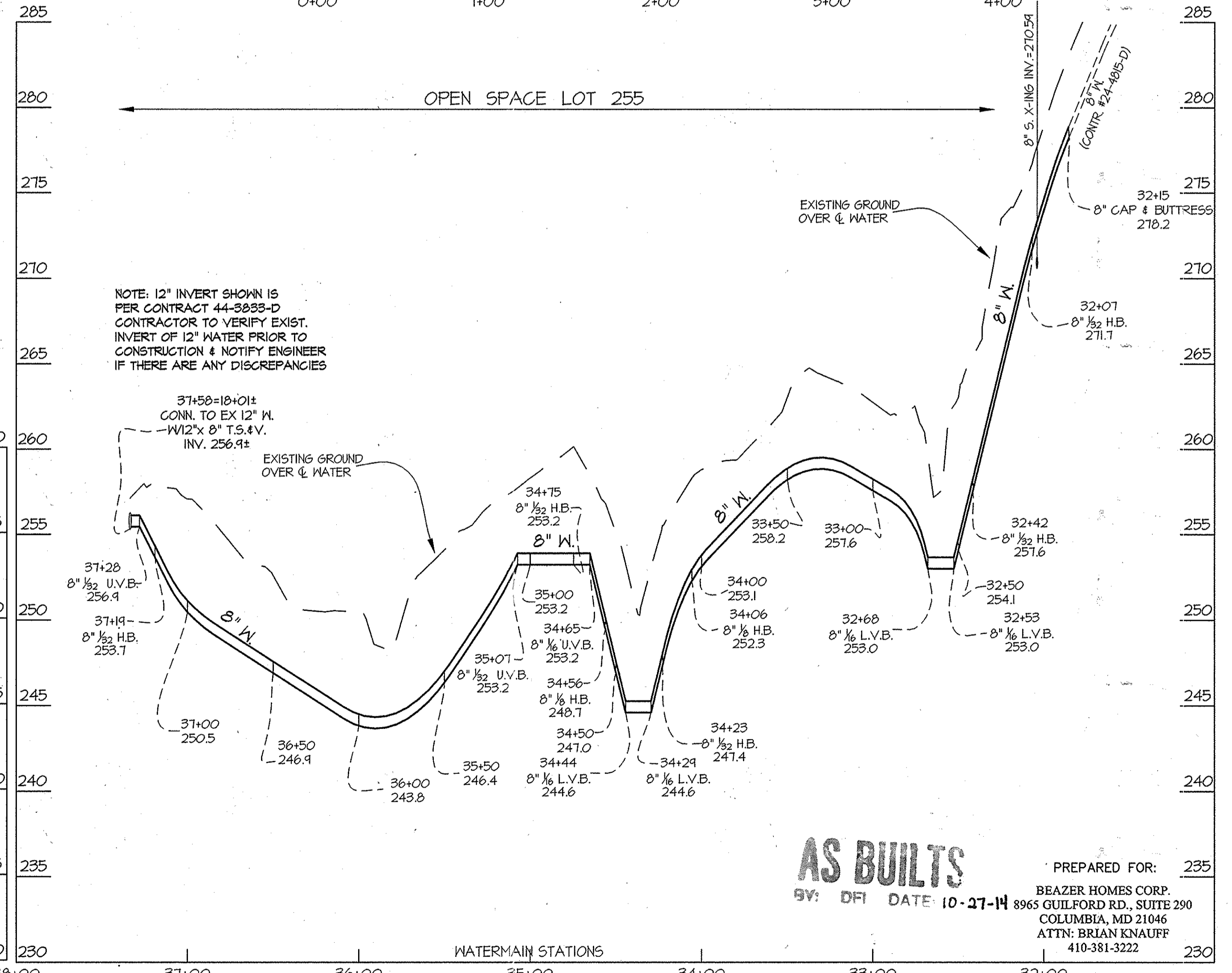
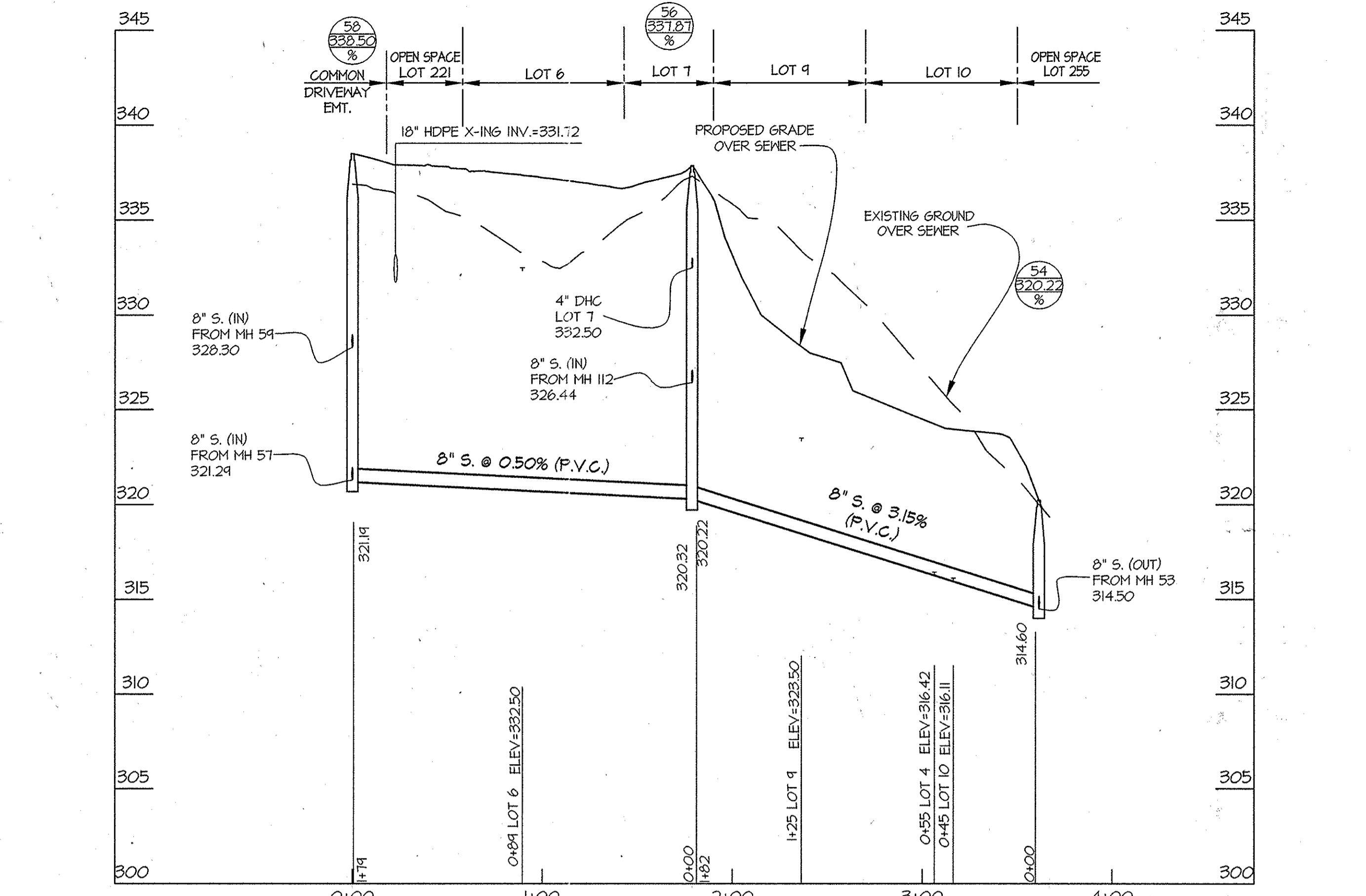
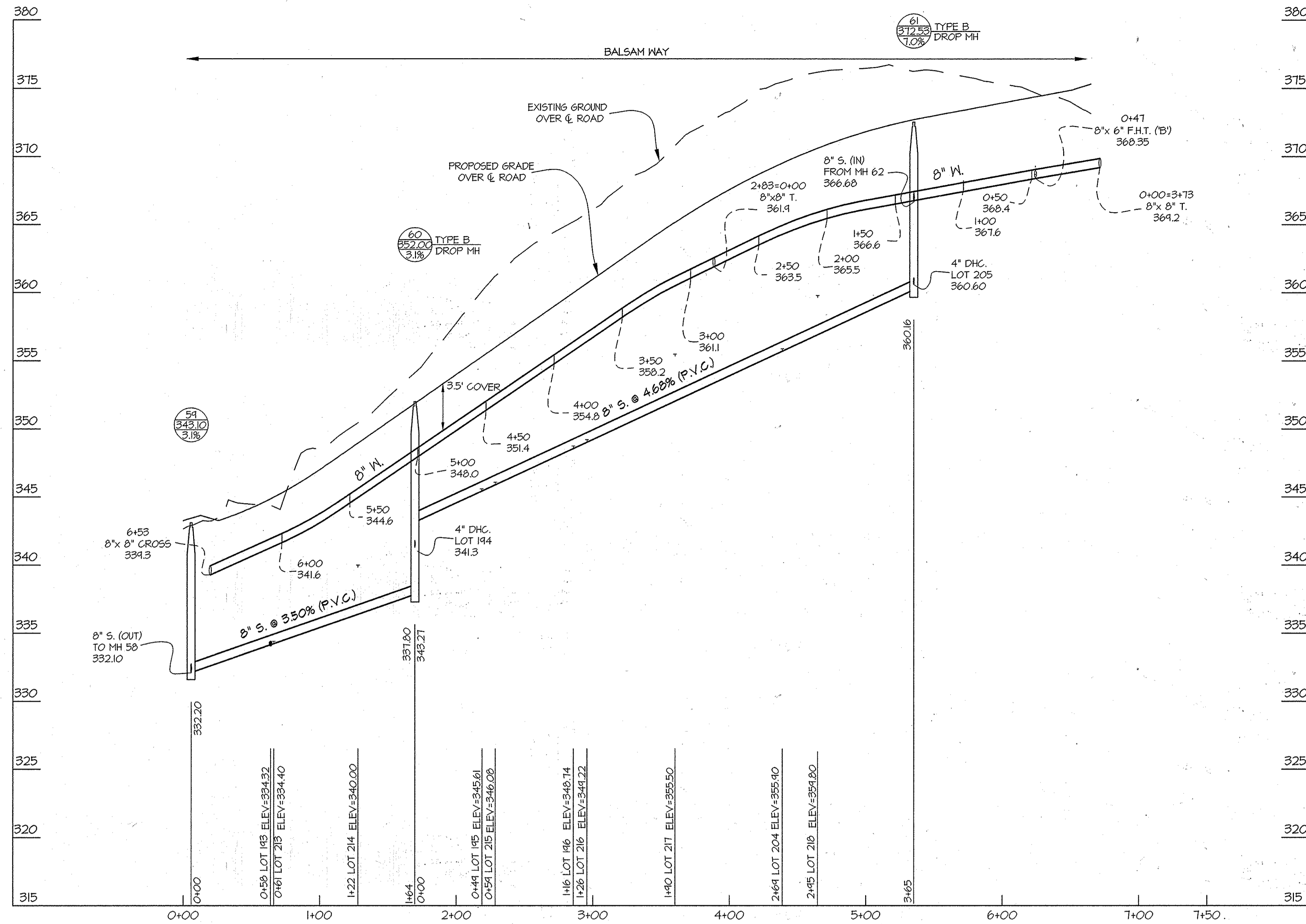


PREPARED FOR:  
BEAZER HOMES CORP.  
8965 GUILFORD RD., SUITE 290  
COLUMBIA, MD 21046  
ATTN: BRIAN KNAUFF  
410-381-3222

L:\CADD\PROJECTS\08052\08052-PUB-WWT-SEWER\PHASE 1\CONTRACT-24-4691-D\08052-PHS-4-7.dwg  
 PLOTTED: 11/14/2013 4:30 PM, LAST SAVED: 11/14/2013 4:28 PM, PLOTTED BY: Don Sheehy

DEPARTMENT OF PUBLIC WORKS HOWARD COUNTY, MARYLAND 	DEPARTMENT OF PLANNING AND ZONING HOWARD COUNTY, MARYLAND 	<b>GLW</b> GUTSCHICK LITTLE & WEBER, P.A. CIVIL ENGINEERS, LAND SURVEYORS, LAND PLANNERS, LANDSCAPE ARCHITECTS 3909 NATIONAL DRIVE - SUITE 250 - BURTNSVILLE OFFICE PARK BURTNSVILLE, MARYLAND 21046 TEL: 301-421-4024 BALT: 410-880-1820 DC/VA: 301-989-2524 FAX: 301-421-4186	DATE OCT., 2013	PROFESSIONAL CERTIFICATION I HEREBY CERTIFY THAT THESE PLANS WERE PREPARED OR APPROVED BY ME, AND THAT I AM A DULY LICENSED PROFESSIONAL ENGINEER UNDER THE LAWS OF THE STATE OF MARYLAND. LICENSE NO. 12975 EXP. DATE: MAY 26, 2014 	NO. _____ REVISION _____ DATE _____	600' SCALE MAP NO. 47	BLOCK NO. 2,3,8&9	ZONING: R-ED	<b>WINCOPIA FARMS</b> PHASE 1 LOTS 1 THRU 220 & OPEN SPACE LOTS 221 THRU 256 L. 11388 E 725 HOWARD COUNTY, MARYLAND ELECTION DISTRICT No. 6 CONTRACT No. 24-4691-D	SCALE AS SHOWN
			G.L.W. No. 08052							SHEET 5 OF 7





FOR WATER & SEWER PLAN VIEW SEE SHEETS 2 & 3

1 inch = 5 ft.

PROFILE SCALES:  
HOR. 1" = 50'  
VERT. 1" = 5'

DEPARTMENT OF PUBLIC WORKS HOWARD COUNTY, MARYLAND Chief, Bureau of Utilities	DEPARTMENT OF PLANNING AND ZONING HOWARD COUNTY, MARYLAND Chief, Development Engineering Division	<b>GLW</b> GUTSCHICK LITTLE & WEBER, P.A. CIVIL ENGINEERS, LAND SURVEYORS, LAND PLANNERS, LANDSCAPE ARCHITECTS 3909 NATIONAL DRIVE - SUITE 250 - BURTNSVILLE OFFICE PARK BURTNSVILLE, MARYLAND 20886 TEL: 301-421-4024 BAL: 410-890-1820 DC/VA: 301-989-2524 FAX: 301-421-4185	DATE OCT., 2013	PROFESSIONAL CERTIFICATION I HEREBY CERTIFY THAT THESE PLANS WERE PREPARED OR APPROVED BY ME, AND THAT I AM A DULY LICENSED PROFESSIONAL ENGINEER UNDER THE LAWS OF THE STATE OF MARYLAND, LICENSE NO. 12975 EXP. DATE: MAY 26, 2014 11-12-13	STATE OF MARYLAND PROFESSIONAL ENGINEER	WATER and SEWER PROFILES	WINGOPIA FARMS PHASE I LOTS 1 THRU 220 & OPEN SPACE LOTS 221 THRU 256 L. 11388 E. 725 HOWARD COUNTY, MARYLAND ELECTION DISTRICT No. 6 CONTRACT No. 24-4691-D	SCALE AS SHOWN SHEET 6 OF 7
			G.L.W. No. 08052					

L:\CADD\PROJECTS\2013\24-4691-D\SEWER\PHASE I\CONTRACT-24-4691-D\08052-RHS-4-7.dwg, PLOTTED: 10/28/2013 2:56 PM, LAST SAVED: 10/28/2013 2:55 PM, PLOTTED BY: Dan Sheehy

