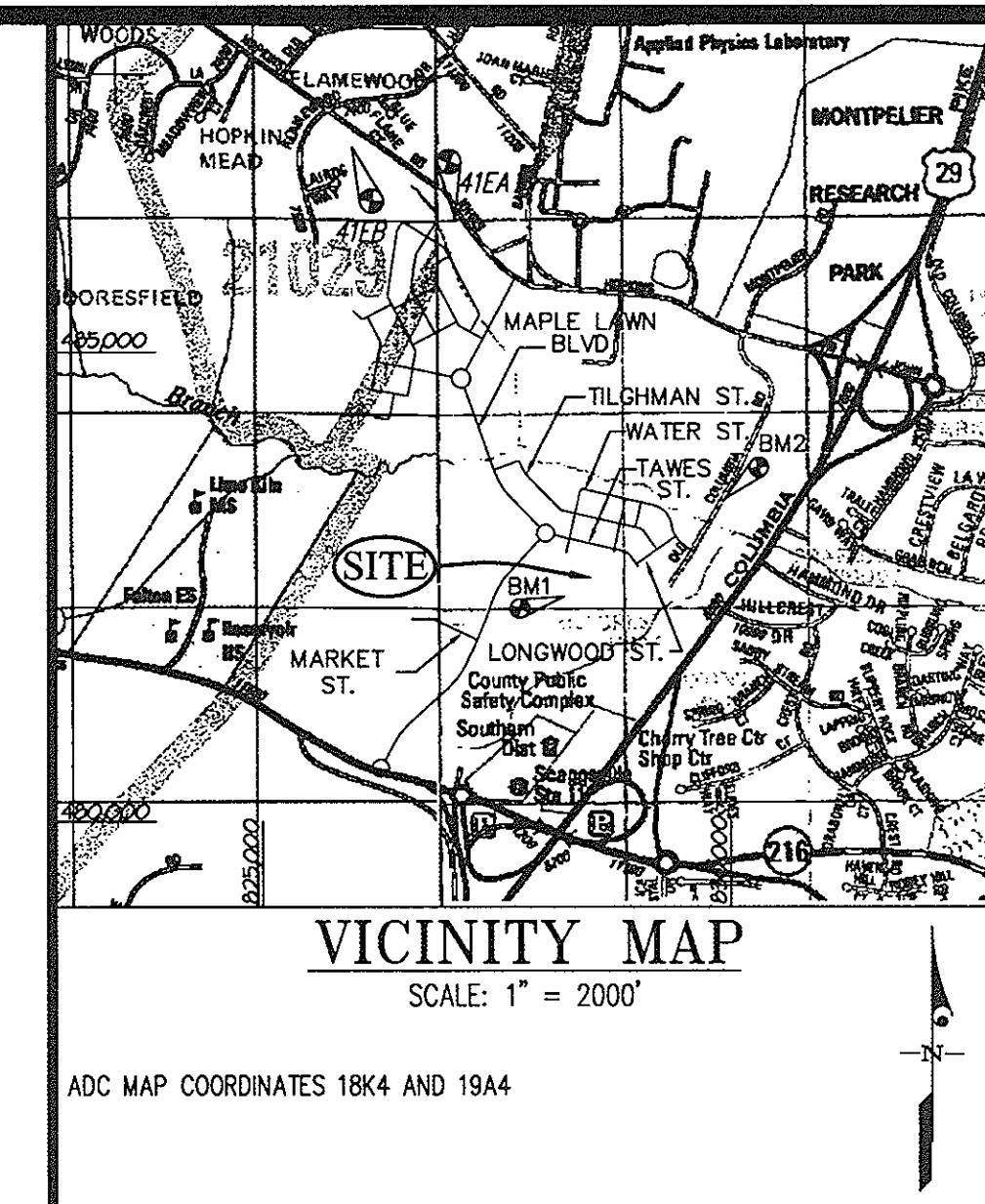
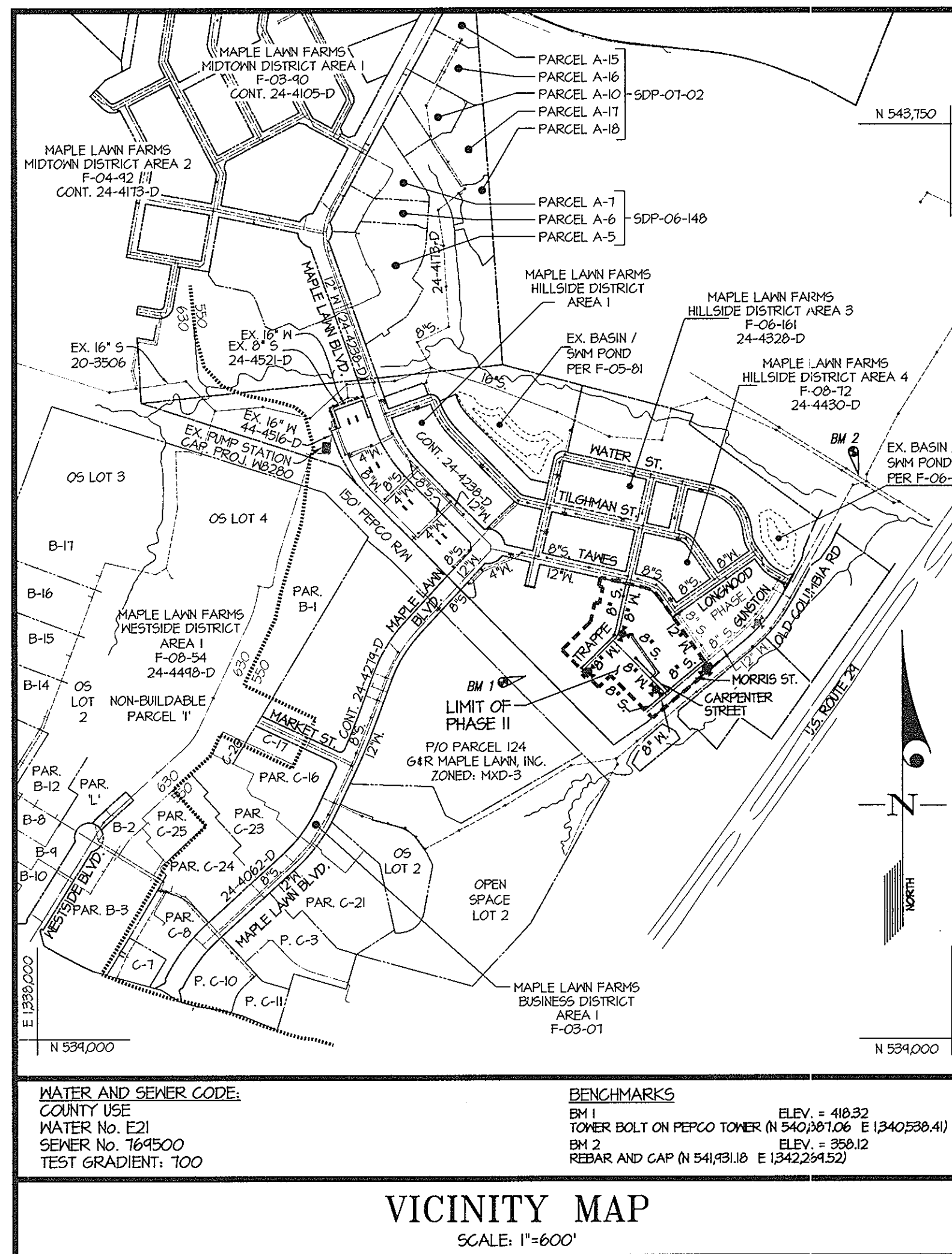


QUANTITIES				
ITEMS	QUANTITIES ESTIMATED	AS-BUILT		
		QUANTITIES	TYPE	MANUFACTURER/SUPPLIER
12" WATER MAIN	0 L.F.			
8" WATER MAIN	1303 L.F.	1370	CL 54	GRIFFIN PIPE
6" WATER MAIN	273 L.F.	263	CL 54	GRIFFIN PIPE
1-1/2" WATER (WHC)	740 L.F.	700	COOPER	HOWELL
12"x12" TEE	0 EA.			
12" VALVE	0 EA.			
12"x8" REDUCER	0 EA.			
12"x6" (FHT)	0 EA.			
8"x8" TEE	2 EA.	2 EA.	MJ	SIGMA
8"x6" TEE	1 EA.	1 EA.	MJ	SIGMA
8" VALVE	6 EA.	6 EA.	GATE	KENNEDY
8" 1/8" HB	0 EA.			
8" 1/16" HB	2 EA.	2 EA.	MJ	SIGMA
8" 1/32" HB	0 EA.			
8"x6" (FHT)	1 EA.	1 EA.	MJ	SIGMA
6" FIRE HYDRANT	1 EA.	1 EA.	CSO 2	KENNEDY
6" VALVE	1 EA.	2 EA.	MJ	KENNEDY
8" SEWER MAIN (P.V.C.)	1485 L.F.	1328	SDR-35	NORTH AMERICAN
8" SEWER MAIN (D.I.P.)	0 L.F.			
4" SEWER (SHC)	990 L.F.	969	SDR-35	NORTH AMERICAN
4" MANHOLES	7 EA.	8 EA.	PPE-CAST	FREDERICK PRECAST CONCRETE
6" 1/8" HB	1 EA.	1 EA.	MJ	SIGMA
6" 1/16" HB	1 EA.	1 EA.	MJ	SIGMA
6" 1/32" HB	1 EA.	1 EA.	MJ	SIGMA

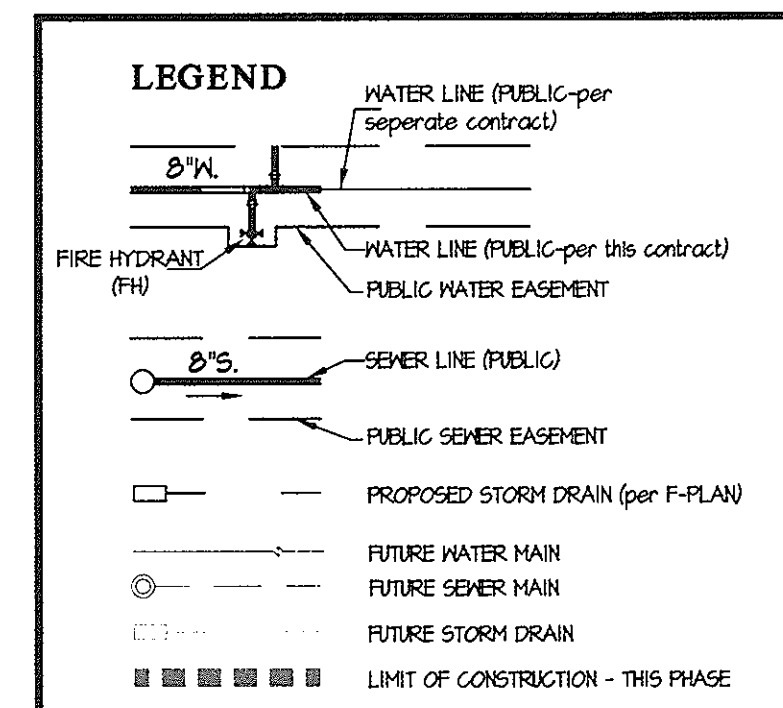
NAME OF UTILITY CONTRACTOR: GRAY & SON

SURVEY AND DRAFTING DIV. CHECKBOX: AS-BUILT DATE:



- GENERAL NOTES**
- APPROXIMATE LOCATIONS OF EXISTING MAINS ARE SHOWN. THE CONTRACTOR SHALL TAKE ALL NECESSARY PRECAUTIONS TO PROTECT EXISTING MAINS AND SERVICES AND MAINTAIN UNINTERRUPTED SERVICE. ANY DAMAGE INCURRED SHALL BE REPAIRED IMMEDIATELY TO THE SATISFACTION OF THE ENGINEER AT THE CONTRACTOR'S EXPENSE.
  - TOPOGRAPHIC FIELD SURVEYS WERE PERFORMED IN MAY 1991 BY 3DI.
  - HORIZONTAL AND VERTICAL SURVEY CONTROLS:
    - THE COORDINATES SHOWN ON THE DRAWINGS ARE BASED ON MARYLAND STATE REFERENCE SYSTEM NAD 83/91 AS PROJECTED BY HOWARD COUNTY GEODETIC CONTROL STATIONS NO. 41EA AND NO. 41EB.
    - ALL VERTICAL CONTROLS ARE BASED ON NAVD 88. VERTICAL CONTROLS PROVIDED ON DRAWINGS ARE STANDARD DIPS ON CONCRETE MONUMENTS.
  - ALL PIPE ELEVATIONS SHOWN ARE INVERT ELEVATIONS UNLESS OTHERWISE NOTED ON THE PLANS.
  - CLEAR ALL UTILITIES BY A MINIMUM OF 12 INCHES. CLEAR ALL POLES BY 5'-0" MINIMUM OR TUNNEL AS REQUIRED UNLESS OTHERWISE NOTED. THE OWNER HAS CONTACTED THE UTILITY COMPANIES AND HAS MADE ARRANGEMENTS FOR BRACING OF POLES AS SHOWN ON THE DRAWINGS. IN THE EVENT THE CONTRACTOR'S WORK REQUIRES BRACING OF ADDITIONAL POLES, ANY COST INCURRED BY THE OWNER FOR THE BRACING OF ADDITIONAL POLES OR DAMAGES SHALL BE DEDUCTED FROM MONIES OWED THE CONTRACTOR. THE CONTRACTOR SHALL COORDINATE WITH THE UTILITY COMPANIES TO SCHEDULE THE BRACING OF THE POLES.
  - FOR DETAILS NOT SHOWN ON THE DRAWINGS, AND FOR MATERIALS AND CONSTRUCTION METHODS, USE HOWARD COUNTY DESIGN MANUAL, VOLUME IV, STANDARD SPECIFICATIONS AND DETAILS FOR CONSTRUCTION (LATEST EDITION). THE CONTRACTOR SHALL HAVE A COPY OF VOLUME IV ON THE JOB.
  - WHERE TEST PITS HAVE BEEN MADE ON EXISTING UTILITIES, THEY ARE NOTED BY THE SYMBOL  $\oplus$  AT THE LOCATIONS OF THE TEST PITS. A NOTE OR NOTES CONTAINING THE RESULTS OF THE TEST PIT OR PITS IS INCLUDED ON THE DRAWINGS. EXISTING UTILITIES IN THE VICINITY OF THE PROPOSED WORK FOR WHICH TEST PITS HAVE NOT BEEN DUG SHALL BE LOCATED BY THE CONTRACTOR TWO WEEKS IN ADVANCE OF CONSTRUCTION OPERATIONS AT HIS OWN EXPENSE.
  - THE CONTRACTOR SHALL NOTIFY THE FOLLOWING UTILITY COMPANIES OR AGENCIES AT LEAST FIVE WORKING DAYS BEFORE STARTING WORK ON THESE PLANS:
 

AT&T	1-800-252-1133
BGE (CONTRACTOR SERVICES)	410-850-4620
BGE (UNDER GROUND DAMAGE CONTROL)	410-685-1400
BUREAU OF UTILITIES	410-313-4900
COLONIAL PIPELINE CO.	410-795-1340
MISS UTILITY	1-800-257-7777
STATE HIGHWAY ADMINISTRATION	410-531-5533
VERIZON	1-800-743-0033 / 410-224-4210
  - TREES AND SHRUBS ARE TO BE PROTECTED FROM DAMAGE TO THE MAXIMUM EXTENT. TREES AND SHRUBS LOCATED WITHIN THE CONSTRUCTION AREA STRIP ARE NOT TO BE REMOVED OR DAMAGED BY THE CONTRACTOR.
  - THE CONTRACTOR SHALL REMOVE TREES, STUMPS AND ROOTS ALONG THE LINE OF EXCAVATION. PAYMENT FOR SUCH REMOVAL SHALL BE INCLUDED IN THE UNIT PRICE BID FOR CONSTRUCTION OF THE MAIN.
  - THE CONTRACTOR SHALL NOTIFY THE BUREAU OF HIGHWAYS, HOWARD COUNTY, AT (410)-313-7450 AT LEAST FIVE WORKING DAYS BEFORE OPEN CUTTING OR BORING/LACKING OF ANY COUNTY ROAD FOR LAYING WATER/SEWER MAINS OR HOUSE CONNECTIONS. THE APPROVAL OF THESE DRAWINGS WILL CONSTITUTE COMPLIANCE WITH DPW REQUIREMENTS PER SECTION 18.114(g) OF THE HOWARD COUNTY CODE.



**SHEET INDEX**

- COVER SHEET
- WATER & SEWER PLAN
- WATER & SEWER PROFILES
- WATER & SEWER DETAILS, MINIMUM CELLAR ELEVATIONS & AS-BUILT INFORMATION

WHC'S & SHC'S TO LOTS 407 THRU 411 ARE EXISTING. THEY WERE INSTALLED UNDER CONT. # 24-4430-D.  
 WHC TO LOT 412 IS EXISTING. THE CONNECTION WAS INSTALLED UNDER CONT. # 24-4430-D.

TYPE OF BUILDING	RESIDENTIAL
NUMBER OF UNITS	60
NUMBER OF S.H.C.'s	43
NUMBER OF W.H.C.'s	43
AREA OF COMMERCIAL LOT/PARCEL	16.6231 Ac.
SEWER SHED	LITTLE PATUXENT
PUMPING STATION	LITTLE PATUXENT WRP

CONTRACT No. 24-4685-D  
**MAPLE LAWN FARMS**  
 HILLSIDE DISTRICT - AREA 5 (PHASE 2)  
 LOTS 406 THRU 441 AND 451 THRU 474,  
 OPEN SPACE LOTS 486,  
 COMMON OPEN AREAS 489 THRU 491 AND P/O 496  
 HOWARD COUNTY, MARYLAND  
 DEPARTMENT OF PUBLIC WORKS

SEDIMENT CONTROL MEASURES WILL BE IMPLEMENTED IN ACCORDANCE WITH F. 10-61 AND SECTION 308 OF THE SPECIFICATIONS AT FINAL ROAD PLAN STAGE.

THIS DEVELOPMENT PLAN IS APPROVED FOR SOIL EROSION AND SEDIMENT CONTROL BY THE HOWARD COUNTY SOIL CONSERVATION DISTRICT.

APPROVED: *John P. Robertson* 9/19/10  
 HOWARD S.C.D. Date

DEPARTMENT OF PUBLIC WORKS  
 HOWARD COUNTY, MARYLAND

*Steve Clem* 9/23/10  
 CHIEF, BUREAU OF UTILITIES DATE

DEPARTMENT OF PLANNING AND ZONING  
 HOWARD COUNTY, MARYLAND

*Mark Pennington* 9/22/10  
 CHIEF, DEVELOPMENT ENGINEERING DIVISION DATE

**GLWGUTSCHICK LITTLE & WEBER, P.A.**  
 CIVIL ENGINEERS, LAND SURVEYORS, LAND PLANNERS, LANDSCAPE ARCHITECTS  
 3009 NATIONAL DRIVE - SUITE 250 - BURTONSVILLE OFFICE PARK  
 BURTONSVILLE, MARYLAND 20866  
 TEL: 301-421-4024 FAX: 301-421-4188

DATE: AUGUST 2010  
 G.L.W. No. 07001  
 EXP. DATE: MAY 29, 2012

PROFESSIONAL CERTIFICATION

I HEREBY CERTIFY THAT THESE PLANS WERE PREPARED OR APPROVED BY ME AND THAT I AM A DULY LICENSED PROFESSIONAL ENGINEER UNDER THE LAWS OF THE STATE OF MARYLAND, LICENSE NO. 12975  
 EXP. DATE: MAY 29, 2012

*Mark Pennington*  
 BY NO AS BUILT

REVISION	DATE
10/4/11	

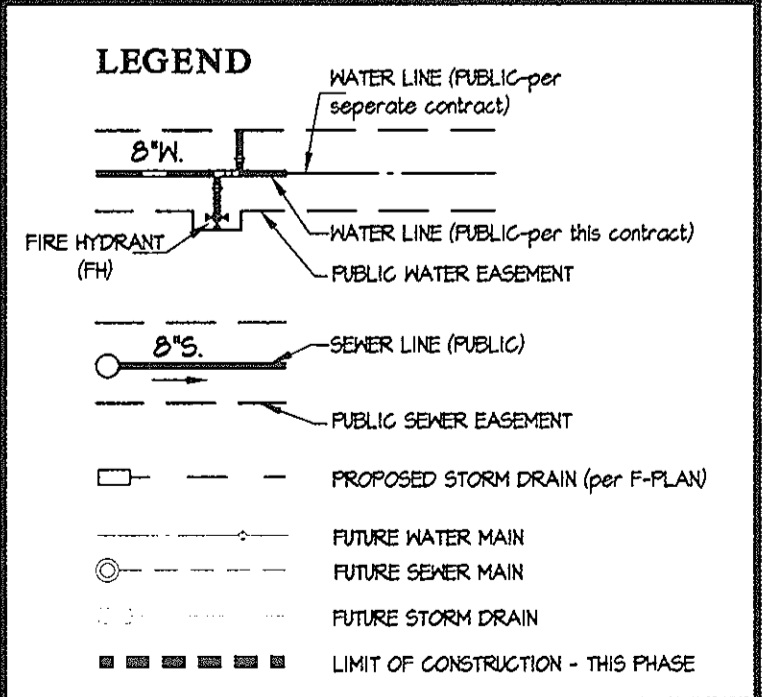
COVER SHEET

600' SCALE MAP NO. 41 BLOCK NO. 22

**MAPLE LAWN FARMS**  
 CONTRACT No. 24-4685-D  
 HILLSIDE DISTRICT - AREA 5 (PHASE 2)  
 LOTS 406 THRU 441 AND 451 THRU 474,  
 OPEN SPACE LOTS 486,  
 COMMON OPEN AREAS 489 THRU 491 AND P/O 496  
 HOWARD COUNTY, MARYLAND  
 ELECTION DISTRICT NO. 5

SCALE AS SHOWN  
 SHEET 1 OF 4

PREPARED FOR:  
 G&R MAPLE LAWN, INC.  
 SUITE 300 WOODHOLME CENTER  
 1829 REISTERSTOWN ROAD  
 BALTIMORE, MD 21208  
 ATTN: MARK BENNETT  
 410-484-8400



M#	LOCATION
106	N 541206.07 E 1341338.50
107	N 540881.41 E 1341207.20
108	N 540904.54 E 1341230.73
109	N 54101.59 E 1341091.53
110	N 540919.50 E 1341110.77
123	N 541046.36 E 1340999.99
124	N 540924.85 E 1341030.59

FHT	LOCATION
(A)	N 541051.76 E 1341013.10

FITTING CHART			
STATION	FITTING	NAD '83/'91	COORDINATES
TRAPPEE STREET			
2+73	8" 1/16 HB	N 541047.14	E 1341016.43
2+80	8" 1/16 HB	N 541084.29	E 1341007.68
3+07	8" x 8" TEE	N 541071.01	E 1340994.18
WATER MAIN 'A'			
0+00	8" x 6" TEE	N 540875.22	E 1341186.64
0+35	6" 1/16 HB	N 540900.04	E 1341211.84
0+45	6" 1/16 HB	N 540904.24	E 1341211.97
0+55	6" 1/32 HB	N 540918.43	E 1341208.28

FOR SEWER MANHOLE LOCATION PLAN SEE SHEET 4 OF 4

FOR MINIMUM CELLAR ELEVATIONS SEE SHEET 4 OF 4

FOR WATER AND SEWER PROFILES SEE SHEET 3 OF 4

- NOTES:
- ALL SHOWN SERVING NUMBERED LOTS ARE 4".
  - ALL MANHOLES WILL BE STANDARD 4'-0" (G 5.12).
  - OUTSIDE METERS WILL BE PER HOWARD COUNTY DETAIL N 332 FOR TWIN CONNECTIONS AND DETAIL N 328 FOR SINGLE CONNECTIONS.
  - ALL MHO'S SHOWN SERVING NUMBERED LOTS ARE 1 1/2", UNLESS OTHERWISE NOTED SEE STD. DTL. W332.

PREPARED FOR:  
G&R MAPLE LAWN, INC.  
SUITE 300 WOODHOLME CENTER  
1829 REISTERSTOWN ROAD  
BALTIMORE, MD 21208  
ATTN: MARK BENNETT  
410-484-8400

DEPARTMENT OF PUBLIC WORKS  
HOWARD COUNTY, MARYLAND  
*John Clem*  
CHIEF, BUREAU OF UTILITIES  
9/23/10

DEPARTMENT OF PLANNING AND ZONING  
HOWARD COUNTY, MARYLAND  
*Mark Bennett*  
CHIEF, DEVELOPMENT ENGINEERING DIVISION  
9/23/10

**GLWGUTSCHICK LITTLE & WEBER, P.A.**  
CIVIL ENGINEERS, LAND SURVEYORS, LAND PLANNERS, LANDSCAPE ARCHITECTS  
3909 NATIONAL DRIVE - SUITE 250 - BURTONSVILLE OFFICE PARK  
BURTONSVILLE, MARYLAND 20866  
TEL: 301-421-4024 BAL: 410-880-1820 DC/VA: 301-989-2524 FAX: 301-421-4186

DATE  
AUGUST  
2010  
G.L.W. No.  
07001

PROFESSIONAL CERTIFICATION  
I HEREBY CERTIFY THAT THESE PLANS WERE PREPARED OR APPROVED BY ME, AND THAT I AM A DULY LICENSED PROFESSIONAL ENGINEER UNDER THE LAWS OF THE STATE OF MARYLAND, LICENSE NO. 12975  
EXP. DATE: MAY 26, 2012  
*Mark Bennett*

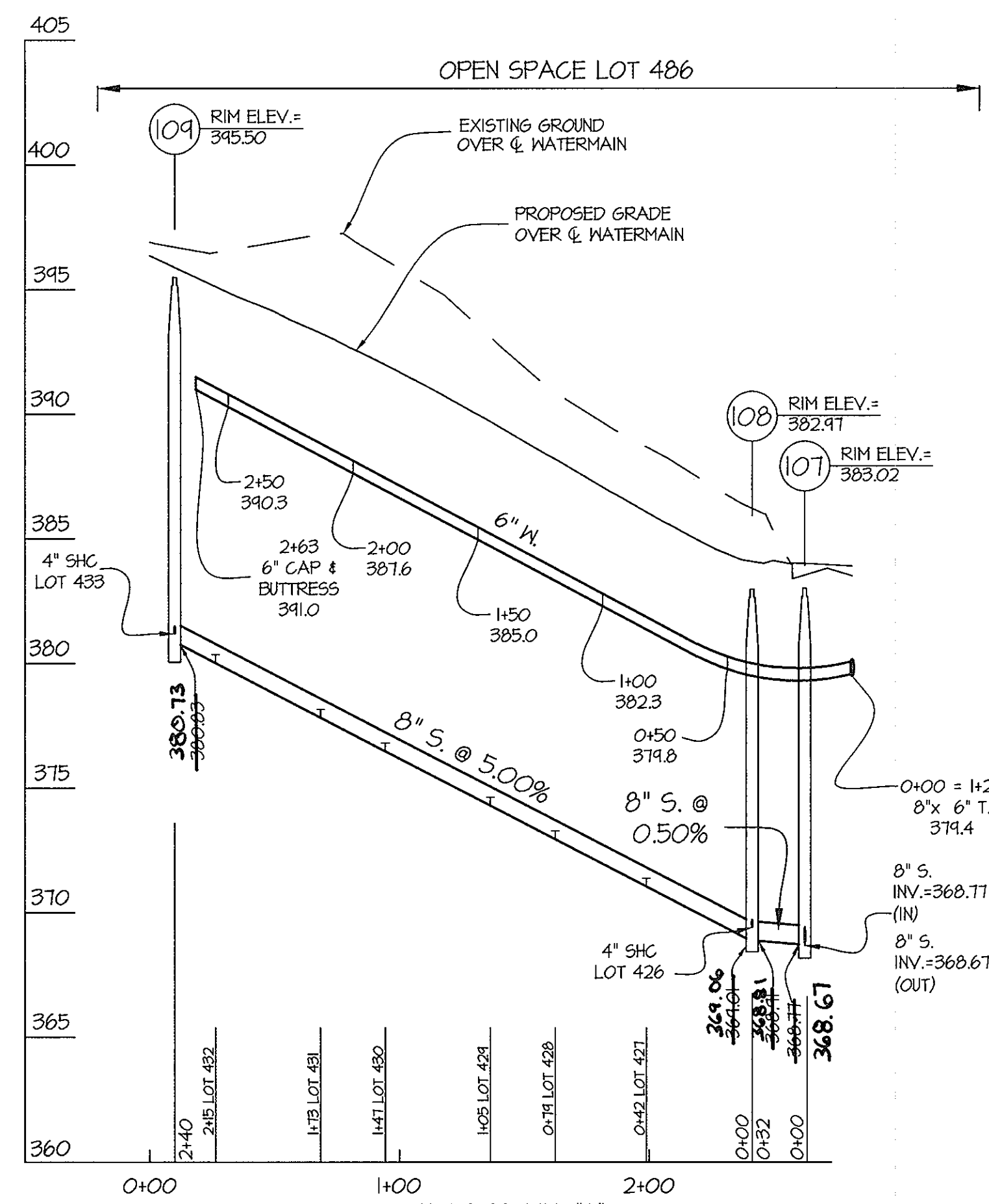
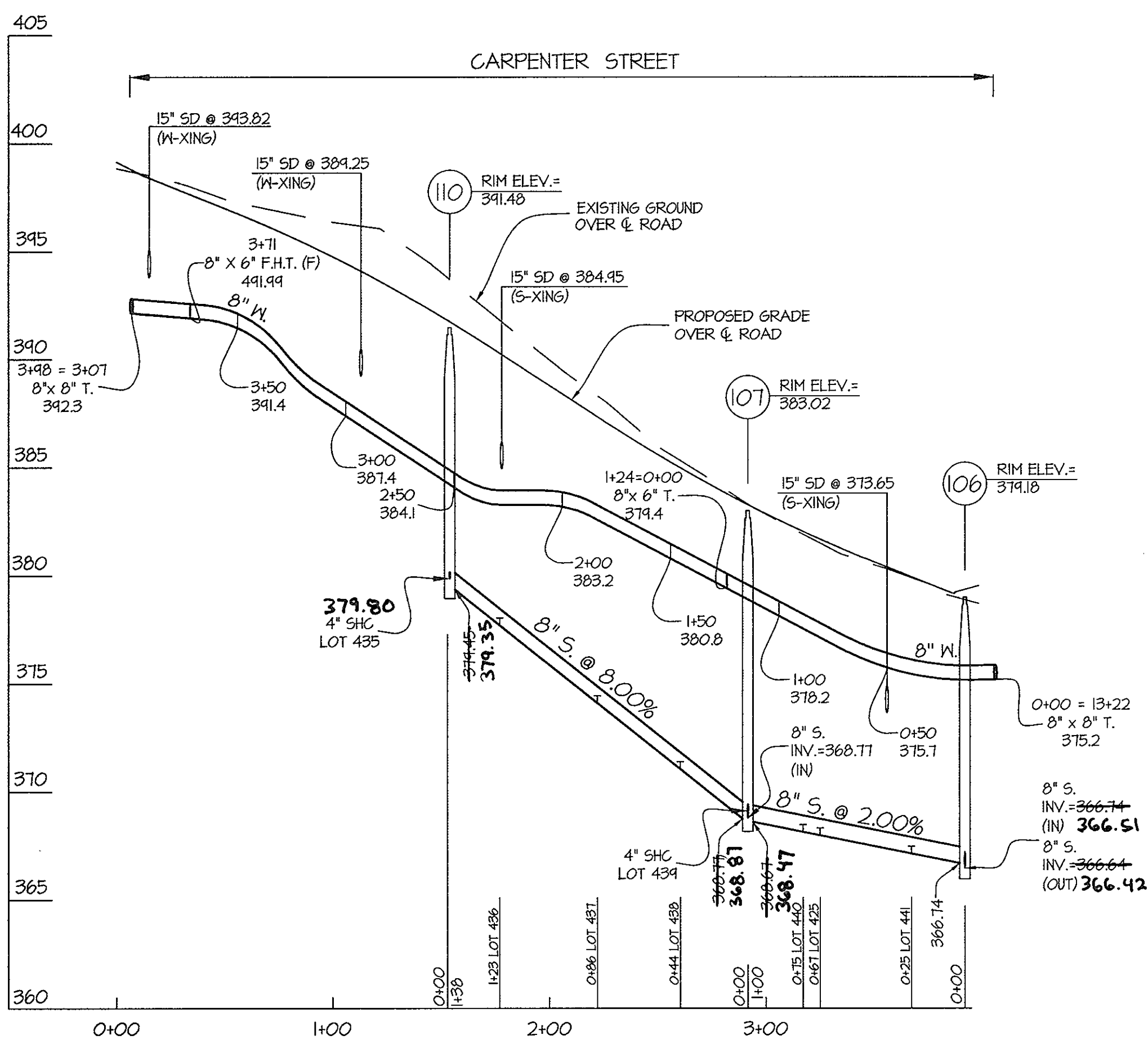
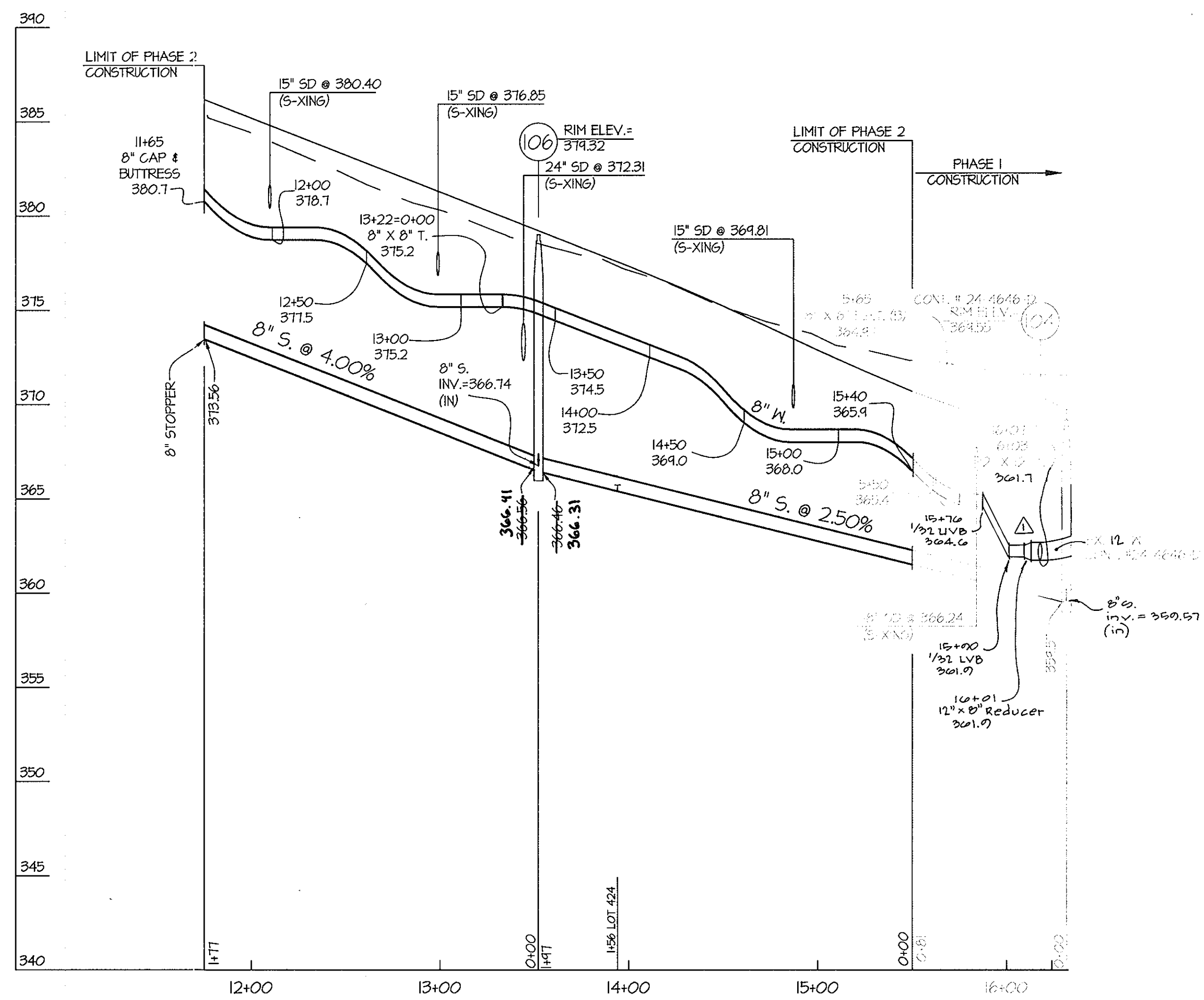
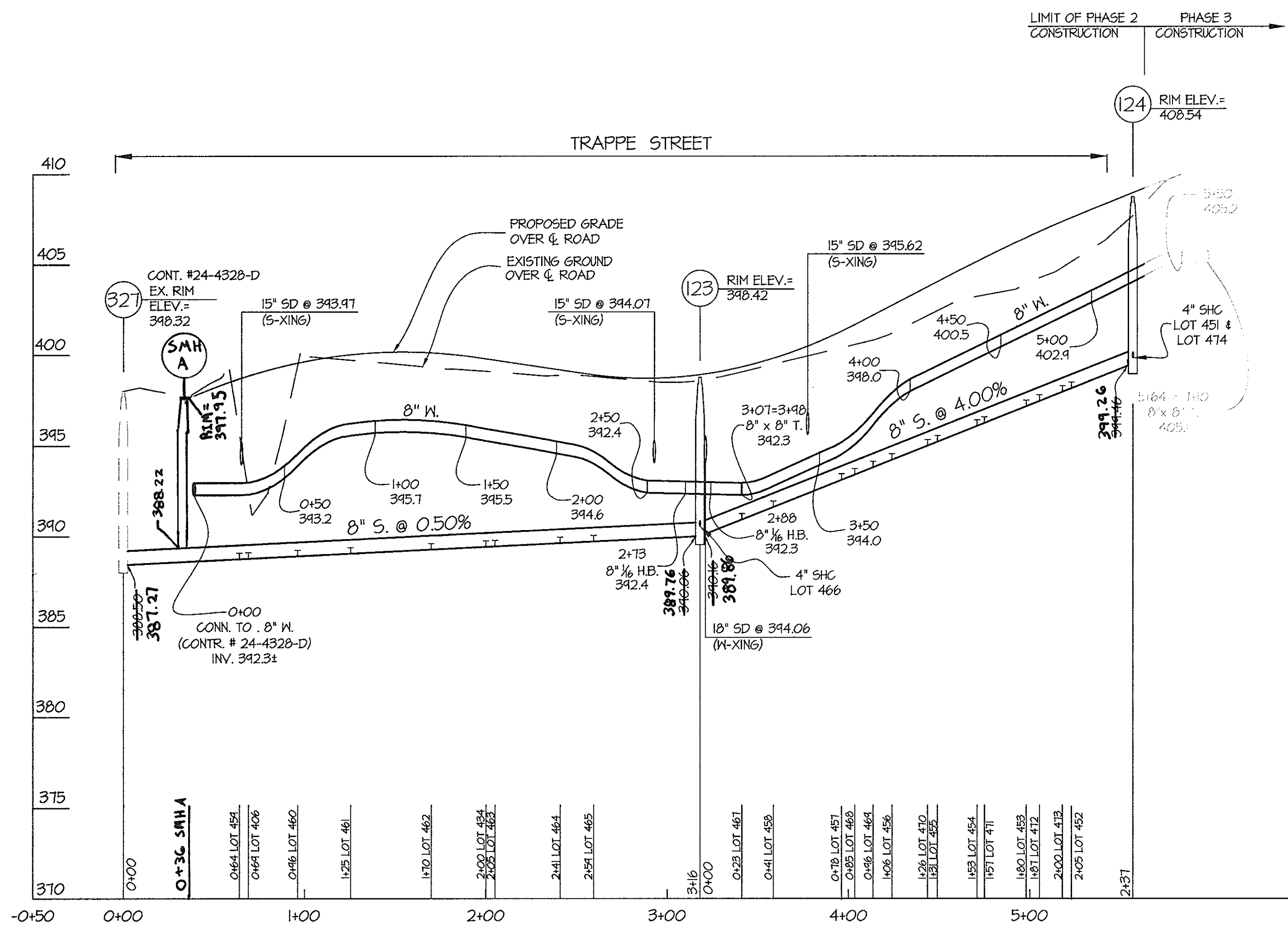
BY	NO	REVISION	DATE
TDB	1	AS BUILT	10/11

WATER & SEWER PLAN  
600' SCALE MAP NO. 41 BLOCK NO. 22

**MAPLE LAWN FARMS**  
CONTRACT No. 24-4685-D  
HILLSIDE DISTRICT - AREA 5 (PHASE 2)  
LOTS 406 THRU 441 AND 451 THRU 474,  
OPEN SPACE LOTS 486,  
COMMON OPEN AREAS 489 THRU 491 AND P/O 496  
HOWARD COUNTY, MARYLAND  
ELECTION DISTRICT No. 5

SCALE  
1"=50'  
SHEET  
2 OF 4

I, CADY DUNN, DESIGNER, DESIGNER'S SEAL, DESIGNER'S SIGNATURE, DATE, PROJECT NO., SHEET NO., TOTAL SHEETS, PLOTTED 8/16/2010 8:29 AM, LAST SAVED 8/16/2010 8:00 AM, PLOTTED BY: Cady Dunn, RVT



FOR WATER AND SEWER PLAN VIEW SEE SHEET 2 OF 4

PREPARED FOR:  
G&R MAPLE LAWN, INC.  
SUITE 300 WOODHOLME CENTER  
1829 REISTERSTOWN ROAD  
BALTIMORE, MD 21208  
ATTN: MARK BENNETT  
410-484-8400

L:\VARD\DRAWINGS\4001\0701\WESTERNA\PHASE 2\10\0701\PHASE 2\PROF-1112.dwg  
 PLOTTED 8/16/2010 8:48 AM, LAST SAVED 8/1/2010 1:31 PM, PLOTTED BY: Doug Young, RYA

<b>DEPARTMENT OF PUBLIC WORKS</b> HOWARD COUNTY, MARYLAND Chief, Bureau of Utilities		<b>DEPARTMENT OF PLANNING AND ZONING</b> HOWARD COUNTY, MARYLAND Chief, Development Engineering Division		<b>GLW GUTSCHICK LITTLE &amp; WEBER, P.A.</b> CIVIL ENGINEERS, LAND SURVEYORS, LAND PLANNERS, LANDSCAPE ARCHITECTS 3909 NATIONAL DRIVE - SUITE 250 - BURTONSVILLE OFFICE PARK BURTONSVILLE, MARYLAND 20866 TEL: 301-421-4024 BALT: 410-880-1820 DC/VA: 301-999-2524 FAX: 301-421-4186		<b>PROFESSIONAL CERTIFICATION</b> I HEREBY CERTIFY THAT THESE PLANS WERE PREPARED OR APPROVED BY ME, AND THAT I AM A DULY LICENSED PROFESSIONAL ENGINEER UNDER THE LAWS OF THE STATE OF MARYLAND, LICENSE NO. 12975 EXP. DATE: MAY 26, 2012				106 AS GLW-IT Rev. W.M. vertically at intersection of Tower & Morris to eliminate conflict w/ 3rd stream drain		10/4/11 DATE		<b>MAPLE LAWN FARMS</b> CONTRACT No. 24-4685-D HILLSIDE DISTRICT - AREA 5 (PHASE 2) LOTS 406 THRU 441 AND 451 THRU 474, OPEN SPACE LOTS 486, COMMON OPEN AREAS 489 THRU 491 AND P/O 496 HOWARD COUNTY, MARYLAND ELECTION DISTRICT No. 5		SCALE AS SHOWN SHEET 3 OF 4	
WATER & SEWER EXTENSION PROFILES 600' SCALE MAP NO. 41 BLOCK NO. 22																	

