

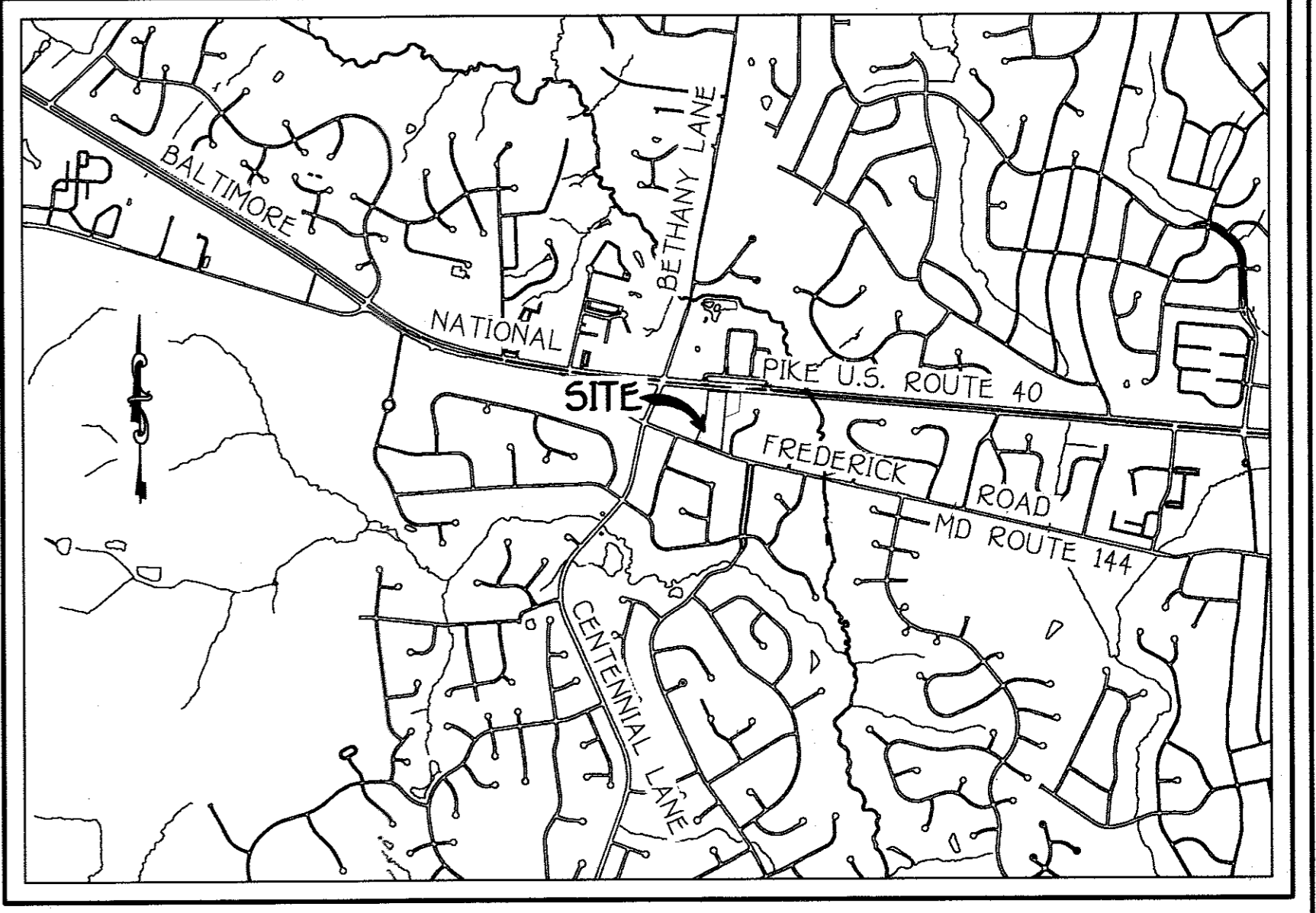
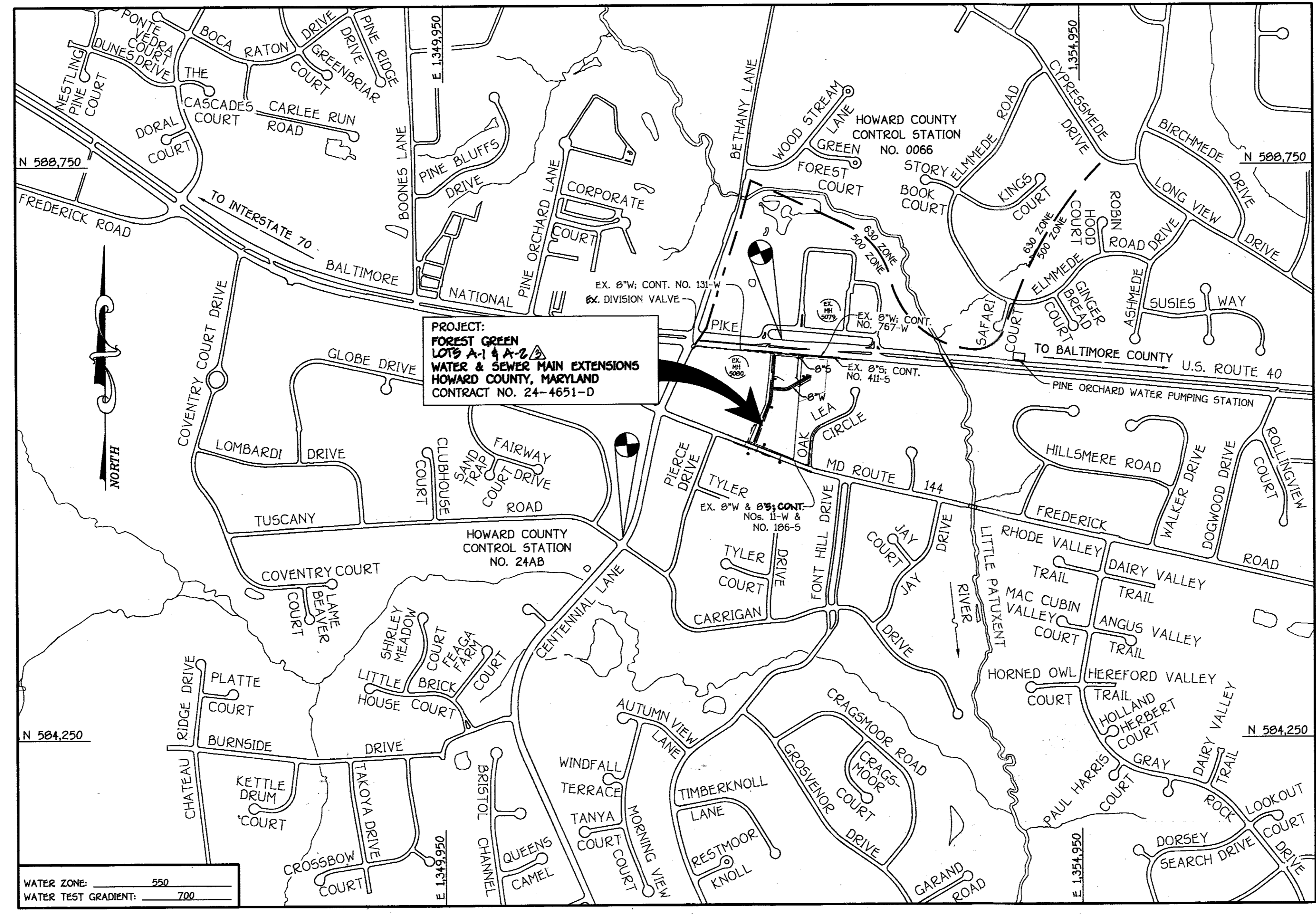
QUANTITIES				
ITEM	ESTIMATED	QUANTITIES	TYPE	SUPPLIER
8" SEWER MANHOLE	203 LF.	36'	SDR 35 CONCRETE	NORTH AMERICAN CONTRACTORS PAPER
8" WATER MANHOLE	1,085 LF.	1,075	C900 CONCRETE	NORTH AMERICAN CONTRACTORS PAPER
8" WATER	91 LF.	90	C900	NORTH AMERICAN CONTRACTORS PAPER
8"X8" TAPPING SLEEVE	2 EACH	2	DIP	FORD METER BOX
8"X8" TAPPING VALVE	2 EACH	2	DIP	FORD METER BOX
8" TAPPING VALVE	2 EACH	2	DIP	KENNEDY VALVE
6" TAPPING VALVE	2 EACH	2	DIP	KENNEDY VALVE
8" VALVE	4 EACH	4	DIP	KENNEDY VALVE
6" VALVE	3 EACH	3	DIP	KENNEDY VALVE
8"X8" TEE	3 EACH	4	DIP	STAR PIPE
8"X8" TEE	4 EACH	4	DIP	STAR PIPE
FIRE HYDRANT	4 EACH	4	DIP	KENNEDY VALVE
1/8" H.B.	1 EACH	1	C900	KENNEDY VALVE
1/8" H.B.	1 EACH	1	C900	KENNEDY VALVE
1/32" H.B.	2 EACH	2	C900	KENNEDY VALVE
4" H.B.	1 EACH	1	C900	KENNEDY VALVE
8" PLUG & BUTTRESS	3 EACH	3	DIP	FORD
CONTINUITY TEST STATION	3 EACH	3	CONCRETE	HOME CONCRETE
8"X4" TEE	1 EACH	1	DIP	STAR PIPE
4" VALVE	1 EACH	1	DIP	KENNEDY VALVE
4" PLUG & BUTTRESS	1 EACH	1	DIP	FORD
4" WATER	10 LF.	10	C900	NORTH AMERICAN CONTRACTORS PAPER
1/2" WAG	20 LF.	22	COPPER	

NAME OF UTILITY CONTRACTOR:
 SURVEY & DRAFTING DIVISION AS-BUILT DATE: 3-10-16

1" SINGLE CURVE	1 EACH	1	METER	FORD
8" VALVE	1 EACH	1	DIP	NORTH AMERICAN CONTRACTORS PAPER
4" SEWER	20 LF.	20	SDR 35	NORTH AMERICAN CONTRACTORS PAPER
6" SEWER	10 LF.	10	SDR 35	NORTH AMERICAN CONTRACTORS PAPER

B.M.-1 - BENCHMARK INFORMATION
 HOWARD COUNTY CONTROL STATION #24AB (NAD '83)
 LOCATED AT THE INTERSECTION OF TUSCANY ROAD & CENTENNIAL LANE;
 19.5' NORTH FROM BGE POLE NO. 36319D
 N 505,836.915
 E 1,351,345.546
 ELEVATION = 383.205 - VERTICAL - (NAD '83)

B.M.-2 - HOWARD COUNTY CONTROL STATION #0066 (NAD '83)
 LOCATED IN THE PARKING LOT OF ENCHANTED FOREST SHOPPING CENTER,
 APPROX. 0.1 MILE EAST OF MAINTENANCE ENTRANCE
 N 587,380.4525
 E 1,352,503.4593
 ELEVATION = 366.589 - VERTICAL - (NAD '83)



VICINITY MAP
 SCALE: 1" = 2000'

GENERAL NOTES

- PART A
- APPROXIMATE LOCATIONS OF EXISTING MAINS ARE SHOWN. THE CONTRACTOR SHALL TAKE ALL NECESSARY PRECAUTIONS TO PROTECT EXISTING MAINS AND SERVICES AND HAZARDOUS UNDISRUPTED SERVICE. ANY DAMAGE INCURRED SHALL BE REPAIRED IMMEDIATELY TO THE SATISFACTION OF THE ENGINEER. AT THE CONTRACTOR'S EXPENSE.
 - TOPOGRAPHIC FIELD SURVEYS WERE PERFORMED ON OR ABOUT AUGUST, 2006 BY FISHER, COLLINS & CARTER, INC.
 - HORIZONTAL AND VERTICAL SURVEY CONTROLS:
 THE COORDINATES SHOWN ON THE DRAWINGS ARE BASED ON MARYLAND STATE REFERENCE SYSTEM NAD '83/91' AS PROJECTED BY HOWARD COUNTY GEODETIC CONTROL STATIONS NO. 24AB & NO. 0066.
 ALL VERTICAL CONTROLS ARE AS INDICATED IN THE BENCHMARK INFORMATION. VERTICAL CONTROLS PROVIDED ON THE DRAWINGS.
 - ALL PIPE ELEVATIONS SHOWN ARE INVERT ELEVATIONS UNLESS OTHERWISE NOTED ON THE PLANS.
 - CLEAR ALL UTILITIES BY A MINIMUM OF 12 INCHES. CLEAR ALL POLES BY 5'-0" MINIMUM OR TUNNEL AS REQUIRED UNLESS OTHERWISE NOTED. THE OWNER HAS CONTACTED THE UTILITY COMPANIES AND HAS MADE ARRANGEMENTS FOR BRACING OF POLES AS SHOWN ON THE DRAWINGS. IN THE EVENT THE CONTRACTOR'S WORK REQUIRES BRACING OF ADDITIONAL POLES, ANY COST INCURRED BY THE OWNER FOR THE BRACING OF THE ADDITIONAL POLES OR DAMAGES SHALL BE DEDUCTED FROM MONIES OWED THE CONTRACTOR. THE CONTRACTOR SHALL COORDINATE WITH THE UTILITY COMPANIES TO SCHEDULE THE BRACING OF THE POLES.
 - FOR DETAILS NOT SHOWN ON THE DRAWINGS, AND FOR MATERIALS AND CONSTRUCTION METHODS, USE HOWARD COUNTY DESIGN MANUAL, VOLUME IV, STANDARD SPECIFICATIONS AND DETAILS FOR CONSTRUCTION (LATEST EDITION). THE CONTRACTOR SHALL HAVE A COPY OF VOLUME IV ON THE JOB SITE.
 - WHERE TEST PITS HAVE BEEN MADE ON EXISTING UTILITIES, THEY ARE NOTED BY THE SYMBOL (P) AT THE LOCATIONS OF THE TEST PITS. A NOTE OR NOTES CONTAINING THE RESULTS OF THE TEST PIT OR PITS IS INCLUDED ON THE DRAWINGS. EXISTING UTILITIES IN THE VICINITY OF THE PROPOSED WORK FOR WHICH TEST PITS HAVE NOT BEEN DUG SHALL BE LOCATED BY THE CONTRACTOR TWO WEEKS IN ADVANCE OF CONSTRUCTION OPERATIONS AT HIS OWN EXPENSE.
 - THE CONTRACTOR SHALL NOTIFY THE FOLLOWING UTILITY COMPANIES OR AGENCIES AT LEAST FIVE WORKING DAYS BEFORE STARTING WORK SHOWN ON THESE PLANS:
 AT&T 1-800-252-1133
 BGE (CONSTRUCTION SERVICES) 410-537-8713
 BGE (EMERGENCY) 410-685-0123
 BUREAU OF UTILITIES 410-313-4900
 COLONY PIPELINE CO. 410-795-1300
 MISS UTILITY 1-800-257-7777
 STATE HIGHWAY ADMINISTRATION 410-531-5533
 VERIZON 1-800-743-0033
 - TREES AND SHRUBS ARE TO BE PROTECTED FROM DAMAGE TO THE MAXIMUM EXTENT. TREES AND SHRUBS LOCATED WITHIN THE CONSTRUCTION STRIP ARE NOT TO BE REMOVED OR DAMAGED BY THE CONTRACTOR.
 - CONTRACTOR SHALL REMOVE TREES, STUMPS AND ROOTS ALONG THE LINE OF EXCAVATION. PAYMENT FOR SUCH REMOVAL SHALL BE INCLUDED IN THE UNIT PRICE BID FOR THE CONSTRUCTION OF THE MAIN.
 - THE CONTRACTOR SHALL NOTIFY THE BUREAU OF HIGHWAYS, HOWARD COUNTY, AT (410)-313-7450 AT LEAST FIVE WORKING DAYS BEFORE OPEN CUTTING OR BORING/JACKING OF ANY COUNTY ROAD FOR LAYING WATER/SEWER MAINS OR HOUSE CONNECTIONS. THE APPROVAL OF THESE DRAWINGS WILL CONSTITUTE COMPLIANCE WITH DPW REQUIREMENTS PER SECTION 101.14(K) OF THE HOWARD COUNTY CODE.

TYPE OF BUILDING: COMMERCIAL OFFICE/RETAIL
 NUMBER OF BUILDINGS: 6
 NO. OF WATER HOUSE CONNECTIONS: -6-
 NO. OF SEWER HOUSE CONNECTIONS: -0-
 DRAINAGE AREA: LITTLE PATUXENT
 TREATMENT PLANT: LITTLE PATUXENT WATER RECLAMATION PLANT, SAVAGE, MARYLAND

LOCATION MAP
 SCALE: 1" = 600'

PLAN REFERENCE NUMBERS:
 SDP-10-036 F-II-020
 (RECORD PLAT)

DEVELOPER'S CERTIFICATION
 I, I/VE HEREBY CERTIFY THAT ALL DEVELOPMENT AND CONSTRUCTION WILL BE DONE ACCORDING TO THIS PLAN OF DEVELOPMENT AND PLAN FOR EROSION AND SEDIMENT CONTROL AND THAT ALL RESPONSIBLE PERSONNEL INVOLVED IN THE CONSTRUCTION PROJECT WILL HAVE A CERTIFICATE OF ATTENDANCE AT THE DEPARTMENT OF THE ENVIRONMENT APPROVED TRAINING PROGRAM FOR THE CONTROL OF SEDIMENT AND EROSION BEFORE BEGINNING THE PROJECT. I ALSO AUTHORIZE PERIODIC ON-SITE INSPECTION BY THE HOWARD SOIL CONSERVATION DISTRICT OR THEIR AUTHORIZED AGENTS, AS ARE DEEMED NECESSARY.

Paul W. Kriebel, FOR:
 FOREST VENTURES 12-10-10
 SIGNATURE OF DEVELOPER DATE

ENGINEER'S CERTIFICATION
 I HEREBY CERTIFY THAT THIS PLAN FOR EROSION AND SEDIMENT CONTROL REPRESENTS A PRACTICAL AND WORKABLE PLAN BASED ON MY PERSONAL KNOWLEDGE OF THE SITE CONDITIONS AND THAT IT WAS PREPARED IN ACCORDANCE WITH THE REQUIREMENTS OF THE HOWARD SOIL CONSERVATION DISTRICT.

Paul W. Kriebel 12/10/10
 SIGNATURE OF ENGINEER DATE

SEDIMENT CONTROL MEASURES FOR THIS CONTRACT WILL BE IMPLEMENTED IN ACCORDANCE WITH SECTION 309 OF THE HOWARD COUNTY DESIGN MANUAL - VOLUME IV, STANDARD SPECIFICATIONS AND DETAILS FOR CONSTRUCTION AND AS SHOWN ON THE SITE DEVELOPMENT PLAN, SDP-10-036.

Paul W. Kriebel, FOR:
 FOREST VENTURES 12/10/10
 SIGNATURE OF DEVELOPER DATE

SDP-10-036

THIS DEVELOPMENT IS APPROVED FOR EROSION AND SEDIMENT CONTROL BY HOWARD SOIL CONSERVATION DISTRICT.

APPROVED: John F. Kriebel 1/13/16
 HOWARD SOIL CONSERVATION DISTRICT DATE

CONTRACT NO. 24-4651-D
FOREST GREEN
 LOTS A-1 & A-2
 WATER AND SEWER MAIN EXTENSIONS
 HOWARD COUNTY, MARYLAND

AS BUILTS
 DATE: DFI DATE: 3-10-16

DEVELOPER
 FOREST VENTURES
 5300 DORSEY HALL DRIVE
 SUITE 102
 ELLICOTT CITY, MARYLAND 21042

CONTRACT NO. 24-4651-D
 FOREST GREEN
 LOTS A-1 & A-2
 WATER AND SEWER MAIN EXTENSIONS
 HOWARD COUNTY, MARYLAND

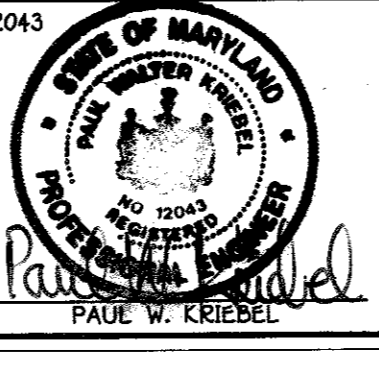
DEPARTMENT OF PUBLIC WORKS
 HOWARD COUNTY, MARYLAND

DEPARTMENT OF PLANNING AND ZONING
 HOWARD COUNTY, MARYLAND

1/12/11
 DATE M.G.

I HEREBY CERTIFY THAT THESE DOCUMENTS WERE PREPARED OR APPROVED BY ME, AND THAT I AM A DULY LICENSED PROFESSIONAL ENGINEER UNDER THE LAWS OF THE STATE OF MARYLAND.
 LICENSE NO. 12043 EXPIRATION DATE IS 7/31/22.

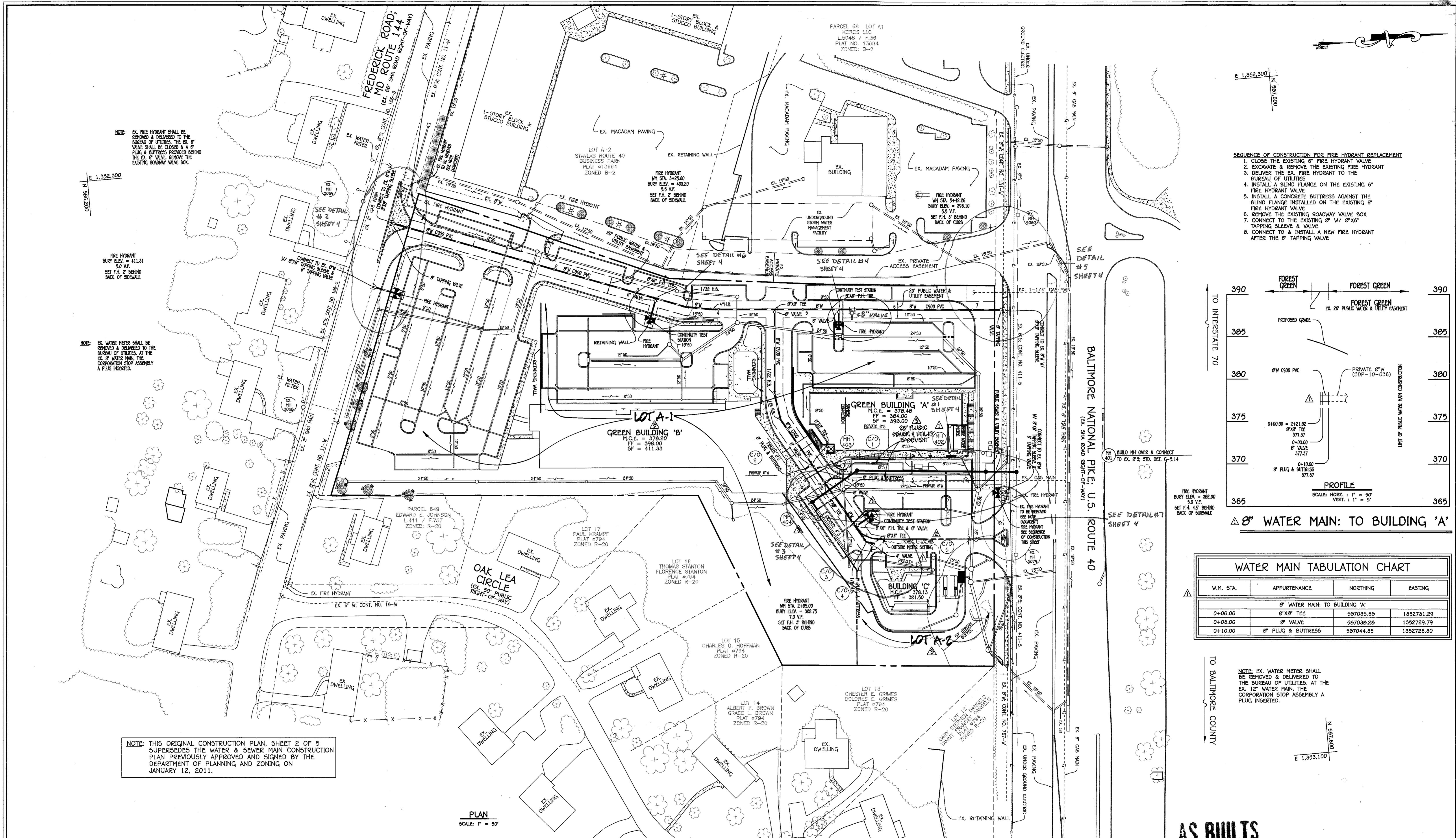
FISHER, COLLINS & CARTER, INC.
 CIVIL ENGINEERING CONSULTANTS & LAND SURVEYORS
 CENTENNIAL SQUARE OFFICE PARK - 18272 BALTIMORE NATIONAL PIKE
 ELLICOTT CITY, MARYLAND 21042
 (410) 461-2855



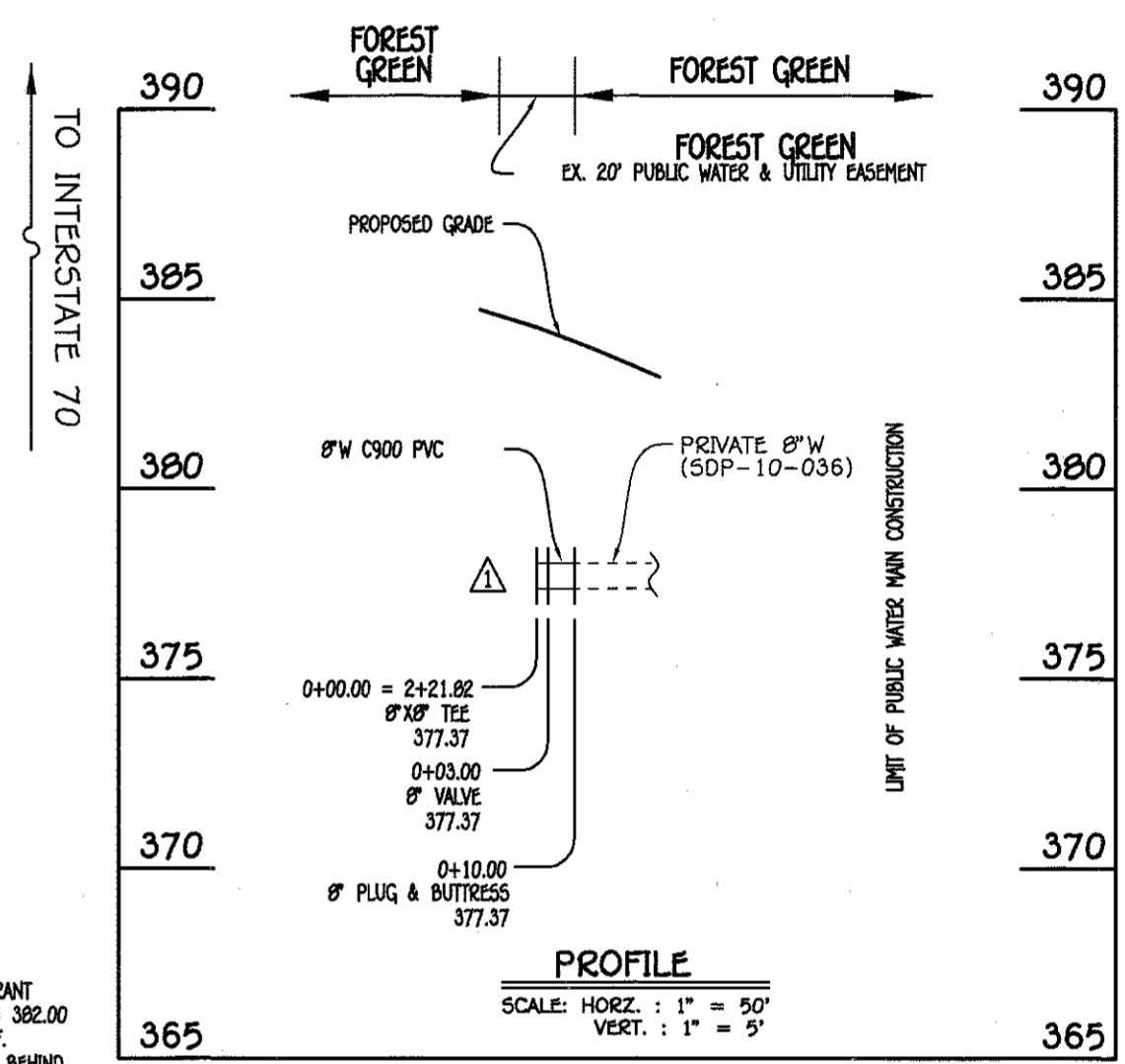
DESIGNED BY:	B.C.R.	
DRAWN BY:	B.C.R.	
CHECKED BY:	P.W.K.	10/23/14
DATE:	DECEMBER, 2010	2/1/10
BY NO.	REVISION	DATE

WATER AND SEWER MAINS TITLE SHEET
600' SCALE MAP NO. 24 BLOCK NO. 2
F.C.C. WORK ORDER NO. 06057
FILE NAME: WATER AND SEWER MAIN EXTENSION

SCALE AS SHOWN
 SHEET 1 OF 5



- SEQUENCE OF CONSTRUCTION FOR FIRE HYDRANT REPLACEMENT**
1. CLOSE THE EXISTING 6" FIRE HYDRANT VALVE
 2. EXCAVATE & REMOVE THE EXISTING FIRE HYDRANT
 3. DELIVER THE EX. FIRE HYDRANT TO THE BUREAU OF UTILITIES
 4. INSTALL A BLIND FLANGE ON THE EXISTING 6" FIRE HYDRANT VALVE
 5. INSTALL A CONCRETE BUTTRESS AGAINST THE BLIND FLANGE INSTALLED ON THE EXISTING 6" FIRE HYDRANT VALVE
 6. REMOVE THE EXISTING ROADWAY VALVE BOX
 7. CONNECT TO THE EXISTING W/ 8" X 6" TAPPING SLEEVE & VALVE
 8. CONNECT TO & INSTALL A NEW FIRE HYDRANT AFTER THE 6" TAPPING VALVE



8" WATER MAIN: TO BUILDING 'A'

WATER MAIN TABULATION CHART			
W.M. STA.	APPURTENANCE	NORTHING	EASTING
8" WATER MAIN: TO BUILDING 'A'			
0+00.00	8" X 8" TEE	587035.68	1352731.29
0+03.00	8" VALVE	587038.28	1352729.79
0+10.00	8" PLUG & BUTTRESS	587044.35	1352726.30

NOTE: EX. WATER METER SHALL BE REMOVED & DELIVERED TO THE BUREAU OF UTILITIES. AT THE EX. 12" WATER MAIN, THE CORPORATION STOP ASSEMBLY A PLUG INSERTED.

NOTE: THIS ORIGINAL CONSTRUCTION PLAN, SHEET 2 OF 5 SUPERSEDES THE WATER & SEWER MAIN CONSTRUCTION PLAN PREVIOUSLY APPROVED AND SIGNED BY THE DEPARTMENT OF PLANNING AND ZONING ON JANUARY 12, 2011.

PLAN
SCALE: 1" = 50'

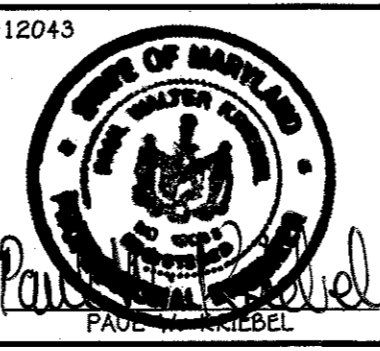
AS BUILTS
DATE: 3-10-16

CONTRACT NO. 24-4651-0
FOREST GREEN
WATER AND SEWER MAIN EXTENSIONS
HOWARD COUNTY, MARYLAND

DEPARTMENT OF PUBLIC WORKS
HOWARD COUNTY, MARYLAND
S. C. Oen
1/14/15
DATE

DEPARTMENT OF PLANNING AND ZONING
HOWARD COUNTY, MARYLAND
C. J. Clark
1-27-15
DATE

I HEREBY CERTIFY THAT THESE DOCUMENTS WERE PREPARED OR APPROVED BY ME, AND THAT I AM A DULY LICENSED PROFESSIONAL ENGINEER UNDER THE LAWS OF THE STATE OF MARYLAND.
#12043
FISHER, COLLINS & CARTER, INC.
CIVIL ENGINEERING CONSULTANTS & LAND SURVEYORS
10722 BALTIMORE NATIONAL PIKE
ELLSWORTH CITY, MARYLAND 21042
(410) 461-2895

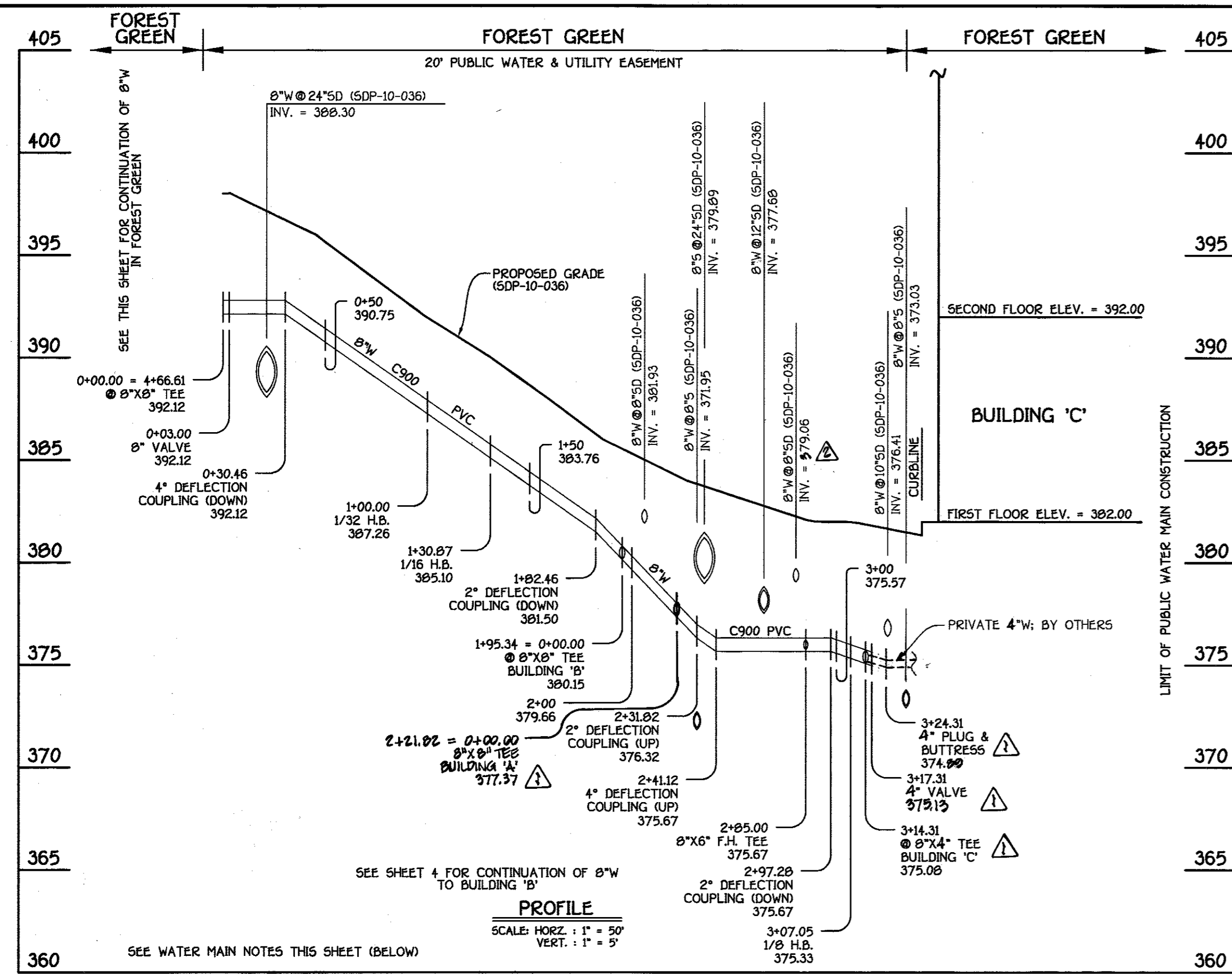


DESIGNED BY:	B.C.R.
DRAWN BY:	B.C.R.
CHECKED BY:	FCC
DATE:	JANUARY, 2015
BY NO.	
REVISION	

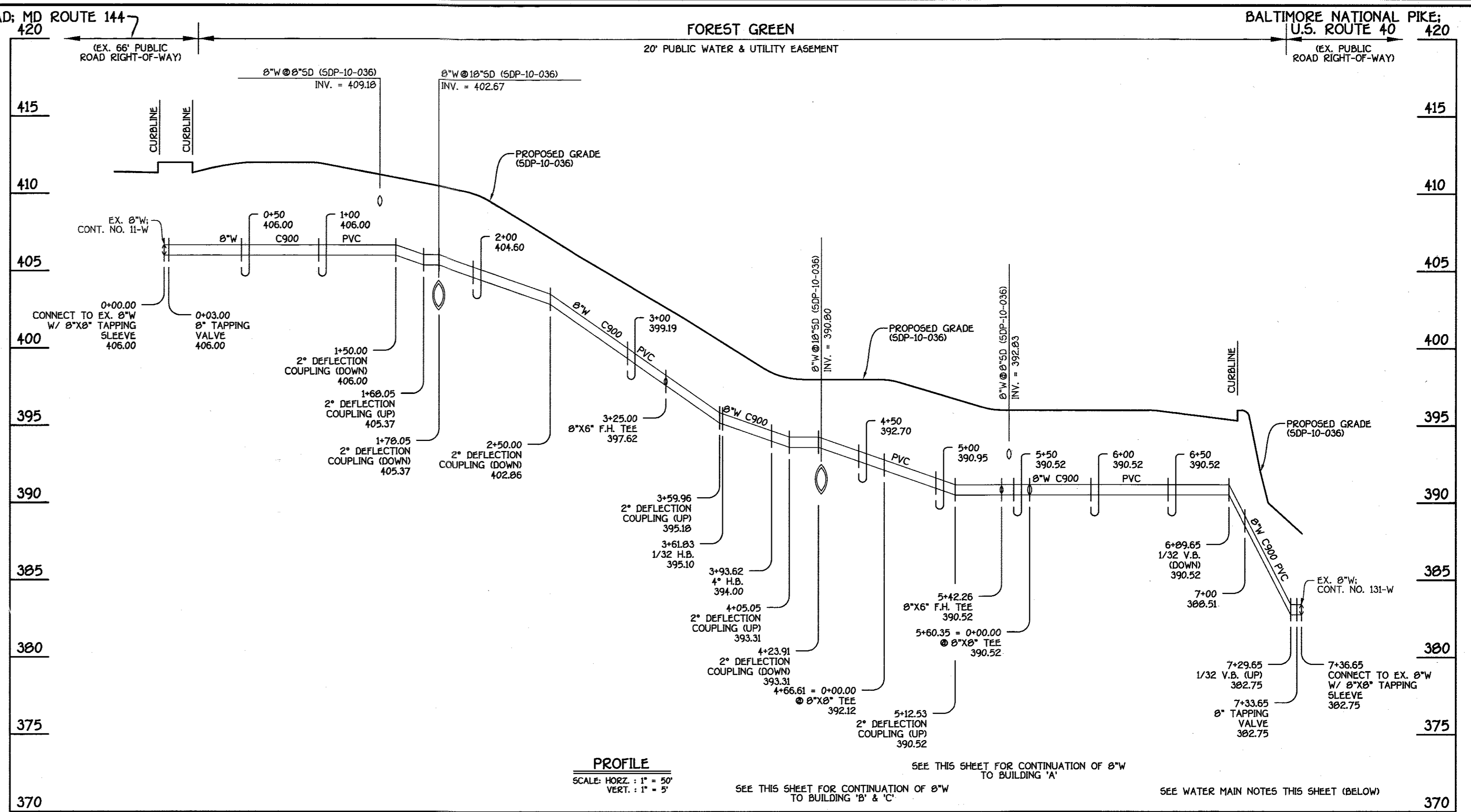
WATER AND SEWER MAINS PLAN
600' SCALE MAP NO. 24 BLOCK NO. 2
F.C.C. WORK ORDER NO. 06067
FILE NAME: WATER AND SEWER MAIN EXTENSION

FOREST GREEN
LOTS A-1 & A-2
CONTRACT NO. 24-4651-0
SECOND ELECTION DISTRICT
HOWARD COUNTY, MARYLAND
SCALE AS SHOWN
SHEET 2 OF 5

I:\2005\06067\DWG\Water & Sewer\Contract\Edline 2 - December 2014\06067 Water And Sewer Edlines (2) 12-1-14.dwg, 1/25/2015 9:04:58 AM

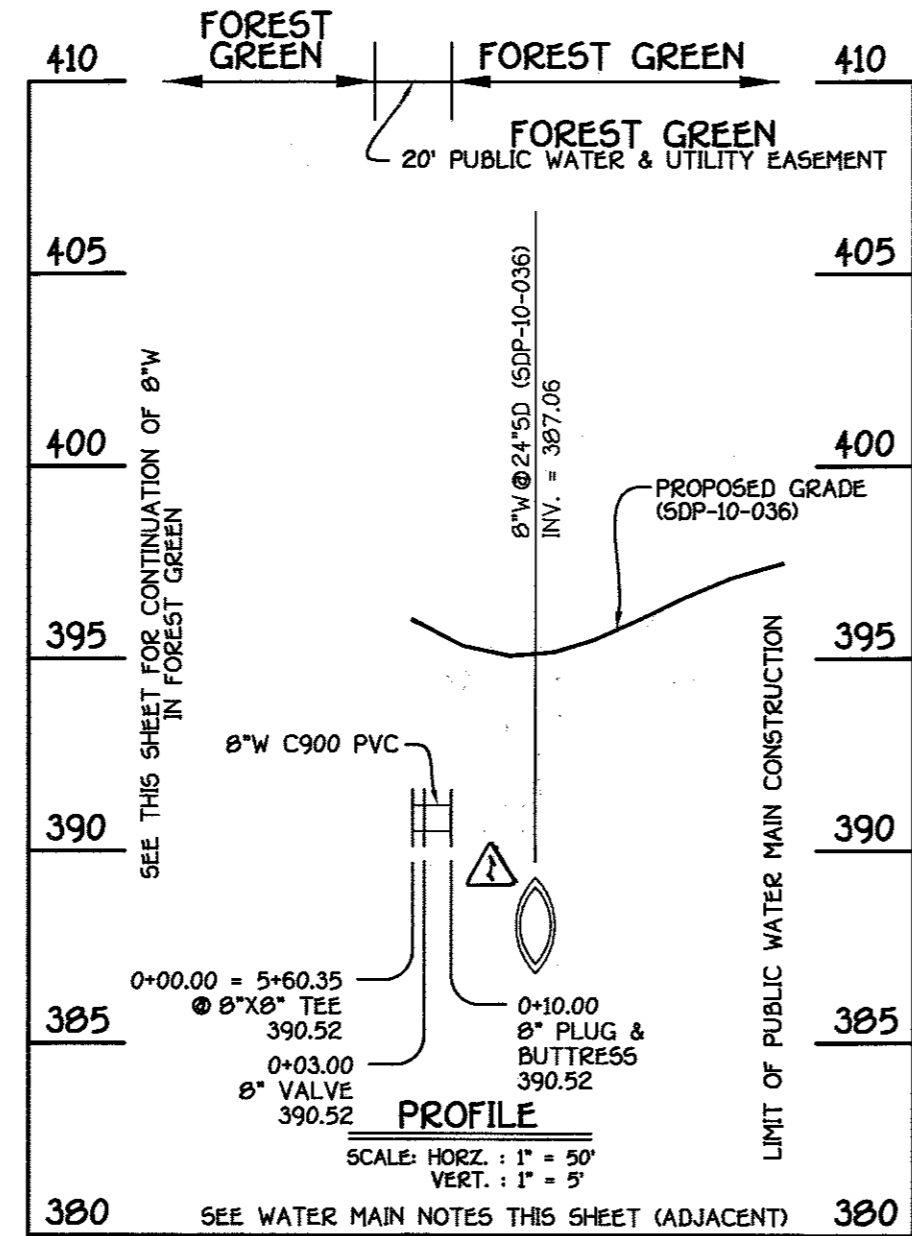


8" WATER MAIN: TO BUILDING 'B' & 'C'



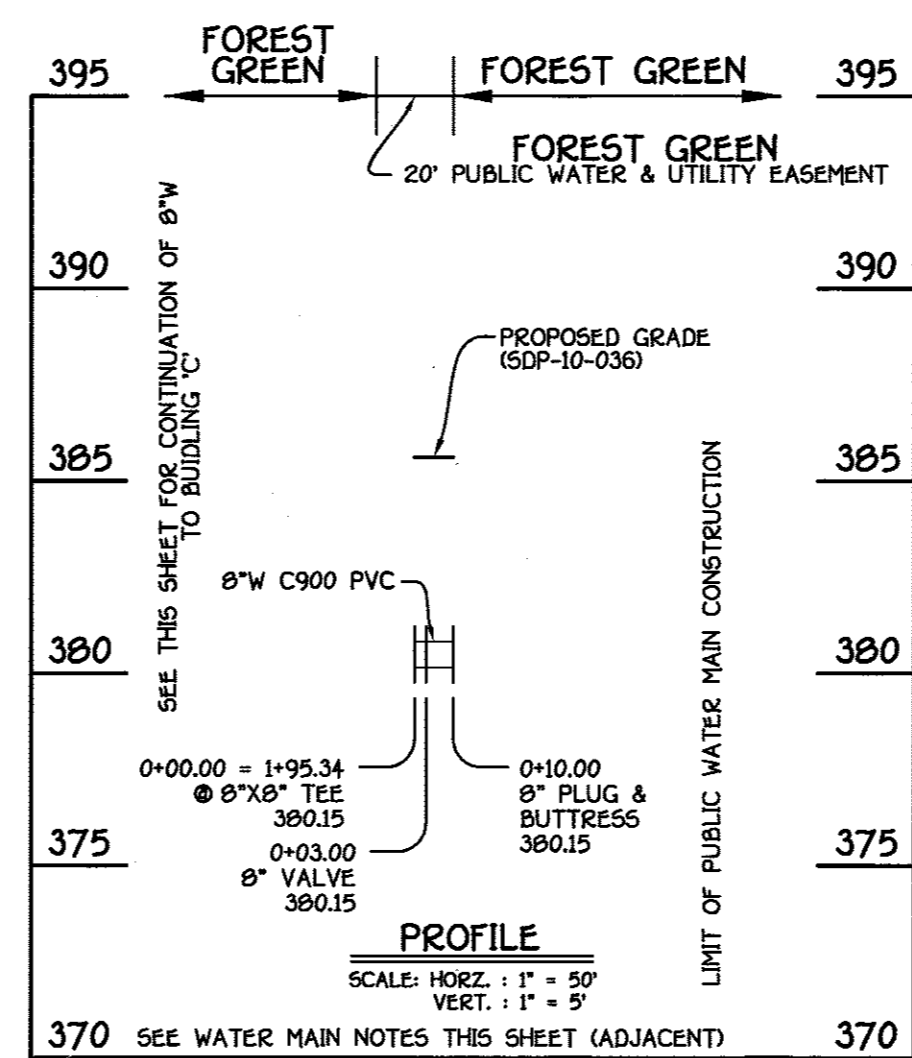
8" WATER MAIN: FOREST GREEN

W.M. STA.	APPURTENANCE	NORTHING	EASTING
8" WATER MAIN TO BUILDING 'B' & 'C'			
0+00.00	8" X 8" TAPPING SLEEVE	506994.51	1352522.33
0+03.00	8" VALVE	506994.25	1352525.32
1+00.00	1/32" H.B.	506985.68	1352621.94
1+30.87	1/16" H.B.	506990.30	1352624.47
1+95.34	8" X 8" TEE	507022.47	1352708.34
2+05.00	8" X 6" F.H. TEE	507067.20	1352706.04
3+07.05	1/8" H.B.	507070.20	1352805.15
3+14.31	8" X 4" TEE	507085.22	1352806.90
3+17.31	4" VALVE	507084.46	1352809.80
3+24.31	4" PLUG & BUTTRESS	507082.70	1352816.65
3+21.02	8" X 8" TEE	507095.60	1352791.27



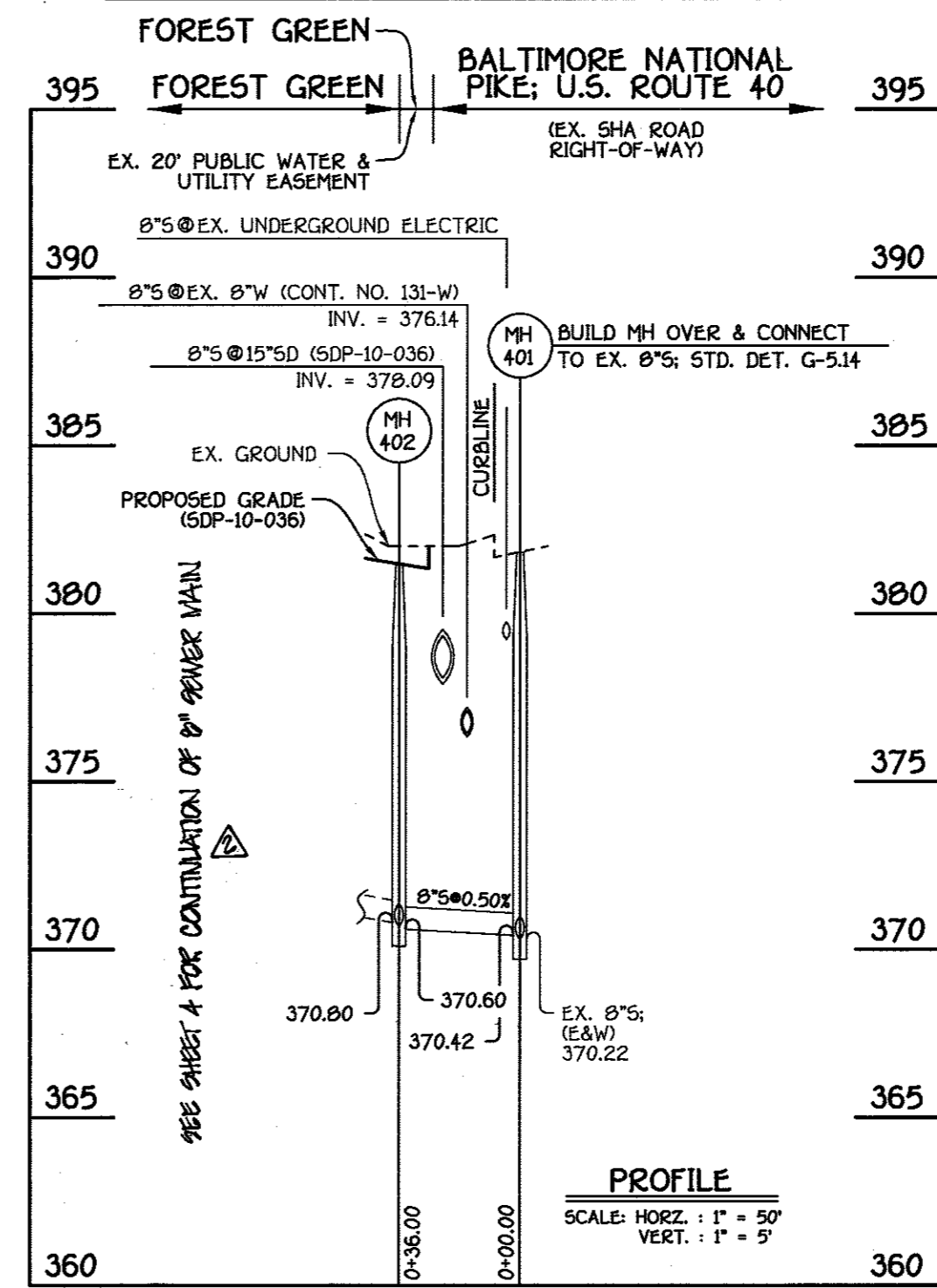
8" WATER MAIN: TO BUILDING 'A'

W.M. STA.	APPURTENANCE	NORTHING	EASTING
8" WATER MAIN TO BUILDING 'A'			
0+00.00	8" X 8" TEE	507087.00	1352530.62
0+03.00	8" VALVE	507087.62	1352533.60
0+10.00	8" PLUG & BUTTRESS	507087.00	1352540.57



8" WATER MAIN: TO BUILDING 'B'

W.M. STA.	APPURTENANCE	NORTHING	EASTING
8" WATER MAIN TO BUILDING 'B'			
0+00.00	8" X 8" TEE	507022.47	1352708.34
0+03.00	8" VALVE	507019.87	1352709.84
0+10.00	8" PLUG & BUTTRESS	507013.00	1352713.33



8" SEWER MAIN

W.M. STA.	APPURTENANCE	NORTHING	EASTING
8" WATER MAIN: FOREST GREEN			
0+00.00	8" X 8" TAPPING SLEEVE	506552.60	1352300.65
0+03.00	8" TAPPING VALVE	506554.40	1352301.72
3+25.00	8" X 6" F.H. TEE	506685.15	1352496.97
3+61.83	1/32" H.B.	506690.54	1352510.16
3+93.62	4" H.B.	506692.81	1352515.80
4+66.61	8" X 8" TEE	506694.51	1352522.33
5+42.26	8" X 6" F.H. TEE	507069.86	1352529.02
5+60.35	8" X 8" TEE	507087.80	1352530.61
7+33.65	8" TAPPING VALVE	507260.51	1352545.92
7+36.65	8" X 8" TAPPING SLEEVE	507263.49	1352546.19

NO.	NORTHING	EASTING	RIM ELEVATION
401	507262.04	1352737.94	301.05
402	507226.20	1352734.56	301.50

NOTE: SET M4 RIM FLUSH W/PROPOSED GRADE.

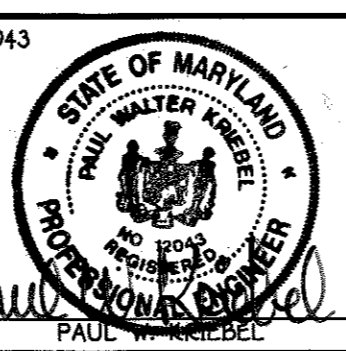
AS BUILTS
DATE: 3-10-10

CONTRACT NO. 24-4651-D
FOREST GREEN
LOTS A-1 & A-2
WATER AND SEWER MAIN EXTENSIONS
HOWARD COUNTY, MARYLAND

DEPARTMENT OF PUBLIC WORKS
HOWARD COUNTY, MARYLAND
S. C. CHAMBERS
CHIEF, BUREAU OF UTILITIES

DEPARTMENT OF PLANNING AND ZONING
HOWARD COUNTY, MARYLAND
M. J. MCGEE
CHIEF, DEVELOPMENT ENGINEERING DIVISION

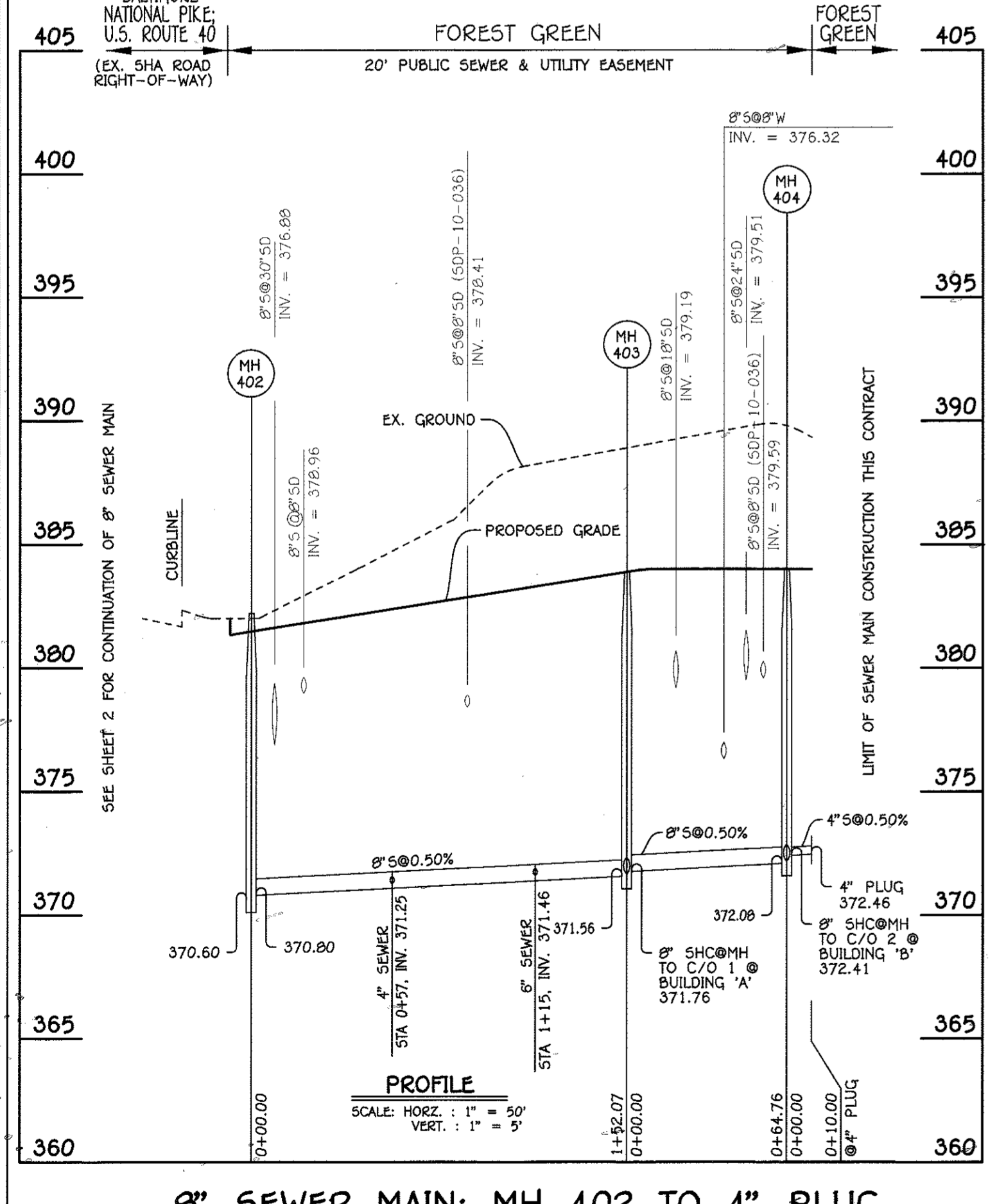
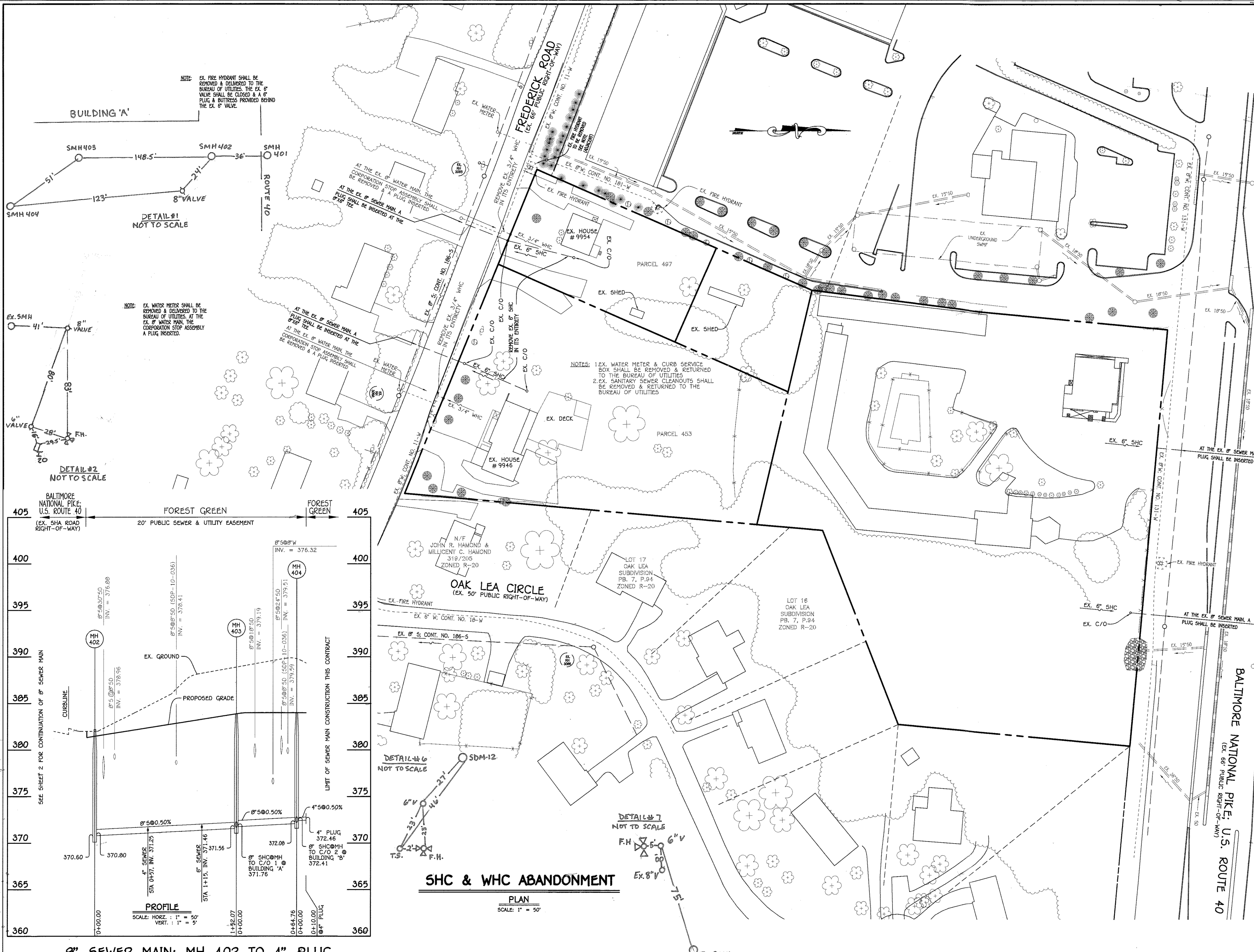
I HEREBY CERTIFY THAT THESE DOCUMENTS WERE PREPARED OR APPROVED BY ME, AND THAT I AM A DULY LICENSED PROFESSIONAL ENGINEER UNDER THE LAWS OF THE STATE OF MARYLAND.
FISHER, COLLINS & CARTER, INC.
CIVIL ENGINEERING CONSULTANTS & LAND SURVEYORS
CENTRAL SQUARE OFFICE - 1072 BALTIMORE NATIONAL PIKE
ELLSWORTH CITY, MARYLAND 21036
(410) 461-2825



DESIGNED BY: B.C.R.
DRAWN BY: B.C.R.
CHECKED BY: P.W.K.
DATE: DECEMBER, 2010
BY NO. REVISION DATE

WATER & SEWER MAINS
PROFILES & CHARTS
60' SCALE MAP NO. 24 BLOCK NO. 2
F.C.C. WORK ORDER NO. 06067
FILE NAME: WATER AND SEWER MAIN EXTENSION

FOREST GREEN
LOTS A-1 & A-2
CONTRACT NO. 24-4651-D
SECOND ELECTION DISTRICT
HOWARD COUNTY, MARYLAND
SCALE AS SHOWN
SHEET 3 OF 5



AS BUILTS

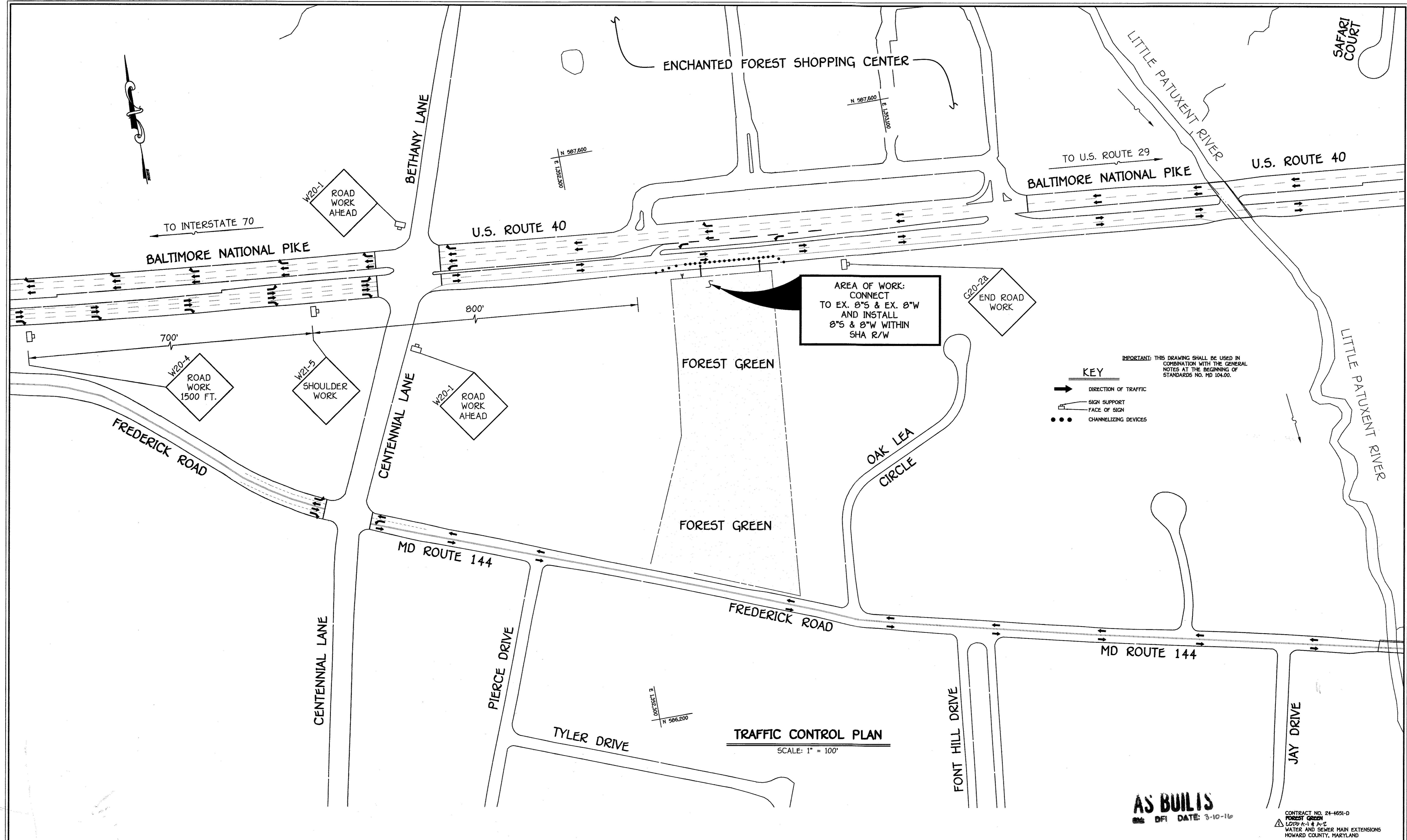
BY: DFI DATE: 3-10-16

CONTRACT NO. 24-4651-D
 FOREST GREEN
 LOTS A-1 & A-2
 WATER AND SEWER MAIN EXTENSIONS
 HOWARD COUNTY, MARYLAND

NOTE: THIS ORIGINAL CONSTRUCTION PLAN, SHEET 4 OF 5 SUPERSEDES THE WATER & SEWER MAIN CONSTRUCTION PLAN PREVIOUSLY APPROVED AND SIGNED BY THE DEPARTMENT OF PLANNING & ZONING ON JANUARY 12, 2011.

DEPARTMENT OF PUBLIC WORKS HOWARD COUNTY, MARYLAND Chief, Bureau of Utilities	DEPARTMENT OF PLANNING AND ZONING HOWARD COUNTY, MARYLAND Chief, Development Engineering Division	I HEREBY CERTIFY THAT THESE DOCUMENTS WERE PREPARED OR APPROVED BY ME AND THAT I AM A DULY LICENSED PROFESSIONAL ENGINEER UNDER THE LAWS OF THE STATE OF MARYLAND. LICENSE NO. 12043 EXPIRATION DATE 5/31/12. FISHER, COLLINS & CARTER, INC. CIVIL ENGINEERING CONSULTANTS & LAND SURVEYORS CENTENNIAL SQUARE OFFICE PARK - 15275 BALTIMORE NATIONAL PIKE ELIJAH CITY, MARYLAND 21042 (410) 481-2895	#12043 DESIGNED BY: B.C.R. DRAWN BY: B.C.R. CHECKED BY: P.W.K. DATE: MARCH, 2015	EX. SHC & EX. WHC ABANDONMENT PLAN, SEWER MAIN PROFILE & CHARTS 600' SCALE MAP NO. 24 BLOCK NO. 2 F.C.C. WORK ORDER NO. 06057 FILE NAME: WATER AND SEWER MAIN EXTENSION	FOREST GREEN LOTS A-1 & A-2 CONTRACT NO. 24-4651-D SECOND ELECTION DISTRICT HOWARD COUNTY, MARYLAND SCALE: AS SHOWN SHEET 4 OF 5
---	---	---	--	---	---

I:\2006\06057.dwg\Water & Sewer\Contract\Cadline 3 - February, 2015\06057 Water And Sewer\Cadline 3 - 2-9-15.dwg, 3/26/2015 9:16:22 AM



KEY

- ➔ DIRECTION OF TRAFFIC
- SIGN SUPPORT
- FACE OF SIGN
- CHANNELIZING DEVICES

IMPORTANT: THIS DRAWING SHALL BE USED IN COMBINATION WITH THE GENERAL NOTES AT THE BEGINNING OF STANDARDS NO. MD 104.00.

TRAFFIC CONTROL PLAN
SCALE: 1" = 100'

AS BUILT
DATE: 3-10-16

CONTRACT NO. 24-4651-D
FOREST GREEN
LOTS A-1 & A-2
WATER AND SEWER MAIN EXTENSIONS
HOWARD COUNTY, MARYLAND

DEPARTMENT OF PUBLIC WORKS
HOWARD COUNTY, MARYLAND

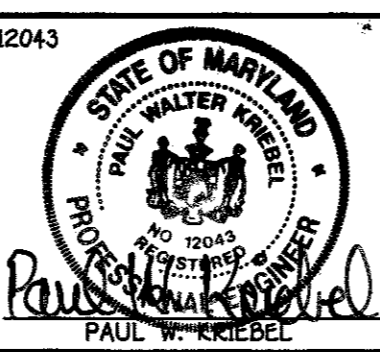
Steve Chen
DATE: 11/11/11
CHIEF, BUREAU OF UTILITIES

DEPARTMENT OF PLANNING AND ZONING
HOWARD COUNTY, MARYLAND

Paul W. Kriebel
DATE: 11/12/11
CHIEF, DEVELOPMENT ENGINEERING DIVISION

I HEREBY CERTIFY THAT THESE DOCUMENTS WERE PREPARED OR APPROVED BY ME, AND THAT I AM A DULY LICENSED PROFESSIONAL ENGINEER UNDER THE LAWS OF THE STATE OF MARYLAND. LICENSE NO. 12243 EXPIRATION DATE 5/7/12.

FISHER, COLLINS & CARTER, INC.
CIVIL ENGINEERING CONSULTANTS & LAND SURVEYORS
CENTENNIAL SQUARE OFFICE PARK - 10272 BALTIMORE NATIONAL PIKE
ELICOTT CITY, MARYLAND 21042
(410) 481-2222



DESIGNED BY:	B.C.R.
DRAWN BY:	B.C.R.
CHECKED BY:	P.W.K.
DATE:	DECEMBER, 2010
BY:	NO.
REVISION:	

TRAFFIC CONTROL PLAN	
60' SCALE MAP NO. 24	BLOCK NO. 2
F.C.C. WORK ORDER NO. 06057	
FILE NAME: WATER AND SEWER MAIN EXTENSION	

FOREST GREEN
LOTS A-1 & A-2
CONTRACT NO. 24-4651-D
SECOND ELECTION DISTRICT
HOWARD COUNTY, MARYLAND

SCALE AS SHOWN
SHEET 5 OF 5

I:\2006\06067.dwg, 06/06/11 11:09:20 AM 10:56:31 AM