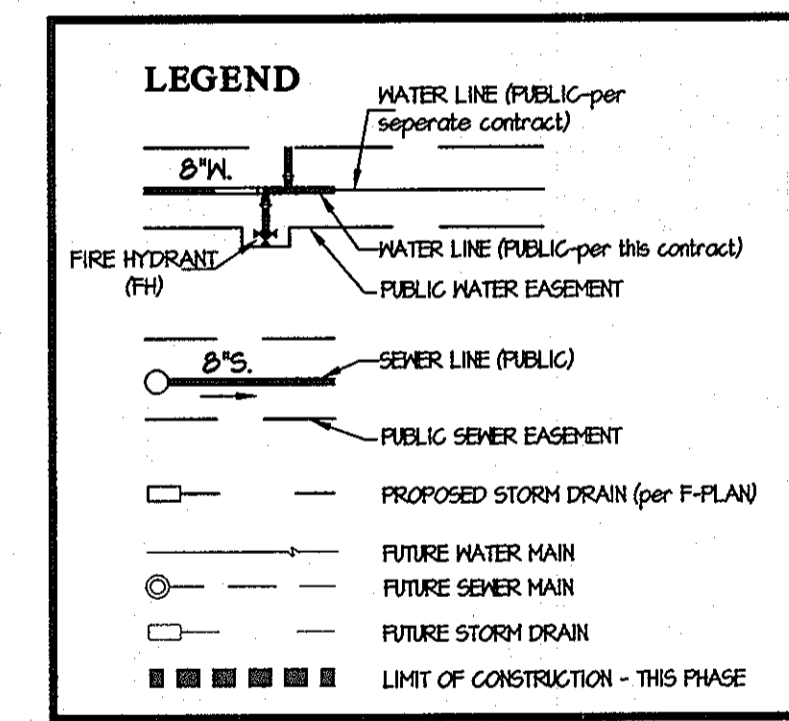
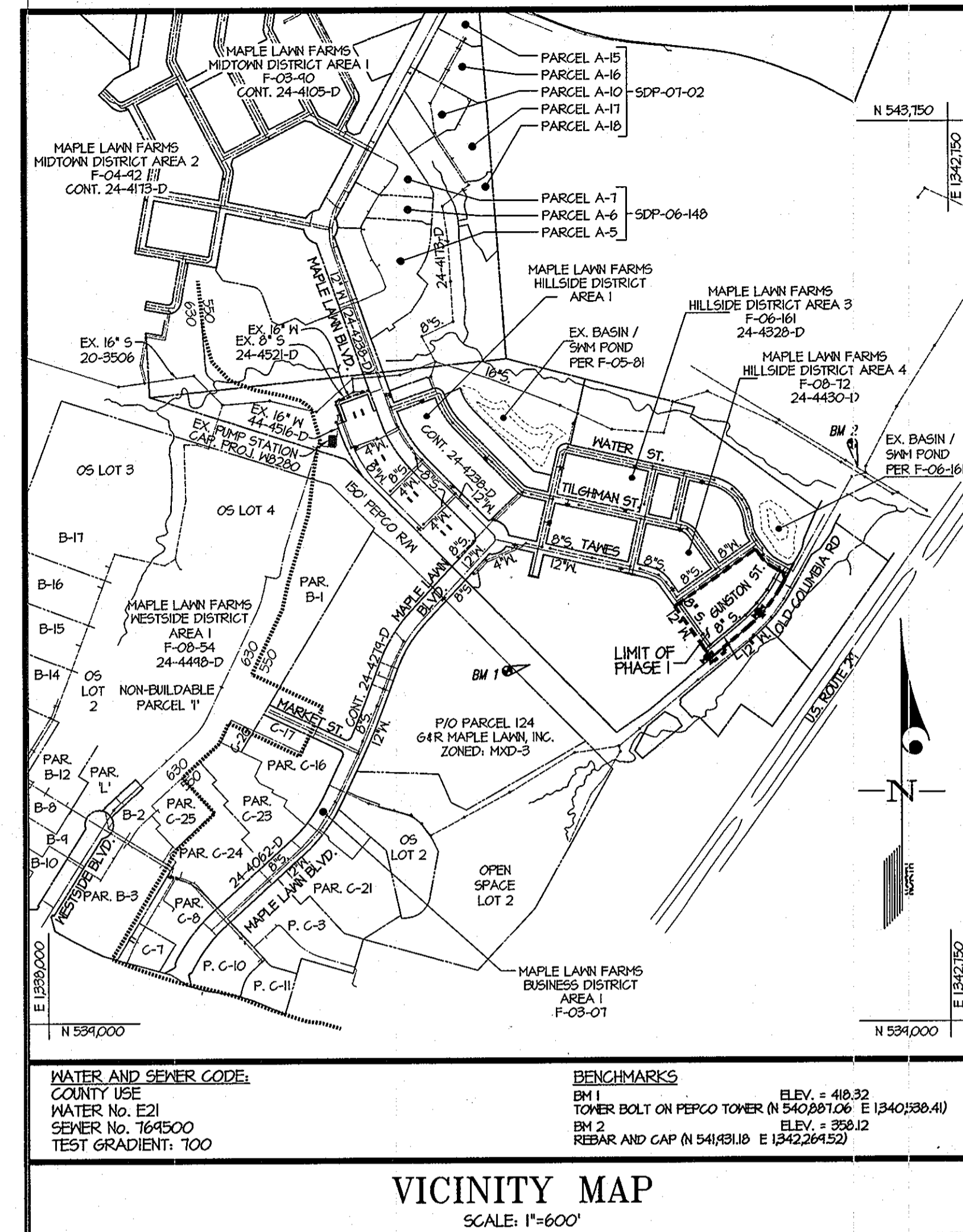


ITEMS	QUANTITIES		AS-BUILT		MANUFACTURER/SUPPLIER
	ESTIMATED		QUANTITIES	TYPE	
12" WATER MAIN	840 L.F.	809 L.F.	DIPLOSA	TYTON JOINT	GRiffin PIPE
8" WATER MAIN	60 L.F.	70 L.F.			
6" WATER MAIN	6 L.F.	25 L.F.			
1-1/2" WATER (HWC)	464 L.F.	660 L.F.	COPPER		HOWE II
12"x6" TEE	1 EA.	1 EA.	MJ TEE		SIGMA
12"x12" TEE	1 EA.	1 EA.			
12" VALVE	3 EA.	3 EA.	GATE VALVE		KENNEDY VALVE
12"x8" REDUCER	1 EA.	1 EA.	MJ REDUCER		SIGMA
12"x6" (FHT)	1 EA.	1 EA.	MJ HYDRANTTEE		SIGMA
FIRE HYDRANT	2 EA.	2 EA.	FIRE HYDRANT		KENNEDY VALVE
8"x8" TEE	0 EA.				
8"x6" TEE	0 EA.				
8" VALVE	0 EA.				
8" 1/8" HB	0 EA.				
8" 1/16" HB	0 EA.				
8" 1/32" HB	0 EA.				
8"x6" (FHT)	1 EA.	1 EA.	MJ HYDRANTTEE		SIGMA
12" 45° BEND	2 EA.	2 EA.	12" 45° BENDS		SIGMA
6" VALVE	0 EA.		GATE VALVE		KENNEDY VALVE
8" SEWER MAIN (P.V.C.)	820 L.F.	778 L.F.	SJR 35 PIPE		NORTH AMERICAN
8" SEWER MAIN (D.I.P.)	0 L.F.				
4" SEWER (SHC)	660 L.F.	805 L.F.	SJR 35 PIPE		NORTH AMERICAN
4" MANHOLES	5 EA.	5 EA.	PRECAST		FREDERICK PRECAST CONCRETE
8" SEWER MAIN (P.V.C.)	0 EA.				
8" SEWER MAIN (D.I.P.)	0 EA.				
4" SEWER (SHC)	0 EA.				

NAME OF UTILITY CONTRACTOR: GRAY & SON

SURVEY AND DRAFTING DIV. CHECKBOX: AS-BUILT DATE:



**SHEET INDEX**

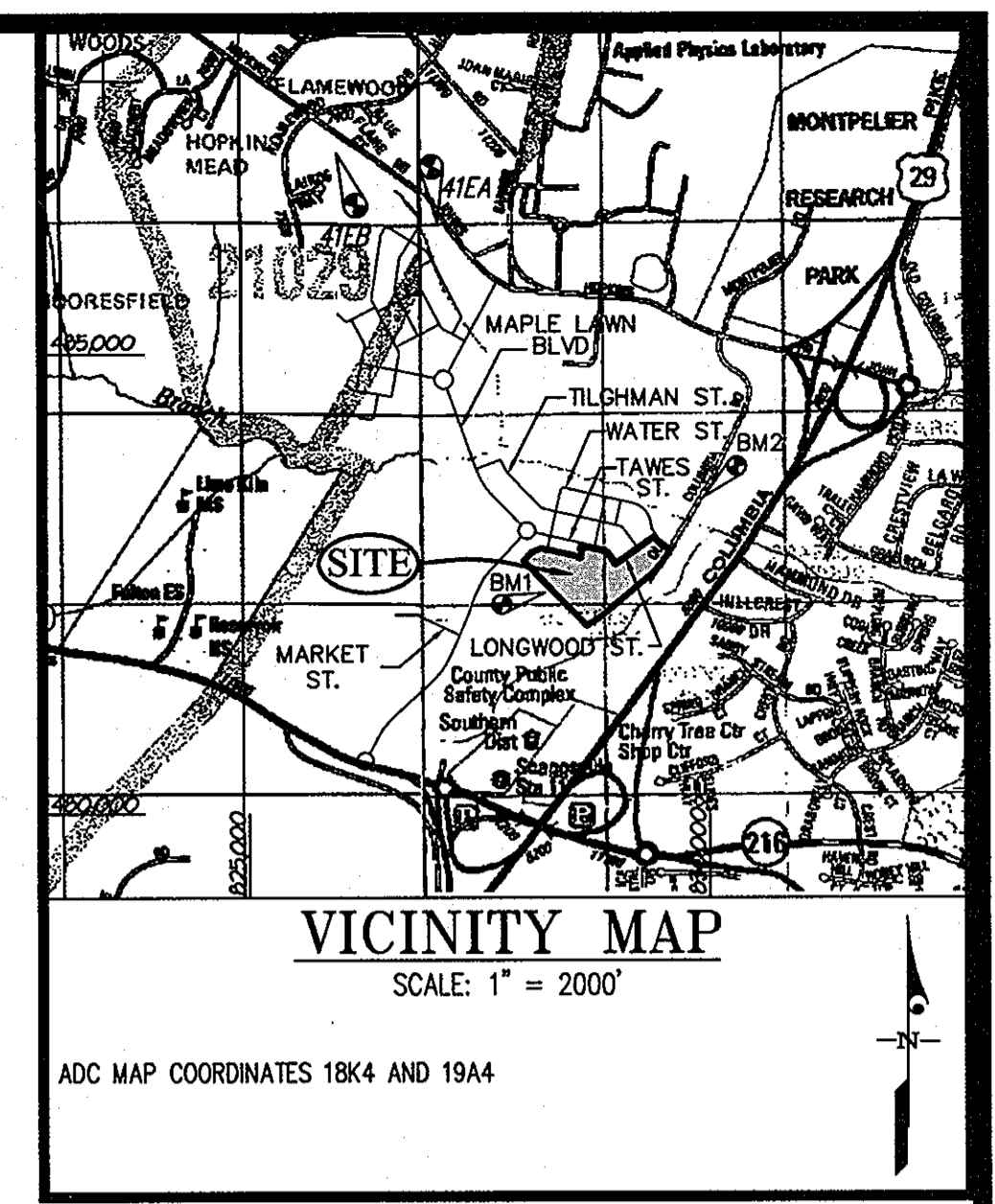
- COVER SHEET
- WATER & SEWER PLAN
- WATER & SEWER PROFILES
- WATER & SEWER DETAILS, MINIMUM CELLAR ELEVATIONS & AS-BUILT INFORMATION

PHC'S & SHC'S TO LOTS 376 THRU 379 AND 341-405 ARE EXISTING. THEY WERE INSTALLED UNDER CONT. # 24-4328-D AND 24-4430-D RESPECTIVELY.

**VICINITY MAP**  
SCALE: 1"=600'

TYPE OF BUILDING	RESIDENTIAL
NUMBER OF UNITS	30
NUMBER OF S.H.C.'s	24
NUMBER OF W.H.C.'s	28
AREA OF COMMERCIAL LOT/PARCEL	16.6231 Ac.
SEWER SHED	LITTLE PATUXENT
PUMPING STATION	LITTLE PATUXENT WRP

CONTRACT No. 24-4646-D  
**MAPLE LAWN FARMS**  
 HILLSIDE DISTRICT - AREA 5 (PHASE 1)  
 LOTS 376 THRU 405 AND  
 COMMON OPEN AREAS 488 AND 495  
 HOWARD COUNTY, MARYLAND  
 DEPARTMENT OF PUBLIC WORKS



- GENERAL NOTES**
- PART I**
- APPROXIMATE LOCATIONS OF EXISTING MAINS ARE SHOWN. THE CONTRACTOR SHALL TAKE ALL NECESSARY PRECAUTIONS TO PROTECT EXISTING MAINS AND MAINTAIN UNINTERRUPTED SERVICE. ANY DAMAGE INCURRED SHALL BE REPAIRED IMMEDIATELY TO THE SATISFACTION OF THE ENGINEER AT THE CONTRACTOR'S EXPENSE.
  - TOPOGRAPHIC FIELD SURVEYS WERE PERFORMED IN MAY 1941 BY 301. HORIZONTAL AND VERTICAL SURVEY CONTROLS. THE COORDINATES SHOWN ON THE DRAWINGS ARE BASED ON MARYLAND STATE REFERENCE SYSTEM NAD 83/91 AS PROJECTED BY HOWARD COUNTY GEODETIC CONTROL STATIONS NO. 41EA AND NO. 41EB.
  - ALL VERTICAL CONTROLS ARE BASED ON NAVD 88. VERTICAL CONTROLS PROVIDED ON DRAWINGS ARE STANDARD DICES ON CONCRETE MONUMENTS.
  - ALL PIPE ELEVATIONS SHOWN ARE INVERT ELEVATIONS UNLESS OTHERWISE NOTED ON THE PLANS.
  - CLEAR ALL UTILITIES BY A MINIMUM OF 12 INCHES. CLEAR ALL POLES BY 5'-0" MINIMUM OR TUNNEL AS REQUIRED UNLESS OTHERWISE NOTED. THE OWNER HAS CONTACTED THE UTILITY COMPANIES AND HAS MADE ARRANGEMENTS FOR BRACING OF POLES AS SHOWN ON THE DRAWINGS. IN THE EVENT THE CONTRACTOR'S WORK REQUIRES BRACING OF ADDITIONAL POLES, ANY COST INCURRED BY THE OWNER FOR THE BRACING OF ADDITIONAL POLES OR DAMAGES SHALL BE DEDUCTED FROM MONIES OWED THE CONTRACTOR. THE CONTRACTOR SHALL COORDINATE WITH THE UTILITY COMPANIES TO SCHEDULE THE BRACING OF THE POLES.
  - FOR DETAILS NOT SHOWN ON THE DRAWINGS, AND FOR MATERIALS AND CONSTRUCTION METHODS, USE HOWARD COUNTY DESIGN MANUAL, VOLUME IV, STANDARD SPECIFICATIONS AND DETAILS FOR CONSTRUCTION (LATEST EDITION). THE CONTRACTOR SHALL HAVE A COPY OF VOLUME IV ON THE JOB.
  - WHERE TEST PITS HAVE BEEN MADE ON EXISTING UTILITIES, THEY ARE NOTED BY THE SYMBOL (P) AT THE LOCATIONS OF THE TEST PITS. A NOTE OR NOTES CONTAINING THE RESULTS OF THE TEST PIT OR PITS IS INCLUDED ON THE DRAWINGS. EXISTING UTILITIES IN THE VICINITY OF THE PROPOSED WORK FOR WHICH TEST PITS HAVE NOT BEEN DUG SHALL BE LOCATED BY THE CONTRACTOR TWO WEEKS IN ADVANCE OF CONSTRUCTION OPERATIONS AT HIS OWN EXPENSE.
  - THE CONTRACTOR SHALL NOTIFY THE FOLLOWING UTILITY COMPANIES OR AGENCIES AT LEAST FIVE WORKING DAYS BEFORE STARTING WORK ON THESE PLANS.
 

AT&T	1-800-252-1133
BGE (CONTRACTOR SERVICES)	410-250-4620
BGE (UNDER GROUND DAMAGE CONTROL)	410-685-1400
BUREAU OF UTILITIES	410-313-4400
COLONIAL PIPELINE CO.	410-745-1340
MISS UTILITY	1-800-251-TTTT
STATE HIGHWAY ADMINISTRATION	410-531-5533
VERIZON	1-800-743-0033 / 410-224-4210
  - TREES AND SHRUBS ARE TO BE PROTECTED FROM DAMAGE TO THE MAXIMUM EXTENT. TREES AND SHRUBS LOCATED WITHIN THE CONSTRUCTION AREA STRIP ARE NOT TO BE REMOVED OR DAMAGED BY THE CONTRACTOR.
  - THE CONTRACTOR SHALL REMOVE TREES, STUMPS AND ROOTS ALONG THE LINE OF EXCAVATION. PAYMENT FOR SUCH REMOVAL SHALL BE INCLUDED IN THE UNIT PRICE BID FOR CONSTRUCTION OF THE MAIN.
  - THE CONTRACTOR SHALL NOTIFY THE BUREAU OF HIGHWAYS, HOWARD COUNTY, AT (410)-313-7450 AT LEAST FIVE WORKING DAYS BEFORE OPEN CUTTING OR BORING/JACKING OF ANY COUNTY ROAD FOR LAYING WATER/SEWER MAINS OR HOUSE CONNECTIONS. THE APPROVAL OF THESE DRAWINGS WILL CONSTITUTE COMPLIANCE WITH DPM REQUIREMENTS PER SECTION 10.14(a) OF THE HOWARD COUNTY CODE.
- PART II - WATER**
- ALL MAINS SHALL BE D.I.P. CLASS 54 UNLESS OTHERWISE NOTED.
  - TOPS OF ALL WATER MAINS SHALL HAVE A MINIMUM OF 3'-6" OF COVER UNLESS OTHERWISE NOTED.
  - VALVES ADJACENT TO TEES SHALL BE STRAPPED TO TEES.
  - ALL FITTINGS SHALL BE BUTTRESSED OR ANCHORED WITH CONCRETE IN ACCORDANCE WITH STANDARD DETAILS UNLESS OTHERWISE PROVIDED FOR ON THE DRAWINGS.
  - FIRE HYDRANTS SHALL BE SET TO THE BURY LINE ELEVATIONS SHOWN ON THE DRAWINGS. ALL FIRE HYDRANTS SHALL BE RESTRAINED AND BUTTRESSED OR ANCHORED WITH CONCRETE IN ACCORDANCE WITH THE STANDARD DETAILS. THE SOIL AROUND THE FIRE HYDRANT SHALL BE COMPACTED IN ACCORDANCE WITH SECTION 1000 AND 1005 OF THE STANDARD SPECIFICATIONS.
  - THE CONTRACTOR SHALL NOT OPERATE ANY WATER MAIN VALVES ON THE EXISTING WATER SYSTEM.
  - FIRE SPRINKLER SYSTEMS FOR ALL SINGLE FAMILY DWELLINGS SHALL HAVE A MINIMUM OF A 1/2" CONNECTION WITH A 1" METER.
  - ALL WATER HOUSE CONNECTIONS SHALL BE 1/2" WITH A 1" METER.
- PART III - SEWER**
- ALL SEWER MAINS SHALL BE D.I.P. OR P.V.C. UNLESS OTHERWISE NOTED.
  - ALL MANHOLES SHALL BE 4'-0" INSIDE DIAMETER UNLESS OTHERWISE NOTED.
  - FORCE MAINS SHALL BE D.I.P. ONLY.
  - MANHOLES SHOWN WITH THE 12" AND 16" MALLS ARE FOR BRICK MANHOLES ONLY.
  - MANHOLES DESIGNATED W.T. IN PLAN AND PROFILE SHALL HAVE WATERTIGHT FRAME AND COVER, STANDARD DETAIL 65.52. WHERE WATERTIGHT MANHOLE FRAMES AND COVERS ARE USED, SET TOP OF FRAME 1'-6" ABOVE FINISHED GRADE UNLESS OTHERWISE NOTED ON THE DRAWINGS.
  - HOUSE(S) WITH THE SYMBOL "C.N.S." INDICATES THE CELLAR CANNOT BE SERVED.
  - ALL SEWER HOUSE CONNECTIONS SHALL BE 4".

SEDIMENT CONTROL MEASURES WILL BE IMPLEMENTED IN ACCORDANCE WITH F 10-61 AND SECTION 308 OF THE SPECIFICATIONS AT FINAL ROAD PLAN STAGE.

THIS DEVELOPMENT PLAN IS APPROVED FOR SOIL EROSION AND SEDIMENT CONTROL BY THE HOWARD COUNTY DEPARTMENT OF PUBLIC WORKS.

APPROVED: *John K. Robertson* 9/23/10  
 HOWARD S.C.D. DATE

DEPARTMENT OF PUBLIC WORKS  
 HOWARD COUNTY, MARYLAND

*Shane C. Lem* 9/23/10  
 CHIEF, BUREAU OF UTILITIES DATE

DEPARTMENT OF PLANNING AND ZONING  
 HOWARD COUNTY, MARYLAND

*John P. ...* 9/23/10  
 CHIEF, DEVELOPMENT ENGINEERING DIVISION DATE

GLWGUTSCHICK LITTLE & WEBER, P.A.  
 CIVIL ENGINEERS, LAND SURVEYORS, LAND PLANNERS, LANDSCAPE ARCHITECTS  
 3909 NATIONAL DRIVE - SUITE 250 - BURTONSVILLE OFFICE PARK  
 BURTONSVILLE, MARYLAND 20886  
 TEL: 301-421-4024 BAL: 410-880-1820 DC/VA: 301-988-2524 FAX: 301-421-4186

DATE AUGUST 2010  
 G.L.W. No. 07001  
 EXP. DATE: MAY 26, 2012

PROFESSIONAL CERTIFICATION

I HEREBY CERTIFY THAT THESE PLANS WERE PREPARED OR APPROVED BY ME AND THAT I AM A DULY LICENSED PROFESSIONAL ENGINEER UNDER THE LAWS OF THE STATE OF MARYLAND, LICENSE NO. 12975

8-11-10

COVER SHEET

600' SCALE MAP NO. 41 BLOCK NO. 22

AS-BUILT 1-28-11

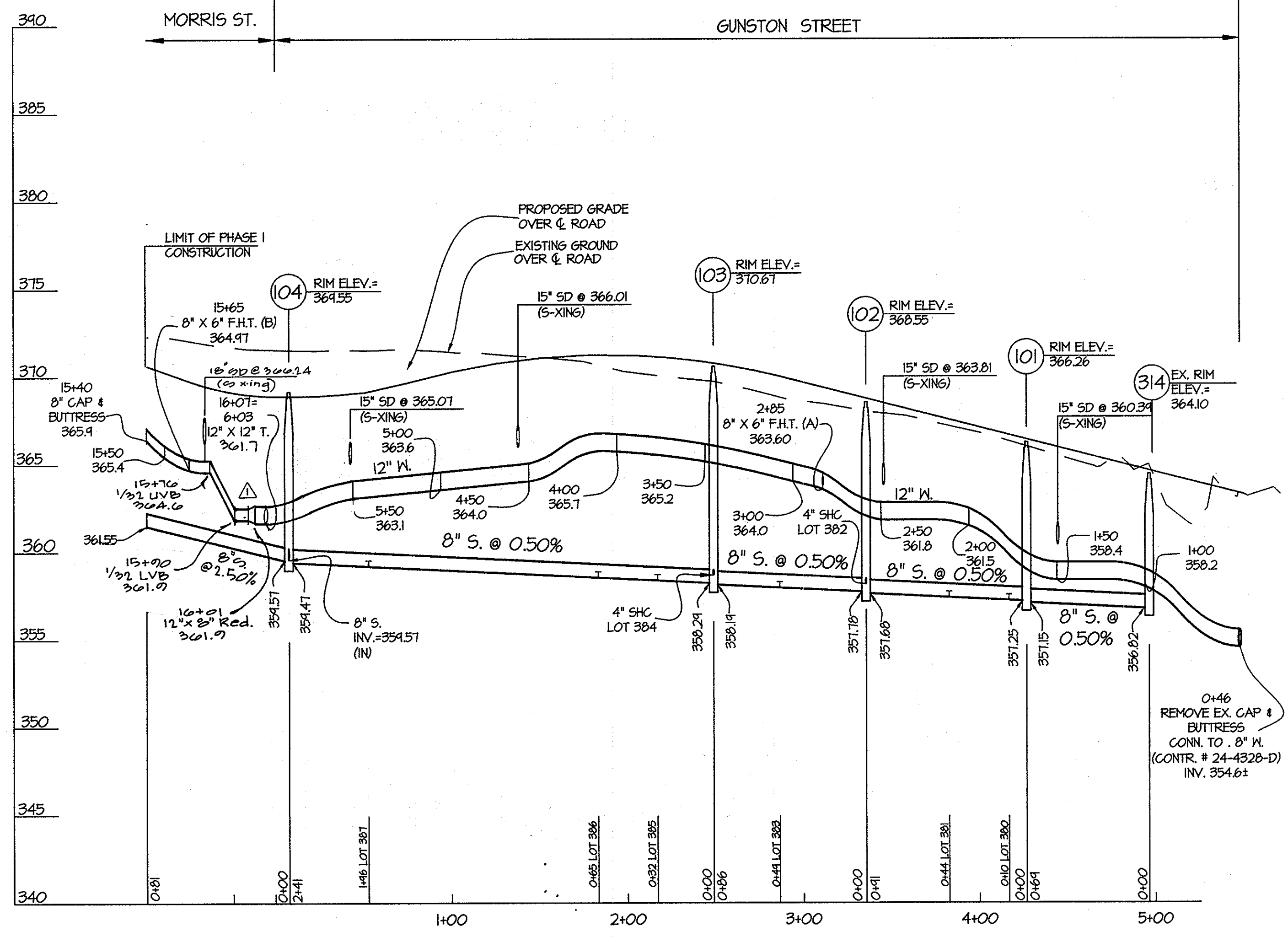
PREPARED FOR:  
 G&R MAPLE LAWN, INC.  
 SUITE 300 WOODHOLME CENTER  
 1829 REISTERSTOWN ROAD  
 BALTIMORE, MD 21208  
 ATTN: MARK BENNETT  
 410-484-8400

**MAPLE LAWN FARMS**  
 CONTRACT No. 24-4646-D  
 HILLSIDE DISTRICT - AREA 5 (PHASE 1)  
 LOTS 376 THRU 405 AND  
 COMMON OPEN AREAS 488 AND 495  
 HOWARD COUNTY, MARYLAND  
 ELECTION DISTRICT NO. 5

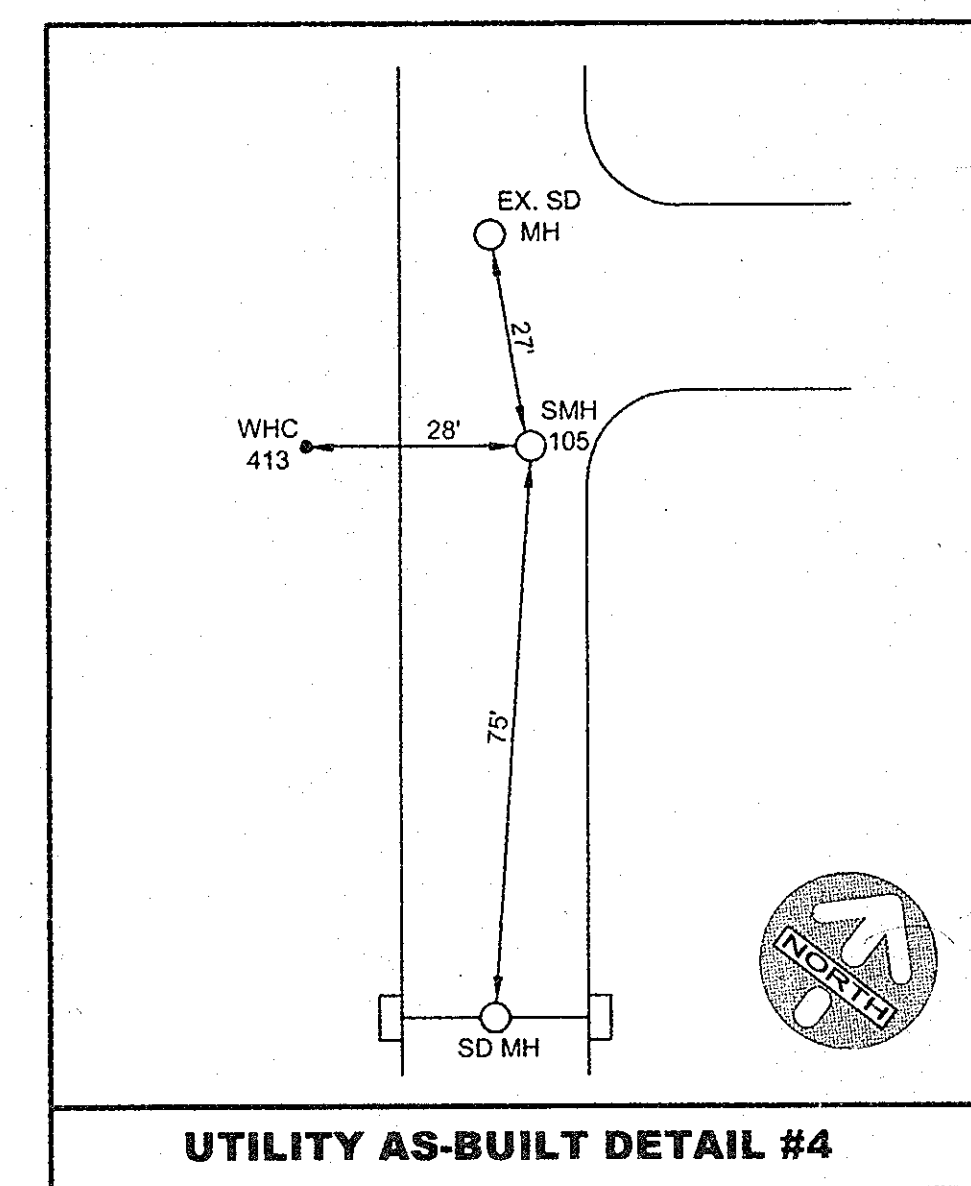
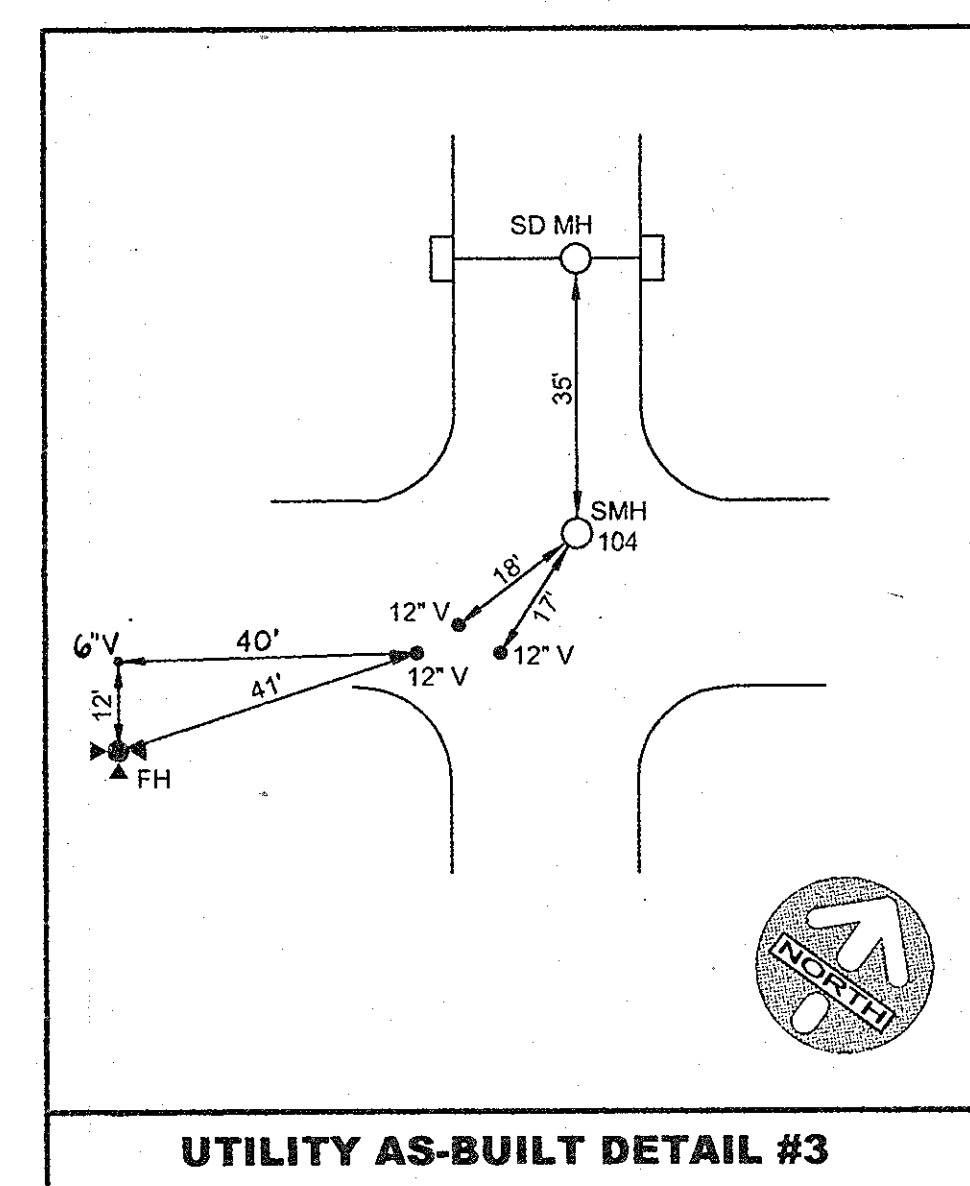
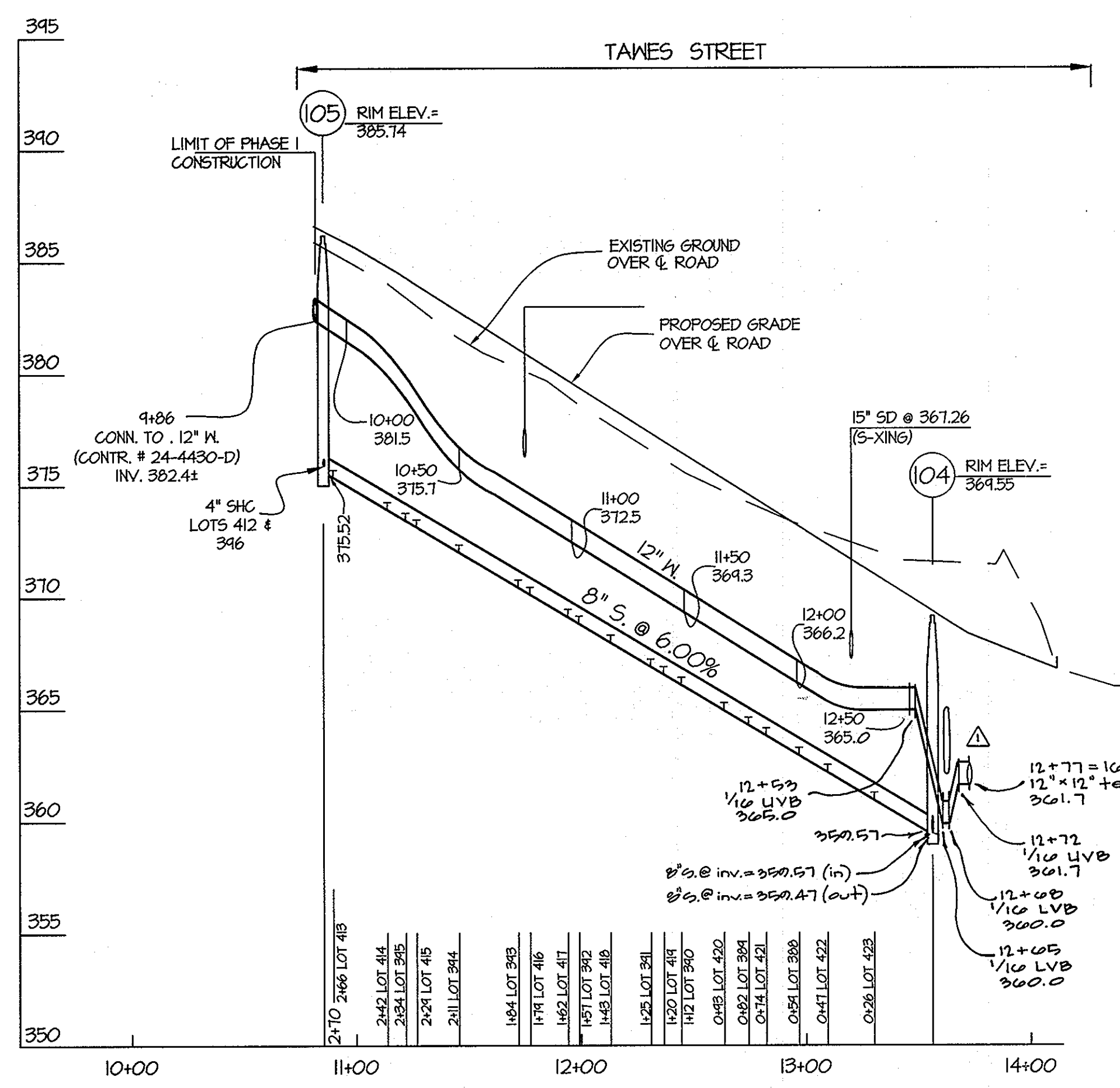
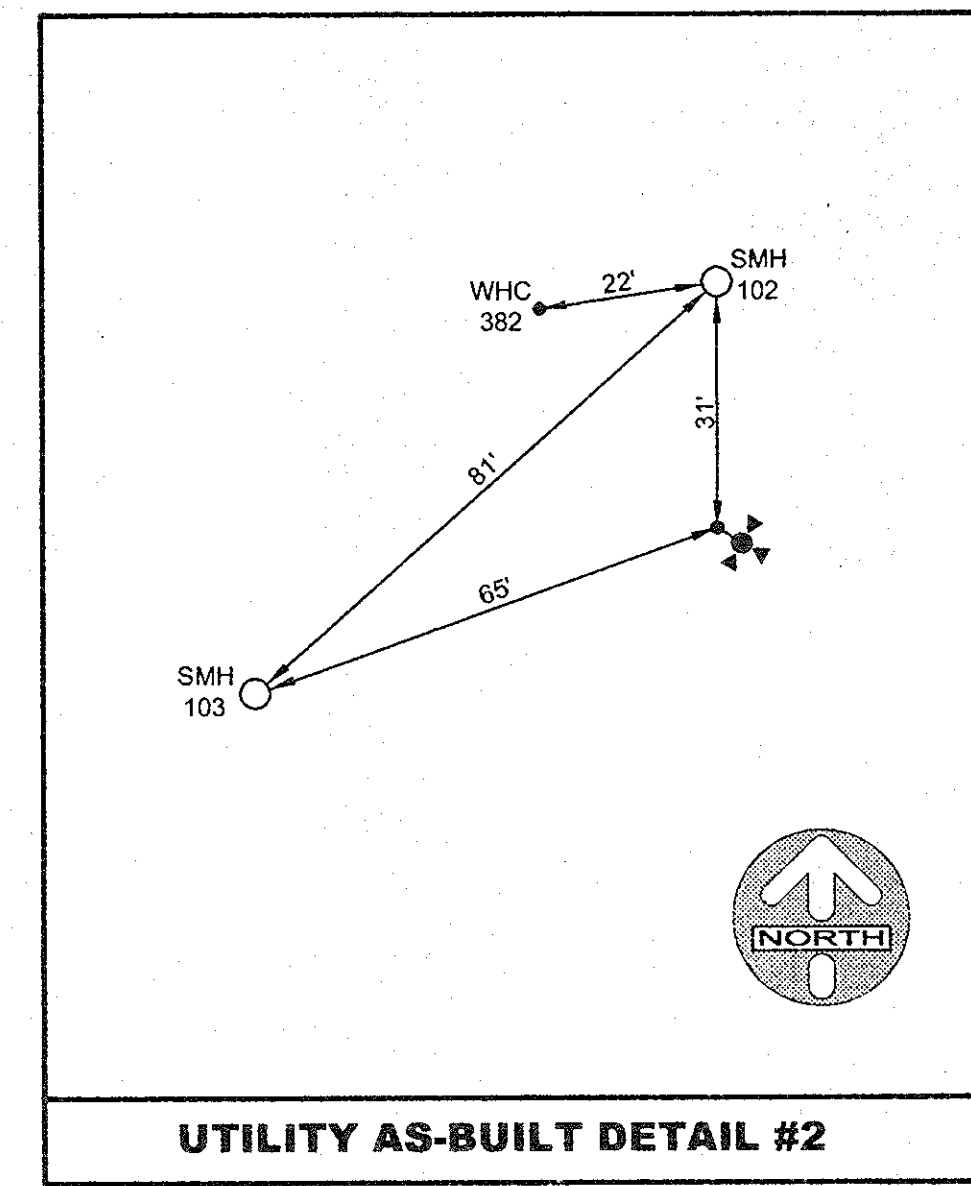
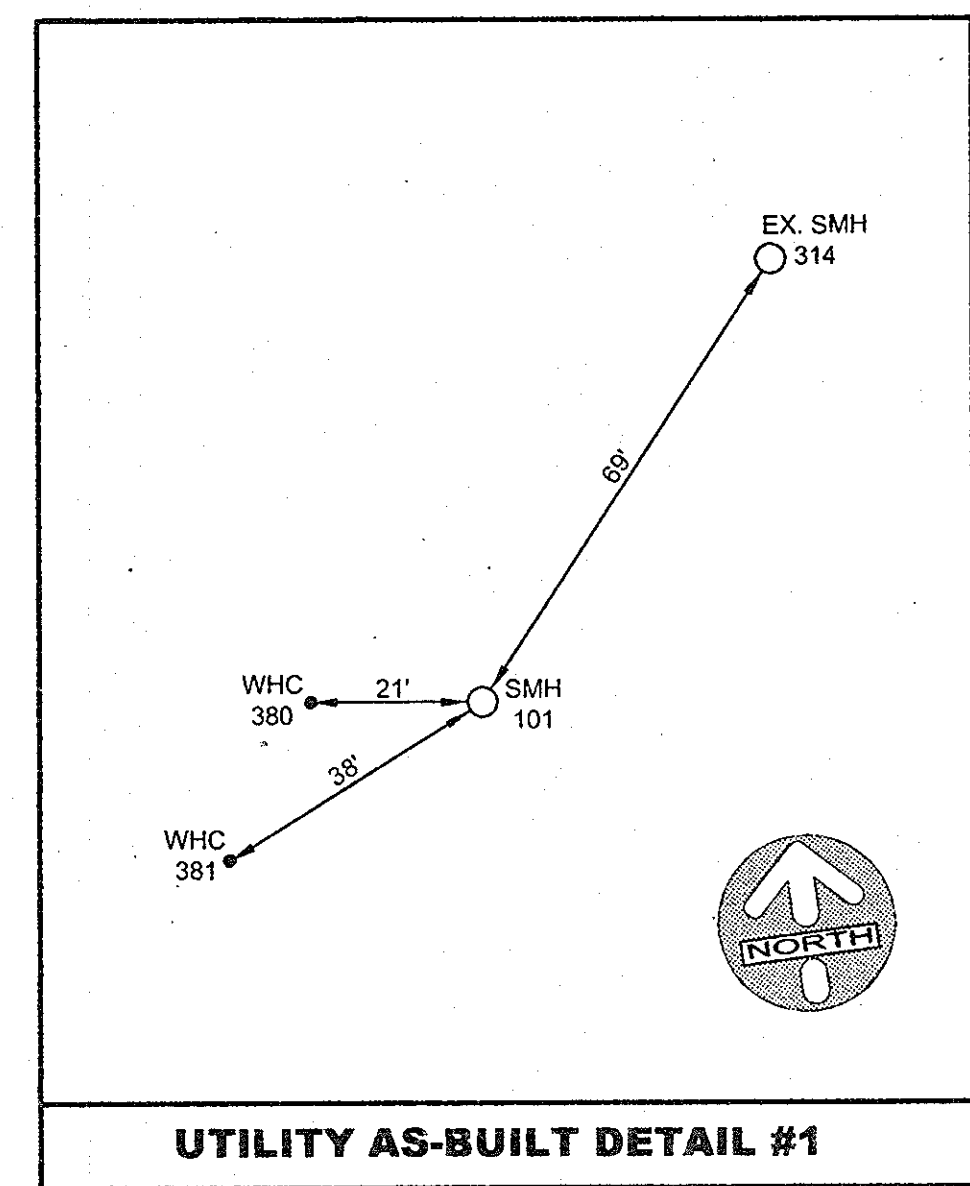
SCALE AS SHOWN  
 SHEET 1 OF 4

L:\CAD\DRAWINGS\07001\07001\PHASE 1\07001\CS-PH1.dwg  
 PLOTTED 8/15/2010 10:12 PM, LAST SAVED 8/15/2010 8:05 AM, PLOTTED BY: Doug Vonde By





FOR WATER AND SEWER PLAN VIEW SEE SHEET 2 OF 4.



A5-BUILT 1-28-11

PREPARED FOR:  
G&R MAPLE LAWN, INC.  
SUITE 300 WOODHOLME CENTER  
1829 REISTERSTOWN ROAD  
BALTIMORE, MD 21208  
ATTN: MARK BENNETT  
410-484-8400

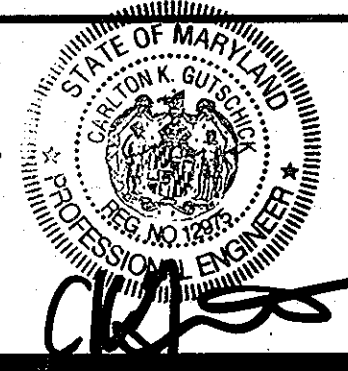
DEPARTMENT OF  
PUBLIC WORKS  
HOWARD COUNTY, MARYLAND  
*Shawn C. Lewis*  
CHIEF, BUREAU OF UTILITIES

DEPARTMENT OF  
PLANNING AND ZONING  
HOWARD COUNTY, MARYLAND  
*Mark Bennett*  
CHIEF, DEVELOPMENT ENGINEERING DIVISION

GLW GUTSCHICK LITTLE & WEBER, P.A.  
CIVIL ENGINEERS, LAND SURVEYORS, LAND PLANNERS, LANDSCAPE ARCHITECTS  
3909 NATIONAL DRIVE - SUITE 250 - BURTONSVILLE OFFICE PARK  
BURTONSVILLE, MARYLAND 20866  
TEL: 301-421-4024 BAL: 410-880-1820 DC/VA: 301-988-2524 FAX: 301-421-4186

DATE  
AUGUST  
2010  
G.L.W. No.  
07001

PROFESSIONAL CERTIFICATION  
I HEREBY CERTIFY THAT THESE PLANS  
WERE PREPARED OR APPROVED BY ME,  
AND THAT I AM A DULY LICENSED  
PROFESSIONAL ENGINEER UNDER THE  
LAWS OF THE STATE OF MARYLAND,  
LICENSE NO. 12375  
EXP. DATE: MAY 26, 2012



BY	NO	REVISION	DATE

WATER & SEWER EXTENSION  
PROFILES  
600' SCALE MAP NO. 41  
BLOCK NO. 22

MAPLE LAWN FARMS  
CONTRACT No. 24-4646-D  
HILLSIDE DISTRICT - AREA 5 (PHASE 1)  
LOTS 376 THRU 405 AND  
COMMON OPEN AREAS 488 AND 495  
HOWARD COUNTY, MARYLAND  
ELECTION DISTRICT No. 5  
SCALE  
AS SHOWN  
SHEET  
3 OF 4

1. CHECK FOR CONFLICTS WITH EXISTING UTILITIES AND STRUCTURES. 2. VERIFY ALL DIMENSIONS AND ELEVATIONS. 3. VERIFY ALL PERMITS AND APPROVALS. 4. VERIFY ALL MATERIALS AND METHODS. 5. VERIFY ALL CONSTRUCTION SCHEDULES. 6. VERIFY ALL CONTRACT DOCUMENTS. 7. VERIFY ALL AS-BUILT RECORDS. 8. VERIFY ALL FINAL INSPECTIONS. 9. VERIFY ALL FINAL REPORTS. 10. VERIFY ALL FINAL APPROVALS.

