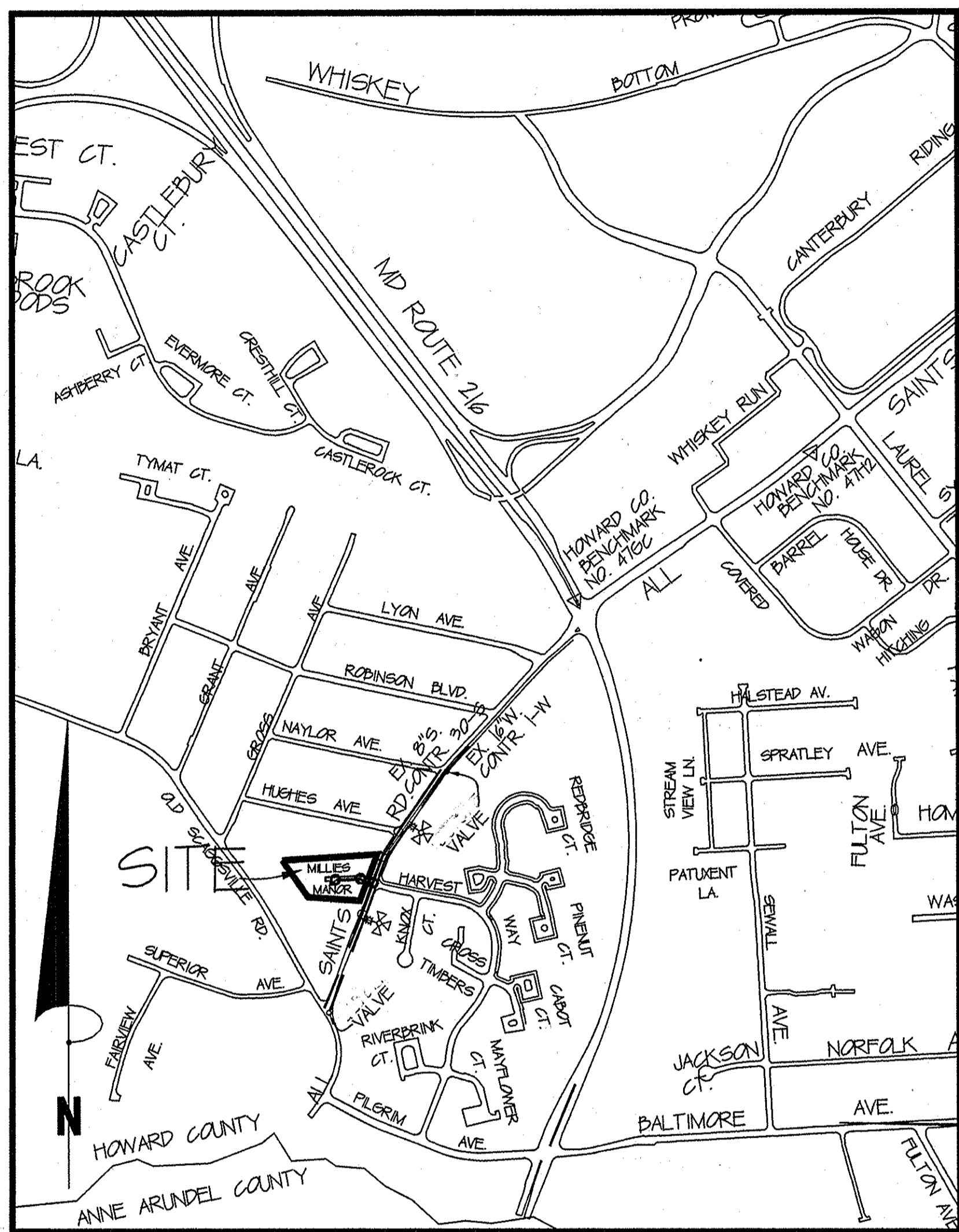
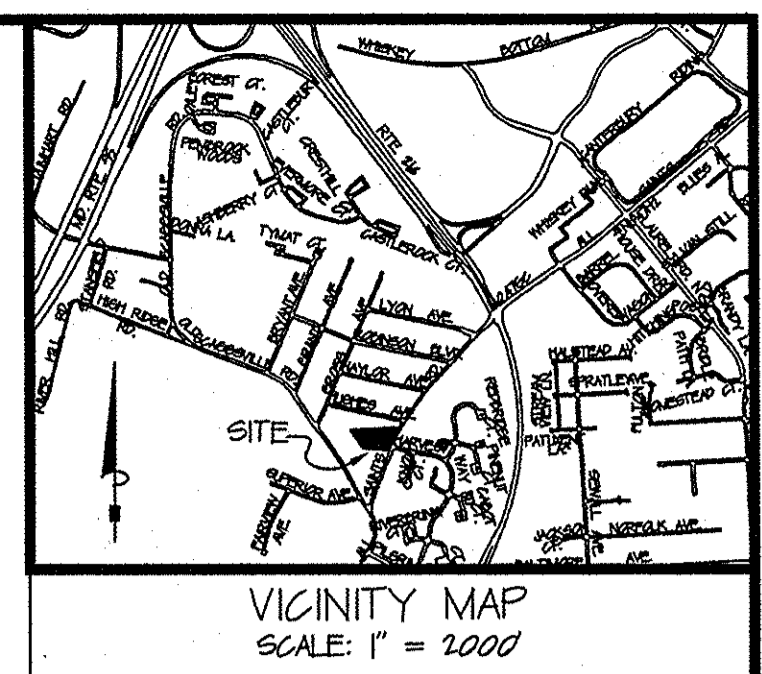


QUANTITIES				
ITEMS	QUANTITIES ESTIMATED	AS-BUILT		
		QUANTITIES	TYPE	MANUFACTURER/SUPPLIER
8" WATER MAIN	247 LF	229 LF	CLS4 DIP	GRIFFIN PIPE/BELAIR ROAD SUPPLY
6" WATER		6 LF	CLS4 DIP	GRIFFIN PIPE/BELAIR ROAD SUPPLY
16" x 8" TAPPING SLEEVE & VALVE	1 EA.	1	RSDR GATE	MUELLER CO./BELAIR ROAD SUPPLY
8" CAP & BUTTRESS W/ 1 1/2" DRAIN	1 EA.	1	4.0"	MUELLER CO./BELAIR ROAD SUPPLY
FIRE HYDRANT	1 EA.	1	4.0"	MUELLER CO./BELAIR ROAD SUPPLY
1" WVC	265 LF	249 LF	COPPER	CAMBRIDGE/LE/BELAIR ROAD SUPPLY
8" VALVE	1 EA.	1	RSDR GATE	MUELLER CO./BELAIR ROAD SUPPLY
8" SEWER MAIN	228 LF	222 LF	PVC SDR-35	JM EAGLE/BELAIR ROAD SUPPLY
MANHOLE	3 EA.	3	PRECAST	FREDERICK PRECAST CONCRETE
4" SHC	275 LF	283.5 LF	PVC	JM EAGLE/BELAIR ROAD SUPPLY
TYPE IV DROP CAN.	2 EA.	1	PVC SDR-35	PLASTIC TRENDS/BELAIR ROAD SUPPLY
16" x 8" TAPPING SLEEVE	1 EA.	1	STAINLESS STEEL	OMAC INDUSTRIES/BELAIR ROAD SUPPLY
TEST PITS	12 CY.			
6" VALVE		1	RSDR GATE	MUELLER CO./BELAIR ROAD SUPPLY
PAVING REPLACEMENT	19 SY.	30.2 S.Y.		LAUREL ASPHALT
MAINTENANCE OF TRAFFIC		LS.		F.L. COOKE
8" CAP & BUTTRESS	1 EA.	1	D.I.	SIGMA CORP. UTILITIES UNLIMITED
W/ 1 1/2" DRAIN	1 EA.	1	B-25000	MUELLER CO./BELAIR ROAD SUPPLY
NAME OF UTILITY CONTRACTOR: UTILITIES UNLIMITED				
SURVEY AND DRAFTING DIVISION AS-BUILT DATE: MAY 4, 2011				



- GENERAL NOTES:**
- APPROXIMATE LOCATION OF EXISTING MAINS ARE SHOWN. THE CONTRACTOR SHALL TAKE ALL NECESSARY PRECAUTIONS TO PROTECT EXISTING MAINS AND SERVICES AND MAINTAIN UNINTERRUPTED SERVICE. ANY DAMAGE INCURRED SHALL BE REPAIRED IMMEDIATELY TO THE SATISFACTION OF THE ENGINEER AT THE CONTRACTOR'S EXPENSE.
 - TOPOGRAPHIC FIELD SURVEYS WERE PERFORMED BY LDE, INC. ON OR ABOUT 05/08 AND VERIFIED BY CHARLES R. CROCKEN & ASSOCIATES, INC.
 - ALL HORIZONTAL CONTROLS ARE BASED ON MARYLAND STATE REFERENCE SYSTEM NAD 83/91 AS PROJECTED BY HOWARD COUNTY GEODETIC CONTROL STATIONS:
 NO. 4741 N 537064423 E 1694493715 ELEV. 25632
 NO. 4762 N 509957932 E 1694232913 ELEV. 224914
 ALL VERTICAL CONTROLS ARE BASED ON NAVD 88. VERTICAL CONTROLS PROVIDED ON THE DRAWINGS ARE HOWARD COUNTY GEODETIC CONTROL STATION 4762, CONCRETE MONUMENT.
 - ALL PIPE ELEVATIONS SHOWN ARE INVERT ELEVATIONS UNLESS OTHERWISE NOTED ON THE PLANS.
 - CLEAR ALL UTILITIES BY MINIMUM OF 12 INCHES. CLEAR ALL POLES BY 8'-0" MINIMUM OR TUNNEL AS REQUIRED UNLESS OTHERWISE NOTED. THE OWNER HAS CONTACTED THE UTILITY COMPANIES AND HAS MADE ARRANGEMENTS FOR BRACING OF POLES AS SHOWN ON THE DRAWINGS. IN THE EVENT THE CONTRACTOR'S WORK REQUIRES THE BRACING OF ADDITIONAL POLES, ANY COST INCURRED BY THE OWNER FOR BRACING OF ADDITIONAL POLES OR DAMAGES SHALL BE DEDUCTED FROM MONEY OWED THE CONTRACTOR. THE CONTRACTOR SHALL COORDINATE WITH THE UTILITY COMPANIES TO SCHEDULE THE BRACING OF THE POLES.
 - FOR DETAILS NOT SHOWN ON THE DRAWINGS AND FOR MATERIALS AND CONSTRUCTION METHODS USE HOWARD COUNTY DESIGN MANUAL VOLUME IV, STANDARD SPECIFICATIONS AND DETAILS FOR CONSTRUCTION (LATEST EDITION). THE CONTRACTOR SHALL HAVE A COPY OF VOLUME IV ON THE JOB.
 - WHERE TEST PITS HAVE BEEN MADE ON EXISTING UTILITIES THEY ARE NOTED BY THE SYMBOLS AT THE LOCATION OF THE TEST PIT. A NOTE OR NOTES CONTAINING THE RESULTS OF THE TEST PIT OR PITS ARE INCLUDED ON THE DRAWINGS. EXISTING UTILITIES IN THE VICINITY OF THE PROPOSED WORK FOR WHICH TEST PITS HAVE NOT BEEN DUG SHALL BE LOCATED BY THE CONTRACTOR TWO WEEKS IN ADVANCE OF CONSTRUCTION OPERATIONS AT HIS OWN EXPENSE.
 - CONTRACTORS SHALL NOTIFY THE FOLLOWING UTILITY COMPANIES OR AGENCIES AT LEAST FIVE WORKING DAYS BEFORE STARTING WORK ON THESE PLANS:
 AT&T 1-800-281-1933
 BGE CO. CONTRACTORS SERVICES 410-952-4610
 BGE CO. UNDER GROUND DAMAGE CONTROL 410-781-2948
 BUREAU OF UTILITIES 410-315-4020
 COLONIAL PIPELINE CO. 410-795-1920
 MISS UTILITY 1-800-281-7777
 STATE HIGHWAY ADMINISTRATION 410-315-4520
 VERIZON 1-800-749-0299/410-224-9210
 - TREES AND SHRUBS ARE TO BE PROTECTED FROM DAMAGE TO MAXIMUM EXTENT. TREES AND SHRUBS LOCATED WITHIN THE CONSTRUCTION STRIP ARE NOT TO BE REMOVED OR DAMAGED BY THE CONTRACTOR.
 - CONTRACTOR SHALL REMOVE TREES, STUMPS AND ROOTS ALONG LINE OF EXCAVATION. PAYMENT FOR SUCH REMOVAL SHALL BE INCLUDED IN THE UNIT PRICE BID FOR CONSTRUCTION OF MAIN.
 - THE CONTRACTOR SHALL NOTIFY THE BUREAU OF HIGHWAYS, HOWARD COUNTY, AT 410-315-4162 AT LEAST FIVE (5) WORKING DAYS BEFORE ANY OPEN CUT OF ANY COUNTY ROAD OR BORING/JACKING OPERATION IN COUNTY ROADS FOR LAYING WATER/SEWER MAINS OR HOUSE CONNECTIONS. THE APPROVAL OF THESE DRAWINGS WILL CONSTITUTE COMPLIANCE WITH PDW REQUIREMENTS PER SECTION 19.14(a) OF THE HOWARD COUNTY CODE.
 - ALL WATER MAINS TO BE DIP, CLASS 54 UNLESS OTHERWISE NOTED.
 - TAPS OF ALL WATER MAINS TO HAVE A MINIMUM OF 2'-6" COVER UNLESS OTHERWISE NOTED.
 - VALVES ADJACENT TO TEES SHALL BE STRAPPED TO TEES.
 - ALL FITTINGS SHALL BE BUTTRESSED OR ANCHORED WITH CONCRETE IN ACCORDANCE WITH THE STANDARD DETAILS UNLESS OTHERWISE PROVIDED FOR ON THE DRAWINGS.
 - FIRE HYDRANTS SHALL BE SET TO THE BURY LINE ELEVATIONS SHOWN ON THE DRAWINGS. ALL FIRE HYDRANTS SHALL BE INSTALLED IN ACCORDANCE WITH STANDARD DETAILS. SOIL AROUND THE FIRE HYDRANT SHALL BE COMPACTED IN ACCORDANCE WITH SECTION 100 STANDARD SPECIFICATIONS.
 - THE CONTRACTOR SHALL NOT OPERATE ANY WATER MAIN VALVES ON THE EXISTING WATER SYSTEM.
 - ALL SEWER MAINS SHALL BE DIP OR PVC UNLESS OTHERWISE NOTED.
 - ALL MANHOLES SHALL BE 4'-0" INSIDE DIAMETER UNLESS OTHERWISE NOTED.
 - FORCE MAINS SHALL BE DIP ONLY.
 - MANHOLES SHOWN WITH 12" AND 16" WALLS ARE FOR BRICKMANHOLES ONLY.
 - MANHOLES DESIGNATED W.T. IN PLAN AND PROFILE SHALL HAVE WATERTIGHT FRAME AND COVERS, STANDARD DETAIL 0652.
 - WHERE WATERTIGHT MANHOLE FRAME AND COVER IS USED, SET TOP OF FRAME 1'-6" ABOVE FINISHED GRADE UNLESS OTHERWISE NOTED ON THE DRAWINGS.
 - HOUSE(S) WITH THE SYMBOL "CHS" INDICATES THAT CELLAR CANNOT BE SERVED.
 - THE FIRE HYDRANT ON THE ROAD SHALL BE INSTALLED (a) 3 FEET FROM THE BACK OF THE CURB CURB OR (b) 2 FEET FROM THE FACE OF THE CONCRETE SIDEWALK.

TEST GRADIENT: ELEV. 550.0

SHC

LOT NUMBER	MEASUREMENT 1	MEASUREMENT 2	MEASUREMENT 3
1	495' FROM SMH-694.10	LENGTH 9' DEPTH 4" WIND	TAKEN FROM SEWER COUNT CARD
2	32' TO LOT 4 SHC	54.5' TO LOT 5 SHC	65' TO 6" VALVE
3	19' TO SMH-3	29' TO 6" VALVE	
4	48' TO 6" VALVE	32' TO LOT 2 SHC	58.5' TO LOT 5 SHC
5	58.5' TO LOT 4 SHC	54.5' TO LOT 2 SHC	41.5' TO SMH-2
6	46' TO LOT 5 SHC	25.5' TO SMH-2	48.5' TO SMH-1
9	7' TO SMH-3	10.5' TO LOT 9 WHC	30.5' TO 6" VALVE

WAS LOT #1

WHC

LOT NUMBER	MEASUREMENT 1	MEASUREMENT 2	MEASUREMENT 3
1	26.5' TO LOT 5 WHC	53.5' TO SMH-2	31' TO LOT 2 SHC
2	8' TO LOT 2 SHC	26' TO LOT 4 SHC	57' TO 6" VALVE FOR FH
3	7.5' TO LOT 3 SHC	21.5' TO SMH-3	2.5' TO WATER METER
4	8' TO LOT 4 SHC	29' TO LOT 2 WHC	40' TO 6" VALVE FOR FH
5	9' TO LOT 5 SHC	26.5' TO LOT 1 WHC	50' TO LOT 4 SHC
6	10' TO LOT 6 SHC	20' TO SMH-2	50.5' TO LOT 5 SHC
9	10.5' TO LOT 9 SHC	11.5' TO SMH-3	24.5' TO LOT 3 WHC

WAS LOT #7

TYPE OF BUILDING - SINGLE FAM DET.
 NO. OF LOTS/PARCELS - 7
 NO. OF WATER HOUSE CONNECTIONS - 6 (1-EXISTING)
 NO. OF SEWER HOUSE CONNECTIONS - 6 (1-EXISTING)
 SEWER SHED- LITTLE PATUXENT
 PUMPING STATION- ROUTE 108
 WATER ZONE - 400

OWNER/DEVELOPER:
 HARMONY ALL SAINTS LLC.
 4228 COLUMBIA ROAD
 ELLICOTT CITY, MD 21042-5918

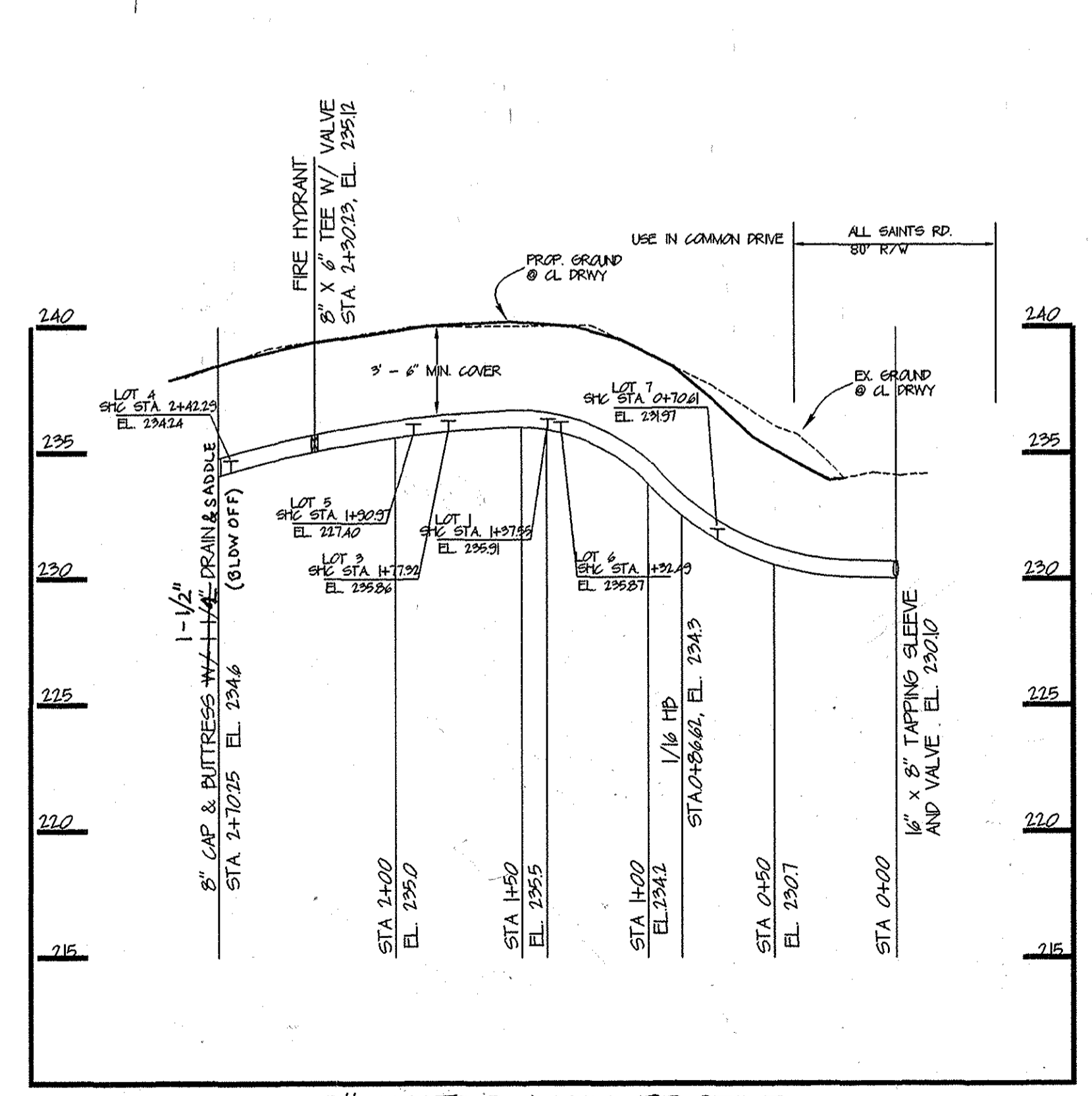
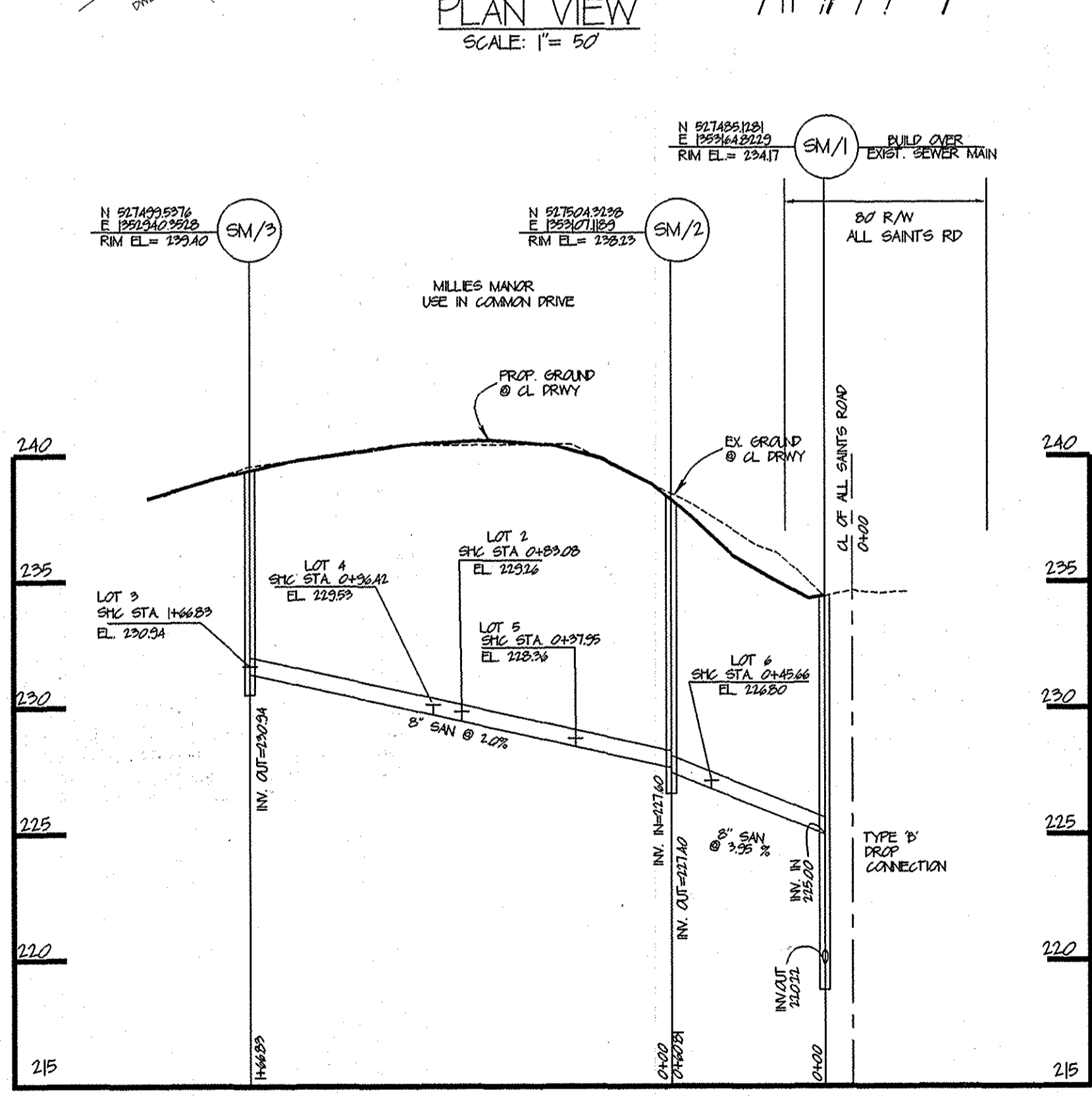
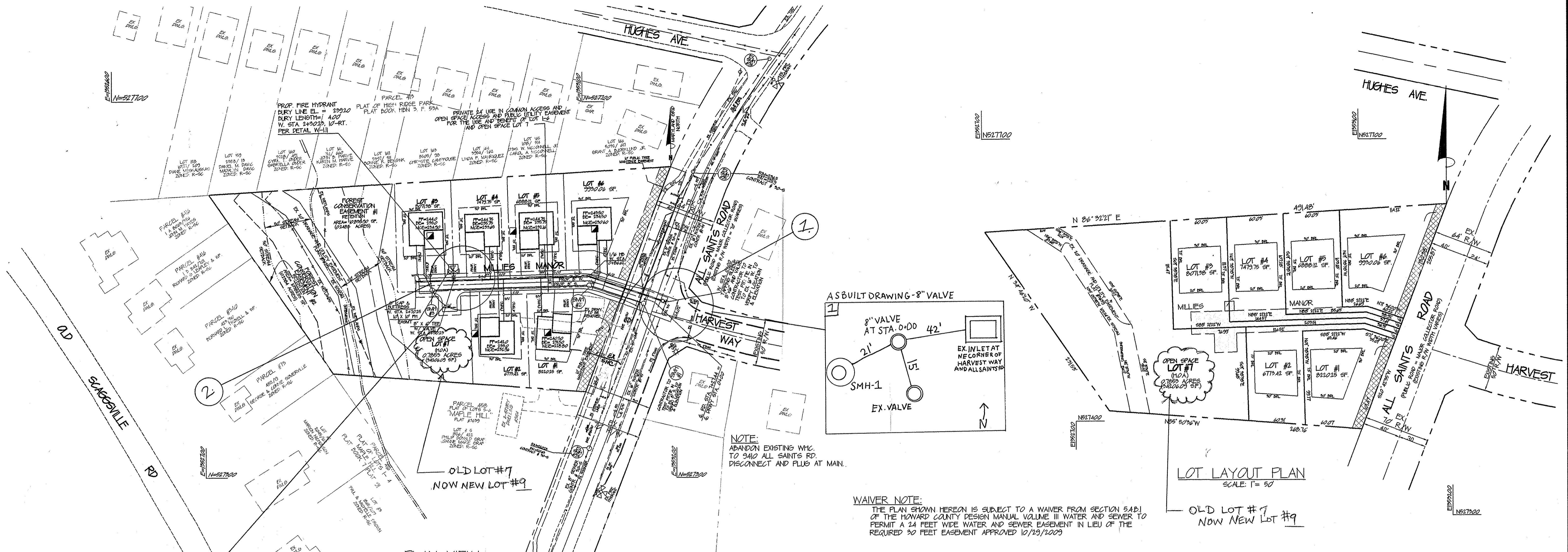
WATER AND SEWER PLAN THE PRESERVE AT MAPLE HILL

A RESUBDIVISION OF MAPLE HILL
 LOT #6 (PLAT #3639)
 9410 ALL SAINTS ROAD
 6TH ELECTION DISTRICT TAX MAP 50, GRID 2, PARCEL 485
 HOWARD COUNTY, MARYLAND

THIS DEVELOPMENT PLAN IS APPROVED FOR SOIL EROSION AND SEDIMENT CONTROL BY THE HOWARD SOIL CONSERVATION DISTRICT FOR ~~2008-2010~~ F-09-94
 12/18/09 DATE

PROFESSIONAL CERTIFICATION:
 I HEREBY CERTIFY THAT THESE DOCUMENTS WERE PREPARED OR APPROVED BY ME AND THAT I AM A DULY LICENSED PROFESSIONAL ENGINEER UNDER THE LAWS OF THE STATE OF MARYLAND LICENSE NO. 78003 EXPIRATION DATE 4/22/2011.

DEPARTMENT OF PUBLIC WORKS HOWARD COUNTY, MARYLAND 12/18/09 DATE	DEPARTMENT OF PLANNING & ZONING HOWARD COUNTY, MARYLAND 12/14/09 DATE	Prepared by: CHARLES R. CROCKEN AND ASSOCIATES, INC. Civil Engineering - Land Planning 922 LEE AVENUE SYKESVILLE, MD 21784 Tel. (410) 543-5708 Fax. (410) 543-3009	DESIGN: CHG DRAWN: CHG CHK: CRG DATE: 6-5-09	FINAL CONSTRUCTION PLAN FOR WATER AND SEWER MAIN 600 SCALE MAP NO. 97 BLOCK NO. 14	THE PRESERVE AT MAPLE HILL A RESUBDIVISION OF MAPLE HILL LOT #6 (PLAT #3639) 9410 ALL SAINTS ROAD CONTRACT NO. 24-4628-D 6TH ELECTION DISTRICT, TAX MAP #50, GRID 2, PARCEL 485 HOWARD COUNTY, MARYLAND SCALE AS SHOWN SHEET 1 OF 2
--	---	--	---	---	---



4" SHC INVERT TABLE

LOT #	8" SEWER STATION	INV. @ STA 8" SEWER	INV. @ ESMNT 8" SEWER	NCE	PE	COMMENTS
LOT 1	EX SHC	228.29	224.66	228.80	231.50	SHC @ 4% SEE PROFILE
LOT 2	0+09.08	229.26	229.40	232.36	239.0	SHC @ 2%
LOT 3	SM/3	230.34	231.91	234.30	235.0	SHC @ 2%
LOT 4	0+26.42	229.53	229.87	233.65	235.75	SHC @ 2%
LOT 5	0+37.95	228.70	228.70	232.16	235.75	SHC @ 2%
LOT 6	0+45.66	226.80	227.16	230.60	234.50	SHC @ 2%

OWNER/DEVELOPER:
HARMONY ALL SAINTS LLC.
4228 COLUMBIA ROAD
ELLICOTT CITY, MD 21042-5918