

QUANTITIES				
ITEMS	QUANTITIES ESTIMATED	AS-BUILT		
		QUANTITIES	TYPE	MANUFACTURER/SUPPLIER
8" WATER MAIN	1262 L.F.	1267 L.F.	CL-54	GRIFFIN/BELAR RD SUPPLY
6" WATER	30 L.F.	30 L.F.	CL-54	GRIFFIN/B.R.S.
1" W.H.C.	2150 L.F.	2170 L.F.	TYPE 'K'	READING/B.R.S.
1-1/4" THIN W.H.C.	21 L.F.			
8" x 8" TEE	2 EA.	2 EA.	CL-350 D.I.P.	SIGMA/B.R.S.
8" x 1/2" H.B.	10 EA.	10 EA.	CL-350 D.I.P.	SIGMA/B.R.S.
8" x 3/4" H.B.	3 EA.	3 EA.	CL-350 D.I.P.	SIGMA/B.R.S.
8" x 1/2" H.B.	1 EA.	1 EA.	CL-350 D.I.P.	SIGMA/B.R.S.
8" x 6" F.H.T.	1 EA.	1 EA.	CL-350 D.I.P.	SIGMA/B.R.S.
8" VALVE	3 EA.	3 EA.	RESISTOR	MUELLER/B.R.S.
6" VALVE	1 EA.	1 EA.	RESISTOR	MUELLER/B.R.S.
FIRE HYDRANT	1 EA.	1 EA.	GRANT/SON	MUELLER/B.R.S.
8" SEWER MAIN (D.I.P.)	190 L.F.			
8" SEWER MAIN	1631 L.F.	1,631 L.F.	SOR-35 PVC	J.M. EAGLE/B.R.S.
4" SHC	2354 L.F.	2,354 L.F.	SOR-35 PVC	J.M. EAGLE/B.R.S.
4" MANHOLE	18 EA.	18 EA.	PREFCAST	CONTRACTORS PREFCAST CORP.
TYPE B DROP CONNECTION	2 EA.	2 EA.	CONSTRUCTED	IN FIELD

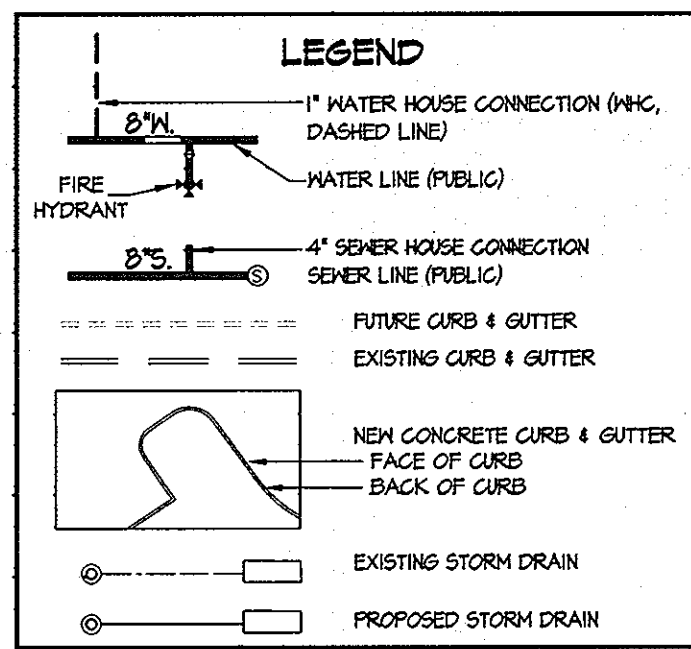
NAME OF UTILITY CONTRACTOR: BOSLEY CONSTRUCTION INC./REESTERS TOWN, MD.

SURVEY AND DRAFTING DIV. CHECKBOX: AS-BUILT DATE:

- NOTES:**
1. ALL WATER HOUSE CONNECTIONS TO BE 1" WITH 1/2" INSIDE METER, UNLESS NOTED OTHERWISE, SEE HO. CO. STD. DETAIL W.3.21.
 2. WATER HOUSE CONNECTIONS FOR LOTS D-44 & D-45 TO BE 1" TWIN W.H.C. SEE HO. CO. STD. DETAIL W.3.23.
 3. WATER HOUSE CONNECTIONS FOR LOTS D-56 THRU D-62 & D-102 THRU D-108 ARE FRONT LOADED GARAGE UNITS. ALL VALVE BOXES SHALL BE IN ACCORDANCE WITH HO. CO. STD. DETAIL G-9.01.

- SHEET INDEX**
- 1) TITLE SHEET
 - 2) WATER and SEWER EXTENSION PLAN
 - 3) WATER and SEWER EXTENSION PROFILES

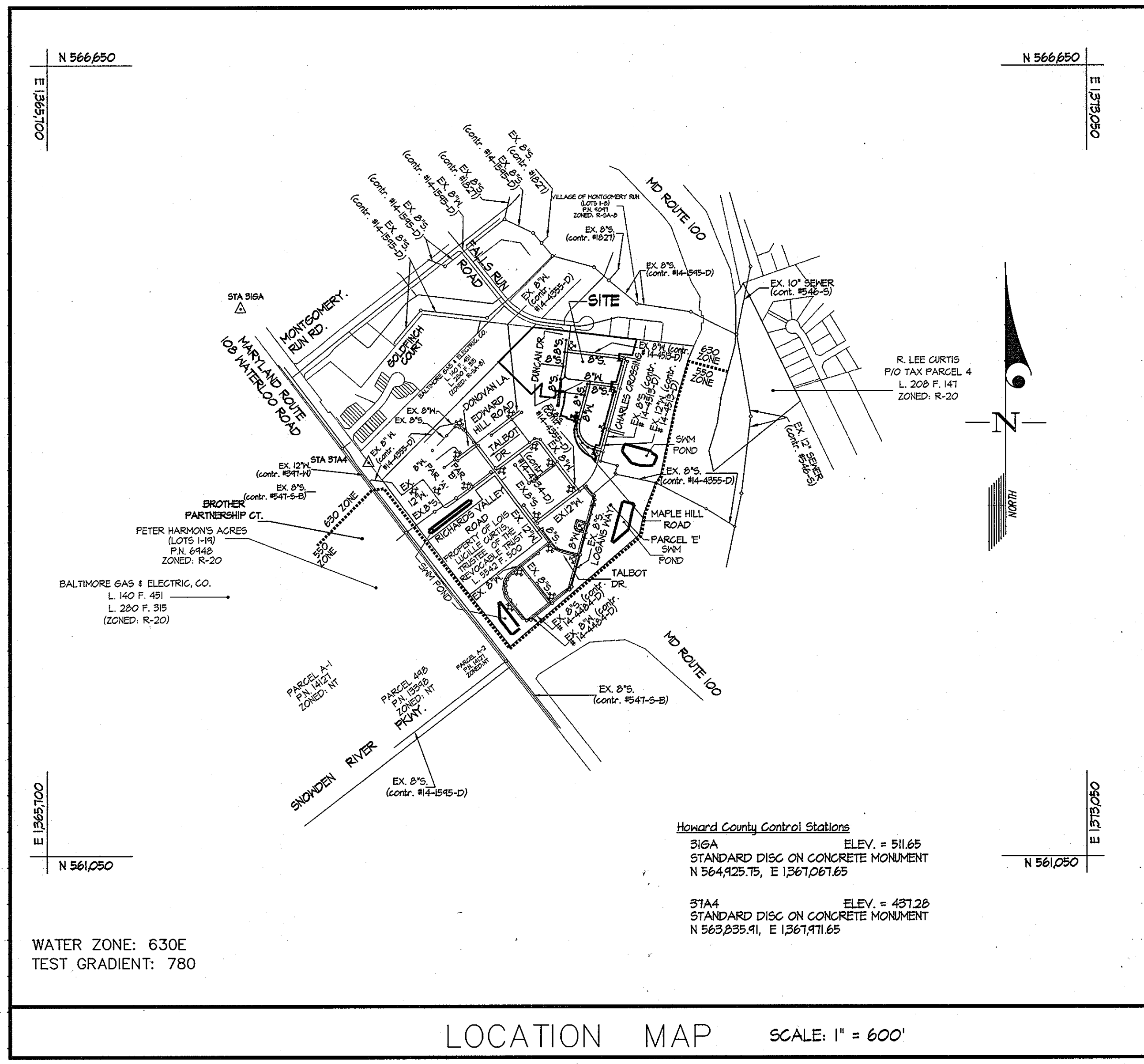
- NOTE:**
1. NON-BUILDABLE PARCEL D-73 IS SHOWN AS LOTS D-91 THRU D-101 FOR PLANNING PURPOSES.
 2. NON-BUILDABLE PARCEL D-74 IS SHOWN AS FUTURE LOTS D-81 THRU D-84 & OPEN SPACE LOT D-70 FOR PLANNING PURPOSES.
 3. NON-BUILDABLE PARCEL D-75 IS SHOWN AS FUTURE LOTS D-85 THRU D-90 FOR PLANNING PURPOSES.
 4. NON-BUILDABLE PARCEL D-76 IS SHOWN AS LOTS D-91 THRU 96 FOR PLANNING PURPOSES.
 5. NON-BUILDABLE PARCEL D-77 IS SHOWN AS LOTS D-102 THRU 109 FOR PLANNING PURPOSES.
 6. NON-BUILDABLE PARCEL D-78 IS SHOWN AS LOTS D-118 THRU D-123 & OPEN SPACE LOT D-132 FOR PLANNING PURPOSES.
 7. NON-BUILDABLE PARCEL D-79 IS SHOWN AS LOT D-110 THRU D-117 FOR PLANNING PURPOSES.
 8. SHC AND W.H.C. FOR LOT C-226 (NOT SHOWN) HAS BEEN PROVIDED UNDER PHASE III WATER & SEWER, (CONTR. # 14-4484-D).
 9. SHC'S AND W.H.C.'S FOR LOTS D-5 THRU D-17 HAVE BEEN PROVIDED UNDER PHASE IV WATER & SEWER, (CONTR. # 14-4513-D).
 10. THERE ARE 54 PHASE V LOTS (TOTAL).



Sediment Control Measures will be implemented in accordance with Section 219 of the Specifications & with Road Drawings Plan F-10-048 ; Drawings for Sediment & Erosion Control.

THIS DEVELOPMENT PLAN IS APPROVED FOR SOIL EROSION AND SEDIMENT CONTROL BY THE HOWARD COUNTY SOIL CONSERVATION DISTRICT.

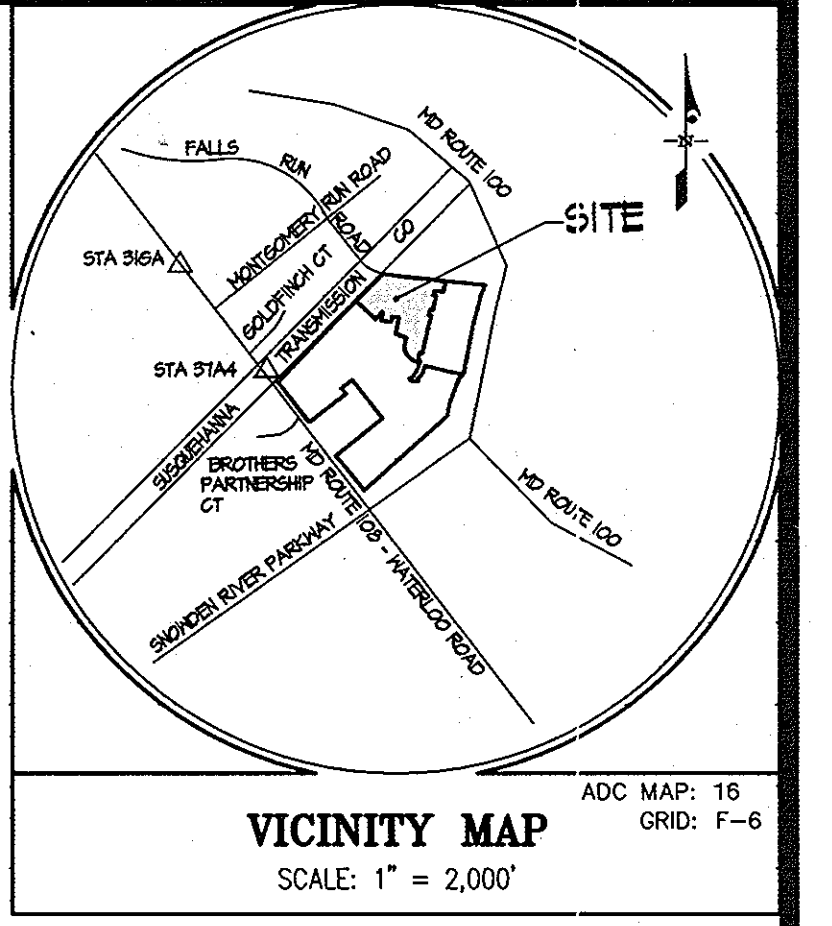
APPROVED: *John R. Roberts* 5/2/10
HOWARD S.C.D. DATE



CONTRACT No. 14-4609-D
SHIPLEY'S GRANT - PHASE V
 ▲ LOTS D-135 thru D-149 &
 LOTS C-226, D-5 THRU D-55 AND OPEN SPACE LOTS D-63 THRU D-68
 COMMON OPEN SPACE LOTS D-69 THRU D-72
 AND NON-BUILDABLE PARCELS D-73 THRU D-80
SHIPLEY'S GRANT - PHASE I
 OPEN SPACE LOT C-64

HOWARD COUNTY, MARYLAND
 DEPARTMENT OF PUBLIC WORKS

TYPE OF BUILDING	RESIDENTIAL
NUMBER OF UNITS	88 UNITS + 1 BULK PARCEL
NUMBER OF S.H.C.'s	88-4" SHC'S + 1 8" CONN. (FUTURE EXT.)
NUMBER OF W.H.C.'s	86-1" W.H.C.'s / 1-1" TWIN W.H.C.
AREA OF COMMERCIAL LOT/PARCEL	1.9 AC.
SEWER SHED	DORSEY - PATAPSCO
PUMPING STATION	PATAPSCO WASTEWATER TREATMENT PLANT



- GENERAL NOTES**
- PART I**
1. APPROXIMATE LOCATIONS OF EXISTING MAINS ARE SHOWN. THE CONTRACTOR SHALL TAKE ALL NECESSARY PRECAUTIONS TO PROTECT EXISTING MAINS AND SERVICES AND MAINTAIN UNINTERRUPTED SERVICE. ANY DAMAGE INCURRED SHALL BE REPAIRED IMMEDIATELY TO THE SATISFACTION OF THE ENGINEER AT THE CONTRACTOR'S EXPENSE.
 2. TOPOGRAPHIC FIELD SURVEYS WERE PERFORMED BY MCKENZIE SYNDER, INC. DATED 5/23/03.
 3. HORIZONTAL AND VERTICAL SURVEY CONTROLS:
- THE COORDINATES SHOWN ON THE DRAWINGS ARE BASED ON MARYLAND STATE REFERENCE SYSTEM NAD 83/91 AS PROJECTED BY HOWARD COUNTY GEODETIC CONTROL STATIONS NO. 316A, AND NO. 31A4.
4. ALL VERTICAL CONTROLS ARE BASED ON NAVD 83. VERTICAL CONTROLS PROVIDED ON DRAWINGS ARE NGVD 29.
 5. ALL PIPE ELEVATIONS SHOWN ARE INVERT ELEVATIONS UNLESS OTHERWISE NOTED ON THE PLANS.
 6. CLEAR ALL UTILITIES BY A MINIMUM OF 12 INCHES. CLEAR ALL POLES BY 5'-0" MINIMUM OR TUNNEL AS REQUIRED UNLESS OTHERWISE NOTED. THE OWNER HAS CONTACTED THE UTILITY COMPANIES AND HAS MADE ARRANGEMENTS FOR BRACING OF POLES AS SHOWN ON THE DRAWINGS. IN THE EVENT THE CONTRACTOR'S WORK REQUIRES BRACING OF ADDITIONAL POLES, ANY COST INCURRED BY THE OWNER FOR THE BRACING OF ADDITIONAL POLES OR DAMAGES SHALL BE DEDUCTED FROM MONIES OWED THE CONTRACTOR. THE CONTRACTOR SHALL COORDINATE WITH THE UTILITY COMPANIES TO SCHEDULE THE BRACING OF THE POLES.
 7. FOR DETAILS NOT SHOWN ON THE DRAWING, AND FOR MATERIALS AND CONSTRUCTION METHODS, USE HOWARD COUNTY DESIGN MANUAL, VOLUME IV, STANDARD SPECIFICATIONS AND DETAILS FOR CONSTRUCTION (LATEST EDITION). THE CONTRACTOR SHALL HAVE A COPY OF VOLUME IV ON THE JOB.
 8. WHERE TEST PITS HAVE BEEN MADE ON EXISTING UTILITIES, THEY ARE NOTED BY THE SYMBOL Φ AT THE LOCATIONS OF THE TEST PITS. A NOTE OR NOTES CONTAINING THE RESULTS OF THE TEST PIT OR PITS IS INCLUDED ON THE DRAWINGS. EXISTING UTILITIES IN THE VICINITY OF THE PROPOSED WORK FOR WHICH TEST PITS HAVE NOT BEEN DUG SHALL BE LOCATED BY THE CONTRACTOR TWO WEEKS IN ADVANCE OF CONSTRUCTION OPERATIONS AT HIS OWN EXPENSE.
 9. THE CONTRACTOR SHALL NOTIFY THE FOLLOWING UTILITY COMPANIES OR AGENCIES AT LEAST FIVE WORKING DAYS BEFORE STARTING WORK ON THESE PLANS:
- | | |
|-----------------------------------|-------------------------------|
| AT&T | 1-800-252-1133 |
| BGE (CONTRACTOR SERVICES) | 410-850-4620 |
| BGE (UNDER GROUND DAMAGE CONTROL) | 410-685-1400 |
| BUREAU OF UTILITIES | 410-313-4400 |
| COLONIAL PIPELINE CO. | 410-745-1340 |
| MISS UTILITY | 1-800-251-TTTT |
| STATE HIGHWAY ADMINISTRATION | 410-531-5533 |
| VERIZON | 1-800-743-0033 / 410-224-4210 |
10. TREES AND SHRUBS ARE TO BE PROTECTED FROM DAMAGE TO THE MAXIMUM EXTENT. TREES AND SHRUBS LOCATED WITHIN THE CONSTRUCTION AREA STRIP ARE NOT TO BE REMOVED OR DAMAGED BY THE CONTRACTOR.
 11. THE CONTRACTOR SHALL REMOVE TREES, STUMPS AND ROOTS ALONG THE LINE OF EXCAVATION. PAYMENT FOR SUCH REMOVAL SHALL BE INCLUDED IN THE UNIT PRICE BID FOR CONSTRUCTION OF THE MAIN.
 12. THE CONTRACTOR SHALL NOTIFY THE BUREAU OF HIGHWAYS, HOWARD COUNTY, AT (410)-313-7480 AT LEAST FIVE WORKING DAYS BEFORE OPEN CUTTING OR BORING/JACKING OF ANY COUNTY ROAD FOR LAYING WATER/SEWER MAINS OR HOUSE CONNECTIONS. THE APPROVAL OF THESE DRAWINGS WILL CONSTITUTE COMPLIANCE WITH DPW REQUIREMENTS PER SECTION 18.14(g) OF THE HOWARD COUNTY CODE.
- PART II - WATER**
1. ALL MAINS SHALL BE D.I.P. CLASS 54 UNLESS OTHERWISE NOTED.
 2. TOPS OF ALL WATER MAINS SHALL HAVE A MINIMUM OF 3'-6" OF COVER UNLESS OTHERWISE NOTED.
 3. VALVES ADJACENT TO TEES SHALL BE STRAPPED TO TEES.
 4. ALL FITTINGS SHALL BE BUTTRESSED OR ANCHORED WITH CONCRETE IN ACCORDANCE WITH STANDARD DETAILS UNLESS OTHERWISE PROVIDED FOR ON THE DRAWINGS.
 5. FIRE HYDRANTS SHALL BE SET TO THE BURY LINE ELEVATIONS SHOWN ON THE DRAWINGS. ALL FIRE HYDRANTS SHALL BE RESTRAINED AND BUTTRESSED OR ANCHORED WITH CONCRETE IN ACCORDANCE WITH THE STANDARD DETAILS. THE SOIL AROUND THE FIRE HYDRANT SHALL BE COMPACTED IN ACCORDANCE WITH SECTION 1000 AND 1005 OF THE STANDARD SPECIFICATIONS.
 6. THE CONTRACTOR SHALL NOT OPERATE ANY WATER MAIN VALVES ON THE EXISTING WATER SYSTEM.
 7. ALL WATER HOUSE CONNECTIONS SHALL BE 1" WITH 1/2" INSIDE METER SETTING UNLESS NOTED OTHERWISE.
- PART III - SEWERS**
1. ALL SEWER MAINS SHALL BE D.I.P. OR P.V.C. UNLESS OTHERWISE NOTED.
 2. ALL SHC TO BE 4" P.V.C. @ 2% UNLESS OTHERWISE NOTED.
 3. ALL MANHOLES SHALL BE 4'-0" INSIDE DIAMETER UNLESS OTHERWISE NOTED.
 4. FORCE MAINS SHALL BE D.I.P. ONLY.
 5. MANHOLES SHOWN WITH THE 12" AND 16" WALLS ARE FOR BRICK MANHOLES ONLY.
 6. MANHOLES DESIGNATED W.T. IN PLAN AND PROFILE SHALL HAVE WATERTIGHT FRAME AND COVER, STANDARD DETAIL G.552. WHERE WATERTIGHT MANHOLE FRAMES AND COVERS ARE USED, SET TOP OF FRAME 1'-6" ABOVE FINISHED GRADE UNLESS OTHERWISE NOTED ON THE DRAWINGS.
 7. HOUSE(S) WITH THE SYMBOL 'C.N.S.' INDICATES THE CELLAR CANNOT BE SERVED.

DEPARTMENT OF PUBLIC WORKS
 HOWARD COUNTY, MARYLAND

Steve Cline 5/2/10
 CHIEF, BUREAU OF UTILITIES DATE

DEPARTMENT OF PLANNING AND ZONING
 HOWARD COUNTY, MARYLAND

John D. Williams 6/7/10
 CHIEF, DEVELOPMENT ENGINEERING DIVISION DATE

GLWGUTSCHICK LITTLE & WEBER, P.A.
 CIVIL ENGINEERS, LAND SURVEYORS, LAND PLANNERS, LANDSCAPE ARCHITECTS
 3809 NATIONAL DRIVE - SUITE 250 - BURTONSVILLE OFFICE PARK
 BURTONSVILLE, MARYLAND 20886
 TEL: 301-421-4024 BAL: 410-880-1820 DC/VA: 301-989-2524 FAX: 301-421-4186

DATE: APRIL, 2010

PROFESSIONAL CERTIFICATION
 I HEREBY CERTIFY THAT THESE PLANS WERE PREPARED OR APPROVED BY ME, AND THAT I AM A DULY LICENSED PROFESSIONAL ENGINEER UNDER THE LAWS OF THE STATE OF MARYLAND, LICENSE NO. 14931
 EXP. DATE: MAY 21, 2012

Michael J. Gutschick
 PROFESSIONAL ENGINEER

BY	NO	REVISION	DATE
WJ	1	Rev. Title & Title Block	10/20/03
KC	2	AS-BUILT	5/27/13

TITLE SHEET

600' SCALE MAP NO. 37 BLOCK NO. 1&2 ZONING: R-A-15 CONTRACT No. 14-4609-D TAX MAP 37, B-1

SHIPLEY'S GRANT - PHASE V
 Lots C-226, D-5 thru D-55, Open Space Lots D-63 thru D-68
 Common Open Space Lots D-69 thru D-72 and Non-Buildable
 Parcels "D-73" thru "D-80" and
 Shipley's Grant - Phase I
 Open Space Lot C-64
 HOWARD COUNTY, MARYLAND
 ELECTION DISTRICT No. 1

SCALE: AS SHOWN
 SHEET: 1 OF 4

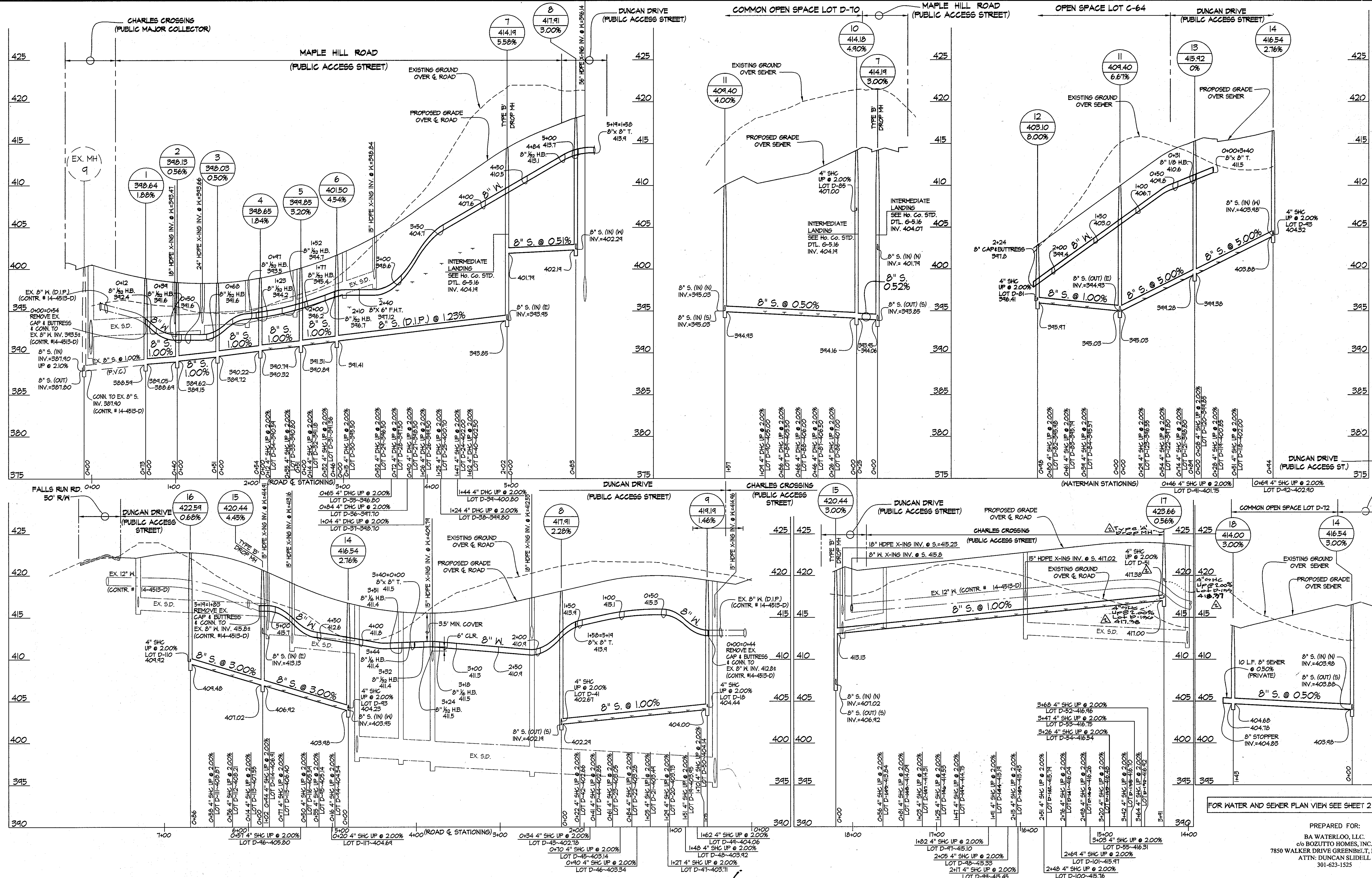
PREPARED FOR:
 BA WATERLOO, LLC.
 66 BOZUTTO HOMES, INC.
 7850 WALKER DRIVE GREENBELT, MD 20770
 ATTN: DUNCAN SLIDELL
 301-623-1525

I, CAROL BRANNING (AS/PA) Check: 11/05/10, 11/16/10, 11/23/10, 11/24/10, 11/25/10, 11/26/10, 11/27/10, 11/28/10, 11/29/10, 11/30/10, 12/1/10, 12/2/10, 12/3/10, 12/4/10, 12/5/10, 12/6/10, 12/7/10, 12/8/10, 12/9/10, 12/10/10, 12/11/10, 12/12/10, 12/13/10, 12/14/10, 12/15/10, 12/16/10, 12/17/10, 12/18/10, 12/19/10, 12/20/10, 12/21/10, 12/22/10, 12/23/10, 12/24/10, 12/25/10, 12/26/10, 12/27/10, 12/28/10, 12/29/10, 12/30/10, 12/31/10, 1/1/11, 1/2/11, 1/3/11, 1/4/11, 1/5/11, 1/6/11, 1/7/11, 1/8/11, 1/9/11, 1/10/11, 1/11/11, 1/12/11, 1/13/11, 1/14/11, 1/15/11, 1/16/11, 1/17/11, 1/18/11, 1/19/11, 1/20/11, 1/21/11, 1/22/11, 1/23/11, 1/24/11, 1/25/11, 1/26/11, 1/27/11, 1/28/11, 1/29/11, 1/30/11, 1/31/11, 2/1/11, 2/2/11, 2/3/11, 2/4/11, 2/5/11, 2/6/11, 2/7/11, 2/8/11, 2/9/11, 2/10/11, 2/11/11, 2/12/11, 2/13/11, 2/14/11, 2/15/11, 2/16/11, 2/17/11, 2/18/11, 2/19/11, 2/20/11, 2/21/11, 2/22/11, 2/23/11, 2/24/11, 2/25/11, 2/26/11, 2/27/11, 2/28/11, 2/29/11, 2/30/11, 3/1/11, 3/2/11, 3/3/11, 3/4/11, 3/5/11, 3/6/11, 3/7/11, 3/8/11, 3/9/11, 3/10/11, 3/11/11, 3/12/11, 3/13/11, 3/14/11, 3/15/11, 3/16/11, 3/17/11, 3/18/11, 3/19/11, 3/20/11, 3/21/11, 3/22/11, 3/23/11, 3/24/11, 3/25/11, 3/26/11, 3/27/11, 3/28/11, 3/29/11, 3/30/11, 3/31/11, 4/1/11, 4/2/11, 4/3/11, 4/4/11, 4/5/11, 4/6/11, 4/7/11, 4/8/11, 4/9/11, 4/10/11, 4/11/11, 4/12/11, 4/13/11, 4/14/11, 4/15/11, 4/16/11, 4/17/11, 4/18/11, 4/19/11, 4/20/11, 4/21/11, 4/22/11, 4/23/11, 4/24/11, 4/25/11, 4/26/11, 4/27/11, 4/28/11, 4/29/11, 4/30/11, 5/1/11, 5/2/11, 5/3/11, 5/4/11, 5/5/11, 5/6/11, 5/7/11, 5/8/11, 5/9/11, 5/10/11, 5/11/11, 5/12/11, 5/13/11, 5/14/11, 5/15/11, 5/16/11, 5/17/11, 5/18/11, 5/19/11, 5/20/11, 5/21/11, 5/22/11, 5/23/11, 5/24/11, 5/25/11, 5/26/11, 5/27/11, 5/28/11, 5/29/11, 5/30/11, 5/31/11, 6/1/11, 6/2/11, 6/3/11, 6/4/11, 6/5/11, 6/6/11, 6/7/11, 6/8/11, 6/9/11, 6/10/11, 6/11/11, 6/12/11, 6/13/11, 6/14/11, 6/15/11, 6/16/11, 6/17/11, 6/18/11, 6/19/11, 6/20/11, 6/21/11, 6/22/11, 6/23/11, 6/24/11, 6/25/11, 6/26/11, 6/27/11, 6/28/11, 6/29/11, 6/30/11, 7/1/11, 7/2/11, 7/3/11, 7/4/11, 7/5/11, 7/6/11, 7/7/11, 7/8/11, 7/9/11, 7/10/11, 7/11/11, 7/12/11, 7/13/11, 7/14/11, 7/15/11, 7/16/11, 7/17/11, 7/18/11, 7/19/11, 7/20/11, 7/21/11, 7/22/11, 7/23/11, 7/24/11, 7/25/11, 7/26/11, 7/27/11, 7/28/11, 7/29/11, 7/30/11, 7/31/11, 8/1/11, 8/2/11, 8/3/11, 8/4/11, 8/5/11, 8/6/11, 8/7/11, 8/8/11, 8/9/11, 8/10/11, 8/11/11, 8/12/11, 8/13/11, 8/14/11, 8/15/11, 8/16/11, 8/17/11, 8/18/11, 8/19/11, 8/20/11, 8/21/11, 8/22/11, 8/23/11, 8/24/11, 8/25/11, 8/26/11, 8/27/11, 8/28/11, 8/29/11, 8/30/11, 8/31/11, 9/1/11, 9/2/11, 9/3/11, 9/4/11, 9/5/11, 9/6/11, 9/7/11, 9/8/11, 9/9/11, 9/10/11, 9/11/11, 9/12/11, 9/13/11, 9/14/11, 9/15/11, 9/16/11, 9/17/11, 9/18/11, 9/19/11, 9/20/11, 9/21/11, 9/22/11, 9/23/11, 9/24/11, 9/25/11, 9/26/11, 9/27/11, 9/28/11, 9/29/11, 9/30/11, 10/1/11, 10/2/11, 10/3/11, 10/4/11, 10/5/11, 10/6/11, 10/7/11, 10/8/11, 10/9/11, 10/10/11, 10/11/11, 10/12/11, 10/13/11, 10/14/11, 10/15/11, 10/16/11, 10/17/11, 10/18/11, 10/19/11, 10/20/11, 10/21/11, 10/22/11, 10/23/11, 10/24/11, 10/25/11, 10/26/11, 10/27/11, 10/28/11, 10/29/11, 10/30/11, 10/31/11, 11/1/11, 11/2/11, 11/3/11, 11/4/11, 11/5/11, 11/6/11, 11/7/11, 11/8/11, 11/9/11, 11/10/11, 11/11/11, 11/12/11, 11/13/11, 11/14/11, 11/15/11, 11/16/11, 11/17/11, 11/18/11, 11/19/11, 11/20/11, 11/21/11, 11/22/11, 11/23/11, 11/24/11, 11/25/11, 11/26/11, 11/27/11, 11/28/11, 11/29/11, 11/30/11, 12/1/11, 12/2/11, 12/3/11, 12/4/11, 12/5/11, 12/6/11, 12/7/11, 12/8/11, 12/9/11, 12/10/11, 12/11/11, 12/12/11, 12/13/11, 12/14/11, 12/15/11, 12/16/11, 12/17/11, 12/18/11, 12/19/11, 12/20/11, 12/21/11, 12/22/11, 12/23/11, 12/24/11, 12/25/11, 12/26/11, 12/27/11, 12/28/11, 12/29/11, 12/30/11, 12/31/11, 2011, 2012, 2013, 2014, 2015, 2016, 2017, 2018, 2019, 2020, 2021, 2022, 2023, 2024, 2025, 2026, 2027, 2028, 2029, 2030, 2031, 2032, 2033, 2034, 2035, 2036, 2037, 2038, 2039, 2040, 2041, 2042, 2043, 2044, 2045, 2046, 2047, 2048, 2049, 2050, 2051, 2052, 2053, 2054, 2055, 2056, 2057, 2058, 2059, 2060, 2061, 2062, 2063, 2064, 2065, 2066, 2067, 2068, 2069, 2070, 2071, 2072, 2073, 2074, 2075, 2076, 2077, 2078, 2079, 2080, 2081, 2082, 2083, 2084, 2085, 2086, 2087, 2088, 2089, 2090, 2091, 2092, 2093, 2094, 2095, 2096, 2097, 2098, 2099, 2100, 2101, 2102, 2103, 2104, 2105, 2106, 2107, 2108, 2109, 2110, 2111, 2112, 2113, 2114, 2115, 2116, 2117, 2118, 2119, 2120, 2121, 2122, 2123, 2124, 2125, 2126, 2127, 2128, 2129, 2130, 2131, 2132, 2133, 2134, 2135, 2136, 2137, 2138, 2139, 2140, 2141, 2142, 2143, 2144, 2145, 2146, 2147, 2148, 2149, 2150, 2151, 2152, 2153, 2154, 2155, 2156, 2157, 2158, 2159, 2160, 2161, 2162, 2163, 2164, 2165, 2166, 2167, 2168, 2169, 2170, 2171, 2172, 2173, 2174, 2175, 2176, 2177, 2178, 2179, 2180, 2181, 2182, 2183, 2184, 2185, 2186, 2187, 2188, 2189, 2190, 2191, 2192, 2193, 2194, 2195, 2196, 2197, 2198, 2199, 2200, 2201, 2202, 2203, 2204, 2205, 2206, 2207, 2208, 2209, 2210, 2211, 2212, 2213, 2214, 2215, 2216, 2217, 2218, 2219, 2220, 2221, 2222, 2223, 2224, 2225, 2226, 2227, 2228, 2229, 2230, 2231, 2232, 2233, 2234, 2235, 2236, 2237, 2238, 2239, 2240, 2241, 2242, 2243, 2244, 2245, 2246, 2247, 2248, 2249, 2250, 2251, 2252, 2253, 2254, 2255, 2256, 2257, 2258, 2259, 2260, 2261, 2262, 2263, 2264, 2265, 2266, 2267, 2268, 2269, 2270, 2271, 2272, 2273, 2274, 2275, 2276, 2277, 2278, 2279, 2280, 2281, 2282, 2283, 2284, 2285, 2286, 2287, 2288, 2289, 2290, 2291, 2292, 2293, 2294, 2295, 2296, 2297, 2298, 2299, 2300, 2301, 2302, 2303, 2304, 2305, 2306, 2307, 2308, 2309, 2310, 2311, 2312, 2313, 2314, 2315, 2316, 2317, 2318, 2319, 2320, 2321, 2322, 2323, 2324, 2325, 2326, 2327, 2328, 2329, 2330, 2331, 2332, 2333, 2334, 2335, 2336, 2337, 2338, 2339, 2340, 2341, 2342, 2343, 2344, 2345, 2346, 2347, 2348, 2349, 2350, 2351, 2352, 2353, 2354, 2355, 2356, 2357, 2358, 2359, 2360, 2361, 2362, 2363, 2364, 2365, 2366, 2367, 2368, 2369, 2370, 2371, 2372, 2373, 2374, 2375, 2376, 2377, 2378, 2379, 2380, 2381, 2382, 2383, 2384, 2385, 2386, 2387, 2388, 2389, 2390, 2391, 2392, 2393, 2394, 2395, 2396, 2397, 2398, 2399, 2400, 2401, 2402, 2403, 2404, 2405, 2406, 2407, 2408, 2409, 2410, 2411, 2412, 2413, 2414, 2415, 2416, 2417, 2418, 2419, 2420, 2421, 2422, 2423, 2424, 2425, 2426, 2427, 2428, 2429, 2430, 2431, 2432, 2433, 2434, 2435, 2436, 2437, 2438, 2439, 2440, 2441, 2442, 2443, 2444, 2445, 2446, 2447, 2448, 2449, 2450, 2451, 2452, 2453, 2454, 2455, 2456, 2457, 2458, 2459, 2460, 2461, 2462, 2463, 246

MINIMUM CELLAR ELEVATIONS		INV. @ R/W/ESMT. ELEVATION
LOT NO.	ELEVATION	
DUNCAN DRIVE		
D-18	401.90	404.18
D-19	401.41	404.33
D-20	401.25	404.11
D-21	401.00	404.81
D-22	406.18	409.66
D-23	406.51	409.43
MAPLE HILL ROAD		
D-24	409.62	402.74
D-25	404.32	401.44
D-26	403.12	400.24
D-27	402.12	398.24
D-28	401.12	396.24
D-29	400.12	394.24
D-30	394.12	396.24
D-31	394.48	392.10
D-32	394.46	391.42
D-33	394.36	391.54
D-34	394.31	391.53
D-35	400.10	391.18
D-36	401.00	398.08
D-37	402.00	399.08
D-38	403.10	400.18
D-39	404.10	401.18
D-40	403.18	402.88
DUNCAN DRIVE		
D-41	406.53	409.51
D-42	406.26	409.40
D-43	406.44	409.52
D-44	406.51	409.54
D-45	406.20	409.33
D-46	401.00	404.08
D-47	401.51	404.45
D-48	401.58	404.66
D-49	401.12	404.80
D-50	401.80	404.88
CHARLES CROSSING		
D-51	420.61	417.18
D-52	420.61	417.14
D-53	420.03	417.04
D-54	418.22	416.88
D-55	419.59	416.65
D-126	421.45	418.14
D-127	420.24	417.62
D-128	420.21	417.40
D-129	420.45	417.18
D-130	420.23	416.96
D-131	420.01	416.74
D-132	419.76	416.44
D-133	419.21	416.31
D-134	419.66	416.10
D-135	419.35	415.74
D-136	419.23	415.61
D-137	419.00	415.44
D-138	419.40	416.13
D-139	419.16	415.84
D-140	418.12	415.45
D-141	419.50	415.25
D-142	418.22	415.01
D-143	418.06	414.74
D-144	417.81	414.54
DUNCAN DRIVE		
D-46	409.21	406.54
D-45	404.15	409.88
D-44	408.58	406.31
D-43	408.20	404.43
D-42	406.96	403.64
D-41	406.84	402.51
COMMON OPEN SPACE LOT D-70		
D-56	410.12	407.16
D-57	409.62	406.10
D-58	409.12	406.20
D-59	408.62	405.10
D-60	408.12	405.20
OPEN SPACE LOT C-64		
D-84	394.01	396.74
D-83	394.22	396.25
D-82	394.36	396.44
D-81	394.12	396.82
DUNCAN DRIVE		
D-123	400.01	396.74
D-122	401.26	391.94
D-121	402.26	398.94
D-120	403.25	400.08
D-119	404.58	401.11
D-118	405.51	402.30
D-117	408.34	409.01
D-116	404.24	405.91
D-115	410.05	408.19
D-114	410.16	407.28
D-113	411.20	407.95
D-112	411.86	409.54
D-111	412.52	404.25
D-110	413.53	410.26
D-109	412.40	410.22
D-108	412.73	410.23
D-107	412.73	410.23
D-106	412.73	410.23
D-105	412.73	410.23
D-104	412.73	410.23
D-103	412.73	410.23
D-102	412.73	410.23
D-101	412.73	410.23
D-100	412.73	410.23
D-99	412.73	410.23
D-98	412.73	410.23
D-97	412.73	410.23
D-96	412.73	410.23
D-95	412.73	410.23
D-94	412.73	410.23
D-93	412.73	410.23
D-92	412.73	410.23
D-91	412.73	410.23
D-90	412.73	410.23
D-89	412.73	410.23
D-88	412.73	410.23
D-87	412.73	410.23
D-86	412.73	410.23
D-85	412.73	410.23
D-84	412.73	410.23
D-83	412.73	410.23
D-82	412.73	410.23
D-81	412.73	410.23
D-80	412.73	410.23
D-79	412.73	410.23
D-78	412.73	410.23
D-77	412.73	410.23
D-76	412.73	410.23
D-75	412.73	410.23
D-74	412.73	410.23
D-73	412.73	410.23
D-72	412.73	410.23
D-71	412.73	410.23
D-70	412.73	410.23
D-69	412.73	410.23
D-68	412.73	410.23
D-67	412.73	410.23
D-66	412.73	410.23
D-65	412.73	410.23
D-64	412.73	410.23
D-63	412.73	410.23
D-62	412.73	410.23
D-61	412.73	410.23
D-60	412.73	410.23
D-59	412.73	410.23
D-58	412.73	410.23
D-57	412.73	410.23
D-56	412.73	410.23
D-55	412.73	410.23
D-54	412.73	410.23
D-53	412.73	410.23
D-52	412.73	410.23
D-51	412.73	410.23
D-50	412.73	410.23
D-49	412.73	410.23
D-48	412.73	410.23
D-47	412.73	410.23
D-46	412.73	410.23
D-45	412.73	410.23
D-44	412.73	410.23
D-43	412.73	410.23
D-42	412.73	410.23
D-41	412.73	410.23
D-40	412.73	410.23
D-39	412.73	410.23
D-38	412.73	410.23
D-37	412.73	410.23
D-36	412.73	410.23
D-35	412.73	410.23
D-34	412.73	410.23
D-33	412.73	410.23
D-32	412.73	410.23
D-31	412.73	410.23
D-30	412.73	410.23
D-29	412.73	410.23
D-28	412.73	410.23
D-27	412.73	410.23
D-26	412.73	410.23
D-25	412.73	410.23
D-24	412.73	410.23
D-23	412.73	410.23
D-22	412.73	410.23
D-21	412.73	410.23
D-20	412.73	410.23
D-19	412.73	410.23
D-18	412.73	410.23
D-17	412.73	410.23
D-16	412.73	410.23
D-15	412.73	410.23
D-14	412.73	410.23
D-13	412.73	410.23
D-12	412.73	410.23
D-11	412.73	410.23
D-10	412.73	410.23
D-9	412.73	410.23
D-8	412.73	410.23
D-7	412.73	410.23
D-6	412.73	410.23
D-5	412.73	410.23
D-4	412.73	410.23
D-3	412.73	410.23
D-2	412.73	410.23
D-1	412.73	410.23

LOT FRONTAGE TABLE	
LOT No.	DISTANCE (feet)
DUNCAN DRIVE	
D-18	36.53'
D-19	22.33'
D-20	22.33'
D-21	22.33'
D-22	22.23'
D-23	33.55'
MAPLE HILL ROAD	
D-24	21.00'
D-25	20.00'
D-26	16.00'
D-27	16.00'
D-28	20.00'
D-29	25.00'
D-30	25.00'
D-31	20.11'
D-32	16.48'
D-33	11.20'
D-34	32.14'
D-35	23.00'
D-36	20.00'
D-37	20.00'
D-38	20.00'
D-39	20.00'
D-40	30.22'
DUNCAN DRIVE	
D-41	21.00'
D-42	20.00'
D-43	16.00'
D-44	16.00'
D-45	20.00'
D-46	21.00'
D-47	21.00'
D-48	16.00'
D-49	16.00'
D-50	33.50'
CHARLES CROSSING	
D-51	24.18'
D-52	20.00'
D-53	20.00'
D-54	20.00'
D-55	21.00'
D-126	21.00'
D-127	20.00'
D-128	20.00'
D-129	20.00'
D-130	20.00'
D-131	20.00'
D-132	20.00'
D-133	20.00'
D-134	20.00'
D-135	20.00'
D-136	20.00'
D-137	20.00'
D-138	20.00'
D-139	20.00'
D-140	20.00'
DUNCAN DRIVE	
D-46	32.00'
D-45	22.00'
D-44	22.00'
D-43	22.00'
D-42	22.00'
D-41	25.33'
DUNCAN DRIVE	
D-56	32.48'
D-55	20.00'
D-54	20.00'
D-53	20.00'
D-52	20.00'
D-51	20.00'
OPEN SPACE LOT C-64	
D-84	24.00'
D-83	20.00'
D-82	20.00'
D-81	23.00'
DUNCAN DRIVE	
D-123	22.00'
D-122	22.00'
D-121	22.00'
D-120	22.00'
D-119	22.00'
D-118	24.00'
D-117	21.00'
D-116	22.00'
D-115	22.00'
D-114	22.00'
D-113	22.00'
D-112	22.00'
D-111	22.00'
D-110	33.00'
D-109	20.71'
D-108	24.73'
D-107	24.73'
D-106	24.73'
D-105	24.73'
D-104	24.73'
D-103	24.73'
D-102	24.73'
D-101	24.73'
D-100	24.73'
D-99	24.73'
D-98	24.73'
D-97	24.73'
D-96	24.73'
D-95	24.73'
D-94	24.73'
D-93	24.73'
D-92	24.73'
D-91	24.73'
D-90	24.73'
D-89	24.73'
D-88	24.73'
D-87	24.73'
D-86	24.73'
D-85	24.73'
D-84	24.73'
D-83	24.73'
D-82	24.73'
D-81	24.73'
D-80	24.73'
D-79	24.73'
D-78	24.73'
D-77	24.73'
D-76	24.73'
D-75	24.73'
D-74	24.73'
D-73	24.73'
D-72	24.73'
D-71	24.73'
D-70	24.73'
D-69	24.73'
D-68	24.73'
D-67	24.73'
D-66	24.73'
D-65	24.73'
D-64	24.73'
D-63	24.73'
D-62	24.73'
D-61	24.73'
D-60	24.73'
D-59	24.73'
D-58	24.73'
D-57	24.73'
D-56	24.73'
D-55	24.73'
D-54	24.73'
D-53	24.73'
D-52	24.73'
D-51	24.73'
D-50	24.73'
D-49	24.73'
D-48	24.73'
D-47	24.73'
D-46	24.73'
D-45	24.73'
D-44	24.73'
D-43	24.73'
D-42	24.73'
D-41	24.73'
D-40	24.73'
D-39	24.73'
D-38	24.73'
D-37	24.73'
D-36	24.73'
D-35	24.73'
D-34	24.73'
D-33	24.73'
D-32	24.73'
D-31	24.73'
D-30	24.73'
D-29	24.73'
D-28	24.73'
D-27	24.73'
D-26	24.73'
D-25	24.73'
D-24	24.73'
D-23	24.73'
D-22	24.73'
D-21	24.73'
D-20	24.73'
D-19	24.73'
D-18	24.73'
D-17	24.73'
D-16	24.73'
D-15	24.73'
D-14	24.73'
D-13	24.73'
D-12	24.73'
D-11	24.73'
D-10	24.73'
D-9	24.73'
D-8	24.73'
D-7	24.73'
D-6	24.73'
D-5	24.73'
D-4	24.73'
D-3	24.73'
D-2	24.73'
D-1	24.73'

FITTING INFORMATION			
WATERLINE (MAPLE HILL ROAD)			
LOCATION	FITTING	STATION	OFFSET
1	8" HB.	ST. STA. 0+11	9.3' RIGHT
2	8" HB.	ST. STA. 1+01	9.4' RIGHT
3	8" HB.	ST. STA. 1+31	9.5' RIGHT
4	8" HB.	ST. STA. 1+68	9.5' RIGHT
5	8" HB.	ST. STA. 1+96	9.5' RIGHT
6	8" HB.	ST. STA. 2+21	9.5' RIGHT
7	8" HB.	ST. STA. 2+54	9.5' RIGHT
8	8" HB.	ST. STA. 2+84	9.5' RIGHT
9	8" HB.	ST. STA. 3+14	10.0' RIGHT
10	FIRE HYDRANT	ST. STA. 3+14	20.1' LEFT
11	8		



FOR WATER AND SEWER PLAN VIEW SEE SHEET 2 OF 3

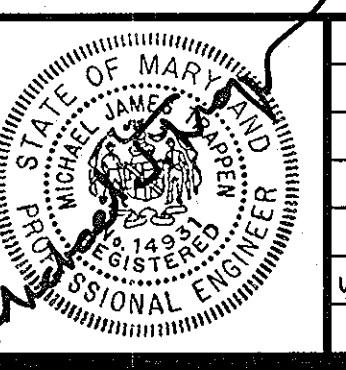
PREPARED FOR:
 BA WATERLOO, LLC.
 c/o BOZZITTO HOMES, INC.
 7850 WALKER DRIVE GREENBELT, MD 20770
 ATTN: DUNCAN SLIDELL
 301-623-1525

DEPARTMENT OF PUBLIC WORKS
 HOWARD COUNTY, MARYLAND
 Chief, Bureau of Utilities
 5/21/10

DEPARTMENT OF PLANNING AND ZONING
 HOWARD COUNTY, MARYLAND
 Chief, Development Engineering Division

GLWGUTSCHICK LITTLE & WEBER, P.A.
 CIVIL ENGINEERS, LAND SURVEYORS, LAND PLANNERS, LANDSCAPE ARCHITECTS
 3909 NATIONAL DRIVE - SUITE 250 - BURTONSVILLE OFFICE PARK
 BURTONSVILLE, MARYLAND 20868
 TEL: 301-421-4024 BALT: 410-880-1820 DC/VA: 301-889-2524 FAX: 301-421-4186

DATE: APRIL, 2010
 G.L.W. No. 03006
 PROFESSIONAL CERTIFICATION
 I HEREBY CERTIFY THAT THESE PLANS WERE PREPARED OR APPROVED BY ME, AND THAT I AM A DULY LICENSED PROFESSIONAL ENGINEER UNDER THE LAWS OF THE STATE OF MARYLAND, LICENSE NO. 14931
 EXP. DATE: MAY, 21, 2012



BY	NO	REVISION	DATE

WATER and SEWER EXTENSION PROFILES
 60' SCALE MAP NO. 37 BLOCK NO. 1&2
 ZONING: R-A-15

SHIPLEY'S GRANT - PHASE V
 Lots C-226, D-5 thru D-65, Open Space Lots D-65 thru D-68
 Common Open Space Lots D-69 thru D-72 and Non-Buildable
 Parcels "D-73" thru "D-80" and Shipley's Grant - Phase I
 Open Space Lot C-64
 HOWARD COUNTY, MARYLAND
 ELECTION DISTRICT No. 1
 CONTRACT NO. 14-4609-D TAX MAP 37, B-1

SCALE: AS SHOWN
 SHEET: 3 OF 4

L:\CADD\WORKING\03006\Phase V\05-PUB-WAT-SEW\FINAL_MDS\03006-PWS-CG-PROF.dwg
 PLOTED: 4/22/2010 8:53 AM, LAST SAVED: 4/22/2010 8:49 AM, PLOTTED BY: Mike Hopson