

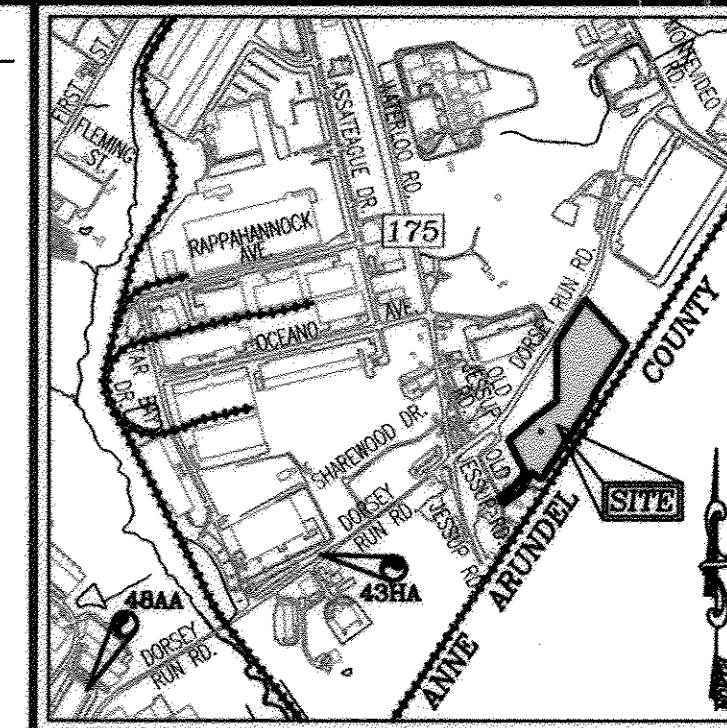
FINAL WATER AND SEWER PLAN

JESSUP PARK

ASPHALT PLANT, PARCEL B

CONTRACT 14-4597-D

BENCHMARKS
 HOWARD COUNTY BENCHMARK 48AA
 N 539,314.900 E 1,371,539.251 ELEV.: 240.78'
 HOWARD COUNTY BENCHMARK 43HA
 N 540,761.716 E 1,373,837.365 ELEV.: 224.89'



LOCATION MAP
 SCALE: 1"=2000'
 ADC MAP: 5054 PG

GENERAL NOTES

- PART I**
- APPROXIMATE LOCATION OF EXISTING MAINS ARE SHOWN. THE CONTRACTOR SHALL TAKE ALL NECESSARY PRECAUTIONS TO PROTECT EXISTING MAINS AND SERVICES AND MAINTAIN UNINTERRUPTED SERVICE. ANY DAMAGE INCURRED SHALL BE REPAIRED IMMEDIATELY TO THE SATISFACTION OF THE ENGINEER AT THE CONTRACTOR'S EXPENSE.
 - TOPOGRAPHIC FIELD SURVEYS WERE PERFORMED IN JULY 2006 BY ROBERT H. VOGEL ENGINEERING, INC.
 - THE COORDINATES SHOWN ON THE DRAWINGS ARE BASED ON MARYLAND STATE REFERENCE SYSTEM NAD 83/91 AS PROJECTED BY HOWARD COUNTY GEODETIC CONTROL STATIONS 3513 AND 41CC. ALL VERTICAL CONTROLS ARE BASED ON (NAVD) 27. VERTICAL CONTROLS PROVIDED ON DRAWINGS ARE:
 GEODETIC SURVEY CONTROL 43HA (N 540,761.716 E 1,373,837.365)
 BRASS DISC SET ON TOP OF A CONCRETE MONUMENT, LOCATED AT ROUTE 175 NW OF TAMAR ROAD, 45' WEST SIDE OF SNOW RTE SIGN, AND 4.3' WEST OF EXISTING PAVING.
 GEODETIC SURVEY CONTROL 48AA (N 539,314.900 E 1,371,539.251)
 BRASS DISC SET ON TOP OF A CONCRETE MONUMENT, LOCATED AT ROUTE 175 SE OF TAMAR ROAD, 4.3' EAST OF EXISTING PAVING AND 14.1' WEST OF PK ON ROAD SHOULDER.
 - ALL PIPE ELEVATIONS SHOWN ARE INVERT ELEVATIONS UNLESS OTHERWISE NOTED.
 - CLEAR ALL UTILITIES BY A MINIMUM OF 12 INCHES. CLEAR ALL POLES BY 5'-0" MINIMUM OR TUNNEL AS REQUIRED UNLESS OTHERWISE NOTED. THE OWNER HAS CONTACTED THE UTILITY COMPANIES AND HAS MADE ARRANGEMENTS FOR BRACING OF POLES AS SHOWN ON DRAWINGS. IN THE EVENT THE CONTRACTOR'S WORK REQUIRES THE BRACING OF ADDITIONAL POLES, ANY COST INCURRED BY THE OWNER FOR BRACING OF ADDITIONAL POLES OR DAMAGES SHALL BE REDUCED FROM MONIES OWED THE CONTRACTOR. THE CONTRACTOR SHALL COORDINATE WITH THE UTILITY COMPANIES TO SCHEDULE THE BRACING OF THE POLES.
 - FOR DETAILS NOT SHOWN ON THE DRAWINGS, AND FOR MATERIALS AND CONSTRUCTION METHODS USE HOWARD COUNTY DESIGN MANUAL, VOLUME IV, STANDARD SPECIFICATIONS AND DETAILS FOR CONSTRUCTION (LATEST EDITION). THE CONTRACTOR SHALL HAVE A COPY OF VOLUME IV ON THE JOB.
 - WHERE TEST PITS HAVE BEEN MADE ON EXISTING UTILITIES, THEY ARE NOTED BY THE SYMBOL AT THE LOCATION OF THE TEST PIT. A NOTES OR NOTES CONTAINING THE RESULTS OF THE TEST PIT OR PITS IS INCLUDED ON THE DRAWINGS. EXISTING UTILITIES IN THE VICINITY OF THE PROPOSED WORK FOR WHICH TEST PITS HAVE NOT BEEN DUG SHALL BE LOCATED BY THE CONTRACTOR TWO WEEKS IN ADVANCE OF CONSTRUCTION OPERATION AT HIS OWN EXPENSE.
 - THE CONTRACTOR SHALL NOTIFY THE FOLLOWING UTILITY COMPANIES OR AGENCIES AT LEAST FIVE WORKING DAYS BEFORE STARTING WORK SHOWN THESE PLANS:
 AT&T (CONTRACTOR SERVICE) 1-800-252-1133
 BGE (EMERGENCY) 410-537-8773
 BUREAU OF UTILITIES 410-313-4900
 COLONIAL PIPELINE CO 410-795-1390
 MISS UTILITY 1-800-257-7777
 STATE HIGHWAY ADMINISTRATION 410-531-5533
 VERIZON 1-800-743-0033
 - TREES AND SHRUBS ARE TO BE PROTECTED FROM DAMAGE TO THE MAXIMUM EXTENT. TREES AND SHRUBS LOCATED WITHIN THE CONSTRUCTION STRIP ARE NOT TO BE REMOVED OR DAMAGED BY THE CONTRACTOR.
 - THE CONTRACTOR SHALL REMOVE TREES, STUMPS AND ROOTS ALONG THE LINE OF EXCAVATION. PAYMENT FOR SUCH REMOVAL SHALL BE INCLUDED IN THE UNIT PRICE BID FOR THE CONSTRUCTION OF THE MAIN.
 - THE CONTRACTOR SHALL NOTIFY THE BUREAU OF HIGHWAYS, HOWARD COUNTY, AT (410) 313-7450 AT LEAST FIVE WORKING DAYS BEFORE ANY OPEN CUTTING OR BORING, JACKING OF ANY COUNTY ROAD FOR LAYING WATER/SEWER MAINS OR HOUSE CONNECTIONS. THE APPROVAL OF THESE DRAWINGS WILL CONSTITUTE COMPLIANCE WITH DPW REQUIREMENTS PER SECTION 18.114(c) OF THE HOWARD COUNTY CODE.

PART II - WATER

- ALL WATER MAINS SHALL BE PVC C-900 UNLESS OTHERWISE NOTED.
- TOPS OF ALL WATER MAINS TO HAVE A MINIMUM OF 3'-6" COVER UNLESS OTHERWISE NOTED.
- VALVES ADJACENT TO TEES SHALL BE STRAPPED TO TEES.
- ALL FITTINGS SHALL BE BUTTRESSED OR ANCHORED WITH CONCRETE IN ACCORDANCE WITH THE STANDARD DETAILS UNLESS OTHERWISE PROVIDED FOR ON THE DRAWINGS.
- FIRE HYDRANTS SHALL BE SET TO THE BURY LINE ELEVATIONS SHOWN ON THE DRAWINGS. ALL FIRE HYDRANTS SHALL BE INSTALLED IN ACCORDANCE WITH STANDARD DETAILS. THE SOIL AROUND THE FIRE HYDRANT SHALL BE COMPACTED IN ACCORDANCE WITH SECTION 1000 AND 1005 OF THE STANDARD SPECIFICATIONS.
- THE CONTRACTOR SHALL NOT OPERATE ANY WATER MAIN VALVES ON THE EXISTING WATER SYSTEM.
- FOR PVC WATER MAINS, ALL RECORDS FOR THE QUALITY CONTROL AND QUALIFICATION, TEST REQUIREMENTS NOTED IN SECTION 3.1 OF THE AWWA STANDARD C-900 FOR PVC PRESSURE PIPES SHALL BE SUBMITTED WITH THE FIRE MATERIAL CERTIFICATIONS OR SHOP DRAWINGS PRIOR TO APPROVAL OF THE MATERIAL FOR USE. THE TEST RECORDS SHALL BE FOR THE PIPE TO BE INSTALLED UNDER THIS CONTRACT. ALL PVC PIPE SHALL CONTAIN MARKINGS TO ALLOW CROSS REFERENCING OF THE PIPES SUPPLIED TO THE REST OF THE RECORDS PROVIDED.
- UNLESS OTHERWISE NOTED ON THE PLANS OR IN THE SPECIFICATIONS, SEVENTEEN (17) POUND STAINLESS STEEL ANCHORS SHALL BE INSTALLED ON ALL VALVES AND METALLIC FITTINGS USED WITH PVC WATER MAINS IN ACCORDANCE WITH VOLUME IV STANDARD SPECIFICATIONS AND DETAILS FOR CONSTRUCTION. WAGNER/STANLEY ANCHORS SHALL BE INSTALLED ON ALL VALVES AND METALLIC FITTINGS INCLUDING PRESSURES AND WRENCHES. ENIC ANCHORS SHALL BE INSTALLED ON ALL STAINLESS STEEL FITTINGS AND BARGES USED WITH PVC MAINS. ALL TEES USED WITH PVC MAINS SHALL BE DUCTILE IRON. FOR FIRE SPRINKLER SYSTEMS, ALL SINGLE FAMILY DWELLING SHALL HAVE A MINIMUM OF A 1-1/2" NHC WITH A 1" OUTSIDE METER SETTING.

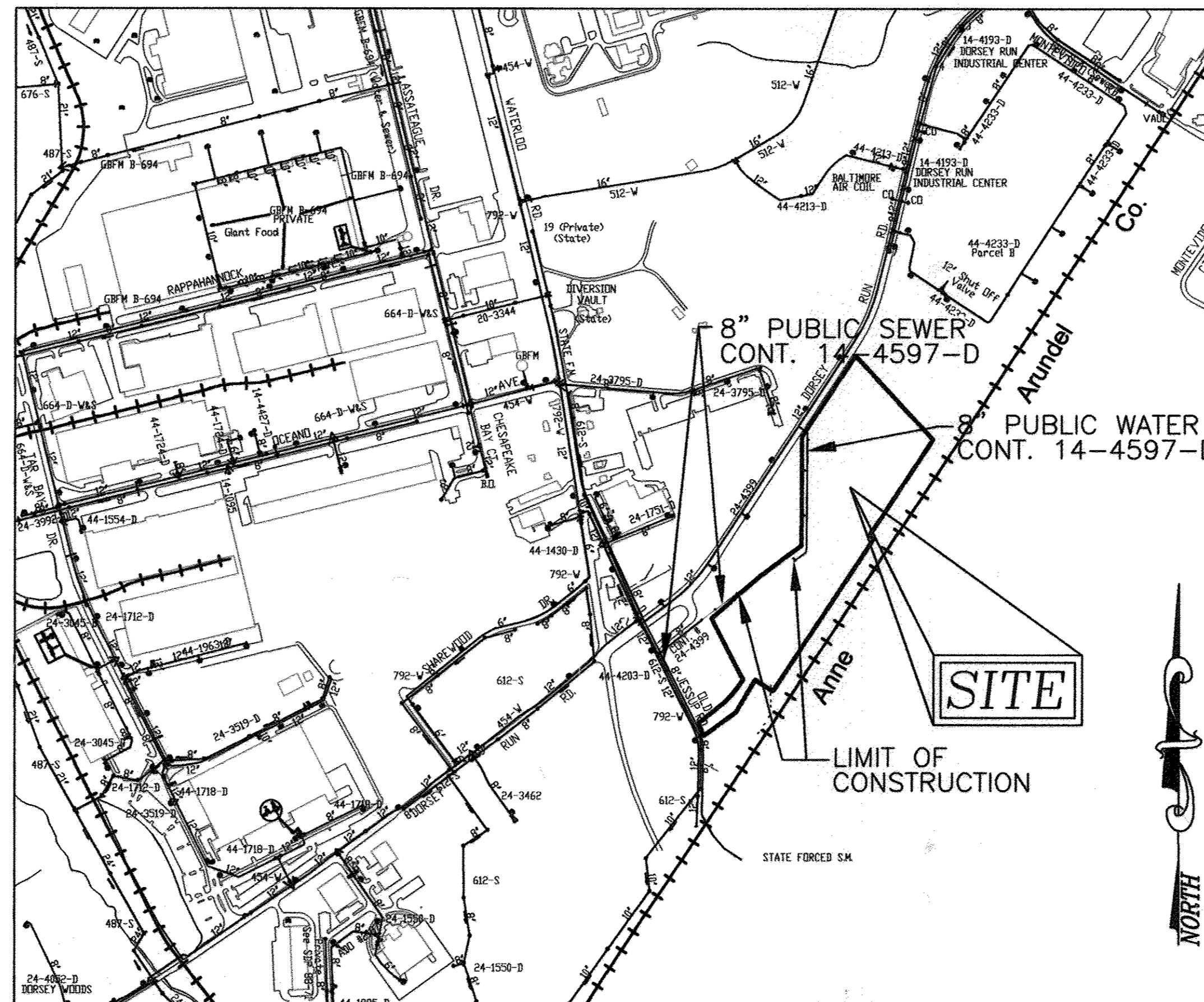
PART III - SEWER

- ALL SEWER MAINS SHALL BE D.I.P. OR P.V.C. UNLESS OTHERWISE NOTED.
- ALL MANHOLES SHALL BE 4'-0" INSIDE DIAMETER UNLESS OTHERWISE NOTED.
- FORCE MAINS SHALL BE D.I.P. ONLY.
- MANHOLES SHOWN WITH 12" AND 16" WALLS ARE FOR BRICK MANHOLES ONLY.
- MANHOLES DESIGNATED W.T. IN PLAN AND PROFILE SHALL HAVE WATERTIGHT FRAME AND COVERS, STANDARD DETAIL G5.52.
- HOUSE(S) WITH THE SYMBOL "C.N.S." INDICATES THAT CELLAR CANNOT BE SERVED.

SEDIMENT CONTROL MEASURES WILL BE IMPLEMENTED IN ACCORDANCE WITH SECTION 308 OF THE SPECIFICATIONS AND WITH SITE DEVELOPMENT PLAN SDP-09-021.

THIS DEVELOPMENT IS APPROVED FOR SOIL EROSION AND SEDIMENT CONTROL BY THE HOWARD COUNTY SOIL CONSERVATION DISTRICT.

John P. Robertson 5/22/09
 SOIL CONSERVATION DISTRICT DATE



VICINITY MAP
 SCALE: 1"=600'

WATER ZONE: 400
 TEST GRADIENT: 550

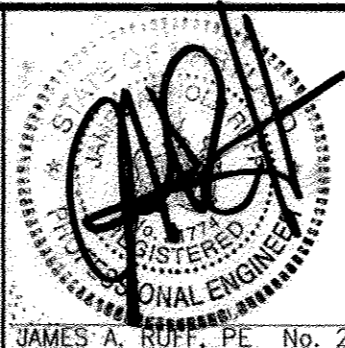
TYPE OF BUILDING :	OFFICE/WAREHOUSE
NO. OF LOTS/PARCELS :	1
NO. OF SINGLE WATER HOUSE CONNECTIONS :	2
NO. OF TWIN WATER HOUSE CONNECTIONS :	0
NO. OF SEWER HOUSE CONNECTIONS :	0
DRAINAGE AREA :	LITTLE PATUXENT RIVER

QUANTITIES				
NAME OF UTILITY CONTRACTOR : UTILITIES UNLIMITED, INC.				
SURVEY AND DRAFTING DIVISION AS-BUILT DATE :				
ITEMS	ESTIMATED	AS-BUILT		
		QUANTITIES	TYPE	MANUFACTURER/SUPPLIER
WATER				
8" WATER	2470 LF	2470	C 900	NORTH AMERICAN PIPE
6" WATER	210 LF	210	C 900	NORTH AMERICAN PIPE
8" x 6" TEE	6 EA	6	C 155	TYLER UNION
6" VALVE	6 EA	6	C 515	AMERICAN FLOW CONTROL
8" VALVE	4 EA	4	C 515	AMERICAN FLOW CONTROL
6" FIRE HYDRANT	6 EA	6	B 898	AMERICAN FLOW CONTROL
8" - 1/8" BEND	7 EA	7	C 155	TYLER UNION
8" - 1/32 BEND	2 EA	2	C 155	TYLER UNION
8" CAP & BUTTRESS	1 EA	1	C 155	TYLER UNION
8" x 8" BELL END	7 EA	7	C 153	TYLER UNION
8" x 8" TEE	3 EA	3	C 153	TYLER UNION
SEWER				
MANHOLES	3 EA	3		CONTRACTOR DECISION CORP.
8" SEWER	348 LF	350	SDR-35	NORTH AMERICAN PIPE
6" SEWER	12 LF	15	SDR-35	NORTH AMERICAN PIPE

DEPARTMENT OF PUBLIC WORKS
 HOWARD COUNTY, MARYLAND
Steve C. Coon 5/22/09
 CHIEF, BUREAU OF UTILITIES DATE

DEPARTMENT OF PLANNING & ZONING
 HOWARD COUNTY, MARYLAND
And E. Edwards 5-22-9
 CHIEF, DEVELOPMENT ENGINEERING DIVISION DATE

ROBERT H. VOGEL ENGINEERS, INC.
 ENGINEERS • SURVEYORS • PLANNERS
 8407 MAIN STREET TEL: 410.461.7666
 ELLICOTT CITY, MD 21043 FAX: 410.461.8951



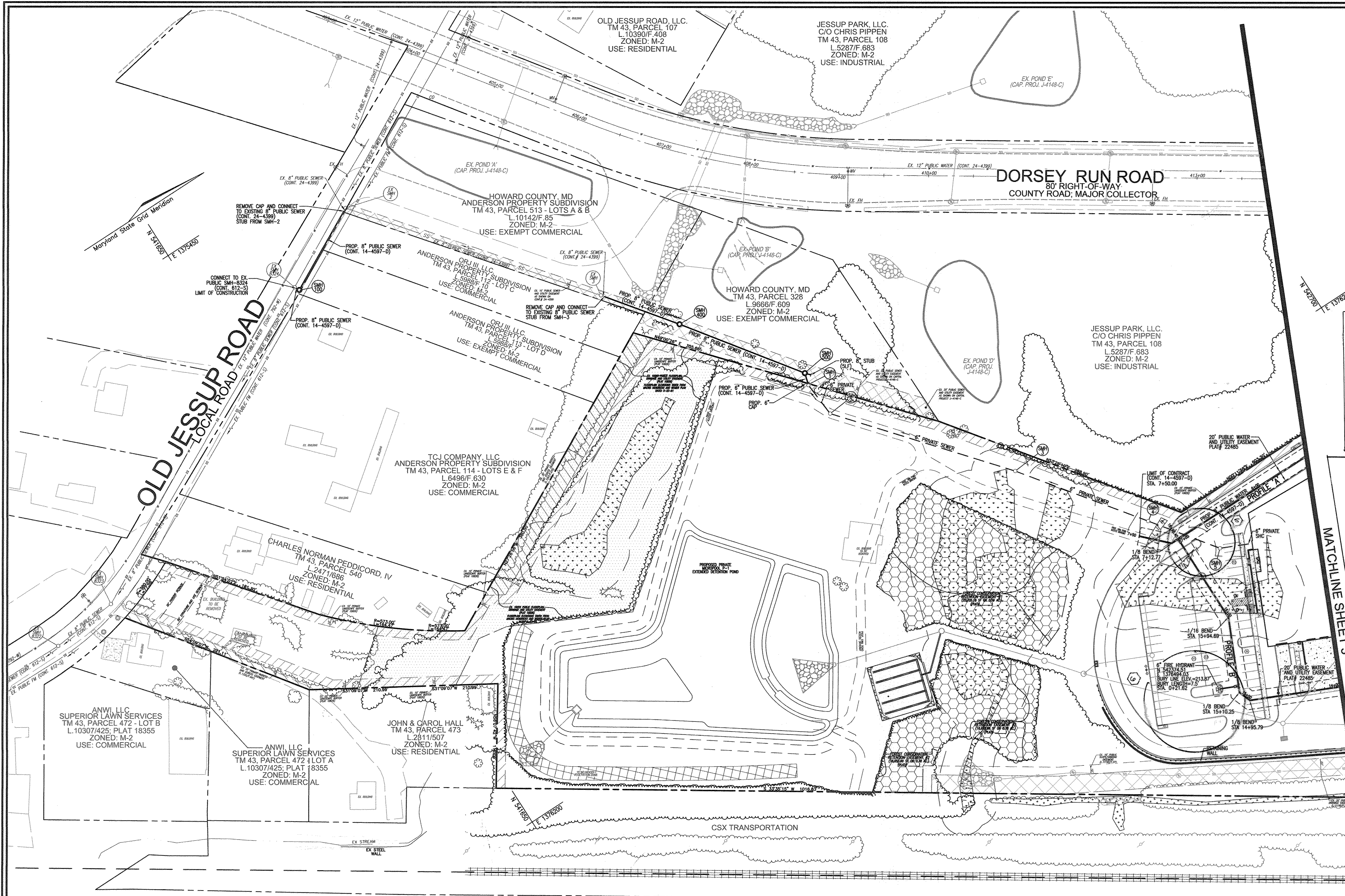
NO.	REVISION	DATE
1	REMOVE WATER MAIN SERVICE TO BLDG. B;	03/17/11
2	REMOVE BUILDING B LOWER WATER MAIN PER CHANGES TO GRADING AND STORM DRAIN. RELOCATE WATER SERVICE CONNECTION.	11/17/14
3	CONVERT SITE TO OFFICE AND WAREHOUSE. REVISE WATER SYSTEM TO LOOP AROUND BUILDING 'A'.	06-25-14
4		12/05/12
DATE:	OCT 2012	

FINAL WATER AND SEWER PLAN
COVER SHEET

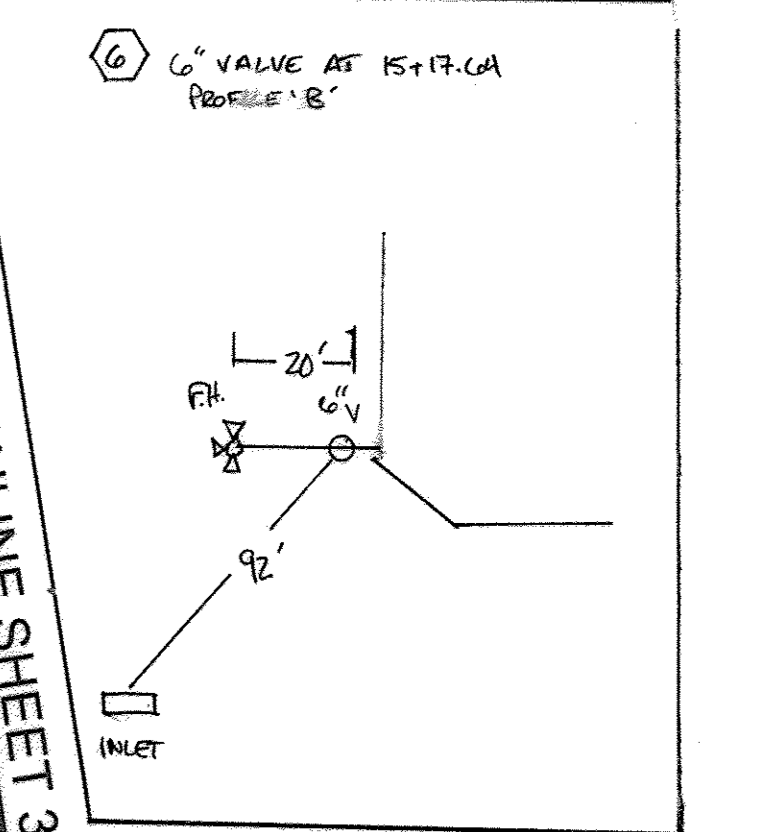
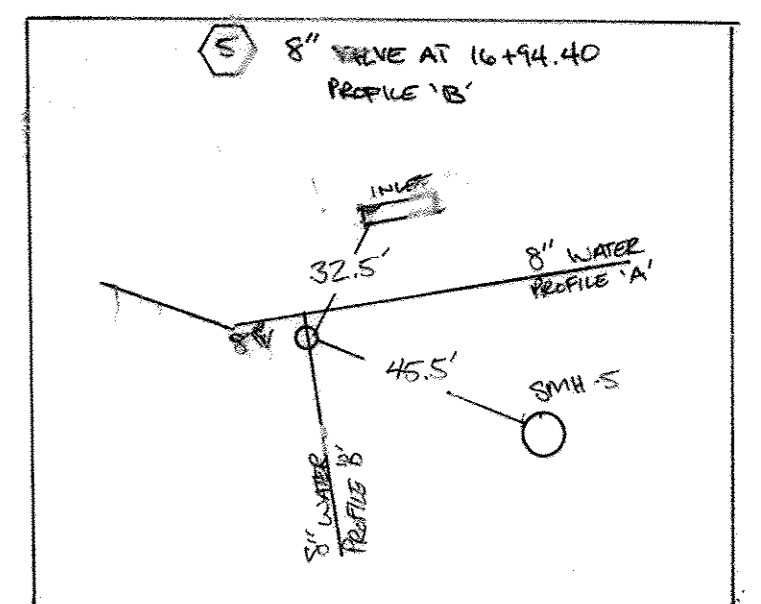
JESSUP PARK
 OFFICE/WAREHOUSE, PARCEL B
CONTRACT NO. 14-4597-D

SCALE AS SHOWN
 SHEET 1 OF 5

TAX MAP 43, GRID 22
 1ST ELECTION DISTRICT
 PARCEL 109-B
 HOWARD COUNTY, MARYLAND



- LEGEND:**
- EXISTING CURB AND GUTTER
 - PROPOSED CURB AND GUTTER
 - EXISTING UTILITY POLE
 - EXISTING LIGHT POLE
 - EXISTING MAILBOX
 - EXISTING SIGN
 - EXISTING CLEANOUT
 - EXISTING STORM DRAIN
 - EXISTING STORM DRAIN INLET
 - TREE LINE
 - EXISTING FENCE
 - PROPERTY LINE
 - RIGHT-OF-WAY LINE
 - EXISTING SANITARY MANHOLE
 - EXISTING SANITARY LINE
 - EXISTING FIRE HYDRANT
 - EXISTING WATER LINE
 - PROPOSED PRIVATE WATER
 - PROPOSED PRIVATE SEWER
 - PROPOSED PUBLIC WATER
 - PROPOSED FIRE HYDRANT
 - PROPOSED PUBLIC SEWER
 - PROPOSED PUBLIC SEWER MANHOLE
 - PROPOSED PUBLIC WATER VALVE



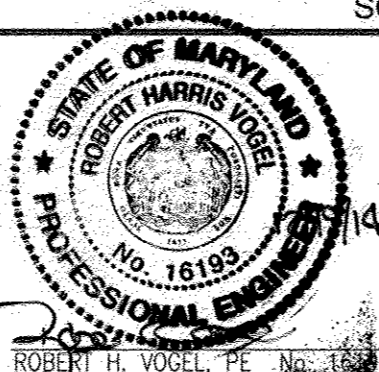
MATCHLINE SHEET 3

PLAN VIEW
SCALE: 1"=50'

DEPARTMENT OF PUBLIC WORKS
HOWARD COUNTY, MARYLAND

DEPARTMENT OF PLANNING & ZONING
HOWARD COUNTY, MARYLAND

ROBERT H. VOGEL ENGINEERING, INC.
ENGINEERS • SURVEYORS • PLANNERS
8407 MAIN STREET TEL: 410.461.7666
ELLCOTT CITY, MD 21043 FAX: 410.461.8961



NO.	REVISION	DATE
1	AS-BUILTS	05-12-12
2	REMOVE WATER MAIN SERVICE TO BUILDING B; REMOVE BUILDING B	11-17-14
3	LOWER WATER MAIN PER CHANGES TO GRADING AND STORM DRAIN; RELOCATE WATER SERVICE CONNECTION	06-25-14
4	CONVERT SITE TO OFFICE AND WAREHOUSE. REVISE WATER SYSTEM TO LOOP AROUND BUILDING A.	12-05-12

**FINAL WATER AND SEWER PLAN
PLAN VIEW**

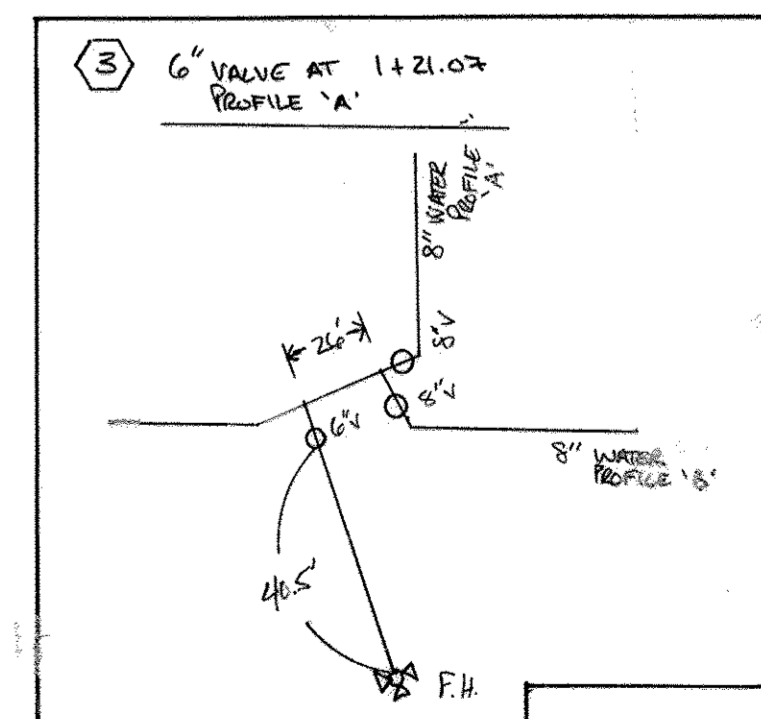
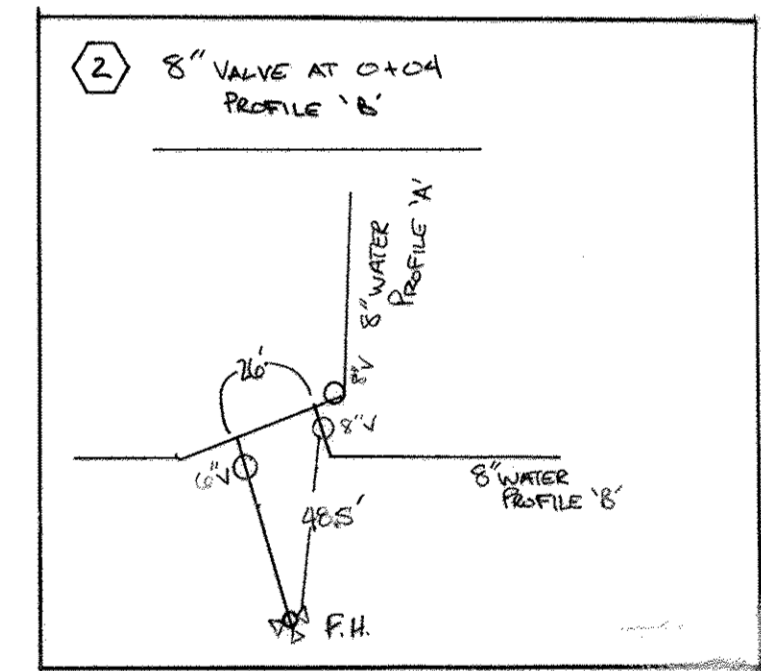
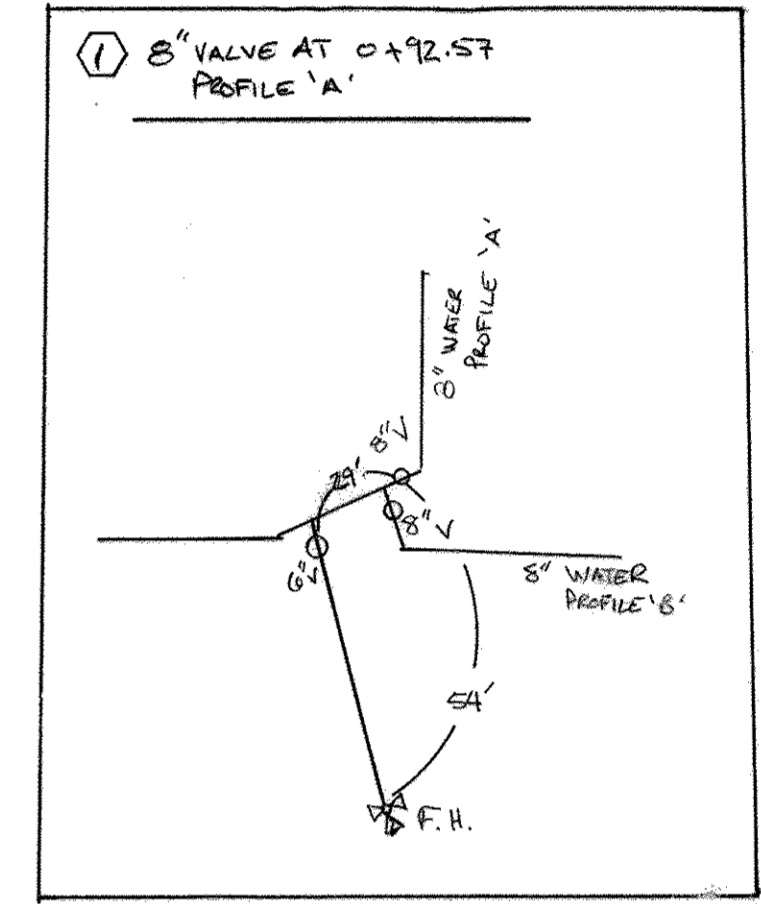
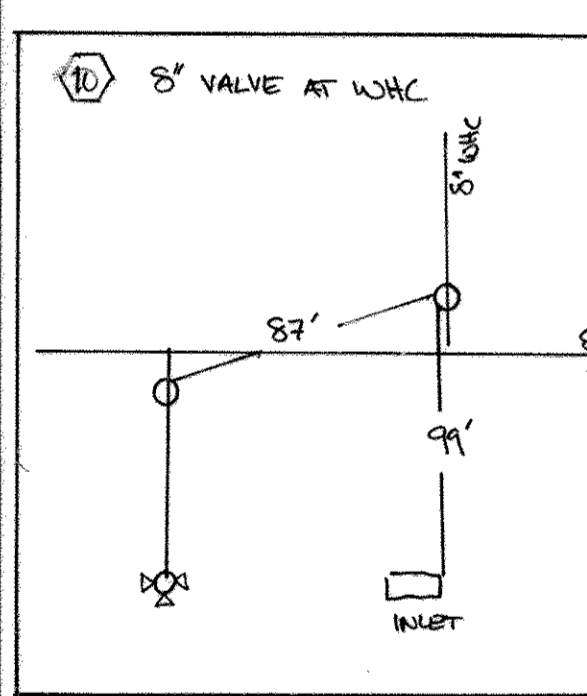
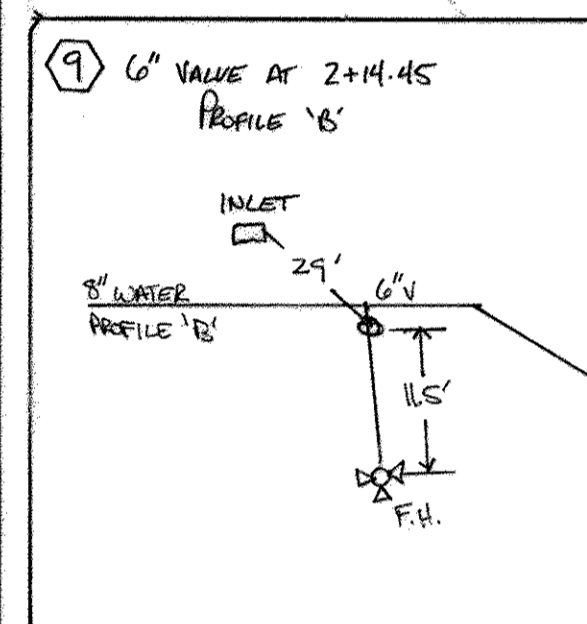
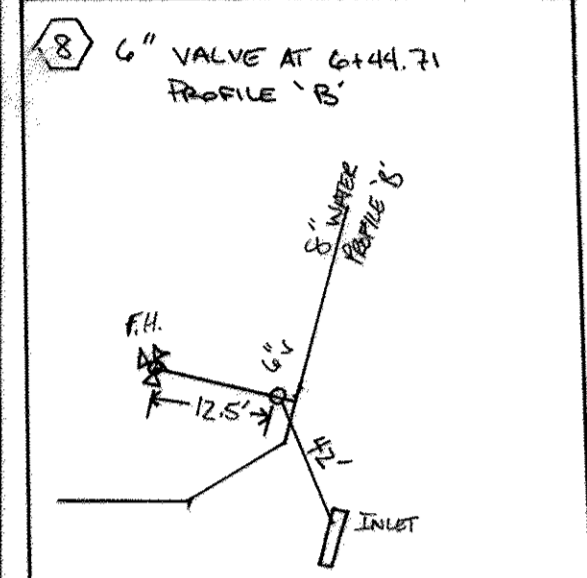
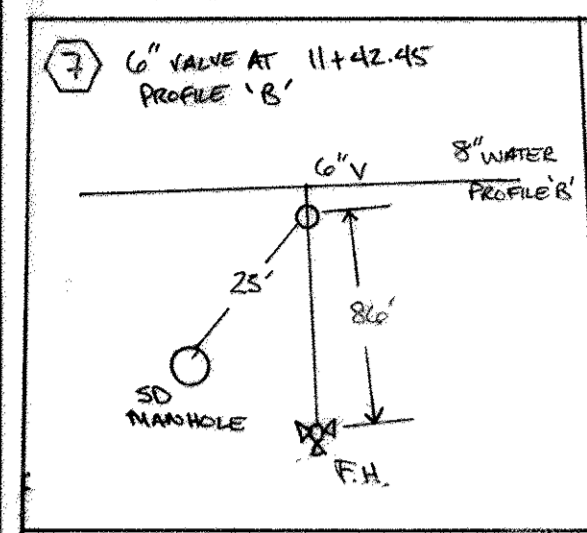
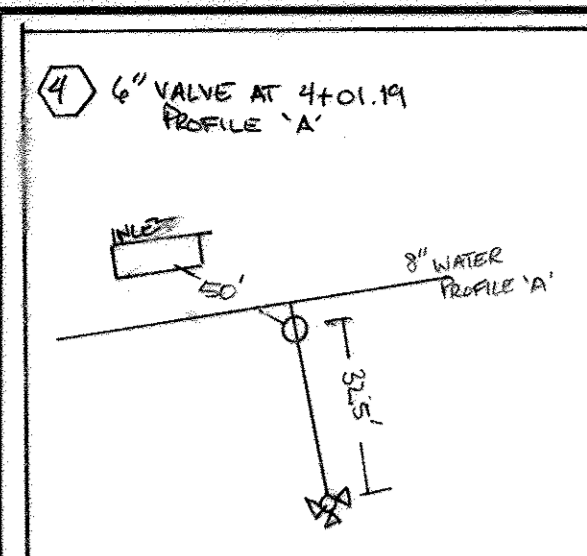
**JESSUP PARK
WAREHOUSE AND OFFICE, PARCEL B
CONTRACT NO. 14-4597-D**

SCALE AS SHOWN
SHEET 2 OF 5

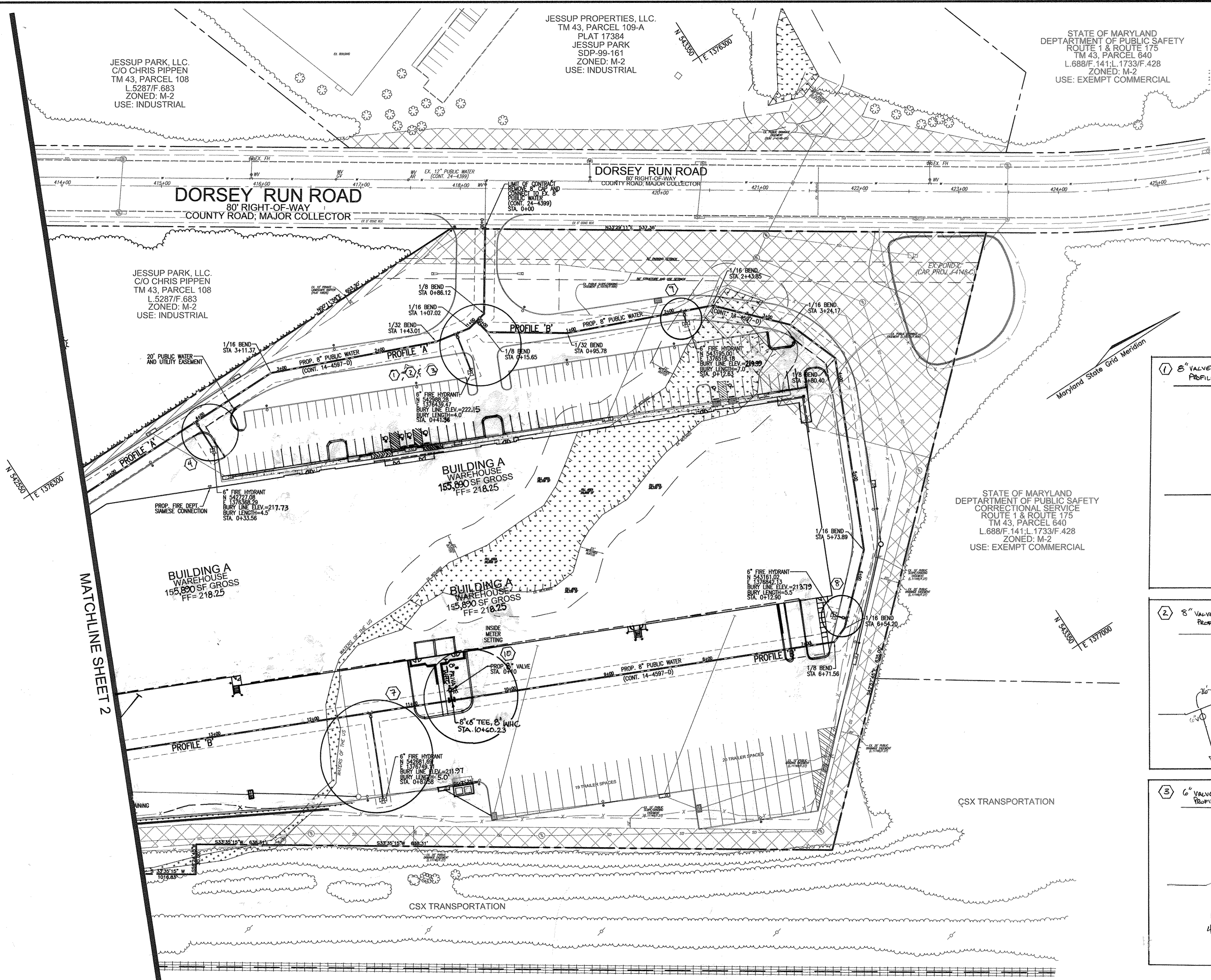
OWNER
DRR DEVELOPMENT, LLC
801 GRAND AVENUE
DES MOINES, IA 50392
C/O DAVID GRAVES
515-248-4241

DEVELOPER
RIDGE DEVELOPMENT COMPANY, LLC
225 WEST WASHINGTON, SUITE 1550
CHICAGO, IL 60606
C/O PHILLIP ADAMSKI
312-257-2851

TAX MAP 43, GRID 22
1ST ELECTION DISTRICT
PARCEL 109-B
HOWARD COUNTY, MARYLAND



- LEGEND:**
- EXISTING CURB AND GUTTER
 - PROPOSED CURB AND GUTTER
 - EXISTING UTILITY POLE
 - EXISTING LIGHT POLE
 - EXISTING MAILBOX
 - EXISTING SIGN
 - EXISTING CLEANOUT
 - EXISTING STORM DRAIN
 - EXISTING STORM DRAIN INLET
 - TREELINE
 - EXISTING FENCE
 - PROPERTY LINE
 - RIGHT-OF-WAY LINE
 - EXISTING SANITARY MANHOLE
 - EXISTING SANITARY LINE
 - EXISTING FIRE HYDRANT
 - EXISTING WATER LINE
 - PROPOSED PRIVATE WATER
 - PROPOSED PRIVATE SEWER
 - PROPOSED PUBLIC WATER
 - PROPOSED FIRE HYDRANT
 - PROPOSED PUBLIC SEWER
 - PROPOSED SEWER MANHOLE
 - PROPOSED PUBLIC WATER VALVE



PLAN VIEW
SCALE: 1"=50'

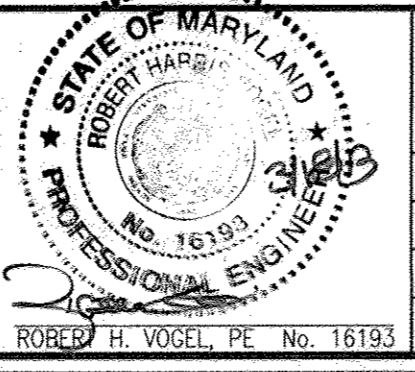
DEPARTMENT OF PUBLIC WORKS
HOWARD COUNTY, MARYLAND

Shirley C. ...
CHIEF, BUREAU OF UTILITIES

DEPARTMENT OF PLANNING & ZONING
HOWARD COUNTY, MARYLAND

...
CHIEF, DEVELOPMENT ENGINEERING DIVISION

ROBERT H. VOGEL ENGINEERING, INC.
ENGINEERS • SURVEYORS • PLANNERS
8407 MAIN STREET TEL: 410.461.7666
ELLCOTT CITY, MD 21043 FAX: 410.461.8961



PROFESSIONAL CERTIFICATE	3	As-6012	03-13-11
I HEREBY CERTIFY THAT THESE DOCUMENTS WERE PREPARED OR APPROVED BY ME, AND THAT I AM A DULY LICENSED PROFESSIONAL ENGINEER UNDER THE LAWS OF THE STATE OF MARYLAND, LICENSE NO. 16193, EXPIRATION DATE: 06-27-2014.	2	UNDER WATER MAIN PER CHANGES TO GRADING AND STORM DRAIN, RELOCATE WATER SERVICE CONNECTION	06-25-14
DES: DZ	1	CONVERT SITE TO OFFICE AND WAREHOUSE. REVISE	12-05-12
DRN: DZ			
CHK: RHV			
DATE: OCTOBER 2012	NO.	REVISION	DATE

**FINAL WATER AND SEWER PLAN
PLAN VIEW**

600' SCALE MAP NO. 43 BLOCK NO. 22

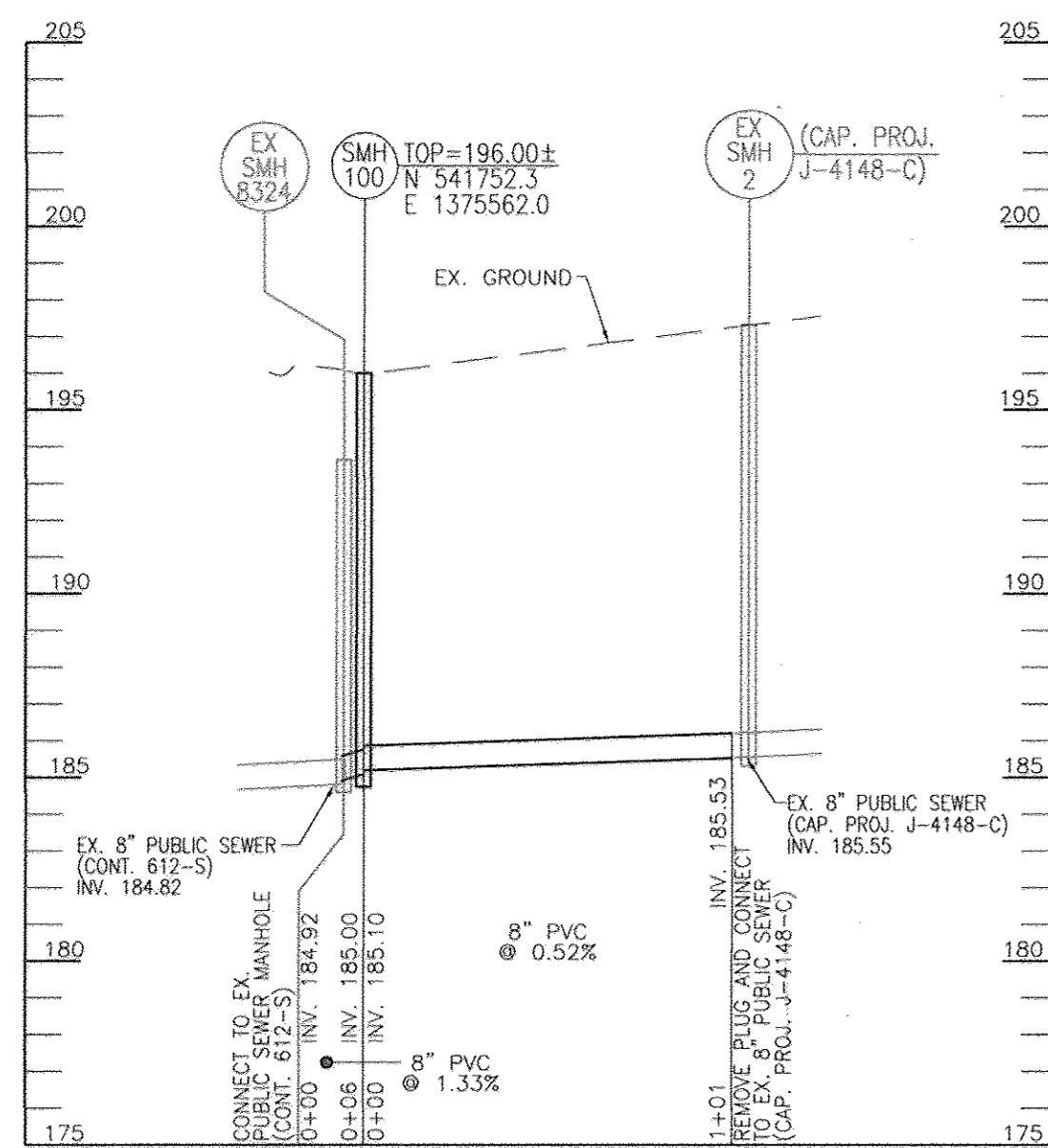
**JESSUP PARK
WAREHOUSE AND OFFICE, PARCEL B
CONTRACT NO. 14-4597-D**

OWNER/DEVELOPER
WILLIAM T. WHEELER, TRUSTEE
850 E. GUIDE ROAD, SUITE A
ROCKVILLE, MD 20850
301-252-7444

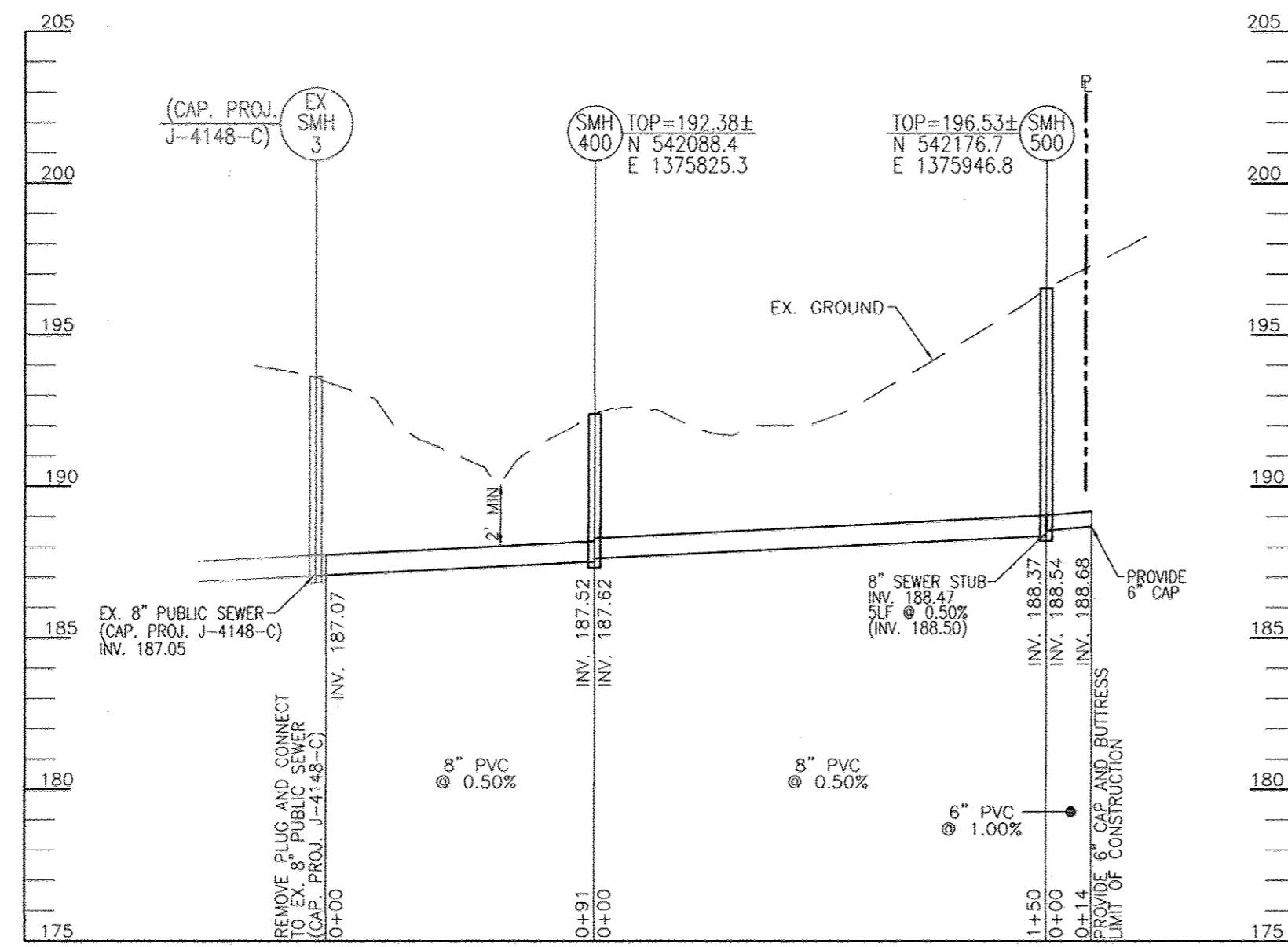
SCALE AS SHOWN
SHEET 3 OF 5

TAX MAP 43, GRID 22
1ST ELECTION DISTRICT

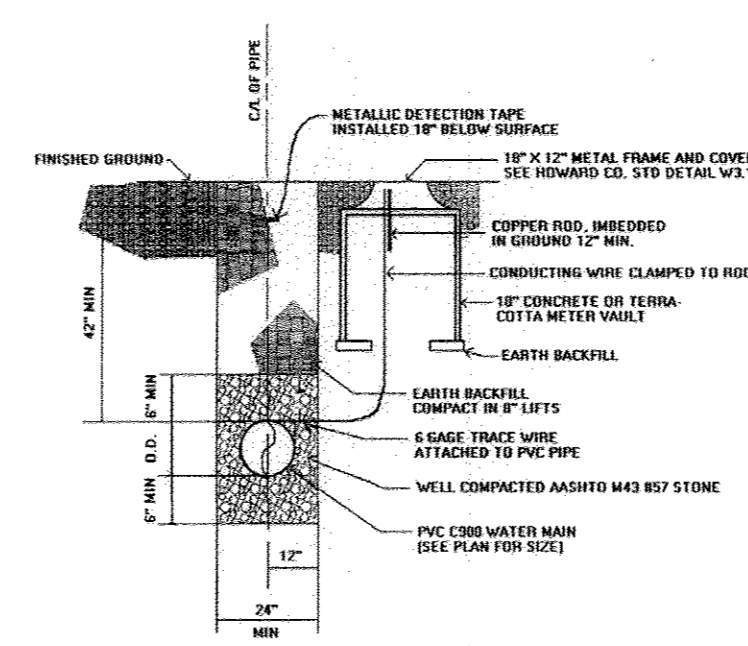
PARCEL 109-B
HOWARD COUNTY, MARYLAND



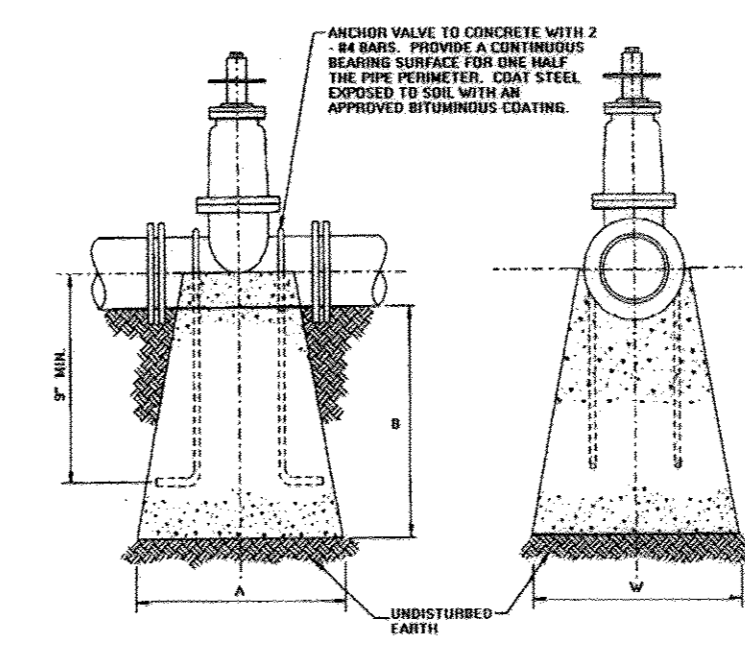
PUBLIC SEWER PROFILE
SCALE: HORIZONTAL - 1"=50'
VERTICAL - 1"=5'



PUBLIC SEWER PROFILE
SCALE: HORIZONTAL - 1"=50'
VERTICAL - 1"=5'

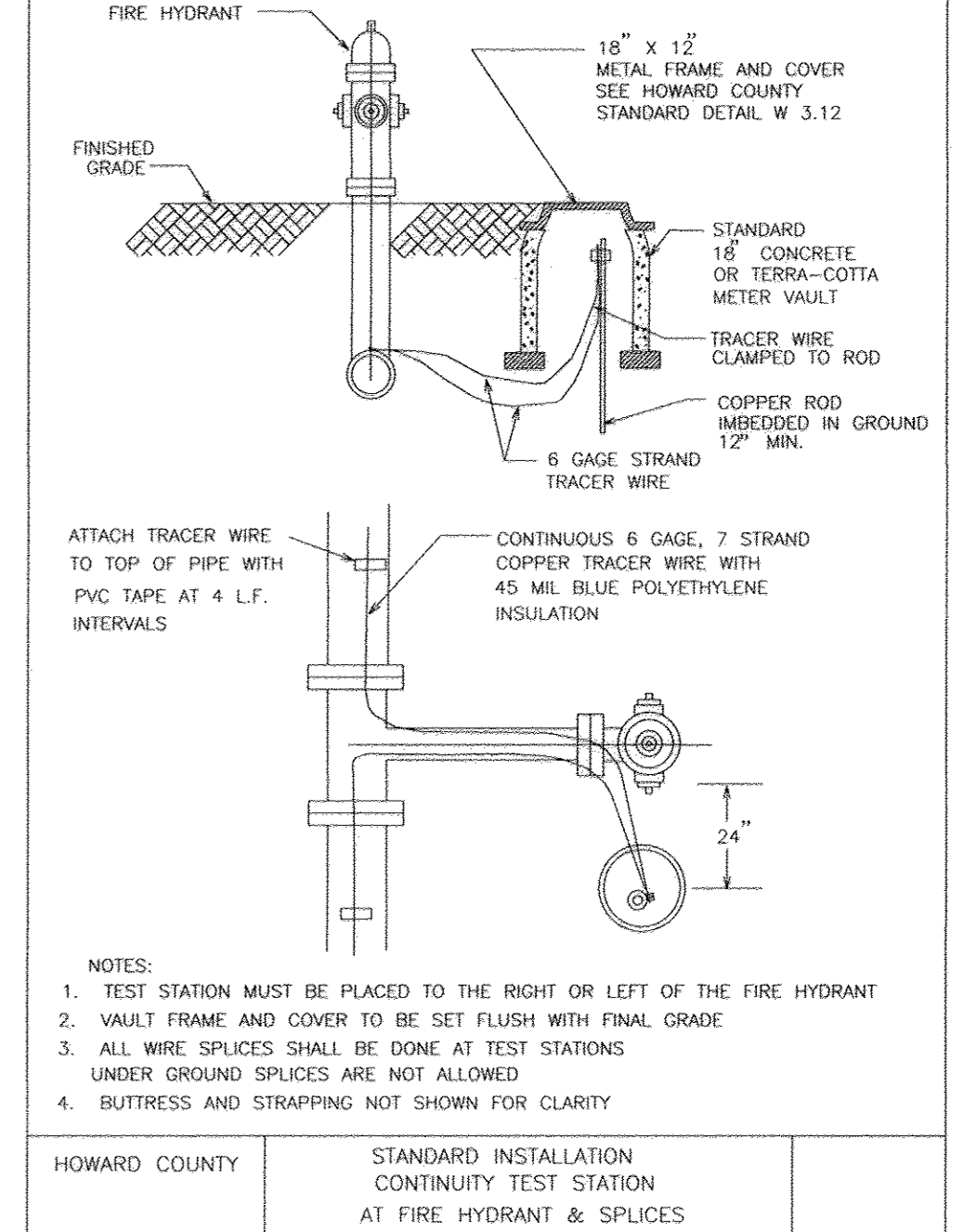


TRENCH FOR PVC PIPE AND CONTINUITY TEST STATION DETAIL



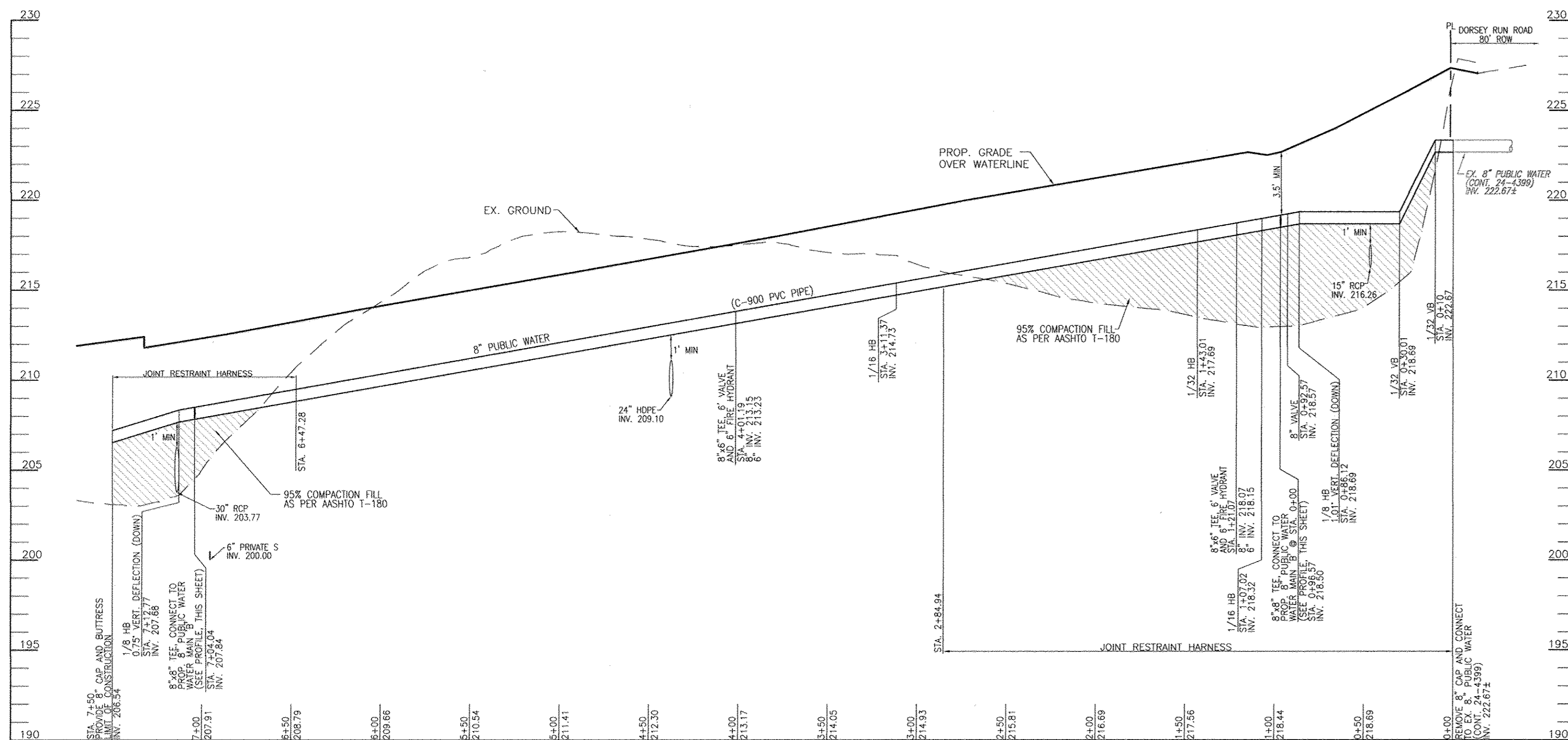
PIPE SIZE	A	B	W
4"	9"	1'-0"	1'-0"
6"	10"	1'-0"	1'-0"
8"	1'-0"	2'-0"	2'-0"
12"	1'-0"	2'-0"	2'-0"

ANCHORAGES FOR VALVES WITH PVC PIPE



- NOTES:
- TEST STATION MUST BE PLACED TO THE RIGHT OR LEFT OF THE FIRE HYDRANT
 - VAULT FRAME AND COVER TO BE SET FLUSH WITH FINAL GRADE
 - ALL WIRE SPLICES SHALL BE DONE AT TEST STATIONS UNDER GROUND SPLICES ARE NOT ALLOWED
 - BUTTRISS AND STRAPPING NOT SHOWN FOR CLARITY

HOWARD COUNTY STANDARD INSTALLATION CONTINUITY TEST STATION AT FIRE HYDRANT & SPLICES



8\"/>

WL STA.	APPURTENANCE
WL STA. 0+10.00	1/32 VB
WL STA. 0+30.1	1/32 VB
WL STA. 0+86.12	1/8 HB (1.01' DOWN)
WL STA. 0+82.57	8\"/>
WL STA. 0+86.57	8\"/>
WL STA. 1+07.02	1/16 HB
WL STA. 1+21.07	8\"/>
WL STA. 1+43.01	1/32 HB
WL STA. 3+11.37	1/16 HB
WL STA. 4+01.19	8\"/>
WL STA. 7+04.04	8\"/>
WL STA. 7+12.77	1/8 HB (0.75\"/>
WL STA. 7+50	8\"/>

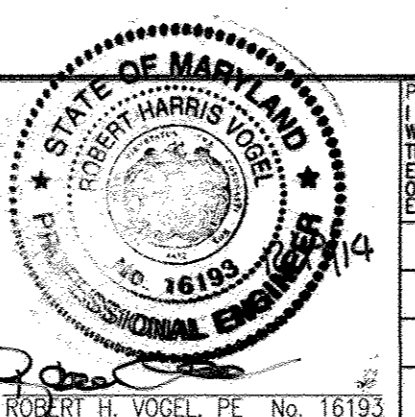
DEPARTMENT OF PUBLIC WORKS
HOWARD COUNTY, MARYLAND

Steve Clemen
11/15/15
CHIEF, BUREAU OF UTILITIES

DEPARTMENT OF PLANNING & ZONING
HOWARD COUNTY, MARYLAND

Paul Elwood
11/15/15
CHIEF, DEVELOPMENT ENGINEERING DIVISION

ROBERT H. VOGEL ENGINEERING, INC.
ENGINEERS • SURVEYORS • PLANNERS
8407 MAIN STREET TEL: 410.461.7666
ELLCOTT CITY, MD 21043 FAX: 410.461.8961



PROFESSIONAL CERTIFICATE
I HEREBY CERTIFY THAT THESE DOCUMENTS WERE PREPARED OR APPROVED BY ME AND THAT I AM A DULY LICENSED PROFESSIONAL ENGINEER UNDER THE LAWS OF THE STATE OF MARYLAND LICENSE NO. 16193 EXPIRATION DATE: 09-27-2018

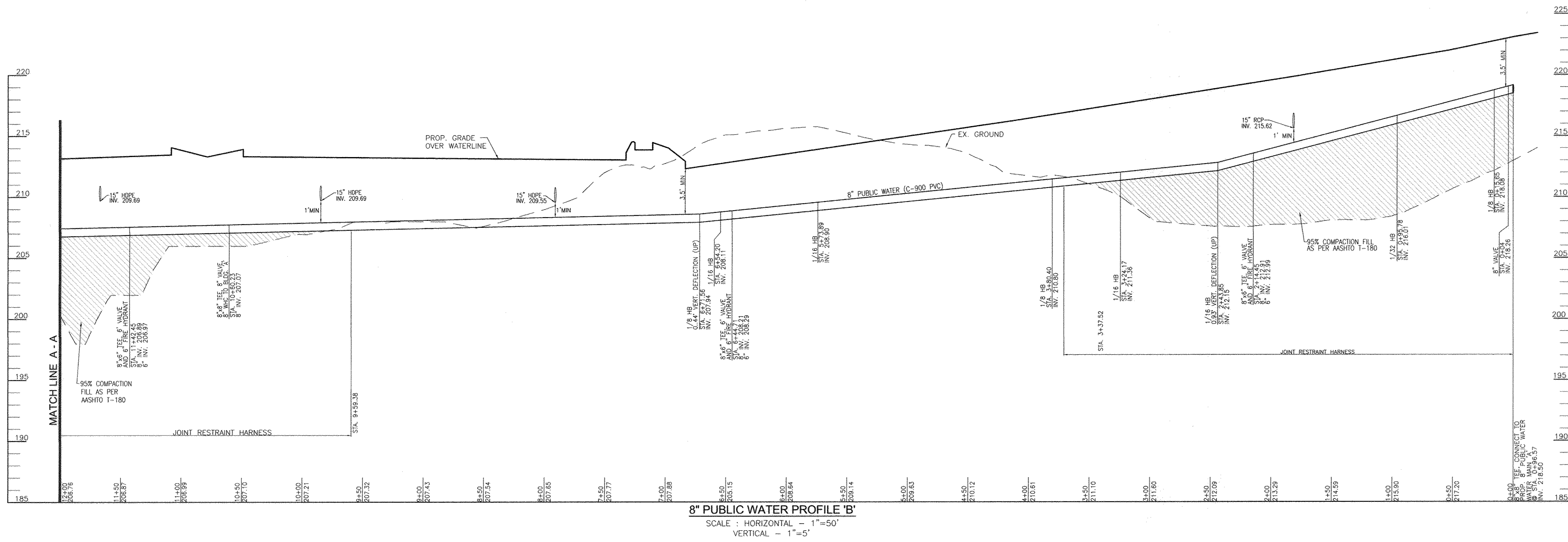
NO.	REVISION	DATE
3	REMOVE WATER MAIN SERVICE TO BUILDING B; REMOVE BUILDING B WATER SERVICE CONNECTION	11-17-14
2	LOWER WATER MAIN PER CHANGES TO GRADING AND STORM DRAIN; RELOCATE	06-25-14
1	CONVERT SITE TO OFFICE AND WAREHOUSE. REVISE WATER SYSTEM TO LOOP AROUND BUILDING A.	12-05-12

**FINAL WATER AND SEWER PLAN
WATER & SEWER PROFILES**

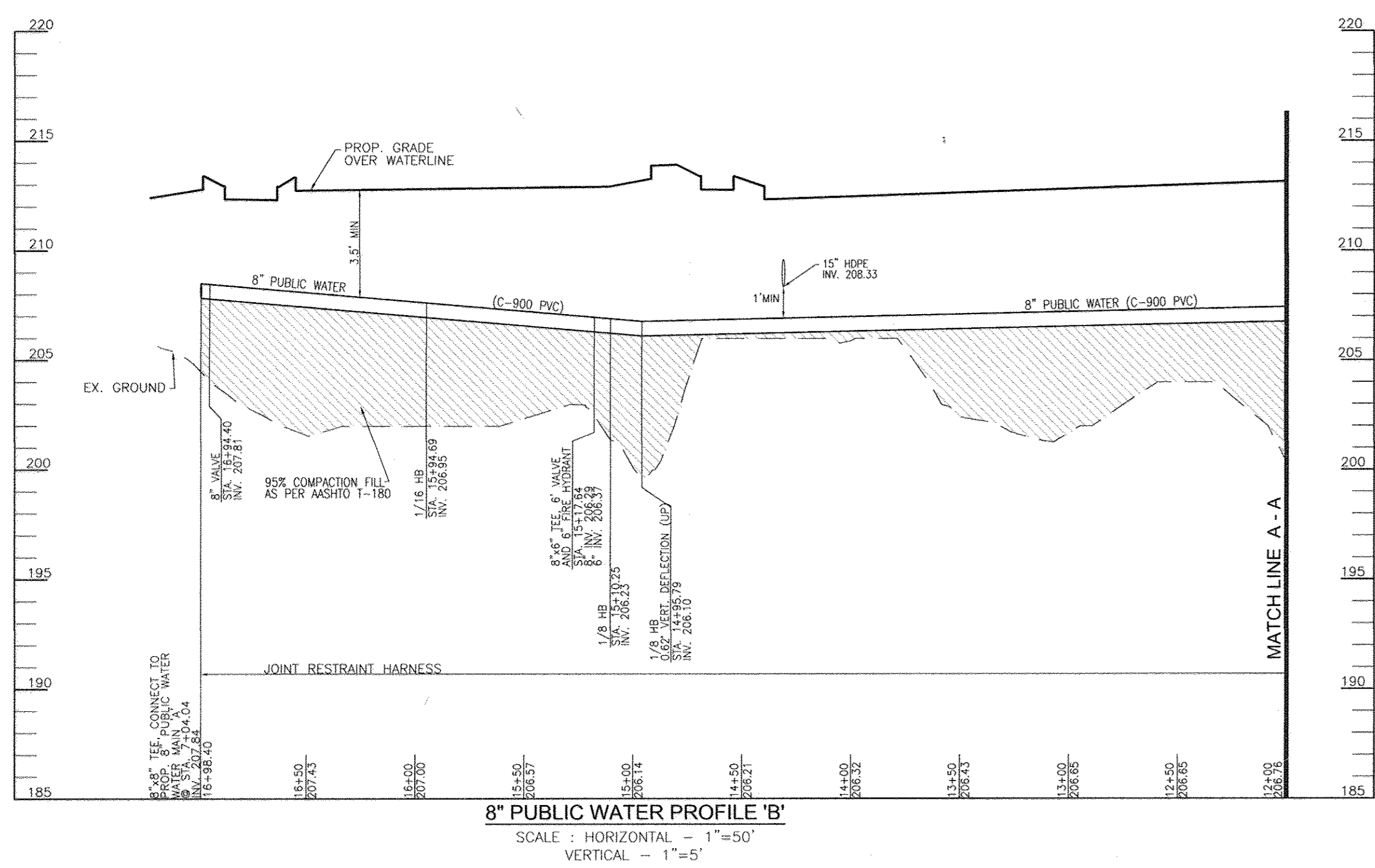
**JESSUP PARK
WAREHOUSE AND OFFICE, PARCEL B
CONTRACT NO. 14-4597-D**

SCALE AS SHOWN
SHEET 4 OF 5

TAX MAP 43, GRID 22
1ST ELECTION DISTRICT
PARCEL 109-B
HOWARD COUNTY, MARYLAND



8" PUBLIC WATER PROFILE 'B'
 SCALE : HORIZONTAL - 1"=50'
 VERTICAL - 1"=5'



8" PUBLIC WATER PROFILE 'B'
 SCALE : HORIZONTAL - 1"=50'
 VERTICAL - 1"=5'

WL STA.	APPURTENANCE
WL STA. 0+00	8"x8" TEE
WL STA. 0+04	8" VALVE
WL STA. 0+15.65	1/8" HB
WL STA. 0+25.78	1/8" HB
WL STA. 2+14.45	8" x 6" TEE, VALVE & FH
WL STA. 2+43.85	1/16" HB (0.93" DOWN)
WL STA. 3+24.17	1/16" HB
WL STA. 3+80.40	1/8" HB
WL STA. 5+73.89	1/16" HB
WL STA. 6+44.71	8" x 6" TEE, VALVE & FH
WL STA. 6+54.20	1/16" HB
WL STA. 6+71.56	1/8" HB (0.44" UP)
WL STA. 10+60.23	8" x 6" TEE, AND 6" VALVE, 10LF 6" WHC
WL STA. 11+42.45	8" x 6" TEE, VALVE & FH
WL STA. 14+95.79	1/8" HB (0.62" UP)
WL STA. 15+10.25	1/8" HB
WL STA. 15+17.84	8" x 6" TEE, VALVE & FH
WL STA. 15+94.69	1/16" HB
WL STA. 16+94.40	8" VALVE
WL STA. 16+98.40	8"x8" TEE

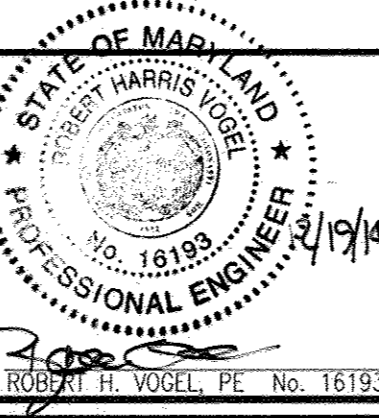
OWNER
 DRR DEVELOPMENT, LLC.
 801 GRAND AVENUE
 DES MOINES, IA 50392
 C/O DAVID GRAVES
 515-248-4241

DEVELOPER
 RIDGE DEVELOPMENT COMPANY, LLC.
 225 WEST WASHINGTON, SUITE 1550
 CHICAGO, IL 60606
 C/O PHILLIP ADAMSKI
 312-257-2881

DEPARTMENT OF PUBLIC WORKS
 HOWARD COUNTY, MARYLAND
 Chief, Bureau of Utilities
 Date: 11/15/15

DEPARTMENT OF PLANNING & ZONING
 HOWARD COUNTY, MARYLAND
 Chief, Development Engineering Division
 Date: 11/14/15

ROBERT H. VOGEL ENGINEERING, INC.
 ENGINEERS • SURVEYORS • PLANNERS
 8407 MAIN STREET TEL: 410.461.7666
 ELLICOTT CITY, MD 21043 FAX: 410.461.8961



PROFESSIONAL CERTIFICATE
 I HEREBY CERTIFY THAT THESE DOCUMENTS
 WERE PREPARED OR APPROVED BY ME, AND
 THAT I AM A DULY LICENSED PROFESSIONAL
 ENGINEER UNDER THE LAWS OF THE STATE
 OF MARYLAND, LICENSE NO. 16193
 EXPIRATION DATE 09-27-2016
 DATE: DECEMBER 2014 NO. _____

NO.	REVISION	DATE
3	REMOVE WATER MAIN SERVICE TO BUILDING B; REMOVE BUILDING B WATER SERVICE CONNECTION	11-17-14
2	LOWER WATER MAIN PER CHANGES TO GRADING AND STORM DRAIN; RELOCATE WATER SERVICE CONNECTION	06-25-14
1	CONVERT SITE TO OFFICE AND WAREHOUSE. REVISE WATER SYSTEM TO LOOP AROUND BUILDING A.	12-05-12

**FINAL WATER AND SEWER PLAN
 WATER PROFILES**

**JESSUP PARK
 WAREHOUSE AND OFFICE, PARCEL B
 CONTRACT NO. 14-4597-B**

SCALE AS SHOWN
 SHEET 5 OF 5

TAX MAP 43, GRID 22
 1ST ELECTION DISTRICT
 PARCEL 109-B
 HOWARD COUNTY, MARYLAND