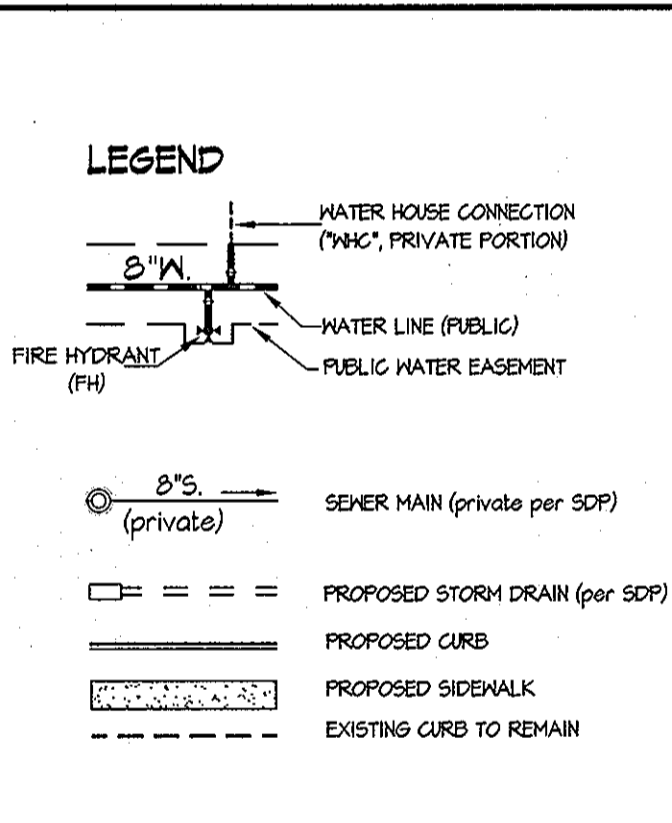


QUANTITIES				
ITEMS	QUANTITIES ESTIMATED	AS-BUILT		
		QUANTITIES	TYPE	MANUFACTURER
8" WATER	736 LF	767.5'	ODP-CL54	GRIFFIN PIPE
6" WATER	172 LF	112'	ODP-CL54	GRIFFIN PIPE
8" 1/2 BEND	1 EA.	1	MS 1 1/4 BEND	SIGMA
8" 1/2 HB	2 EA.	2	MS 45 BEND	SIGMA
8" 1/2 HB	1 EA.	1	MS 1 1/4 BEND	SIGMA
8" 1/2 FIT	5 EA.	4	MS HOUSING	SIGMA
8" 1/2 TEE	1 EA.	1	MT TEE	SIGMA
8" 1/2 T.S.V.	1 EA.	1	TAPPING VALVE	FORD METER BOX
8" VALVE	2 EA.	2	GATE VALVE	KENNEDY VALVE
6" VALVE	4 EA.	4	GATE VALVE	KENNEDY VALVE
6" TAPPING VALVE	1 EA.	1	TAPPING VALVE	KENNEDY VALVE
8" SEWER	364 L.F.	285'	PVC-SOR-35	NORTH AMERICAN
8" CAP	1 EA.	1	PVC-SOR-35	PLASTIC TRENDS
5" FIRE HYDRANT	2 EA.	2	5" S"	KENNEDY VALVE
6" FIRE HYDRANT	3 EA.	3	6" O"	KENNEDY VALVE
8" SLEEVE	5 EA.	3	MS SLEEVE	SIGMA
8" CAP	2 EA.	2	MS CAP	SIGMA

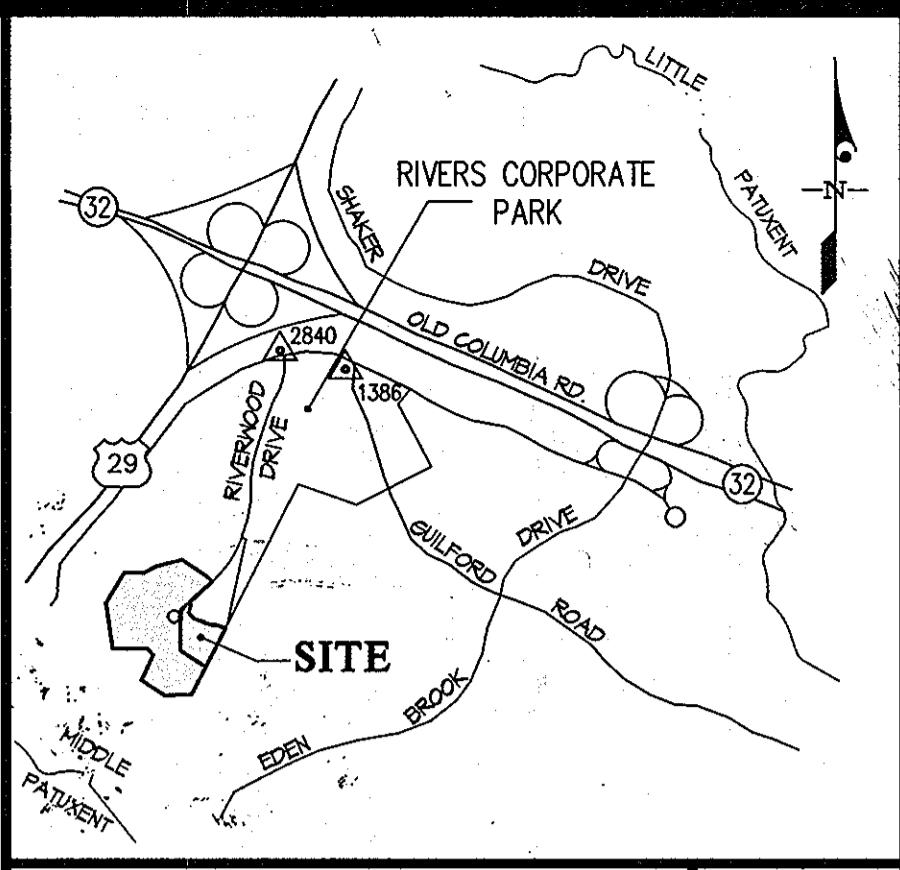
NAME OF UTILITY CONTRACTOR: **GAINES**

SURVEY AND DRAFTING DIV. CHECKBOX: AS-BUILT DATE: 4/1/2011

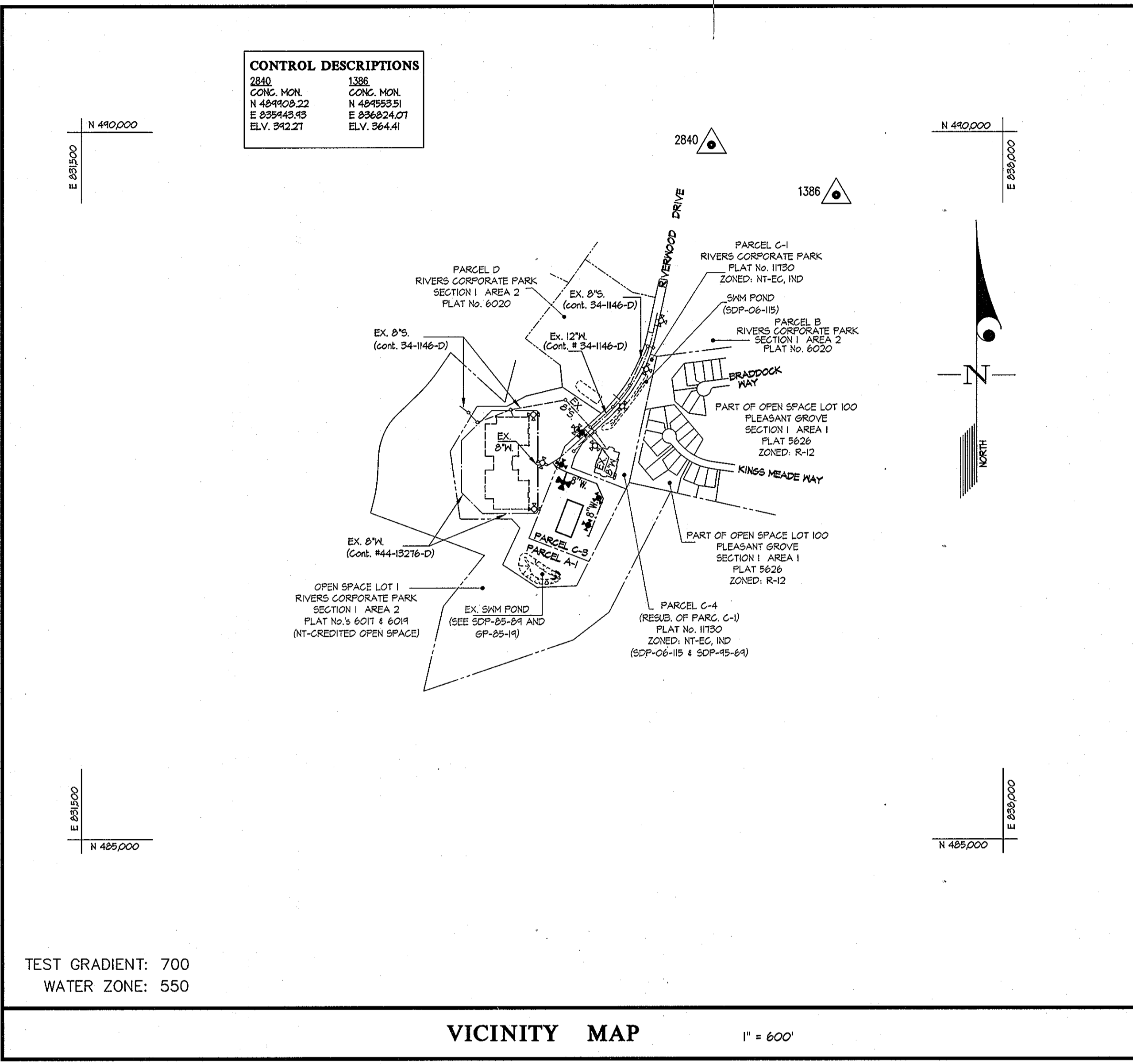


SHEET INDEX	
1.	TITLE SHEET
2.	WATER EXTENSION PLAN
3.	WATER EXTENSION PROFILE

TYPE OF BUILDING	2 COMMERCIAL BUILDINGS
NUMBER OF UNITS	2
NUMBER OF S.H.C.'s	2
NUMBER OF W.H.C.'s	2
AREA OF COMMERCIAL LOT/PARCEL	24,84±
SEWER SHED	LITTLE PATUXENT WRP
PUMPING STATION	N/A



VICINITY MAP 1" = 2000' ADC MAP 19, GRID EI



VICINITY MAP 1" = 600'

- GENERAL NOTES**
- PART I**
- APPROXIMATE LOCATIONS OF EXISTING MAINS ARE SHOWN. THE CONTRACTOR SHALL TAKE ALL NECESSARY PRECAUTIONS TO PROTECT EXISTING MAINS AND SERVICES AND MAINTAIN UNINTERRUPTED SERVICE. ANY DAMAGE INCURRED SHALL BE REPAIRED IMMEDIATELY TO THE SATISFACTION OF THE ENGINEER AT THE CONTRACTOR'S EXPENSE.
  - EXISTING TOPOGRAPHY AND FEATURES WERE DERIVED FROM SDP-45-061, AVAILABLE PUBLIC RECORDS AND FROM SURVEY BY GUTSCHICK, LITTLE & WEBER, P.A. DONE IN JANUARY, 2006.
  - HORIZONTAL AND VERTICAL SURVEY CONTROLS:
    - THE COORDINATES SHOWN ON THE DRAWINGS ARE BASED ON MARYLAND STATE REFERENCE SYSTEM NAD 83/91 AS PROJECTED BY HOWARD COUNTY GEODETIC CONTROL STATIONS No. 2840 AND No. 1386.
    - ALL VERTICAL CONTROLS ARE BASED ON NAVD 83. VERTICAL CONTROLS PROVIDED ON DRAWINGS ARE 2840 & 1386.
    - ALL PIPE ELEVATIONS SHOWN ARE INVERT ELEVATIONS UNLESS OTHERWISE NOTED ON THE PLANS.
  - CLEAR ALL UTILITIES BY A MINIMUM OF 12 INCHES. CLEAR ALL POLES BY 5'-0" MINIMUM OR TUNNEL AS REQUIRED UNLESS OTHERWISE NOTED. THE OWNER HAS CONTACTED THE UTILITY COMPANIES AND HAS MADE ARRANGEMENTS FOR BRACING OF POLES AS SHOWN ON THE DRAWINGS. IN THE EVENT THE CONTRACTOR'S WORK REQUIRES BRACING OF ADDITIONAL POLES, ANY COST INCURRED BY THE OWNER FOR THE BRACING OF ADDITIONAL POLES OR DAMAGES SHALL BE DEDUCTED FROM MONIES OWED THE CONTRACTOR. THE CONTRACTOR SHALL COORDINATE WITH THE UTILITY COMPANIES TO SCHEDULE THE BRACING OF THE POLES.
  - FOR DETAILS NOT SHOWN ON THE DRAWING, AND FOR MATERIALS AND CONSTRUCTION METHODS, USE HOWARD COUNTY DESIGN MANUAL, VOLUME IV, STANDARD SPECIFICATIONS AND DETAILS FOR CONSTRUCTION (LATEST EDITION). THE CONTRACTOR SHALL HAVE A COPY OF VOLUME IV ON THE JOB.
  - WHERE TEST PITS HAVE BEEN MADE ON EXISTING UTILITIES, THEY ARE NOTED BY THE SYMBOL (S) AT THE LOCATIONS OF THE TEST PITS. A NOTE OR NOTES CONTAINING THE RESULTS OF THE TEST PIT OR PITS IS INCLUDED ON THE DRAWINGS. EXISTING UTILITIES IN THE VICINITY OF THE PROPOSED WORK FOR WHICH TEST PITS HAVE NOT BEEN DUG SHALL BE LOCATED BY THE CONTRACTOR TWO WEEKS IN ADVANCE OF CONSTRUCTION OPERATIONS AT HIS OWN EXPENSE.
  - THE CONTRACTOR SHALL NOTIFY THE FOLLOWING UTILITY COMPANIES OR AGENCIES AT LEAST FIVE WORKING DAYS BEFORE STARTING WORK ON THESE PLANS:
 

AT&T	1-800-252-1133
BGE (CONTRACTOR SERVICES)	410-850-4620
BGE (UNDER GROUND DAMAGE CONTROL)	410-685-1400
BUREAU OF UTILITIES	410-313-4900
COLONIAL PIPELINE CO.	410-745-1340
MISS UTILITY	1-800-251-TTTT
STATE HIGHWAY ADMINISTRATION	410-531-5533
VERIZON	1-800-743-0033 / 410-224-4210
  - TREES AND SHRUBS ARE TO BE PROTECTED FROM DAMAGE TO THE MAXIMUM EXTENT. TREES AND SHRUBS LOCATED WITHIN THE CONSTRUCTION AREA STRIP ARE NOT TO BE REMOVED OR DAMAGED BY THE CONTRACTOR.
  - THE CONTRACTOR SHALL REMOVE TREES, STUMPS AND ROOTS ALONG THE LINE OF EXCAVATION. PAYMENT FOR SUCH REMOVAL SHALL BE INCLUDED IN THE UNIT PRICE BID FOR CONSTRUCTION OF THE MAIN.
  - THE CONTRACTOR SHALL NOTIFY THE BUREAU OF HIGHWAYS, HOWARD COUNTY, AT (410)-313-7480 AT LEAST FIVE WORKING DAYS BEFORE OPEN CUTTING OR BORING/JACKING OF ANY COUNTY ROAD FOR LAYING WATER/SEWER MAINS OR HOUSE CONNECTIONS. THE APPROVAL OF THESE DRAWINGS WILL CONSTITUTE COMPLIANCE WITH DPW REQUIREMENTS PER SECTION 18.114(g) OF THE HOWARD COUNTY CODE.
- PART II - WATER**
- ALL MAINS SHALL BE D.I.P. CLASS 54 UNLESS OTHERWISE NOTED.
  - TOPS OF ALL WATER MAINS SHALL HAVE A MINIMUM OF 3'-6" OF COVER UNLESS OTHERWISE NOTED.
  - VALVES ADJACENT TO TEES SHALL BE STRAPPED TO TEES.
  - ALL FITTINGS SHALL BE BUTTRESSED OR ANCHORED WITH CONCRETE IN ACCORDANCE WITH STANDARD DETAILS UNLESS OTHERWISE PROVIDED FOR ON THE DRAWINGS.
  - FIRE HYDRANTS SHALL BE SET TO THE BURY LINE ELEVATIONS SHOWN ON THE DRAWINGS. ALL FIRE HYDRANTS SHALL BE RESTRAINED AND BUTTRESSED OR ANCHORED WITH CONCRETE IN ACCORDANCE WITH THE STANDARD DETAILS. THE SOIL AROUND THE FIRE HYDRANT SHALL BE COMPACTED IN ACCORDANCE WITH SECTION 1000 AND 1005 OF THE STANDARD SPECIFICATIONS.
  - THE CONTRACTOR SHALL NOT OPERATE ANY WATER MAIN VALVES ON THE EXISTING WATER SYSTEM.
  - ALL WATER HOUSE CONNECTIONS SHALL BE FOR INSIDE METER SETTING UNLESS OTHERWISE NOTED ON PLANS OR IN SPECIFICATIONS.
  - FOR SPRINKLER SYSTEM FOR ALL TOWN HOMES OR MULTI-FAMILY DWELLING UNITS SHOULD HAVE A MINIMUM OF 1' CONNECTION WITH A 3/4" METER.
- PART III - SEWER**
- ALL SEWER MAINS SHALL BE D.I.P. OR P.V.C. UNLESS OTHERWISE NOTED.
  - ALL MANHOLES SHALL BE 4'-0" INSIDE DIAMETER UNLESS OTHERWISE NOTED.
  - FORCE MAINS SHALL BE D.I.P. ONLY.
  - MANHOLES SHOWN WITH THE 12" AND 16" HALLS ARE FOR BRICK MANHOLES ONLY.
  - MANHOLES DESIGNATED W.T. IN PLAN AND PROFILE SHALL HAVE WATERTIGHT FRAME AND COVER, STANDARD DETAIL 05.52. WHERE WATERTIGHT MANHOLE FRAMES AND COVERS ARE USED, SET TOP OF FRAME 1'-6" ABOVE FINISHED GRADE UNLESS OTHERWISE NOTED ON THE DRAWINGS.
  - HOUSE(S) WITH THE SYMBOL "C.N.S." INDICATES THE CELLAR CANNOT BE SERVED.

CONTRACT No. 24-4589-D  
 RIVERS CORPORATE PARK  
 SECTION 1 AREA 2  
 PARCELS A-1 and C-3  
 HOWARD COUNTY, MARYLAND  
 DEPARTMENT OF PUBLIC WORKS

OWNER/DEVELOPER  
 COPT Riverwood, LLC  
 c/o COPT DEVELOPMENT SERVICES, LLC  
 6711 COLUMBIA GATEWAY DRIVE, SUITE 300  
 COLUMBIA, MD 21046  
 Phone: 443-285-5649  
 Attn: SEAN MOORE

SEDIMENT CONTROL MEASURES WILL BE IMPLEMENTED IN ACCORDANCE WITH SECTION 219 OF THE SPECIFICATIONS & WITH SITE DRAWINGS SDP-08-092; DRAWINGS FOR SEDIMENT & EROSION CONTROL.

U.S.D.A. NATURAL RESOURCES CONSERVATION SERVICE

THIS DEVELOPMENT PLAN IS APPROVED FOR SOIL EROSION AND SEDIMENT CONTROL BY THE HOWARD SOIL CONSERVATION DISTRICT.

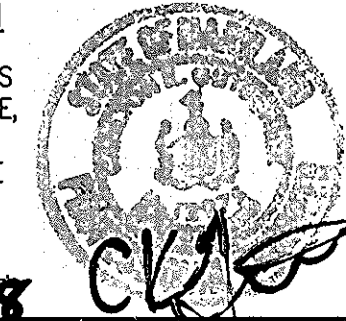
APPROVED: *John P. Koutan* 9-30-08  
 HOWARD S.C.D. Date

DEPARTMENT OF PUBLIC WORKS  
 HOWARD COUNTY, MARYLAND  
 CHIEF, BUREAU OF UTILITIES  
 DATE: 4/24/08

DEPARTMENT OF PLANNING AND ZONING  
 HOWARD COUNTY, MARYLAND  
 CHIEF, DEVELOPMENT ENGINEERING DIVISION  
 DATE: 4/1/11

GLWGUTSCHICK LITTLE & WEBER, P.A.  
 CIVIL ENGINEERS, LAND SURVEYORS, LAND PLANNERS, LANDSCAPE ARCHITECTS  
 3909 NATIONAL DRIVE - SUITE 250 - BURTOWNSVILLE OFFICE PARK  
 BURTOWNSVILLE, MARYLAND 20886  
 TEL: 301-421-4024 BAL: 410-880-1820 DC/VA: 301-989-2524 FAX: 301-421-4186

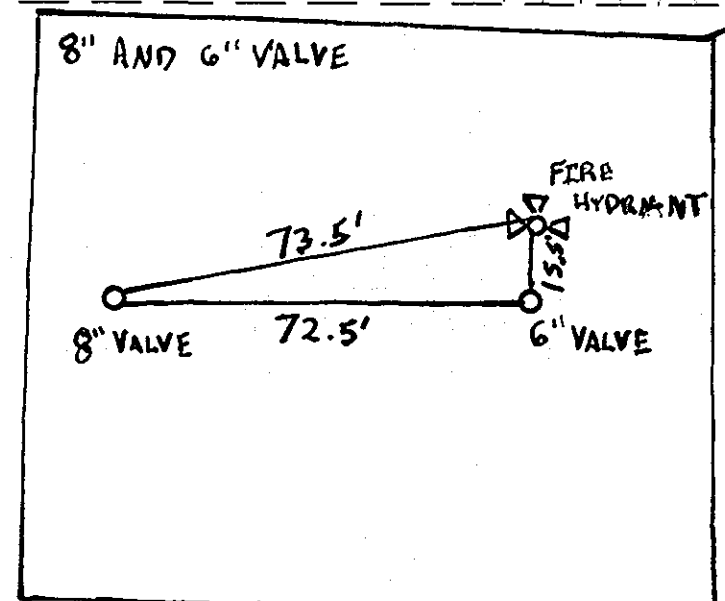
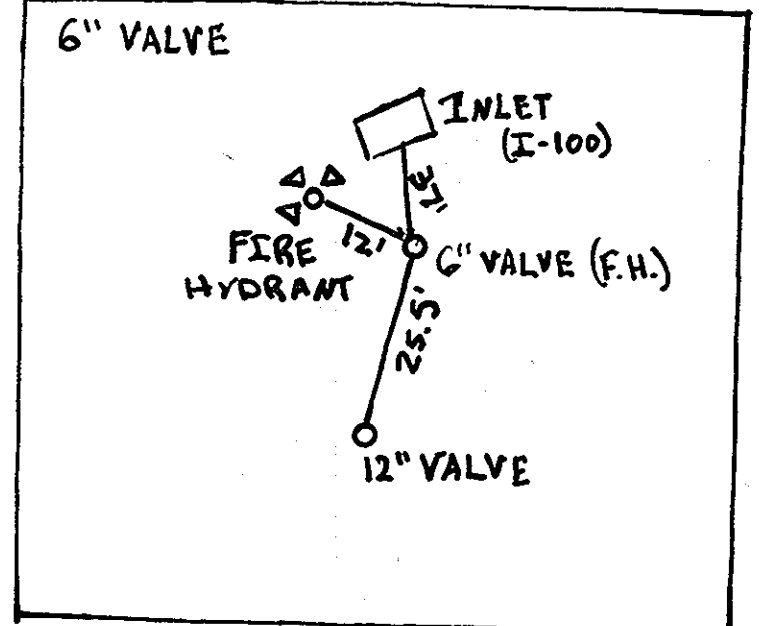
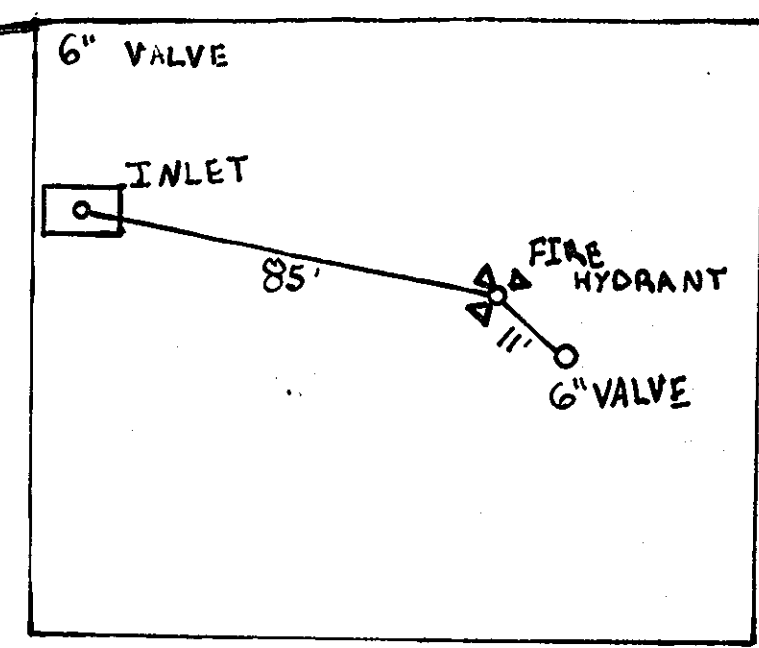
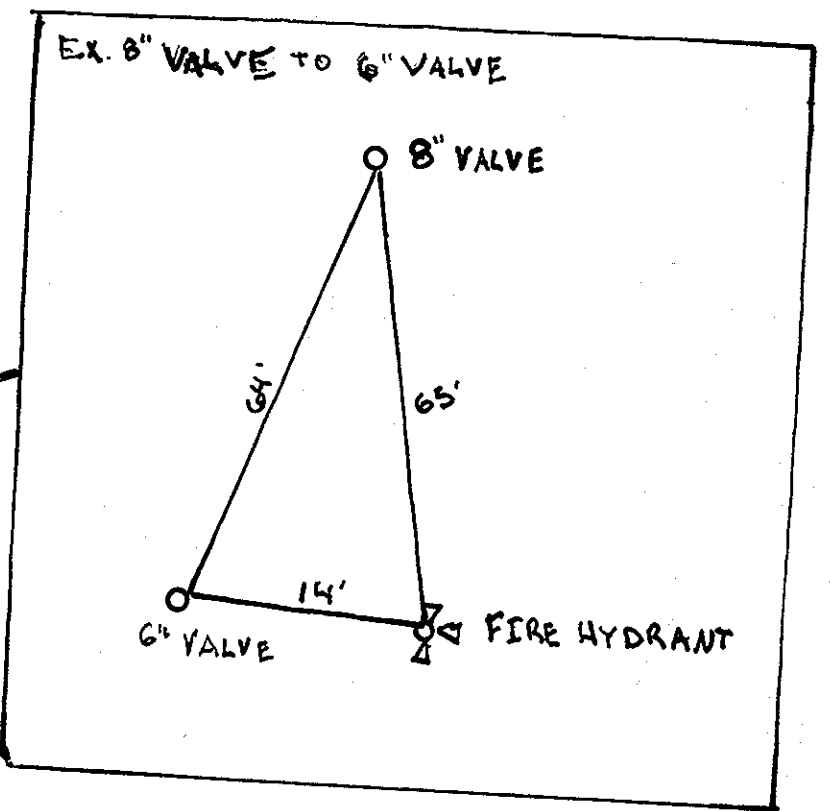
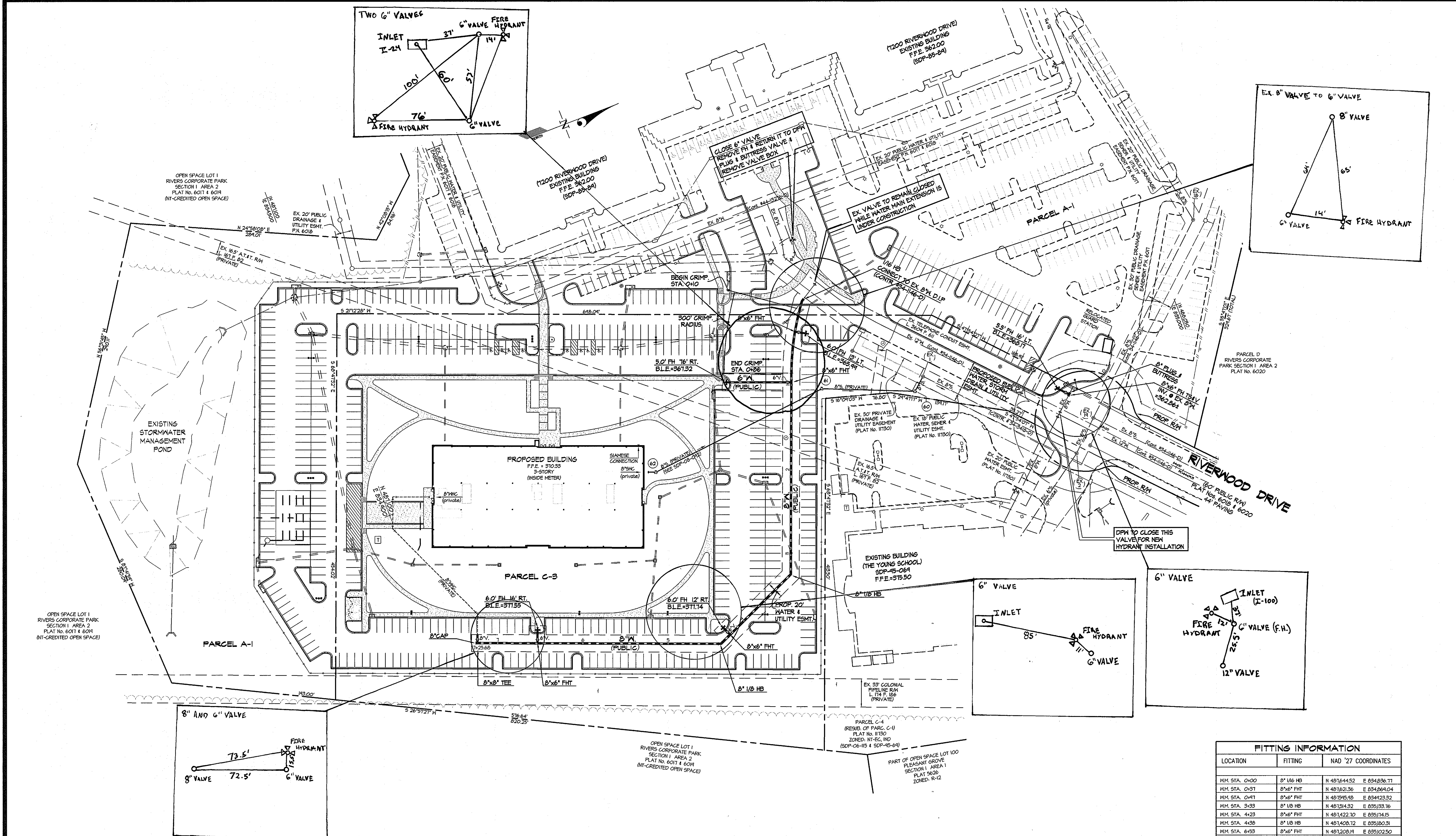
DATE: SEPT., 2008  
 G.L.W. No. 06003  
 PROFESSIONAL CERTIFICATION  
 I HEREBY CERTIFY THAT THESE PLANS WERE PREPARED OR APPROVED BY ME, AND THAT I AM A DULY LICENSED PROFESSIONAL ENGINEER UNDER THE LAWS OF THE STATE OF MARYLAND.  
 LICENSE NO. 12975  
 EXP. DATE: MAY 26, 2010  
 9-11-08



NO.	REVISION	DATE
1	AS-BUILT	11-8-11
2	REV. TO SINGLE BLDG., ADDED FH, REV. QUANTITIES	10-27-10

TITLE SHEET  
 600' SCALE MAP NO. 42 BLOCK NO. 12

RIVERS CORPORATE PARK  
 SECTION 1 AREA 2  
 PARCELS A-1 and C-3  
 HOWARD COUNTY, MARYLAND  
 ELECTION DISTRICT No. 6  
 CONTRACT No. 24-4589-D  
 SCALE AS SHOWN  
 SHEET 1 OF 3



FITTING INFORMATION		
LOCATION	FITTING	NAD '27 COORDINATES
KM STA. 0+00	8" 1/8" HB	N 48°14'44.52 E 034.836.71
KM STA. 0+37	8"x6" FHT	N 48°16'21.26 E 034.869.04
KM STA. 0+77	8"x6" FHT	N 48°15'45.48 E 034.842.32
KM STA. 3+33	8" 1/8" HB	N 48°15'14.32 E 035.133.76
KM STA. 4+23	8"x6" FHT	N 48°14'22.10 E 035.174.15
KM STA. 4+30	8" 1/8" HB	N 48°14'08.12 E 035.180.31
KM STA. 6+53	8"x6" FHT	N 48°12'08.18 E 035.102.50
KM STA. 7+24	8"x6" TEE	N 48°14'42.50 E 035.071.01

OWNER/DEVELOPER  
 COPT Riverwood, LLC  
 c/o COPT DEVELOPMENT SERVICES, LLC.  
 6711 COLUMBIA GATEWAY DRIVE, SUITE 300  
 COLUMBIA, MD 21046  
 Phone: 443-285-5649  
 Attn: SEAN MOORE

PROFESSIONAL CERTIFICATION  
 I HEREBY CERTIFY THAT THESE PLANS  
 WERE PREPARED OR APPROVED BY ME,  
 AND THAT I AM A DULY LICENSED  
 PROFESSIONAL ENGINEER UNDER THE  
 LAWS OF THE STATE OF MARYLAND,  
 LICENSE NO. 12275  
 EXP. DATE: MAY 26, 2012



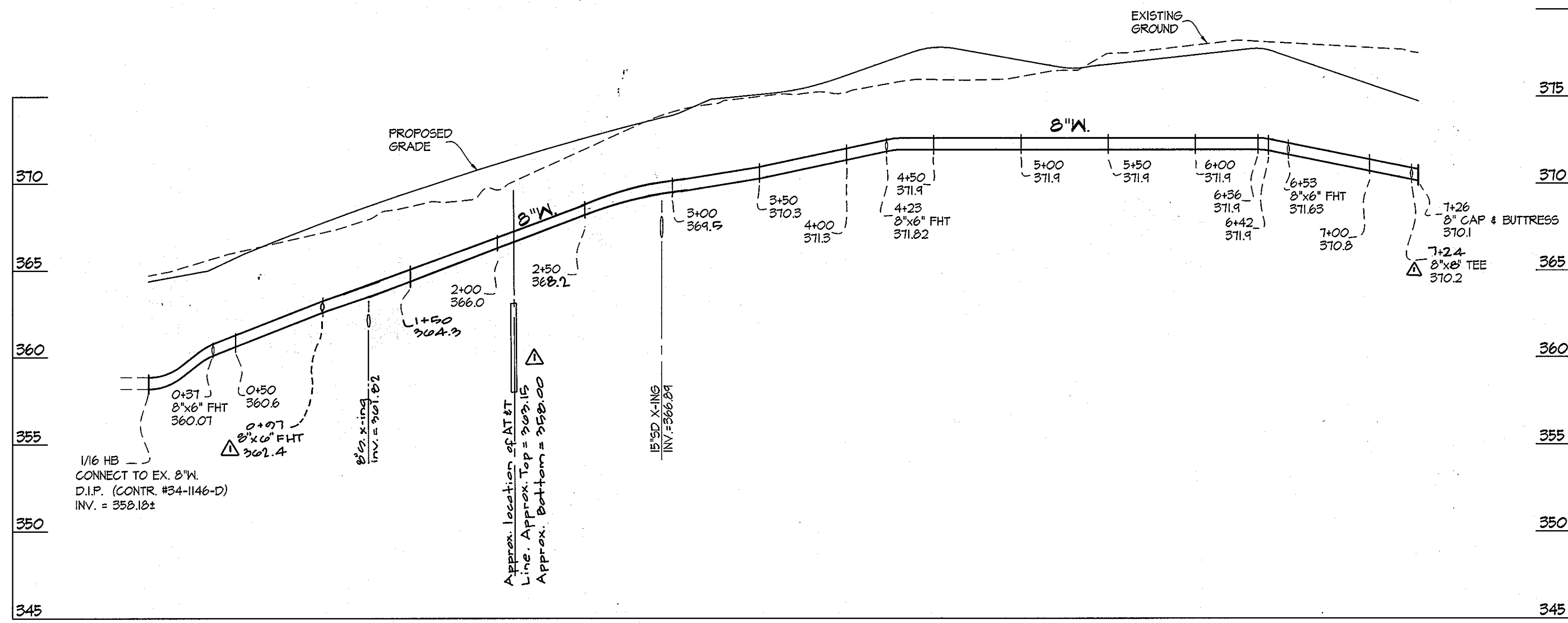
TO	BY	NO.	REVISION	DATE
MS-GAULT	klp	1	REVISE TO SINGLE BLDG. & REV. PARKING, SD & PRIVATE SEWER.	10/27/2010
			REV. W/C @ 7:24 TO 8" REMOVE W/C @ 5+33. ADD FH AT STA. 0+97	

DEPARTMENT OF PUBLIC WORKS  
 HOWARD COUNTY, MARYLAND  
 Chief, Bureau of Utilities

DEPARTMENT OF PLANNING AND ZONING  
 HOWARD COUNTY, MARYLAND  
 Chief, Development Engineering Division

GLWGUTSCHICK LITTLE & WEBER, P.A.  
 CIVIL ENGINEERS, LAND SURVEYORS, LAND PLANNERS, LANDSCAPE ARCHITECTS  
 3909 NATIONAL DRIVE - SUITE 250 - BURTONSVILLE OFFICE PARK  
 BURTONSVILLE, MARYLAND 20886  
 TEL: 301-421-4024 FAX: 301-421-4186  
 BALT: 410-880-1820 DC/VA: 301-989-2324

RIVERS CORPORATE PARK  
 SECTION 1 AREA 2  
 HOWARD COUNTY, MARYLAND  
 ELECTION DISTRICT No. 6  
 CONTRACT No. 24-4589-D



OWNER/DEVELOPER  
 COPT Riverwood, LLC  
 c/o COPT DEVELOPMENT SERVICES, LLC  
 6711 COLUMBIA GATEWAY DRIVE, SUITE 300  
 COLUMBIA, MD 21046  
 Phone: 443-285-5649  
 Attn.: SEAN MOORE

DEPARTMENT OF  
 PUBLIC WORKS  
 HOWARD COUNTY, MARYLAND  
*Stacy C. Green*  
 CHIEF, BUREAU OF UTILITIES  
 DATE 9/24/08

DEPARTMENT OF  
 PLANNING AND ZONING  
 HOWARD COUNTY, MARYLAND  
*wj/vcr*  
 CHIEF, DEVELOPMENT ENGINEERING DIVISION  
 DATE 10/1/08

**GLW GUTSCHICK LITTLE & WEBER, P.A.**  
 CIVIL ENGINEERS, LAND SURVEYORS, LAND PLANNERS, LANDSCAPE ARCHITECTS  
 3909 NATIONAL DRIVE - SUITE 250 - BURTONSVILLE OFFICE PARK  
 BURTONSVILLE, MARYLAND 20866  
 TEL: 301-421-4024 BALT. 410-880-1820 DC/VA: 301-989-2524 FAX: 301-421-4186  
 L:\CADD\DRAWINGS\06003\WS\06003-FWS.dwg DES. MBT DRN. KLP CHK. CKG

DATE SEPT., 2008  
 PROFESSIONAL CERTIFICATION  
 I HEREBY CERTIFY THAT THESE PLANS WERE PREPARED OR APPROVED BY ME, AND THAT I AM A DULY LICENSED PROFESSIONAL ENGINEER UNDER THE LAWS OF THE STATE OF MARYLAND, LICENSE NO. 12975  
 EXP. DATE: MAY 26, 2010

TOG	AS-BUILT	DATE	11-8-11
BY	KLP	REVISION	rev. WHC to 8", remove WHC @ 5+85, add FHT @ 7+10

WATER EXTENSION PROFILES  
 600' SCALE MAP NO. 42 BLOCK NO. 12

**RIVERS CORPORATE PARK**  
 SECTION 1 AREA 2  
 PARCEL A-1 and C-3  
 HOWARD COUNTY, MARYLAND  
 ELECTION DISTRICT No. 6  
 CONTRACT No. 24-4589-D

SCALE  
 1" = 50' VERT.  
 1" = 5' HORIZ.  
 SHEET  
 3 OF 3