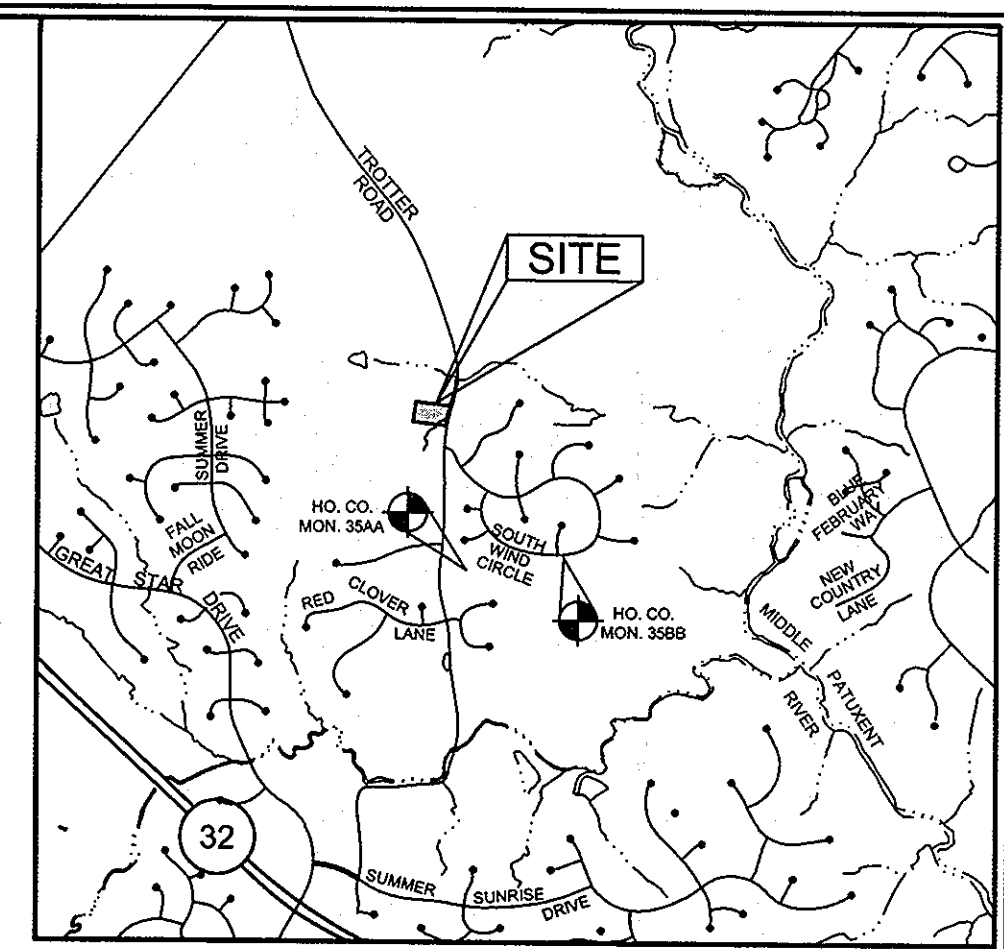
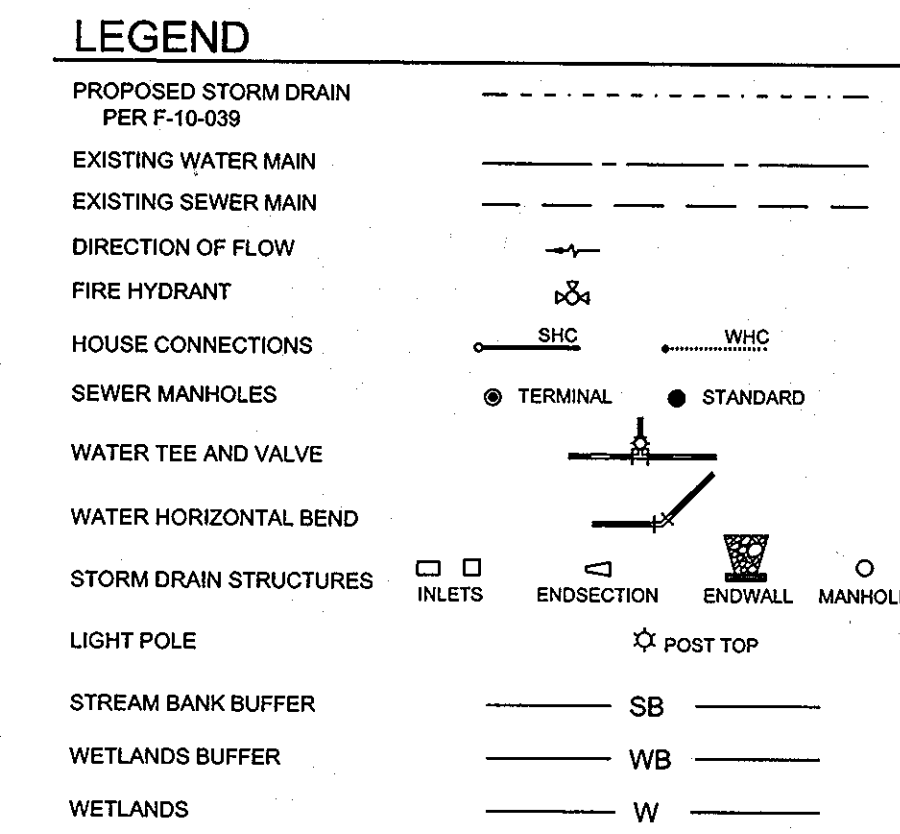


GENERAL NOTES

- I. STANDARD GENERAL NOTES**
- APPROXIMATE LOCATIONS OF EXISTING MAINS ARE SHOWN. THE CONTRACTOR SHALL TAKE ALL NECESSARY PRECAUTIONS TO PROTECT EXISTING MAINS AND SERVICES AND MAINTAIN UNINTERRUPTED SERVICE. ANY DAMAGE INCURRED SHALL BE REPAIRED IMMEDIATELY TO THE SATISFACTION OF THE ENGINEER AT THE CONTRACTOR'S EXPENSE.
 - TOPOGRAPHIC FIELD SURVEYS WERE PERFORMED FEBRUARY 2008 BY SILL, ADCOCK & ASSOCIATES, LLC.
 - THE COORDINATES ON THE DRAWINGS ARE BASED ON THE MARYLAND STATE REFERENCE SYSTEM NAD 83/11 AS PROJECTED BY HOWARD COUNTY GEODETIC CONTROL STATIONS NO.35AA AND NO. 135BB.
 - ALL VERTICAL CONTROLS ARE BASED ON NAVD 88. VERTICAL CONTROLS PROVIDED ON THE DRAWINGS ARE CONCRETE MONUMENTS.
 - ALL PIPE ELEVATIONS SHOWN ARE INVERT ELEVATIONS UNLESS OTHERWISE NOTED ON THE PLANS.
 - CLEAR ALL UTILITIES BY A MINIMUM OF 12 INCHES. CLEAR ALL POLES BY 5'-0" MINIMUM OR TUNNEL AS REQUIRED UNLESS OTHERWISE NOTED. THE OWNER HAS CONTACTED THE UTILITY COMPANIES AND HAS MADE ARRANGEMENTS FOR BRACING OF POLES AS SHOWN ON THE DRAWINGS. IN THE EVENT THE CONTRACTOR'S WORK REQUIRES THE BRACING OF ADDITIONAL POLES, ANY COST INCURRED BY THE OWNER FOR THE BRACING OF ADDITIONAL POLES OR DAMAGES SHALL BE DEDUCTED FROM MONIES OWED BY THE CONTRACTOR. THE CONTRACTOR SHALL COORDINATE WITH THE UTILITY COMPANIES TO SCHEDULE THE BRACING OF THE POLES.
 - FOR DETAILS NOT SHOWN ON THE DRAWING, AND FOR MATERIALS AND CONSTRUCTION METHODS, USE HOWARD COUNTY DESIGN MANUAL, VOLUME IV, STANDARD SPECIFICATIONS AND DETAILS FOR CONSTRUCTION (LATEST EDITION). THE CONTRACTOR SHALL HAVE A COPY OF VOLUME IV ON THE JOB.
 - WHERE TEST PITS HAVE BEEN MADE ON EXISTING UTILITIES, THEY ARE NOTED BY THE SYMBOL AT THE LOCATIONS OF THE TEST PITS. A NOTE OR NOTES CONTAINING THE RESULTS OF THE TEST PIT OR PITS IS INCLUDED ON THE DRAWINGS. EXISTING UTILITIES IN THE VICINITY OF THE PROPOSED WORK FOR WHICH TEST PITS HAVE NOT BEEN DUG SHALL BE LOCATED BY THE CONTRACTOR TWO WEEKS IN ADVANCE OF CONSTRUCTION OPERATIONS AT HIS OWN EXPENSE.
 - THE CONTRACTOR SHALL NOTIFY THE FOLLOWING UTILITY COMPANIES OR AGENCIES AT LEAST FIVE WORKING DAYS BEFORE STARTING WORK SHOWN ON PLANS:
 AT & T 1-800-252-1133
 BGE (CONSTRUCTION SERVICES) 410-950-4220
 BGE (EMERGENCY) 410-585-1400
 BUREAU OF UTILITIES 410-313-4900
 COLONIAL PIPELINE COMPANY 410-795-1390
 MISS UTILITY 1-800-257-7777
 STATE HIGHWAY ADMINISTRATION 410-531-5533
 VERIZON 1-800-743-0031/1-800-224-9210
 - TREES AND SHRUBS ARE TO BE PROTECTED FROM DAMAGE TO THE MAXIMUM EXTENT. TREES AND SHRUBS LOCATED WITHIN THE CONSTRUCTION STRIP ARE NOT TO BE REMOVED OR DAMAGED BY THE CONTRACTOR.
 - THE CONTRACTOR SHALL REMOVE TREES, STUMPS, AND ROOTS ALONG THE LINE OF EXCAVATION. PAYMENT FOR SUCH REMOVAL SHALL BE INCLUDED IN THE UNIT PRICE BID FOR CONSTRUCTION OF THE MAIN.
 - THE CONTRACTOR SHALL NOTIFY THE BUREAU OF HIGHWAYS, HOWARD COUNTY, AT (410)313-7450 AT LEAST 5 WORKING DAYS BEFORE OPEN CUTTING OR BORING/JACKING OF ANY COUNTY ROAD FOR LAYING WATER/SEWER MAINS OR HOUSE CONNECTIONS. THE APPROVAL OF THESE DRAWINGS WILL CONSTITUTE COMPLIANCE WITH DPW REQUIREMENTS PER SECTION 18.114(a) OF THE HOWARD COUNTY CODE.
 - NO WATER METERS CAN BE CONNECTED IN THE PROPOSED DEVELOPMENT UNTIL THE RESIDENCE ON PARCELS 164 OR 12 ARE CONNECTED TO PUBLIC WATER AND SEWER, AND THE WELL IS SEALED, THE SEPTIC SYSTEM PUMPED AND PROPERLY ABANDONED, AND THE DOCUMENTATION FOR EACH RECEIVED AT THE HEALTH DEPARTMENT.

- II. STANDARD WATER MAIN GENERAL NOTES**
- ALL WATER MAINS TO BE D.I.P. CLASS 54 UNLESS OTHERWISE NOTED.
 - TOPS OF ALL WATER MAINS TO HAVE A MINIMUM OF 3'-6" OF COVER UNLESS OTHERWISE NOTED.
 - VALVES ADJACENT TO TEES SHALL BE STRAPPED TO TEES.
 - ALL FITTING SHALL BE BUTTRESSED OR ANCHORED WITH CONCRETE IN ACCORDANCE WITH THE STANDARD DETAILS UNLESS OTHERWISE PROVIDED FOR ON THE DRAWINGS.
 - FIRE HYDRANTS SHALL BE SET TO THE BURY LINE ELEVATIONS SHOWN ON THE DRAWINGS. ALL FIRE HYDRANTS SHALL BE RESTRAINED AND BUTTRESSED WITH CONCRETE IN ACCORDANCE WITH THE STANDARD DETAILS. THE SOIL AROUND THE FIRE HYDRANT SHALL BE COMPACTED IN ACCORDANCE WITH SECTION 1000 AND 1005 OF THE STANDARD SPECIFICATIONS.
 - THE CONTRACTOR SHALL NOT OPERATE ANY WATER MAIN VALVES ON THE EXISTING WATER SYSTEM.
 - ALL WATER HOUSE CONNECTIONS SHALL HAVE OUTSIDE METER SETTING UNLESS OTHERWISE NOTED ON PLANS OR IN SPECIFICATIONS.
 - FIRE SPRINKLER SYSTEMS FOR ALL SINGLE FAMILY DWELLINGS SHALL HAVE A MINIMUM OF A 1-1/2" CONNECTION WITH A 1" METER.
- III. STANDARD SEWER MAIN GENERAL NOTES**
- ALL SEWER MAINS SHALL BE DIP OR P.V.C. UNLESS OTHERWISE NOTED.
 - ALL MANHOLES SHALL BE 4'-0" INSIDE DIAMETER UNLESS OTHERWISE NOTED.
 - FORCE MAINS SHALL BE D.I.P. ONLY.
 - MANHOLES SHOWN WITH 12" AND 18" WALLS ARE FOR BRICK MANHOLES ONLY.
 - MANHOLES DESIGNATED W.T. IN PLAN AND PROFILE SHALL HAVE WATERTIGHT FRAME AND COVERS, STANDARD DETAIL G5.52. WHERE WATERTIGHT FRAME AND COVER IS USED, SET TOP OF FRAME 1'-8" ABOVE FINISHED GRADE UNLESS OTHERWISE NOTED ON DRAWINGS.
 - HOUSE(S) WITH THE SYMBOL "C.N.S." INDICATES THAT CELLAR CANNOT BE SERVED.

FINAL PUBLIC WATER AND SEWER PLAN TROTTER LANDING LOTS 1-8 AND OPEN SPACE LOTS 9-10 HOWARD COUNTY, MARYLAND CONTRACT NO. 34-4575-D

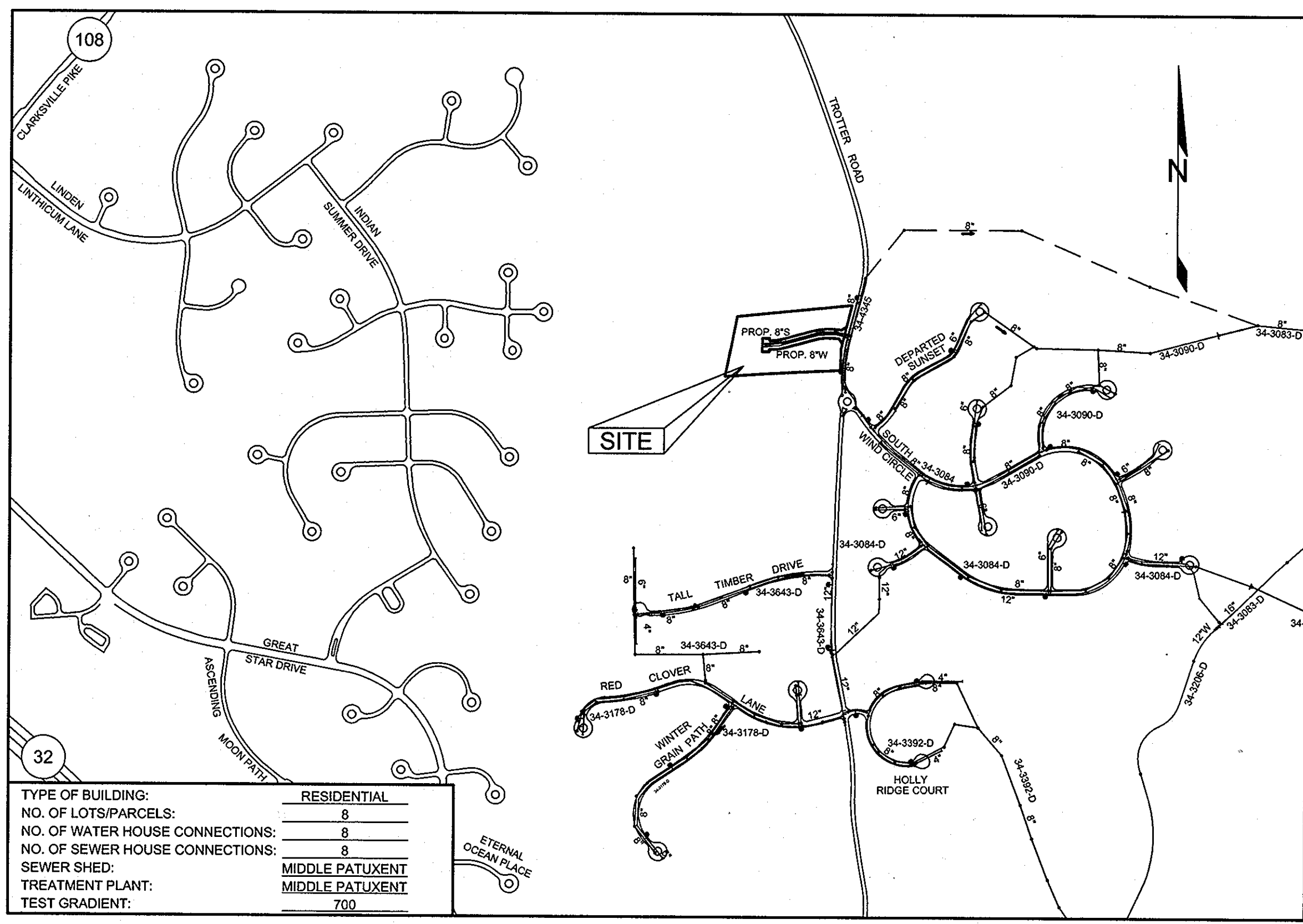


BENCHMARKS				
NUMBER	NORTHING	EASTING	ELEVATION	DESCRIPTION
35AA	560,767.7141	1,335,483.8522	430.958	CONCRETE MONUMENT ON THE EAST SIDE OF TROTTER ROAD 1.2 MILES SOUTH OF RT-108
35BB	560,790.4066	1,336,537.2658	394.323	CONCRETE MONUMENT ON THE SOUTH SIDE OF SOUTH WIND CIRCLE 100 WEST OF MISTY TOP

SHEET INDEX	
SHEET NO.	DESCRIPTION
1	COVER SHEET
2	WATER AND SEWER PLAN
3	WATER AND SEWER PROFILES

QUANTITIES						
NAME OF UTILITY CONTRACTOR: RICHARD F. KLINE						
SURVEY AND DRAFTING DIVISION AS-BUILT: 12-6-11						
ITEMS	QUANTITIES ESTIMATED	QUANTITIES	TYPE	AS-BUILT	MANUFACTURER/SUPPLIER	
8" D.I.P. (WATER)	484 LF	484	6.54 03P		AMERICAN CAST IRON PIPE	
8"x8" TS&V	1 EA	1	DIP		MUELLER	
1/32 HB	2 EA	2	DIP		TYLER UNION	
1/16 VB	4 EA	4	DIP		TYLER UNION	
FH	2 EA	2	HOCO		MUELLER	
8"x8" T	2 EA	2	DIP		TYLER UNION	
1.5" WHC	237 LF	224	COPPER		FERGUSON	
8" CAP & BUTTRESS	1 EA	1	DIP		TYLER UNION	
8" PVC (SEWER)	667 LF	177	SDR 35 PVC		NORTH AMERICAN PIPE	
SEWER MANHOLE	6 EA	6	PRE CAST CON.		ARS FREDERICK PRECAST	
4" SHC	223 LF	214	SDR 35 PVC		NORTH AMERICAN PIPE	

NOTE: NO WATER METERS CAN BE CONNECTED IN THE PROPOSED DEVELOPMENT UNTIL THE HEALTH DEPARTMENT RECEIVES DOCUMENTATION THAT THE EXISTING WELLS ARE SEALED AND THE EXISTING SEPTIC SYSTEMS PUMPED AND PROPERLY ABANDONED AT RESIDENCE LOCATIONS CURRENTLY (JANUARY 2010) OCCUPYING PARCEL 12 - LOT 9 (5858 TROTTER ROAD) AND PARCEL 164 - LOT 10 (5848 TROTTER ROAD) RESPECTIVELY.



TYPE OF BUILDING:	RESIDENTIAL
NO. OF LOTS/PARCELS:	8
NO. OF WATER HOUSE CONNECTIONS:	8
NO. OF SEWER HOUSE CONNECTIONS:	8
SEWER SHED:	MIDDLE PATUXENT
TREATMENT PLANT:	MIDDLE PATUXENT
TEST GRADIENT:	700

SEDIMENT CONTROL MEASURES WILL BE IMPLEMENTED IN ACCORDANCE WITH SECTION 219 OF THE STANDARD SPECIFICATIONS AND WITH ROAD CONSTRUCTION PLANS F-10-039

THIS DEVELOPMENT IS APPROVED FOR SOIL EROSION AND SEDIMENT CONTROL BY THE HOWARD SOIL CONSERVATION DISTRICT.

 SOIL CONSERVATION DISTRICT DATE: 6/17/10

DEPARTMENT OF PUBLIC WORKS
 HOWARD COUNTY, MARYLAND

 CHIEF, BUREAU OF UTILITIES DATE: 5/24/10

DEPARTMENT OF PLANNING AND ZONING
 HOWARD COUNTY, MARYLAND

 CHIEF, DEVELOPMENT ENGINEERING DIVISION DATE: 6/1/10

PROFESSIONAL CERTIFICATION: I HEREBY CERTIFY THAT THESE DOCUMENTS WERE PREPARED OR APPROVED BY ME, AND THAT I AM A DULY LICENSED PROFESSIONAL ENGINEER UNDER THE LAWS OF THE STATE OF MARYLAND, LICENSE NO. 32026, EXPIRATION DATE: JUNE 20, 2011

Sill · Adcock & Associates · LLC
 Engineers · Surveyors · Planners
 3300 North Ridge Road, Suite 160
 Ellicott City, Maryland 21043
 Phone: 443.325.7682 Fax: 443.325.7685
 Email: info@saaland.com

DESIGNED BY: SJT
 DRAWN BY: SJT
 CHECKED BY: PS
 DATE: MAY 5, 2010

NO.	DESCRIPTION	DATE
1	A6 BUILD	12-16-11

COVER SHEET

600' SCALE MAP NO. 35 BLOCK NO. 2

TROTTER LANDING
 LOTS 1 THRU 8 AND OPEN SPACE LOTS 9 AND 10

TAX MAP 35 GRID 2 PARCELS 164 AND 12
 5TH ELECTION DISTRICT HOWARD COUNTY, MARYLAND

CONTRACT NO. 34-4575-D

SCALE:
 AS SHOWN

SHEET NO.
1 OF 3

SEWER HOUSE CONNECTION SCHEDULE			
LOT NO.	INVERT @ MAIN	INVERT @ RW	MIN. CELLAR ELEV.
1	380.19	380.54	385.04
2 (1,4)	391.33	391.73	396.11
3 (1,4)	401.92	402.26	407.55
4 (1,4)	410.42	411.90	415.08
5 (2,4)	410.42	411.08	416.29
6 (3,4)	410.22	411.49	415.88
7	402.46	403.13	407.65
8	392.80	393.40	397.62

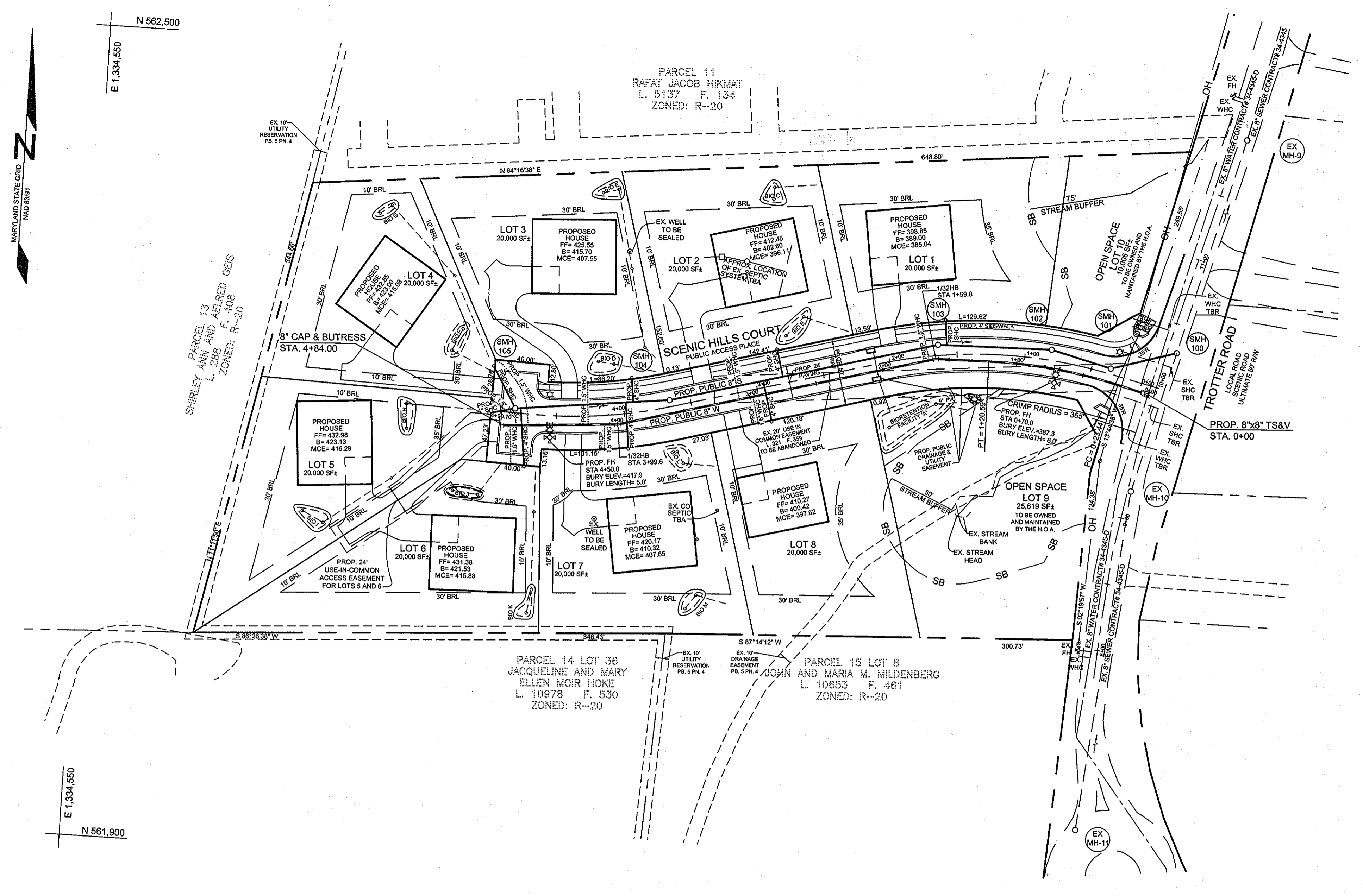
- NOTES:
- 1) SEWER HOUSE CONNECTION AT 5.0%
 - 2) SEWER HOUSE CONNECTION AT 4.0%
 - 3) SEWER HOUSE CONNECTION AT 3.0%
 - 4) MINIMUM CELLAR ELEVATION BASED ON 2% SLOPE FROM SEWER MAIN TO REAR OF PROPOSED STRUCTURE.

WATER MAIN TABULATION CHART	
APPURTENANCE	ROAD STATION & OFFSET OR NORTHING & EASTING
8"x8" TS&V	STA 0+04.34, O/S 6.67' LT.
1/16" VB	STA 0+16.35, O/S 6.39' LT.
1/16" VB	STA 0+23.85, O/S 6.22' LT.
1/16" VB	STA 0+30.30, O/S 6.03' LT.
1/16" VB	STA 0+37.80, O/S 6.02' LT.
1/32" HB	STA 1+66.01, O/S 6.67' LT.
6"x6" FHT	STA 2+28.64, O/S 5.00' LT.
6" VALVE	STA 2+28.64, O/S 7.00' LT.
FIRE HYDRANT	STA 2+28.64, O/S 16.10' LT.
1/32" HB	STA 4+05.39, O/S 7.38' LT.
8" CAP & BUTTRESS	STA 4+88.39, O/S 10.02' LT.

MANHOLE LOCATION CHART	
NO.	ROAD STATION & OFFSET OR NORTHING & EASTING
SMH 100	N 562,295.28 E 1,335,347.22
SMH 101	STA 0+36.19, O/S 4.00' RT
SMH 102	STA 0+81.06, O/S 8.00' RT
SMH 103	STA 1+88.45, O/S 8.00' RT
SMH 104	STA 3+85.02, O/S 5.00' RT
SMH 105	STA 4+80.96, O/S 3.30' RT

WATER HOUSE CONNECTION AS-BUILT LOCATION TABLE			
LOT NUMBER	ADDRESS	LOCATION DIMENSION 1	LOCATION DIMENSION 2
LOT 1		8" MAIN TO WHC = 26'	SMH-103 TO WHC = 20'
LOT 2		8" MAIN TO WHC = 29'	SMH-104 TO WHC = 54'
LOT 3		8" MAIN TO WHC = 31'	SMH-105 TO WHC = 57'
LOT 4		8" MAIN TO WHC = 54'	SMH-105 TO WHC = 37'
LOT 5		8" MAIN TO WHC = 25'	SMH-105 TO WHC = 18'
LOT 6		8" MAIN TO WHC = 21'	SMH-105 TO WHC = 40'
LOT 7		8" MAIN TO WHC = 17'	FHT TO WHC = 42'
LOT 8		8" MAIN TO WHC = 20'	SMH-104 TO WHC = 67'

SEWER HOUSE CONNECTION AS-BUILT LOCATION TABLE			
LOT NUMBER	ADDRESS	LOCATION DIMENSION 1	LOCATION DIMENSION 2
LOT 1		8" MAIN TO SHC = 18'	SMH-103 TO SHC = 19'
LOT 2		8" MAIN TO SHC = 20'	SMH-104 TO SHC = 87'
LOT 3		8" MAIN TO SHC = 18'	FHT TO SHC = 75'
LOT 4		SMH-105 TO SHC = 33'	FHT TO SHC = 67'
LOT 5		SMH-105 TO SHC = 18'	FHT TO SHC = 49'
LOT 6		8" MAIN TO SHC = 43'	FHT TO SHC = 30'
LOT 7		8" MAIN TO SHC = 34'	FHT TO SHC = 60'
LOT 8		8" MAIN TO SHC = 30'	SMH-104 TO SHC = 71'



PLAN VIEW
SCALE: 1"=50'

OWNER
JANE J. ATHEY
5848 TROTTER ROAD
CLARKSVILLE, MD 21029

OWNER
HOWARD W. AND
BARBARA W. JANOSKE
5858 TROTTER ROAD
CLARKSVILLE, MD 21029

DEVELOPER
WILLIAMSBURG GROUP, LLC
C/O ROBERT CORBETT
5485 HARPER'S FARM ROAD,
SUITE 200
COLUMBIA, MD 21044
410.997.8800

DEPARTMENT OF PUBLIC WORKS
HOWARD COUNTY, MARYLAND

Shirley C. Green
CHIEF, BUREAU OF UTILITIES
DATE: 5/24/10

DEPARTMENT OF PLANNING AND ZONING
HOWARD COUNTY, MARYLAND

William J. Adams
CHIEF, DEVELOPMENT ENGINEERING DIVISION
DATE: 6/11/10

PROFESSIONAL CERTIFICATION: I HEREBY CERTIFY THAT THESE DOCUMENTS WERE PREPARED OR APPROVED BY ME, AND THAT I AM A DULY LICENSED PROFESSIONAL ENGINEER UNDER THE LAWS OF THE STATE OF MARYLAND, LICENSE NO. 33025, EXPIRATION DATE: JUNE 20, 2011

Sill · Adcock & Associates · LLC
Engineers · Surveyors · Planners
3300 North Ridge Road, Suite 160
Ellicott City, Maryland 21043
Phone: 443.325.7682 Fax: 443.325.7685
Email: info@saalund.com

DESIGNED BY: SJT
DRAWN BY: SJT
CHECKED BY: PS
DATE: MAY 5, 2010

NO.	REVISIONS	DATE
1	AS QUOTED	12-15-11

WATER AND SEWER PLAN

600' SCALE MAP NO. 35 BLOCK NO. 2

TROTTER LANDING
LOTS 1 THRU 8 AND OPEN SPACE LOTS 9 AND 10

TAX MAP 35 GRID 2
5TH ELECTION DISTRICT

PARCELS 164 AND 12
HOWARD COUNTY, MARYLAND

CONTRACT NO. 34-4575-D

SCALE:
AS
SHOWN

SHEET NO.
2 OF 3

