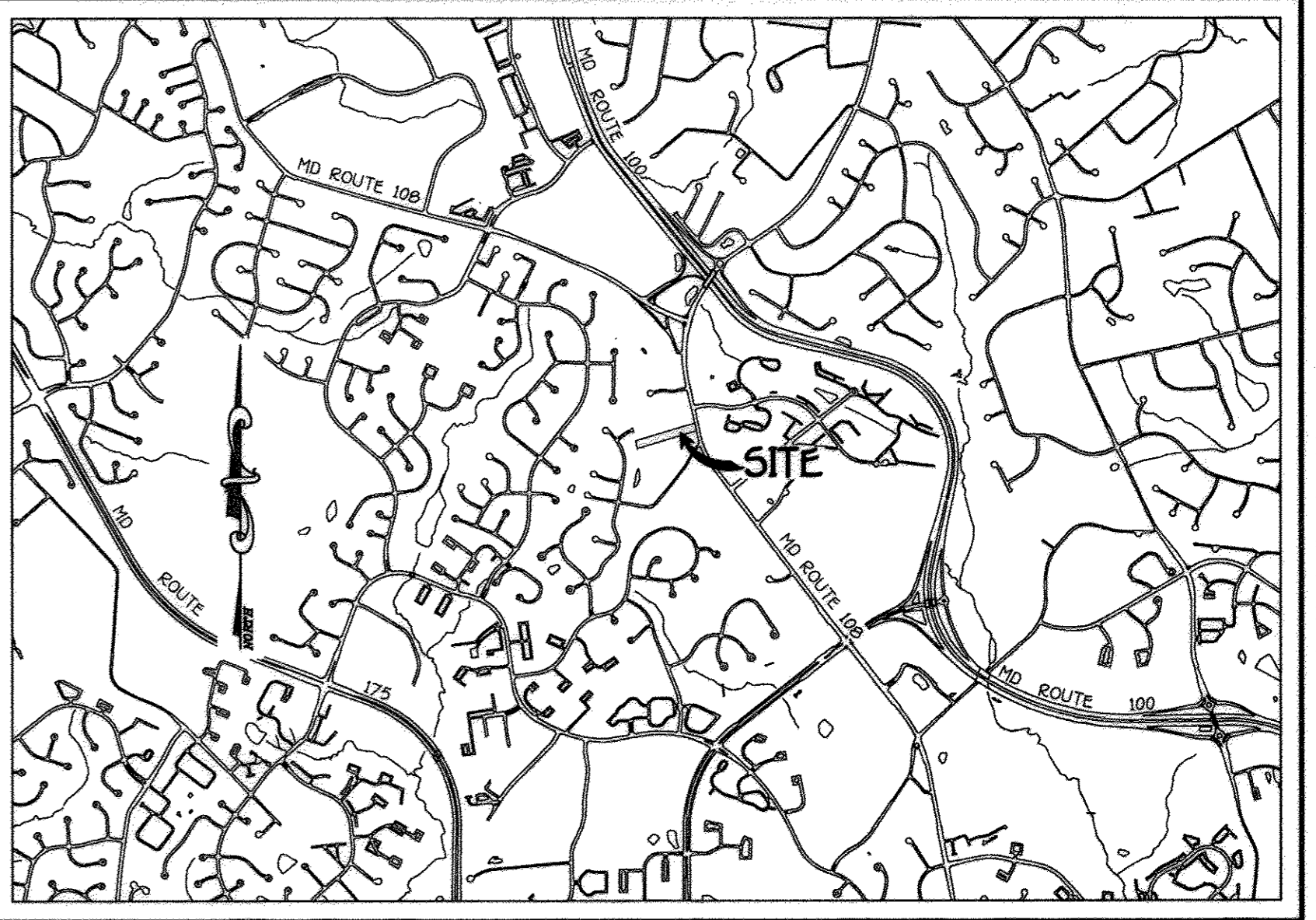
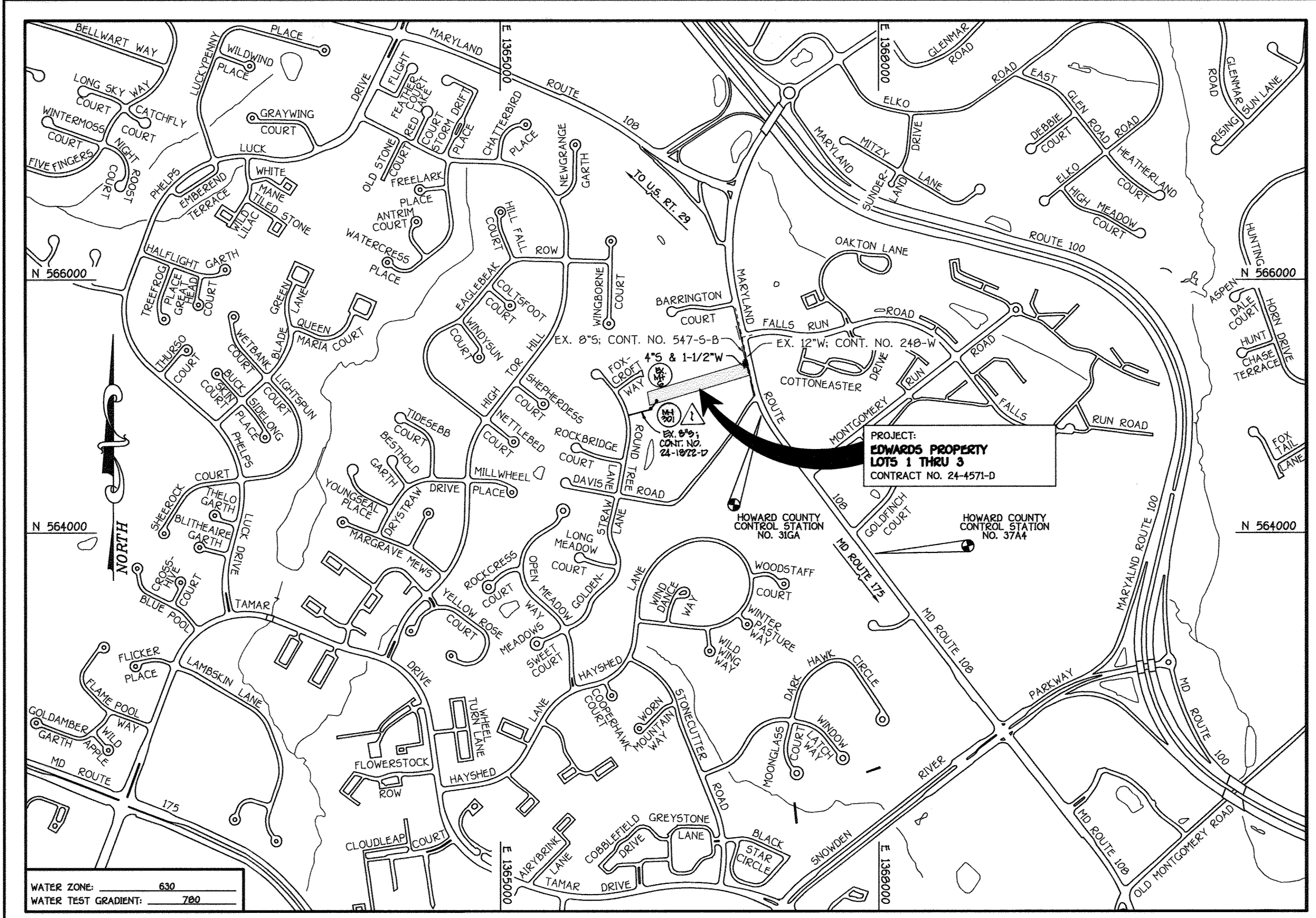


QUANTITIES				
ITEM	ESTIMATED	QUANTITIES	AS-BUILT	SUPPLIER
4" SEWER	20 LF.	15	SDR-35	WAT.A.MERISIAN
SEWER CLEAN-OUTS	2 EACH			HOWARD CONSULTANTS
1-1/2" W/C	70 LF.	76	COPPER	MUELLER
OUTSIDE METER SETTING	2 EACH	2		McDONALD
8" SEWER	84 LF.	87	SDR-35	WAT.A.MERISIAN
MANHOLE	1 BAG	1		ATLANTIC CONCRETE

NAME OF UTILITY CONTRACTOR: BARON MEISTER - BELL
SURVEY & DRAFTING DIVISION AS-BUILT DATE:



LOCATION MAP
SCALE: 1" = 2000'

GENERAL NOTES

- PART I
- APPROXIMATE LOCATIONS OF EXISTING MAINS ARE SHOWN. THE CONTRACTOR SHALL TAKE ALL NECESSARY PRECAUTIONS TO PROTECT EXISTING MAINS AND SERVICES AND MAINTAIN UNINTERRUPTED SERVICE. ANY DAMAGE INCURRED SHALL BE REPAIRED IMMEDIATELY TO THE SATISFACTION OF THE ENGINEER AT THE CONTRACTOR'S EXPENSE.
 - TOPOGRAPHIC FIELD SURVEYS WERE PERFORMED ON OR ABOUT OCTOBER, 2006 BY FISHER, COLLINS & CARTER, INC.
 - HORIZONTAL AND VERTICAL CONTROLS:
THE COORDINATES SHOWN ON THE DRAWINGS ARE BASED ON MARYLAND STATE REFERENCE SYSTEM NAD '83/91' AS PROJECTED BY HOWARD COUNTY GEODETIC CONTROL STATIONS NO. 31GA & NO. 37AA. SEE THIS SHEET FOR BENCHMARK INFORMATION. ALL VERTICAL CONTROLS ARE BASED ON NAVD '83. VERTICAL CONTROLS ARE BASED ON TRAVERSE POINT NO. 7005; A REBAR & CAP SET ALONG MARYLAND ROUTE 100; ELEV. 514.86
 - ALL PIPE ELEVATIONS SHOWN ARE INVERT ELEVATIONS UNLESS OTHERWISE NOTED ON THE PLANS.
 - CLEAR ALL UTILITIES BY A MINIMUM OF 12 INCHES. CLEAR ALL POLES BY 3'-0" MINIMUM OR TUNNEL AS REQUIRED UNLESS OTHERWISE NOTED. THE OWNER HAS CONTACTED THE UTILITY COMPANIES AND HAS MADE ARRANGEMENTS FOR BRACING OF POLES AS SHOWN ON THE DRAWINGS. IN THE EVENT THE CONTRACTOR'S WORK REQUIRES BRACING OF ADDITIONAL POLES, ANY COST INCURRED BY THE OWNER FOR THE BRACING OF THE ADDITIONAL POLES OR DAMAGES SHALL BE DEDUCTED FROM MONIES OWED THE CONTRACTOR. THE CONTRACTOR SHALL COORDINATE WITH THE UTILITY COMPANIES TO SCHEDULE THE BRACING OF THE POLES.
 - FOR DETAILS NOT SHOWN ON THE DRAWINGS, AND FOR MATERIALS AND CONSTRUCTION METHODS, USE HOWARD COUNTY DESIGN MANUAL VOLUME IV, STANDARD SPECIFICATIONS AND DETAILS FOR CONSTRUCTION (LATEST EDITION). THE CONTRACTOR SHALL HAVE A COPY OF VOLUME IV ON THE JOB SITE.
 - WHERE TEST PITS HAVE BEEN MADE ON EXISTING UTILITIES, THEY ARE NOTED BY THE SYMBOL AT THE LOCATIONS OF THE TEST PITS. A NOTE OR NOTES CONTAINING THE RESULTS OF THE TEST PIT OR PITS IS INCLUDED ON THE DRAWINGS. EXISTING UTILITIES IN THE VICINITY OF THE PROPOSED WORK FOR WHICH TEST PITS HAVE NOT BEEN DUG SHALL BE LOCATED BY THE CONTRACTOR TWO WEEKS IN ADVANCE OF CONSTRUCTION OPERATIONS AT HIS OWN EXPENSE.
 - THE CONTRACTOR SHALL NOTIFY THE FOLLOWING UTILITY COMPANIES OR AGENCIES AT LEAST FIVE WORKING DAYS BEFORE STARTING WORK SHOWN ON THESE PLANS:
 AT&T 1-800-252-1133
 BGE (CONSTRUCTION SERVICES) 410-850-4620
 BGE (EMERGENCY) 410-685-1400
 BUREAU OF UTILITIES 410-313-4900
 COLONY PIPELINE CO. 410-799-1990
 MISS UTILITY 1-800-257-7777
 STATE HIGHWAY ADMINISTRATION 410-531-5533
 VERIZON 1-800-743-0033/410-224-9210
 - TREES AND SHRUBS ARE TO BE PROTECTED FROM DAMAGE TO THE MAXIMUM EXTENT. TREES AND SHRUBS LOCATED WITHIN THE CONSTRUCTION STRIP ARE NOT TO BE REMOVED OR DAMAGED BY THE CONTRACTOR.
 - CONTRACTOR SHALL REMOVE TREES, STUMPS AND ROOTS ALONG THE LINE OF EXCAVATION. PAYMENT FOR SUCH REMOVAL SHALL BE INCLUDED IN THE UNIT PRICE BID FOR THE CONSTRUCTION OF THE MAIN.
 - THE CONTRACTOR SHALL NOTIFY THE BUREAU OF HIGHWAYS, HOWARD COUNTY, AT (410)-313-7450 AT LEAST FIVE WORKING DAYS BEFORE OPEN CUTTING OR BORING/JACKING OF ANY COUNTY ROAD FOR LAYING WATER/SEWER MAINS OR HOUSE CONNECTIONS. THE APPROVAL OF THESE DRAWINGS WILL CONSTITUTE COMPLIANCE WITH DPW REQUIREMENTS PER SECTION 18.114(d) OF THE HOWARD COUNTY CODE.

- PART II: WATER
- ALL WATER MAINS SHALL BE D.I.P. CLASS 54 UNLESS OTHERWISE NOTED.
 - TOPS OF ALL WATER MAINS SHALL HAVE A MINIMUM OF 3'-6" OF COVER UNLESS OTHERWISE NOTED.
 - VALVES ADJACENT TO TEES SHALL BE STRAPPED TO TEES.
 - ALL FITTINGS SHALL BE BUTTRESSED OR ANCHORED WITH CONCRETE IN ACCORDANCE WITH STANDARD DETAILS UNLESS OTHERWISE PROVIDED FOR ON THE DRAWINGS.
 - FIRE HYDRANTS SHALL BE SET TO THE BURY LINE ELEVATIONS SHOWN ON THE DRAWINGS. ALL FIRE HYDRANTS SHALL BE INSTALLED IN ACCORDANCE WITH STANDARD DETAILS. THE SOIL AROUND THE FIRE HYDRANT SHALL BE COMPACTED IN ACCORDANCE WITH SECTION 1000 AND SECTION 1005 OF THE STANDARD SPECIFICATIONS.
 - THE CONTRACTOR SHALL NOT OPERATE ANY WATER MAIN VALVES ON THE EXISTING WATER SYSTEM.
 - ALL WATER HOUSE CONNECTIONS SHALL BE FOR INSIDE METER SETTING UNLESS OTHERWISE NOTED ON THE PLANS OR IN THE SPECIFICATIONS.
- PART III: SEWER
- ALL SEWER MAINS SHALL BE D.I.P. OR P.V.C. UNLESS OTHERWISE NOTED.
 - ALL MANHOLES SHALL BE 4'-0" INSIDE DIAMETER UNLESS OTHERWISE NOTED.
 - FORCE MAINS SHALL BE D.I.P. ONLY.
 - MANHOLES SHOWN WITH 12" AND 16" WALLS ARE FOR BRICK MANHOLES ONLY.
 - MANHOLES DESIGNATED W.T. IN PLAN AND PROFILE SHALL HAVE WATER-TIGHT FRAME AND COVER, STANDARD DETAIL G5-52. WHERE WATER-TIGHT MANHOLE FRAMES AND COVERS ARE USED, SET TOP OF FRAME 1'-6" ABOVE FINISHED GRADE UNLESS OTHERWISE NOTED ON THE DRAWINGS.
 - HOUSE(S) WITH THE SYMBOL "C.N.S." INDICATES THAT THE CELLAR CANNOT BE SERVED.

BENCHMARK INFORMATION

B.M.#1 - HOWARD COUNTY CONTROL STATION #31GA (NAD '83)
 (LOCATED ALONG THE WEST SIDE OF MARYLAND ROUTE 100, APPROX. 46.5' SOUTH OF CAP POLE #45)
 N 584.925.7547
 E 1367.067.6509
 ELEVATION = 515.730

B.M.#2 - HOWARD COUNTY CONTROL STATION #37AA (NAD '83)
 (LOCATED ALONG THE NORTH SIDE OF MARYLAND ROUTE 100, APPROX. 200' SOUTH EAST OF GOLDFINCH COURT)
 N 563.935.9101
 E 1367.571.6471
 ELEVATION = 437.298

TYPE OF BUILDING: RESIDENTIAL SINGLE FAMILY DETACHED
 NUMBER OF LOTS: 3 (3 BUILDABLE)
 NO. OF WATER HOUSE CONNECTIONS: 2
 NO. OF SEWER HOUSE CONNECTIONS: 2
 DRAINAGE AREA: LITTLE PATUXENT
 TREATMENT PLANT: LITTLE PATUXENT WATER RECLAMATION PLANT, SAVAGE MD

VICINITY MAP
SCALE: 1" = 600'

PLAN REFERENCE NUMBERS:
F-08-091 (RECORD PLAT)

DEVELOPER'S CERTIFICATION
 I/WE HEREBY CERTIFY THAT ALL DEVELOPMENT AND CONSTRUCTION WILL BE DONE ACCORDING TO THIS PLAN OF DEVELOPMENT AND PLAN FOR EROSION AND SEDIMENT CONTROL AND THAT ALL RESPONSIBLE PERSONNEL INVOLVED IN THE CONSTRUCTION PROJECT WILL HAVE A CERTIFICATE OF ATTENDANCE AT THE DEPARTMENT OF THE ENVIRONMENT APPROVED TRAINING PROGRAM FOR THE CONTROL OF SEDIMENT AND EROSION BEFORE BEGINNING THE PROJECT. I ALSO AUTHORIZE PERIODIC ON-SITE INSPECTION BY THE HOWARD SOIL CONSERVATION DISTRICT OR THEIR AUTHORIZED AGENTS, AS ARE DEEMED NECESSARY.

Paul W. Kaidel, FOR:
 Mr. Benjamin Edwards 05-07-08
 SIGNATURE OF DEVELOPER DATE

ENGINEER'S CERTIFICATION
 I HEREBY CERTIFY THAT THIS PLAN FOR EROSION AND SEDIMENT CONTROL REPRESENTS A PRACTICAL AND WORKABLE PLAN BASED ON MY PERSONAL KNOWLEDGE OF THE SITE CONDITIONS AND THAT IT WAS PREPARED IN ACCORDANCE WITH THE REQUIREMENTS OF THE HOWARD SOIL CONSERVATION DISTRICT.

Paul W. Kaidel 05/07/08
 SIGNATURE OF ENGINEER DATE

THIS DEVELOPMENT IS APPROVED FOR EROSION AND SEDIMENT CONTROL BY HOWARD SOIL CONSERVATION DISTRICT.
 APPROVED: John K. Klutznick 5/22/08
 HOWARD SOIL CONSERVATION DISTRICT DATE

SEDIMENT CONTROL MEASURES FOR THIS CONTRACT WILL BE IMPLEMENTED IN ACCORDANCE WITH SECTION 219 OF THE HOWARD COUNTY DESIGN MANUAL & STANDARDS AND SPECIFICATIONS FOR SOIL EROSION AND SEDIMENT CONTROL IN DEVELOPING AREAS AND AS SHOWN ON THESE PLANS.
 Paul W. Kaidel, FOR:
 Mr. Benjamin Edwards 05-07-08
 SIGNATURE OF DEVELOPER DATE

CONTRACT NO. 24-4571-D
EDWARDS PROPERTY
 LOTS 1 THRU 3
 WATER AND SEWER MAIN EXTENSIONS
 HOWARD COUNTY, MARYLAND

DEPARTMENT OF PUBLIC WORKS
 HOWARD COUNTY, MARYLAND
 Chief, Bureau of Utilities 5/17/08 DATE

DEPARTMENT OF PLANNING AND ZONING
 HOWARD COUNTY, MARYLAND
 Chief, Development Engineering Division 5/22/08 DATE

FISHER, COLLINS & CARTER, INC.
 CIVIL ENGINEERING CONSULTANTS & LAND SURVEYORS
 CENTRONAL SQUARE OFFICE PARK - 10273 BALTIMORE NATIONAL FLYE
 ELICOTT CITY, MARYLAND 21042
 (410) 461-2895



DESIGNED BY:	B.C.R.		
DRAWN BY:	B.C.R.		
CHECKED BY:	P.W.K.	2/11/13	
DATE:	MAY, 2008	4/22/09	
BY NO.		4/22/09	
REVISION			

WATER AND SEWER MAINS TITLE SHEET

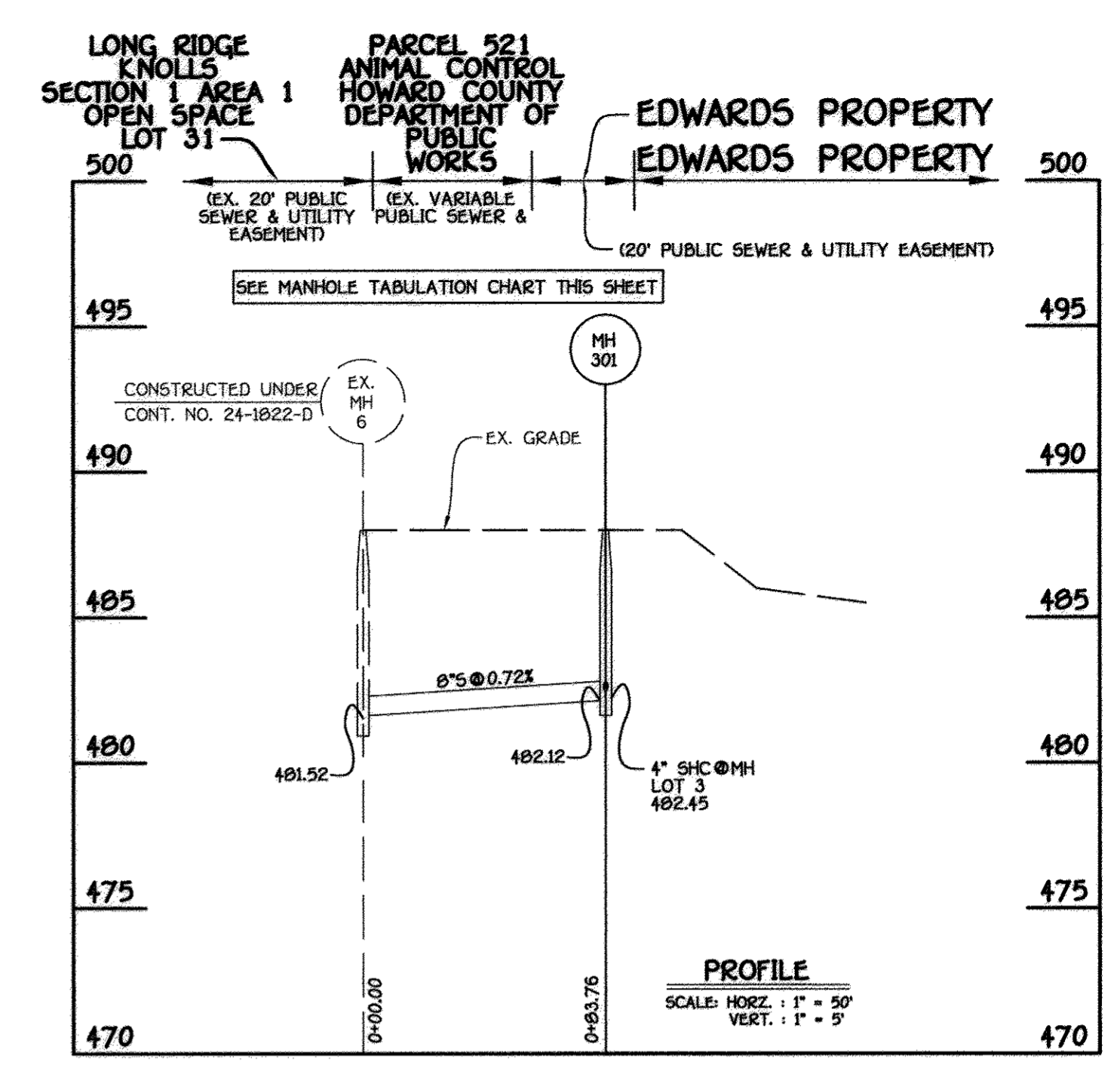
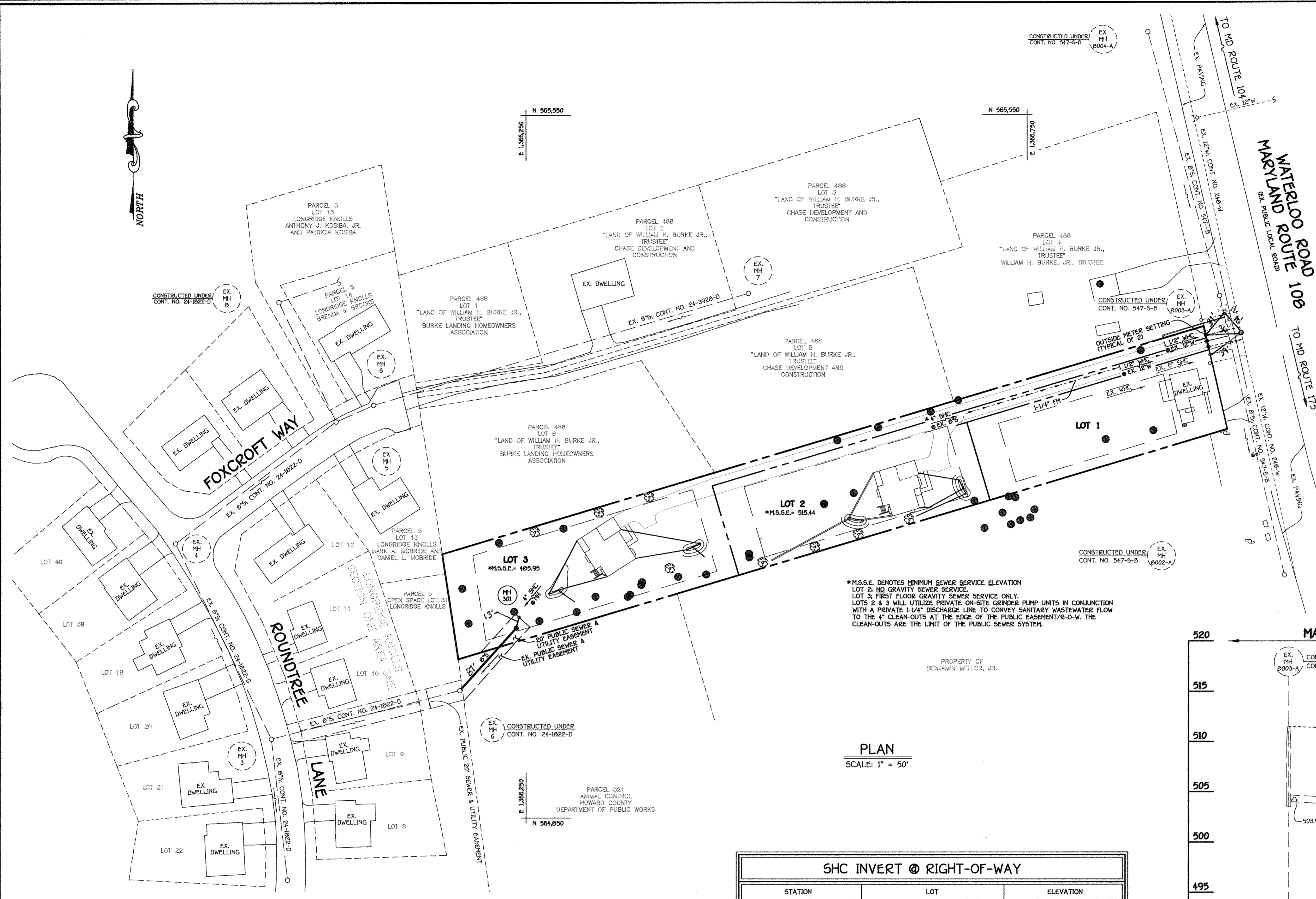
600' SCALE MAP NO. 31 BLOCK NO. 18
 F.C.C. WORK ORDER NO. 30905
 FILE NAME: WATER AND SEWER MAIN EXTENSION TITLE SHEET

DEVELOPER
 MR. BENJAMIN EDWARDS
 5544 WATERLOO ROAD
 COLUMBIA, MD 21045
 PHONE: 410-465-5231

CONTRACT NO. 24-4571-D
EDWARDS PROPERTY
 LOTS 1 THRU 3
 WATER AND SEWER MAIN EXTENSIONS
 HOWARD COUNTY, MARYLAND

EDWARDS PROPERTY
 LOTS 1 THRU 3
 CONTRACT NO. 24-4571-D
 SIXTH ELECTION DISTRICT
 HOWARD COUNTY, MARYLAND

SCALE AS SHOWN
 SHEET 1 of 2



8" SEWER MAIN: LOTS 3

MANHOLE TABULATION CHART			
NO.	NORTHING	EASTING	RIM ELEVATION
301	566381.95	1366239.95	488.00

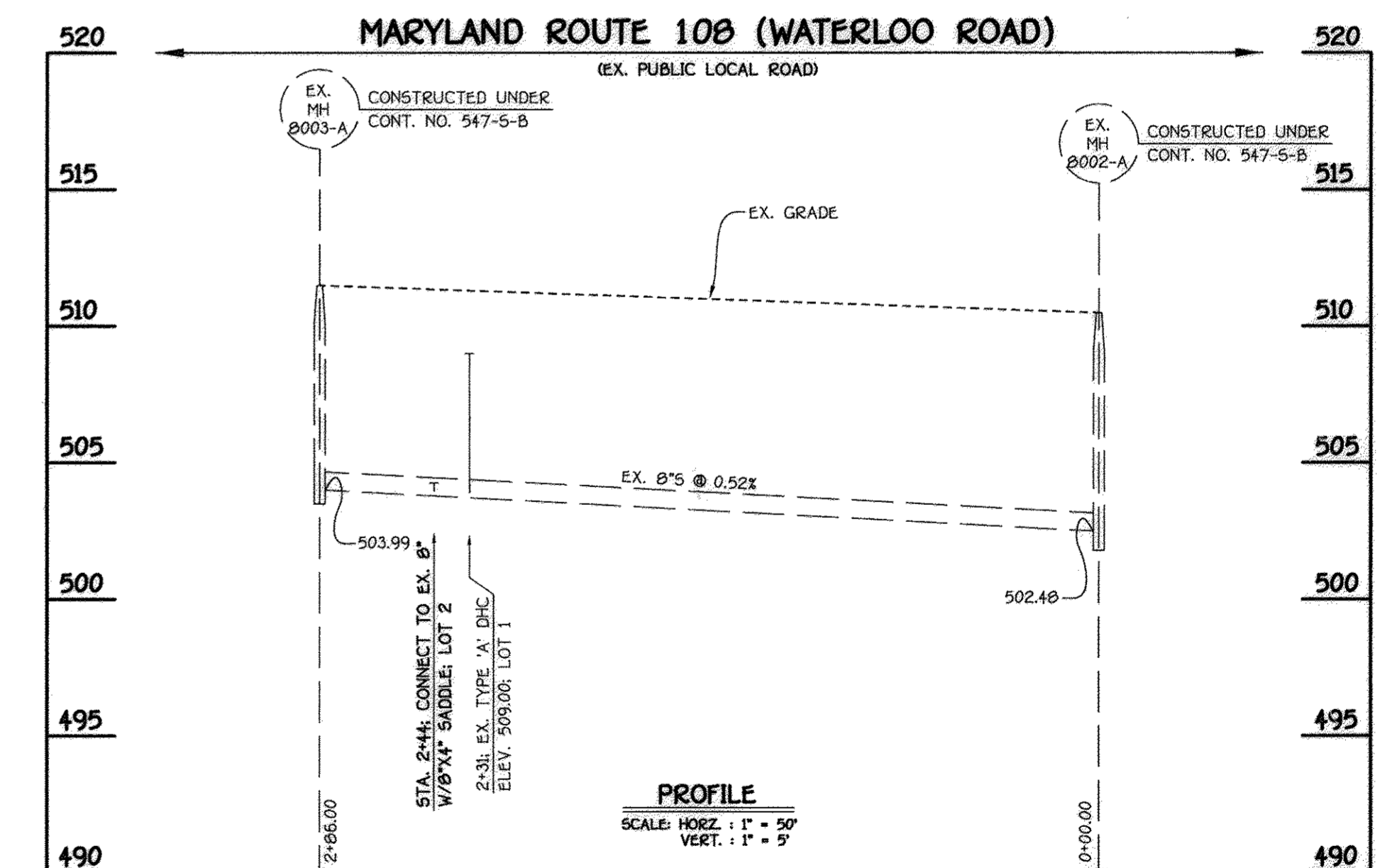
NOTE: SET MH RIM FLUSH W/EXISTING GROUND.

SHC INVERT @ EDGE OF EASEMENT		
STATION	LOT	ELEVATION
482.65	LOT 3	

*M.S.S.E. DENOTES MINIMUM SEWER SERVICE ELEVATION
 LOT 2: NO GRAVITY SEWER SERVICE
 LOT 3: FIRST FLOOR GRAVITY SEWER SERVICE ONLY.
 LOTS 2 & 3 WILL UTILIZE PRIVATE ON-SITE GRINDER PUMP UNITS IN CONJUNCTION WITH A PRIVATE 1-1/4" DISCHARGE LINE TO CONVEY SANITARY WASTEWATER FLOW TO THE 4" CLEAN-OUTS AT THE EDGE OF THE PUBLIC EASEMENT/R-O-W. THE CLEAN-OUTS ARE THE LIMIT OF THE PUBLIC SEWER SYSTEM.

PLAN
SCALE: 1" = 50'

SHC INVERT @ RIGHT-OF-WAY		
STATION	LOT	ELEVATION
504.34	EX. MH 8002-A TO EX. MH 8003-A	



EX. 8" SEWER MAIN (WEST); MD ROUTE 108 (WATERLOO ROAD)

NOTE: THIS ORIGINAL CONSTRUCTION PLAN, SHEET 2 OF 2, SUPERSEDES THE WATER & SEWER MAIN CONSTRUCTION PLAN PREVIOUSLY APPROVED AND SIGNED BY THE CHIEF OF THE DEVELOPMENT ENGINEERING DIVISION, DEPARTMENT OF PLANNING AND ZONING, ON MAY 30, 2008.

CONTRACT NO. 24-4571-D
 EDWARDS PROPERTY
 LOTS 1 THRU 3
 WATER AND SEWER MAIN EXTENSIONS
 HOWARD COUNTY, MARYLAND

DEPARTMENT OF PUBLIC WORKS
 HOWARD COUNTY, MARYLAND

Chief, Bureau of Utilities: *John C. Lee* DATE: 7/8/09

DEPARTMENT OF PLANNING AND ZONING
 HOWARD COUNTY, MARYLAND

Chief, Development Engineering Division: *William J. ...* DATE: 7/8/09

FISHER, COLLINS & CARTER, INC.
 CIVIL ENGINEERING CONSULTANTS & LAND SURVEYORS
 10272 BATHURST NATIONAL PIKE
 ELLOTT CITY, MARYLAND 21042
 (410) 461-2295

PROFESSIONAL ENGINEER
 TERRELL A. FISHER

DESIGNED BY: B.C.R.
 DRAWN BY: B.C.R.
 CHECKED BY: P.W.K.
 DATE: 2/11/13
 BY NO. AS-BUILT REVISION DATE

WATER AND SEWER MAINS
 PLAN, PROFILES & CHARTS

60' SCALE MAP NO. 31 BLOCK NO. 16
 F.C.C. WORK ORDER NO. 30805
 FILE NAME: WATER AND SEWER MAIN EXTENSION PLAN SHEET

EDWARDS PROPERTY
 LOTS 1 THRU 3
 CONTRACT NO. 24-4571-D
 SIXTH ELECTION DISTRICT
 HOWARD COUNTY, MARYLAND

SCALE AS SHOWN
 SHEET 2 of 2