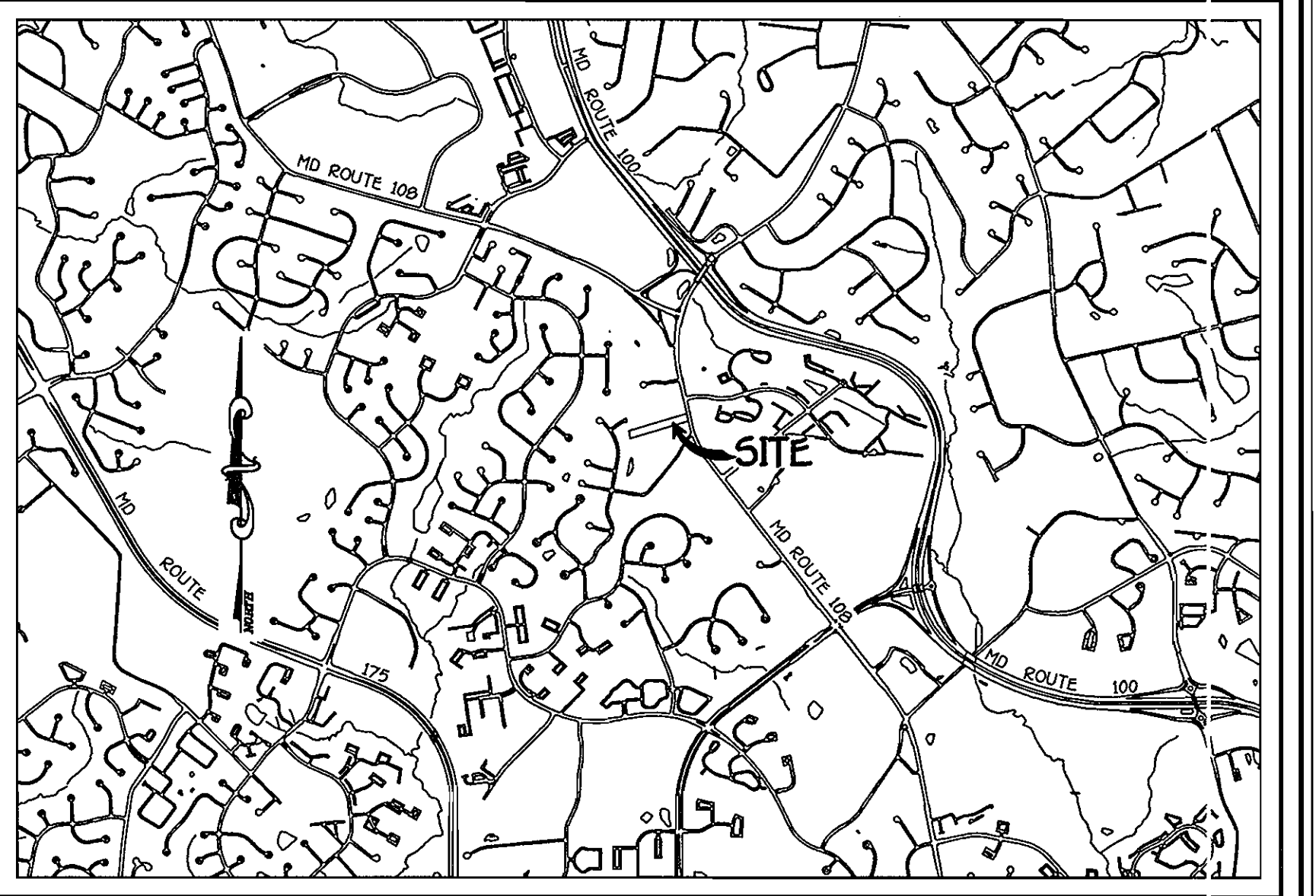
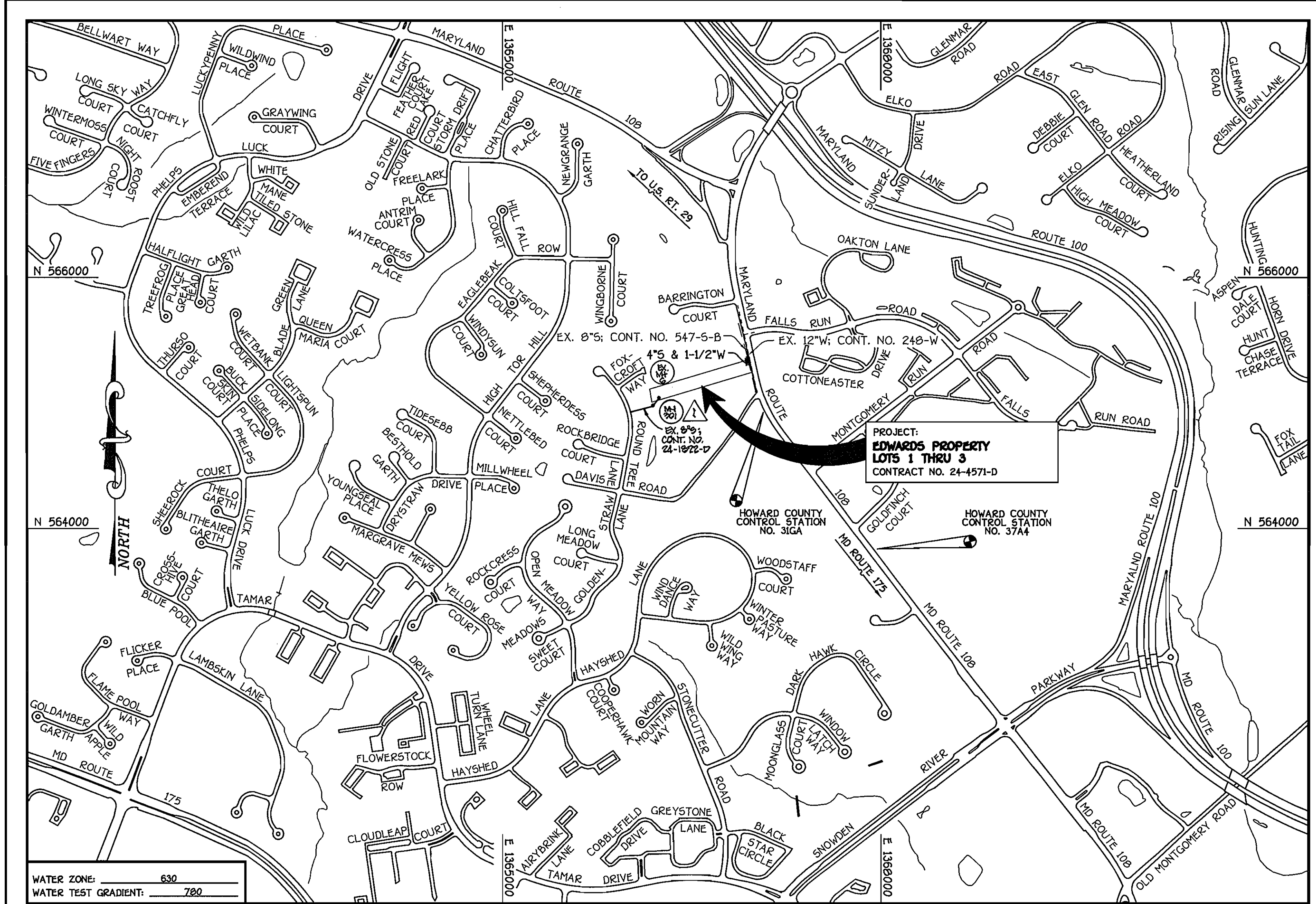


QUANTITIES				
ITEM	ESTIMATED	QUANTITIES	AS-BUILT	SUPPLIER
4" SEWER	20 L.F.			
SEWER CLEAN-OUTS	2 EACH			
1-1/2" W.C.	70 L.F.			
OUTSIDE METER SETTING	2 EACH			
6" SEWER	84 L.F.			
MANHOLE	1 EACH			
NAME OF UTILITY CONTRACTOR:				
SURVEY & DRAFTING DIVISION AS-BUILT DATE:				



LOCATION MAP
SCALE: 1" = 200'

GENERAL NOTES

- PART I
- APPROXIMATE LOCATIONS OF EXISTING MAINS ARE SHOWN. THE CONTRACTOR SHALL TAKE ALL NECESSARY PRECAUTIONS TO PROTECT EXISTING MAINS AND SERVICES AND MAINTAIN UNINTERRUPTED SERVICE. ANY DAMAGE INCURRED SHALL BE REPAIRED IMMEDIATELY TO THE SATISFACTION OF THE ENGINEER AT THE CONTRACTOR'S EXPENSE.
 - TOPOGRAPHIC FIELD SURVEYS WERE PERFORMED ON OR ABOUT OCTOBER, 2006 BY FISHER, COLLINS & CARTER, INC.
 - HORIZONTAL AND VERTICAL CONTROLS:
THE COORDINATES SHOWN ON THE DRAWINGS ARE BASED ON MARYLAND STATE REFERENCE SYSTEM NAD '83/91 AS PROJECTED BY HOWARD COUNTY GEODETIC CONTROL STATIONS NO. 316A & NO. 374A. SEE THIS SHEET FOR BENCHMARK INFORMATION. ALL VERTICAL CONTROLS ARE BASED ON NAVD 83. VERTICAL CONTROLS ARE BASED ON TRAVELER POINT NO. 7095; A REBAR & CAP SET ALONG MARYLAND ROUTE 108; ELEV. 54.86
 - ALL PIPE ELEVATIONS SHOWN ARE INVERT ELEVATIONS UNLESS OTHERWISE NOTED ON THE PLANS.
 - CLEAR ALL UTILITIES BY A MINIMUM OF 12 INCHES. CLEAR ALL POLES BY 5'-0" MINIMUM OR TUNNEL AS REQUIRED UNLESS OTHERWISE NOTED. THE OWNER HAS CONTACTED THE UTILITY COMPANIES AND HAS MADE ARRANGEMENTS FOR BRACING OF POLES AS SHOWN ON THE DRAWINGS. IN THE EVENT THE CONTRACTOR'S WORK REQUIRES BRACING OF ADDITIONAL POLES, ANY COST INCURRED BY THE OWNER FOR THE BRACING OF THE ADDITIONAL POLES OR DAMAGES SHALL BE DEDUCTED FROM MONIES OWED THE CONTRACTOR. THE CONTRACTOR SHALL COORDINATE WITH THE UTILITY COMPANIES TO SCHEDULE THE BRACING OF THE POLES.
 - FOR DETAILS NOT SHOWN ON THE DRAWINGS, AND FOR MATERIALS AND CONSTRUCTION METHODS, USE HOWARD COUNTY DESIGN MANUAL, VOLUME IV, STANDARD SPECIFICATIONS AND DETAILS FOR CONSTRUCTION (LATEST EDITION). THE CONTRACTOR SHALL HAVE A COPY OF VOLUME IV ON THE JOB SITE.
 - WHERE TEST PITS HAVE BEEN MADE ON EXISTING UTILITIES, THEY ARE NOTED BY THE SYMBOL AT THE LOCATIONS OF THE TEST PITS. A NOTE OR NOTES CONTAINING THE RESULTS OF THE TEST PIT OR PITS IS INCLUDED ON THE DRAWINGS. EXISTING UTILITIES IN THE VICINITY OF THE PROPOSED WORK FOR WHICH TEST PITS HAVE NOT BEEN DUG SHALL BE LOCATED BY THE CONTRACTOR TWO WEEKS IN ADVANCE OF CONSTRUCTION OPERATIONS AT HIS OWN EXPENSE.
 - THE CONTRACTOR SHALL NOTIFY THE FOLLOWING UTILITY COMPANIES OR AGENCIES AT LEAST FIVE WORKING DAYS BEFORE STARTING WORK SHOWN ON THESE PLANS:
AT&T 1-800-252-1133
BGE (CONSTRUCTION SERVICES) 410-850-4620
BGE (EMERGENCY) 410-685-1400
BUREAU OF UTILITIES 410-313-4900
COLONIAL PIPELINE CO. 410-795-1399
MISS UTILITY 1-800-257-7777
STATE HIGHWAY ADMINISTRATION 410-531-5533
VERIZON 1-800-743-0033/410-224-9210
 - TREES AND SHRUBS ARE TO BE PROTECTED FROM DAMAGE TO THE MAXIMUM EXTENT. TREES AND SHRUBS LOCATED WITHIN THE CONSTRUCTION STRIP ARE NOT TO BE REMOVED OR DAMAGED BY THE CONTRACTOR.
 - CONTRACTOR SHALL REMOVE TREES, STUMPS AND ROOTS ALONG THE LINE OF EXCAVATION. PAYMENT FOR SUCH REMOVAL SHALL BE INCLUDED IN THE UNIT PRICE BID FOR THE CONSTRUCTION OF THE MAIN.
 - THE CONTRACTOR SHALL NOTIFY THE BUREAU OF HIGHWAYS, HOWARD COUNTY, AT (410)-313-7450 AT LEAST FIVE WORKING DAYS BEFORE OPEN CUTTING OR BORING/JACKING OF ANY COUNTY ROAD FOR LAYING WATER/SEWER MAINS OR HOUSE CONNECTIONS. APPROVAL OF THESE DRAWINGS WILL CONSTITUTE COMPLIANCE WITH DPW REQUIREMENTS PER SECTION 18.114(d) OF THE HOWARD COUNTY CODE.

TYPE OF BUILDING:	RESIDENTIAL - SINGLE FAMILY DETACHED
NUMBER OF LOTS:	3 (3 BUILDABLE)
NO. OF WATER HOUSE CONNECTIONS:	-2-
NO. OF SEWER HOUSE CONNECTIONS:	-2-
DRAINAGE AREA:	LITTLE PATUXENT
TREATMENT PLANT:	LITTLE PATUXENT WATER RECLAMATION PLANT; SAVAGE MD.

VICINITY MAP
SCALE: 1" = 600'

PLAN REFERENCE NUMBERS:
7-09-091 (RECORDED PLAT)

DEVELOPER'S CERTIFICATION
I HEREBY CERTIFY THAT ALL DEVELOPMENT AND CONSTRUCTION WILL BE DONE ACCORDING TO THIS PLAN OF DEVELOPMENT AND PLAN FOR EROSION AND SEDIMENT CONTROL AND THAT ALL RESPONSIBLE PERSONNEL INVOLVED IN THE CONSTRUCTION PROJECT WILL HAVE A CERTIFICATE OF ATTENDANCE AT THE DEPARTMENT OF THE ENVIRONMENT APPROVED TRAINING PROGRAM FOR THE CONTROL OF SEDIMENT AND EROSION BEFORE BEGINNING THE PROJECT. I ALSO AUTHORIZE PERIODIC ON-SITE INSPECTION BY THE HOWARD SOIL CONSERVATION DISTRICT OR THEIR AUTHORIZED AGENTS, AS ARE DEEMED NECESSARY.
Paul W. Koedel FOR: **MR. BENJAMIN EDWARDS** 05-07-08
SIGNATURE OF DEVELOPER DATE

ENGINEER'S CERTIFICATION
I HEREBY CERTIFY THAT THIS PLAN FOR EROSION AND SEDIMENT CONTROL REPRESENTS A PRACTICAL AND WORKABLE PLAN BASED ON MY PERSONAL KNOWLEDGE OF THE SITE CONDITIONS AND THAT IT WAS PREPARED IN ACCORDANCE WITH THE REQUIREMENTS OF THE HOWARD SOIL CONSERVATION DISTRICT.
Paul W. Koedel 05/07/08
SIGNATURE OF ENGINEER DATE

THIS DEVELOPMENT IS APPROVED FOR EROSION AND SEDIMENT CONTROL BY HOWARD SOIL CONSERVATION DISTRICT.
APPROVED: *John K. Klutner* 5/24/08
HOWARD SOIL CONSERVATION DISTRICT DATE

SEDIMENT CONTROL MEASURES FOR THIS CONTRACT WILL BE IMPLEMENTED IN ACCORDANCE WITH SECTION 219 OF THE HOWARD COUNTY DESIGN MANUAL & STANDARDS AND SPECIFICATIONS FOR SOIL EROSION AND SEDIMENT CONTROL IN DEVELOPING AREAS AND AS SHOWN ON THESE PLANS.
Paul W. Koedel FOR: **MR. BENJAMIN EDWARDS** 05-07-08
SIGNATURE OF DEVELOPER DATE

CONTRACT NO. 24-4571-D
EDWARDS PROPERTY
LOTS 1 THRU 3
WATER AND SEWER MAIN EXTENSIONS
HOWARD COUNTY, MARYLAND

BENCHMARK INFORMATION

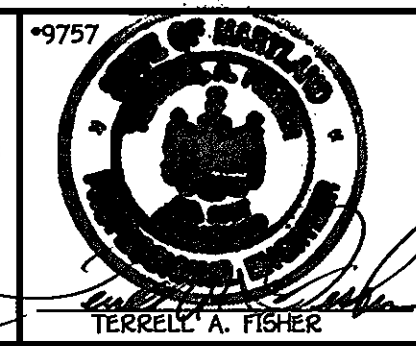
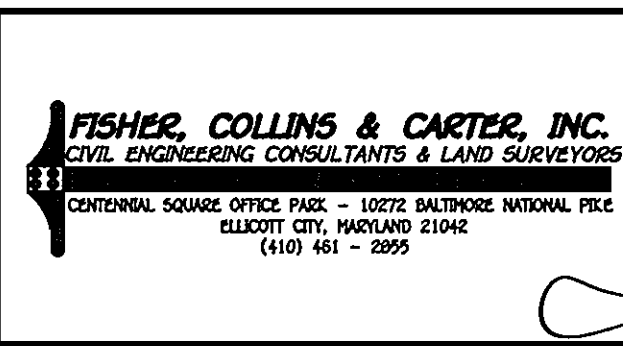
B.M.#1 - HOWARD COUNTY CONTROL STATION #316A (NAD '83) (LOCATED ALONG THE WEST SIDE OF MARYLAND ROUTE 108, APPROX. 46.5' SOUTH OF CAP POLE #15) N 564,925.7547 E 1,387,057.6599 ELEVATION = 511.730
B.M.#2 - HOWARD COUNTY CONTROL STATION #374A (NAD '83) (LOCATED ALONG THE NORTH SIDE OF MARYLAND ROUTE 108, APPROX. 200' SOUTH EAST OF GOLDFINCH COURT) N 563,935.9101 E 1,387,971.6471 ELEVATION = 437.298

DEVELOPER
MR. BENJAMIN EDWARDS
2544 WATERLOO ROAD
COLUMBIA, MD 21045
PHONE: 410-465-5231

CONTRACT NO. 24-4571-D
EDWARDS PROPERTY
LOTS 1 THRU 3
WATER AND SEWER MAIN EXTENSIONS
HOWARD COUNTY, MARYLAND

DEPARTMENT OF PUBLIC WORKS
HOWARD COUNTY, MARYLAND
Shane Coonan 5/17/08
CHIEF, BUREAU OF UTILITIES DATE

DEPARTMENT OF PLANNING AND ZONING
HOWARD COUNTY, MARYLAND
William J. ... 5/21/08
CHIEF, DEVELOPMENT ENGINEERING DIVISION DATE

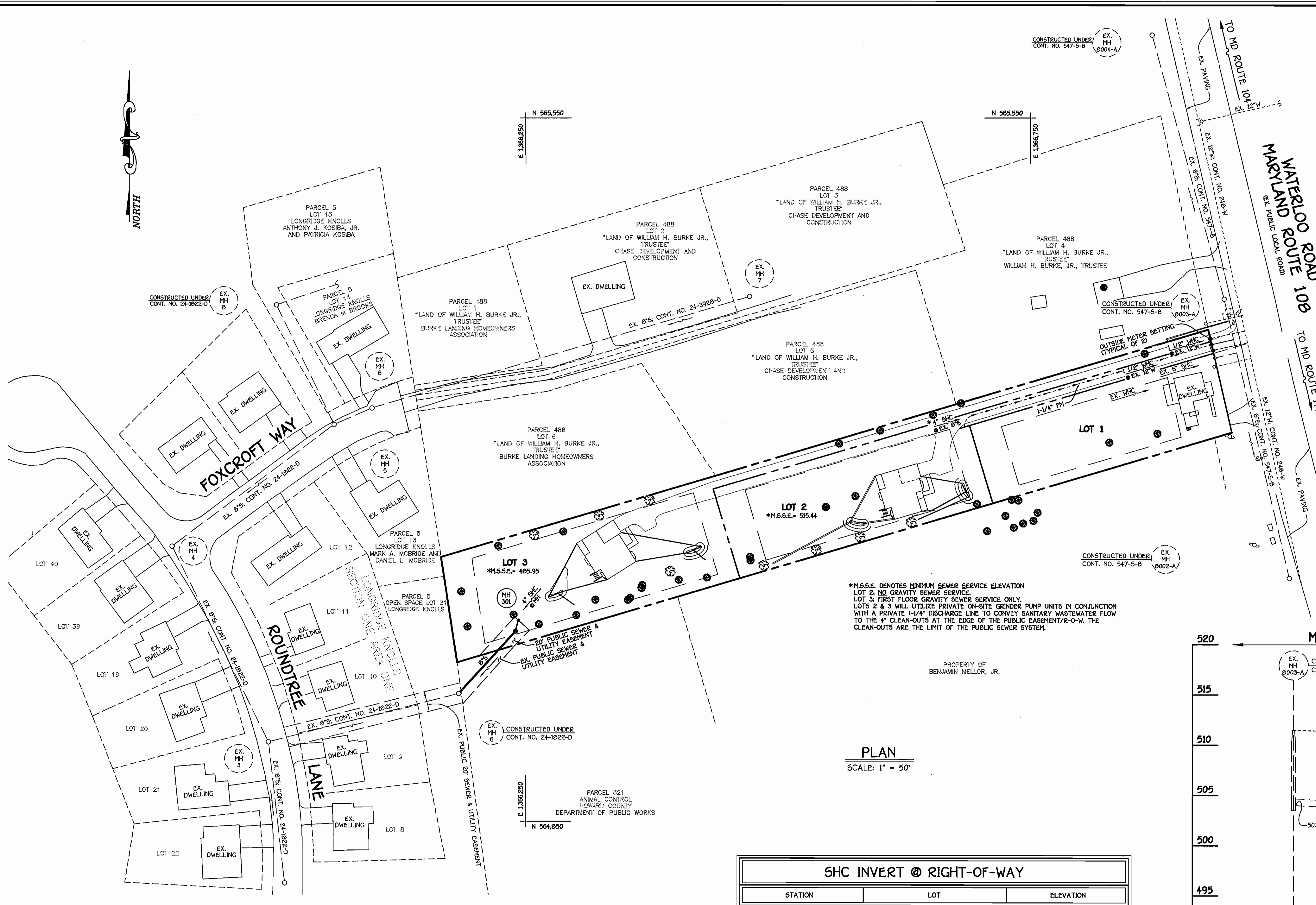


DESIGNED BY:	B.C.R.		
DRAWN BY:	B.C.R.		
CHECKED BY:	P.W.K.	REVISE QUANTITIES TO REFLECT SEWER MAIN EXTENSION	6/22/08
DATE:	MAY, 2008	REVISE VICINITY MAP TO INDICATE SEWER MAIN EXTENSION	6/22/08
BY NO.		REVISION	

WATER AND SEWER MAINS TITLE SHEET	
600' SCALE MAP NO. 31	BLOCK NO. 16
F.C.C. WORK ORDER NO. 30895	
FILE NAME: WATER AND SEWER MAIN EXTENSION TITLE SHEET	

EDWARDS PROPERTY
LOTS 1 THRU 3
CONTRACT NO. 24-4571-D
SIXTH ELECTION DISTRICT
HOWARD COUNTY, MARYLAND

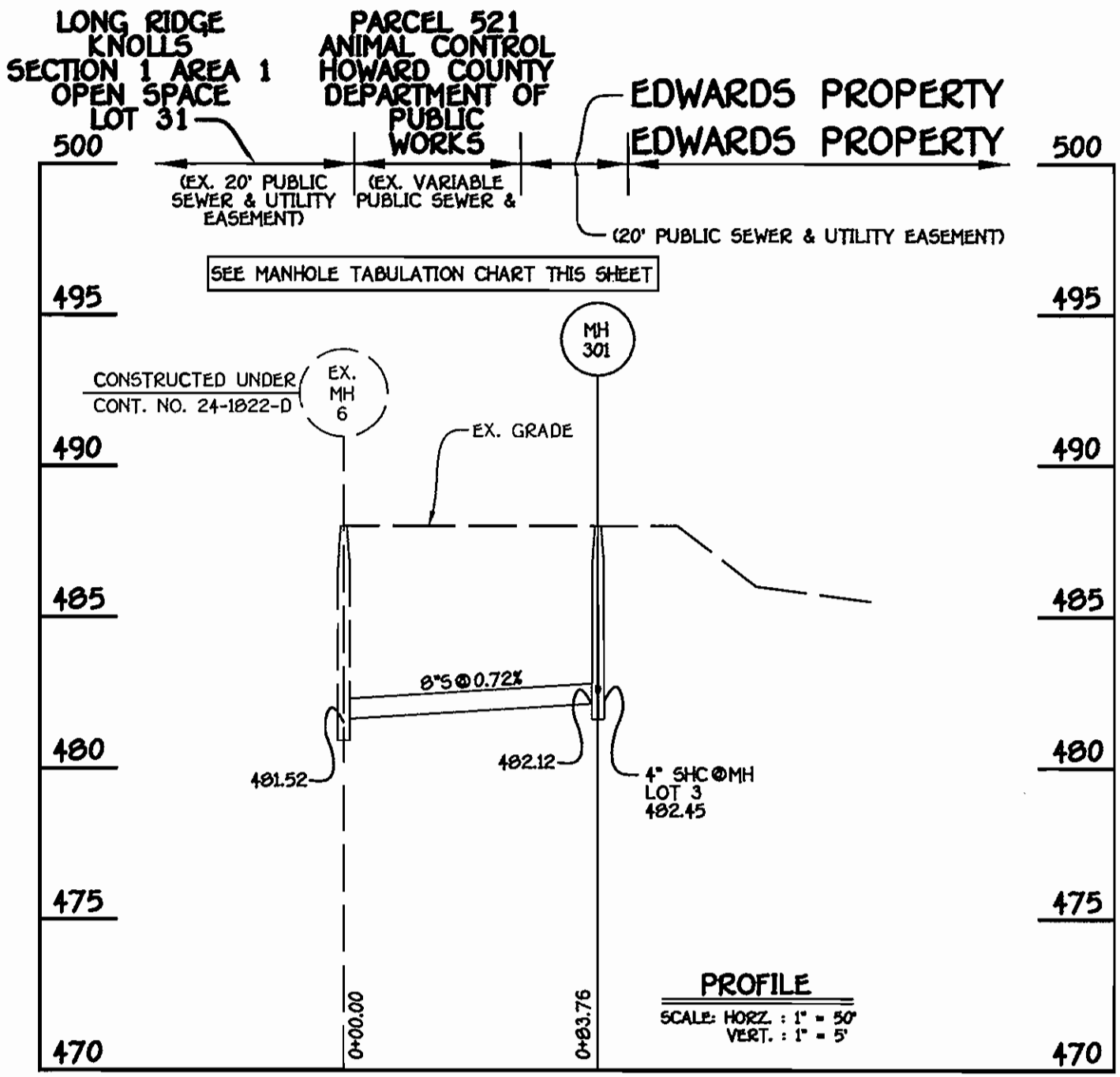
SCALE AS SHOWN
SHEET 1 OF 2



*M.S.E. DENOTES MINIMUM SEWER SERVICE ELEVATION
 LOT 2: NO GRAVITY SEWER SERVICE
 LOT 3: FIRST FLOOR GRAVITY SEWER SERVICE ONLY.
 LOTS 2 & 3 WILL UTILIZE PRIVATE ON-SITE GRINDER PUMP UNITS IN CONJUNCTION WITH A PRIVATE 1-1/4" DISCHARGE LINE TO CONVEY SANITARY WASTEWATER FLOW TO THE 4" CLEAN-OUTS AT THE EDGE OF THE PUBLIC EASEMENT/R-O-W. THE CLEAN-OUTS ARE THE LIMIT OF THE PUBLIC SEWER SYSTEM.

PLAN
 SCALE: 1" = 50'

SHC INVERT @ RIGHT-OF-WAY		
STATION	LOT	ELEVATION
2+44 LT.	EX. MH 8002-A TO EX. MH 8003-A	504.34

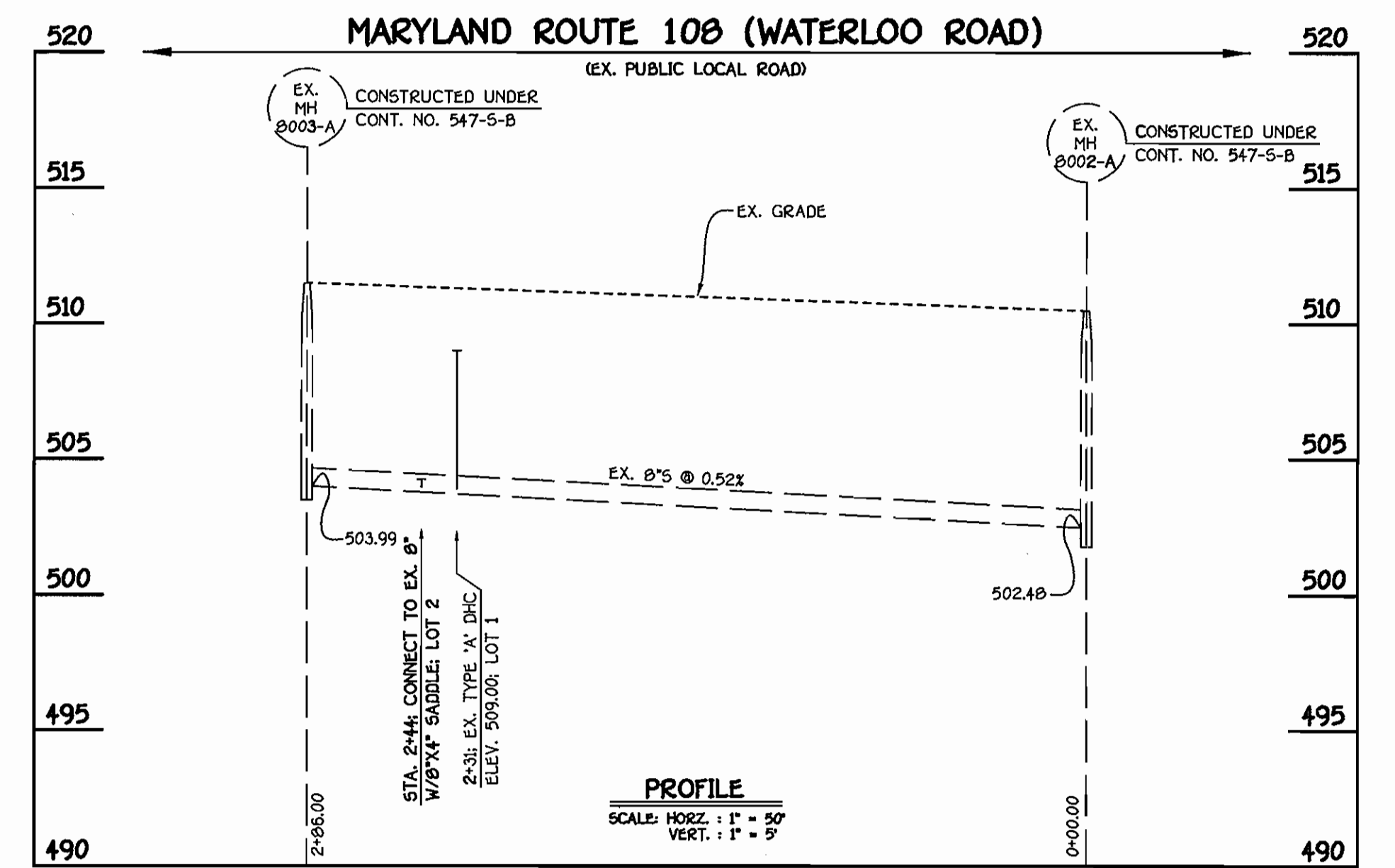


8" SEWER MAIN: LOTS 3

MANHOLE TABULATION CHART			
NO.	NORTHING	EASTING	RIM ELEVATION
301	566301.95	1366239.95	488.00

NOTE: SET MH RIM FLUSH W/EXISTING GROUND.

SHC INVERT @ EDGE OF EASEMENT		
STATION	LOT	ELEVATION
0+83.75	MH 301 TO MH 302	482.45



EX. 6" SEWER MAIN (WEST); MD ROUTE 108 (WATERLOO ROAD)

NOTE: THIS ORIGINAL CONSTRUCTION PLAN, SHEET 2 OF 2, SUPERSEDES THE WATER & SEWER MAIN CONSTRUCTION PLAN PREVIOUSLY APPROVED AND SIGNED BY THE CHIEF OF THE DEVELOPMENT ENGINEERING DIVISION, DEPARTMENT OF PLANNING AND ZONING, ON MAY 30, 2008.

DEPARTMENT OF PUBLIC WORKS HOWARD COUNTY, MARYLAND Chief, Bureau of Utilities Date: 7/8/09	DEPARTMENT OF PLANNING AND ZONING HOWARD COUNTY, MARYLAND Chief, Development Engineering Division Date: 7/8/09
---	---

FISHER, COLLINS & CARTER, INC.
 CIVIL ENGINEERING CONSULTANTS & LAND SURVEYORS
 CENTRAL SQUARE OFFICE PARK - 10272 BALTIMORE NATIONAL PkE
 ELKLOTT CITY, MARYLAND 21442
 (410) 461-2999

9757
 STATE OF MARYLAND
 PROFESSIONAL ENGINEER
 TERRELL A. FISHER

DESIGNED BY:	B.C.R.	
DRAWN BY:	B.C.R.	
CHECKED BY:	P.W.K.	
DATE:	JUNE, 2009	
BY NO.		REVISION

WATER AND SEWER MAINS
 PLAN, PROFILES & CHARTS

600' SCALE MAP NO. 31 BLOCK NO. 16
 F.C.C. WORK ORDER NO. 32925
 FILE NAME: WATER AND SEWER MAIN EXTENSION PLAN SHEET

EDWARDS PROPERTY
 LOTS 1 THRU 3
 CONTRACT NO. 24-4571-D
 SIXTH ELECTION DISTRICT
 HOWARD COUNTY, MARYLAND

SCALE
 AS
 SHOWN

SHEET
 2 OF 2

CONTRACT NO. 24-4571-D
 EDWARDS PROPERTY
 LOTS 1 THRU 3
 WATER AND SEWER MAIN EXTENSIONS
 HOWARD COUNTY, MARYLAND

K:\505KPROJ\30805.dwg\30805 M&S BASE PLAN(CONNECTION ONLY).dwg, 6/18/2009 4:00:34 PM