

**GENERAL NOTES**

**PART I**

- APPROXIMATE LOCATION OF EXISTING MAINS ARE SHOWN. THE CONTRACTOR SHALL TAKE ALL NECESSARY PRECAUTIONS TO PROTECT EXISTING MAINS AND SERVICES AND MAINTAIN UNINTERRUPTED SERVICE. ANY DAMAGE INCURRED SHALL BE REPAIRED IMMEDIATELY TO THE SATISFACTION OF THE ENGINEER AT THE CONTRACTOR'S EXPENSE.
- TOPOGRAPHIC FIELD SURVEYS WERE PERFORMED ON MAY 2003, BY POTOMAC AERIAL SURVEYS, INC. SUPPLEMENTED BY FIELD RUN TOPOGRAPHY, PERFORMED BY FREDERICK WARD ASSOCIATES, OCTOBER 2003 AND FIELD RUN TOPOGRAPHY PERFORMED BY ROBERT H. VOGEL ENGINEERING, INC. ON DECEMBER 2006.
- THE COORDINATES SHOWN ON THE DRAWINGS ARE BASED ON MARYLAND STATE REFERENCE SYSTEM NAD '83/'91 AS PROJECTED BY HOWARD COUNTY GEODETIC CONTROL STATIONS 0055 AND 388B.
- ALL VERTICAL CONTROLS ARE BASED ON NAVD' 88. VERTICAL CONTROLS PROVIDED ON DRAWINGS ARE:  
 GEODETIC SURVEY CONTROL 0055 (N 564363.703/E 1,39420.3634)  
 BRASS DISC SET ON TOP OF A CONCRETE MONUMENT, LOCATED IN THE GRASS MEDIAN INTERSECTION OF ROUTE 1 & B&O RAILROAD, 9.3' EAST OF RAIL ROAD AND SOUTH WEST CORNER OF CONC. STEPPED WINGWALLS.  
 GEODETIC SURVEY CONTROL 388B (N 561571.59/E 1,381,586.92)  
 BRASS DISC SET ON TOP OF A CONCRETE MONUMENT, LOCATED IN THE GRASS MEDIAN ALONG ROUTE 1 BETWEEN OLD WASHINGTON BLVD AND LEVERING AVENUE, 142' EAST OF 3881 BENCHMARK AND 9.96' WEST OF PC.
- ALL PIPE ELEVATIONS SHOWN ARE INVERT ELEVATIONS UNLESS OTHERWISE NOTED.
- CLEAR ALL UTILITIES BY A MINIMUM OF 12 INCHES. CLEAR ALL POLES BY 5'-0" MINIMUM OR TUNNEL AS REQUIRED UNLESS OTHERWISE NOTED. THE OWNER HAS CONTACTED THE UTILITY COMPANIES AND HAS MADE ARRANGEMENTS FOR BRACING OF POLES AS SHOWN ON DRAWINGS. IN THE EVENT THE CONTRACTOR'S WORK REQUIRES THE BRACING OF ADDITIONAL POLES, ANY COST INCURRED BY THE OWNER FOR BRACING OF ADDITIONAL POLES OR DAMAGES SHALL BE DEDUCTED FROM MONIES OWED THE CONTRACTOR. THE CONTRACTOR SHALL COORDINATE WITH THE UTILITY COMPANIES TO SCHEDULE THE BRACING OF THE POLES.
- FOR DETAILS NOT SHOWN ON THE DRAWINGS, AND FOR MATERIALS AND CONSTRUCTION METHODS USE, HOWARD COUNTY DESIGN MANUAL, VOLUME IV, STANDARD SPECIFICATIONS AND DETAILS FOR CONSTRUCTION (LATEST EDITION). THE CONTRACTOR SHALL HAVE A COPY OF VOLUME IV ON THE JOB.
- WHERE TEST PITS HAVE BEEN MADE ON EXISTING UTILITIES, THEY ARE NOTED BY THE SYMBOL AT THE LOCATION OF THE TEST PIT. NOTES OR NOTES CONTAINING THE RESULTS OF THE TEST PIT OR PITS IS INCLUDED ON THE DRAWINGS. EXISTING UTILITIES IN THE VICINITY OF THE PROPOSED WORK FOR WHICH TEST PITS HAVE NOT BEEN DUG SHALL BE LOCATED BY THE CONTRACTOR TWO WEEKS IN ADVANCE OF CONSTRUCTION OPERATION AT HIS OWN EXPENSE.
- THE CONTRACTOR SHALL NOTIFY THE FOLLOWING UTILITY COMPANIES OR AGENCIES AT LEAST FIVE WORKING DAYS BEFORE STARTING WORK SHOWN THESE PLANS:  
 AT&T 1-800-252-1133  
 BGE (CONTRACTOR SERVICE) 410-850-4620  
 BGE (EMERGENCY) 410-685-1400  
 BUREAU OF UTILITIES 410-313-4900  
 COLONIAL PIPELINE CO. 410-795-1390  
 MISS UTILITY 1-800-257-7777  
 STATE HIGHWAY ADMINISTRATION 410-531-5533  
 VERIZON 1-800-743-0033/410-224-9210
- TREES AND SHRUBS ARE TO BE PROTECTED FROM DAMAGE TO THE MAXIMUM EXTENT. TREES AND SHRUBS LOCATED WITHIN THE CONSTRUCTION STRIP ARE NOT TO BE REMOVED OR DAMAGED BY THE CONTRACTOR.
- THE CONTRACTOR SHALL REMOVE TREES, STUMPS AND ROOTS ALONG THE LINE OF EXCAVATION. PAYMENT FOR SUCH REMOVAL SHALL BE INCLUDED IN THE UNIT PRICE BID FOR THE CONSTRUCTION OF THE MAIN.
- THE CONTRACTOR SHALL NOTIFY THE BUREAU OF HIGHWAYS, HOWARD COUNTY, AT (410) 313-7450 AT LEAST FIVE WORKING DAYS BEFORE ANY OPEN CUTTING OR BORING, JACKING OF ANY COUNTY ROAD FOR LAYING WATER/SEWER MAINS OR HOUSE CONNECTIONS. THE APPROVAL OF THESE DRAWINGS WILL CONSTITUTE COMPLIANCE WITH DPW REQUIREMENTS PER SECTION 18.114(g) OF THE HOWARD COUNTY CODE.
- A MDE WETLAND PERMIT IS REQUIRED FOR THE DISTURBANCE SHOWN ON THIS PLAN. MDE TRACKING #200862474, NO-IN-STREAM CONSTRUCTION MAY OCCUR FROM 03/01 TO 06/15.

**PART II - WATER**

- ALL WATER MAINS TO BE C-900 PVC (DR-18), UNLESS OTHERWISE NOTED. ALL WATER IN FILL, SHALL HAVE RESTRAINED JOINTS. ALL C-900 PVC MUST COMPLY WITH THE HOWARD COUNTY DESIGN MANUAL VOLUME IV STANDARD SPECIFICATIONS AND DETAILS FOR CONSTRUCTION.
- TOPS OF ALL WATER MAINS TO HAVE A MINIMUM OF 3'-6" COVER UNLESS OTHERWISE NOTED.
- VALVES ADJACENT TO TEES SHALL BE STRAPPED TO TEES.
- ALL FITTINGS SHALL BE BUTTRESSED OR ANCHORED WITH CONCRETE IN ACCORDANCE WITH THE STANDARD DETAILS UNLESS OTHERWISE PROVIDED FOR ON THE DRAWINGS.
- FIRE HYDRANTS SHALL BE SET TO THE BURY LINE ELEVATIONS SHOWN ON THE DRAWINGS. ALL FIRE HYDRANTS SHALL BE RESTRAINED AND BUTTRESSED WITH CONCRETE IN ACCORDANCE WITH THE STANDARD DETAIL. THE SOIL AROUND THE FIRE HYDRANT SHALL BE COMPACTED IN ACCORDANCE WITH SECTION 1000 AND 1005 OF THE STANDARD SPECIFICATIONS. ALL FIRE HYDRANTS ARE TO BE DIP ONLY.
- ALL DUCTILE IRON PIPE (DIP) TO BE USED ON THE PUBLIC WATER SYSTEM SHALL BE CLASS 54. DUCTILE IRON FITTINGS SHALL MEET THE REQUIREMENTS OF THE HOWARD COUNTY DESIGN MANUAL VOLUME IV STANDARD SPECIFICATIONS AND DETAILS FOR CONSTRUCTION.
- THE CONTRACTOR SHALL NOT OPERATE ANY WATER MAIN VALVES ON THE EXISTING WATER SYSTEM.
- ALL WATER HOUSE CONNECTIONS SHALL BE FOR INSIDE METER SETTING UNLESS OTHERWISE NOTED ON THE PLANS OR IN SPECIFICATIONS.
- FOR SPRINKLER SYSTEM FOR ALL TOWN HOMES OR MULTIFAMILY DWELLING UNITS SHOULD HAVE A MINIMUM OF 1" CONNECTION WITH A 3/4" METER.
- ALL WATER MAIN CONSTRUCTION SHALL CONSIST OF PVC MAIN WITH EPOXY COATED DIP FITTINGS OR PVC MAIN WITH PVC FITTINGS.
- ALL VALVES ARE TO BE ATTACHED WITH IRON FITTINGS OR CONCRETE ANCHORS.

SEDIMENT CONTROL MEASURES WILL BE IMPLEMENTED IN ACCORDANCE WITH SECTION 219 OF THE SPECIFICATIONS AND WITH FINAL ROAD CONSTRUCTION PLAN F-08-63

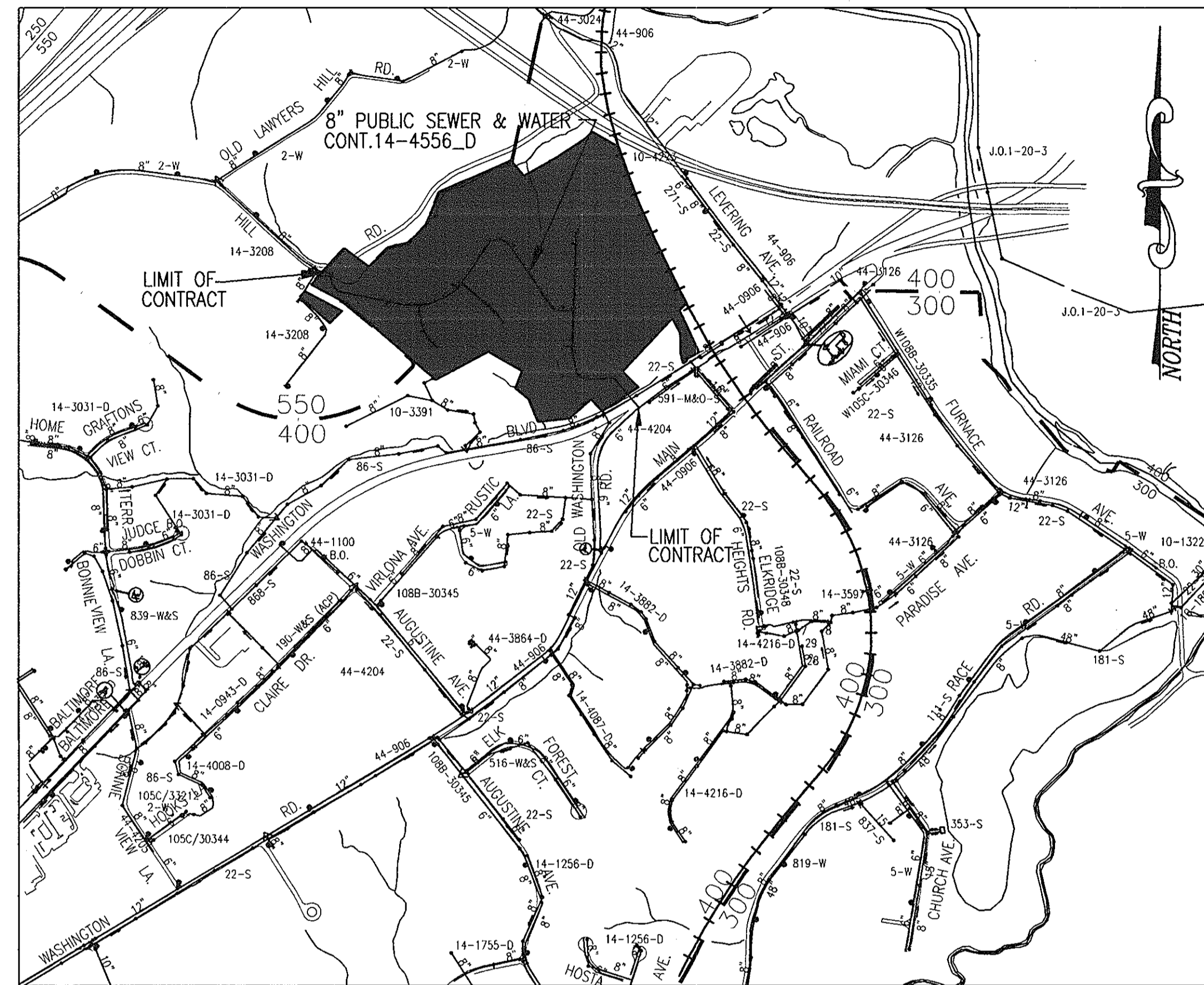
THIS DEVELOPMENT IS APPROVED FOR SOIL EROSION AND SEDIMENT CONTROL BY THE HOWARD COUNTY SOIL CONSERVATION DISTRICT.

*John R. Robertson* 12/21/09  
 SOIL CONSERVATION DISTRICT  
 REF: F-08-63

REVIEWED FOR HOWARD COUNTY SOIL CONSERVATION DISTRICT AND MEETS TECHNICAL REQUIREMENTS.

*[Signature]*  
 U.S. SOIL CONSERVATION DISTRICT  
 REF: F-08-63

# FINAL WATER AND SEWER CLAREMONT OVERLOOK CONTRACT NO. 14-4556-D



**VICINITY MAP**

SCALE: 1"=600'

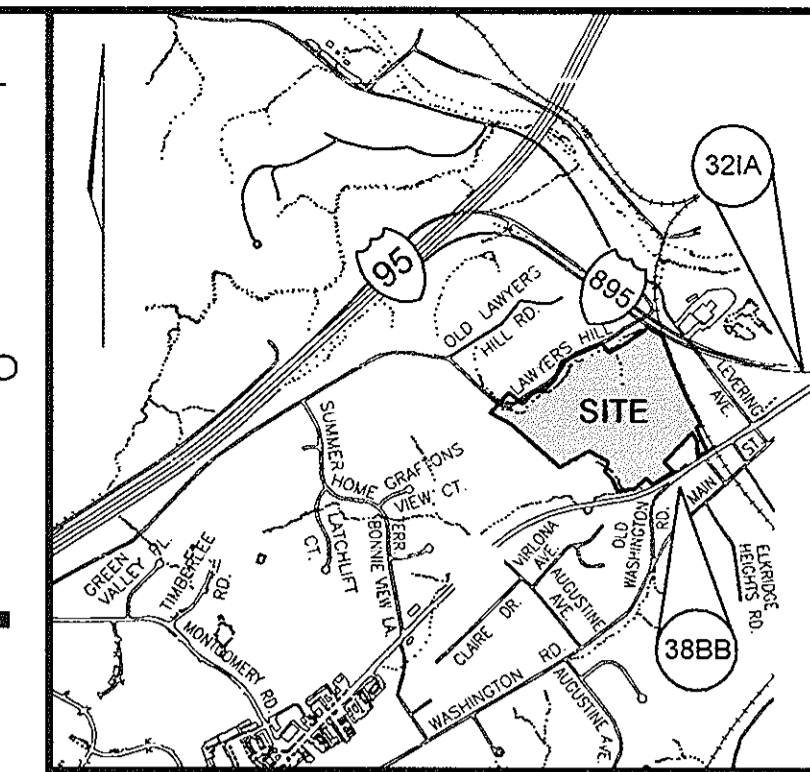
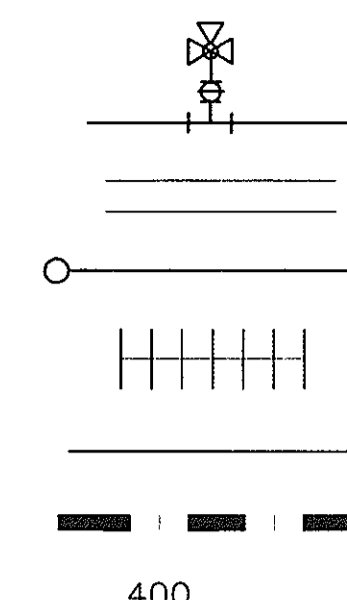
TYPE OF BUILDING:	SINGLE HOUSE
NO. OF BUILDINGS:	49
NO. OF WATER HOUSE CONNECTIONS:	49
NO. OF SEWER HOUSE CONNECTIONS:	49
DRAINAGE AREA:	PATAPSCO RIVER
TREATMENT PLANT:	DEEP RUN

**PART III - SEWER**

- NOTES FOR PVC WATER MAIN**
- ALL PVC WATER MAINS SHALL BE MEETING THE HOWARD COUNTY DESIGN MANUAL VOLUME IV STANDARD SPECIFICATIONS AND DETAILS.
  - ALL DUCTILE IRON PIPE (DIP) TO BE USED ON THE PUBLIC WATER SYSTEM SHALL BE CLASS 54. DUCTILE IRON FITTING SHALL MEET THE REQUIREMENTS OF THE HOWARD COUNTY DESIGN MANUAL VOLUME IV STANDARD SPECIFICATIONS AND DETAILS FOR CONSTRUCTION.
  - FIRE HYDRANTS ARE DIP ONLY.
  - VALVES ARE TO BE ATTACHED WITH IRON FITTINGS OR CONCRETE ANCHORS.
  - THE DIMENSION RATIO FOR THE PVC MAIN SHALL BE DR 18.
  - WATER MAIN CONSTRUCTION SHALL CONSIST OF PVC MAIN WITH EPOXY COATED DIP FITTINGS OR PVC MAIN WITH OVC FITTINGS.
- PART III - SEWER**
- ALL SEWER MAINS SHALL BE C-900 PVC (DR-18), UNLESS OTHERWISE NOTED. ALL SEWER IN FILL, SHALL HAVE RESTRAINED JOINTS.
  - ALL MANHOLES SHALL BE 4'-0" INSIDE DIAMETER UNLESS OTHERWISE NOTED.
  - FORCE MAINS SHALL BE D.I.P. ONLY.
  - MANHOLES SHOWN WITH 12" AND 16" WALLS ARE FOR BRICK MANHOLES ONLY.
  - MANHOLES DESIGNATED W.T. IN PLAN AND PROFILE SHALL HAVE WATERTIGHT FRAME AND COVERS, STANDARD DETAIL CS 52. WHERE WATERTIGHT FRAME AND COVER IS USED, SET TOP OF FRAME 1'-6" ABOVE FINISHED GRADE UNLESS OTHERWISE NOTED ON THE DRAWINGS.
  - HOUSE(S) WITH THE SYMBOL "C.N.S." INDICATES THAT CELLAR CANNOT BE SERVED.

**LEGEND**

- EXISTING WATERLINE
- EXISTING ROADWAY
- EXISTING SEWER
- EXISTING RAILROAD
- EXISTING STREAM
- WATER ZONE
- TEST GRADIENT: 400



**LOCATION MAP**  
 SCALE: 1"=2000'  
 ADC COORDINATES: 17 HS

BENCHMARKS			
NO.	NORTHING	EASTING	ELEVATION
321A	565,065.463'	1,395,212.248	27.696'
388B	564,007.646'	1,393,649.975	27.696'

**QUANTITIES**

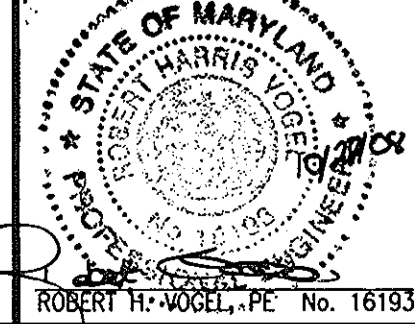
NAME OF UTILITY CONTRACTOR: **CCS**  
 SURVEY AND DRAFTING DIVISION AS-BUILT DATE:

ITEMS	QUANTITIES ESTIMATED	AS-BUILT		
		QUANTITIES	TYPE	MANUFACTURER/SUPPLIER
8" W C-900 (DR-18) (DR-14)	3,798 LF	3418	PVC	DIAMOND PLASTIC/FERGUSON
6" W C-900 (DR-18)	170 LF	170	PVC	" / " / "
8"x6" FIREHYDRANT TEE & VALVE	7 EACH	7 EA.		TEE VALVE TYLER/UNION MUELLER Co. FERGUSON
DIVISION VALVE	1 EACH	1 EA.		MUELLER Co. / FERGUSON
FIREHYDRANT	7 EACH	7 EA.	A473	MUELLER Co. / " "
8"x8" TEE	5 EACH	5	C-153	TYLER/UNION / " "
8"x6" TEE	1 EACH	1	C-153	TYLER/UNION / " "
8" VALVE	9 EACH	9		MUELLER Co. / " "
8" CAP & BUTTRESS	5 EACH	5	C-153	TYLER/UNION / " "
8"x8" TAPPING SLEEVE & VALVE	1 EACH	1	SS	SMITH BLAIR / " "
8"x6" TAPPING SLEEVE & VALVE	1 EACH	1	SS	SMITH BLAIR / " "
1/8 HB	5 EACH	5	C-153	TYLER/UNION / " "
1/16 HB	8 EACH	8	C-153	" / " / "
1/32 HB	17 EACH	17	C-153	" / " / "
1/16 VB	1 EACH	1	C-153	" / " / "
1/32 VB	3 EACH	3	C-153	" / " / "
8" COUPLING	39 EACH	39	PVC	CERTAINTEED
8" SEWER MAIN	3,527 LF	3530	PVC	DIAMOND PLASTIC
SEWER MANHOLES	29 EACH	29	PRECAST	
1" WHC	1,288 LF	1300	KOPPER	MUELLER INDUSTRIES
4" SHC	1,174 LF	1200	SDR-35	DIAMOND PLASTIC

DEPARTMENT OF PUBLIC WORKS  
 HOWARD COUNTY, MARYLAND  
*John R. Robertson* 11/17/09  
 CHIEF, BUREAU OF UTILITIES

DEPARTMENT OF PLANNING & ZONING  
 HOWARD COUNTY, MARYLAND  
*[Signature]* 11/17/09  
 CHIEF, DEVELOPMENT ENGINEERING DIVISION

**ROBERT H. VOGEL ENGINEERING, INC.**  
 ENGINEERS • SURVEYORS • PLANNERS  
 8407 MAIN STREET TEL: 410.461.7666  
 ELLICOTT CITY, MD 21043 FAX: 410.461.8961



DES: RJ  
 DRN: RJ  
 CHK: RHV  
 DATE: OCTOBER 2008  
 BY: K.C.I. 1 AS BUILT  
 REVISION: 10/01/13

**OWNER/DEVELOPER**  
 CLAREMONT L.L.C.  
 11046 DORSCH FARM ROAD  
 ELLICOTT CITY, MARYLAND 21042  
 (410) 730-4556

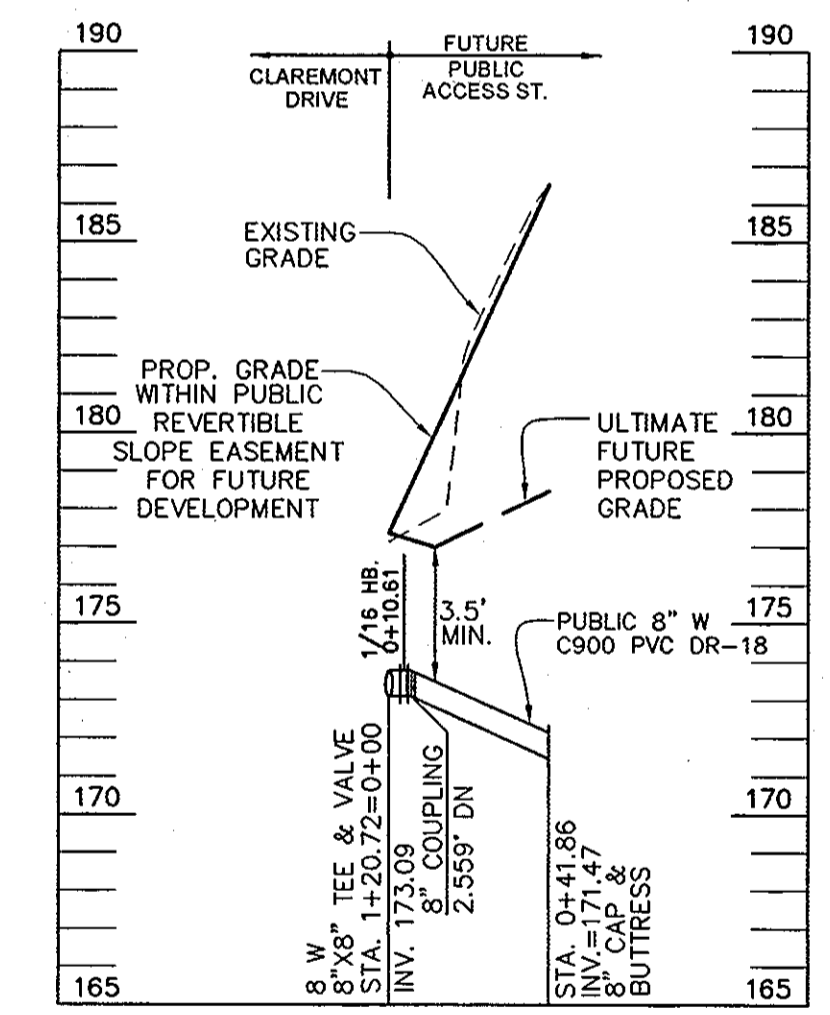
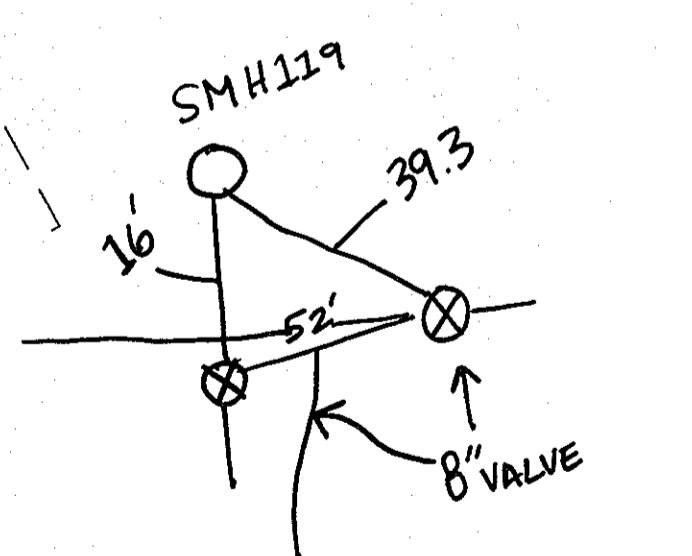
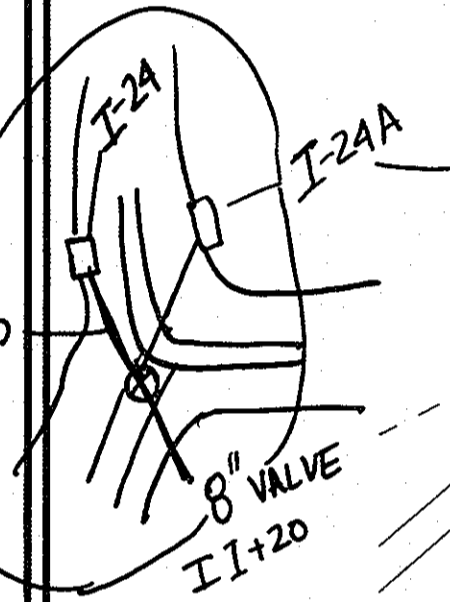
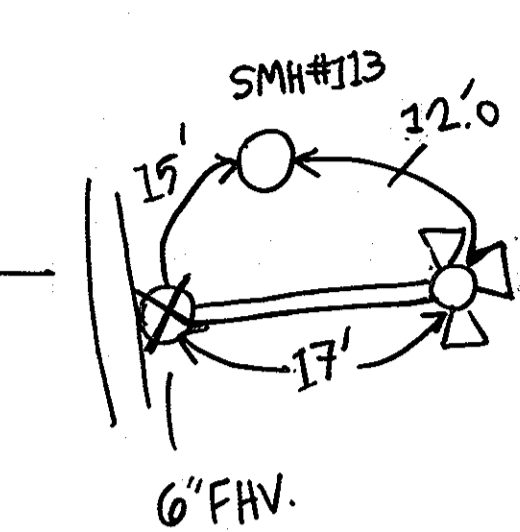
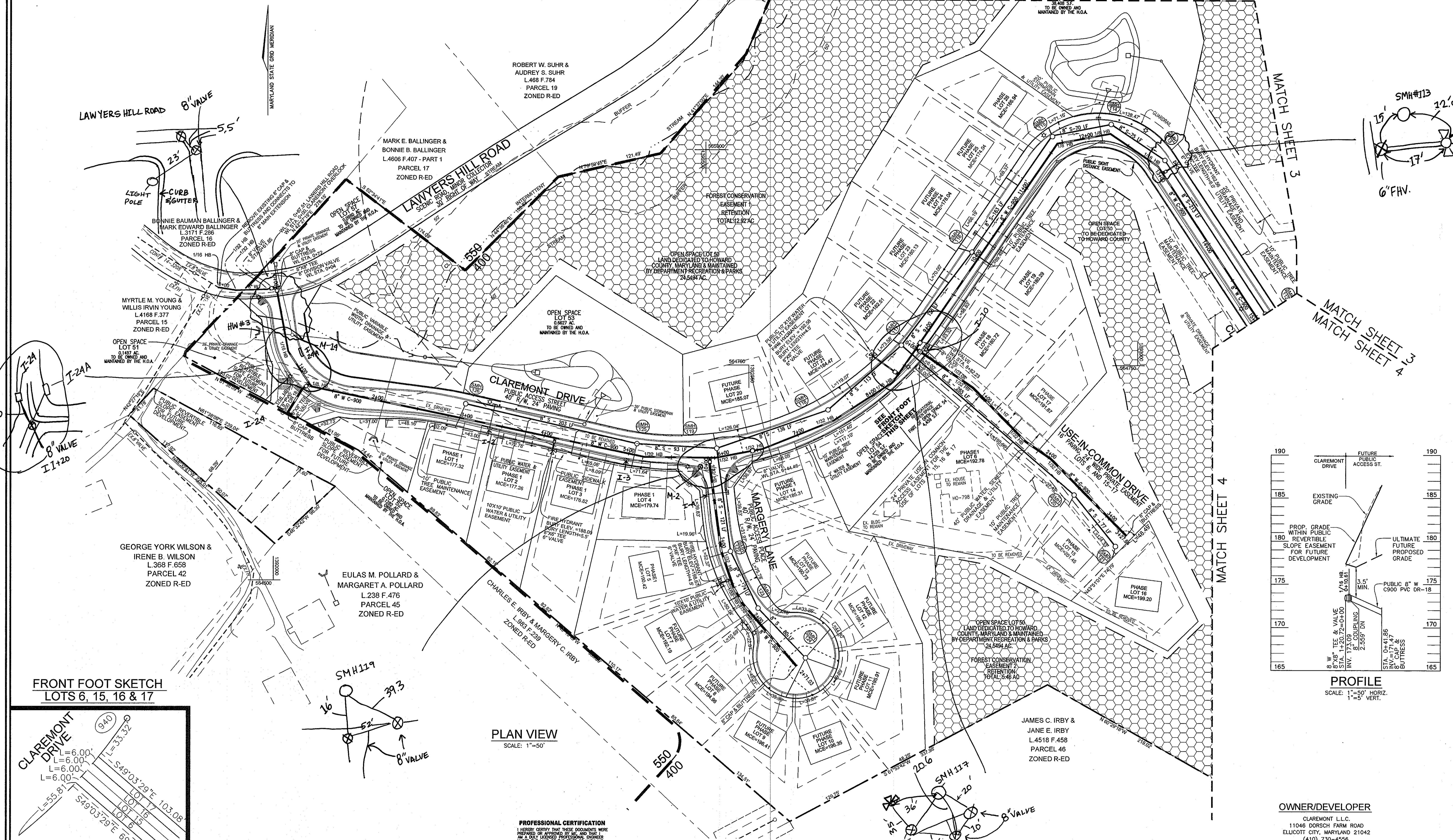
**PROFESSIONAL CERTIFICATION**  
 I HEREBY CERTIFY THAT THESE DOCUMENTS WERE PREPARED OR APPROVED BY ME, AND THAT I AM A DULY LICENSED PROFESSIONAL ENGINEER UNDER THE LAWS OF THE STATE OF MARYLAND, LICENSE NO. 16193  
 EXPIRATION DATE: SEPTEMBER 27, 2010

**FINAL WATER AND SEWER COVER SHEET**

**CLAREMONT OVERLOOK CONTRACT NO. 14-4556-D**

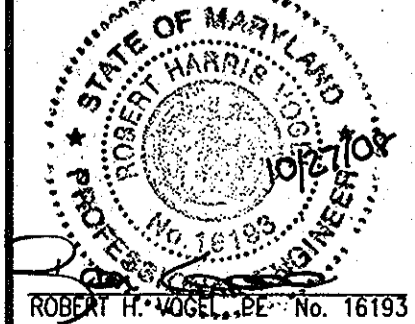
SCALE AS SHOWN  
 SHEET 1 OF 9

REF: F-08-63  
 TAX MAP 32, BLOCK 21  
 3RD ELECTION DISTRICT  
 PARCEL 632 AND P/O 24  
 HOWARD COUNTY, MARYLAND



PROFESSIONAL CERTIFICATION  
I HEREBY CERTIFY THAT THESE DOCUMENTS WERE PREPARED OR APPROVED BY ME, AND THAT I AM A FULLY LICENSED PROFESSIONAL ENGINEER UNDER THE LAWS OF THE STATE OF MARYLAND, LICENSE NO. 16193. EXPIRATION DATE: SEPTEMBER 27, 2010.

**ROBERT H. VOGEL ENGINEERING, INC.**  
ENGINEERS • SURVEYORS • PLANNERS  
8407 MAIN STREET BLDG 21043 TEL: 410.461.7669  
ELLCOTT CITY, MD 21043 FAX: 410.461.6961



DES:	RJ				
DRN:	RJ				
CHK:	RHV				
DATE:	OCTOBER 2008	K.C.I. 1	AS BUILT	07/13	
BY:		NO.		REVISION	DATE

FINAL WATER AND SEWER PLAN VIEW

CLAREMONT OVERLOOK  
CONTRACT NO. 14-4556-D

SCALE AS SHOWN  
SHEET 2 OF 9

DEPARTMENT OF PUBLIC WORKS  
HOWARD COUNTY, MARYLAND

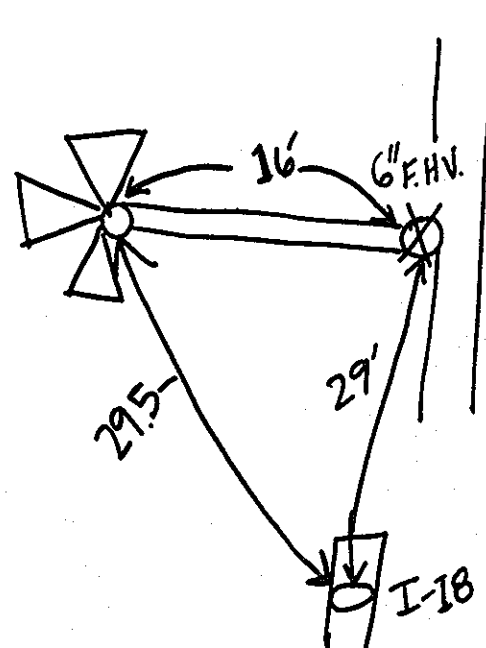
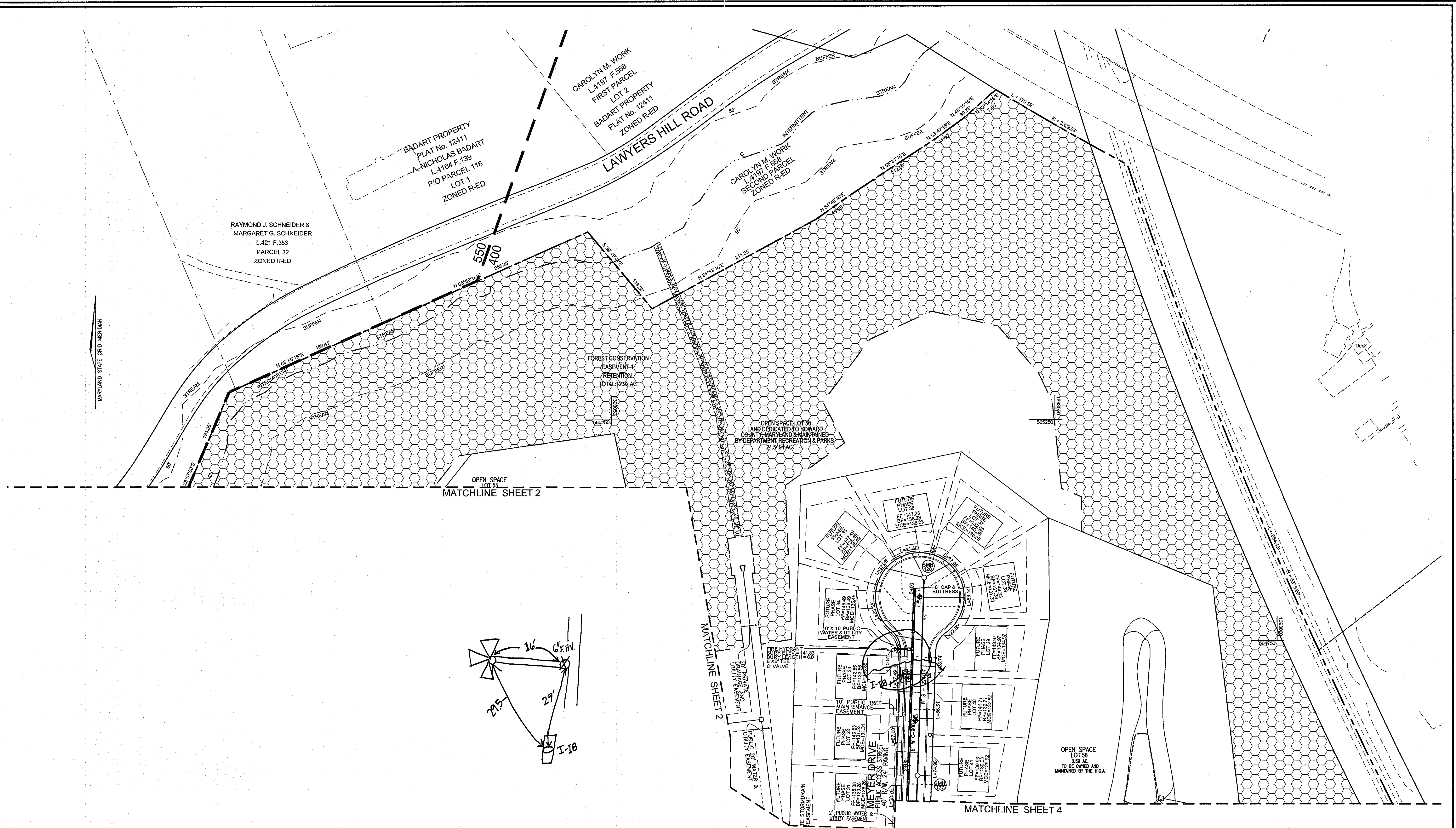
Chief, Bureau of Utilities

DEPARTMENT OF PLANNING & ZONING  
HOWARD COUNTY, MARYLAND

Chief, Development Engineering Division

REF: F-08-63  
TAX MAP 32, BLOCK 21  
3RD ELECTION DISTRICT

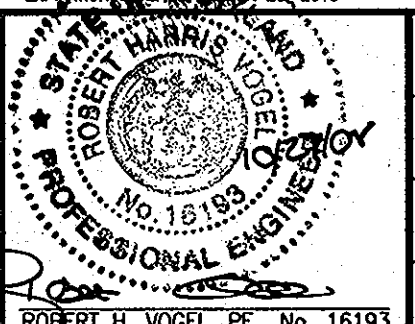
PARCEL 632 AND P/O 24  
HOWARD COUNTY, MARYLAND



PLAN VIEW  
SCALE: 1"=50'

OWNER/DEVELOPER  
CLAREMONT L.L.C.  
11046 DORSCH FARM ROAD  
ELLICOTT CITY, MARYLAND 21042  
(410) 730-4556

PROFESSIONAL CERTIFICATION  
I HEREBY CERTIFY THAT THESE DOCUMENTS WERE  
PREPARED OR APPROVED BY ME, AND THAT I  
AM A FULLY LICENSED PROFESSIONAL ENGINEER  
UNDER THE LAWS OF THE STATE OF MARYLAND,  
LICENSE NUMBER 18193, EXPIRES 12/31/2010



DES:	RJ				
DRN:	RJ				
CHK:	RHV				
DATE:	OCTOBER 2008	BY:	KCI	ASBUILT	10/17/08
		NO.		REVISION	DATE

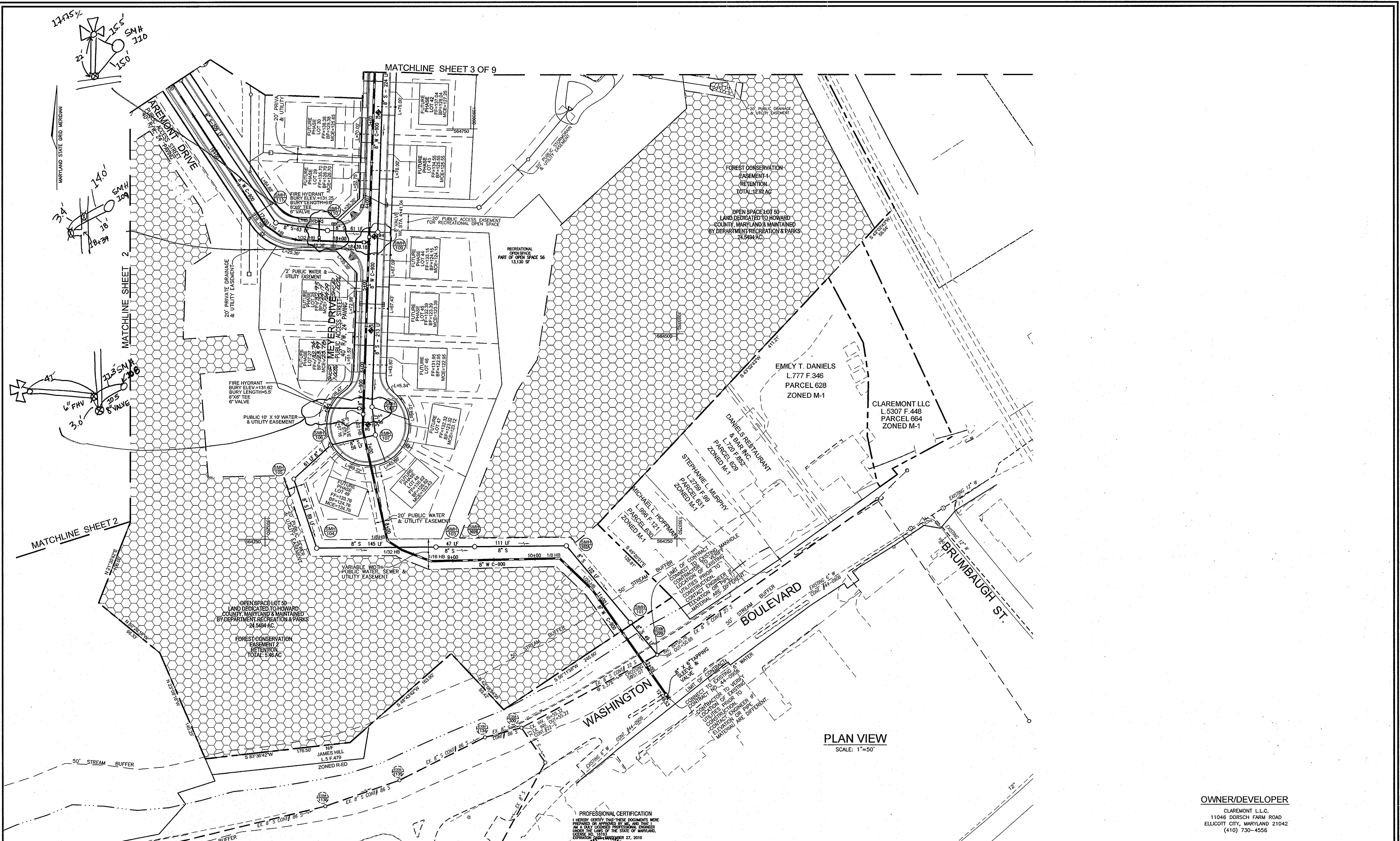
FINAL WATER AND SEWER  
PLAN VIEW  
600' SCALE MAP NO. 32 BLOCK NO. 21

CLAREMONT OVERLOOK  
CONTRACT NO. 14-4556-D  
REF: F-08-63  
TAX MAP 32, BLOCK 21  
3RD ELECTION DISTRICT  
PARCEL 632 AND PIO 24  
HOWARD COUNTY, MARYLAND

SCALE AS SHOWN  
SHEET 3 OF 9

DEPARTMENT OF PUBLIC WORKS HOWARD COUNTY, MARYLAND  Stake Clerk CHIEF, BUREAU OF UTILITIES	DEPARTMENT OF PLANNING & ZONING HOWARD COUNTY, MARYLAND  DATE
--	--

**ROBERT H. VOGEL ENGINEERING, INC.**  
ENGINEERS • SURVEYORS • PLANNERS  
8407 MAIN STREET  
ELLICOTT CITY, MD 21043  
TEL: 410.461.7666  
FAX: 410.461.8961



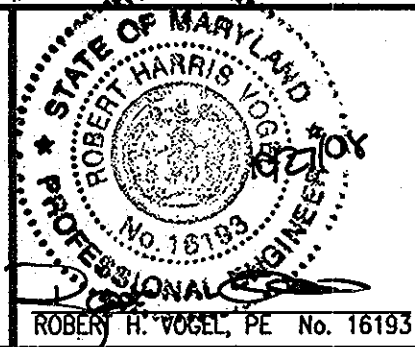
PLAN VIEW  
SCALE: 1"=50'

OWNER/DEVELOPER  
CLAREMONT L.L.C.  
11046 DORSCH FARM ROAD  
ELLCOTT CITY, MARYLAND 21042  
(410) 730-4556

DEPARTMENT OF PUBLIC WORKS  
HOWARD COUNTY, MARYLAND  
  
Stacy C. Carr  
CHIEF, BUREAU OF UTILITIES

DEPARTMENT OF PLANNING & ZONING  
HOWARD COUNTY, MARYLAND  
  
DATE: 10/2/12  
CHIEF, DEVELOPMENT ENGINEERING DIVISION

**ROBERT H. VOGEL**  
ENGINEERING, INC.  
ENGINEERS • SURVEYORS • PLANNERS  
8407 MAIN STREET TEL: 410.461.2666  
ELLCOTT CITY, MD 21043 FAX: 410.461.8961



DES:	RJ				
DRN:	RJ				
CHK:	RHV	K.C.J. 2	AS BUILT	10/17/13	
DATE:	OCTOBER 2008	J.D. 1	UPDATE SEWER DESIGN ELEVATIONS FOR LOTS 27 & 28; CELLARS NOW SERVICEABLE	10/29/12	
BY:	NO.		REVISION	DATE	

FINAL WATER AND SEWER  
PLAN VIEW  
600' SCALE MAP NO. 32 BLOCK NO. 21

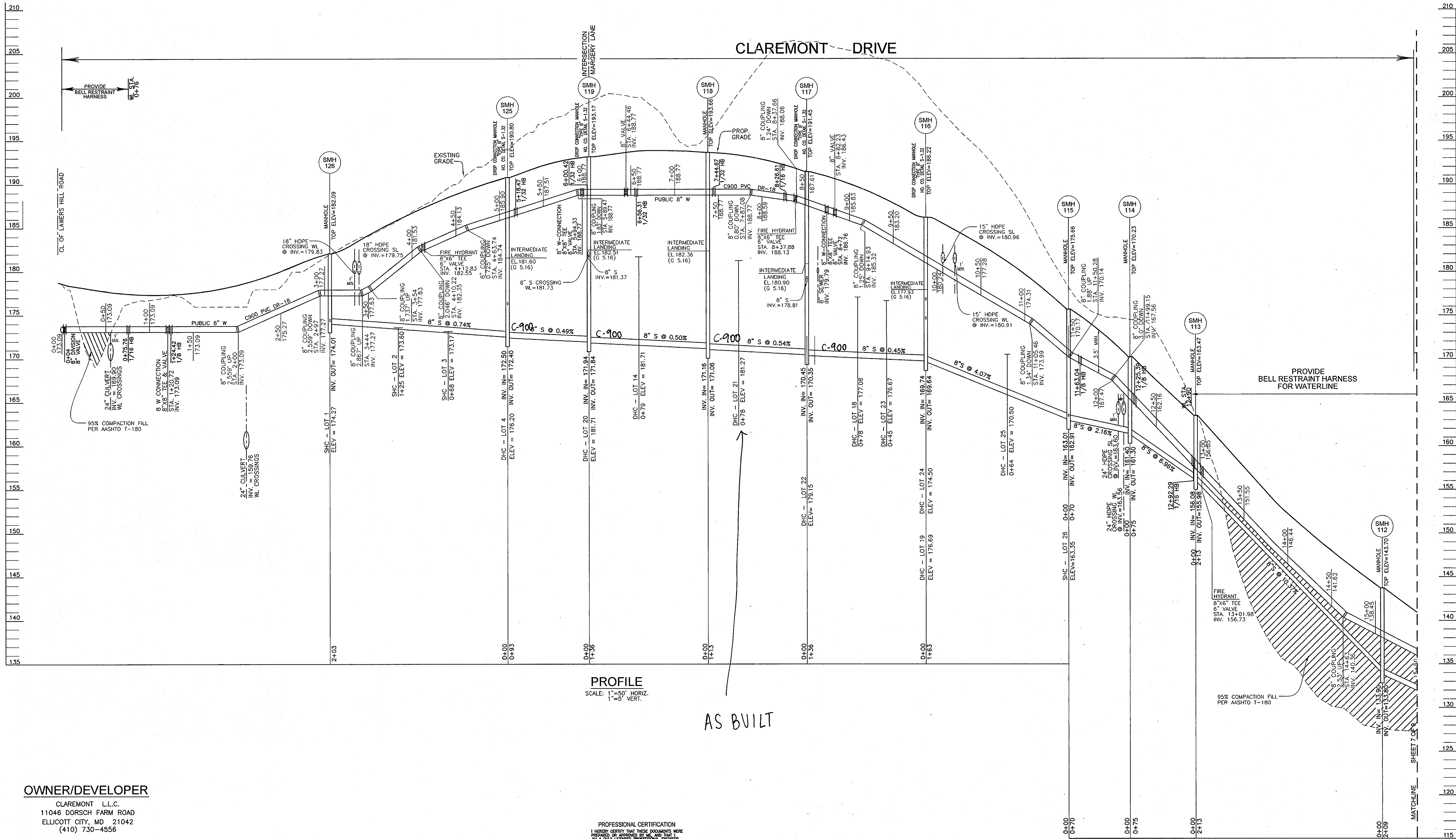
CLAREMONT OVERLOOK  
CONTRACT NO. 14-4556-D  
REF: F-08-63 TAX MAP 32, BLOCK 21 3RD ELECTION DISTRICT  
PARCEL 632 AND P/O 24 HOWARD COUNTY, MARYLAND

SCALE AS SHOWN  
SHEET 4 OF 9

SEWER MANHOLE SCHEDULE						
NO.	TYPE	LOCATION		TOP ELEV.	INV. IN.	INV. OUT.
		NORTHING	EASTING			
SMH 101	STD. PRECAST MH HO. CO. STD. DET. GS.12	N 564148.37	E 1393693.40	57.00	51.13	51.03
SMH 102A	STD. PRECAST MH HO. CO. STD. DET. GS.12, S-1.32	N 564241.69	E 1393615.82	79.00	72.90	69.03
SMH 102B	STD. PRECAST MH HO. CO. STD. DET. GS.12, S-1.32	N 564240.76	E 1393504.41	108.50	102.50	94.34
SMH 103	STD. PRECAST MH HO. CO. STD. DET. GS.12, S-1.32	N 564240.37	E 1393457.41	129.00	116.27	111.67
SMH 104	STD. PRECAST MH HO. CO. STD. DET. GS.12	N 564239.16	E 1393312.67	130.00	117.06	116.98
SMH 105	STD. PRECAST MH HO. CO. STD. DET. GS.12	N 564323.57	E 1393284.98	128.00	117.58	117.48
SMH 106	STD. PRECAST MH HO. CO. STD. DET. GS.12	N 564364.90	E 1393329.60	133.75	119.55	119.45
SMH 107	STD. PRECAST MH HO. CO. STD. DET. GS.12	N 564377.07	E 1393383.96	132.80	120.37	119.83
SMH 108	STD. PRECAST MH HO. CO. STD. DET. GS.12	CL STA. 6+38.90, 4.11' LT.	MEYER DRIVE	131.11	120.20	120.10
SMH 109	STD. PRECAST MH HO. CO. STD. DET. GS.12	CL STA. 4+25.72, 4.11' LT.	MEYER DRIVE	129.07	121.71	121.27
SMH 110	STD. PRECAST MH HO. CO. STD. DET. GS.12	CL STA. 17+83.36, 5.31' RT.	CLAREMONT DRIVE	130.31	123.77	123.67
SMH 111	STD. PRECAST MH HO. CO. STD. DET. GS.12	CL STA. 17+16.17, 4.11' LT.	CLAREMONT DRIVE	133.30	124.17	124.07
SMH 112	STD. PRECAST MH HO. CO. STD. DET. GS.12	CL STA. 15+05, 5.94' LT.	CLAREMONT DRIVE	143.70	133.90	133.80
SMH 113	STD. PRECAST MH HO. CO. STD. DET. GS.12	CL STA. 12+92.07, 6.80' LT.	CLAREMONT DRIVE	163.47	156.08	155.98
SMH 114	STD. PRECAST MH HO. CO. STD. DET. GS.12	CL STA. 12+21.03, 7.85' LT.	CLAREMONT DRIVE	170.23	161.40	161.30
SMH 115	STD. PRECAST MH HO. CO. STD. DET. GS.12	CL STA. 11+56.22, 8.83' LT.	CLAREMONT DRIVE	175.66	163.35	162.91
SMH 116	STD. PRECAST MH HO. CO. STD. DET. GS.12, S-1.32	CL STA. 9+95.28, 4.28' LT.	CLAREMONT DRIVE	186.22	176.99	169.64
SMH 117	STD. PRECAST MH HO. CO. STD. DET. GS.12, S-1.32	CL STA. 8+58.69, 8.86' LT.	CLAREMONT DRIVE	191.45	178.94	170.35
SMH 118	STD. PRECAST MH HO. CO. STD. DET. GS.12	CL STA. 7+42.71, 4.03' LT.	CLAREMONT DRIVE	193.66	171.16	171.06
SMH 119	STD. PRECAST MH HO. CO. STD. DET. GS.12, S-1.32	CL STA. 6+04.21, 2.03' LT.	CLAREMONT DRIVE	193.17	181.32	171.84
SMH 120	STD. PRECAST MH HO. CO. STD. DET. GS.12, S-1.32	N 564599.79	E 1392926.61	USE-IN-COMMON DRIVE	210.98	194.53
SMH 121	STD. PRECAST MH HO. CO. STD. DET. GS.12	N 564540.09	E 1392974.50	USE-IN-COMMON DRIVE	207.61	195.96
SMH 122	STD. PRECAST MH HO. CO. STD. DET. GS.12	CL STA. 1+19.42, 4.93' LT.	MARGERY LANE	197.32	186.29	185.68
SMH 123	STD. PRECAST MH HO. CO. STD. DET. GS.12	CL STA. 1+94.69, 3.40' LT.	MARGERY LANE	201.08	188.85	188.75
SMH 124	STD. PRECAST MH HO. CO. STD. DET. GS.12	CL STA. 2+74.52, 6.29' LT.	MARGERY LANE	204.59	182.12	192.06
SMH 125	STD. PRECAST MH HO. CO. STD. DET. GS.12, S-1.32	CL STA. 5+10.38, 6.62' LT.	CLAREMONT DRIVE	190.80	176.50	172.40
SMH 126	STD. PRECAST MH HO. CO. STD. DET. GS.12	CL STA. 3+06.29, 7.74' LT.	CLAREMONT DRIVE	182.09	174.27	174.01
SMH 127	STD. PRECAST MH HO. CO. STD. DET. GS.12	CL STA. 2+1.08, 4.11' LT.	MEYER DRIVE	136.37	127.00	126.00
SMH 128	STD. PRECAST MH HO. CO. STD. DET. GS.12	N 565071.80	E 1393402.30	MEYER DRIVE NORTH CUL-DE-SAC	143.7	135.30

WATER MAIN LOCATION CHART		
WL STA.	HILL ROAD	APPURTENANCE
WL STA. 0+00	8" x 8" TS&V	
WL STA. 0+00	1/16 HB	
WL STA. 0+20.78	1/32 HB	
WL STA. 0+56.71	1/32 HB	
WL STA. 0+61.85	8" VALVE	
WL STA. 0+67.51	8" x 8" TEE	
WL STA. 0+72	8" CAP & BUTTRISS	
CLAREMONT DRIVE		
WL STA. 0+00	8" x 8" TEE	
WL STA. 0+04	8" DIVISION VALVE	
WL STA. 0+75.76	1/16 HB	
WL STA. 1+20.72	8" x 8" TEE	
WL STA. 1+24.42	1/8 HB	
WL STA. 2+00	8" COUPLING	
WL STA. 2+97	8" COUPLING	
WL STA. 3+44	8" COUPLING	
WL STA. 3+54	8" COUPLING	
WL STA. 4+10.22	8" COUPLING	
WL STA. 4+12.83	FIRE HYDRANT	
WL STA. 4+63.74	8" COUPLING	
WL STA. 5+18.47	1/32 HB	
WL STA. 5+89.47	8" COUPLING	
WL STA. 5+94.33	8" x 8" TEE	
WL STA. 6+00.42	1/32 HB	
WL STA. 6+44.46	8" VALVE	
WL STA. 6+56.31	1/32 HB	
WL STA. 7+44.67	1/32 HB	
WL STA. 7+87.08	8" COUPLING	
WL STA. 8+26.61	1/16 HB	
WL STA. 8+37.88	8" COUPLING	
WL STA. 8+37.88	FIRE HYDRANT	
WL STA. 8+73.84	8" x 8" TEE	
WL STA. 8+82.23	8" VALVE	
WL STA. 9+14.93	8" COUPLING	
WL STA. 11+05.46	8" COUPLING	
WL STA. 11+50.28	8" COUPLING	
WL STA. 11+63.04	1/8 HB	
WL STA. 11+99.15	8" COUPLING	
WL STA. 12+25.39	1/8 HB	
WL STA. 12+92.29	1/16 HB	
WL STA. 13+01.98	FIRE HYDRANT	
WL STA. 14+63	8" COUPLING	
WL STA. 17+08.46	1/16 HB	
WL STA. 17+31.84	1/16 HB	
WL STA. 17+49.15	8" COUPLING	
WL STA. 17+52.79	1/32 HB	
WL STA. 17+64.52	8" COUPLING	
WL STA. 17+78.70	FIRE HYDRANT	
WL STA. 18+33.03	8" VALVE	
WL STA. 18+39.18	8" CAP AND BUTTRISS	
MEYER DRIVE		
WL STA. 0+00	8" CAP & BUTTRISS	
WL STA. 0+68.85	FIRE HYDRANT	
WL STA. 0+92.70	8" COUPLING	
WL STA. 1+00	8" COUPLING	
WL STA. 4+08	8" COUPLING	
WL STA. 4+41.04	8" VALVE	
WL STA. 4+47.69	8" x 8" TEE	
WL STA. 5+22.84	8" COUPLING	
WL STA. 6+09	8" COUPLING	
WL STA. 6+50.25	FIRE HYDRANT	
WL STA. 6+57.16	8" VALVE	
WL STA. 6+76.08	1/32 HB	
WL STA. 7+10.19	8" COUPLING	
WL STA. 7+40.25	8" COUPLING	
WL STA. 7+70.83	8" COUPLING	
WL STA. 8+14.80	1/8 HB	
WL STA. 8+35.75	1/32 HB	
WL STA. 8+73.27	1/16 HB	
WL STA. 8+76.43	1/32 VERTICAL BEND	
WL STA. 9+67.91	8" COUPLING	
WL STA. 9+07.11	8" COUPLING	
WL STA. 9+30.13	8" COUPLING	
WL STA. 10+29.51	1/8 HB	
WL STA. 10+31.83	8" COUPLING	
WL STA. 10+65.70	8" COUPLING	
WL STA. 10+84.28	1/32 HB	
WL STA. 11+31.64	8" COUPLING	
WL STA. 11+37	8" COUPLING	
WL STA. 11+42.80	8" COUPLING	
WL STA. 11+51.74	1/32 VERTICAL BEND	
WL STA. 11+59.76	1/16 VERTICAL BEND	
WL STA. 11+79.12	1/32 VERTICAL BEND	
WL STA. 12+04.20	8" COUPLING	
WL STA. 12+42.53	8" VALVE	
WL STA. 12+47.06	8" x 8" TEE	
WL STA. 12+47.06	8" TS&V	
MARGERY LANE		
WL STA. 0+00	8" x 8" TEE	
WL STA. 0+47.79	8" VALVE	
WL STA. 0+49.45	1/32 HB	
WL STA. 0+32	8" COUPLING	
WL STA. 0+59	8" COUPLING	
WL STA. 1+03	8" COUPLING	
WL STA. 1+09	1/32 HB	
WL STA. 1+44.32	FIRE HYDRANT	
WL STA. 1+53.71	1/32 HB	
WL STA. 1+76.10	1/32 HB	
WL STA. 2+71.03	8" CAP & BUTTRISS	
USE-IN-COMMON DRIVE		
WL STA. 0+00	8" x 8" TEE	
WL STA. 0+05.83	8" VALVE	
WL STA. 0+80.26	1/32 HB	
WL STA. 1+66.86	1/32 HB	
WL STA. 2+02.64	1/32 HB	
WL STA. 2+17.16	8" COUPLING	
WL STA. 2+50	8" COUPLING	
WL STA. 2+73.04	8" COUPLING	
WL STA. 3+27.64	8" CAP & BUTTRISS	

SEWER HOUSE CONNECTION AS-BUILT LOCATION TABLE				WATER HOUSE CONNECTION AS-BUILT LOCATION TABLE			
LOT NUMBER	ADDRESS	LOCATION DIMENSION 1	LOCATION DIMENSION 2	LOT NUMBER	ADDRESS	LOCATION DIMENSION 1	LOCATION DIMENSION 2
LOT 1		SMH 126	32.0' I-2 41.0'	LOT 1		SMH 126	35' I-2 52.4'
LOT 2		I-2	45.5' F.H. 31.5'	LOT 2		I-2	32' F.H. 43.8'
LOT 3		FH	27.2' FHV 32.3'	LOT 3		F.H.	32.3' FHV 35.5'
LOT 4		I-3	21.0' SMH 125 31.0'	LOT 4		I-3	20.4' SMH 125 31.0'
LOT 5		I-4	73.5' SMH 122 27.6'	LOT 5		I-4	62.3' SMH 122 30.0'
LOT 6		I-10	25.4' SMH 120 92.2'	LOT 6		I-10	128.4' SMH 120 120.0'
LOT 7		FH	23.4' SMH 123 35.5'	LOT 7		FH	33.6' SMH 123 30.5'
LOT 8		SMH 123	30.7' SMH 124 68.5'	LOT 8		SMH 123	26.6' SMH 124 79.9'
LOT 9		SMH 123	109.6' SMH 124 51.0'	LOT 9		SMH 123	98.5' SMH 124 56.6'
LOT 10		SMH 124	44' SMH 123 122.0'	LOT 10		SMH 124	46.4' SMH 123 121.0'
LOT 11		SMH 124	40.0' SMH 123 116.0'	LOT 11		SMH 124	42.0' SMH 123 116.0'
LOT 12		SMH 123	87.5' SMH 124 41.5'	LOT 12		SMH 123	81.2' SMH 124 48.0'
LOT 13		SMH 123	45.5' F.H. 42.0'	LOT 13		SMH 123	35.5' F.H. 41.9'
LOT 14		SMH 119	62.0' SMH #118 87.6'	LOT 14		SMH 119	52.8' SMH 118 95.4'
LOT 15		SMH 120	20.2' SMH 121 70.5'	LOT 15		SMH 120	47.1' SMH 121 37.2'
LOT 16		SMH 120	86.8' SMH 121 13.0'	LOT 16		SMH 120	84.6' SMH 121 26.0'
LOT 17		I-10	140.5' SMH 120 107.0'	LOT 17		I-10	129.4' SMH 120 117.2'
LOT 18		SMH 117	68.0' SMH 116 86.0'	LOT 18		SMH 117	89.0' SMH 116 60.7'
LOT 19		SMH 116	28.0' I-8 41.0'	LOT 19		SMH 116	44.2' I-8 39.5'
LOT 20		SMH 118	138.2' SMH 119 22.2'	LOT 20		SMH 119	32.5' SMH 118 109.8'
LOT 21		SMH 118	39.8' FH 43.0'	LOT 21		SMH 118	29.8' F.H. 54.0'
LOT 22		FH	31.5' SMH 117 13.0'	LOT 22		F.H.	39.4' SMH 117 13.0'
LOT 23		SMH 116	54.0' I-8 69.0'	LOT 23		SMH 116	40.7' I-8 55.2'
LOT 24		SMH 116	23.6' I-8 16.0'	LOT 24		SMH 116	33.0' I-8 14.0'
LOT 25		SMH 115	71.6' M-9 61.0'	LOT 25		SMH 115	62.7' M-9 55.0'
LOT 26		SMH 115	14.6' M-9 42.0'	LOT 26		SMH 115	19.6' M-9 46.6'
LOT 27		I-16	18.0' I-15 59.7'	LOT 27		I-16	39.0' I-15 53.2'
LOT 28		I-16	12.6' I-15 42.3'	LOT 28		I-16	11.2' I-15 37.3'
LOT 29		I-12	14.7' I-11 43.0'	LOT 29		I-12	21.0' I-11 46.5'
LOT 30		I-12	65.3' M-1 21.8'	LOT 30		I-12	76.8' M-1 31.5'
LOT 31		SMH 127	49.0' M-1 94.7'	LOT 31		SMH 127	40.1' M-1 104.2'
LOT 32		SMH 127	37.0' I-17 95.0'	LOT 32		SMH 127	45.2' I-17 84.8'
LOT 33		I-17	41.8' I-18 22.0'	LOT 33		I-17	38.2' I-18 13.4'
LOT 34		I-18	49.0' I-17 65.0'	LOT 34		I-18	66.3' I-17 83.0'
LOT 35		SMH 128	50.0' F.H. 99.0'	LOT 35		SMH 128	54.5' F.H. 82.5'
LOT 36		SMH 128	37.0' F.H. 112.0'	LOT 36		SMH 128	39.8' F.H. 107.8'
LOT 37		SMH 128	37.2' FH 115.0'	LOT 37		SMH 128	39.5' F.H. 112.4'
LOT 38		SMH 128	51.0' FH 97.5'	LOT 38		SMH 128	54.3' F.H. 90.3'
LOT 39		I-18	35.6' I-17 11.4'	LOT 39		I-18	41.6' I-17 22.6'
LOT 40		I-17	50.0' I-18 61.3'	LOT 40		I-17	40.3' I-18 54.2'
LOT 41		SMH 127	20.9' I-17 114.0'	LOT 41		SMH 127	45.2' I-17 84.8'
LOT 42		SMH 127	82.8' M-1 61.8'	LOT 42		M-1	73.3' SMH 127 73.3'
LOT 43		I-11	32.2' I-12 45.0'	LOT 43		I-11	42.5' I-12 48.4'
LOT 44		I-11	36.2' I-12 5				

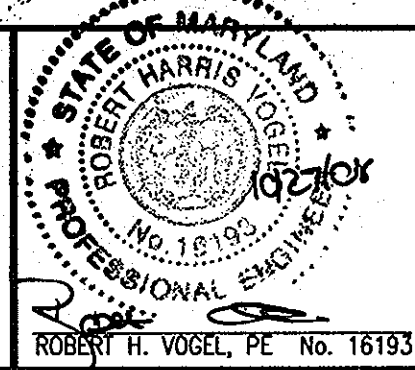


**PROFILE**  
SCALE: 1" = 50' HORIZ.  
1" = 5' VERT.

AS BUILT

**OWNER/DEVELOPER**  
CLAREMONT L.L.C.  
11046 DORSCH FARM ROAD  
ELLICOTT CITY, MD 21042  
(410) 730-4556

PROFESSIONAL CERTIFICATION  
I HEREBY CERTIFY THAT THESE DOCUMENTS WERE  
PREPARED OR APPROVED BY ME, AND THAT I  
AM A FULLY LICENSED PROFESSIONAL ENGINEER  
UNDER THE LAWS OF THE STATE OF MARYLAND.  
EXPIRES 06/30/2010



**ROBERT H. VOGEL**  
**ENGINEERING, INC.**  
ENGINEERS • SURVEYORS • PLANNERS  
8407 MAIN STREET TEL: 410.461.2666  
ELLICOTT CITY, MD 21043 FAX: 410.461.8961

DES:	RJ				
DRN:	RJ				
CHK:	RHV				
DATE:	OCTOBER 2008	BY:	K.C.J.	NO.:	1
				AS BUILT	
REVISION		DATE	10/17/13		

**FINAL WATER AND SEWER PROFILE**

**CLAREMONT OVERLOOK**  
CONTRACT NO. 14-4556-D

SCALE AS SHOWN

DEPARTMENT OF PUBLIC WORKS  
HOWARD COUNTY, MARYLAND

*Stalin C. Lee* 12/10/08  
CHIEF, BUREAU OF UTILITIES DATE

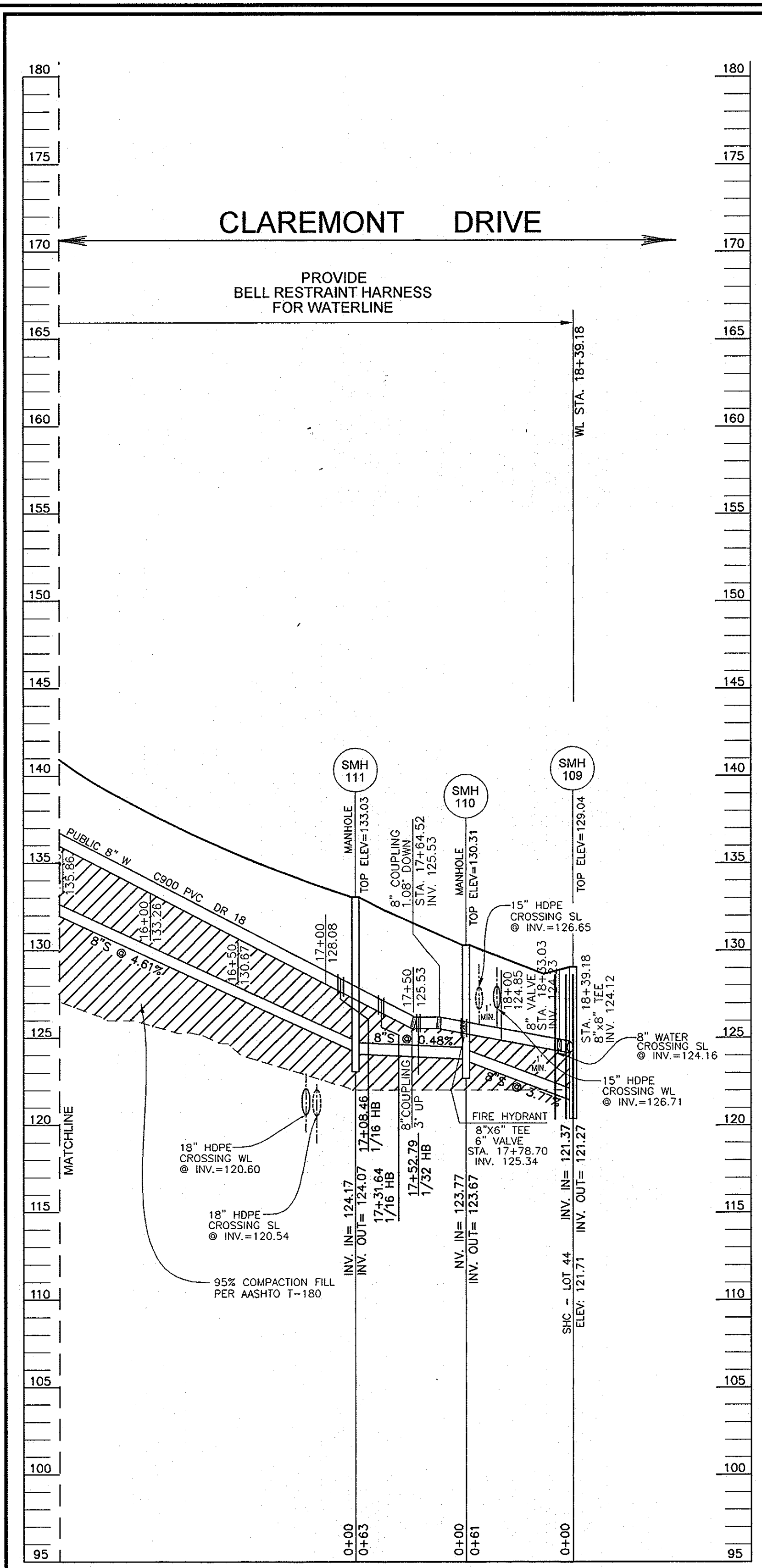
DEPARTMENT OF PLANNING & ZONING  
HOWARD COUNTY, MARYLAND

*[Signature]* 12/10/08  
CHIEF, DEVELOPMENT ENGINEERING DIVISION DATE

REF: F-08-63  
TAX MAP 32, BLOCK 21  
3RD ELECTION DISTRICT

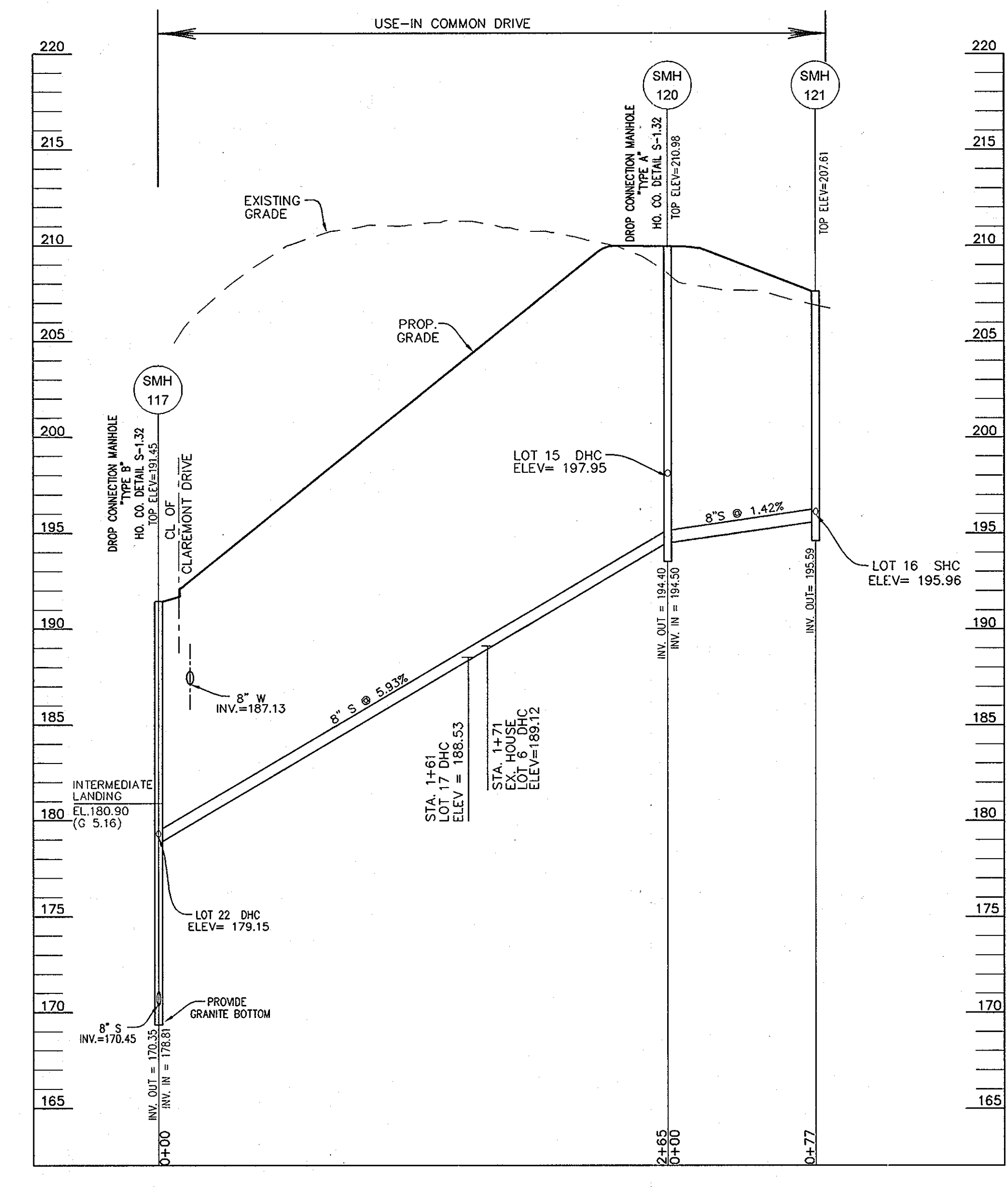
PARCEL 632 AND P/O 24  
HOWARD COUNTY, MARYLAND

SHEET 6 OF 9

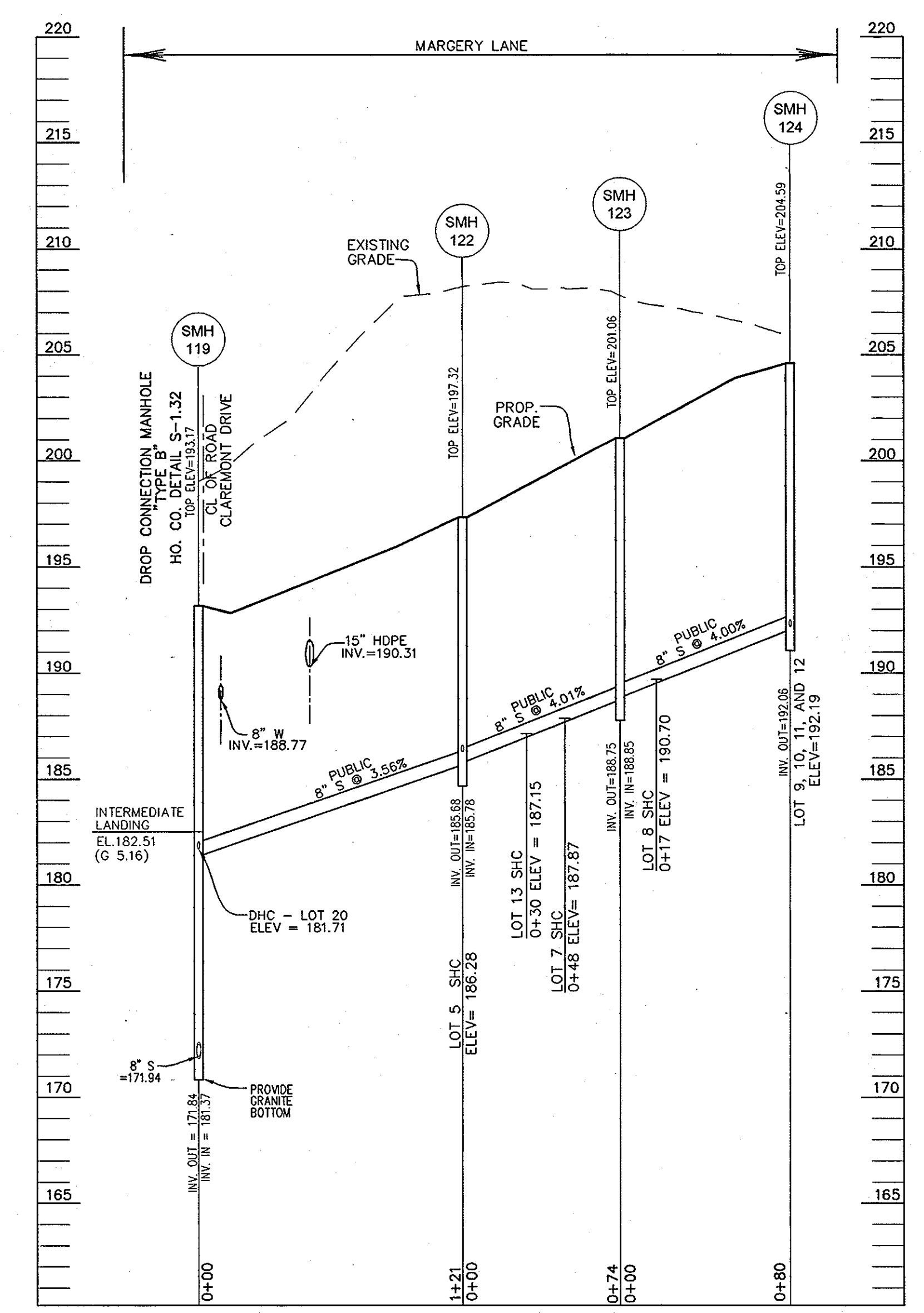


**PROFILE**  
SCALE: 1"=50' HORIZ.  
1"=5' VERT.

**OWNER/DEVELOPER**  
CLAREMONT L.L.C.  
11046 DORSCH FARM ROAD  
ELLCOTT CITY, MD 21042  
(410) 730-4556



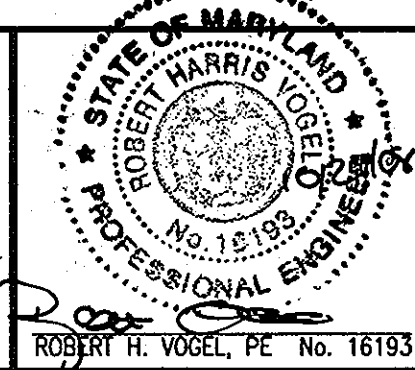
**PROFILE**  
SCALE: 1"=50' HORIZ.  
1"=5' VERT.



**PROFILE**  
SCALE: 1"=50' HORIZ.  
1"=5' VERT.

PROFESSIONAL CERTIFICATION  
I HEREBY CERTIFY THAT THESE DOCUMENTS WERE  
PREPARED OR APPROVED BY ME, AND THAT  
I AM A FULLY LICENSED PROFESSIONAL ENGINEER  
UNDER THE LAWS OF THE STATE OF MARYLAND,  
LICENSE NO. 16193  
EXPIRATION DATE: SEPTEMBER 27, 2010

**ROBERT H. VOGEL**  
**ENGINEERING, INC.**  
ENGINEERS • SURVEYORS • PLANNERS  
8407 MAIN STREET TEL: 410.461.7666  
ELLCOTT CITY, MD 21043 FAX: 410.461.8961

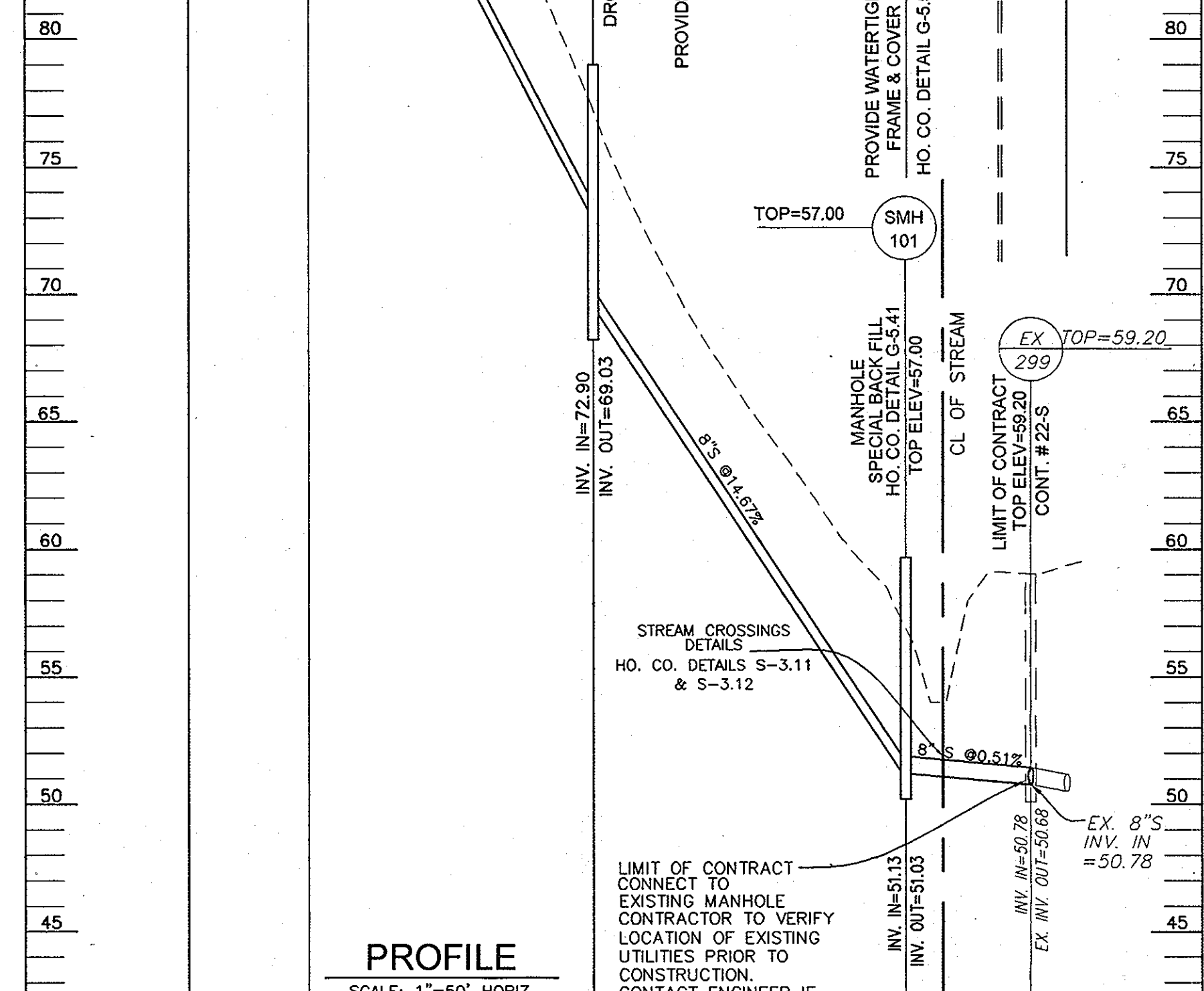
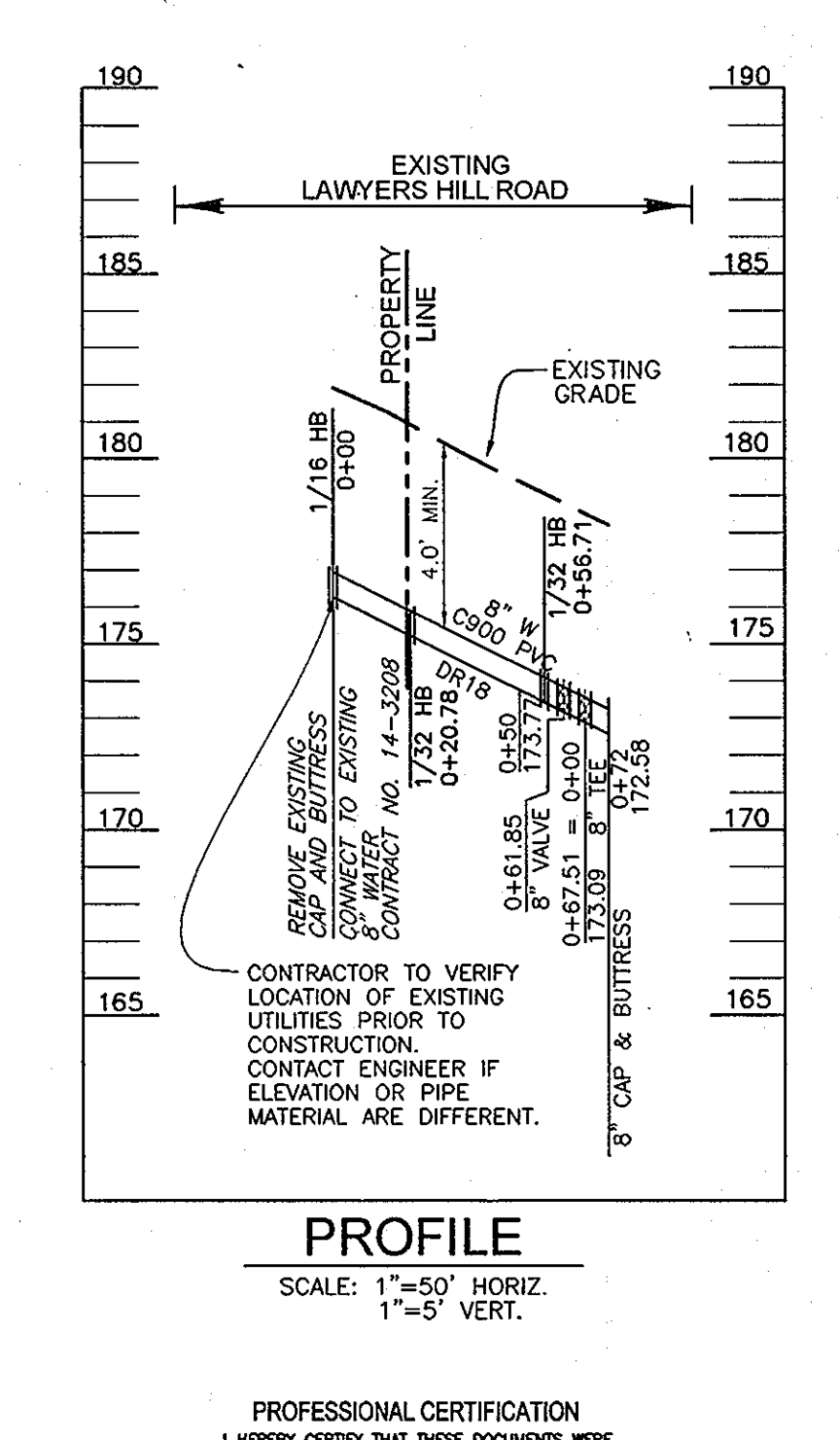
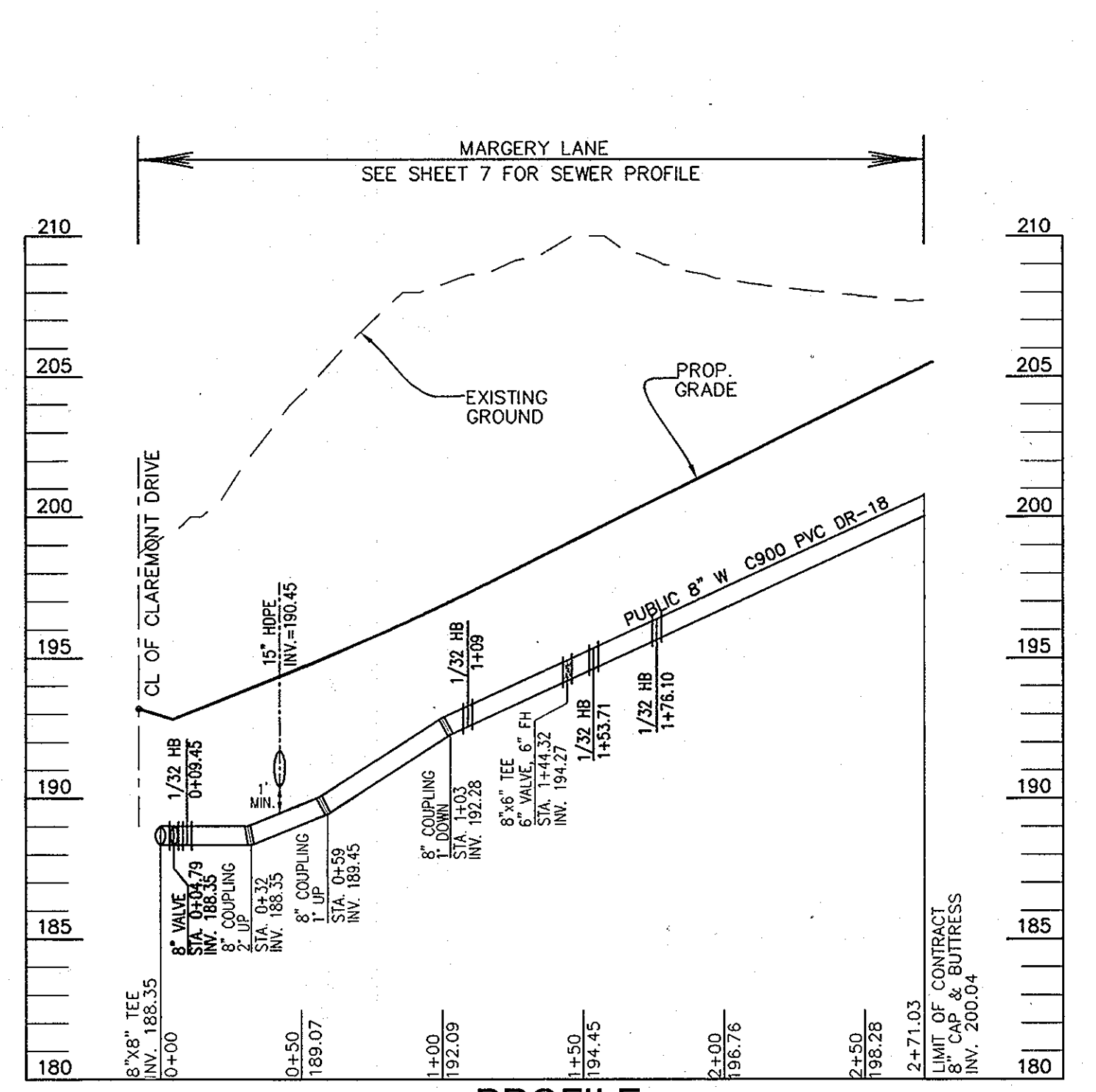
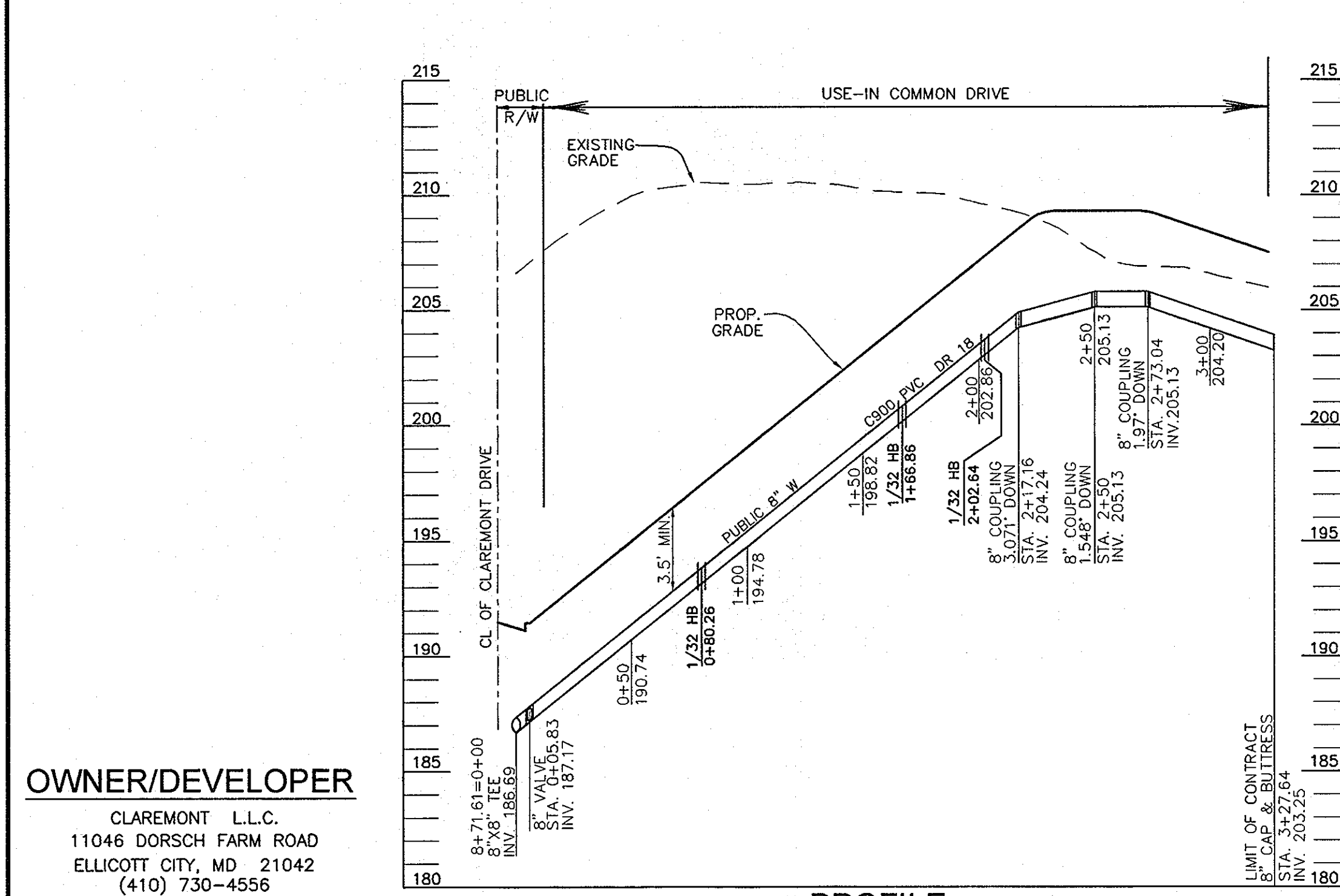
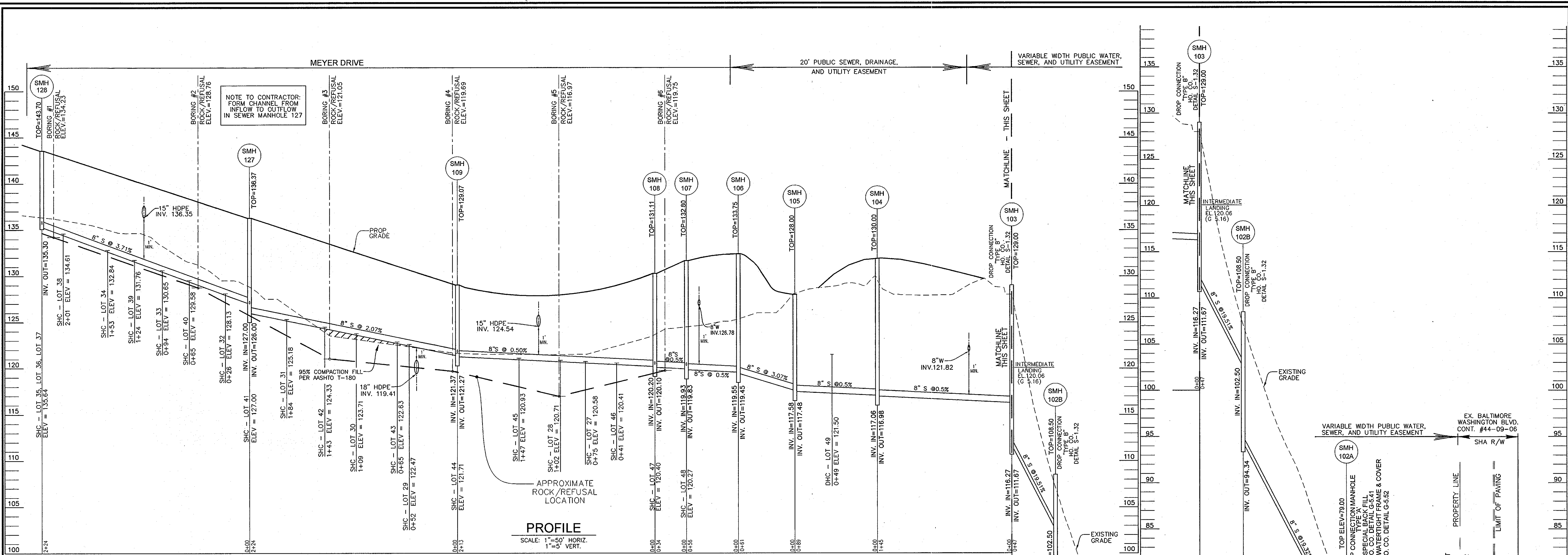


DES:	RJ				
DRN:	RJ				
CHK:	RHV				
DATE:	OCTOBER 2008	BY	NO.	REVISION	DATE

**FINAL WATER AND SEWER PROFILE**  
600' SCALE MAP NO. 32 BLOCK NO. 21

**CLAREMONT OVERLOOK**  
CONTRACT NO. 14-4556-D  
REF: F-08-63  
TAX MAP 32, BLOCK 21  
3RD ELECTION DISTRICT  
PARCEL 632 AND P/O 24  
HOWARD COUNTY, MARYLAND

SCALE AS SHOWN  
SHEET 7 OF 9

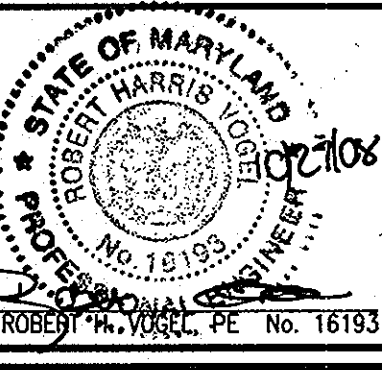


**OWNER/DEVELOPER**  
 CLAREMONT L.L.C.  
 11046 DORSCH FARM ROAD  
 ELLICOTT CITY, MD 21042  
 (410) 730-4556

DEPARTMENT OF PUBLIC WORKS  
 HOWARD COUNTY, MARYLAND

DEPARTMENT OF PLANNING & ZONING  
 HOWARD COUNTY, MARYLAND

**ROBERT H. VOGEL**  
**ENGINEERING, INC.**  
 ENGINEERS • SURVEYORS • PLANNERS  
 8407 MAIN STREET TEL: 410.461.7666  
 ELLICOTT CITY, MD 21043 FAX: 410.461.8961

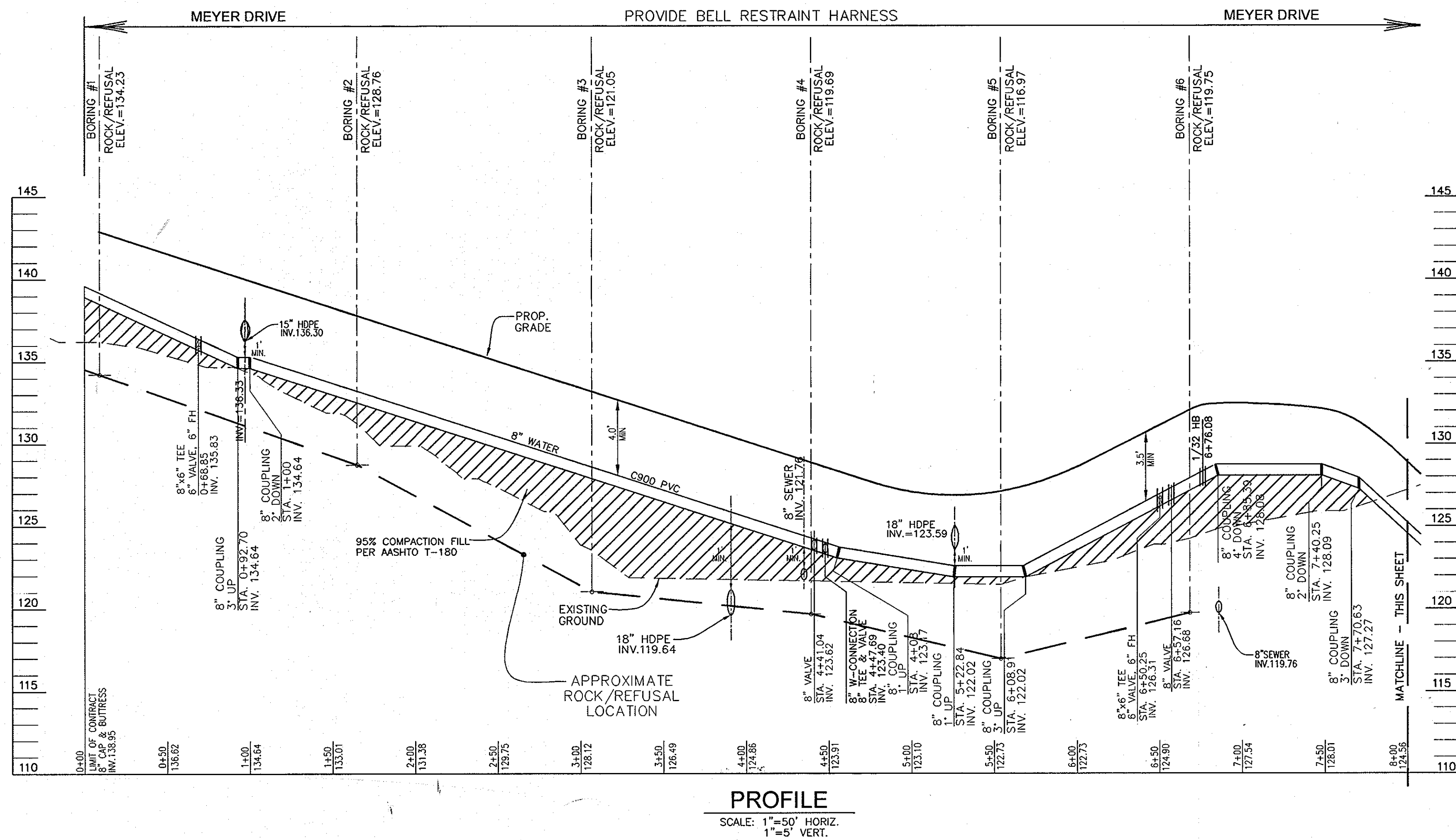


DES:	RJ				
DRN:	RJ				
CHK:	RHV				
DATE:	OCTOBER 2008	BY:	NO.	REVISION	DATE

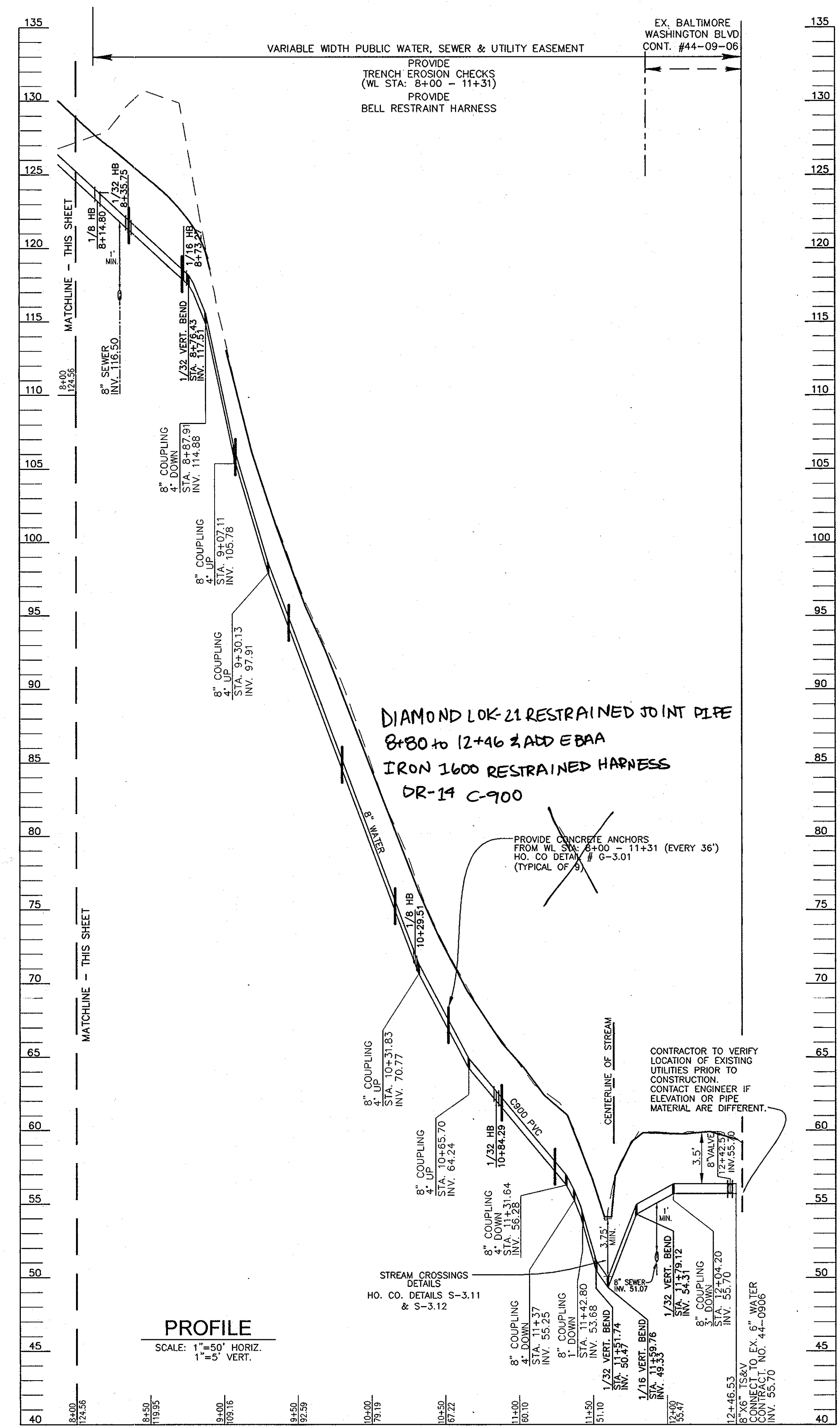
**FINAL WATER AND SEWER PROFILE**  
 600' SCALE MAP NO. 32 BLOCK NO. 21

**CLAREMONT OVERLOOK**  
**CONTRACT NO. 14-4556-D**  
 REF: F-08-63  
 TAX MAP 32, BLOCK 21  
 3RD ELECTION DISTRICT  
 PARCEL 632 AND P/O 24  
 HOWARD COUNTY, MARYLAND  
 SCALE AS SHOWN  
 SHEET 8 OF 9





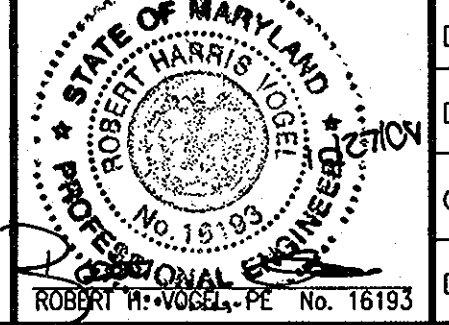
**PROFILE**  
SCALE: 1"=50' HORIZ.  
1"=5' VERT.



**PROFILE**  
SCALE: 1"=50' HORIZ.  
1"=5' VERT.

PROFESSIONAL CERTIFICATION  
I HEREBY CERTIFY THAT THESE DOCUMENTS WERE  
PREPARED OR APPROVED BY ME AND THAT I  
AM A DULY LICENSED PROFESSIONAL ENGINEER  
UNDER THE LAWS OF THE STATE OF MARYLAND.  
LICENSE NO. 16193  
EXPIRES DATE: SEPTEMBER 27, 2010

**ROBERT H. VOGEL**  
ENGINEERING, INC.  
ENGINEERS • SURVEYORS • PLANNERS  
8407 MAIN STREET TEL: 410.461.2666  
ELLCOTT CITY, MD 21043 FAX: 410.461.8961



DES:	RJ				
DRN:	RJ				
CHK:	RHV				
DATE:	OCTOBER 2008	K.C.I. 1	AS BUILT	10/11/08	
BY:	NO.			REVISION	DATE

**FINAL WATER AND SEWER PROFILE**  
600' SCALE MAP NO. 32 BLOCK NO. 21

**CLAREMONT OVERLOOK**  
CONTRACT NO. 14-4556-D  
SCALE AS SHOWN  
SHEET 9 OF 9  
PARCEL 632 AND P/O 24 HOWARD COUNTY, MARYLAND

DEPARTMENT OF PUBLIC WORKS  
HOWARD COUNTY, MARYLAND  
CHIEF, BUREAU OF UTILITIES  
DATE: 10/1/08

DEPARTMENT OF PLANNING & ZONING  
HOWARD COUNTY, MARYLAND  
CHIEF, DEVELOPMENT ENGINEERING DIVISION  
DATE: 10/1/08

**OWNER/DEVELOPER**  
CLAREMONT L.L.C.  
11046 DORSCH FARM ROAD  
ELLCOTT CITY, MD 21042  
(410) 730-4556