

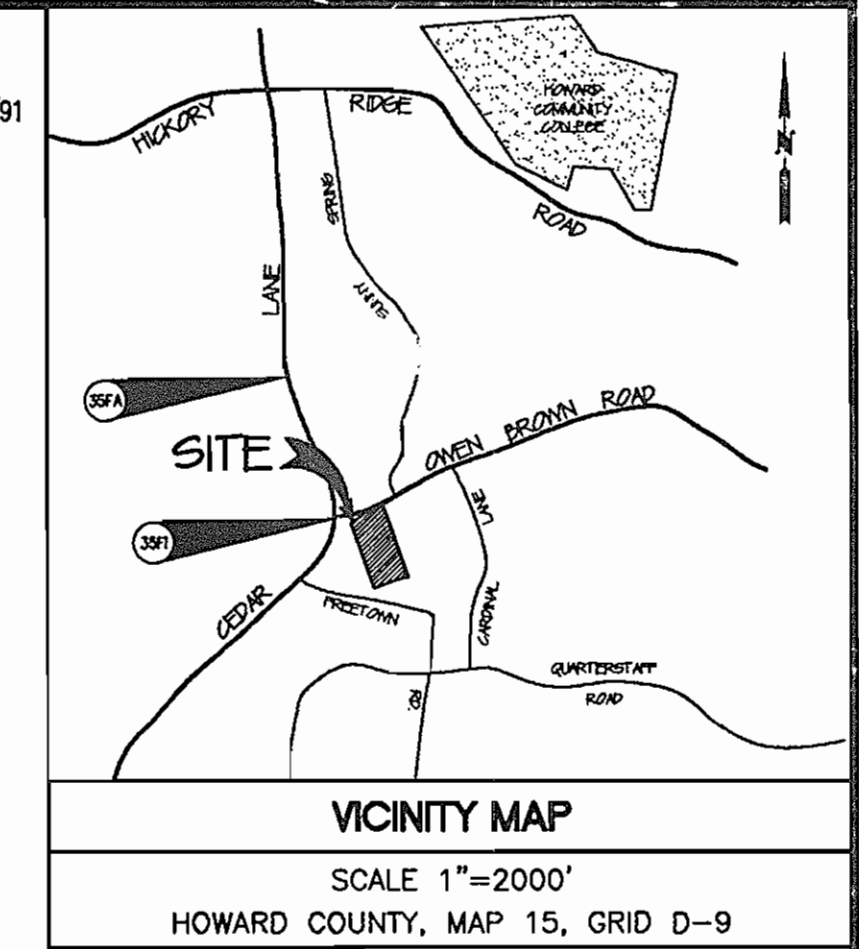
**SHEET INDEX**

NO.	TITLE
1	COVER SHEET
2	PLAN & PROFILES OF WATER & SEWER EXTENSIONS

# WATER AND SEWER EXTENSIONS ABIDING SAVIOR LUTHERAN CHURCH PENTECOSTAL CHURCH OF GOD 5th ELECTION DISTRICT HOWARD COUNTY, MARYLAND CONTRACT NO. 24-4552-D

**BENCHMARKS**

Horizontal Datum: Maryland State Coordinates, NAD 83/91  
Vertical Datum: NAVD 88  
Howard County Monument 35FA  
N559266.11, E1344682.69, Elev. 410.40  
Howard County Monument 35F1  
N557787.36, E1345217.36, Elev. 400.40

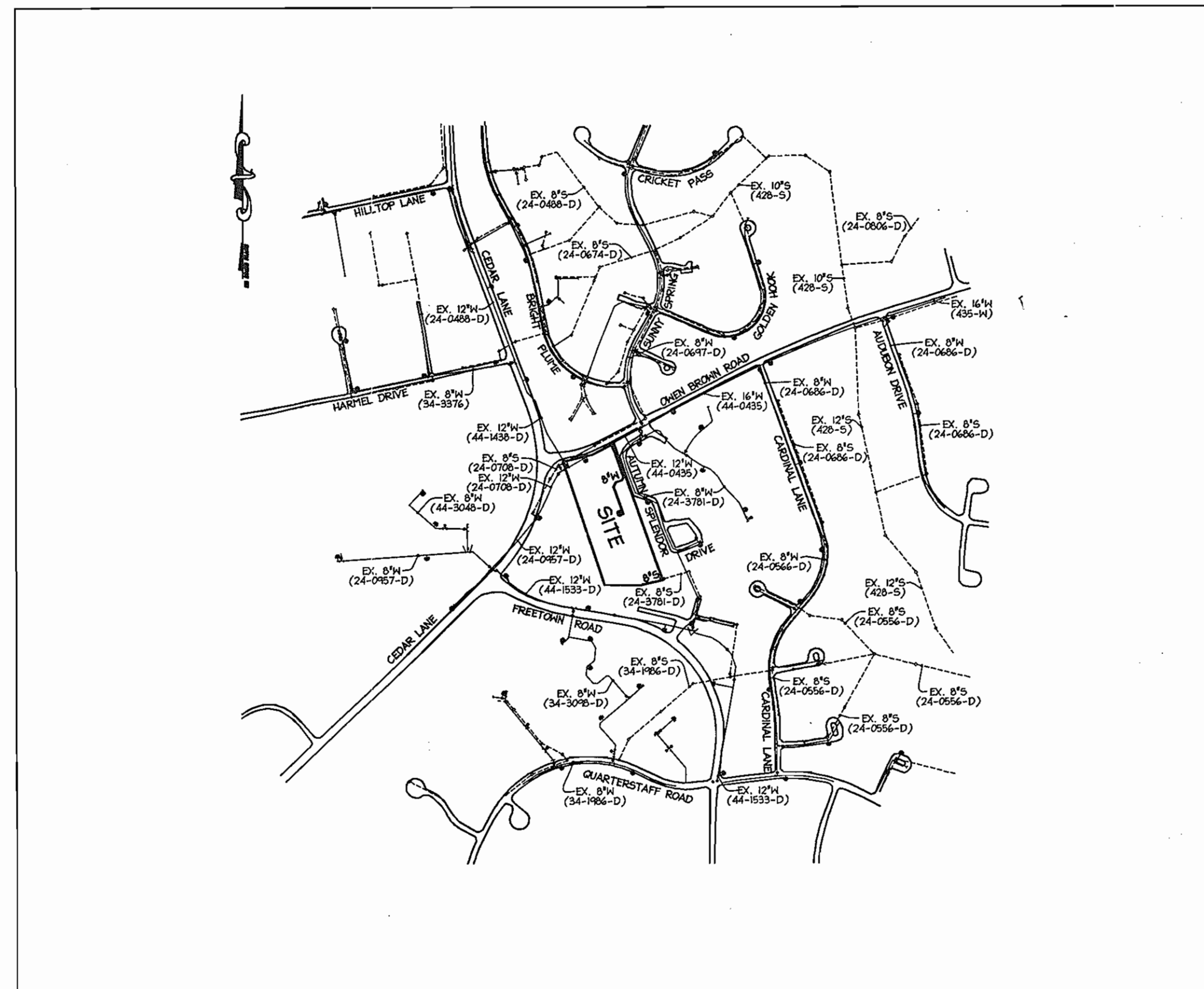


**QUANTITIES**

ITEMS	QUANTITIES ESTIMATED	AS-BUILT		MANUFACTURER/SUPPLIER
		QUANTITIES	TYPE	
8" WATER	436 LF			
6" WATER	17 LF			
12"x8" T.S.&V.	1 EA			
8" VALVE	1 EA			
6" VALVE	1 EA			
8" CAP	1 EA			
8" 1/8 HB	4 EA			
8"x6" FHT	1 EA			
FIRE HYDRANT - 5.5'	1 EA			
6" SEWER	10 LF			
8" SEWER	10 LF			
MANHOLES	1 EA			

CHECKBOX
AS-BUILT DATE
SURVEY AND DRAFTING DIVISION

SMH NO.	VERTICAL FEET
1	10.77



**LOCATION MAP**  
SCALE: 1"=600'

TYPE OF BUILDING	INSTITUTIONAL
NO. OF LOTS/PARCELS/UNITS	3
NUMBER OF WATER HOUSE CONNECTIONS	1
NUMBER OF SEWER HOUSE CONNECTIONS	1
AREA OF COMMERCIAL LOT/PARCEL	6.80 AC.
SEWER SHED:	LITTLE PATUXENT
PUMPING STATION:	-

**DEVELOPER**

PENTECOSTAL CHURCH OF GOD  
INTERNATIONAL MOVEMENT IN SPANISH  
10699 OWEN BROWN ROAD  
COLUMBIA, MARYLAND 21044  
TEL. (410) 997-8770  
CONTACT: JOSE L. OCASIO

**GENERAL NOTES**

- PART I**
- APPROXIMATE LOCATION OF EXISTING MAINS ARE SHOWN. THE CONTRACTOR SHALL TAKE ALL NECESSARY PRECAUTIONS TO PROTECT EXISTING MAINS AND SERVICES AND MAINTAIN UNINTERRUPTED SERVICE. ANY DAMAGE INCURRED SHALL BE REPAIRED IMMEDIATELY TO THE SATISFACTION OF THE ENGINEER AT THE CONTRACTOR'S EXPENSE.
  - TOPOGRAPHIC FIELD SURVEYS WERE PERFORMED ON NOVEMBER 2006 BY CHRISTOPHER CONSULTANTS, LTD.
  - THE COORDINATES SHOWN ON THE DRAWINGS ARE BASED ON MARYLAND STATE REFERENCE SYSTEM NAD '83/'91 AS PROJECTED BY HOWARD COUNTY GEODETIC CONTROL STATIONS NO. 35F1 & 35FA.
  - ALL VERTICAL CONTROLS ARE BASED ON NAVD'88.
  - ALL PIPE ELEVATIONS SHOWN ARE INVERT ELEVATIONS UNLESS OTHERWISE NOTED ON THE PLANS.
  - CLEAR ALL UTILITIES BY A MINIMUM OF 12". CLEAR ALL POLES BY 5'-0" MINIMUM OR TUNNEL AS REQUIRED UNLESS OTHERWISE NOTED. THE OWNER HAS CONTACTED THE UTILITY COMPANIES AND HAS MADE ARRANGEMENTS FOR BRACING OF POLES AS SHOWN ON THE DRAWINGS. IN THE EVENT THE CONTRACTOR'S WORK REQUIRES THE BRACING OF ADDITIONAL POLES, ANY COST INCURRED BY THE OWNER FOR THE BRACING OF ADDITIONAL POLES OR DAMAGES SHALL BE DEDUCTED FROM MONIES OWED THE CONTRACTOR. THE CONTRACTOR SHALL COORDINATE WITH THE UTILITY COMPANIES TO SCHEDULE THE BRACING OF THE POLES.
  - FOR DETAILS NOT SHOWN ON THE DRAWING, AND FOR MATERIALS AND CONSTRUCTION METHODS, USE HOWARD COUNTY DESIGN MANUAL, VOLUME IV, STANDARD SPECIFICATIONS AND DETAILS FOR CONSTRUCTION (LATEST EDITION). THE CONTRACTOR SHALL HAVE A COPY OF VOLUME IV ON THE JOB.
  - WHERE TEST PITS HAVE BEEN MADE ON EXISTING UTILITIES, THEY ARE NOTED BY THE SYMBOL AT THE LOCATIONS OF THE TEST PITS. A NOTE OR NOTES CONTAINING THE RESULTS OF THE TEST PIT OR PITS IS INCLUDED ON THE DRAWINGS. EXISTING UTILITIES IN THE VICINITY OF THE PROPOSED WORK FOR WHICH TEST PITS HAVE NOT BEEN DUG SHALL BE LOCATED BY THE CONTRACTOR TWO WEEKS IN ADVANCE OF CONSTRUCTION OPERATIONS AT HIS OWN EXPENSE.
  - THE CONTRACTOR SHALL NOTIFY THE FOLLOWING UTILITY COMPANIES OR AGENCIES AT LEAST FIVE WORKING DAYS BEFORE STARTING WORK SHOWN ON THESE PLANS:
 

AT&T	1-800-252-1133
BGE (CONSTRUCTION SERVICES)	410-850-4620
BGE (EMERGENCY)	410-885-1400
BUREAU OF UTILITIES	410-313-4900
COLONIAL PIPELINE CO.	410-795-1390
MISS UTILITY	1-800-257-7777
STATE HIGHWAY ADMINISTRATION	410-531-5533
VERIZON	1-800-743-0033/410-224-9210
  - TREES AND SHRUBS ARE TO BE PROTECTED FROM DAMAGE TO THE MAXIMUM EXTENT. TREES AND SHRUBS LOCATED WITHIN THE CONSTRUCTION STRIP ARE NOT TO BE REMOVED OR DAMAGED BY THE CONTRACTOR.
  - THE CONTRACTOR SHALL REMOVE TREES, STUMPS AND ROOTS ALONG LINE OF EXCAVATION. PAYMENT FOR SUCH REMOVAL SHALL BE INCLUDED IN THE UNIT PRICE BID FOR CONSTRUCTION OF THE MAIN.
  - THE CONTRACTOR SHALL NOTIFY THE BUREAU OF HIGHWAYS, HOWARD COUNTY AT (410) 313-7450 AT LEAST FIVE WORKING DAYS BEFORE OPEN CUTTING OR BORING/JACKING OF ANY COUNTY ROAD FOR LAYING WATER/SEWER MAINS OR HOUSE CONNECTIONS. THE APPROVAL OF THESE DRAWINGS WILL CONSTITUTE COMPLIANCE WITH DPW REQUIREMENTS PER SECTION 18.114 (g) OF THE HOWARD COUNTY CODE.
- PART II - WATER**
- ALL WATER MAINS SHALL BE D.I.P. CLASS 54 UNLESS OTHERWISE NOTED.
  - TOPS OF ALL WATER MAINS SHALL HAVE A MINIMUM OF 3'-6" COVER UNLESS OTHERWISE NOTED.
  - VALVES ADJACENT TO TEES SHALL BE STRAPPED TO TEES.
  - ALL FITTINGS SHALL BE BUTTRESSED OR ANCHORED WITH CONCRETE IN ACCORDANCE WITH THE STANDARD DETAILS UNLESS OTHERWISE PROVIDED FOR ON THE DRAWINGS.
  - FIRE HYDRANTS SHALL BE SET TO THE BURY LINE ELEVATIONS SHOWN ON THE DRAWINGS. ALL FIRE HYDRANTS SHALL BE RESTRAINED AND BUTTRESSED WITH CONCRETE IN ACCORDANCE WITH THE STANDARD DETAILS. THE SOIL AROUND THE FIRE HYDRANT SHALL BE COMPACTED IN ACCORDANCE WITH SECTION 1000 AND 1005 OF THE STANDARD SPECIFICATIONS.
  - THE CONTRACTOR SHALL NOT OPERATE ANY WATER MAIN VALVES ON THE EXISTING WATER SYSTEM.
  - ALL WATER HOUSE CONNECTION SHALL BE FOR INSIDE METER SETTING UNLESS OTHERWISE NOTED ON PLANS OR IN SPECIFICATIONS.
  - FOR SPRINKLER SYSTEM FOR ALL TOWN HOMES OR MULTI-FAMILY DWELLING UNITS SHOULD HAVE A MINIMUM OF 1' CONNECTION WITH A 3/4" METER.
- PART III - SEWER**
- ALL SEWER MAINS SHALL BE D.I.P. OR P.V.C. UNLESS OTHERWISE NOTED.
  - ALL MANHOLES SHALL BE 4'-0" INSIDE DIAMETER UNLESS OTHERWISE NOTED.
  - FORCE MAINS SHALL BE D.I.P. ONLY.
  - MANHOLES SHOWN WITH 12" AND 16" WALLS ARE FOR BRICK MANHOLES ONLY.
  - MANHOLES DESIGNATED W.T. IN PLAN AND PROFILE SHALL HAVE WATER TIGHT FRAME AND COVERS, STANDARD DETAIL G5.52. WHERE WATER TIGHT FRAME AND COVER IS USED, SET TOP OF FRAME 1'-6" ABOVE FINISHED GRADE UNLESS OTHERWISE NOTED ON THE DRAWINGS.
  - HOUSE(S) WITH THE SYMBOL "C.N.S." INDICATES THAT THE CELLAR CANNOT BE SERVED.

SEDIMENT CONTROL MEASURES FOR THIS CONTRACT WILL BE IMPLEMENTED IN ACCORDANCE WITH SECTION 219 OF THE SPECIFICATIONS AND AS SHOWN ON SDP-08-067

REVIEW FOR HOWARD SOIL CONSERVATION DISTRICT AND MEETS TECHNICAL REQUIREMENTS.

THIS PLAN IS APPROVED FOR SOIL EROSION AND SEDIMENT CONTROL BY THE HOWARD SOIL CONSERVATION DISTRICT

*John R. Roberts* 12/2/09  
HOWARD SOIL CONSERVATION DISTRICT DATE

DEPARTMENT OF PUBLIC WORKS  
HOWARD COUNTY, MARYLAND

DEPARTMENT OF PLANNING & ZONING  
HOWARD COUNTY, MARYLAND



I HEREBY CERTIFY THAT THESE DOCUMENTS WERE PREPARED OR APPROVED BY ME AND THAT I AM A DULY LICENSED PROFESSIONAL ENGINEER UNDER THE LAWS OF THE STATE OF MARYLAND.  
JOHN M. HOUSEHOLDER  
MD LICENSE NUMBER: 29907 EXPIRATION DATE: 12/27/2010



DES:	AJK			
DRN:	AJK			
CHK:	JMH			
DATE:	OCT. 2008	BY	NO.	REVISION

COVER SHEET

600 SCALE MAP NO. 35 BLOCK NO. 18

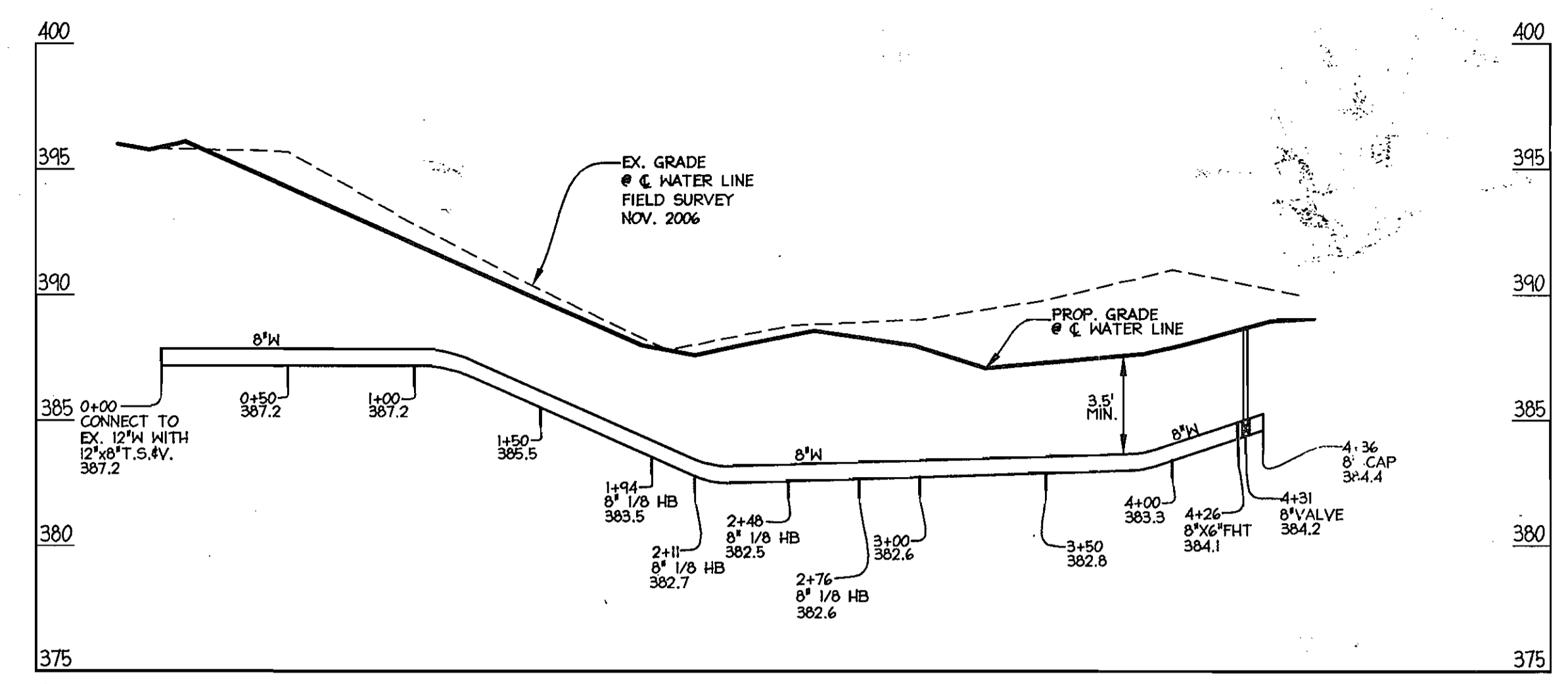
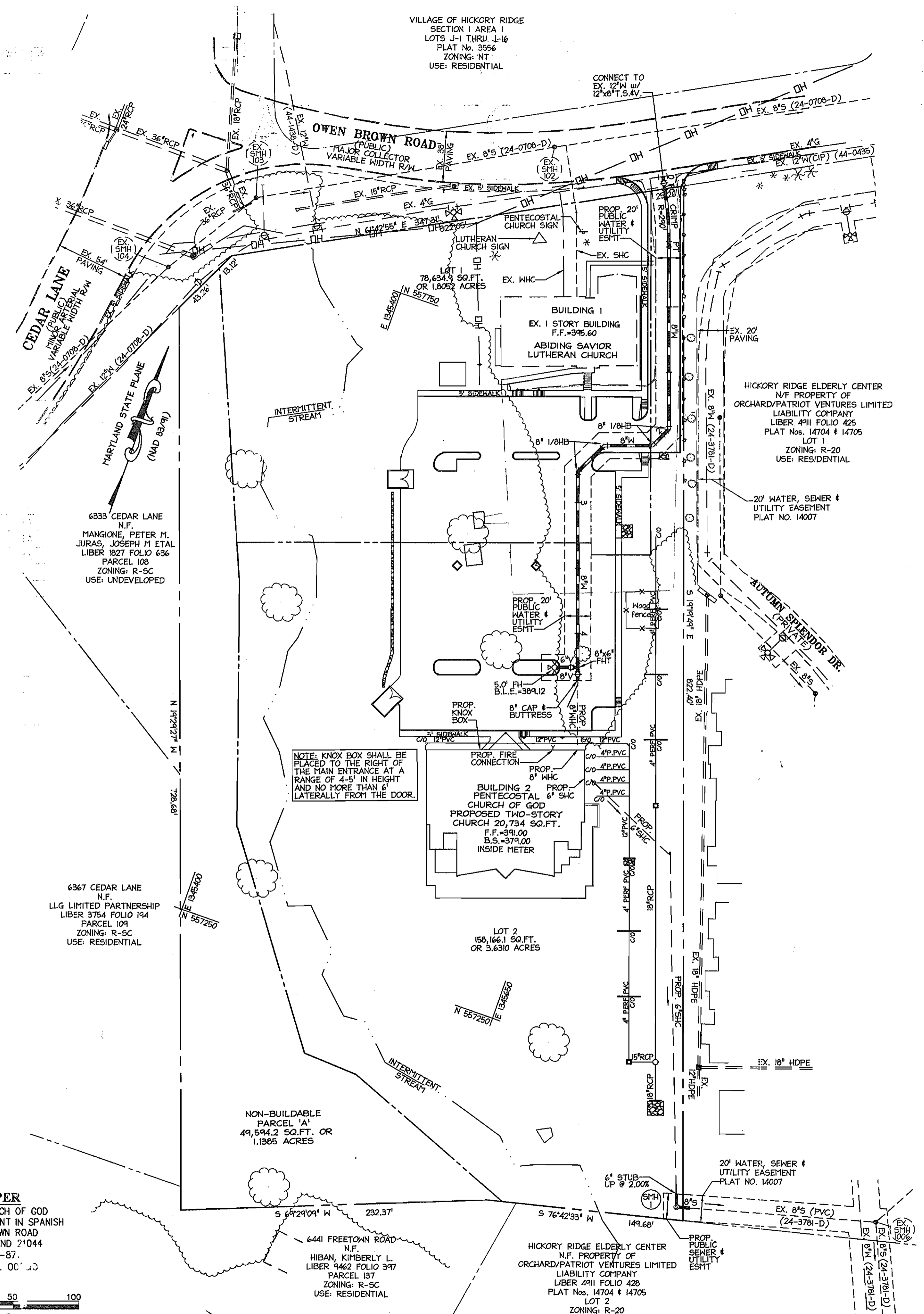
TAX MAP 35  
5th ELECTION DISTRICT

WATER AND SEWER EXTENSIONS  
A RESUBDIVISION OF PARCEL 207 & 238  
ABIDING SAVIOR LUTHERAN CHURCH &  
PENTECOSTAL CHURCH OF GOD  
LOTS 1, 2 AND 3  
CONTRACT NO. 24-4552-D

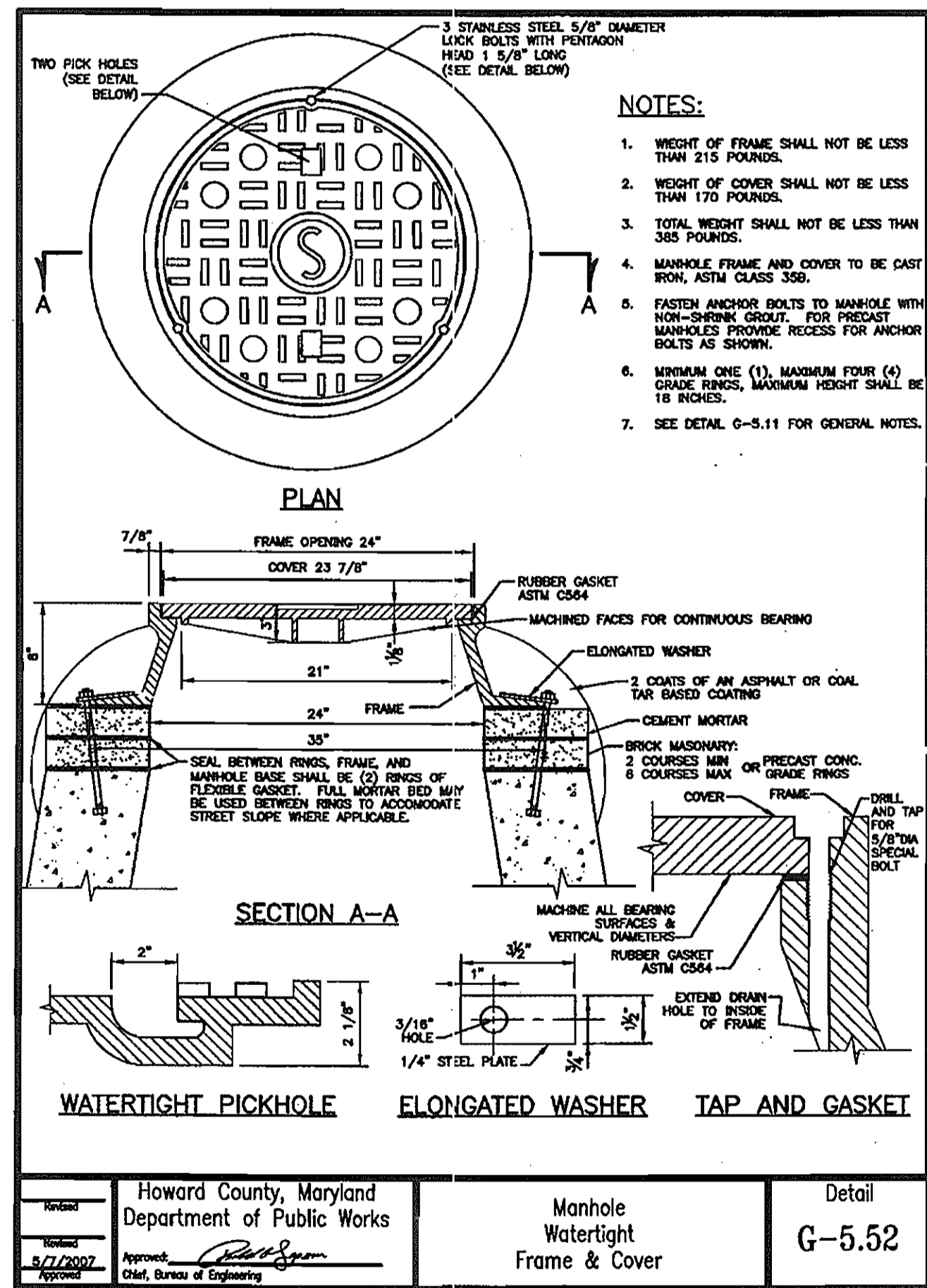
SCALE AS SHOWN  
SHEET 1 OF 2

MDC-801 (MS)

40 Years  
Before You Dig  
Call  
**"MISS UTILITY"**  
Service Protection Center  
CALL TOLL FREE  
1-800-257-7777

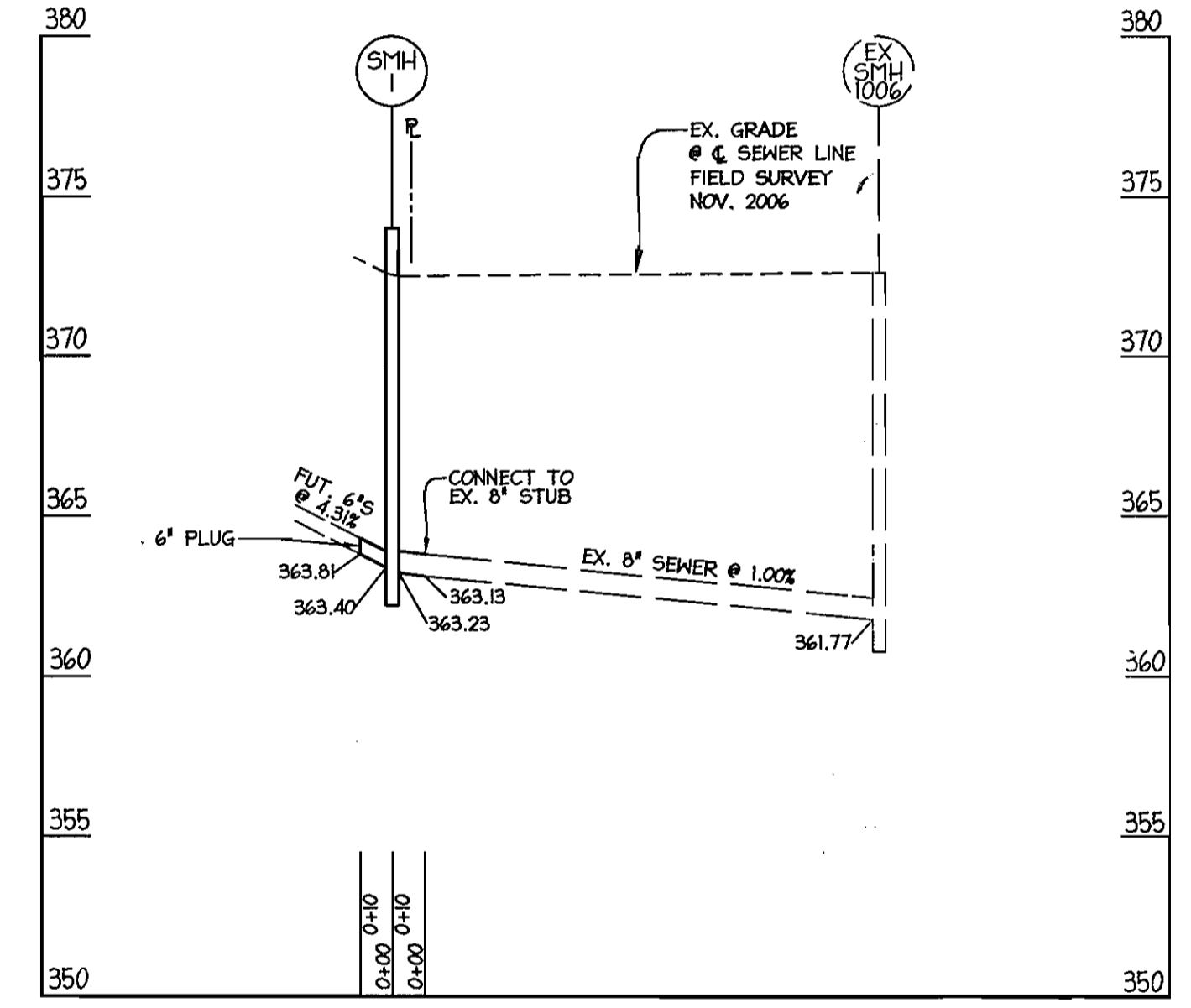


**WATER PROFILE**  
HORIZ: 1"=50'  
VERT: 1"=5'



**STRUCTURE SCHEDULE**

STRUCTURE	TYPE	NORTHING	EASTING	TOP	REMARKS
SMH 1	4'-0" DIA. MANHOLE	N 557,160.31	E 1,345,829.64	374.00 SLOPE=0.0%	HOCO STD MANHOLE - DETAIL G-5.12 (MANHOLE SHALL HAVE WATERTIGHT FRAME AND COVER PER DETAIL G-5.52)



**SEWER PROFILE**  
HORIZ: 1"=50'  
VERT: 1"=5'

**WATER LINE DATA**

LOCATION	FITTING	NAD 83/91 COORDINATES	
		NORTHING	EASTING
W.M. STA. 0+00	12"X8" TSV	N 557900.24	E 1345558.14
W.M. STA. 0+05	8" V	N 557895.62	E 1345560.68
W.M. STA. 1+94	8" 1/8" HB	N 557719.49	E 1345626.79
W.M. STA. 2+11	8" 1/8" HB	N 557703.70	E 1345619.20
W.M. STA. 2+48	8" 1/8" HB	N 557691.51	E 1345584.47
W.M. STA. 2+76	8" 1/8" HB	N 557666.02	E 1345572.22
W.M. STA. 4+26	8"X6" FHT	N 557524.52	E 1345621.86
W.M. STA. 4+29	8" V	N 557519.58	E 1345623.59
W.M. STA. 4+26	6" V	N 557522.79	E 1345616.92
W.M. STA. 4+26	5.0' FH	N 557518.74	E 1345605.38
W.M. STA. 4+36	8" CAP	N 557515.09	E 1345225.17

DEPARTMENT OF PUBLIC WORKS  
HOWARD COUNTY, MARYLAND

DEPARTMENT OF PLANNING & ZONING  
HOWARD COUNTY, MARYLAND

**christopher consultants**  
engineering - surveying - land planning  
1712 Columbia Gateway Drive Suite 100 Columbia, MD 21046-3900  
410.388.8800 FAX: 410.388.8803



DES: AJK					
DRN: AJK					
CHK: JMH					
DATE: OCT. 2008	BY: NO.	REVISION	DATE		

**PLAN OF WATER AND SEWER EXTENSIONS**

WATER and SEWER EXTENSIONS  
A RESUBDIVISION OF PARCEL 207 & 238  
ABIDING SAVIOR LUTHERAN CHURCH & PENTECOSTAL CHURCH OF GOD  
LOTS 1, 2, AND 3  
CONTRACT NO. 24-4552-D  
SCALE: 1"=50'  
SHEET: 2 OF 2  
TAX MAP 35  
5th ELECTION DISTRICT  
ZONE: R-SC  
HOWARD COUNTY, MARYLAND

MDC-801 (M&S)