

GENERAL NOTES

PART I

- APPROXIMATE LOCATIONS OF EXISTING MAINS ARE SHOWN. THE CONTRACTOR SHALL TAKE ALL NECESSARY PRECAUTIONS TO PROTECT EXISTING MAINS AND SERVICES AND MAINTAIN UNINTERRUPTED SERVICE. ANY DAMAGE INCURRED SHALL BE REPAIRED IMMEDIATELY TO THE SATISFACTION OF THE ENGINEER AT THE CONTRACTOR'S EXPENSE.
- TOPOGRAPHY FIELD SURVEYS WERE PERFORMED IN NOVEMBER, 2005, BY NJR & ASSOCIATES.
- THE COORDINATES SHOWN ON THE DRAWINGS ARE BASED ON MARYLAND STATE REFERENCE SYSTEM NAD '83/'91 AS PROJECTED BY HOWARD COUNTY GEODETIC CONTROL STATIONS 301B AND 316B.
- ALL VERTICAL CONTROLS ARE BASED ON NAVD' 88. VERTICAL CONTROLS PROVIDED ON DRAWINGS ARE:
 GEODETIC SURVEY CONTROL 480B (N 536575.741/E 1371005.807)
 BRASS DISC SET ON TOP OF A CONCRETE MONUMENT, LOCATED AT 6' EAST SIDE OF DORSEY RUN ROAD, BETWEEN ROUTE 175 AND 32, AND 20.5' WEST SIDE OF FENCE.
 GEODETIC SURVEY CONTROL 4806 (N 533541.902/E 1368856.922)
 BRASS DISC SET ON TOP OF A CONCRETE MONUMENT, LOCATED AT AREA BETWEEN ROUTE 32 WEST AND 32 EAST, 175' WEST SIDE OF LAUREL ELK RIDGE 1/2 MILE SIGN, LOCATED IN 32 WEST, AND 88.3' NORTH OF GUARDRAIL AT 32 EAST.
- ALL PIPE ELEVATIONS SHOWN ARE INVERT ELEVATIONS UNLESS OTHERWISE NOTED.
- CLEAR ALL UTILITIES BY A MINIMUM OF 12 INCHES. CLEAR ALL POLES BY 5'-0" MINIMUM OR TUNNEL AS REQUIRED UNLESS OTHERWISE NOTED. THE OWNER HAS CONTACTED THE UTILITY COMPANIES AND HAS MADE ARRANGEMENTS FOR BRACING OF POLES AS SHOWN ON DRAWINGS. IN THE EVENT THE CONTRACTOR'S WORK REQUIRES THE BRACING OF ADDITIONAL POLES, ANY COST INCURRED BY THE OWNER FOR BRACING OF ADDITIONAL POLES OR DAMAGES SHALL BE DEDUCTED FROM MONIES OWED THE CONTRACTOR. THE CONTRACTOR SHALL COORDINATE WITH THE UTILITY COMPANIES TO SCHEDULE THE BRACING OF THE POLES.
- FOR DETAILS NOT SHOWN ON THE DRAWINGS, AND FOR MATERIALS AND CONSTRUCTION METHODS USE, HOWARD COUNTY DESIGN MANUAL, VOLUME IV, STANDARD SPECIFICATIONS AND DETAILS FOR CONSTRUCTION (LATEST EDITION). THE CONTRACTOR SHALL HAVE A COPY OF VOLUME IV ON THE JOB.
- WHERE TEST PITS HAVE BEEN MADE ON EXISTING UTILITIES, THEY ARE NOTED BY THE SYMBOL AT THE LOCATION OF THE TEST PIT. A NOTE OR NOTES CONTAINING THE RESULTS OF THE TEST PIT OR PITS IS INCLUDED ON THE DRAWINGS. EXISTING UTILITIES IN THE VICINITY OF THE PROPOSED WORK FOR WHICH TEST PITS HAVE NOT BEEN DUG SHALL BE LOCATED BY THE CONTRACTOR TWO WEEKS IN ADVANCE OF CONSTRUCTION OPERATION AT HIS OWN EXPENSE.
- THE CONTRACTOR SHALL NOTIFY THE FOLLOWING UTILITY COMPANIES OR AGENCIES AT LEAST FIVE WORKING DAYS BEFORE STARTING WORK SHOWN THESE PLANS:
 AT &T _____ 1-800-252-1133
 BGE (CONTRACTOR SERVICE) _____ 410-850-4620
 BGE (EMERGENCY) _____ 410-685-1400
 BUREAU OF UTILITIES _____ 410-313-4900
 COLONIAL PIPELINE CO _____ 410-795-1390
 MISS UTILITY _____ 1-800-257-7777
 STATE HIGHWAY ADMINISTRATION _____ 410-531-5533
 VERIZON _____ 1-800-743-0033/410-224-9210
- TREES AND SHRUBS ARE TO BE PROTECTED FROM DAMAGE TO THE MAXIMUM EXTENT. TREES AND SHRUBS LOCATED WITHIN THE CONSTRUCTION STRIP ARE NOT TO BE REMOVED OR DAMAGED BY THE CONTRACTOR.
- THE CONTRACTOR SHALL REMOVE TREES, STUMPS AND ROOTS ALONG THE LINE OF EXCAVATION. PAYMENT FOR SUCH REMOVAL SHALL BE INCLUDED IN THE UNIT PRICE BID FOR THE CONSTRUCTION OF THE MAIN.
- THE CONTRACTOR SHALL NOTIFY THE BUREAU OF HIGHWAYS, HOWARD COUNTY, AT (410) 313-7450 AT LEAST FIVE WORKING DAYS BEFORE ANY OPEN CUTTING OR BORING/JACKING OF ANY COUNTY ROAD FOR LAYING WATER/SEWER MAINS OR HOUSE CONNECTIONS. THE APPROVAL OF THESE DRAWINGS WILL CONSTITUTE COMPLIANCE WITH DPW REQUIREMENTS PER SECTION 18.114(a) OF THE HOWARD COUNTY CODE.

PART II - WATER

- ALL WATER MAINS TO BE D.I.P. CLASS 54 UNLESS OTHERWISE NOTED.
- TOPS OF ALL WATER MAINS TO HAVE A MINIMUM OF 3'-6" COVER UNLESS OTHERWISE NOTED.
- VALVES ADJACENT TO TEES SHALL BE STRAPPED TO TEES.
- ALL FITTINGS SHALL BE BUTTRESSED OR ANCHORED WITH CONCRETE IN ACCORDANCE WITH THE STANDARD DETAILS UNLESS OTHERWISE PROVIDED FOR ON THE DRAWINGS.
- FIRE HYDRANTS SHALL BE SET TO THE BURY LINE ELEVATIONS SHOWN ON THE DRAWINGS. ALL FIRE HYDRANTS SHALL BE RESTRAINED AND BUTTRESSED WITH CONCRETE IN ACCORDANCE WITH THE STANDARD DETAIL. THE SOIL AROUND THE FIRE HYDRANT SHALL BE COMPACTED IN ACCORDANCE WITH SECTION 1000 AND 1005 OF THE STANDARD SPECIFICATIONS.
- THE CONTRACTOR SHALL NOT OPERATE ANY WATER MAIN VALVES ON THE EXISTING WATER SYSTEM.
- ALL WATER HOUSE CONNECTIONS SHALL BE FOR INSIDE METER SETTING UNLESS OTHERWISE NOTED ON THE PLANS OR IN SPECIFICATIONS.
- FOR SPRINKLER SYSTEM FOR ALL TOWN HOMES OR MULTI-FAMILY DWELLING UNITS SHOULD HAVE A MINIMUM OF 1" CONNECTION WITH A 3/4" METER.

PART III - SEWER

- ALL SEWER MAINS SHALL BE D.I.P. OR P.V.C UNLESS OTHERWISE NOTED.
- ALL MANHOLES SHALL BE 4'-0" INSIDE DIAMETER UNLESS OTHERWISE NOTED.
- FORCE MAINS SHALL BE D.I.P. ONLY.
- MANHOLES SHOWN WITH 12" AND 16" WALLS ARE FOR BRICK MANHOLES ONLY.
- MANHOLES DESIGNATED W.T. IN PLAN AND PROFILE SHALL HAVE WATERTIGHT FRAME AND COVERS, STANDARD DETAIL CS-52. WHERE WATERTIGHT FRAME AND COVER IS USED, SET TOP OF FRAME 1'-6" ABOVE FINISHED GRADE UNLESS OTHERWISE NOTED ON THE DRAWINGS.
- HOUSE(S) WITH THE SYMBOL "C.N.S." INDICATES THAT CELLAR CANNOT BE SERVED.

SEDIMENT CONTROL MEASURES WILL BE IMPLEMENTED IN ACCORDANCE WITH SECTION 219 OF THE SPECIFICATIONS AND WITH SITE DEVELOPMENT PLAN SDP-08-023.

THIS DEVELOPMENT IS APPROVED FOR SOIL EROSION AND SEDIMENT CONTROL BY THE HOWARD COUNTY SOIL CONSERVATION DISTRICT.

REVIEWED FOR HOWARD COUNTY SOIL CONSERVATION DISTRICT AND MEETS TECHNICAL REQUIREMENTS.

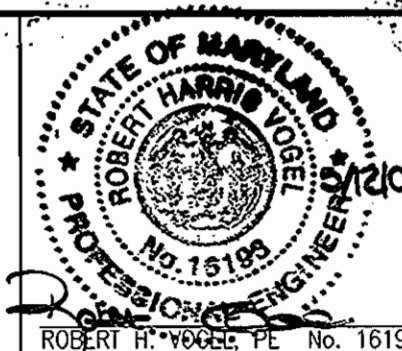
John K. Robertson 6/19/08
 SOIL CONSERVATION DISTRICT DATE

[Signature]
 U.S. SOIL CONSERVATION DISTRICT DATE

DEPARTMENT OF PUBLIC WORKS
 HOWARD COUNTY, MARYLAND

DEPARTMENT OF PLANNING & ZONING
 HOWARD COUNTY, MARYLAND

ROBERT H. VOGEL
ENGINEERING, INC.
 ENGINEERS • SURVEYORS • PLANNERS
 8407 MAIN STREET TEL: 410.461.7666
 ELLICOTT CITY, MD 21043 FAX: 410.461.8961



PROFESSIONAL CERTIFICATE
 I HEREBY CERTIFY THAT THESE DOCUMENTS WERE PREPARED OR APPROVED BY ME, AND THAT I AM A DULY LICENSED PROFESSIONAL ENGINEER UNDER THE LAWS OF THE STATE OF MARYLAND, LICENSE NO. 16153, EXPIRATION DATE: 09-27-2008.

DES: DZ
 DRN: DZ
 CHK: RHV
 DATE: MAY 9, 2008 NO. _____ REVISION _____ DATE _____

FINAL WATER AND SEWER PLAN
COVER SHEET

CORRIDOR ROAD LLC
LOT 3
FLEX SPACE
CONTRACT NO. 44-4544-D

SCALE AS SHOWN

SHEET 1 OF 2

600' SCALE MAP NO. 48 BLOCK NO. 13

TAX MAP 48 GRID 13 6TH ELECTION DISTRICT

PARCEL 73 HOWARD COUNTY, MARYLAND

FINAL WATER AND SEWER PLAN

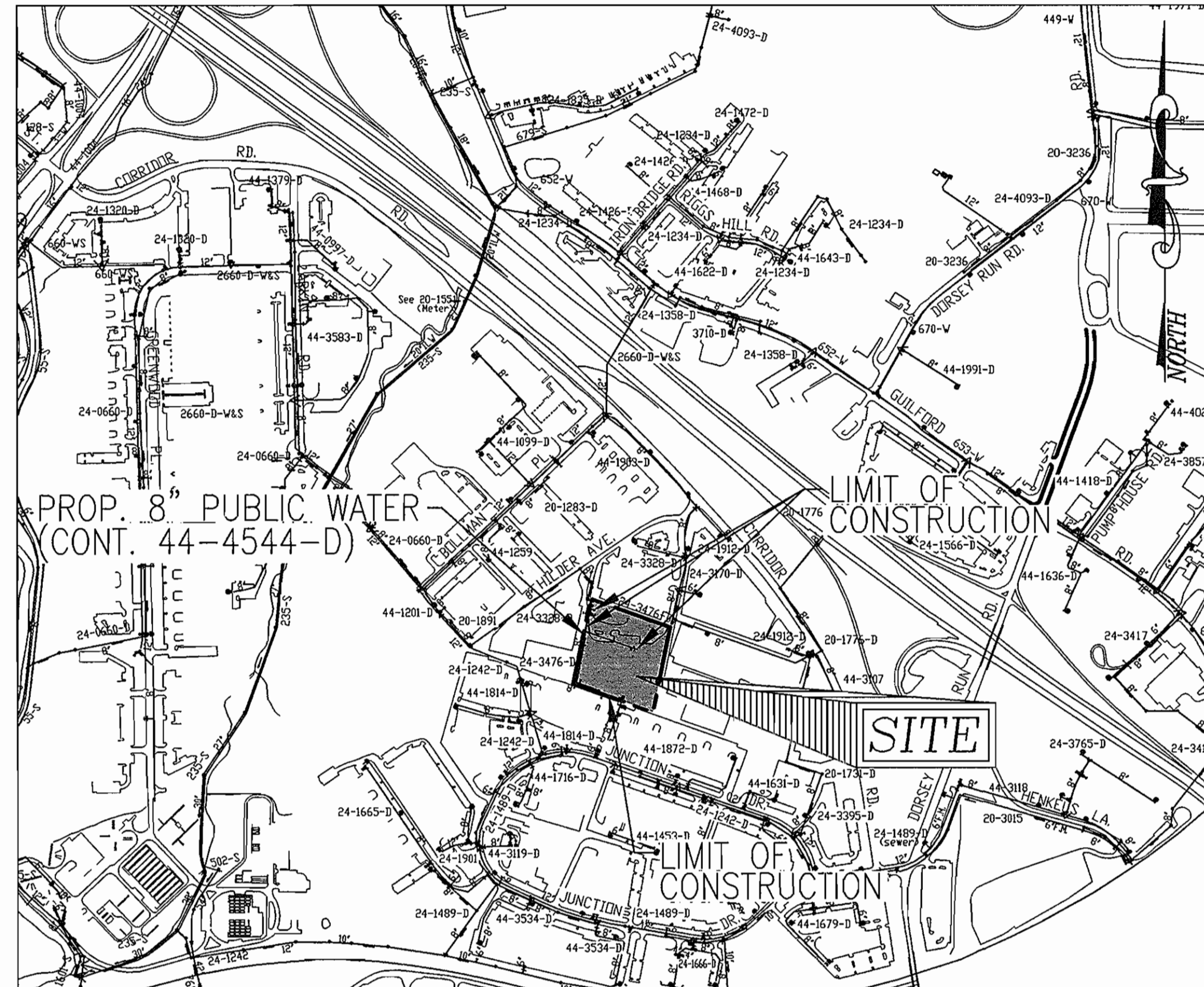
CORRIDOR ROAD

LOT 3

FLEX SPACE

PARCEL 73

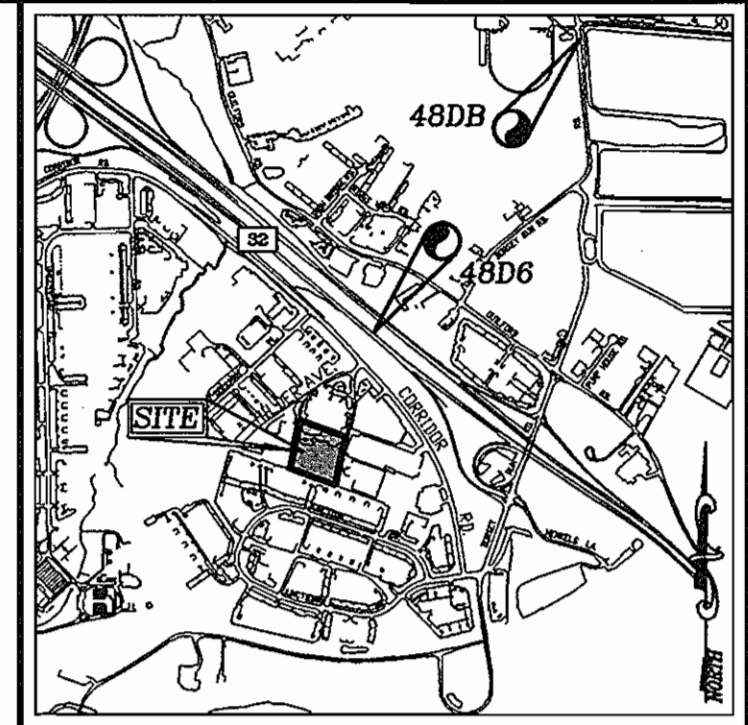
CONTRACT NO. 44-4544-D



LOCATION MAP
 SCALE: 1"=600'

Type of Building :	COMMERCIAL
No. of Lots/Parcels :	1
No. of single Water House Connections :	2
No. of twin Water House Connections :	0
No. of Sewer House Connections :	2
Drainage Area :	LITTLE PATUXENT
Treatment Plant :	LITTLE PATUXENT WRP

BENCHMARKS
 HOWARD COUNTY BENCHMARK 480B
 N 536575.741 E 1371005.807 ELEV. 239.574
 HOWARD COUNTY BENCHMARK 4806
 N 533541.902 E 1368856.922 ELEV. 228.773

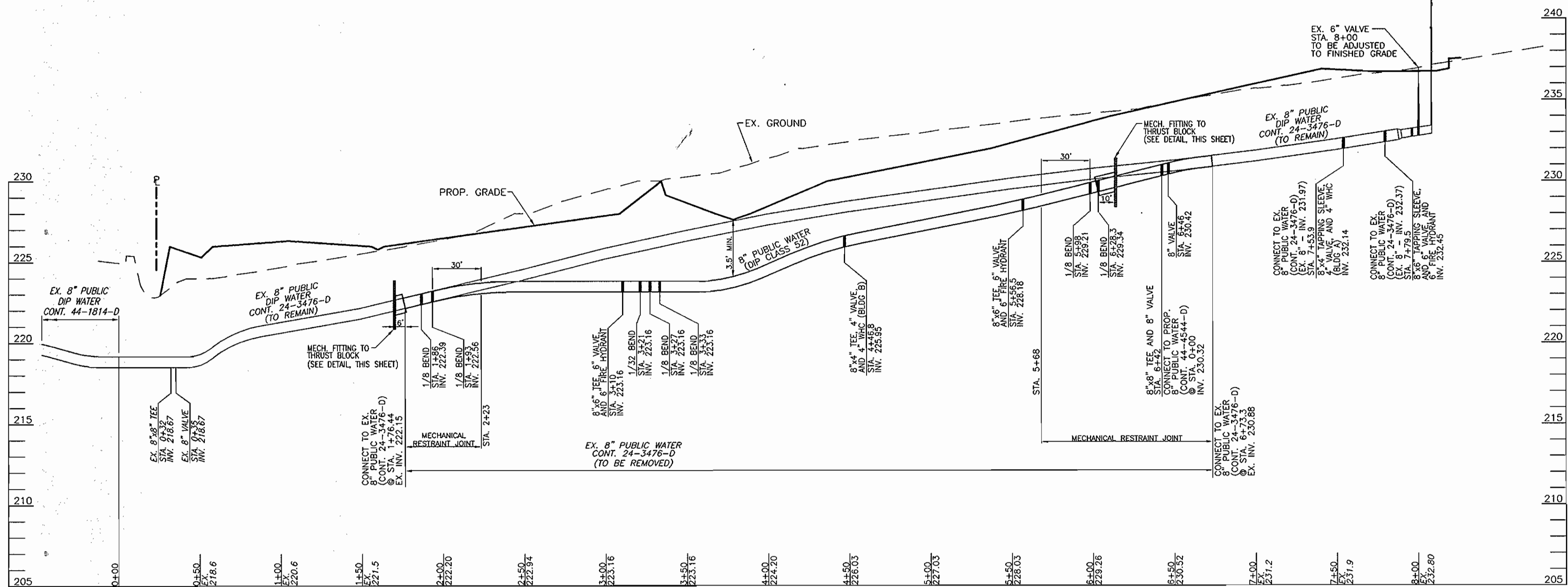


VICINITY MAP
 SCALE: 1"=2000'
 ADC MAP COORDINATE: 20 F9

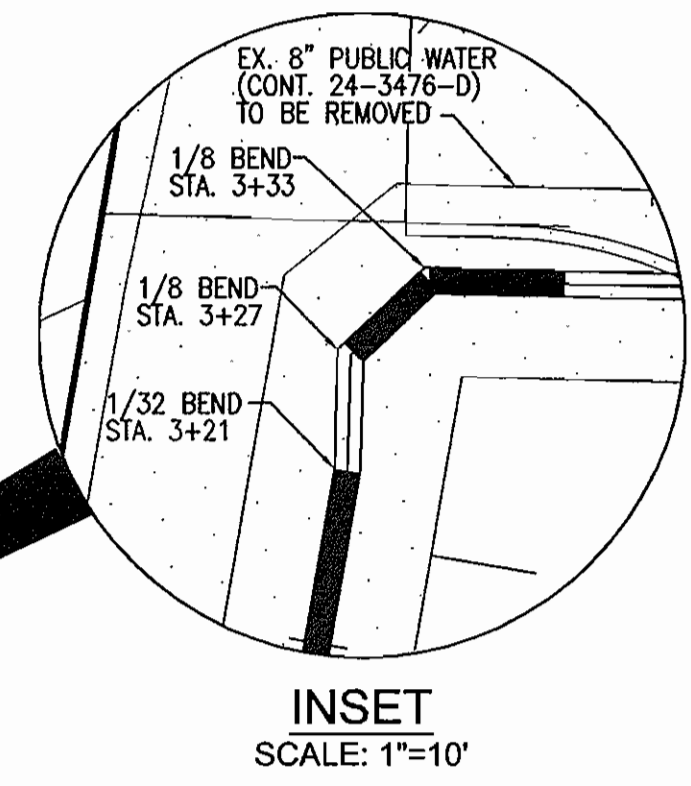
QUANTITIES

NAME OF UTILITY CONTRACTOR :		SURVEY AND DRAFTING DIVISION AS-BUILT DATE :		
ITEMS	QUANTITIES ESTIMATED	AS-BUILT		
		QUANTITIES	TYPE	MANUFACTURER/SUPPLIER
WATER				
8" WATER	820			
6" WATER	63			
4" WATER	35			
8" X 8" TEE	1			
8" X 6" TEE	3			
8" X 4" TEE	3			
8" X 6" TAPPING SLEEVE	1			
8" X 4" TAPPING SLEEVE	1			
8" VALVE	2			
6" VALVE	4			
4" VALVE	4			
6" FIRE HYDRANT	4			
8" - 1/32 BEND	2			
8" - 1/8 BEND	6			
4" CAP AND BUTTRESS	4			
8" CAP AND BUTTRESS	1			
SEWER				
MANHOLE	1			

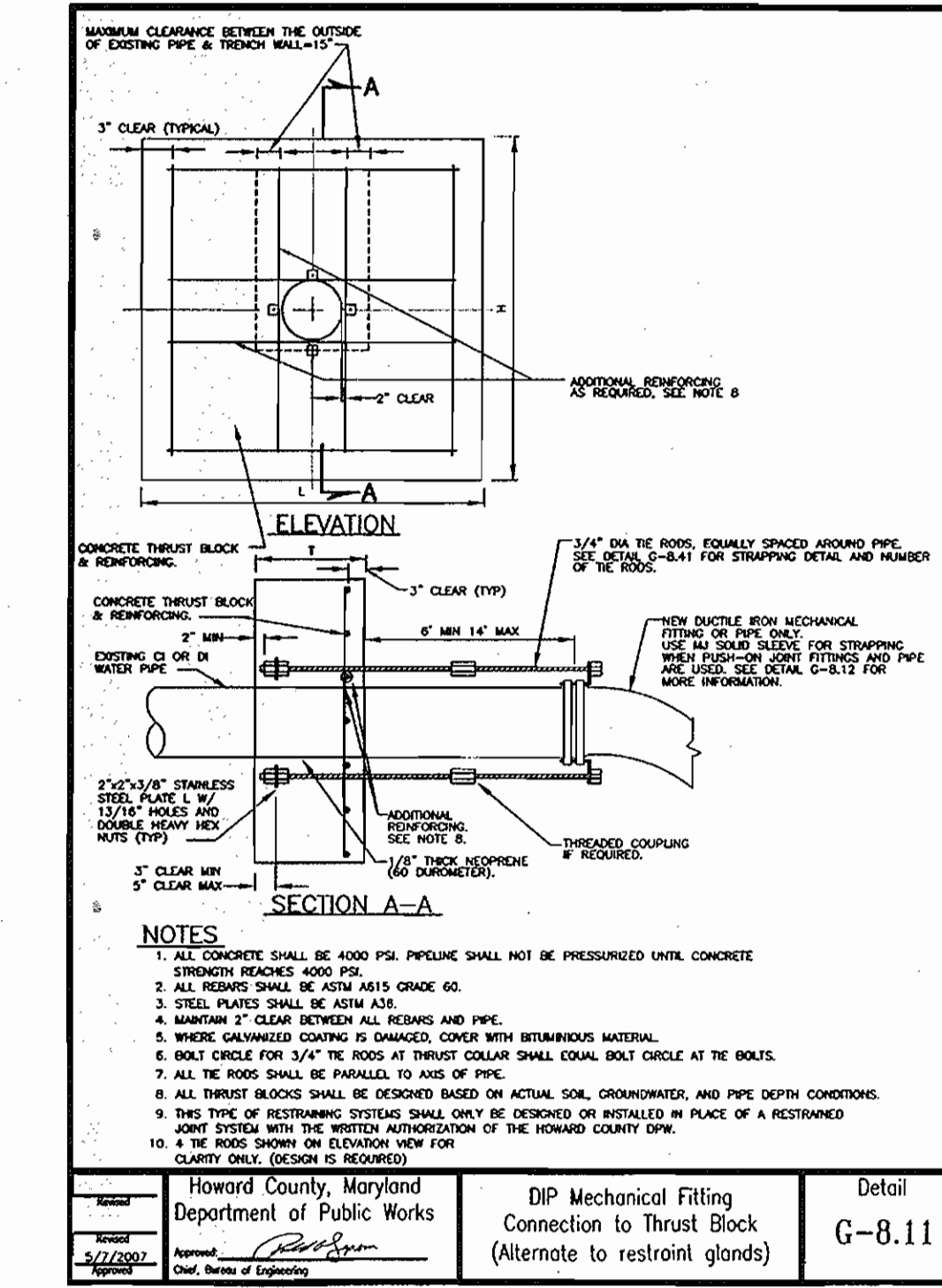
DEVELOPER
 FOCAL DEVELOPMENT
 C/O GREG PHILLIPS
 14059 HIGHLAND ROAD
 CLARKSVILLE, MD 21029
 410-997-0864



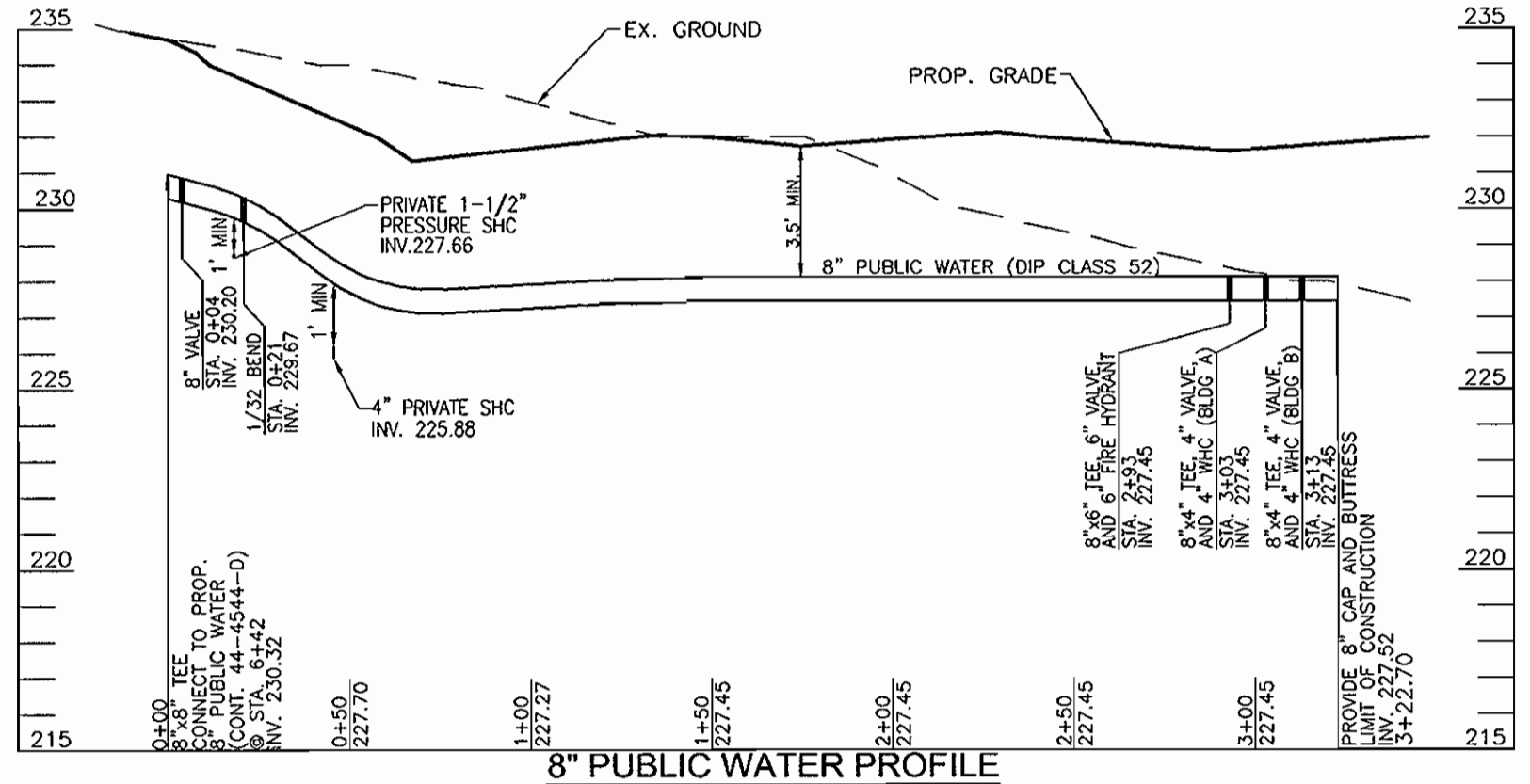
**PUBLIC WATER MAIN PROFILE
RE-ALIGNMENT AND EXTENSION OF CONT. 24-3476-D**
SCALE: HORIZONTAL - 1"=50'
VERTICAL - 1"=5'



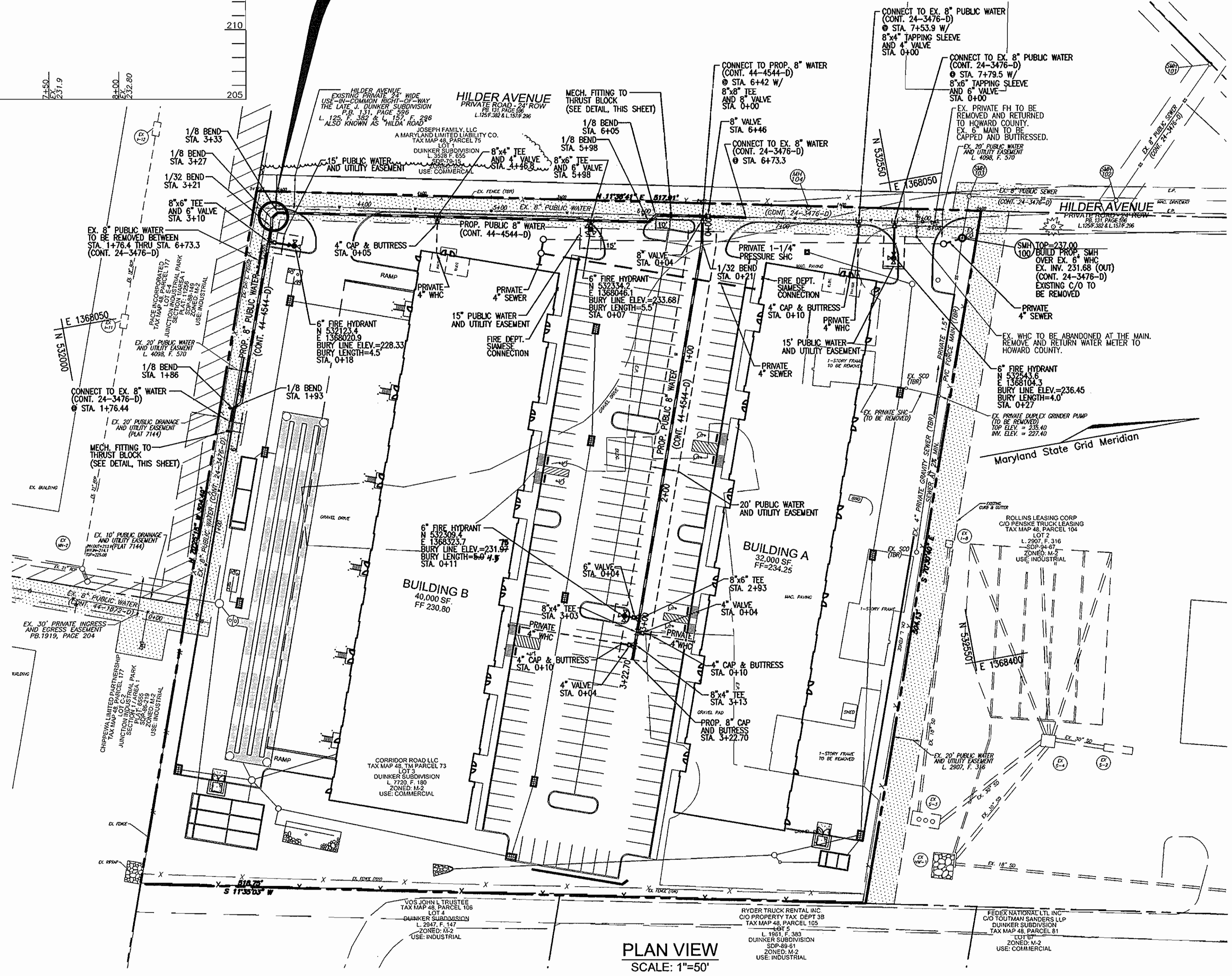
**INSET
SCALE: 1"=10'**



**DETAIL
DIP Mechanical Fitting
Connection to Thrust Block
(Alternate to restraint glands)**
G-8.11



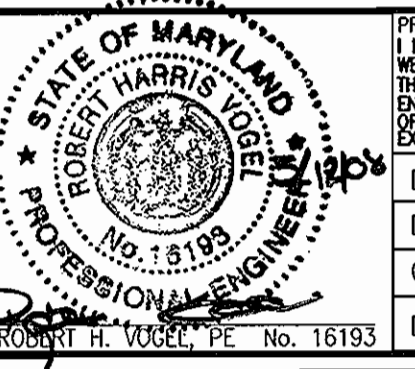
8" PUBLIC WATER PROFILE
SCALE: HORIZONTAL - 1"=50'
VERTICAL - 1"=5'



**PLAN VIEW
SCALE: 1"=50'**

DEVELOPER
FOCAL DEVELOPMENT
C/O GREG PHILIPS
14059 HIGHLAND ROAD
CLARKSVILLE, MD 21029
410-997-0864

**ROBERT H. VOGEL
ENGINEERING, INC.**
ENGINEERS • SURVEYORS • PLANNERS
8407 MAIN STREET
ELLCOTT CITY, MD 21043
TEL: 410-461-7666
FAX: 410-461-8961



PROFESSIONAL CERTIFICATE
I HEREBY CERTIFY THAT THESE DOCUMENTS
WERE PREPARED OR APPROVED BY ME, AND
THAT I AM A duly LICENSED PROFESSIONAL
ENGINEER UNDER THE LAWS OF THE STATE
OF MARYLAND, LICENSE NO. 16193
EXPIRATION DATE: 09-30-2008

DES:	DZ
DRN:	DZ
CHK:	RHV
DATE:	MAY 9, 2008
NO.:	
REVISION:	
DATE:	

**FINAL WATER AND SEWER PLAN
PLAN VIEW AND PROFILES**

**CORRIDOR ROAD LLC
LOT 3
FLEX SPACE
CONTRACT NO. 44-4544-D**

SCALE
AS
SHOWN
SHEET
2 OF 2

DEPARTMENT OF PUBLIC WORKS
HOWARD COUNTY, MARYLAND

DEPARTMENT OF PLANNING & ZONING
HOWARD COUNTY, MARYLAND

600' SCALE MAP NO. 48 BLOCK NO. 13 TAX MAP 48 GRID 13 6TH ELECTION DISTRICT PARCEL 73 HOWARD COUNTY, MARYLAND