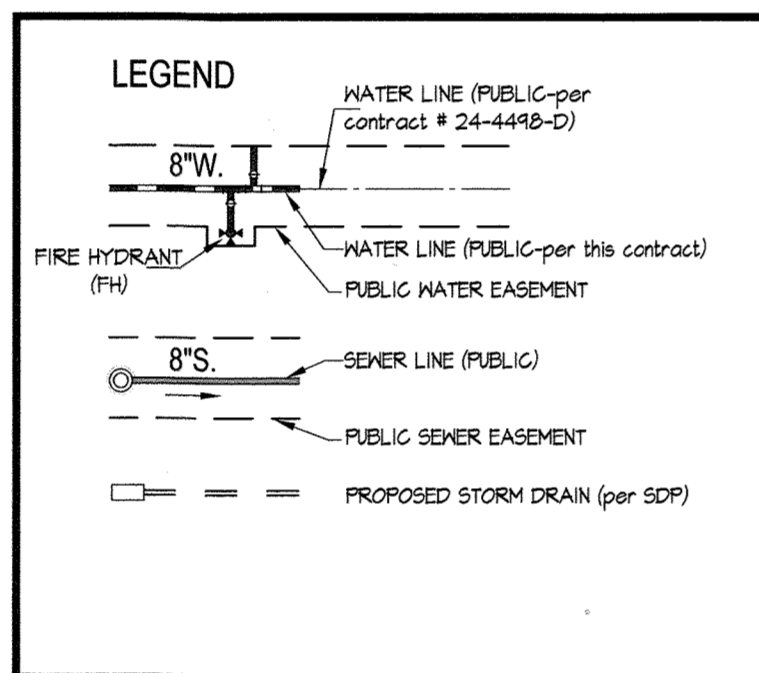
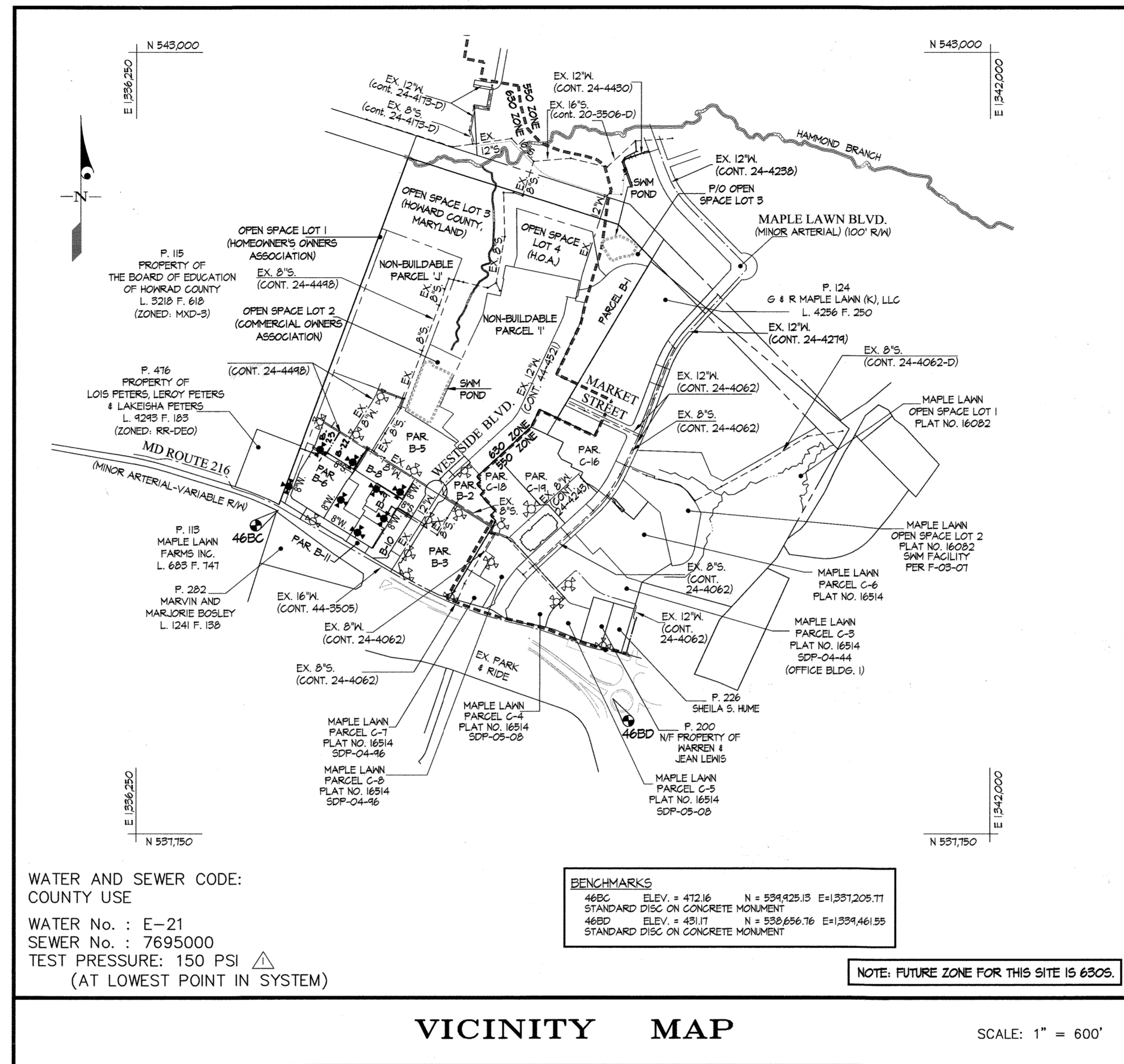


QUANTITIES Δ					
ITEMS	QUANTITIES ESTIMATED	AS-BUILT			
		QUANTITIES	TYPE	MANUFACTURER/SUPPLIER	
4" SEWER MANHOLE	0 EA.	7	PRECAST CONC.	CONTRACTORS PRECAST CORR.	
6" SEWER MAIN	10 L.F.	10	PVC	DIAMOND	
8" SEWER MAIN	820 L.F.	823	"	"	
TYPE 'A' DROP CONNECTION	2 EA.	2	"	"	
TYPE 'B' DROP CONNECTION	2 EA.	2	"	"	
2" MHC	20 L.F.	20	COPPER	"	
6" WATER MAIN	151 L.F.	151	DIP	GRIFFIN	
8" WATER MAIN	2746 L.F.	2746	PVC	DIAMOND	
8" 1/8" H.B.	3 EA.	3	DIP	TYLER UNION	
8" 1/16" H.B.	1 EA.	1	"	"	
8" 1/32" H.B.	2 EA.	2	"	"	
8" x 8" TEE	0 EA.	0	"	"	
8" x 6" FHT	8 EA.	8	"	"	
FIRE HYDRANT	8 EA.	8	"	KENNEDY	
16" x 8" TSV	1 EA.	1	STAINLESS	FORD	
8" HIGH DEFLECTION COUPLING	41 EA.	41	PVC	KENNEDY	
GATE VALVE 8"	1 EA.	1	"	"	
GATE VALVE 6"	1 EA.	1	"	"	
METER BOX			PRECAST	CONTRACTORS PRECAST CORR.	
* Added Jan. 2012 *					
8" x 8" TSV	1 EA.	1	Stainless	Ford	
8" Gate Valve	1 EA.	1	Gate	Kennedy	
4" Sewer Manhole	1 EA.	1	Pre-Cast Conc.	Back River Pre-Cast	
NAME OF UTILITY CONTRACTOR: GAINES & CO.					
SURVEY AND DRAFTING DIV.		CHECKBOX: AS-BUILT DATE:			



SHEET INDEX

- TITLE SHEET
- WATER and SEWER MAIN EXTENSION PLAN
- WATER and SEWER MAIN EXTENSION PROFILES



CONTRACT No. 24-4543-D
MAPLE LAWN FARMS
WESTSIDE DISTRICT - AREA 1
PARCELS B-6 thru B-11

HOWARD COUNTY, MARYLAND
DEPARTMENT OF PUBLIC WORKS

TYPE OF BUILDING	COMMERCIAL BUILDINGS
NUMBER OF UNITS	1 PER BUILDING
NUMBER OF S.H.C.'s	1 PER BUILDING
NUMBER OF W.H.C.'s	1 PER BUILDING
AREA OF COMMERCIAL LOT/PARCEL	1155± AC.
SEWER SHED	LITTLE PATUXENT
PUMPING STATION	N/A



GENERAL NOTES

- PART I**
- APPROXIMATE LOCATIONS OF EXISTING MAINS ARE SHOWN. THE CONTRACTOR SHALL TAKE ALL NECESSARY PRECAUTIONS TO PROTECT EXISTING MAINS AND SERVICES AND MAINTAIN UNINTERRUPTED SERVICE. ANY DAMAGE INCURRED SHALL BE REPAIRED IMMEDIATELY TO THE SATISFACTION OF THE ENGINEER AT THE CONTRACTOR'S EXPENSE.
 - TOPOGRAPHY INDICATED WAS TAKEN FROM AERIAL TOPOGRAPHY PREPARED DURING MARCH 1997 BY SDI.
 - HORIZONTAL AND VERTICAL SURVEY CONTROLS: THE COORDINATES SHOWN ON THE DRAWINGS ARE BASED ON MARYLAND STATE REFERENCE SYSTEM NAD 83/91 AS PROJECTED BY HOWARD COUNTY GEODETIC CONTROL STATIONS No. 46BC AND No. 46BD.

ALL VERTICAL CONTROLS ARE BASED ON NAVD 83. VERTICAL CONTROLS PROVIDED ON DRAWINGS ARE STANDARD DISCS ON CONCRETE MONUMENTS.

4. ALL PIPE ELEVATIONS SHOWN ARE INVERT ELEVATIONS UNLESS OTHERWISE NOTED ON THE PLANS.

5. CLEAR ALL UTILITIES BY A MINIMUM OF 12 INCHES. CLEAR ALL POLES BY 5'-0" MINIMUM OR TUNNEL AS REQUIRED UNLESS OTHERWISE NOTED. THE OWNER HAS CONTACTED THE UTILITY COMPANIES AND HAS MADE ARRANGEMENTS FOR BRACING OF POLES AS SHOWN ON THE DRAWINGS. IN THE EVENT THE CONTRACTOR'S WORK REQUIRES BRACING OF ADDITIONAL POLES, ANY COST INCURRED BY THE OWNER FOR THE BRACING OF ADDITIONAL POLES OR DAMAGES SHALL BE DEDUCTED FROM MONIES OWED THE CONTRACTOR. THE CONTRACTOR SHALL COORDINATE WITH THE UTILITY COMPANIES TO SCHEDULE THE BRACING OF THE POLES.

6. FOR DETAILS NOT SHOWN ON THE DRAWING, AND FOR MATERIALS AND CONSTRUCTION METHODS, USE HOWARD COUNTY DESIGN MANUAL, VOLUME IV, STANDARD SPECIFICATIONS AND DETAILS FOR CONSTRUCTION (LATEST EDITION). THE CONTRACTOR SHALL HAVE A COPY OF VOLUME IV ON THE JOB.

7. WHERE TEST PITS HAVE BEEN MADE ON EXISTING UTILITIES, THEY ARE NOTED BY THE SYMBOL Φ AT THE LOCATIONS OF THE TEST PITS. A NOTE OR NOTES CONTAINING THE RESULTS OF THE TEST PIT OR PITS IS INCLUDED ON THE DRAWINGS. EXISTING UTILITIES IN THE VICINITY OF THE PROPOSED WORK FOR WHICH TEST PITS HAVE NOT BEEN DUG SHALL BE LOCATED BY THE CONTRACTOR TWO WEEKS IN ADVANCE OF THE CONSTRUCTION OPERATIONS AT HIS OWN EXPENSE.

8. THE CONTRACTOR SHALL NOTIFY THE FOLLOWING UTILITY COMPANIES OR AGENCIES AT LEAST FIVE WORKING DAYS BEFORE STARTING WORK ON THESE PLANS:

AT&T	1-800-252-1133
BGE (CONTRACTOR SERVICES)	410-850-4620
BGE (UNDER GROUND DAMAGE CONTROL)	410-685-1400
BUREAU OF UTILITIES	410-313-4400
COLONIAL PIPELINE CO.	410-145-1390
MISS UTILITY	1-800-251-7777
STATE HIGHWAY ADMINISTRATION	410-531-5533
VERIZON	1-800-743-0033 / 410-224-4210

9. TREES AND SHRUBS ARE TO BE PROTECTED FROM DAMAGE TO THE MAXIMUM EXTENT. TREES AND SHRUBS LOCATED WITHIN THE CONSTRUCTION AREA STRIP ARE NOT TO BE REMOVED OR DAMAGED BY THE CONTRACTOR.

10. THE CONTRACTOR SHALL REMOVE TREES, STUMPS AND ROOTS ALONG THE LINE OF EXCAVATION. PAYMENT FOR SUCH REMOVAL SHALL BE INCLUDED IN THE UNIT PRICE BID FOR CONSTRUCTION OF THE MAIN.

11. THE CONTRACTOR SHALL NOTIFY THE BUREAU OF HIGHWAYS, HOWARD COUNTY, AT (410)-313-1450 AT LEAST FIVE WORKING DAYS BEFORE OPEN CUTTING OR BORING/JACKING OF ANY COUNTY ROAD FOR LAYING WATER/SEWER MAINS OR HOUSE CONNECTIONS. THE APPROVAL OF THESE DRAWINGS WILL CONSTITUTE COMPLIANCE WITH DPM REQUIREMENTS PER SECTION 18.114(a) OF THE HOWARD COUNTY CODE.

PART II - WATER

1. EXCEPT AS INDICATED ON THE PLANS, ALL PUBLIC WATER MAINS SHALL BE POLYVINYLCHLORIDE (PVC) PIPE MEETING THE REQUIREMENTS OF ANHA C900 DR18, PRESSURE CLASS 150 AND THE HOWARD COUNTY DESIGN MANUAL VOLUME IV-STANDARD SPECIFICATIONS AND DETAILS FOR CONSTRUCTION AND ALL SUBSEQUENT AMENDMENTS THERETO.

2. TOPS OF ALL WATER MAINS SHALL HAVE A MINIMUM OF 3'-6" OF COVER UNLESS OTHERWISE NOTED.

3. VALVES ADJACENT TO TEES SHALL BE STRAPPED TO TEES.

4. ALL FITTINGS SHALL BE BUTTRESSED OR ANCHORED WITH CONCRETE IN ACCORDANCE WITH STANDARD DETAILS UNLESS OTHERWISE PROVIDED FOR ON THE DRAWINGS.

5. FIRE HYDRANTS SHALL BE SET TO THE BURY LINE ELEVATIONS SHOWN ON THE DRAWINGS. ALL FIRE HYDRANTS SHALL BE RESTRAINED AND BUTTRESSED OR ANCHORED WITH CONCRETE IN ACCORDANCE WITH THE STANDARD DETAILS. THE SOIL AROUND THE FIRE HYDRANT SHALL BE COMPACTED IN ACCORDANCE WITH SECTION 1000 AND 1005 OF THE STANDARD SPECIFICATIONS.

6. THE CONTRACTOR SHALL NOT OPERATE ANY WATER MAIN VALVES ON THE EXISTING WATER SYSTEM.

7. ALL WATER HOUSE CONNECTIONS SHALL BE FOR INSIDE METER SETTING UNLESS OTHERWISE NOTED ON PLANS OR IN SPECIFICATIONS.

8. FOR SPRINKLER SYSTEM FOR ALL TOWN HOMES OR MULTI-FAMILY DWELLING UNITS SHOULD HAVE A MINIMUM OF 1' CONNECTION WITH A 3/4" METER.

9. ALL DUCTILE IRON PIPE (DIP) TO BE USED ON THE PUBLIC WATER SYSTEM SHALL BE CLASS 54. DUCTILE IRON FITTINGS SHALL MEET THE REQUIREMENTS OF THE HOWARD COUNTY DESIGN MANUAL VOLUME IV-STANDARD SPECIFICATIONS AND DETAILS FOR CONSTRUCTION.

10. FIRE HYDRANTS ARE D.I.P. ONLY.

11. VALVES ARE TO BE ATTACHED WITH IRON FITTINGS OR CONCRETE AGCHORS.

12. THE DIMENSION RATIO FOR THE PVC MAIN SHALL BE DR 18.

13. WATER MAIN CONSTRUCTION SHALL CONSIST OF PVC MAIN WITH EPOXY COATED DIP FITTINGS OR PVC MAIN WITH PVC FITTINGS.

14. CATHODIC PROTECTION IS NOT REQUIRED ON FITTINGS SHOWN ON THIS CONTRACT. SOILS IN THIS AREA ARE NON-CORROSIVE.

15. BEDDING FOR PVC PIPE SHALL BE IN ACCORDANCE WITH HOWARD COUNTY STANDARD DETAIL G-2.12.

16. BLOCKING FOR PVC PIPE SHALL BE IN ACCORDANCE WITH HOWARD COUNTY STANDARD DETAIL W-2.21, W-2.22, AND W-2.23.

PART III - SEWER

1. ALL SEWER MAINS SHALL BE D.I.P. OR P.V.C. UNLESS OTHERWISE NOTED.

2. ALL MANHOLES SHALL BE 4'-0" INSIDE DIAMETER UNLESS OTHERWISE NOTED.

3. FORCE MAINS SHALL BE D.I.P. ONLY.

4. MANHOLES SHOWN WITH THE 12" AND 16" WALLS ARE FOR BRICK MANHOLES ONLY.

5. MANHOLES DESIGNATED W.T. IN PLAN AND PROFILE SHALL HAVE WATERTIGHT FRAME AND COVER, STANDARD DETAIL G5.52. WHERE WATERTIGHT MANHOLE FRAMES AND COVERS ARE USED, SET TOP OF FRAME 1'-6" ABOVE FINISHED GRADE UNLESS OTHERWISE NOTED ON THE DRAWINGS.

6. HOUSE(S) WITH THE SYMBOL "C.N.S." INDICATES THE CELLAR CANNOT BE SERVED.

PROPERTY OWNER:

G & R / WESSEL, LLC
c/o GREENEBaum & ROSE ASSOC., INC.
1829 REISTERSTOWN ROAD
SUITE 300, WOODHOLME CENTER
BALTIMORE, MD 21208
ATTN: CHARLIE O'DONOVAN
410-484-8400

SEDIMENT CONTROL MEASURES WILL BE IMPLEMENTED IN ACCORDANCE WITH SECTION 219 OF THE SPECIFICATIONS & WITH SITE DRAWINGS SDP-08-056; DRAWINGS FOR SEDIMENT & EROSION CONTROL.

REVIEWED FOR HOWARD SOIL CONSERVATION DISTRICT AND PERMITS TECHNICAL REQUIREMENT.

U.S.D.A. NATURAL RESOURCES CONSERVATION SERVICE

THIS DEVELOPMENT PLAN IS APPROVED FOR SOIL EROSION AND SEDIMENT CONTROL BY THE HOWARD SOIL CONSERVATION DISTRICT.

APPROVED: *[Signature]* 7/24/08
HOWARD S.C.D. DATE

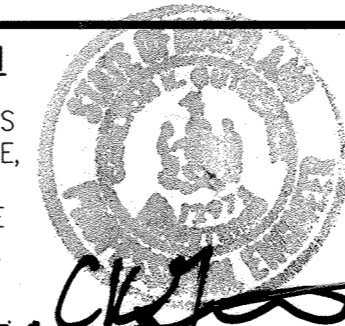
DEPARTMENT OF PUBLIC WORKS
HOWARD COUNTY, MARYLAND

DEPARTMENT OF PLANNING AND ZONING
HOWARD COUNTY, MARYLAND

GLW GUTSCHICK LITTLE & WEBER, P.A.
CIVIL ENGINEERS, LAND SURVEYORS, LAND PLANNERS, LANDSCAPE ARCHITECTS
3909 NATIONAL DRIVE - SUITE 250 - BURTOWNSVILLE OFFICE PARK
BURTOWNSVILLE, MARYLAND 20866
TEL: 301-421-4024 BALT. 410-880-1820 DC/VA. 301-989-2524 FAX: 301-421-4186

DATE: JUNE, 2008
G.L.W. No. 07064

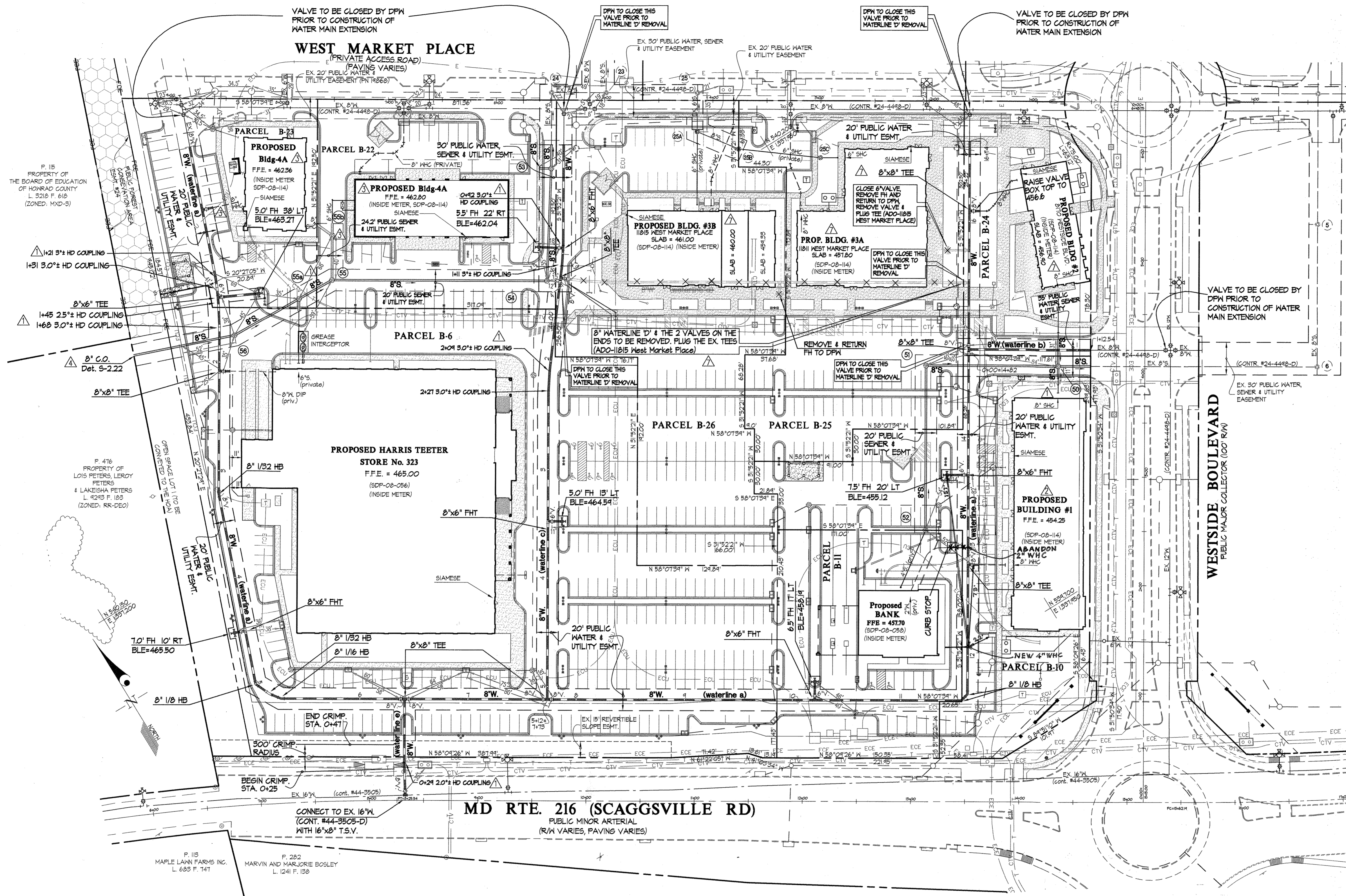
PROFESSIONAL CERTIFICATION
I HEREBY CERTIFY THAT THESE PLANS WERE PREPARED OR APPROVED BY ME, AND THAT I AM A DULY LICENSED PROFESSIONAL ENGINEER UNDER THE LAWS OF THE STATE OF MARYLAND, LICENSE NO. 12975, EXP. DATE: MAY 26, 2010



WRA	AS BUILT PREPARATION FOR ADO.	8/12/21
Gst	Rev. quantities	1/29/2012
KP	Rev. quantities and number of units	4/15/2011
KCI	AS-BUILT DATA ADDED	4-8-09
KP	rev. # of units	01/20/08
AWL	REVISED GENERAL NOTES AND QUANTITIES PER CHANGE TO PVC PIPE (REPLACEMENT SHEET)	06/23/08
BY	NO	REVISION

(REPLACEMENT SHEET)	SCALE AS SHOWN
TITLE SHEET	SHEET 1 OF 3
THIS SHEET SUPERCEDES PLAN SIGNED 03/05/08	
600' SCALE MAP No. 41/46 BLOCK No. 21(41)/3(46)	

MAPLE LAWN FARMS
CONTRACT No. 24-4543-D
WESTSIDE DISTRICT - AREA 1
PARCELS B-6 thru B-11, B-21, B-23
HOWARD COUNTY, MARYLAND
ELECTION DISTRICT No. 5



FITTING INFORMATION		
LOCATION	FITTING	NAD '83/91 COORDINATES
waterline a		
KM. STA. 0+00	-----	N 540418.6 E 1337445.5
KM. STA. 0+50	8" x 8" TEE	N 540425.4 E 1337475.1
KM. STA. 1+21	3.0" HDG (HORIZ)	N 540364.4 E 1337455.1
KM. STA. 1+24	2.5" HDG	N 540358.01 E 1337450.1
KM. STA. 1+51	3.0" HDG (HORIZ)	N 540355.61 E 1337444.1
KM. STA. 1+41	8" x 6" FHT	N 540341.5 E 1337445.1
KM. STA. 1+45	2.5" HDG (HORIZ)	N 540345.24 E 1337442.4
KM. STA. 1+65	3.0" HDG (HORIZ)	N 540325.61 E 1337432.1
KM. STA. 1+75	1.5" HDG	N 540314.86 E 1337426.6
KM. STA. 2+05	8" x 8" TEE	N 540294.1 E 1337410.6
KM. STA. 2+22	2.5" HDG	N 540271.86 E 1337405.6
KM. STA. 2+55	3.0" HDG	N 540251.21 E 1337381.1
KM. STA. 2+61	3.0" HDG	N 540237.48 E 1337375.6
KM. STA. 2+84	3.0" HDG	N 540224.65 E 1337370.5
KM. STA. 3+07	3.0" HDG	N 540205.56 E 1337358.6
KM. STA. 3+21	8" 1/2 HDG	N 540193.4 E 1337351.1
KM. STA. 4+11	1.5" HDG	N 540194.24 E 1337314.4
KM. STA. 4+50	8" x 6" FHT	N 540072.8 E 1337305.6
KM. STA. 4+63	1.0" HDG	N 540060.72 E 1337301.2
KM. STA. 4+83	1.0" HDG	N 540042.12 E 1337294.2
KM. STA. 5+00	8" 1/2 HDG	N 540025.71 E 1337288.0
KM. STA. 5+01	2.5" HDG	N 540025.22 E 1337288.2
KM. STA. 5+15	8" 1/2 HDG	N 540011.5 E 1337242.4
KM. STA. 5+21	8" 1/2 HDG	N 540002.4 E 1337201.0
KM. STA. 5+24	2.5" HDG	N 540001.58 E 1337152.2
KM. STA. 6+41	8" x 8" TEE	N 539442.0 E 1337045.1
KM. STA. 7+54	1.5" HDG	N 539425.94 E 1337043.4
KM. STA. 7+75	8" x 8" TEE	N 539387.24 E 1337010.1
KM. STA. 8+25	1.5" HDG	N 539470.75 E 1337041.5
KM. STA. 9+44	3.0" HDG	N 539475.04 E 1337041.4
KM. STA. 10+21	8" x 6" FHT	N 539411.8 E 1337120.1
KM. STA. 10+75	2.0" HDG	N 539411.31 E 1337166.3
KM. STA. 11+50	2.0" HDG	N 539419.5 E 1337180.0
KM. STA. 11+56	8" 1/2 HDG	N 539410.4 E 1337054.4
KM. STA. 11+64	8" 1/2 HDG	N 539407.3 E 1337043.1
KM. STA. 11+75	1.0" HDG	N 539408.15 E 1337045.9
KM. STA. 12+55	8" x 8" TEE	N 539413.7 E 1337046.0
KM. STA. 12+91	2" HDG	N 539418.1 E 1337044.4
KM. STA. 13+40	1.0" HDG	N 539421.80 E 1337056.0
KM. STA. 13+65	8" x 6" FHT	N 539404.0 E 1337044.1
KM. STA. 14+04	3.0" HDG	N 539416.15 E 1337045.4
KM. STA. 14+32	3.0" HDG	N 539414.86 E 1337045.6
KM. STA. 14+56	2.0" HDG	N 539414.80 E 1337047.0
KM. STA. 14+82	8" x 8" TEE	N 539442.5 E 1338010.7
KM. STA. 15+43	8" x 8" TEE	N 539444.5 E 1338043.1
KM. STA. 15+61	8" x 8" TEE	N 540014.7 E 1338055.5
KM. STA. 15+73	8" x 6" FHT	N 540014.8 E 1338056.0
KM. STA. 16+54	2.0" HDG	N 540042.22 E 1338104.2

FITTING INFORMATION		
LOCATION	FITTING	NAD '83/91 COORDINATES
waterline b		
KM. STA. 0+50	1.0" HDG	N 539418.4 E 1338053.2

FITTING INFORMATION		
LOCATION	FITTING	NAD '83/91 COORDINATES
waterline c		
KM. STA. 0+45	3.0" HDG (HORIZ)	N 540221.1 E 1337142.4
KM. STA. 0+45	8" x 6" FHT	N 540219.0 E 1337140.5
KM. STA. 1+11	3.0" HDG (HORIZ)	N 540220.0 E 1337178.1
KM. STA. 1+25	8" x 6" FHT	N 540196.7 E 1337124.3
KM. STA. 2+04	3.0" HDG (HORIZ)	N 540294.4 E 1337167.0
KM. STA. 2+21	3.0" HDG (HORIZ)	N 540141.1 E 1337166.0
KM. STA. 2+55	1.5" HDG	N 540104.2 E 1337167.5
KM. STA. 3+48	8" x 6" FHT	N 540012.0 E 1337161.9
KM. STA. 4+50	1.0" HDG	N 539424.4 E 1337154.2
KM. STA. 4+45	1.0" HDG	N 539428.70 E 1337151.2
KM. STA. 5+12	8" x 8" TEE	N 539421.4 E 1337101.1

FITTING INFORMATION		
LOCATION	FITTING	NAD '83/91 COORDINATES
waterline d		
KM. STA. 0+00	8" x 8" TEE	N 540146.7 E 1337124.3
KM. STA. 0+21	3.0" HDG	N 540183.7 E 1337040.7
KM. STA. 0+40	3" HDG	N 540112.9 E 1337155.4
KM. STA. 2+03	8" x 6" FHT	N 540066.7 E 1337044.5
KM. STA. 3+44	1.0" HDG	N 540012.5 E 1336914.2
KM. STA. 3+76	8" x 8" TEE	N 539444.5 E 1338043.1

FITTING INFORMATION		
LOCATION	FITTING	NAD '83/91 COORDINATES
waterline e		
KM. STA. 0+42	1.5" HDG	N 539402.5 E 1337173.6
KM. STA. 0+75	1.5" HDG	N 539430.5 E 1337191.0

MH	LOCATION
50	N 5394866.0 E 1338073.0
51	N 5394850.3 E 1337164.4
52	N 5394821.5 E 1337184.3
53	N 540287.2 E 1337110.0
54	N 540201.2 E 1337112.3
55	N 540306.2 E 1337548.5
55a	N 540307.4 E 1337528.3
56	N 540304.8 E 1337440.0
55b	N 540341.0 E 1337157.2

PROPERTY OWNER:
 G & R / WESSSEL, LLC
 c/o GREENBAUM & ROSE ASSOC., INC.
 1829 REISTERSTOWN ROAD
 SUITE 300, WOODHOLME CENTER
 BALTIMORE, MD 21208
 ATTN: MARK BENNETT
 410-484-8400

BY	NO	REVISION	DATE
AWL		REPLACED CRUMPS WITH HORIZ. BEND FOR CHANGE TO PVC, REVERSED FITTING INFORMATION SCHEDULES, ADDED SMH 55b AND REVISED SMH 50 (REPLACEMENT SHEET)	06/24/08
KLP		added bldg's 1-4 from SDP-08-114 (REPLACEMENT SHEET)	09/28/08
KLP		Change Parcel B7 to B22 & B23 for Bldgs 4 & 4A per SDP-07-114. Added new SHC and public sewer smh for new MSSD & added new MHC for Bldg-4A (Replacement Sheet)	04/08/11
AWL		As-built data added	6/3/2010
AWL		As-built data added	2/23/2012

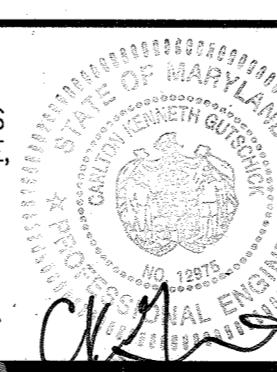
(REPLACEMENT SHEET)
 WATER and SEWER MAIN
 EXTENSION PLAN
 THIS SHEET SUPERCEDES
 PLANS SIGNED 07/25/08
 600' SCALE MAP NO. 41746 BLOCK NO. 21(41)(3/46)

DEPARTMENT OF PUBLIC WORKS
 HOWARD COUNTY, MARYLAND
 DATE: 11/15/15
 CHIEF, BUREAU OF UTILITIES

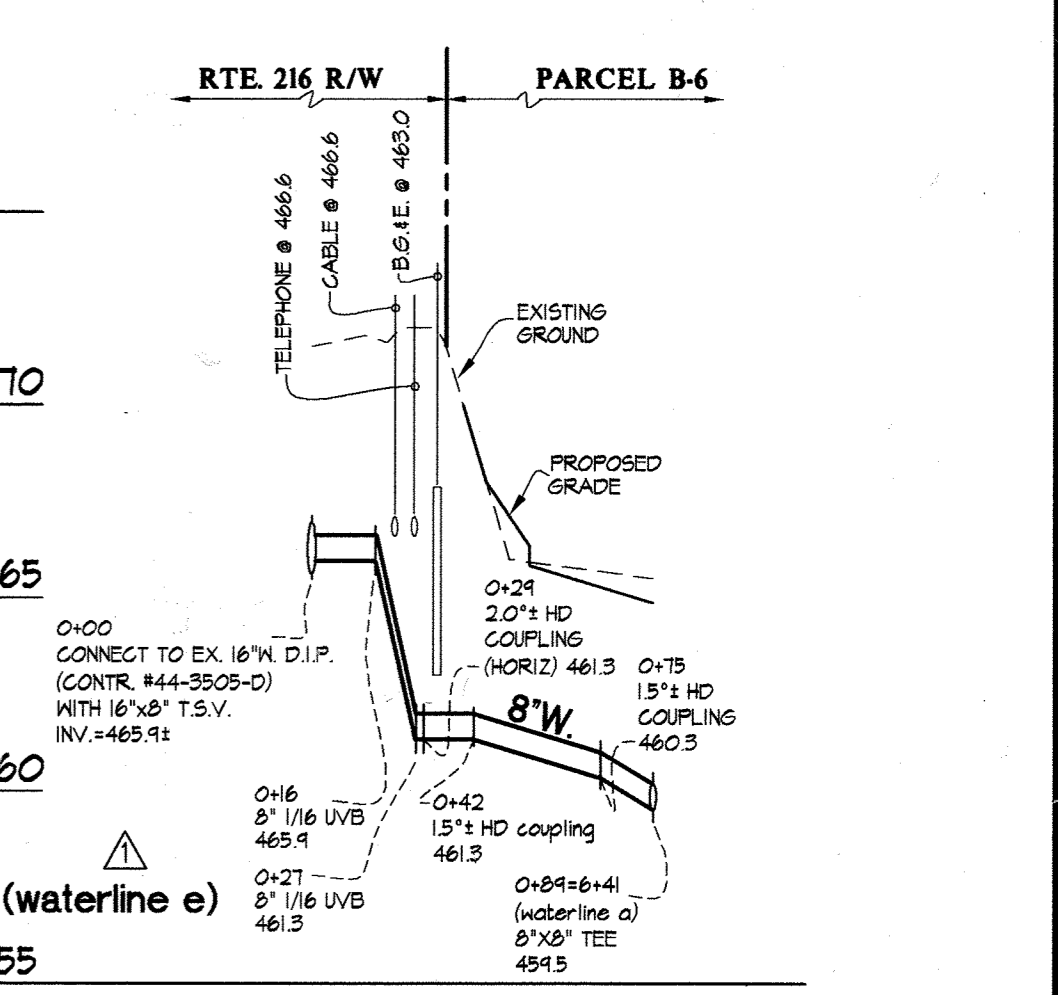
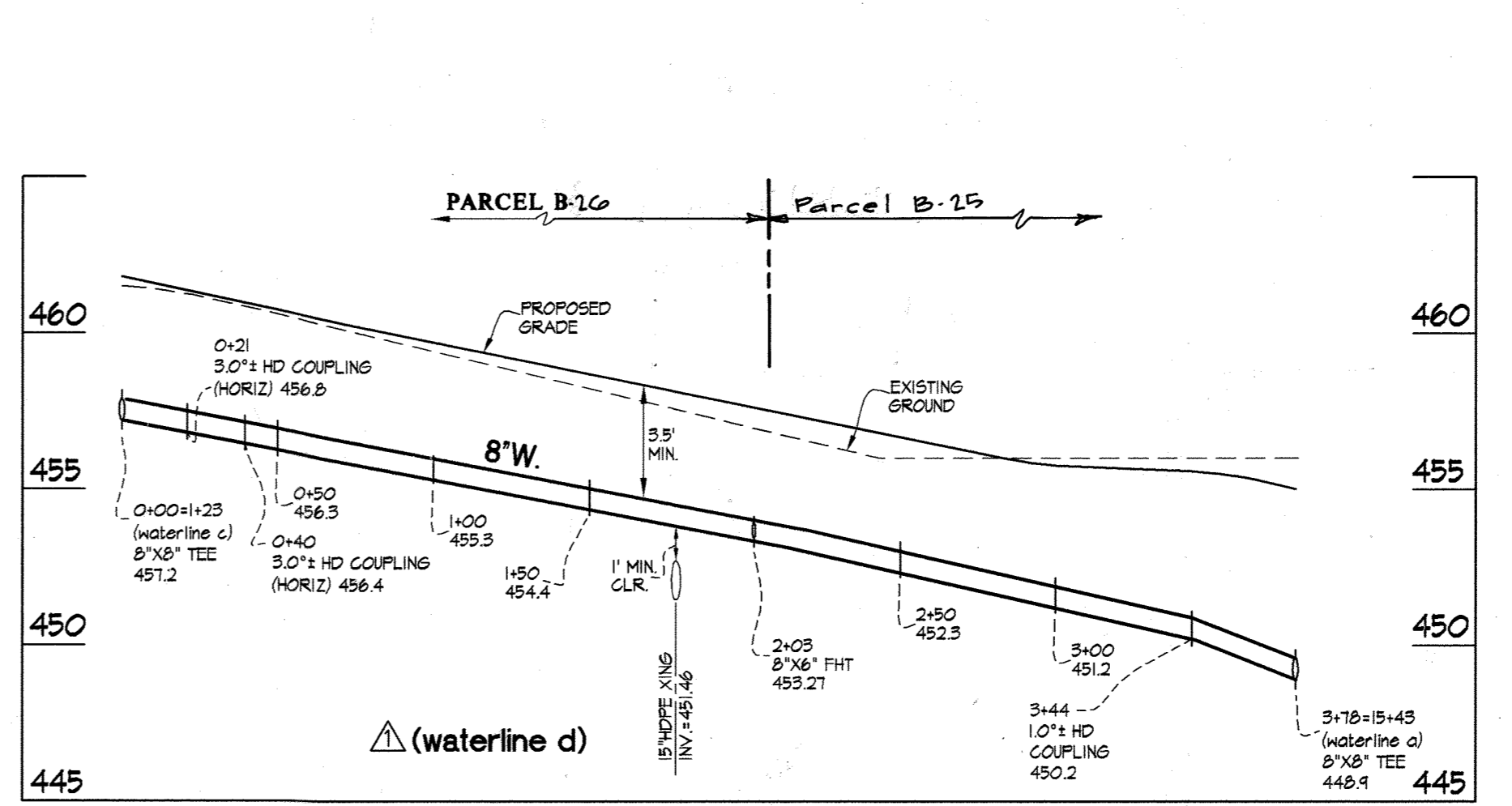
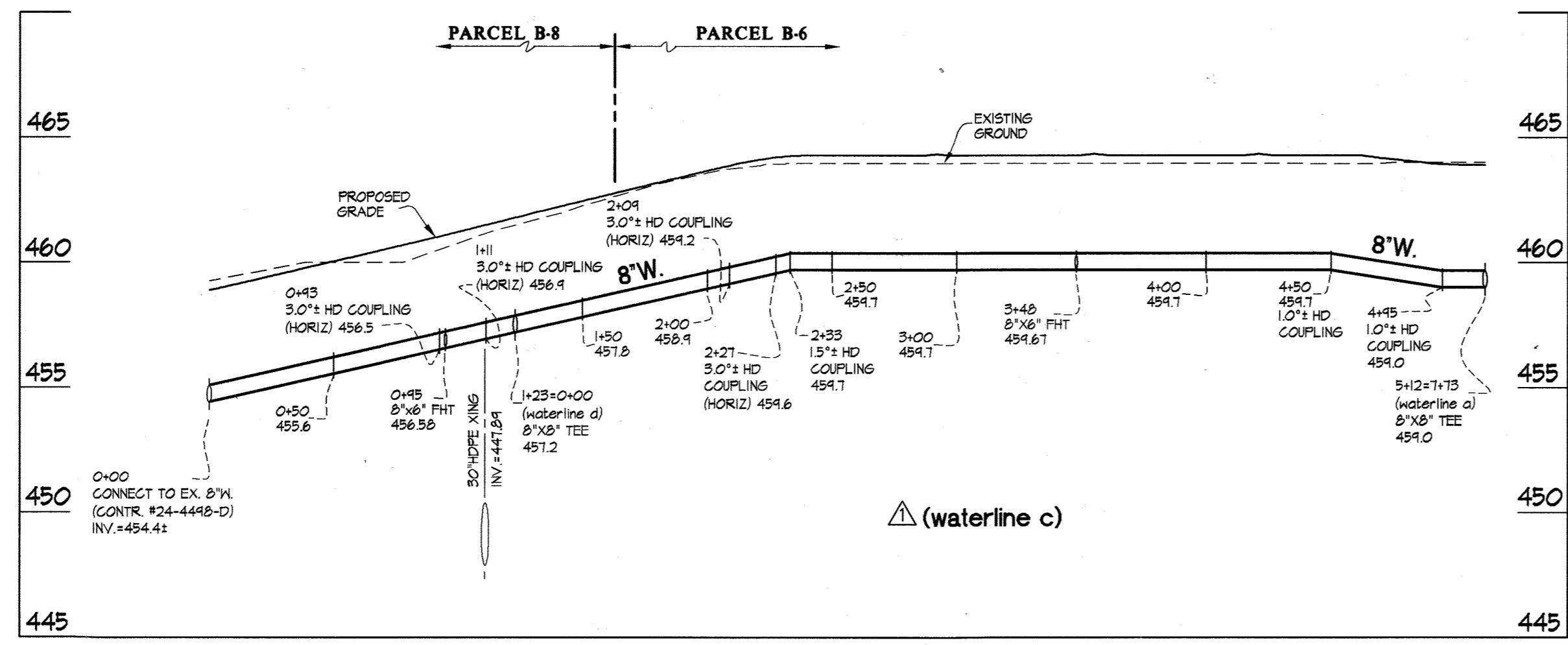
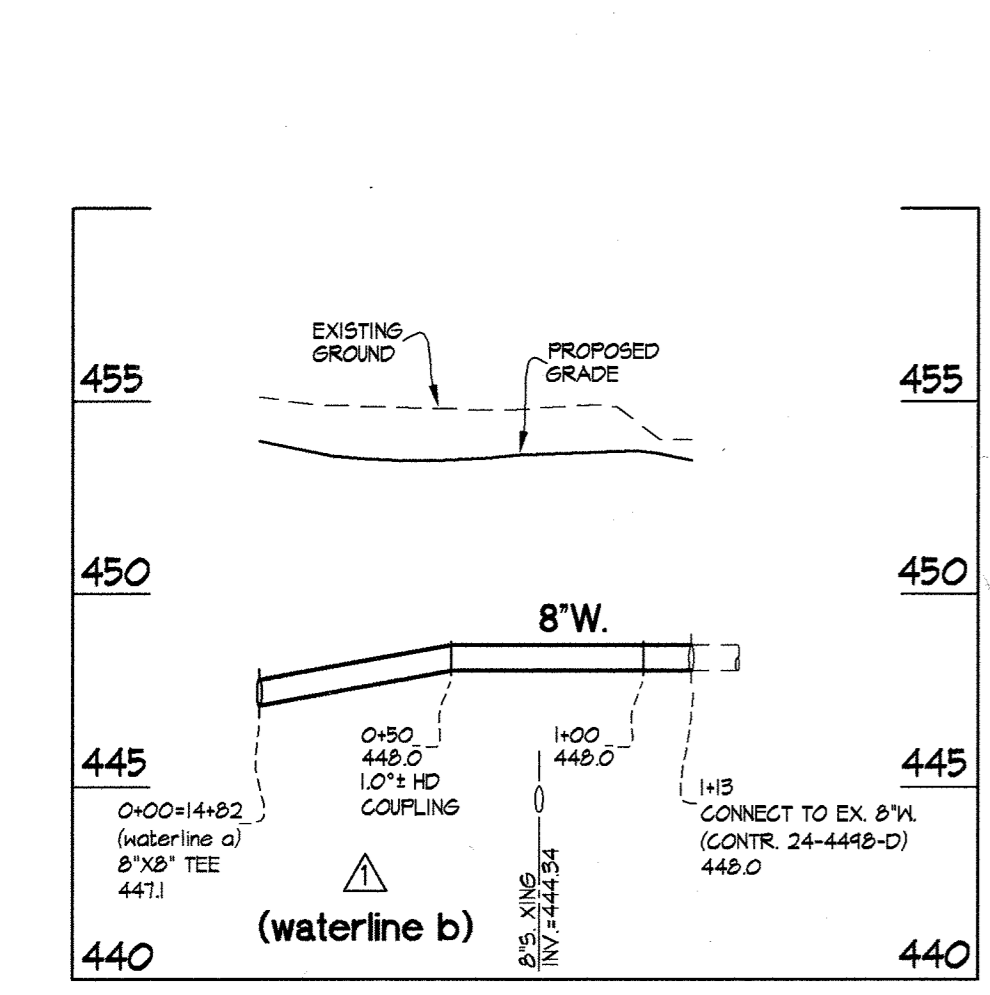
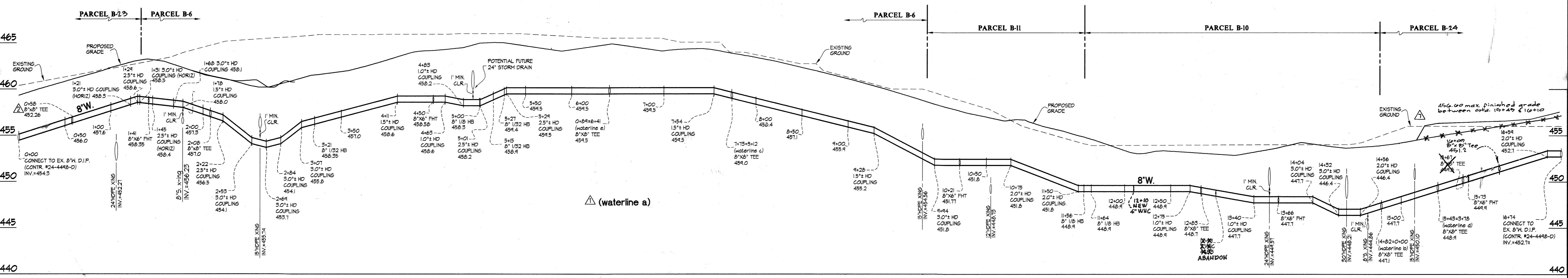
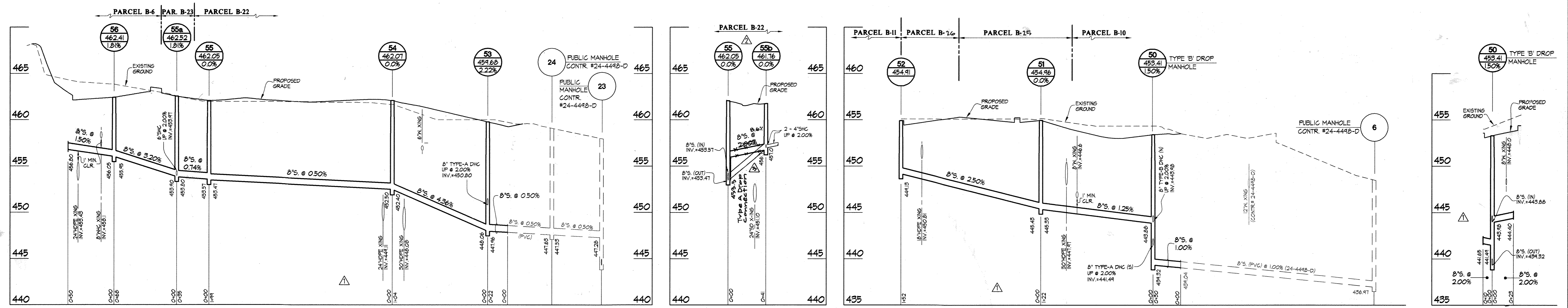
DEPARTMENT OF PLANNING AND ZONING
 HOWARD COUNTY, MARYLAND
 DATE: 11/27/15
 CHIEF, DEVELOPMENT ENGINEERING DIVISION

GLW GUTSCHICK LITTLE & WEBER, P.A.
 CIVIL ENGINEERS, LAND SURVEYORS, LAND PLANNERS, LANDSCAPE ARCHITECTS
 3809 NATIONAL DRIVE - SUITE 250 - BURTONSVILLE OFFICE PARK
 BURTONSVILLE, MARYLAND 20886
 TEL: 301-421-4024 BALT: 410-880-1820 DC/VA: 301-989-2524 FAX: 301-421-4186
 L:\CAD\DRAWINGS\63067\07064\WS\07064-FWS.dwg DES. MBT DRN. krnsty CHK.

DATE: JUNE, 2008
 PROFESSIONAL CERTIFICATION
 I HEREBY CERTIFY THAT THESE PLANS WERE PREPARED OR APPROVED BY ME, AND THAT I AM A DULY LICENSED PROFESSIONAL ENGINEER UNDER THE LAWS OF THE STATE OF MARYLAND, LICENSE NO. 12975
 EXP. DATE: MAY 26, 2016



MAPLE LAWN FARMS
 CONTRACT No. 24-4543-D
 WESTSIDE DISTRICT - AREA 1
 PARCELS B-6, B-10 thru B-11, B-23 thru B-26
 HOWARD COUNTY, MARYLAND
 ELECTION DISTRICT NO. 5
 SCALE: 1" = 50'
 SHEET: 2 OF 3



PROPERTY OWNER:
 G & R / WESSEL, LLC
 c/o GREENEBAUM & ROSE ASSOC., INC.
 1829 REISTERSTOWN ROAD
 SUITE 300, WOODHOLME CENTER
 BALTIMORE, MD 21208
 ATTN: MARK BENNETT
 410-484-8400

DEPARTMENT OF PUBLIC WORKS
 HOWARD COUNTY, MARYLAND
 Chief, Bureau of Utilities

DEPARTMENT OF PLANNING AND ZONING
 HOWARD COUNTY, MARYLAND
 Chief, Development Engineering Division

GLW GUTSCHICK LITTLE & WEBER, P.A.
 CIVIL ENGINEERS, LAND SURVEYORS, LAND PLANNERS, LANDSCAPE ARCHITECTS
 3909 NATIONAL DRIVE - SUITE 250 - BURTONSVILLE OFFICE PARK
 BURTONSVILLE, MARYLAND 20886
 TEL: 301-421-4024 BAL: 410-880-1820 DC/VA: 301-989-2524 FAX: 301-421-4186

DATE: JUNE, 2008
 G.L.W. No. 07064

PROFESSIONAL CERTIFICATION
 I HEREBY CERTIFY THAT THESE PLANS WERE PREPARED OR APPROVED BY ME, AND THAT I AM A DULY LICENSED PROFESSIONAL ENGINEER UNDER THE LAWS OF THE STATE OF MARYLAND, LICENSE NO. 12321
 EXP. DATE: APRIL 10, 2012
 (Professional Engineer Seal)

WRA	AS BUILT PREPARATION FOR A.D.O.	8/12/21
3T	Rev Sewer Profile	12/1/2014
mbt	Added 8" Tee to Water Main-A and added sewer profile between 55 and 55b	04/11/11
AWL	REVISED PROFILES PER CHANGE TO PVC AND REVISED SEWER PER PLAN CHANGES (REPLACEMENT SHEETS)	06/23/08
BY NO	REVISION	DATE

(REPLACEMENT SHEET)
 WATER and SEWER MAIN EXTENSION PROFILES
 THIS SHEET SUPERCEDES PLAN SIGNED 03/05/08
 600' SCALE MAP NO. 41/46 BLOCK NO. 21(41)/3(46)

MAPLE LAWN FARMS
 CONTRACT No. 24-4543-D
 WESTSIDE DISTRICT - AREA 1
 PARCELS B-6, B-10 thru B-11 B-22 & B-23 thru B-10
 HOWARD COUNTY, MARYLAND
 ELECTION DISTRICT No. 5

SCALE: 1" = 50' VERT. 1" = 5' HORIZ.
 SHEET: 3 OF 3