

PART I GENERAL NOTES

- APPROXIMATE LOCATION OF EXISTING MAINS ARE SHOWN. THE CONTRACTOR SHALL TAKE ALL NECESSARY PRECAUTIONS TO PROTECT EXISTING MAINS AND SERVICES AND MAINTAIN UNINTERRUPTED SUPPLY. ANY DAMAGE INCURRED SHALL BE REPAIRED IMMEDIATELY TO THE SATISFACTION OF THE ENGINEER AT THE CONTRACTOR'S EXPENSE.
- TOPOGRAPHIC FIELD SURVEYS WERE PERFORMED ON 12/02/07 BY BENCHMARK ENGINEERING, INC.
- HORIZONTAL AND VERTICAL SURVEY CONTROLS:
THE COORDINATES SHOWN ON THE DRAWINGS ARE BASED ON MARYLAND STATE REFERENCE SYSTEM NAD '83/91 AS PROJECTED BY HOWARD COUNTY GEODETIC CONTROL STATIONS NO. 484B, NO. 477F.
ALL VERTICAL CONTROLS ARE BASED ON NAVD '83. VERTICAL CONTROLS PROVIDED ON THE DRAWINGS.
- ALL VERTICAL CONTROLS ARE BASED ON NAVD '83. VERTICAL CONTROLS PROVIDED ON THE DRAWINGS ARE HOWARD COUNTY CONTROL STATIONS 484B AND 477F.
- ALL PIPE ELEVATIONS SHOWN ARE INVERT ELEVATIONS UNLESS OTHERWISE NOTED ON PLAN.
- CLEAR ALL UTILITIES BY A MINIMUM OF 12". CLEAR ALL POLES BY 5'-0" MINIMUM OR TUNNEL AS REQUIRED UNLESS OTHERWISE NOTED. THE OWNER HAS CONTACTED THE UTILITY COMPANIES AND HAS MADE ARRANGEMENTS FOR BRACING OF POLES AS SHOWN ON THE DRAWINGS. IN THE EVENT THE CONTRACTOR'S WORK REQUIRES THE BRACING OF ADDITIONAL POLES, ANY COST INCURRED BY THE OWNER FOR BRACING OF ADDITIONAL POLES OR DAMAGES SHALL BE DEDUCTED FROM MONIES OWED THE CONTRACTOR. THE CONTRACTOR SHALL COORDINATE WITH THE UTILITY COMPANIES TO SCHEDULE THE BRACING OF THE POLES.
- FOR DETAILS NOT SHOWN ON THE DRAWINGS, AND FOR MATERIALS AND CONSTRUCTION METHODS, USE HOWARD COUNTY DESIGN MANUAL VOLUME IV, STANDARD SPECIFICATIONS AND DETAIL FOR CONSTRUCTION (LATEST EDITION). THE CONTRACTOR SHALL HAVE A COPY OF VOLUME IV ON THE JOB.
- WHERE TEST PITS HAVE BEEN MADE ON EXISTING UTILITIES, THEY ARE NOTED BY THE SYMBOL AT THE LOCATION OF THE TEST PIT. A NOTE OR NOTES CONTAINING THE RESULTS OF THE TEST PIT OR PITS IS INCLUDED ON THE DRAWINGS. EXISTING UTILITIES IN THE VICINITY OF THE PROPOSED WORK FOR WHICH TEST PITS HAVE NOT BEEN MADE SHALL BE LOCATED BY THE CONTRACTOR TWO WEEKS IN ADVANCE OF CONSTRUCTION OPERATIONS AT HIS OWN EXPENSE.
- CONTRACTOR SHALL NOTIFY THE FOLLOWING UTILITY COMPANIES OR AGENCIES AT LEAST FIVE (5) WORKING DAYS BEFORE STARTING WORK SHOWN ON THESE PLANS:

AT&T	1-800-252-1133
BGE CONSTRUCTION SERVICES	410-850-4820
BGE (EMERGENCY)	410-685-1400
HOWARD CO. DEPT. OF PUBLIC WORKS	410-313-4900
BUREAU OF UTILITIES	410-313-4900
COLONIAL PIPELINE CO.	410-795-1390
MISS. UTILITY	1-800-297-7777
STATE HIGHWAY ADMINISTRATION	410-531-6533
VERIZON	1-800-743-0233/410-224-9210
- TREES AND SHRUBS ARE TO BE PROTECTED FROM DAMAGE TO MAXIMUM EXTENT. TREES AND SHRUBS LOCATED WITHIN THE CONSTRUCTION STRIP ARE NOT TO BE REMOVED OR DAMAGED BY THE CONTRACTOR.
- CONTRACTOR SHALL REMOVE TREES, STUMPS AND ROOTS ALONG LINE OF EXCAVATION. PAYMENT FOR SUCH REMOVAL SHALL BE INCLUDED IN THE UNIT PRICE BID FOR CONSTRUCTION OF THE MAIN.
- PLACE REGULATION "MEN WORKING" AND WARNING SIGNS AS REQUIRED TO COMPLY WITH MARYLAND STATE HIGHWAY ADMINISTRATION MANUAL OF TRAFFIC CONTROL FOR HIGHWAY MAINTENANCE OPERATIONS.
- THE CONTRACTOR SHALL NOTIFY THE BUREAU OF HIGHWAYS, HOWARD COUNTY, AT (410) 313-7450 AT LEAST FIVE (5) WORKING DAYS BEFORE ANY OPEN CUT OF ANY COUNTY ROAD OR BORING/JACKING OPERATION IN COUNTY ROADS FOR LAYING WATER/SEWER MAINS OR HOUSE CONNECTIONS. THE APPROVAL OF THESE DRAWINGS WILL CONSTITUTE COMPLIANCE WITH DPW REQUIREMENTS PER SECTION 18.114(c) OF THE HOWARD COUNTY CODE.

PART 2 - WATER

- ALL WATER MAINS TO BE D.I.P. CLASS 64 UNLESS OTHERWISE NOTED.
- TOPS OF ALL WATER MAINS TO HAVE A MINIMUM OF 3.5' COVER UNLESS OTHERWISE NOTED.
- VALVES ADJACENT TO TEES SHALL BE STRAPPED TO TEES.
- ALL FITTINGS SHALL BE BUTTRESSED OR ANCHORED WITH CONCRETE IN ACCORDANCE WITH THE STANDARD DETAILS UNLESS OTHERWISE PROVIDED FOR ON THE DRAWINGS.
- FIRE HYDRANTS SHALL BE SET TO THE BURY LINE ELEVATIONS SHOWN ON THE DRAWINGS. ALL FIRE HYDRANTS SHALL BE RESTRAINED AND BUTTRESSED WITH CONCRETE IN ACCORDANCE WITH STANDARD DETAILS. SOIL AROUND THE FIRE HYDRANT SHALL BE COMPACTED IN ACCORDANCE WITH SECTION 1000 AND 1005 OF THE STANDARD SPECIFICATIONS.
- THE CONTRACTOR SHALL NOT OPERATE ANY WATER MAIN VALVES ON THE EXISTING WATER SYSTEM.
- ALL WATER HOUSE CONNECTIONS SHALL BE FOR INSIDE METER SETTING UNLESS OTHERWISE NOTED ON PLANS OR IN SPECIFICATIONS. ALL WATER HOUSE CONNECTIONS SHALL BE 1" INCH.
- FOR SPRINKLER SYSTEM FOR ALL TOWN HOMES OR MULTI-FAMILY DWELLING UNITS SHOULD HAVE A MINIMUM OF 1' CONNECTION WITH A 3/4" METER.

PART 3 - SEWER

- ALL SEWER MAINS SHALL BE D.I.P. OR P.V.C. UNLESS OTHERWISE NOTED.
- ALL MANHOLES SHALL BE 4' - 0" INSIDE DIAMETER UNLESS OTHERWISE NOTED.
- FORCE MAINS SHALL BE D.I.P. ONLY.
- MANHOLES SHOWN WITH 12" AND 16" WALLS ARE FOR BRICK MANHOLES ONLY.
- MANHOLES DESIGNATED W.T. IN PLAN AND PROFILE SHALL HAVE WATERTIGHT FRAME AND COVERS. STANDARD DETAIL 05-52. WHERE WATERTIGHT MANHOLE FRAME AND COVER IS USED, SET TOP OF FRAME 1'-6" ABOVE FINISHED GRADE UNLESS OTHERWISE NOTED ON THE DRAWINGS.
- HOUSE(S) WITH THE SYMBOL "C.N.S." INDICATES THAT CELLAR CANNOT BE SERVED.

B.W.I.P. BLOCK C, PARCEL C

REPUBLIC NATIONAL DISTRIBUTING CO.

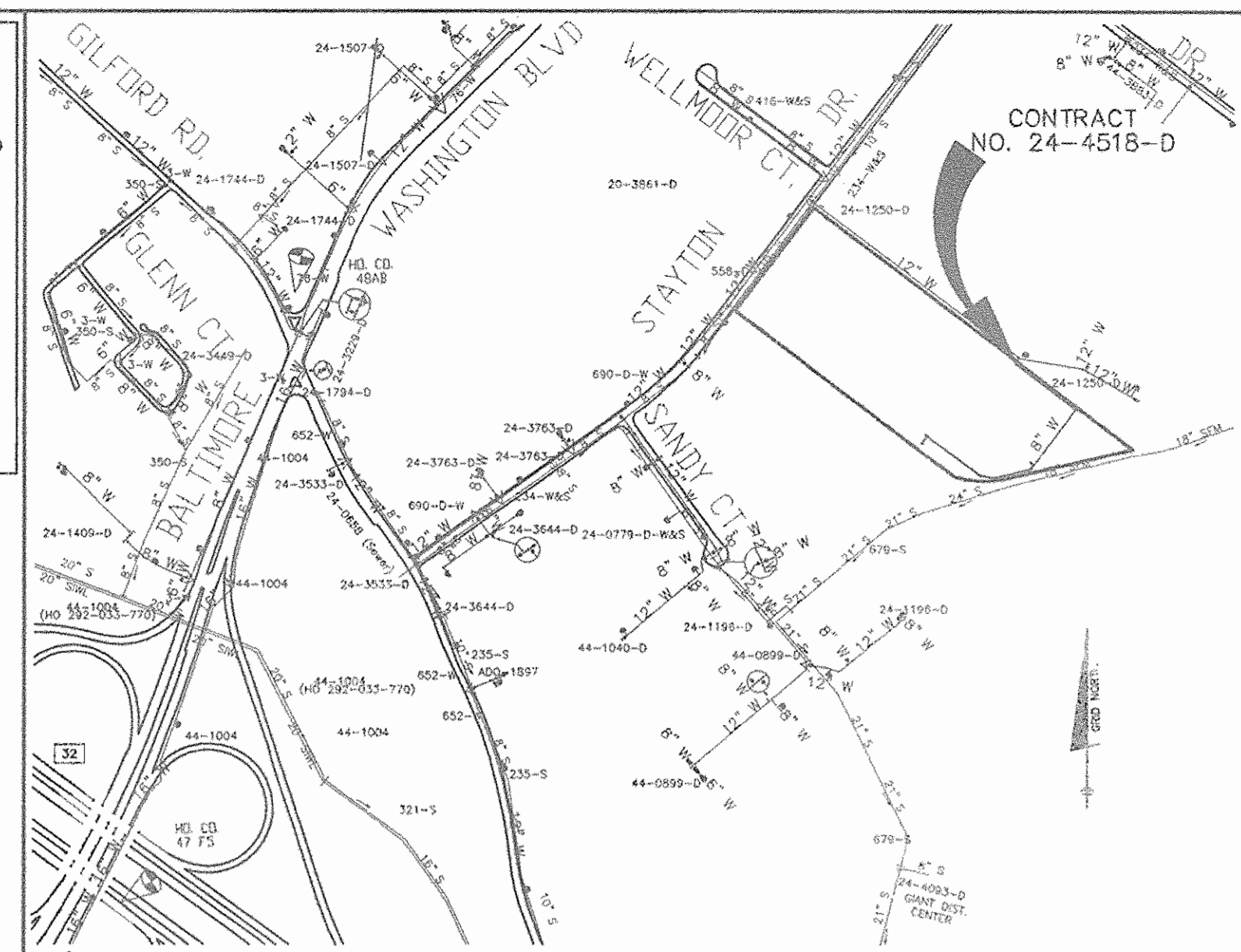
WAREHOUSE ADDITION

6TH ELECTION DISTRICT

CONTRACT NO. 24-4518-D

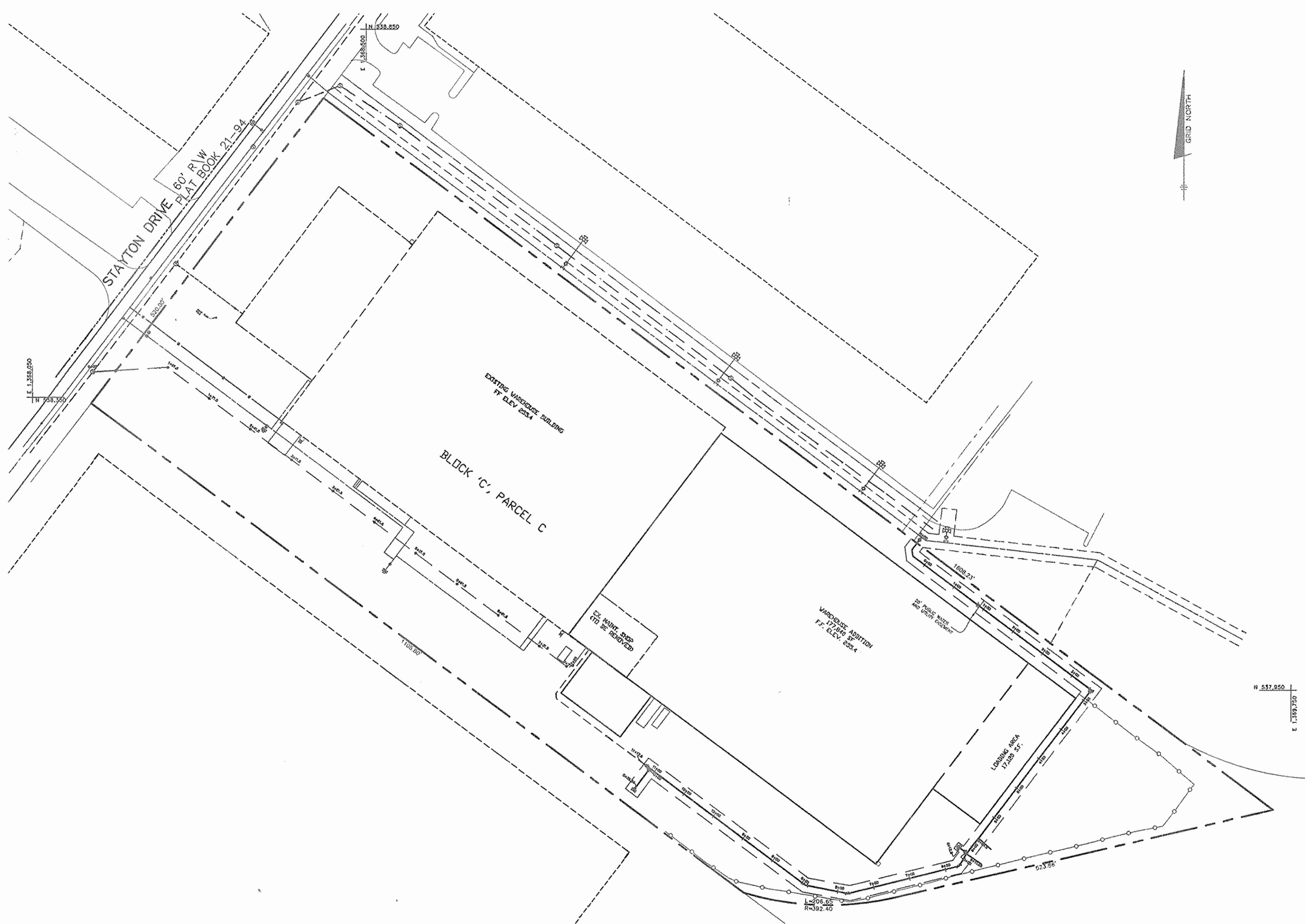
BENCH MARKS NAD '83

HO. CO. 484B	ELEV. 225.700
STAMPED DISC ON CONCRETE MONUMENT LOCATED ON THE SW CORNER OF ROUTE 1 AND GUILFORD ROAD.	
N 536384.453	E 1366415.81
HO. CO. 477F	ELEV. 235.045
STAMPED DISC ON CONCRETE MONUMENT LOCATED IN THE ISLE BETWEEN RT. 32 AND SERV. RD. EAST OF RT. 1	
N 535985.024	E 1365653.51



WATER AND SEWER COUNTY CODE

WATER CODE:	802	TYPE OF BUILDING:	RETAIL/COMMERCIAL
SEWER CODE:	4201900	NUMBER OF BUILDABLE PARCELS:	1
TEST GRADIENT:	550	NUMBER OF SHC'S:	1
		NUMBER OF WHC'S:	1
		DRAINAGE AREA:	PATUXENT
		TREATMENT PLANT:	LITTLE PATUXENT WATER RECLAMATION PLANT



ADC MAP 20 GRID F-6
VICINITY MAP
SCALE: 1" = 600'

EXIST. WATER MAIN	
EXIST. SEWER MAIN	
EXIST. SEWER MANHOLE	
PROP. WATER MAIN	
PROP. SEWER MAIN	
PROP. STORM DRAIN (BY OTHERS)	
PROP. SEWER MANHOLE	
PROP. TERMINAL MANHOLE	
PROP. SEWER HOUSE CONNECTION	
PROP. WATER HOUSE CONNECTION (DOUBLE - 1 1/2")	
PROP. WATER HOUSE CONNECTION (SINGLE - 1")	
PROP. FIRE HYDRANT	
PROP. VALVE	

QUANTITIES

ITEMS	QUANTITIES ESTIMATED	AS-BUILT		
		QUANTITIES	TYPE	MANUF./SUPPLIER
12"x8" TS & V	1 EACH			
6" V	2 EACH			
8" V	1 EACH			
FIRE HYDRANT	2 EACH			
6" WATER MAIN	49 L.F.			
8" WATER MAIN	1105 L.F.			
6" SHC	32 L.F.			

NAME OF UTILITY CONTRACTOR:
SURVEY AND DRAFTING DIVISION AS-BUILT DATE:

THIS PLAN IS APPROVED FOR SOIL EROSION AND SEDIMENT CONTROL BY THE HOWARD SOIL CONSERVATION DISTRICT.

John K. Polunsky 2/19/08
HOWARD SOIL CONSERVATION DISTRICT

OWNER: 8201 ASSOCIATES LIMITED PARTNERSHIP
REPUBLIC NATIONAL DISTRIBUTING COMPANY
8201 STAYTON DR
JESSUP MD 20794-9599
410-724-3300

PLAN
SCALE: 1" = 100'

SHEET INDEX

NO.	DESCRIPTION
1	TITLE SHEET
2	PUBLIC WATER AND SEWER PLAN AND PROFILES

DEPARTMENT OF PUBLIC WORKS
HOWARD COUNTY, MARYLAND
Stacy C. Combs 2/21/08
CHIEF, BUREAU OF UTILITIES

DEPARTMENT OF PLANNING AND ZONING
HOWARD COUNTY, MARYLAND
William J. ... 2/20/08
CHIEF, DEVELOPMENT ENGINEERING DIVISION

BENCHMARK
ENGINEERS & LAND SURVEYORS & PLANNERS
ENGINEERING, INC.
8480 BALTIMORE NATIONAL PIKE & SUITE 418
ELICOTT CITY, MARYLAND 21043
PHONE: 410-455-5105 FAX: 410-465-6644
WWW.BEI-ENGINEERING.COM

Professional Engineer Seal for *Doreen M. ...*
Professional Engineer
No. 21495
2-5-08

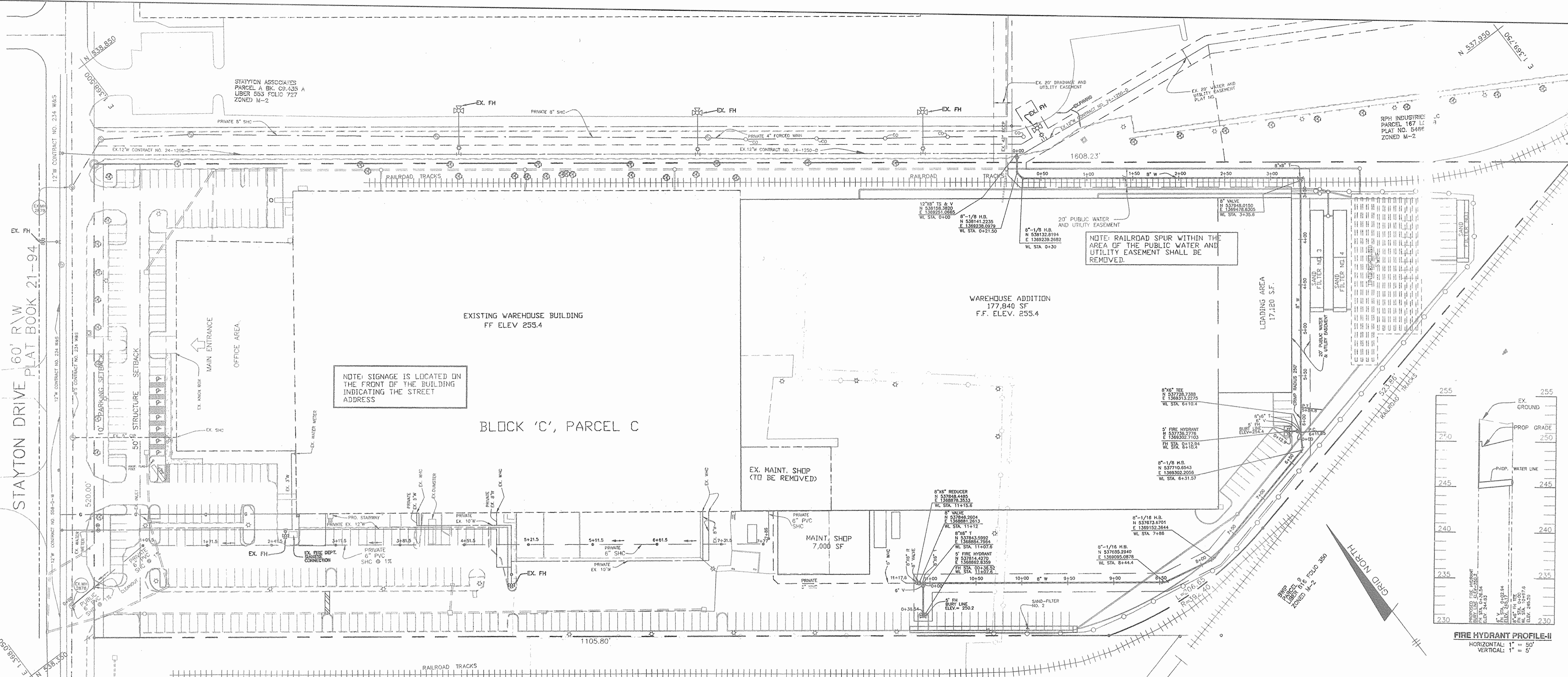
DES: DAM					
DRN: EDD					
CHK: DAM					
DATE: 12/07	BY	NO.	REVISIONS	DATE	

PUBLIC WATER AND SEWER PLAN AND NOTES

600 SCALE MAPS: 48 BLOCK: 1

BALTIMORE WASHINGTON INDUSTRIAL PARK
BLOCK C, PARCEL C
REPUBLIC NATIONAL DISTRIBUTING CO.
WAREHOUSE ADDITION
6TH ELECTION DISTRICT
CONTRACT NO. 24-4518-D

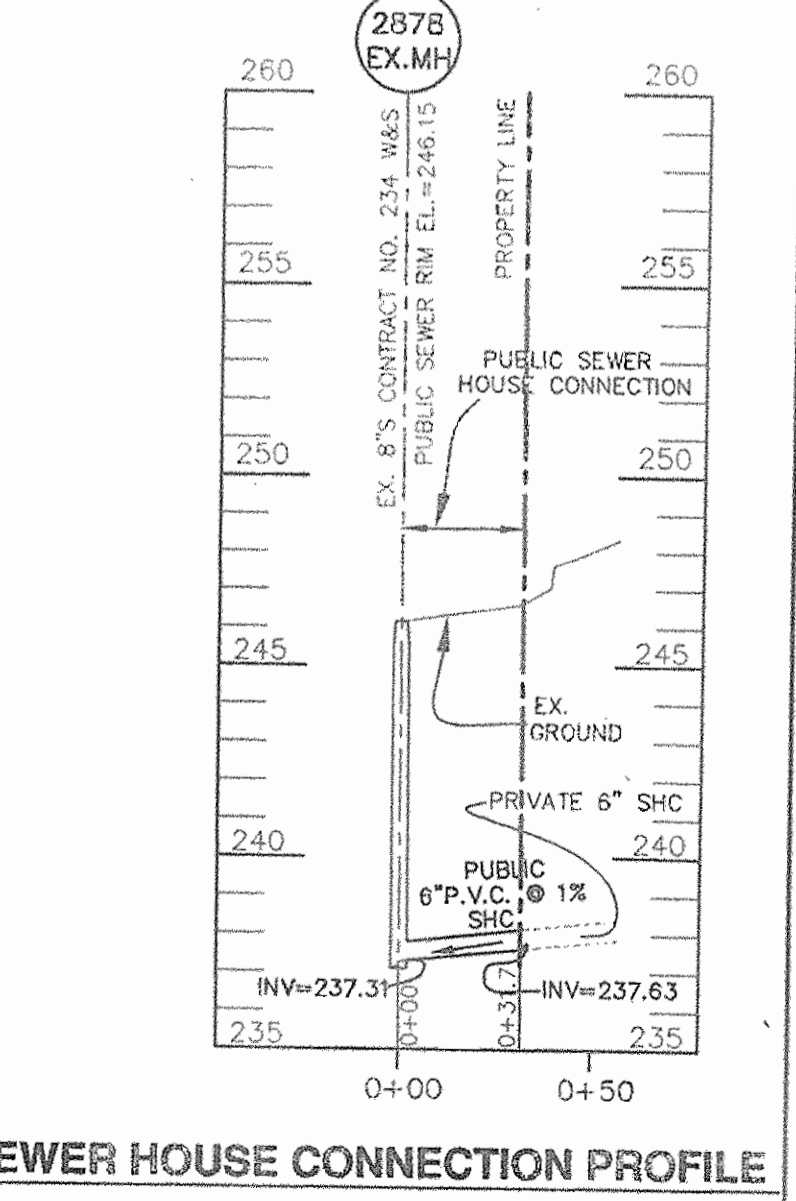
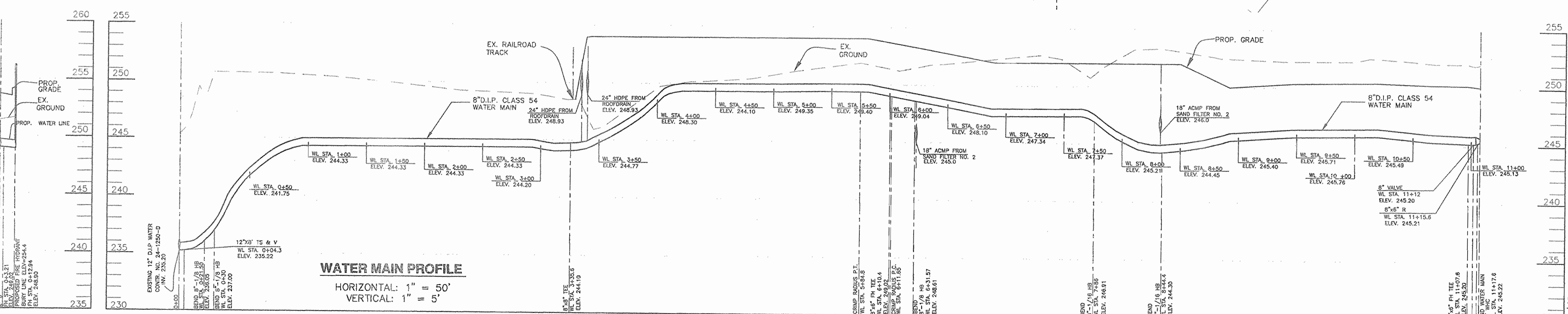
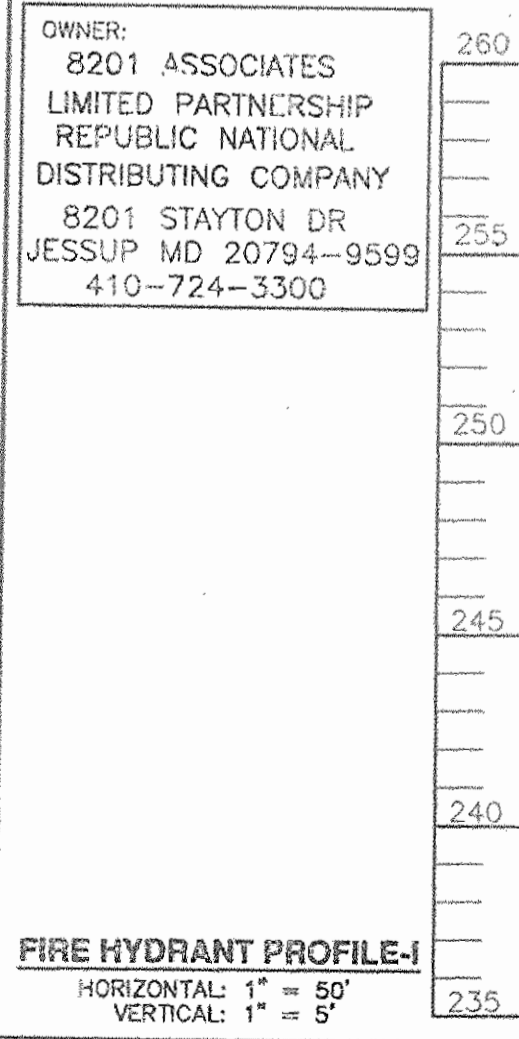
SCALE: AS SHOWN
SHEET NO. 1 OF 2



PLAN
SCALE: 1" = 50'

OWNER:
8201 ASSOCIATES
LIMITED PARTNERSHIP
REPUBLIC NATIONAL
DISTRIBUTING COMPANY
8201 STAYTON DR
JESSUP MD 20794-9599
410-724-3300

PRIME STAYTON LIMITED PARTNERSHIP
PARCEL E-19.2814 A
PLAT NO. 14112
ZONED M-2



DEPARTMENT OF PUBLIC WORKS
HOWARD COUNTY, MARYLAND

Steve C. Con
CHIEF, BUREAU OF UTILITIES
2/12/08
DATE

DEPARTMENT OF PLANNING AND ZONING
HOWARD COUNTY, MARYLAND

John J. ...
CHIEF, DEVELOPMENT ENGINEERING DIVISION
2/12/08
DATE

BENCHMARK
ENGINEERS & LAND SURVEYORS & PLANNERS
ENGINEERING, INC.
8480 BALTIMORE NATIONAL PIKE & SUITE 418
ELLCOTT CITY, MARYLAND 21043
PHONE: 410-465-5105 FAX: 410-465-6644
WWW.BENCHMARKENGINEERING.COM

D. ...
PROFESSIONAL ENGINEER
NO. 21443
2-5-08

DES:	DAM				
DRN:	EDD				
CHK:	DAM				
DATE:	12/07				
BY:	NO.	REVISIONS	DATE	600 SCALE MAPS: 48	BLOCK: 1

**PUBLIC WATER AND SEWER
PLAN AND PROFILES**

BALTIMORE WASHINGTON INDUSTRIAL PARK
BLOCK C, PARCEL C
REPUBLIC NATIONAL DISTRIBUTING CO.
WAREHOUSE ADDITION
6TH ELECTION DISTRICT
CONTRACT NO. 24-4518-D

SCALE:
AS SHOWN

SHEET NO.
2 OF 2

P:\192_BW\DWG\0446.dwg, PUBLIC_PROFILE.dwg, 2/12/08 10:46:19 AM