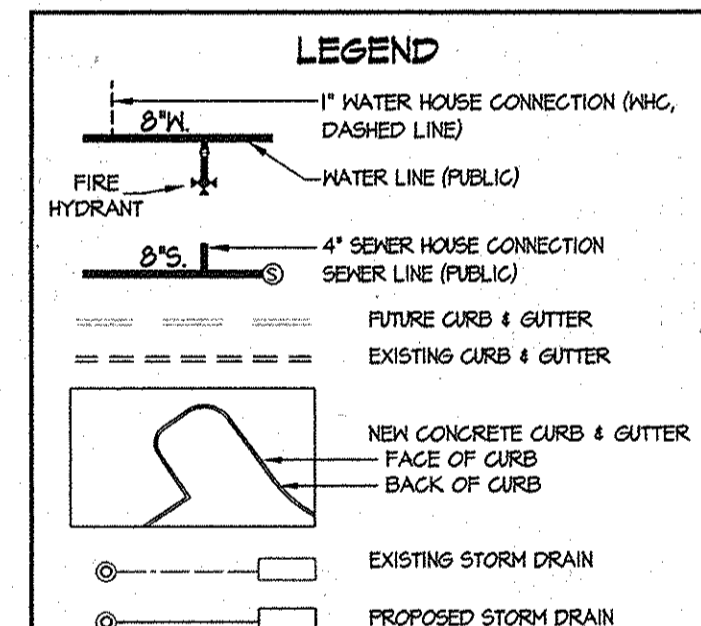


QUANTITIES				
ITEMS	QUANTITIES ESTIMATED	AS-BUILT		
		QUANTITIES	TYPE	MANUFACTURER/SUPPLIER
6" WATER	60 LF		Ductile Iron Pipe	Griffin Pipe
8" WATER MAIN	246 LF		Ductile Iron Pipe	Griffin Pipe
12" WATER MAIN	1540 LF		Ductile Iron Pipe	Griffin Pipe
1" MHC	617 LF		Type K	Cambridge Lee
8" 1/2 H.B.	1 EA.	1	MJ	Tyler Union
8" 1/2 H.B.	1 EA.	1	MJ	Tyler Union
8" CAP	5 EA.	5	MJ	Tyler Union
6" VALVE	5 EA.	5	MJ	Tyler Union
8" VALVE	5 EA.	5	MJ	Tyler Union
12" VALVE	2 EA.	2	MJ	Tyler Union
12"x12" TEE	1 EA.	1	MJ	Tyler Union
12"x8" TEE	4 EA.	4	MJ	Tyler Union
12" 1/2 H.B.	1 EA.	1	MJ	Tyler Union
12" 1/2 H.B.	2 EA.	2	MJ	Tyler Union
12"x12" T.S.&V.	1 EA.	1	S.S. Tap	Ford Meter Box
12"x8" REDUCER	1 EA.	1	MJ	Tyler Union
12"x6" FHT	5 EA.	5		American Flow Control
FIRE HYDRANT	5 EA.	5	884-B	American Flow Control
8" SEWER MAIN	509 LF		SPR35	JM Eagle
4" SHC	691 LF		SPR35	JM Eagle
4" MANHOLE	4 EA.	4		Americast
TYPE 'B' DROP CONN.	2 EA.	2		Americast

NAME OF UTILITY CONTRACTOR: _____

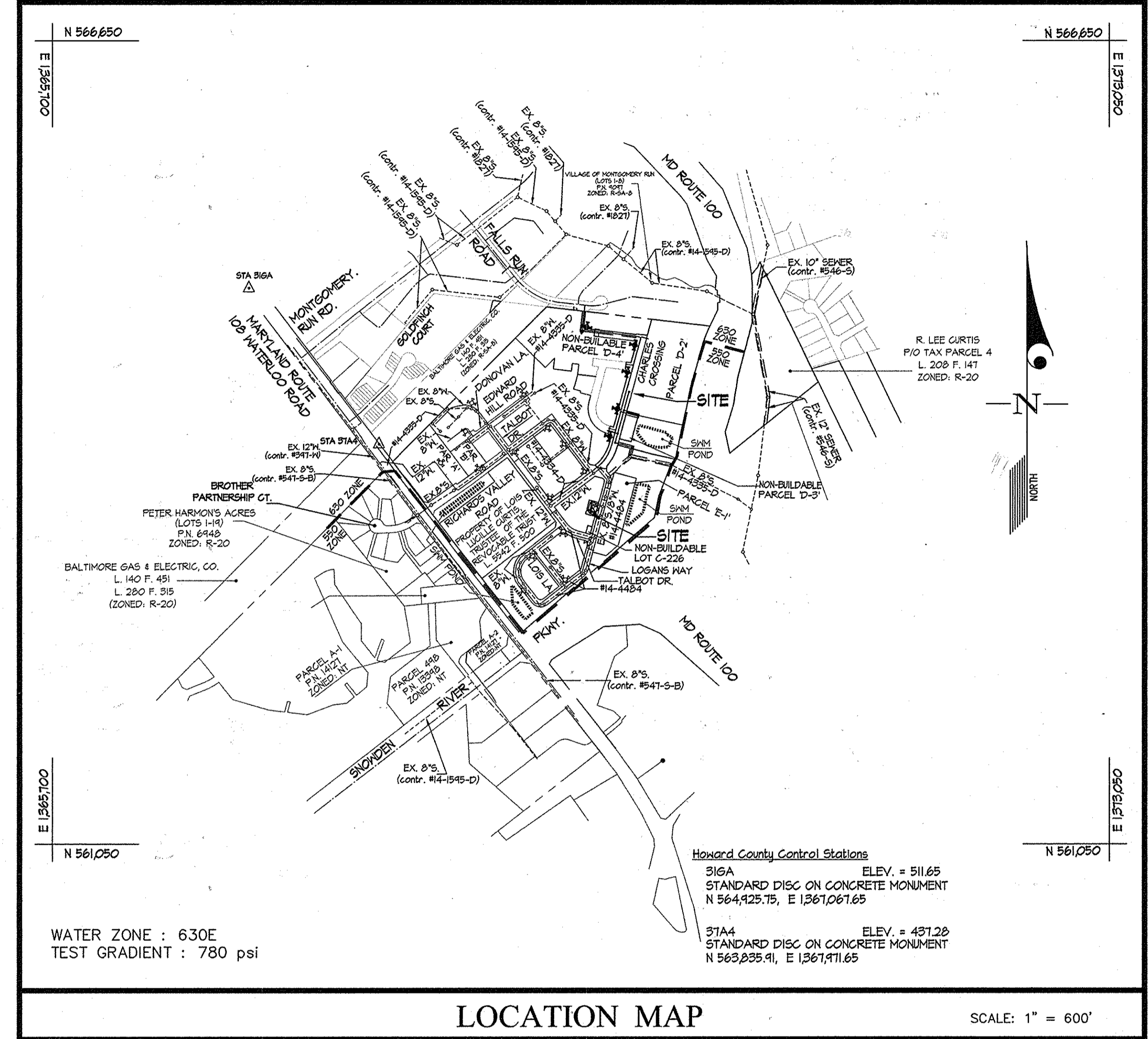
SURVEY AND DRAFTING DIV. CHECKBOX: AS-BUILT DATE: _____

NOTES:
 1. ALL WATER HOUSE CONNECTIONS TO BE 1" WITH A 3/4" INSIDE METER, UNLESS NOTED OTHERWISE, SEE HO. CO. STD. DETAIL W. 3.21.



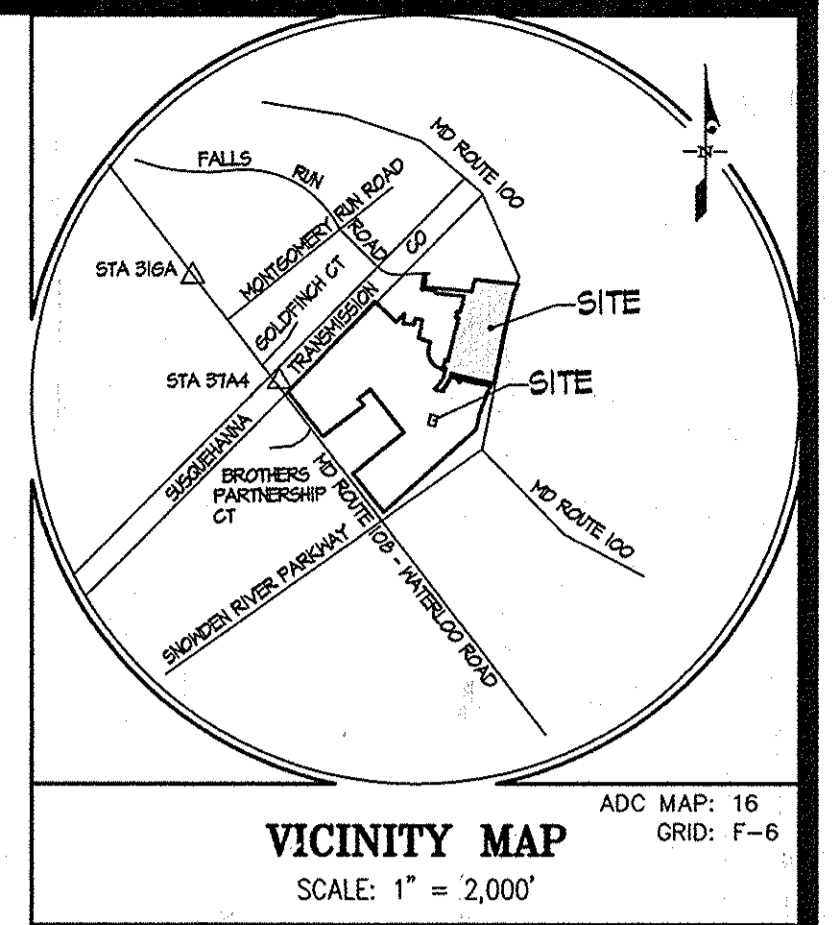
SHEET INDEX
 1) TITLE SHEET
 2) WATER AND SEWER EXTENSION PLAN
 3) WATER AND SEWER EXTENSION PROFILES
 4) WATER AND SEWER EXTENSION PROFILES

NOTE:
 1) NON-BUILDABLE PARCEL D-3 SHOWN AS FUTURE LOTS D-124 THRU D-129 FOR PLANNING PURPOSES.
 2) NON-BUILDABLE PARCEL D-4 IS SHOWN AS FUTURE LOTS D-5 THRU D-62, D-81 THRU D-123 & PARCEL D-80 FOR PLANNING PURPOSES.
 3) WATER & SEWER SERVICE FOR LOTS C-219 THRU C-222, C-202 THRU C-204, C-224 THRU C-226, C-228 THRU C-230, C-232 THRU C-234 & PARCEL "E-4" ARE PROVIDED BY CONTRACT NO. 14-4484-D.



LOCATION MAP SCALE: 1" = 600'

TYPE OF BUILDING	RESIDENTIAL/BULK PARCEL
NUMBER OF UNITS	21-4" SHC's
NUMBER OF S.H.C.'s	21-4" SHC's
NUMBER OF W.H.C.'s	22-1" MHC's
AREA OF COMMERCIAL LOT/PARCEL	6.6 ac.
SEWER SHED	DORSEY - PATAPSCO
PUMPING STATION	PATAPSCO WASTEWATER TREATMENT PLANT



- GENERAL NOTES**
- APPROXIMATE LOCATIONS OF EXISTING MAINS ARE SHOWN. THE CONTRACTOR SHALL TAKE ALL NECESSARY PRECAUTIONS TO PROTECT EXISTING MAINS AND SERVICES AND MAINTAIN UNINTERRUPTED SERVICE. ANY DAMAGE INCURRED SHALL BE REPAIRED IMMEDIATELY TO THE SATISFACTION OF THE ENGINEER AT THE CONTRACTOR'S EXPENSE.
 - TOPOGRAPHY INDICATED HAS BEEN TAKEN FROM AERIAL TOPOGRAPHY PREPARED DURING MARCH 1991 BY SDI.
 - HORIZONTAL AND VERTICAL SURVEY CONTROLS: THE COORDINATES SHOWN ON THE DRAWINGS ARE BASED ON MARYLAND STATE REFERENCE SYSTEM NAD '83/91 AS PROJECTED BY HOWARD COUNTY GEODETIC CONTROL STATIONS No. 468C AND No. 468D.
 - ALL VERTICAL CONTROLS ARE BASED ON NAVD '88. VERTICAL CONTROLS PROVIDED ON DRAWINGS ARE STANDARD DISCS ON CONCRETE MONUMENTS.
 - ALL PIPE ELEVATIONS SHOWN ARE INVERT ELEVATIONS UNLESS OTHERWISE NOTED ON THE PLANS.
 - CLEAR ALL UTILITIES BY A MINIMUM OF 12 INCHES. CLEAR ALL POLES BY 5'-0" MINIMUM OR TUNNEL AS REQUIRED UNLESS OTHERWISE NOTED. THE OWNER HAS CONTACTED THE UTILITY COMPANIES AND HAS MADE ARRANGEMENTS FOR BRACING OF POLES AS SHOWN ON THE DRAWINGS. IN THE EVENT THE CONTRACTOR'S WORK REQUIRES BRACING OF ADDITIONAL POLES, ANY COST INCURRED BY THE OWNER FOR THE BRACING OF ADDITIONAL POLES OR DAMAGES SHALL BE DEDUCTED FROM MONIES OWED THE CONTRACTOR. THE CONTRACTOR SHALL COORDINATE WITH THE UTILITY COMPANIES TO SCHEDULE THE BRACING OF THE POLES.
 - FOR DETAILS NOT SHOWN ON THE DRAWING, AND FOR MATERIALS AND CONSTRUCTION METHODS, USE HOWARD COUNTY DESIGN MANUAL, VOLUME IV, STANDARD SPECIFICATIONS AND DETAILS FOR CONSTRUCTION (LATEST EDITION). THE CONTRACTOR SHALL HAVE A COPY OF VOLUME IV ON THE JOB.
 - WHERE TEST PITS HAVE BEEN MADE ON EXISTING UTILITIES, THEY ARE NOTED BY THE SYMBOL AT THE LOCATIONS OF THE TEST PITS. A NOTE OR NOTES CONTAINING THE RESULTS OF THE TEST PIT OR PITS IS INCLUDED ON THE DRAWINGS. EXISTING UTILITIES IN THE VICINITY OF THE PROPOSED WORK FOR WHICH TEST PITS HAVE NOT BEEN DUG SHALL BE LOCATED BY THE CONTRACTOR TWO WEEKS IN ADVANCE OF CONSTRUCTION OPERATIONS AT HIS OWN EXPENSE.
 - THE CONTRACTOR SHALL NOTIFY THE FOLLOWING UTILITY COMPANIES OR AGENCIES AT LEAST FIVE WORKING DAYS BEFORE STARTING WORK ON THESE PLANS:

AT&T	1-800-252-1133
BGE (CONTRACTOR SERVICES)	410-850-4620
BGE (UNDER GROUND DAMAGE CONTROL)	410-685-1400
BUREAU OF UTILITIES	410-313-4400
COLONIAL PIPELINE CO.	410-745-1340
MISS UTILITY	1-800-251-7777
STATE HIGHWAY ADMINISTRATION	410-531-5533
VERIZON	1-800-743-0033 / 410-224-4210
 - TREES AND SHRUBS ARE TO BE PROTECTED FROM DAMAGE TO THE MAXIMUM EXTENT. TREES AND SHRUBS LOCATED WITHIN THE CONSTRUCTION AREA STRIP ARE NOT TO BE REMOVED OR DAMAGED BY THE CONTRACTOR.
 - THE CONTRACTOR SHALL REMOVE TREES, STUMPS AND ROOTS ALONG THE LINE OF EXCAVATION. PAYMENT FOR SUCH REMOVAL SHALL BE INCLUDED IN THE UNIT PRICE BID FOR CONSTRUCTION OF THE MAIN.
 - THE CONTRACTOR SHALL NOTIFY THE BUREAU OF HIGHWAYS, HOWARD COUNTY, AT (410)-313-1450 AT LEAST FIVE WORKING DAYS BEFORE OPEN CUTTING OR BORING/JACKING OF ANY COUNTY ROAD FOR LAYING WATER/SEWER MAINS OR HOUSE CONNECTIONS. THE APPROVAL OF THESE DRAWINGS WILL CONSTITUTE COMPLIANCE WITH DFN REQUIREMENTS PER SECTION 8.114(a) OF THE HOWARD COUNTY CODE.

CONTRACT No. 14-4513-D
SHIPLEY'S GRANT - PHASE IV
 ▲▲ Lots C-219 thru C-222, C-202 thru C-204, C-224 thru C-226 & C-228 thru C-234
 ▲▲ Parcel "D-2" & "E-4", Open Space Lot C-245, & Parcel "D-1" and Non-Buildable Parcel "D-3" & "D-4"
HOWARD COUNTY, MARYLAND
DEPARTMENT OF PUBLIC WORKS

SEDIMENT CONTROL MEASURES WILL BE IMPLEMENTED IN ACCORDANCE WITH THE SPECIFICATIONS & SITE DRAWINGS F 09-088; DRAWINGS FOR SEDIMENT & EROSION CONTROL.

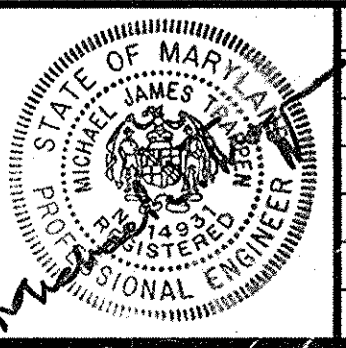
THIS DEVELOPMENT PLAN IS APPROVED FOR SOIL EROSION AND SEDIMENT CONTROL BY THE HOWARD COUNTY SOIL CONSERVATION DISTRICT.
 APPROVED: *[Signature]* 10/15/09
 HOWARD S.C.D. Date

DEPARTMENT OF PUBLIC WORKS
 HOWARD COUNTY, MARYLAND
 CHIEF, BUREAU OF UTILITIES
 DATE: 10/15/09

DEPARTMENT OF PLANNING AND ZONING
 HOWARD COUNTY, MARYLAND
 CHIEF, DEVELOPMENT ENGINEERING DIVISION
 DATE: 10-20-09

GLWGUTSCHICK LITTLE & WEBER, P.A.
 CIVIL ENGINEERS, LAND SURVEYORS, LAND PLANNERS, LANDSCAPE ARCHITECTS
 3909 NATIONAL DRIVE - SUITE 250 - BURTONSVILLE OFFICE PARK
 BURTONSVILLE, MARYLAND 20886
 TEL: 301-421-4024 BAL: 410-880-1820 DC/WA: 301-989-2524 FAX: 301-421-4186

PROFESSIONAL CERTIFICATION
 I HEREBY CERTIFY THAT THESE PLANS WERE PREPARED OR APPROVED BY ME, AND THAT I AM A DULY LICENSED PROFESSIONAL ENGINEER UNDER THE LAWS OF THE STATE OF MARYLAND, LICENSE NO. 14931
 EXP. DATE: MAY, 2012



BY	NO	REVISION	DATE
WJL	1	Update Lot Information	4/20/11
WJL	2	Update Quantities Box & House Conn. Tab	1/24/11
WJL	3	Update Lot No's Per Plat F 10-000	7/10/10

TITLE SHEET
 600' SCALE MAP NO. 37 BLOCK NO.1 & 2
 ZONING: R-A-15

SHIPLEY'S GRANT - PHASE 4
 ▲▲ Lots C-219 thru C-222, C-202 thru C-204, C-224 thru C-226 & C-228 thru C-234
 ▲▲ Parcel "D-2" & "E-4", Open Space Lot C-245, & Parcel "D-1" and Non-Buildable Parcel "D-3" & "D-4"
 HOWARD COUNTY, MARYLAND
 ELECTION DISTRICT No. 1
 CONTRACT No. 14-4513-D TAX MAP: 37 B-1

SCALE AS SHOWN
 SHEET 1 OF 4

L:\CAD\DRAWINGS\03009\PHASE IV\04-PUB-WAT-SEW\FINAL W&S\03009-FWS-04-C5.dwg
 PLOTTED 9/16/2009 4:38 PM. LAST SAVED: 9/16/2009 3:32 PM. PLOTTED BY: Mike Trosper

WATER FITTING LOCATIONS CHARLES CROSSING			
FITTING No.	FITTING TYPE	NAD '83/MI COORDINATES	
		NORTH STATION	EAST OFFSET
1	12"x6" FHT	6+72	10' LEFT
2	FIRE HYDRANT	6+72	23' LEFT
3	12"x8" TEE	7+31	10' LEFT
4	8" CAP	N 563.941	E 1364.865
5	12"x8" TEE	8+64	10' LEFT
6	8" CAP	N 564.024	E 1364.114
7	12"x6" FHT	8+77	10' LEFT
8	FIRE HYDRANT	8+77	23' LEFT
9	12"x6" FHT	11+43	10' LEFT
10	FIRE HYDRANT	11+43	23' LEFT
11	12"x8" TEE	11+44	10' LEFT
12	8" CAP	N 564.941	E 1364.616
13	12"x6" FHT	13+37	10' LEFT
14	FIRE HYDRANT	13+37	23' LEFT
15	12" 1/2" HB	13+41	4.3' RIGHT
16	12"x8" TEE	13+44	10.1' RIGHT
17	8" 1/2" HB	13+42	2.1' RIGHT
18	8" CAP	N 564.511	E 1364.242
19	12" 1/2" HB	13+46	11.1' RIGHT
20	12" 1/2" HB	14+02	11.3' RIGHT

WATER FITTING LOCATIONS DUNCAN DRIVE			
FITTING No.	FITTING TYPE	NAD '83/MI COORDINATES	
		NORTH STATION	EAST OFFSET
21	12"x6" FHT	6+31	10.0' RIGHT
22	FIRE HYDRANT	6+31	20.1' RIGHT
23	8" CAP	5+87	5.8' RIGHT
24	12"x8" REDUCER	5+47	10.0' RIGHT
25	12"x12" T.	6+02	10.0' RIGHT
26	12"x12" T.S.V.	N 564.201	E 1364.401

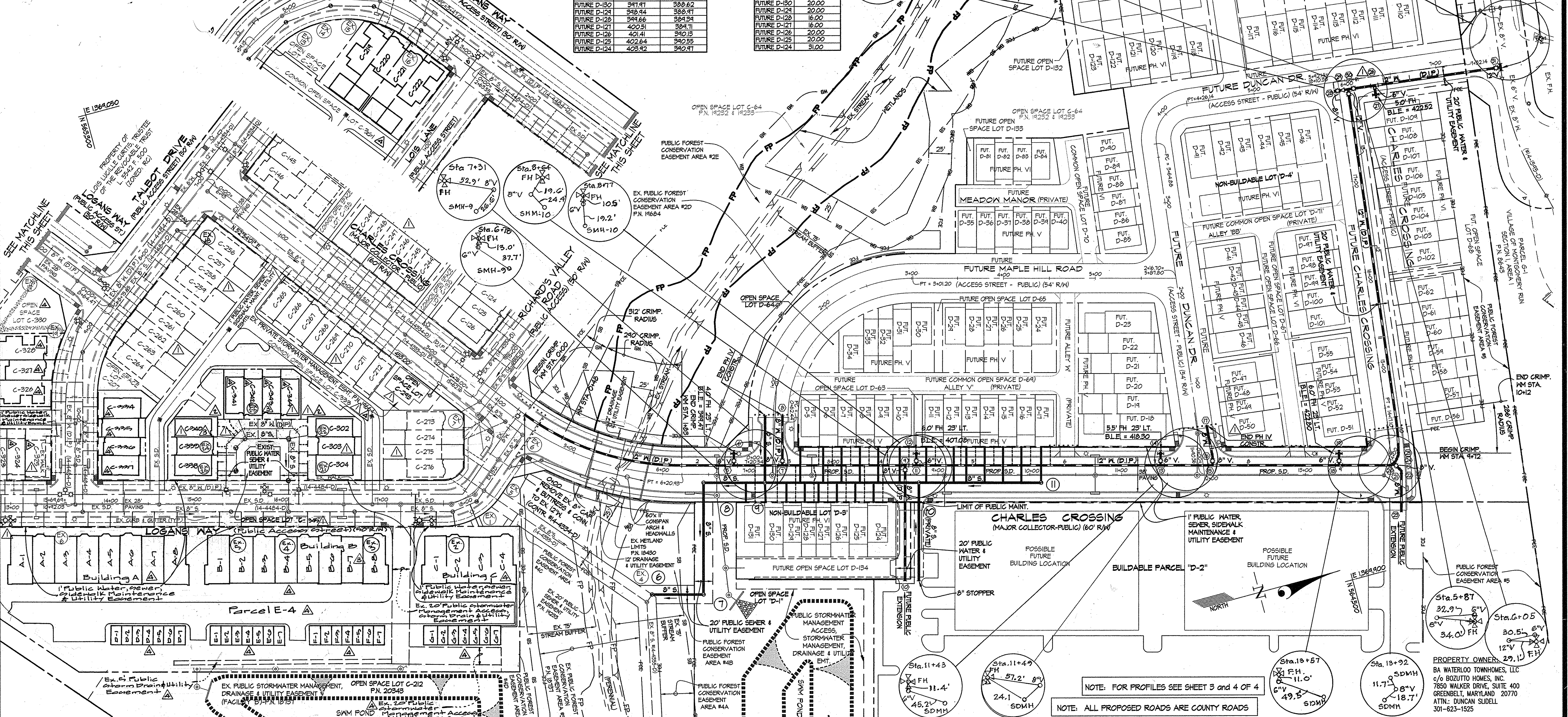
MINIMUM CELLAR ELEVATIONS		
LOT NO.	ELEVATION	INV. @ R/W/ESMT. ELEVATION

CHARLES CROSSING			
FUTURE D-5	344.00	384.65	
FUTURE D-6	400.10	340.11	
FUTURE D-7	400.86	340.54	
FUTURE D-8	401.81	341.01	
FUTURE D-9	402.47	341.43	
FUTURE D-10	404.12	341.82	
FUTURE D-11	405.57	341.14	
FUTURE D-12	407.02	342.44	
FUTURE D-13	407.10	342.55	
FUTURE D-14	408.75	340.55	
FUTURE D-15	408.74	341.15	
FUTURE D-16	402.84	340.95	
FUTURE D-17	411.21	342.74	
FUTURE D-18	346.25	387.60	
FUTURE D-19	347.47	388.62	
FUTURE D-20	348.44	388.47	
FUTURE D-21	344.66	384.34	
FUTURE D-22	400.23	384.11	
FUTURE D-23	401.41	380.19	
FUTURE D-24	402.64	340.55	
FUTURE D-25	403.92	340.91	

LOT FRONTAGE TABLE	
LOT No.	DISTANCE (feet)

CHARLES CROSSING	
FUTURE D-26	29.44
FUTURE D-27	20.00
FUTURE D-28	20.00
FUTURE D-29	20.00
FUTURE D-30	20.00
FUTURE D-31	20.00
FUTURE D-32	20.00
FUTURE D-33	20.00
FUTURE D-34	20.00
FUTURE D-35	20.00
FUTURE D-36	20.00
FUTURE D-37	20.00
FUTURE D-38	20.00
FUTURE D-39	20.00
FUTURE D-40	20.00
FUTURE D-41	20.00
FUTURE D-42	20.00
FUTURE D-43	20.00
FUTURE D-44	20.00
FUTURE D-45	20.00
FUTURE D-46	20.00
FUTURE D-47	20.00
FUTURE D-48	20.00
FUTURE D-49	20.00
FUTURE D-50	20.00
FUTURE D-51	20.00
FUTURE D-52	20.00
FUTURE D-53	20.00
FUTURE D-54	20.00
FUTURE D-55	20.00
FUTURE D-56	20.00
FUTURE D-57	20.00
FUTURE D-58	20.00
FUTURE D-59	20.00
FUTURE D-60	20.00
FUTURE D-61	20.00
FUTURE D-62	20.00
FUTURE D-63	20.00
FUTURE D-64	20.00
FUTURE D-65	20.00
FUTURE D-66	20.00
FUTURE D-67	20.00
FUTURE D-68	20.00
FUTURE D-69	20.00
FUTURE D-70	20.00
FUTURE D-71	20.00
FUTURE D-72	20.00
FUTURE D-73	20.00
FUTURE D-74	20.00
FUTURE D-75	20.00
FUTURE D-76	20.00
FUTURE D-77	20.00
FUTURE D-78	20.00
FUTURE D-79	20.00
FUTURE D-80	20.00
FUTURE D-81	20.00
FUTURE D-82	20.00
FUTURE D-83	20.00
FUTURE D-84	20.00
FUTURE D-85	20.00
FUTURE D-86	20.00
FUTURE D-87	20.00
FUTURE D-88	20.00
FUTURE D-89	20.00
FUTURE D-90	20.00
FUTURE D-91	20.00
FUTURE D-92	20.00
FUTURE D-93	20.00
FUTURE D-94	20.00
FUTURE D-95	20.00
FUTURE D-96	20.00
FUTURE D-97	20.00
FUTURE D-98	20.00
FUTURE D-99	20.00
FUTURE D-100	20.00
FUTURE D-101	20.00
FUTURE D-102	20.00
FUTURE D-103	20.00
FUTURE D-104	20.00
FUTURE D-105	20.00
FUTURE D-106	20.00
FUTURE D-107	20.00
FUTURE D-108	20.00
FUTURE D-109	20.00
FUTURE D-110	20.00
FUTURE D-111	20.00
FUTURE D-112	20.00
FUTURE D-113	20.00
FUTURE D-114	20.00
FUTURE D-115	20.00
FUTURE D-116	20.00
FUTURE D-117	20.00
FUTURE D-118	20.00
FUTURE D-119	20.00
FUTURE D-120	20.00
FUTURE D-121	20.00
FUTURE D-122	20.00
FUTURE D-123	20.00
FUTURE D-124	20.00
FUTURE D-125	20.00
FUTURE D-126	20.00
FUTURE D-127	20.00
FUTURE D-128	20.00
FUTURE D-129	20.00
FUTURE D-130	20.00
FUTURE D-131	20.00
FUTURE D-132	20.00
FUTURE D-133	20.00
FUTURE D-134	20.00
FUTURE D-135	20.00
FUTURE D-136	20.00
FUTURE D-137	20.00
FUTURE D-138	20.00
FUTURE D-139	20.00
FUTURE D-140	20.00
FUTURE D-141	20.00
FUTURE D-142	20.00
FUTURE D-143	20.00
FUTURE D-144	20.00
FUTURE D-145	20.00
FUTURE D-146	20.00
FUTURE D-147	20.00
FUTURE D-148	20.00
FUTURE D-149	20.00
FUTURE D-150	20.00
FUTURE D-151	20.00
FUTURE D-152	20.00
FUTURE D-153	20.00
FUTURE D-154	20.00
FUTURE D-155	20.00
FUTURE D-156	20.00
FUTURE D-157	20.00
FUTURE D-158	20.00
FUTURE D-159	20.00
FUTURE D-160	20.00
FUTURE D-161	20.00
FUTURE D-162	20.00
FUTURE D-163	20.00
FUTURE D-164	20.00
FUTURE D-165	20.00
FUTURE D-166	20.00
FUTURE D-167	20.00
FUTURE D-168	20.00
FUTURE D-169	20.00
FUTURE D-170	20.00
FUTURE D-171	20.00
FUTURE D-172	20.00
FUTURE D-173	20.00
FUTURE D-174	20.00
FUTURE D-175	20.00
FUTURE D-176	20.00
FUTURE D-177	20.00
FUTURE D-178	20.00
FUTURE D-179	20.00
FUTURE D-180	20.00
FUTURE D-181	20.00
FUTURE D-182	20.00
FUTURE D-183	20.00
FUTURE D-184	20.00
FUTURE D-185	20.00
FUTURE D-186	20.00
FUTURE D-187	20.00
FUTURE D-188	20.00
FUTURE D-189	20.00
FUTURE D-190	20.00
FUTURE D-191	20.00
FUTURE D-192	20.00
FUTURE D-193	20.00
FUTURE D-194	20.00
FUTURE D-195	20.00
FUTURE D-196	20.00
FUTURE D-197	20.00
FUTURE D-198	20.00
FUTURE D-199	20.00
FUTURE D-200	20.00

SEWER MANHOLE LOCATIONS			
MH No.	NAD '83/MI COORDINATES		ELEVATION
	NORTH STATION	EAST OFFSET	
6	N 563.754	E 1364.117	
7	N 563.213	E 1364.731	
8	6+45	4.0' RIGHT	
9	7+12	4.0' RIGHT	
10	8+74	4.0' RIGHT	
11	10+12	4.0' RIGHT	



NOTE: FOR PROFILES SEE SHEET 3 AND 4 OF 4
 NOTE: ALL PROPOSED ROADS ARE COUNTY ROADS

DEPARTMENT OF PUBLIC WORKS
 HOWARD COUNTY, MARYLAND
 Chief, Bureau of Utilities
 DATE: 7-30-10

DEPARTMENT OF PLANNING AND ZONING
 HOWARD COUNTY, MARYLAND
 Chief, Development Engineering Division
 DATE: 7-30-10

GLWGUTSCHICK LITTLE & WEBER, P.A.
 CIVIL ENGINEERS, LAND SURVEYORS, LAND PLANNERS, LANDSCAPE ARCHITECTS
 3909 NATIONAL DRIVE - SUITE 250 - BURTONVILLE OFFICE PARK
 BURTONVILLE, MARYLAND 20866
 TEL: 301-421-4024 FAX: 301-421-4196

DATE: JULY, 2010
 PROFESSIONAL CERTIFICATION
 I HEREBY CERTIFY THAT THESE PLANS WERE PREPARED OR APPROVED BY ME, AND THAT I AM A DULY LICENSED PROFESSIONAL ENGINEER UNDER THE LAWS OF THE STATE OF MARYLAND, LICENSE NO. 14531
 EXP. DATE: MAY, 2012
 Michael J. Taylor

BY	NO	REVISION	DATE
WWS	1	Update Lot Information	4/20/11
WWS	2	Per local Mains Service to Lots C-275 thru C-284	11/24/11
WWS	3	Rev. Home Comm on MH 249	10/10/10
MJT	4	UPDATE LOT NO'S PER PLAT F 10-040 AND ADJ. CONNS	7/12/10

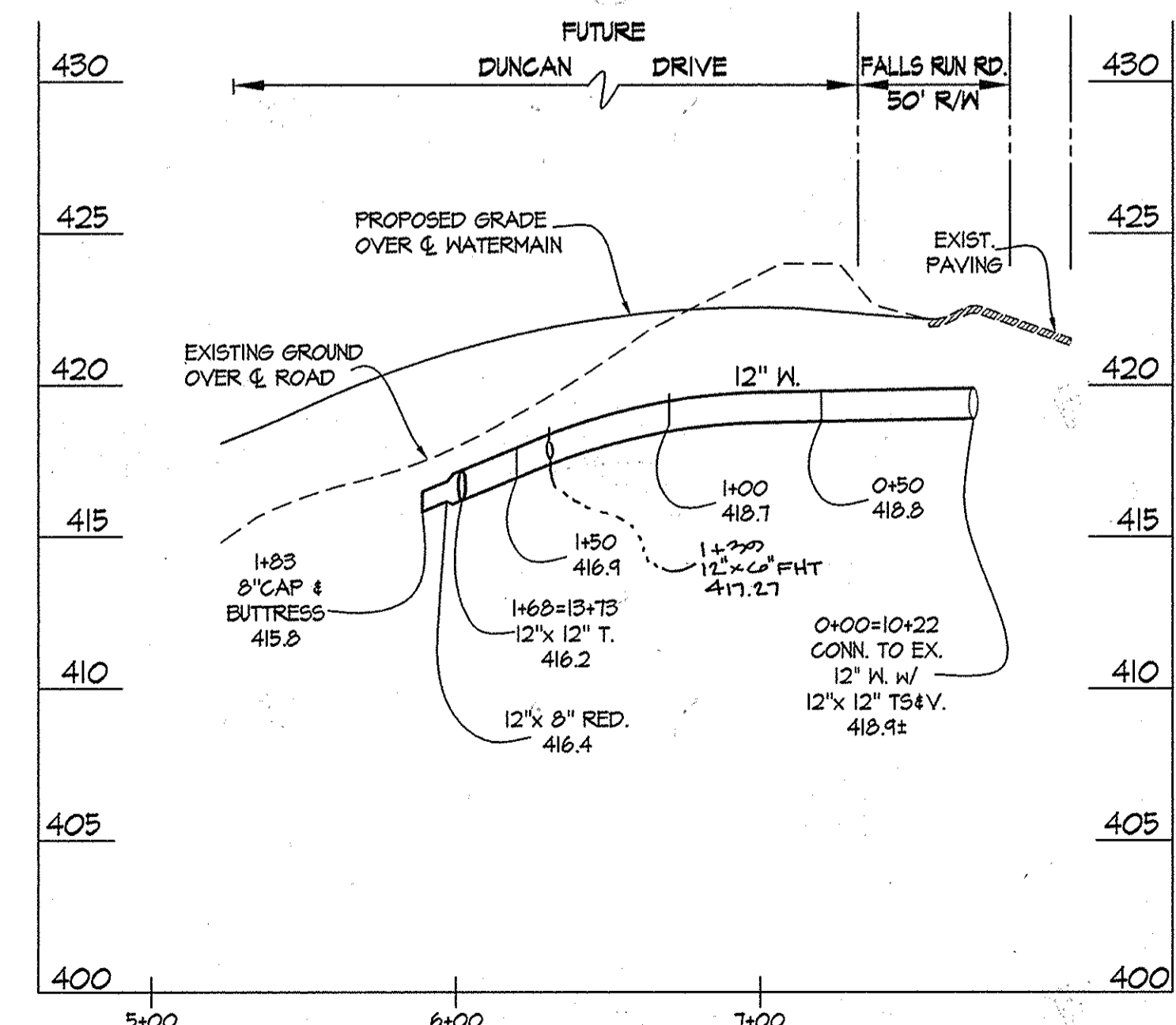
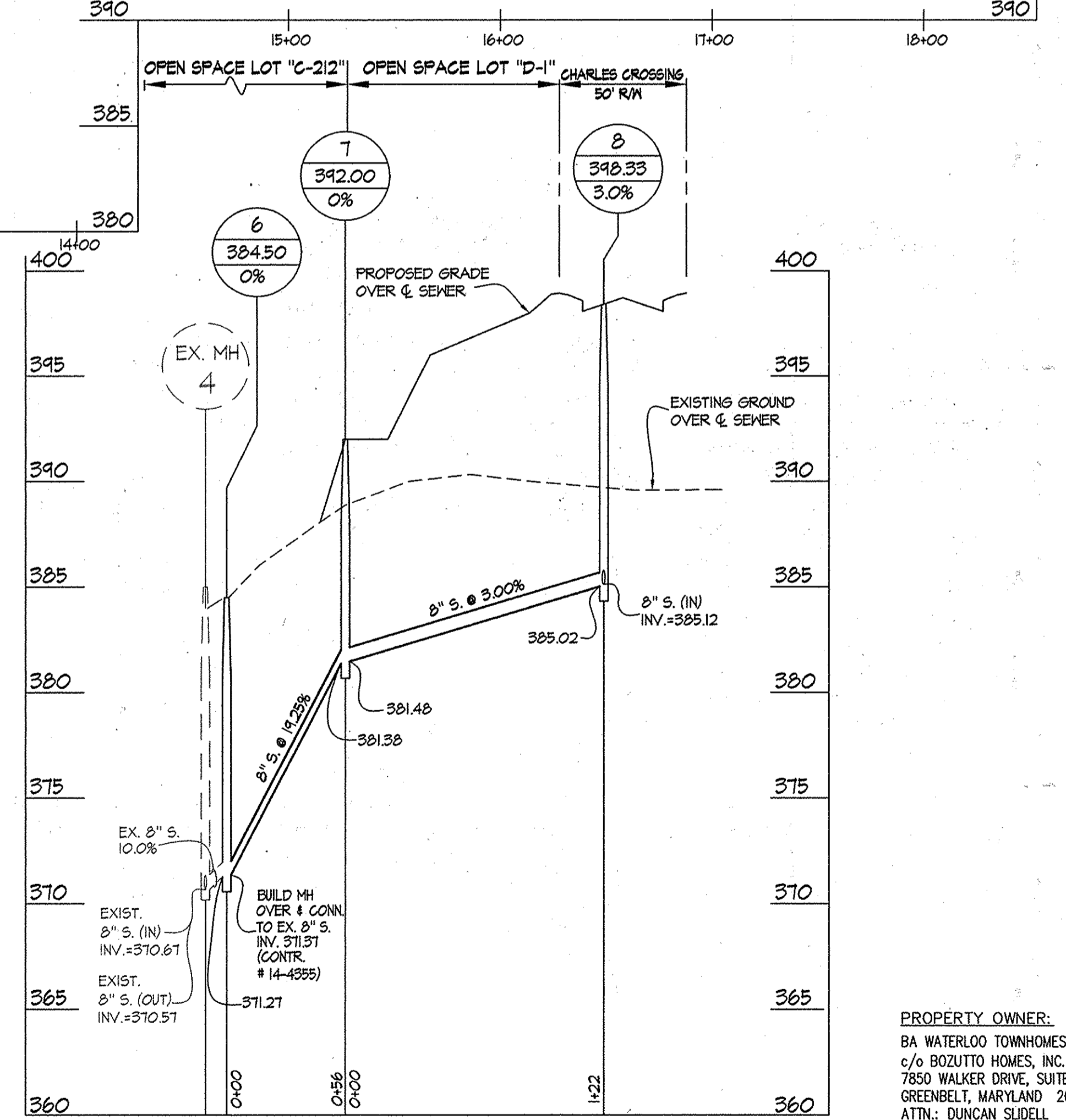
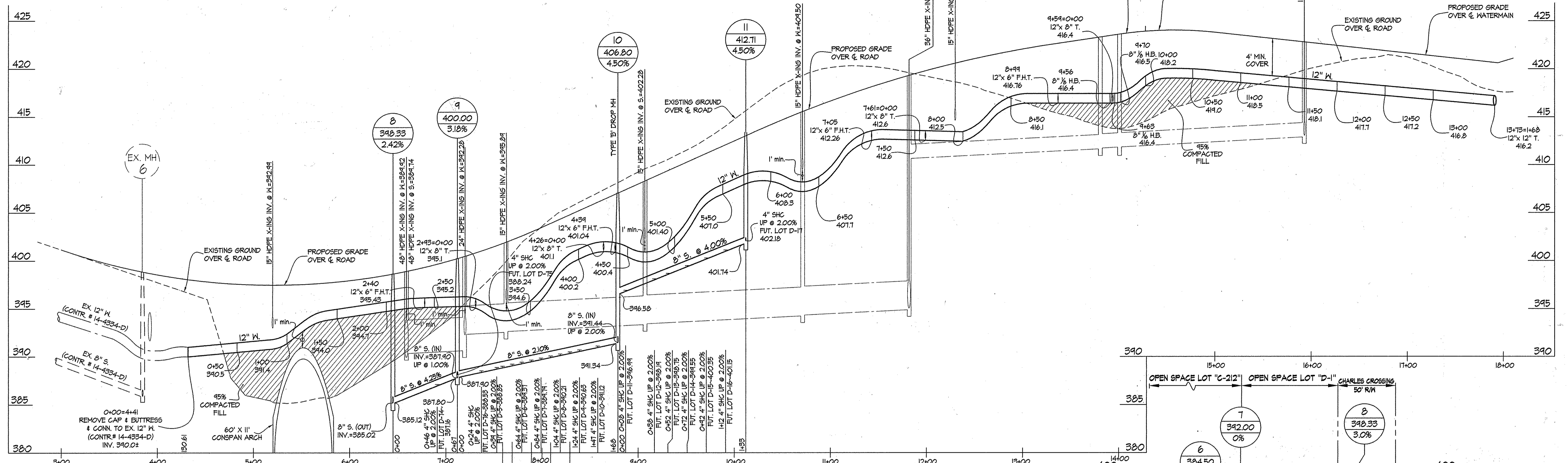
REVISOR
 WATER and SEWER EXTENSION PLAN
 600' SCALE MAP NO. 37 BLOCK NO.1 & 2

SHIPLEY'S GRANT - PHASE 4
 Lots C-210 thru C-222, C-202 thru C-204, C-234 thru C-236 & E-4, Open Space Lots C-244, Parcel D-2, D-3 & E-4, Open Space Lots C-244, D-1 and Non-Buildable Parcel D-2, D-3 & D-4
 HOWARD COUNTY, MARYLAND ELECTION DISTRICT No. 1
 CONTRACT No. 14-4513-D TAX MAP: 37 B-1

SCALE: 1" = 50'
 SHEET: 2 OF 4

L:\CADD\DRAWINGS\030000\PHASE 4\GWA-PUB-WAT-SEW\FINAL WGA\Revised\Replacement_Sheet_2\030000-FWS-04-BLAN-R1.dwg
 PLOTTED: 7/13/2010 11:53 AM, LAST SAVED: 7/13/2010 11:48 AM, PLOTTED BY: Mike Troppan

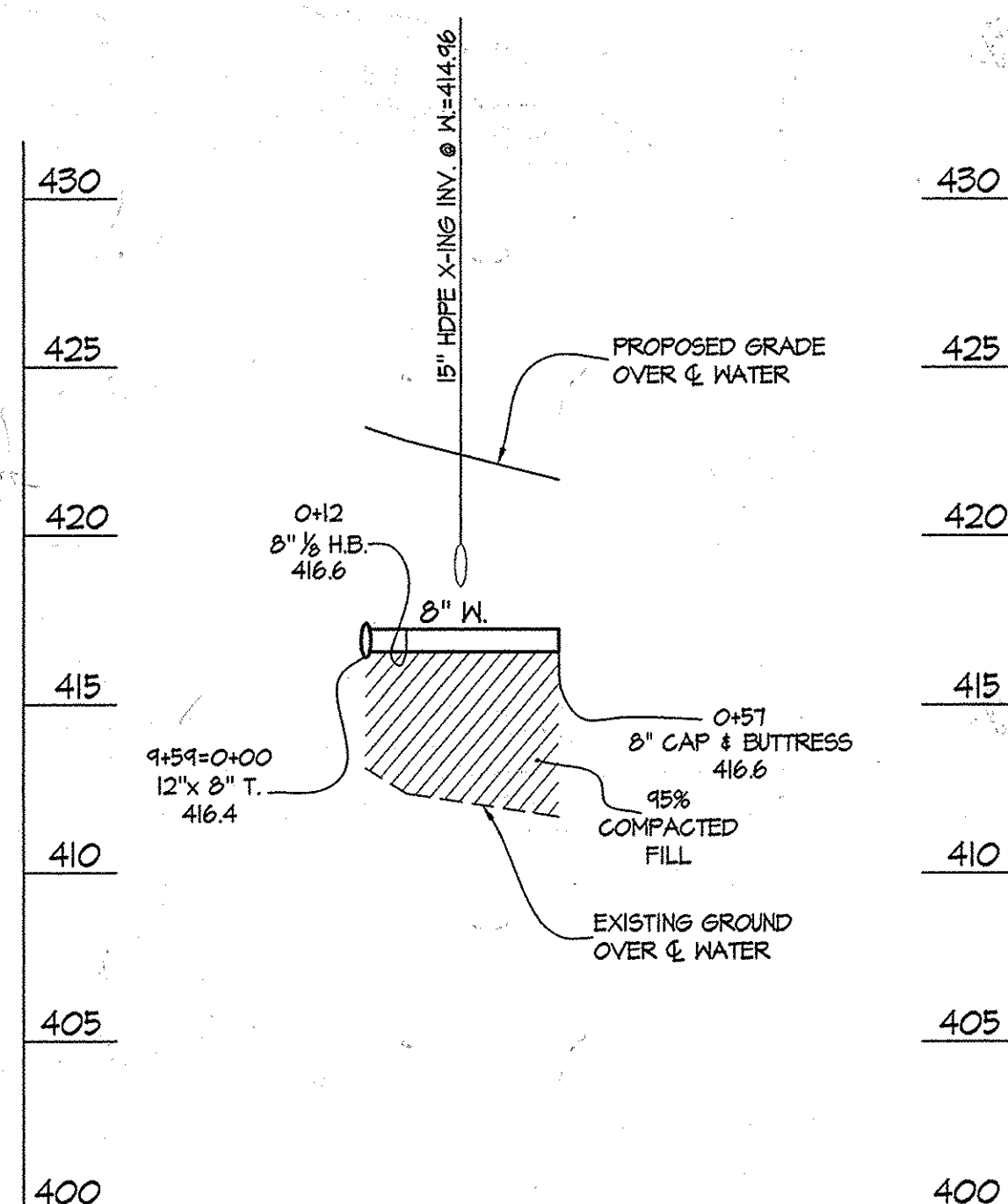
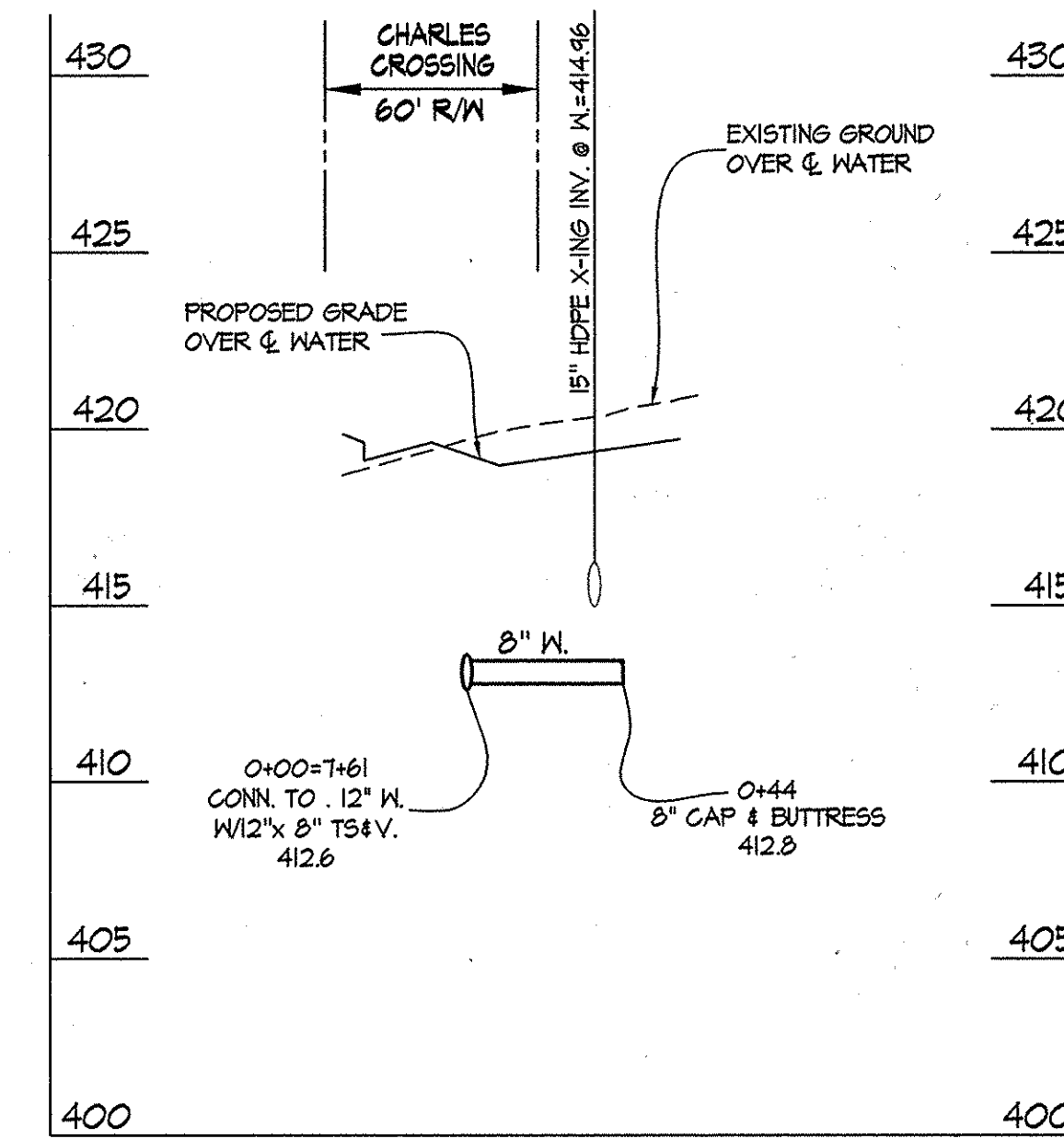
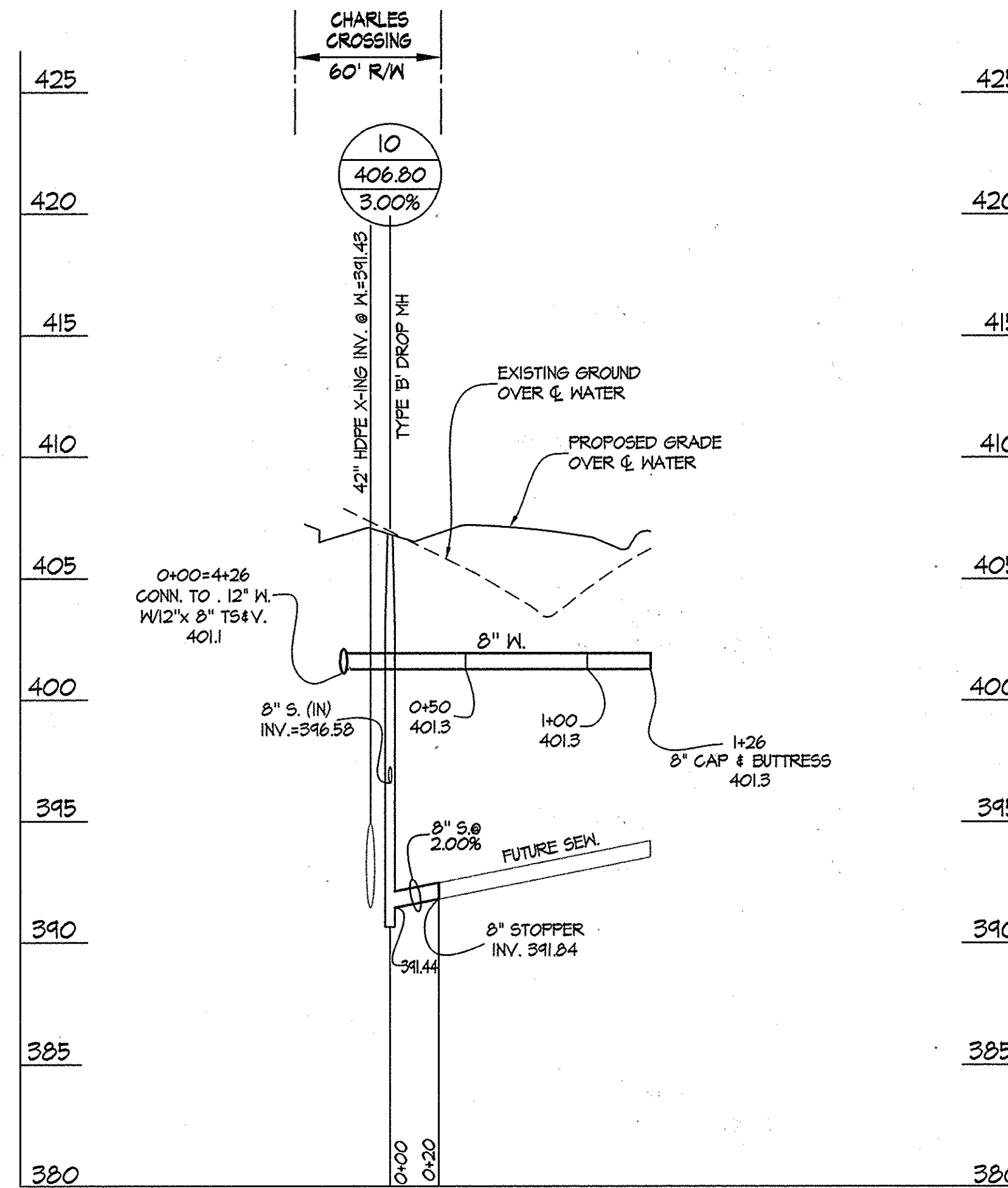
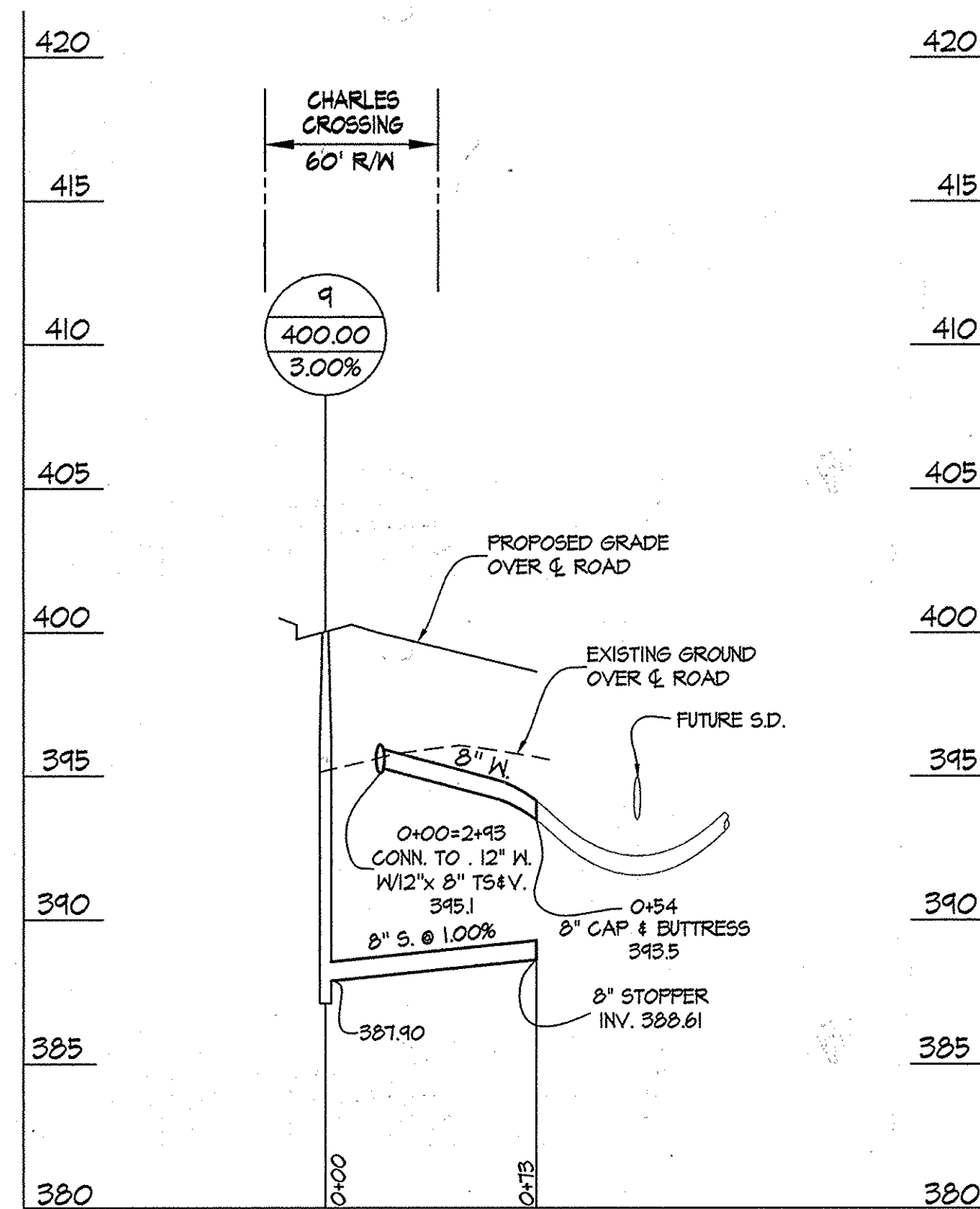
FOR PLAN VIEW SEE SHEET 2 OF 3



PROPERTY OWNER:
BA WATERLOO TOWNHOMES, LLC
c/o BOZUTTO HOMES, INC.
7850 WALKER DRIVE, SUITE 400
GREENBELT, MARYLAND 20770
ATTN: DUNCAN SUDLETT
301-623-1525

L:\CADD\PROJECTS\2010\14-4513-D\14-4513-D-01.dwg
 PLOTTED: 9/16/2010 4:55 PM LAST SAVED: 9/16/2010 12:38 PM PLOTTED BY: Mike Tropp

DEPARTMENT OF PUBLIC WORKS HOWARD COUNTY, MARYLAND Chief, Bureau of Utilities Date: 12/10/11	DEPARTMENT OF PLANNING AND ZONING HOWARD COUNTY, MARYLAND Chief, Development Engineering Division Date: 10/20/11	GLWGUTSCHICK LITTLE & WEBER, P.A. CIVIL ENGINEERS, LAND SURVEYORS, LAND PLANNERS, LANDSCAPE ARCHITECTS 3809 NATIONAL DRIVE - SUITE 250 - BURTONSVILLE OFFICE PARK BURTONSVILLE, MARYLAND 20886 TEL: 301-421-4024 BALT: 410-880-1820 DC/VA: 301-389-2524 FAX: 301-421-4188	DATE: June, 2010	PROFESSIONAL CERTIFICATION I HEREBY CERTIFY THAT THESE PLANS WERE PREPARED OR APPROVED BY ME, AND THAT I AM A DULY LICENSED PROFESSIONAL ENGINEER UNDER THE LAWS OF THE STATE OF MARYLAND, LICENSE NO. 14931 EXP. DATE: MAY, 2012	STATE OF MARYLAND PROFESSIONAL ENGINEER MICHAEL JAMES WEBER LICENSE NO. 14931	Update Lot Information 4/20/11	WATER & SEWER PROFILES 600' SCALE MAP NO. 37 BLOCK NO.1 & 2 ZONING: R-A-15 CONTRACT No. 14-4513-D TAX MAP: 37 B-1	SHEET 3 OF 4
			G.L.W. No. 03006			Update Main Service Lot 14-4513 thru 14-4514 1/24/11		



AS BUILT INFORMATION					
LOT #	ADDRESS	WATER HOUSE CONNECTION AS BUILT		SEWER HOUSE CONNECTION AS BUILT	
		LOCATION DIM. 1	LOCATION DIM. 2	LOCATION DIM. 1	LOCATION DIM. 2
5	Charles Crossing	I-22 = 43.2'	MH-6 = 37.2'	SMH-9 = 54.0'	MH-6 = 44.6'
6	Charles Crossing	I-22 = 22.8'	MH-6 = 44.0'	SMH-9 = 74.6'	MH-6 = 64.4'
7	Charles Crossing	I-22 = 12.2'	MH-6 = 59.8'	SMH-9 = 91.7'	MH-6 = 81.6'
8	Charles Crossing	MH-8 = 86.3'	SMH-10 = 65.6'	SMH-9 = 109.0'	MH-6 = 101.0'
9	Charles Crossing	MH-8 = 68.7'	SMH-10 = 51.2'	SMH-9 = 130.0'	MH-6 = 120.0'
10	Charles Crossing	MH-8 = 49.3'	SMH-10 = 39.6'	SMH-10 = 43.5'	MH-8 = 58.0'
11	Charles Crossing	MH-8 = 33.4'	SMH-10 = 41.7'	SMH-10 = 38.5'	MH-8 = 35.4'
12	Charles Crossing	SMH-11 = 97.4'	MH-8 = 36.4'	SMH-10 = 52.5'	MH-8 = 32.7'
13	Charles Crossing	SMH-11 = 82.5'	MH-8 = 46.6'	SMH-10 = 62.5'	MH-8 = 39.6'
14	Charles Crossing	SMH-11 = 65.4'	MH-8 = 62.3'	SMH-10 = 80.0'	MH-8 = 54.0'
15	Charles Crossing	MH-9 = 96.0'	SMH-11 = 50.4'	MH-8 = 71.3'	SMH-11 = 56.5'
16	Charles Crossing	MH-9 = 76.0'	SMH-11 = 40.3'	MH-8 = 90.2'	SMH-11 = 43.5'
17	Charles Crossing	MH-9 = 57.0'	SMH-11 = 40.0'	MH-8 = 111.2'	SMH-11 = 39.2'
124	Charles Crossing	SMH-10 = 46.0'	MH-6 = 87.3'	SMH-9 = 121.0'	MH-6 = 115.0'
125	Charles Crossing	SMH-10 = 04.0'	MH-6 = 68.6'	SMH-9 = 101.0'	MH-6 = 76.0'
126	Charles Crossing	SMH-10 = 83.4'	MH-6 = 50.5'	SMH-9 = 79.7'	MH-6 = 74.6'
127	Charles Crossing	SMH-10 = 103.3'	MH-6 = 35.5'	SMH-9 = 62.3'	MH-6 = 57.7'
128	Charles Crossing	MH-5 = 53.0'	MH-6 = 29.2'	SMH-9 = 49.0'	MH-6 = 45.0'
129	Charles Crossing	MH-5 = 38.0'	MH-6 = 30.0'	SMH-9 = 34.6'	MH-6 = 33.0'
130	Charles Crossing	MH-5 = 27.4'	MH-6 = 41.0'	SMH-9 = 24.6'	MH-6 = 30.0'
131	Charles Crossing	MH-5 = 33.6'	MH-6 = 62.5'	SMH-9 = 32.0'	MH-6 = 41.0'

PROPERTY OWNER:
BA WATERLOO TOWNHOMES, LLC
c/o BOZUTTO HOMES, INC.
7850 WALKER DRIVE, SUITE 400
GREENBELT, MARYLAND 20770
ATTN: DUNCAN SIDELL
301-623-1525

L:\CADD\WORKSPACE\2010\14-4513-D\14-4513-D-01-01-01.dwg, PLOT DATE: 09/16/2009 12:38 PM, PLOTTED BY: Mike Topper

DEPARTMENT OF PUBLIC WORKS HOWARD COUNTY, MARYLAND CHIEF, BUREAU OF UTILITIES	DEPARTMENT OF PLANNING AND ZONING HOWARD COUNTY, MARYLAND CHIEF, DEVELOPMENT ENGINEERING DIVISION	GLWGUTSCHICK LITTLE & WEBBER, P.A. CIVIL ENGINEERS, LAND SURVEYORS, LAND PLANNERS, LANDSCAPE ARCHITECTS 3909 NATIONAL DRIVE - SUITE 250 - BURTONSVILLE OFFICE PARK BURTONSVILLE, MARYLAND 20886 TEL: 301-421-4024 BALT: 410-880-1820 DC/VA: 301-889-2524 FAX: 301-421-4186	DATE: June, 2010 G.L.W. No. 03006 PROFESSIONAL CERTIFICATION I HEREBY CERTIFY THAT THESE PLANS WERE PREPARED OR APPROVED BY ME, AND THAT I AM A DULY LICENSED PROFESSIONAL ENGINEER UNDER THE LAWS OF THE STATE OF MARYLAND, LICENSE NO. 14931 EXP. DATE: MAY, 2012	 JAMES T. WEBB PROFESSIONAL ENGINEER STATE OF MARYLAND LICENSE NO. 14931 EXP. DATE: MAY, 2012	WATER & SEWER PROFILES 600' SCALE MAP NO. 37 BLOCK NO.1 & 2 ZONING: R-A-15 CONTRACT No. 14-4513-D TAX MAP: 37 B-1	SHEET 4 OF 4 SCALE 1" = 50' VERT. 1" = 5' HORIZ.
---	---	---	---	--	---	---