


**GENERAL NOTES**

**PART I**

- APPROXIMATE LOCATION OF EXISTING MAINS ARE SHOWN. THE CONTRACTOR SHALL TAKE ALL NECESSARY PRECAUTIONS TO PROTECT EXISTING MAINS AND SERVICES AND MAINTAIN UNINTERRUPTED SERVICE. ANY DAMAGE INCURRED SHALL BE REPAIRED IMMEDIATELY TO THE SATISFACTION OF THE ENGINEER AT THE CONTRACTOR'S EXPENSE.
- THE TOPOGRAPHY SHOWN HEREON IS BASED ON AN AERIAL SURVEY BY VRM DATED AUGUST 2004.
- HORIZONTAL AND VERTICAL SURVEY CONTROLS:  
THE COORDINATES SHOWN ON THE DRAWINGS ARE BASED ON MARYLAND STATE REFERENCE SYSTEM NAD '83 / 11 AS PROJECTED BY HOWARD COUNTY GEODETIC CONTROL STATIONS 24CA AND 24BA.  
ALL VERTICAL CONTROLS ARE BASED ON (NAVD' 27). VERTICAL CONTROLS PROVIDED ON DRAWINGS ARE:  
GEODETIC SURVEY CONTROL 24CA (N 586506.183/E 1361634.312)  
BRASS DISC SET ON TOP OF A CONCRETE MONUMENT, LOCATED AT INTERSECTION OF ROUTE 40 & ST. JOHN LN, SOUTH OF MOBIL STATION AND 11.5' AWAY FROM INTERSECTION CORNER.  
GEODETIC SURVEY CONTROL 24BA (N 586783.2418/E 1359211.655)  
BRASS DISC SET ON TOP OF A CONCRETE MONUMENT, LOCATED AT NORTH SIDE OF RT.40, 200' EAST OF PLUM TREE DR., 2.4' NORTH FROM FENCE CURB AND 1.6' SOUTH SIDE OF PARKING LOT.
- ALL PIPE ELEVATIONS SHOWN ARE INVERT ELEVATIONS UNLESS OTHERWISE NOTED.
- CLEAR ALL UTILITIES BY A MINIMUM OF 12 INCHES. CLEAR ALL POLES BY 5'-0" MINIMUM OR TUNNEL AS REQUIRED UNLESS OTHERWISE NOTED. THE OWNER HAS CONTACTED THE UTILITY COMPANIES AND HAS MADE ARRANGEMENTS FOR BRACING OF POLES AS SHOWN ON DRAWINGS. IN THE EVENT THE CONTRACTOR'S WORK REQUIRES THE BRACING OF ADDITIONAL POLES, ANY COST INCURRED BY THE OWNER FOR BRACING OF ADDITIONAL POLES OR DAMAGES SHALL BE DEDUCTED FROM MONIES OWED THE CONTRACTOR. THE CONTRACTOR SHALL COORDINATE WITH THE UTILITY COMPANIES TO SCHEDULE THE BRACING OF THE POLES.
- FOR DETAILS NOT SHOWN ON THE DRAWINGS, AND FOR MATERIALS AND CONSTRUCTION METHODS USE, HOWARD COUNTY DESIGN MANUAL, VOLUME IV, STANDARD SPECIFICATIONS AND DETAILS FOR CONSTRUCTION (LATEST EDITION). THE CONTRACTOR SHALL HAVE A COPY OF VOLUME IV ON THE JOB.
- WHERE TEST PITS HAVE BEEN MADE ON EXISTING UTILITIES, THEY ARE NOTED BY THE SYMBOL  AT THE LOCATION OF THE TEST PIT. A NOTES OR NOTES CONTAINING THE RESULTS OF THE TEST PIT OR PITS IS INCLUDED ON THE DRAWINGS. EXISTING UTILITIES IN THE VICINITY OF THE PROPOSED WORK FOR WHICH TEST PITS HAVE NOT BEEN DUG SHALL BE LOCATED BY THE CONTRACTOR TWO WEEKS IN ADVANCE OF CONSTRUCTION OPERATION AT HIS OWN EXPENSE.
- THE CONTRACTOR SHALL NOTIFY THE FOLLOWING UTILITY COMPANIES OR AGENCIES AT LEAST FIVE WORKING DAYS BEFORE STARTING WORK SHOWN THESE PLANS:  
AT & T \_\_\_\_\_ 1-800-252-1133  
BGE (CONTRACTOR SERVICE) \_\_\_\_\_ 410-850-4620  
BGE (EMERGENCY) \_\_\_\_\_ 410-685-1400  
BUREAU OF UTILITIES \_\_\_\_\_ 410-313-4900  
COLONIAL PIPELINE CO \_\_\_\_\_ 410-795-1390  
MISS UTILITY \_\_\_\_\_ 1-800-257-7777  
STATE HIGHWAY ADMINISTRATION \_\_\_\_\_ 410-531-5533  
VERIZON \_\_\_\_\_ 1-800-743-0033/410-224-9210
- TREES AND SHRUBS ARE TO BE PROTECTED FROM DAMAGE TO THE MAXIMUM EXTENT. TREES AND SHRUBS LOCATED WITHIN THE CONSTRUCTION STRIP ARE NOT TO BE REMOVED OR DAMAGED BY THE CONTRACTOR
- THE CONTRACTOR SHALL REMOVE TREES, STUMPS AND ROOTS ALONG THE LINE OF EXCAVATION. PAYMENT FOR SUCH REMOVAL SHALL BE INCLUDED IN THE UNIT PRICE BID FOR THE CONSTRUCTION OF THE MAIN.
- THE CONTRACTOR SHALL NOTIFY THE BUREAU OF HIGHWAYS, HOWARD COUNTY, AT (410) 313-7450 AT LEAST FIVE WORKING DAYS BEFORE ANY OPEN CUTTING OR BORING/JACKING OF ANY COUNTY ROAD FOR LAYING WATER/SEWER MAINS OR HOUSE CONNECTIONS. THE APPROVAL OF THESE DRAWINGS WILL CONSTITUTE COMPLIANCE WITH DPW REQUIREMENTS PER SECTION 18.114(c) OF THE HOWARD COUNTY CODE.

**PART II - WATER**

- ALL WATER MAINS TO BE D.I.P. CLASS 52 UNLESS OTHERWISE NOTED.
- TOPS OF ALL WATER MAINS TO HAVE A MINIMUM OF 3'-6" COVER UNLESS OTHERWISE NOTED.
- VALVES ADJACENT TO TEES SHALL BE STRAPPED TO TEES.
- ALL FITTINGS SHALL BE BUTTRESSED OR ANCHORED WITH CONCRETE IN ACCORDANCE WITH THE STANDARD DETAILS UNLESS OTHERWISE PROVIDED FOR ON THE DRAWINGS.
- FIRE HYDRANTS SHALL BE SET TO THE BURY LINE ELEVATIONS SHOWN ON THE DRAWINGS. ALL FIRE HYDRANTS SHALL BE INSTALLED IN ACCORDANCE WITH STANDARD DETAILS. THE SOIL AROUND THE FIRE HYDRANT SHALL BE COMPACTED IN ACCORDANCE WITH SECTION 1000 AND 1005 OF THE STANDARD SPECIFICATIONS.
- THE CONTRACTOR SHALL NOT OPERATE ANY WATER MAIN VALVES ON THE EXISTING WATER SYSTEM.

**PART III - SEWER**

- ALL SEWER MAINS SHALL BE D.I.P. OR P.V.C UNLESS OTHERWISE NOTED.
- ALL MANHOLES SHALL BE 4'-0" INSIDE DIAMETER UNLESS OTHERWISE NOTED.
- FORCE MAINS SHALL BE D.I.P. ONLY.
- MANHOLES SHOWN WITH 12" AND 16" WALLS ARE FOR BRICK MANHOLES ONLY.
- MANHOLES DESIGNATED W.T. IN PLAN AND PROFILE SHALL HAVE WATERTIGHT FRAME AND COVER, STANDARD DETAIL G5.52. WHERE WATERTIGHT MANHOLE FRAME AND COVERS ARE USED, SET TOP OF FRAME 1'-6" ABOVE FINISHED GRADE UNLESS OTHERWISE NOTED ON THE DRAWINGS.
- HOUSE(S) WITH THE SYMBOL "C.N.S." INDICATES THAT CELLAR CANNOT BE SERVED.

SEDIMENT CONTROL MEASURES WILL BE IMPLEMENTED IN ACCORDANCE WITH SECTION 219 OF THE SPECIFICATIONS AND WITH SITE DEVELOPMENT PLAN SDP-07-096.

THIS DRAWING IS APPROVED FOR SOIL EROSION AND SEDIMENT CONTROL BY THE HOWARD COUNTY SOIL CONSERVATION DISTRICT.

REVIEWED FOR HOWARD COUNTY SOIL CONSERVATION DISTRICT AND MEETS TECHNICAL REQUIREMENTS.

*John K. Robertson*  
SOIL CONSERVATION DISTRICT

1/31/08  
DATE

*[Signature]*  
U.S. SOIL CONSERVATION DISTRICT

DEPARTMENT OF PUBLIC WORKS  
HOWARD COUNTY, MARYLAND

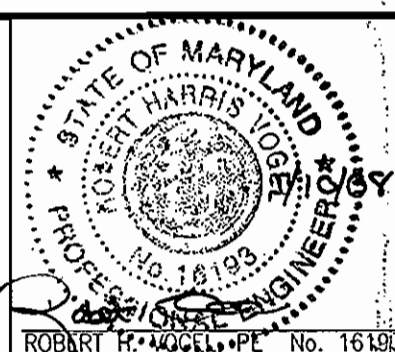
DEPARTMENT OF PLANNING & ZONING  
HOWARD COUNTY, MARYLAND

*Stacie C. Green*  
CHIEF, BUREAU OF UTILITIES

1/29/08  
DATE

*[Signature]*  
CHIEF, DEVELOPMENT ENGINEERING DIVISION

**ROBERT H. VOGEL ENGINEERING, INC.**  
ENGINEERS • SURVEYORS • PLANNERS  
8407 MAIN STREET ELLICOTT CITY, MD 21043 TEL: 410.461.7666 FAX: 410.461.8961



DES: DZ

DRN: DZ

CHK: RHV

DATE: JANUARY 2008

BY	NO.	REVISION	DATE
KCI	1	AS-BUILT DATA ADDED	10-17-08

**FINAL WATER PLAN COVER SHEET**

**PLUM TREE WILSON**  
A RESUBDIVISION OF LOT 5A AND 6, W.F. WILSON AND SON PROFIT SHARING TRUST  
PLAT NO. 3401 L.6173/F.647

**CONTRACT NO. 44-4510-D**

TAX MAP 24 BLOCK 4  
2ND ELECTION DISTRICT

PARCEL 1115; LOT 8  
HOWARD COUNTY, MARYLAND

SCALE AS SHOWN

SHEET 1 OF 2

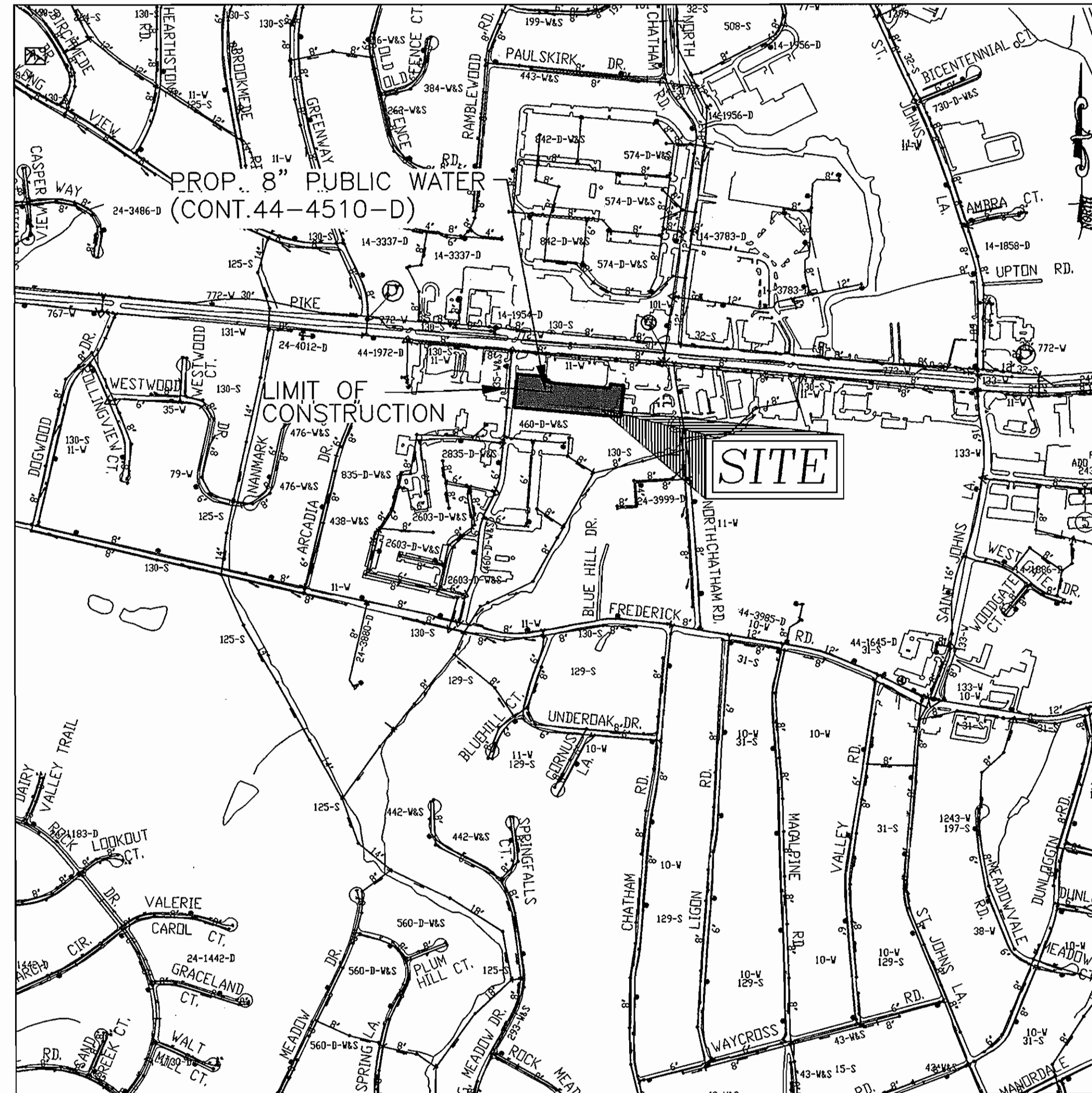
# FINAL WATER PLAN PLUM TREE WILSON

## A RESUBDIVISION OF LOT 5A AND 6 W.F. WILSON AND SON PROFIT SHARING TRUST PLAT NO.3401 L.6173 F.647 CONTRACT # 44-4510-D

**BENCHMARKS**  
HOWARD COUNTY BENCHMARK 24CA (CONCRETE MONUMENT)  
N 586506.183 E 1361634.312 ELEV. 399.036  
HOWARD COUNTY BENCHMARK 24BA (CONCRETE MONUMENT)  
N 586783.2418 E 1359211.655 ELEV. 385.660



VICINITY MAP  
SCALE: 1"=2000'  
ADC MAP COORDINATES: 12 AB



**LOCATION MAP**  
SCALE: 1"=600'

WATER CODE: F-06  
SEWER CODE: 5753700  
TEST GRADIENT: 700

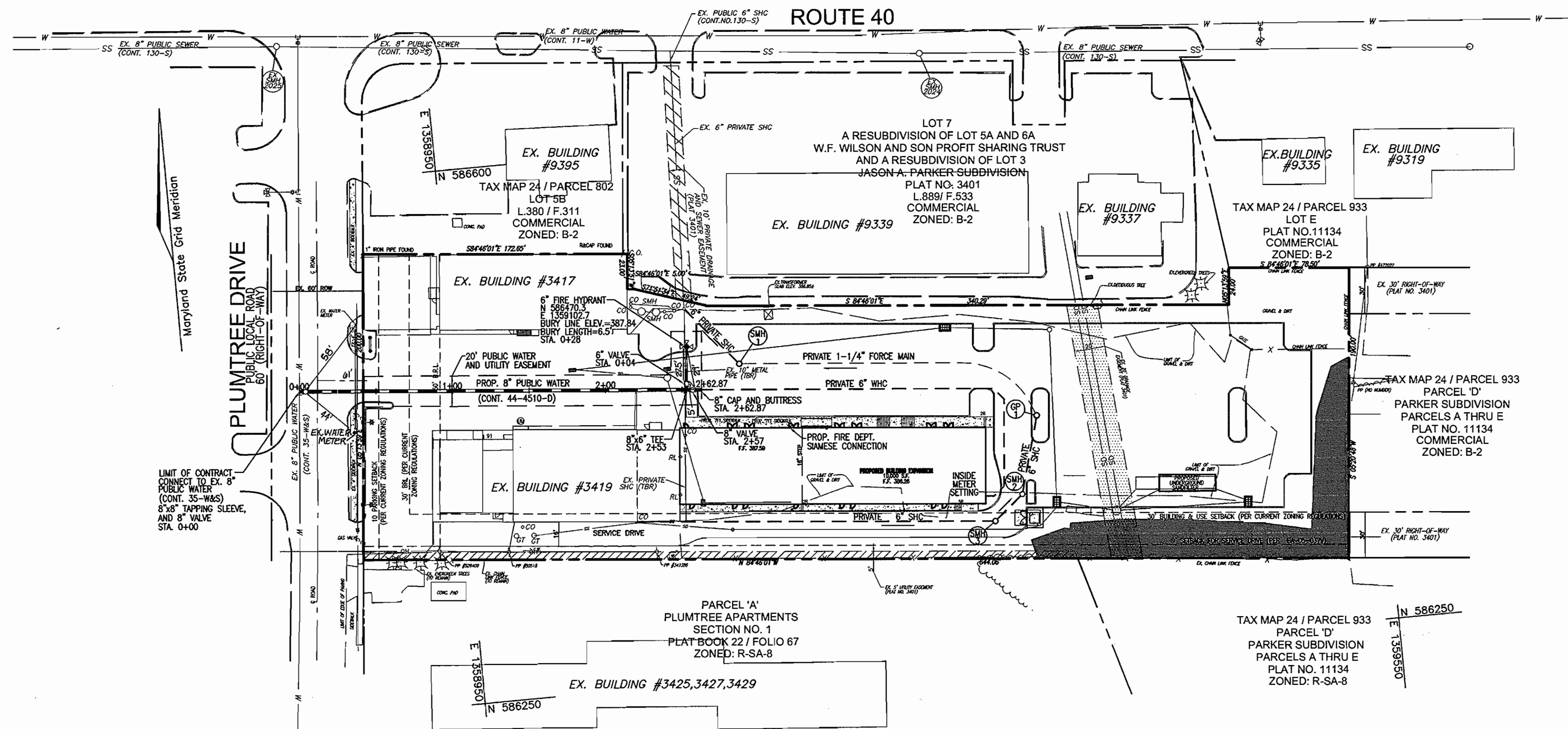
Type of Building :	SHOPPING CENTER(OFFICE/RESTAURANT)
No. of Lots/Parcels :	2
No. of single Water House Connections :	1
No. of twin Water House Connections :	0
No. of Sewer House Connections :	1
Sewer Shed :	LITTLE PATUXENT RIVER
Treatment Plant :	LITTLE PATUXENT RIVER

**QUANTITIES**

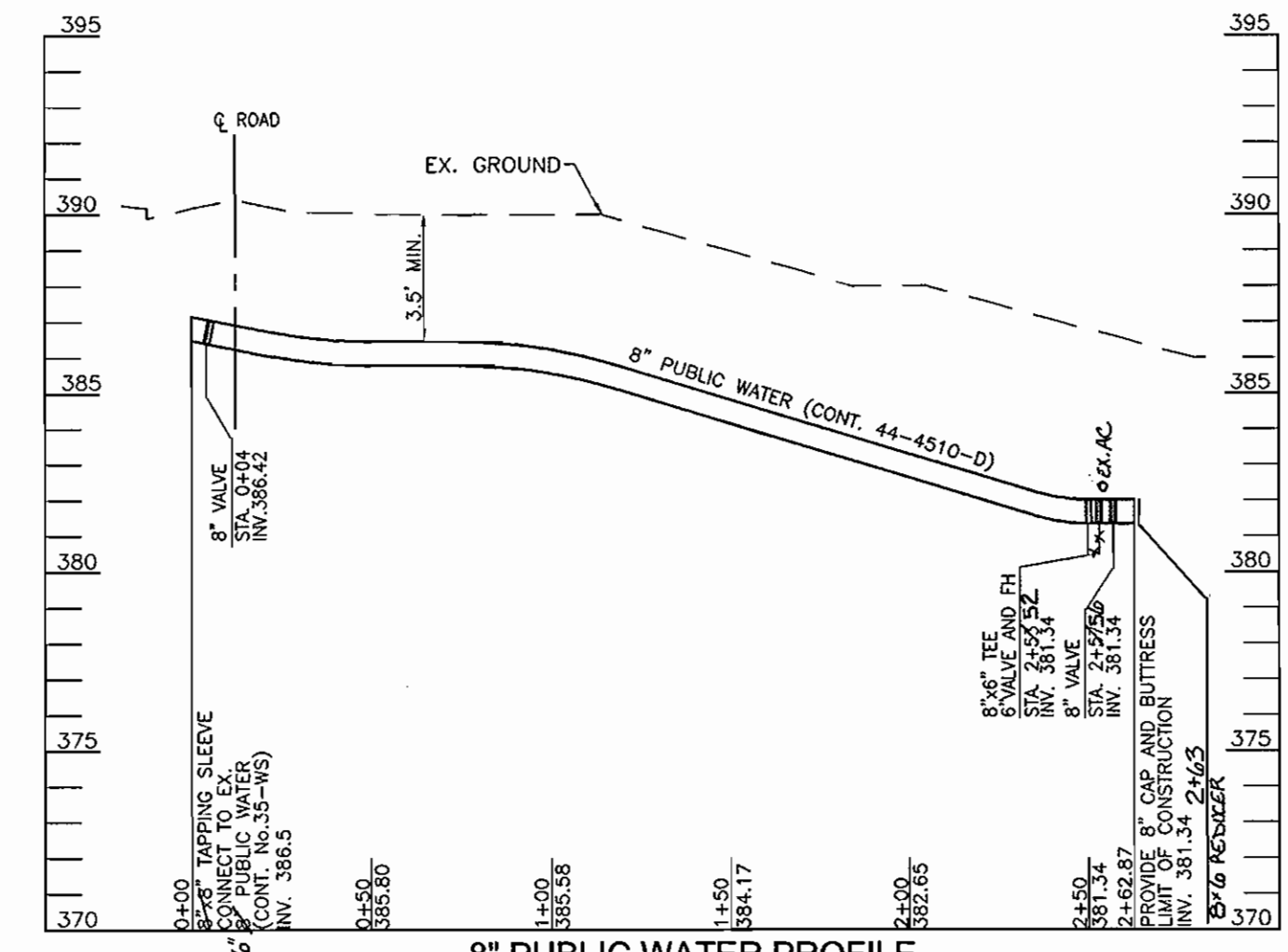
NAME OF UTILITY CONTRACTOR : W.F. WILSON  
SURVEY AND DRAFTING DIVISION AS-BUILT DATE :

ITEMS	QUANTITIES ESTIMATED	AS-BUILT	
		QUANTITIES	MANUFACTURER/SUPPLIER
WATER			
8" DIP WATER	263 LF	263 LF	LI SA GRIPPIN PIPE / BELAKI ROAD SUPPLY
6" DIP WATER	28 LF	28 LF	" " " " " "
8" X 6" TEE	1 EA	1	MS SIGMA CORP. / " "
8" VALVE	2 EA	2	RSOR GATE MOELLER CO. / " "
6" VALVE	1 EA	1	" " " " " "
6" FIRE HYDRANT	1 EA	1	6" DRANGE " " " " " "
8" CAP AND BUTTRESS	1 EA	0	" " " " " "
8" X 6" TAPPING SLEEVE	1 EA	0	" " " " " "
6" X 6" " "	1	1	SS ROMAC IAND / " "
8" X 6" REDUCER	1	1	MS SIGMA CORP. / " "

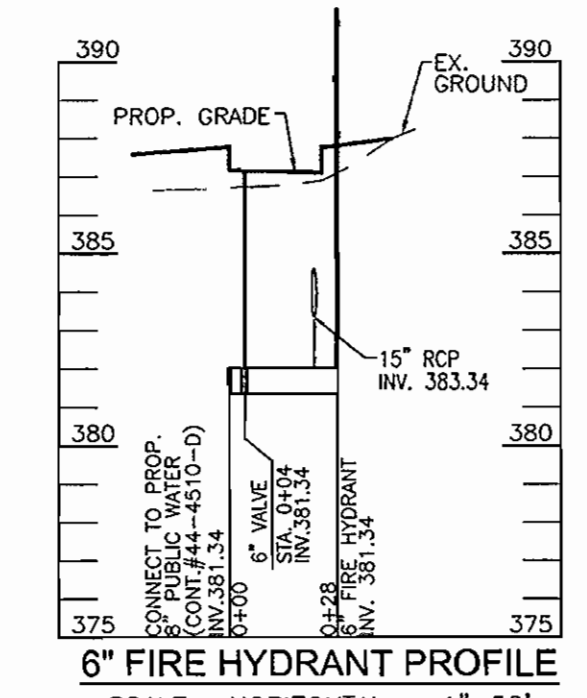




PLAN VIEW  
SCALE: 1"=50'



8" PUBLIC WATER PROFILE  
SCALE: HORIZONTAL - 1"=50'  
VERTICAL - 1"=5'



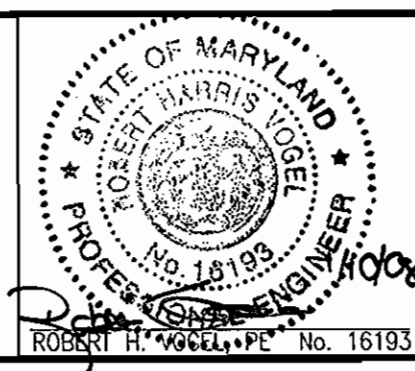
6" FIRE HYDRANT PROFILE  
SCALE: HORIZONTAL - 1"=50'  
VERTICAL - 1"=5'

OWNER/DEVELOPER:  
PLUMTREE LLC  
C/O WILLIAM KING  
3410 PLUMTREE DRIVE  
ELLCOTT CITY, MD 21042

DEPARTMENT OF PUBLIC WORKS  
HOWARD COUNTY, MARYLAND

DEPARTMENT OF PLANNING & ZONING  
HOWARD COUNTY, MARYLAND

**ROBERT H. VOGEL**  
**ENGINEERING, INC.**  
ENGINEERS • SURVEYORS • PLANNERS  
8407 MAIN STREET TEL: 410.461.7666  
ELLCOTT CITY, MD 21043 FAX: 410.461.8961



DES:	DZ				
DRN:	DZ				
CHK:	RHV				
DATE:	JANUARY 2008	BY:	KCI	REVISION:	AS-BUILT DATA ADDED
					10-17-08

FINAL WATER PLAN  
PLAN VIEW

PLUM TREE WILSON  
A RESUBDIVISION OF LOT 5A AND 6, W.F.  
WILSON AND SON PROFIT SHARING TRUST  
PLAT NO. 3401 L6173/F.647

CONTRACT NO. 44-4510-D

TAX MAP 24 BLOCK 4  
2ND ELECTION DISTRICT

PARCEL 1115; LOT 8  
HOWARD COUNTY, MARYLAND

SCALE  
AS  
SHOWN

SHEET  
2 OF 2

K:\Projects\03-04\ENGR.dwg\NS\FINAL\V.incl\_w.dwg 1/9/2008 1:02:23 PM